



**SCIENTIFIC COMMITTEE
SEVENTEENTH REGULAR SESSION**

Online Meeting
11 –19 August 2021

**Catch and effort data summaries
to support discussions
on the new SWORDFISH CMM**

WCPFC-SC17-2021/MI-IP12

Paper prepared by

Oceanic Fisheries Programme (OFP)
Pacific Community (SPC)

Contents

| | |
|--|----------|
| 1. Tables..... | 1 |
| Table 1. Longline SWORDFISH catch in the area north/south of 20°S, WCPFC Area south of the equator | 1 |
| Table 2. Proportion of Longline SWORDFISH catch by 10° latitude band in the WCPFC Area south of the equator. | 2 |
| Table 3. Longline SWORDFISH target/bycatch for EEZs and high seas areas in the WCPFC Area south of the equator | 3 |
| Table 4. Longline SWORDFISH target/bycatch for EEZs and high seas areas, by broad area | 4 |
| Table 5. Longline SWORDFISH catch by flag in the WCPFC Area south of the equator | 5 |
| Table 6. Longline SWORDFISH catch by EEZ/high seas areas in the WCPFC Area south of the equator..... | 6 |
| 2. Figures | 7 |
| Figure 1. Longline SWORDFISH catch in the area north/south of 20°S, WCPFC Area south of the equator | 7 |
| Figure 2. Longline SWORDFISH for EEZs and high seas areas in the WCPFC Area south of the equator | 7 |
| Figure 3. Longline SWORDFISH by broad area in the WCPFC Area south of the equator | 7 |
| Figure 4. Annual trends in SWORDFISH nominal CPUE for key LONGLINE fleets in the south Pacific Ocean. | 8 |
| Figure 5. Distribution of South Pacific SWORDFISH longline CPUE and effort for selected periods | 9 |
| Figure 6 Distribution of South Pacific longline swordfish catch (numbers), by 5-year periods. | 10 |

1. Tables

Table 1. Longline SWORDFISH catch in the area north/south of 20°S, WCPFC Area south of the equator.

Source of data: AGGREGATE CATCH DATABASE, 2000–2020; Excludes the Indonesian estimated SWORDFISH catches.

| Year | WCPFC Area south of equator (MT) | North of 20°S in the WCPFC Area south of equator | | South of 20°S in the WCPFC Area south of equator | |
|---------|----------------------------------|--|-----|--|-----|
| | | MT | % | MT | % |
| 2000 | 5,269 | 1,926 | 37% | 3,343 | 63% |
| 2001 | 5,956 | 2,182 | 37% | 3,775 | 63% |
| 2002 | 7,110 | 3,073 | 43% | 4,037 | 57% |
| 2003 | 6,268 | 2,799 | 45% | 3,469 | 55% |
| 2004 | 7,599 | 3,656 | 48% | 3,943 | 52% |
| 2005 | 6,677 | 2,357 | 35% | 4,321 | 65% |
| 2006 | 8,848 | 3,367 | 38% | 5,480 | 62% |
| 2007 | 9,458 | 2,941 | 31% | 6,517 | 69% |
| 2008 | 8,841 | 4,138 | 47% | 4,703 | 53% |
| 2009 | 7,493 | 4,280 | 57% | 3,213 | 43% |
| 2010 | 6,297 | 3,461 | 55% | 2,837 | 45% |
| 2011 | 8,462 | 4,971 | 59% | 3,491 | 41% |
| 2012 | 8,801 | 4,907 | 56% | 3,894 | 44% |
| 2013 | 8,246 | 4,603 | 56% | 3,643 | 44% |
| 2014 | 8,536 | 4,795 | 56% | 3,741 | 44% |
| 2015 | 8,340 | 4,292 | 51% | 4,049 | 49% |
| 2016 | 6,742 | 3,481 | 52% | 3,261 | 48% |
| 2017 | 6,842 | 3,873 | 57% | 2,969 | 43% |
| 2018 | 7,091 | 3,951 | 56% | 3,140 | 44% |
| 2019 | 6,895 | 3,287 | 48% | 3,608 | 52% |
| 2020 | 5,631 | 2,731 | 48% | 2,900 | 52% |
| Average | 7,400 | 3,575 | 48% | 3,825 | 52% |

Table 2. Proportion of Longline SWORDFISH catch by 10° latitude band in the WCPFC Area south of the equator.

Source of data: AGGREGATE CATCH DATABAS, 2000–2020E; Excludes the Indonesian estimated SWORDFISH catches.

| Year | SWORDFISH CATCH - WCPFC Area south of equator | | | | | | | | | |
|---------|---|-----------|-----------|-----------|-----------|---------|-----------|-----------|-----------|-----------|
| | METRIC TONNES | | | | | % | | | | |
| | 0°-10°S | 10°S-20°S | 20°S-30°S | 30°S-40°S | 40°S-50°S | 0°-10°S | 10°S-20°S | 20°S-30°S | 30°S-40°S | 40°S-50°S |
| 2000 | 1,506 | 420 | 1,686 | 1,460 | 197 | 29% | 8% | 32% | 28% | 4% |
| 2001 | 1,563 | 618 | 1,970 | 1,575 | 229 | 26% | 10% | 33% | 26% | 4% |
| 2002 | 2,053 | 1,020 | 2,119 | 1,715 | 203 | 29% | 14% | 30% | 24% | 3% |
| 2003 | 1,698 | 1,101 | 1,867 | 1,390 | 213 | 27% | 18% | 30% | 22% | 3% |
| 2004 | 2,743 | 913 | 1,924 | 1,835 | 184 | 36% | 12% | 25% | 24% | 2% |
| 2005 | 1,604 | 753 | 2,853 | 1,359 | 109 | 24% | 11% | 43% | 20% | 2% |
| 2006 | 2,628 | 739 | 3,318 | 2,097 | 66 | 30% | 8% | 37% | 24% | 1% |
| 2007 | 2,410 | 532 | 3,315 | 3,144 | 57 | 25% | 6% | 35% | 33% | 1% |
| 2008 | 3,225 | 912 | 2,112 | 2,553 | 38 | 36% | 10% | 24% | 29% | 0% |
| 2009 | 2,754 | 1,526 | 1,459 | 1,642 | 112 | 37% | 20% | 19% | 22% | 1% |
| 2010 | 2,235 | 1,225 | 1,256 | 1,519 | 62 | 35% | 19% | 20% | 24% | 1% |
| 2011 | 3,547 | 1,424 | 1,442 | 1,924 | 125 | 42% | 17% | 17% | 23% | 1% |
| 2012 | 3,524 | 1,383 | 1,527 | 2,205 | 161 | 40% | 16% | 17% | 25% | 2% |
| 2013 | 3,066 | 1,537 | 1,659 | 1,770 | 215 | 37% | 19% | 20% | 21% | 3% |
| 2014 | 3,536 | 1,259 | 2,054 | 1,477 | 210 | 41% | 15% | 24% | 17% | 2% |
| 2015 | 3,232 | 1,059 | 2,243 | 1,487 | 319 | 39% | 13% | 27% | 18% | 4% |
| 2016 | 2,009 | 1,472 | 1,582 | 1,446 | 234 | 30% | 22% | 23% | 21% | 3% |
| 2017 | 2,242 | 1,631 | 1,619 | 1,200 | 150 | 33% | 24% | 24% | 18% | 2% |
| 2018 | 2,888 | 1,063 | 1,448 | 1,524 | 169 | 41% | 15% | 20% | 21% | 2% |
| 2019 | 1,605 | 1,682 | 1,289 | 1,926 | 393 | 23% | 24% | 19% | 28% | 6% |
| 2020 | 1,375 | 1,355 | 1,341 | 1,459 | 100 | 24% | 24% | 24% | 26% | 2% |
| Average | 2,450 | 1,125 | 1,909 | 1,748 | 169 | 33% | 15% | 26% | 24% | 2% |

Table 3. Longline SWORDFISH target/bycatch for EEZs and high seas areas in the WCPFC Area south of the equator

| Year | Swordfish catch (MT) in WCPFC South of the equator | | | | | | | | |
|------|--|-----|--------|-----|-----------|-----|--------|-----|-------|
| | EEZ | | | | High Seas | | | | Total |
| | Bycatch | % | Target | % | Bycatch | % | Target | % | |
| 2000 | 419 | 8% | 2,646 | 50% | 2,204 | 42% | 0 | 0% | 5,269 |
| 2001 | 305 | 5% | 3,214 | 54% | 2,437 | 41% | 0 | 0% | 5,956 |
| 2002 | 361 | 5% | 3,061 | 43% | 3,685 | 52% | 0 | 0% | 7,107 |
| 2003 | 515 | 8% | 2,066 | 33% | 3,685 | 59% | 0 | 0% | 6,265 |
| 2004 | 539 | 7% | 1,881 | 25% | 4,526 | 59% | 730 | 10% | 7,675 |
| 2005 | 467 | 7% | 2,107 | 32% | 2,739 | 41% | 1,358 | 20% | 6,670 |
| 2006 | 465 | 5% | 1,609 | 18% | 3,756 | 42% | 3,107 | 35% | 8,937 |
| 2007 | 574 | 6% | 1,714 | 18% | 2,879 | 31% | 4,217 | 45% | 9,384 |
| 2008 | 437 | 5% | 1,655 | 17% | 4,013 | 42% | 3,410 | 36% | 9,515 |
| 2009 | 505 | 6% | 1,490 | 19% | 4,122 | 53% | 1,721 | 22% | 7,837 |
| 2010 | 564 | 9% | 1,407 | 22% | 3,511 | 54% | 994 | 15% | 6,475 |
| 2011 | 766 | 9% | 1,704 | 20% | 4,554 | 54% | 1,431 | 17% | 8,455 |
| 2012 | 1,068 | 12% | 1,636 | 18% | 4,330 | 47% | 2,131 | 23% | 9,165 |
| 2013 | 848 | 10% | 1,503 | 18% | 4,274 | 51% | 1,780 | 21% | 8,405 |
| 2014 | 712 | 8% | 1,640 | 19% | 4,724 | 54% | 1,680 | 19% | 8,756 |
| 2015 | 600 | 7% | 1,828 | 21% | 4,819 | 56% | 1,337 | 16% | 8,584 |
| 2016 | 694 | 9% | 1,520 | 20% | 3,673 | 49% | 1,651 | 22% | 7,538 |
| 2017 | 609 | 9% | 1,415 | 21% | 3,880 | 57% | 932 | 14% | 6,836 |
| 2018 | 749 | 11% | 1,298 | 18% | 3,945 | 55% | 1,124 | 16% | 7,116 |
| 2019 | 633 | 9% | 1,910 | 28% | 3,167 | 46% | 1,194 | 17% | 6,904 |
| 2020 | 468 | 8% | 791 | 14% | 2,990 | 53% | 1,415 | 25% | 5,663 |

Notes:

1. Swordfish target fisheries comprise the EU-Spanish (high seas), Australia (EEZ) and New Zealand (EEZ)
2. Sources of data are annual SWO catch estimates by EEZ adjusted to aggregated SWO catch data provided by CCMs.
3. Includes estimated weight of SWO discards

Table 4. Longline SWORDFISH target/bycatch for EEZs and high seas areas, by broad area

| Year | Swordfish catch (MT) in WCPFC South of the equator | | | | | | | | | | | | | | | |
|------|--|--------|-----------|--------|---------|--------|-----------|--------|---------|--------|-----------|--------|---------|--------|-----------|--------|
| | Area #1 | | | | Area #2 | | | | Area #3 | | | | Area #4 | | | |
| | EEZ | | High Seas | | EEZ | | High Seas | | EEZ | | High Seas | | EEZ | | High Seas | |
| | Bycatch | Target | Bycatch | Target | Bycatch | Target | Bycatch | Target | Bycatch | Target | Bycatch | Target | Bycatch | Target | Bycatch | Target |
| 2000 | 171 | 75 | 191 | 0 | 166 | 0 | 1,323 | 0 | 60 | 2,569 | 645 | 0 | 22 | 2 | 44 | 0 |
| 2001 | 112 | 116 | 289 | 0 | 119 | 0 | 1,546 | 0 | 59 | 3,098 | 549 | 0 | 16 | 0 | 53 | 0 |
| 2002 | 134 | 78 | 529 | 0 | 145 | 0 | 2,185 | 0 | 55 | 2,981 | 793 | 0 | 27 | 3 | 178 | 0 |
| 2003 | 116 | 57 | 487 | 0 | 158 | 0 | 1,978 | 0 | 64 | 2,008 | 623 | 0 | 177 | 0 | 597 | 0 |
| 2004 | 118 | 24 | 318 | 0 | 147 | 0 | 3,031 | 20 | 73 | 1,856 | 718 | 151 | 200 | 0 | 459 | 559 |
| 2005 | 110 | 48 | 364 | 0 | 180 | 0 | 1,654 | 1 | 70 | 2,059 | 594 | 75 | 107 | 0 | 127 | 1,282 |
| 2006 | 108 | 32 | 249 | 0 | 178 | 0 | 2,800 | 0 | 58 | 1,577 | 317 | 32 | 121 | 0 | 390 | 3,075 |
| 2007 | 174 | 22 | 191 | 0 | 284 | 0 | 2,265 | 5 | 64 | 1,692 | 224 | 107 | 52 | 0 | 199 | 4,105 |
| 2008 | 119 | 39 | 686 | 0 | 210 | 0 | 3,081 | 2 | 65 | 1,617 | 187 | 34 | 42 | 0 | 59 | 3,373 |
| 2009 | 190 | 68 | 1,317 | 0 | 217 | 0 | 2,424 | 79 | 65 | 1,422 | 288 | 138 | 32 | 0 | 92 | 1,504 |
| 2010 | 207 | 37 | 726 | 0 | 207 | 0 | 2,280 | 2 | 93 | 1,370 | 427 | 344 | 56 | 0 | 77 | 648 |
| 2011 | 280 | 48 | 1,011 | 0 | 362 | 0 | 3,090 | 0 | 91 | 1,656 | 396 | 490 | 33 | 0 | 57 | 941 |
| 2012 | 326 | 61 | 918 | 0 | 587 | 0 | 2,946 | 0 | 105 | 1,575 | 391 | 1,264 | 49 | 0 | 75 | 867 |
| 2013 | 206 | 54 | 606 | 0 | 527 | 0 | 3,203 | 0 | 79 | 1,448 | 392 | 963 | 37 | 0 | 72 | 817 |
| 2014 | 229 | 36 | 561 | 0 | 384 | 0 | 3,584 | 0 | 67 | 1,605 | 501 | 759 | 31 | 0 | 77 | 921 |
| 2015 | 242 | 28 | 611 | 0 | 257 | 0 | 3,152 | 0 | 65 | 1,800 | 982 | 1,181 | 36 | 0 | 73 | 156 |
| 2016 | 147 | 29 | 423 | 0 | 379 | 0 | 2,503 | 0 | 114 | 1,491 | 651 | 1,144 | 54 | 0 | 96 | 507 |
| 2017 | 128 | 41 | 477 | 0 | 279 | 0 | 2,942 | 0 | 95 | 1,374 | 277 | 716 | 108 | 0 | 184 | 216 |
| 2018 | 210 | 48 | 347 | 0 | 303 | 0 | 3,043 | 0 | 98 | 1,250 | 293 | 608 | 138 | 0 | 262 | 516 |
| 2019 | 172 | 62 | 299 | 0 | 310 | 0 | 2,444 | 0 | 76 | 1,848 | 180 | 666 | 75 | 0 | 244 | 528 |
| 2020 | 70 | 20 | 216 | 0 | 263 | 0 | 2,161 | 0 | 63 | 771 | 274 | 937 | 72 | 0 | 339 | 478 |

Refer to the broad areas in the map below for the WCPFC Area south of the equator. The four regions are split by dividing lines at latitude 20S and longitude 175W.

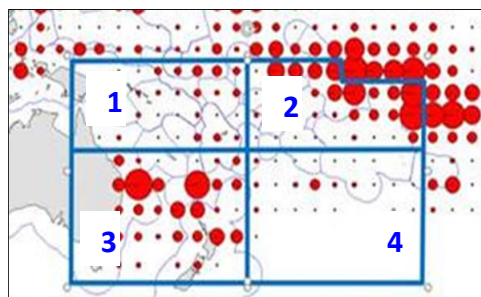


Table 5. Longline SWORDFISH catch by flag in the WCPFC Area south of the equator

| flag | 2000 | 2001 | 2002 | 2003 | 2004 | 2005 | 2006 | 2007 | 2008 | 2009 | 2010 | 2011 | 2012 | 2013 | 2014 | 2015 | 2016 | 2017 | 2018 | 2019 | 2020 | |
|-------------------|-------|-------|-------|-------|-------|-------|-------|-------|-------|-------|-------|-------|-------|-------|-------|-------|-------|-------|-------|-------|-------|---|
| AMERICAN SAMOA | 1 | 0 | 0 | 0 | 0 | 8 | 38 | 13 | 7 | 8 | 2 | 12 | 52 | 28 | 25 | 32 | 50 | 56 | 47 | 4 | 2 | |
| AUSTRALIA | 2,696 | 2,267 | 2,275 | 2,039 | 1,784 | 1,730 | 1,136 | 1,353 | 1,483 | 1,315 | 942 | 916 | 1,157 | 1,062 | 1,183 | 1,150 | 992 | 1,066 | 854 | 729 | 576 | |
| BELIZE | 3 | 128 | 10 | 417 | 117 | 44 | 23 | 7 | 4 | 2 | 7 | 19 | 10 | 43 | 0 | 0 | 0 | 0 | 0 | 0 | 0 | |
| CHINA | 0 | 0 | 29 | 862 | 582 | 434 | 1,210 | 1,890 | 2,192 | 1,661 | 1,025 | 1,808 | 2,280 | 2,038 | 2,275 | 2,037 | 1,289 | 1,574 | 1,481 | 968 | 437 | |
| COOK ISLANDS | 0 | 0 | 13 | 164 | 170 | 97 | 98 | 36 | 17 | 11 | 78 | 41 | 140 | 16 | 14 | 18 | 25 | 56 | 44 | 30 | 26 | |
| EU-PORTUGAL | | | | | | | | | | | | 197 | 222 | 223 | 107 | 177 | 168 | 0 | 0 | 0 | 0 | |
| EU-SPAIN | | | | | 683 | 1,244 | 3,104 | 4,217 | 3,410 | 1,721 | 994 | 1,431 | 2,131 | 1,780 | 1,680 | 1,337 | 1,651 | 932 | 1,123 | 1,194 | 1,415 | |
| FIJI | 118 | 115 | 170 | 160 | 261 | 177 | 210 | 86 | 85 | 107 | 90 | 128 | 128 | 128 | 167 | 122 | 141 | 117 | 105 | 118 | 106 | |
| FRENCH POLYNESIA | 47 | 79 | 70 | 117 | 86 | 79 | 83 | 68 | 80 | 71 | 80 | 89 | 116 | 128 | 142 | 109 | 101 | 150 | 218 | 170 | 179 | |
| FSM | | | | | | | | | | | | | | 4 | 7 | 4 | 15 | 38 | 6 | 5 | 51 | 8 |
| JAPAN | 914 | 825 | 842 | 581 | 670 | 444 | 371 | 434 | 442 | 503 | 560 | 641 | 675 | 538 | 393 | 357 | 414 | 287 | 357 | 152 | 152 | |
| NEW CALEDONIA | 40 | 41 | 46 | 48 | 17 | 12 | 10 | 19 | 15 | 7 | 8 | 10 | 10 | 9 | 14 | 9 | 8 | 22 | 8 | 24 | 9 | |
| NEW ZEALAND | 975 | 1,027 | 920 | 635 | 538 | 348 | 581 | 392 | 347 | 418 | 535 | 738 | 686 | 777 | 583 | 713 | 755 | 504 | 463 | 264 | 219 | |
| NIUE | | | | | | 1 | 2 | 2 | 0 | 0 | 1 | 0 | 0 | 0 | 0 | 0 | 0 | 0 | 0 | 0 | 0 | |
| PAPUA NEW GUINEA | 12 | 22 | 22 | 30 | 73 | 98 | 80 | 82 | 81 | 79 | 93 | 125 | 177 | 114 | 114 | 2 | 6 | 6 | 21 | 15 | 0 | |
| REPUBLIC OF KOREA | 1,120 | 1,100 | 1,116 | 636 | 758 | 470 | 388 | 139 | 455 | 505 | 782 | 992 | 985 | 933 | 550 | 433 | 362 | 356 | 634 | 356 | 322 | |
| SAMOA | 123 | 27 | 14 | 12 | 4 | 1 | 3 | 5 | 6 | 5 | 7 | 5 | 5 | 3 | 4 | 5 | 4 | 16 | 11 | 21 | 27 | |
| SOLOMON ISLANDS | 5 | 2 | 3 | 3 | 3 | 0 | 0 | 0 | 0 | 0 | 74 | 10 | 0 | 0 | 202 | 167 | 33 | 0 | 55 | 82 | 95 | |
| CHINESE TAIPEI | 172 | 473 | 963 | 883 | 1,667 | 791 | 828 | 1,147 | 1,067 | 1,152 | 1,482 | 1,426 | 1,471 | 1,625 | 1,778 | 1,517 | 1,618 | 1,815 | 1,425 | 1,408 | 1,485 | |
| TONGA | 29 | 44 | 42 | 25 | 10 | 18 | 21 | 31 | 28 | 22 | 26 | 22 | 19 | 26 | 37 | 42 | 39 | 32 | 44 | 33 | 16 | |
| TUVALU | | | | | | | | | | | | 10 | 38 | 6 | 3 | 6 | 3 | 12 | 2 | 1 | 1 | |
| VANUATU | 1 | 5 | 149 | 135 | 704 | 423 | 148 | 140 | 131 | 117 | 200 | 122 | 178 | 316 | 333 | 450 | 213 | 411 | 410 | 189 | 295 | |
| WALLIS AND FUTUNA | | | | | | | | | | | | 0 | 0 | 0 | 0 | 0 | 0 | 0 | 0 | 0 | 0 | |

Notes

1. Source: Annual catch estimates by EEZ/high seas areas (may differ from aggregate catch/effort data)

Table 6. Longline SWORDFISH catch by EEZ/high seas areas in the WCPFC Area south of the equator

| Area | 2000 | 2001 | 2002 | 2003 | 2004 | 2005 | 2006 | 2007 | 2008 | 2009 | 2010 | 2011 | 2012 | 2013 | 2014 | 2015 | 2016 | 2017 | 2018 | 2019 | 2020 |
|-------------------|-------|-------|-------|-------|-------|-------|-------|-------|-------|-------|-------|-------|-------|-------|-------|-------|-------|-------|-------|-------|-------|
| High Seas | 2,303 | 2,646 | 3,204 | 3,703 | 5,413 | 3,984 | 6,132 | 7,822 | 7,546 | 5,481 | 4,860 | 6,347 | 7,411 | 6,991 | 6,967 | 6,233 | 5,461 | 5,177 | 5,268 | 4,126 | 4,084 |
| AMERICAN SAMOA | 0 | 0 | 0 | 0 | 0 | 2 | 19 | 2 | 1 | 1 | 0 | 3 | 17 | 8 | 5 | 7 | 19 | 30 | 30 | 2 | 1 |
| AUSTRALIA | 2,499 | 2,130 | 2,084 | 1,773 | 1,481 | 1,498 | 1,030 | 1,298 | 1,461 | 1,293 | 921 | 905 | 1,141 | 1,028 | 1,161 | 1,147 | 963 | 1,050 | 842 | 725 | 565 |
| COOK ISLANDS | | 0 | 13 | 161 | 170 | 94 | 85 | 35 | 16 | 17 | 80 | 69 | 387 | 118 | 91 | 82 | 86 | 71 | 47 | 91 | 32 |
| FIJI | 107 | 126 | 168 | 123 | 174 | 112 | 133 | 60 | 61 | 74 | 72 | 75 | 72 | 73 | 103 | 89 | 106 | 86 | 87 | 85 | 70 |
| FRENCH POLYNESIA | 117 | 79 | 70 | 116 | 85 | 76 | 79 | 68 | 80 | 71 | 80 | 89 | 116 | 128 | 142 | 109 | 101 | 150 | 218 | 170 | 179 |
| NEW CALEDONIA | 40 | 41 | 46 | 48 | 17 | 12 | 10 | 19 | 15 | 7 | 8 | 10 | 10 | 9 | 14 | 9 | 8 | 22 | 8 | 24 | 9 |
| NEW ZEALAND | 963 | 1,014 | 913 | 634 | 532 | 333 | 571 | 389 | 346 | 418 | 532 | 735 | 686 | 775 | 583 | 713 | 754 | 503 | 463 | 264 | 219 |
| NIUE | | | 0 | | | 1 | 2 | 2 | 0 | 0 | 2 | | | 3 | 2 | 1 | 0 | 0 | 1 | 3 | 2 |
| PAPUA NEW GUINEA | 12 | 22 | 22 | 30 | 73 | 98 | 81 | 88 | 84 | 82 | 93 | 128 | 181 | 117 | 141 | 9 | 55 | 58 | 80 | 62 | 11 |
| SAMOA | 123 | 27 | 14 | 12 | 4 | 1 | 3 | 5 | 6 | 5 | 7 | 5 | 5 | 3 | 4 | 5 | 3 | 7 | 6 | 10 | 11 |
| SOLOMON ISLANDS | 7 | 5 | 30 | 35 | 56 | 60 | 72 | 108 | 138 | 158 | 169 | 197 | 227 | 212 | 191 | 117 | 98 | 66 | 91 | 94 | 83 |
| TOKELAU | | | | | | | | | 0 | | | 7 | 23 | 0 | 1 | 23 | 20 | 18 | 9 | 17 | 24 |
| TONGA | 29 | 37 | 39 | 21 | 10 | 18 | 20 | 30 | 28 | 22 | 26 | 28 | 78 | 124 | 56 | 60 | 62 | 36 | 45 | 43 | 26 |
| TUVALU | 18 | 18 | 24 | 5 | 13 | 25 | 3 | 60 | 7 | 20 | 91 | 25 | 46 | 67 | 41 | 24 | 73 | 50 | 68 | 66 | 6 |
| VANUATU | 37 | 9 | 55 | 87 | 98 | 106 | 94 | 76 | 61 | 54 | 45 | 118 | 83 | 144 | 106 | 69 | 100 | 92 | 42 | 28 | 48 |
| WALLIS AND FUTUNA | | | | | | 0 | | | | | | 0 | | | | | | | | | |

1. Source: Annual catch estimates by EEZ/high seas areas (may differ from aggregate catch/effort data)

2. Figures

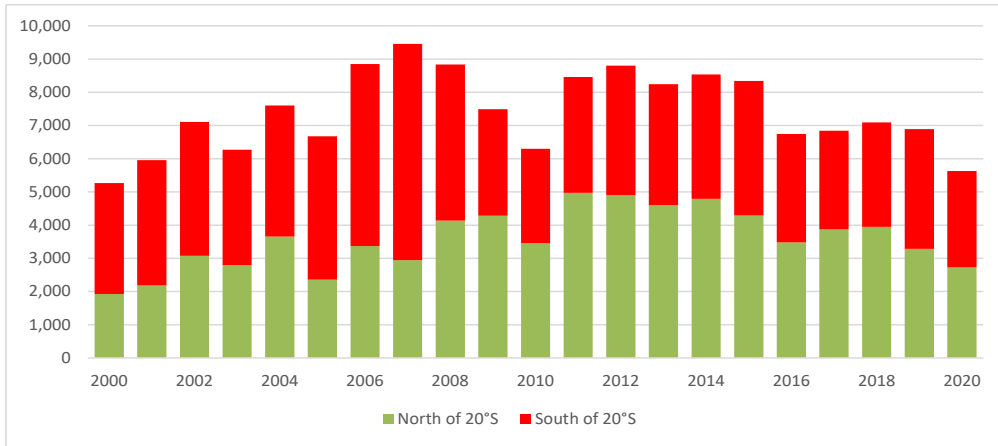


Figure 1. Longline SWORDFISH catch in the area north/south of 20°S, WCPFC Area south of the equator.
(see Table 1 notes)

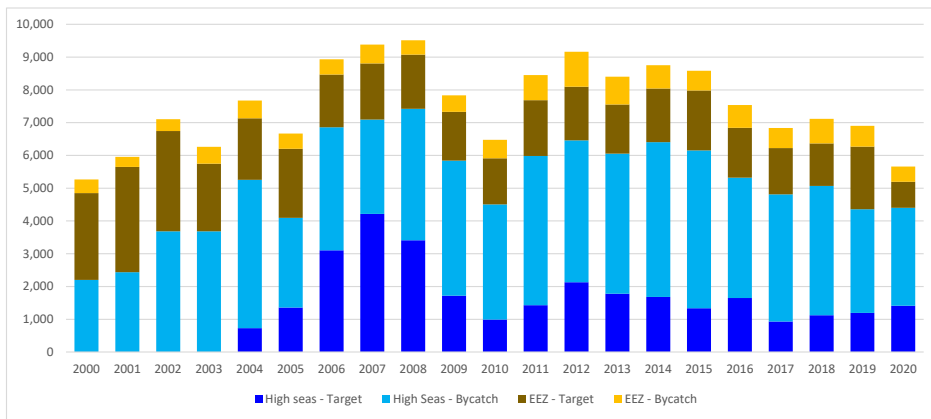


Figure 2. Longline SWORDFISH for EEZs and high seas areas in the WCPFC Area south of the equator
(see Table 3 notes)

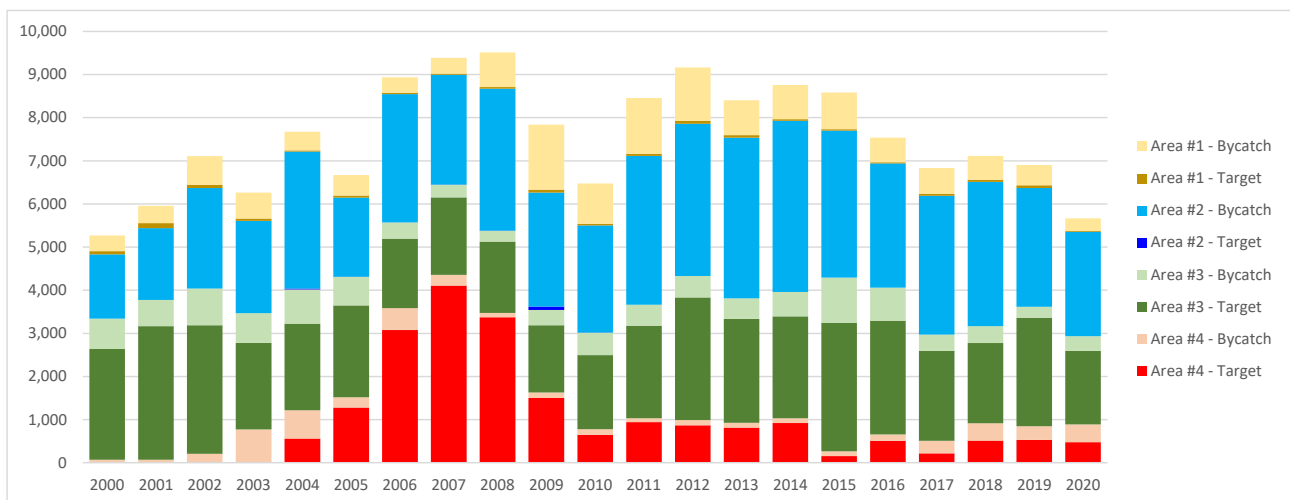


Figure 3. Longline SWORDFISH by broad area in the WCPFC Area south of the equator
(see Table 4 notes and map)

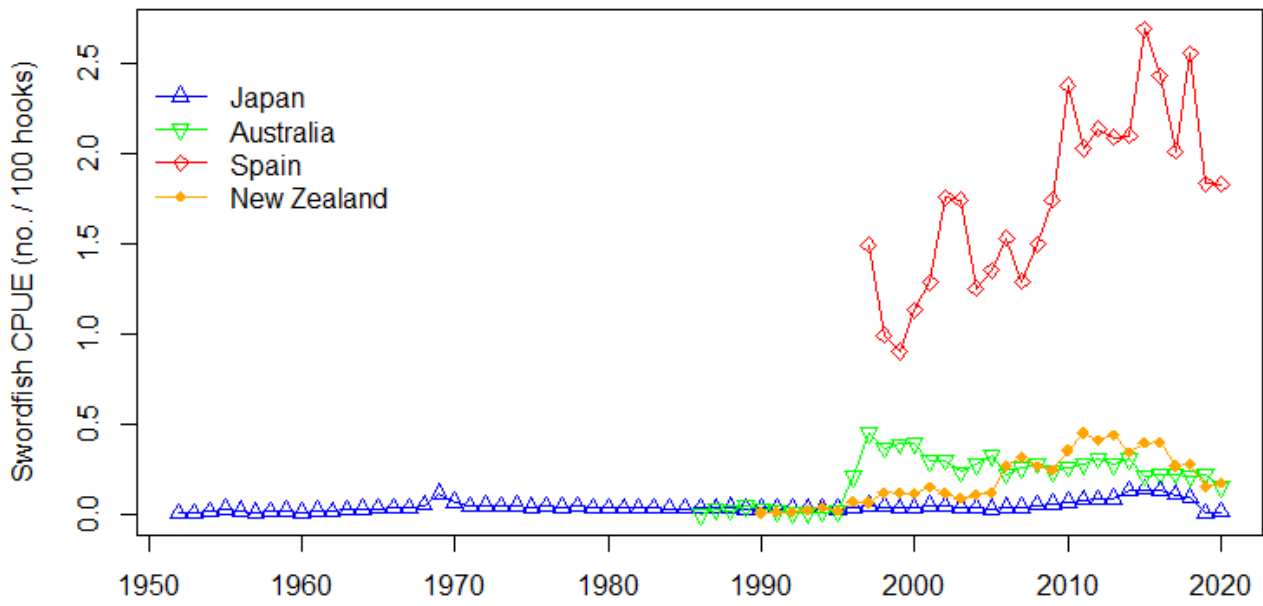


Figure 4. Annual trends in SWORDFISH nominal CPUE for key LONGLINE fleets in the south Pacific Ocean.

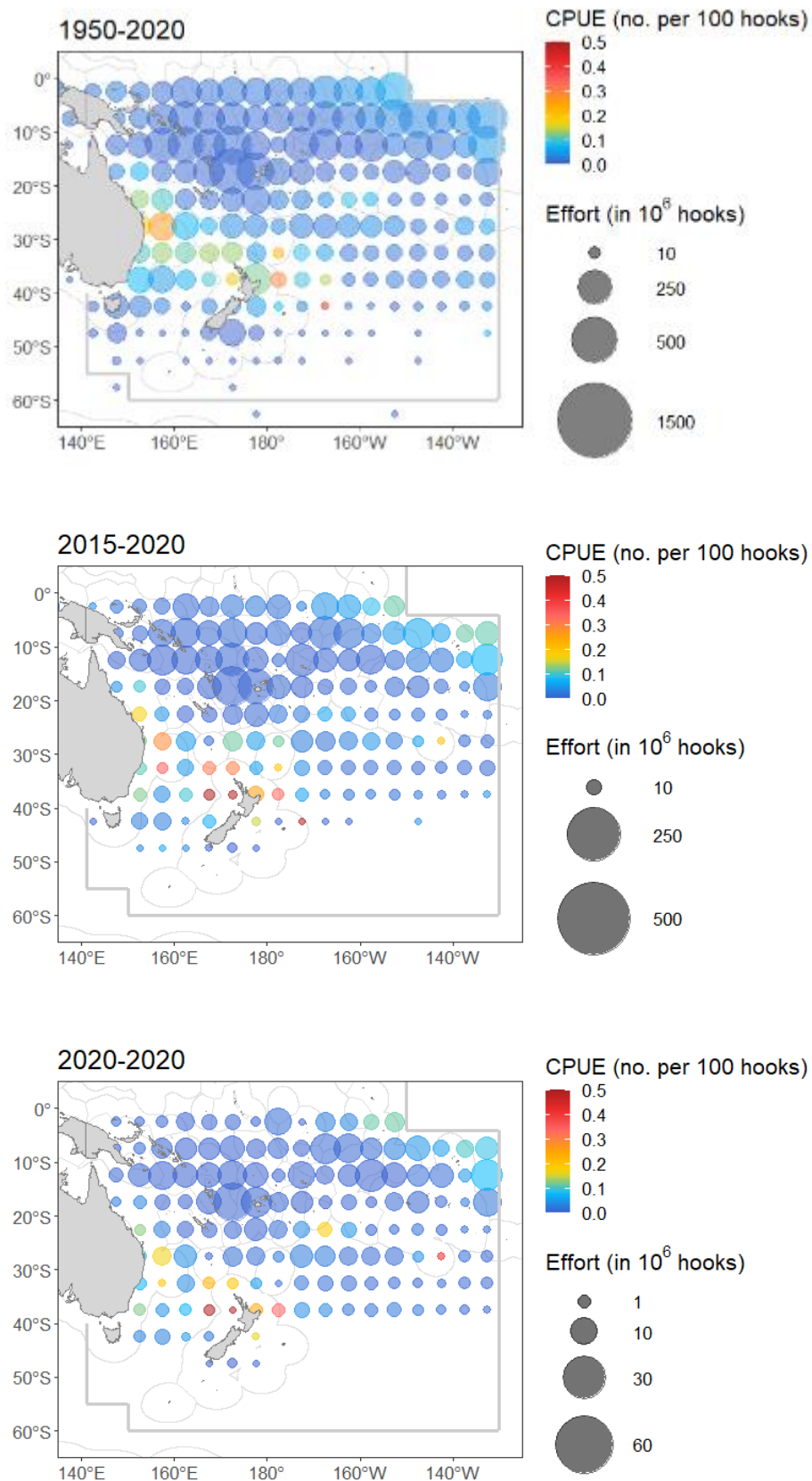


Figure 5. Distribution of South Pacific SWORDFISH longline CPUE and effort for selected periods

Periods: 1950-2020 (top), 2015-2020 (middle) and 2020 (bottom).

Figure 6 Distribution of South Pacific longline swordfish catch (numbers), by 5-year periods.
Periods: 1995–1999, 2000–2004, 2005–2009, 2010–2014, 2015–2019

