



**TECHNICAL AND COMPLIANCE COMMITTEE**  
**Fifteenth Regular Session**  
25 September – 1 October 2019  
Pohnpei, Federated States of Micronesia

---

**SUMMARY OF SUBMISSIONS OF ANNUAL REPORT PART 1 AND ANNUAL REPORT  
PART 2**

---

WCPFC-TCC15-2019-IP01\_rev1<sup>1</sup>  
3 September 2019

**Paper prepared by the Secretariat**

**Purpose**

1. The purpose of this paper is to provide information on the annual reporting submissions by CCMs to the Commission as required by the WCPFC Convention.

**Background**

2. The WCPF Convention Articles 23 and 25 require CCMs to annually provide information to the Commission on fishing activities by its flagged vessels. Since WCPFC2, a two-part reporting format has been used by CCMs to report on their fishing activities and the implementation of conservation and management measures for the preceding year. Annual Report Part 1 is intended to provide a summary of each CCMs fisheries, research and statistics information for the preceding calendar year and recently includes specific CMM-related reporting requirements for the same period. Annual Report Part 2 is a report on management and compliance measures taken by CCMs in the previous year. The templates for Annual Report Part 1 and Annual Report Part 2 are based on previous years' reports and takes into account specific decisions of the Commission, including adopted CMMs. The dates for submission and the formats for reporting have become standardized over recent years.

**Developments in 2019**

3. In 2019, a new structure for the Annual Report Part 2 was introduced, that considered the revised *Conservation and Management Measure for Compliance Monitoring Scheme* (CMM 2018-07) and the updated list of obligations approved at WCPFC15 for review in 2019. The online facility for CCMs to complete their Annual Report Part 2 was prepared and the availability of this online template was announced on 29 March 2019 in the WCPFC Circular No.2019/20.

4. As was the case in 2018, in 2019 for some CCMs, the Secretariat undertook to pre-populate some parts of their Annual Report Part 2 with "N/A" (Not Applicable) answers. This approach was applied for Small Island Development States (SIDS) CCMs in respect of certain obligations that the Secretariat understands to not have applied to SIDS in 2018. The approach was also applied in respect of obligations only applying to flag CCMs for those CCMs who in 2018 did not have any vessels listed on the Record of Fishing Vessels. The Secretariat also

---

<sup>1</sup> Only change since issuance on 11 August 2019 is one correction in Table 1 of the Annex to this paper

ensured that these pre-populated answers in each CCMs Annual Report Part 2 did remain editable so that CCMs could review and correct the report as needed.

5. In 2019, the Secretariat continued its assistance to CCMs, particularly SIDS CCMs. In April 2019, the Secretariat attended the FFA MCS Working Group (FFA MCSWG) meeting and in collaboration with the FFA Secretariat, assisted FFA Member CCMs with developing their Annual Report Part 2. In addition, the Secretariat also attended the SPC 12<sup>th</sup> Tuna Data Workshop and collaborated with SPC and FFA Secretariats in assisting many Pacific Island CCMs, Indonesia, Philippines and Vietnam with their Annual Reports Part 1. Furthermore, throughout the year, the Secretariat was able to work with and assist many CCMs where required including electronically, via email and skype, with their reporting obligations, in particular the Annual Reports Part 2 including in-country meetings with Federated States of Micronesia and Kiribati. The assistance was provided in response to specific requests from CCMs, or CCMs accepting the Secretariat's offer to assist.

6. Completion and submission by CCMs of their Annual Report Part 2 online assists the Secretariat with transferring the relevant data for the Commission approved list of obligations to be assessed in CMR, from Annual Report Part 2 ("CCM Assessment" and "CCM Implementation"), into the draft Compliance Monitoring Report. In addition, the Secretariat can check on each CCM's activity in completing their Annual Report Part 2, and can provide assistance to CCMs remotely and send out reminders to those yet to complete their report or check if there were parts of the report that may have been overlooked. These efforts, together with the fact that the deadline for submission of these reports were evaluated in the Compliance Monitoring Scheme (CMS) process may have continued to contribute, in part, to the improvements in timely submission by CCMs of their Annual Reports over the years.

7. This year, 31 CCMs Annual Reports Part 1 were received on time while one was received past the deadline and three are yet to be received at the time of writing this paper. Similarly, thirty CCMs Annual Report Part 2 were received on time, five were received past the deadline and at the time of writing this paper, the Secretariat is yet to receive one CCMs Annual Report Part 2.

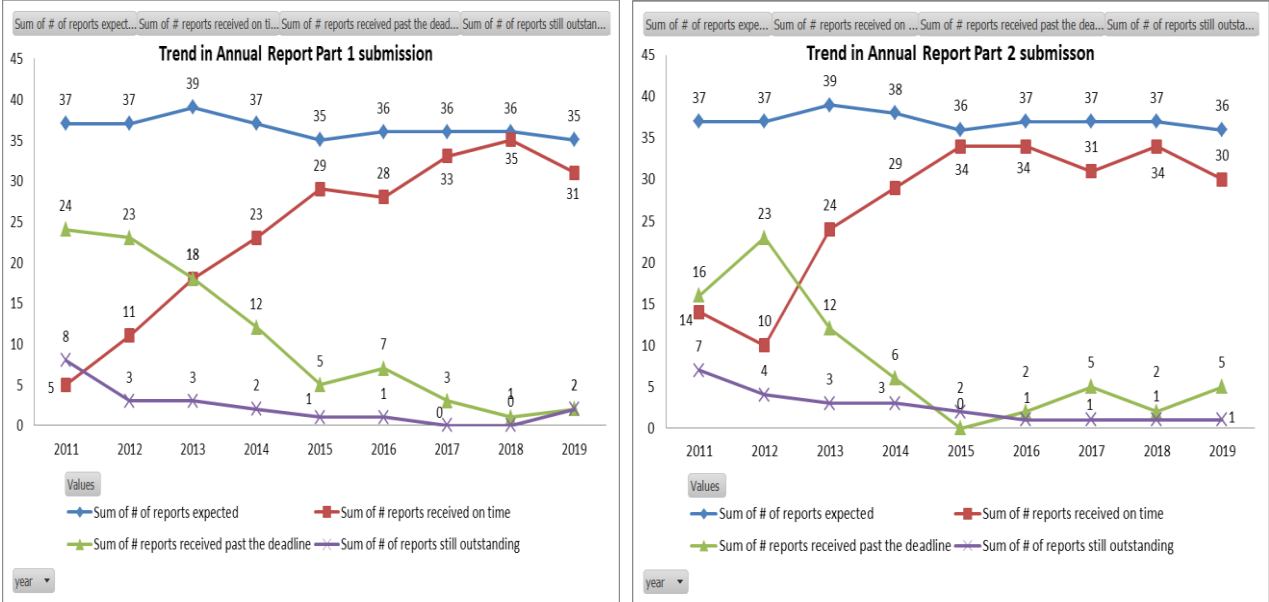
8. Table 1 in the Annex to this paper provides a summary of the timelines of the submission of Annual Reports Part 1 and Part 2 in 2019, covering 2018 activities. It also provides, for comparison, submission of Annual Reports Part 1 and Part 2 for the past few years, after the Compliance Monitoring Scheme was first adopted in 2010.

### **Annual Report Part 1 & Part 2 and the Compliance Monitoring Scheme (CMS)**

9. The Annual Reports Part 1 and 2 are two important sources of information for the preparation of the draft Compliance Monitoring Report (dCMR) prepared pursuant to paragraph 22 of CMM 2018-07. The CCM reported data in Annual Report Part 2 (YES/NO/not applicable and any explanations) for the Commission approved list of obligations to be assessed in CMR can be transferred into the dCMR. In addition, CCM reported data in Annual Report Part 1 related to required reports under CMMs and/or descriptions of annual fishing activity during the previous year are referenced in the dCMR. Presently the Secretariats work in preparing the dCMR continues to rely on the timely submissions of these two reports. Advice of availability online for 37 CCMs of their relevant dCMRs was announced on 2 August 2019 in Circular No. 2019/41.

10. Figure 1 below shows the trend in submission of Annual Report Part 1 and Part 2, respectively over the last 9 years.

**Figure 1: Trend in Annual Report Part 1 and Part 2 submissions**



**Administration notes**

11. CCMs are reminded that the Secretariat is available to assist with any queries related to, or in their preparation of, their Annual Reports. All enquiries related to Annual Reports should be directed to [contact.ar@wcpfc.int](mailto:contact.ar@wcpfc.int).

**Recommendation**

12. TCC15 is invited to note this paper.

Table 1: Submissions of Annual Report Part 1 and Part 2 for 2019 (covering 2018 activities) as well as the past few years

CCM	Annual Report Part 1 submission						Annual Report Part 2 submission						CCM
	2014 (covering 2013 activities) due 7 Jul 2014	2015 (covering 2014 activities) due 6 Jul 2015	2016 (covering 2015 activities) due 4 Jul 2016	2017 (covering 2016 activities) due 10 Jul 2017	2018 (covering 2017 activities) due 9 Jul 2018	2019 (covering 2018 activities) due 13 Jul 2019	2019 (covering 2018 activities) due 1 Jul 2019	2018 (covering 2017 activities) due 1 Jul 2018	2017 (covering 2016 activities) due 1 Jul 2017	2016 (covering 2015 activities) due 1 Jul 2016	2015 (covering 2014 activities) due 1 Jul 2015	2014 (covering 2013 activities) due 1 Jul 2014	
AU	30-Jun-14	2-Jul-15	29-Jun-16	9-Jul-17	4-Jul-18	11-Jul-19	1-Jul-19	1-Jul-18	30-Jun-17	30-Jun-16	30-Jun-15	26-Jun-14	AU
CA	21-Jun-14	1-Jul-15	8 Jun 16 22 Jun (rev1)	26-Jun-17	28-Jun-18	27-Jun-19	29-Jun-19	23-Jun-18	27-Jul-17	30-Jun-16	30-Jun-15	1-Jul-14	CA
CN	24-Jul-14	6-Jul-15	4-Jul-16	10-Jul-17	9-Jul-18	12-Jul-19	30-Jun-19	29-Jun-18	30-Jun-17	30-Jun-16	30-Jun-15	1-Jul-14	CN
CK	6-Jul-14	4-Jul-15	3-Jul-16	12 Jul 17 (rev1)	9-Jul-18	13-Jul-19	1-Jul-19	30-Jun-18	23-Jun-17	25-Jun-16	30-Jun-15	1-Jul-14	CK
EU	7-Jul-14	6-Jul-15	4-Jul-16	7-Jul-17	6-Jul-18	13-Jul-19	1-Jul-19	1-Jul-18	30-Jun-17	1-Jul-16	1-Jul-15	1-Jul-14	EU
FM	25-Jun-14	4-Jul-15	4-Jul-16	9-Jul-17	9-Jul-18	13-Jul-19	30-Jun-19	29-Jun-18	29-Jun-17	30-Jun-16	23-Jun-15	26-Jun-14	FM
FJ	3-Jul-14	5-Jul-15	23-Jun-16	10-Jul-17	8-Jul-18	12-Jul-19	30-Jun-19	29-Jun-18	30-Jun-17	1-Jul-16	25-Jun-15	26-Jun-14	FJ
FR							1-Jul-19	22-Jun-18	1-Jul-17	1-Jul-16			FR
PF	25-Jun-14	20-Jun-15	1-Jul-16	7-Jul-17	7-Jul-18	11-Jul-19	29-Jun-19	29-Jun-18	27-Jun-17	1-Jul-16	30-Jun-15	24-Jun-14	PF
ID	7-Jul-14	7-Jul-15	1-Jul-16	8-Jul-17	6-Jul-18	13-Jul-19	1-Jul-19	29-Jun-18	22-Jun-17	1-Jul-16	1-Jul-15	1-Jul-14	ID
JP	7-Jul-14	5-Jul-15	4-Jul-16	5-Jul-17	4-Jul-18	13-Jul-19	1-Jul-19	28-Jun-18	30-Jun-17	1-Jul-16	30-Jun-15	1-Jul-14	JP
KI	3-Aug-14	5-Jul-15	4-Jul-16	10-Jul-17	9-Jul-18	16-Jul-19	28-Jun-19	28-Jun-18	30-Jun-17	28-Jun-16	30-Jun-15	1-Jul-14	KI
KR	7-Jul-14	5-Jul-15	4-Jul-16	10-Jul-17	9-Jul-18	13-Jul-19	1-Jul-19	29-Jun-18	1-Jul-17	30-Jun-16	30-Jun-15	1-Jul-14	KR
MH	28-Aug-14	5-Jul-15	4-Jul-16	10-Jul-17	9-Jul-18	12-Jul-19	1-Jul-19	29-Jun-18	1-Jul-17	1-Jul-16	1-Jul-15	1-Jul-14	MH
NR	25-Jun-14	5-Jul-15	30-Jun-16	21-Jun-17	22-Jun-18	12-Jul-19	29-Jun-19	27-Jun-18	26-Jun-17	21-Jun-16	1-Jul-15	16-Jun-14	NR
NC	4-Jul-14	3-Jul-15	29-Jun-16	5-Jul-17	4-Jul-18	12-Jul-19	1-Jul-19	28-Jun-18	30-Jun-17	30-Jun-16	30-Jun-15	30-Jun-14	NC
NZ	1-Jul-14	5-Jul-15	4-Jul-16	9-Jul-17	6-Jul-18	12-Jul-19	1-Jul-19	29-Jun-18	30-Jun-17	27-Jun-16	1-Jul-15	30-Jun-14	NZ
NU	5-Jul-14	5-Jul-15	1-Jul-16	20-Jul-17	9-Jul-18		7-Jul-19	20-Jun-18	27-Jun-17	30-Jun-16	1-Jul-15	1-Jul-14	NU
PW	3-Jul-14	4-Jul-15	20-Sep-16	9-Jul-17	6-Jul-18	13-Jul-19	31-Jul-19	27-Jun-18	30-Jun-17	1-Jul-16	1-Jul-15	29-Sep-14	PW
PG	11-Jul-14	15-Jul-15	26-Sep-16	27-Sep-17	9-Jul-18	13-Jul-19	3-Jul-19	1-Jul-18	26-Sep-17	4-Jul-16	1-Jul-15	28-Aug-14	PG
PH	7-Jul-14	1-Jul-15	1-Jul-16	29-Jun-17	1-Jul-18	1-Jul-19	1-Jul-19	1-Jul-18	29-Jun-17	1-Jul-16	1-Jul-15	30-Jun-14	PH
WS	8-Jul-14	5-Jul-15	4-Jul-16	10-Jul-17	9-Jul-18	13-Jul-19	1-Jul-19	20-Jun-18	1-Jul-17	30-Jun-16	1-Jul-15	1-Jul-14	WS
SB	1-Aug-14	4-Jul-15	30-Jun-16	9-Jul-17	9-Jul-18	12-Jul-19	1-Jul-19	28-Jun-18	4-Jul-17	30-Jun-16	1-Jul-15	15-Jul-14	SB
TW	7-Jul-14	6-Jul-15	4-Jul-16	10-Jul-17	9-Jul-18	12-Jul-19	1-Jul-19	1-Jul-18	1-Jul-17	1-Jul-16	1-Jul-15	1-Jul-14	TW
TK	6-Jul-14	5-Jul-15	21-Jun-16	15-May-17	9-Jul-18	6-Jun-19	26-Jun-19	1-Jun-18	15-May-17	28-Apr-16	25-Jun-15	17-Jun-14	TK
TO	4-Jul-14	3-Jul-15	6/28/2016 1 Jul (rev1)	6-Jul-17	28-Jun-18	11-Jul-19	29-Jun-19	11-Jun-18	23-Jun-17	22-Jun-16	30-Jun-15	29-Jun-14	TO
TV	6-Jul-14	6-Jul-15	4-Jul-16	10-Jul-17	9-Jul-18	12-Jul-19	1-Jul-19	27-Jun-18	30-Jun-17	30-Jun-16	30-Jun-15	30-Jun-14	TV
US	5-Jul-14	5-Jul-15	1-Jul-16	6-Jul-17	7-Jul-18	11-Jul-19	29-Jun-19	1-Jul-18	30-Jun-17	30-Jun-16	1-Jul-15	28-Jun-14	US
VU	17-Jul-14	5-Jul-15	2-Jul-16	10-Jul-17	9-Jul-18	13-Jul-19	1-Jul-19	29-Jun-18	9-Jul-17	1-Jul-16	1-Jul-15	27-Jun-14	VU
WF				2-Nov-17	8-Jun-18	7-Jun-19							WF
Cooperating Non-Member													Cooperating Non-Member
BZ	28-Jul-14											1-Jul-14	BZ
KP													KP
EC	13-Sep-14	25-Sep-15	22-Sep-16	9-Jul-17	7-Jul-18	26-Jul-19	9-Jul-19	1-Jul-18	5-Jul-17	1-Jul-16	1-Jul-15	1-Jul-14	EC
SV	8-Jul-14	7-Jul-15	25-Jun-16	6-Jul-17	13-Jul-18	13-Jul-19	1-Jul-19	10-Jul-18	1-Jul-17	20-May-16	1-Jul-15	5-Jul-14	SV
MX	5-Jul-14	23-Jun-15	22-Jun-16	28-Apr-17	28-Jun-18			27-Jun-18	25-Apr-17	20-Jun-16	22-Jun-15	1-Jul-14	MX
PA	26-Sep-14	30-Jun-15	2-Dec-16	30-Jun-17	22-Jun-18		3-Jul-19	1-Jul-18	29-Sep-17	1-Jul-16	30-Jun-15	26-Sep-14	PA
TH	17-Jul-14	7-Jul-15	29-Jul-16	7-Jul-17	9-Jul-18	2-Jul-19	1-Jul-19	1-Jul-18	30-Jun-17	1-Aug-16	1-Jul-15	1-Jul-14	TH
VN	14-Jul-14	4-Jul-15	14-Jul-16	10-Jul-17	9-Jul-18	13-Jul-19	1-Jul-19	1-Jul-18	30-Jun-17	30-Jun-16	29-Jun-15	14-Jul-14	VN
KN													KN
SN													SN
LR			28-Sep-16	29-Jun-17	3-Jul-18	25-Jun-19	25-Jun-19	3-Jul-18	29-Jun-17	1-Jul-16			LR

Note, CCMs sometimes submit revise versions of either Part 1 and/or Part 2. The date use here is the first date the report was received.

Not applicable

Outstanding reports @ 31 Jul 2019

Date Report received after the due date