



**SCIENTIFIC COMMITTEE
FIFTEENTH REGULAR SESSION**

Pohnpei, Federated States of Micronesia
12 – 20 August 2019

ESTIMATES OF ANNUAL CATCHES IN THE WCPFC STATISTICAL AREA

WCPFC-SC15-2019/ST IP-1

Paper prepared by

Oceanic Fisheries Programme (OFP)
Pacific Community (SPC)
Noumea, New Caledonia

Introduction

Estimates of annual catches in the WCPFC Statistical Area (Figure 1) are presented for target tuna species, i.e., albacore (*Thunnus alalunga*) bigeye (*Thunnus obesus*), skipjack (*Katsuwonus pelamis*) and yellowfin (*Thunnus albacares*), and major billfish species, i.e., black marlin (*Makaira indica*), blue marlin (*Makaira mazara*), striped marlin (*Tetrapturus audax*) and swordfish (*Xiphias gladius*). Estimates of catches of southern bluefin tuna (*Thunnus maccoyii*) are compiled by the Commission for the Conservation of Southern Bluefin Tuna (CCSBT).

Target Tuna Species

Tables 1–7 and Figures 2 and 3 present estimates of annual catches of target tunas in the WCPFC Statistical Area. For a breakdown of recent catch estimates by gear and flag, see WCPFC (2018). For discussion regarding trends, see Williams and Reid (2019).

Recent studies using observer data (e.g. Lawson, 2007, Lawson, 2010, Lawson, 2012, Hampton and Williams, 2011, Hampton and Williams, 2015, Hampton and Williams, 2016, Hampton and Williams, 2017) show that the purse seine logsheet-reported catch, mainly for associated sets, should contain higher quantities of yellowfin and bigeye tuna that have been misreported as skipjack tuna. Purse-seine catch estimates that have been adjusted with species compositions determined from observer grab samples corrected for size selectivity bias (see Lawson, 2010, Lawson, 2012 and Lawson, 2013) are presented as the official purse-seine catch estimates in Table 5. All composite tables and figures referring to purse-seine species catch are consistent with the Table 5 estimates of purse-seine catches of skipjack, yellowfin and bigeye tuna.

Tables 7–10 present estimates of annual catches of target tunas in the WCPO Area and the EPO Area (Figure 1) by gear type. Tables 11–13 present estimates of annual catches of target tunas for the WCPO, the EPO and the Pacific Ocean by species. Tables 14 and 15, and Figures 4 and 5 present global catches of target tunas, by species and ocean area, respectively.

Tuna Discards

Observer data have been used to determine the discard rates for albacore, bigeye and yellowfin and bigeye caught by longliners (Table 16) and skipjack, yellowfin and bigeye caught by purse seiners (Table 17).

Tuna discards by longliners in the WCPFC Statistical Area during 1994–2018 were estimated by applying discard rates by flag and year, determined from observer data, to tuna species catch estimates, by flag and year, and then summing the tuna discards (by species) across all flags. Discard rates for flag/year combinations where there were insufficient data (defined as (i) less than 10 observer trips or (ii) less than 500 fish samples available), were substituted with discard rates determined for year (with all flags combined). The average discard rate for the three target tuna species caught by longliners during the period was 2.1%. During 2018, the estimated tuna discard was 2.3% and based on available observer data, most of the bigeye and yellowfin tuna discards comprised of fish less than 95 cm (Figures 6 and 7), noting that many discarded tuna are also not available to be measured by the observer.

Tuna discards by purse seiners in the WCPFC Statistical Area during 1995–2018 were estimated by applying discard rates by flag, year and school association (unassociated and associated), determined from observer data, to tuna species catch estimates, by flag, year and school association, and then summing the tuna discards (by species) across all flags. Discard rates for flag/year/school association combinations where there were insufficient data (defined as (i) less than 5 observer trips or (ii) less than 1,000 mt of catch observed), were substituted with discard rates determined for school association (with all years/flags combined) for years prior to 2008, and substituted with discard rates determined for year/school association (with all flags combined) for years since 2008. This method was used since an analysis of variance of discard rates for skipjack, yellowfin and bigeye caught by purse seiners indicated that species, school association and flag, but not year, were significant predictors. However, management measures (CMM 2009-02) were established to restrict the discard of tuna, which means that the year effect has been considered in the estimation process for recent years. The average discard rate for the three target tuna species caught by purse seiners during this

period was 2.5%, with an estimated 0.9% discarded in 2018. [Note that the reporting of purse-seine discards by vessel is a requirement under CMM 2009-02 and is currently independent to the estimates produced in this paper].

The submission of annual estimates of discards for the WCPFC key species is a mandatory requirement under the *Scientific Data to be Provided to the Commission*¹ covering data for years 2018 onwards.

Major Billfish Species

Table 18 presents estimates of commercial catches of the four major billfish species by gear type. Table 19 and Figure 8 present estimates of the major billfish catches for all gear types combined. Tables 20 and 21 present estimates of commercial catches of striped marlin and swordfish in the WCPFC Statistical Area north and south of the equator respectively. Table 22 present estimates of commercial catches of albacore, striped marlin and swordfish in the Pacific Ocean, south of the equator.

REFERENCES

- Hampton J. & P.G. Williams 2011. Misreporting of purse seine catches of skipjack and yellowfin-bigeye on logsheets. Working Paper ST-WP-2. Seventh Regular Session of the Scientific Committee of the WCPFC. Pohnpei, FSM. 9th–17th August 2011.
- Hampton J. & P.G. Williams 2016. ANNUAL ESTIMATES OF PURSE SEINE CATCHES BY SPECIES BASED ON ALTERNATIVE DATA SOURCES. Working Paper ST-WP-3. Twelfth Regular Session of the Scientific Committee of the WCPFC. Pohnpei, Federated States of Micronesia. (SC12) 3–11 August 2016.
- Hampton J. & P.G. Williams 2017. ANNUAL ESTIMATES OF PURSE SEINE CATCHES BY SPECIES BASED ON ALTERNATIVE DATA SOURCES. Working Paper ST-IP-3. Thirteenth Regular Session of the Scientific Committee of the WCPFC. Rarotonga, Cook Islands. 9–17 August 2017.
- Lawson, T.A. 2007. Further analysis of the proportion of bigeye in ‘yellowfin plus bigeye’ caught by purse seiners in the WCPFC Statistical Area. Information Paper ST-IP-5. Third Regular Session of the WCPFC Scientific Committee, 13–24 August 2006, Honolulu, Hawaii, United States of America. Oceanic Fisheries Programme, Secretariat of the Pacific Community, Noumea, New Caledonia.
- Lawson, T.A. 2010. Update on the estimation of selectivity bias based on paired spill and grab samples collected by observers on purse seiners in the Western and Central Pacific Ocean. Working Paper ST-WP-2. Sixth Regular Session of the Scientific Committee of the WCPFC. Nuku’alofa, Tonga. 10–19 August 2010.
- Lawson, T.A. 2012. Estimation of the species composition of the catch by purse seiners in the Western and Central Pacific Ocean using grab samples and spill samples collected by observers. Working Paper ST-WP-3. Eighth Regular Session of the Scientific Committee of the WCPFC. Busan, Republic of Korea. 7–15 August 2012.
- Lawson, T.A. 2013. Estimation of the species composition of the catch by purse seiners in the Western and Central Pacific Ocean – a response to recent independent reviews. Working Paper ST-WP-3. Ninth Regular Session of the Scientific Committee of the WCPFC. Pohnpei, FSM. 6–14 August 2013.
- WCPFC. 2018. WCPFC Tuna Fishery Yearbook, 2017. Western and Central Pacific Fisheries Commission, Pohnpei, Federated States of Micronesia.
- Williams, P. & C. Reid. 2019. Overview of tuna fisheries in the Western and Central Pacific Ocean, Including Economic Conditions – 2018. Working Paper GN-WP-1. Fifteenth Regular Session of the Scientific Committee of the WCPFC (SC15). Pohnpei, Federated States of Micronesia. 12–20 August 2019.

¹ See https://www.wcpfc.int/system/files/Att%20G_Revised%20SciData%20decision.pdf

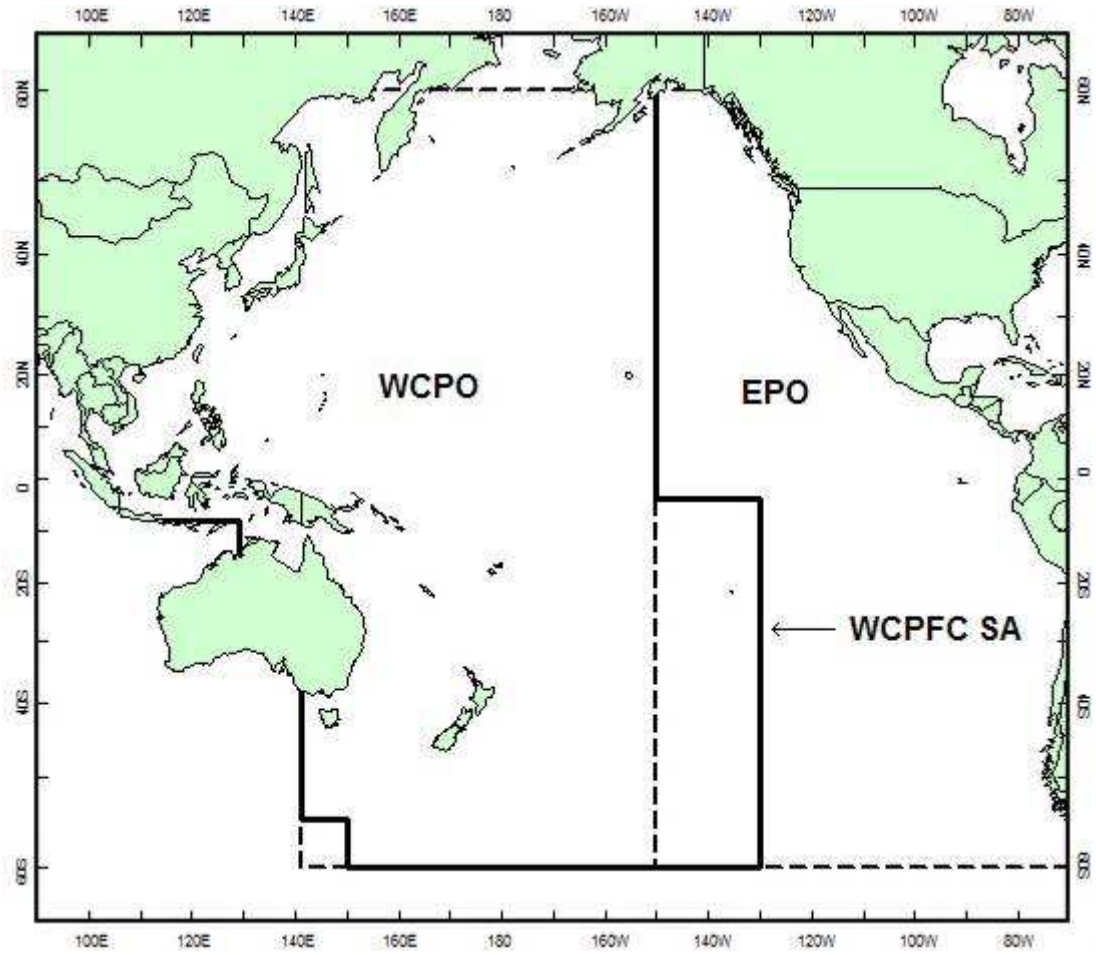


Figure 1. WCPFC Statistical Area (WCPFC SA), the Western and Central Pacific Ocean (WCPO) Area and the Eastern Pacific Ocean (EPO) Area

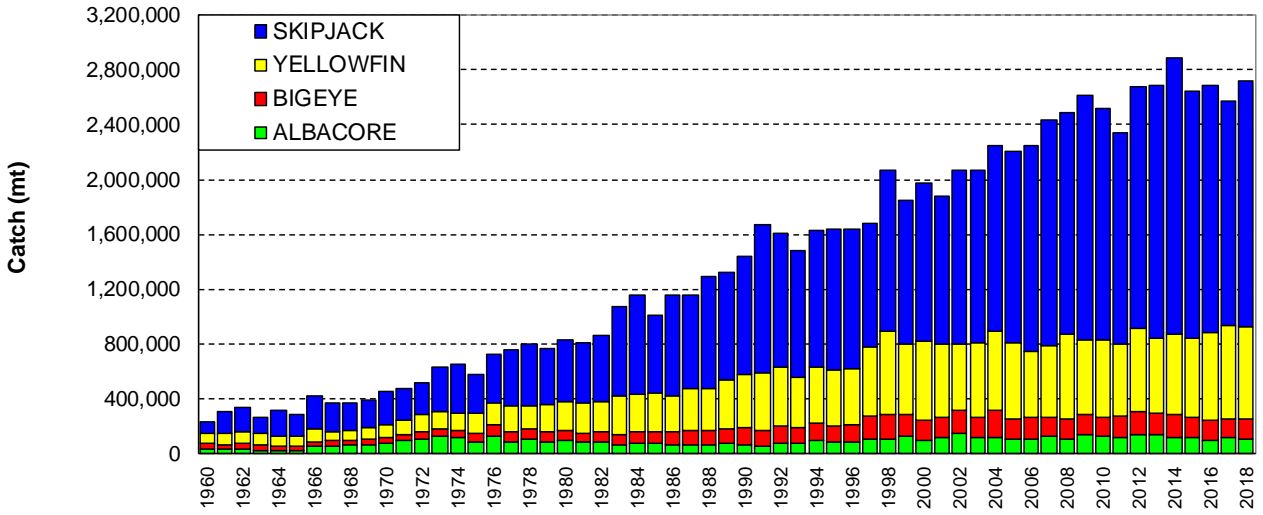


Figure 2. Catches of tuna in the WCPFC Statistical Area, by species

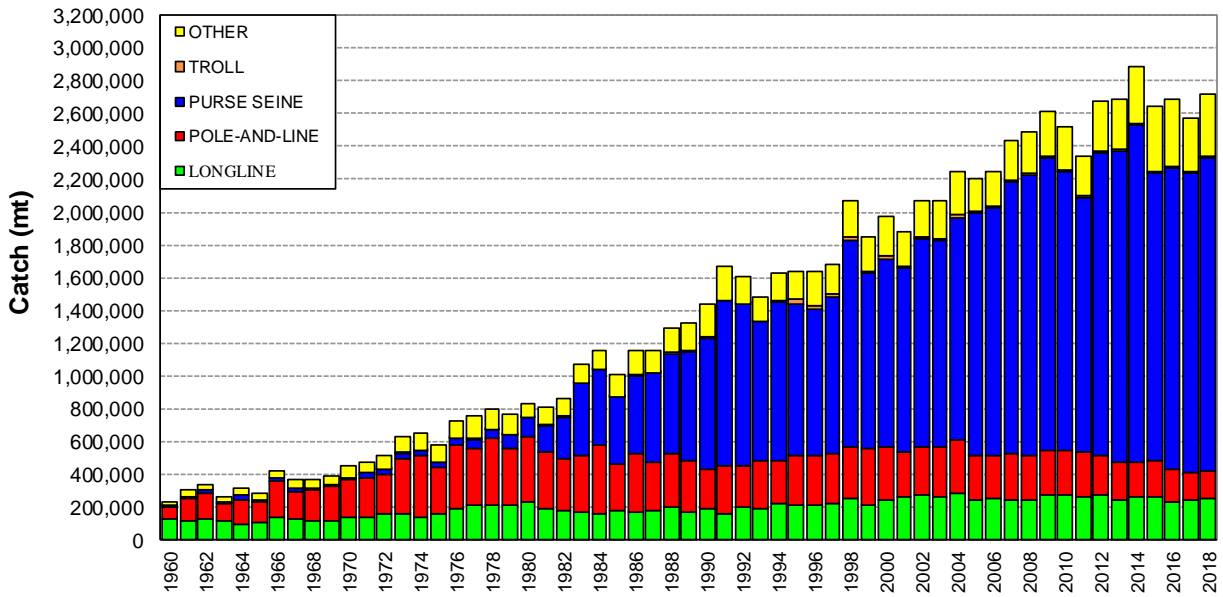


Figure 3. Catches of tuna in the WCPFC Statistical Area, by gear type

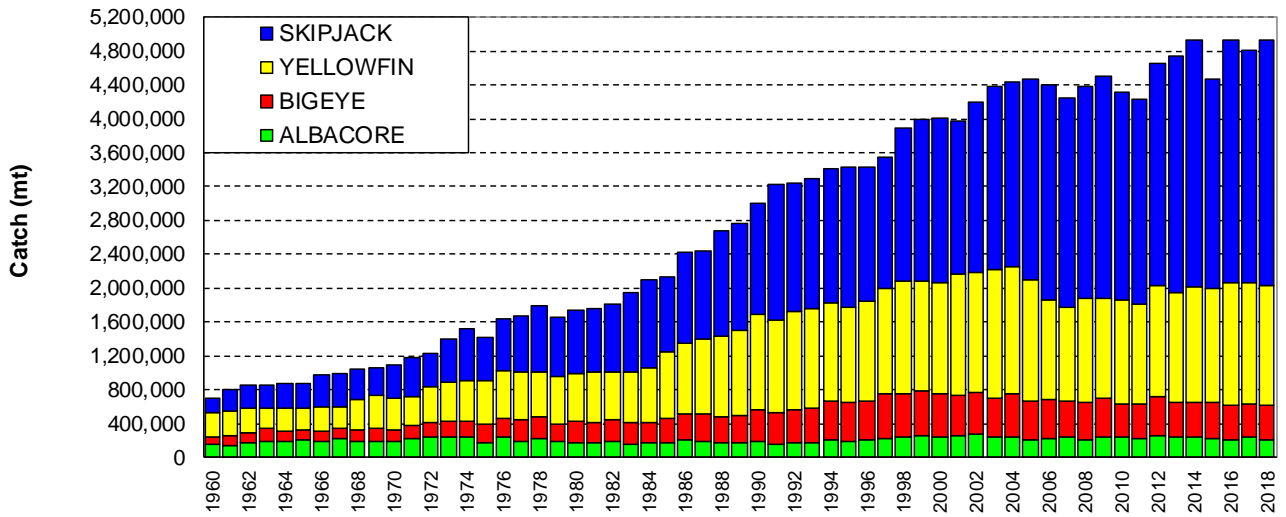


Figure 4. Global catches of tuna, by species

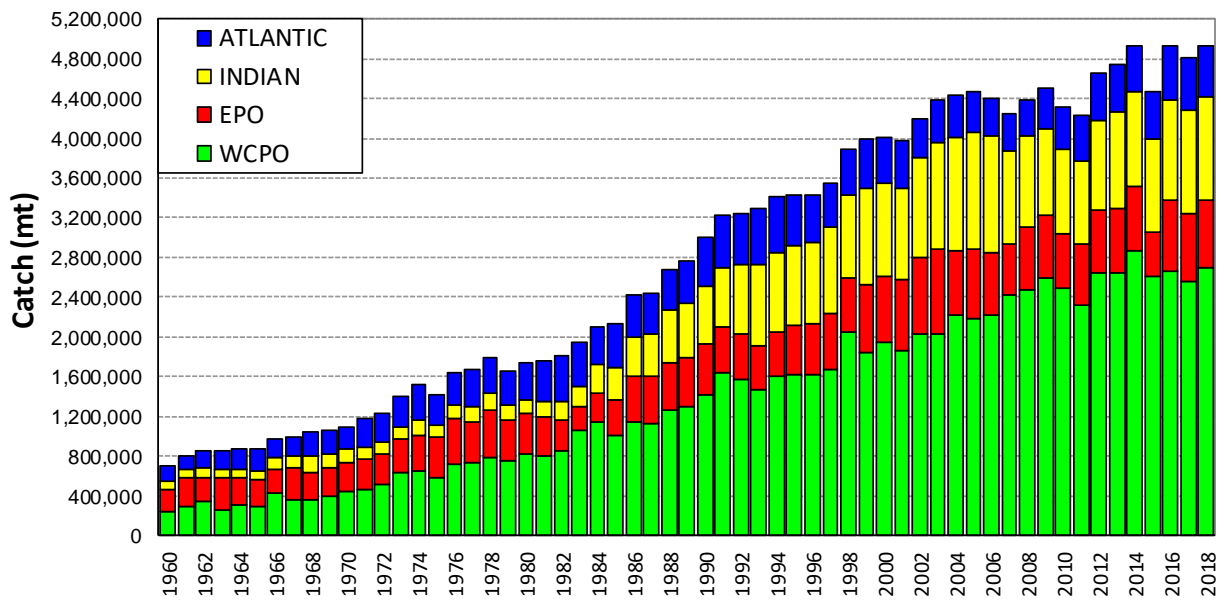


Figure 5. Global catches of tuna, by ocean area

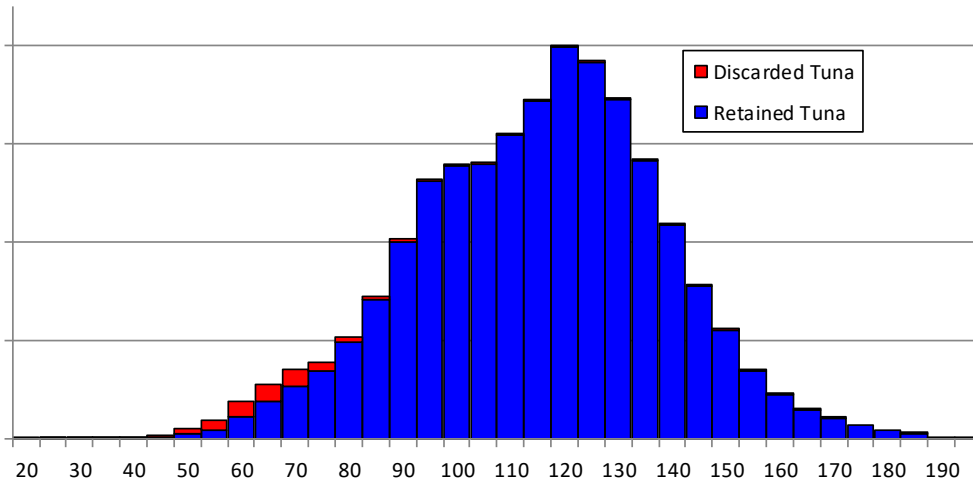


Figure 6. Longline bigeye tuna discard by size categories, 2015–2018.
(Based on available unweighted, observer data)

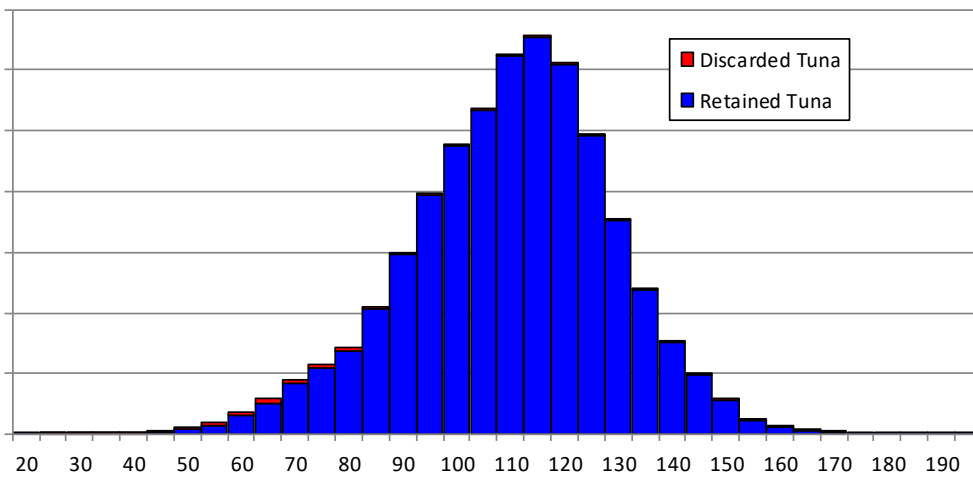


Figure 7. Longline yellowfin tuna discard by size categories, 2015–2018.
(Based on available unweighted, raw observer data)

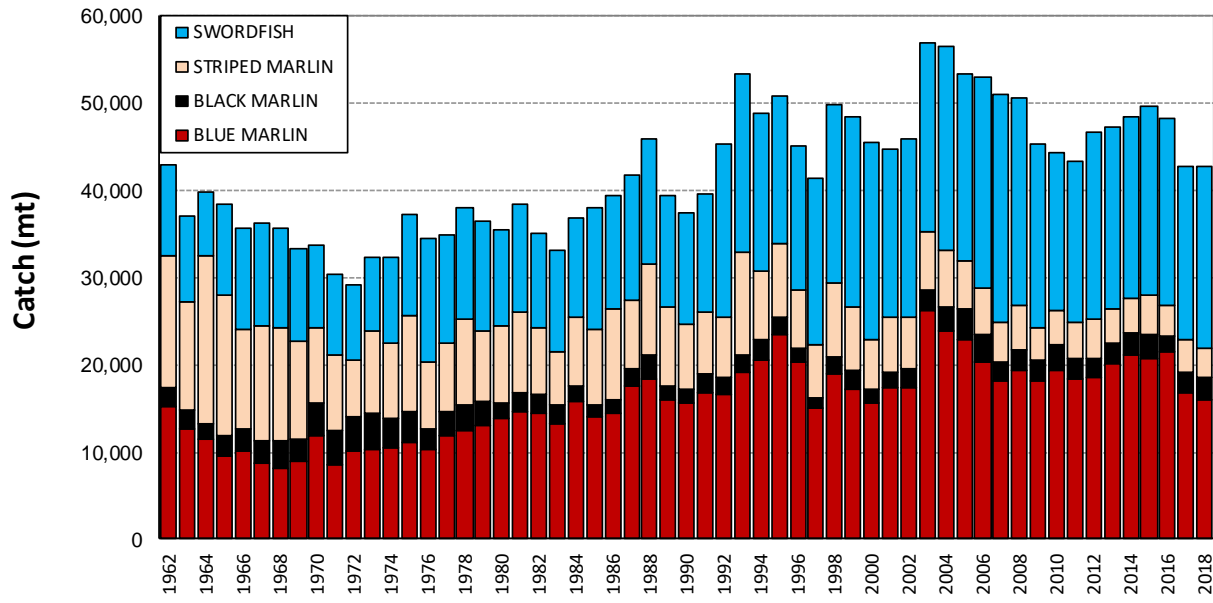


Figure 8. Commercial catches of major billfish species in the WCPFC Statistical Area

Table 1. Catches of target tunas in the WCPFC Statistical Area, by species

YEAR	ALBACORE		BIGEYE		SKIPJACK		YELLOWFIN		TOTAL
	TONNES	%	TONNES	%	TONNES	%	TONNES	%	
1960	31,463	13	45,025	19	89,938	37	73,667	31	240,093
1961	32,922	11	39,380	13	156,736	51	75,438	25	304,476
1962	37,602	11	36,868	11	181,624	53	83,944	25	340,038
1963	26,815	10	44,346	16	122,703	46	75,756	28	269,620
1964	26,687	8	32,391	10	182,918	58	74,154	23	316,150
1965	28,735	10	31,333	11	155,221	54	73,635	25	288,924
1966	52,284	12	33,187	8	249,514	58	93,099	22	428,084
1967	58,822	16	36,749	10	204,837	55	68,932	19	369,340
1968	64,213	17	30,426	8	195,027	52	81,908	22	371,574
1969	72,106	18	34,358	9	203,327	51	87,274	22	397,065
1970	74,350	16	40,094	9	242,215	53	99,159	22	455,818
1971	100,737	21	43,220	9	228,552	48	105,127	22	477,636
1972	109,655	21	57,142	11	237,804	46	116,185	22	520,786
1973	131,149	21	48,854	8	328,718	52	128,553	20	637,274
1974	115,162	18	52,765	8	356,360	54	131,428	20	655,715
1975	84,651	15	69,280	12	288,708	49	141,073	24	583,712
1976	132,947	18	82,730	11	357,624	49	152,716	21	726,017
1977	83,171	11	83,293	11	404,033	54	183,607	24	754,104
1978	111,161	14	66,177	8	450,528	56	176,485	22	804,351
1979	86,007	11	73,205	9	414,178	54	198,230	26	771,620
1980	95,156	11	72,169	9	452,495	54	217,517	26	837,337
1981	88,095	11	64,043	8	437,902	54	219,170	27	809,210
1982	89,496	10	72,548	8	479,672	56	220,347	26	862,063
1983	65,988	6	77,285	7	651,702	61	275,289	26	1,070,264
1984	74,540	6	84,994	7	731,096	63	270,377	23	1,161,007
1985	77,060	8	87,998	9	570,624	56	279,747	28	1,015,429
1986	71,757	6	93,009	8	730,058	63	259,163	22	1,153,987
1987	63,645	6	109,311	9	673,306	58	306,761	27	1,153,023
1988	67,948	5	109,019	8	812,803	63	303,860	23	1,293,630
1989	73,533	6	108,632	8	787,713	60	351,489	27	1,321,367
1990	63,872	4	126,404	9	857,072	59	394,852	27	1,442,200
1991	58,322	3	111,513	7	1,077,401	65	421,555	25	1,668,791
1992	74,452	5	131,284	8	971,559	61	428,275	27	1,605,570
1993	77,496	5	111,952	8	926,621	62	368,311	25	1,484,380
1994	96,461	6	128,347	8	990,463	61	410,726	25	1,625,997
1995	91,750	6	109,947	7	1,020,888	62	412,270	25	1,634,855
1996	91,140	6	120,844	7	1,011,978	62	415,066	25	1,639,028
1997	112,900	7	165,739	10	906,514	54	496,034	30	1,681,187
1998	112,465	5	177,286	9	1,171,291	57	604,070	29	2,065,112
1999	131,066	7	157,882	9	1,046,141	56	516,752	28	1,851,841
2000	101,171	5	147,422	7	1,154,538	59	569,436	29	1,972,567
2001	121,561	6	149,743	8	1,080,010	57	533,643	28	1,884,957
2002	147,793	7	168,502	8	1,260,536	61	487,639	24	2,064,470
2003	122,949	6	141,820	7	1,256,139	61	545,661	26	2,066,569
2004	122,343	5	192,564	9	1,348,243	60	581,810	26	2,244,960
2005	105,135	5	150,920	7	1,397,584	63	551,857	25	2,205,496
2006	104,986	5	158,858	7	1,497,594	67	487,126	22	2,248,564
2007	126,701	5	144,189	6	1,650,702	68	516,990	21	2,438,582
2008	104,966	4	155,014	6	1,620,614	65	610,003	24	2,490,597
2009	135,476	5	152,987	6	1,785,371	68	543,688	21	2,617,522
2010	124,902	5	140,413	6	1,690,374	67	563,000	22	2,518,689
2011	115,766	5	161,204	7	1,536,151	66	525,167	22	2,338,288
2012	143,215	5	164,887	6	1,760,949	66	605,471	23	2,674,522
2013	137,770	5	155,120	6	1,846,182	69	552,456	21	2,691,528
2014	121,772	4	160,891	6	2,008,934	70	593,447	21	2,885,044
2015	119,677	5	142,167	5	1,800,466	68	579,745	22	2,642,055
2016	98,516	4	149,364	6	1,796,976	67	640,220	24	2,685,076
2017	124,002	5	129,108	5	1,638,309	64	681,683	26	2,573,102
2018	108,974	4	145,402	5	1,795,048	66	666,971	25	2,716,395

Table 2. Catches of target tunas in the WCPFC Statistical Area, by gear type

YEAR	LONGLINE		POLE-AND-LINE		PURSE SEINE		TROLL		OTHER		TOTAL
	TONNES	%	TONNES	%	TONNES	%	TONNES	%	TONNES	%	
1960	129,874	54	73,800	31	5,224	2	0	0	31,195	13	240,093
1961	123,330	41	132,070	43	14,540	5	0	0	34,536	11	304,476
1962	128,804	38	157,412	46	18,875	6	0	0	34,947	10	340,038
1963	122,263	45	98,628	37	11,934	4	0	0	36,795	14	269,620
1964	102,481	32	143,323	45	29,012	9	0	0	41,334	13	316,150
1965	103,955	36	134,621	47	8,621	3	0	0	41,727	14	288,924
1966	145,278	34	218,900	51	16,913	4	0	0	46,993	11	428,084
1967	128,047	35	174,774	47	14,508	4	5	0	52,006	14	369,340
1968	120,136	32	183,954	50	15,143	4	14	0	52,327	14	371,574
1969	122,806	31	207,073	52	9,483	2	0	0	57,703	15	397,065
1970	141,360	31	228,553	50	16,222	4	50	0	69,633	15	455,818
1971	143,625	30	240,575	50	24,511	5	0	0	68,925	14	477,636
1972	161,533	31	242,745	47	29,031	6	268	0	87,209	17	520,786
1973	166,399	26	330,841	52	36,269	6	484	0	103,281	16	637,274
1974	145,192	22	370,499	57	29,548	5	898	0	109,578	17	655,715
1975	164,049	28	279,663	48	27,685	5	646	0	111,669	19	583,712
1976	198,013	27	382,627	53	40,770	6	25	0	104,582	14	726,017
1977	218,413	29	345,257	46	53,491	7	621	0	136,322	18	754,104
1978	212,059	26	407,482	51	52,040	6	1,686	0	131,084	16	804,351
1979	211,221	27	344,799	45	90,102	12	814	0	124,684	16	771,620
1980	230,625	28	398,498	48	116,756	14	1,489	0	89,969	11	837,337
1981	191,732	24	348,917	43	158,559	20	2,118	0	107,884	13	809,210
1982	179,575	21	316,457	37	255,489	30	2,552	0	107,990	13	862,063
1983	175,498	16	342,287	32	442,152	41	949	0	109,378	10	1,070,264
1984	162,111	14	415,016	36	462,278	40	3,124	0	118,478	10	1,161,007
1985	177,722	18	287,892	28	409,535	40	3,468	0	136,812	13	1,015,429
1986	169,129	15	360,864	31	474,837	41	2,284	0	146,873	13	1,153,987
1987	179,966	16	294,879	26	543,979	47	2,350	0	131,849	11	1,153,023
1988	200,774	16	327,997	25	608,995	47	4,671	0	151,193	12	1,293,630
1989	170,876	13	311,981	24	664,659	50	8,687	1	165,164	12	1,321,367
1990	188,842	13	247,104	17	795,527	55	7,219	1	203,508	14	1,442,200
1991	160,889	10	290,006	17	1,006,763	60	8,004	0	203,129	12	1,668,791
1992	199,688	12	259,762	16	975,740	61	6,844	0	163,536	10	1,605,570
1993	195,377	13	293,014	20	846,115	57	4,612	0	145,262	10	1,484,380
1994	221,367	14	262,721	16	971,566	60	7,493	0	162,850	10	1,625,997
1995	217,417	13	298,301	18	927,490	57	23,585	1	168,062	10	1,634,855
1996	215,466	13	301,279	18	896,444	55	17,807	1	208,032	13	1,639,028
1997	226,375	13	298,666	18	959,215	57	18,732	1	178,199	11	1,681,187
1998	251,197	12	323,645	16	1,257,392	61	19,099	1	213,779	10	2,065,112
1999	219,024	12	338,480	18	1,068,961	58	13,476	1	211,900	11	1,851,841
2000	247,904	13	319,854	16	1,143,294	58	25,845	1	235,670	12	1,972,567
2001	264,291	14	272,483	14	1,118,920	59	17,329	1	211,934	11	1,884,957
2002	281,369	14	286,202	14	1,265,453	61	16,129	1	215,317	10	2,064,470
2003	261,346	13	303,905	15	1,258,225	61	19,875	1	223,218	11	2,066,569
2004	284,782	13	322,179	14	1,354,240	60	23,445	1	260,314	12	2,244,960
2005	250,167	11	266,735	12	1,479,329	67	13,293	1	195,972	9	2,205,496
2006	255,328	11	257,594	11	1,512,945	67	10,098	0	212,599	9	2,248,564
2007	245,129	10	284,661	12	1,655,499	68	9,249	0	244,044	10	2,438,582
2008	247,389	10	269,551	11	1,709,352	69	11,740	0	252,565	10	2,490,597
2009	280,197	11	264,350	10	1,785,791	68	9,898	0	277,286	11	2,617,522
2010	274,105	11	270,123	11	1,703,131	68	11,320	0	260,010	10	2,518,689
2011	261,423	11	275,070	12	1,550,491	66	11,973	1	239,331	10	2,338,288
2012	274,476	10	242,960	9	1,844,077	69	14,018	1	298,991	11	2,674,522
2013	242,065	9	229,560	9	1,897,360	70	9,484	0	313,059	12	2,691,528
2014	264,636	9	206,939	7	2,059,008	71	6,677	0	347,784	12	2,885,044
2015	270,897	10	214,144	8	1,752,754	66	7,552	0	396,708	15	2,642,055
2016	234,853	9	198,281	7	1,832,990	68	7,206	0	411,746	15	2,685,076
2017	244,007	9	168,427	7	1,823,008	71	7,951	0	329,709	13	2,573,102
2018	254,850	9	170,038	6	1,910,725	70	8,474	0	372,308	14	2,716,395

Table 3. LONGLINE catches in the WCPFC Statistical Area, by species

YEAR	ALBACORE		BIGEYE		SKIPJACK		YELLOWFIN		TOTAL
	TONNES	%	TONNES	%	TONNES	%	TONNES	%	
1960	31,387	24	43,467	33	0	0	55,020	42	129,874
1961	32,647	26	37,517	30	0	0	53,166	43	123,330
1962	37,358	29	35,895	28	4	0	55,547	43	128,804
1963	26,538	22	42,540	35	0	0	53,185	44	122,263
1964	26,240	26	30,989	30	5	0	45,247	44	102,481
1965	28,603	28	29,848	29	11	0	45,493	44	103,955
1966	51,588	36	31,984	22	52	0	61,654	42	145,278
1967	58,208	45	33,632	26	124	0	36,083	28	128,047
1968	46,226	38	27,757	23	83	0	46,070	38	120,136
1969	38,478	31	32,571	27	130	0	51,627	42	122,806
1970	48,981	35	34,965	25	1,608	1	55,806	39	141,360
1971	46,025	32	38,359	27	1,475	1	57,766	40	143,625
1972	47,774	30	51,040	32	1,544	1	61,175	38	161,533
1973	59,835	36	42,412	25	1,861	1	62,291	37	166,399
1974	39,299	27	45,653	31	2,124	1	58,116	40	145,192
1975	31,180	19	61,488	37	1,919	1	69,462	42	164,049
1976	45,022	23	73,325	37	2,096	1	77,570	39	198,013
1977	48,789	22	72,083	33	3,127	1	94,414	43	218,413
1978	42,260	20	56,364	27	3,233	2	110,202	52	212,059
1979	36,295	17	63,837	30	2,179	1	108,910	52	211,221
1980	42,343	18	62,537	27	632	0	125,113	54	230,625
1981	47,272	25	46,590	24	756	0	97,114	51	191,732
1982	43,876	24	48,578	27	972	1	86,149	48	179,575
1983	36,784	21	46,311	26	2,144	1	90,259	51	175,498
1984	31,277	19	52,976	33	870	1	76,988	47	162,111
1985	38,012	21	58,629	33	1,108	1	79,973	45	177,722
1986	41,702	25	56,989	34	1,439	1	68,999	41	169,129
1987	33,398	19	68,832	38	2,329	1	75,407	42	179,966
1988	41,694	21	68,288	34	1,937	1	88,855	44	200,774
1989	30,147	18	64,916	38	2,507	1	73,306	43	170,876
1990	32,170	17	77,009	41	363	0	79,300	42	188,842
1991	35,459	22	61,033	38	885	1	63,512	39	160,889
1992	45,551	23	75,966	38	432	0	77,739	39	199,688
1993	56,183	29	66,566	34	573	0	72,055	37	195,377
1994	59,629	27	79,175	36	379	0	82,184	37	221,367
1995	60,388	28	68,125	31	598	0	88,306	41	217,417
1996	61,590	29	58,054	27	3,935	2	91,887	43	215,466
1997	72,643	32	68,597	30	4,070	2	81,065	36	226,375
1998	80,042	32	85,048	34	5,030	2	81,077	32	251,197
1999	68,834	31	74,959	34	4,208	2	71,023	32	219,024
2000	69,582	28	76,912	31	4,559	2	96,851	39	247,904
2001	85,022	32	78,670	30	5,059	2	95,540	36	264,291
2002	89,894	32	92,381	33	3,450	1	95,644	34	281,369
2003	78,794	30	83,016	32	3,824	1	95,712	37	261,346
2004	76,967	27	99,705	35	4,051	1	104,059	37	284,782
2005	83,069	33	78,597	31	1,084	0	87,417	35	250,167
2006	85,246	33	83,560	33	1,528	1	84,994	33	255,328
2007	80,170	33	81,350	33	1,175	0	82,434	34	245,129
2008	79,039	32	83,365	34	803	0	84,182	34	247,389
2009	99,128	35	80,492	29	1,220	0	99,357	35	280,197
2010	101,820	37	72,721	27	1,192	0	98,372	36	274,105
2011	85,287	33	77,566	30	1,124	0	97,446	37	261,423
2012	100,835	37	83,971	31	2,004	1	87,666	32	274,476
2013	97,970	40	65,637	27	1,254	1	77,204	32	242,065
2014	87,047	33	75,335	28	1,879	1	100,375	38	264,636
2015	93,682	35	71,621	26	1,841	1	103,753	38	270,897
2016	77,377	33	62,714	27	5,514	2	89,248	38	234,853
2017	98,561	40	58,066	24	2,550	1	84,830	35	244,007
2018	84,930	33	71,305	28	4,106	2	94,509	37	254,850

Table 4. POLE-AND-LINE catches in the WCPFC Statistical Area, by species

YEAR	ALBACORE		BIGEYE		SKIPJACK		YELLOWFIN		TOTAL
	TONNES	%	TONNES	%	TONNES	%	TONNES	%	
1960	0	0	1,500	2	70,428	95	1,872	3	73,800
1961	0	0	1,800	1	127,011	96	3,259	2	132,070
1962	0	0	800	1	152,387	97	4,225	3	157,412
1963	0	0	1,800	2	94,757	96	2,071	2	98,628
1964	0	0	1,143	1	137,106	96	5,074	4	143,323
1965	0	0	1,254	1	129,933	97	3,434	3	134,621
1966	0	0	1,108	1	215,600	98	2,192	1	218,900
1967	0	0	2,803	2	168,846	97	3,125	2	174,774
1968	16,597	9	2,272	1	162,379	88	2,706	1	183,954
1969	32,148	16	1,675	1	168,084	81	5,166	2	207,073
1970	24,485	11	1,589	1	197,873	87	4,606	2	228,553
1971	53,451	22	931	0	180,945	75	5,248	2	240,575
1972	60,691	25	1,762	1	172,827	71	7,465	3	242,745
1973	68,908	21	1,258	0	253,217	77	7,458	2	330,841
1974	73,676	20	1,039	0	289,202	78	6,582	2	370,499
1975	52,257	19	1,334	0	218,271	78	7,801	3	279,663
1976	85,436	22	3,423	1	276,582	72	17,186	4	382,627
1977	32,034	9	3,325	1	294,641	85	15,257	4	345,257
1978	59,977	15	3,337	1	331,401	81	12,767	3	407,482
1979	44,762	13	2,540	1	285,859	83	11,638	3	344,799
1980	46,843	12	2,916	1	333,597	84	15,142	4	398,498
1981	27,426	8	3,382	1	296,065	85	22,044	6	348,917
1982	29,615	9	4,993	2	264,726	84	17,123	5	316,457
1983	21,098	6	5,077	1	298,928	87	17,184	5	342,287
1984	26,015	6	4,557	1	366,811	88	17,633	4	415,016
1985	20,714	7	5,529	2	238,932	83	22,717	8	287,892
1986	16,096	4	4,133	1	322,665	89	17,970	5	360,864
1987	19,091	6	4,602	2	252,142	86	19,044	6	294,879
1988	6,216	2	5,890	2	295,325	90	20,566	6	327,997
1989	8,629	3	6,131	2	275,088	88	22,133	7	311,981
1990	8,777	4	5,985	2	211,573	86	20,769	8	247,104
1991	7,117	2	3,929	1	259,778	90	19,182	7	290,006
1992	13,899	5	4,055	2	218,765	84	23,043	9	259,762
1993	12,871	4	4,505	2	255,152	87	20,486	7	293,014
1994	26,456	10	5,251	2	209,636	80	21,378	8	262,721
1995	21,120	7	6,228	2	247,744	83	23,209	8	298,301
1996	20,302	7	7,940	3	242,486	80	30,551	10	301,279
1997	32,259	11	6,563	2	236,999	79	22,845	8	298,666
1998	22,962	7	6,405	2	266,772	82	27,506	8	323,645
1999	50,507	15	5,856	2	255,330	75	26,787	8	338,480
2000	21,652	7	6,838	2	264,407	83	26,957	8	319,854
2001	29,467	11	5,905	2	212,668	78	24,443	9	272,483
2002	48,472	17	6,109	2	207,488	72	24,133	8	286,202
2003	36,126	12	5,296	2	238,179	78	24,304	8	303,905
2004	32,365	10	9,238	3	249,936	78	30,640	10	322,179
2005	16,162	6	6,851	3	216,715	81	27,007	10	266,735
2006	15,429	6	9,781	4	208,731	81	23,653	9	257,594
2007	37,785	13	7,296	3	213,010	75	26,570	9	284,661
2008	19,072	7	9,204	3	218,570	81	22,705	8	269,551
2009	31,193	12	7,916	3	201,323	76	23,918	9	264,350
2010	19,575	7	7,027	3	223,409	83	20,112	7	270,123
2011	25,734	9	5,655	2	206,843	75	36,838	13	275,070
2012	33,783	14	3,934	2	170,538	70	34,705	14	242,960
2013	33,602	15	5,009	2	169,025	74	21,924	10	229,560
2014	29,459	14	4,714	2	148,684	72	24,082	12	206,939
2015	21,320	10	5,687	3	151,344	71	35,793	17	214,144
2016	14,468	7	3,932	2	156,533	79	23,348	12	198,281
2017	20,919	12	1,628	1	133,509	79	12,371	7	168,427
2018	17,626	10	1,677	1	138,534	81	12,201	7	170,038

Table 5. PURSE SEINE catch estimates in the WCPFC Statistical Area, by species.
(original catches have been adjusted with species compositions determined from observer grab samples corrected for size selectivity bias)

YEAR	ALBACORE		BIGEYE		SKIPJACK		YELLOWFIN		TOTAL
	TONNES	%	TONNES	%	TONNES	%	TONNES	%	
1960	0	0	58	1	3,728	71	1,438	28	5,224
1961	7	0	63	0	11,693	80	2,777	19	14,540
1962	53	0	173	1	11,674	62	6,975	37	18,875
1963	59	0	6	0	9,592	80	2,277	19	11,934
1964	128	0	231	1	25,006	86	3,647	13	29,012
1965	11	0	201	2	4,657	54	3,752	44	8,621
1966	111	1	9	0	10,949	65	5,844	35	16,913
1967	89	1	61	0	10,937	75	3,421	24	14,508
1968	267	2	193	1	7,636	50	7,047	47	15,143
1969	521	5	50	1	5,043	53	3,869	41	9,483
1970	317	2	572	4	7,519	46	7,814	48	16,222
1971	902	4	687	3	13,703	56	9,219	38	24,511
1972	277	1	650	2	18,065	62	10,039	35	29,031
1973	1,353	4	735	2	19,205	53	14,976	41	36,269
1974	161	1	1,086	4	11,012	37	17,289	59	29,548
1975	159	1	1,246	5	13,499	49	12,781	46	27,685
1976	1,109	3	1,628	4	22,839	56	15,194	37	40,770
1977	669	1	1,931	4	35,025	65	15,866	30	53,491
1978	1,115	2	2,145	4	34,665	67	14,115	27	52,040
1979	125	0	1,862	2	59,998	67	28,117	31	90,102
1980	329	0	2,630	2	79,970	68	33,827	29	116,756
1981	252	0	9,447	6	96,840	61	52,020	33	158,559
1982	561	0	14,835	6	165,872	65	74,221	29	255,489
1983	350	0	21,193	5	300,970	68	119,639	27	442,152
1984	3,380	1	22,414	5	315,007	68	121,477	26	462,278
1985	1,533	0	17,665	4	276,678	68	113,659	28	409,535
1986	1,542	0	25,541	5	340,989	72	106,765	22	474,837
1987	1,205	0	30,325	6	360,133	66	152,316	28	543,979
1988	1,208	0	28,038	5	456,964	75	122,785	20	608,995
1989	2,521	0	30,138	5	451,437	68	180,563	27	664,659
1990	1,995	0	35,288	4	550,377	69	207,867	26	795,527
1991	2,652	0	37,204	4	725,013	72	241,894	24	1,006,763
1992	4,104	0	45,062	5	661,305	68	265,269	27	975,740
1993	2,889	0	35,211	4	592,839	70	215,176	25	846,115
1994	2,026	0	36,098	4	703,256	72	230,186	24	971,566
1995	1,177	0	27,184	3	681,905	74	217,224	23	927,490
1996	581	0	44,494	5	659,808	74	191,561	21	896,444
1997	1,068	0	82,649	9	569,967	59	305,531	32	959,215
1998	1,554	0	76,283	6	789,487	63	390,068	31	1,257,392
1999	6,872	1	68,004	6	680,365	64	313,720	29	1,068,961
2000	2,408	0	53,272	5	754,994	66	332,620	29	1,143,294
2001	974	0	55,728	5	750,332	67	311,886	28	1,118,920
2002	3,303	0	60,424	5	937,991	74	263,735	21	1,265,453
2003	627	0	43,668	3	897,656	71	316,274	25	1,258,225
2004	7,200	1	72,507	5	951,774	70	322,759	24	1,354,240
2005	850	0	60,707	4	1,049,714	71	368,058	25	1,479,329
2006	364	0	60,387	4	1,145,930	76	306,264	20	1,512,945
2007	5,682	0	50,255	3	1,270,729	77	328,833	20	1,655,499
2008	825	0	57,833	3	1,226,906	72	423,788	25	1,709,352
2009	2,077	0	59,188	3	1,408,514	79	316,012	18	1,785,791
2010	330	0	56,341	3	1,302,265	76	344,195	20	1,703,131
2011	480	0	72,132	5	1,174,327	76	303,552	20	1,550,491
2012	4,193	0	63,890	3	1,400,218	76	375,776	20	1,844,077
2013	1,988	0	72,201	4	1,481,038	78	342,133	18	1,897,360
2014	2,009	0	65,519	3	1,639,791	80	351,689	17	2,059,008
2015	1,072	0	49,877	3	1,400,995	80	300,810	17	1,752,754
2016	3,689	0	61,129	3	1,383,165	75	385,007	21	1,832,990
2017	1,261	0	58,273	3	1,283,298	70	480,176	26	1,823,008
2018	3,024	0	64,119	3	1,469,520	77	374,062	20	1,910,725

Table 6. Catches of target tunas in the WCPFC Statistical Area, by flag

YEAR	AUSTRALIA	BELIZE	CANADA	CHINA	COOK ISLANDS	ECUADOR	EL SALVADOR	FEDERATED STATES OF MICRONESIA
1960	-	-	-	-	-	-	-	-
1961	-	-	-	-	-	-	-	-
1962	-	-	-	-	-	-	-	-
1963	-	-	-	-	-	-	-	-
1964	-	-	-	-	-	-	-	-
1965	-	-	-	-	-	-	-	-
1966	-	-	-	-	-	-	-	-
1967	-	-	-	-	-	-	-	-
1968	-	-	-	-	-	-	-	-
1969	-	-	-	-	-	-	-	-
1970	100	-	-	-	-	-	-	-
1971	100	-	-	-	-	-	-	-
1972	100	-	-	-	-	-	-	-
1973	100	-	-	-	-	-	-	-
1974	100	-	-	-	-	-	-	-
1975	2,000	-	-	-	-	-	-	-
1976	147	-	-	-	-	-	-	-
1977	131	-	-	-	-	-	-	-
1978	375	-	-	-	-	-	-	-
1979	100	-	-	-	-	-	-	-
1980	117	-	-	-	-	-	-	-
1981	357	-	-	-	-	-	-	-
1982	238	-	-	-	-	-	-	-
1983	230	-	-	-	-	-	-	-
1984	147	-	-	-	-	-	-	-
1985	18	-	-	-	-	-	-	-
1986	101	-	-	-	-	-	-	-
1987	1,455	-	-	-	-	-	-	-
1988	1,752	-	235	44	-	-	-	-
1989	2,836	-	235	144	-	-	-	-
1990	6,983	-	235	453	-	-	-	-
1991	9,380	-	235	1,007	-	-	-	11,338
1992	9,524	-	235	2,715	-	-	-	15,472
1993	7,212	-	235	6,419	-	-	-	16,908
1994	5,415	-	235	12,677	32	-	-	20,941
1995	6,288	54	235	10,586	63	-	-	6,759
1996	5,249	129	136	6,026	59	-	-	7,394
1997	7,550	77	149	3,664	-	-	-	8,254
1998	5,153	276	167	3,272	22	-	-	14,179
1999	7,551	211	253	7,515	56	-	-	10,881
2000	6,997	270	351	6,244	335	3,992	-	21,688
2001	5,279	7,143	206	9,947	206	1,057	599	17,646
2002	5,232	3,385	144	15,632	770	427	1,488	20,607
2003	5,809	2,697	-	42,210	2,462	1,562	74	30,829
2004	4,200	943	63	42,606	3,207	3,051	-	28,471
2005	3,093	1,056	72	62,734	3,125	5,193	-	28,302
2006	5,030	632	135	77,382	2,841	9,523	-	10,774
2007	4,404	595	27	73,698	3,266	9,187	6,025	15,440
2008	3,969	225	-	86,451	2,817	25,415	10,962	19,424
2009	3,646	190	-	119,639	2,054	4,429	8,824	21,154
2010	2,566	127	-	83,240	3,058	8,451	7,371	24,130
2011	2,924	220	1	105,274	3,636	18,045	12,226	28,785
2012	2,538	194	-	91,302	5,382	23,145	11,411	38,983
2013	2,613	252	-	121,299	1,948	21,442	13,273	27,053
2014	2,936	-	-	89,368	2,032	17,216	17,480	42,710
2015	3,938	-	-	72,794	1,764	11,378	7,229	61,207
2016	3,759	-	-	41,194	1,820	3,925	3,001	77,144
2017	2,950	-	55	60,276	3,638	13,571	4,319	87,521
2018	2,417	-	-	53,846	2,257	22,446	4,015	118,712

Table 6 continued

YEAR	FIJI ISLANDS	FRENCH POLYNESIA	INDONESIA	JAPAN	KIRIBATI	REPUBLIC OF KOREA	MARSHALL ISLANDS	MEXICO
1960	—	—	7,415	206,606	—	744	—	—
1961	—	—	8,054	269,191	—	385	—	—
1962	—	—	8,749	302,176	—	708	—	—
1963	—	—	9,505	228,717	—	1,955	—	—
1964	—	—	10,327	270,506	—	2,527	—	—
1965	—	—	11,223	232,844	—	7,078	—	—
1966	—	—	12,198	355,838	—	13,405	—	—
1967	—	—	13,260	281,568	—	14,469	—	—
1968	—	—	14,417	273,603	—	10,794	—	—
1969	—	—	15,677	295,139	—	17,077	—	—
1970	—	—	17,600	324,251	—	16,927	—	—
1971	—	—	18,100	318,790	—	16,541	—	—
1972	—	—	28,600	341,855	—	17,678	—	—
1973	—	—	32,500	418,048	—	25,938	—	—
1974	12	—	33,779	429,014	—	14,105	—	—
1975	11	—	34,378	358,037	—	29,343	—	—
1976	742	—	33,375	474,987	—	44,464	—	—
1977	1,711	—	37,235	459,317	—	43,722	—	—
1978	2,524	—	40,024	513,391	—	33,102	—	—
1979	3,494	696	50,973	466,434	—	41,915	—	—
1980	2,496	936	58,282	522,843	1,812	46,096	—	—
1981	5,836	1,001	66,579	460,646	2,376	33,310	—	—
1982	4,428	1,034	72,359	501,943	2,269	39,684	—	—
1983	3,741	836	81,685	554,560	3,406	37,589	—	468
1984	4,572	1,250	91,802	639,034	3,843	33,293	—	6,600
1985	3,946	836	99,918	511,606	2,531	44,292	—	—
1986	3,125	961	104,027	590,884	3,226	63,034	—	—
1987	3,889	878	131,376	504,820	2,246	91,201	—	—
1988	3,891	715	152,704	599,082	3,284	113,653	—	—
1989	5,189	856	165,050	517,619	4,094	139,904	—	—
1990	3,830	2,109	174,573	471,098	2,407	204,399	—	—
1991	5,298	2,335	178,542	490,676	2,036	247,950	—	—
1992	4,790	2,019	205,268	472,794	2,363	213,553	9	—
1993	4,966	2,387	188,046	516,859	2,104	150,165	137	—
1994	5,937	2,804	208,582	473,787	3,131	226,531	48	—
1995	7,009	3,343	222,269	481,106	5,423	206,176	22	—
1996	6,803	3,583	344,955	417,585	6,645	174,948	—	—
1997	4,354	4,564	256,670	507,798	7,021	188,667	—	—
1998	4,013	5,710	338,881	543,367	9,389	247,930	—	—
1999	4,075	5,200	321,618	482,046	9,793	173,490	—	—
2000	9,660	6,833	342,203	498,958	14,725	207,498	7,560	—
2001	11,309	7,733	314,888	439,331	5,401	216,691	35,774	—
2002	11,551	7,347	302,659	451,896	9,830	254,593	38,952	—
2003	10,854	6,309	308,731	469,809	6,898	221,079	37,875	—
2004	17,312	5,496	406,483	441,599	6,661	212,655	46,676	—
2005	15,477	5,089	247,514	481,851	9,165	237,353	56,164	—
2006	15,472	5,938	285,844	445,977	6,723	274,859	42,349	—
2007	10,042	6,408	321,890	472,400	18,020	278,482	59,409	—
2008	13,627	5,673	334,585	434,689	18,373	275,132	33,013	—
2009	16,828	6,878	388,635	400,816	34,004	310,139	43,973	—
2010	12,545	6,250	358,254	431,352	38,947	300,213	57,225	—
2011	16,307	6,028	397,442	369,727	59,611	231,571	90,544	—
2012	14,978	7,273	443,316	397,608	74,108	290,293	72,422	—
2013	12,782	6,695	526,236	378,875	77,782	245,372	77,768	—
2014	13,663	7,175	482,917	355,845	114,156	292,011	75,896	—
2015	13,085	7,317	432,078	334,108	142,623	289,434	86,869	—
2016	14,256	6,943	525,633	305,356	169,593	299,174	61,786	—
2017	17,145	6,279	466,269	301,924	157,890	265,540	67,010	—
2018	13,692	7,076	439,399	312,376	193,749	289,393	74,580	—

Table 6 continued

YEAR	NAURU	NEW CALEDONIA	NEW ZEALAND	NIUE	PALAU	PAPUA NEW GUINEA	PHILIPPINES	EU-PORTUGAL
1960	—	—	—	—	—	—	20,585	—
1961	—	—	—	—	—	—	21,735	—
1962	—	—	—	—	—	—	22,957	—
1963	—	—	—	—	—	—	24,252	—
1964	—	—	—	—	1,166	—	25,626	—
1965	—	—	—	—	2,670	—	27,084	—
1966	—	—	—	—	2,686	—	28,632	—
1967	—	—	5	—	3,406	—	30,275	—
1968	—	—	14	—	5,056	—	32,021	—
1969	—	—	—	—	4,762	—	33,875	—
1970	—	—	50	—	8,082	2,428	52,000	—
1971	—	—	—	—	2,143	16,974	57,200	—
1972	—	—	268	—	1,519	13,130	60,700	—
1973	—	—	484	—	2,350	28,216	70,900	—
1974	—	—	899	—	6,808	41,630	81,188	—
1975	—	—	647	—	6,269	17,369	84,450	—
1976	—	—	25	—	5,323	32,921	73,653	—
1977	—	—	621	—	4,012	24,115	118,149	—
1978	—	—	1,701	—	9,694	48,859	87,319	—
1979	—	—	830	—	5,688	26,857	94,308	—
1980	—	—	1,519	—	6,576	33,994	77,505	—
1981	—	229	2,111	—	9,411	31,412	94,616	—
1982	—	868	2,436	—	4,053	—	104,046	—
1983	—	461	6,565	—	—	—	118,529	—
1984	—	150	7,005	—	—	2,744	105,217	—
1985	—	281	5,713	—	97	9,300	137,308	—
1986	—	367	6,793	—	131	—	145,097	—
1987	—	1,102	5,035	—	161	—	141,461	—
1988	—	1,092	3,923	—	157	—	124,785	—
1989	—	871	10,323	—	77	—	151,124	—
1990	—	1,730	7,120	—	88	—	202,214	—
1991	—	1,536	7,765	—	—	—	221,817	—
1992	—	1,092	4,524	—	213	—	165,652	—
1993	—	1,294	4,415	—	206	8	134,921	—
1994	—	1,355	8,513	—	184	1,380	172,558	—
1995	—	1,274	8,147	—	100	12,701	198,613	—
1996	—	1,201	10,194	—	100	10,572	205,004	—
1997	—	977	10,451	—	107	19,399	208,767	—
1998	—	1,543	15,154	—	100	50,726	235,586	—
1999	—	1,616	10,141	—	100	38,981	226,320	—
2000	11	1,662	18,918	—	240	68,818	234,519	—
2001	13	1,718	17,533	—	62	92,807	210,786	—
2002	7	1,926	38,574	—	4	124,705	226,863	—
2003	20	2,007	30,614	—	20	159,621	264,106	—
2004	3	2,189	33,886	6	35	225,441	271,760	—
2005	—	2,114	27,917	105	—	235,439	274,247	—
2006	—	1,807	27,410	286	—	233,170	291,564	—
2007	—	1,770	38,969	306	—	230,014	320,567	—
2008	3	1,993	33,878	435	—	205,682	360,187	—
2009	8	2,187	30,618	189	—	213,018	328,047	—
2010	4	2,488	26,949	110	—	208,253	285,594	—
2011	11	2,362	25,312	—	—	164,557	193,915	7
2012	11	2,337	21,661	—	—	240,055	233,386	18
2013	19	2,314	27,687	—	—	194,301	229,394	175
2014	19	2,429	22,907	—	—	236,823	287,190	94
2015	19	2,504	9,424	—	—	215,764	247,959	21
2016	19	2,330	7,703	—	—	288,982	214,803	16
2017	19	2,382	10,316	—	2,507	304,478	200,065	—
2018	8,863	2,280	9,500	—	2,942	328,712	153,016	—

Table 6 continued

YEAR	RUSSIA	SAMOA	SENEGAL	SOLOMON ISLANDS	EU-SPAIN	CHINESE TAIPEI	TONGA
1960	-	-	-	-	-	4,035	-
1961	-	-	-	-	-	4,485	-
1962	-	-	-	-	-	4,779	-
1963	-	-	-	-	-	4,642	-
1964	-	-	-	-	-	5,482	-
1965	-	-	-	-	-	7,524	-
1966	-	-	-	-	-	14,812	-
1967	-	-	-	-	-	25,911	-
1968	-	-	-	-	-	35,302	-
1969	-	-	-	-	-	30,096	-
1970	-	-	-	-	-	33,887	-
1971	-	-	-	4,711	-	42,640	-
1972	-	-	-	7,905	-	48,612	-
1973	-	-	-	6,624	-	51,807	-
1974	-	-	-	10,332	-	37,501	-
1975	-	-	-	7,094	-	43,804	-
1976	-	-	-	15,763	-	43,546	-
1977	-	-	-	12,202	-	50,858	-
1978	-	-	-	18,353	-	46,606	-
1979	-	-	-	24,289	-	43,450	-
1980	-	-	-	23,241	-	48,323	-
1981	-	-	-	22,832	-	37,900	-
1982	-	-	-	20,071	-	32,644	205
1983	-	-	-	33,432	-	44,457	208
1984	-	-	-	35,616	-	56,407	218
1985	2,111	-	-	29,996	-	55,987	233
1986	4,175	-	-	42,249	-	65,658	252
1987	8,995	-	-	29,438	-	84,558	299
1988	6,189	-	-	40,513	-	117,865	276
1989	4,935	-	-	34,262	-	135,125	235
1990	2,126	-	-	26,612	-	164,640	192
1991	3,715	-	-	46,888	-	213,007	197
1992	2,126	-	-	30,559	-	263,185	225
1993	8,714	300	-	28,006	-	207,231	329
1994	6,722	736	-	33,925	-	223,590	411
1995	-	2,151	-	49,665	-	228,798	461
1996	-	2,375	-	38,697	-	226,436	579
1997	-	5,498	-	47,442	-	217,026	663
1998	-	6,820	-	48,378	1,624	305,354	833
1999	-	5,790	-	45,662	8,613	251,034	1,084
2000	-	5,389	-	12,930	12,896	279,197	1,161
2001	-	5,864	-	17,218	2,402	285,281	1,733
2002	-	4,927	-	18,537	2,288	318,298	1,672
2003	-	2,944	-	26,364	4,659	258,537	971
2004	-	1,967	-	24,904	5,587	260,645	388
2005	-	1,626	6	20,023	3,453	244,345	629
2006	-	2,564	15	29,462	11,825	255,610	759
2007	-	3,559	6	21,244	23,749	276,957	861
2008	-	2,796	-	17,378	36,358	247,220	592
2009	-	3,422	-	17,883	26,688	242,295	271
2010	-	3,090	-	26,907	29,500	253,135	128
2011	-	1,932	-	28,233	39,468	229,095	224
2012	-	2,353	-	28,635	32,199	247,238	171
2013	-	2,022	-	26,435	45,038	260,446	147
2014	-	1,102	-	62,034	40,538	275,356	250
2015	-	1,160	-	61,679	33,272	234,863	357
2016	-	1,266	-	56,325	8,591	234,768	397
2017	-	3,230	-	46,298	11,562	223,146	435
2018	-	2,077	-	60,260	10,376	240,663	237

Table 6 continued

YEAR	TOKELAU	TUVALU	UNITED STATES OF AMERICA	VANUATU	VIETNAM	WALLIS ET FUTUNA	EASTERN PACIFIC NEI	TOTAL
1960	–	–	708	–	–	–	–	240,093
1961	–	–	626	–	–	–	–	304,476
1962	–	–	669	–	–	–	–	340,038
1963	–	–	549	–	–	–	–	269,620
1964	–	–	516	–	–	–	–	316,150
1965	–	–	501	–	–	–	–	288,924
1966	–	–	513	–	–	–	–	428,084
1967	–	–	446	–	–	–	–	369,340
1968	–	–	367	–	–	–	–	371,574
1969	–	–	439	–	–	–	–	397,065
1970	–	–	493	–	–	–	–	455,818
1971	–	–	437	–	–	–	–	477,636
1972	–	–	419	–	–	–	–	520,786
1973	–	–	307	–	–	–	–	637,274
1974	–	–	347	–	–	–	–	655,715
1975	–	–	310	–	–	–	–	583,712
1976	–	–	1,071	–	–	–	–	726,017
1977	–	–	1,359	–	–	–	672	754,104
1978	–	–	1,477	–	–	–	926	804,351
1979	–	–	11,852	–	–	–	734	771,620
1980	–	–	13,483	–	–	–	114	837,337
1981	–	–	40,496	–	–	–	98	809,210
1982	–	216	75,494	–	–	–	75	862,063
1983	–	337	181,593	–	–	–	2,167	1,070,264
1984	–	540	162,381	–	–	–	10,188	1,161,007
1985	–	4	110,031	–	–	–	1,221	1,015,429
1986	–	390	123,517	–	–	–	–	1,153,987
1987	–	632	145,072	–	–	–	405	1,153,023
1988	–	1,090	122,380	–	–	–	–	1,293,630
1989	–	149	148,339	–	–	–	–	1,321,367
1990	–	90	171,301	–	–	–	–	1,442,200
1991	–	29	225,040	–	–	–	–	1,668,791
1992	–	8	209,244	–	–	–	–	1,605,570
1993	–	–	203,518	–	–	–	–	1,484,380
1994	–	–	215,683	820	–	–	–	1,625,997
1995	–	–	176,125	7,276	–	–	211	1,634,855
1996	–	–	158,219	11,497	–	–	642	1,639,028
1997	–	–	154,149	26,164	–	–	1,776	1,681,187
1998	–	–	184,278	39,423	–	–	2,934	2,065,112
1999	–	–	191,739	46,162	–	–	1,910	1,851,841
2000	–	–	135,410	37,545	33,632	–	2,925	1,972,567
2001	–	–	128,503	11,917	35,400	–	510	1,884,957
2002	8	–	136,190	28,031	37,683	–	244	2,064,470
2003	3	–	101,004	28,443	37,458	–	2,600	2,066,569
2004	3	–	79,395	66,793	50,521	–	2,014	2,244,960
2005	6	19	97,870	88,391	52,409	–	709	2,205,496
2006	6	12	81,165	76,148	52,573	–	709	2,248,564
2007	8	26	103,576	82,758	54,210	–	709	2,438,582
2008	8	22	221,186	47,892	49,903	–	709	2,490,597
2009	12	4,456	292,702	49,567	44,241	–	709	2,617,522
2010	4	10,582	256,977	38,865	41,665	–	709	2,518,689
2011	4	10,806	214,923	34,792	49,584	13	709	2,338,288
2012	229	16,469	272,718	37,824	65,556	–	709	2,674,522
2013	177	11,896	265,120	34,327	78,631	9	–	2,691,528
2014	86	6,355	323,264	32,343	80,842	7	–	2,885,044
2015	179	5,129	249,172	27,660	89,063	6	–	2,642,055
2016	179	6,677	212,674	13,680	123,076	6	–	2,685,076
2017	67	6,448	176,628	18,504	112,626	4	–	2,573,102
2018	55	11,695	207,220	24,002	120,535	4	–	2,716,395

Table 7. Catches of albacore in the Pacific Ocean. "OTHER" includes purse seine catches.

YEAR	SOUTH PACIFIC OCEAN					NORTH PACIFIC OCEAN					TOTAL
	LONGLINE	POLE-AND-LINE	TROLL	OTHER	SUBTOTAL	LONGLINE	POLE-AND-LINE	TROLL	OTHER	SUBTOTAL	
1960	22,248	45	0	0	22,293	17,384	25,156	20,105	769	63,414	85,707
1961	23,742	0	0	0	23,742	17,490	21,476	12,059	1,631	52,656	76,398
1962	35,219	0	0	0	35,219	15,850	9,814	19,753	1,926	47,343	82,562
1963	31,095	16	0	0	31,111	13,639	28,852	25,145	1,438	69,074	100,185
1964	22,824	0	0	0	22,824	15,659	27,269	18,391	1,271	62,590	85,414
1965	25,455	0	0	0	25,455	14,226	41,908	16,557	863	73,554	99,009
1966	38,661	0	0	0	38,661	25,600	24,430	15,377	1,285	66,692	105,353
1967	43,952	0	5	0	43,957	29,821	34,594	17,975	1,316	83,706	127,663
1968	32,368	0	14	0	32,382	25,152	21,503	21,462	2,327	70,444	102,826
1969	24,805	0	0	0	24,805	19,223	34,908	20,192	1,838	76,161	100,966
1970	34,775	100	50	0	34,925	19,229	28,679	21,422	1,656	70,986	105,911
1971	38,530	100	0	0	38,630	14,982	55,028	22,272	2,436	94,718	133,348
1972	39,131	122	268	0	39,521	19,025	64,319	27,521	1,659	112,524	152,045
1973	46,705	141	484	0	47,330	17,030	71,003	17,053	2,006	107,092	154,422
1974	33,039	112	898	0	34,049	14,047	78,341	21,509	1,384	115,281	149,330
1975	22,849	105	646	0	23,600	14,547	55,395	19,043	1,219	90,204	113,804
1976	28,957	100	25	0	29,082	18,510	88,036	16,183	3,217	125,946	155,028
1977	38,019	100	621	0	38,740	17,684	33,431	10,022	2,264	63,401	102,141
1978	32,890	100	1,686	0	34,676	13,851	60,827	16,636	8,064	99,378	134,054
1979	26,162	100	814	0	27,076	14,738	44,965	7,302	4,211	71,216	98,292
1980	30,972	101	1,468	0	32,541	15,635	47,124	7,768	4,707	75,234	107,775
1981	32,694	0	2,085	5	34,784	18,864	28,174	12,837	11,526	71,401	106,185
1982	28,347	1	2,434	6	30,788	18,275	30,039	6,713	13,963	68,990	99,778
1983	24,309	0	744	39	25,092	16,586	21,705	9,584	7,676	55,551	80,643
1984	20,340	2	2,773	1,589	24,704	16,133	27,043	9,354	18,670	71,200	95,904
1985	27,138	0	3,253	1,937	32,328	14,781	22,212	6,471	14,947	58,411	90,739
1986	32,641	0	2,003	1,946	36,590	13,140	16,528	4,738	10,938	45,344	81,934
1987	21,979	9	2,134	930	25,052	15,411	19,240	2,870	11,509	49,030	74,082
1988	28,288	0	4,296	5,283	37,867	15,601	6,814	4,367	18,968	45,750	83,617
1989	18,738	0	8,370	21,968	49,076	14,536	8,683	2,000	19,986	45,205	94,281
1990	21,304	245	6,975	7,538	36,062	16,608	8,647	2,905	26,159	54,319	90,381
1991	26,292	14	7,805	1,489	35,600	18,049	7,103	1,984	10,798	37,934	73,534
1992	32,014	11	6,578	65	38,668	19,991	13,888	4,934	16,580	55,393	94,061
1993	30,998	74	4,296	70	35,438	31,143	12,797	6,748	4,112	54,800	90,238
1994	34,998	67	7,164	89	42,318	30,825	26,389	13,134	3,486	73,834	116,152
1995	30,508	139	7,716	104	38,467	32,948	21,061	10,758	1,725	66,492	104,959
1996	26,763	30	7,410	156	34,359	39,383	20,296	21,849	1,070	82,598	116,957
1997	34,657	21	4,679	133	39,490	48,365	32,311	18,674	2,736	102,086	141,576
1998	43,970	36	6,280	85	50,371	48,050	23,005	20,074	3,237	94,366	144,737
1999	35,955	138	3,447	74	39,614	46,767	50,429	13,853	11,155	122,204	161,818
2000	40,642	102	6,455	139	47,338	41,615	21,619	15,245	4,985	83,464	130,802
2001	52,855	37	5,253	199	58,344	37,744	29,569	16,738	3,002	87,053	145,397
2002	68,411	18	4,661	150	73,240	33,911	48,832	16,323	6,219	105,285	178,525
2003	56,351	12	5,984	130	62,477	33,293	36,173	21,886	3,184	94,536	157,013
2004	57,024	110	4,614	123	61,871	30,175	32,380	22,255	8,977	93,787	155,658
2005	59,897	29	3,503	137	63,566	33,028	16,199	14,067	3,183	66,477	130,043
2006	59,343	29	2,884	188	62,444	34,270	15,423	18,931	1,137	69,761	132,205
2007	56,500	17	2,014	60	58,591	31,771	37,789	18,646	6,438	94,644	153,235
2008	59,066	12	3,502	160	62,740	28,369	19,060	17,901	2,925	68,255	130,995
2009	80,638	21	2,031	211	82,901	28,802	33,390	19,167	2,755	84,114	167,015
2010	84,949	14	2,139	190	87,292	28,379	19,561	19,749	888	68,577	155,869
2011	62,494	30	3,189	233	65,946	35,398	26,704	16,895	1,077	80,074	146,020
2012	84,896	41	2,962	248	88,147	35,969	33,742	17,256	4,797	91,764	179,911
2013	81,523	26	3,226	248	85,023	31,624	33,568	17,709	3,248	86,149	171,172
2014	79,542	26	2,403	248	82,219	29,490	29,433	18,347	3,338	80,608	162,827
2015	79,223	26	2,581	248	82,078	33,284	21,294	16,188	2,389	73,155	155,233
2016	65,749	33	2,114	367	68,263	25,129	14,435	13,676	3,568	56,808	125,071
2017	90,627	28	2,423	212	93,290	28,029	20,891	9,101	1,973	59,994	153,284
2018	65,410	26	2,731	287	68,454	25,043	17,600	10,554	3,220	56,417	124,871

Table 8. Catches of bigeye in the Pacific Ocean.

YEAR	WESTERN AND CENTRAL PACIFIC OCEAN					EASTERN PACIFIC OCEAN					TOTAL
	LONGLINE	POLE-AND-LINE	PURSE SEINE	OTHER	SUBTOTAL	LONGLINE	POLE-AND-LINE	PURSE SEINE	OTHER	SUBTOTAL	
1960	43,467	1,500	58	0	45,025	17,722	0	24	0	17,746	62,771
1961	37,517	1,800	63	0	39,380	52,431	106	105	0	52,642	92,022
1962	35,895	800	173	0	36,868	45,050	318	302	0	45,670	82,538
1963	42,540	1,800	6	0	44,346	66,617	140	0	0	66,757	111,103
1964	30,978	1,143	231	28	32,380	46,279	127	0	0	46,406	78,786
1965	29,844	1,254	201	30	31,329	29,164	231	0	0	29,395	60,724
1966	31,949	1,108	9	86	33,152	34,800	292	210	0	35,302	68,454
1967	32,791	2,803	61	253	35,908	35,878	1,305	1,697	0	38,880	74,788
1968	27,199	2,272	193	204	29,868	35,233	115	4,618	0	39,966	69,834
1969	32,371	1,675	50	62	34,158	52,071	0	1,093	0	53,164	87,322
1970	34,348	1,589	738	2,802	39,477	33,341	0	2,411	0	35,752	75,229
1971	36,798	931	873	3,057	41,659	29,804	75	4,359	18	34,256	75,915
1972	49,334	1,762	843	3,497	55,436	36,128	126	3,971	0	40,225	95,661
1973	40,285	1,258	966	4,218	46,727	50,777	236	3,342	0	54,355	101,082
1974	41,787	1,039	1,354	4,719	48,899	36,961	0	1,554	0	38,515	87,414
1975	57,623	1,334	1,520	4,938	65,415	41,733	36	6,574	0	48,343	113,758
1976	68,514	3,423	1,859	4,123	77,919	54,290	75	17,212	7	71,584	149,503
1977	66,249	3,325	2,258	5,627	77,459	74,086	2	11,161	0	85,249	162,708
1978	50,502	3,337	2,245	4,231	60,315	70,659	0	18,539	0	89,198	149,513
1979	57,319	2,540	2,213	4,615	66,687	55,435	0	12,097	1	67,533	134,220
1980	57,233	2,916	3,053	3,663	66,865	64,335	0	21,938	130	86,403	153,268
1981	42,331	3,382	9,827	4,244	59,784	53,416	0	14,921	7	68,344	128,128
1982	45,896	4,993	14,972	4,005	69,866	53,365	42	6,939	3	60,349	130,215
1983	42,453	5,077	21,526	4,371	73,427	60,043	39	4,575	37	64,694	138,121
1984	47,516	4,557	22,836	4,625	79,534	46,394	2	8,861	11	55,268	134,802
1985	52,454	5,529	18,280	5,560	81,823	66,325	2	6,056	15	72,398	154,221
1986	47,926	4,133	26,031	5,856	83,946	102,425	0	2,686	74	105,185	189,131
1987	60,147	4,602	30,614	5,263	100,626	100,121	0	1,177	49	101,347	201,973
1988	50,701	5,890	28,437	6,404	91,432	72,758	5	1,535	15	74,313	165,745
1989	54,773	6,131	30,573	7,012	98,489	70,963	0	2,030	1	72,994	171,483
1990	66,976	5,985	35,701	7,708	116,370	98,871	0	5,921	59	104,851	221,221
1991	48,875	3,929	37,691	8,859	99,354	104,195	31	4,870	25	109,121	208,475
1992	64,018	4,055	45,331	5,931	119,335	84,808	0	7,179	13	92,000	211,335
1993	58,348	4,505	35,366	5,514	103,733	72,498	0	9,657	35	82,190	185,923
1994	68,326	5,251	36,259	7,661	117,497	71,360	0	34,899	806	107,065	224,562
1995	58,821	6,228	27,309	8,284	100,642	58,269	0	45,321	1,369	104,959	205,601
1996	49,936	7,940	44,620	10,228	112,724	46,958	0	61,311	748	109,017	221,741
1997	61,240	6,563	82,906	7,671	158,380	52,580	0	64,272	20	116,872	275,252
1998	76,424	6,405	76,108	9,190	168,127	46,375	0	44,129	628	91,132	259,259
1999	68,629	5,856	67,442	8,915	150,842	36,450	0	51,158	538	88,146	238,988
2000	65,952	6,838	54,469	9,942	137,201	47,605	0	94,640	253	142,498	279,699
2001	66,812	5,905	55,988	9,154	137,859	68,755	0	61,156	19	129,930	267,789
2002	82,471	6,109	60,024	9,549	158,153	74,424	0	57,440	12	131,876	290,029
2003	71,027	5,296	42,820	9,453	128,596	59,776	0	54,174	21	113,971	242,567
2004	87,961	9,238	72,391	10,803	180,393	43,483	0	67,592	194	111,269	291,662
2005	71,401	6,851	60,801	4,429	143,482	41,432	0	67,895	25	109,352	252,834
2006	78,426	9,781	60,060	4,307	152,574	33,802	0	83,837	40	117,679	270,253
2007	76,661	7,296	50,124	4,575	138,656	29,847	0	63,451	44	93,342	231,998
2008	77,151	9,204	58,414	4,290	149,059	26,136	0	75,028	28	101,192	250,251
2009	76,107	7,916	58,543	5,100	147,666	31,282	0	76,800	15	108,097	255,763
2010	64,349	7,027	57,025	4,106	132,507	35,227	0	57,753	1,804	94,784	227,291
2011	69,820	5,655	73,644	5,272	154,391	32,630	0	56,512	0	89,142	243,533
2012	75,150	3,932	64,183	12,437	155,702	36,166	0	66,020	8	102,194	257,896
2013	55,574	5,005	70,767	11,810	143,156	36,204	0	52,524	17	88,745	231,901
2014	69,264	4,712	66,192	14,808	154,976	37,387	0	54,495	17	91,899	246,875
2015	66,588	5,686	49,418	14,588	136,280	41,644	0	62,910	17	104,571	240,851
2016	58,034	3,931	61,239	21,205	144,409	35,535	0	56,713	22	92,270	236,679
2017	51,591	1,627	58,945	10,510	122,673	35,339	0	66,192	42	101,573	224,246
2018	65,131	1,675	64,233	8,123	139,162	35,339	0	66,192	42	101,573	240,735

Table 9. Catches of skipjack in the Pacific Ocean

YEAR	WESTERN AND CENTRAL PACIFIC OCEAN					EASTERN PACIFIC OCEAN					TOTAL
	LONGLINE	POLE-AND-LINE	PURSE SEINE	OTHER	SUBTOTAL	LONGLINE	POLE-AND-LINE	PURSE SEINE	OTHER	SUBTOTAL	
1960	0	70,428	3,728	15,782	89,938	0	28,929	16,649	481	46,059	135,997
1961	0	127,011	11,693	18,032	156,736	0	28,995	45,706	428	75,129	231,865
1962	4	152,387	11,674	17,559	181,624	0	17,660	58,939	503	77,102	258,726
1963	0	94,757	9,592	18,354	122,703	0	17,138	82,404	2,389	101,931	224,634
1964	5	137,106	25,006	20,801	182,918	0	10,306	51,759	3,609	65,674	248,592
1965	11	129,933	4,657	20,620	155,221	0	19,867	64,056	1,046	84,969	240,190
1966	50	215,600	10,949	22,913	249,512	0	14,083	50,264	1,960	66,307	315,819
1967	101	168,846	10,937	24,930	204,814	0	18,016	104,928	5,038	127,982	332,796
1968	60	162,379	7,636	24,929	195,004	0	7,340	59,642	10,128	77,110	272,114
1969	124	168,084	5,043	30,070	203,321	0	6,970	46,020	11,904	64,894	268,215
1970	1,260	197,873	10,570	32,164	241,867	0	7,470	47,466	7,234	62,170	304,037
1971	1,440	180,945	16,968	29,164	228,517	0	11,679	94,502	6,702	112,883	341,400
1972	1,524	172,827	21,650	41,783	237,784	0	6,556	29,804	1,144	37,504	275,288
1973	1,838	253,217	23,233	50,407	328,695	0	9,135	39,247	638	49,020	377,715
1974	2,088	289,202	15,506	49,528	356,324	0	7,629	79,418	510	87,557	443,881
1975	1,893	218,271	18,329	50,189	288,682	0	13,848	120,358	526	134,732	423,414
1976	2,056	276,582	27,730	51,216	357,584	0	11,256	124,957	705	136,918	494,502
1977	3,107	294,641	39,790	66,475	404,013	0	7,522	84,603	1,960	94,085	498,098
1978	3,219	331,401	42,250	73,644	450,514	0	6,047	172,294	1,324	179,665	630,179
1979	2,175	285,859	65,700	60,440	414,174	0	6,346	133,695	1,462	141,503	555,677
1980	630	333,597	83,321	34,945	452,493	0	5,225	130,912	1,965	138,102	590,595
1981	754	296,065	101,523	39,558	437,900	0	5,906	119,165	930	126,001	563,901
1982	970	264,726	169,953	44,021	479,670	0	3,760	100,499	410	104,669	584,339
1983	2,143	298,928	305,180	45,450	651,701	0	4,387	56,851	737	61,975	713,676
1984	867	366,811	323,545	39,870	731,093	0	2,884	59,859	868	63,611	794,704
1985	1,100	238,932	290,981	39,603	570,616	0	946	50,829	227	52,002	622,618
1986	1,434	322,665	359,332	46,622	730,053	0	1,921	65,634	190	67,745	797,798
1987	2,320	252,142	372,006	46,829	673,297	0	2,233	64,019	214	66,466	739,763
1988	1,930	295,325	465,970	49,571	812,796	0	4,325	87,113	689	92,127	904,923
1989	2,502	275,088	461,846	48,272	787,708	0	2,940	94,934	1,047	98,921	886,629
1990	358	211,573	569,422	75,714	857,067	0	823	74,369	1,915	77,107	934,174
1991	882	259,778	739,625	77,113	1,077,398	0	1,717	62,228	1,945	65,890	1,143,288
1992	431	218,765	680,026	72,336	971,558	0	1,957	84,283	1,054	87,294	1,058,852
1993	569	255,152	612,065	58,831	926,617	0	3,772	83,830	2,317	89,919	1,016,536
1994	353	209,636	711,530	68,918	990,437	0	3,240	70,126	804	74,170	1,064,607
1995	572	247,744	692,095	80,441	1,020,852	0	5,253	127,047	1,988	134,288	1,155,140
1996	3,874	242,486	670,004	95,543	1,011,907	0	2,555	103,973	1,313	107,841	1,119,748
1997	3,932	236,999	578,770	86,675	906,376	0	3,260	153,456	231	156,947	1,063,323
1998	4,904	266,772	796,845	100,901	1,169,422	0	1,684	140,631	531	142,846	1,312,268
1999	4,064	255,330	692,797	95,226	1,047,417	0	2,044	261,565	1,594	265,203	1,312,620
2000	4,516	264,407	766,678	120,559	1,156,160	68	231	204,307	67	204,673	1,360,833
2001	5,036	212,668	760,900	101,449	1,080,053	1,214	448	143,561	34	145,257	1,225,310
2002	3,376	207,488	949,527	98,597	1,258,988	261	616	153,303	119	154,299	1,413,287
2003	3,693	238,179	910,165	100,959	1,252,996	634	638	274,529	2,777	278,578	1,531,574
2004	3,841	249,936	968,691	126,472	1,348,940	713	528	198,664	1,105	201,010	1,549,950
2005	1,045	216,715	1,062,576	117,105	1,397,441	231	1,300	263,229	1,780	266,540	1,663,981
2006	1,470	208,220	1,158,217	126,163	1,494,070	224	435	296,269	986	297,914	1,791,984
2007	1,132	212,720	1,287,169	146,739	1,647,760	107	276	208,296	1,065	209,744	1,857,504
2008	781	218,070	1,246,791	153,687	1,619,329	56	501	296,603	1,163	298,323	1,917,652
2009	1,149	200,692	1,441,305	141,140	1,784,286	184	151	230,527	1,112	231,974	2,016,260
2010	1,151	222,948	1,331,216	133,643	1,688,958	121	47	147,192	2,964	150,324	1,839,282
2011	1,085	206,542	1,199,531	127,786	1,534,944	1,384	24	276,035	851	278,294	1,813,238
2012	1,899	170,234	1,426,005	160,250	1,758,388	2,381	303	266,215	1,040	269,939	2,028,327
2013	1,045	168,856	1,505,924	159,243	1,835,068	2,024	167	272,500	774	275,465	2,110,533
2014	1,405	148,452	1,680,675	175,560	2,006,092	230	167	261,977	774	263,148	2,269,240
2015	1,790	151,182	1,436,436	203,811	1,793,219	247	167	32,881	774	34,069	1,827,288
2016	5,471	156,371	1,413,157	220,258	1,795,257	213	167	337,562	717	338,659	2,133,916
2017	2,540	133,352	1,315,211	186,123	1,637,226	169	167	326,131	879	327,346	1,964,572
2018	4,045	138,450	1,498,790	152,224	1,793,509	169	167	326,131	879	327,346	2,120,855

Table 10. Catches of yellowfin in the Pacific Ocean

YEAR	WESTERN AND CENTRAL PACIFIC OCEAN					EASTERN PACIFIC OCEAN					TOTAL
	LONGLINE	POLE-AND-LINE	PURSE SEINE	OTHER	SUBTOTAL	LONGLINE	POLE-AND-LINE	PURSE SEINE	OTHER	SUBTOTAL	
1960	55,020	1,872	1,438	15,337	73,667	5,934	22,151	79,425	458	107,968	181,635
1961	53,166	3,259	2,777	16,236	75,438	12,500	15,220	80,058	949	108,727	184,165
1962	55,547	4,225	6,975	17,197	83,944	10,211	11,052	56,271	706	78,240	162,184
1963	53,185	2,071	2,277	18,223	75,756	18,973	7,041	48,004	688	74,706	150,462
1964	45,241	5,074	3,647	20,186	74,148	16,975	3,989	78,318	738	100,020	174,168
1965	45,487	3,434	3,752	20,956	73,629	15,620	6,983	65,348	312	88,263	161,892
1966	61,623	2,192	5,844	23,409	93,068	9,097	5,302	68,982	507	83,888	176,956
1967	35,720	3,125	3,421	26,303	68,569	9,285	4,512	65,442	1,534	80,773	149,342
1968	45,572	2,706	7,047	26,085	81,410	14,986	4,307	86,542	3,241	109,076	190,486
1969	51,372	5,166	3,869	26,612	87,019	15,329	7,195	113,665	1,866	138,055	225,074
1970	55,481	4,606	9,325	29,422	98,834	12,643	4,260	139,385	4,850	161,138	259,972
1971	56,927	5,248	10,909	31,204	104,288	8,013	5,300	104,863	2,482	120,658	224,946
1972	60,251	7,465	11,796	35,749	115,261	16,859	6,060	164,297	1,060	188,276	303,537
1973	61,818	7,458	17,078	41,726	128,080	11,697	3,933	194,200	661	210,491	338,571
1974	57,490	6,582	19,733	46,997	130,802	7,190	8,188	191,626	1,230	208,234	339,036
1975	68,416	7,801	15,274	48,536	140,027	10,640	5,629	183,028	567	199,864	339,891
1976	76,363	17,186	17,294	40,666	151,509	15,632	3,280	215,108	358	234,378	385,887
1977	92,680	15,257	18,844	55,092	181,873	12,355	1,841	184,922	248	199,366	381,239
1978	108,428	12,767	15,025	38,491	174,711	10,188	3,888	158,801	1,103	173,980	348,691
1979	104,932	11,638	31,307	46,375	194,252	11,473	4,789	170,650	212	187,124	381,376
1980	122,611	15,142	37,679	39,583	215,015	13,477	1,481	143,042	862	158,862	373,877
1981	95,574	22,044	55,479	44,533	217,630	7,999	1,477	168,234	800	178,510	396,140
1982	85,175	17,123	75,472	41,603	219,373	10,961	1,538	114,755	280	127,534	346,907
1983	87,734	17,184	122,667	45,179	272,764	10,895	4,007	83,929	849	99,680	372,444
1984	74,210	17,633	125,316	50,440	267,599	10,345	2,991	135,785	344	149,465	417,064
1985	77,674	22,717	119,254	57,803	277,448	13,198	1,070	211,459	212	225,939	503,387
1986	66,594	17,970	111,226	60,968	256,758	22,808	2,537	260,512	214	286,071	542,829
1987	72,687	19,044	154,943	57,367	304,041	18,911	5,107	262,008	138	286,164	590,205
1988	84,257	20,566	126,418	68,021	299,262	14,660	3,723	277,293	752	296,428	595,690
1989	69,921	22,133	184,520	71,530	348,104	17,032	4,145	277,996	263	299,436	647,540
1990	74,876	20,769	211,627	83,156	390,428	34,633	2,676	263,253	960	301,522	691,950
1991	58,566	19,182	246,325	92,536	416,609	30,899	2,856	231,257	958	265,970	682,579
1992	74,429	23,043	267,716	59,777	424,965	18,646	3,789	228,121	1,958	252,514	677,479
1993	69,375	20,486	216,582	59,188	365,631	24,009	4,951	219,492	3,034	251,486	617,117
1994	76,879	21,378	231,650	75,514	405,421	30,026	3,625	208,408	1,487	243,546	648,967
1995	85,210	23,209	218,360	82,395	409,174	20,596	1,268	215,434	2,066	239,364	648,538
1996	88,254	30,551	192,705	99,923	411,433	16,608	3,762	238,607	1,639	260,616	672,049
1997	78,069	22,845	308,361	83,763	493,038	22,163	4,418	244,878	600	272,059	765,097
1998	76,130	27,506	393,608	101,754	598,998	15,336	5,085	253,959	1,529	275,909	874,907
1999	68,539	26,787	314,627	103,038	512,991	11,682	1,783	281,920	2,706	298,091	811,082
2000	90,916	26,957	333,199	109,860	560,932	23,855	2,431	255,231	1,109	282,626	843,558
2001	89,797	24,443	314,572	99,047	527,859	29,608	3,916	382,702	520	416,746	944,605
2002	91,098	24,133	265,301	102,132	482,664	25,531	950	412,507	549	439,537	922,201
2003	91,031	24,304	319,491	105,505	540,331	25,174	470	381,107	1,145	407,896	948,227
2004	101,139	30,640	326,507	119,759	578,045	18,779	1,884	269,597	627	290,887	868,932
2005	83,044	27,007	373,678	63,353	547,082	12,118	1,821	268,102	1,852	283,893	830,975
2006	80,433	23,544	311,588	65,720	481,285	9,316	686	166,629	1,458	178,089	659,374
2007	79,594	26,460	333,941	72,275	512,270	7,779	894	170,016	1,439	180,128	692,398
2008	82,657	22,639	430,781	70,573	606,650	8,371	812	185,057	941	195,181	801,831
2009	96,889	23,859	323,192	96,720	540,660	8,479	709	236,771	995	246,954	787,614
2010	96,407	20,077	348,710	94,540	559,734	6,645	460	251,008	2,641	260,754	820,488
2011	95,599	36,772	307,315	81,251	520,937	8,071	276	206,851	806	216,004	736,941
2012	84,961	34,638	382,156	101,220	602,975	12,953	400	198,017	1,236	212,606	815,581
2013	74,989	21,834	347,959	103,994	548,776	11,414	754	220,038	865	233,071	781,847
2014	97,812	23,982	358,472	109,836	590,102	6,903	754	241,158	865	249,680	839,782
2015	100,839	35,653	306,659	130,869	574,020	10,787	754	245,647	865	258,053	832,073
2016	84,202	23,208	392,971	133,758	634,139	9,804	754	242,095	2,871	255,524	889,663
2017	81,995	12,229	489,974	94,217	678,415	10,524	754	209,880	2,684	223,842	902,257
2018	91,503	12,028	380,697	178,981	663,209	10,524	754	209,880	2,684	223,842	887,051

Table 11. Catches of albacore, bigeye, skipjack and yellowfin in the WCPO

YEAR	ALBACORE		BIGEYE		SKIPJACK		YELLOWFIN		TOTAL
	TONNES	%	TONNES	%	TONNES	%	TONNES	%	
1960	31,463	13	45,025	19	89,938	37	73,667	31	240,093
1961	32,922	11	39,380	13	156,736	51	75,438	25	304,476
1962	37,602	11	36,868	11	181,624	53	83,944	25	340,038
1963	26,815	10	44,346	16	122,703	46	75,756	28	269,620
1964	26,652	8	32,380	10	182,918	58	74,148	23	316,098
1965	28,724	10	31,329	11	155,221	54	73,629	25	288,903
1966	52,180	12	33,152	8	249,512	58	93,068	22	427,912
1967	55,403	15	35,908	10	204,814	56	68,569	19	364,694
1968	61,379	17	29,868	8	195,004	53	81,410	22	367,661
1969	71,137	18	34,158	9	203,321	51	87,019	22	395,635
1970	71,496	16	39,477	9	241,867	54	98,834	22	451,674
1971	96,125	20	41,659	9	228,517	49	104,288	22	470,589
1972	106,697	21	55,436	11	237,784	46	115,261	22	515,178
1973	129,538	20	46,727	7	328,695	52	128,080	20	633,040
1974	112,827	17	48,899	8	356,324	55	130,802	20	648,852
1975	83,864	15	65,415	11	288,682	50	140,027	24	577,988
1976	131,620	18	77,919	11	357,584	50	151,509	21	718,632
1977	79,436	11	77,459	10	404,013	54	181,873	24	742,781
1978	105,771	13	60,315	8	450,514	57	174,711	22	791,311
1979	84,878	11	66,687	9	414,174	54	194,252	26	759,991
1980	94,123	11	66,865	8	452,493	55	215,015	26	828,496
1981	86,385	11	59,784	7	437,900	55	217,630	27	801,699
1982	86,847	10	69,866	8	479,670	56	219,373	26	855,756
1983	64,112	6	73,427	7	651,701	61	272,764	26	1,062,004
1984	73,452	6	79,534	7	731,093	63	267,599	23	1,151,678
1985	76,034	8	81,823	8	570,616	57	277,448	28	1,005,921
1986	71,045	6	83,946	7	730,053	64	256,758	22	1,141,802
1987	60,625	5	100,626	9	673,297	59	304,041	27	1,138,589
1988	62,279	5	91,432	7	812,796	64	299,262	24	1,265,769
1989	69,949	5	98,489	8	787,708	60	348,104	27	1,304,250
1990	60,990	4	116,370	8	857,067	60	390,428	27	1,424,855
1991	56,449	3	99,354	6	1,077,398	65	416,609	25	1,649,810
1992	62,483	4	119,335	8	971,558	62	424,965	27	1,578,341
1993	71,723	5	103,733	7	926,617	63	365,631	25	1,467,704
1994	91,696	6	117,497	7	990,437	62	405,421	25	1,605,051
1995	89,851	6	100,642	6	1,020,852	63	409,174	25	1,620,519
1996	88,874	5	112,724	7	1,011,907	62	411,433	25	1,624,938
1997	109,798	7	158,380	9	906,376	54	493,038	30	1,667,592
1998	107,373	5	168,127	8	1,169,422	57	598,998	29	2,043,920
1999	127,428	7	150,842	8	1,047,417	57	512,991	28	1,838,678
2000	96,302	5	137,201	7	1,156,160	59	560,932	29	1,950,595
2001	114,463	6	137,859	7	1,080,053	58	527,859	28	1,860,234
2002	140,122	7	158,153	8	1,258,988	62	482,664	24	2,039,927
2003	110,643	5	128,596	6	1,252,996	62	540,331	27	2,032,566
2004	114,461	5	180,393	8	1,348,940	61	578,045	26	2,221,839
2005	99,759	5	143,482	7	1,397,441	64	547,082	25	2,187,764
2006	98,291	4	152,574	7	1,494,070	67	481,285	22	2,226,220
2007	121,628	5	138,656	6	1,647,760	68	512,270	21	2,420,314
2008	99,250	4	149,059	6	1,619,329	65	606,650	25	2,474,288
2009	129,154	5	147,666	6	1,784,286	69	540,660	21	2,601,766
2010	117,522	5	132,507	5	1,688,958	68	559,734	22	2,498,721
2011	109,608	5	154,391	7	1,534,944	66	520,937	22	2,319,880
2012	137,126	5	155,702	6	1,758,388	66	602,975	23	2,654,191
2013	127,619	5	143,156	5	1,835,068	69	548,776	21	2,654,619
2014	113,899	4	154,976	5	2,006,092	70	590,102	21	2,865,069
2015	107,876	4	136,280	5	1,793,219	69	574,020	22	2,611,395
2016	86,129	3	144,409	5	1,795,257	67	634,139	24	2,659,934
2017	115,095	5	122,673	5	1,637,226	64	678,415	27	2,553,409
2018	103,166	4	139,162	5	1,793,509	66	663,209	25	2,699,046

Table 12. Catches of albacore, bigeye, skipjack and yellowfin in the EPO

YEAR	ALBACORE		BIGEYE		SKIPJACK		YELLOWFIN		TOTAL
	TONNES	%	TONNES	%	TONNES	%	TONNES	%	
1960	23,292	12	17,746	9	46,059	24	107,968	55	195,065
1961	15,862	6	52,642	21	75,129	30	108,727	43	252,360
1962	22,659	10	45,670	20	77,102	34	78,240	35	223,671
1963	29,799	11	66,757	24	101,931	37	74,706	27	273,193
1964	22,586	10	46,406	20	65,674	28	100,020	43	234,686
1965	17,939	8	29,395	13	84,969	39	88,263	40	220,566
1966	17,938	9	35,302	17	66,307	33	83,888	41	203,435
1967	22,524	8	38,880	14	127,982	47	80,773	30	270,159
1968	26,249	10	39,966	16	77,110	31	109,076	43	252,401
1969	22,646	8	53,164	19	64,894	23	138,055	50	278,759
1970	26,809	9	35,752	13	62,170	22	161,138	56	285,869
1971	24,517	8	34,256	12	112,883	39	120,658	41	292,314
1972	29,548	10	40,225	14	37,504	13	188,276	64	295,553
1973	18,763	6	54,355	16	49,020	15	210,491	63	332,629
1974	25,257	7	38,515	11	87,557	24	208,234	58	359,563
1975	23,051	6	48,343	12	134,732	33	199,864	49	405,990
1976	20,577	4	71,584	15	136,918	30	234,378	51	463,457
1977	24,024	6	85,249	21	94,085	23	199,366	50	402,724
1978	31,108	7	89,198	19	179,665	38	173,980	37	473,951
1979	10,953	3	67,533	17	141,503	35	187,124	46	407,113
1980	11,569	3	86,403	22	138,102	35	158,862	40	394,936
1981	20,283	5	68,344	17	126,001	32	178,510	45	393,138
1982	12,522	4	60,349	20	104,669	34	127,534	42	305,074
1983	15,729	6	64,694	27	61,975	26	99,680	41	242,078
1984	21,857	8	55,268	19	63,611	22	149,465	52	290,201
1985	14,841	4	72,398	20	52,002	14	225,939	62	365,180
1986	11,284	2	105,185	22	67,745	14	286,071	61	470,285
1987	12,977	3	101,347	22	66,466	14	286,164	61	466,954
1988	15,771	3	74,313	16	92,127	19	296,428	62	478,639
1989	9,501	2	72,994	15	98,921	21	299,436	62	480,852
1990	10,850	2	104,851	21	77,107	16	301,522	61	494,330
1991	11,481	3	109,121	24	65,890	15	265,970	59	452,462
1992	23,075	5	92,000	20	87,294	19	252,514	56	454,883
1993	15,605	4	82,190	19	89,919	20	251,486	57	439,200
1994	20,618	5	107,065	24	74,170	17	243,546	55	445,399
1995	14,075	3	104,959	21	134,288	27	239,364	49	492,686
1996	16,112	3	109,017	22	107,841	22	260,616	53	493,586
1997	17,279	3	116,872	21	156,947	28	272,059	48	563,157
1998	25,913	5	91,132	17	142,846	27	275,909	51	535,800
1999	26,464	4	88,146	13	265,203	39	298,091	44	677,904
2000	23,275	4	142,498	22	204,673	31	282,626	43	653,072
2001	33,336	5	129,930	18	145,257	20	416,746	57	725,269
2002	30,154	4	131,876	17	154,299	20	439,537	58	755,866
2003	45,538	5	113,971	13	278,578	33	407,896	48	845,983
2004	40,834	6	111,269	17	201,010	31	290,887	45	644,000
2005	27,203	4	109,352	16	266,540	39	283,893	41	686,988
2006	32,992	5	117,679	19	297,914	48	178,089	28	626,674
2007	31,128	6	93,342	18	209,744	41	180,128	35	514,342
2008	26,627	4	101,192	16	298,323	48	195,181	31	621,323
2009	31,619	5	108,097	17	231,974	37	246,954	40	618,644
2010	34,048	6	94,784	18	150,324	28	260,754	48	539,910
2011	37,023	6	89,142	14	278,294	45	216,004	35	620,463
2012	42,309	7	102,194	16	269,939	43	212,606	34	627,048
2013	43,905	7	88,745	14	275,465	43	233,071	36	641,186
2014	51,281	8	91,899	14	263,148	40	249,680	38	656,008
2015	46,020	10	104,571	24	34,069	8	258,053	58	442,713
2016	41,271	6	92,270	13	338,659	47	255,524	35	727,724
2017	35,561	5	101,573	15	327,346	48	223,842	33	688,322
2018	35,561	5	101,573	15	327,346	48	223,842	33	688,322

Table 13. Catches of albacore, bigeye, skipjack and yellowfin in the Pacific Ocean

YEAR	ALBACORE		BIGEYE		SKIPJACK		YELLOWFIN		TOTAL
	TONNES	%	TONNES	%	TONNES	%	TONNES	%	
1960	85,707	18	62,771	13	135,997	29	181,635	39	466,110
1961	76,398	13	92,022	16	231,865	40	184,165	32	584,450
1962	82,562	14	82,538	14	258,726	44	162,184	28	586,010
1963	100,185	17	111,103	19	224,634	38	150,462	26	586,384
1964	85,414	15	78,786	13	248,592	42	174,168	30	586,960
1965	99,009	18	60,724	11	240,190	43	161,892	29	561,815
1966	105,353	16	68,454	10	315,819	47	176,956	27	666,582
1967	127,663	19	74,788	11	332,796	49	149,342	22	684,589
1968	102,826	16	69,834	11	272,114	43	190,486	30	635,260
1969	100,966	15	87,322	13	268,215	39	225,074	33	681,577
1970	105,911	14	75,229	10	304,037	41	259,972	35	745,149
1971	133,348	17	75,915	10	341,400	44	224,946	29	775,609
1972	152,045	18	95,661	12	275,288	33	303,537	37	826,531
1973	154,422	16	101,082	10	377,715	39	338,571	35	971,790
1974	149,330	15	87,414	9	443,881	44	339,036	33	1,019,661
1975	113,804	11	113,758	11	423,414	43	339,891	34	990,867
1976	155,028	13	149,503	13	494,502	42	385,887	33	1,184,920
1977	102,141	9	162,708	14	498,098	44	381,239	33	1,144,186
1978	134,054	11	149,513	12	630,179	50	348,691	28	1,262,437
1979	98,292	8	134,220	11	555,677	48	381,376	33	1,169,565
1980	107,775	9	153,268	13	590,595	48	373,877	31	1,225,515
1981	106,185	9	128,128	11	563,901	47	396,140	33	1,194,354
1982	99,778	9	130,215	11	584,339	50	346,907	30	1,161,239
1983	80,643	6	138,121	11	713,676	55	372,444	29	1,304,884
1984	95,904	7	134,802	9	794,704	55	417,064	29	1,442,474
1985	90,739	7	154,221	11	622,618	45	503,387	37	1,370,965
1986	81,934	5	189,131	12	797,798	50	542,829	34	1,611,692
1987	74,082	5	201,973	13	739,763	46	590,205	37	1,606,023
1988	83,617	5	165,745	9	904,923	52	595,690	34	1,749,975
1989	94,281	5	171,483	10	886,629	49	647,540	36	1,799,933
1990	90,381	5	221,221	11	934,174	48	691,950	36	1,937,726
1991	73,534	3	208,475	10	1,143,288	54	682,579	32	2,107,876
1992	94,061	5	211,335	10	1,058,852	52	677,479	33	2,041,727
1993	90,238	5	185,923	10	1,016,536	53	617,117	32	1,909,814
1994	116,152	6	224,562	11	1,064,607	52	648,967	32	2,054,288
1995	104,959	5	205,601	10	1,155,140	55	648,538	31	2,114,238
1996	116,957	5	221,741	10	1,119,748	53	672,049	32	2,130,495
1997	141,576	6	275,252	12	1,063,323	47	765,097	34	2,245,248
1998	144,737	6	259,259	10	1,312,268	51	874,907	34	2,591,171
1999	161,818	6	238,988	9	1,312,620	52	811,082	32	2,524,508
2000	130,802	5	279,699	11	1,360,833	52	843,558	32	2,614,892
2001	145,397	6	267,789	10	1,225,310	47	944,605	37	2,583,101
2002	178,525	6	290,029	10	1,413,287	50	922,201	33	2,804,042
2003	157,013	5	242,567	8	1,531,574	53	948,227	33	2,879,381
2004	155,658	5	291,662	10	1,549,950	54	868,932	30	2,866,202
2005	130,043	5	252,834	9	1,663,981	58	830,975	29	2,877,833
2006	132,205	5	270,253	9	1,791,984	63	659,374	23	2,853,816
2007	153,235	5	231,998	8	1,857,504	63	692,398	24	2,935,135
2008	130,995	4	250,251	8	1,917,652	62	801,831	26	3,100,729
2009	167,015	5	255,763	8	2,016,260	62	787,614	24	3,226,652
2010	155,869	5	227,291	7	1,839,282	60	820,488	27	3,042,930
2011	146,020	5	243,533	8	1,813,238	62	736,941	25	2,939,732
2012	179,911	5	257,896	8	2,028,327	62	815,581	25	3,281,715
2013	171,172	5	231,901	7	2,110,533	64	781,847	24	3,295,453
2014	162,827	5	246,875	7	2,269,240	64	839,782	24	3,518,724
2015	155,233	5	240,851	8	1,827,288	60	832,073	27	3,055,445
2016	125,071	4	236,679	7	2,133,916	63	889,663	26	3,385,329
2017	153,284	5	224,246	7	1,964,572	61	902,257	28	3,244,359
2018	124,871	4	240,735	7	2,120,855	63	887,051	26	3,373,512

Table 14. Global catches of albacore, bigeye, skipjack and yellowfin

YEAR	ALBACORE		BIGEYE		SKIPJACK		YELLOWFIN		TOTAL
	TONNES	%	TONNES	%	TONNES	%	TONNES	%	
1960	161,181	23	88,048	13	155,782	22	293,249	42	698,260
1961	146,524	18	124,098	15	253,353	31	284,369	35	808,344
1962	179,312	21	124,222	14	286,687	33	274,099	32	864,320
1963	192,066	22	150,516	18	263,950	31	248,781	29	855,313
1964	195,404	22	120,296	14	287,607	33	277,314	31	880,621
1965	203,023	23	119,244	14	290,750	33	265,353	30	878,370
1966	195,951	20	117,633	12	370,217	38	291,029	30	974,830
1967	225,080	23	124,652	13	391,383	39	254,047	26	995,162
1968	192,556	19	130,908	13	354,663	34	362,088	35	1,040,215
1969	197,162	18	153,303	14	334,042	31	383,850	36	1,068,357
1970	189,341	17	143,017	13	397,187	36	374,806	34	1,104,351
1971	227,988	19	152,620	13	461,520	39	340,122	29	1,182,250
1972	246,734	20	161,235	13	389,016	31	440,174	36	1,237,159
1973	251,592	18	173,981	12	505,504	36	472,855	34	1,403,932
1974	248,620	16	178,150	12	615,246	40	486,811	32	1,528,827
1975	184,759	13	211,203	15	518,919	37	505,828	36	1,420,709
1976	247,134	15	222,686	14	614,648	38	554,107	34	1,638,575
1977	190,096	11	252,175	15	649,814	39	577,708	35	1,669,793
1978	225,434	13	251,658	14	780,438	43	540,656	30	1,798,186
1979	190,713	11	213,703	13	693,962	42	560,848	34	1,659,226
1980	183,350	11	251,371	14	757,080	43	551,792	32	1,743,593
1981	180,719	10	230,572	13	751,180	43	600,888	34	1,763,359
1982	197,808	11	246,965	14	798,583	44	571,312	31	1,814,668
1983	167,689	9	247,244	13	921,934	47	604,777	31	1,941,644
1984	172,703	8	249,416	12	1,035,848	49	639,322	30	2,097,289
1985	177,401	8	284,658	13	883,235	41	785,336	37	2,130,630
1986	203,418	8	311,747	13	1,071,219	44	836,135	35	2,422,519
1987	187,782	8	322,826	13	1,028,343	42	898,456	37	2,437,407
1988	180,209	7	305,742	11	1,250,820	47	947,405	35	2,684,176
1989	178,283	6	318,965	12	1,253,206	45	1,015,749	37	2,766,203
1990	192,512	6	379,581	13	1,308,469	44	1,127,214	37	3,007,776
1991	158,961	5	381,751	12	1,609,403	50	1,083,773	34	3,233,888
1992	185,530	6	382,478	12	1,515,407	47	1,157,978	36	3,241,393
1993	182,261	6	399,426	12	1,534,706	47	1,172,041	36	3,288,434
1994	212,420	6	467,295	14	1,591,617	47	1,147,788	34	3,419,120
1995	195,581	6	451,246	13	1,655,865	48	1,135,578	33	3,438,270
1996	207,498	6	471,203	14	1,590,024	46	1,168,956	34	3,437,681
1997	228,715	6	532,644	15	1,548,856	44	1,243,490	35	3,553,705
1998	241,655	6	511,617	13	1,804,551	46	1,334,261	34	3,892,084
1999	266,537	7	518,428	13	1,905,319	48	1,307,562	33	3,997,846
2000	239,696	6	512,920	13	1,937,499	48	1,312,400	33	4,002,515
2001	259,038	7	482,403	12	1,813,330	46	1,426,301	36	3,981,072
2002	273,295	7	507,856	12	2,017,904	48	1,403,288	33	4,202,343
2003	244,815	6	463,891	11	2,156,513	49	1,516,275	35	4,381,494
2004	240,224	5	517,249	12	2,172,106	49	1,504,545	34	4,434,124
2005	219,244	5	447,939	10	2,365,991	53	1,431,016	32	4,464,190
2006	229,394	5	456,875	10	2,544,690	58	1,173,632	27	4,404,591
2007	244,952	6	427,951	10	2,466,700	58	1,099,377	26	4,238,980
2008	209,090	5	438,832	10	2,504,804	57	1,232,197	28	4,384,923
2009	246,741	5	457,168	10	2,629,963	58	1,174,944	26	4,508,816
2010	240,665	6	388,583	9	2,452,630	57	1,240,439	29	4,322,317
2011	228,449	5	414,273	10	2,415,099	57	1,176,015	28	4,233,836
2012	266,274	6	453,714	10	2,622,415	56	1,321,268	28	4,663,671
2013	249,427	5	412,912	9	2,803,247	59	1,282,047	27	4,747,633
2014	243,928	5	414,939	8	2,924,495	59	1,353,190	27	4,936,552
2015	235,001	5	417,133	9	2,470,115	55	1,352,178	30	4,474,427
2016	209,773	4	403,468	8	2,859,649	58	1,450,204	29	4,923,094
2017	237,117	5	394,447	8	2,735,862	57	1,441,572	30	4,808,998
2018	208,704	4	410,936	8	2,892,145	59	1,418,836	29	4,930,621

Table 15. Catches of albacore, bigeye, skipjack and yellowfin by ocean area. Estimates for the Indian Ocean for 2018 have been carried over from 2017, respectively.

YEAR	WCPO		EPO		ATLANTIC		INDIAN		TOTAL
	TONNES	%	TONNES	%	TONNES	%	TONNES	%	
1960	240,093	34	226,017	32	145,384	21	86,766	12	698,260
1961	304,476	38	279,974	35	135,230	17	88,664	11	808,344
1962	340,038	39	245,972	28	169,697	20	108,613	13	864,320
1963	269,620	32	316,764	37	188,394	22	80,535	9	855,313
1964	316,098	36	270,862	31	201,987	23	91,674	10	880,621
1965	288,903	33	272,912	31	222,199	25	94,356	11	878,370
1966	427,912	44	238,670	24	181,817	19	126,431	13	974,830
1967	364,694	37	319,895	32	184,929	19	125,644	13	995,162
1968	367,661	35	267,599	26	228,017	22	176,938	17	1,040,215
1969	395,635	37	285,942	27	236,694	22	150,086	14	1,068,357
1970	451,674	41	293,475	27	237,191	21	122,011	11	1,104,351
1971	470,589	40	305,020	26	290,958	25	115,683	10	1,182,250
1972	515,178	42	311,353	25	301,937	24	108,691	9	1,237,159
1973	633,040	45	338,750	24	304,880	22	127,262	9	1,403,932
1974	648,852	42	370,809	24	358,304	23	150,862	10	1,528,827
1975	577,988	41	412,879	29	302,119	21	127,723	9	1,420,709
1976	718,632	44	466,288	28	316,778	19	136,877	8	1,638,575
1977	742,781	44	401,405	24	372,569	22	153,038	9	1,669,793
1978	791,311	44	471,126	26	368,658	21	167,091	9	1,798,186
1979	759,991	46	409,574	25	338,014	20	151,647	9	1,659,226
1980	828,496	48	397,019	23	367,602	21	150,476	9	1,743,593
1981	801,699	45	392,655	22	416,733	24	152,272	9	1,763,359
1982	855,756	47	305,483	17	469,190	26	184,239	10	1,814,668
1983	1,062,004	55	242,880	13	430,504	22	206,256	11	1,941,644
1984	1,151,678	55	290,796	14	372,368	18	282,447	13	2,097,289
1985	1,005,921	47	365,044	17	429,982	20	329,683	15	2,130,630
1986	1,141,802	47	469,890	19	423,538	17	387,289	16	2,422,519
1987	1,138,589	47	467,434	19	403,643	17	427,741	18	2,437,407
1988	1,265,769	47	484,206	18	414,430	15	519,771	19	2,684,176
1989	1,304,250	47	495,683	18	424,384	15	541,886	20	2,766,203
1990	1,424,855	47	512,871	17	489,460	16	580,590	19	3,007,776
1991	1,649,810	51	458,066	14	539,051	17	586,961	18	3,233,888
1992	1,578,341	49	463,386	14	503,396	16	696,270	21	3,241,393
1993	1,467,704	45	442,110	13	554,088	17	824,532	25	3,288,434
1994	1,605,051	47	449,237	13	562,096	16	802,736	23	3,419,120
1995	1,620,519	47	493,719	14	514,855	15	809,177	24	3,438,270
1996	1,624,938	47	505,557	15	489,079	14	818,107	24	3,437,681
1997	1,667,592	47	577,656	16	452,083	13	856,374	24	3,553,705
1998	2,043,920	53	547,251	14	469,574	12	831,339	21	3,892,084
1999	1,838,678	46	685,830	17	502,204	13	971,134	24	3,997,846
2000	1,950,595	49	664,297	17	459,662	11	927,961	23	4,002,515
2001	1,860,234	47	722,867	18	484,624	12	913,347	23	3,981,072
2002	2,039,927	49	764,115	18	394,379	9	1,003,922	24	4,202,343
2003	2,032,566	46	846,815	19	424,528	10	1,077,585	25	4,381,494
2004	2,221,839	50	644,363	15	419,111	9	1,148,811	26	4,434,124
2005	2,187,764	49	690,069	15	399,550	9	1,186,807	27	4,464,190
2006	2,226,220	51	627,596	14	381,814	9	1,168,961	27	4,404,591
2007	2,420,314	57	514,821	12	370,258	9	933,587	22	4,238,980
2008	2,474,288	56	626,441	14	366,618	8	917,576	21	4,384,923
2009	2,601,766	58	624,886	14	421,152	9	861,012	19	4,508,816
2010	2,498,721	58	544,209	13	424,547	10	854,840	20	4,322,317
2011	2,319,880	55	619,852	15	456,295	11	837,809	20	4,233,836
2012	2,654,191	57	627,524	13	489,199	10	892,757	19	4,663,671
2013	2,654,619	56	640,834	13	476,802	10	975,378	21	4,747,633
2014	2,865,069	58	653,655	13	461,121	9	956,707	19	4,936,552
2015	2,611,395	58	444,050	10	490,901	11	928,081	21	4,474,427
2016	2,659,934	54	725,395	15	531,776	11	1,005,989	20	4,923,094
2017	2,553,409	53	690,950	14	525,771	11	1,038,868	22	4,808,998
2018	2,699,046	55	674,466	14	518,241	11	1,038,868	21	4,930,621

Table 16. Estimated Discards (tonnes) by longliners in the WCPFC Statistical Area
(2017-2018 data are provisional)

YEAR	ALBACORE			BIGEYE			YELLOWFIN			TOTAL		
	Retained + Discarded	Discarded	%	Retained + Discarded	Discarded	%	Retained + Discarded	Discarded	%	Retained + Discarded	Discarded	%
1994	65,031	5,892	9.1%	81,487	2,379	2.9%	86,063	4,062	4.7%	232,581	12,333	5.3%
1995	63,335	3,091	4.9%	69,297	1,192	1.7%	92,598	4,500	4.9%	225,229	8,783	3.9%
1996	64,509	3,058	4.7%	59,064	1,028	1.7%	93,045	1,172	1.3%	216,618	5,258	2.4%
1997	80,358	8,534	10.6%	71,115	2,610	3.7%	84,048	3,093	3.7%	235,520	14,237	6.0%
1998	90,143	11,376	12.6%	87,957	3,008	3.4%	83,712	2,721	3.3%	261,812	17,105	6.5%
1999	69,763	942	1.4%	75,641	688	0.9%	72,117	1,111	1.5%	217,521	2,741	1.3%
2000	69,986	406	0.6%	77,358	449	0.6%	97,432	585	0.6%	244,776	1,439	0.6%
2001	88,780	3,924	4.4%	79,024	356	0.5%	96,113	577	0.6%	263,917	4,856	1.8%
2002	94,559	4,908	5.2%	93,647	1,283	1.4%	97,280	1,663	1.7%	285,486	7,854	2.8%
2003	79,235	444	0.6%	84,178	1,178	1.4%	97,540	1,863	1.9%	260,954	3,485	1.3%
2004	78,984	2,069	2.6%	101,041	1,354	1.3%	105,620	1,584	1.5%	285,644	5,008	1.8%
2005	84,872	1,842	2.2%	79,171	578	0.7%	88,108	696	0.8%	252,150	3,116	1.2%
2006	86,482	1,254	1.5%	84,345	793	0.9%	85,861	876	1.0%	256,688	2,923	1.1%
2007	81,501	1,353	1.7%	82,342	1,005	1.2%	83,250	824	1.0%	247,093	3,182	1.3%
2008	80,770	1,769	2.2%	84,415	1,064	1.3%	86,539	2,423	2.8%	251,724	5,256	2.1%
2009	100,982	1,888	1.9%	80,878	388	0.5%	100,072	721	0.7%	281,932	2,997	1.1%
2010	103,520	1,729	1.7%	73,303	586	0.8%	99,051	683	0.7%	275,874	2,999	1.1%
2011	86,413	1,141	1.3%	78,109	547	0.7%	98,089	647	0.7%	262,611	2,335	0.9%
2012	101,622	793	0.8%	84,500	532	0.6%	88,560	903	1.0%	274,682	2,228	0.8%
2013	98,724	760	0.8%	66,878	1,264	1.9%	78,818	1,647	2.1%	244,419	3,671	1.5%
2014	87,761	720	0.8%	76,985	1,686	2.2%	102,433	2,100	2.1%	267,178	4,505	1.7%
2015	94,310	632	0.7%	73,104	1,513	2.1%	105,963	2,257	2.1%	273,376	4,402	1.6%
2016	78,321	956	1.2%	63,975	1,286	2.0%	91,542	2,353	2.6%	233,837	4,594	2.0%
2017	98,561	759	0.8%	58,066	1,423	2.5%	84,830	2,486	2.9%	241,457	4,667	1.9%
2018	84,930	807	1.0%	71,305	2,246	3.2%	94,509	2,760	2.9%	250,744	5,813	2.3%
Average	84,538	2,442	2.9%	77,487	1,217	1.6%	91,728	1,772	1.9%	253,753	5,431	2.1%

Table 17. Estimated Discards (tonnes) by purse seiners in tropical waters of the WCPFC Statistical Area, excluding the domestic fisheries of Indonesia and the Philippines

YEAR	SKIPJACK			YELLOWFIN			BIGEYE			TOTAL		
	Retained + Discarded	Discarded	%	Retained + Discarded	Discarded	%	Retained + Discarded	Discarded	%	Retained + Discarded	Discarded	%
1995	561,844	13,316	2.4%	190,824	2,004	1.1%	23,369	308	1.3%	776,036	15,628	2.0%
1996	546,344	18,466	3.4%	161,626	2,004	1.2%	41,182	1,087	2.6%	749,153	21,558	2.9%
1997	410,090	12,221	3.0%	270,092	2,080	0.8%	76,568	1,087	1.4%	756,749	15,388	2.0%
1998	581,876	18,562	3.2%	372,125	6,959	1.9%	67,197	941	1.4%	1,021,198	26,461	2.6%
1999	536,381	18,022	3.4%	291,699	5,892	2.0%	66,825	1,731	2.6%	894,905	25,645	2.9%
2000	621,084	30,185	4.9%	296,323	3,111	1.1%	45,256	1,439	3.2%	962,663	34,735	3.6%
2001	628,166	34,361	5.5%	279,257	2,262	0.8%	50,316	1,283	2.6%	957,740	37,906	4.0%
2002	815,430	41,016	5.0%	238,016	2,737	1.2%	57,696	837	1.5%	1,111,142	44,590	4.0%
2003	721,096	25,238	3.5%	280,732	4,885	1.7%	36,723	525	1.4%	1,038,551	30,648	3.0%
2004	778,745	34,498	4.4%	284,111	9,006	3.2%	66,510	2,082	3.1%	1,129,365	45,586	4.0%
2005	890,179	40,503	4.6%	319,729	7,034	2.2%	52,678	2,191	4.2%	1,262,586	49,729	3.9%
2006	969,153	22,291	2.3%	252,720	4,145	1.6%	50,100	762	1.5%	1,271,973	27,197	2.1%
2007	1,087,719	31,870	2.9%	283,333	3,343	1.2%	44,642	741	1.7%	1,415,694	35,955	2.5%
2008	1,013,958	20,178	2.0%	375,206	4,578	1.2%	52,612	1,263	2.4%	1,441,776	26,018	1.8%
2009	1,233,424	27,875	2.3%	286,635	4,643	1.6%	55,383	1,589	2.9%	1,575,443	34,108	2.2%
2010	1,143,776	15,098	1.3%	326,040	3,358	1.0%	52,976	747	1.4%	1,522,792	19,203	1.3%
2011	1,084,418	11,820	1.1%	286,868	2,295	0.8%	70,632	939	1.3%	1,441,918	15,055	1.0%
2012	1,284,714	19,913	1.6%	348,475	3,798	1.1%	63,488	895	1.4%	1,696,677	24,607	1.5%
2013	1,262,135	35,087	2.8%	307,227	5,561	1.8%	70,098	1,402	2.0%	1,639,460	42,050	2.6%
2014	1,487,324	64,104	4.3%	333,964	7,915	2.4%	66,643	1,933	2.9%	1,887,931	73,951	3.9%
2015	1,313,836	41,123	3.1%	279,966	6,467	2.3%	47,056	1,501	3.2%	1,640,858	49,091	3.0%
2016	1,248,541	38,954	3.1%	334,903	5,727	1.7%	59,040	1,866	3.2%	1,642,484	46,547	2.8%
2017	1,090,260	17,444	1.6%	365,214	4,346	1.2%	57,258	1,237	2.2%	1,512,732	23,027	1.5%
2018	1,353,018	12,583	0.9%	313,821	2,385	0.8%	60,366	495	0.8%	1,727,205	15,463	0.9%
Average	944,313	26,864	2.8%	294,955	4,439	1.5%	55,609	1,203	2.2%	1,294,876	32,506	2.5%

Table 18. Commercial catches of billfish in the WCPFC Statistical Area, by gear type and species

YEAR	LONGLINE					PURSESEINE			YEAR	OTHER COMMERCIAL GEARS					TOTAL
	BLUE MARLIN	BLACK MARLIN	STRIPED MARLIN	SWORD-FISH	SUB-TOTAL	BLUE MARLIN	BLACK MARLIN	SUB-TOTAL		BLUE MARLIN	BLACK MARLIN	STRIPED MARLIN	SWORD-FISH	SUB-TOTAL	
1962	14,197	2,091	15,207	10,354	41,849	0	0	0	1962	1,023	65	0	38	1,126	42,975
1963	11,583	2,100	12,384	9,741	35,808	0	0	0	1963	1,084	69	0	41	1,194	37,002
1964	10,240	1,697	17,023	5,942	34,902	0	0	0	1964	1,187	73	2,366	1,203	4,829	39,731
1965	8,303	2,260	13,298	8,176	32,037	0	0	0	1965	1,283	77	2,790	2,118	6,268	38,305
1966	8,763	2,408	9,648	9,821	30,640	0	0	0	1966	1,379	82	1,676	1,934	5,071	35,711
1967	7,287	2,362	11,506	10,643	31,798	0	0	0	1967	1,497	87	1,641	1,161	4,386	36,184
1968	6,673	2,951	11,783	9,504	30,911	0	1	1	1968	1,528	92	1,255	1,883	4,758	35,670
1969	7,091	2,619	8,500	8,945	27,155	0	1	1	1969	1,745	98	2,625	1,673	6,141	33,297
1970	9,977	3,544	7,594	7,578	28,693	6	14	20	1970	1,850	125	1,184	1,895	5,054	33,767
1971	6,450	3,776	6,373	8,615	25,214	8	19	27	1971	2,064	140	2,284	617	5,105	30,346
1972	7,957	3,696	5,194	8,110	24,957	9	20	29	1972	2,154	146	1,369	436	4,105	29,091
1973	7,483	3,793	5,550	7,303	24,129	14	31	45	1973	2,877	174	4,011	972	8,034	32,208
1974	7,253	3,115	4,788	7,990	23,146	7	17	24	1974	3,238	201	3,930	1,789	9,158	32,328
1975	7,079	3,281	3,764	8,519	22,643	7	17	24	1975	3,986	206	7,255	3,072	14,519	37,186
1976	6,710	2,242	3,497	9,955	22,404	6	16	22	1976	3,603	175	4,163	4,138	12,079	34,505
1977	7,020	2,427	2,948	9,583	21,978	9	21	30	1977	4,858	243	4,980	2,802	12,883	34,891
1978	8,861	2,787	3,744	9,871	25,263	8	20	28	1978	3,604	156	6,035	2,855	12,650	37,941
1979	9,414	2,395	5,059	11,178	28,046	13	29	42	1979	3,681	196	3,058	1,368	8,303	36,391
1980	10,245	1,552	4,823	8,740	25,360	13	29	42	1980	3,631	177	4,008	2,308	10,124	35,526
1981	10,332	2,009	4,773	10,111	27,225	30	60	90	1981	4,245	195	4,410	2,201	11,051	38,366
1982	10,398	2,023	4,536	9,214	26,171	42	90	132	1982	3,904	175	2,997	1,643	8,719	35,022
1983	9,005	1,741	3,476	10,108	24,330	67	132	199	1983	4,243	194	2,667	1,386	8,490	33,019
1984	12,197	1,317	4,836	9,975	28,325	86	161	247	1984	3,536	211	3,060	1,420	8,227	36,799
1985	9,667	1,048	5,509	12,415	28,639	69	137	206	1985	4,205	257	3,116	1,540	9,118	37,963
1986	10,348	1,121	6,175	11,473	29,117	66	128	194	1986	4,045	268	4,181	1,633	10,127	39,438
1987	14,403	1,533	5,558	12,930	34,424	73	145	218	1987	3,164	195	2,399	1,317	7,075	41,717
1988	14,553	2,294	7,613	12,804	37,264	71	142	213	1988	3,750	222	2,880	1,552	8,404	45,881
1989	11,893	1,207	6,646	10,695	30,441	86	169	255	1989	4,059	241	2,211	2,115	8,626	39,322
1990	10,200	1,120	4,871	11,470	27,661	95	184	279	1990	5,251	342	2,489	1,388	9,470	37,410
1991	10,842	1,449	5,237	12,713	30,241	135	253	388	1991	5,837	388	1,839	883	8,947	39,576
1992	13,302	1,650	5,363	18,322	38,637	141	241	382	1992	3,046	218	1,515	1,393	6,172	45,191
1993	15,854	1,428	10,600	19,637	47,519	142	246	388	1993	3,182	221	1,267	747	5,417	53,324
1994	15,609	1,844	6,189	17,057	40,699	141	239	380	1994	4,673	289	1,824	924	7,710	48,789
1995	18,044	1,335	7,189	15,714	42,282	144	242	386	1995	5,254	330	1,248	1,203	8,035	50,703
1996	14,526	945	5,834	15,177	36,482	160	263	423	1996	5,688	339	912	1,260	8,199	45,104
1997	12,544	964	5,010	18,175	36,693	179	270	449	1997	2,212	120	1,017	830	4,179	41,321
1998	16,449	1,545	7,080	19,299	44,373	182	267	449	1998	2,365	138	1,421	1,082	5,006	49,828
1999	14,573	1,927	5,882	20,539	42,921	153	235	388	1999	2,391	141	1,340	1,256	5,128	48,437
2000	13,797	1,296	4,264	21,214	40,571	184	273	457	2000	1,558	96	1,380	1,404	4,438	45,466
2001	15,583	1,498	4,779	18,286	40,146	189	257	446	2001	1,592	90	1,370	1,050	4,102	44,694
2002	15,527	1,795	4,375	18,889	40,586	205	278	483	2002	1,611	99	1,587	1,452	4,749	45,818
2003	24,193	2,031	5,364	20,236	51,824	214	283	497	2003	1,805	122	1,261	1,440	4,628	56,949
2004	21,847	2,293	4,955	22,065	51,160	226	293	519	2004	1,825	126	1,466	1,383	4,800	56,479
2005	20,126	2,734	4,277	19,776	46,913	848	628	1,476	2005	1,909	129	1,334	1,542	4,914	53,303
2006	17,850	2,430	4,028	22,690	46,998	611	399	1,010	2006	1,955	142	1,308	1,447	4,852	52,860
2007	15,035	1,773	3,406	24,835	45,049	824	268	1,092	2007	2,205	161	1,083	1,389	4,838	50,979
2008	15,011	1,771	3,639	22,523	42,944	592	442	1,034	2008	3,784	186	1,446	1,227	6,643	50,621
2009	14,916	1,972	2,827	19,759	39,474	579	344	923	2009	2,569	126	974	1,211	4,880	45,277
2010	15,904	2,104	2,855	17,351	38,214	644	661	1,305	2010	2,794	126	1,042	856	4,818	44,337
2011	14,913	1,739	3,688	18,007	38,347	752	429	1,181	2011	2,780	126	492	461	3,859	43,387
2012	14,539	1,563	3,758	19,551	39,411	918	367	1,285	2012	3,109	147	741	1,886	5,883	46,579
2013	15,835	1,682	3,442	18,015	38,974	946	529	1,475	2013	3,315	160	469	2,897	6,841	47,290
2014	16,913	2,050	3,696	18,045	40,704	869	424	1,293	2014	3,288	161	277	2,612	6,338	48,337
2015	16,110	2,276	3,998	18,887	41,271	1,218	350	1,568	2015	3,340	161	442	2,807	6,750	49,631
2016	14,669	1,213	2,759	17,712	36,353	949	336	1,285	2016	5,961	145	708	3,750	10,564	48,284
2017	12,635	928	3,168	17,934	34,665	561	379	940	2017	3,591	1,084	398	1,994	7,067	42,723
2018	11,685	971	2,961	18,897	34,514	721	404	1,125	2018	3,603	1,084	403	2,010	7,100	42,796

Table 19. Commercial catches of billfish in the WCPFC Statistical Area, by species

YEAR	BLUE MARLIN		BLACK MARLIN		STRIPED MARLIN		SWORDFISH		TOTAL
	TONNES	%	TONNES	%	TONNES	%	TONNES	%	
1962	15,220	35	2,156	5	15,207	35	10,392	24	42,975
1963	12,667	34	2,169	6	12,384	33	9,782	26	37,002
1964	11,427	29	1,770	4	19,389	49	7,145	18	39,731
1965	9,586	25	2,337	6	16,088	42	10,294	27	38,305
1966	10,142	28	2,490	7	11,324	32	11,755	33	35,711
1967	8,784	24	2,449	7	13,147	36	11,804	33	36,184
1968	8,201	23	3,044	9	13,038	37	11,387	32	35,670
1969	8,836	27	2,718	8	11,125	33	10,618	32	33,297
1970	11,833	35	3,683	11	8,778	26	9,473	28	33,767
1971	8,522	28	3,935	13	8,657	29	9,232	30	30,346
1972	10,120	35	3,862	13	6,563	23	8,546	29	29,091
1973	10,374	32	3,998	12	9,561	30	8,275	26	32,208
1974	10,498	32	3,333	10	8,718	27	9,779	30	32,328
1975	11,072	30	3,504	9	11,019	30	11,591	31	37,186
1976	10,319	30	2,433	7	7,660	22	14,093	41	34,505
1977	11,887	34	2,691	8	7,928	23	12,385	35	34,891
1978	12,473	33	2,963	8	9,779	26	12,726	34	37,941
1979	13,108	36	2,620	7	8,117	22	12,546	34	36,391
1980	13,889	39	1,758	5	8,831	25	11,048	31	35,526
1981	14,607	38	2,264	6	9,183	24	12,312	32	38,366
1982	14,344	41	2,288	7	7,533	22	10,857	31	35,022
1983	13,315	40	2,067	6	6,143	19	11,494	35	33,019
1984	15,819	43	1,689	5	7,896	21	11,395	31	36,799
1985	13,941	37	1,442	4	8,625	23	13,955	37	37,963
1986	14,459	37	1,517	4	10,356	26	13,106	33	39,438
1987	17,640	42	1,873	4	7,957	19	14,247	34	41,717
1988	18,374	40	2,658	6	10,493	23	14,356	31	45,881
1989	16,038	41	1,617	4	8,857	23	12,810	33	39,322
1990	15,546	42	1,646	4	7,360	20	12,858	34	37,410
1991	16,814	42	2,090	5	7,076	18	13,596	34	39,576
1992	16,489	36	2,109	5	6,878	15	19,715	44	45,191
1993	19,178	36	1,895	4	11,867	22	20,384	38	53,324
1994	20,423	42	2,372	5	8,013	16	17,981	37	48,789
1995	23,442	46	1,907	4	8,437	17	16,917	33	50,703
1996	20,374	45	1,547	3	6,746	15	16,437	36	45,104
1997	14,935	36	1,354	3	6,027	15	19,005	46	41,321
1998	18,996	38	1,950	4	8,501	17	20,381	41	49,828
1999	17,117	35	2,303	5	7,222	15	21,795	45	48,437
2000	15,539	34	1,665	4	5,644	12	22,618	50	45,466
2001	17,364	39	1,845	4	6,149	14	19,336	43	44,694
2002	17,343	38	2,172	5	5,962	13	20,341	44	45,818
2003	26,212	46	2,436	4	6,625	12	21,676	38	56,949
2004	23,898	42	2,712	5	6,421	11	23,448	42	56,479
2005	22,883	43	3,491	7	5,611	11	21,318	40	53,303
2006	20,416	39	2,971	6	5,336	10	24,137	46	52,860
2007	18,064	35	2,202	4	4,489	9	26,224	51	50,979
2008	19,387	38	2,399	5	5,085	10	23,750	47	50,621
2009	18,064	40	2,442	5	3,801	8	20,970	46	45,277
2010	19,342	44	2,891	7	3,897	9	18,207	41	44,337
2011	18,445	43	2,294	5	4,180	10	18,468	43	43,387
2012	18,566	40	2,077	4	4,499	10	21,437	46	46,579
2013	20,096	42	2,371	5	3,911	8	20,912	44	47,290
2014	21,070	44	2,635	5	3,975	8	20,657	43	48,337
2015	20,668	42	2,787	6	4,462	9	21,714	44	49,631
2016	21,579	45	1,694	4	3,509	7	21,502	45	48,284
2017	16,787	39	2,391	6	3,606	8	19,939	47	42,723
2018	16,009	37	2,459	6	3,407	8	20,921	49	42,796

Table 20. Commercial catches of striped marlin and swordfish in the WCPFC Statistical Area north of the equator

YEAR	STRIPED MARLIN		SWORDFISH		TOTAL
	TONNES	%	TONNES	%	
1962	12,165	55	9,857	45	22,022
1963	9,550	51	9,029	49	18,579
1964	17,913	73	6,745	27	24,658
1965	14,194	60	9,377	40	23,571
1966	9,099	46	10,676	54	19,775
1967	11,802	52	10,920	48	22,722
1968	11,903	54	10,083	46	21,986
1969	10,107	51	9,694	49	19,801
1970	7,574	47	8,517	53	16,091
1971	6,572	47	7,290	53	13,862
1972	4,550	41	6,606	59	11,156
1973	7,496	53	6,769	47	14,265
1974	7,044	47	7,816	53	14,860
1975	9,788	48	10,406	52	20,194
1976	6,222	34	11,904	66	18,126
1977	7,021	38	11,643	62	18,664
1978	8,399	41	11,853	59	20,252
1979	6,605	37	11,011	63	17,616
1980	7,702	45	9,326	55	17,028
1981	7,200	42	10,047	58	17,247
1982	5,315	38	8,625	62	13,940
1983	4,948	33	10,133	67	15,081
1984	6,491	40	9,776	60	16,267
1985	7,312	38	11,990	62	19,302
1986	9,294	45	11,168	55	20,462
1987	6,629	36	11,903	64	18,532
1988	8,659	45	10,697	55	19,356
1989	6,510	39	10,262	61	16,772
1990	5,816	36	10,315	64	16,131
1991	5,769	34	11,179	66	16,948
1992	5,521	26	15,817	74	21,338
1993	10,364	37	17,600	63	27,964
1994	6,025	29	14,760	71	20,785
1995	6,550	32	13,962	68	20,512
1996	5,059	29	12,522	71	17,581
1997	4,329	24	13,694	76	18,023
1998	5,679	29	14,073	71	19,752
1999	4,936	25	15,022	75	19,958
2000	4,047	20	16,169	80	20,216
2001	4,331	25	13,060	75	17,391
2002	3,743	22	13,250	78	16,993
2003	3,962	21	14,749	79	18,711
2004	3,970	21	14,674	79	18,644
2005	3,466	20	13,475	80	16,941
2006	3,280	19	14,071	81	17,351
2007	2,701	15	14,840	85	17,541
2008	3,228	20	13,039	80	16,267
2009	2,118	15	12,154	85	14,272
2010	2,476	18	11,015	82	13,491
2011	2,681	18	12,406	82	15,087
2012	3,172	18	14,129	82	17,301
2013	2,801	18	12,860	82	15,661
2014	2,489	17	12,495	83	14,984
2015	3,055	17	14,886	83	17,941
2016	2,310	14	13,782	86	16,092
2017	2,863	17	14,433	83	17,296
2018	2,620	15	15,323	85	17,943

Table 21. Commercial catches of striped marlin and swordfish in the WCPFC Statistical Area south of the equator

YEAR	STRIPED MARLIN		SWORDFISH		TOTAL
	TONNES	%	TONNES	%	
1962	3,042	85	535	15	3,577
1963	2,834	79	753	21	3,587
1964	1,473	79	397	21	1,870
1965	1,890	67	914	33	2,804
1966	2,139	67	1,044	33	3,183
1967	1,345	60	884	40	2,229
1968	1,135	47	1,304	53	2,439
1969	1,018	52	924	48	1,942
1970	1,204	56	956	44	2,160
1971	2,085	52	1,942	48	4,027
1972	2,013	51	1,940	49	3,953
1973	2,065	58	1,506	42	3,571
1974	1,674	46	1,963	54	3,637
1975	1,230	51	1,185	49	2,415
1976	1,438	40	2,189	60	3,627
1977	906	55	741	45	1,647
1978	1,380	61	873	39	2,253
1979	1,512	50	1,535	50	3,047
1980	1,129	40	1,722	60	2,851
1981	1,983	47	2,265	53	4,248
1982	2,219	50	2,232	50	4,451
1983	1,195	47	1,361	53	2,556
1984	1,406	46	1,619	54	3,025
1985	1,313	40	1,966	60	3,279
1986	1,060	35	1,938	65	2,998
1987	1,328	36	2,344	64	3,672
1988	1,833	33	3,655	67	5,488
1989	2,344	48	2,548	52	4,892
1990	1,535	38	2,543	62	4,078
1991	1,288	35	2,417	65	3,705
1992	1,305	25	3,898	75	5,203
1993	1,503	35	2,783	65	4,286
1994	1,988	38	3,230	62	5,218
1995	1,886	39	2,956	61	4,842
1996	1,687	30	3,915	70	5,602
1997	1,698	24	5,311	76	7,009
1998	2,761	30	6,309	70	9,070
1999	2,285	25	6,773	75	9,058
2000	1,597	20	6,449	80	8,046
2001	1,818	22	6,275	78	8,093
2002	2,219	24	7,091	76	9,310
2003	2,663	28	6,927	72	9,590
2004	2,453	23	8,045	77	10,498
2005	1,816	21	6,722	79	8,538
2006	1,795	17	8,925	83	10,720
2007	1,734	14	10,681	86	12,415
2008	1,905	15	10,454	85	12,359
2009	1,863	18	8,350	82	10,213
2010	1,597	17	7,653	83	9,250
2011	1,778	16	9,167	84	10,945
2012	1,765	14	10,468	86	12,233
2013	1,329	12	10,016	88	11,345
2014	1,622	14	10,180	86	11,802
2015	1,559	14	9,207	86	10,766
2016	1,247	13	8,387	87	9,634
2017	1,074	13	7,415	87	8,489
2018	1,029	12	7,239	88	8,268

Table 22. Commercial catches of albacore, striped marlin and swordfish in the South Pacific Ocean

YEAR	ALBACORE		STRIPED MARLIN		SWORDFISH		TOTAL
	TONNES	%	TONNES	%	TONNES	%	
1962	35,219	100	0	0	0	0	35,219
1963	31,111	100	0	0	0	0	31,111
1964	22,824	100	3	0	3	0	22,830
1965	25,455	100	4	0	3	0	25,462
1966	38,661	100	86	0	35	0	38,782
1967	43,957	99	191	0	50	0	44,198
1968	32,382	99	229	1	106	0	32,717
1969	24,805	99	106	0	31	0	24,942
1970	34,925	99	261	1	40	0	35,226
1971	38,630	83	5,237	11	2,451	5	46,318
1972	39,521	85	4,307	9	2,604	6	46,432
1973	47,330	89	3,395	6	2,727	5	53,452
1974	34,049	86	3,042	8	2,556	6	39,647
1975	23,600	84	2,629	9	1,935	7	28,164
1976	29,082	80	3,919	11	3,398	9	36,399
1977	38,740	88	2,797	6	2,305	5	43,842
1978	34,676	86	2,827	7	2,670	7	40,173
1979	27,076	80	3,966	12	2,636	8	33,678
1980	32,541	83	3,533	9	3,322	8	39,396
1981	34,784	80	4,843	11	3,632	8	43,259
1982	30,788	79	4,719	12	3,312	9	38,819
1983	25,092	81	3,153	10	2,766	9	31,011
1984	24,704	83	2,447	8	2,641	9	29,792
1985	32,328	87	2,235	6	2,642	7	37,205
1986	36,590	86	2,722	6	3,293	8	42,605
1987	25,052	75	4,170	13	4,132	12	33,354
1988	37,867	80	3,657	8	5,717	12	47,241
1989	49,076	87	3,985	7	3,627	6	56,688
1990	36,062	81	3,903	9	4,736	11	44,701
1991	35,600	81	3,349	8	4,854	11	43,803
1992	38,668	79	3,202	7	7,186	15	49,056
1993	35,438	80	3,461	8	5,135	12	44,034
1994	42,318	82	4,097	8	5,442	10	51,857
1995	38,467	83	3,305	7	4,779	10	46,551
1996	34,359	79	3,536	8	5,618	13	43,513
1997	39,490	77	3,999	8	7,631	15	51,120
1998	50,371	79	4,506	7	8,621	14	63,498
1999	39,614	78	3,044	6	7,957	16	50,615
2000	47,338	82	2,283	4	8,182	14	57,803
2001	58,344	81	2,847	4	10,401	15	71,592
2002	73,240	79	4,090	4	15,365	17	92,695
2003	62,477	79	4,095	5	12,309	16	78,881
2004	61,871	74	3,481	4	17,766	21	83,118
2005	63,566	78	2,831	3	14,694	18	81,091
2006	62,444	76	2,617	3	17,193	21	82,254
2007	58,591	75	2,333	3	16,917	22	77,841
2008	62,740	76	2,404	3	17,000	21	82,144
2009	82,901	80	2,282	2	18,831	18	104,014
2010	87,292	80	2,128	2	19,679	18	109,099
2011	65,946	73	2,785	3	21,188	24	89,919
2012	88,147	77	2,688	2	23,498	21	114,333
2013	85,023	78	2,354	2	21,656	20	109,033
2014	82,219	77	2,337	2	22,489	21	107,045
2015	82,078	76	2,108	2	23,877	22	108,063
2016	68,263	74	1,775	2	22,603	24	92,641
2017	93,290	80	1,560	1	21,993	19	116,843
2018	68,454	77	1,334	1	19,641	22	89,429