



**COMMISSION
FIFTEENTH REGULAR SESSION**
Honolulu, Hawaii, USA
10 – 14 December 2018

**REFERENCE PAPER FOR ERandEMWG3 RECOMMENDATIONS
FOR AGENDA ITEM 9.4**

**WCPFC15-2018-35
8 December 2018**

Paper by Secretariat

A. Introduction

1. The purpose of this paper is to provide as a quick reference guide to the recommendations of the Third E-reporting and E-monitoring Working Group Meeting (ERandEMWG3). These recommendations will be covered under Agenda Item 9.4, and require the Commission's consideration and decision as needed. A copy of the full ERandEMWG3 Summary Report is provided as [WCPFC15-2018-ERandEMWG3](#).

B. ERandEMWG3 Recommendations for WCPFC15 decision

2. The relevant recommendations of the ERandEMWG3 for WCPFC15 decision with appropriate referencing, are listed below. Copies of relevant attachments from the ERandEMWG3 Summary Report are contained in **Annex 1**.

Update or revision of E-reporting SSPs

- i) ERandEMWG recommended that, subject to SC and TCC endorsement, with respect to maintaining adopted standards, matters of substance (such as major changes or new proposals) shall be considered in a manner consistent with already established processes for new proposals. The Secretariat shall administer minor changes to the SSPs that reflect decisions of the Commission by circulating a draft to all CCMs advising that the change had been made and would come into effect on a date at least consistent with that in the SSPs. CCMs shall be provided the opportunity to raise concerns and if so, the change becomes a matter of substance and will be handled as such.

(ERandEMWG3 para 19)

Standards for E-reporting of high seas transshipment

- ii) ERandEMWG recommended that, subject to SC14 and TCC14 endorsement, the Commission adopt the E-Reporting Standards for transshipment declarations and transshipment notices (WCPFC-2018-ERandEMWG03-03 Attachment 1 and enclosed as Attachment 4).

(ERandEMWG3 para 25, Annex 1)

- iii) If adopted, note that, where transshipment declarations and transshipment notices are submitted electronically to WCPFC, the following information is not required:
- the observers signature;
 - a unique document identifier;
 - for the offloading vessel to supply data on the quantity of product already on board the receiving vessel;
 - for the receiving vessel to supply data on the fishing gear that the offloading vessel used to take the fish; and
 - for the receiving vessel to supply data on the quantity of product to be transhipped.
- (ERandEMWG3 para 26)*
- iv) If adopted, recommend that the Commission:
- a. add a footnote to Annex I of CMM 2009-06 that says “CCMs shall submit information required in Annex I or in accordance with E-reporting Standards for transshipment declarations and transshipment notices”; and
 - b. add a footnote to Annex III of CMM 2009-06 that says “CCMs shall submit information required in Annex III or in accordance with E-reporting Standards for transshipment declarations and transshipment notices”.
- (ERandEMWG3 para 27)*

E-monitoring concept paper

- v) The ERandEMWG noted the results from WCPFC-2018-ERandEMWG-IP04 examining scientific application of the longline ROP minimum data standard data fields. ERandEM WG recommended that SC and TCC consider if a Commission wide data needs analysis and associated data collection and verification methods was needed. *(ERandEMWG3 para 67)*
- vi) The ERandEMWG noted the strength of the ROP as a data collection and verification programme that comes from its independence and impartiality, and recommended that any WCPFC E-Monitoring Programme should also have this similar basis. *(ERandEMWG3 para 68)*
- vii) The ERandEMWG recommended that the Commission note that the approach outlined in the concept paper could be used as a general framework for progressing issues relating to implementation of E-Monitoring. The ERandEMWG further noted the Chair would update the concept paper based on discussions at ERandEMWG3, with particular focus on objectives and scope, and would circulate intersessionally to ERandEMWG participants with the possibility of using TCC14 for informal consultations. *(ERandEMWG3 para 79)*
- viii) The ERandEMWG recommends that the Commission agree to prioritising E-monitoring in areas where independent data collection and verification is currently low and asked SC14 and TCC14 for advice on priority areas. *(ERandEMWG3 para 80)*

Copies of relevant ERandEMWG3 Summary Report Attachments

Attachment 4 Draft E-reporting Standards for Transshipment Declarations and Transshipment Notices



**DRAFT E-REPORTING STANDARDS FOR TRANSHIPMENT
DECLARATIONS AND TRANSHIPMENT NOTICES**

Western and Central Pacific Fisheries Commission (WCPFC)

DRAFT E-REPORTING STANDARDS FOR TRANSHIPMENT DECLARATIONS AND TRANSHIPMENT NOTICES

13 July 2018

<i>CURRENT VERSION:</i>	<i>3.0</i>
<i>DATE:</i>	<i>13 July 2018</i>
<i>STATUS:</i>	<i>Draft – yet to be approved</i>

<i>Version Number</i>	<i>Date</i>	<i>Brief Description of Changes</i>
3.0	July 2018 – presented to ERandEMWG3	Introduction shortened to remove repetition of the information also contained in the covering note.
		Amended section 3.b, 4.b, 5.b & 6.b; so that the reporting CCM would be transmitted in the format of a CCM WCPFC alpha-2 two-letter Country Code.
		Amended section 3.b, 4.b, 5.b & 6.b; so that the time zone would be transmitted for transshipment dates.
		Amended section 7 to replace XLXS with FLUX.
		Amended Appendix 2: to include the reporting of time zones as hours offset from UTC time.
		Amended Appendix 3: removed “within convention area but not within an EEZ and not on the high seas”, added “WCPFC/IATTC Overlap Area”, removed all non-WCPFC RFMO areas, removed “other not listed above”, added “outside the Convention Area”.
		Amended Appendix 4: added “Filletted”.
2.0	November 2017 – presented to WCPFC13	Amended section 3.b, 4.b & 5.b; so that the quantity of product transhipped would be transmitted as metric tonnes.
		Amended section 1 to remove the reference to the quantity of product to be transhipped being transmitted as kg.
		Amended the following sections to remove the requirement to transmit the vessel’s VID and substitute a requirement to transmit the vessel’s WIN: 1, 3a, 3b, 3c, 3d, 4a, 4b, 4c, 4d, 5a, 5b, 5c, 5d, 6a, 6b, 6c & 6d.
		Added the following sentence to section 1 – “Before the e-reporting of Transshipment Declarations and Transshipment Notices become mandatory, there should be a further opportunity for CCMs to provide feedback on these standards and for improvements to be made.”
		Added the following sentence to section 1 – “These are standards for the transmission of data from vessels to the WCPFC Secretariat. They are not intended to define the format in which the Secretariat will store this data.”
		Deleted para 4.d.5
1.0	September 2017 – presented to TCC13	The original draft standards presented to TCC13.

CONTENTS

1. INTRODUCTION	5
2. STANDARDS FOR THE E-REPORTING OF TRANSHIPMENT INFORMATION	5
3. OFFLOADING VESSEL TRANSHIPMENT DECLARATIONS	6
3.a Standards for the structure of new or amended e-reports	6
3.b Standards for the records and fields to be provided	7
3.c Standards for cancelling a previously submitted e-report	10
3.d Notes.....	11
4. RECEIVING VESSEL TRANSHIPMENT DECLARATIONS.....	12
4.a Standards for the structure of new or amended e-reports	12
4.b Standards for the records and fields to be provided	13
4.c Standards for cancelling a previously submitted e-report	17
4.d Notes.....	18
5. OFFLOADING VESSEL TRANSHIPMENT NOTICES.....	19
5.a Standards for the structure of new or amended e-reports	19
5.b Standards for the records and fields to be provided	20
5.c Standards for cancelling a previous e-report	23
6. RECEIVING VESSEL TRANSHIPMENT NOTICES.....	24
6.a Standards for the structure of new or amended e-reports	24
6.b Standards for the records and fields to be provided	24
6.c Standards for cancelling a previous e-report	27
6.d Notes.....	27
7. STANDARDS FOR THE TRANSMISSION OF TRANSHIPMENT E-REPORTS.....	28
APPENDICES	29
APPENDIX 1 – TRANSHIPMENT FISHING GEAR CODES	29
APPENDIX 2 – DATE/TIME FORMAT	30
APPENDIX 3 – TRANSHIPMENT LOCATION CODES	31
APPENDIX 4 – TRANSHIPMENT PROCESSED STATE CODES	32
APPENDIX 5 – TRANSHIPMENT RFMO AREA CODES	33

1. INTRODUCTION

This document sets out the standards for the provision of Transshipment Declarations and Transshipment Notices to the WCPFC through the mechanism of electronic reporting (e-reporting). CMM2009-06 defines the requirements for CCMs to supply Transshipment Declarations and Transshipment Notices to the Executive Director; and documents the information to be included in these.

E-reporting has the potential to:

- Improve the quality of information received, because e-reporting makes it possible to do data quality checks at the source of the data
- Improve the timeliness of information availability, because there is no delay waiting for data entry
- Reduce costs for the Commission, by reducing the resources that the Commission must commit to data entry.

Standards are a critical element of any E-reporting infrastructure. For E-reporting to function efficiently, the data sent by the transmitting computer must be in the exact format that the receiving computer is expecting. Where this does not occur, human intervention will be required to re-format the data before it can be loaded.

Note that:

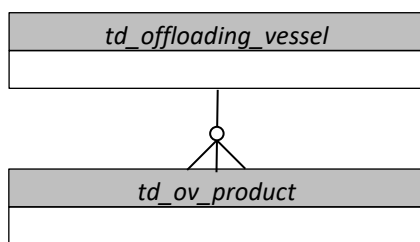
- a) This document includes standards for (1) initially submitting a transshipment declaration or notice and (2) subsequently amending that declaration or notice and (3) cancelling a previous declaration or notice.
- b) Generally, the fields of information specified in these standards are the same as those documented in Annex I and Annex III of CMM2009-06. However, some additional information is required to enable the efficient operation of e-reporting. These instances are clearly identified, and the rationale behind each is documented in the standards that follow. In most cases this additional information could be generated automatically by the sender's computer. These standards do not request any additional information of an operational nature.
- c) One of the additional items of information requested is a contact email address for the submitter. Upon the receipt of a transshipment declaration or notice, the WCPFC would send a confirmation email to the contact email address provided. The reporting CCM is to be declared by the submitter.
- d) Under these standards the collection of some operational data, as required by Annex I and Annex III of CMM2009-06, is waived in the case of information submitted via e-reporting. This is specifically the case where E-reporting offers the opportunity to collect equivalent information without double data entry. These proposals are clearly documented in the sections 3.d, 4.d and 6.d.

2. STANDARDS FOR THE E-REPORTING OF TRANSHIPMENT INFORMATION

- a) Where a vessel, agent or CCM elects to use e-reporting to comply with paragraph 10 of CMM2009-06; the declaration for the offloading vessel must comply with the standards contained in sections 3.a, 3.b, 3.c and 7 of this document.
- b) Where a vessel, agent or CCM elects to use e-reporting to comply with paragraph 10 of CMM2009-06; the declaration for the receiving vessel must comply with the standards contained in sections 4.a, 4.b, 4.c and 7 of this document.
- c) Where a vessel, agent or CCM elects to use e-reporting to comply with paragraph 35 of CMM2009-06; the notice for the offloading vessel must comply with the standards contained in sections 5.a, 5.b, 5.c and 7 of this document.
- d) Where a vessel, agent or CCM elects to use e-reporting to comply with paragraph 35 of CMM2009-06; the notice for the receiving vessel must comply with the standards contained in sections 6.a, 6.b, 6.c and 7 of this document.

3. OFFLOADING VESSEL TRANSHIPMENT DECLARATIONS

3.a Standards for the structure of new or amended e-reports



For each Offloading Vessel Transshipment Declaration, there must be:

- one *td_offloading_vessel* record
- one *td_ov_product* record for each combination of Species / Processed State / Fresh or Frozen / Location of Catch product that was transhipped. For example, the information shown below would be represented by five *td_ov_product* records.

Species	Processed State	Fresh or Frozen	Location of Catch	Quantity
ALB	Gutted & Headed	Fresh	Cook Islands EEZ	1.250t
ALB	Gilled, Gutted & Tailed	Fresh	Cook Islands EEZ	0.525t
ALB	Gilled, Gutted & Tailed	Frozen	Cook Islands EEZ	4.829t
ALB	Gilled, Gutted & Tailed	Frozen	WCPFC High Seas	1.175t
BET	Gilled, Gutted & Tailed	Frozen	WCPFC High Seas	3.678t

Any Offloading Vessel Transshipment Declaration must be able to be uniquely identified by concatenating:

- the vessel's WCPFC WIN number; and
- the date and time that the declaration was submitted.

The *td_ov_product* records for a single transshipment, must be able to be logically linked to the *td_offloading_vessel* record for the same transshipment, using the concatenated vessel's WIN number and declaration datetime.

3.b Standards for the records and fields to be provided

RECORD NAME: <i>td_offloading_vessel</i>			
All of the fields listed below are required in each record. No field may contain missing or null values.			
Information Required	Field Name	Field Format	Notes
The Offloading Vessel's WCPFC Identification Number (WIN)	<i>off_win</i>	VARCHAR(16) Example: <i>ABC1234</i>	Reference: CMM2009-06, annex 1, para 2. Validation: Must be a valid WIN, on the date of transshipment, in the WCPFC Record of Fishing Vessels.
The Offloading Vessel's Name	<i>off_vessel</i>	VARCHAR(64) Example: <i>Lucky Fisher III</i>	Reference: CMM2009-06, annex 1, para 2. Validation: Must be the vessel name which, in the WCPFC Record of Fishing Vessels, corresponds to the <i>off_win</i> provided.
The Receiving Vessel's WCPFC Identification Number (WIN)	<i>rec_win</i>	VARCHAR(16) Example: <i>DEF5678</i>	Reference: CMM2009-06, annex 1, para 3. Validation: Must be a valid WIN, on the date of transshipment, in the WCPFC Record of Fishing Vessels.
The Receiving Vessel's name	<i>rec_vessel</i>	VARCHAR(64) Example: <i>Super Hauler 2</i>	Reference: CMM2009-06, annex 1, para 3. Validation: Must be the vessel name which, in the WCPFC Record of Fishing Vessels, corresponds to the <i>rec_win</i> provided.
The fishing gear used to take the fish	<i>fishing_gear</i>	VARCHAR(16), Uppercase If more than one type of gear was used, then separate the list using dashes. Example: <i>LLS-LLD</i>	Reference: CMM2009-06, annex 1, para 4. Validation: Must be a valid fishing gear code as found in Appendix 1, or list of fishing gear codes separated by dashes.
The date on which the transshipment started	<i>trans_date</i>	VARCHAR(22) ISO8601, – UTC date or local datetime. See Appendix 2. Example: <i>2016-11-25Z</i> <i>2016-11-25T00:00+0700</i>	Reference: CMM2009-06, annex 1, para 9. Validation: Must be a date in the recent past. If a UTC date is used then this must include the "Z" suffix. If a local datetime is used then this must include the hours offset from UTC time as the suffix.
The location at which the transshipment started	<i>trans_loc</i>	VARCHAR(13), Uppercase Example: <i>WCPFC-HS</i>	Reference: CMM2009-06, annex 1, para 9. Validation: Must be a valid location code as found in Appendix 3.

The latitude at which the transshipment started	<i>trans_latitude</i>	CHAR(5) ISO6709, to the nearest 0.1 degree ±DD.D Example for Pohnpei Airport: +07.0	Reference: CMM2009-06, annex 1, para 9. Validation: Must be a valid latitude.
The longitude at which the transshipment started	<i>trans_longitude</i>	CHAR(6) ISO6709, to the nearest 0.1 degree ±DDD.D Example for Pohnpei Airport: +158.2	Reference: CMM2009-06, annex 1, para 9. Validation: (1) Must be a valid longitude and (2) Should, when considered along with the <i>trans_latitude</i> , represent a location that is at sea and within the <i>trans_loc</i> .
The name of the WCPFC observer	<i>obs_name</i>	VARCHAR(64)	Reference: CMM2009-06, annex 1, para 10. Validation: Must not be blank. Use “No Observer” where no observer was present.
Whether this is a new transshipment declaration, or an amendment to a previous transshipment declaration	<i>trans_id</i>	CHAR(16) Example: <i>New-Transshipment</i>	NEW - Rationale: Needed to allow already submitted transshipment declarations to be amended. Validation: In the case of new transshipment declarations, must be “New-Transshipment”. In the case of amendments to a previous transshipment declaration, must be the Transshipment ID that the WCPFC sent to the contact email address when confirming receipt of the declaration.
The date and time that the declaration was submitted	<i>submit_time</i>	VARCHAR(22) ISO 8601 – Date and time without seconds. See Appendix 2. Example:2016-11-25T14:46+11:00	NEW - Rationale: Needed (along with the <i>off_win</i> field) to allow <i>td_offloading_vessel</i> records and <i>td_ov_product</i> records to be correctly linked. Validation: Must be a recent earlier date/time, including the hours offset from UTC time. Note: Could be automatically generated by the submitters computer system at the moment that the declaration was sent.
The number of transhipped product records that are being submitted	<i>product_count</i>	INTEGER Example: 25 Must be 0 if no product was transhipped.	NEW - Rationale: Needed to ensure that product transhipped records have not been lost or duplicated in transmission. Note: Could be automatically generated by the submitters computer system at the moment that the declaration was sent.
The CCM responsible for reporting this transshipment	<i>reporting_ccm</i>	CHAR(2) Example: VU	NEW – A two letter code representing the CCM responsible for reporting the transshipment. Validation: Must be a valid CCM WCPFC alpha-2 two-letter Country Code.

A contact email address	<i>contact_email</i>	VARCHAR(50) Example: <i>a.fisher@gmail.com</i>	NEW - Rationale: An email address that WCPFC should use to (1) confirm receipt of this declaration and (2) contact if there are any problems with the quality / completeness of this declaration. Validation: Must be a valid email address.
-------------------------	----------------------	--	--

RECORD NAME: td_ov_product			
All of the fields listed below are required in each record. No field may contain missing or null values.			
Information Required	Field Name	Field Format	Notes
The Offloading Vessel's WCPFC Identification Number (WIN)	<i>off_win</i>	VARCHAR(16) Example: <i>ABC1234</i>	DUPLICATE - Rationale: Needed (along with the <i>submit_time</i> field) to allow <i>td_offloading_vessel</i> records and <i>td_ov_product</i> records to be correctly linked. Validation: Must have a matching entry in the <i>td_offloading_vessel</i> record.
The date and time that the declaration was submitted	<i>submit_time</i>	VARCHAR(22) ISO 8601 – Date and time without seconds. See Appendix 2. Example: <i>2016-11-25T14:46+11:00</i>	NEW & DUPLICATE - Rationale: Needed (along with the <i>off_win</i> field) to allow <i>td_offloading_vessel</i> records and <i>td_ov_product</i> records to be correctly linked. Validation: Must have a matching entry in the <i>td_offloading_vessel</i> record.
The species that was transhipped	<i>species</i>	CHAR(3), Uppercase The three-letter FAO species code for the species. Example: <i>SKJ</i>	Reference: CMM2009-06, annex 1, para 5. Validation: Must be a valid three-letter FAO species code - www.fao.org/fishery/collection/asfis/en
The processed state of the transhipped fish	<i>processed_state</i>	CHAR(2), Uppercase Example: <i>WH</i>	Reference: CMM2009-06, annex 1, para 5. Validation: Must be a valid processed state code as found in Appendix 4.
Whether the transhipped fish was fresh or frozen	<i>fresh_frozen</i>	VARCHAR(6), containing the string "Fresh" or "Frozen"	Reference: CMM2009-06, annex 1, para 6.

The geographic location of the catch	<i>catch_loc</i>	VARCHAR(13), Uppercase Example: <i>WCPFC-HS</i>	Reference: CMM2009-06, annex 1, para 8. Validation: Must be a valid location code as found in Appendix 3.
The quantity of the product that was transhipped	<i>quantity_product</i>	FLOAT Example: <i>3.92</i>	Reference: CMM2009-06, annex 1, para 5. The weight of product transhipped, measured in metric tonnes.

3.c Standards for cancelling a previously submitted e-report

<i>td_ov_cancel</i>

It will be possible to use e-reporting to cancel a previously submitted Offloading Vessel Transhipment Declaration. For each Offloading Vessel Transhipment Declaration cancellation, there must be one *td_ov_cancel* record.

RECORD NAME: <i>td_ov_cancel</i>			
All of the fields listed below are required in each record. No field may contain missing or null values.			
Information Required	Field Name	Field Format	Notes
The Offloading Vessel's WCPFC Identification Number (WIN)	<i>off_win</i>	VARCHAR(16) Example: <i>ABC1234</i>	Reference: CMM2009-06, annex 1, para 2. Validation: Must be a valid WIN, on the date of transhipment, in the WCPFC Record of Fishing Vessels.
The WCPFC Transhipment ID for the Offloading Vessel Transhipment Declaration that is being cancelled	<i>trans_id</i>	CHAR(16) Example: <i>HPOU6685WDXZ2309</i>	Rationale: Needed to allow already submitted transhipment declarations to be amended. Validation: Must be a valid WCPFC Transhipment ID, for a transhipment declaration that had previously been made by the offloading vessel. Note: This ID will have been sent by the WCPFC to the contact email address when the Transhipment Declaration was first submitted.
A contact email address	<i>contact_email</i>	VARCHAR(50) Example: <i>a.fisher@gmail.com</i>	Rationale: An email address that WCPFC should use to (1) confirm receipt of this cancellation and (2) contact if there are any problems with the quality / completeness of this cancellation. Validation: Must be a valid email address.

3.d Notes

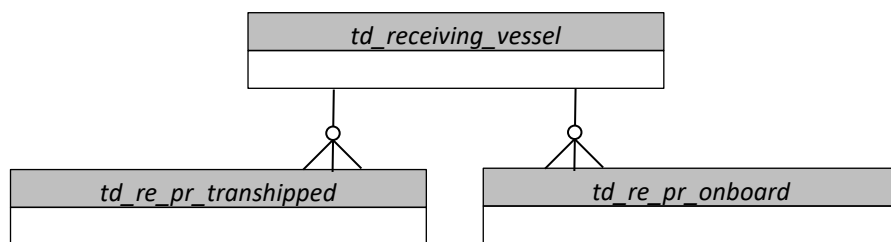
For the e-reporting of Transshipment Declarations by Offloading Vessels:

- the requirement for the offloading vessel to supply a “Unique Document Identifier” (CMM2009-06, annex 1, para 1) would be waived.
- the requirement for the offloading vessel to supply the signature of a WCPFC observer (CMM2009-06, annex 1, para 10) would be waived.
- the requirement for the offloading vessel to supply the quantity of product already on board the receiving vessel (CMM2009-06, annex 1, para 11) would be waived. The receiving vessel would still be required to supply this information.

DRAFT

4. RECEIVING VESSEL TRANSHIPMENT DECLARATIONS

4.a Standards for the structure of new or amended e-reports



For each Receiving Vessel Transshipment Declaration, there must be:

- one *td_receiving_vessel* record
- one *td_re_pr_transhipped* record for each combination of Species / Processed State / Fresh or Frozen product that was transhipped. For example, the information shown below would be represented by four *td_re_pr_transhipped* records.

Species	Processed State	Fresh or Frozen	Quantity
ALB	Gutted & Headed	Fresh	1.25t
ALB	Gilled, Gutted & Tailed	Fresh	0.525t
ALB	Gilled, Gutted & Tailed	Frozen	6.004t
BET	Gilled, Gutted & Tailed	Frozen	3.678t

- one *td_re_pr_onboard* record for each combination of Species / RFMO Of Origin product that was on-board the receiving vessel before the transshipment started. For example, the information shown below would be represented by three *td_re_pr_onboard* records.

Species	RFMO	Quantity
ALB	WCPFC	11.201t
ALB	IOTC	3.02t
BET	IOTC	3.678t

Note on interpreting the CMM - CMM2009-06, annex 1, para 11 requires receiving vessels to report “the quantity of product already on board the receiving vessel”, but is silent on whether the processed state of this product is required. This is open to two interpretations (1) the earlier definition of “product” contained in CMM2009-06, annex 1, para 5 applies or (2) no information on product state is required. In drafting this standard the second interpretation has been used, but this should be clarified before the standard is finalised.

Any Receiving Vessel Transshipment Declaration must be able to be uniquely identified by concatenating:

- the vessel’s WCPFC WIN number; and
- the date and time that the declaration was submitted.

The *td_re_pr_transhipped* and *td_re_pr_onboard* records for a single transshipment, must be able to be logically linked to the *td_receiving_vessel* record for the same transshipment, using the concatenated receiving vessel’s WIN number and declaration datetime.

4.b Standards for the records and fields to be provided

RECORD NAME: <i>td_receiving_vessel</i>			
All of the fields listed below are required in each record. No field may contain missing or null values.			
Information Required	Field Name	Field Format	Notes
The Offloading Vessel's WCPFC Identification Number (WIN)	<i>off_win</i>	VARCHAR(16) Example: <i>ABC1234</i>	Reference: CMM2009-06, annex 1, para 2. Validation: Must be a valid WIN, on the date of transshipment, in the WCPFC Record of Fishing Vessels.
The Offloading Vessel's Name	<i>off_vessel</i>	VARCHAR(64) Example: <i>Lucky Fisher III</i>	Reference: CMM2009-06, annex 1, para 2. Validation: Must be the vessel name which, in the WCPFC Record of Fishing Vessels, corresponds to the <i>off_win</i> provided.
The Receiving Vessel's WCPFC Identification Number (WIN)	<i>rec_win</i>	VARCHAR(16) Example: <i>DEF5678</i>	Reference: CMM2009-06, annex 1, para 3. Validation: Must be a valid WIN, on the date of transshipment, in the WCPFC Record of Fishing Vessels.
The Receiving Vessel's name	<i>rec_vessel</i>	VARCHAR(64) Example: <i>Super Hauler 2</i>	Reference: CMM2009-06, annex 1, para 3. Validation: Must be the vessel name which, in the WCPFC Record of Fishing Vessels, corresponds to the <i>rec_win</i> provided.
The date on which the transshipment started	<i>trans_date</i>	VARCHAR(22) ISO8601, – UTC date or local datetime. See Appendix 2. Example: <i>2016-11-25Z</i> <i>2016-11-25T00:00+0700</i>	Reference: CMM2009-06, annex 1, para 9. Validation: Must be a date in the recent past. If a UTC date is used then this must include the "Z" suffix. If a local datetime is used then this must include the hours offset from UTC time as the suffix.
The location at which the transshipment started	<i>trans_loc</i>	VARCHAR(13), Uppercase Example: <i>WCPFC-HS</i>	Reference: CMM2009-06, annex 1, para 9. Validation: Must be a valid location code as found in Appendix 3.
The latitude at which the transshipment started	<i>trans_latitude</i>	CHAR(5) ISO6709, to the nearest 0.1 degree ±DD.D Example for Pohnpei Airport: <i>+07.0</i>	Reference: CMM2009-06, annex 1, para 9. Validation: Must be a valid latitude.

The longitude at which the transshipment started	<i>trans_longitude</i>	CHAR(6) ISO6709, to the nearest 0.1 degree ±DDD.D Example for Pohnpei Airport: +158.2	Reference: CMM2009-06, annex 1, para 9. Validation: (1) Must be a valid longitude and (2) Should, when considered along with the <i>trans_latitude</i> , represent a location that is at sea and within the <i>trans_loc</i> .
The name of the WCPFC observer	<i>obs_name</i>	VARCHAR(64)	Reference: CMM2009-06, annex 1, para 10. Validation: Must not be blank. Use “No Observer” where no observer was present.
Whether this is a new transshipment declaration, or an amendment to a previous transshipment declaration	<i>trans_id</i>	CHAR(16) Example: <i>New-Transshipment</i>	NEW - Rationale: Needed to allow already submitted transshipment declarations to be amended. Validation: In the case of new transshipment declarations, must be “New-Transshipment”. In the case of amendments to a previous transshipment declaration, must be the Transshipment ID that the WCPFC sent to the contact email address when confirming receipt of the declaration.
The date and time that the declaration was submitted	<i>submit_time</i>	VARCHAR(22) ISO 8601 – Date and time without seconds. See Appendix 2. Example: <i>2016-11-25T14:46+11:00</i>	NEW - Rationale: Needed (along with the <i>off_winfield</i>) to allow <i>td_receiving_vessel</i> , <i>td_re_pr_transhipped</i> and <i>td_re_pr_onboard</i> records to be correctly linked. Validation: Must be a recent earlier date/time, including the hours offset from UTC time. Note: Could be automatically generated by the submitters computer system at the moment that the declaration was sent.
The number of transhipped product records that are being submitted	<i>product_count</i>	INTEGER Example: 25 Must be 0 if no product was transhipped.	NEW - Rationale: Needed to ensure that product transhipped records have not been lost or duplicated in transmission. Note: Could be automatically generated by the submitters computer system at the moment that the declaration was sent.
The number of product already on-board records that are being submitted	<i>onboard_count</i>	INTEGER Example: 49 Must be 0 if no product was on-board before the transshipment started.	NEW - Rationale: Needed to ensure that product already on-board records have not been lost or duplicated in transmission. Note: Could be automatically generated by the submitters computer system at the moment that the declaration was sent.
The CCM responsible for reporting this transshipment	<i>reporting_ccm</i>	CHAR(2) Example: VU	NEW – A two letter code representing the CCM responsible for reporting the transshipment. Validation: Must be a valid CCM WCPFC alpha-2 two-letter Country Code.

A contact email address	<i>contact_email</i>	VARCHAR(50) Example: <i>a.carrier@gmail.com</i>	NEW - Rationale: An email address that WCPFC should use to (1) confirm receipt of this declaration and (2) contact if there are any problems with the quality / completeness of this declaration. Validation: Must be a valid email address.
-------------------------	----------------------	---	--

RECORD NAME: *td_re_pr_transhipped*

All of the fields listed below are required in each record. No field may be missing or null.

Information Required	Field Name	Field Format	Notes
The Receiving Vessel's WCPFC Identification Number (WIN)	<i>rec_win</i>	VARCHAR(16) Example: <i>DEF5678</i>	Reference: CMM2009-06, annex 1, para 3. Validation: Must be a valid WIN, on the date of transshipment, in the WCPFC Record of Fishing Vessels.
The date and time that the declaration was submitted	<i>submit_time</i>	VARCHAR(22) ISO 8601 – Date and time without seconds. See Appendix 2. Example: <i>2016-11-25T14:46+11:00</i>	NEW & DUPLICATE - Rationale: Needed (along with the <i>rec_win</i> field) to allow <i>td_receiving_vessel</i> records and <i>td_re_pr_transhipped</i> records to be correctly linked. Validation: Must have a matching entry in the <i>td_receiving_vessel</i> record.
The species that was transhipped	<i>species</i>	CHAR(3), Uppercase The three-letter FAO species code for the species. Example: <i>SKJ</i>	Reference: CMM2009-06, annex 1, para 5. Validation: Must be a valid three-letter FAO species code - www.fao.org/fishery/collection/asfis/en
The processed state of the transhipped fish	<i>processed_state</i>	CHAR(2), Uppercase Example: <i>WH</i>	Reference: CMM2009-06, annex 1, para 5. Validation: Must be a valid processed state code as found in Appendix 4.
Whether the transhipped fish was fresh or frozen	<i>fresh_frozen</i>	VARCHAR(6), containing the string "Fresh" or "Frozen"	Reference: CMM2009-06, annex 1, para 6.
The quantity of the product that was transhipped	<i>quantity_product</i>	FLOAT Example: <i>3.92</i>	Reference: CMM2009-06, annex 1, para 5. The weight of product transhipped, measured in metric tonnes.

RECORD NAME: *td_re_pr_onboard*

All of the fields listed below are required in each record. No field may be missing or null.

Information Required	Field Name	Field Format	Notes
The Receiving Vessel's WCPFC Identification Number (WIN)	<i>rec_win</i>	VARCHAR(16) Example: <i>DEF5678</i>	Reference: CMM2009-06, annex 1, para 3. Validation: Must be a valid WIN, on the date of transshipment, in the WCPFC Record of Fishing Vessels.
The date and time that the declaration was submitted	<i>submit_time</i>	VARCHAR(22) ISO 8601 – Date and time without seconds. See Appendix 2. Example: <i>2016-11-25T14:46+11:00</i>	NEW & DUPLICATE - Rationale: Needed (along with the <i>rec_win</i> field) to allow <i>td_receiving_vessel</i> records and <i>td_ov_product</i> records to be correctly linked. Validation: Must have a matching entry in the <i>td_receiving_vessel</i> record.
The species of the product that was on-board before the transshipment started	<i>species</i>	CHAR(3), Uppercase The three-letter FAO species code for the species. Example: <i>SKJ</i>	Reference: CMM2009-06, annex 1, para 11. Validation: Must be a valid three-letter FAO species code - www.fao.org/fishery/collection/asfis/en
The geographic origin (RFMO) of the product that was onboard before the transshipment started	<i>origin_loc</i>	VARCHAR(13), Uppercase Example: <i>WCPFC</i>	Reference: CMM2009-06, annex 1, para 11. Validation: Must be a valid RFMO Area code as found in Appendix 5.
The quantity of the product that was on-board before the transshipment started	<i>quantity_product</i>	FLOAT Example: <i>3.92</i>	Reference: CMM2009-06, annex 1, para 11. The weight of product on-board, measured in metric tonnes.

4.c Standards for cancelling a previously submitted e-report

<i>td_re_cancel</i>

It will be possible to use e-reporting to cancel a previously submitted Receiving Vessel Transhipment Declaration. For each Receiving Vessel Transhipment Declaration cancellation, there must be one *td_re_cancel* record.

RECORD NAME: <i>td_re_cancel</i> All of the fields listed below are required in each record. No field may contain missing or null values.			
Information Required	Field Name	Field Format	Notes
The Receiving Vessel's WCPFC Identification Number (WIN)	<i>rec_win</i>	VARCHAR(16) Example: <i>DEF5678</i>	Reference: CMM2009-06, annex 1, para 3. Validation: Must be a valid WIN, on the date of transhipment, in the WCPFC Record of Fishing Vessels.
The WCPFC Transhipment ID for the Receiving Vessel Transhipment Declaration that is being cancelled	<i>trans_id</i>	CHAR(16) Example: <i>FGYH7892ELPU3087</i>	Rationale: Needed to allow already submitted transhipment declarations to be amended. Validation: Must be a valid WCPFC Transhipment ID, for a transhipment declaration that had previously been made by the receiving vessel. Note: Will have been sent by the WCPFC to the contact email address when the Transhipment Declaration was first submitted.
A contact email address	<i>contact_email</i>	VARCHAR(50) Example: <i>a.carrier@gmail.com</i>	Rationale: An email address that WCPFC should use to (1) confirm receipt of this cancellation and (2) contact if there are any problems with the quality / completeness of this cancellation. Validation: Must be a valid email address.

4.d Notes

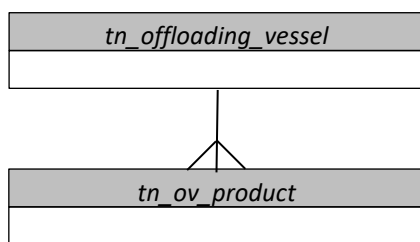
For the e-reporting of Transshipment Declarations by Receiving Vessels:

1. the requirement for the receiving vessel to supply a “Unique Document Identifier” (CMM2009-06, annex 1, para 1) would be waived.
2. the requirement for the receiving vessel to supply the signature of a WCPFC observer (CMM2009-06, annex 1, para 10) would be waived.
3. the requirement for the receiving vessel to supply the fishing gear used to take the fish (CMM2009-06, annex 1, para 4) would be waived. The offloading vessel would still be required to supply this information.

DRAFT

5. OFFLOADING VESSEL TRANSHIPMENT NOTICES

5.a Standards for the structure of new or amended e-reports



For each Offloading Vessel Transhipment Notice, there must be:

- one *tn_offloading_vessel* record
- one *tn_ov_product* record for each combination of Species / Processed State / Fresh or Frozen / Location of Catch product that will be transhipped. For example, the information shown below would be represented by four *tn_ov_product* records.

Species	Processed State	Location of Catch	Quantity
ALB	Gutted & Headed	Cook Islands EEZ	1.25t
ALB	Gilled, Gutted & Tailed	Cook Islands EEZ	4.829t
ALB	Gilled, Gutted & Tailed	WCPFC High Seas	1.175t
BET	Gilled, Gutted & Tailed	WCPFC High Seas	3.678t

Any Offloading Vessel Transhipment Notice must be able to be uniquely identified by concatenating:

- the vessel's WCPFC WIN number; and
- the date and time that the notice was submitted.

The *tn_ov_product* records for a single transhipment must be able to be logically linked to the *tn_offloading_vessel* record for the same transhipment, using the concatenated offloading vessel's WIN number and date / time that the notice was submitted.

5.b Standards for the records and fields to be provided

RECORD NAME: <i>tn_offloading_vessel</i>			
All of the fields listed below are required in each record. No field may contain missing or null values.			
Information Required	Field Name	Field Format	Notes
The Offloading Vessel's WCPFC Identification Number (WIN)	<i>off_win</i>	VARCHAR(16) Example: <i>ABC1234</i>	Reference: CMM2009-06, annex 3, para 1. Validation: Must be a valid WIN, on the date of transshipment, in the WCPFC Record of Fishing Vessels.
The Offloading Vessel's Name	<i>off_vessel</i>	VARCHAR(64) Example: <i>Lucky Fisher III</i>	Reference: CMM2009-06, annex 3, para 1. Validation: Must be the vessel name which, in the WCPFC Record of Fishing Vessels, corresponds to the <i>off_win</i> provided.
The Receiving Vessel's WCPFC Identification Number (WIN)	<i>rec_win</i>	VARCHAR(16) Example: <i>DEF5678</i>	Reference: CMM2009-06, annex 3, para 2. Validation: Must be a valid WIN, on the date of transshipment, in the WCPFC Record of Fishing Vessels.
The Receiving Vessel's name	<i>rec_vessel</i>	VARCHAR(64) Example: <i>Super Hauler 2</i>	Reference: CMM2009-06, annex 3, para 2. Validation: Must be the vessel name which, in the WCPFC Record of Fishing Vessels, corresponds to the <i>rec_win</i> provided.
The date on which the transshipment is proposed to start	<i>prop_date</i>	VARCHAR(22) ISO8601, – UTC date or local datetime. See Appendix 2. Example: <i>2016-11-25Z</i> <i>2016-11-25T00:00+0700</i>	Reference: CMM2009-06, annex 1, para 9. Validation: Must be a date in the recent past. If a UTC date is used then this must include the "Z" suffix. If a local datetime is used then this must include the hours offset from UTC time as the suffix.
The location at which the transshipment is proposed to start	<i>prop_loc</i>	VARCHAR(13), Uppercase Example: <i>WCPFC-HS</i>	Reference: CMM2009-06, annex 3, para 5. Validation: Must be a valid location code as found in Appendix 3.
The latitude at which the transshipment is proposed to start	<i>prop_latitude</i>	CHAR(5) ISO6709, to the nearest 0.1 degree ±DD.D Example for Pohnpei Airport: <i>+07.0</i>	Reference: CMM2009-06, annex 3, para 5. Validation: Must be a valid latitude.

The longitude at which the transshipment is proposed to start	<i>prop_longitude</i>	CHAR(6) ISO6709, to the nearest 0.1 degree ±DDD.D Example for Pohnpei Airport: +158.2	Reference: CMM2009-06, annex 3, para 5. Validation: (1) Must be a valid longitude and (2) should, when considered along with the <i>prop_latitude</i> , represent a location that is at sea and within the <i>prop_loc</i> .
Whether this is a new transshipment notice, or an amendment to a previous transshipment declaration	<i>trans_id</i>	CHAR(16) Example: <i>New-Transshipment</i>	NEW - Rationale: Needed to allow already submitted transshipment declarations to be amended. Validation: In the case of new transshipment notices, must be "New-Transshipment". In the case of amendments to a previous transshipment notice, must be the Transshipment ID that the WCPFC sent to the contact email address when confirming receipt of the transshipment notice.
The date and time that the notice was submitted	<i>submit_time</i>	VARCHAR(22) ISO 8601 – Date and time without seconds. See Appendix 2. Example: <i>2016-11-25T14:46+11:00</i>	NEW - Rationale: Needed (along with the <i>off_winfield</i>) to allow <i>tn_offloading_vessel</i> records and <i>tn_ov_product</i> records to be correctly linked. Validation: Must be a recent earlier date/time, including the hours offset from UTC time. Note: Could be automatically generated by the submitters computer system at the moment that the declaration was sent.
The number of transhipped product records that are being submitted	<i>product_count</i>	INTEGER Example: 25	NEW - Rationale: Needed to ensure that product to be transhipped records have not been lost or duplicated in transmission. Note: Could be automatically generated by the submitters computer system at the moment that the declaration was sent.
The CCM responsible for reporting this transshipment	<i>reporting_ccm</i>	CHAR(2) Example: VU	NEW – A two letter code representing the CCM responsible for reporting the transshipment. Validation: Must be a valid CCM WCPFC alpha-2 two-letter Country Code.
A contact email address	<i>contact_email</i>	VARCHAR(50) Example: <i>a.fisher@gmail.com</i>	NEW - Rationale: An email address that WCPFC should use to (1) confirm receipt of this notice and (2) contact if there are any problems with the quality / completeness of this notice. Validation: Must be a valid email address.

RECORD NAME: *tn_ov_product*

All of the fields listed below are required in each record. No field may contain missing or null values.

Information Required	Field Name	Field Format	Notes
The Offloading Vessel's WCPFC Identification Number (WIN)	<i>off_win</i>	VARCHAR(16) Example: <i>ABC1234</i>	Reference: CMM2009-06, annex 3, para 1. Validation: Must be a valid WIN, on the date of transshipment, in the WCPFC Record of Fishing Vessels.
The date and time that the notice was submitted	<i>submit_time</i>	VARCHAR(22) ISO 8601 – Date and time without seconds. See Appendix 2. Example: <i>2016-11-25T14:46+11:00</i>	NEW & DUPLICATE - Rationale: Needed (along with the <i>off_win</i> field) to allow <i>td_offloading_vessel</i> records and <i>td_ov_product</i> records to be correctly linked. Validation: Must have a matching entry in the <i>td_offloading_vessel</i> record.
The species of the product that will be transhipped	<i>species</i>	CHAR(3), Uppercase The three-letter FAO species code for the species. Example: <i>SKJ</i>	Reference: CMM2009-06, annex 3, para 3. Validation: Must be a valid three-letter FAO species code - www.fao.org/fishery/collection/asfis/en
The processed state for the product that will be transhipped	<i>processed_state</i>	CHAR(2), Uppercase Example: <i>WH</i>	Reference: CMM2009-06, annex 3, para 3. Validation: Must be a valid processed state code as found in Appendix 4.
The geographic location of the catch	<i>catch_loc</i>	VARCHAR(13), Uppercase Example: <i>WCPFC-HS</i>	Reference: CMM2009-06, annex 3, para 6. Validation: Must be a valid location code as found in Appendix 3.
The quantity of the product that will be transhipped	<i>quantity_product</i>	FLOAT Example: <i>3.92</i>	Reference: CMM2009-06, annex 3, para 4. The weight of product to be transhipped, measured in metric tonnes.

5.c Standards for cancelling a previous e-report

<i>tn_ov_cancel</i>

It will be possible to use e-reporting to cancel a previously submitted Offloading Vessel Transhipment Notice. For each Offloading Vessel Transhipment Notice cancellation, there must be one *tn_ov_cancel* record.

RECORD NAME: <i>tn_ov_cancel</i> All of the fields listed below are required in each record. No field may contain missing or null values.			
Information Required	Field Name	Field Format	Notes
The Offloading Vessel's WCPFC Identification Number (WIN)	<i>off_win</i>	VARCHAR(16) Example: <i>ABC1234</i>	Reference: CMM2009-06, annex 3, para 1. Validation: Must be a valid WIN, on the date of transhipment, in the WCPFC Record of Fishing Vessels.
The WCPFC Transhipment ID for the Offloading Vessel Transhipment Notice that is being cancelled	<i>trans_id</i>	CHAR(16) Example: <i>FGYH7892ELPU3087</i>	Rationale: Needed to allow already submitted transhipment notices to be amended. Validation: Must be a valid WCPFC Transhipment ID, for a transhipment notice that had previously been made by the offloading vessel. Note: Will have been sent by the WCPFC to the contact email address when the Transhipment Notice was first submitted.
A contact email address	<i>contact_email</i>	VARCHAR(50) Example: <i>a.fisher@gmail.com</i>	Rationale: An email address that WCPFC should use to (1) confirm receipt of this cancellation and (2) contact if there are any problems with the quality / completeness of this cancellation. Validation: Must be a valid email address.

6. RECEIVING VESSEL TRANSHIPMENT NOTICES

6.a Standards for the structure of new or amended e-reports

<i>tn_receiving_vessel</i>

For each Receiving Vessel Transhipment Notice, there must be one *tn_receiving_vessel* record.

Any Receiving Vessel Transhipment Notice must be able to be uniquely identified by concatenating:

- the vessel's WCPFC WIN number; and
- the date and time that the notice was submitted.

6.b Standards for the records and fields to be provided

RECORD NAME: <i>tn_receiving_vessel</i>			
All of the fields listed below are required in each record. No field may contain missing or null values.			
Information Required	Field Name	Field Format	Notes
The Offloading Vessel's WCPFC Identification Number (WIN)	<i>off_win</i>	VARCHAR(16) Example: <i>ABC1234</i>	Reference: CMM2009-06, annex 3, para 1. Validation: Must be a valid WIN, on the date of transhipment, in the WCPFC Record of Fishing Vessels.
The Offloading Vessel's Name	<i>off_vessel</i>	VARCHAR(64) Example: <i>Lucky Fisher III</i>	Reference: CMM2009-06, annex 3, para 1. Validation: Must be the vessel name which, in the WCPFC Record of Fishing Vessels, corresponds to the <i>off_win</i> provided.
The Receiving Vessel's WCPFC Identification Number (WIN)	<i>rec_win</i>	VARCHAR(16) Example: <i>DEF5678</i>	Reference: CMM2009-06, annex 3, para 2. Validation: Must be a valid WIN, on the date of transhipment, in the WCPFC Record of Fishing Vessels.
The Receiving Vessel's name	<i>rec_vessel</i>	VARCHAR(64) Example: <i>Super Hauler 2</i>	Reference: CMM2009-06, annex 3, para 2. Validation: Must be the vessel name which, in the WCPFC Record of Fishing Vessels, corresponds to the <i>rec_win</i> provided.

The date on which the transshipment is proposed to start	<i>prop_date</i>	<p>VARCHAR(22)</p> <p>ISO8601, – UTC date or local datetime. See Appendix 2.</p> <p>Example:</p> <p>2016-11-25Z</p> <p>2016-11-25T00:00+0700</p>	<p>Reference: CMM2009-06, annex 1, para 9.</p> <p>Validation: Must be a date in the recent past. If a UTC date is used then this must include the “Z” suffix. If a local datetime is used then this must include the hours offset from UTC time as the suffix.</p>
The location at which the transshipment is proposed to start	<i>prop_loc</i>	<p>VARCHAR(13), Uppercase</p> <p>Example: WCPFC-HS</p>	<p>Reference: CMM2009-06, annex 3, para 5.</p> <p>Validation: Must be a valid location code as found in Appendix 3.</p>
The latitude at which the transshipment is proposed to start	<i>prop_latitude</i>	<p>CHAR(5)</p> <p>ISO6709, to the nearest 0.1 degree</p> <p>±DD.D</p> <p>Example for Pohnpei Airport: +07.0</p>	<p>Reference: CMM2009-06, annex 3, para 5.</p> <p>Validation: Must be a valid latitude.</p>
The longitude at which the transshipment is proposed to start	<i>prop_longitude</i>	<p>CHAR(6)</p> <p>ISO6709, to the nearest 0.1 degree</p> <p>±DDD.D</p> <p>Example for Pohnpei Airport: +158.2</p>	<p>Reference: CMM2009-06, annex 3, para 5.</p> <p>Validation: (1) Must be a valid longitude and (2) Should, when considered along with the <i>prop_latitude</i>, represent a location that is at sea and within the <i>prop_loc</i>.</p>
Whether this is a new transshipment notice, or an amendment to a previous transshipment notice	<i>trans_id</i>	<p>CHAR(16)</p> <p>Example:</p> <p><i>New-Transshipment</i></p>	<p>NEW - Rationale: Needed to allow already submitted transshipment notices to be amended.</p> <p>Validation: In the case of new transshipment notices, must be “New-Transshipment”. In the case of amendments to a previous transshipment notice, must be the Transshipment ID that the WCPFC sent to the contact email address when confirming receipt of the notice.</p>
The date and time that the notice was submitted	<i>submit_time</i>	<p>VARCHAR(22)</p> <p>ISO 8601 – Date and time without seconds. See Appendix 2.</p> <p>Example:</p> <p>2016-11-25T14:46+11:00</p>	<p>NEW - Rationale: Needed to ensure consistency with the standards documented in sections 3.b, 4.b, and 5.b.</p> <p>Validation: Must be a recent earlier date/time including the hours offset from UTC time.</p> <p>Note: Could be automatically generated by the submitters computer system at the moment that the declaration was sent.</p>

The CCM responsible for reporting this transshipment	<i>reporting_ccm</i>	CHAR(2) Example: VU	NEW – A two letter code representing the CCM responsible for reporting the transshipment. Validation: Must be a valid CCM WCPFC alpha-2 two-letter Country Code.
A contact email address	<i>contact_email</i>	VARCHAR(50) Example: <i>a.carrier@gmail.com</i>	NEW - Rationale: An email address that WCPFC should use to (1) confirm receipt of this notice and (2) contact if there are any problems with the quality / completeness of this notice. Validation: Must be a valid email address.

DRAFT

6.c Standards for cancelling a previous e-report

<i>tn_re_cancel</i>

It will be possible to use e-reporting to cancel a previously submitted Receiving Vessel Transhipment Notice. For each Receiving Vessel Transhipment Notice cancellation, there must be one *tn_re_cancel* record.

RECORD NAME: <i>tn_re_cancel</i>			
All of the fields listed below are required in each record. No field may contain missing or null values.			
Information Required	Field Name	Field Format	Notes
The Receiving Vessel's WCPFC Identification Number (WIN)	<i>rec_win</i>	VARCHAR(16) Example: <i>DEF5678</i>	Reference: CMM2009-06, annex 3, para 2. Validation: Must be a valid WIN, on the date of transhipment, in the WCPFC Record of Fishing Vessels.
The WCPFC Transhipment ID for the Receiving Vessel Transhipment Notice that is being cancelled	<i>trans_id</i>	CHAR(16) Example: <i>FGYH7892ELPU3087</i>	Rationale: Needed to allow already submitted transhipment notices to be amended. Validation: Must be a valid WCPFC Transhipment ID, for a transhipment notice that had previously been made by the receiving vessel. Note: Will have been sent by the WCPFC to the contact email address when the Transhipment Notice was first submitted.
A contact email address	<i>contact_email</i>	VARCHAR(50) Example: <i>a.carrier@gmail.com</i>	Rationale: An email address that WCPFC should use to (1) confirm receipt of this cancellation and (2) contact if there are any problems with the quality / completeness of this cancellation. Validation: Must be a valid email address.

6.d Notes

For the e-reporting of Transhipment Notices by receiving vessels:

- the requirement for the receiving vessel to supply information on the product to be transhipped (CMM2009-06, annex 3, para 3) would be waived. The offloading vessel would still be required to supply this information.

7. STANDARDS FOR THE TRANSMISSION OF TRANSHIPMENT E-REPORTS

Initially, JSON will be the format for data transmission. Subsequently, XML and FLUX will be added as formats for data transmission. Vessels, agents or CCMs wishing to e-report Transshipment Declarations and Transshipment Notices can choose which of these three formats they use.

Transmission Format Chosen	Standards
XML	<ol style="list-style-type: none"> 1. There must be one XML Document for each Transshipment Declaration or Transshipment Notice being sent. 2. Within each XML Document, there must be one root element named "WCPFC_Transhipment". 3. Nested within the root element, for each record being transmitted there must be one 1st level element. These 1st level elements must have the appropriate Record Name, as defined in sections 3, 4, 5 and 6. 4. Nested within each 1st level element, for each field being transmitted there must be one 2nd level element. These 2nd level elements must have the appropriate Field Name, as defined in sections 3, 4, 5 and 6. 5. Each 2nd level element must contain text appropriate to its Field Name, and fulfilling the standards documented in sections 3, 4, 5 and 6.
JSON	<ol style="list-style-type: none"> 6. There must be one JSON File for each Transshipment Declaration or Transshipment Notice being sent. 7. Within each JSON File, there must be one root object with the key "WCPFC_Transhipment". 8. The value of WCPFC_Transhipment must be a series of 1st level objects, one for each record being transmitted. 9. The keys for these 1st level objects must be the appropriate Record Names, as defined in sections 3, 4, 5 and 6. 10. The values of these 1st level objects must be a series of 2nd level objects, one for each field being transmitted. 11. The keys for these 2nd level objects must be the appropriate Field Names, as defined in sections 3, 4, 5 and 6. 12. Each 2nd level object must contain a value appropriate to its Field Name, and fulfilling the standards documented in sections 3, 4, 5 and 6.
FLUX	Details to be determined in 2019.

APPENDICES

APPENDIX 1 – TRANSHIPMENT FISHING GEAR CODES

Fishing Gear	Code
With purse lines (purse seine)	PS
- one boat operated purse seines	PS1
- two boat operated purse seines	PS2
Without purse lines (lampara)	LA
Beach seines	SB
Boat or vessel seines	SV
- Danish seines	SDN
- Scottish seines	SSC
- Pair seines	SPR
Seine nets (not specified)	SX
Portable lift nets	LNP
Boat-operated lift nets	LNB
Shore-operated stationary lift nets	LNS
Lift nets (not specified)	LN
Set gillnets (anchored)	GNS
Driftnets	GND
Encircling gillnets	GNC
Fixed gillnets (on stakes)	GNF
Trammel nets	GTR
Combined gillnets-trammel nets	GTN
Gillnets and entangling nets (not specified)	GEN
Gillnets (not specified)	GN
Handlines and pole-lines (hand operated)	LHP

Handlines and pole-lines (mechanized)	LHM
Set longlines	LLS
Drifting longlines	LLD
Longlines (not specified)	LL
Trolling lines	LTL
Hooks and lines (not specified)	LX
Harpoons	HAR
Miscellaneous gear	MIS
Recreational fishing gear	RG

Notes:

- these are the same gear codes contained in Attachment 6 of CMM2014-03 (Standards, Specifications and Procedures for the Western and Central Pacific Fisheries Commission Record of Fishing Vessels).
- the Commission may update its Transshipment Fishing Gear Codes at any time. When this occurs, the most recent Transshipment Fishing Gear Codes that have been approved by the Commission must be used.

APPENDIX 2 – DATE/TIME FORMAT

DATE and DATE/TIME fields must adhere to the ISO8601 standard formats listed in the table below.

For fields requiring	Use the format	Example
Date (UTC)	[YYYY]-[MM]-[DD] Z	2016-06-23Z
Date/time (UTC)	[YYYY]-[MM]-[DD]T[HH]:[MM]Z	2016-06-23T20:32Z
Date/time (Local)	[YYYY]-[MM]-[DD]T[HH]:[MM]±[HH]:[MM]	2016-06-23T20:32+11:00 (Note, this example illustrates a datetime in the Pohnpei time zone)

APPENDIX 3 – TRANSHIPMENT LOCATION CODES

Location	Code
EEZ of American Samoa	EEZ-ASM
EEZ of Australia	EEZ-AUS
EEZ of Commonwealth of the Northern Mariana Islands	EEZ-MNP
EEZ of Cook Islands	EEZ-COK
EEZ of Federated States of Micronesia	EEZ-FSM
EEZ of Fiji	EEZ-FJI
EEZ of French Polynesia	EEZ-PYF
EEZ of Guam	EEZ-GUM
EEZ of Indonesia	EEZ-IDN
EEZ of Japan	EEZ-JPN
EEZ of Kiribati	EEZ-KIR
EEZ of Nauru	EEZ-NRU
EEZ of New Caledonia	EEZ-NCL
EEZ of New Zealand	EEZ-NZL
EEZ of Niue	EEZ-NIU
EEZ of Palau	EEZ-PLW
EEZ of Papua New Guinea	EEZ-PNG
EEZ of Philippines	EEZ-PHL
EEZ of Republic of Marshall Islands	EEZ-MHL
EEZ of Samoa	EEZ-WSM
EEZ of Solomon Islands	EEZ-SLB
EEZ of Tokelau	EEZ-TKL
EEZ of Tonga	EEZ-TON
EEZ of Tuvalu	EEZ-TUV

EEZ of United States of America	EEZ-USA
EEZ of Vanuatu	EEZ-VUT
EEZ of Wallis and Futuna	EEZ-WLF
WCPFC Convention Area on the High Seas	WCPFC-HS
WCPFC/IATTC Overlap Area	Overlap
Outside the Convention Area	Outside WCPFC

Note

- these are the same locations listed in the footnotes to CMM2009-06, Annex I and Annex III; although the codes have been developed for this standard.
- the Commission may update its Transshipment Location Codes at any time. When this occurs, the most recent Transshipment Location Codes that have been approved by the Commission must be used.

APPENDIX 4 – TRANSHIPMENT PROCESSED STATE CODES

Processed State	Code
Whole	WH
Gutted and Headed	GH
Gutted, Headed and Tailed	GT
Gutted Only, not Gilled	GO
Gilled and Gutted	LG
Gilled, Gutted and Tailed	LT
Shark Fins	SF
Filletted	FL
Other, not listed above	OT

Note that the Commission may update its Transshipment Processed State Codes at any time. When this occurs, the most recent Transshipment Processed State Codes that have been approved by the Commission must be used.

APPENDIX 5 – TRANSHIPMENT RFMO AREA CODES

Location	Code
Within the WCPFC Convention Area	WCPFC
WCPFC/IATTC Overlap Area	Overlap
Within the IOTC Agreement Area	IOTC
Within the IATTC Convention Area	IATTC
Within the ICCAT Convention Area	ICCAT
Outside Tuna RFMOs	Outside TRFMO

Note that the Commission may update its Transshipment RFMO Area Codes at any time. When this occurs, the most recent Transshipment RFMO Area Codes that have been approved by the Commission must be used.

---END---