



**TECHNICAL AND COMPLIANCE COMMITTEE**

**Fourteenth Regular Session**

26 September – 2 October 2018

Pohnpei, Federated States of Micronesia

---

**SUMMARY OF SUBMISSIONS OF ANNUAL REPORT PART 1 AND ANNUAL REPORT  
PART 2**

---

**WCPFC-TCC14-2018-IP01**

**28 August 2018**

**Paper prepared by the Secretariat**

**Purpose**

1. The purpose of this paper is to provide information on the annual reporting submissions by CCMs to the Commission as required by the WCPFC Convention.

**Background**

2. The WCPF Convention Articles 23 and 25 require CCMs to annually provide information to the Commission on fishing activities by its flagged vessels. Since WCPFC2, a two-part reporting format has been used by CCMs to report on their fishing activities and the implementation of conservation and management measures for the preceding year. Annual Report Part 1 is intended to provide a summary of each CCMs fisheries, research and statistics information for the preceding calendar year and recently includes specific CMM-related reporting requirements for the same period. Annual Report Part 2 is a report on management and compliance measures taken by CCMs in the previous year. The templates for Annual Report Part 1 and Annual Report Part 2 are based on previous years' reports and takes into account specific decisions of the Commission, including adopted CMMs. The dates for submission and the formats for reporting have become standardized over recent years.

**Developments in 2018**

3. As in previous years, the Annual Report Part 2 list was prepared considering the applicable CMMs and other decisions of the Commission, and an online facility was prepared by the Secretariat for CCMs to complete on the WCPFC intranet. Availability of the Annual Report Part 2 online template was announced on 15 March 2018 in WCPFC Circular No.2018/17.

4. In 2018, for some CCMs, the Secretariat undertook to pre-populate some parts of their Annual Report Part 2 with "N/A" (Not Applicable) answers. This approach was applied for Small Island Development States (SIDS) CCMs in respect of certain obligations that the Secretariat understands to not have applied to SIDS in 2017. The approach was also applied in respect of obligations only applying to flag CCMs for those CCMs who in 2017 did not have any vessels listed on the Record of Fishing Vessels. The Secretariat also ensured that these pre-populated answers in each CCMs Annual Report Part 2 did remain editable so that CCMs could review and correct the report as needed.

5. In 2018, the Secretariat continued its assistance to CCMs, particularly SIDS CCMs. In March 2018, the Secretariat attended the FFA MCS Working Group (FFA MCSWG) meeting and in collaboration with the FFA Secretariat, assisted FFA Member CCMs with developing their Annual Report Part 2. In April 2018, the Secretariat also attended the SPC 11<sup>th</sup> Tuna Data Workshop and collaborated with SPC and FFA Secretariats in assisting many Pacific Island CCMs, Indonesia, Philippines and Vietnam with their Annual Reports Part 1. In addition, throughout the year, the Secretariat was able to work with and assisted many CCMs where required including electronically, via email and skype, with their reporting obligations, in particular the Annual Reports Part 2 including in-country meetings with Federated States of Micronesia and Kiribati. This assistance was often in response to specific requests from CCMs, or CCMs accepting the Secretariat's offer to assist.

6. Completion and submission by CCMs of their Annual Report Part 2 online assists the Secretariat with transferring the relevant data for the Commission approved list of obligations to be assessed in CMR, from Annual Report Part 2 ("CCM Assessment" and "CCM Implementation"), into the draft Compliance Monitoring Report. In addition, the Secretariat can check on each CCM's activity in completing their Annual Report Part 2, and can provide assistance to CCMs remotely and send out reminders to those yet to complete their report or check if there were parts of the report that may have been overlooked. These efforts, together with the fact that the deadline for submission of these reports were evaluated in the Compliance Monitoring Scheme (CMS) process may have continued to contribute, in part, to the improvements in timely submission by CCMs of their Annual Reports over the years.

7. This year, all Annual Reports Part 1 were received on time except for one which was received a few days past the deadline. On the other hand, thirty four Annual Reports Part 2 were received on time, two were received past the deadline and at the time of writing this paper, the Secretariat was yet to receive one Annual Report Part 2.

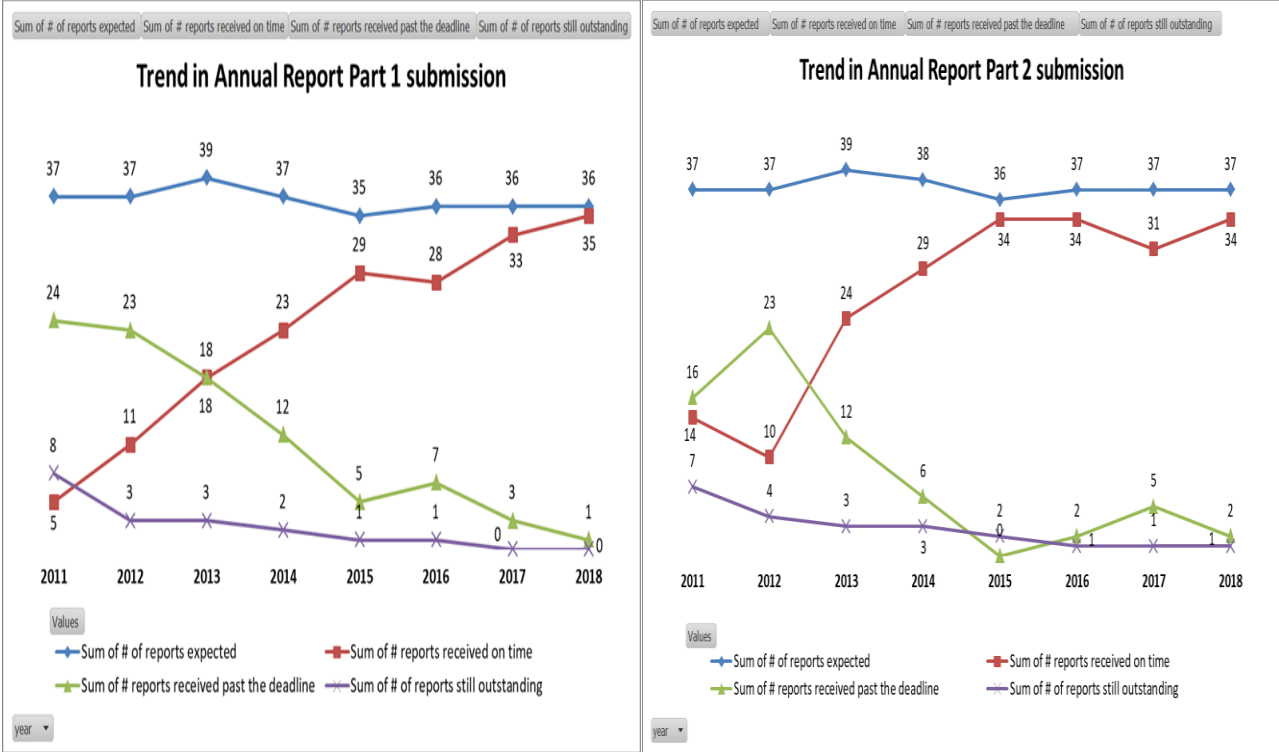
8. Table 1 provides a summary of the timelines of the submission of Annual Reports Part 1 and Part 2 in 2018, covering 2017 activities. It also provides, for comparison, submission of Annual Reports Part 1 and Part 2 for the past few years, after the Compliance Monitoring Scheme was first adopted in 2010.

### **Annual Report Part 1 & Part 2 and the Compliance Monitoring Scheme (CMS)**

9. The Annual Reports Part 1 and 2 are two important sources of information for the preparation of the draft Compliance Monitoring Report (dCMR) prepared pursuant to paragraph 22 of CMM 2017-07 entitled *Conservation and Management Measure for Compliance Monitoring Scheme*. The CCM reported data in Annual Report Part 2 (YES/NO/not applicable and any explanations) for the Commission approved list of obligations to be assessed in CMR can be transferred into the dCMR. In addition, the Secretariat reviews as part of preparing the dCMR, and as appropriate references, certain information and data related to required reports under CMMs and/or descriptions of annual fishing activity during the previous years as described by CCMs within Annual Report Part 1. Presently based on CMM 2017-07 and the approved list of obligations to be considered in CMS, the Secretariats work in preparing the dCMR relies on the timely submissions of these two reports. In 2018, most CCMs maintained their timely submission of Annual Reports Part 1 and Part 2. Advice of availability online for 37 CCMs of their relevant dCMRs was announced on 2 August 2018 in Circular No. 2018/44.

10. Figure 1 below shows the trend in submission of Annual Report Part 1 and Part 2, respectively over the last 8 years.

**Figure 1: Trend in Annual Report Part 1 and Part 2 submissions**



**Administration notes**

11. CCMs are reminded that the Secretariat is available to assist with any queries related to, or in their preparation of, their Annual Reports. All enquiries related to Annual Reports should be directed to [contact.ar@wcpfc.int](mailto:contact.ar@wcpfc.int).

**Recommendation**

12. TCC14 is invited to note this paper.

Table 1: Submissions of Annual Report Part 1 and Part 2 for 2018 (covering 2017 activities) as well as the past few years

CCM	Annual Report Part 1 submission								Annual Report Part 2 submission								CCM	
	2011 (covering 2010 activities) due 7 Jul 2011	2012 (covering 2011 activities) due 7 Jul 2012	2013 (covering 2012 activities) due 7 Jul 2013	2014 (covering 2013 activities) due 7 Jul 2014	2015 (covering 2014 activities) due 6 Jul 2015	2016 (covering 2015 activities) due 4 Jul 2016	2017 (covering 2016 activities) due 10 Jul 2017	2018 (covering 2017 activities) due 9 Jul 2018	2018 (covering 2017 activities) due 1 Jul 2018	2017 (covering 2016 activities) due 1 Jul 2017	2016 (covering 2015 activities) due 1 Jul 2016	2015 (covering 2014 activities) due 1 Jul 2015	2014 (covering 2013 activities) due 1 Jul 2014	2013 (covering 2012 activities) due 1 Jul 2013	2012 (covering 2011 activities) due 1 Jul 2012	2011 (covering 2010 activities) due 29 Aug 2011		
AU	8-Jul-11	6-Jul-12	21-Jun-13	30-Jun-14	2-Jul-15	29-Jun-16	9-Jul-17	4-Jul-18	1-Jul-18	30-Jun-17	30-Jun-16	30-Jun-15	26-Jun-14	28-Jun-13	29-Jun-12	29-Aug-11	AU	
CA	8-Jul-11	18-Jul-12	18-Jun-13	21-Jun-14	1-Jul-15	22 Jun (rev1)	26-Jun-17	28-Jun-18	23-Jun-18	27-Jul-17	30-Jun-16	30-Jun-15	1-Jul-14	29-Jun-13	21-Jul-12	29-Aug-11	CA	
CN	2-Aug-11	19-Jul-12	16-Jul-13	24-Jul-14	6-Jul-15	4-Jul-16	10-Jul-17	9-Jul-18	29-Jun-18	30-Jun-17	30-Jun-16	30-Jun-15	1-Jul-14	25-Jun-13	23-Aug-12	26-Aug-11	CN	
CK	30-Apr-11	4-Aug-12	9-Jul-13	6-Jul-14	4-Jul-15	3-Jul-16	12 Jul 17 (rev1)	9-Jul-18	30-Jun-18	23-Jun-17	25-Jun-16	30-Jun-15	1-Jul-14	12-Jul-13	5-Jul-12	6-Sep-11	CK	
EU	21-Jul-11	26-Jul-12	11-Jul-13	7-Jul-14	6-Jul-15	4-Jul-16	7-Jul-17	6-Jul-18	1-Jul-18	30-Jun-17	4-Jul-16	1-Jul-16	1-Jul-15	1-Jul-14	2-Jul-13	3-Jul-12	28-Jul-11	EU
FM	4-Aug-11	26-Jul-12	23-Jul-13	25-Jun-14	4-Jul-15	4-Jul-16	9-Jul-17	9-Jul-18	29-Jun-18	29-Jun-17	30-Jun-16	23-Jun-15	26-Jun-14	25-Jun-13	25-Jul-12	26-Aug-11	FM	
FJ	9-Aug-11	11-Jul-12	7-Jul-13	3-Jul-14	5-Jul-15	23-Jun-16	10-Jul-17	8-Jul-18	29-Jun-18	30-Jun-17	1-Jul-16	25-Jun-15	26-Jun-14	28-Jun-13	2-Jul-12	1-Sep-11	FJ	
FR									22-Jun-18	1-Jul-17	1-Jul-16						FR	
PF	9-Jul-11	7-Jul-12	28-Jun-13	25-Jun-14	20-Jun-15	1-Jul-16	7-Jul-17	7-Jul-18	29-Jun-18	27-Jun-17	1-Jul-16	30-Jun-15	24-Jun-14	29-Jun-13	7-Jul-12	31-Aug-11	PF	
ID	5-Aug-11	16-Jul-12	27-May-13	7-Jul-14	7-Jul-15	1-Jul-16	8-Jul-17	6-Jul-18	29-Jun-18	22-Jun-17	1-Jul-16	1-Jul-15	1-Jul-14	27-Jun-13	16-Jul-12	1-Aug-11	ID	
JP	9-Jul-11	10-Jul-12	5-Jul-13	7-Jul-14	5-Jul-15	4-Jul-16	5-Jul-17	4-Jul-18	28-Jun-18	30-Jun-17	1-Jul-16	30-Jun-15	1-Jul-14	1-Jul-13	6-Jul-12	2-Sep-11	JP	
KI	26-Jul-11	4-Aug-12	9-Aug-13	3-Aug-14	5-Jul-15	4-Jul-16	10-Jul-17	9-Jul-18	28-Jun-18	30-Jun-17	28-Jun-16	30-Jun-15	1-Jul-14	2-Oct-13	28-Sep-12	26-Sep-11	KI	
KR	22-Jul-11	8-Jul-12	7-Jul-13	7-Jul-14	5-Jul-15	4-Jul-16	10-Jul-17	9-Jul-18	29-Jun-18	1-Jul-17	30-Jun-16	30-Jun-15	1-Jul-14	4-Jul-13	6-Jul-12	17-Aug-11	KR	
MH	22-Aug-11	26-Sep-12	5-Aug-13	28-Aug-14	5-Jul-15	4-Jul-16	10-Jul-17	9-Jul-18	29-Jun-18	1-Jul-17	1-Jul-16	1-Jul-15	1-Jul-14	1-Jul-13	26-Sep-12	5-Oct-11	MH	
NR	22-Sep-11	20-Jul-12	28-Apr-13	25-Jun-14	5-Jul-15	30-Jun-16	21-Jun-17	22-Jun-18	27-Jun-18	26-Jun-17	21-Jun-16	1-Jul-15	16-Jun-14	26-Jun-13	11-Jul-12	22-Sep-11	NR	
NC	8-Jul-11	6-Jul-12	27-Jun-13	4-Jul-14	3-Jul-15	29-Jun-16	5-Jul-17	4-Jul-18	28-Jun-18	30-Jun-17	30-Jun-16	30-Jun-15	30-Jun-14	28-Jun-13	29-Jun-12	19-Aug-11	NC	
NZ	8-Aug-11	4-Jul-12	4-Jul-13	1-Jul-14	5-Jul-15	4-Jul-16	9-Jul-17	6-Jul-18	29-Jun-18	30-Jun-17	27-Jun-16	1-Jul-15	30-Jun-14	1-Jul-13	29-Jun-12	30-Aug-11	NZ	
NU			9-Jul-13	5-Jul-14	5-Jul-15	1-Jul-16	20-Jul-17	9-Jul-18	20-Jun-18	27-Jun-17	30-Jun-16	1-Jul-15	1-Jul-14	16-Jul-13	25-Sep-12	18-Oct-11	NU	
PW		30-Jul-12	15-Jul-13	3-Jul-14	4-Jul-15	20-Sep-16	9-Jul-17	6-Jul-18	27-Jun-18	30-Jun-17	1-Jul-16	1-Jul-15	29-Sep-14	26-Aug-13	29-Sep-12		PW	
PG	23-Aug-11	10-Sep-12	19-Jul-13	11-Jul-14	15-Jul-15	26-Sep-16	27-Sep-17	9-Jul-18	1-Jul-18	26-Sep-17	4-Jul-16	1-Jul-15	28-Aug-14	13-Aug-13	28-Sep-12	10-Sep-11	PG	
PH	28-Jul-11	27-Jul-12	8-Jul-13	7-Jul-14	1-Jul-15	1-Jul-16	29-Jun-17	1-Jul-18	1-Jul-18	29-Jun-17	1-Jul-16	1-Jul-15	30-Jun-14	1-Jul-13	1-Jul-12	30-Aug-11	PH	
WS	8-Aug-11	31-Jul-12	4-Jul-13	8-Jul-14	5-Jul-15	4-Jul-16	10-Jul-17	9-Jul-18	20-Jun-18	1-Jul-17	30-Jun-16	1-Jul-15	1-Jul-14	1-Jul-13	12-Sep-12	29-Sep-11	WS	
SB	10-Aug-11	5-Aug-12	5-Aug-13	1-Aug-14	4-Jul-15	30-Jun-16	9-Jul-17	9-Jul-18	28-Jun-18	4-Jul-17	30-Jun-16	1-Jul-15	15-Jul-14	26-Jun-13		28-Aug-11	SB	
TW	8-Aug-11	6-Jul-12	4-Jul-13	7-Jul-14	6-Jul-15	4-Jul-16	10-Jul-17	9-Jul-18	1-Jul-18	1-Jul-17	1-Jul-16	1-Jul-15	1-Jul-14	28-Jun-13	1-Jul-12	29-Aug-11	TW	
TK	8-Sep-11	21-Jul-12	6-Jul-13	6-Jul-14	5-Jul-15	21-Jun-16	15-May-17	9-Jul-18	1-Jul-18	15-May-17	28-Apr-16	25-Jun-15	17-Jun-14	26-Jun-13	25-Sep-12	8-Sep-11	TK	
TO	8-Aug-11	30-Jul-12	5-Jul-13	4-Jul-14	3-Jul-15	1 Jul (rev1)	6-Jul-17	28-Jun-18	11-Jun-18	23-Jun-17	22-Jun-16	30-Jun-15	29-Jun-14	13-May-13	8-Aug-12	30-Aug-11	TO	
TV	8-Aug-11	14-Aug-12	15-Jul-13	6-Jul-14	6-Jul-15	4-Jul-16	10-Jul-17	9-Jul-18	27-Jun-18	30-Jun-17	30-Jun-16	30-Jun-15	30-Jun-14	19-Nov-13	28-Sep-12	31-Oct-11	TV	
US	20-Jul-11	7-Jul-12	5-Jul-13	5-Jul-14	5-Jul-15	1-Jul-16	6-Jul-17	7-Jul-18	1-Jul-18	30-Jun-17	30-Jun-16	1-Jul-15	28-Jun-14	26-Jun-13	30-Jun-12	26-Aug-11	US	
VU	13-Aug-11	9-Aug-12	16-Jul-13	17-Jul-14	5-Jul-15	2-Jul-16	10-Jul-17	9-Jul-18	29-Jun-18	1-Jul-17	1-Jul-16	1-Jul-15	27-Jun-14	1-Jul-13	14-Sep-12	3-Oct-11	VU	
WF		13-Jun-12	1-Dec-13				2-Nov-17	8-Jun-18									WF	
Cooperating Non-Member																		
BZ	28-Jul-11	4-Jul-12	28-Aug-13	28-Jul-14									1-Jul-14	1-Jul-13	19-Jun-12	26-Jul-11	BZ	
KP																	KP	
EC		1-Oct-12	26-Apr-13	13-Sep-14	25-Sep-15	22-Sep-16	9-Jul-17	7-Jul-18	1-Jul-18	5-Jul-17	1-Jul-16	1-Jul-15	1-Jul-14	28-Jun-13	9-Mar-12		EC	
SV	24-Jun-11	29-Jun-12	29-Jun-13	8-Jul-14	7-Jul-15	25-Jun-16	6-Jul-17	13-Jul-18	10-Jul-18	1-Jul-17	20-May-16	1-Jul-15	5-Jul-14	30-Jun-13	30-Jun-12	24-Aug-11	SV	
MX			24-Jul-13	5-Jul-14	23-Jun-15	22-Jun-16	28-Apr-17	28-Jun-18	27-Jun-18	25-Apr-17	20-Jun-16	22-Jun-15	1-Jul-14				MX	
PA		27-Mar-12	30-Sep-13	26-Sep-14	30-Jun-15	2-Dec-16	30-Jun-17	22-Jun-18	1-Jul-18	29-Sep-17	1-Jul-16	30-Jun-15	26-Sep-14	30-Jun-13	26-Sep-12		PA	
TH		13-Nov-12	26-Aug-13	17-Jul-14	7-Jul-15	29-Jul-16	7-Jul-17	9-Jul-18	1-Jul-18	30-Jun-17	1-Aug-16	1-Jul-15	1-Jul-14	14-Jul-13	13-Nov-12		TH	
VN	4-Aug-11	2-Aug-12	16-Jul-13	14-Jul-14	4-Jul-15	14-Jul-16	10-Jul-17	9-Jul-18	1-Jul-18	30-Jun-17	30-Jun-16	29-Jun-15	14-Jul-14	16-Jul-13	2-Aug-12	29-Aug-11	VN	
KN														26-Jul-13			KN	
SN														17-Jul-13			SN	
LR						28-Sep-16	29-Jun-17	3-Jul-18	3-Jul-18	29-Jun-17	1-Jul-16						LR	

Note, CCMs sometimes submit revise versions of either Part 1 and/or Part 2. The date use here is the first date the report was received.

Not applicable

Outstanding reports @ 18 Jul 2018

Date Report received after the due date