



**SCIENTIFIC COMMITTEE
SIXTH REGULAR SESSION**

Nuku'alofa, Tonga
10-19 August 2010

ESTIMATES OF ANNUAL CATCHES IN THE WCPFC STATISTICAL AREA

WCPFC-SC6-2010/ST IP-1

Paper prepared by

Oceanic Fisheries Programme (OFP)
Secretariat of the Pacific Community (SPC)
Noumea, New Caledonia

INTRODUCTION

Estimates of annual catches in the WCPFC Statistical Area (Figure 1) are presented for target tuna species, i.e., albacore (*Thunnus alalunga*) bigeye (*Thunnus obesus*), skipjack (*Katsuwonus pelamis*) and yellowfin (*Thunnus albacares*), and major billfish species, i.e., black marlin (*Makaira indica*), blue marlin (*Makaira mazara*), striped marlin (*Tetrapturus audax*) and swordfish (*Xiphias gladius*). Estimates of catches of southern bluefin tuna (*Thunnus maccoyii*), which are compiled by the Commission for the Conservation of Southern Bluefin Tuna (CCSBT). The compilation of estimates of catches of Pacific bluefin tuna (*Thunnus orientalis*) commenced only recently and will be presented in future editions of this report once the gaps in the provision of historical catch estimates for this species have been resolved. Recent catches of tuna in the domestic fisheries of Vietnam may have amounted to about 19,000 tonnes of skipjack, 18,000 tonnes of yellowfin and 5,500 tonnes of bigeye, for a total of 42,500 tonnes (Lewis 2005); however, these catches have been ignored in the tables and figures presented below at this stage.

TARGET TUNA SPECIES

Tables 1–3 and Figures 2 and 3 present estimates of annual catches of target tunas in the WCPFC Statistical Area. For the sources of the annual catch estimates, see Lawson (2008). For a breakdown of recent catch estimates by gear and flag, see OFP (2009). For discussion regarding trends, see Williams & Terawasi (2010). Estimates of purse-seine catches of bigeye and yellowfin that were not already adjusted for the misidentification of bigeye as yellowfin have been adjusted by the OFP (Lawson 2007).

Tables 4–7 present estimates of annual catches of target tunas in the WCPO Area and the EPO Area (Figure 1) by gear type. Tables 8–10 present estimates of annual catches of target tunas for the WCPO, the EPO and the Pacific Ocean by species. Table 11 and 12, and Figures 4 and 5, present global catches of target tunas, by species and ocean area respectively.

MAJOR BILLFISH SPECIES

Table 13 presents estimates of commercial catches of the four major billfish species by gear type. Table 14 and Figure 6 present estimates of the major billfish catches for all gear types combined. Tables 15 and 16 present estimates of commercial catches of striped marlin and swordfish in the WCPFC Statistical Area north and south of the equator respectively.

REFERENCES

- Lawson, T.A. 2007. Further analysis of the proportion of bigeye in ‘yellowfin plus bigeye’ caught by purse seiners in the WCPFC Statistical Area. Information Paper ST-IP-5. Third Regular Session of the WCPFC Scientific Committee, 13–24 August 2006, Honolulu, Hawaii, United States of America. Oceanic Fisheries Programme, Secretariat of the Pacific Community, Noumea, New Caledonia.
- Lawson, T.A. [ed.]. 2008. WCPFC Tuna Fishery Yearbook, 2007. Western and Central Pacific Fisheries Commission, Pohnpei, Federated States of Micronesia.
- Lewis, A.D. 2005. The Tuna Fisheries of Vietnam — An Overview of Available Information. Information Paper ST-IP-5. First Regular Session of the Scientific Committee of the Western and Central Pacific Fisheries Commission, 8–19 August 2005, Noumea, New Caledonia. Oceanic Fisheries Programme, Secretariat of the Pacific Community, Noumea, New Caledonia.
- OFP. 2009. WCPFC Tuna Fishery Yearbook, 2008. Western and Central Pacific Fisheries Commission, Pohnpei, Federated States of Micronesia.
- Williams, P. & P. Terawasi. 2010. Overview of tuna fisheries in the Western and Central Pacific Ocean, Including Economic Conditions – 2009. Working Paper GN-WP-1. Sixth Regular Session of the WCPFC Scientific Committee, 10–19 August 2010, Nuku'alofa, Tonga. Oceanic Fisheries Programme, Secretariat of the Pacific Community, Noumea, New Caledonia and Pacific Islands Forum Fisheries Agency, Honiara, Solomon Islands.

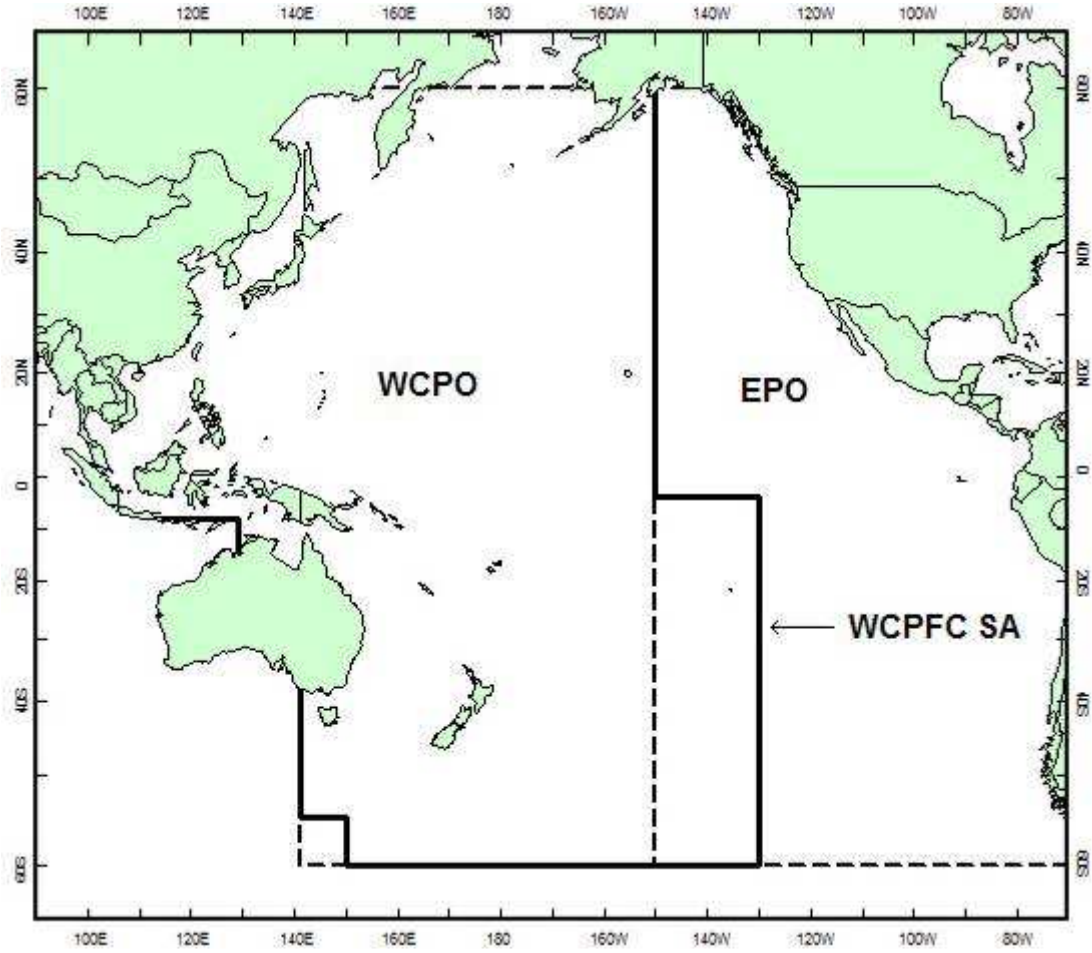


Figure 1. WCPFC Statistical Area (WCPFC SA), the Western and Central Pacific Ocean (WCPO) Area and the Eastern Pacific Ocean (EPO) Area

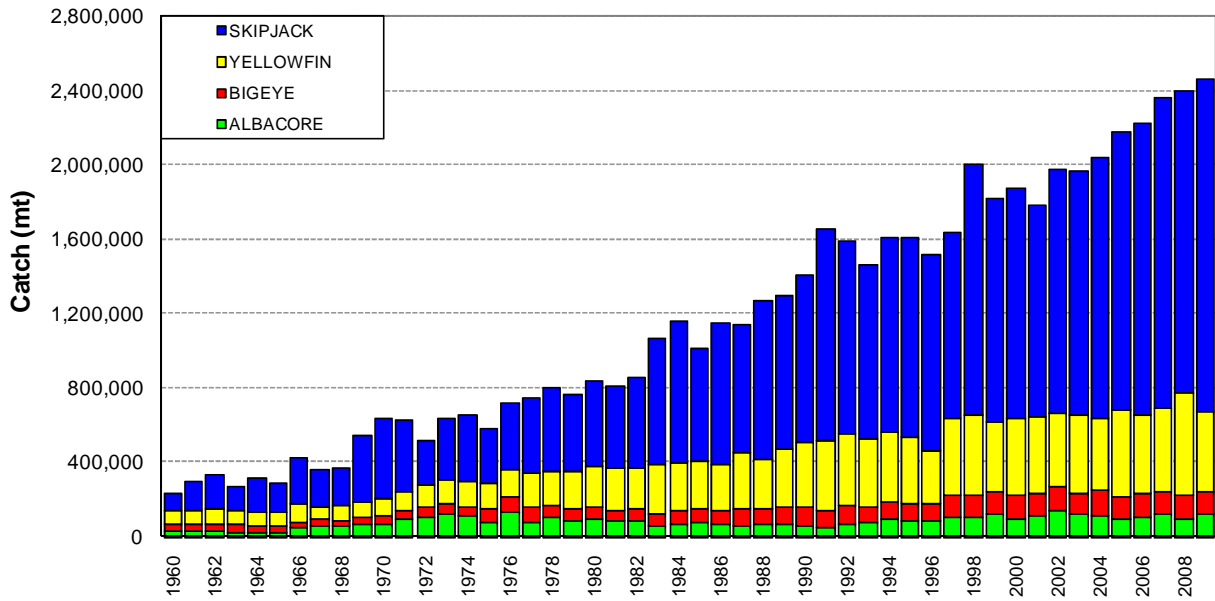


Figure 2. Catches of tuna in the WCPFC Statistical Area, by species

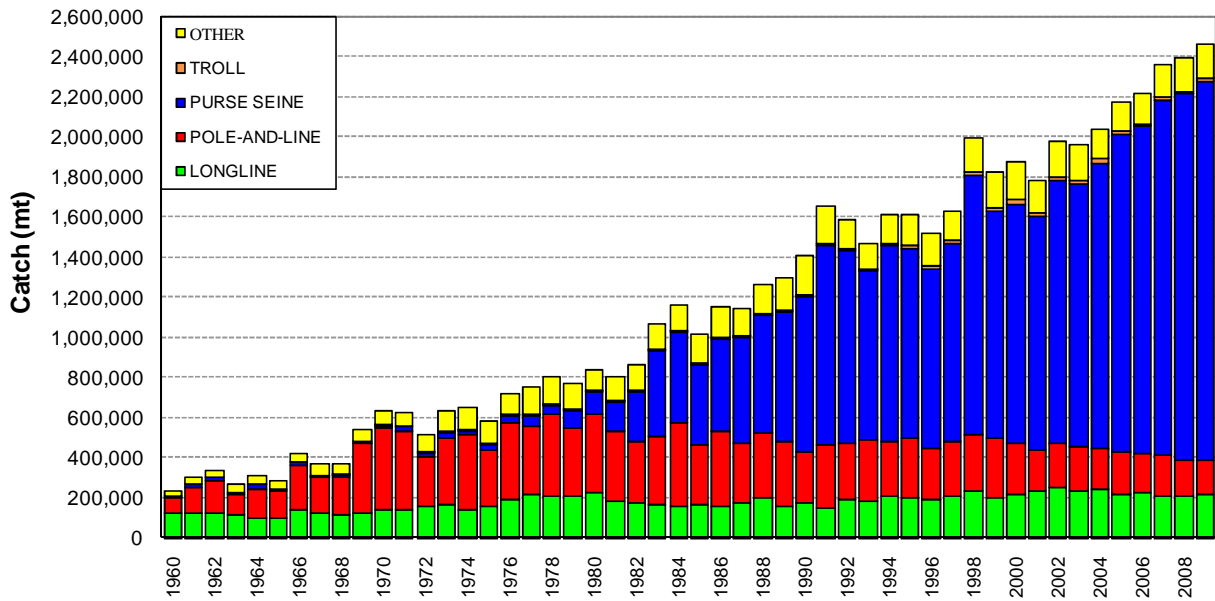


Figure 3. Catches of tuna in the WCPFC Statistical Area, by gear type

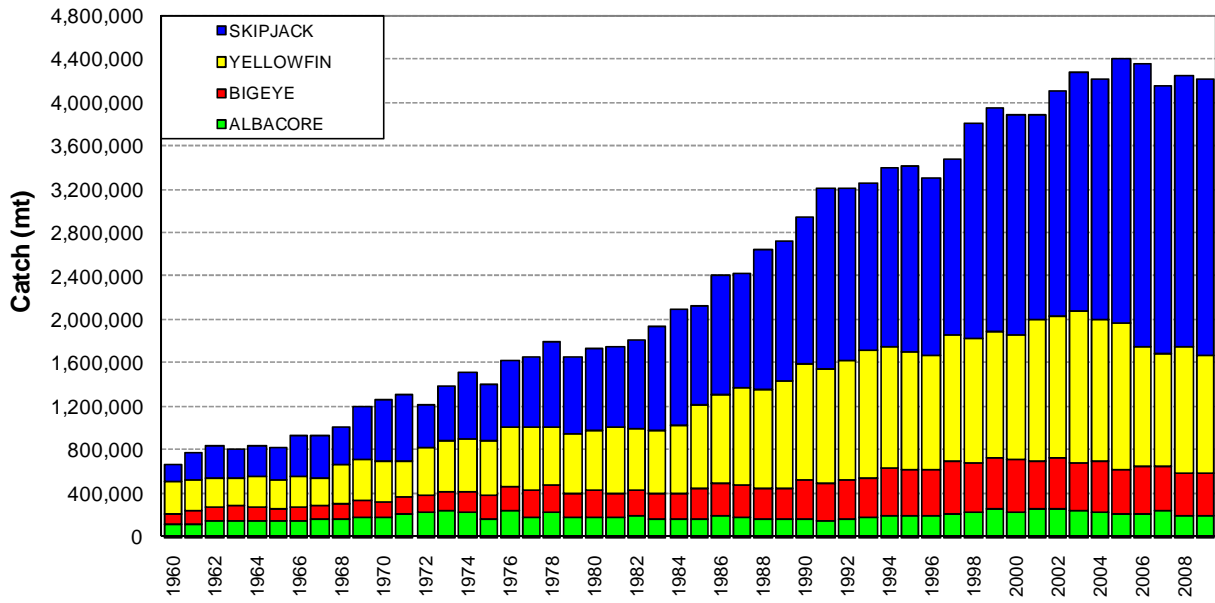


Figure 4. Global catches of tuna, by species

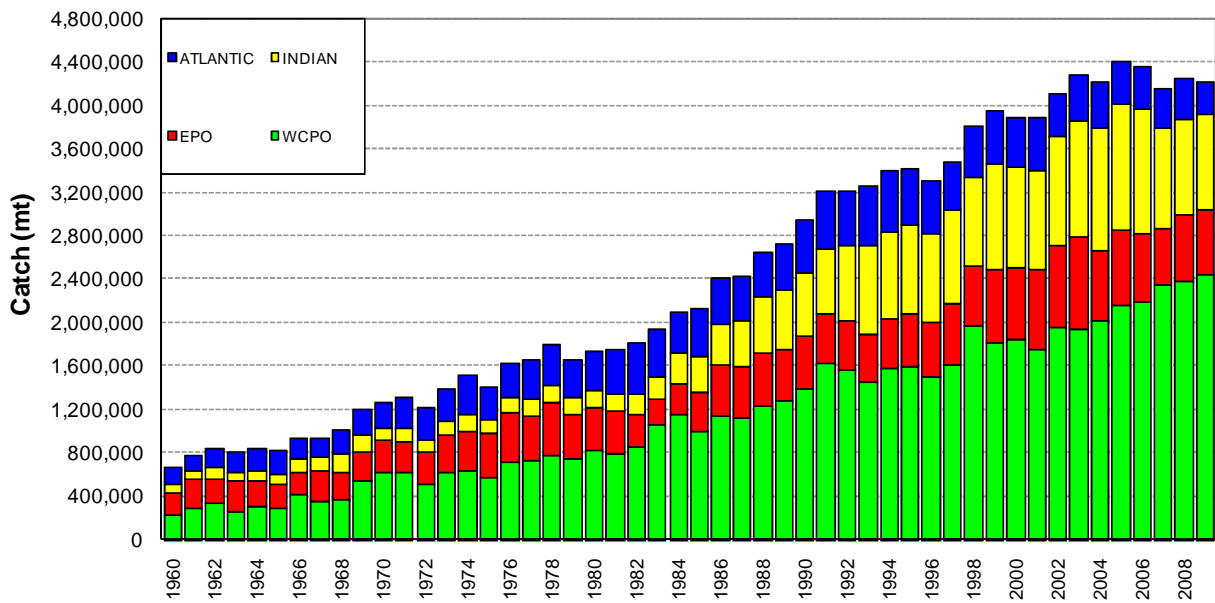


Figure 5. Global catches of tuna, by ocean area

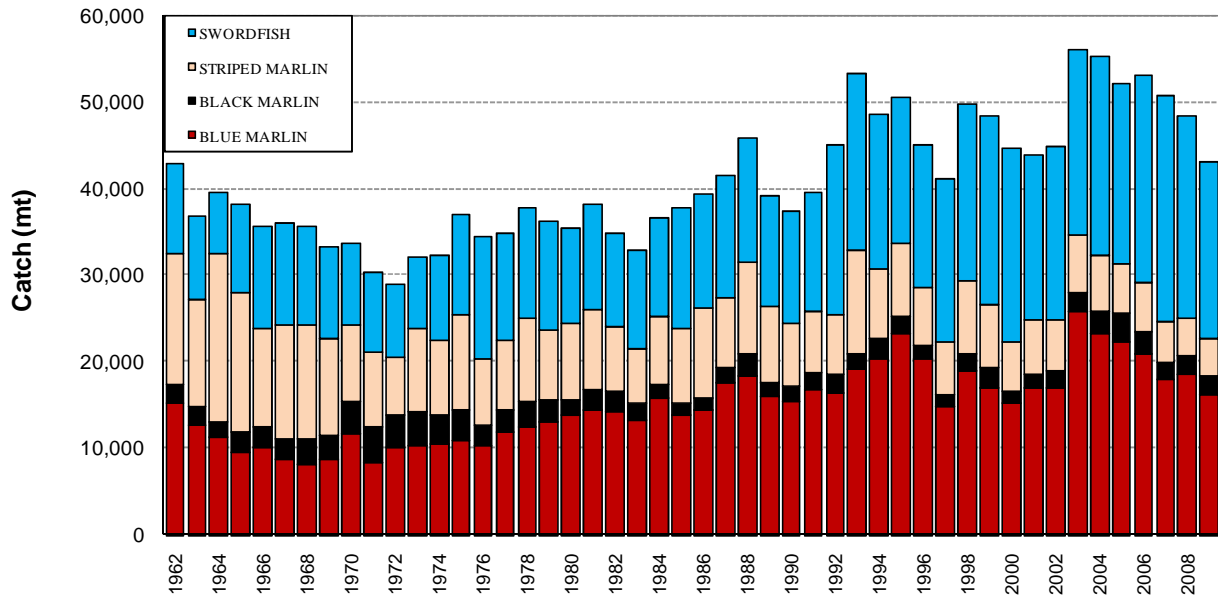


Figure 6. Commercial catches of major billfish species in the WCPFC Statistical Area

Table 1. Catches of target tunas in the WCPFC Statistical Area, by species

YEAR	ALBACORE		BIGEYE		SKIPJACK		YELLOWFIN		TOTAL
	TONNES	%	TONNES	%	TONNES	%	TONNES	%	
1960	31,463	13	45,025	19	89,938	37	73,667	31	240,093
1961	32,922	11	39,380	13	156,736	51	75,438	25	304,476
1962	37,602	11	36,868	11	181,624	53	83,944	25	340,038
1963	26,815	10	44,346	16	122,703	46	75,756	28	269,620
1964	26,687	8	32,391	10	182,918	58	74,154	23	316,150
1965	28,735	10	31,333	11	155,221	54	73,635	25	288,924
1966	52,284	12	33,187	8	249,514	58	93,099	22	428,084
1967	58,822	16	36,748	10	204,831	55	68,939	19	369,340
1968	64,213	17	30,416	8	194,978	52	81,967	22	371,574
1969	72,106	13	34,356	6	351,052	64	87,262	16	544,776
1970	74,350	12	40,082	6	423,431	66	99,156	16	637,019
1971	100,737	16	43,223	7	380,957	60	105,058	17	629,975
1972	109,655	21	57,164	11	237,818	46	116,148	22	520,785
1973	131,149	21	48,966	8	328,784	52	128,375	20	637,274
1974	115,162	18	52,800	8	356,484	54	131,269	20	655,715
1975	84,651	15	69,088	12	288,788	49	141,185	24	583,712
1976	132,947	18	82,183	11	358,389	49	152,498	21	726,017
1977	83,171	11	82,622	11	405,040	54	183,272	24	754,105
1978	111,161	14	64,956	8	452,387	56	175,847	22	804,351
1979	86,007	11	72,890	9	414,303	54	198,420	26	771,620
1980	95,156	11	70,437	8	459,608	55	215,650	26	840,851
1981	88,095	11	57,605	7	438,261	54	227,479	28	811,440
1982	89,496	10	61,983	7	490,244	57	222,038	26	863,761
1983	65,988	6	63,754	6	683,685	64	259,685	24	1,073,112
1984	74,540	6	70,140	6	762,093	65	259,092	22	1,165,865
1985	77,060	8	74,881	7	603,632	59	261,843	26	1,017,416
1986	71,757	6	72,840	6	755,407	66	253,128	22	1,153,132
1987	63,645	6	87,954	8	687,889	60	306,333	27	1,145,821
1988	67,948	5	86,034	7	849,161	67	267,706	21	1,270,849
1989	73,533	6	87,380	7	823,473	63	317,251	24	1,301,637
1990	63,872	5	99,094	7	901,487	64	345,411	24	1,409,864
1991	58,322	4	83,456	5	1,140,246	69	377,069	23	1,659,093
1992	74,452	5	100,333	6	1,040,181	65	379,994	24	1,594,960
1993	77,496	5	85,725	6	937,326	64	369,756	25	1,470,303
1994	96,461	6	97,793	6	1,043,717	65	376,343	23	1,614,314
1995	91,742	6	89,246	6	1,077,527	67	358,474	22	1,616,989
1996	91,140	6	88,434	6	1,053,477	69	290,688	19	1,523,739
1997	112,900	7	117,761	7	990,658	61	414,450	25	1,635,769
1998	112,465	6	118,605	6	1,342,741	67	430,024	21	2,003,835
1999	131,066	7	118,408	6	1,209,652	66	368,638	20	1,827,764
2000	101,161	5	124,489	7	1,244,571	66	410,981	22	1,881,202
2001	121,550	7	116,687	7	1,140,407	64	411,046	23	1,789,690
2002	147,782	7	130,344	7	1,316,865	66	387,651	20	1,982,642
2003	122,938	6	118,180	6	1,305,667	66	420,176	21	1,966,961
2004	121,194	6	135,621	7	1,402,583	69	386,038	19	2,045,436
2005	101,083	5	121,959	6	1,490,778	68	467,770	21	2,181,590
2006	105,440	5	129,086	6	1,563,079	70	425,314	19	2,222,919
2007	124,065	5	121,345	5	1,672,996	71	450,093	19	2,368,499
2008	102,507	4	126,164	5	1,622,008	68	547,985	23	2,398,664
2009	125,479	5	118,657	5	1,789,979	73	433,788	18	2,467,903

Table 2. Catches of target tunas in the WCPFC Statistical Area, by gear type

YEAR	LONGLINE		POLE-AND-LINE		PURSESEINE		TROLL		OTHER		TOTAL
	TONNES	%	TONNES	%	TONNES	%	TONNES	%	TONNES	%	
1960	129,874	54	73,800	31	5,224	2	0	0	31,195	13	240,093
1961	123,330	41	132,070	43	14,540	5	0	0	34,536	11	304,476
1962	128,804	38	157,412	46	18,875	6	0	0	34,947	10	340,038
1963	122,263	45	98,628	37	11,934	4	0	0	36,795	14	269,620
1964	102,481	32	143,323	45	29,012	9	0	0	41,334	13	316,150
1965	103,955	36	134,621	47	8,621	3	0	0	41,727	14	288,924
1966	145,278	34	218,900	51	16,913	4	0	0	46,993	11	428,084
1967	128,047	35	174,774	47	14,508	4	5	0	52,006	14	369,340
1968	120,136	32	183,954	50	15,143	4	14	0	52,327	14	371,574
1969	122,806	23	354,784	65	9,483	2	0	0	57,703	11	544,776
1970	141,360	22	409,754	64	16,222	3	50	0	69,633	11	637,019
1971	143,625	23	392,914	62	24,511	4	0	0	68,925	11	629,975
1972	161,533	31	242,745	47	29,030	6	268	0	87,209	17	520,785
1973	166,399	26	330,841	52	36,269	6	484	0	103,281	16	637,274
1974	145,192	22	370,499	57	29,548	5	898	0	109,578	17	655,715
1975	164,049	28	279,663	48	27,685	5	646	0	111,669	19	583,712
1976	198,013	27	382,627	53	40,770	6	25	0	104,582	14	726,017
1977	218,413	29	345,257	46	53,492	7	621	0	136,322	18	754,105
1978	212,059	26	407,482	51	52,040	6	1,686	0	131,084	16	804,351
1979	211,221	27	344,799	45	90,102	12	814	0	124,684	16	771,620
1980	227,707	27	395,746	47	113,264	13	1,489	0	102,645	12	840,851
1981	188,516	23	343,584	42	153,907	19	2,118	0	123,315	15	811,440
1982	177,765	21	309,802	36	249,233	29	2,552	0	124,409	14	863,761
1983	170,385	16	338,181	32	436,509	41	949	0	127,088	12	1,073,112
1984	157,072	13	422,512	36	456,467	39	3,124	0	126,690	11	1,165,865
1985	172,886	17	293,206	29	403,252	40	3,468	0	144,604	14	1,017,416
1986	163,964	14	368,730	32	464,460	40	2,284	0	153,694	13	1,153,132
1987	180,581	16	297,935	26	531,142	46	2,350	0	133,813	12	1,145,821
1988	200,281	16	324,805	26	592,611	47	4,671	0	148,481	12	1,270,849
1989	164,878	13	317,802	24	646,441	50	8,687	1	163,829	13	1,301,637
1990	181,591	13	250,390	18	773,730	55	7,219	1	196,934	14	1,409,864
1991	154,805	9	314,979	19	993,149	60	8,004	0	188,156	11	1,659,093
1992	192,364	12	282,598	18	966,314	61	6,844	0	146,840	9	1,594,960
1993	187,553	13	307,966	21	845,646	58	4,612	0	124,526	8	1,470,303
1994	211,638	13	271,071	17	977,650	61	7,493	0	146,462	9	1,614,314
1995	207,042	13	297,106	18	938,748	58	23,577	1	150,516	9	1,616,989
1996	197,234	13	251,053	16	897,123	59	17,807	1	160,522	11	1,523,739
1997	213,450	13	273,844	17	980,797	60	18,732	1	148,946	9	1,635,769
1998	233,645	12	282,965	14	1,296,103	65	19,099	1	172,023	9	2,003,835
1999	202,973	11	302,239	17	1,130,946	62	13,476	1	178,130	10	1,827,764
2000	217,465	12	261,937	14	1,189,767	63	25,845	1	186,188	10	1,881,202
2001	236,468	13	207,308	12	1,164,273	65	17,332	1	164,309	9	1,789,690
2002	256,582	13	216,944	11	1,315,680	66	16,129	1	177,307	9	1,982,642
2003	239,841	12	221,676	11	1,309,692	67	19,875	1	175,877	9	1,966,961
2004	248,490	12	203,903	10	1,420,422	69	23,445	1	149,176	7	2,045,436
2005	223,148	10	213,054	10	1,582,723	73	13,274	1	149,391	7	2,181,590
2006	230,619	10	192,178	9	1,637,205	74	10,086	0	152,831	7	2,222,919
2007	214,791	9	198,593	8	1,777,303	75	9,223	0	168,589	7	2,368,499
2008	214,898	9	179,046	7	1,823,060	76	11,715	0	169,945	7	2,398,664
2009	223,792	9	165,814	7	1,894,500	77	10,222	0	173,575	7	2,467,903

Table 3. Catches of target tunas in the WCPFC Statistical Area, by flag

YEAR	AUSTRALIA	BELIZE	CANADA	CHINA	COOK ISLANDS	ECUADOR	EL SALVADOR	FEDERATED STATES OF MICRONESIA
1960	-	-	-	-	-	-	-	-
1961	-	-	-	-	-	-	-	-
1962	-	-	-	-	-	-	-	-
1963	-	-	-	-	-	-	-	-
1964	-	-	-	-	-	-	-	-
1965	-	-	-	-	-	-	-	-
1966	-	-	-	-	-	-	-	-
1967	-	-	-	-	-	-	-	-
1968	-	-	-	-	-	-	-	-
1969	-	-	-	-	-	-	-	-
1970	100	-	-	-	-	-	-	-
1971	100	-	-	-	-	-	-	-
1972	100	-	-	-	-	-	-	-
1973	100	-	-	-	-	-	-	-
1974	100	-	-	-	-	-	-	-
1975	2,000	-	-	-	-	-	-	-
1976	147	-	-	-	-	-	-	-
1977	131	-	-	-	-	-	-	-
1978	375	-	-	-	-	-	-	-
1979	100	-	-	-	-	-	-	-
1980	117	-	-	-	-	-	-	-
1981	357	-	-	-	-	-	-	-
1982	238	-	-	-	-	-	-	-
1983	230	-	-	-	-	-	-	-
1984	147	-	-	-	-	-	-	-
1985	18	-	-	-	-	-	-	-
1986	101	-	-	-	-	-	-	-
1987	1,455	-	-	-	-	-	-	-
1988	1,752	-	235	44	-	-	-	-
1989	2,836	-	235	144	-	-	-	-
1990	6,983	-	235	453	-	-	-	-
1991	9,380	-	235	1,007	-	-	-	11,338
1992	9,524	-	235	2,715	-	-	-	15,472
1993	7,212	-	235	6,419	-	-	-	16,908
1994	5,415	-	235	12,677	32	-	-	20,941
1995	6,288	54	235	10,586	55	-	-	6,759
1996	5,249	129	136	6,026	59	-	-	7,394
1997	7,550	77	149	3,664	-	-	-	8,254
1998	5,153	276	167	3,272	22	-	-	14,179
1999	7,551	211	253	7,515	56	-	-	10,881
2000	6,997	270	351	6,244	335	3,992	-	21,688
2001	5,279	7,143	206	9,947	206	1,057	599	17,646
2002	5,232	3,385	144	15,632	770	427	1,488	20,607
2003	5,809	2,697	-	42,210	2,462	1,562	74	30,829
2004	4,200	943	63	40,172	3,207	3,051	-	28,471
2005	3,095	1,056	72	61,534	3,125	5,193	-	28,302
2006	5,030	632	135	73,736	2,841	9,523	-	10,774
2007	4,404	595	27	69,796	2,625	9,187	6,025	15,440
2008	3,964	225	-	83,969	2,416	10,377	10,962	19,424
2009	3,041	190	-	114,757	2,005	10,377	10,962	21,154

Table 3 continued

YEAR	FIJI ISLANDS	FRENCH POLYNESIA	INDONESIA	JAPAN	KIRIBATI	REPUBLIC OF KOREA	MARSHALL ISLANDS	MEXICO
1960	—	—	7,415	206,606	—	744	—	—
1961	—	—	8,054	269,191	—	385	—	—
1962	—	—	8,749	302,176	—	708	—	—
1963	—	—	9,505	228,717	—	1,955	—	—
1964	—	—	10,327	270,506	—	2,527	—	—
1965	—	—	11,223	232,844	—	7,078	—	—
1966	—	—	12,198	355,838	—	13,405	—	—
1967	—	—	13,260	281,568	—	14,469	—	—
1968	—	—	14,417	273,603	—	10,794	—	—
1969	—	—	15,677	442,850	—	17,077	—	—
1970	—	—	17,600	505,452	—	16,927	—	—
1971	—	—	18,100	471,129	—	16,541	—	—
1972	—	—	28,600	341,854	—	17,678	—	—
1973	—	—	32,500	418,048	—	25,938	—	—
1974	12	—	33,779	429,014	—	14,105	—	—
1975	11	—	34,378	358,037	—	29,343	—	—
1976	742	—	33,375	474,987	—	44,464	—	—
1977	1,711	—	37,235	459,318	—	43,722	—	—
1978	2,524	—	40,024	513,391	—	33,102	—	—
1979	3,494	696	50,973	466,434	—	41,915	—	—
1980	2,496	936	61,795	522,844	1,812	46,096	—	—
1981	5,836	1,001	68,809	460,646	2,376	33,310	—	—
1982	4,428	1,034	74,056	501,943	2,269	39,684	—	—
1983	3,741	836	84,532	554,560	3,406	37,589	—	468
1984	4,572	1,250	96,662	639,034	3,843	33,293	—	6,600
1985	3,946	836	101,905	511,605	2,531	44,292	—	—
1986	3,125	961	111,733	582,323	3,226	63,034	—	—
1987	3,889	878	124,175	504,820	2,246	91,201	—	—
1988	3,891	715	129,922	599,082	3,284	113,653	—	—
1989	5,189	856	145,320	517,619	4,094	139,904	—	—
1990	3,830	2,109	142,237	471,098	2,407	204,399	—	—
1991	5,298	2,335	168,844	490,676	2,036	247,950	—	—
1992	4,790	2,019	194,659	472,795	2,363	213,553	9	—
1993	4,966	2,387	173,969	516,859	2,104	150,165	137	—
1994	5,937	2,804	196,898	473,787	3,131	226,531	48	—
1995	7,009	3,343	204,837	480,681	5,423	206,176	22	—
1996	6,803	3,583	230,450	416,802	6,645	174,948	—	—
1997	4,354	4,564	211,815	507,235	7,020	188,667	—	—
1998	4,013	5,710	277,733	543,367	9,389	247,929	—	—
1999	4,075	5,200	296,242	481,852	9,793	173,490	—	—
2000	9,660	6,833	284,310	497,623	14,726	207,498	7,560	—
2001	11,309	7,736	254,400	439,304	5,401	216,691	35,774	—
2002	11,551	7,347	260,421	451,769	9,830	254,593	38,952	—
2003	10,854	6,309	251,746	469,787	6,898	221,079	37,875	—
2004	17,312	5,438	262,615	441,673	6,661	212,655	46,676	—
2005	11,974	5,041	281,494	482,081	9,165	237,353	56,164	—
2006	15,472	5,938	314,638	447,465	6,723	274,859	42,349	—
2007	10,042	6,458	315,416	474,248	18,020	278,482	59,409	—
2008	11,664	5,507	315,873	435,094	18,374	275,132	33,359	—
2009	10,524	6,927	316,299	391,873	33,603	309,420	44,670	—

Table 3 continued

YEAR	NAURU	NEW CALEDONIA	NEW ZEALAND	NIUE	PALAU	PAPUA NEW GUINEA	PHILIPPINES	RUSSIA
1960	-	-	-	-	-	-	20,585	-
1961	-	-	-	-	-	-	21,735	-
1962	-	-	-	-	-	-	22,957	-
1963	-	-	-	-	-	-	24,252	-
1964	-	-	-	-	1,166	-	25,626	-
1965	-	-	-	-	2,670	-	27,084	-
1966	-	-	-	-	2,686	-	28,632	-
1967	-	-	5	-	3,406	-	30,275	-
1968	-	-	14	-	5,056	-	32,021	-
1969	-	-	-	-	4,762	-	33,875	-
1970	-	-	50	-	8,082	2,428	52,000	-
1971	-	-	-	-	2,143	16,974	57,200	-
1972	-	-	268	-	1,519	13,130	60,700	-
1973	-	-	484	-	2,350	28,216	70,900	-
1974	-	-	899	-	6,808	41,630	81,188	-
1975	-	-	647	-	6,269	17,369	84,450	-
1976	-	-	25	-	5,323	32,921	73,653	-
1977	-	-	621	-	4,012	24,115	118,149	-
1978	-	-	1,701	-	9,694	48,859	87,319	-
1979	-	-	830	-	5,688	26,857	94,308	-
1980	-	-	1,519	-	6,576	33,994	77,505	-
1981	-	229	2,111	-	9,411	31,412	94,616	-
1982	-	868	2,436	-	4,053	-	104,047	-
1983	-	461	6,565	-	-	-	118,529	-
1984	-	150	7,005	-	-	2,744	105,217	-
1985	-	281	5,713	-	97	9,300	137,308	2,111
1986	-	367	6,793	-	131	-	145,097	4,175
1987	-	1,102	5,035	-	161	-	141,461	8,995
1988	-	1,092	3,923	-	157	-	124,786	6,189
1989	-	871	10,323	-	77	-	151,124	4,935
1990	-	1,730	7,120	-	88	-	202,214	2,126
1991	-	1,536	7,765	-	-	-	221,817	3,715
1992	-	1,092	4,524	-	213	-	165,652	2,126
1993	-	1,294	4,415	-	206	8	134,921	8,714
1994	-	1,355	8,513	-	184	1,381	172,558	6,722
1995	-	1,274	8,147	-	100	12,700	198,613	-
1996	-	1,201	10,194	-	100	10,572	205,003	-
1997	-	977	10,451	-	107	19,400	208,767	-
1998	-	1,543	15,154	-	100	50,727	235,586	-
1999	-	1,616	10,141	-	100	38,980	226,319	-
2000	11	1,662	18,918	-	240	68,818	234,519	-
2001	13	1,718	17,533	-	62	92,806	210,786	-
2002	7	1,926	38,574	-	4	124,705	226,863	-
2003	20	2,007	30,614	-	20	159,622	264,106	-
2004	3	2,189	33,886	6	35	225,441	271,760	-
2005	-	2,114	27,917	105	-	235,439	274,247	-
2006	-	1,807	27,410	286	-	233,170	291,564	-
2007	-	1,770	38,969	192	-	230,015	320,567	-
2008	-	1,993	33,877	16	-	205,682	360,187	-
2009	-	2,187	29,174	159	-	213,018	328,047	-

Table 3 continued

YEAR	SAMOA	SOLOMON ISLANDS	SPAIN	CHINESE TAIPEI	TONGA
1960	-	-	-	4,035	-
1961	-	-	-	4,485	-
1962	-	-	-	4,779	-
1963	-	-	-	4,642	-
1964	-	-	-	5,482	-
1965	-	-	-	7,524	-
1966	-	-	-	14,812	-
1967	-	-	-	25,911	-
1968	-	-	-	35,302	-
1969	-	-	-	30,096	-
1970	-	-	-	33,887	-
1971	-	4,711	-	42,640	-
1972	-	7,905	-	48,612	-
1973	-	6,624	-	51,807	-
1974	-	10,332	-	37,501	-
1975	-	7,094	-	43,804	-
1976	-	15,763	-	43,546	-
1977	-	12,202	-	50,858	-
1978	-	18,353	-	46,606	-
1979	-	24,289	-	43,450	-
1980	-	23,241	-	48,323	-
1981	-	22,832	-	37,900	-
1982	-	20,071	-	32,644	205
1983	-	33,432	-	44,458	208
1984	-	35,615	-	56,407	218
1985	-	29,997	-	55,987	233
1986	-	42,249	-	65,658	252
1987	-	29,437	-	84,558	299
1988	-	40,513	-	117,865	276
1989	-	34,262	-	135,125	235
1990	-	26,612	-	164,640	192
1991	-	46,888	-	213,007	197
1992	-	30,558	-	263,185	225
1993	300	28,006	-	207,231	329
1994	736	33,925	-	223,590	411
1995	2,151	49,665	-	228,798	461
1996	2,375	38,697	-	226,436	579
1997	5,498	47,442	-	217,026	663
1998	6,820	48,378	-	306,849	833
1999	5,790	45,662	8,613	252,529	1,084
2000	5,389	12,929	12,896	280,692	1,161
2001	5,864	17,217	2,402	285,928	1,733
2002	4,927	18,537	-	318,806	1,672
2003	2,944	26,364	-	258,052	971
2004	1,967	24,904	5,587	259,667	388
2005	1,626	20,023	3,453	245,233	629
2006	2,564	29,462	11,653	255,874	759
2007	3,559	21,244	20,538	276,458	861
2008	2,796	16,182	35,636	246,187	592
2009	3,411	17,883	26,889	239,200	271

Table 3 continued

YEAR	TOKELAU	TUVALU	UNITED STATES OF AMERICA	VANUATU	EASTERN PACIFIC NEI	TOTAL
1960	-	-	708	-	-	240,093
1961	-	-	626	-	-	304,476
1962	-	-	669	-	-	340,038
1963	-	-	549	-	-	269,620
1964	-	-	516	-	-	316,150
1965	-	-	501	-	-	288,924
1966	-	-	513	-	-	428,084
1967	-	-	446	-	-	369,340
1968	-	-	367	-	-	371,574
1969	-	-	439	-	-	544,776
1970	-	-	493	-	-	637,019
1971	-	-	437	-	-	629,975
1972	-	-	419	-	-	520,785
1973	-	-	307	-	-	637,274
1974	-	-	347	-	-	655,715
1975	-	-	310	-	-	583,712
1976	-	-	1,071	-	-	726,017
1977	-	-	1,359	-	672	754,105
1978	-	-	1,477	-	926	804,351
1979	-	-	11,852	-	734	771,620
1980	-	-	13,483	-	114	840,851
1981	-	-	40,496	-	98	811,440
1982	-	216	75,494	-	75	863,761
1983	-	337	181,593	-	2,167	1,073,112
1984	-	540	162,380	-	10,188	1,165,865
1985	-	4	110,031	-	1,221	1,017,416
1986	-	390	123,517	-	-	1,153,132
1987	-	632	145,072	-	405	1,145,821
1988	-	1,090	122,380	-	-	1,270,849
1989	-	149	148,339	-	-	1,301,637
1990	-	90	171,301	-	-	1,409,864
1991	-	29	225,040	-	-	1,659,093
1992	-	8	209,243	-	-	1,594,960
1993	-	-	203,518	-	-	1,470,303
1994	-	-	215,683	820	-	1,614,314
1995	-	-	176,125	7,276	211	1,616,989
1996	-	-	158,219	11,497	642	1,523,739
1997	-	-	154,149	26,164	1,776	1,635,769
1998	-	-	184,278	39,423	2,934	2,003,835
1999	-	-	191,739	46,162	1,910	1,827,764
2000	-	-	135,410	37,545	2,925	1,881,202
2001	-	-	128,503	11,917	510	1,789,690
2002	8	-	136,190	28,031	244	1,982,642
2003	3	-	101,004	28,443	2,600	1,966,961
2004	3	-	79,395	65,054	2,014	2,045,436
2005	6	-	97,870	86,564	709	2,181,584
2006	6	-	81,165	76,360	709	2,222,904
2007	8	-	103,576	79,853	709	2,368,493
2008	8	-	221,186	47,273	709	2,398,664
2009	12	3,558	279,903	47,680	709	2,467,903

Table 4. Catches of albacore in the Pacific Ocean.

YEAR	SOUTHPACIFIC OCEAN					NORTHPACIFIC OCEAN					TOTAL
	LONGLINE	POLE-AND-LINE	TROLL	OTHER	SUBTOTAL	LONGLINE	POLE-AND-LINE	TROLL	OTHER	SUBTOTAL	
1960	22,248	45	0	0	22,293	17,384	25,156	20,105	769	63,414	85,707
1961	23,742	0	0	0	23,742	17,490	21,476	12,059	1,631	52,656	76,398
1962	35,219	0	0	0	35,219	15,850	9,814	19,753	1,926	47,343	82,562
1963	31,095	16	0	0	31,111	13,639	28,852	25,145	1,438	69,074	100,185
1964	22,824	0	0	0	22,824	15,659	27,269	18,391	1,271	62,590	85,414
1965	25,455	0	0	0	25,455	14,226	41,908	16,557	863	73,554	99,009
1966	38,661	0	0	0	38,661	25,600	24,430	15,377	1,285	66,692	105,353
1967	43,952	0	5	0	43,957	29,821	34,594	17,975	1,316	83,706	127,663
1968	32,368	0	14	0	32,382	25,152	21,503	21,462	2,327	70,444	102,826
1969	24,805	0	0	0	24,805	19,223	34,908	20,192	1,838	76,161	100,966
1970	34,775	100	50	0	34,925	19,229	28,679	21,422	1,656	70,986	105,911
1971	38,530	100	0	0	38,630	14,982	55,028	22,272	2,436	94,718	133,348
1972	39,131	122	268	0	39,521	19,025	64,319	27,521	1,659	112,524	152,045
1973	46,705	141	484	0	47,330	17,030	71,003	17,053	2,006	107,092	154,422
1974	33,039	112	898	0	34,049	14,047	78,341	21,509	1,384	115,281	149,330
1975	22,849	105	646	0	23,600	14,547	55,395	19,043	1,219	90,204	113,804
1976	28,957	100	25	0	29,082	18,510	88,036	16,183	3,217	125,946	155,028
1977	38,019	100	621	0	38,740	17,684	33,431	10,022	2,264	63,401	102,141
1978	32,890	100	1,686	0	34,676	13,851	60,827	16,636	8,064	99,378	134,054
1979	26,162	100	814	0	27,076	14,738	44,965	7,302	4,211	71,216	98,292
1980	30,972	101	1,468	0	32,541	15,635	47,124	7,768	4,707	75,234	107,775
1981	32,694	0	2,085	5	34,784	18,864	28,174	12,837	11,526	71,401	106,185
1982	28,347	1	2,434	6	30,788	18,275	30,039	6,713	13,963	68,990	99,778
1983	24,309	0	744	39	25,092	16,586	21,705	9,584	7,676	55,551	80,643
1984	20,340	2	2,773	1,589	24,704	16,133	27,043	9,354	18,670	71,200	95,904
1985	27,138	0	3,253	1,937	32,328	14,781	22,212	6,471	14,947	58,411	90,739
1986	32,641	0	2,003	1,946	36,590	13,140	16,528	4,738	10,938	45,344	81,934
1987	21,979	9	2,134	930	25,052	15,411	19,240	2,870	11,509	49,030	74,082
1988	28,288	0	4,296	5,283	37,867	15,601	6,814	4,367	18,968	45,750	83,617
1989	18,738	0	8,370	21,968	49,076	14,536	8,683	2,000	19,986	45,205	94,281
1990	19,368	245	6,975	7,538	34,126	16,608	8,647	2,905	26,159	54,319	88,445
1991	23,385	14	7,805	1,489	32,693	18,049	7,103	1,984	10,798	37,934	70,627
1992	30,592	11	6,578	65	37,246	19,991	13,888	4,934	16,580	55,393	92,639
1993	30,229	74	4,296	70	34,669	31,143	12,797	6,748	4,112	54,800	89,469
1994	34,118	67	7,164	89	41,438	30,825	26,389	13,134	3,486	73,834	115,272
1995	29,332	139	7,716	104	37,291	32,948	21,061	10,758	1,725	66,492	103,783
1996	23,816	30	7,379	156	31,381	39,383	20,296	21,849	1,070	82,598	113,979
1997	27,103	21	4,679	133	31,936	48,365	32,311	18,674	2,736	102,086	134,022
1998	37,791	36	6,280	85	44,192	48,050	23,005	20,074	3,237	94,366	138,558
1999	31,909	138	3,419	74	35,540	46,767	50,429	13,853	11,155	122,204	157,744
2000	33,968	102	6,269	139	40,478	41,966	21,619	15,245	4,985	83,815	124,293
2001	48,638	37	5,142	199	54,016	37,125	29,569	16,738	3,002	86,434	140,450
2002	60,590	18	4,574	150	65,332	33,359	48,832	16,323	6,219	104,733	170,065
2003	56,769	12	5,612	130	62,523	32,476	36,173	21,886	3,184	93,719	156,242
2004	57,787	110	4,531	116	62,544	29,284	32,380	22,255	8,977	92,896	155,440
2005	57,597	28	3,451	129	61,205	32,441	16,199	14,067	3,183	65,890	127,095
2006	62,698	29	2,883	188	65,798	33,261	15,423	18,931	1,137	68,752	134,550
2007	56,785	20	2,082	50	58,937	31,827	37,789	18,670	6,438	94,724	153,661
2008	46,569	0	3,502	6	50,077	28,274	19,066	16,844	2,925	67,109	117,186
2009	64,969	0	2,027	0	66,996	25,022	32,427	17,086	2,925	77,460	144,456

Table 5. Catches of bigeye in the Pacific Ocean.

YEAR	WESTERN AND CENTRAL PACIFIC OCEAN					EASTERN PACIFIC OCEAN					TOTAL
	LONGLINE	POLE-AND-LINE	PURSE SEINE	OTHER	SUBTOTAL	LONGLINE	POLE-AND-LINE	PURSE SEINE	OTHER	SUBTOTAL	
1960	43,467	1,500	58	0	45,025	17,722	0	24	0	17,746	62,771
1961	37,517	1,800	63	0	39,380	52,431	106	105	0	52,642	92,022
1962	35,895	800	173	0	36,868	45,050	318	302	0	45,670	82,538
1963	42,540	1,800	6	0	44,346	66,617	140	0	0	66,757	111,103
1964	30,978	1,143	231	28	32,380	46,279	127	0	0	46,406	78,786
1965	29,844	1,254	201	30	31,329	29,164	231	0	0	29,395	60,724
1966	31,949	1,108	9	86	33,152	34,800	292	210	0	35,302	68,454
1967	32,791	2,803	60	253	35,907	35,878	1,305	1,697	0	38,880	74,787
1968	27,199	2,272	183	204	29,858	35,233	115	4,618	0	39,966	69,824
1969	32,371	1,675	48	62	34,156	52,071	0	1,093	0	53,164	87,320
1970	34,348	1,589	726	2,802	39,465	33,341	0	2,411	0	35,752	75,217
1971	36,798	931	876	3,057	41,662	29,804	75	4,359	18	34,256	75,918
1972	49,334	1,762	865	3,497	55,458	36,128	126	3,971	0	40,225	95,683
1973	40,285	1,258	1,078	4,218	46,839	50,777	236	3,342	0	54,355	101,194
1974	41,787	1,039	1,389	4,719	48,934	36,961	0	1,554	0	38,515	87,449
1975	57,623	1,334	1,328	4,938	65,223	41,733	36	6,574	0	48,343	113,566
1976	68,514	3,423	1,312	4,123	77,372	54,290	75	17,212	7	71,584	148,956
1977	66,249	3,325	1,587	5,627	76,788	74,086	2	11,161	0	85,249	162,037
1978	50,375	3,337	1,151	4,231	59,094	70,659	0	18,539	0	89,198	148,292
1979	57,186	2,540	2,031	4,615	66,372	55,435	0	12,097	1	67,533	133,905
1980	56,553	2,278	2,160	4,142	65,133	64,335	0	21,938	130	86,403	151,536
1981	41,564	2,596	4,268	4,918	53,346	53,416	0	14,921	7	68,344	121,690
1982	45,204	4,108	5,251	4,738	59,301	53,365	42	6,939	3	60,349	119,650
1983	41,412	4,055	9,442	4,987	59,896	60,043	39	4,575	37	64,694	124,590
1984	46,429	3,465	9,615	5,171	64,680	46,394	2	8,861	11	55,268	119,948
1985	51,326	4,326	6,944	6,110	68,706	66,325	2	6,056	15	72,398	141,104
1986	46,741	2,865	7,712	6,459	63,777	102,425	0	2,686	74	105,185	168,962
1987	59,357	3,134	11,215	5,563	79,269	100,121	0	1,177	49	101,347	180,616
1988	49,663	4,125	8,220	6,439	68,447	72,758	5	1,535	15	74,313	142,760
1989	53,173	4,298	12,629	7,137	77,237	70,963	0	2,030	1	72,994	150,231
1990	65,108	3,918	12,411	7,623	89,060	98,871	0	5,921	59	104,851	193,911
1991	47,079	1,991	13,750	8,477	71,297	104,195	31	4,870	25	109,121	180,418
1992	61,925	1,757	19,151	5,551	88,384	84,808	0	7,179	13	92,000	180,384
1993	56,335	2,331	13,929	4,911	77,506	72,498	0	9,657	35	82,190	159,696
1994	66,002	2,951	10,630	7,360	86,943	71,360	0	34,899	806	107,065	194,008
1995	56,345	3,776	11,862	7,958	79,941	58,269	0	45,321	1,369	104,959	184,900
1996	45,909	3,864	21,791	8,750	80,314	46,958	0	61,311	748	109,017	189,331
1997	58,299	3,611	41,628	6,864	110,402	52,580	0	64,272	20	116,872	227,274
1998	72,499	2,446	27,131	7,904	109,980	46,375	0	44,129	628	91,132	201,112
1999	64,956	2,176	36,973	7,971	112,076	36,450	0	51,158	538	88,146	200,222
2000	59,614	5,648	40,340	7,926	113,528	47,605	0	94,640	253	142,498	256,026
2001	62,080	4,274	31,240	7,234	104,828	68,755	0	61,156	19	129,930	234,758
2002	79,267	4,242	28,917	8,006	120,432	74,424	0	57,440	12	131,876	252,308
2003	71,488	2,869	28,873	7,522	110,752	59,776	0	54,174	21	113,971	224,723
2004	80,193	5,590	32,701	6,279	124,763	43,483	0	67,592	194	111,269	236,032
2005	66,213	4,018	40,772	4,860	115,863	41,432	0	69,826	25	111,283	227,146
2006	71,252	6,679	42,493	4,716	125,140	33,708	0	83,978	40	117,726	242,866
2007	70,728	4,194	38,814	4,814	118,550	29,928	0	63,074	44	93,046	211,596
2008	64,915	3,576	44,691	4,583	117,765	25,624	0	75,040	28	100,692	218,457
2009	58,795	4,077	43,493	5,103	111,468	27,935	0	76,513	0	104,448	215,916

Table 6. Catches of skipjack in the Pacific Ocean

YEAR	WESTERN AND CENTRAL PACIFIC OCEAN					EASTERN PACIFIC OCEAN					TOTAL
	LONGLINE	POLE-AND-LINE	PURSE SEINE	OTHER	SUBTOTAL	LONGLINE	POLE-AND-LINE	PURSE SEINE	OTHER	SUBTOTAL	
1960	0	70,428	3,728	15,782	89,938	0	28,929	16,649	481	46,059	135,997
1961	0	127,011	11,693	18,032	156,736	0	28,995	45,706	428	75,129	231,865
1962	4	152,387	11,674	17,559	181,624	0	17,660	58,939	503	77,102	258,726
1963	0	94,757	9,592	18,354	122,703	0	17,138	82,404	2,389	101,931	224,634
1964	5	137,106	25,006	20,801	182,918	0	10,306	51,759	3,609	65,674	248,592
1965	11	129,933	4,657	20,620	155,221	0	19,867	64,056	1,046	84,969	240,190
1966	50	215,600	10,949	22,913	249,512	0	14,083	50,264	1,960	66,307	315,819
1967	101	168,846	10,931	24,930	204,808	0	18,016	104,928	5,038	127,982	332,790
1968	60	162,379	7,587	24,929	194,955	0	7,340	59,642	10,128	77,110	272,065
1969	124	315,795	5,057	30,070	351,046	0	6,970	46,020	11,904	64,894	415,940
1970	1,260	379,074	10,585	32,164	423,083	0	7,470	47,466	7,234	62,170	485,253
1971	1,440	333,284	17,034	29,164	380,922	0	11,679	94,502	6,702	112,883	493,805
1972	1,524	172,827	21,664	41,783	237,798	0	6,556	29,804	1,144	37,504	275,302
1973	1,838	253,217	23,299	50,407	328,761	0	9,135	39,247	638	49,020	377,781
1974	2,088	289,202	15,630	49,528	356,448	0	7,629	79,418	510	87,557	444,005
1975	1,893	218,271	18,409	50,189	288,762	0	13,848	120,358	526	134,732	423,494
1976	2,056	276,582	28,495	51,216	358,349	0	11,256	124,957	705	136,918	495,267
1977	3,107	294,641	40,797	66,475	405,020	0	7,522	84,603	1,960	94,085	499,105
1978	3,219	331,401	44,109	73,644	452,373	0	6,047	172,294	1,324	179,665	632,038
1979	2,175	285,859	65,825	60,440	414,299	0	6,346	133,695	1,462	141,503	555,802
1980	630	333,457	82,700	42,819	459,606	0	5,225	130,912	1,965	138,102	597,708
1981	754	294,292	94,987	48,226	438,259	0	5,906	119,165	930	126,001	564,260
1982	1,013	262,244	173,901	53,084	490,242	0	3,760	100,499	410	104,669	594,911
1983	2,143	299,762	324,900	56,879	683,684	0	4,387	56,851	737	61,975	745,659
1984	867	379,474	337,471	44,278	762,090	0	2,884	59,859	868	63,611	825,701
1985	1,100	250,010	308,957	43,557	603,624	0	946	50,829	227	52,002	655,626
1986	1,434	336,695	368,138	49,135	755,402	0	1,921	65,634	190	67,745	823,147
1987	2,320	262,467	375,265	47,828	687,880	0	2,233	64,019	214	66,466	754,346
1988	1,930	301,031	497,052	49,141	849,154	0	4,325	87,113	689	92,127	941,281
1989	2,502	289,706	482,785	48,475	823,468	0	2,940	94,934	1,047	98,921	922,389
1990	358	224,592	603,347	73,185	901,482	0	823	74,369	1,915	77,107	978,589
1991	882	292,950	777,350	69,061	1,140,243	0	1,717	62,228	1,945	65,890	1,206,133
1992	431	251,717	725,134	62,898	1,040,180	0	1,957	84,283	1,054	87,294	1,127,474
1993	569	280,066	609,304	47,383	937,322	0	3,772	83,830	2,317	89,919	1,027,241
1994	353	227,921	756,558	58,859	1,043,691	0	3,240	70,126	804	74,170	1,117,861
1995	572	257,147	750,101	69,681	1,077,501	0	5,253	127,047	1,988	134,288	1,211,789
1996	3,874	211,408	769,438	68,696	1,053,416	0	2,555	103,973	1,313	107,841	1,161,257
1997	3,932	225,612	691,226	69,750	990,520	0	3,260	153,456	231	156,947	1,147,467
1998	4,904	244,447	1,015,686	77,578	1,342,615	0	1,684	140,631	531	142,846	1,485,461
1999	4,064	235,739	893,652	76,053	1,209,508	0	2,044	261,565	1,594	265,203	1,474,711
2000	4,516	216,458	929,185	94,369	1,244,528	68	231	204,307	67	204,673	1,449,201
2001	5,036	159,225	900,259	75,864	1,140,384	1,214	448	143,561	34	145,257	1,285,641
2002	3,376	150,933	1,085,024	77,458	1,316,791	261	616	153,303	119	154,299	1,471,090
2003	3,694	171,403	1,056,416	74,024	1,305,537	634	638	274,529	2,777	278,578	1,584,115
2004	3,841	154,161	1,180,937	63,314	1,402,253	713	528	198,664	1,105	201,010	1,603,263
2005	1,047	177,474	1,250,436	61,782	1,490,739	231	1,300	261,780	1,780	265,091	1,755,830
2006	1,470	155,484	1,343,575	58,888	1,559,417	224	435	297,408	986	299,053	1,858,470
2007	1,120	142,982	1,461,497	66,147	1,671,746	107	276	208,290	787	209,460	1,881,206
2008	775	144,064	1,408,379	67,043	1,620,261	55	499	296,648	1,163	298,365	1,918,626
2009	857	114,513	1,611,575	58,011	1,784,956	28	151	229,668	24	229,871	2,014,827

Table 7. Catches of yellowfin in the Pacific Ocean

YEAR	WESTERN AND CENTRAL PACIFIC OCEAN					EASTERN PACIFIC OCEAN					TOTAL
	LOGLINE	POLE-AND-LINE	PURSE SEINE	OTHER	SUBTOTAL	LOGLINE	POLE-AND-LINE	PURSE SEINE	OTHER	SUBTOTAL	
1960	55,020	1,872	1,438	15,337	73,667	5,934	22,151	79,425	458	107,968	181,635
1961	53,166	3,259	2,777	16,236	75,438	12,500	15,220	80,058	949	108,727	184,165
1962	55,547	4,225	6,975	17,197	83,944	10,211	11,052	56,271	706	78,240	162,184
1963	53,185	2,071	2,277	18,223	75,756	18,973	7,041	48,004	688	74,706	150,462
1964	45,241	5,074	3,647	20,186	74,148	16,975	3,989	78,318	738	100,020	174,168
1965	45,487	3,434	3,752	20,956	73,629	15,620	6,983	65,348	312	88,263	161,892
1966	61,623	2,192	5,844	23,409	93,068	9,097	5,302	68,982	507	83,888	176,956
1967	35,720	3,125	3,428	26,303	68,576	9,285	4,512	65,442	1,534	80,773	149,349
1968	45,572	2,706	7,106	26,085	81,469	14,986	4,307	86,542	3,241	109,076	190,545
1969	51,372	5,166	3,857	26,612	87,007	15,329	7,195	113,665	1,866	138,055	225,062
1970	55,481	4,606	9,322	29,422	98,831	12,643	4,260	139,385	4,850	161,138	259,969
1971	56,927	5,248	10,840	31,204	104,219	8,013	5,300	104,863	2,482	120,658	224,877
1972	60,251	7,465	11,759	35,749	115,224	16,859	6,060	164,297	1,060	188,276	303,500
1973	61,818	7,458	16,900	41,726	127,902	11,697	3,933	194,200	661	210,491	338,393
1974	57,490	6,582	19,574	46,997	130,643	7,190	8,188	191,626	1,230	208,234	338,877
1975	68,416	7,801	15,386	48,536	140,139	10,640	5,629	183,028	567	199,864	340,003
1976	76,363	17,186	17,076	40,666	151,291	15,632	3,280	215,108	358	234,378	385,669
1977	92,680	15,257	18,509	55,092	181,538	12,355	1,841	184,922	248	199,366	380,904
1978	108,555	12,767	14,260	38,491	174,073	10,188	3,888	158,801	1,103	173,980	348,053
1979	105,065	11,638	31,364	46,375	194,442	11,473	4,789	170,650	212	187,124	381,566
1980	120,373	13,168	35,701	43,906	213,148	13,477	1,481	143,042	862	158,862	372,010
1981	93,125	19,270	62,922	50,622	225,939	7,999	1,477	168,234	800	178,510	404,449
1982	84,014	13,835	74,989	48,226	221,064	10,961	1,538	114,755	280	127,534	348,598
1983	83,662	13,266	109,388	50,844	257,160	10,895	4,007	83,929	849	99,680	356,840
1984	70,258	13,558	118,800	53,698	256,314	10,345	2,991	135,785	344	149,465	405,779
1985	73,966	18,156	106,331	61,091	259,544	13,198	1,070	211,459	212	225,939	485,483
1986	62,614	13,074	110,362	64,673	250,723	22,808	2,537	260,512	214	286,071	536,794
1987	74,092	13,243	158,246	58,032	303,613	18,911	5,107	262,008	138	286,164	589,777
1988	84,802	13,433	99,169	65,704	263,108	14,660	3,723	277,293	752	296,428	559,536
1989	65,523	15,169	163,307	69,867	313,866	17,032	4,145	277,996	263	299,436	613,302
1990	69,493	13,103	179,195	79,196	340,987	34,633	2,676	263,253	960	301,522	642,509
1991	54,278	12,921	218,927	85,997	372,123	30,899	2,856	231,257	958	265,970	638,093
1992	69,198	15,225	239,362	52,899	376,684	18,646	3,789	228,121	1,958	252,514	629,198
1993	63,564	12,698	240,311	50,503	367,076	24,009	4,951	219,492	3,034	251,486	618,562
1994	69,474	13,743	218,335	69,486	371,038	30,026	3,625	208,408	1,487	243,546	614,584
1995	77,311	15,063	187,069	75,935	355,378	20,596	1,268	215,434	2,066	239,364	594,742
1996	74,049	15,479	116,789	80,738	287,055	16,608	3,762	238,607	1,639	260,616	547,671
1997	68,085	12,362	258,765	72,242	411,454	22,163	4,418	244,878	600	272,059	683,513
1998	62,503	13,110	264,857	84,607	425,077	15,336	5,085	253,959	1,529	275,909	700,986
1999	56,161	13,817	206,791	89,385	366,154	11,682	1,783	281,920	2,706	298,091	664,245
2000	66,825	18,179	231,458	88,584	405,046	23,855	2,431	255,231	1,109	282,626	687,672
2001	66,717	14,342	244,466	79,778	405,303	29,608	3,916	382,702	520	416,746	822,049
2002	69,526	13,297	212,491	87,791	383,105	25,531	950	412,507	549	439,537	822,642
2003	74,748	11,278	241,568	89,010	416,604	25,174	470	381,107	1,145	407,896	824,500
2004	75,300	11,787	217,854	78,834	383,775	18,779	1,884	269,597	627	290,887	674,662
2005	66,893	15,401	309,343	72,299	463,936	11,895	1,821	267,599	1,852	283,167	747,103
2006	63,566	13,966	267,707	74,037	419,276	9,117	686	166,330	1,458	177,591	596,867
2007	60,017	13,229	294,653	79,094	446,993	7,625	894	170,264	1,267	180,050	627,043
2008	63,450	11,332	394,626	76,961	546,369	6,722	812	185,087	911	193,532	739,901
2009	66,133	14,089	271,637	77,985	429,844	4,863	709	235,890	360	241,822	671,666

Table 8. Catches of albacore, bigeye, skipjack and yellowfin in the WCPO

YEAR	ALBACORE		BIGEYE		SKIPJACK		YELLOWFIN		TOTAL
	TONNES	%	TONNES	%	TONNES	%	TONNES	%	
1960	31,463	13	45,025	19	89,938	37	73,667	31	240,093
1961	32,922	11	39,380	13	156,736	51	75,438	25	304,476
1962	37,602	11	36,868	11	181,624	53	83,944	25	340,038
1963	26,815	10	44,346	16	122,703	46	75,756	28	269,620
1964	26,652	8	32,380	10	182,918	58	74,148	23	316,098
1965	28,724	10	31,329	11	155,221	54	73,629	25	288,903
1966	52,180	12	33,152	8	249,512	58	93,068	22	427,912
1967	55,403	15	35,907	10	204,808	56	68,576	19	364,694
1968	61,379	17	29,858	8	194,955	53	81,469	22	367,661
1969	71,137	13	34,156	6	351,046	65	87,007	16	543,346
1970	71,496	11	39,465	6	423,083	67	98,831	16	632,875
1971	96,125	15	41,662	7	380,922	61	104,219	17	622,928
1972	106,697	21	55,458	11	237,798	46	115,224	22	515,177
1973	129,538	20	46,839	7	328,761	52	127,902	20	633,040
1974	112,827	17	48,934	8	356,448	55	130,643	20	648,852
1975	83,864	15	65,223	11	288,762	50	140,139	24	577,988
1976	131,620	18	77,372	11	358,349	50	151,291	21	718,632
1977	79,436	11	76,788	10	405,020	55	181,538	24	742,782
1978	105,771	13	59,094	7	452,373	57	174,073	22	791,311
1979	84,878	11	66,372	9	414,299	55	194,442	26	759,991
1980	94,123	11	65,133	8	459,606	55	213,148	26	832,010
1981	86,385	11	53,346	7	438,259	55	225,939	28	803,929
1982	86,847	10	59,301	7	490,242	57	221,064	26	857,454
1983	64,112	6	59,896	6	683,684	64	257,160	24	1,064,852
1984	73,452	6	64,680	6	762,090	66	256,314	22	1,156,536
1985	76,034	8	68,706	7	603,624	60	259,544	26	1,007,908
1986	71,045	6	63,777	6	755,402	66	250,723	22	1,140,947
1987	60,625	5	79,269	7	687,880	61	303,613	27	1,131,387
1988	62,279	5	68,447	6	849,154	68	263,108	21	1,242,988
1989	69,949	5	77,237	6	823,468	64	313,866	24	1,284,520
1990	61,043	4	89,060	6	901,482	65	340,987	24	1,392,572
1991	56,509	3	71,297	4	1,140,243	70	372,123	23	1,640,172
1992	62,521	4	88,384	6	1,040,180	66	376,684	24	1,567,769
1993	71,762	5	77,506	5	937,322	64	367,076	25	1,453,666
1994	91,754	6	86,943	5	1,043,691	65	371,038	23	1,593,426
1995	89,912	6	79,941	5	1,077,501	67	355,378	22	1,602,732
1996	88,954	6	80,314	5	1,053,416	70	287,055	19	1,509,739
1997	109,867	7	110,402	7	990,520	61	411,454	25	1,622,243
1998	107,403	5	109,980	6	1,342,615	68	425,077	21	1,985,075
1999	127,451	7	112,076	6	1,209,508	67	366,154	20	1,815,189
2000	96,381	5	113,528	6	1,244,528	67	405,046	22	1,859,483
2001	114,599	6	104,828	6	1,140,384	65	405,303	23	1,765,114
2002	140,210	7	120,432	6	1,316,791	67	383,105	20	1,960,538
2003	111,806	6	110,752	6	1,305,537	67	416,604	21	1,944,699
2004	114,629	6	124,763	6	1,402,253	69	383,775	19	2,025,420
2005	97,434	4	115,863	5	1,490,739	69	463,936	21	2,167,972
2006	98,501	4	125,140	6	1,559,417	71	419,276	19	2,202,334
2007	121,027	5	118,550	5	1,671,746	71	446,993	19	2,358,316
2008	97,773	4	117,765	5	1,620,261	68	546,369	23	2,382,168
2009	117,690	5	111,468	5	1,784,956	73	429,844	18	2,443,958

Table 9. Catches of albacore, bigeye, skipjack and yellowfin in the EPO

YEAR	ALBACORE		BIGEYE		SKIPJACK		YELLOWFIN		TOTAL
	TONNES	%	TONNES	%	TONNES	%	TONNES	%	
1960	23,292	12	17,746	9	46,059	24	107,968	55	195,065
1961	15,862	6	52,642	21	75,129	30	108,727	43	252,360
1962	22,659	10	45,670	20	77,102	34	78,240	35	223,671
1963	29,799	11	66,757	24	101,931	37	74,706	27	273,193
1964	22,586	10	46,406	20	65,674	28	100,020	43	234,686
1965	17,939	8	29,395	13	84,969	39	88,263	40	220,566
1966	17,938	9	35,302	17	66,307	33	83,888	41	203,435
1967	22,524	8	38,880	14	127,982	47	80,773	30	270,159
1968	26,249	10	39,966	16	77,110	31	109,076	43	252,401
1969	22,646	8	53,164	19	64,894	23	138,055	50	278,759
1970	26,809	9	35,752	13	62,170	22	161,138	56	285,869
1971	24,517	8	34,256	12	112,883	39	120,658	41	292,314
1972	29,548	10	40,225	14	37,504	13	188,276	64	295,553
1973	18,763	6	54,355	16	49,020	15	210,491	63	332,629
1974	25,257	7	38,515	11	87,557	24	208,234	58	359,563
1975	23,051	6	48,343	12	134,732	33	199,864	49	405,990
1976	20,577	4	71,584	15	136,918	30	234,378	51	463,457
1977	24,024	6	85,249	21	94,085	23	199,366	50	402,724
1978	31,108	7	89,198	19	179,665	38	173,980	37	473,951
1979	10,953	3	67,533	17	141,503	35	187,124	46	407,113
1980	11,569	3	86,403	22	138,102	35	158,862	40	394,936
1981	20,283	5	68,344	17	126,001	32	178,510	45	393,138
1982	12,522	4	60,349	20	104,669	34	127,534	42	305,074
1983	15,729	6	64,694	27	61,975	26	99,680	41	242,078
1984	21,857	8	55,268	19	63,611	22	149,465	52	290,201
1985	14,841	4	72,398	20	52,002	14	225,939	62	365,180
1986	11,284	2	105,185	22	67,745	14	286,071	61	470,285
1987	12,977	3	101,347	22	66,466	14	286,164	61	466,954
1988	15,771	3	74,313	16	92,127	19	296,428	62	478,639
1989	9,501	2	72,994	15	98,921	21	299,436	62	480,852
1990	10,850	2	104,851	21	77,107	16	301,522	61	494,330
1991	11,481	3	109,121	24	65,890	15	265,970	59	452,462
1992	23,075	5	92,000	20	87,294	19	252,514	56	454,883
1993	15,605	4	82,190	19	89,919	20	251,486	57	439,200
1994	20,618	5	107,065	24	74,170	17	243,546	55	445,399
1995	14,075	3	104,959	21	134,288	27	239,364	49	492,686
1996	16,112	3	109,017	22	107,841	22	260,616	53	493,586
1997	17,279	3	116,872	21	156,947	28	272,059	48	563,157
1998	25,913	5	91,132	17	142,846	27	275,909	51	535,800
1999	26,464	4	88,146	13	265,203	39	298,091	44	677,904
2000	23,275	4	142,498	22	204,673	31	282,626	43	653,072
2001	33,336	5	129,930	18	145,257	20	416,746	57	725,269
2002	30,154	4	131,876	17	154,299	20	439,537	58	755,866
2003	45,538	5	113,971	13	278,578	33	407,896	48	845,983
2004	40,834	6	111,269	17	201,010	31	290,887	45	644,000
2005	24,564	4	111,283	16	265,091	39	283,167	41	684,105
2006	29,720	5	117,726	19	299,053	48	177,591	28	624,090
2007	27,797	5	93,046	18	209,460	41	180,050	35	510,353
2008	21,311	3	100,692	16	298,365	49	193,532	32	613,900
2009	21,993	4	104,448	17	229,871	38	241,822	40	598,134

Table 10. Catches of albacore, bigeye, skipjack and yellowfin in the Pacific Ocean

YEAR	ALBACORE		BIGEYE		SKIPJACK		YELLOWFIN		TOTAL
	TONNES	%	TONNES	%	TONNES	%	TONNES	%	
1960	54,755	13	62,771	14	135,997	31	181,635	42	435,158
1961	48,784	9	92,022	17	231,865	42	184,165	33	556,836
1962	60,261	11	82,538	15	258,726	46	162,184	29	563,709
1963	56,614	10	111,103	20	224,634	41	150,462	28	542,813
1964	49,238	9	78,786	14	248,592	45	174,168	32	550,784
1965	46,663	9	60,724	12	240,190	47	161,892	32	509,469
1966	70,118	11	68,454	11	315,819	50	176,956	28	631,347
1967	77,927	12	74,787	12	332,790	52	149,349	24	634,853
1968	87,628	14	69,824	11	272,065	44	190,545	31	620,062
1969	93,783	11	87,320	11	415,940	51	225,062	27	822,105
1970	98,305	11	75,217	8	485,253	53	259,969	28	918,744
1971	120,642	13	75,918	8	493,805	54	224,877	25	915,242
1972	136,245	17	95,683	12	275,302	34	303,500	37	810,730
1973	148,301	15	101,194	10	377,781	39	338,393	35	965,669
1974	138,084	14	87,449	9	444,005	44	338,877	34	1,008,415
1975	106,915	11	113,566	12	423,494	43	340,003	35	983,978
1976	152,197	13	148,956	13	495,267	42	385,669	33	1,182,089
1977	103,460	9	162,037	14	499,105	44	380,904	33	1,145,506
1978	136,879	11	148,292	12	632,038	50	348,053	28	1,265,262
1979	95,831	8	133,905	11	555,802	48	381,566	33	1,167,104
1980	105,692	9	151,536	12	597,708	49	372,010	30	1,226,946
1981	106,668	9	121,690	10	564,260	47	404,449	34	1,197,067
1982	99,369	9	119,650	10	594,911	51	348,598	30	1,162,528
1983	79,841	6	124,590	10	745,659	57	356,840	27	1,306,930
1984	95,309	7	119,948	8	825,701	57	405,779	28	1,446,737
1985	90,875	7	141,104	10	655,626	48	485,483	35	1,373,088
1986	82,329	5	168,962	10	823,147	51	536,794	33	1,611,232
1987	73,602	5	180,616	11	754,346	47	589,777	37	1,598,341
1988	78,050	5	142,760	8	941,281	55	559,536	33	1,721,627
1989	79,450	5	150,231	9	922,389	52	613,302	35	1,765,372
1990	71,893	4	193,911	10	978,589	52	642,509	34	1,886,902
1991	67,990	3	180,418	9	1,206,133	58	638,093	30	2,092,634
1992	85,596	4	180,384	9	1,127,474	56	629,198	31	2,022,652
1993	87,367	5	159,696	8	1,027,241	54	618,562	33	1,892,866
1994	112,372	6	194,008	10	1,117,861	55	614,584	30	2,038,825
1995	103,987	5	184,900	9	1,211,789	58	594,742	28	2,095,418
1996	105,066	5	189,331	9	1,161,257	58	547,671	27	2,003,325
1997	127,146	6	227,274	10	1,147,467	53	683,513	31	2,185,400
1998	133,316	5	201,112	8	1,485,461	59	700,986	28	2,520,875
1999	153,915	6	200,222	8	1,474,711	59	664,245	27	2,493,093
2000	119,656	5	256,026	10	1,449,201	58	687,672	27	2,512,555
2001	147,935	6	234,758	9	1,285,641	52	822,049	33	2,490,383
2002	170,364	6	252,308	9	1,471,090	54	822,642	30	2,716,404
2003	157,344	6	224,723	8	1,584,115	57	824,500	30	2,790,682
2004	155,463	6	236,032	9	1,603,263	60	674,662	25	2,669,420
2005	121,998	4	227,146	8	1,755,830	62	747,103	26	2,852,077
2006	128,221	5	242,866	9	1,858,470	66	596,867	21	2,826,424
2007	148,824	5	211,596	7	1,881,206	66	627,043	22	2,868,669
2008	119,084	4	218,457	7	1,918,626	64	739,901	25	2,996,068
2009	139,683	5	215,916	7	2,014,827	66	671,666	22	3,042,092

Table 11. Global catches of albacore, bigeye, skipjack and yellowfin

YEAR	ALBACORE		BIGEYE		SKIPJACK		YELLOWFIN		TOTAL
	TONNES	%	TONNES	%	TONNES	%	TONNES	%	
1960	130,229	20	88,048	13	155,782	23	293,249	44	667,308
1961	118,910	15	124,098	16	253,353	32	284,369	36	780,730
1962	157,011	19	124,222	15	286,687	34	274,099	33	842,019
1963	148,495	18	150,516	19	263,950	33	248,781	31	811,742
1964	159,228	19	120,296	14	287,607	34	277,314	33	844,445
1965	150,677	18	119,244	14	290,750	35	265,353	32	826,024
1966	160,716	17	117,633	13	370,217	39	291,029	31	939,595
1967	175,344	19	124,651	13	391,377	41	254,054	27	945,426
1968	177,358	17	130,898	13	354,614	35	362,147	35	1,025,017
1969	189,979	16	153,301	13	481,767	40	383,838	32	1,208,885
1970	181,735	14	143,005	11	578,403	45	374,803	29	1,277,946
1971	215,282	16	152,623	12	613,925	46	340,053	26	1,321,883
1972	230,934	19	161,257	13	389,030	32	440,137	36	1,221,358
1973	245,471	18	174,093	12	505,570	36	472,677	34	1,397,811
1974	237,374	16	178,185	12	615,370	41	486,652	32	1,517,581
1975	177,870	13	211,011	15	518,999	37	505,940	36	1,413,820
1976	244,303	15	222,139	14	615,413	38	553,889	34	1,635,744
1977	191,415	11	251,504	15	650,821	39	577,373	35	1,671,113
1978	228,259	13	250,437	14	782,297	43	540,018	30	1,801,011
1979	188,252	11	213,388	13	694,087	42	561,038	34	1,656,765
1980	181,267	10	249,639	14	764,193	44	549,925	32	1,745,024
1981	181,202	10	224,134	13	751,539	43	609,197	34	1,766,072
1982	197,399	11	236,400	13	809,155	45	573,003	32	1,815,957
1983	166,887	9	233,713	12	953,917	49	589,173	30	1,943,690
1984	172,108	8	234,562	11	1,066,845	51	628,037	30	2,101,552
1985	177,537	8	271,541	13	916,243	43	767,432	36	2,132,753
1986	203,813	8	291,578	12	1,096,568	45	830,100	34	2,422,059
1987	187,302	8	301,469	12	1,042,926	43	898,028	37	2,429,725
1988	174,642	7	282,757	11	1,287,178	48	911,251	34	2,655,828
1989	163,452	6	297,713	11	1,288,966	47	981,511	36	2,731,642
1990	174,024	6	352,271	12	1,352,884	46	1,077,773	36	2,956,952
1991	153,417	5	353,694	11	1,672,248	52	1,039,287	32	3,218,646
1992	177,065	5	351,527	11	1,584,029	49	1,109,697	34	3,222,318
1993	179,390	5	373,199	11	1,545,411	47	1,173,486	36	3,271,486
1994	208,640	6	436,741	13	1,644,871	48	1,113,405	33	3,403,657
1995	194,609	6	430,545	13	1,712,514	50	1,081,782	32	3,419,450
1996	195,607	6	438,793	13	1,631,533	49	1,044,578	32	3,310,511
1997	214,285	6	484,666	14	1,633,000	47	1,161,906	33	3,493,857
1998	230,234	6	453,470	12	1,977,744	52	1,160,340	30	3,821,788
1999	258,634	7	479,662	12	2,067,410	52	1,160,725	29	3,966,431
2000	228,550	6	489,247	13	2,025,867	52	1,156,514	30	3,900,178
2001	261,576	7	449,372	12	1,873,661	48	1,303,745	34	3,888,354
2002	265,134	6	470,135	11	2,075,707	50	1,303,729	32	4,114,705
2003	245,146	6	446,047	10	2,209,054	51	1,392,548	32	4,292,795
2004	240,655	6	460,713	11	2,222,087	53	1,303,934	31	4,227,389
2005	211,669	5	421,061	10	2,442,024	55	1,346,431	30	4,421,185
2006	225,581	5	426,555	10	2,606,627	60	1,105,874	25	4,364,637
2007	241,956	6	415,636	10	2,470,687	59	1,037,992	25	4,166,271
2008	208,902	5	393,177	9	2,491,066	59	1,160,264	27	4,253,409
2009	206,081	5	395,158	9	2,542,137	60	1,078,913	26	4,222,289

Table 12. Catches of albacore, bigeye, skipjack and yellowfin by ocean area. Estimates for the Atlantic Ocean and Indian Ocean for 2008 have been carried over from 2007.

YEAR	WCPO		EPO		ATLANTIC		INDIAN		TOTAL
	TONNES	%	TONNES	%	TONNES	%	TONNES	%	
1960	240,093	36	195,065	29	145,384	22	86,766	13	667,308
1961	304,476	39	252,360	32	135,230	17	88,664	11	780,730
1962	340,038	40	223,671	27	169,697	20	108,613	13	842,019
1963	269,620	33	273,193	34	188,394	23	80,535	10	811,742
1964	316,098	37	234,686	28	201,987	24	91,674	11	844,445
1965	288,903	35	220,566	27	222,199	27	94,356	11	826,024
1966	427,912	46	203,435	22	181,817	19	126,431	13	939,595
1967	364,694	39	270,159	29	184,929	20	125,644	13	945,426
1968	367,661	36	252,401	25	228,017	22	176,938	17	1,025,017
1969	543,346	45	278,759	23	236,694	20	150,086	12	1,208,885
1970	632,875	50	285,869	22	237,191	19	122,011	10	1,277,946
1971	622,928	47	292,314	22	290,958	22	115,683	9	1,321,883
1972	515,177	42	295,553	24	301,937	25	108,691	9	1,221,358
1973	633,040	45	332,629	24	304,880	22	127,262	9	1,397,811
1974	648,852	43	359,563	24	358,304	24	150,862	10	1,517,581
1975	577,988	41	405,990	29	302,119	21	127,723	9	1,413,820
1976	718,632	44	463,457	28	316,778	19	136,877	8	1,635,744
1977	742,782	44	402,724	24	372,569	22	153,038	9	1,671,113
1978	791,311	44	473,951	26	368,658	20	167,091	9	1,801,011
1979	759,991	46	407,113	25	338,014	20	151,647	9	1,656,765
1980	832,010	48	394,936	23	367,602	21	150,476	9	1,745,024
1981	803,929	46	393,138	22	416,733	24	152,272	9	1,766,072
1982	857,454	47	305,074	17	469,190	26	184,239	10	1,815,957
1983	1,064,852	55	242,078	12	430,504	22	206,256	11	1,943,690
1984	1,156,536	55	290,201	14	372,368	18	282,447	13	2,101,552
1985	1,007,908	47	365,180	17	429,982	20	329,683	15	2,132,753
1986	1,140,947	47	470,285	19	423,538	17	387,289	16	2,422,059
1987	1,131,387	47	466,954	19	403,643	17	427,741	18	2,429,725
1988	1,242,988	47	478,639	18	414,430	16	519,771	20	2,655,828
1989	1,284,520	47	480,852	18	424,384	16	541,886	20	2,731,642
1990	1,392,572	47	494,330	17	489,460	17	580,590	20	2,956,952
1991	1,640,172	51	452,462	14	539,051	17	586,961	18	3,218,646
1992	1,567,769	49	454,883	14	503,396	16	696,270	22	3,222,318
1993	1,453,666	44	439,200	13	554,088	17	824,532	25	3,271,486
1994	1,593,426	47	445,399	13	562,096	17	802,736	24	3,403,657
1995	1,602,732	47	492,686	14	514,855	15	809,177	24	3,419,450
1996	1,509,739	46	493,586	15	489,079	15	818,107	25	3,310,511
1997	1,622,243	46	563,157	16	452,083	13	856,374	25	3,493,857
1998	1,985,075	52	535,800	14	469,574	12	831,339	22	3,821,788
1999	1,815,189	46	677,904	17	502,204	13	971,134	24	3,966,431
2000	1,859,483	48	653,072	17	459,662	12	927,961	24	3,900,178
2001	1,765,114	45	725,269	19	484,624	12	913,347	23	3,888,354
2002	1,960,538	48	755,866	18	394,379	10	1,003,922	24	4,114,705
2003	1,944,699	45	845,983	20	424,528	10	1,077,585	25	4,292,795
2004	2,025,420	48	644,000	15	419,111	10	1,138,858	27	4,227,389
2005	2,167,972	49	684,105	15	399,555	9	1,169,553	26	4,421,185
2006	2,202,334	50	624,090	14	383,287	9	1,154,926	26	4,364,637
2007	2,358,316	57	510,353	12	367,237	9	930,365	22	4,166,271
2008	2,382,168	56	613,900	14	368,885	9	888,456	21	4,253,409
2009	2,443,958	58	598,134	14	291,741	7	888,456	21	4,222,289

Table 13. Commercial catches of billfish in the WCPFC Statistical Area, by gear type and species

YEAR	LONGLINE					PURSE SEINE		
	BLUE MARLIN	BLACK MARLIN	STRIPED MARLIN	SWORD-FISH	SUB-TOTAL	BLUE MARLIN	BLACK MARLIN	SUB-TOTAL
1962	14,197	2,091	15,207	10,354	41,849	0	0	0
1963	11,583	2,100	12,384	9,741	35,808	0	0	0
1964	10,240	1,697	17,023	5,942	34,902	0	0	0
1965	8,303	2,260	13,298	8,176	32,037	0	0	0
1966	8,763	2,408	9,648	9,821	30,640	0	0	0
1967	7,287	2,362	11,506	10,643	31,798	0	0	0
1968	6,673	2,951	11,783	9,504	30,911	0	1	1
1969	7,091	2,619	8,500	8,945	27,155	0	1	1
1970	9,977	3,544	7,594	7,578	28,693	6	14	20
1971	6,450	3,776	6,373	8,615	25,214	8	19	27
1972	7,957	3,696	5,194	8,110	24,957	9	20	29
1973	7,483	3,793	5,550	7,303	24,129	14	31	45
1974	7,253	3,115	4,788	7,990	23,146	7	17	24
1975	7,079	3,281	3,764	8,519	22,643	7	17	24
1976	6,710	2,242	3,497	9,955	22,404	6	16	22
1977	7,020	2,427	2,948	9,583	21,978	9	21	30
1978	8,861	2,787	3,744	9,871	25,263	8	20	28
1979	9,414	2,395	5,059	11,178	28,046	13	29	42
1980	10,245	1,552	4,823	8,740	25,360	13	29	42
1981	10,332	2,009	4,773	10,111	27,225	30	60	90
1982	10,398	2,023	4,536	9,214	26,171	42	90	132
1983	9,005	1,741	3,476	10,108	24,330	67	132	199
1984	12,197	1,317	4,836	9,975	28,325	86	161	247
1985	9,667	1,048	5,509	12,415	28,639	69	137	206
1986	10,348	1,121	6,175	11,473	29,117	66	128	194
1987	14,403	1,533	5,558	12,930	34,424	73	145	218
1988	14,553	2,294	7,613	12,804	37,264	71	142	213
1989	11,893	1,207	6,646	10,695	30,441	86	169	255
1990	10,200	1,120	4,871	11,470	27,661	95	184	279
1991	10,842	1,449	5,237	12,713	30,241	135	253	388
1992	13,302	1,650	5,363	18,322	38,637	141	241	382
1993	15,854	1,428	10,600	19,637	47,519	142	246	388
1994	15,609	1,844	6,189	17,057	40,699	141	239	380
1995	18,044	1,335	7,189	15,714	42,282	144	242	386
1996	14,526	945	5,834	15,177	36,482	160	263	423
1997	12,544	964	5,010	18,175	36,693	179	270	449
1998	16,449	1,545	7,080	19,299	44,373	182	267	449
1999	14,573	1,927	5,882	20,539	42,921	153	235	388
2000	13,474	1,144	4,264	20,961	39,843	184	273	457
2001	15,243	1,338	4,779	18,020	39,380	189	257	446
2002	15,165	1,625	4,375	18,606	39,771	205	278	483
2003	23,833	1,862	5,364	19,955	51,014	214	283	497
2004	21,361	2,061	5,085	21,561	50,068	226	293	519
2005	19,678	2,455	4,406	19,353	45,892	848	628	1,476
2006	18,405	2,113	4,327	22,515	47,360	611	399	1,010
2007	15,077	1,437	3,667	24,790	44,971	824	268	1,092
2008	14,416	1,536	3,005	22,041	40,998	592	442	1,034
2009	13,254	1,590	2,893	19,119	36,856	658	530	1,188

Table 13 continued

YEAR	OTHER COMMERCIAL GEARS					TOTAL
	BLUE MARLIN	BLACK MARLIN	STRIPED MARLIN	SWORD-FISH	SUB-TOTAL	
1962	1,023	65	0	38	1,126	42,975
1963	1,084	69	0	41	1,194	37,002
1964	1,187	73	2,366	1,203	4,829	39,731
1965	1,283	77	2,790	2,118	6,268	38,305
1966	1,379	82	1,676	1,934	5,071	35,711
1967	1,497	87	1,641	1,161	4,386	36,184
1968	1,528	92	1,255	1,883	4,758	35,670
1969	1,745	98	2,625	1,673	6,141	33,297
1970	1,850	125	1,184	1,895	5,054	33,767
1971	2,064	140	2,284	617	5,105	30,346
1972	2,154	146	1,369	436	4,105	29,091
1973	2,877	174	4,011	972	8,034	32,208
1974	3,238	201	3,930	1,789	9,158	32,328
1975	3,986	206	7,255	3,072	14,519	37,186
1976	3,603	175	4,163	4,138	12,079	34,505
1977	4,858	243	4,980	2,802	12,883	34,891
1978	3,604	156	6,035	2,855	12,650	37,941
1979	3,681	196	3,058	1,368	8,303	36,391
1980	3,631	177	4,008	2,308	10,124	35,526
1981	4,245	195	4,410	2,201	11,051	38,366
1982	3,904	175	2,997	1,643	8,719	35,022
1983	4,243	194	2,667	1,386	8,490	33,019
1984	3,536	211	3,060	1,420	8,227	36,799
1985	4,205	257	3,116	1,540	9,118	37,963
1986	4,045	268	4,181	1,633	10,127	39,438
1987	3,164	195	2,399	1,317	7,075	41,717
1988	3,750	222	2,880	1,552	8,404	45,881
1989	4,059	241	2,211	2,115	8,626	39,322
1990	5,251	342	2,489	1,388	9,470	37,410
1991	5,837	388	1,839	883	8,947	39,576
1992	3,046	218	1,515	1,393	6,172	45,191
1993	3,182	221	1,267	747	5,417	53,324
1994	4,673	289	1,824	924	7,710	48,789
1995	5,254	330	1,248	1,203	8,035	50,703
1996	5,688	339	912	1,260	8,199	45,104
1997	2,212	120	1,017	830	4,179	41,321
1998	2,365	138	1,421	1,082	5,006	49,828
1999	2,391	141	1,340	1,256	5,128	48,437
2000	1,558	96	1,380	1,404	4,438	44,738
2001	1,592	90	1,370	1,050	4,102	43,928
2002	1,611	99	1,587	1,452	4,749	45,003
2003	1,805	122	1,261	1,440	4,628	56,139
2004	1,825	126	1,466	1,383	4,800	55,387
2005	1,889	129	1,334	1,542	4,894	52,262
2006	1,937	142	1,308	1,447	4,834	53,204
2007	2,182	161	1,083	1,389	4,815	50,878
2008	3,608	186	1,430	1,218	6,442	48,474
2009	2,371	126	1,427	1,201	5,125	43,169

Table 14. Commercial catches of billfish in the WCPFC Statistical Area, by species

YEAR	BLUE MARLIN		BLACK MARLIN		STRIPED MARLIN		SWORDFISH		TOTAL
	TONNES	%	TONNES	%	TONNES	%	TONNES	%	
1962	15,220	35	2,156	5	15,207	35	10,392	24	42,975
1963	12,667	34	2,169	6	12,384	33	9,782	26	37,002
1964	11,427	29	1,770	4	19,389	49	7,145	18	39,731
1965	9,586	25	2,337	6	16,088	42	10,294	27	38,305
1966	10,142	28	2,490	7	11,324	32	11,755	33	35,711
1967	8,784	24	2,449	7	13,147	36	11,804	33	36,184
1968	8,201	23	3,044	9	13,038	37	11,387	32	35,670
1969	8,836	27	2,718	8	11,125	33	10,618	32	33,297
1970	11,833	35	3,683	11	8,778	26	9,473	28	33,767
1971	8,522	28	3,935	13	8,657	29	9,232	30	30,346
1972	10,120	35	3,862	13	6,563	23	8,546	29	29,091
1973	10,374	32	3,998	12	9,561	30	8,275	26	32,208
1974	10,498	32	3,333	10	8,718	27	9,779	30	32,328
1975	11,072	30	3,504	9	11,019	30	11,591	31	37,186
1976	10,319	30	2,433	7	7,660	22	14,093	41	34,505
1977	11,887	34	2,691	8	7,928	23	12,385	35	34,891
1978	12,473	33	2,963	8	9,779	26	12,726	34	37,941
1979	13,108	36	2,620	7	8,117	22	12,546	34	36,391
1980	13,889	39	1,758	5	8,831	25	11,048	31	35,526
1981	14,607	38	2,264	6	9,183	24	12,312	32	38,366
1982	14,344	41	2,288	7	7,533	22	10,857	31	35,022
1983	13,315	40	2,067	6	6,143	19	11,494	35	33,019
1984	15,819	43	1,689	5	7,896	21	11,395	31	36,799
1985	13,941	37	1,442	4	8,625	23	13,955	37	37,963
1986	14,459	37	1,517	4	10,356	26	13,106	33	39,438
1987	17,640	42	1,873	4	7,957	19	14,247	34	41,717
1988	18,374	40	2,658	6	10,493	23	14,356	31	45,881
1989	16,038	41	1,617	4	8,857	23	12,810	33	39,322
1990	15,546	42	1,646	4	7,360	20	12,858	34	37,410
1991	16,814	42	2,090	5	7,076	18	13,596	34	39,576
1992	16,489	36	2,109	5	6,878	15	19,715	44	45,191
1993	19,178	36	1,895	4	11,867	22	20,384	38	53,324
1994	20,423	42	2,372	5	8,013	16	17,981	37	48,789
1995	23,442	46	1,907	4	8,437	17	16,917	33	50,703
1996	20,374	45	1,547	3	6,746	15	16,437	36	45,104
1997	14,935	36	1,354	3	6,027	15	19,005	46	41,321
1998	18,996	38	1,950	4	8,501	17	20,381	41	49,828
1999	17,117	35	2,303	5	7,222	15	21,795	45	48,437
2000	15,216	34	1,513	3	5,644	13	22,365	50	44,738
2001	17,024	39	1,685	4	6,149	14	19,070	43	43,928
2002	16,981	38	2,002	4	5,962	13	20,058	45	45,003
2003	25,852	46	2,267	4	6,625	12	21,395	38	56,139
2004	23,412	42	2,480	4	6,551	12	22,944	41	55,387
2005	22,415	43	3,212	6	5,740	11	20,895	40	52,262
2006	20,953	39	2,654	5	5,635	11	23,962	45	53,204
2007	18,083	36	1,866	4	4,750	9	26,179	51	50,878
2008	18,616	38	2,164	4	4,435	9	23,259	48	48,474
2009	16,283	38	2,246	5	4,320	10	20,320	47	43,169

Table 15. Commercial catches of striped marlin and swordfish in the WCPFC Statistical Area north of the equator

YEAR	STRIPED MARLIN		SWORDFISH		TOTAL
	TONNES	%	TONNES	%	
1962	12,165	55	9,857	45	22,022
1963	9,550	51	9,029	49	18,579
1964	17,913	73	6,745	27	24,658
1965	14,194	60	9,377	40	23,571
1966	9,099	46	10,676	54	19,775
1967	11,802	52	10,920	48	22,722
1968	11,903	54	10,083	46	21,986
1969	10,107	51	9,694	49	19,801
1970	7,574	47	8,517	53	16,091
1971	6,572	47	7,290	53	13,862
1972	4,550	41	6,606	59	11,156
1973	7,496	53	6,769	47	14,265
1974	7,044	47	7,816	53	14,860
1975	9,788	48	10,406	52	20,194
1976	6,222	34	11,904	66	18,126
1977	7,021	38	11,643	62	18,664
1978	8,399	41	11,853	59	20,252
1979	6,605	37	11,011	63	17,616
1980	7,702	45	9,326	55	17,028
1981	7,200	42	10,047	58	17,247
1982	5,315	38	8,625	62	13,940
1983	4,948	33	10,133	67	15,081
1984	6,491	40	9,776	60	16,267
1985	7,312	38	11,990	62	19,302
1986	9,294	45	11,168	55	20,462
1987	6,629	36	11,903	64	18,532
1988	8,659	45	10,697	55	19,356
1989	6,510	39	10,262	61	16,772
1990	5,816	36	10,315	64	16,131
1991	5,769	34	11,179	66	16,948
1992	5,521	26	15,817	74	21,338
1993	10,364	37	17,600	63	27,964
1994	6,025	29	14,760	71	20,785
1995	6,550	32	13,962	68	20,512
1996	5,059	29	12,522	71	17,581
1997	4,329	24	13,694	76	18,023
1998	5,679	29	14,073	71	19,752
1999	4,936	25	15,022	75	19,958
2000	4,047	20	15,916	80	19,963
2001	4,331	25	12,794	75	17,125
2002	3,743	22	12,967	78	16,710
2003	3,962	21	14,468	79	18,430
2004	3,970	22	14,295	78	18,265
2005	3,466	21	13,081	79	16,547
2006	3,370	20	13,801	80	17,171
2007	2,817	16	14,436	84	17,253
2008	2,613	18	12,155	82	14,768
2009	2,582	18	11,528	82	14,110

Table 16. Commercial catches of striped marlin and swordfish in the WCPFC Statistical Area south of the equator

YEAR	STRIPED MARLIN		SWORDFISH		TOTAL
	TONNES	%	TONNES	%	
1962	3,042	85	535	15	3,577
1963	2,834	79	753	21	3,587
1964	1,473	79	397	21	1,870
1965	1,890	67	914	33	2,804
1966	2,139	67	1,044	33	3,183
1967	1,345	60	884	40	2,229
1968	1,135	47	1,304	53	2,439
1969	1,018	52	924	48	1,942
1970	1,204	56	956	44	2,160
1971	2,085	52	1,942	48	4,027
1972	2,013	51	1,940	49	3,953
1973	2,065	58	1,506	42	3,571
1974	1,674	46	1,963	54	3,637
1975	1,230	51	1,185	49	2,415
1976	1,438	40	2,189	60	3,627
1977	906	55	741	45	1,647
1978	1,380	61	873	39	2,253
1979	1,512	50	1,535	50	3,047
1980	1,129	40	1,722	60	2,851
1981	1,983	47	2,265	53	4,248
1982	2,219	50	2,232	50	4,451
1983	1,195	47	1,361	53	2,556
1984	1,406	46	1,619	54	3,025
1985	1,313	40	1,966	60	3,279
1986	1,060	35	1,938	65	2,998
1987	1,328	36	2,344	64	3,672
1988	1,833	33	3,655	67	5,488
1989	2,344	48	2,548	52	4,892
1990	1,535	38	2,543	62	4,078
1991	1,288	35	2,417	65	3,705
1992	1,305	25	3,898	75	5,203
1993	1,503	35	2,783	65	4,286
1994	1,988	38	3,230	62	5,218
1995	1,886	39	2,956	61	4,842
1996	1,687	30	3,915	70	5,602
1997	1,698	24	5,311	76	7,009
1998	2,761	30	6,309	70	9,070
1999	2,285	25	6,773	75	9,058
2000	1,597	20	6,449	80	8,046
2001	1,818	22	6,275	78	8,093
2002	2,219	24	7,091	76	9,310
2003	2,663	28	6,927	72	9,590
2004	2,453	23	8,045	77	10,498
2005	1,945	22	6,722	78	8,667
2006	1,909	18	8,951	82	10,860
2007	1,802	14	10,690	86	12,492
2008	1,916	15	10,453	85	12,369
2009	1,652	16	8,677	84	10,329

