



WPEA-SM Project Progress Report

**Sustainable Management of Highly Migratory Fish Stocks in the West
Pacific and East Asian Seas**

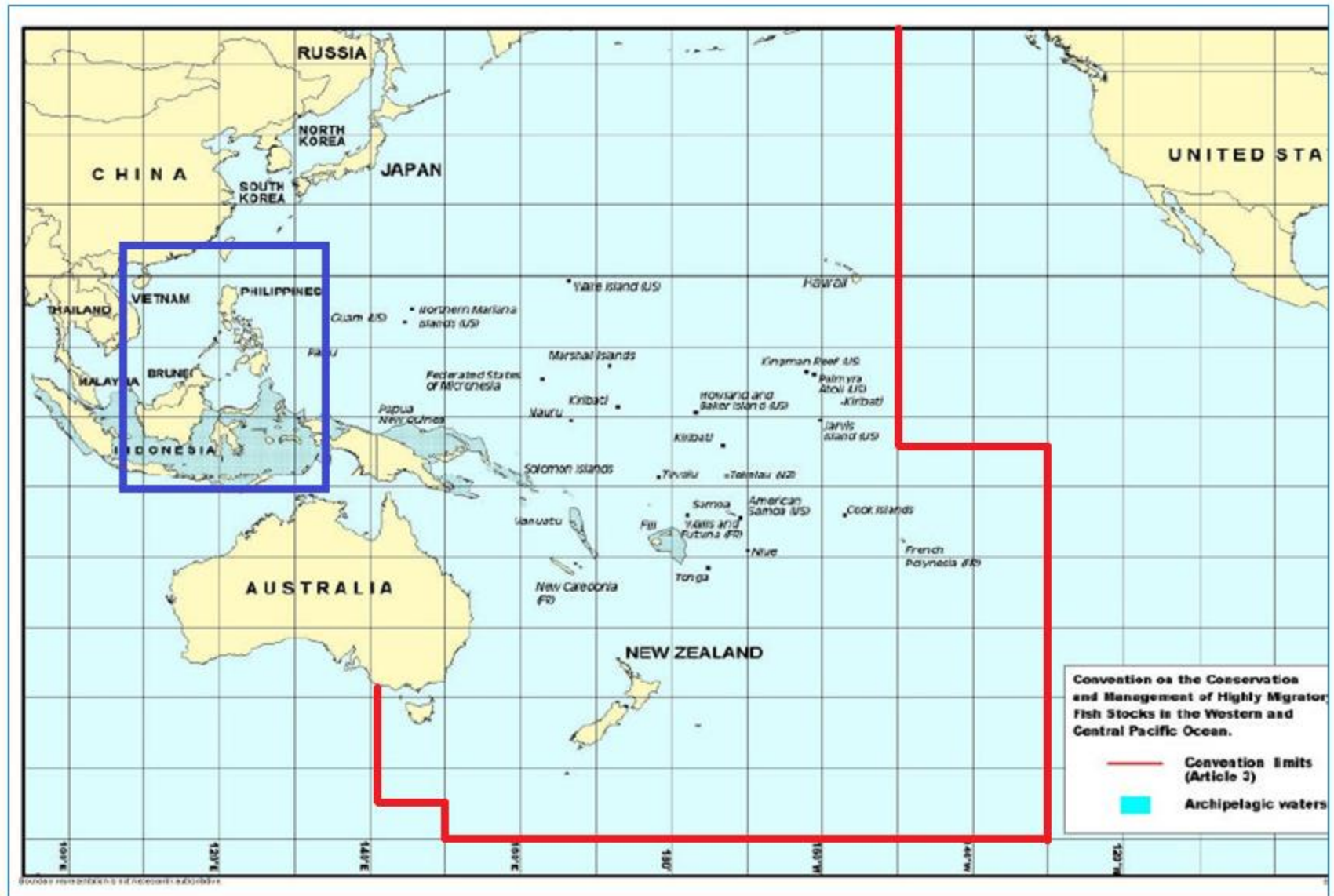
WCPFC Secretariat

WPEA Project Area (Indonesia, Philippines, Vietnam)



<http://www.wcpfc.int/west-pacific-east-asia-oceanic-fisheries-management-project>

WPEA Region in the WCPFC Convention Area



WPEA-SM Project – Introduction

Development of the WPEA-SM

- Funded by the Global Environment Facility (USD 2,233,578)
- implemented by the UNDP and WCPFC Secretariat

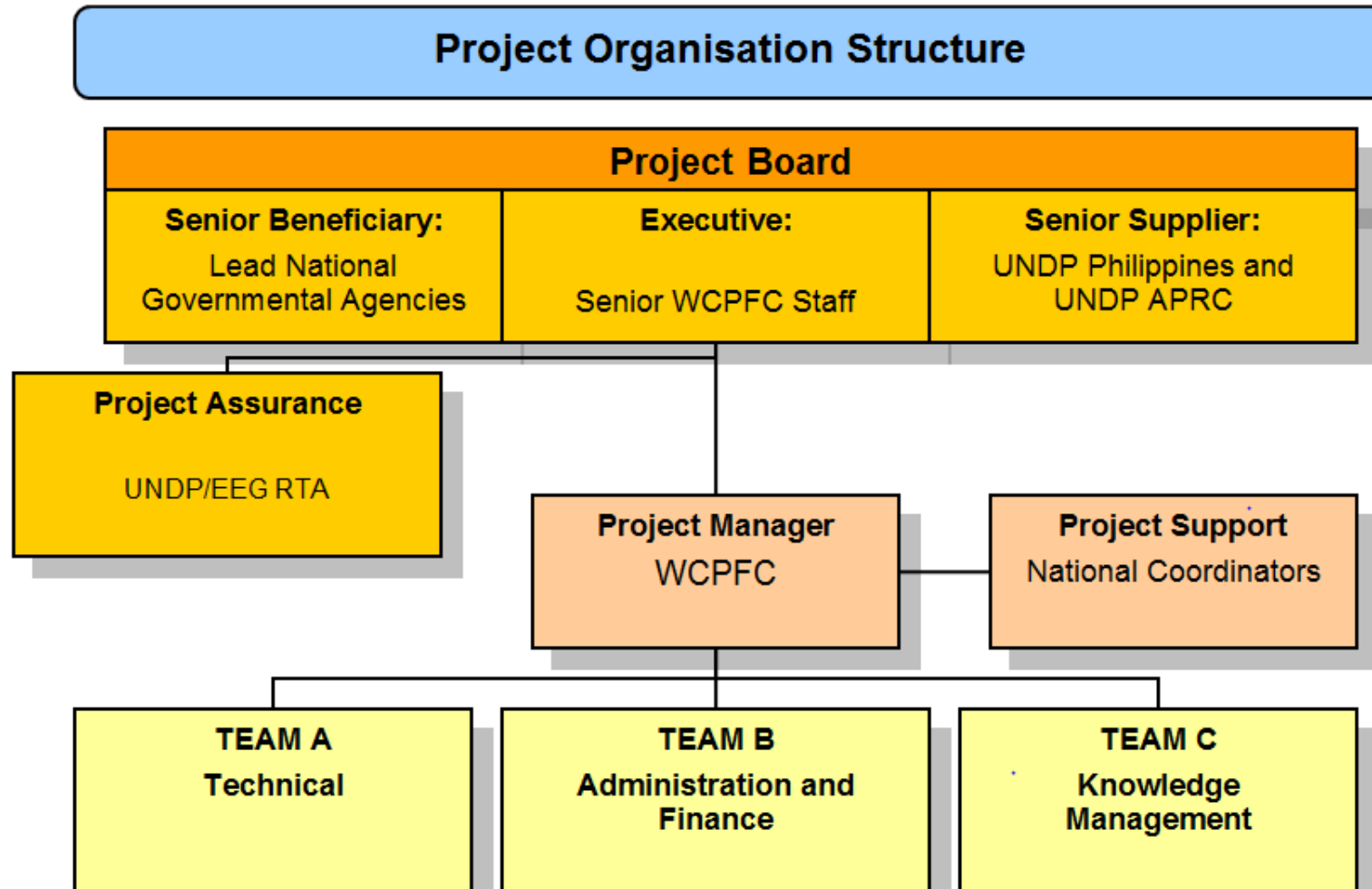
WPEA-SM Project Period

- Officially commenced on 28 October 2014 (3-years; 2015-2017)
- Project extended and the new termination date: 27 April 2018
- Reporting: Annual Reports, Quarterly Reports, Progress Implementation Reports

Independent Review of the WPEA-SM Project

- Scheduled during October - December 2018

WPEA-SM Project – Structure



WPEA – Key Activities

1. **Tuna catch data collection** from port sampling; annual total tuna catch estimation; logbook data collection, etc.
 - a. Indonesia and Vietnam – WPEA supports 65 enumerators hired for port sampling;
 - b. Philippines – government supports all data collection costs
2. **Capacity building** in science, compliance and management
 - a. Support participation in SC and TCC meetings, and SPC's Tuna Data Workshop
3. Development of guidelines on adaptive management and monitoring of HMS to address **climate change**
 - a. Develop national disaster risk reduction and management programme
 - b. Fishing ground forecasting

WPEA – Key Activities

4. **Market-based sustainability**
 - a. Characterizing tuna supply chain in each country
 - b. Establishing certification/eco-labeling system
5. Development of **reference points and harvest control rules** at national level
 - a. Indonesia is developing a harvest strategy framework for skipjack and yellowfin tuna in the archipelagic waters
6. Application of an **EAFM** to selected tuna fisheries
7. Risk assessments for bycatch
8. Updating *National Tuna Management Plan*, and *National Tuna Fishery Profile*
9. Review of legal, policy and institutional arrangements on Vietnamese tuna fisheries in light of WCPFC's requirements (partially funded by the JTF)

WPEA – Process

1. Most project targets were planned to achieve through consultancies and associated review workshops at each country.
2. Project Board meetings have been convened on an annual basis.
3. Three-country, sub-regional workshops have been held on an annual basis.
4. Since SC13, sixteen (16) workshops and meetings have been convened as of today in the three countries.

WPEA – Estimated 2017 Tuna Catches (mt)

INDONESIA (all gears)	Skipjack	%	Yellowfin	%	Bigeye	%	TOTAL
FMA _s 713,714,715	273.718	65%	137.501	33%	9.559	2%	420.778
FMA _s 716, 717	37.260	82%	7.459	16%	771	2%	45.490
TOTAL (FAO 71)	310.978	67%	144.960	31%	10.330	2%	466.268

PHILIPPINES	SKJ		YFT		BET		TOTAL
	MT	%	MT	%	MT	%	MT
Purse Seine	124,581	72%	44,146	26%	3,994	2%	172,724
HOOK-AND-LINE	13,780	25%	38,778	71%	1,800	3%	54,395
OTHERS	4,878	52%	4,187	45%	335	4%	9,401
TOTAL	143,240	61%	87,111	37%	6,129	3%	236,483

* PS catch includes catches from PH flag distant water fleet

VIETNAM	Skipjack	Yellowfin	Bigeye	Albacore	TOTAL
Longline/Handline	0	15,677	1,004	N/A	16,681
Purse Seine	46,014	6,170	2,508	N/A	54,692
Gillnet	40,281	560	411	N/A	41,252
TOTAL	86,295	22,407	3,923	N/A	112,625

Status of WPEA-Improved Tuna Monitoring Project

1. The government of New Zealand has provided funding for the WPEA-ITM project.
2. Project components
 - expanding the capacity of Enumerator Programs
 - build the capacities and sustainability of fisheries observer programs,
 - support additional national policy and legal reviews to improve tuna fisheries catch monitoring and governance
 - add to the capacities of national fisheries data management and analysis efforts.
3. Project Manager: Mr Dale Withington and the project is to be completed in early 2022.

Status of WPEA-Improved Tuna Monitoring Project

4. Full implementation of the new project has not yet eventuated due to delays in official approval at each country but limited activities have been already commenced.
5. An MOU between WCPFC and SPC has been signed regarding SPC involvement and support for the new project.
6. A Project Steering Committee Meeting scheduled for later in 2018 will review and finalize decisions about country recommendations for changes in the Project's Activities, Targets, Indicators and Budget to ensure full implementation in 2019.

WPEA-SM Project Board Meeting Philippines, 8-9 December 2017

UNDP (Regional, National Office), WCPFC, technical experts,
and three participating countries





Vietnam

Philippines

Indonesia

Thank you...