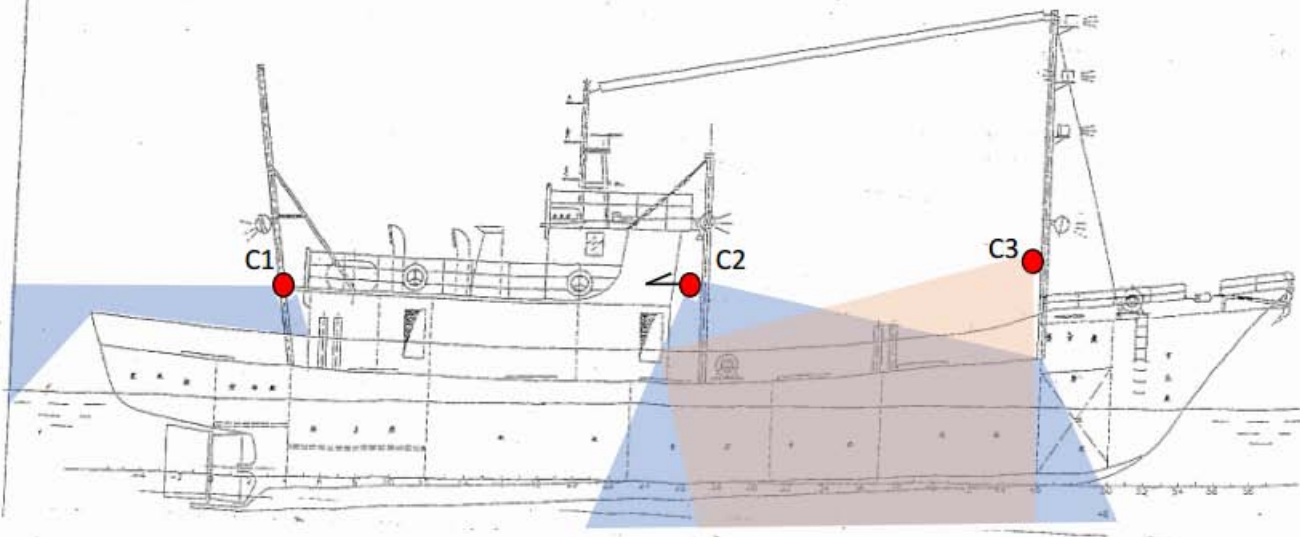


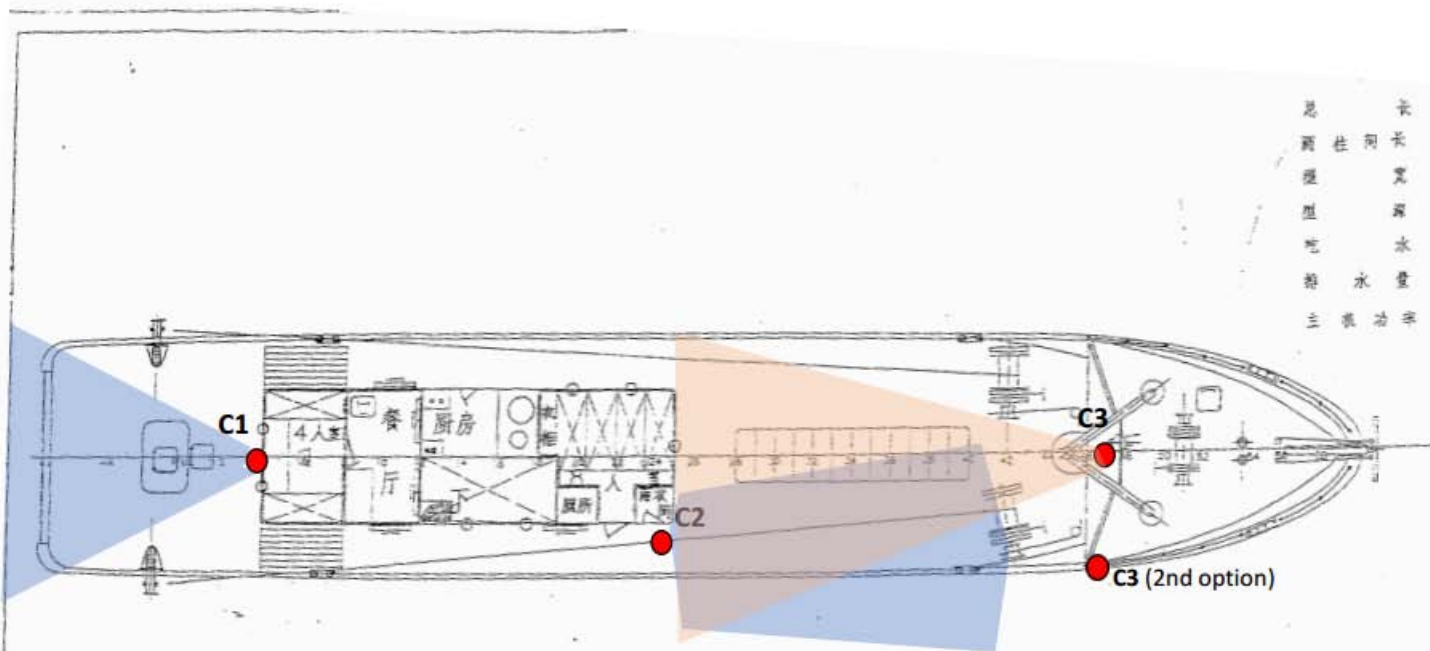
FIJI ELECTRONIC MONITORING SYSTEMS – FIJI ABNJ TP PROJECT

FAO - GEF & MOFF

PILOT TRIALS FOR ELECTRONIC MONITORING
SYSTEMS [EMS] ON FIJI LONG LINE VESSELS.



LENGTH O.A	27.5m
LENGTH B.D	27.5m
MOLDED BREADTH	6.0m
MOLDED DEPTH	2.7m
DRAFT	2.1m
DISPLACEMENT	194.88t
MAIN ENGINE	257KW



总长	33.8m
船长	27.5m
型宽	6.0m
型深	2.7m
吃水	2.1m
排水量	194.88
主机功率	257KW

ACRONYMES

- FAO - FOOD AND AGRICULTURE ORGANISATION
- GEF - GLOBAL ENVIRONMENTAL FACILITY
- EMS - ELECTRONIC MONITORING SYSTEMS
- ABNJ - AREAS BEYOND NATIONAL JURISDICTIONS
- LOA –MINISTRY OF FISHERIES & FORESTS LOA – LETTER OF AGREEMENT [FAO & MOFF]
- MoF - MINISTRY OF FISHERIES
- FFIA – FIJI FISHING INDUSTRY ASSOCIATION
- COATP – COMMON OCEANS ABNJ TUNA PROJECT
- WCPFC – WESTERN AND CENTRAL PACIFIC FISHERIES COMMISSION
- SPC – SECRETARIATE FOR THE PACIFIC COMMUNITY
- FFA – PACIFIC ISLANDS FORUM FISHERIES AGENCY



BACKGROUND

COMMON OCEANS AREAS BEYOND NATIONAL JURISDICTION TUNA PROJECT

FOOD AND AGRICULTURE ORGANISATION OF THE UNITED NATION [“FAO”] AND THE FIJI MINISTRY OF FISHERIES [“MOF/SERVICE PROVIDER”]

PROJECT TITLE:

- Pilot trials of Electronic Observer Systems [EMS] aboard tuna long line vessel in Fiji of the FAO-GEF Project “Sustainable Management of Tuna Fisheries and Biodiversity Conservation in the ABNJ” OR “Common Oceans ABNJ Tuna Project”.

2010 FAO PROPOSAL

- SPC/FFA/DoF/Industry Stakeholders
- Ghana [PS] & Fiji [LL]

2012 FAO GEF– COMMON OCEANS PROGRAM

- COATP - Largest of 4 ABNJ projects
- 2nd Component: Strengthening and Harmonizing Monitoring Control and Surveillance (MCS) to Address IUU.
- Outcome 2.2: The number of illegal vessels in one t-RFMO is to be reduced by 20% from the baseline at project start.
- Outcome 2.2.1: Pilot trials of electronic observer systems aboard tuna long line vessels successfully completed in Fiji with lessons learned and best practices disseminated to all t-RFMOs for up-scaling.

PURPOSE OF PROJECT

- Lessons learnt and best practices will be disseminated to sub-regional organization and t-RFMOs for up-scaling.
- Vital tool in combatting the IUU phenomenon via MCS strengthening and harmonization.



FIJI ABNJ – TP PILOT PROJECT

COMMON OCEANS AREAS BEYOND NATIONAL JURISDICTION TUNA PROJECT

FIJI ABNJ – TP EMS PILOT PROJECT

FIJI NATIONAL LONGLINE FLEET

- LICENSE [60] & ABNJ AUTHORISATION [29]
- SIZE CLASS [9/45/30]
- TARGET SPECIES

EMS OPERATIONAL ASPECTS

- INSTALLATION PROCESS
- [EMS VESSEL INSTALLATION](#)
- MoU MoF & FFIA
- EQUIPMENT MAINTENANCE
- EMS COVERAGE [90% FJ LIC. FLEET]

DATA ANALYSIS & REPORTING

- DATA PROCESSES
- DATA ANALYSIS
- SVM SYSTEM
- GEAR SETTING/HAULING
- SPECIES IDENTIFICATION
- DATA CONVERSION
- REPORTING FORMAT

COMPLIANCE CASES

- WCPFC CMMs
- SHARK + FAL + OCS + OBS + SEA BIRDS
- OFMD2012 & OFMD 2014
- TRANSHIPMENT AND PROVISIONING
- OBSERVER OBSTRUCTION
- CATCH DICREPANCY
- UNLICENSED CATCH [SNAPPERS]

PROJECT EXECUTION

THE WAY FORWARD

1. WHAT IS THE PROJECT TRYING TO ACHIEVE?

- MCS – COMPLIANCE TOOL
- OFMD2012 + OFMR2014 + FPN
- WCPFC CMM
- AGREEMENTS [MARPOL]
- LINE MINISTRIES

2. WHO ARE THE KEY PLAYERS?

- NATIONAL LEVEL

THE INDUSTRY STAKEHOLDER
(FFIA)/SGO/FINANCE/MARITIME AUTHORITY/FOREIGN
AFFAIRS/FISHERIES

- REGIONAL LEVEL & INTERNATIONAL

SPC/FFA/WCPFC/UNFAO/SATLINK INT./DOS/OTHER
SERVICE PROVIDERS

3. HOW ARE WE GOING TO DEVELOP THE PROJECT/EMS TOOL?

A. NATIONALLY

1. STAKEHOLDER CONSULTATIONS - LINE MINISTRIES AND INDUSTRY [BUDGET+LEGAL REVIEW+BUSINESS CASE+SERVICE PROVIDER+IMPLEMENTATION]
2. TRACEABILITY WORKSHOP [FFIA-MoH]
3. DATA QUALITY CHECKS [SPC/SATLINK]
4. VESSEL PERFORMANCE - LICENSE CONDITION [TSF]
5. PRODUCT QUALITY AND MARKET ACCESS
6. EM SUB-REGIONAL WORKSHOP

B. REGIONAL & INTERNATIONAL INVOLVEMENT

1. ENGAGEMENT WITH REGIONAL PLATFORMS [SPC/FFA]
2. PARTICIPATION IN REGIONAL/INTERNATIONAL WORKSHOPS
3. ENGAGE WITH OTHER EMS PROGRAMS

PROJECT EXECUTION

THE WAY FORWARD

5. WHAT NEEDS TO HAPPEN FOR THE EMS TOOL TO CONTINUE?

- STAKEHOLDER - FFIA PERSPECTIVE/STORAGE UNIT
- LINE MIN. PARTICIPATION – CROSS CUTTING
- LEGAL INSTRUMENTS
- DEVELOP OBSERVER POLICIES AND REPORTS
- RECRUITMENT EMS/EMS ANALYSIS-DEBRIEFING: SOPs
- REMUNERATION POLICIES
- DEVELOP THE DORADO TOOL
- ONE ANALYST: ONE REPORT
- OBSERVER END GAME
- REGIONAL STANDARDS AND POLICIES
- ACCREDITATION OF PROGRAM/ANALYST/DEBRIEFER
- DEBRIEFING/AUDITING STANDARDS [50%/20%] – FJ CASE
- COVERAGE LEVELS [DEFINE IT?]
- SYSTEM UPGRADES
- SOFTWARE
- HOOK CONSISTENCY
- MAPPING TOOL
- EMS ANALYST – IT/COMPETENCE TRAINING
- NATIONAL/REGIONAL REVIEW CENTERS
- ACCREDITATION/CAPACITY
- PROTOCOL DEVELOPMENTS
- SPC & FFA
- VESSEL COVERAGE ALLOCATION LIST
- OTHER SERVICE PROVIDERS

6. WHAT OTHER THINGS COULD EMS DO?

IF IT CAN BE DONE, IT CAN BE DONE!

- CMM DEVELOPMENT [SHARKS/SEABIRD ETC.]
- VMS SUBSTITUTE/HYBRID?
- HUMANE TREATMENT/MITIGATION MEASURES
[CREW/FISH]
- UNDERSTANDING FISHING PRACTISES [SEA MOUNTS/UNUSAL SETTING]
- LICENSE CONDITIONS [TARGET SPECIES (70% - 30%)/CATCH (SNAPPER)/PROHIBITED AREAS/GEO FENCING]
- OBSERVER QUALITY CHECKS/PERFORMANCE [DEBRIEFERS]
- CROSS REFERENCEING WITH LOGSHEETS/LANDINGS/PORT SAMPLING
- TRACEABILITY AND PORT MONITORING
- MEET MSC/EU STANDARDS
- INDUSTRY STAKEHOLDERS - CONTROL [HANDLING]
- SET/HAUL STANDARDS
- OBSERVER/CREW SAFETY



FIJI ELECTRONIC MONITORING – FIJI ABNJ TP PROJECT

COMMON OCEANS AREAS BEYOND NATIONAL JURISDICTION TUNA PROJECT
