



FFA

Analysis and projections of economic conditions in the WCPO fisheries

**Fourteenth Regular Session of the WCPFC
Scientific Committee**

SC14-ST-WP-04; Busan, Republic of Korea

8-16 August 2018

Maggie Skirtun and Chris Reid



FFA

Background

- In 2016, SC12 recommended that an annual update of *Analyses and projections of economic conditions in WCPO fisheries*, be provided at future SC meetings
- The paper looked at economic conditions, which impact on the financial viability of vessels and the returns generated in a fishery, for the 3 key fisheries of the WCPO – the southern and tropical longline fisheries and the purse seine fishery
- Components of the economic conditions index:
 - Fish prices
 - Fishing costs (excl. license and access fee payments)
 - Catch rates
- Here the indexes are updated and projected forward



FFA

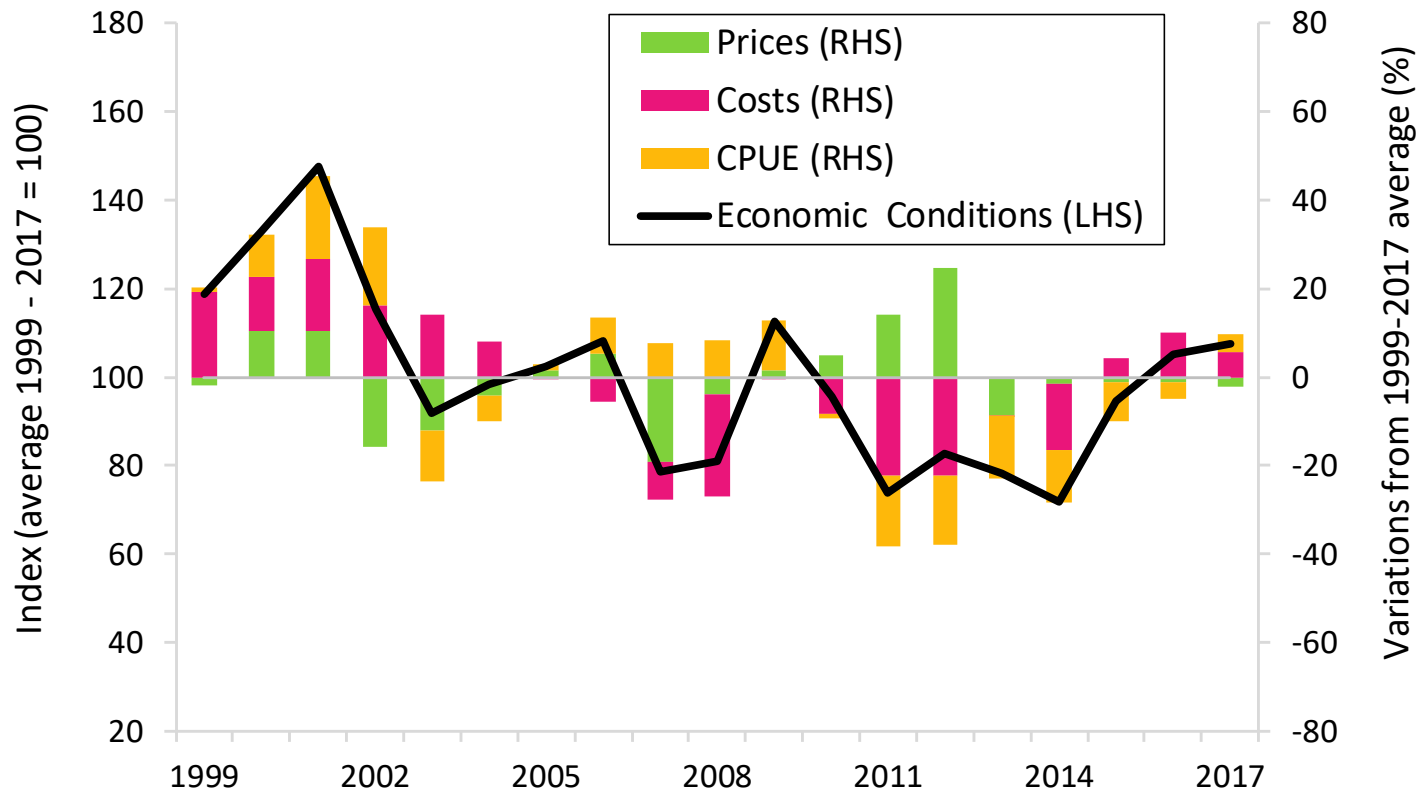
Interpreting indexes

- Indexes are interpreted against their average in the reference period (1999-2017 average = 100)
- Values less than 100 suggest below average (1999-2017) performance while values above 100 suggest better than average conditions
- The economic conditions index illustrates the relative prevailing environment with regards to the generation of economic returns in the fishery. It does not address the absolute level of returns generated or how they are distributed



FFA

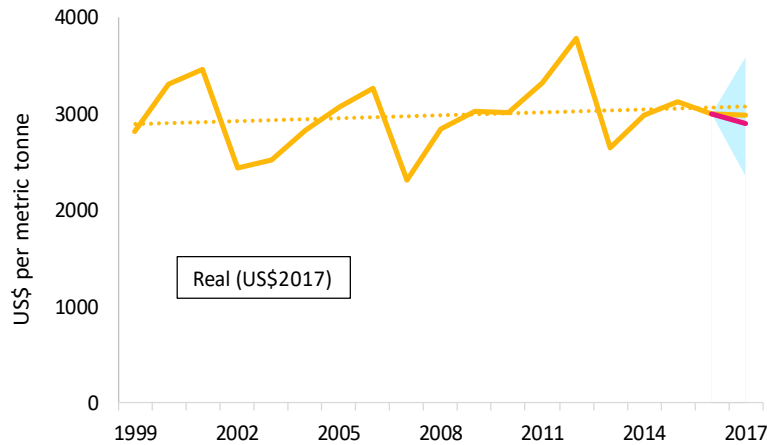
The southern longline fishery



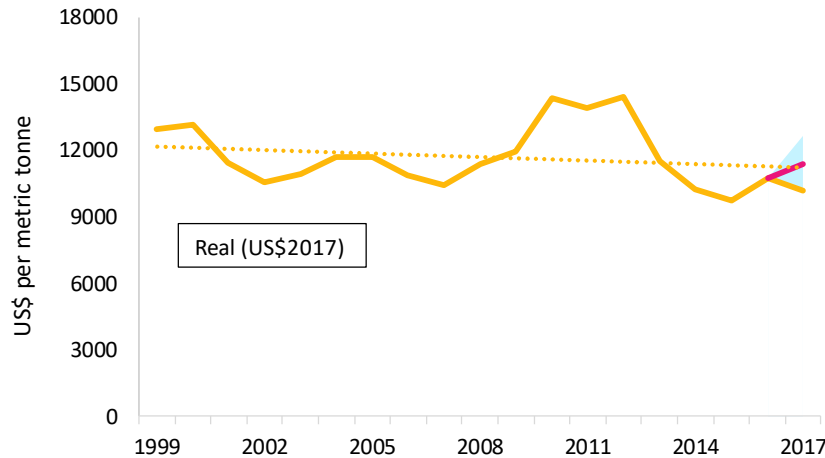


FFA

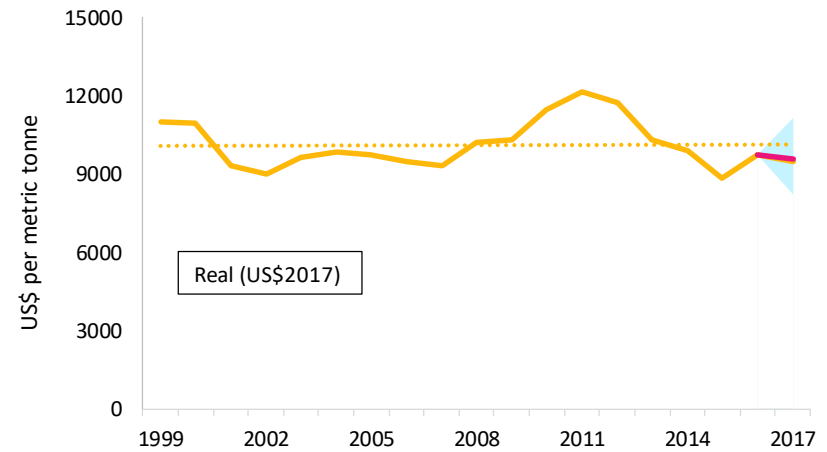
Longline fish prices and fuel costs



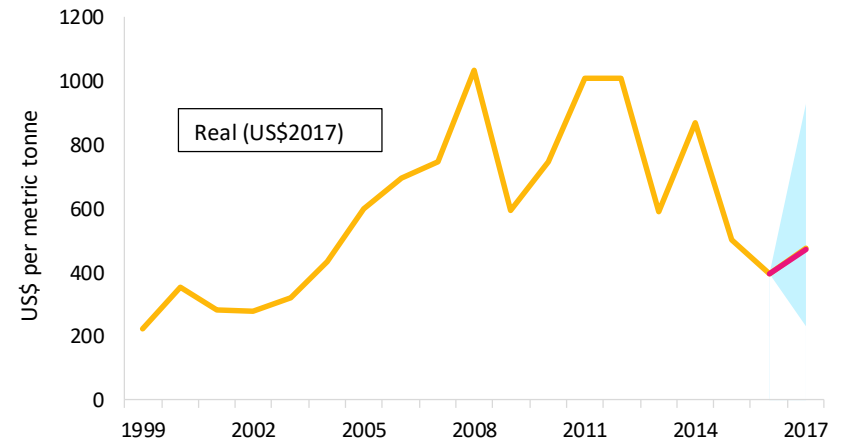
USD real and forecasted prices for imports of albacore into Thailand



USD real and forecasted prices for Japanese bigeye imports from Oceania



USD real and forecasted prices for Japanese yellowfin imports from Oceania

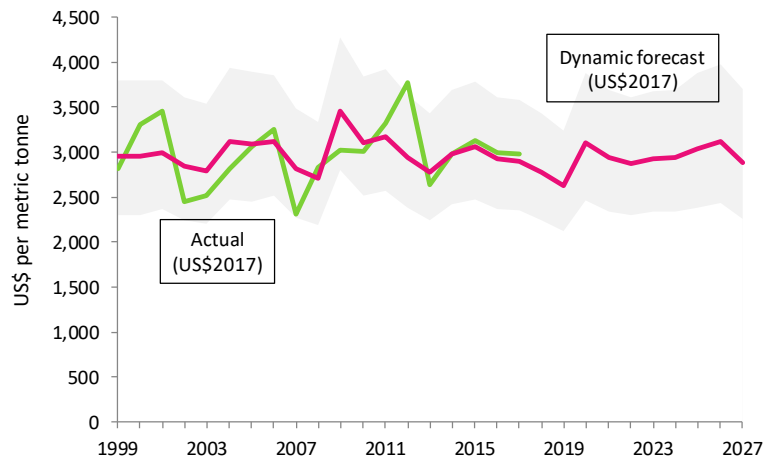


Singapore marine diesel oil (MDO) nominal and real price series

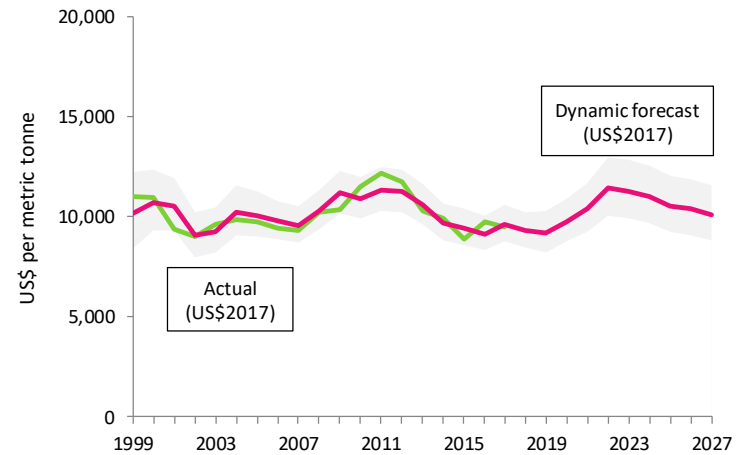


FFA

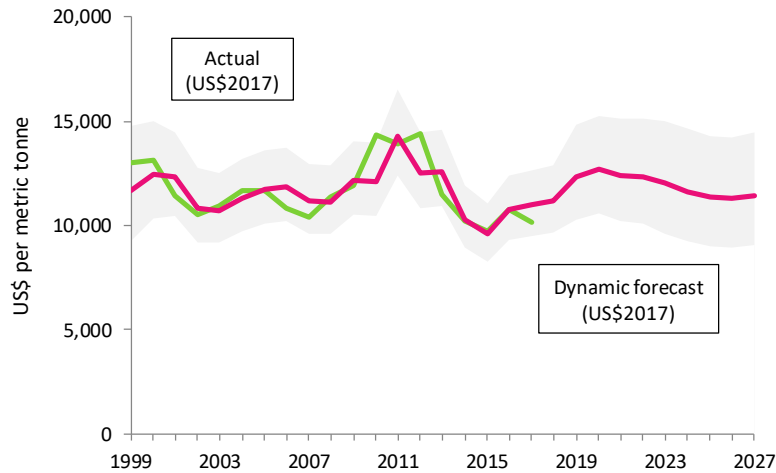
Longline price and fuel forecasts



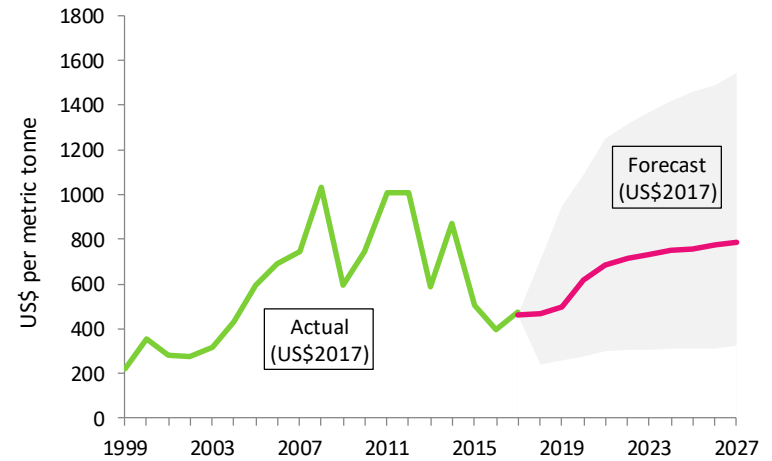
Projections of USD real prices for imports of albacore into Thailand



Projections of USD real prices for Japanese yellowfin imports from Oceania



Projections of USD real prices for Japanese bigeye imports from Oceania

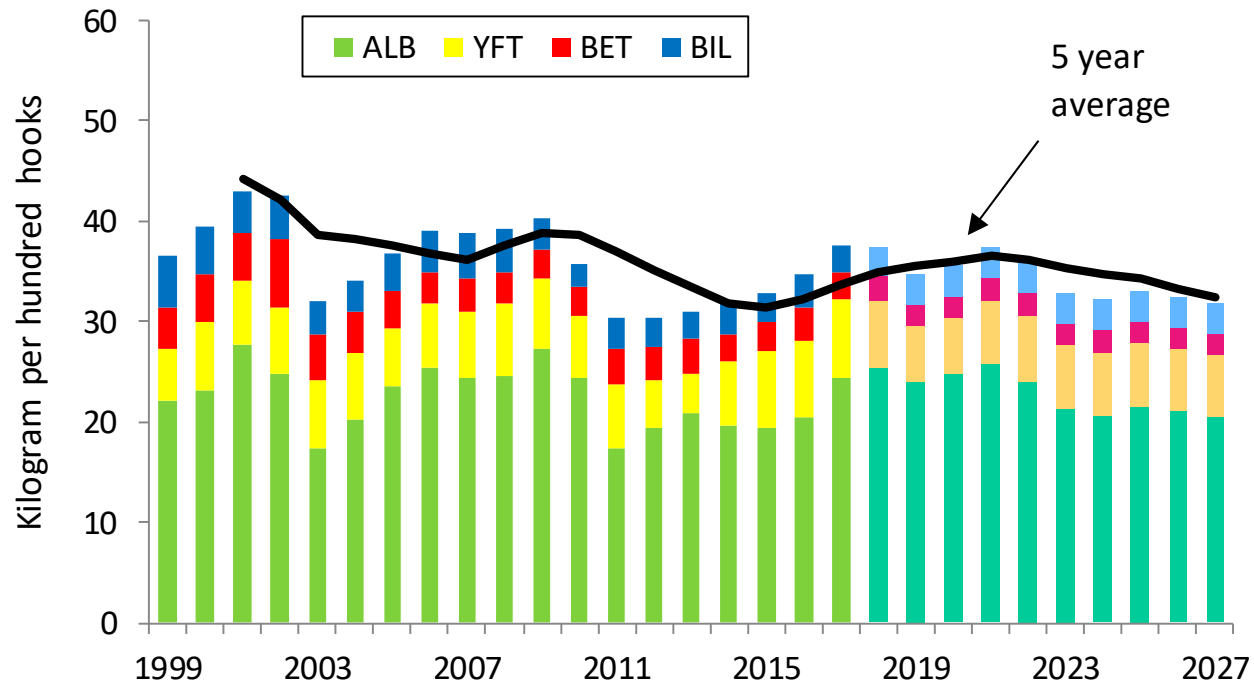


Projections of Singapore marine diesel oil (MDO) in real prices



FFA

Catch rates in the SLL fishery

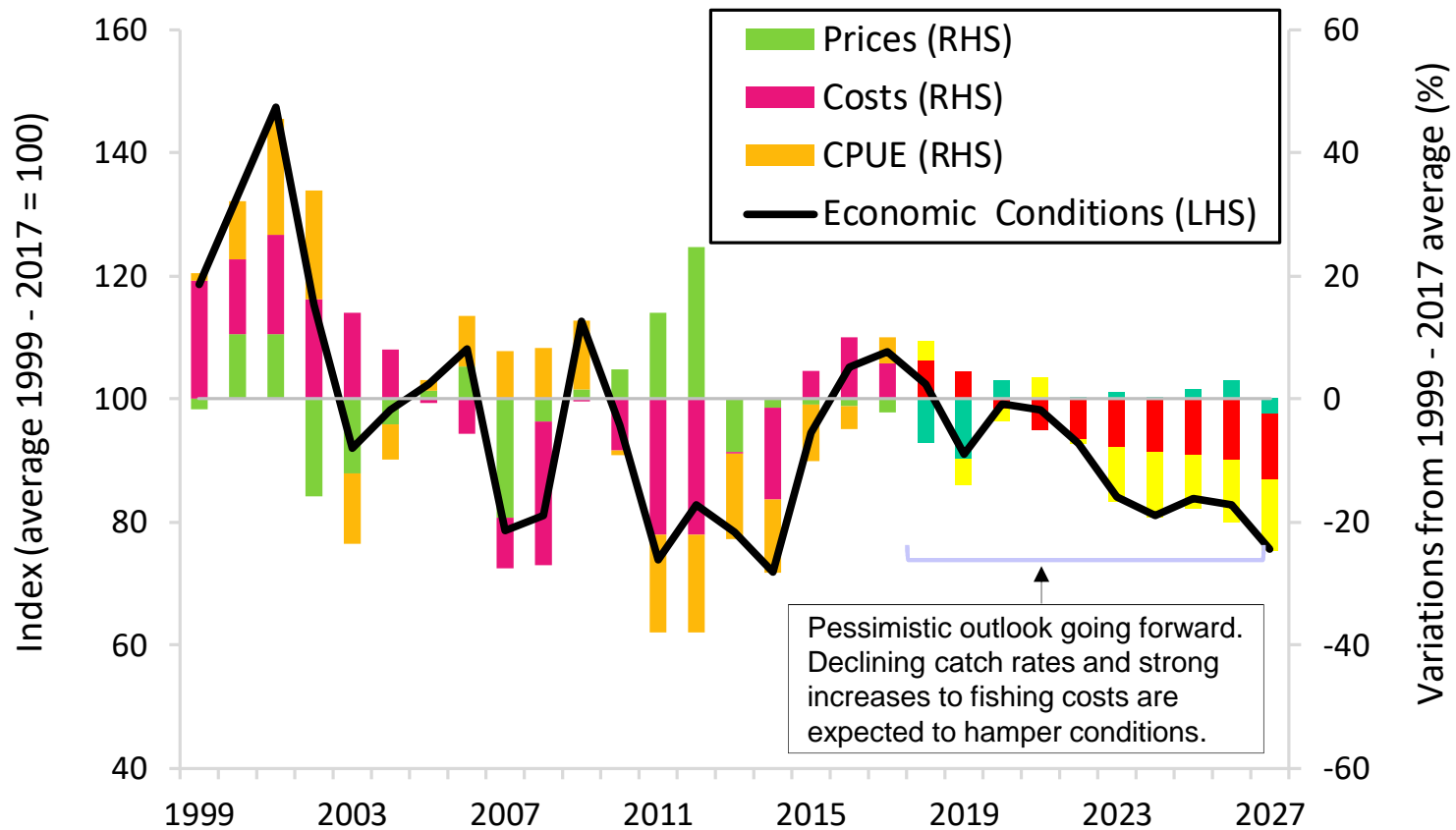


Projections of CPUE in the southern longline fishery by species



FFA

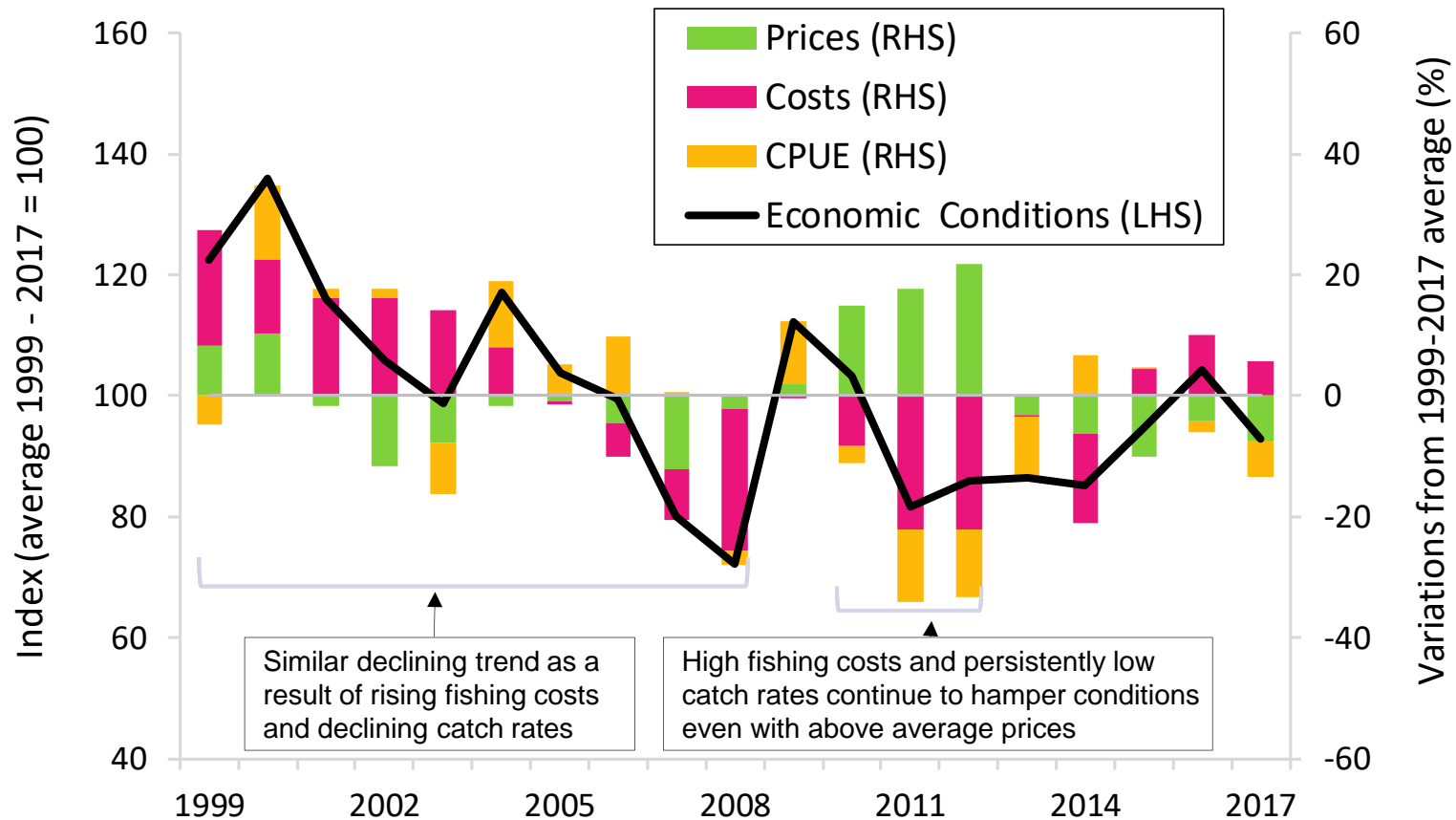
The southern longline fishery





FFA

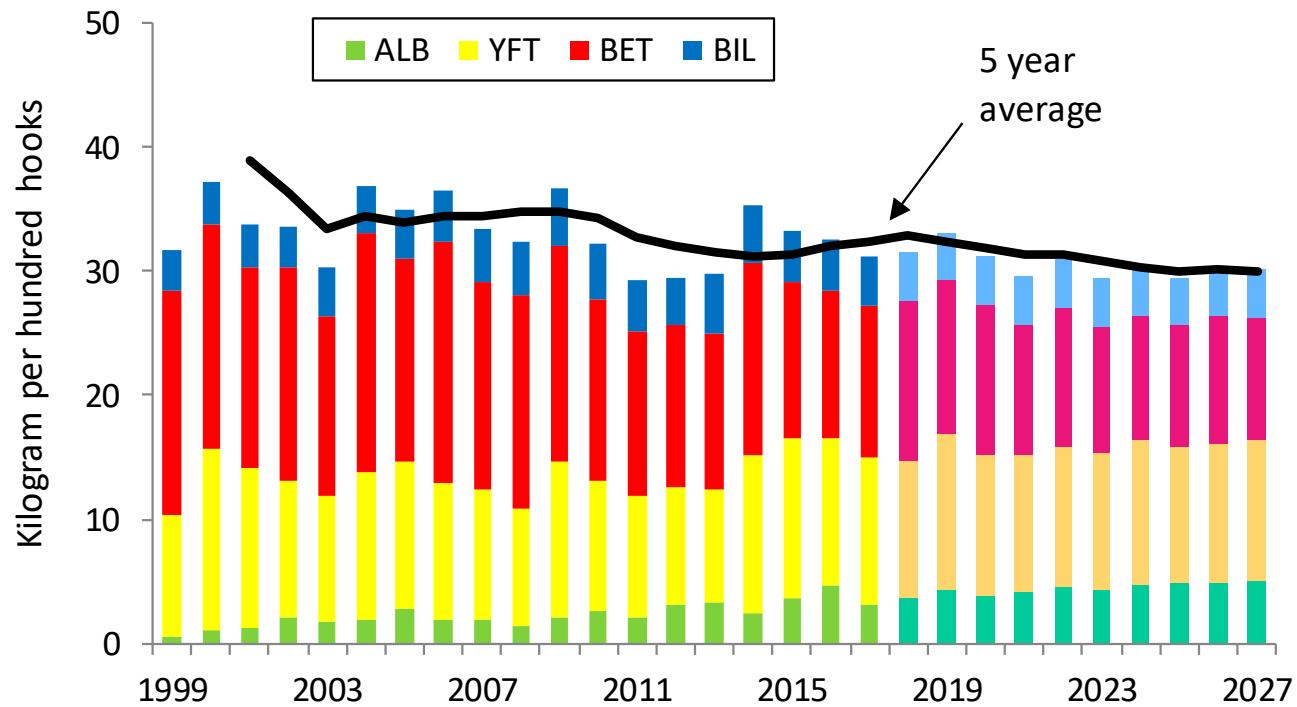
The tropical longline fishery





FFA

Catch rates in the TLL fishery

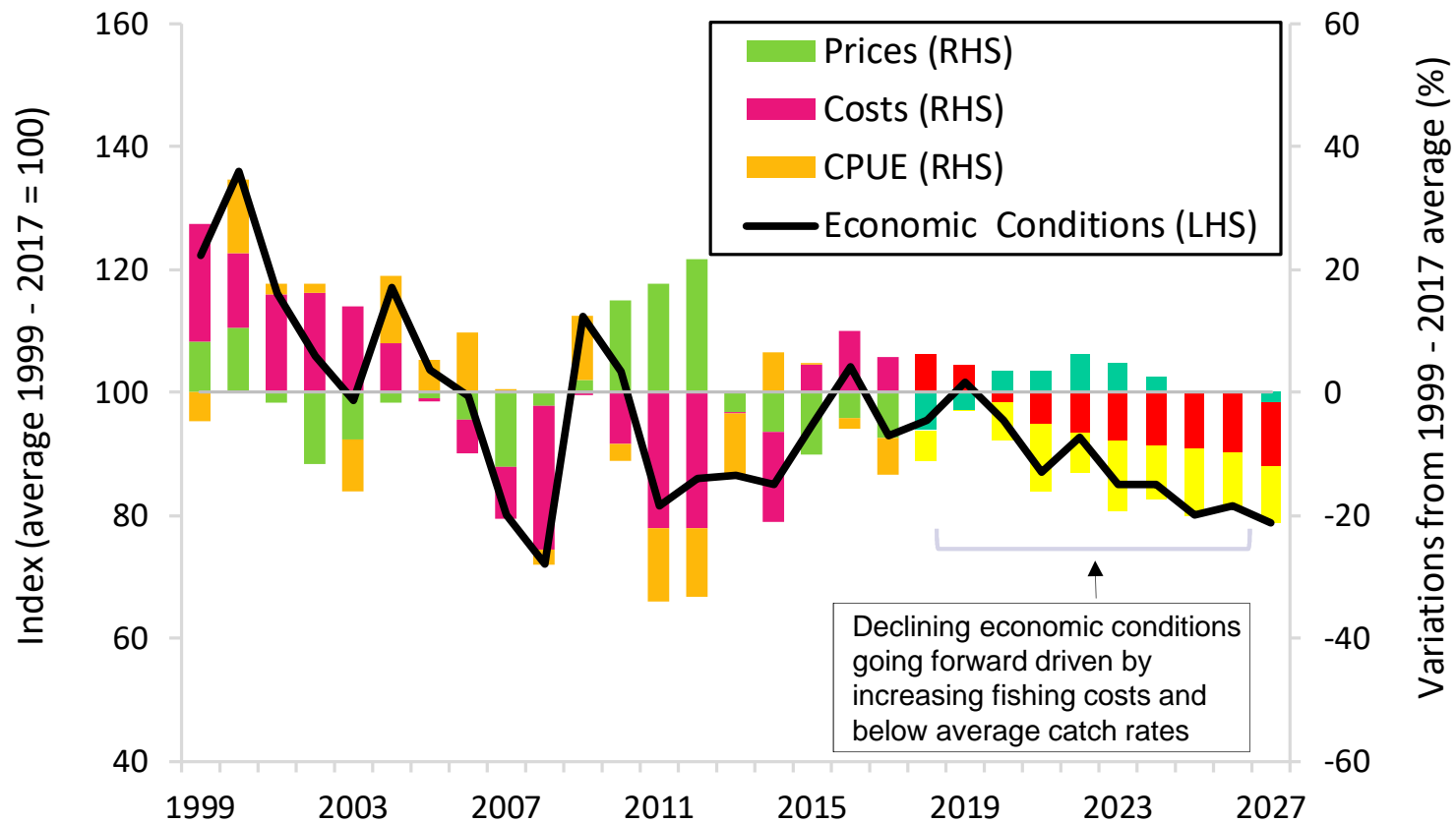


Projections of CPUE in the tropical longline fishery by species



FFA

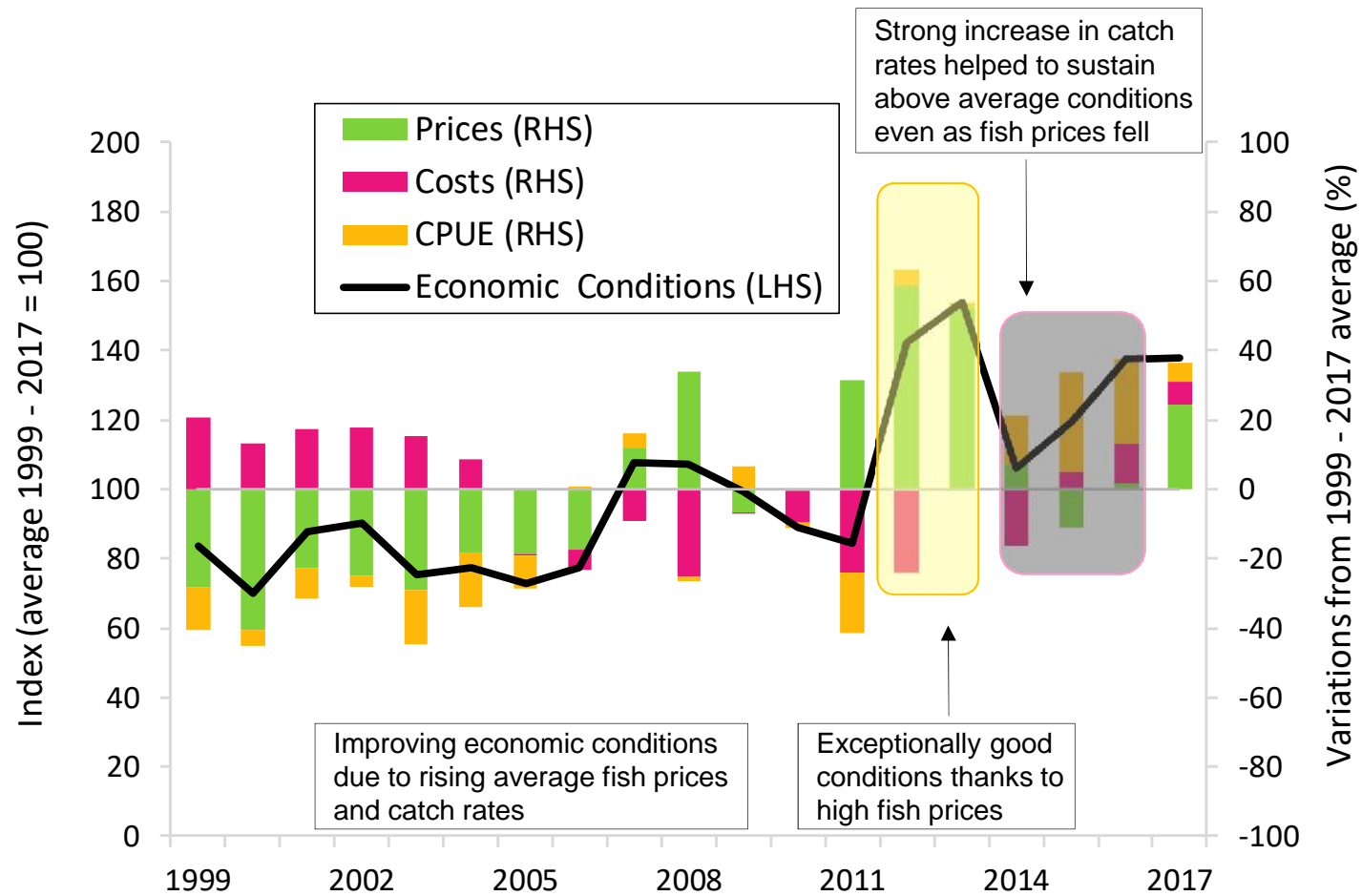
The tropical longline fishery





FFA

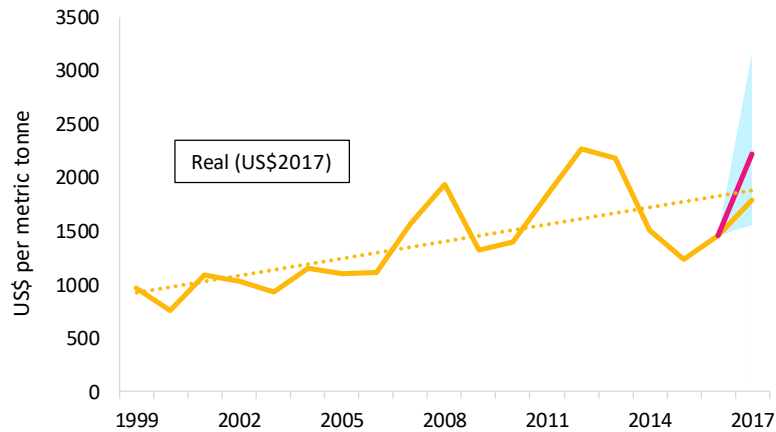
The purse seine fishery



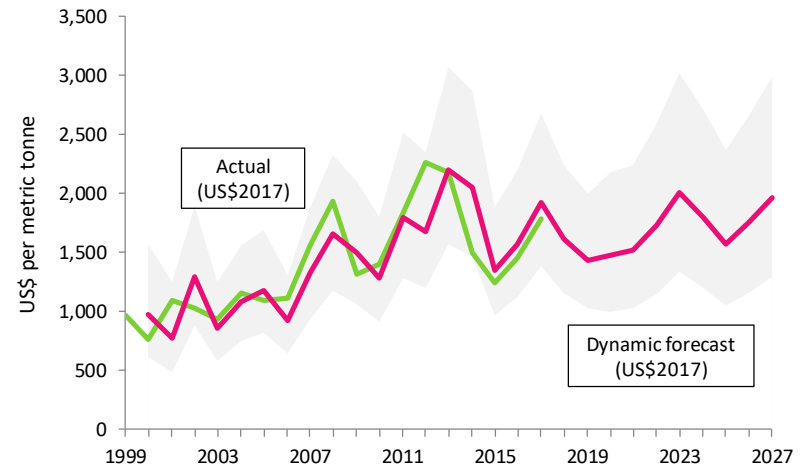


FFA

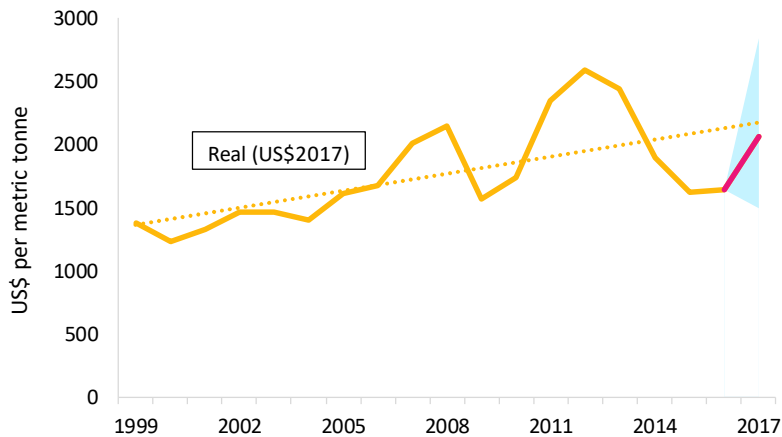
Purse seine prices and forecasts



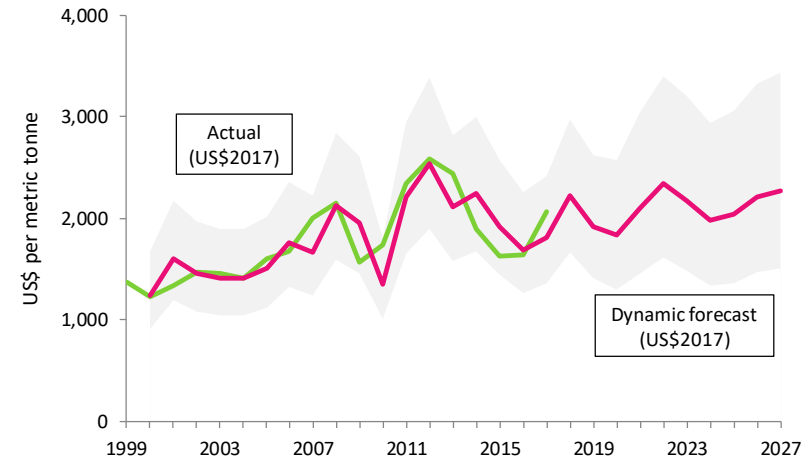
USD real and forecasted prices for imports of skipjack into Thailand



Projections of USD real prices for imports of skipjack into Thailand



USD real and forecasted prices for imports of yellowfin into Thailand



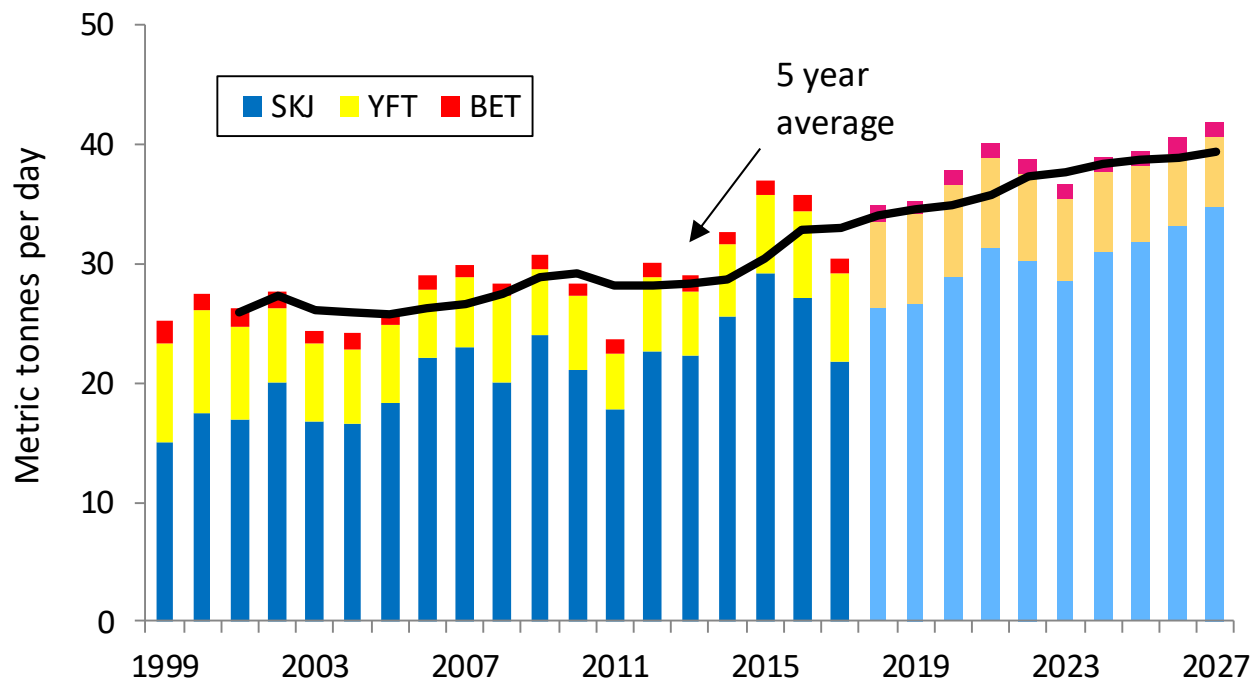
Projections of USD real prices for imports of yellowfin into Thailand





FFA

Catch rates in the PS fishery

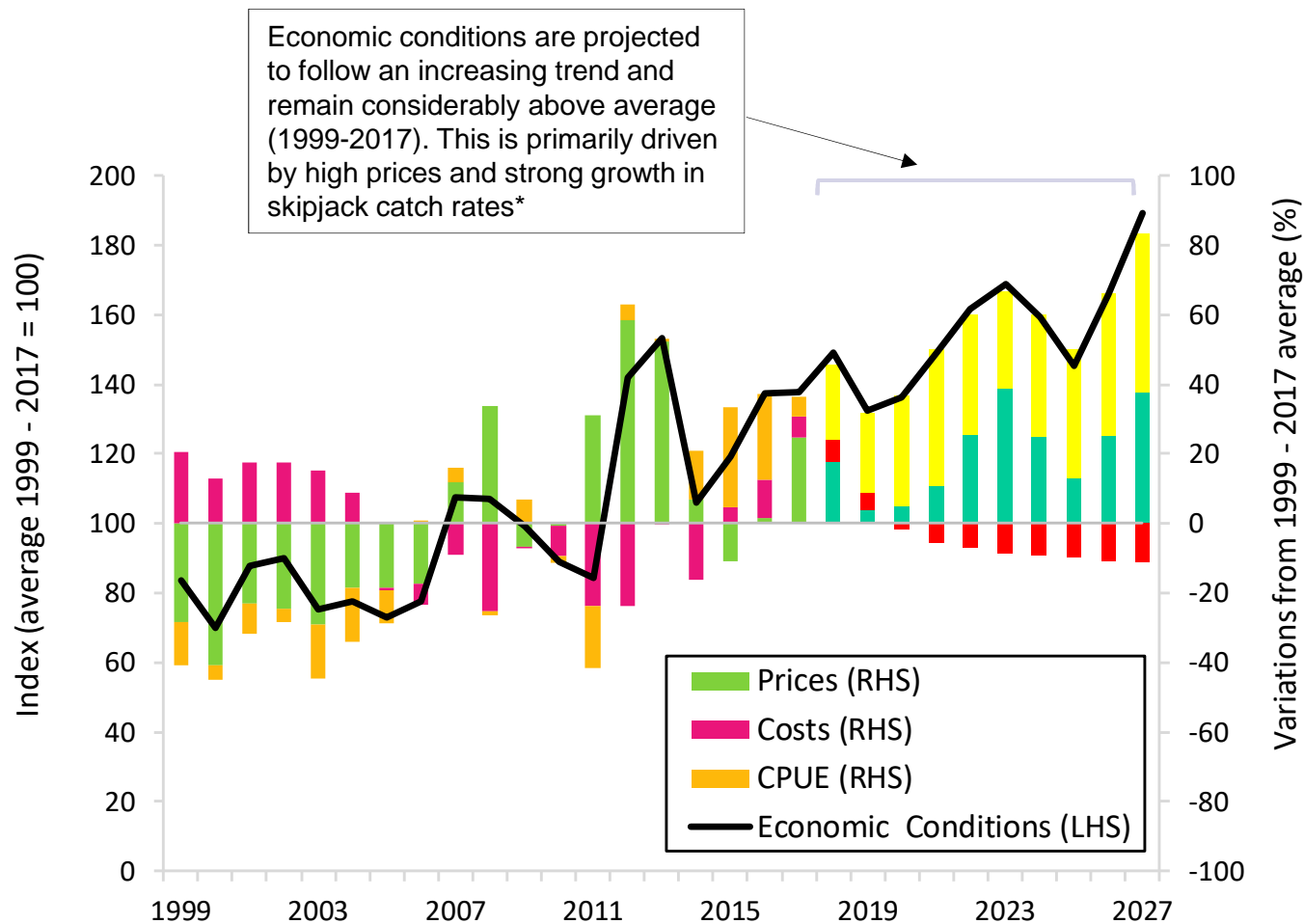


Projections of CPUE in the purse seine fishery by species



FFA

The purse seine fishery





FFA

Discussion

- Economic conditions in the longline fisheries are heavily impacted by catch rates and fishing cost
- Persistently low catch rates has and will continue to hamper profitability
- Fish price and *historical* improvements in catch rates for skipjack are key contributors to above average economic conditions in the purse seine fishery



FFA

Discussion

- The economic conditions index provides a relative measure of operating environment compared to the average of reference period. It does not reflect fleet specific conditions or absolute levels of profitability
- The information provided should be used in conjunction with scientific information on the biological health of fish stocks in formulating management advice