



**THIRD E-REPORTING AND E-MONITORING WORKING GROUP MEETING
(ERandEMWG3)
Busan, Republic of Korea
6 - 7 August 2018**

**DRAFT STANDARDS FOR THE E-REPORTING OF TRANSHIPMENT
DECLARATIONS AND TRANSHIPMENT NOTICES**

**WCPFC-2018-ERandEMWG3-03
17 July 2018**

Paper prepared by the Secretariat

DRAFT STANDARDS FOR THE E-REPORTING OF TRANSHIPMENT DECLARATIONS AND TRANSHIPMENT NOTICES

Purpose

1. This paper presents a set of draft standards for the E-reporting of transshipment declarations and transshipment notices, taking into consideration the requirements of CMM 2009-06 Annex I and Annex III and comments received from TCC13 and WCPFC14.

Background

2. CMM 2009-06 defines the requirements for CCMs to supply transshipment declarations and transshipment notices to the Executive Director; and documents the information to be included in these. For the past eight years' the Commission has been receiving high seas transshipment information, mostly in the form of scanned documents submitted, on a variety of ad-hoc forms, via email. These scanned documents are then data entered at the Commission. However, many (perhaps most) fishing vessels also collect transshipment information for their own, or their company, purposes. As a consequence, transshipment information is being double or triple data entered.
3. The Summary Report of the ER and EM Working Group second meeting (WCPFC-TCC12-2016-17) was adopted by WCPFC13 (WCPFC13 Summary Report paragraph 583). One of the recommendations from the Working Group meeting in 2016, was for the Secretariat to "develop draft E-reporting standards for transshipment reporting requirements (particularly declarations, notification and observer) required under CMM 2009-06.

Draft standards for the E-reporting of transshipment declarations and transshipment notices

4. Version 1 of the draft standards for the E-reporting of transshipment declarations and transshipment notices were presented at TCC13 (WCPFC-TCC13-2017-15). The development of this draft considered the WCPFC13 adopted E-Reporting SSPs for operational level catch and effort data, and the specific requirements of CMM 2009-06. The comments received during TCC13 were generally supportive. TCC13 noted these standards and requested written submissions before 1 November 2017. The agreed outcome from TCC13 was -

"TCC13 noted the Secretariats paper (TCC13-2017-15) presenting draft E-reporting standards for high seas transshipment declarations and notifications. CCMs with additional comments were encouraged to provide them to the Secretariat by November 1 2017. The Secretariat will revise the version in advance of WCPFC14, as needed."
5. Japan and Chinese Taipei provided written submissions on the draft standards. These submissions were incorporated into version 2 of the draft standards. FFA's submission to WCPFC14 (WCPFC14-2017-DP09) addressing broader issues relating to electronic reporting and electronic monitoring was also considered. This submission did not result in any changes to the draft standards but was noted by the Secretariat.
6. Version 2 of the draft standards was a paper (WCPFC14-2017-21) made available at WCPFC14. Due to other agenda items running over-time, the Commission did not discuss the draft standards in detail; however, the WCPFC14 meeting report states –

"The Commission noted the Secretariat paper WCPFC14-2017-21 that provided a set of draft standards for the E-reporting of high seas transshipment declarations and transshipment notices taking into consideration the requirements of CMM 2009-06 Annex I and Annex III. The Commission agreed that vessels could additionally use the UN/CEFACT's FLUX standard for the e-reporting of high seas transshipment declarations and notices, subject to the information provided complying with the requirements of CMM 2009-06. The Commission endorsed in principle the Secretariats proposed

workplan for 2018 as set out in WCPFC14-2017-21, and noted that FAC11, in addition to supporting the 2018 budget request, had allocated additional funding for the Secretariat to include in its 2018 workplan consideration of the UN/CEFACT's FLUX standard in the implementation of E-reporting of high seas transshipment declarations and transshipment notices."

7. The recommendations presented in WCPFC14-2017-21 included – "Task the ER&EM Working Group, at its next meeting, to review and consider the latest version of the draft standards for the E-reporting of transshipment declarations and transshipment notices".

Changes to the draft standards since the version presented at WCPFC14

8. The Secretariat has begun work on implementing a prototype high-seas transshipment E-reporting system. In the course of this work several issues have been identified which have resulted in changes to the draft standards.
9. Version 3 of the draft standards adds a requirement for the reporting CCM to be identified in the data transmitted. For example – an E-reported transshipment declaration made by a (not-chartered) Japanese vessel would need to include data identifying that this declaration had been reported by Japan. CMM 2009-06 states that CCMs shall report, but does not explicitly state that the reporting CCM shall identify itself. However, unless the CCM identifies itself, then the Commission has no way of knowing whether a CCM has meet its CMM 2009-06 obligations to report. Note that in most cases it would be possible for the Commission to identify the reporting CCM based on the flag of the offloading or receiving vessel, however paragraph 7 of CMM 2009-06 also requires that the chartering CCM is responsible for reporting against the vessel.
10. Version 3 of the draft standards includes a requirement for time zone data to be specified as part of the transshipment date data based on ISO8601 standard. UTC or local times may be used; and, if local time is being used, then data on which time zone is being used must also be supplied. This is to ensure that dates and times are consistently stored within the WCPFC's computer systems. For example – if a vessel proposed transshipping on 9 October 2018, then the E-reported transshipment notification would need to include data describing in which time zone it would be 9 October 2018. Vessels have the option of reporting in either UTC time or local time, but a transshipment that occurred on 9 October UTC time could be occurring on 10 October local time. Without data identifying the time zone that the reporter is using, the Commission has no way of knowing exactly when the transshipment is planned to occur.
11. Version 3 of the draft standards amends appendix 3 (Transshipment Location Codes) of the draft standard to make this compatible with the definitions used in the WCPFC's current transshipment database. This includes adding a code to describe the WCPFC/IATTC overlap area.
12. Version 3 of the draft standards amends appendix 5 (RFMO Area Codes) of the draft standard to make this compatible with the definitions used in the WCPFC's current transshipment database. Again, this includes adding a code to describe the WCPFC/IATTC overlap area.
13. Version 3 of the draft standards amends appendix 4 (Processed State Codes) of the draft standard to make this compatible with the definitions used in the WCPFC's current transshipment database. This includes adding a code for the state "Filletted". Although not specified in CMM 2009-06, "Filletted" is regularly reported on the current manual transshipment declarations and transshipment notices.
14. Version 3 of the draft standards amends section 7 to remove XLXS as an allowed format for the e-reporting of transshipment declarations and transshipment notices and replaces this with FLUX. XLXS is a format for an electronic file. JSON, XML and FLUX are formats for the transmission of data between computer systems. Allowing for XLXS would add significant complexity to the transshipment e-reporting project, for very little gain.

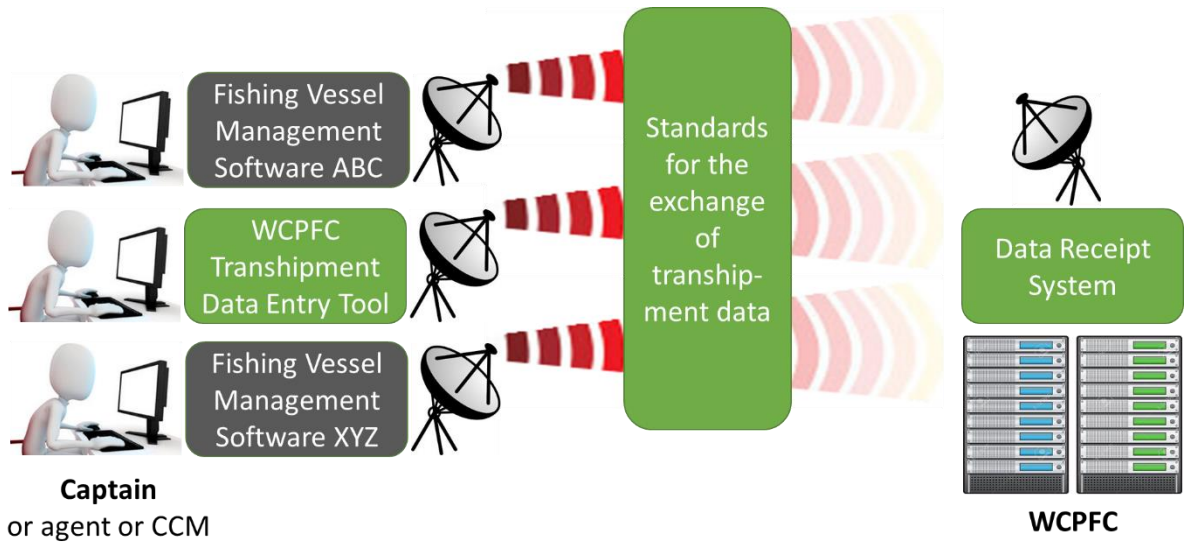
Notes on the draft standards

15. The draft standards describe the format in which data would be transmitted from a computer programme on the offloading/receiving vessel (or agent, or CCM) to a computer located at the WCPFC. The draft standards do not specify the appearance of the forms that would be presented to the vessel's captain. Likewise, the draft standards do not specify how the data will be stored once it reaches the WCPFC.
16. The draft standards do not propose collecting any additional operational data beyond that required by CMM 2009-06, and the draft standards do not propose any increase in the resolution (spatial, temporal or product weights) at which CCMs report transshipment declarations and transshipment notices.
17. The draft standards do propose collecting some additional non-operational data, including the senders contact email address (so that the WCPFC has a contact point to which it can send queries about the declaration /notification) and the reporting CCM.
18. The draft standards do propose that the collection of some operational data, as required by Annex I and Annex III of CMM 2009-06, is waived in the case of transshipment declarations / notifications submitted via e-reporting. Specifically, the draft standards propose waiving:
 - a. the requirement to provide the observers signature, although the observers name would still be required;
 - b. the requirement for a Unique Document Identifier, as in the case of e-reported transshipment declarations / notifications this identifier would be generated by the WCPFC's computer systems;
 - c. the requirement for the offloading vessel to supply data on the quantity of product already on board the receiving vessel, although the receiving vessel would still need to supply this data;
 - d. the requirement for the receiving vessel to supply data on the fishing gear that the offloading vessel used to take the fish, although the offloading vessel would still need to supply this data; and
 - e. the requirement for the receiving vessel to supply data on the quantity of product to be transhipped, although the offloading vessel would still need to supply this data.

Current status of the E-reporting of high seas transshipment declarations and transshipment notices project

19. At its December 2017 meeting the Commission "endorsed in principle the Secretariat's proposed workplan for 2018 as set out in WCPFC14-2017-21". On the basis of this endorsement and the approved budget, the Secretariat has proceeded with developing a high seas transshipment e-reporting system. At the time of writing this system is approximately half-complete. The Secretariat has made allowance for the possible need to re-work parts of the system, based on the ERandEM Working Group's discussions and any additional feedback provided on the draft standards.
20. In February 2018, the Secretariat received an in-kind donation from the New Zealand Ministry of Primary Industries to partially support activities related to the delivery of the high seas transshipment e-reporting system.
21. The high seas transshipment e-reporting system includes three major components:
 - a. The standards provided as Attachment 1 to this paper;
 - b. A Data Receipt System that receives data which complies with these standards; and
 - c. A Transshipment Data Entry Tool that transmits data which complies with these standards.

22. Because the system is standards based, the Data Receipt System will accept data from any source that complies with the standards. The WCPFC Transshipment Data Entry Tool will provide an option that vessel captains (or agents, or CCMs) may choose to use to report high seas transshipment declarations and transshipment notices electronically. However, any other computer system that can produce data which complies with the standards will also be able to report electronically. An example of the data that would result from the draft standards is provided in Attachment 2.



23. Emailed reports of high seas transshipments will continue to be acceptable forms of reporting from CCMs to WCPFC, until the Commission decides to make E-reporting mandatory.
24. It is anticipated that phase 1 of the high seas transshipment e-reporting system, which will accept data in JSON format, will become operational in early 2019. Phase 2, which will accept data in XML and FLUX formats, would be scheduled subject to availability of budgetary funds, and at earliest would become operational in late 2019.
25. The Secretariat plans during the second half of 2018 to undertake operational testing and would also be available to liaise with interested CCMs on request.

Recommendation

26. The Electronic Reporting and Electronic Monitoring Working Group is invited to:
- a Note update provided by the Secretariat on the current status of the E-reporting of high seas transshipment declarations and transshipment notices project Phase 1;
 - b Note that the Phase 2 implementation has budgetary implications;
 - c Consider version 3 of the standards for the E-reporting of transshipment declarations and transshipment notices (Attachment 1);
 - d Recommend that the Commission adopt the E-reporting of transshipment declarations and transshipment notices.

Western and Central Pacific Fisheries Commission (WCPFC)

DRAFT STANDARDS FOR THE E-REPORTING OF TRANSHIPMENT DECLARATIONS AND TRANSHIPMENT NOTICES

13 July 2018

<i>CURRENT VERSION:</i>	<i>3.0</i>
<i>DATE:</i>	<i>13 July 2018</i>
<i>STATUS:</i>	<i>Draft – yet to be approved</i>

<i>Version Number</i>	<i>Date</i>	<i>Brief Description of Changes</i>
3.0	July 2018 – presented to ERandEMWG3	Introduction shortened to remove repetition of the information also contained in the covering note.
		Amended section 3.b, 4.b, 5.b & 6.b; so that the reporting CCM would be transmitted in the format of a CCM WCPFC alpha-2 two-letter Country Code.
		Amended section 3.b, 4.b, 5.b & 6.b; so that the time zone would be transmitted for transshipment dates.
		Amended section 7 to replace XLXS with FLUX.
		Amended Appendix 2: to include the reporting of time zones as hours offset from UTC time.
		Amended Appendix 3: removed “within convention area but not within an EEZ and not on the high seas”, added “WCPFC/IATTC Overlap Area”, removed all non-WCPFC RFMO areas, removed “other not listed above”, added “outside the Convention Area”.
		Amended Appendix 4: added “Filleted”.
		Amended Appendix 5: removed “Other, not listed above”, added “Outside tuna RFMOs”, added “WCPFC/IATTC Overlap Area”.
2.0	November 2017 – presented to WCPFC13	Amended section 3.b, 4.b & 5.b; so that the quantity of product transhipped would be transmitted as metric tonnes.
		Amended section 1 to remove the reference to the quantity of product to be transhipped being transmitted as kg.
		Amended the following sections to remove the requirement to transmit the vessel’s VID and substitute a requirement to transmit the vessel’s WIN: 1, 3a, 3b, 3c, 3d, 4a, 4b, 4c, 4d, 5a, 5b, 5c, 5d, 6a, 6b, 6c & 6d.
		Added the following sentence to section 1 – “Before the e-reporting of Transshipment Declarations and Transshipment Notices become mandatory, there should be a further opportunity for CCMs to provide feedback on these standards and for improvements to be made.”
		Added the following sentence to section 1 – “These are standards for the transmission of data from vessels to the WCPFC Secretariat. They are not intended to define the format in which the Secretariat will store this data.”
		Deleted para 4.d.5
1.0	September 2017 – presented to TCC13	The original draft standards presented to TCC13.

CONTENTS

1. INTRODUCTION	9
2. STANDARDS FOR THE E-REPORTING OF TRANSHIPMENT INFORMATION	9
3. OFFLOADING VESSEL TRANSHIPMENT DECLARATIONS	10
3.a Standards for the structure of new or amended e-reports	10
3.b Standards for the records and fields to be provided	11
3.c Standards for cancelling a previously submitted e-report	14
3.d Notes.....	15
4. RECEIVING VESSEL TRANSHIPMENT DECLARATIONS.....	16
4.a Standards for the structure of new or amended e-reports	16
4.b Standards for the records and fields to be provided	17
4.c Standards for cancelling a previously submitted e-report	21
4.d Notes.....	22
5. OFFLOADING VESSEL TRANSHIPMENT NOTICES.....	23
5.a Standards for the structure of new or amended e-reports	23
5.b Standards for the records and fields to be provided	24
5.c Standards for cancelling a previous e-report	27
6. RECEIVING VESSEL TRANSHIPMENT NOTICES.....	28
6.a Standards for the structure of new or amended e-reports	28
6.b Standards for the records and fields to be provided	28
6.c Standards for cancelling a previous e-report	31
6.d Notes.....	31
7. STANDARDS FOR THE TRANSMISSION OF TRANSHIPMENT E-REPORTS.....	32
APPENDICES	33
APPENDIX 1 – TRANSHIPMENT FISHING GEAR CODES	33
APPENDIX 2 – DATE/TIME FORMAT	34
APPENDIX 3 – TRANSHIPMENT LOCATION CODES	35
APPENDIX 4 – TRANSHIPMENT PROCESSED STATE CODES	36
APPENDIX 5 – TRANSHIPMENT RFMO AREA CODES	37

1. INTRODUCTION

This document sets out the standards for the provision of Transshipment Declarations and Transshipment Notices to the WCPFC through the mechanism of electronic reporting (e-reporting). CMM2009-06 defines the requirements for CCMs to supply Transshipment Declarations and Transshipment Notices to the Executive Director; and documents the information to be included in these.

E-reporting has the potential to:

- Improve the quality of information received, because e-reporting makes it possible to do data quality checks at the source of the data
- Improve the timeliness of information availability, because there is no delay waiting for data entry
- Reduce costs for the Commission, by reducing the resources that the Commission must commit to data entry.

Standards are a critical element of any E-reporting infrastructure. For E-reporting to function efficiently, the data sent by the transmitting computer must be in the exact format that the receiving computer is expecting. Where this does not occur, human intervention will be required to re-format the data before it can be loaded.

Note that:

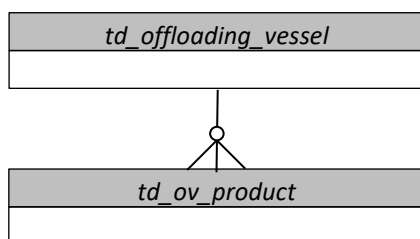
- a) This document includes standards for (1) initially submitting a transshipment declaration or notice and (2) subsequently amending that declaration or notice and (3) cancelling a previous declaration or notice.
- b) Generally, the fields of information specified in these standards are the same as those documented in Annex I and Annex III of CMM2009-06. However, some additional information is required to enable the efficient operation of e-reporting. These instances are clearly identified, and the rationale behind each is documented in the standards that follow. In most cases this additional information could be generated automatically by the sender's computer. These standards do not request any additional information of an operational nature.
- c) One of the additional items of information requested is a contact email address for the submitter. Upon the receipt of a transshipment declaration or notice, the WCPFC would send a confirmation email to the contact email address provided. The reporting CCM is to be declared by the submitter.
- d) Under these standards the collection of some operational data, as required by Annex I and Annex III of CMM2009-06, is waived in the case of information submitted via e-reporting. This is specifically the case where E-reporting offers the opportunity to collect equivalent information without double data entry. These proposals are clearly documented in the sections 3.d, 4.d and 6.d.

2. STANDARDS FOR THE E-REPORTING OF TRANSHIPMENT INFORMATION

- a) Where a vessel, agent or CCM elects to use e-reporting to comply with paragraph 10 of CMM2009-06; the declaration for the offloading vessel must comply with the standards contained in sections 3.a, 3.b, 3.c and 7 of this document.
- b) Where a vessel, agent or CCM elects to use e-reporting to comply with paragraph 10 of CMM2009-06; the declaration for the receiving vessel must comply with the standards contained in sections 4.a, 4.b, 4.c and 7 of this document.
- c) Where a vessel, agent or CCM elects to use e-reporting to comply with paragraph 35 of CMM2009-06; the notice for the offloading vessel must comply with the standards contained in sections 5.a, 5.b, 5.c and 7 of this document.
- d) Where a vessel, agent or CCM elects to use e-reporting to comply with paragraph 35 of CMM2009-06; the notice for the receiving vessel must comply with the standards contained in sections 6.a, 6.b, 6.c and 7 of this document.

3. OFFLOADING VESSEL TRANSHIPMENT DECLARATIONS

3.a Standards for the structure of new or amended e-reports



For each Offloading Vessel Transshipment Declaration, there must be:

- one *td_offloading_vessel* record
- one *td_ov_product* record for each combination of Species / Processed State / Fresh or Frozen / Location of Catch product that was transhipped. For example, the information shown below would be represented by five *td_ov_product* records.

Species	Processed State	Fresh or Frozen	Location of Catch	Quantity
ALB	Gutted & Headed	Fresh	Cook Islands EEZ	1.250t
ALB	Gilled, Gutted & Tailed	Fresh	Cook Islands EEZ	0.525t
ALB	Gilled, Gutted & Tailed	Frozen	Cook Islands EEZ	4.829t
ALB	Gilled, Gutted & Tailed	Frozen	WCPFC High Seas	1.175t
BET	Gilled, Gutted & Tailed	Frozen	WCPFC High Seas	3.678t

Any Offloading Vessel Transshipment Declaration must be able to be uniquely identified by concatenating:

- the vessel's WCPFC WIN number; and
- the date and time that the declaration was submitted.

The *td_ov_product* records for a single transshipment, must be able to be logically linked to the *td_offloading_vessel* record for the same transshipment, using the concatenated vessel's WIN number and declaration datetime.

3.b Standards for the records and fields to be provided

RECORD NAME: <i>td_offloading_vessel</i>			
All of the fields listed below are required in each record. No field may contain missing or null values.			
Information Required	Field Name	Field Format	Notes
The Offloading Vessel's WCPFC Identification Number (WIN)	<i>off_win</i>	VARCHAR(16) Example: <i>ABC1234</i>	Reference: CMM2009-06, annex 1, para 2. Validation: Must be a valid WIN, on the date of transshipment, in the WCPFC Record of Fishing Vessels.
The Offloading Vessel's Name	<i>off_vessel</i>	VARCHAR(64) Example: <i>Lucky Fisher III</i>	Reference: CMM2009-06, annex 1, para 2. Validation: Must be the vessel name which, in the WCPFC Record of Fishing Vessels, corresponds to the <i>off_win</i> provided.
The Receiving Vessel's WCPFC Identification Number (WIN)	<i>rec_win</i>	VARCHAR(16) Example: <i>DEF5678</i>	Reference: CMM2009-06, annex 1, para 3. Validation: Must be a valid WIN, on the date of transshipment, in the WCPFC Record of Fishing Vessels.
The Receiving Vessel's name	<i>rec_vessel</i>	VARCHAR(64) Example: <i>Super Hauler 2</i>	Reference: CMM2009-06, annex 1, para 3. Validation: Must be the vessel name which, in the WCPFC Record of Fishing Vessels, corresponds to the <i>rec_win</i> provided.
The fishing gear used to take the fish	<i>fishing_gear</i>	VARCHAR(16), Uppercase If more than one type of gear was used, then separate the list using dashes. Example: <i>LLS-LLD</i>	Reference: CMM2009-06, annex 1, para 4. Validation: Must be a valid fishing gear code as found in Appendix 1, or list of fishing gear codes separated by dashes.
The date on which the transshipment started	<i>trans_date</i>	VARCHAR(22) ISO8601, – UTC date or local datetime. See Appendix 2. Example: <i>2016-11-25Z</i> <i>2016-11-25T00:00+0700</i>	Reference: CMM2009-06, annex 1, para 9. Validation: Must be a date in the recent past. If a UTC date is used then this must include the "Z" suffix. If a local datetime is used then this must include the hours offset from UTC time as the suffix.
The location at which the transshipment started	<i>trans_loc</i>	VARCHAR(13), Uppercase Example: <i>WCPFC-HS</i>	Reference: CMM2009-06, annex 1, para 9. Validation: Must be a valid location code as found in Appendix 3.

The latitude at which the transshipment started	<i>trans_latitude</i>	CHAR(5) ISO6709, to the nearest 0.1 degree ±DD.D Example for Pohnpei Airport: +07.0	Reference: CMM2009-06, annex 1, para 9. Validation: Must be a valid latitude.
The longitude at which the transshipment started	<i>trans_longitude</i>	CHAR(6) ISO6709, to the nearest 0.1 degree ±DDD.D Example for Pohnpei Airport: +158.2	Reference: CMM2009-06, annex 1, para 9. Validation: (1) Must be a valid longitude and (2) Should, when considered along with the <i>trans_latitude</i> , represent a location that is at sea and within the <i>trans_loc</i> .
The name of the WCPFC observer	<i>obs_name</i>	VARCHAR(64)	Reference: CMM2009-06, annex 1, para 10. Validation: Must not be blank. Use “No Observer” where no observer was present.
Whether this is a new transshipment declaration, or an amendment to a previous transshipment declaration	<i>trans_id</i>	CHAR(16) Example: <i>New-Transshipment</i>	NEW - Rationale: Needed to allow already submitted transshipment declarations to be amended. Validation: In the case of new transshipment declarations, must be “New-Transshipment”. In the case of amendments to a previous transshipment declaration, must be the Transshipment ID that the WCPFC sent to the contact email address when confirming receipt of the declaration.
The date and time that the declaration was submitted	<i>submit_time</i>	VARCHAR(22) ISO 8601 – Date and time without seconds. See Appendix 2. Example:2016-11-25T14:46+11:00	NEW - Rationale: Needed (along with the <i>off_win</i> field) to allow <i>td_offloading_vessel</i> records and <i>td_ov_product</i> records to be correctly linked. Validation: Must be a recent earlier date/time, including the hours offset from UTC time. Note: Could be automatically generated by the submitters computer system at the moment that the declaration was sent.
The number of transhipped product records that are being submitted	<i>product_count</i>	INTEGER Example: 25 Must be 0 if no product was transhipped.	NEW - Rationale: Needed to ensure that product transhipped records have not been lost or duplicated in transmission. Note: Could be automatically generated by the submitters computer system at the moment that the declaration was sent.
The CCM responsible for reporting this transshipment	<i>reporting_ccm</i>	CHAR(2) Example: VU	NEW – A two letter code representing the CCM responsible for reporting the transshipment. Validation: Must be a valid CCM WCPFC alpha-2 two-letter Country Code.

A contact email address	<i>contact_email</i>	VARCHAR(50) Example: <i>a.fisher@gmail.com</i>	NEW - Rationale: An email address that WCPFC should use to (1) confirm receipt of this declaration and (2) contact if there are any problems with the quality / completeness of this declaration. Validation: Must be a valid email address.
-------------------------	----------------------	--	--

RECORD NAME: td_ov_product			
All of the fields listed below are required in each record. No field may contain missing or null values.			
Information Required	Field Name	Field Format	Notes
The Offloading Vessel's WCPFC Identification Number (WIN)	<i>off_win</i>	VARCHAR(16) Example: <i>ABC1234</i>	DUPLICATE - Rationale: Needed (along with the <i>submit_time</i> field) to allow <i>td_offloading_vessel</i> records and <i>td_ov_product</i> records to be correctly linked. Validation: Must have a matching entry in the <i>td_offloading_vessel</i> record.
The date and time that the declaration was submitted	<i>submit_time</i>	VARCHAR(22) ISO 8601 – Date and time without seconds. See Appendix 2. Example: <i>2016-11-25T14:46+11:00</i>	NEW & DUPLICATE - Rationale: Needed (along with the <i>off_win</i> field) to allow <i>td_offloading_vessel</i> records and <i>td_ov_product</i> records to be correctly linked. Validation: Must have a matching entry in the <i>td_offloading_vessel</i> record.
The species that was transhipped	<i>species</i>	CHAR(3), Uppercase The three-letter FAO species code for the species. Example: <i>SKJ</i>	Reference: CMM2009-06, annex 1, para 5. Validation: Must be a valid three-letter FAO species code - www.fao.org/fishery/collection/asfis/en
The processed state of the transhipped fish	<i>processed_state</i>	CHAR(2), Uppercase Example: <i>WH</i>	Reference: CMM2009-06, annex 1, para 5. Validation: Must be a valid processed state code as found in Appendix 4.
Whether the transhipped fish was fresh or frozen	<i>fresh_frozen</i>	VARCHAR(6), containing the string "Fresh" or "Frozen"	Reference: CMM2009-06, annex 1, para 6.

The geographic location of the catch	<i>catch_loc</i>	VARCHAR(13), Uppercase Example: <i>WCPFC-HS</i>	Reference: CMM2009-06, annex 1, para 8. Validation: Must be a valid location code as found in Appendix 3.
The quantity of the product that was transhipped	<i>quantity_product</i>	FLOAT Example: <i>3.92</i>	Reference: CMM2009-06, annex 1, para 5. The weight of product transhipped, measured in metric tonnes.

3.c Standards for cancelling a previously submitted e-report

<i>td_ov_cancel</i>

It will be possible to use e-reporting to cancel a previously submitted Offloading Vessel Transhipment Declaration. For each Offloading Vessel Transhipment Declaration cancellation, there must be one *td_ov_cancel* record.

RECORD NAME: <i>td_ov_cancel</i>			
All of the fields listed below are required in each record. No field may contain missing or null values.			
Information Required	Field Name	Field Format	Notes
The Offloading Vessel's WCPFC Identification Number (WIN)	<i>off_win</i>	VARCHAR(16) Example: <i>ABC1234</i>	Reference: CMM2009-06, annex 1, para 2. Validation: Must be a valid WIN, on the date of transhipment, in the WCPFC Record of Fishing Vessels.
The WCPFC Transhipment ID for the Offloading Vessel Transhipment Declaration that is being cancelled	<i>trans_id</i>	CHAR(16) Example: <i>HPOU6685WDXZ2309</i>	Rationale: Needed to allow already submitted transhipment declarations to be amended. Validation: Must be a valid WCPFC Transhipment ID, for a transhipment declaration that had previously been made by the offloading vessel. Note: This ID will have been sent by the WCPFC to the contact email address when the Transhipment Declaration was first submitted.
A contact email address	<i>contact_email</i>	VARCHAR(50) Example: <i>a.fisher@gmail.com</i>	Rationale: An email address that WCPFC should use to (1) confirm receipt of this cancellation and (2) contact if there are any problems with the quality / completeness of this cancellation. Validation: Must be a valid email address.

3.d Notes

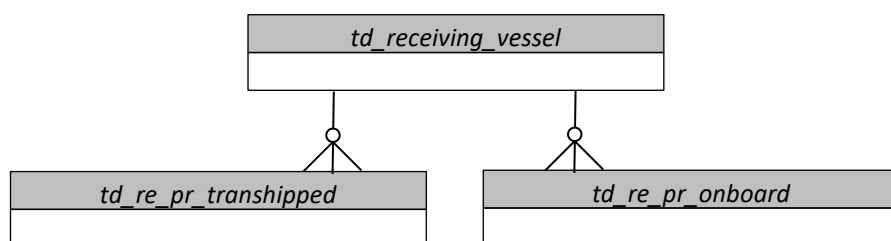
For the e-reporting of Transshipment Declarations by Offloading Vessels:

- the requirement for the offloading vessel to supply a “Unique Document Identifier” (CMM2009-06, annex 1, para 1) would be waived.
- the requirement for the offloading vessel to supply the signature of a WCPFC observer (CMM2009-06, annex 1, para 10) would be waived.
- the requirement for the offloading vessel to supply the quantity of product already on board the receiving vessel (CMM2009-06, annex 1, para 11) would be waived. The receiving vessel would still be required to supply this information.

DRAFT

4. RECEIVING VESSEL TRANSHIPMENT DECLARATIONS

4.a Standards for the structure of new or amended e-reports



For each Receiving Vessel Transshipment Declaration, there must be:

- one *td_receiving_vessel* record
- one *td_re_pr_transhipped* record for each combination of Species / Processed State / Fresh or Frozen product that was transhipped. For example, the information shown below would be represented by four *td_re_pr_transhipped* records.

Species	Processed State	Fresh or Frozen	Quantity
ALB	Gutted & Headed	Fresh	1.25t
ALB	Gilled, Gutted & Tailed	Fresh	0.525t
ALB	Gilled, Gutted & Tailed	Frozen	6.004t
BET	Gilled, Gutted & Tailed	Frozen	3.678t

- one *td_re_pr_onboard* record for each combination of Species / RFMO Of Origin product that was on-board the receiving vessel before the transshipment started. For example, the information shown below would be represented by three *td_re_pr_onboard* records.

Species	RFMO	Quantity
ALB	WCPFC	11.201t
ALB	IOTC	3.02t
BET	IOTC	3.678t

Note on interpreting the CMM - CMM2009-06, annex 1, para 11 requires receiving vessels to report “the quantity of product already on board the receiving vessel”, but is silent on whether the processed state of this product is required. This is open to two interpretations (1) the earlier definition of “product” contained in CMM2009-06, annex 1, para 5 applies or (2) no information on product state is required. In drafting this standard the second interpretation has been used, but this should be clarified before the standard is finalised.

Any Receiving Vessel Transshipment Declaration must be able to be uniquely identified by concatenating:

- the vessel’s WCPFC WIN number; and
- the date and time that the declaration was submitted.

The *td_re_pr_transhipped* and *td_re_pr_onboard* records for a single transshipment, must be able to be logically linked to the *td_receiving_vessel* record for the same transshipment, using the concatenated receiving vessel’s WIN number and declaration datetime.

4.b Standards for the records and fields to be provided

RECORD NAME: <i>td_receiving_vessel</i>			
All of the fields listed below are required in each record. No field may contain missing or null values.			
Information Required	Field Name	Field Format	Notes
The Offloading Vessel's WCPFC Identification Number (WIN)	<i>off_win</i>	VARCHAR(16) Example: <i>ABC1234</i>	Reference: CMM2009-06, annex 1, para 2. Validation: Must be a valid WIN, on the date of transshipment, in the WCPFC Record of Fishing Vessels.
The Offloading Vessel's Name	<i>off_vessel</i>	VARCHAR(64) Example: <i>Lucky Fisher III</i>	Reference: CMM2009-06, annex 1, para 2. Validation: Must be the vessel name which, in the WCPFC Record of Fishing Vessels, corresponds to the <i>off_win</i> provided.
The Receiving Vessel's WCPFC Identification Number (WIN)	<i>rec_win</i>	VARCHAR(16) Example: <i>DEF5678</i>	Reference: CMM2009-06, annex 1, para 3. Validation: Must be a valid WIN, on the date of transshipment, in the WCPFC Record of Fishing Vessels.
The Receiving Vessel's name	<i>rec_vessel</i>	VARCHAR(64) Example: <i>Super Hauler 2</i>	Reference: CMM2009-06, annex 1, para 3. Validation: Must be the vessel name which, in the WCPFC Record of Fishing Vessels, corresponds to the <i>rec_win</i> provided.
The date on which the transshipment started	<i>trans_date</i>	VARCHAR(22) ISO8601, – UTC date or local datetime. See Appendix 2. Example: <i>2016-11-25Z</i> <i>2016-11-25T00:00+0700</i>	Reference: CMM2009-06, annex 1, para 9. Validation: Must be a date in the recent past. If a UTC date is used then this must include the "Z" suffix. If a local datetime is used then this must include the hours offset from UTC time as the suffix.
The location at which the transshipment started	<i>trans_loc</i>	VARCHAR(13), Uppercase Example: <i>WCPFC-HS</i>	Reference: CMM2009-06, annex 1, para 9. Validation: Must be a valid location code as found in Appendix 3.
The latitude at which the transshipment started	<i>trans_latitude</i>	CHAR(5) ISO6709, to the nearest 0.1 degree ±DD.D Example for Pohnpei Airport: <i>+07.0</i>	Reference: CMM2009-06, annex 1, para 9. Validation: Must be a valid latitude.

The longitude at which the transshipment started	<i>trans_longitude</i>	CHAR(6) ISO6709, to the nearest 0.1 degree ±DDD.D Example for Pohnpei Airport: +158.2	Reference: CMM2009-06, annex 1, para 9. Validation: (1) Must be a valid longitude and (2) Should, when considered along with the <i>trans_latitude</i> , represent a location that is at sea and within the <i>trans_loc</i> .
The name of the WCPFC observer	<i>obs_name</i>	VARCHAR(64)	Reference: CMM2009-06, annex 1, para 10. Validation: Must not be blank. Use “No Observer” where no observer was present.
Whether this is a new transshipment declaration, or an amendment to a previous transshipment declaration	<i>trans_id</i>	CHAR(16) Example: <i>New-Transshipment</i>	NEW - Rationale: Needed to allow already submitted transshipment declarations to be amended. Validation: In the case of new transshipment declarations, must be “New-Transshipment”. In the case of amendments to a previous transshipment declaration, must be the Transshipment ID that the WCPFC sent to the contact email address when confirming receipt of the declaration.
The date and time that the declaration was submitted	<i>submit_time</i>	VARCHAR(22) ISO 8601 – Date and time without seconds. See Appendix 2. Example: <i>2016-11-25T14:46+11:00</i>	NEW - Rationale: Needed (along with the <i>off_winfield</i>) to allow <i>td_receiving_vessel</i> , <i>td_re_pr_transhipped</i> and <i>td_re_pr_onboard</i> records to be correctly linked. Validation: Must be a recent earlier date/time, including the hours offset from UTC time. Note: Could be automatically generated by the submitters computer system at the moment that the declaration was sent.
The number of transhipped product records that are being submitted	<i>product_count</i>	INTEGER Example: 25 Must be 0 if no product was transhipped.	NEW - Rationale: Needed to ensure that product transhipped records have not been lost or duplicated in transmission. Note: Could be automatically generated by the submitters computer system at the moment that the declaration was sent.
The number of product already on-board records that are being submitted	<i>onboard_count</i>	INTEGER Example: 49 Must be 0 if no product was on-board before the transshipment started.	NEW - Rationale: Needed to ensure that product already on-board records have not been lost or duplicated in transmission. Note: Could be automatically generated by the submitters computer system at the moment that the declaration was sent.
The CCM responsible for reporting this transshipment	<i>reporting_ccm</i>	CHAR(2) Example: VU	NEW – A two letter code representing the CCM responsible for reporting the transshipment. Validation: Must be a valid CCM WCPFC alpha-2 two-letter Country Code.

A contact email address	<i>contact_email</i>	VARCHAR(50) Example: <i>a.carrier@gmail.com</i>	NEW - Rationale: An email address that WCPFC should use to (1) confirm receipt of this declaration and (2) contact if there are any problems with the quality / completeness of this declaration. Validation: Must be a valid email address.
-------------------------	----------------------	---	--

RECORD NAME: *td_re_pr_transhipped*

All of the fields listed below are required in each record. No field may be missing or null.

Information Required	Field Name	Field Format	Notes
The Receiving Vessel's WCPFC Identification Number (WIN)	<i>rec_win</i>	VARCHAR(16) Example: <i>DEF5678</i>	Reference: CMM2009-06, annex 1, para 3. Validation: Must be a valid WIN, on the date of transhipment, in the WCPFC Record of Fishing Vessels.
The date and time that the declaration was submitted	<i>submit_time</i>	VARCHAR(22) ISO 8601 – Date and time without seconds. See Appendix 2. Example: <i>2016-11-25T14:46+11:00</i>	NEW & DUPLICATE - Rationale: Needed (along with the <i>rec_win</i> field) to allow <i>td_receiving_vessel</i> records and <i>td_re_pr_transhipped</i> records to be correctly linked. Validation: Must have a matching entry in the <i>td_receiving_vessel</i> record.
The species that was transhipped	<i>species</i>	CHAR(3), Uppercase The three-letter FAO species code for the species. Example: <i>SKJ</i>	Reference: CMM2009-06, annex 1, para 5. Validation: Must be a valid three-letter FAO species code - www.fao.org/fishery/collection/asfis/en
The processed state of the transhipped fish	<i>processed_state</i>	CHAR(2), Uppercase Example: <i>WH</i>	Reference: CMM2009-06, annex 1, para 5. Validation: Must be a valid processed state code as found in Appendix 4.
Whether the transhipped fish was fresh or frozen	<i>fresh_frozen</i>	VARCHAR(6), containing the string "Fresh" or "Frozen"	Reference: CMM2009-06, annex 1, para 6.
The quantity of the product that was transhipped	<i>quantity_product</i>	FLOAT Example: <i>3.92</i>	Reference: CMM2009-06, annex 1, para 5. The weight of product transhipped, measured in metric tonnes.

RECORD NAME: *td_re_pr_onboard*

All of the fields listed below are required in each record. No field may be missing or null.

Information Required	Field Name	Field Format	Notes
The Receiving Vessel's WCPFC Identification Number (WIN)	<i>rec_win</i>	VARCHAR(16) Example: <i>DEF5678</i>	Reference: CMM2009-06, annex 1, para 3. Validation: Must be a valid WIN, on the date of transshipment, in the WCPFC Record of Fishing Vessels.
The date and time that the declaration was submitted	<i>submit_time</i>	VARCHAR(22) ISO 8601 – Date and time without seconds. See Appendix 2. Example: <i>2016-11-25T14:46+11:00</i>	NEW & DUPLICATE - Rationale: Needed (along with the <i>rec_win</i> field) to allow <i>td_receiving_vessel</i> records and <i>td_ov_product</i> records to be correctly linked. Validation: Must have a matching entry in the <i>td_receiving_vessel</i> record.
The species of the product that was on-board before the transshipment started	<i>species</i>	CHAR(3), Uppercase The three-letter FAO species code for the species. Example: <i>SKJ</i>	Reference: CMM2009-06, annex 1, para 11. Validation: Must be a valid three-letter FAO species code - www.fao.org/fishery/collection/asfis/en
The geographic origin (RFMO) of the product that was onboard before the transshipment started	<i>origin_loc</i>	VARCHAR(13), Uppercase Example: <i>WCPFC</i>	Reference: CMM2009-06, annex 1, para 11. Validation: Must be a valid RFMO Area code as found in Appendix 5.
The quantity of the product that was on-board before the transshipment started	<i>quantity_product</i>	FLOAT Example: <i>3.92</i>	Reference: CMM2009-06, annex 1, para 11. The weight of product on-board, measured in metric tonnes.

4.c Standards for cancelling a previously submitted e-report

<i>td_re_cancel</i>

It will be possible to use e-reporting to cancel a previously submitted Receiving Vessel Transshipment Declaration. For each Receiving Vessel Transshipment Declaration cancellation, there must be one *td_re_cancel* record.

RECORD NAME: <i>td_re_cancel</i> All of the fields listed below are required in each record. No field may contain missing or null values.			
Information Required	Field Name	Field Format	Notes
The Receiving Vessel's WCPFC Identification Number (WIN)	<i>rec_win</i>	VARCHAR(16) Example: <i>DEF5678</i>	Reference: CMM2009-06, annex 1, para 3. Validation: Must be a valid WIN, on the date of transshipment, in the WCPFC Record of Fishing Vessels.
The WCPFC Transshipment ID for the Receiving Vessel Transshipment Declaration that is being cancelled	<i>trans_id</i>	CHAR(16) Example: <i>FGYH7892ELPU3087</i>	Rationale: Needed to allow already submitted transshipment declarations to be amended. Validation: Must be a valid WCPFC Transshipment ID, for a transshipment declaration that had previously been made by the receiving vessel. Note: Will have been sent by the WCPFC to the contact email address when the Transshipment Declaration was first submitted.
A contact email address	<i>contact_email</i>	VARCHAR(50) Example: <i>a.carrier@gmail.com</i>	Rationale: An email address that WCPFC should use to (1) confirm receipt of this cancellation and (2) contact if there are any problems with the quality / completeness of this cancellation. Validation: Must be a valid email address.

4.d Notes

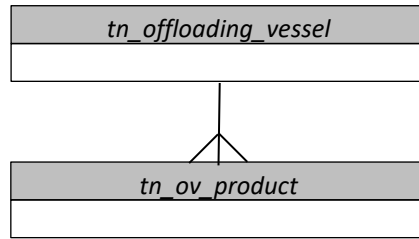
For the e-reporting of Transshipment Declarations by Receiving Vessels:

1. the requirement for the receiving vessel to supply a “Unique Document Identifier” (CMM2009-06, annex 1, para 1) would be waived.
2. the requirement for the receiving vessel to supply the signature of a WCPFC observer (CMM2009-06, annex 1, para 10) would be waived.
3. the requirement for the receiving vessel to supply the fishing gear used to take the fish (CMM2009-06, annex 1, para 4) would be waived. The offloading vessel would still be required to supply this information.

DRAFT

5. OFFLOADING VESSEL TRANSHIPMENT NOTICES

5.a Standards for the structure of new or amended e-reports



For each Offloading Vessel Transhipment Notice, there must be:

- one *tn_offloading_vessel* record
- one *tn_ov_product* record for each combination of Species / Processed State / Fresh or Frozen / Location of Catch product that will be transhipped. For example, the information shown below would be represented by four *tn_ov_product* records.

Species	Processed State	Location of Catch	Quantity
ALB	Gutted & Headed	Cook Islands EEZ	1.25t
ALB	Gilled, Gutted & Tailed	Cook Islands EEZ	4.829t
ALB	Gilled, Gutted & Tailed	WCPFC High Seas	1.175t
BET	Gilled, Gutted & Tailed	WCPFC High Seas	3.678t

Any Offloading Vessel Transhipment Notice must be able to be uniquely identified by concatenating:

- the vessel's WCPFC WIN number; and
- the date and time that the notice was submitted.

The *tn_ov_product* records for a single transhipment must be able to be logically linked to the *tn_offloading_vessel* record for the same transhipment, using the concatenated offloading vessel's WIN number and date / time that the notice was submitted.

5.b Standards for the records and fields to be provided

RECORD NAME: <i>tn_offloading_vessel</i>			
All of the fields listed below are required in each record. No field may contain missing or null values.			
Information Required	Field Name	Field Format	Notes
The Offloading Vessel's WCPFC Identification Number (WIN)	<i>off_win</i>	VARCHAR(16) Example: <i>ABC1234</i>	Reference: CMM2009-06, annex 3, para 1. Validation: Must be a valid WIN, on the date of transshipment, in the WCPFC Record of Fishing Vessels.
The Offloading Vessel's Name	<i>off_vessel</i>	VARCHAR(64) Example: <i>Lucky Fisher III</i>	Reference: CMM2009-06, annex 3, para 1. Validation: Must be the vessel name which, in the WCPFC Record of Fishing Vessels, corresponds to the <i>off_win</i> provided.
The Receiving Vessel's WCPFC Identification Number (WIN)	<i>rec_win</i>	VARCHAR(16) Example: <i>DEF5678</i>	Reference: CMM2009-06, annex 3, para 2. Validation: Must be a valid WIN, on the date of transshipment, in the WCPFC Record of Fishing Vessels.
The Receiving Vessel's name	<i>rec_vessel</i>	VARCHAR(64) Example: <i>Super Hauler 2</i>	Reference: CMM2009-06, annex 3, para 2. Validation: Must be the vessel name which, in the WCPFC Record of Fishing Vessels, corresponds to the <i>rec_win</i> provided.
The date on which the transshipment is proposed to start	<i>prop_date</i>	VARCHAR(22) ISO8601, – UTC date or local datetime. See Appendix 2. Example: <i>2016-11-25Z</i> <i>2016-11-25T00:00+0700</i>	Reference: CMM2009-06, annex 1, para 9. Validation: Must be a date in the recent past. If a UTC date is used then this must include the "Z" suffix. If a local datetime is used then this must include the hours offset from UTC time as the suffix.
The location at which the transshipment is proposed to start	<i>prop_loc</i>	VARCHAR(13), Uppercase Example: <i>WCPFC-HS</i>	Reference: CMM2009-06, annex 3, para 5. Validation: Must be a valid location code as found in Appendix 3.
The latitude at which the transshipment is proposed to start	<i>prop_latitude</i>	CHAR(5) ISO6709, to the nearest 0.1 degree ±DD.D Example for Pohnpei Airport: <i>+07.0</i>	Reference: CMM2009-06, annex 3, para 5. Validation: Must be a valid latitude.

The longitude at which the transshipment is proposed to start	<i>prop_longitude</i>	CHAR(6) ISO6709, to the nearest 0.1 degree ±DDD.D Example for Pohnpei Airport: +158.2	Reference: CMM2009-06, annex 3, para 5. Validation: (1) Must be a valid longitude and (2) should, when considered along with the <i>prop_latitude</i> , represent a location that is at sea and within the <i>prop_loc</i> .
Whether this is a new transshipment notice, or an amendment to a previous transshipment declaration	<i>trans_id</i>	CHAR(16) Example: <i>New-Transshipment</i>	NEW - Rationale: Needed to allow already submitted transshipment declarations to be amended. Validation: In the case of new transshipment notices, must be "New-Transshipment". In the case of amendments to a previous transshipment notice, must be the Transshipment ID that the WCPFC sent to the contact email address when confirming receipt of the transshipment notice.
The date and time that the notice was submitted	<i>submit_time</i>	VARCHAR(22) ISO 8601 – Date and time without seconds. See Appendix 2. Example: <i>2016-11-25T14:46+11:00</i>	NEW - Rationale: Needed (along with the <i>off_winfield</i>) to allow <i>tn_offloading_vessel</i> records and <i>tn_ov_product</i> records to be correctly linked. Validation: Must be a recent earlier date/time, including the hours offset from UTC time. Note: Could be automatically generated by the submitters computer system at the moment that the declaration was sent.
The number of transhipped product records that are being submitted	<i>product_count</i>	INTEGER Example: 25	NEW - Rationale: Needed to ensure that product to be transhipped records have not been lost or duplicated in transmission. Note: Could be automatically generated by the submitters computer system at the moment that the declaration was sent.
The CCM responsible for reporting this transshipment	<i>reporting_ccm</i>	CHAR(2) Example: VU	NEW – A two letter code representing the CCM responsible for reporting the transshipment. Validation: Must be a valid CCM WCPFC alpha-2 two-letter Country Code.
A contact email address	<i>contact_email</i>	VARCHAR(50) Example: <i>a.fisher@gmail.com</i>	NEW - Rationale: An email address that WCPFC should use to (1) confirm receipt of this notice and (2) contact if there are any problems with the quality / completeness of this notice. Validation: Must be a valid email address.

RECORD NAME: *tn_ov_product*

All of the fields listed below are required in each record. No field may contain missing or null values.

Information Required	Field Name	Field Format	Notes
The Offloading Vessel's WCPFC Identification Number (WIN)	<i>off_win</i>	VARCHAR(16) Example: <i>ABC1234</i>	Reference: CMM2009-06, annex 3, para 1. Validation: Must be a valid WIN, on the date of transshipment, in the WCPFC Record of Fishing Vessels.
The date and time that the notice was submitted	<i>submit_time</i>	VARCHAR(22) ISO 8601 – Date and time without seconds. See Appendix 2. Example: <i>2016-11-25T14:46+11:00</i>	NEW & DUPLICATE - Rationale: Needed (along with the <i>off_win</i> field) to allow <i>td_offloading_vessel</i> records and <i>td_ov_product</i> records to be correctly linked. Validation: Must have a matching entry in the <i>td_offloading_vessel</i> record.
The species of the product that will be transhipped	<i>species</i>	CHAR(3), Uppercase The three-letter FAO species code for the species. Example: <i>SKJ</i>	Reference: CMM2009-06, annex 3, para 3. Validation: Must be a valid three-letter FAO species code - www.fao.org/fishery/collection/asfis/en
The processed state for the product that will be transhipped	<i>processed_state</i>	CHAR(2), Uppercase Example: <i>WH</i>	Reference: CMM2009-06, annex 3, para 3. Validation: Must be a valid processed state code as found in Appendix 4.
The geographic location of the catch	<i>catch_loc</i>	VARCHAR(13), Uppercase Example: <i>WCPFC-HS</i>	Reference: CMM2009-06, annex 3, para 6. Validation: Must be a valid location code as found in Appendix 3.
The quantity of the product that will be transhipped	<i>quantity_product</i>	FLOAT Example: <i>3.92</i>	Reference: CMM2009-06, annex 3, para 4. The weight of product to be transhipped, measured in metric tonnes.

5.c Standards for cancelling a previous e-report

<i>tn_ov_cancel</i>

It will be possible to use e-reporting to cancel a previously submitted Offloading Vessel Transhipment Notice. For each Offloading Vessel Transhipment Notice cancellation, there must be one *tn_ov_cancel* record.

RECORD NAME: <i>tn_ov_cancel</i> All of the fields listed below are required in each record. No field may contain missing or null values.			
Information Required	Field Name	Field Format	Notes
The Offloading Vessel's WCPFC Identification Number (WIN)	<i>off_win</i>	VARCHAR(16) Example: <i>ABC1234</i>	Reference: CMM2009-06, annex 3, para 1. Validation: Must be a valid WIN, on the date of transhipment, in the WCPFC Record of Fishing Vessels.
The WCPFC Transhipment ID for the Offloading Vessel Transhipment Notice that is being cancelled	<i>trans_id</i>	CHAR(16) Example: <i>FGYH7892ELPU3087</i>	Rationale: Needed to allow already submitted transhipment notices to be amended. Validation: Must be a valid WCPFC Transhipment ID, for a transhipment notice that had previously been made by the offloading vessel. Note: Will have been sent by the WCPFC to the contact email address when the Transhipment Notice was first submitted.
A contact email address	<i>contact_email</i>	VARCHAR(50) Example: <i>a.fisher@gmail.com</i>	Rationale: An email address that WCPFC should use to (1) confirm receipt of this cancellation and (2) contact if there are any problems with the quality / completeness of this cancellation. Validation: Must be a valid email address.

6. RECEIVING VESSEL TRANSHIPMENT NOTICES

6.a Standards for the structure of new or amended e-reports

<i>tn_receiving_vessel</i>

For each Receiving Vessel Transhipment Notice, there must be one *tn_receiving_vessel* record.

Any Receiving Vessel Transhipment Notice must be able to be uniquely identified by concatenating:

- the vessel's WCPFC WIN number; and
- the date and time that the notice was submitted.

6.b Standards for the records and fields to be provided

RECORD NAME: <i>tn_receiving_vessel</i>			
All of the fields listed below are required in each record. No field may contain missing or null values.			
Information Required	Field Name	Field Format	Notes
The Offloading Vessel's WCPFC Identification Number (WIN)	<i>off_win</i>	VARCHAR(16) Example: <i>ABC1234</i>	Reference: CMM2009-06, annex 3, para 1. Validation: Must be a valid WIN, on the date of transhipment, in the WCPFC Record of Fishing Vessels.
The Offloading Vessel's Name	<i>off_vessel</i>	VARCHAR(64) Example: <i>Lucky Fisher III</i>	Reference: CMM2009-06, annex 3, para 1. Validation: Must be the vessel name which, in the WCPFC Record of Fishing Vessels, corresponds to the <i>off_win</i> provided.
The Receiving Vessel's WCPFC Identification Number (WIN)	<i>rec_win</i>	VARCHAR(16) Example: <i>DEF5678</i>	Reference: CMM2009-06, annex 3, para 2. Validation: Must be a valid WIN, on the date of transhipment, in the WCPFC Record of Fishing Vessels.
The Receiving Vessel's name	<i>rec_vessel</i>	VARCHAR(64) Example: <i>Super Hauler 2</i>	Reference: CMM2009-06, annex 3, para 2. Validation: Must be the vessel name which, in the WCPFC Record of Fishing Vessels, corresponds to the <i>rec_win</i> provided.

The date on which the transshipment is proposed to start	<i>prop_date</i>	<p>VARCHAR(22)</p> <p>ISO8601, – UTC date or local datetime. See Appendix 2.</p> <p>Example:</p> <p>2016-11-25Z</p> <p>2016-11-25T00:00+0700</p>	<p>Reference: CMM2009-06, annex 1, para 9.</p> <p>Validation: Must be a date in the recent past. If a UTC date is used then this must include the “Z” suffix. If a local datetime is used then this must include the hours offset from UTC time as the suffix.</p>
The location at which the transshipment is proposed to start	<i>prop_loc</i>	<p>VARCHAR(13), Uppercase</p> <p>Example: WCPFC-HS</p>	<p>Reference: CMM2009-06, annex 3, para 5.</p> <p>Validation: Must be a valid location code as found in Appendix 3.</p>
The latitude at which the transshipment is proposed to start	<i>prop_latitude</i>	<p>CHAR(5)</p> <p>ISO6709, to the nearest 0.1 degree</p> <p>±DD.D</p> <p>Example for Pohnpei Airport: +07.0</p>	<p>Reference: CMM2009-06, annex 3, para 5.</p> <p>Validation: Must be a valid latitude.</p>
The longitude at which the transshipment is proposed to start	<i>prop_longitude</i>	<p>CHAR(6)</p> <p>ISO6709, to the nearest 0.1 degree</p> <p>±DDD.D</p> <p>Example for Pohnpei Airport: +158.2</p>	<p>Reference: CMM2009-06, annex 3, para 5.</p> <p>Validation: (1) Must be a valid longitude and (2) Should, when considered along with the <i>prop_latitude</i>, represent a location that is at sea and within the <i>prop_loc</i>.</p>
Whether this is a new transshipment notice, or an amendment to a previous transshipment notice	<i>trans_id</i>	<p>CHAR(16)</p> <p>Example:</p> <p><i>New-Transshipment</i></p>	<p>NEW - Rationale: Needed to allow already submitted transshipment notices to be amended.</p> <p>Validation: In the case of new transshipment notices, must be “New-Transshipment”. In the case of amendments to a previous transshipment notice, must be the Transshipment ID that the WCPFC sent to the contact email address when confirming receipt of the notice.</p>
The date and time that the notice was submitted	<i>submit_time</i>	<p>VARCHAR(22)</p> <p>ISO 8601 – Date and time without seconds. See Appendix 2.</p> <p>Example:</p> <p>2016-11-25T14:46+11:00</p>	<p>NEW - Rationale: Needed to ensure consistency with the standards documented in sections 3.b, 4.b, and 5.b.</p> <p>Validation: Must be a recent earlier date/time including the hours offset from UTC time.</p> <p>Note: Could be automatically generated by the submitters computer system at the moment that the declaration was sent.</p>

The CCM responsible for reporting this transshipment	<i>reporting_ccm</i>	CHAR(2) Example: VU	NEW – A two letter code representing the CCM responsible for reporting the transshipment. Validation: Must be a valid CCM WCPFC alpha-2 two-letter Country Code.
A contact email address	<i>contact_email</i>	VARCHAR(50) Example: <i>a.carrier@gmail.com</i>	NEW - Rationale: An email address that WCPFC should use to (1) confirm receipt of this notice and (2) contact if there are any problems with the quality / completeness of this notice. Validation: Must be a valid email address.

DRAFT

6.c Standards for cancelling a previous e-report

<i>tn_re_cancel</i>

It will be possible to use e-reporting to cancel a previously submitted Receiving Vessel Transhipment Notice. For each Receiving Vessel Transhipment Notice cancellation, there must be one *tn_re_cancel* record.

RECORD NAME: <i>tn_re_cancel</i>			
All of the fields listed below are required in each record. No field may contain missing or null values.			
Information Required	Field Name	Field Format	Notes
The Receiving Vessel's WCPFC Identification Number (WIN)	<i>rec_win</i>	VARCHAR(16) Example: <i>DEF5678</i>	Reference: CMM2009-06, annex 3, para 2. Validation: Must be a valid WIN, on the date of transhipment, in the WCPFC Record of Fishing Vessels.
The WCPFC Transhipment ID for the Receiving Vessel Transhipment Notice that is being cancelled	<i>trans_id</i>	CHAR(16) Example: <i>FGYH7892ELPU3087</i>	Rationale: Needed to allow already submitted transhipment notices to be amended. Validation: Must be a valid WCPFC Transhipment ID, for a transhipment notice that had previously been made by the receiving vessel. Note: Will have been sent by the WCPFC to the contact email address when the Transhipment Notice was first submitted.
A contact email address	<i>contact_email</i>	VARCHAR(50) Example: <i>a.carrier@gmail.com</i>	Rationale: An email address that WCPFC should use to (1) confirm receipt of this cancellation and (2) contact if there are any problems with the quality / completeness of this cancellation. Validation: Must be a valid email address.

6.d Notes

For the e-reporting of Transhipment Notices by receiving vessels:

- the requirement for the receiving vessel to supply information on the product to be transhipped (CMM2009-06, annex 3, para 3) would be waived. The offloading vessel would still be required to supply this information.

7. STANDARDS FOR THE TRANSMISSION OF TRANSHIPMENT E-REPORTS

Initially, JSON will be the format for data transmission. Subsequently, XML and FLUX will be added as formats for data transmission. Vessels, agents or CCMs wishing to e-report Transshipment Declarations and Transshipment Notices can choose which of these three formats they use.

Transmission Format Chosen	Standards
XML	<ol style="list-style-type: none"> 1. There must be one XML Document for each Transshipment Declaration or Transshipment Notice being sent. 2. Within each XML Document, there must be one root element named "WCPFC_Transhipment". 3. Nested within the root element, for each record being transmitted there must be one 1st level element. These 1st level elements must have the appropriate Record Name, as defined in sections 3, 4, 5 and 6. 4. Nested within each 1st level element, for each field being transmitted there must be one 2nd level element. These 2nd level elements must have the appropriate Field Name, as defined in sections 3, 4, 5 and 6. 5. Each 2nd level element must contain text appropriate to its Field Name, and fulfilling the standards documented in sections 3, 4, 5 and 6.
JSON	<ol style="list-style-type: none"> 6. There must be one JSON File for each Transshipment Declaration or Transshipment Notice being sent. 7. Within each JSON File, there must be one root object with the key "WCPFC_Transhipment". 8. The value of WCPFC_Transhipment must be a series of 1st level objects, one for each record being transmitted. 9. The keys for these 1st level objects must be the appropriate Record Names, as defined in sections 3, 4, 5 and 6. 10. The values of these 1st level objects must be a series of 2nd level objects, one for each field being transmitted. 11. The keys for these 2nd level objects must be the appropriate Field Names, as defined in sections 3, 4, 5 and 6. 12. Each 2nd level object must contain a value appropriate to its Field Name, and fulfilling the standards documented in sections 3, 4, 5 and 6.
FLUX	Details to be determined in 2019.

APPENDICES

APPENDIX 1 – TRANSHIPMENT FISHING GEAR CODES

Fishing Gear	Code
With purse lines (purse seine)	PS
- one boat operated purse seines	PS1
- two boat operated purse seines	PS2
Without purse lines (lampara)	LA
Beach seines	SB
Boat or vessel seines	SV
- Danish seines	SDN
- Scottish seines	SSC
- Pair seines	SPR
Seine nets (not specified)	SX
Portable lift nets	LNP
Boat-operated lift nets	LNB
Shore-operated stationary lift nets	LNS
Lift nets (not specified)	LN
Set gillnets (anchored)	GNS
Driftnets	GND
Encircling gillnets	GNC
Fixed gillnets (on stakes)	GNF
Trammel nets	GTR
Combined gillnets-trammel nets	GTN
Gillnets and entangling nets (not specified)	GEN
Gillnets (not specified)	GN
Handlines and pole-lines (hand operated)	LHP

Handlines and pole-lines (mechanized)	LHM
Set longlines	LLS
Drifting longlines	LLD
Longlines (not specified)	LL
Trolling lines	LTL
Hooks and lines (not specified)	LX
Harpoons	HAR
Miscellaneous gear	MIS
Recreational fishing gear	RG

Notes:

- these are the same gear codes contained in Attachment 6 of CMM2014-03 (Standards, Specifications and Procedures for the Western and Central Pacific Fisheries Commission Record of Fishing Vessels).
- the Commission may update its Transshipment Fishing Gear Codes at any time. When this occurs, the most recent Transshipment Fishing Gear Codes that have been approved by the Commission must be used.

APPENDIX 2 – DATE/TIME FORMAT

DATE and DATE/TIME fields must adhere to the ISO8601 standard formats listed in the table below.

For fields requiring	Use the format	Example
Date (UTC)	[YYYY]-[MM]-[DD] Z	2016-06-23Z
Date/time (UTC)	[YYYY]-[MM]-[DD]T[HH]:[MM]Z	2016-06-23T20:32Z
Date/time (Local)	[YYYY]-[MM]-[DD]T[HH]:[MM]±[HH]:[MM]	2016-06-23T20:32+11:00 (Note, this example illustrates a datetime in the Pohnpei time zone)

APPENDIX 3 – TRANSHIPMENT LOCATION CODES

Location	Code
EEZ of American Samoa	EEZ-ASM
EEZ of Australia	EEZ-AUS
EEZ of Commonwealth of the Northern Mariana Islands	EEZ-MNP
EEZ of Cook Islands	EEZ-COK
EEZ of Federated States of Micronesia	EEZ-FSM
EEZ of Fiji	EEZ-FJI
EEZ of French Polynesia	EEZ-PYF
EEZ of Guam	EEZ-GUM
EEZ of Indonesia	EEZ-IDN
EEZ of Japan	EEZ-JPN
EEZ of Kiribati	EEZ-KIR
EEZ of Nauru	EEZ-NRU
EEZ of New Caledonia	EEZ-NCL
EEZ of New Zealand	EEZ-NZL
EEZ of Niue	EEZ-NIU
EEZ of Palau	EEZ-PLW
EEZ of Papua New Guinea	EEZ-PNG
EEZ of Philippines	EEZ-PHL
EEZ of Republic of Marshall Islands	EEZ-MHL
EEZ of Samoa	EEZ-WSM
EEZ of Solomon Islands	EEZ-SLB
EEZ of Tokelau	EEZ-TKL
EEZ of Tonga	EEZ-TON
EEZ of Tuvalu	EEZ-TUV

EEZ of United States of America	EEZ-USA
EEZ of Vanuatu	EEZ-VUT
EEZ of Wallis and Futuna	EEZ-WLF
WCPFC Convention Area on the High Seas	WCPFC-HS
WCPFC/IATTC Overlap Area	Overlap
Outside the Convention Area	Outside WCPFC

Note

- these are the same locations listed in the footnotes to CMM2009-06, Annex I and Annex III; although the codes have been developed for this standard.
- the Commission may update its Transshipment Location Codes at any time. When this occurs, the most recent Transshipment Location Codes that have been approved by the Commission must be used.

APPENDIX 4 – TRANSHIPMENT PROCESSED STATE CODES

Processed State	Code
Whole	WH
Gutted and Headed	GH
Gutted, Headed and Tailed	GT
Gutted Only, not Gilled	GO
Gilled and Gutted	LG
Gilled, Gutted and Tailed	LT
Shark Fins	SF
Filletted	FL
Other, not listed above	OT

Note that the Commission may update its Transshipment Processed State Codes at any time. When this occurs, the most recent Transshipment Processed State Codes that have been approved by the Commission must be used.

APPENDIX 5 – TRANSHIPMENT RFMO AREA CODES

Location	Code
Within the WCPFC Convention Area	WCPFC
WCPFC/IATTC Overlap Area	Overlap
Within the IOTC Agreement Area	IOTC
Within the IATTC Convention Area	IATTC
Within the ICCAT Convention Area	ICCAT
Outside Tuna RFMOs	Outside TRFMO

Note that the Commission may update its Transshipment RFMO Area Codes at any time. When this occurs, the most recent Transshipment RFMO Area Codes that have been approved by the Commission must be used.

---END---

Western and Central Pacific Fisheries Commission (WCPFC)

STANDARDS FOR THE E-REPORTING OF TRANSHIPMENTS - EXAMPLE

If the reporting CCM was making the following Receiving Vessel Declaration	then the JSON data shown below is what the reporter's computer would transmit to the WCPFC computer.
	<pre>{ "WCPFC_Transhipment": { "td_receiving_vessel": { "rec_win": "JRUL", "trans_Longitude": "+158.4", "rec_vessel": "SHOFUKU MARU No.1", "product_count": 5, "off_win": "NG1-124", "trans_id": "New-Transhipment", "contact_email": "happy.transhipper@fishrus.co.jp", "obs_name": "John Smith", "onboard_Count": 5, "off_vessel": "SEIKOH MARU NO.38", "trans_latitude": "+11.2", "submit_time": "2018-06-30T09:37+11:00", "trans_loc": "WCPFC-HS", "trans_date": "2018-08-06T00:00+11:00", "td_re_pr_transhipped": [{ "rec_win": "JRUL", "submit_time": "2018-06-30T09:37+11:00", "processed_state": "GH", "fresh_frozen": "Frozen", "quantity_product": "123.4", "species": "SKJ" }, { "rec_win": "JRUL", "submit_time": "2018-06-30T09:37+11:00", "processed_state": "WH", "fresh_frozen": "Frozen", "quantity_product": "34.0", "species": "SKJ" }, { "rec_win": "JRUL", "submit_time": "2018-06-30T09:37+11:00", "processed_state": "WH", "fresh_frozen": "Fresh", "quantity_product": "1.2", "species": "SKJ" }, { "rec_win": "JRUL", "submit_time": "2018-06-30T09:37+11:00", "processed_state": "GO", "fresh_frozen": "Frozen", "quantity_product": "15.2", "species": "BET" }, { "rec_win": "JRUL", "submit_time": "2018-06-30T09:37+11:00", "processed_state": "GT", "fresh_frozen": "Frozen", "quantity_product": "78.4", "species": "YFT" }], "td_re_pr_onboard": [{ "rec_win": "JRUL", "submit_time": "2018-06-30T09:37+11:00", "origin_loc": "WCPFC", "quantity_product": "234.8", "species": "BET" }, { "rec_win": "JRUL", "submit_time": "2018-06-30T09:37+11:00", "origin_loc": "WCPFC", "quantity_product": "2345.8", "species": "SKJ" }, { "rec_win": "JRUL", "submit_time": "2018-06-30T09:37+11:00", "origin_loc": "Overlap", "quantity_product": "12.6", "species": "SKJ" }, { "rec_win": "JRUL", "submit_time": "2018-06-30T09:37+11:00", "origin_loc": "IATTC", "quantity_product": "78.2", "species": "SKJ" }, { "rec_win": "JRUL", "submit_time": "2018-06-30T09:37+11:00", "origin_loc": "WCPFC", "quantity_product": "0.6", "species": "YFT" }] } } }</pre>

Note (1) the size of the data transmitted to the would be less than 1900 bytes in size, and (2) an easy way to view JSON data is to cut-and-paste it into an online tool such as - <https://jsoneditoronline.org/>