



**COMMISSION  
FOURTEENTH REGULAR SESSION**  
Manila, Philippines  
3 – 7 December 2017

---

**IMPLEMENTING E-REPORTING OF TRANSHIPMENT  
DECLARATIONS AND TRANSHIPMENT NOTICES**

---

**WCPFC14-2017-21<sup>1</sup>**  
**15 November 2017**

**Paper prepared by the Secretariat**

**Purpose**

1. This paper presents:
  - A set of draft standards for the E-reporting of high seas transshipment declarations and transshipment notices, taking into consideration the requirements of CMM 2009-06 Annex I and Annex III and comments received from TCC13; and
  - an indicative timetable and justification for a proposed budget in support of implementing the E-reporting of transshipment declarations and transshipment notices at the Secretariat during 2018.

**Background**

2. CMM 2009-06 defines the requirements for CCMs to supply high seas transshipment declarations and transshipment notices to the Executive Director; and documents the information to be included in the declarations and notices. For the past eight years' the Commission has been receiving high seas transshipment information, mostly in the form of scanned documents submitted, on a variety of ad-hoc forms, via email. These scanned documents are then data entered at the Commission. However, many (perhaps most) fishing vessels also collect transshipment information for their own, or their company, purposes. As a consequence, transshipment information is being double or triple data entered.
3. At WCPFC13 the Commission adopted *the Standards, Specifications and Procedures for Electronic Reporting in the WCPFC* (WCPFC13 Summary Report paragraph 584 and Attachment T). It was intended that as additional E-reporting standards are adopted by the Commission, they would be incorporated as new attachments within the E-reporting standard, specifications and procedures. Appropriate amendments would subsequently be made to the cover document for the E-Reporting SSPs in WCPFC13 Summary Report Attachment T.
4. The Summary Report of the ER and EM Working Group second meeting (WCPFC-TCC122016-17) was also adopted by WCPFC13 (WCPFC13 Summary Report paragraph 583). One of the recommendations from the Working Group meeting in 2016, was for the Secretariat to “develop draft E-reporting standards for transshipment reporting requirements (particularly declarations, notification and observer) required under CMM 2009-06.
5. For the 2017 budget, WCPFC13 made provision to provide interim support for an ER-EM technical coordinator position at the Secretariat on the basis of the acknowledged need for the Secretariat to undertake critical work in this area. Funds were provided to support work by a consultant for part of

---

<sup>1</sup> Updates **WCPFC-TCC13-2017-15**

the year, and the Secretariat was also tasked to explore options supplementing this with voluntary contributions (either financial or through secondments from CCMs and other sources). Since WCPFC13, the Secretariat has been working with a WCPFC member who has indicated an interest and ability to provide support to the Secretariat in the E-reporting area. At the time of writing this paper, the contractual issues for this supplementary support to the Secretariat were still being finalised.

6. In August 2017, the Secretariat engaged Mr Kim Duckworth on a consultancy basis, primarily to assist the WCPFC Secretariat with scoping and developing a work plan for implementation of MCS/compliance E-reporting at the Secretariat. The scope of this work will be for CMM reporting that are presently received and data entered at the WCPFC Secretariat offices, particularly high seas transshipment notices and declarations, reporting in the event of VMS malfunction and high seas pocket reporting.

### **Draft standards for the E-reporting of high seas transshipment declarations and transshipment notices**

7. The first output of the Secretariat's work was draft standards for the E-reporting of transshipment declarations and transshipment notices (**Attachment 1**). The development of this draft standards considered the WCPFC13 adopted E-Reporting SSPs for operational level catch and effort data, and the specific requirements of CMM 2009-06. The draft standards for the E-reporting of transshipment declarations and transshipment notices were presented at TCC13 (WCPFC-TCC13-2017-15). The comments received during TCC13 were generally supportive. TCC13 noted these standards and requested written submissions before 1 November 2017. The agreed outcome from TCC13 is reproduced here for ease of reference:

“TCC13 noted the Secretariats paper (TCC13-2017-15) presenting draft E-reporting standards for high seas transshipment declarations and notifications. CCMs with additional comments were encouraged to provide them to the Secretariat by November 1 2017. The Secretariat will revise the version in advance of WCPFC14, as needed.”

8. Japan and Chinese Taipei provided written submissions on the TCC13 version of the draft standards. These submissions have been incorporated into version 2 of the standards. FFA's submission to WCPFC14 (WCPFC14-2017-DP09) addressing broader issues relating to electronic reporting and electronic monitoring was also considered. This submission has not resulted in any changes to the standards, but has been noted by the Secretariat.
9. As was prefaced in the version presented to TCC13, the draft standards propose some deviations from the information requirements contained in annex I and annex III of CMM 2009-06. The draft standards do not propose collecting any additional operational data. The draft standards do propose collecting the senders email address. The draft standards do propose that the collection of some operational data, as required by Annex I and Annex III of CMM2009-06, is waived in the case of information submitted via e-reporting. This is specifically the case where e-reporting offers the opportunity to collect equivalent information without double data entry. All of these proposals are clearly documented within the draft standards.
10. Despite there being some deviations from the exact information requirements contained in annex I and annex III of CMM 2009-06 in the draft standards for E-reporting of high seas transshipment declarations and transshipment notices, the Secretariat requests that implementation at the Secretariat be allowed to proceed based on the draft standards for E-reporting (set out in **Attachment 1**).
11. If the Commission does wish to conduct a review of the contents of annex I and annex III of CMM 2009-06 without delaying the introduction of Transshipment E-reporting, then it is a realistic option for the implementation and review to proceed in parallel, as it is unlikely that the review would identify any changes that would be overly onerous to retrofit into the Secretariats e-reporting system. One option could be to task the Secretariat to provide a paper to TCC14 that presents and further considers these aspects.
12. SC13 and TCC13 had recommended that the ERandEM Working Group meet early in 2018. If approved to meet in 2018, it is suggested that the ERandEM Working Group should also be tasked to

review and consider the latest version of the draft standards for the E-reporting of high seas transshipment declarations and transshipment notices prepared by the Secretariat.

**Proposed timetable and budget for implementing the E-reporting of high seas transshipment declarations and high seas transshipment notices at the Secretariat**

13. The second output of the Secretariat's work was a plan for commencing implementation at the Secretariat during 2018, for the E-reporting of high seas transshipment declarations and transshipment notices. The implementation plan was not available in time for consideration at TCC13.
14. The concept for implementing e-reporting at the Secretariat, is proposed to be based on the following three principles:
  - i. data entry would occur once at the vessel, using either the vessel's software or using a data entry tool provided by the WCPFC; then
  - ii. if that data complied with WCPFC transshipment e-reporting standard, it would be loaded into the Commission's databases with minimal (ideally zero) human intervention; and
  - iii. the option for vessels to manually report transshipments would remain for an interim period to be determined by the Commission.
15. The expected benefits from implementing e-reporting at the Secretariat, over past manual transshipment reporting mechanisms, include:
  1. reducing the costs for the Commission, by reducing the resources that the Commission needs to commit to data entry;
  2. if the fishing industry takes up the opportunity to modify their own software so that it can submit transshipment e-reports - reducing the costs for the industry, by reducing the resources that the industry needs to commit to data entry;
  3. improving the quality of information received, because e-reporting would make it possible to do data quality checks at the source of the data;
  4. improving the timeliness of information availability, because there would be no delay waiting for data entry at the Commission.
16. Although FAC10 directed that the full funding for the ER and EM position was to be included in the 2018 budget, the Secretariat has proposed that the 2018 budget include the full costs to support continuing work supported by a consultant on high seas transshipment E-reporting implementation at the Secretariat, including proposed IT software development. The total proposed budget for 2018 is an amount of \$95,000 (see **WCPFC14-2017-FAC11-10**). It should be noted that if contractual arrangements for voluntary contributions are finalised, the proposed budget for 2018 may be reduced. It is not anticipated that the WCPFC will need to purchase any new IT hardware, or hosting services, in order to implement the transshipment e-reporting system.
17. An indicative timeline based on the above mentioned proposed budget submission is provided in **Table 1** (below).

**Table 1. Indicative Timetable for implementing transshipment e-reporting**

<b>Elapsed time</b>	<b>Task</b>	<b>Complete before</b>
2 weeks	1) Contract software developers. 2) Document roles and governance structures for the WCPFC Transshipment E-reporting project. 3) Further development of functional requirements, following any comments received at WCPFC14.	21 Dec 2017
12 weeks	4) Development of the 1 <sup>st</sup> release of software. The 1 <sup>st</sup> release would meet all of the functional requirements for the system, and would be of a quality / completeness appropriate to undergo full operational testing. 5) Further development of functional requirements in response to requests for clarification from software developers. 6) Identify 5 to 10 vessels that are willing to participate in testing the WCPFC Transshipment E-Reporting system.	15 April 2018
2 weeks	7) 1 <sup>st</sup> round of operational testing, including on fishing vessels.	30 April 2018
2 weeks	8) Development of the 2nd release of software. The 2nd releases would meet all of the requirements for the system, and would correct any deficiencies identified in the 1 <sup>st</sup> round of operational testing.	15 May 2018
2 weeks	9) 2nd round of operational testing, including on fishing vessels.	31 May 2018
2 weeks	10) Development of the 3rd release of software. The 3rd release would meet all of the requirements for the system, would correct any deficiencies identified in the 2nd round of operational testing, and would be appropriate to go into production.	15 June 2018
6 weeks	11) Develop and document new transshipment e-reporting related business processes, and training of WCPFC staff as required. 12) Create user manuals for the new transshipment e-reporting systems. 13) Liaison with CCMs on the introduction of transshipment e-reporting, and training for people outside of the WCPFC as required.	31 July 2018
4 weeks	Contingency	
	<b>WCPFC transshipment e-reporting system operational.</b>	<b>31 August 2018</b>
	<b>Report of progress to TCC14 (and ERandEM WG meeting if approved) in 2018</b>	<b>Sept 2018 (tbc)</b>

**Recommendation**

<p>18. WCPFC14 is invited to:</p> <p>i) Note the updated version of the draft E-reporting standards for high seas transshipment declarations and notifications;</p> <p>ii) Provide in principle support for the Secretariat to proceed with implementing the draft E-reporting for high seas transshipment declarations and notifications set out in <b>Attachment 1</b> as a basis for this implementation work at the Secretariat;</p>
--

- iii) Note the proposed budget for implementing the draft standards for e-reporting for high seas transshipment declarations and notices at the Secretariat; and
- iv) Task the Secretariat with preparing a paper for TCC14, that provides an update on the progress of implementing E-reporting for high seas declarations and notices at the Secretariat, and gives consideration to any suggested amendments to annex I and annex III of CMM2009-06 in the light of the needs and opportunities presented by E-reporting; and
- v) Task the ERandEM Working Group at its next meeting, to review and consider the latest version of the draft standards for the E-reporting of high seas transshipment declarations and notices prepared by the Secretariat.

## Western and Central Pacific Fisheries Commission (WCPFC)

### DRAFT STANDARDS FOR THE E-REPORTING OF TRANSHIPMENT DECLARATIONS AND TRANSHIPMENT NOTICES

13 November 2017

<i>CURRENT VERSION:</i>	2.0
<i>DATE:</i>	13 <sup>th</sup> November 2017
<i>STATUS:</i>	Draft – yet to be approved

<i>Version Number</i>	<i>Date</i>	<i>Approved by</i>	<i>Change</i>	<i>Rationale</i>
2.0	TBA	TBA	Amended section 3.b, 4.b & 5.b; so that the quantity of product transhipped would be transmitted as metric tonnes.	Version 1 had proposed that, when data is transmitted, the quantity of product to be transhipped be recorded in kg. At TCC13 a CCM noted that Annex III of CMM2009-06 required that the quantity of product to be transhipped be reported in tonnage.
			Amended section 1 to remove the reference to the quantity of product to be transhipped being transmitted as kg.	
			Amended the following sections to remove the requirement to transmit the vessel's VID and substitute a requirement to transmit the vessel's WIN: 1, 3a, 3b, 3c, 3d, 4a, 4b, 4c, 4d, 5a, 5b, 5c, 5d, 6a, 6b, 6c & 6d.	Version 1 had proposed that, when data is transmitted, the VID number be used to identify vessels. At TCC13 a CCM noted that CMM2009-06 required that vessels supply their WIN number.
			Added the following sentence to section 1 – "Before the e-reporting of Transhipment Declarations and Transhipment Notices become mandatory, there should be a further opportunity for CCMs to provide feedback on these standards and for improvements to be made."	At TCC13 a CCM noted that, while e-reporting of transhipment data would initially be voluntary, in the long-term it is likely that this would become mandatory. The CCM went on to request that before the e-reporting of transhipment data became mandatory, CCMs should be given a further opportunity to review these standards.
			Added the following sentence to section 1 – "These are standards for the transmission of data from vessels to the WCPFC Secretariat. They are not intended to define the format in which the Secretariat will store this data."	This sentence was added to address a point of confusion that became apparent during informal discussions at TCC13.
			Deleted para 4.d.5	Version 1 included a para 4.d.5 that proposed waiving the requirement in CMM2009-06 for the receiving vessel to

				supply the location that the product transhipped was taken. A re-reading of CMM2009-06 showed that there never was such a requirement, so there is no need to waive it.
<i>1.00 (Draft)</i>	<i>TCC13-September 2017</i>	<i>TBA</i>	TCC13 noted the Secretariats paper (TCC13-2017-15) presenting draft E-reporting standards for high seas transshipment declarations and notifications. CCMs with additional comments were encouraged to provide them to the Secretariat by November 1 2017	

## CONTENTS

1. INTRODUCTION .....	4
2. STANDARDS FOR THE E-REPORTING OF TRANSHIPMENT INFORMATION .....	5
3. OFFLOADING VESSEL TRANSHIPMENT DECLARATIONS.....	6
3.a Standards for the structure of new or amended e-reports .....	6
3.b Standards for the records and fields to be provided .....	7
3.c Standards for cancelling a previously submitted e-report .....	10
3.d Notes.....	11
4. RECEIVING VESSEL TRANSHIPMENT DECLARATIONS.....	12
4.a Standards for the structure of new or amended e-reports .....	12
4.b Standards for the records and fields to be provided .....	13
4.c Standards for cancelling a previously submitted e-report .....	17
4.d Notes.....	17
5. OFFLOADING VESSEL TRANSHIPMENT NOTICES.....	18
5.a Standards for the structure of new or amended e-reports .....	18
5.b Standards for the records and fields to be provided .....	19
5.c Standards for cancelling a previous e-report .....	22
6. RECEIVING VESSEL TRANSHIPMENT NOTICES.....	23
6.a Standards for the structure of new or amended e-reports .....	23
6.b Standards for the records and fields to be provided .....	23
6.c Standards for cancelling a previous e-report .....	25
6.d Notes.....	25
7. STANDARDS FOR THE TRANSMISSION OF TRANSHIPMENT E-REPORTS.....	26
APPENDICES .....	27
APPENDIX 1 – TRANSHIPMENT FISHING GEAR CODES .....	27
APPENDIX 2 – DATE/TIME FORMAT .....	28
APPENDIX 3 – TRANSHIPMENT LOCATION CODES .....	29
APPENDIX 4 – TRANSHIPMENT PROCESSED STATE CODES .....	31
APPENDIX 5 – TRANSHIPMENT RFMO AREA CODES .....	31



## 1. INTRODUCTION

This document sets out the standards for the provision of Transshipment Declarations and Transshipment Notices to the WCPFC through the mechanism of electronic reporting (e-reporting). CMM2009-06 defines the requirements for CCMs to supply Transshipment Declarations and Transshipment Notices to the Executive Director; and documents the information to be included in these. For the past eight years' the Commission has been receiving this transshipment information, mostly in the form of scanned documents submitted via email. These scanned documents are then data entered at the Commission. More recently the Commission has been investigating the options for implementing e-reporting for a range of the information sets that it receives. In an e-reporting scenario: data entry would occur at the vessel, or vessel's agent, or CCM; then the information would then be supplied to the Commission in a format which could be loaded into the Commission's databases with minimal (ideally zero) human intervention. E-reporting has the potential to:

- Improve the quality of information received, because e-reporting makes it possible to do data quality checks at the source of the data
- Improve the timeliness of information availability, because there is no delay waiting for data entry
- Reduce costs for the Commission, by reducing the resources that the Commission must commit to data entry.

Standards are a critical element of any e-reporting infrastructure. For e-reporting to function efficiently, the data sent by the transmitting computer must be in the exact format that the receiving computer is expecting. Where this does not occur, human intervention will be required to re-format the data before it can be loaded. For this reason, e-reporting standards are by their nature: technical, detailed and leaving little scope for ambiguity.

Note that:

- a) These standards do not obligate any vessel, agent or CCM to use e-reporting for Transshipment Declarations and Transshipment Notices. Vessels, agents and CCMs may continue to manually report in accordance with CMM2009-06. Although, if the benefits of e-reporting are to be fully realised, then widespread uptake would be required. It should be anticipated that after some transitional period (defined by the Commission) e-reporting of Transshipment Declarations and Transshipment Notices would become mandatory. Before the e-reporting of Transshipment Declarations and Transshipment Notices became mandatory, there should be a further opportunity for CCMs to provide feedback on these standards and for improvements to be made.
- b) These standards do not amend the timeframes for the provision of Transshipment Declarations and Transshipment Notices, as defined in CMM2009-06.
- c) These standards do not amend who is required to provide Transshipment Declarations and Transshipment Notices, as defined in CMM2009-06.
- d) These standards do not amend the spatial or temporal resolution at which transshipments are reported, as defined in CMM2009-06.
- e) Annex 1 of CMM2009-06 is silent on the units of measure for fish product, while Annex 3 requests the tonnage of product to be transhipped, while being silent on the number of decimal places to which tonnage should be reported. These standards propose that metric tonnes be used as the unit of measure for the e-reporting of Transshipment Declarations and Transshipment Notices, while remaining silent on the number of decimal places to which tonnage should be reported.
- f) These standards are primarily focused on a scenario where data is provided: one event at a time (not aggregated), in near real-time, via computer-to-computer transmission. In this sense, they are unlike the recently adopted E-Reporting Standards for Operational Logsheets, as the logsheet information is typically aggregated for a year then supplied in bulk.

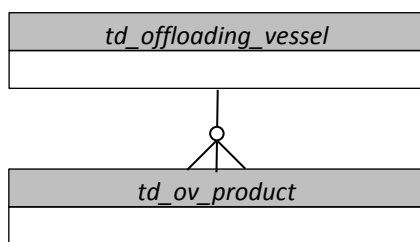
- g) This document includes standards for (1) initially submitting a transshipment declaration or notice and (2) subsequently amending that declaration or notice and (3) cancelling a previous declaration or notice.
- h) Generally, the fields of information specified in these standards are the same as those documented in Annex I and Annex III of CMM2009-06. However, some additional information is required to enable the efficient operation of e-reporting. These instances are clearly identified, and the rationale behind each is documented in the standards that follow. In most cases this additional information could be generated automatically by the sender's computer. These standards do not request any additional information of an operational nature.
- i) One of the additional items of information requested is a contact email address for the submitter. Upon the receipt of a transshipment declaration or notice, the WCPFC would send a confirmation email to the contact email address provided.
- j) These standards propose that the collection of some operational data, as required by Annex I and Annex III of CMM2009-06, is waived in the case of information submitted via e-reporting. This is specifically the case where e-reporting offers the opportunity to collect equivalent information without double data entry. These proposals are documented in the sections 3.d, 4.d and 6.d.
- k) These are standards for the transmission of data from vessels to the WCPFC Secretariat. They are not intended to define the format in which the Secretariat will store this data.

## **2. STANDARDS FOR THE E-REPORTING OF TRANSHIPMENT INFORMATION**

- a) Where a vessel, agent or CCM elects to use e-reporting to comply with paragraph 10 of CMM2009-06; the declaration for the offloading vessel must comply with the standards contained in sections 3.a, 3.b, 3.c and 7 of this document.
- b) Where a vessel, agent or CCM elects to use e-reporting to comply with paragraph 10 of CMM2009-06; the declaration for the receiving vessel must comply with the standards contained in sections 4.a, 4.b, 4.c and 7 of this document.
- c) Where a vessel, agent or CCM elects to use e-reporting to comply with paragraph 35 of CMM2009-06; the notice for the offloading vessel must comply with the standards contained in sections 5.a, 5.b, 5.c and 7 of this document.
- d) Where a vessel, agent or CCM elects to use e-reporting to comply with paragraph 35 of CMM2009-06; the notice for the receiving vessel must comply with the standards contained in sections 6.a, 6.b, 6.c and 7 of this document.

### 3. OFFLOADING VESSEL TRANSHIPMENT DECLARATIONS

#### 3.a Standards for the structure of new or amended e-reports



For each Offloading Vessel Transhipment Declaration, there must be:

- one *td\_offloading\_vessel* record
- one *td\_ov\_product* record for each combination of Species / Processed State / Fresh or Frozen / Location of Catch product that was transhipped. For example, the information shown below would be represented by five *td\_ov\_product* records.

Species	Processed State	Fresh or Frozen	Location of Catch	Quantity
ALB	Gutted & Headed	Fresh	Cook Islands EEZ	1.250t
ALB	Gilled, Gutted & Tailed	Fresh	Cook Islands EEZ	0.525t
ALB	Gilled, Gutted & Tailed	Frozen	Cook Islands EEZ	4.829t
ALB	Gilled, Gutted & Tailed	Frozen	WCPFC High Seas	1.175t
BET	Gilled, Gutted & Tailed	Frozen	WCPFC High Seas	3.678t

Any Offloading Vessel Transhipment Declaration must be able to be uniquely identified by concatenating:

- the vessel's WCPFC WIN number; and
- the date and time that the declaration was submitted.

The *td\_ov\_product* records for a single transhipment, must be able to be logically linked to the *td\_offloading\_vessel* record for the same transhipment, using the concatenated vessel's WIN number and declaration datetime.

### 3.b Standards for the records and fields to be provided

RECORD NAME: <i>td_offloading_vessel</i>			
All of the fields listed below are required in each record. No field may contain missing or null values.			
Information Required	Field Name	Field Format	Notes
The Offloading Vessel's WCPFC Identification Number (WIN)	<i>off_win</i>	VARCHAR(16) Example: <i>ABC1234</i>	Reference: CMM2009-06, annex 1, para 2. Validation: Must be a valid WIN, on the date of transshipment, in the WCPFC Record of Fishing Vessels.
The Offloading Vessel's Name	<i>off_vessel</i>	VARCHAR(64) Example: <i>Lucky Fisher III</i>	Reference: CMM2009-06, annex 1, para 2. Validation: Must be the vessel name which, in the WCPFC Record of Fishing Vessels, corresponds to the <i>off_win</i> provided.
The Receiving Vessel's WCPFC Identification Number (WIN)	<i>rec_win</i>	VARCHAR(16) Example: <i>DEF5678</i>	Reference: CMM2009-06, annex 1, para 3. Validation: Must be a valid WIN, on the date of transshipment, in the WCPFC Record of Fishing Vessels.
The Receiving Vessel's name	<i>rec_vessel</i>	VARCHAR(64) Example: <i>Super Hauler 2</i>	Reference: CMM2009-06, annex 1, para 3. Validation: Must be the vessel name which, in the WCPFC Record of Fishing Vessels, corresponds to the <i>rec_win</i> provided.
The fishing gear used to take the fish	<i>fishing_gear</i>	VARCHAR(16), Uppercase If more than one type of gear was used, then separate the list using dashes. Example: <i>LLS-LLD</i>	Reference: CMM2009-06, annex 1, para 4. Validation: Must be a valid fishing gear code as found in Appendix 1, or list of fishing gear codes separated by dashes.
The date on which the transshipment started	<i>trans_date</i>	VARCHAR(11) ISO8601 – Date only format. See Appendix 2. Example: <i>2016-11-25</i>	Reference: CMM2009-06, annex 1, para 9. Validation: Must be a date in the recent past.
The location at which the transshipment started	<i>trans_loc</i>	VARCHAR(8), Uppercase Example: <i>WCPFC-HS</i>	Reference: CMM2009-06, annex 1, para 9. Validation: Must be a valid location code as found in Appendix 3.

The latitude at which the transshipment started	<i>trans_latitude</i>	CHAR(5) ISO6709, to the nearest 0.1 degree ±DD.D Example for Pohnpei Airport: +07.0	Reference: CMM2009-06, annex 1, para 9. Validation: Must be a valid latitude.
The longitude at which the transshipment started	<i>trans_longitude</i>	CHAR(6) ISO6709, to the nearest 0.1 degree ±DDD.D Example for Pohnpei Airport: +158.2	Reference: CMM2009-06, annex 1, para 9. Validation: (1) Must be a valid longitude and (2) Should, when considered along with the <i>trans_latitude</i> , represent a location that is at sea and within the <i>trans_loc</i> .
The name of the WCPFC observer	<i>obs_name</i>	VARCHAR(64)	Reference: CMM2009-06, annex 1, para 10. Validation: Must not be blank. Use “No Observer” where no observer was present.
Whether this is a new transshipment declaration, or an amendment to a previous transshipment declaration	<i>trans_id</i>	CHAR(16) Example: <i>New-Transshipment</i>	<b>NEW</b> - Rationale: Needed to allow already submitted transshipment declarations to be amended. Validation: In the case of new transshipment declarations, must be “New-Transshipment”. In the case of amendments to a previous transshipment declaration, must be the Transshipment ID that the WCPFC sent to the contact email address when confirming receipt of the declaration.
The date and time that the declaration was submitted	<i>submit_time</i>	VARCHAR(17) ISO 8601 – Date and time without seconds. See Appendix 2. Example:2016-11-25T14:46	<b>NEW</b> - Rationale: Needed (along with the <i>off_win</i> field) to allow <i>td_offloading_vessel</i> records and <i>td_ov_product</i> records to be correctly linked. Validation: Must be a recent earlier date/time. Note: Could be automatically generated by the submitters computer system at the moment that the declaration was sent.
The number of transhipped product records that are being submitted	<i>product_count</i>	INTEGER Example: 25 Must be 0 if no product was transhipped.	<b>NEW</b> - Rationale: Needed to ensure that product transhipped records have not been lost or duplicated in transmission. Note: Could be automatically generated by the submitters computer system at the moment that the declaration was sent.
A contact email address	<i>contact_email</i>	VARCHAR(50) Example: <i>a.fisher@gmail.com</i>	<b>NEW</b> - Rationale: An email address that WCPFC should use to (1) confirm receipt of this declaration and (2) contact if there are any problems with the quality / completeness of this declaration. Validation: Must be a valid email address.

RECORD NAME: <i>td_ov_product</i>			
All of the fields listed below are required in each record. No field may contain missing or null values.			
Information Required	Field Name	Field Format	Notes
The Offloading Vessel's WCPFC Identification Number (WIN)	<i>off_win</i>	VARCHAR(16) Example: <i>ABC1234</i>	<b>DUPLICATE</b> - Rationale: Needed (along with the <i>submit_time</i> field) to allow <i>td_offloading_vessel</i> records and <i>td_ov_product</i> records to be correctly linked.  Validation: Must have a matching entry in the <i>td_offloading_vessel</i> record.
The date and time that the declaration was submitted	<i>submit_time</i>	VARCHAR(17) ISO 8601 – Date and time without seconds. See Appendix 2. Example: <i>2016-11-25T14:46</i>	<b>NEW &amp; DUPLICATE</b> - Rationale: Needed (along with the <i>off_win</i> field) to allow <i>td_offloading_vessel</i> records and <i>td_ov_product</i> records to be correctly linked.  Validation: Must have a matching entry in the <i>td_offloading_vessel</i> record.
The species that was transhipped	<i>species</i>	CHAR(3), Uppercase The three-letter FAO species code for the species. Example: <i>SKJ</i>	Reference: CMM2009-06, annex 1, para 5. Validation: Must be a valid three-letter FAO species code - <a href="http://www.fao.org/fishery/collection/asfis/en">www.fao.org/fishery/collection/asfis/en</a>
The processed state of the transhipped fish	<i>processed_state</i>	CHAR(2), Uppercase Example: <i>WH</i>	Reference: CMM2009-06, annex 1, para 5. Validation: Must be a valid processed state code as found in Appendix 4.
Whether the transhipped fish was fresh or frozen	<i>fresh_frozen</i>	VARCHAR(6), containing the string "Fresh" or "Frozen"	Reference: CMM2009-06, annex 1, para 6.
The geographic location of the catch	<i>catch_loc</i>	VARCHAR(8), Uppercase Example: <i>WCPFC-HS</i>	Reference: CMM2009-06, annex 1, para 8. Validation: Must be a valid location code as found in Appendix 3.
The quantity of the product that was transhipped	<i>quantity_product</i>	FLOAT Example: <i>3.92</i>	Reference: CMM2009-06, annex 1, para 5.  The weight of product transhipped, measured in metric tonnes.

### 3.c Standards for cancelling a previously submitted e-report

<i>td_ov_cancel</i>

It will be possible to use e-reporting to cancel a previously submitted Offloading Vessel Transshipment Declaration. For each Offloading Vessel Transshipment Declaration cancellation, there must be one *td\_ov\_cancel* record.

<b>RECORD NAME:</b> <i>td_ov_cancel</i> All of the fields listed below are required in each record. No field may contain missing or null values.			
Information Required	Field Name	Field Format	Notes
The Offloading Vessel's WCPFC Identification Number (WIN)	<i>off_win</i>	VARCHAR(16) Example: <i>ABC1234</i>	Reference: CMM2009-06, annex 1, para 2. Validation: Must be a valid WIN, on the date of transshipment, in the WCPFC Record of Fishing Vessels.
The WCPFC Transshipment ID for the Offloading Vessel Transshipment Declaration that is being cancelled	<i>trans_id</i>	CHAR(16) Example: <i>HPOU6685WDXZ2309</i>	Rationale: Needed to allow already submitted transshipment declarations to be amended. Validation: Must be a valid WCPFC Transshipment ID, for a transshipment declaration that had previously been made by the offloading vessel. Note: This ID will have been sent by the WCPFC to the contact email address when the Transshipment Declaration was first submitted.
A contact email address	<i>contact_email</i>	VARCHAR(50) Example: <i>a.fisher@gmail.com</i>	Rationale: An email address that WCPFC should use to (1) confirm receipt of this cancellation and (2) contact if there are any problems with the quality / completeness of this cancellation. Validation: Must be a valid email address.

### 3.d Notes

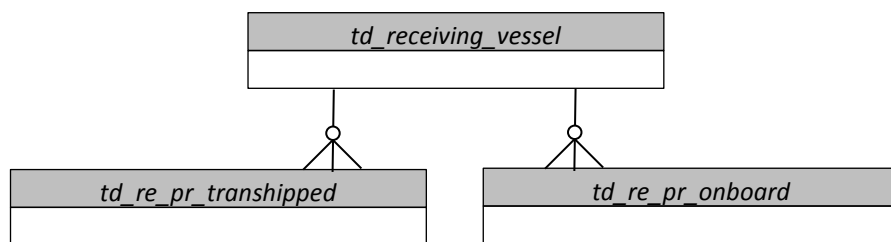
For the e-reporting of Transshipment Declarations by Offloading Vessels:

- the requirement for the offloading vessel to supply a “Unique Document Identifier” (CMM2009-06, annex 1, para 1) would be waived.
- the requirement for the offloading vessel to supply the signature of a WCPFC observer (CMM2009-06, annex 1, para 10) would be waived.
- the requirement for the offloading vessel to supply the quantity of product already on board the receiving vessel (CMM2009-06, annex 1, para 11) would be waived. The receiving vessel would still be required to supply this information.



## 4. RECEIVING VESSEL TRANSHIPMENT DECLARATIONS

### 4.a Standards for the structure of new or amended e-reports



For each Receiving Vessel Transshipment Declaration, there must be:

- one *td\_receiving\_vessel* record
- one *td\_re\_pr\_transhipped* record for each combination of Species / Processed State / Fresh or Frozen product that was transhipped. For example, the information shown below would be represented by four *td\_re\_pr\_transhipped* records.

Species	Processed State	Fresh or Frozen	Quantity
ALB	Gutted & Headed	Fresh	1.25t
ALB	Gilled, Gutted & Tailed	Fresh	0.525t
ALB	Gilled, Gutted & Tailed	Frozen	6.004t
BET	Gilled, Gutted & Tailed	Frozen	3.678t

- one *td\_re\_pr\_onboard* record for each combination of Species / RFMO Of Origin product that was on-board the receiving vessel before the transshipment started. For example, the information shown below would be represented by three *td\_re\_pr\_onboard* records.

Species	RFMO	Quantity
ALB	WCPFC	11.201t
ALB	IOTC	3.02t
BET	IOTC	3.678t

Note on interpreting the CMM - CMM2009-06, annex 1, para 11 requires receiving vessels to report “the quantity of product already on board the receiving vessel”, but is silent on whether the processed state of this product is required. This is open to two interpretations (1) the earlier definition of “product” contained in CMM2009-06, annex 1, para 5 applies or (2) no information on product state is required. In drafting this standard the second interpretation has been used, but this should be clarified before the standard is finalised.

Any Receiving Vessel Transshipment Declaration must be able to be uniquely identified by concatenating:

- the vessel’s WCPFC WIN number; and
- the date and time that the declaration was submitted.

The *td\_re\_pr\_transhipped* and *td\_re\_pr\_onboard* records for a single transshipment, must be able to be logically linked to the *td\_receiving\_vessel* record for the same transshipment, using the concatenated receiving vessel’s WIN number and declaration datetime.

## 4.b Standards for the records and fields to be provided

RECORD NAME: <i>td_receiving_vessel</i>			
All of the fields listed below are required in each record. No field may contain missing or null values.			
Information Required	Field Name	Field Format	Notes
The Offloading Vessel's WCPFC Identification Number (WIN)	<i>off_win</i>	VARCHAR(16) Example: <i>ABC1234</i>	Reference: CMM2009-06, annex 1, para 2. Validation: Must be a valid WIN, on the date of transshipment, in the WCPFC Record of Fishing Vessels.
The Offloading Vessel's Name	<i>off_vessel</i>	VARCHAR(64) Example: <i>Lucky Fisher III</i>	Reference: CMM2009-06, annex 1, para 2. Validation: Must be the vessel name which, in the WCPFC Record of Fishing Vessels, corresponds to the <i>off_win</i> provided.
The Receiving Vessel's WCPFC Identification Number (WIN)	<i>rec_win</i>	VARCHAR(16) Example: <i>DEF5678</i>	Reference: CMM2009-06, annex 1, para 3. Validation: Must be a valid WIN, on the date of transshipment, in the WCPFC Record of Fishing Vessels.
The Receiving Vessel's name	<i>rec_vessel</i>	VARCHAR(64) Example: <i>Super Hauler 2</i>	Reference: CMM2009-06, annex 1, para 3. Validation: Must be the vessel name which, in the WCPFC Record of Fishing Vessels, corresponds to the <i>rec_win</i> provided.
The date on which the transshipment started	<i>trans_date</i>	VARCHAR(11) ISO8601 – Date only format. See Appendix 2. Example: <i>2016-11-25</i>	Reference: CMM2009-06, annex 1, para 9. Validation: Must be a date in the recent past.
The location at which the transshipment started	<i>trans_loc</i>	VARCHAR(8), Uppercase Example: <i>WCPFC-HS</i>	Reference: CMM2009-06, annex 1, para 9. Validation: Must be a valid location code as found in Appendix 3.
The latitude at which the transshipment started	<i>trans_latitude</i>	CHAR(5) ISO6709, to the nearest 0.1 degree ±DD.D Example for Pohnpei Airport: <i>+07.0</i>	Reference: CMM2009-06, annex 1, para 9. Validation: Must be a valid latitude.

The longitude at which the transshipment started	<i>trans_longitude</i>	CHAR(6) ISO6709, to the nearest 0.1 degree ±DDD.D Example for Pohnpei Airport: +158.2	Reference: CMM2009-06, annex 1, para 9. Validation: (1) Must be a valid longitude and (2) Should, when considered along with the <i>trans_latitude</i> , represent a location that is at sea and within the <i>trans_loc</i> .
The name of the WCPFC observer	<i>obs_name</i>	VARCHAR(64)	Reference: CMM2009-06, annex 1, para 10. Validation: Must not be blank. Use “No Observer” where no observer was present.
Whether this is a new transshipment declaration, or an amendment to a previous transshipment declaration	<i>trans_id</i>	CHAR(16) Example: <i>New-Transshipment</i>	<b>NEW</b> - Rationale: Needed to allow already submitted transshipment declarations to be amended. Validation: In the case of new transshipment declarations, must be “New-Transshipment”. In the case of amendments to a previous transshipment declaration, must be the Transshipment ID that the WCPFC sent to the contact email address when confirming receipt of the declaration.
The date and time that the declaration was submitted	<i>submit_time</i>	VARCHAR(17) ISO 8601 – Date and time without seconds. See Appendix 2. Example: <i>2016-11-25T14:46</i>	<b>NEW</b> - Rationale: Needed (along with the <i>off_winfield</i> ) to allow <i>td_receiving_vessel</i> , <i>td_re_pr_transhipped</i> and <i>td_re_pr_onboard</i> records to be correctly linked. Validation: Must be a recent earlier date/time. Note: Could be automatically generated by the submitters computer system at the moment that the declaration was sent.
The number of transhipped product records that are being submitted	<i>product_count</i>	INTEGER Example: 25 Must be 0 if no product was transhipped.	<b>NEW</b> - Rationale: Needed to ensure that product transhipped records have not been lost or duplicated in transmission. Note: Could be automatically generated by the submitters computer system at the moment that the declaration was sent.
The number of product already on-board records that are being submitted	<i>onboard_count</i>	INTEGER Example: 49 Must be 0 if no product was on-board before the transshipment started.	<b>NEW</b> - Rationale: Needed to ensure that product already on-board records have not been lost or duplicated in transmission. Note: Could be automatically generated by the submitters computer system at the moment that the declaration was sent.
A contact email address	<i>contact_email</i>	VARCHAR(50) Example: <i>a.carrier@gmail.com</i>	<b>NEW</b> - Rationale: An email address that WCPFC should use to (1) confirm receipt of this declaration and (2) contact if there are any problems with the quality / completeness of this declaration. Validation: Must be a valid email address.

**RECORD NAME: *td\_re\_pr\_transhipped***

All of the fields listed below are required in each record. No field may be missing or null.

Information Required	Field Name	Field Format	Notes
The Receiving Vessel's WCPFC Identification Number (WIN)	<i>rec_win</i>	VARCHAR(16) Example: <i>DEF5678</i>	Reference: CMM2009-06, annex 1, para 3. Validation: Must be a valid WIN, on the date of transshipment, in the WCPFC Record of Fishing Vessels.
The date and time that the declaration was submitted	<i>submit_time</i>	VARCHAR(17) ISO 8601 – Date and time without seconds. See Appendix 2. Example: <i>2016-11-25T14:46</i>	<b>NEW &amp; DUPLICATE</b> - Rationale: Needed (along with the <i>rec_win</i> field) to allow <i>td_receiving_vessel</i> records and <i>td_re_pr_transhipped</i> records to be correctly linked. Validation: Must have a matching entry in the <i>td_receiving_vessel</i> record.
The species that was transhipped	<i>species</i>	CHAR(3), Uppercase The three-letter FAO species code for the species. Example: <i>SKJ</i>	Reference: CMM2009-06, annex 1, para 5. Validation: Must be a valid three-letter FAO species code - <a href="http://www.fao.org/fishery/collection/asfis/en">www.fao.org/fishery/collection/asfis/en</a>
The processed state of the transhipped fish	<i>processed_state</i>	CHAR(2), Uppercase Example: <i>WH</i>	Reference: CMM2009-06, annex 1, para 5. Validation: Must be a valid processed state code as found in Appendix 4.
Whether the transhipped fish was fresh or frozen	<i>fresh_frozen</i>	VARCHAR(6), containing the string "Fresh" or "Frozen"	Reference: CMM2009-06, annex 1, para 6.
The quantity of the product that was transhipped	<i>quantity_product</i>	FLOAT Example: <i>3.92</i>	Reference: CMM2009-06, annex 1, para 5. The weight of product transhipped, measured in metric tonnes.

**RECORD NAME:** *td\_re\_pr\_onboard*

All of the fields listed below are required in each record. No field may be missing or null.

Information Required	Field Name	Field Format	Notes
The Receiving Vessel's WCPFC Identification Number (WIN)	<i>rec_win</i>	VARCHAR(16) Example: <i>DEF5678</i>	Reference: CMM2009-06, annex 1, para 3. Validation: Must be a valid WIN, on the date of transshipment, in the WCPFC Record of Fishing Vessels.
The date and time that the declaration was submitted	<i>submit_time</i>	VARCHAR(17) ISO 8601 – Date and time without seconds. See Appendix 2. Example: <i>2016-11-25T14:46</i>	<b>NEW &amp; DUPLICATE</b> - Rationale: Needed (along with the <i>rec_win</i> field) to allow <i>td_receiving_vessel</i> records and <i>td_ov_product</i> records to be correctly linked. Validation: Must have a matching entry in the <i>td_receiving_vessel</i> record.
The species of the product that was on-board before the transshipment started	<i>species</i>	CHAR(3), Uppercase The three-letter FAO species code for the species. Example: <i>SKJ</i>	Reference: CMM2009-06, annex 1, para 11. Validation: Must be a valid three-letter FAO species code - <a href="http://www.fao.org/fishery/collection/asfis/en">www.fao.org/fishery/collection/asfis/en</a>
The geographic origin (RFMO) of the product that was onboard before the transshipment started	<i>origin_loc</i>	VARCHAR(5), Uppercase Example: <i>WCPFC</i>	Reference: CMM2009-06, annex 1, para 11. Validation: Must be a valid RFMO Area code as found in Appendix 5.
The quantity of the product that was on-board before the transshipment started	<i>quantity_product</i>	FLOAT Example: <i>3.92</i>	Reference: CMM2009-06, annex 1, para 11. The weight of product on-board, measured in metric tonnes.

## 4.c Standards for cancelling a previously submitted e-report

<i>td_re_cancel</i>

It will be possible to use e-reporting to cancel a previously submitted Receiving Vessel Transshipment Declaration. For each Receiving Vessel Transshipment Declaration cancellation, there must be one *td\_re\_cancel* record.

RECORD NAME: <i>td_re_cancel</i>			
All of the fields listed below are required in each record. No field may contain missing or null values.			
Information Required	Field Name	Field Format	Notes
The Receiving Vessel's WCPFC Identification Number (WIN)	<i>rec_win</i>	VARCHAR(16) Example: <i>DEF5678</i>	Reference: CMM2009-06, annex 1, para 3. Validation: Must be a valid WIN, on the date of transshipment, in the WCPFC Record of Fishing Vessels.
The WCPFC Transshipment ID for the Receiving Vessel Transshipment Declaration that is being cancelled	<i>trans_id</i>	CHAR(16) Example: <i>FGYH7892ELPU3087</i>	Rationale: Needed to allow already submitted transshipment declarations to be amended. Validation: Must be a valid WCPFC Transshipment ID, for a transshipment declaration that had previously been made by the receiving vessel. Note: Will have been sent by the WCPFC to the contact email address when the Transshipment Declaration was first submitted.
A contact email address	<i>contact_email</i>	VARCHAR(50) Example: <i>a.carrier@gmail.com</i>	Rationale: An email address that WCPFC should use to (1) confirm receipt of this cancellation and (2) contact if there are any problems with the quality / completeness of this cancellation. Validation: Must be a valid email address.

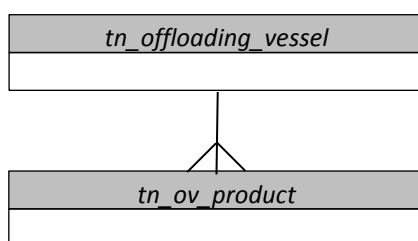
## 4.d Notes

For the e-reporting of Transshipment Declarations by Receiving Vessels:

1. the requirement for the receiving vessel to supply a "Unique Document Identifier" (CMM2009-06, annex 1, para 1) would be waived.
2. the requirement for the receiving vessel to supply the signature of a WCPFC observer (CMM2009-06, annex 1, para 10) would be waived.
3. the requirement for the receiving vessel to supply the fishing gear used to take the fish (CMM2009-06, annex 1, para 4) would be waived. The offloading vessel would still be required to supply this information.

## 5. OFFLOADING VESSEL TRANSHIPMENT NOTICES

### 5.a Standards for the structure of new or amended e-reports



For each Offloading Vessel Transshipment Notice, there must be:

- one *tn\_offloading\_vessel* record
- one *tn\_ov\_product* record for each combination of Species / Processed State / Fresh or Frozen / Location of Catch product that will be transhipped. For example, the information shown below would be represented by four *tn\_ov\_product* records.

Species	Processed State	Location of Catch	Quantity
<i>ALB</i>	<i>Gutted &amp; Headed</i>	<i>Cook Islands EEZ</i>	<i>1.25t</i>
<i>ALB</i>	<i>Gilled, Gutted &amp; Tailed</i>	<i>Cook Islands EEZ</i>	<i>4.829t</i>
<i>ALB</i>	<i>Gilled, Gutted &amp; Tailed</i>	<i>WCPFC High Seas</i>	<i>1.175t</i>
<i>BET</i>	<i>Gilled, Gutted &amp; Tailed</i>	<i>WCPFC High Seas</i>	<i>3.678t</i>

Any Offloading Vessel Transshipment Notice must be able to be uniquely identified by concatenating:

- the vessel's WCPFC WIN number; and
- the date and time that the notice was submitted.

The *tn\_ov\_product* records for a single transshipment must be able to be logically linked to the *tn\_offloading\_vessel* record for the same transshipment, using the concatenated offloading vessel's WIN number and date / time that the notice was submitted.

## 5.b Standards for the records and fields to be provided

RECORD NAME: <i>tn_offloading_vessel</i>			
All of the fields listed below are required in each record. No field may contain missing or null values.			
Information Required	Field Name	Field Format	Notes
The Offloading Vessel's WCPFC Identification Number (WIN)	<i>off_win</i>	VARCHAR(16) Example: <i>ABC1234</i>	Reference: CMM2009-06, annex 3, para 1. Validation: Must be a valid WIN, on the date of transshipment, in the WCPFC Record of Fishing Vessels.
The Offloading Vessel's Name	<i>off_vessel</i>	VARCHAR(64) Example: <i>Lucky Fisher III</i>	Reference: CMM2009-06, annex 3, para 1. Validation: Must be the vessel name which, in the WCPFC Record of Fishing Vessels, corresponds to the <i>off_win</i> provided.
The Receiving Vessel's WCPFC Identification Number (WIN)	<i>rec_win</i>	VARCHAR(16) Example: <i>DEF5678</i>	Reference: CMM2009-06, annex 3, para 2. Validation: Must be a valid WIN, on the date of transshipment, in the WCPFC Record of Fishing Vessels.
The Receiving Vessel's name	<i>rec_vessel</i>	VARCHAR(64) Example: <i>Super Hauler 2</i>	Reference: CMM2009-06, annex 3, para 2. Validation: Must be the vessel name which, in the WCPFC Record of Fishing Vessels, corresponds to the <i>rec_win</i> provided.
The date on which the transshipment is proposed to start	<i>prop_date</i>	VARCHAR(11) ISO8601 – Date only format. See Appendix 2. Example: <i>2016-11-25</i>	Reference: CMM2009-06, annex 3, para 5. Validation: Must be a date in the near future.
The location at which the transshipment is proposed to start	<i>prop_loc</i>	VARCHAR(8), Uppercase Example: <i>WCPFC-HS</i>	Reference: CMM2009-06, annex 3, para 5. Validation: Must be a valid location code as found in Appendix 3.
The latitude at which the transshipment is proposed to start	<i>prop_latitude</i>	CHAR(5) ISO6709, to the nearest 0.1 degree ±DD.D Example for Pohnpei Airport: <i>+07.0</i>	Reference: CMM2009-06, annex 3, para 5. Validation: Must be a valid latitude.



The longitude at which the transshipment is proposed to start	<i>prop_longitude</i>	CHAR(6) ISO6709, to the nearest 0.1 degree ±DDD.D Example for Pohnpei Airport: +158.2	Reference: CMM2009-06, annex 3, para 5. Validation: (1) Must be a valid longitude and (2) should, when considered along with the <i>prop_latitude</i> , represent a location that is at sea and within the <i>prop_loc</i> .
Whether this is a new transshipment notice, or an amendment to a previous transshipment declaration	<i>trans_id</i>	CHAR(16) Example: <i>New-Transshipment</i>	<b>NEW</b> - Rationale: Needed to allow already submitted transshipment declarations to be amended. Validation: In the case of new transshipment notices, must be "New-Transshipment". In the case of amendments to a previous transshipment notice, must be the Transshipment ID that the WCPFC sent to the contact email address when confirming receipt of the transshipment notice.
The date and time that the notice was submitted	<i>submit_time</i>	VARCHAR(17) ISO 8601 – Date and time without seconds. See Appendix 2. Example: <i>2016-11-25T14:46</i>	<b>NEW</b> - Rationale: Needed (along with the <i>off_winfield</i> ) to allow <i>tn_offloading_vessel</i> records and <i>tn_ov_product</i> records to be correctly linked. Validation: Must be a recent earlier date/time. Note: Could be automatically generated by the submitters computer system at the moment that the declaration was sent.
The number of transhipped product records that are being submitted	<i>product_count</i>	INTEGER Example: 25	<b>NEW</b> - Rationale: Needed to ensure that product to be transhipped records have not been lost or duplicated in transmission. Note: Could be automatically generated by the submitters computer system at the moment that the declaration was sent.
A contact email address	<i>contact_email</i>	VARCHAR(50) Example: <i>a.fisher@gmail.com</i>	<b>NEW</b> - Rationale: An email address that WCPFC should use to (1) confirm receipt of this notice and (2) contact if there are any problems with the quality / completeness of this notice. Validation: Must be a valid email address.

**RECORD NAME:** *tn\_ov\_product*

All of the fields listed below are required in each record. No field may contain missing or null values.

Information Required	Field Name	Field Format	Notes
The Offloading Vessel's WCPFC Identification Number (WIN)	<i>off_win</i>	VARCHAR(16) Example: <i>ABC1234</i>	Reference: CMM2009-06, annex 3, para 1. Validation: Must be a valid WIN, on the date of transshipment, in the WCPFC Record of Fishing Vessels.
The date and time that the notice was submitted	<i>submit_time</i>	VARCHAR(17) ISO 8601 – Date and time without seconds. See Appendix 2. Example: <i>2016-11-25T14:46</i>	<b>NEW &amp; DUPLICATE</b> - Rationale: Needed (along with the <i>off_win</i> field) to allow <i>td_offloading_vessel</i> records and <i>tn_ov_product</i> records to be correctly linked. Validation: Must have a matching entry in the <i>td_offloading_vessel</i> record.
The species of the product that will be transhipped	<i>species</i>	CHAR(3), Uppercase The three-letter FAO species code for the species. Example: <i>SKJ</i>	Reference: CMM2009-06, annex 3, para 3. Validation: Must be a valid three-letter FAO species code - <a href="http://www.fao.org/fishery/collection/asfis/en">www.fao.org/fishery/collection/asfis/en</a>
The processed state for the product that will be transhipped	<i>processed_state</i>	CHAR(2), Uppercase Example: <i>WH</i>	Reference: CMM2009-06, annex 3, para 3. Validation: Must be a valid processed state code as found in Appendix 4.
The geographic location of the catch	<i>catch_loc</i>	VARCHAR(8), Uppercase Example: <i>WCPFC-HS</i>	Reference: CMM2009-06, annex 3, para 6. Validation: Must be a valid location code as found in Appendix 3.
The quantity of the product that will be transhipped	<i>quantity_product</i>	FLOAT Example: <i>3.92</i>	Reference: CMM2009-06, annex 3, para 4. The weight of product to be transhipped, measured in metric tonnes.

## 5.c Standards for cancelling a previous e-report

<i>tn_ov_cancel</i>

It will be possible to use e-reporting to cancel a previously submitted Offloading Vessel Transhipment Notice. For each Offloading Vessel Transhipment Notice cancellation, there must be one *tn\_ov\_cancel* record.

<b>RECORD NAME:</b> <i>tn_ov_cancel</i> All of the fields listed below are required in each record. No field may contain missing or null values.			
Information Required	Field Name	Field Format	Notes
The Offloading Vessel's WCPFC Identification Number (WIN)	<i>off_win</i>	VARCHAR(16) Example: <i>ABC1234</i>	Reference: CMM2009-06, annex 3, para 1. Validation: Must be a valid WIN, on the date of transhipment, in the WCPFC Record of Fishing Vessels.
The WCPFC Transhipment ID for the Offloading Vessel Transhipment Notice that is being cancelled	<i>trans_id</i>	CHAR(16) Example: <i>FGYH7892ELPU3087</i>	Rationale: Needed to allow already submitted transhipment notices to be amended. Validation: Must be a valid WCPFC Transhipment ID, for a transhipment notice that had previously been made by the offloading vessel. Note: Will have been sent by the WCPFC to the contact email address when the Transhipment Notice was first submitted.
A contact email address	<i>contact_email</i>	VARCHAR(50) Example: <i>a.fisher@gmail.com</i>	Rationale: An email address that WCPFC should use to (1) confirm receipt of this cancellation and (2) contact if there are any problems with the quality / completeness of this cancellation. Validation: Must be a valid email address.

## 6. RECEIVING VESSEL TRANSHIPMENT NOTICES

### 6.a Standards for the structure of new or amended e-reports

<i>tn_receiving_vessel</i>

For each Receiving Vessel Transhipment Notice, there must be one *tn\_receiving\_vessel* record.

Any Receiving Vessel Transhipment Notice must be able to be uniquely identified by concatenating:

- the vessel's WCPFC WIN number; and
- the date and time that the notice was submitted.

### 6.b Standards for the records and fields to be provided

RECORD NAME: <i>tn_receiving_vessel</i>			
All of the fields listed below are required in each record. No field may contain missing or null values.			
Information Required	Field Name	Field Format	Notes
The Offloading Vessel's WCPFC Identification Number (WIN)	<i>off_win</i>	VARCHAR(16) Example: <i>ABC1234</i>	Reference: CMM2009-06, annex 3, para 1. Validation: Must be a valid WIN, on the date of transhipment, in the WCPFC Record of Fishing Vessels.
The Offloading Vessel's Name	<i>off_vessel</i>	VARCHAR(64) Example: <i>Lucky Fisher III</i>	Reference: CMM2009-06, annex 3, para 1. Validation: Must be the vessel name which, in the WCPFC Record of Fishing Vessels, corresponds to the <i>off_win</i> provided.
The Receiving Vessel's WCPFC Identification Number (WIN)	<i>rec_win</i>	VARCHAR(16) Example: <i>DEF5678</i>	Reference: CMM2009-06, annex 3, para 2. Validation: Must be a valid WIN, on the date of transhipment, in the WCPFC Record of Fishing Vessels.
The Receiving Vessel's name	<i>rec_vessel</i>	VARCHAR(64) Example: <i>Super Hauler 2</i>	Reference: CMM2009-06, annex 3, para 2. Validation: Must be the vessel name which, in the WCPFC Record of Fishing Vessels, corresponds to the <i>rec_win</i> provided.
The date on which the transhipment is proposed to start	<i>prop_date</i>	VARCHAR(11) ISO8601 – Date only format. See Appendix 2. Example: <i>2016-11-25</i>	Reference: CMM2009-06, annex 3, para 5. Validation: Must be a date in the near future.

The location at which the transshipment is proposed to start	<i>prop_loc</i>	VARCHAR(8), Uppercase Example: <i>WCPFC-HS</i>	Reference: CMM2009-06, annex 3, para 5. Validation: Must be a valid location code as found in Appendix 3.
The latitude at which the transshipment is proposed to start	<i>prop_latitude</i>	CHAR(5) ISO6709, to the nearest 0.1 degree $\pm$ DD.D Example for Pohnpei Airport: <i>+07.0</i>	Reference: CMM2009-06, annex 3, para 5. Validation: Must be a valid latitude.
The longitude at which the transshipment is proposed to start	<i>prop_longitude</i>	CHAR(6) ISO6709, to the nearest 0.1 degree $\pm$ DDD.D Example for Pohnpei Airport: <i>+158.2</i>	Reference: CMM2009-06, annex 3, para 5. Validation: (1) Must be a valid longitude and (2) Should, when considered along with the <i>prop_latitude</i> , represent a location that is at sea and within the <i>prop_loc</i> .
Whether this is a new transshipment notice, or an amendment to a previous transshipment notice	<i>trans_id</i>	CHAR(16) Example: <i>New-Transshipment</i>	<b>NEW</b> - Rationale: Needed to allow already submitted transshipment notices to be amended. Validation: In the case of new transshipment notices, must be "New-Transshipment". In the case of amendments to a previous transshipment notice, must be the Transshipment ID that the WCPFC sent to the contact email address when confirming receipt of the notice.
The date and time that the notice was submitted	<i>submit_time</i>	VARCHAR(17) ISO 8601 – Date and time without seconds. See Appendix 2. Example: <i>2016-11-25T14:46</i>	<b>NEW</b> - Rationale: Needed to ensure consistency with the standards documented in sections 3.b, 4.b, and 5.b. Validation: Must be a recent earlier date/time. Note: Could be automatically generated by the submitters computer system at the moment that the declaration was sent.
A contact email address	<i>contact_email</i>	VARCHAR(50) Example: <i>a.carrier@gmail.com</i>	<b>NEW</b> - Rationale: An email address that WCPFC should use to (1) confirm receipt of this notice and (2) contact if there are any problems with the quality / completeness of this notice. Validation: Must be a valid email address.

## 6.c Standards for cancelling a previous e-report

<i>tn_re_cancel</i>

It will be possible to use e-reporting to cancel a previously submitted Receiving Vessel Transhipment Notice. For each Receiving Vessel Transhipment Notice cancellation, there must be one *tn\_re\_cancel* record.

<b>RECORD NAME:</b> <i>tn_re_cancel</i> All of the fields listed below are required in each record. No field may contain missing or null values.			
Information Required	Field Name	Field Format	Notes
The Receiving Vessel's WCPFC Identification Number (WIN)	<i>rec_win</i>	VARCHAR(16) Example: <i>DEF5678</i>	Reference: CMM2009-06, annex 3, para 2. Validation: Must be a valid WIN, on the date of transhipment, in the WCPFC Record of Fishing Vessels.
The WCPFC Transhipment ID for the Receiving Vessel Transhipment Notice that is being cancelled	<i>trans_id</i>	CHAR(16) Example: <i>FGYH7892ELPU3087</i>	Rationale: Needed to allow already submitted transhipment notices to be amended. Validation: Must be a valid WCPFC Transhipment ID, for a transhipment notice that had previously been made by the receiving vessel. Note: Will have been sent by the WCPFC to the contact email address when the Transhipment Notice was first submitted.
A contact email address	<i>contact_email</i>	VARCHAR(50) Example: <i>a.carrier@gmail.com</i>	Rationale: An email address that WCPFC should use to (1) confirm receipt of this cancellation and (2) contact if there are any problems with the quality / completeness of this cancellation. Validation: Must be a valid email address.

## 6.d Notes

For the e-reporting of Transhipment Notices by receiving vessels:

- the requirement for the receiving vessel to supply information on the product to be transhipped (CMM2009-06, annex 3, para 3) would be waived. The offloading vessel would still be required to supply this information.

## 7. STANDARDS FOR THE TRANSMISSION OF TRANSHIPMENT E-REPORTS

XML and JSON are the preferred formats for data transmission. During a transitional period, the WCPFC will also support XLSX. Vessels, agents or CCMs wishing to e-report Transshipment Declarations and Transshipment Notices can choose which of these three formats they use.

Transmission Format Chosen	Standards
XML	<ol style="list-style-type: none"> <li>1. There must be one XML Document for each Transshipment Declaration or Transshipment Notice being sent.</li> <li>2. Within each XML Document, there must be one root element named "WCPFC_Transshipment".</li> <li>3. Nested within the root element, for each record being transmitted there must be one 1<sup>st</sup> level element. These 1<sup>st</sup> level elements must have the appropriate Record Name, as defined in sections 3, 4, 5 and 6.</li> <li>4. Nested within each 1<sup>st</sup> level element, for each field being transmitted there must be one 2<sup>nd</sup> level element. These 2<sup>nd</sup> level elements must have the appropriate Field Name, as defined in sections 3, 4, 5 and 6.</li> <li>5. Each 2<sup>nd</sup> level element must contain text appropriate to its Field Name, and fulfilling the standards documented in sections 3, 4, 5 and 6.</li> </ol>
JSON	<ol style="list-style-type: none"> <li>6. There must be one JSON File for each Transshipment Declaration or Transshipment Notice being sent.</li> <li>7. Within each JSON File, there must be one root object with the key "WCPFC_Transshipment".</li> <li>8. The value of WCPFC_Transshipment must be a series of 1<sup>st</sup> level objects, one for each record being transmitted.</li> <li>9. The keys for these 1<sup>st</sup> level objects must be the appropriate Record Names, as defined in sections 3, 4, 5 and 6.</li> <li>10. The values of these 1<sup>st</sup> level objects must be a series of 2<sup>nd</sup> level objects, one for each field being transmitted.</li> <li>11. The keys for these 2<sup>nd</sup> level objects must be the appropriate Field Names, as defined in sections 3, 4, 5 and 6.</li> <li>12. Each 2<sup>nd</sup> level object must contain a value appropriate to its Field Name, and fulfilling the standards documented in sections 3, 4, 5 and 6.</li> </ol>
XLSX	<ol style="list-style-type: none"> <li>13. There must be one XLSX file for each Transshipment Declaration or Transshipment Notice being sent.</li> <li>14. Within the XLSX file, there must be one worksheet for each type of record (as defined in sections 3, 4, 5 and 6.) being sent.</li> <li>15. The name of each worksheet must be the Record Name (as defined in sections 3, 4, 5 and 6).</li> <li>16. On each worksheet, the data must start in cell A1 and be contiguous.</li> <li>17. Row 1 of each worksheet must contain the Field Names as defined in sections 3, 4, 5 and 6; and each column must contain data appropriate to its column heading and fulfilling the standards documented in sections 3, 4, 5 and 6.</li> </ol>

## APPENDICES

### APPENDIX 1 – TRANSHIPMENT FISHING GEAR CODES

<b>Fishing Gear</b>	<b>Code</b>
With purse lines (purse seine)	PS
- one boat operated purse seines	PS1
- two boat operated purse seines	PS2
Without purse lines (lampara)	LA
Beach seines	SB
Boat or vessel seines	SV
- Danish seines	SDN
- Scottish seines	SSC
- Pair seines	SPR
Seine nets (not specified)	SX
Portable lift nets	LNP
Boat-operated lift nets	LNB
Shore-operated stationary lift nets	LNS
Lift nets (not specified)	LN
Set gillnets (anchored)	GNS
Driftnets	GND
Encircling gillnets	GNC
Fixed gillnets (on stakes)	GNF
Trammel nets	GTR
Combined gillnets-trammel nets	GTN
Gillnets and entangling nets (not specified)	GEN
Gillnets (not specified)	GN
Handlines and pole-lines (hand operated)	LHP



Handlines and pole-lines (mechanized)	LHM
Set longlines	LLS
Drifting longlines	LLD
Longlines (not specified)	LL
Trolling lines	LTL
Hooks and lines (not specified)	LX
Harpoons	HAR
Miscellaneous gear	MIS
Recreational fishing gear	RG

Notes:

- these are the same gear codes contained in Attachment 6 of CMM2014-03 (Standards, Specifications and Procedures for the Western and Central Pacific Fisheries Commission Record of Fishing Vessels).
- the Commission may update its Transshipment Fishing Gear Codes at any time. When this occurs, the most recent Transshipment Fishing Gear Codes that have been approved by the Commission must be used.

## APPENDIX 2 – DATE/TIME FORMAT

DATE and DATE/TIME fields must adhere to the ISO8601 standard formats listed in the table below.

For fields requiring	Use the format	Example
UTC date	[YYYY]-[MM]-[DD] Z	2016-06-23Z
LOCAL date	[YYYY]-[MM]-[DD]	2016-06-23
UTC date/time	[YYYY]-[MM]-[DD]T[HH]:[MM]Z	2016-06-23T14:35Z
LOCAL date/time	[YYYY]-[MM]-[DD]T[HH]:[MM]	2016-06-23T14:35

Note that this is the same standard for Date and Date/Time reporting adopted by the WCPC13 for the e-reporting of Operational Logsheet data.

## APPENDIX 3 – TRANSHIPMENT LOCATION CODES

Location	Code
Within the EEZ of American Samoa	EEZ-ASM
Within the EEZ of Australia	EEZ-AUS
Within the EEZ of Commonwealth of the Northern Mariana Islands	EEZ-MNP
Within the EEZ of Cook Islands	EEZ-COK
Within the EEZ of Federated States of Micronesia	EEZ-FSM
Within the EEZ of Fiji	EEZ-FJI
Within the EEZ of French Polynesia	EEZ-PYF
Within the EEZ of Guam	EEZ-GUM
Within the EEZ of Indonesia	EEZ-IDN
Within the EEZ of Japan	EEZ-JPN
Within the EEZ of Kiribati	EEZ-KIR
Within the EEZ of Nauru	EEZ-NRU
Within the EEZ of New Caledonia	EEZ-NCL
Within the EEZ of New Zealand	EEZ-NZL
Within the EEZ of Niue	EEZ-NIU
Within the EEZ of Palau	EEZ-PLW
Within the EEZ of Papua New Guinea	EEZ-PNG
Within the EEZ of Philippines	EEZ-PHL
Within the EEZ of Republic of Marshall Islands	EEZ-MHL
Within the EEZ of Samoa	EEZ-WSM
Within the EEZ of Solomon Islands	EEZ-SLB
Within the EEZ of Tokelau	EEZ-TKL
Within the EEZ of Tonga	EEZ-TON
Within the EEZ of Tuvalu	EEZ-TUV

Within the EEZ of United States of America	EEZ-USA
Within the EEZ of Vanuatu	EEZ-VUT
Within the EEZ of Wallis and Futuna	EEZ-WLF
Within the WCPFC Convention Area on the High Seas	WCPFC-HS
Within the WCPFC Convention Area, but not within an EEZ and not on the High Seas	WCPFC-OT
Within the IOTC Agreement Area	IOTC
Within the IATTC Convention Area	IATTC
Within the ICCAT Convention Area	ICCAT
Other, not listed above	OTHER

Note

- these are the same locations listed in the footnotes to CMM2009-06, Annex I and Annex III; although the codes have been developed for this standard.
- the Commission may update its Transshipment Location Codes at any time. When this occurs, the most recent Transshipment Location Codes that have been approved by the Commission must be used.

## APPENDIX 4 – TRANSHIPMENT PROCESSED STATE CODES

Processed State	Code
Whole	WH
Gutted and Headed	GH
Gutted, Headed and Tailed	GT
Gutted Only, not Gilled	GO
Gilled and Gutted	LG
Gilled, Gutted and Tailed	LT
Shark Fins	SF
Other, not listed above	OT

Note:

- these are the same product states listed in the footnotes to CMM2009-06, Annex I; although the codes have been developed for this standard.
- the Commission may update its Transshipment Processed State Codes at any time. When this occurs, the most recent Transshipment Processed State Codes that have been approved by the Commission must be used.

## APPENDIX 5 – TRANSHIPMENT RFMO AREA CODES

Location	Code
Within the WCPFC Convention Area	WCPFC
Within the IOTC Agreement Area	IOTC
Within the IATTC Convention Area	IATTC
Within the ICCAT Convention Area	ICCAT
Other, not listed above	OTHER

Note that the Commission may update its Transshipment RFMO Area Codes at any time. When this occurs, the most recent Transshipment RFMO Area Codes that have been approved by the Commission must be used.