



FFA

Trends in economic conditions in the southern longline fishery



FFA Economics conditions index

- Components of the economic conditions index:
 - Fish prices
 - Fishing costs (excl. license and access fee payments)
 - Catch rates
- These are combined to form the economic conditions index.
- Details are provided in SC₁₃-ST-WP-08 "Analysis and projections of economic conditions in the WCPO fisheries"



FFA

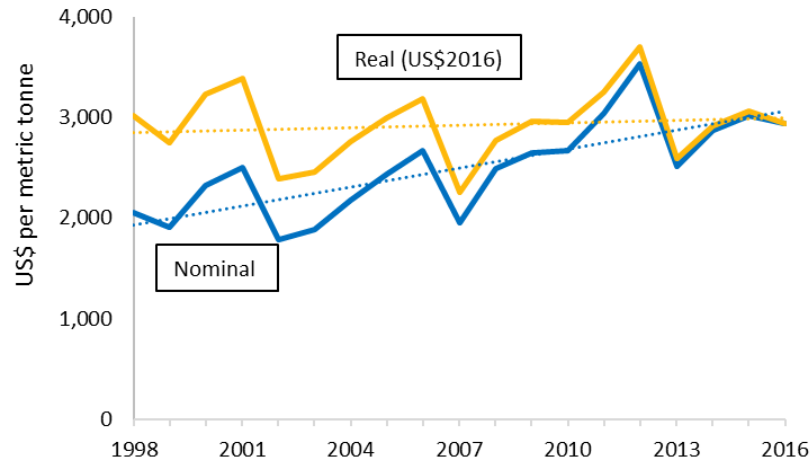
Interpreting indices

- Indices are interpreted against their average in the reference period (1998-2016 average = 100)
- Values less than 100 = below average (1998-2018) performance while values above 100 = better than average
- The economic conditions index illustrates the relative prevailing environment with regards to the generation of economic returns in the fishery. It does not address the absolute level of returns generated or how they are distributed.

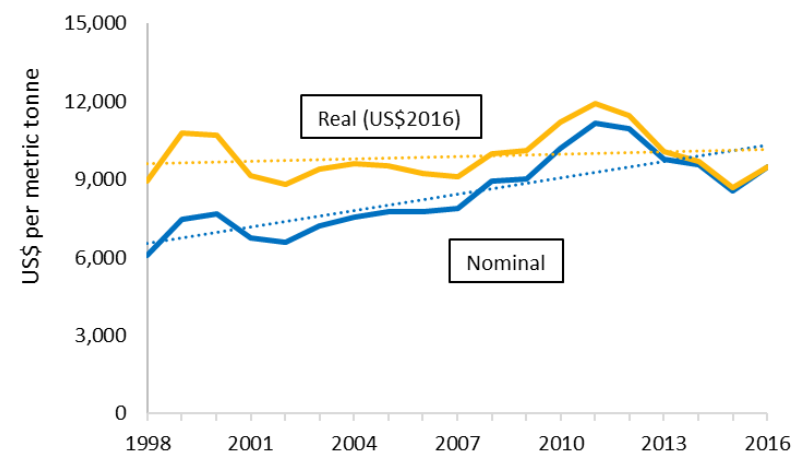


FFA

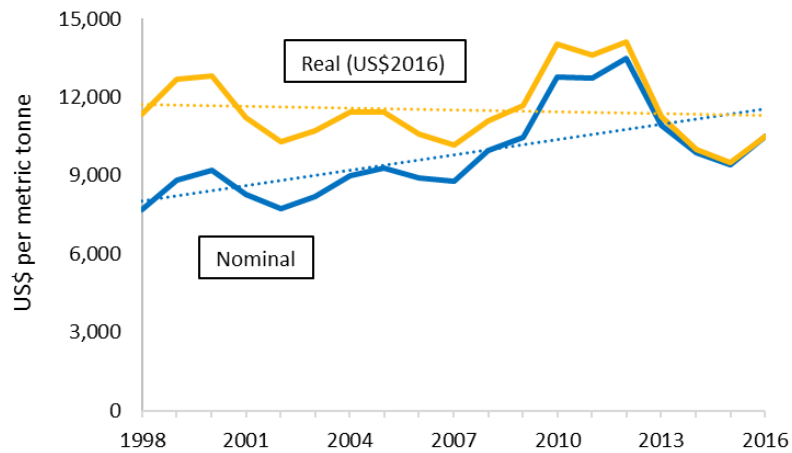
Prices



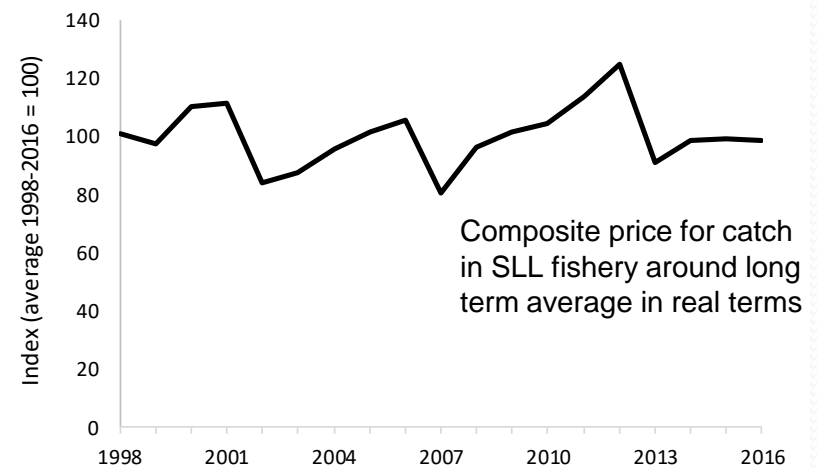
USD nominal and real prices for imports of albacore into Thailand



USD nominal and real prices for imports for Japanese yellowfin imports from Oceania



USD nominal and real prices for Japanese bigeye imports from Oceania

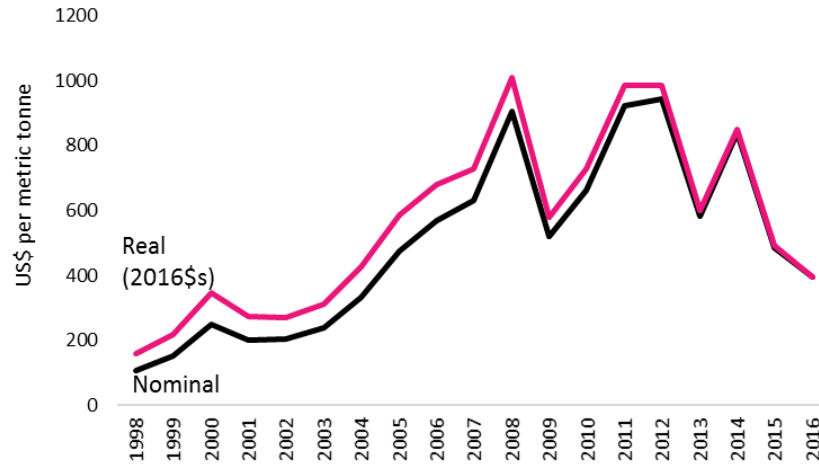


Composite price index for the southern longline fishery

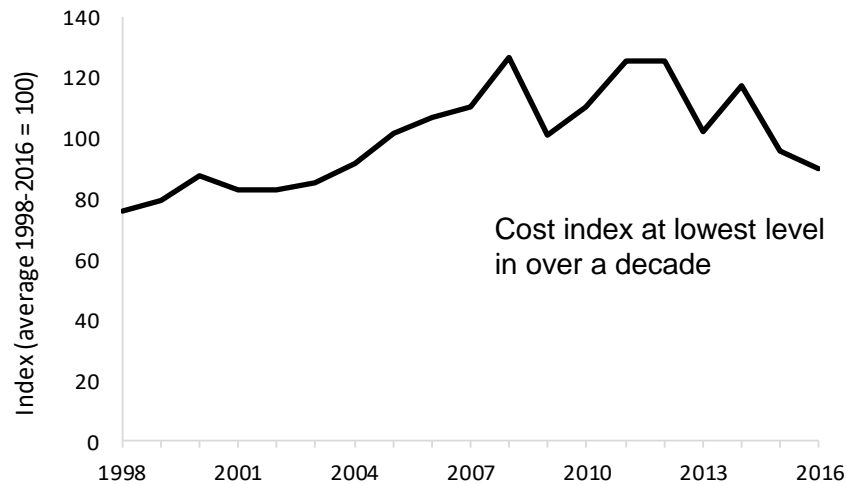


FFA

The southern longline fishery



Singapore marine diesel oil (MDO) nominal and real price series



Cost index at lowest level in over a decade

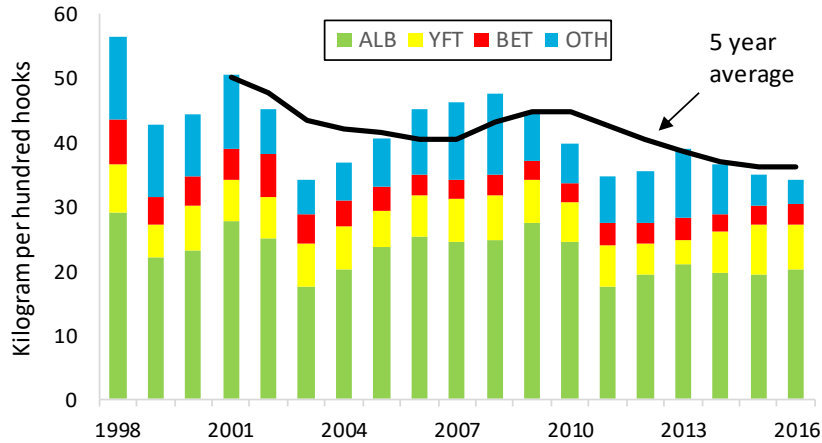
Cost index assumes non-fuel costs are constant in real terms with fuel costs varying in accordance with Singapore MDO price.

Fishing cost index for WCPO fisheries



FFA

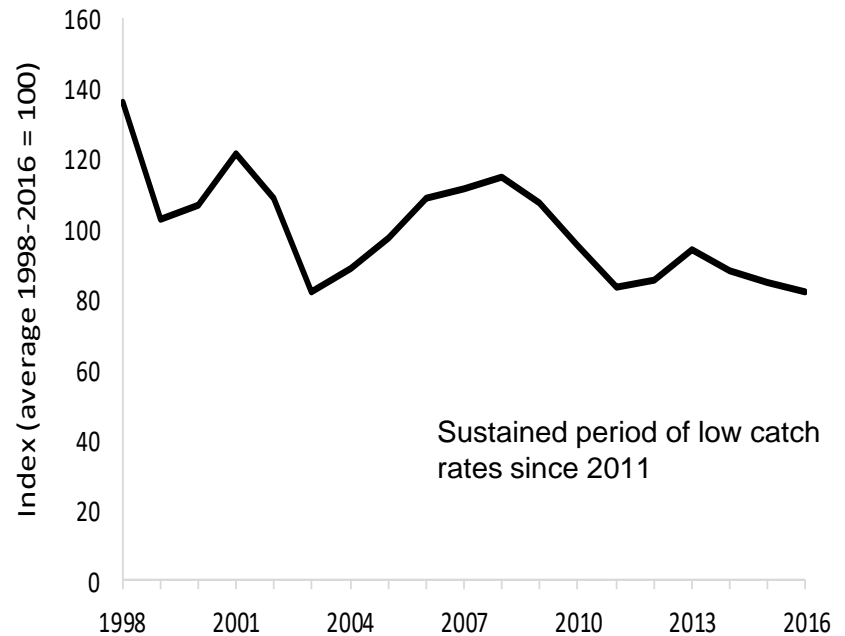
The southern longline fishery



CPUE in the southern longline fishery by species

Catch rates vary over time but general trend is one of decline with peaks and troughs occurring at lower levels.

Catch rate index in the southern longline fishery



Sustained period of low catch rates since 2011



FFA

Index of economic conditions

