



**TECHNICAL AND COMPLIANCE COMMITTEE**  
**Thirteenth Regular Session**  
**27 September – 3 October 2017**  
**Pohnpei, Federated States of Micronesia**

---

**Annual Report on WCPFC transshipment reporting, with an emphasis on high seas activities**

---

**WCPFC-TCC13-2017-RP03**  
**20 September 2017**

**Paper prepared by the Secretariat**

**Purpose**

1. This paper provides a summary report on transshipment activities from 1 January 2016 – 30 June 2017 based on data held by the Secretariat. The management and reporting arrangements for transshipments are focused mostly on activities occurring in the high seas in accordance with CMM 2009-06 Conservation and Management Measures on the Regulation of Transshipment.

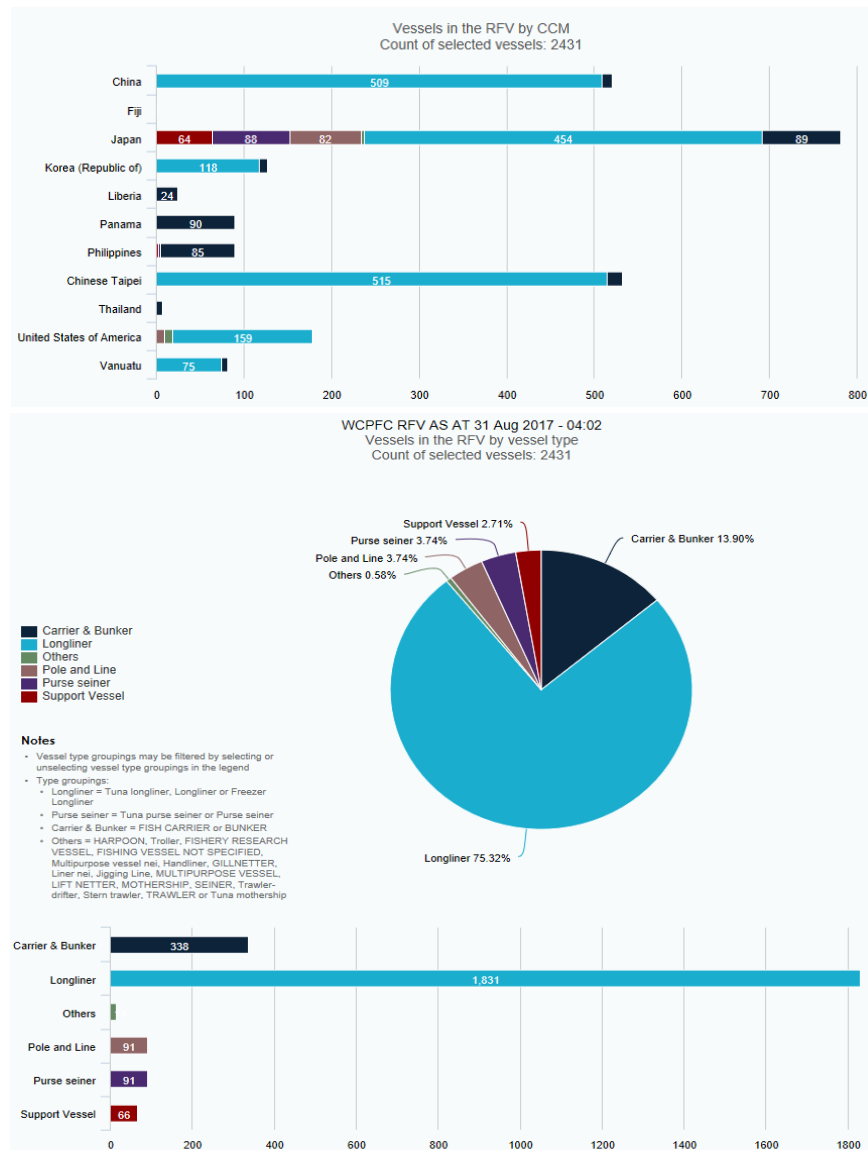
**Background**

2. Transshipment is defined to mean “the unloading of all or any of the fish onboard a fishing vessel to another fishing vessel either at sea or in port” (WCPFC Convention Article 1 (h)). Article 29 (1) of WCPFC Convention states, as a general rule, “In order to support efforts to ensure accurate reporting of catches, the members of the Commission shall encourage their fishing vessels, to the extent practicable, to conduct transshipment in port.” Recognizing this point, the Commission adopted CMM 2009-06 and it states that there shall be no transshipment on the high seas except where a CCM has determined, in accordance with certain guidelines (para 37) that it is impracticable for certain vessels to operate without being able to transship on the high seas and has advised the Commission of such (para 34).
3. CMM 2009-06 also operationalizes a number of Article 29 requirements including:
  - Reiterating Article 29(2) and confirming that transshipment at a port or in an area within the waters under the national jurisdiction of a member of the Commission, shall take place in accordance with national laws (CMM 2009-06, paragraph 4);
  - Elaborating on procedures prefaced in Article 29(3), through establishing reporting procedures for CCMs to submit data on the quantity and species transshipped both in port and at sea (CMM 2009-06 paragraph 10 -12);
  - Establishing terms and conditions for transshipments in areas beyond national jurisdiction (Article 29(4) and Annex III (4)) including required reporting and the requirement to have a regional observer programme observer present to monitor and verify high seas transshipments (CMM 2009-06, para 14 – 17 and 35); and
  - Establishing procedures in accordance with Article 29(5) to support the Commissions adoption of specific exemptions for existing operations, from the prohibition on transshipment at sea by purse seine vessels (CMM 2009-06 25 – 32).

## Authorisations to transship on the high seas

4. At the time of writing this paper, 2431 out of 4658 vessels (52%) on the RFV flagged to 11 CCMs have a positive determination of authorisation to transship in the high seas: in accordance with CMM 2014-03 the remaining vessels are understood to be notified as not authorized to transship on the high seas. The majority of vessels authorized to transship on the high seas are longliners/tuna longliners and there are also carriers, troll vessels, some purse seine vessels and support vessels. A summary of the vessels that are authorized to transship in the high seas as contained in the WCPFC RFV as at 31 August 2017 is provided in Figure 1.

**Figure 1. Summary of the vessels contained in the WCPFC RFV with positive determinations by their flag CCM of authorization to transship in the high seas, as at 31 August 2017**



## Review of information reported on high seas pre-transshipment notices and post-transshipment declarations, with a focus on 2016 and first half of 2017

5. WCPFC has received reporting for over 4712 high seas transshipment events since June 2010, when CMM 2009-06 was implemented. The spread of transshipments since the introduction of CMM 2009-06 is shown in Table 1 at end of this paper. Noting that 2010 and 2011 should be considered provisional, and may include transshipment events that occurred within EEZ areas, and is subject to change.
6. Details of the high seas transshipment reported to WCPFC for the 2013 – 2017 period is summarized in Tables 2 – 5 and Figures 2 – 5 which follow at end of this paper. Some points of note from the information provided related to 2016 year and first six months of 2017 include:
  - a. Reported high seas transshipments were sparse in the north western and south eastern part of the WCPF Convention Area, and were more dense in the tropical eastern Pacific, particularly within and around the overlap area with IATTC;
  - b. Some high seas transshipment activities were reported to have occurred within most of the high seas pockets during 2016/17;
  - c. Some high seas transshipment activities were reported to have occurred in the southern part of the Convention Area;
  - d. Reasonable proportions of the total estimated longline catch of bigeye tuna, albacore and swordfish were reported to have been transshipped in the high seas during 2016 (Table 3);
  - e. Compared to 2015, there were comparable reported quantities of bigeye tuna and swordfish transshipped in the high seas during 2016, and an increase in the reported quantities of albacore transshipped in the high seas during 2016;
  - f. There was a greater proportion of albacore tuna reported by quantity to have been transshipped in the western high seas of the WCPO during 2016;
  - g. There was a greater proportion bigeye and yellowfin tuna reported in the quantities transshipped, in the eastern central high seas of the WCPO during 2016;
  - h. The first six months of 2017, is comparable in distribution and reported quantities to the 2016 levels of high seas transshipment events in the high seas;
  - i. The list of vessels which CCMs have advised WCPFC of having positive determinations of impracticability in accordance with paragraph 34 of CMM 2009-06 (through the Record of Fishing Vessels), now includes the majority of vessels that are reported to be involved in high seas transshipments; and
  - j. Reporting by CCMs of high seas transshipment events continued to improve. This may be due to a number of factors including the fact that this obligation is assessed under the Compliance Monitoring Scheme; the work that the Secretariat does in terms of informing CCMs of any reporting gaps early in the year; and/or simply perhaps vessels/CCMs are becoming more familiar with the reporting requirement, but gaps remain in WCPFC holdings of reported transshipment events.

#### **CCMs reporting on implementation of CMM 2009-06 through Annual Report Part 2**

7. As per previous years, CCMs were required to report against CMM 2009-06 in the 2015 Annual Report Part 2 covering 2015 activities.
8. Twentythree (23) CCMs reported in their fish/did not fish report that they had flagged vessels fishing beyond areas of national jurisdiction and seven (7) of these CCMs had flag vessels involved in high

seas transshipment activities in 2016. **Annex 1** provides a summary of CCMs response in Annual Report Part 2 related to CMM 2009-06 implementation in 2016 as at 31 August 2017.

### **Summary of reports in Annual Report Part 1 – Annex II of CMM 2009-06**

9. As per previous years, CCMs were required to report against all transshipment activities covered by CMM 2009-06 (including transshipment activities that occur in ports and in EEZs) in the 2017 Annual Report Part 1 covering 2016 activities (CMM 2009-06 paragraph 11). The report is to be in accordance with the guidelines in Annex II to CMM 2009-06. In addition, paragraph 11 says “In doing so, CCMs shall take all reasonable steps to validate and where possible, correct information received from vessels undertaking transshipment using all available information such as catch and effort data, position data, observer reports and port monitoring data.”
10. TCC10 requested that the Secretariat expand its annual transshipment report to include a summary of the information on transshipment activities that CCMs report annually through Annual Report Part 1 (CMM 2009-06 paragraph 11) in aggregate form (TCC10 Summary Report para 191). **Annex 2A – 2D** to this paper provide a summary of CCMs responses in 2017 Annual Report Part 1 (covering 2016 year) of their annual report against all transshipment activities covered by CMM 2009-06. Consistent with data for the previous TCC reports, it is clear that there are differing interpretations of Annex II requirements amongst CCMs, different levels of reporting as well as some reporting gaps. This makes it difficult to easily summarize CCMs annual reporting into a single document. TCC may wish to review and consider the utility of these annexes (2A-2D).

### **Updates on progress towards expanding the capability of the Secretariat to cross-verify high seas transshipment activity and monitor reporting**

11. The Secretariat provides the following updates:

a) *Update on progress towards more routine advice of high seas transshipment reporting gaps:* It is now routine business for the Secretariat to provide detailed supporting documentation to CCMs who are involved in high seas transshipment activities advising of gaps and timeliness of submissions. This was provided in the first quarter of 2017, and updates provided at the time of disseminating draft Compliance Monitoring Reports in late July. The Secretariat continues to work towards making such information on transshipment reporting gaps available more routinely to relevant CCMs (eg quarterly report); and

b) *Update on progress towards improved capability to verify high seas transshipment reporting through VMS analysis and observer data:* The work to incorporate IT solutions that verify high seas transshipment reporting through VMS analysis and observer data is still a work in progress. The Secretariat continues to see this mechanism as a priority initiative which will better support WCPFC VMS monitoring, and the work in response to this is ongoing.

12. The Secretariat maintains that E-reporting initiatives are likely to offer much potential for improving the quality and timeliness of information on high seas transshipments by presenting a standardized electronic format as alternative to the pdf and in-text emails format that many CCMs are currently using for submitting their notification and post-transshipment declarations. Draft standards for the E-

reporting of high seas transshipment notification and declarations are provided in **WCPFC-TCC13-2017-15**.

#### **Update on Transshipment Memorandum of Cooperation (MoC) with CCSBT**

13. CCMs would recall that WCPFC13 agreed that a MoC on the endorsement of WCPFC ROP Observers for observing transshipments of Southern Bluefin Tuna on the high seas of the WCPFC Convention Area with CCSBT should be signed (WCPFC 13 Summary report paragraph 665 and Attachment Y). The MoC was signed by the WCPFC Chair on 18 April 2017 and by the CCSBT Chair on 5 June 2017.
  
14. The CCSBT Secretariat and WCPFC Secretariat have commenced work towards developing the systems and processes necessary to operationalise the Transshipment MoC. During February 2017, the CCSBT Secretariat provided the WCPFC Secretariat with a high-level summary of items that would likely need to be considered before implementation could occur, including observer training and deployment arrangements, reporting requirements, revision of any associated key documents, and potential associated costs. The WCPFC Secretariat then provided comments and feedback in relation to these items. During the second half of 2017, and following a request from the WCPFC Secretariat, the CCSBT Secretariat produced a draft summary document identifying key data elements to be collected and/or reports to be produced by WCPFC ROP observers that are assigned/endorsed to observe High Seas transshipments involving Southern Bluefin Tuna within the WCPFC Convention Area. This information exchange will assist with discussions on whether there are any specific observer training materials that need to be developed prior to implementation of the MoC, and the extent to which specific observer training courses might need to be considered. The two Secretariats will continue to collaborate in establishing the systems and processes necessary to implement the MoC as soon as possible.

#### **Administrative note**

15. All general transshipment reporting inquiries and reporting submissions should be directed to the email address: [Transshipment@wcpfc.int](mailto:Transshipment@wcpfc.int)

#### **Recommendation**

16. TCC13 is invited to consider the:
  - (a) utility of the summary of transshipment activities that CCMs report annually through Annual Report Part 1 (CMM 2009-06 paragraph 11) provided in Annex 2A-2D; and
  - (b) Annual Report on Transshipment.

**Table 1. Summary of High Seas transshipments reported to the WCPFC from June 2010 – 30 Jun 2017**

	<b>Number of reported transshipment events</b>	<b>Number of receiving vessels</b>	<b>Number of offloading vessels</b>
<b>Jun – 31 Dec 2010</b>	231	17	158
<b>2011</b>	680	22	281
<b>2012</b>	525	19	236
<b>2013</b>	593	18	297
<b>2014</b>	552	23	299
<b>2015</b>	754	22	304
<b>2016</b>	948	23	352
<b>2017</b>	429	18	324
	<b>4,712</b>		

**Table 2. Number of reported transshipment events by reporting CCM during January 2013 – 30 June 2017  
count of events by offloading vessel**

<b>Reporting CCM</b>	<b>2013</b>	<b>2014</b>	<b>2015</b>	<b>2016</b>	<b>2017</b>
Belize	3				
China	186	182	239	306	91
Indonesia	11	3			
Japan	58	31	29	28	10
Kiribati	5				
Korea (Republic of)	43	60	88	77	33
Philippines	4	2			
Solomon Islands					
Chinese Taipei	137	173	186	289	206
United States of America	1				
Vanuatu	145	101	212	248	89
	<b>593</b>	<b>552</b>	<b>754</b>	<b>948</b>	<b>429</b>

**count of events by receiving vessel**

<b>Reporting CCM</b>	<b>2013</b>	<b>2014</b>	<b>2015</b>	<b>2016</b>	<b>2017</b>
Belize	41				
China		23			
Kiribati	40	133	68		
Korea (Republic of)	21	27	86	94	76
Liberia				193	123
Panama	52	34	53	269	93
Chinese Taipei			55	113	75
United States of America	1				
Vanuatu	438	335	492	279	62
	<b>593</b>	<b>552</b>	<b>754</b>	<b>948</b>	<b>429</b>

**Table 3. Summary information comparing the reported quantities of highly migratory fish stocks which were reported have been transhipped in 2016, with the 2016 provisional longline catch estimates for the WCPFC Statistical Area. [BUM = blue marlin, MLS = striped marlin, SWO = swordfish]**

	ALB	BET	YFT	BUM	MLS	SWO
<b>Reported quantities on WCPFC high seas Transshipment Declarations (Mt)</b>	18,135	23,640	9,099	2604	530	3,592
<b>2016 provisional longline catch estimates in WCPFC Statistical Area (Mt)<sup>1</sup></b>	71,571	64,131	90,539	15,023	2,980	16,510
<b>Reported quantities of high seas transshipments as a % of total provisional catch estimates</b>	<b>25.3%</b>	<b>36.9%</b>	<b>10.0%</b>	<b>17.3%</b>	<b>17.8%</b>	<b>21.8%</b>

**Table 4. Provisional summary of reported transshipments events to WCPFC for the 2016 calendar year as at 12 Sept 2017, may not include CCMs updates provided as part of dCMR**

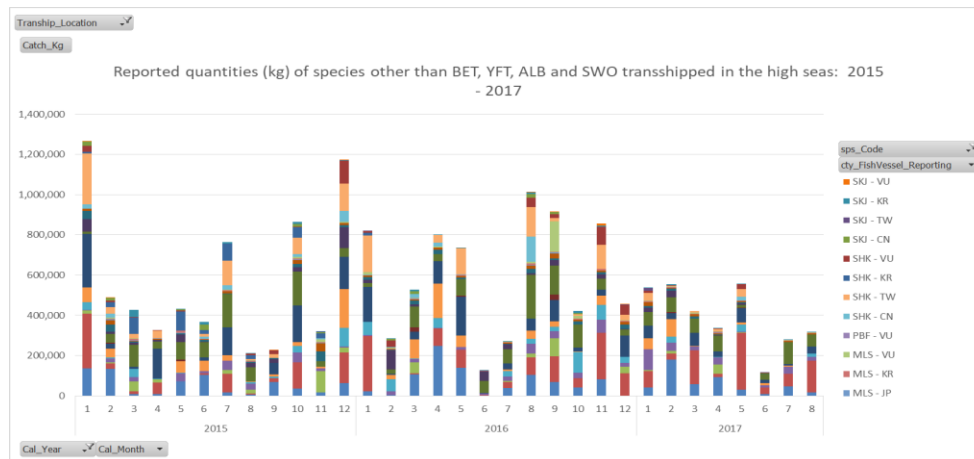
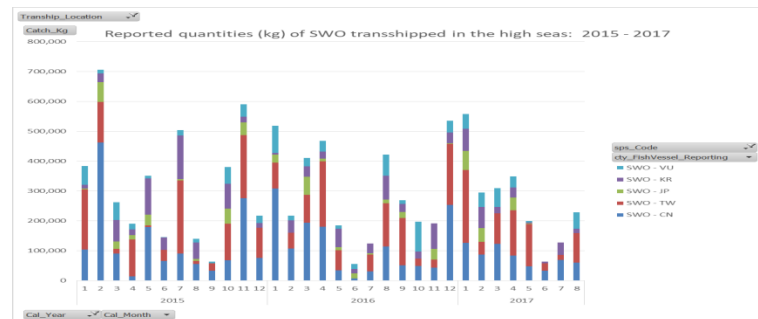
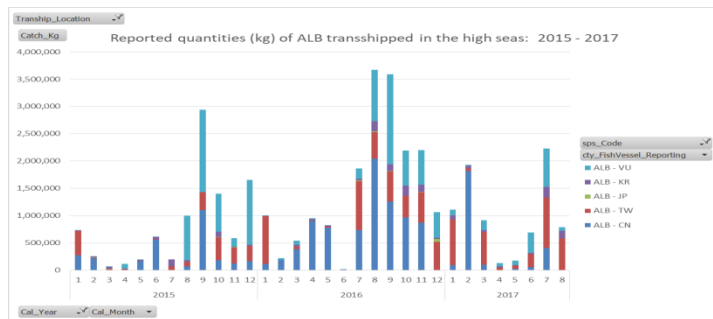
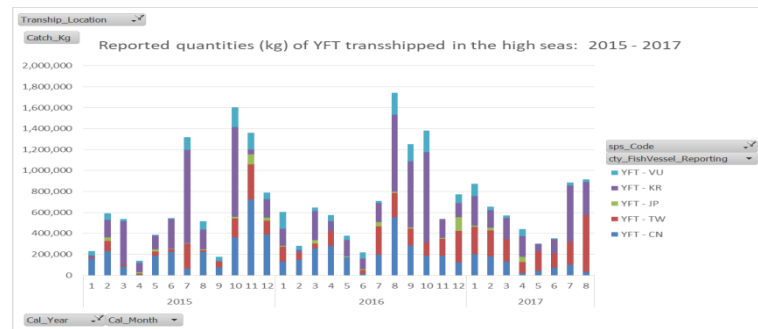
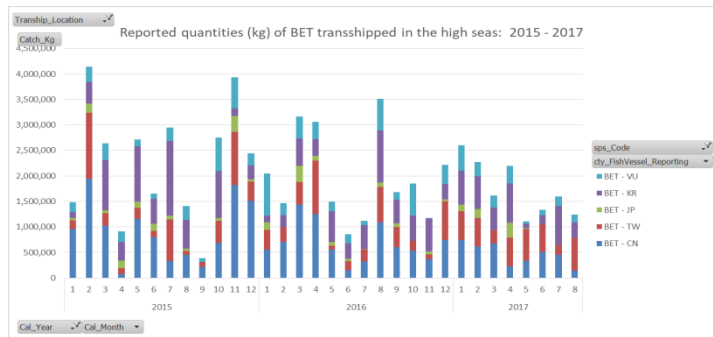
	Count of vessels in reports received		Count of reported transshipment events			
	As receiving vessels	As offloading vessels	Receiving vessel	Offloading vessel	advance notifications received CMM 09-06 35 a iii)	declarations received CMM 09-06 35 a iv)
China		122		306	301	303
Japan		14		28	28	28
Republic of Korea	3	60	94	77	94	94
Liberia	3		193		190	192
Panama	9		269		202	198
Chinese Taipei	3	101	113	289	113	113
Vanuatu	7	55	279	248	270	275
<b>Receiving vessels</b>	<b>24</b>		<b>948</b>		<b>869</b>	<b>872</b>
<b>Offloading vessels</b>		<b>352</b>		<b>948</b>	<b>927</b>	<b>926</b>

<sup>1</sup> Table 3: Longline catches in WCPFC Statistical Area, by species, and Table 18: Commercial catches of billfish in the WCPFC Statistical Area by gear type and species (WCPFC-SC13-2017/ST-IP-1)

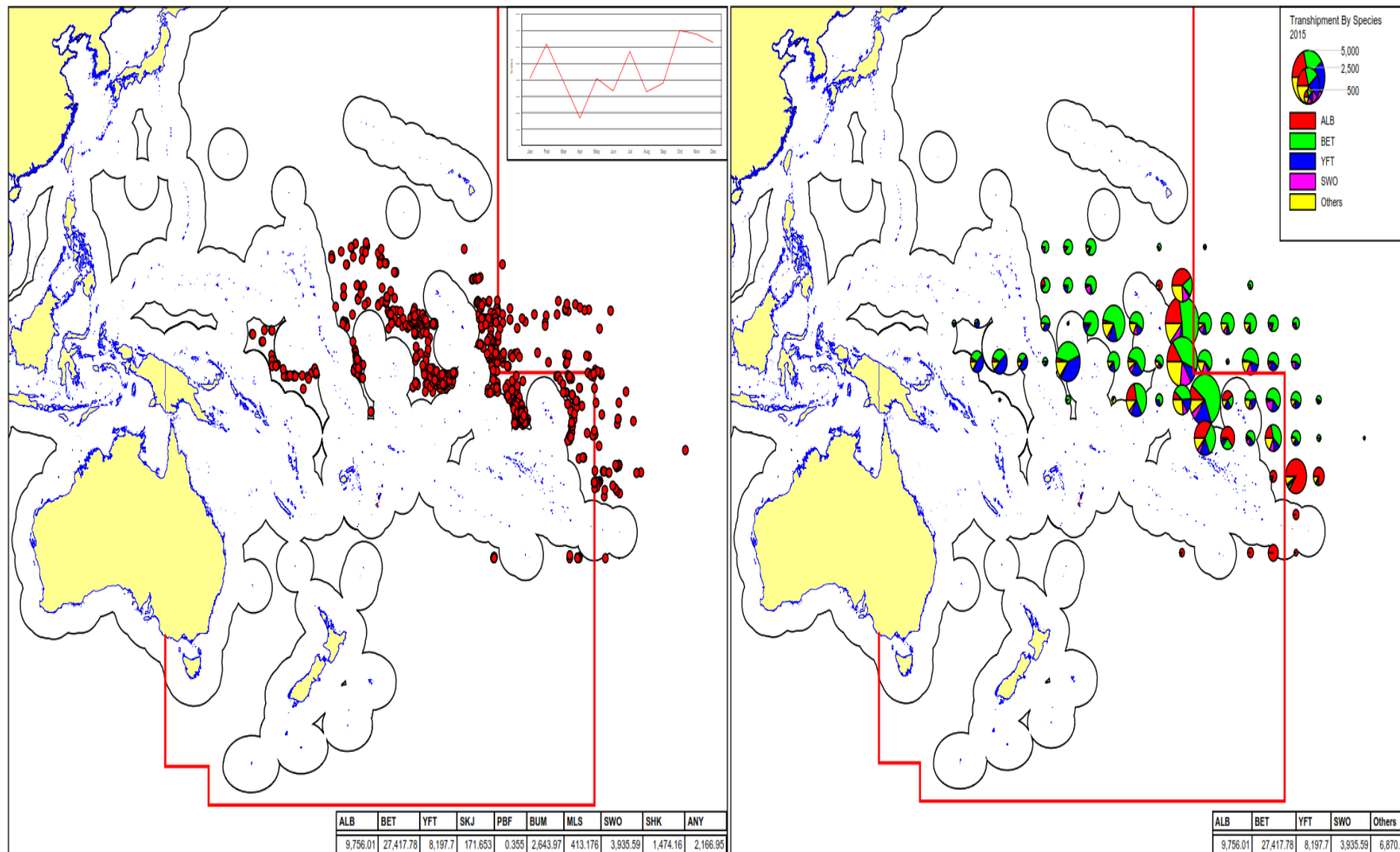
**Table 5. Reported quantities (kgs) of high seas transshipments of highly migratory fish stocks by species by month by year, based on reports received by WCPFC Secretariat from 2015 - 2017 under CMM 2009-06 para 35 a iv)**

Catch_Kg						
Year/Month	ALB	BET	SWO	YFT	Others	Total
<b>2015</b>	<b>9,756,006</b>	<b>27,417,785</b>	<b>3,935,591</b>	<b>8,197,697</b>	<b>6,870,258</b>	<b>56,177,336</b>
1	735,821	1,483,547	384,244	229,968	1,267,437	<b>4,101,017</b>
2	255,804	4,136,899	706,790	591,374	489,064	<b>6,179,931</b>
3	65,669	2,640,794	262,336	538,089	425,996	<b>3,932,884</b>
4	114,013	910,688	190,222	138,629	325,525	<b>1,679,077</b>
5	191,303	2,717,565	350,767	387,336	433,563	<b>4,080,534</b>
6	616,289	1,654,450	145,488	546,804	366,910	<b>3,329,941</b>
7	195,211	2,943,788	503,987	1,316,538	764,928	<b>5,724,452</b>
8	996,312	1,411,233	139,668	518,053	211,938	<b>3,277,204</b>
9	2,940,034	391,152	63,198	177,458	227,783	<b>3,799,625</b>
10	1,401,538	2,751,343	380,598	1,604,340	864,212	<b>7,002,031</b>
11	588,309	3,932,793	590,817	1,360,460	318,811	<b>6,791,190</b>
12	1,655,703	2,443,533	217,476	788,648	1,174,092	<b>6,279,451</b>
<b>2016</b>	<b>18,135,483</b>	<b>23,640,591</b>	<b>3,592,431</b>	<b>9,099,425</b>	<b>7,231,002</b>	<b>61,698,931</b>
1	1,004,230	2,046,874	518,151	604,416	822,182	<b>4,995,853</b>
2	219,739	1,466,837	216,713	282,044	284,424	<b>2,469,757</b>
3	539,762	3,162,450	410,686	645,199	526,968	<b>5,285,064</b>
4	953,708	3,061,212	468,116	577,331	799,642	<b>5,860,009</b>
5	821,633	1,497,307	185,122	379,034	736,032	<b>3,619,128</b>
6	12,594	856,659	55,397	217,003	125,623	<b>1,267,276</b>
7	1,864,819	1,120,049	123,700	708,238	273,383	<b>4,090,189</b>
8	3,668,527	3,509,312	421,936	1,743,746	1,011,770	<b>10,355,291</b>
9	3,591,421	1,682,392	268,803	1,253,051	915,956	<b>7,711,623</b>
10	2,194,418	1,846,693	197,268	1,381,716	421,413	<b>6,041,508</b>
11	2,197,997	1,170,806	191,117	535,603	856,233	<b>4,951,756</b>
12	1,066,635	2,220,000	535,422	772,044	457,376	<b>5,051,477</b>
<b>2017</b>	<b>7,964,750</b>	<b>13,965,104</b>	<b>2,128,814</b>	<b>4,998,320</b>	<b>3,123,419</b>	<b>32,180,407</b>
1	1,105,386	2,599,813	557,584	874,945	538,840	<b>5,676,568</b>
2	1,931,203	2,268,266	294,998	655,368	554,264	<b>5,704,099</b>
3	916,792	1,614,651	308,956	571,742	422,970	<b>3,835,111</b>
4	127,332	2,195,087	348,894	441,182	336,622	<b>3,449,117</b>
5	174,363	1,108,498	198,796	301,678	558,418	<b>2,341,753</b>
6	691,063	1,339,092	63,337	354,761	115,756	<b>2,564,009</b>
7	2,232,335	1,597,655	127,681	884,808	277,989	<b>5,120,468</b>
8	786,276	1,242,042	228,568	913,836	318,560	<b>3,489,282</b>
<b>Grand Total</b>	<b>35,856,239</b>	<b>65,023,479</b>	<b>9,656,836</b>	<b>22,295,442</b>	<b>17,224,679</b>	<b>150,056,674</b>

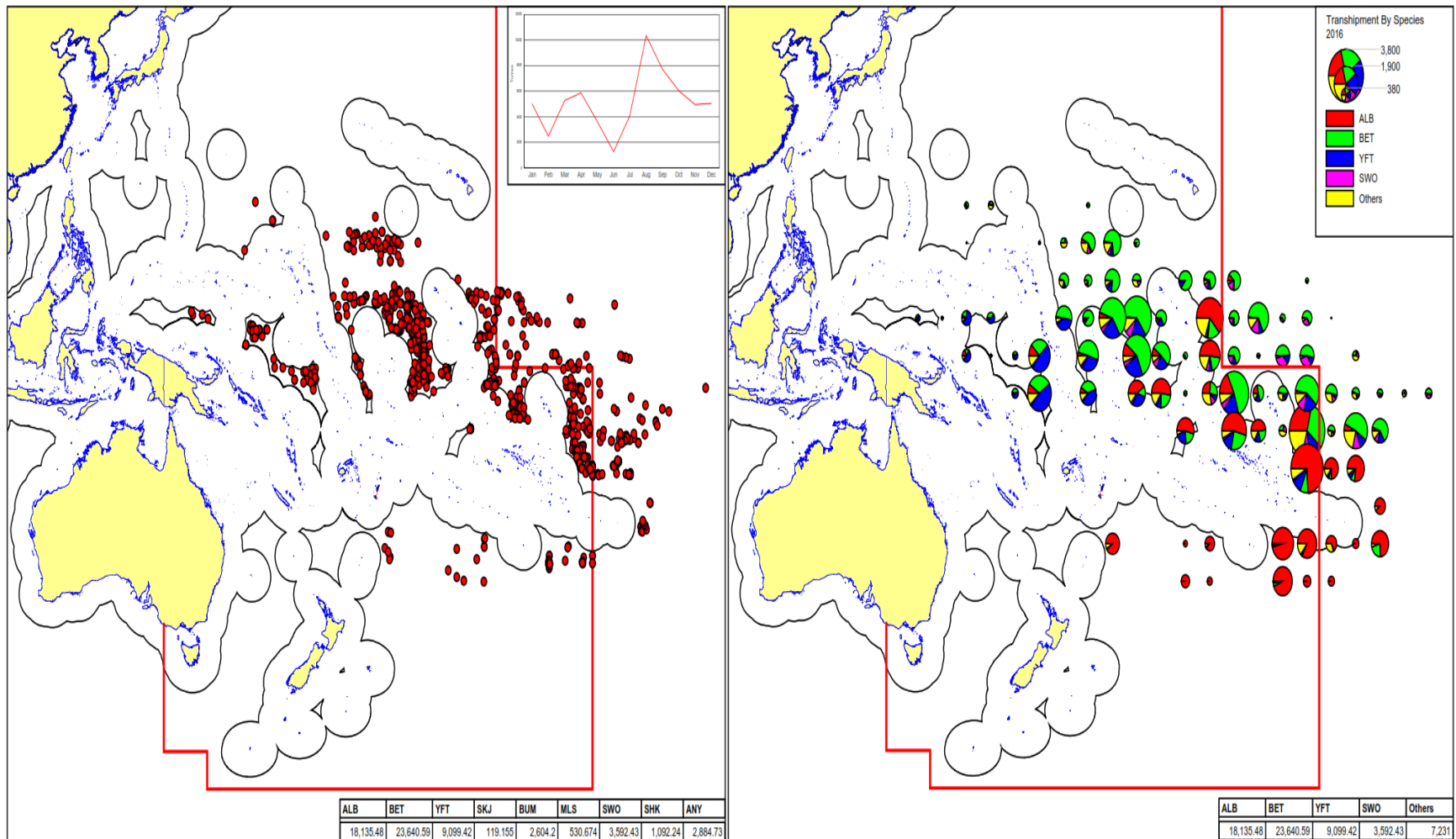




**Figure 2. Reported quantities (kg) of transshipments of highly migratory fish stocks by species for BET, YFT, ALB, SWO and Others, by month by year based on reports received by WCPFC from 2015-2017 under CMM 2009-06 para 35 a iv.**



**Figure 3. First map plot positions of transshipments of highly migratory fish stocks for 2015, based on reports to WCPFC under CMM 2009-06 paragraph 35 a iv). The graph at top right (of the first map) shows the number of transshipments by month, and the tables at bottom right show the total annual quantities (Mt) of highly migratory fish stocks by species or grouped as at 15 Sept 2017. The second map shows the distribution of the species being transhipped for the same period.**



**Figure 4. Map plotting positions of transshipments of highly migratory fish stocks for 2016, based on reports to WCPFC under CMM 2009-06 paragraph 35 a iv). The graph at top right shows the number of transshipments by month, and the tables at bottom right show the total annual quantities (Mt) of highly migratory fish stocks by species or grouped. [BLZ = BUM] as at 15 Sept 2017 and may not include replies to dCMR. The second map shows the distribution of the species being transhipped for the same period.**

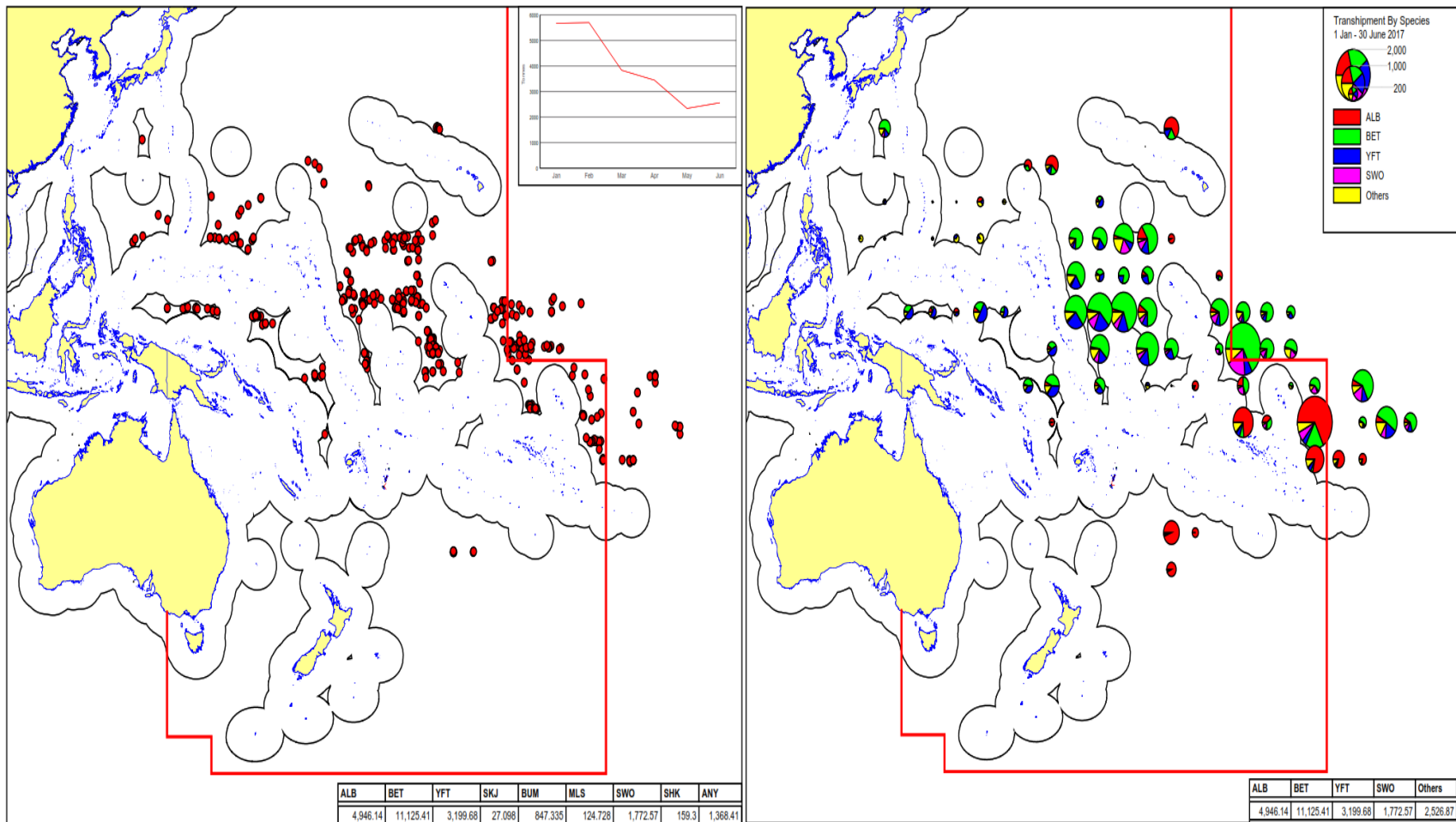


Figure 5. Map plotting positions of transshipments of highly migratory fish stocks for first 6 months of 2017, based on reports to WCPFC under CMM 2009-06 paragraph 35 a iv). The graph at top right shows the number of transshipments by month, and the tables at bottom right show the total annual quantities (Mt) of highly migratory fish stocks by species or grouped. [BLZ = BUM] as at 15 Sept 2017. The second map shows the distribution of the species being transshipped for the same period.

**Annex 1: Summary of CCMs responses in Annual Report Part 2 covering 2016 activities**

	<i>from Annual Report Part 2</i>	
	<b>CCM answer in AR Pt 2 when asked whether has been implemented (choice of Yes/No/N/A)</b>	<b>Summary of further information provided by CCM in AR Pt 2</b>
<b>CMM 2009-06 11</b> <b>(Annual report on all transshipment activities covered by this Measure (including transshipment activities that occur in ports or EEZs) in accordance with the specified guidelines (Annex II))</b>	21 Yes	Refer to Annual Report Part 1; there was no transshipment activities in 2016
	14 N/A	No flagged vessels fished in 2016/Had flagged vessels in 2016 but none were authorized or did tranship in high seas in 2016.
	2 blank (outstanding AR Part 2)	
<b>CMM 2009-06 13</b> <b>(CCM shall ensure that vessels they are responsible for carry observers from the WCPFC ROP to observe transshipments at sea)</b>	14 Yes	Implemented through national legislation/regulation/license terms and conditions / No flagged vessels transshipped in 2016.
	21 N/A	No flagged vessels fished in 2016/Had flagged vessels in 2016 but none were authorized or did tranship in high seas in 2016.
	2 blank (outstanding AR Part 2)	
<b>CMM 2009-06 29</b> <b>(only authorize those purse seine vessels that that have received an exemption by the Commission to engage in transshipment outside of port. Where applicable, flag CCM authorisation should be vessel-specific and address any specific conditions identified by the Commission.)</b>	10 Yes	Implemented through national legislation/regulation/license terms and conditions
	25 N/A	No flagged purse seiners fished in 2016/Had flagged purse seine vessels in 2016 but none were granted an exemption to tranship outside of port.
	2 blank (outstanding AR Part 2)	
<b>CMM 2009-06 34 35(ii)</b> <b>(Ban on high seas transshipment, unless a CCM has determined impracticability in accordance with para 37 guidelines, and has advised the Commission of such.)</b>	11 Yes	Either fully implemented or law/regulation that prohibits at sea transshipment.
	24 N/A	No flagged vessels fished in 2016/Had flagged vessels in 2016 but none were authorized or did tranship in high seas in 2016.
	2 blank (outstanding AR Part 2)	
<b>CMM 2009-06 35 a(iii) a (iv)</b> <b>(reporting prior to high seas transshipment and declaration after transshipment event)</b>	14 Yes	Required reports submitted to the Secretariat or activities were not allowed
	21 N/A	No flagged vessels fished in 2016/Had flagged vessels in 2016 but none were authorized or did tranship in high seas in 2016.
	2 blank (outstanding AR Part 2)	

**Annex 2A: Summary of CCM reporting of 2016 number of annual transshipments events as reported in Annual Report Part 1 2017 covering 2016 calendar year <sup>2</sup> based on reports submitted to WCPFC as at 31 July 2017. Note may not include CCM replies in 2017 through dCMR.**

Reporting CCM	Vessel type	Number of transshipments by location of catches		Total	Number of transshipments by location of transshipment					
		Catches in WCPFC area	Catches outside of WCPFC area		WCPFC: in archipelagic and territorial seas	WCPFC: In port	WCPFC: EEZ	WCPFC: high seas	Outside WCPFC: in port	Outside WCPFC: at sea
Japan	Carrier	0	0	0		0	0	0	0	0
Korea	Carrier					119	21	79	0	16
Liberia	Carrier						178	230 (+66)		38
China	LL			333 (+27)		2	25			
Fiji	LL	13		13	13					
Indonesia	LL									
Japan	LL	19	10	29		1		18		10
Korea	LL	104	11	1115		8	28	58	0	20
Chinese Taipei	LL					485		199		107
Tuvalu	LL	2		2		2				
Vanuatu		204	50			17	76	186		
El Salvador	PS	0	0	0		0				
FSM	PS	145		145		145				
	LL	131		131		131				
Kiribati	LL & PS									
Korea	PS	346	0	346		346	0	0	0	0
New Zealand	PS	2		2		2				

<sup>2</sup> Includes data from 2017 Annual Report Part 1 covering 2016 activities for transshipment reports where the reported information fit into the above template. Some CCMs including those not listed above may have provided a partial report in 2017 Annual Report Part 1, but this was not able to be included in the above table owing to data gaps, designation of confidential data or the use of a format that doesn't transfer easily into the above template (eg gear types were combined or not specified).

<b>RMI</b>	<b>PS</b>	83		<b>83</b>		83				
<b>Solomon Is</b>	<b>PS</b>									
<b>Chinese Taipei</b>	<b>PS</b>					251				
<b>Tuvalu</b>	<b>PS</b>	1		<b>1</b>		1				
<b>USA</b>	<b>PS</b>	165		<b>165</b>		165				

**Annex 2B: Summary of CCM reporting of 2016 quantity of annual transshipments offloaded from longline vessels as reported in 2017 Annual Report Part 1 covering 2016 calendar year<sup>3</sup> based on reports submitted to WCPFC as at 31 July 2017. Note may not include CCM replies in 2017 through dCMR.**

Reporting CCM	Vessel type		Quantity of transshipments by location of catches (Mt)		total	Quantity of transshipments by location of transshipment (Mt)					
			Catches in WCPFC area	Catches outside of WCPFC area		WCPFC: in archipelagic and territorial sea	WCPFC: In port	WCPFC: EEZ	WCPFC: high seas	Outside WCPFC: in port	Outside WCPFC : at sea
<b>China</b>	<b>LL</b>				<b>24,203.872</b>						
<b>European Union</b>	<b>LL</b>				<b>2.627</b>						
<b>FSM</b>	<b>LL</b>	<b>ALB</b>	175		<b>175</b>		175				
<b>Fiji</b>	<b>LL</b>	<b>ALB</b>	1.28		<b>1.28</b>	1.28					
<b>Korea</b>	<b>LL</b>	<b>ALB</b>	1014.327	108.749	<b>1123.076</b>		85.904	235.629	634.8		170.362
<b>Chinese Taipei</b>		<b>ALB</b>	8,092	1,004	<b>9,096</b>		4,881		1,926		2,289
<b>Tvualu</b>	<b>LL</b>	<b>ALB</b>	88,101.6		<b>88,101.6</b>		88,101.6				
<b>FSM</b>	<b>LL</b>	<b>BET</b>	699		<b>699</b>		699				
<b>Fiji</b>	<b>LL</b>	<b>BET</b>	5.39		<b>5.39</b>	5.39					
<b>Japan</b>	<b>LL</b>	<b>BET</b>	680	43	<b>723</b>		37		543+43		100

<sup>3</sup> Includes data from 2017 Annual Report Part 1 covering 2016 activities for transshipment reports where the reported information fit into the above template. Some other CCMs not listed above may have provided a partial report in 2017 Annual Report Part 1, but this was not able to be included in the above table owing to data gaps, designation of confidential data or the use of a format that doesn't transfer easily into the above template (eg gear types were combined or not specified).

Reporting CCM	Vessel type		Quantity of transshipments by location of catches (Mt)		total	Quantity of transshipments by location of transshipment (Mt)					
			Catches in WCPFC area	Catches outside of WCPFC area		WCPFC: in archipelagic and territorial sea	WCPFC: In port	WCPFC: EEZ	WCPFC: high seas	Outside WCPFC: in port	Outside WCPFC : at sea
Korea	LL	BET	6399.761	2151.415	<b>8551.176</b>		567.616	2406.836	3760.427		1816.297
Chinese Taipei		BET	6,335	1,324	<b>7,659</b>		2,261		3,969		1,477
Tuvalu	LL	BET	167,859.1		<b>167,859.1</b>		167,859.1				
Vanuatu	LL						10,256.40	474.6	11,304.5		
Chinese Taipei		BUM	1,408	269	<b>1,677</b>		714		677		286
Korea	LL	MLS	45.643	27.889	<b>73.532</b>		2.403	18.168	31.403		21.558
Korea	LL	BUM	1218.905	220.399	<b>1439.304</b>		98.532	374.946	774.873		190.953
Chinese Taipei	LL	MLS	170	32	<b>202</b>		85		66		51
Fiji	LL	OTH	0.636		<b>0.636</b>	0.636					
Japan	LL	OTH	276	1	<b>277</b>		2		154+1		120
Korea	LL	OTH	253.089	133.935	<b>387.024</b>		27.521	86.018	149.833		119.822
Chinese Taipei		OTH	2,063	263	<b>2,326</b>		1,292		444		590
Tuvalu	LL	OTH	43,039		<b>43,039</b>		43,039				
Chinese Taipei		SHK	754	181	<b>935</b>		288		230		417
FSM	LL	SKJ	31		<b>31</b>		31				
Korea	LL	SKJ	85.776	9.738	<b>95.514</b>		4.230	29.484	50.071		11.729
Chinese Taipei		SKJ	3		<b>3</b>		3				
Tuvalu	LL	SKJ	9,680		<b>9,680</b>		9,680				
Japan	LL	SWO	123	5	<b>128</b>		17		78+5		28
Korea	LL	SWO	421.161	325.400	<b>746.561</b>		45.366	207.092	242.774		251.329
Tuvalu	LL	SWO	6,357.3		<b>6,357.3</b>		6,357.3				



Reporting CCM	Vessel type		Quantity of transshipments by location of catches (Mt)		total	Quantity of transshipments by location of transshipment (Mt)					
			Catches in WCPFC area	Catches outside of WCPFC area		WCPFC: in archipelagic and territorial sea	WCPFC: In port	WCPFC: EEZ	WCPFC: high seas	Outside WCPFC: in port	Outside WCPFC : at sea
FSM	LL	YFT	692		<b>692</b>		692				
Fiji	LL	YFT	10.55		<b>10.55</b>	10.55					
Japan	LL	YFT	211	6	<b>217</b>		3		198+6		13
Korea	LL	YFT	4986.850	346.781	<b>5333.631</b>		534.194	1324.284	3097.560		377.593
Chinese Taipei		YFT	6,136	269	<b>6,405</b>		4,593		1,313		502
Tuvalu	LL	YFT	182,836.6		<b>182,836.6</b>		182,836.6				

Annex 2C: Summary of CCM reporting of 2016 quantity of annual transshipments offloaded from purse seine vessels as reported in Annual Report Part 1 2017 covering 2016 calendar year <sup>4</sup> based on reports submitted to WCPFC as at 31 July 2017. Note may not include CCM replies in 2017 through dCMR.

Reporting CCM	Vessel type		Quantity of transshipments by location of catches (Mt)		Total (Mt)	Quantity of transshipments by location of transshipment (Mt)				
			Catches in WCPFC area	Catches outside of WCPFC area		WCPFC: In port	WCPFC: EEZ	WCPFC: high seas	Outside WCPFC: in port	Outside WCPFC : at sea
European Union	PS	BET			<b>0.382</b>	0.382				
FSM	PS	BET	3,026		<b>3026</b>	3,026				
Kiribati	PS									
Korea	PS	BET	4,258.3		<b>4,258.3</b>	4,258.3				
New Zealand	PS	BET	23		<b>23</b>	23				
RMI	PS	BET	679		<b>679</b>	679				

<sup>4</sup> Includes data from 2017 Annual Report Part 1 covering 2016 activities for transshipment reports where the reported information fit into the above template. Some other CCMs not listed above may have provided a partial report in 2017 Annual Report Part 1, but this was not able to be included in the above table owing to data gaps, designation of confidential data or the use of a format that doesn't transfer easily into the above template (eg gear types were combined or not specified).

Reporting CCM	Vessel type		Quantity of transshipments by location of catches (Mt)		Total (Mt)	Quantity of transshipments by location of transshipment (Mt)				
			Catches in WCPFC area	Catches outside of WCPFC area		WCPFC: In port	WCPFC: EEZ	WCPFC: high seas	Outside WCPFC: in port	Outside WCPFC : at sea
Solomon Is	PS	BET	1,013.412		<b>1,013.412</b>	1,013.412				
Chinese Taipei	PS	BET	3,148		<b>3,148</b>	3,148				
USA	PS	BET			<b>1,966</b>	1,966				
European Union	PS	SKJ			<b>0.933</b>	0.933				
FSM	PS	SKJ	61,399		<b>61399</b>	61,399				
Korea	PS	SKJ	223,649.3		<b>223,649.3</b>	223,649.3				
New Zealand	PS	SKJ	930		<b>930</b>	930				
RMI	PS	SKJ	52,870		<b>52870</b>	52870				
Solomon Is	PS	SKJ	69,472.435		<b>69,472.435</b>	49,472.435				
Chinese Taipei	PS	SKJ	140,188		<b>140,188</b>	140,188				
Tuvalu	PS	SKJ	6,570		<b>6,570</b>	6,570				
USA	PS	SKJ			<b>90,818</b>	90,818				
European Union	PS	YFT			<b>0.069</b>	0.069				
FSM	PS	YFT	11,445		<b>11,445</b>	11,445				
Korea	PS	YFT	44,955.9		<b>44,955.9</b>	44,955.9				
New Zealand	PS	YFT	23		<b>23</b>	23				
RMI	PS	YFT	6,733		<b>6733</b>	6,733				
Solomon Is	PS	YFT	23,036.9		<b>23,036.9</b>	23,036.9				
Chinese Taipei	PS	YFT	32,214		<b>32,214</b>	32,214				
Tuvalu	PS	YFT	205		<b>205</b>	205				
USA	PS	YFT			<b>12,015</b>	12,015				
Solomon Is	PS	OTH	11.2		<b>11.2</b>	11.2				

**Annex 2D: Summary of CCM reporting of 2016 quantity of annual transshipments received by carriers as reported in 2017 Annual Report Part 1 covering 2016 calendar year<sup>5</sup> based on reports submitted to WCPFC as at 31 July 2017. Note may not include CCM replies in 2017 through dCMR.**

Reporting CCM	Vessel type		Quantity of transshipments by location of catches (Mt)		total	Quantity of transshipments by location of transshipment (Mt)				
			Catches in WCPFC area	Catches outside of WCPFC area		WCPFC: In port	WCPFC: EEZ	WCPFC: high seas	Outside WCPFC: in port	Outside WCPFC : at sea
Korea	carrier	ALB				92.258	216.666	2097.604		
Korea	carrier	BET				3502.704	1754.567	3541.448		
Korea	carrier	BUM				46.095	266.444	495.19		
Korea	carrier	MLS				1.127	12.827	38.093		
Korea	carrier	OTH				1250.521	73.797	306.151		
Korea	carrier	SKJ				237,693.604	13.243	21.913		
Korea	carrier	SWO				12.285	128.99	239.735		
Korea	carrier	YFT				43,501.376	974.821	2001.09		
LR	carrier	BET						8090.275		
LR	Carrier	YFT						2459.946		
LR	Carrier	SWO						694.088		
LR	Carrier	MLS						99.059		
LR	Carrier	BUM						113.339		
LR	Carrier	ALB						1157.941		
LR	Carrier	SKJ						19.626		
LR	Carrier	OTH						285.711		

(for LR transhipment area – they were in CA-HS, Overlap area, IATTC high seas, KI EEZ, TV EEZ and PNG EEZ)

<sup>5</sup> Includes data from 2017 Annual Report Part 1 covering 2016 activities for transshipment reports where the reported information fit into the above template. Some CCMs including those not listed above may have provided a partial report in 2017 Annual Report Part 1, but this was not able to be included in the above table owing to data gaps, designation of confidential data or the use of a format that doesn't transfer easily into the above template (eg gear types were combined or not specified).