



TECHNICAL AND COMPLIANCE COMMITTEE

Thirteenth Regular Session
27 September – 3 October 2017
Pohnpei, Federated States of Micronesia

DRAFT STANDARDS FOR THE E-REPORTING OF TRANSHIPMENT DECLARATIONS AND TRANSHIPMENT NOTICES

WCPFC-TCC13-2017-15
8 September 2017

Paper prepared by the Secretariat

Purpose

1. This paper presents draft standards for the E-reporting of transshipment declarations and transshipment notices, taking into consideration the requirements of CMM 2009-06 Annex I and Annex III.

Background

2. At WCPFC13 the Commission adopted *the standards, specifications and procedures for Electronic Reporting, which presently include E-reporting standards for operational catch and effort data* (WCPFC13 Summary Report paragraph 584 and Attachment T). It was intended that as additional E-reporting standards are adopted by the Commission, they would be incorporated as new attachments within the E-reporting standard, specifications and procedures. Appropriate amendments would subsequently be made to the cover document for the E-Reporting SSPs in WCPFC13 Summary Report Attachment T.
3. The Summary Report of the ERandEM Working Group second meeting (WCPFC-TCC12-2016-17) was also adopted by WCPFC13 (WCPFC13 Summary Report paragraph 583). One of the recommendations from the Working Group meeting in 2016, was for the Secretariat to “develop draft E-reporting standards for transshipment reporting requirements (particularly declarations, notification and observer) required under CMM 2009-06.
4. For the 2017 budget, WCPFC13 made provision to provide interim support for an ER-EM technical coordinator position at the Secretariat on the basis of the acknowledged need for the Secretariat to undertake critical work in this area. Funds were provided to support work by a consultant for part of the year, and the Secretariat was also tasked to explore options supplementing this with voluntary contributions (either financial or through secondments from CCMs and other sources). Since WCPFC13, the Secretariat has been working with a WCPFC member who has indicated an interest and ability to provide support to the Secretariat in the E-reporting area. At the time of writing this paper, the contractual issues for this supplementary support to the Secretariat were still being finalised.

5. In August 2017, the Secretariat engaged Mr Kim Duckworth on a consultancy basis primarily to assist the WCPFC Secretariat with scoping and developing a work plan for implementation of MCS/compliance E-reporting at the Secretariat. The scope of this work will be for CMM reporting that are presently received and data entered at the WCPFC Secretariat offices, particularly high seas transshipment notices and declarations, reporting in the event of VMS malfunction and high seas pocket reporting. The Secretariat will provide additional updates on the progress of the scoping and development of the proposed work plan for implementation of E-reporting at the Secretariat to TCC13.

Next Steps for Transshipment E-Reporting

6. One of the first outputs of the Secretariats work are the enclosed draft standards for the E-reporting of transshipment declarations and transshipment notices (**Attachment 1**). The development of this draft considered the WCPFC13 adopted E-Reporting SSPs for operational level catch and effort data, and the specific requirements of CMM 2009-06. This is the first opportunity that CCMs are being provided to review and provide comments on the draft standards.
7. The Secretariat also notes that there remains much additional work to determine the mechanism by which the WCPFC will receive transshipment e-reporting. The Secretariat intends to carry out internal work on this mechanism prior to March 2018. The standards for Transshipment E-reporting must be agreed before the Transshipment E-reporting system can be finalised.
8. Before March 2018, the WCPFC will make available on its website - examples of the proposed formats (XML, JSON & XLSX) for the e-reporting of Transshipment Declarations and Transshipment Notices.
9. Based on the comments received from CCMs at TCC13, the Secretariat intends to provide an update on the progress for the draft standards for transshipment E-reporting to WCPFC14.

Recommendation

10. TCC13 is invited to:
 - i) Consider and provide comments and feedback on the enclosed draft Standards for the E-reporting of Transshipment Declarations and Transshipment Notices (**Attachment 1**), and
 - ii) note the proposed next steps for implementation of transshipment E-reporting at the Secretariat.

DRAFT STANDARDS FOR THE E-REPORTING OF TRANSHIPMENT DECLARATIONS AND TRANSHIPMENT NOTICES

CONTENTS

1.INTRODUCTION	3
2.STANDARDS FOR THE E-REPORTING OF TRANSHIPMENT INFORMATION.....	5
3.OFFLOADING VESSEL TRANSHIPMENT DECLARATIONS	6
3.a Standards for the structure of new or amended e-reports.....	6
3.b Standards for the records and fields to be provided	7
3.c Standards for cancelling a previously submitted e-report.....	10
3.d Notes.....	10
4.RECEIVING VESSEL TRANSHIPMENT DECLARATIONS.....	11
4.a Standards for the structure of new or amended e-reports.....	11
4.b Standards for the records and fields to be provided	12
4.c Standards for cancelling a previously submitted e-report.....	16
4.d Notes.....	16
5.OFFLOADING VESSEL TRANSHIPMENT NOTICES	17
5.a Standards for the structure of new or amended e-reports.....	17
5.b Standards for the records and fields to be provided	18
5.c Standards for cancelling a previous e-report.....	21
5.d Notes.....	21
6.RECEIVING VESSEL TRANSHIPMENT NOTICES.....	22
6.a Standards for the structure of new or amended e-reports.....	22
6.b Standards for the records and fields to be provided	22
6.c Standards for cancelling a previous e-report.....	24
6.d Notes.....	24
7.STANDARDS FOR THE TRANSMISSION OF TRANSHIPMENT E-REPORTS.....	25
APPENDICES.....	26
APPENDIX 1 – FISHING GEAR CODES	26
APPENDIX 2 – DATE/TIME FORMAT.....	26
APPENDIX 3 – LOCATION CODES	27
APPENDIX 4 – PROCESSED STATE CODES.....	28
APPENDIX 5 – RFMO AREA CODES.....	28

1. INTRODUCTION

This document sets out the first draft of the standards for the provision of Transshipment Declarations and Transshipment Notices to the WCPFC through the mechanism of electronic reporting (e-reporting). CMM2009-06 defines the requirements for CCMs to supply Transshipment Declarations and Transshipment Notices to the Executive Director; and documents the information to be included in these. For the past eight years' the Commission has been receiving this transshipment information, mostly in the form of scanned documents submitted via email. These scanned documents are then data entered at the Commission. More recently the Commission has been investigating the options for implementing e-reporting for a range of the information sets that it receives. In an e-reporting scenario: data entry would occur at the vessel, or vessel's

agent, or CCM; then the information would then be supplied to the Commission in a format which could be loaded into the Commission's databases with minimal (ideally zero) human intervention. E-reporting has the potential to:

- Improve the quality of information received, because e-reporting makes it possible to do data quality checks at the source of the data
- Improve the timeliness of information availability, because there is no delay waiting for data entry
- Reduce costs for the Commission, by reducing the resources that the Commission must commit to data entry.

Standards are a critical element of any e-reporting infrastructure. For e-reporting to function efficiently, the data sent by the transmitting computer must be in the exact format that the receiving computer is expecting. Where this does not occur, human intervention will be required to re-format the data before it can be loaded. For this reason, e-reporting standards are by their nature: technical, detailed and leaving little scope for ambiguity.

Note that:

- a) These standards do not obligate any vessel, agent or CCM to use e-reporting for Transshipment Declarations and Transshipment Notices. Vessels, agents and CCMs may continue to manually report in accordance with CMM2009-06. Although, if the benefits of e-reporting are to be fully realised, then widespread uptake would be required. It should be anticipated that after some transitional period (defined by the Commission) then e-reporting of Transshipment Declarations and Transshipment Notices would become mandatory.
- b) These standards do not amend the timeframes for the provision of Transshipment Declarations and Transshipment Notices, as defined in CMM2009-06.
- c) These standards do not amend who is required to provide Transshipment Declarations and Transshipment Notices, as defined in CMM2009-06.
- d) These standards do not amend the spatial or temporal resolution at which transshipments are reported, as defined in CMM2009-06.
- e) Annex 1 of CMM2009-06 is silent on the units of measure for fish product, while Annex 3 requests the tonnage of product to be transhipped, while being silent on the number of decimal places to which tonnage should be reported. These standards propose that kilograms, rounded to the nearest whole number, be used as the unit of measure for the e-reporting of Transshipment Declarations and Transshipment Notices.
- f) These standards are primarily focused on a scenario where data is provided: one event at a time (not aggregated), in near real-time, via computer-to-computer transmission. In this sense, they are unlike the recently adopted E-Reporting Standards for Operational Logsheets, as the logsheet information is typically aggregated for a year then supplied in bulk.
- g) This document includes standards for (1) initially submitting a transshipment declaration or notice and (2) subsequently amending that declaration or notice and (3) cancelling a previous declaration or notice.
- h) Generally, the fields of information specified in these standards are the same as those documented in Annex I and Annex III of CMM2009-06. However, some additional information is required to enable the efficient operation of e-reporting. These instances are clearly identified, and the rationale behind each is documented in the standards that follow. In most cases this additional information could be generated automatically by the sender's computer. These standards do not request any additional information of an operational nature.

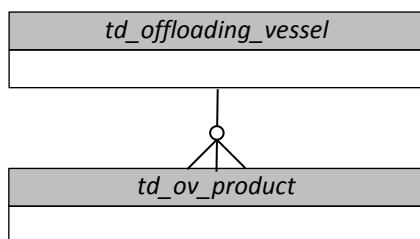
- i) One of the additional items of information requested is a contact email address for the submitter. Upon the receipt of a transshipment declaration or notice, the WCPFC would send a confirmation email to the contact email address provided.
- j) These standards propose that the collection of some operational data, as required by Annex I and Annex III of CMM2009-06, is waived in the case of information submitted via e-reporting. This is specifically the case where e-reporting offers the opportunity to collect equivalent information without double data entry. These proposals are documented in the sections 3.d, 4.d, 5.d and 6.d.
- k) Annex I and Annex III of CMM2009-06 require vessels to supply their WCPFC Identification Number (WIN) when reporting transshipments. The WIN is assigned by the Flag State and changes whenever the vessel is re-flagged. These standards propose that, for e-reporting Transshipment Declarations and Transshipment Notices, the VID number assigned to a vessel in the WCPFC Record of Fishing Vessels is used instead of the WIN. The WCPFC VID number does not change when a vessel is re-flagged, and is a more stable/reliable means of identifying vessels when e-reporting. Note that the same approach was adopted by WCPFC13 for identifying vessels in the e-reporting of Operational Logsheets.

2. STANDARDS FOR THE E-REPORTING OF TRANSHIPMENT INFO

- a) Where a vessel, agent or CCM elects to use e-reporting to comply with paragraph 10 of CMM2009-06; the declaration for the offloading vessel must comply with the standards contained in sections 3.a, 3.b, 3.c and 7 of this document.
- b) Where a vessel, agent or CCM elects to use e-reporting to comply with paragraph 10 of CMM2009-06; the declaration for the receiving vessel must comply with the standards contained in sections 4.a, 4.b, 4.c and 7 of this document.
- c) Where a vessel, agent or CCM elects to use e-reporting to comply with paragraph 35 of CMM2009-06; the notice for the offloading vessel must comply with the standards contained in sections 5.a, 5.b, 5.c and 7 of this document.
- d) Where a vessel, agent or CCM elects to use e-reporting to comply with paragraph 35 of CMM2009-06; the notice for the receiving vessel must comply with the standards contained in sections 6.a, 6.b, 6.c and 7 of this document.

3. OFFLOADING VESSEL TRANSHIPMENT DECLARATIONS

3.a Standards for the structure of new or amended e-reports



For each Offloading Vessel Transhipment Declaration, there must be:

- one *td_offloading_vessel* record
- one *td_ov_product* record for each combination of Species / Processed State / Fresh or Frozen / Location of Catch product that was transhipped. For example, the information shown below would be represented by five *td_ov_product* records.

Species	Processed State	Fresh or Frozen	Location of Catch	Quantity
ALB	Gutted & Headed	Fresh	Cook Islands EEZ	1250kg
ALB	Gilled, Gutted & Tailed	Fresh	Cook Islands EEZ	525kg
ALB	Gilled, Gutted & Tailed	Frozen	Cook Islands EEZ	4829kg
ALB	Gilled, Gutted & Tailed	Frozen	WCPFC High Seas	1175kg
BET	Gilled, Gutted & Tailed	Frozen	WCPFC High Seas	3678kg

Any Offloading Vessel Transhipment Declaration must be able to be uniquely identified by concatenating:

- the vessel's WCPFC VID number; and
- the date and time that the declaration was submitted.

The *td_ov_product* records for a single transhipment, must be able to be logically linked to the *td_offloading_vessel* record for the same transhipment, using the concatenated vessel's VID number and declaration datetime.

3.b Standards for the records and fields to be provided

RECORD NAME: <i>td_offloading_vessel</i>			
All of the fields listed below are required in each record. No field may contain missing or null values.			
Information Required	Field Name	Field Format	Notes
The Offloading Vessel's WCPFC Identification Number (VID)	<i>off_vid</i>	INTEGER Example: 1867	Reference: CMM2009-06, annex 1, para 2; with the WIN being replaced by the VID. Validation: Must be a valid VID, on the date of transshipment, in the WCPFC Record of Fishing Vessels.
The Offloading Vessel's Name	<i>off_vessel</i>	VARCHAR(64) Example: <i>Lucky Fisher III</i>	Reference: CMM2009-06, annex 1, para 2. Validation: Must be the vessel name which, in the WCPFC Record of Fishing Vessels, corresponds to the <i>off_vid</i> provided.
The Receiving Vessel's WCPFC Identification Number (VID)	<i>rec_vid</i>	INTEGER Example: 644	Reference: CMM2009-06, annex 1, para 3; with the WIN being replaced by the VID. Validation: Must be a valid VID, on the date of transshipment, in the WCPFC Record of Fishing Vessels.
The Receiving Vessel's name	<i>rec_vessel</i>	VARCHAR(64) Example: <i>Super Hauler 2</i>	Reference: CMM2009-06, annex 1, para 3. Validation: Must be the vessel name which, in the WCPFC Record of Fishing Vessels, corresponds to the <i>rec_vid</i> provided.
The fishing gear used to take the fish	<i>fishing_gear</i>	VARCHAR(16), Uppercase If more than one type of gear was used, then separate the list using dashes. Example: <i>LLS-LLD</i>	Reference: CMM2009-06, annex 1, para 4. Validation: Must be a valid fishing gear code as found in Appendix 1, or list of fishing gear codes separated by dashes.
The date on which the transshipment started	<i>trans_date</i>	VARCHAR(11) ISO8601 – Date only format. See Appendix 2. Example: <i>2016-11-25</i>	Reference: CMM2009-06, annex 1, para 9. Validation: Must be a date in the recent past.
The location at which the transshipment started	<i>trans_loc</i>	VARCHAR(8), Uppercase Example: <i>WCPFC-HS</i>	Reference: CMM2009-06, annex 1, para 9. Validation: Must be a valid location code as found in Appendix 3.
The latitude at which the transshipment started	<i>trans_latitude</i>	CHAR(5) ISO6709, to the nearest 0.1 degree ±DD.D	Reference: CMM2009-06, annex 1, para 9. Validation: Must be a valid latitude.

RECORD NAME: *td_offloading_vessel*

All of the fields listed below are required in each record. No field may contain missing or null values.

Information Required	Field Name	Field Format	Notes
		Example for Pohnpei Airport: +07.0	
The longitude at which the transshipment started	<i>trans_longitude</i>	CHAR(6) ISO6709, to the nearest 0.1 degree ±DDD.D Example for Pohnpei Airport: +158.2	Reference: CMM2009-06, annex 1, para 9. Validation: (1) Must be a valid longitude and (2) Should, when considered along with the <i>trans_latitude</i> , represent a location that is at sea and within the <i>trans_loc</i> .
The name of the WCPFC observer	<i>obs_name</i>	VARCHAR(64)	Reference: CMM2009-06, annex 1, para 10. Validation: Must not be blank. Use “No Observer” where no observer was present.
Whether this is a new transshipment declaration, or an amendment to a previous transshipment declaration	<i>trans_id</i>	CHAR(16) Example: <i>New-Transshipment</i>	NEW - Rationale: Needed to allow already submitted transshipment declarations to be amended. Validation: In the case of new transshipment declarations, must be “New-Transshipment”. In the case of amendments to a previous transshipment declaration, must be the Transshipment ID that the WCPFC sent to the contact email address when confirming receipt of the declaration.
The date and time that the declaration was submitted	<i>submit_time</i>	VARCHAR(17) ISO 8601 – Date and time without seconds. See Appendix 2. Example: <i>2016-11-25T14:46</i>	NEW - Rationale: Needed (along with the <i>off_vid</i> field) to allow <i>td_offloading_vessel</i> records and <i>td_ov_product</i> records to be correctly linked. Validation: Must be a recent earlier date/time. Note: Could be automatically generated by the submitters computer system at the moment that the declaration was sent.
The number of transhipped product records that are being submitted	<i>product_count</i>	INTEGER Example: 25 Must be 0 if no product was transhipped.	NEW - Rationale: Needed to ensure that product transhipped records have not been lost or duplicated in transmission. Note: Could be automatically generated by the submitters computer system at the moment that the declaration was sent.
A contact email address	<i>contact_email</i>	VARCHAR(50) Example: <i>a.fisher@gmail.com</i>	NEW - Rationale: An email address that WCPFC should use to (1) confirm receipt of this declaration and (2) contact if there are any problems with the quality / completeness of this declaration. Validation: Must be a valid email address.

RECORD NAME: *td_ov_product*

All of the fields listed below are required in each record. No field may contain missing or null values.

Information Required	Field Name	Field Format	Notes
The Offloading Vessel's WCPFC Identification Number (VID)	<i>off_vid</i>	INTEGER Example: 1867	DUPLICATE - Rationale: Needed (along with the <i>submit_time</i> field) to allow <i>td_offloading_vessel</i> records and <i>td_ov_product</i> records to be correctly linked. Validation: Must have a matching entry in the <i>td_offloading_vessel</i> record.
The date and time that the declaration was submitted	<i>submit_time</i>	VARCHAR(17) ISO 8601 – Date and time without seconds. See Appendix 2. Example: 2016-11-25T14:46	NEW & DUPLICATE - Rationale: Needed (along with the <i>off_vid</i> field) to allow <i>td_offloading_vessel</i> records and <i>td_ov_product</i> records to be correctly linked. Validation: Must have a matching entry in the <i>td_offloading_vessel</i> record.
The species that was transhipped	<i>species</i>	CHAR(3), Uppercase The three-letter FAO species code for the species. Example: <i>SKJ</i>	Reference: CMM2009-06, annex 1, para 5. Validation: Must be a valid three-letter FAO species code - www.fao.org/fishery/collection/asfis/en
The processed state of the transhipped fish	<i>processed_state</i>	CHAR(2), Uppercase Example: <i>WH</i>	Reference: CMM2009-06, annex 1, para 5. Validation: Must be a valid processed state code as found in Appendix 4.
Whether the transhipped fish was fresh or frozen	<i>fresh_frozen</i>	VARCHAR(6), containing the string "Fresh" or "Frozen"	Reference: CMM2009-06, annex 1, para 6.
The geographic location of the catch	<i>catch_loc</i>	VARCHAR(8), Uppercase Example: <i>WCPFC-HS</i>	Reference: CMM2009-06, annex 1, para 8. Validation: Must be a valid location code as found in Appendix 3.
The quantity of the product that was transhipped	<i>quantity_product</i>	INTEGER Example: 3927	Reference: CMM2009-06, annex 1, para 5. The weight of product transhipped, measured in kilograms, and rounded to the nearest kg.

3.c Standards for cancelling a previously submitted e-report

<i>td_ov_cancel</i>

It will be possible to use e-reporting to cancel a previously submitted Offloading Vessel Transhipment Declaration. For each Offloading Vessel Transhipment Declaration cancellation, there must be one *td_ov_cancel* record.

RECORD NAME: <i>td_ov_cancel</i>			
All of the fields listed below are required in each record. No field may contain missing or null values.			
Information Required	Field Name	Field Format	Notes
The Offloading Vessel's WCPFC Identification Number (VID)	<i>off_vid</i>	INTEGER Example: 1867	Validation: Must be a valid VID in the WCPFC Record of Fishing Vessels.
The WCPFC Transhipment ID for the Offloading Vessel Transhipment Declaration that is being cancelled	<i>trans_id</i>	CHAR(16) Example: <i>HPOU6685WDXZ2309</i>	Rationale: Needed to allow already submitted transhipment declarations to be amended. Validation: Must be a valid WCPFC Transhipment ID, for a transhipment declaration that had previously been made by the offloading vessel. Note: This ID will have been sent by the WCPFC to the contact email address when the Transhipment Declaration was first submitted.
A contact email address	<i>contact_email</i>	VARCHAR(50) Example: <i>a.fisher@gmail.com</i>	Rationale: An email address that WCPFC should use to (1) confirm receipt of this cancellation and (2) contact if there are any problems with the quality / completeness of this cancellation. Validation: Must be a valid email address.

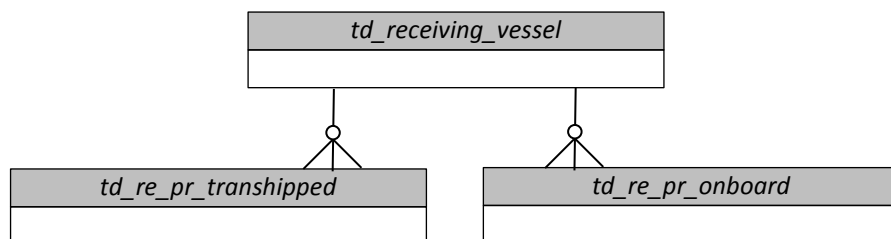
3.d Notes

For the e-reporting of Transhipment Declarations by Offloading Vessels:

- the requirement for the offloading vessel to supply its WIN (CMM2009-06, annex 1, para 2) would be replaced by a requirement to supply its VID.
- the requirement for the offloading vessel to supply a "Unique Document Identifier" (CMM2009-06, annex 1, para 1) would be waived.
- the requirement for the offloading vessel to supply the signature of a WCPFC observer (CMM2009-06, annex 1, para 10) would be waived.
- the requirement for the offloading vessel to supply the quantity of product already on board the receiving vessel (CMM2009-06, annex 1, para 11) would be waived. The receiving vessel would still be required to supply this information.

4. RECEIVING VESSEL TRANSHIPMENT DECLARATIONS

4.a Standards for the structure of new or amended e-reports



For each Receiving Vessel Transhipment Declaration, there must be:

- one *td_receiving_vessel* record
- one *td_re_pr_transhipped* record for each combination of Species / Processed State / Fresh or Frozen product that was transhipped. For example, the information shown below would be represented by four *td_re_pr_transhipped* records.

Species	Processed State	Fresh or Frozen	Quantity
ALB	Gutted & Headed	Fresh	1250kg
ALB	Gilled, Gutted & Tailed	Fresh	525kg
ALB	Gilled, Gutted & Tailed	Frozen	6004kg
BET	Gilled, Gutted & Tailed	Frozen	3678kg

- one *td_re_pr_onboard* record for each combination of Species / RFMO Of Origin product that was on-board the receiving vessel before the transhipment started. For example, the information shown below would be represented by three *td_re_pr_onboard* records.

Species	RFMO	Quantity
ALB	WCPFC	11201kg
ALB	IOTC	3020kg
BET	IOTC	3678kg

Note on interpreting the CMM - CMM2009-06, annex 1, para 11 requires receiving vessels to report “the quantity of product already on board the receiving vessel”, but is silent on whether the processed state of this product is required. This is open to two interpretations (1) the earlier definition of “product” contained in CMM2009-06, annex 1, para 5 applies or (2) no information on product state is required. In drafting this standard the second interpretation has been used, but this should be clarified before the standard is finalised.

Any Receiving Vessel Transhipment Declaration must be able to be uniquely identified by concatenating:

- the vessel’s WCPFC VID number; and
- the date and time that the declaration was submitted.

The *td_re_pr_transhipped* and *td_re_pr_onboard* records for a single transhipment, must be able to be logically linked to the *td_receiving_vessel* record for the same transhipment, using the concatenated receiving vessel’s VID number and declaration datetime.

4.b Standards for the records and fields to be provided

RECORD NAME: <i>td_receiving_vessel</i>			
All of the fields listed below are required in each record. No field may contain missing or null values.			
Information Required	Field Name	Field Format	Notes
The Offloading Vessel's WCPFC Identification Number (VID)	<i>off_vid</i>	INTEGER Example: 1867	Reference: CMM2009-06, annex 1, para 2; with the WIN being replaced by the VID. Validation: Must be a valid VID, on the date of transshipment, in the WCPFC Record of Fishing Vessels.
The Offloading Vessel's Name	<i>off_vessel</i>	VARCHAR(64) Example: <i>Lucky Fisher III</i>	Reference: CMM2009-06, annex 1, para 2. Validation: Must be the vessel name which, in the WCPFC Record of Fishing Vessels, corresponds to the <i>off_vid</i> provided.
The Receiving Vessel's WCPFC Identification Number (VID)	<i>rec_vid</i>	INTEGER Example: 644	Reference: CMM2009-06, annex 1, para 3; with the WIN being replaced by the VID. Validation: Must be a valid VID, on the date of transshipment, in the WCPFC Record of Fishing Vessels.
The Receiving Vessel's Name	<i>rec_vessel</i>	VARCHAR(64) Example: <i>Super Hauler 2</i>	Reference: CMM2009-06, annex 1, para 3. Validation: Must be the vessel name which, in the WCPFC Record of Fishing Vessels, corresponds to the <i>rec_vid</i> provided.
The date on which the transshipment started	<i>trans_date</i>	VARCHAR(11) ISO8601 – Date only format. See Appendix 2. Example: 2016-11-25	Reference: CMM2009-06, annex 1, para 9. Validation: Must be a date in the recent past.
The location at which the transshipment started	<i>trans_loc</i>	VARCHAR(8), Uppercase Example: <i>WCPFC-HS</i>	Reference: CMM2009-06, annex 1, para 9. Validation: Must be a valid location code as found in Appendix 3.
The latitude at which the transshipment started	<i>trans_latitude</i>	CHAR(5) ISO6709, to the nearest 0.1 degree ±DD.D Example for Pohnpei Airport: +07.0	Reference: CMM2009-06, annex 1, para 9. Validation: Must be a valid latitude.
The longitude at which the transshipment started	<i>trans_longitude</i>	CHAR(6) ISO6709, to the nearest 0.1 degree ±DDD.D	Reference: CMM2009-06, annex 1, para 9. Validation: (1) Must be a valid longitude and (2) Should, when considered along with the <i>trans_latitude</i> , represent a location that is at sea and within the <i>trans_loc</i> .

RECORD NAME: <i>td_receiving_vessel</i>			
All of the fields listed below are required in each record. No field may contain missing or null values.			
Information Required	Field Name	Field Format	Notes
		Example for Pohnpei Airport: +158.2	
The name of the WCPFC observer	<i>obs_name</i>	VARCHAR(64)	Reference: CMM2009-06, annex 1, para 10. Validation: Must not be blank. Use “No Observer” where no observer was present.
Whether this is a new transshipment declaration, or an amendment to a previous transshipment declaration	<i>trans_id</i>	CHAR(16) Example: <i>New-Transshipment</i>	NEW - Rationale: Needed to allow already submitted transshipment declarations to be amended. Validation: In the case of new transshipment declarations, must be “New-Transshipment”. In the case of amendments to a previous transshipment declaration, must be the Transshipment ID that the WCPFC sent to the contact email address when confirming receipt of the declaration.
The date and time that the declaration was submitted	<i>submit_time</i>	VARCHAR(17) ISO 8601 – Date and time without seconds. See Appendix 2. Example: <i>2016-11-25T14:46</i>	NEW - Rationale: Needed (along with the <i>off_vid</i> field) to allow <i>td_receiving_vessel</i> , <i>td_re_pr_transhipped</i> and <i>td_re_pr_onboard</i> records to be correctly linked. Validation: Must be a recent earlier date/time. Note: Could be automatically generated by the submitters computer system at the moment that the declaration was sent.
The number of transhipped product records that are being submitted	<i>product_count</i>	INTEGER Example: 25 Must be 0 if no product was transhipped.	NEW - Rationale: Needed to ensure that product transhipped records have not been lost or duplicated in transmission. Note: Could be automatically generated by the submitters computer system at the moment that the declaration was sent.
The number of product already on-board records that are being submitted	<i>onboard_count</i>	INTEGER Example: 49 Must be 0 if no product was on-board before the transshipment started.	NEW - Rationale: Needed to ensure that product already on-board records have not been lost or duplicated in transmission. Note: Could be automatically generated by the submitters computer system at the moment that the declaration was sent.
A contact email address	<i>contact_email</i>	VARCHAR(50) Example: <i>a.carrier@gmail.com</i>	NEW - Rationale: An email address that WCPFC should use to (1) confirm receipt of this declaration and (2) contact if there are any problems with the quality / completeness of this declaration. Validation: Must be a valid email address.

RECORD NAME: *td_re_pr_transhipped*

All of the fields listed below are required in each record. No field may be missing or null.

Information Required	Field Name	Field Format	Notes
The Receiving Vessel's WCPFC Identification Number (VID)	<i>rec_vid</i>	INTEGER Example: 644	DUPLICATE - Rationale: Needed (along with the <i>submit_time</i> field) to allow <i>td_receiving_vessel</i> records and <i>td_re_pr_transhipped</i> records to be correctly linked. Validation: Must have a matching entry in the <i>td_receiving_vessel</i> record.
The date and time that the declaration was submitted	<i>submit_time</i>	VARCHAR(17) ISO 8601 – Date and time without seconds. See Appendix 2. Example: 2016-11-25T14:46	NEW & DUPLICATE - Rationale: Needed (along with the <i>rec_vid</i> field) to allow <i>td_receiving_vessel</i> records and <i>td_re_pr_transhipped</i> records to be correctly linked. Validation: Must have a matching entry in the <i>td_receiving_vessel</i> record.
The species that was transhipped	<i>species</i>	CHAR(3), Uppercase The three-letter FAO species code for the species. Example: <i>SKJ</i>	Reference: CMM2009-06, annex 1, para 5. Validation: Must be a valid three-letter FAO species code - www.fao.org/fishery/collection/asfis/en
The processed state of the transhipped fish	<i>processed_state</i>	CHAR(2), Uppercase Example: <i>WH</i>	Reference: CMM2009-06, annex 1, para 5. Validation: Must be a valid processed state code as found in Appendix 4.
Whether the transhipped fish was fresh or frozen	<i>fresh_frozen</i>	VARCHAR(6), containing the string "Fresh" or "Frozen"	Reference: CMM2009-06, annex 1, para 6.
The quantity of the product that was transhipped	<i>quantity_product</i>	INTEGER Example: 3927	Reference: CMM2009-06, annex 1, para 5. The weight of product transhipped, measured in kilograms, and rounded to the nearest kg.

RECORD NAME: *td_re_pr_onboard*

All of the fields listed below are required in each record. No field may be missing or null.

Information Required	Field Name	Field Format	Notes
The Receiving Vessel's WCPFC Identification Number (VID)	<i>rec_vid</i>	INTEGER Example: 644	DUPLICATE - Rationale: Needed (along with the <i>submit_time</i> field) to allow <i>td_receiving_vessel</i> records and <i>td_re_pr_onboard</i> records to be correctly linked. Validation: Must have a matching entry in the <i>td_receiving_vessel</i> record.
The date and time that the declaration was submitted	<i>submit_time</i>	VARCHAR(17) ISO 8601 – Date and time without seconds. See Appendix 2. Example: 2016-11-25T14:46	NEW & DUPLICATE - Rationale: Needed (along with the <i>rec_vid</i> field) to allow <i>td_receiving_vessel</i> records and <i>td_ov_product</i> records to be correctly linked. Validation: Must have a matching entry in the <i>td_receiving_vessel</i> record.
The species of the product that was on-board before the transshipment started	<i>species</i>	CHAR(3), Uppercase The three-letter FAO species code for the species. Example: <i>SKJ</i>	Reference: CMM2009-06, annex 1, para 11. Validation: Must be a valid three-letter FAO species code - www.fao.org/fishery/collection/asfis/en
The geographic origin (RFMO) of the product that was on-board before the transshipment started	<i>origin_loc</i>	VARCHAR(5), Uppercase Example: <i>WCPFC</i>	Reference: CMM2009-06, annex 1, para 11. Validation: Must be a valid RFMO Area code as found in Appendix 5.
The quantity of the product that was on-board before the transshipment started	<i>quantity_product</i>	INTEGER Example: 3927	Reference: CMM2009-06, annex 1, para 11. The weight of product transhipped, measured in kilograms, and rounded to the nearest kg.

4.c Standards for cancelling a previously submitted e-report

<i>td_re_cancel</i>

It will be possible to use e-reporting to cancel a previously submitted Receiving Vessel Transhipment Declaration. For each Receiving Vessel Transhipment Declaration cancellation, there must be one *td_re_cancel* record.

RECORD NAME: <i>td_re_cancel</i>			
All of the fields listed below are required in each record. No field may contain missing or null values.			
Information Required	Field Name	Field Format	Notes
The Receiving Vessel's WCPFC Identification Number (VID)	<i>rec_vid</i>	INTEGER Example: 1867	Validation: Must be a valid VID in the WCPFC Record of Fishing Vessels.
The WCPFC Transhipment ID for the Receiving Vessel Transhipment Declaration that is being cancelled	<i>trans_id</i>	CHAR(16) Example: <i>FGYH7892ELPU3087</i>	Rationale: Needed to allow already submitted transhipment declarations to be amended. Validation: Must be a valid WCPFC Transhipment ID, for a transhipment declaration that had previously been made by the receiving vessel. Note: Will have been sent by the WCPFC to the contact email address when the Transhipment Declaration was first submitted.
A contact email address	<i>contact_email</i>	VARCHAR(50) Example: <i>a.carrier@gmail.com</i>	Rationale: An email address that WCPFC should use to (1) confirm receipt of this cancellation and (2) contact if there are any problems with the quality / completeness of this cancellation. Validation: Must be a valid email address.

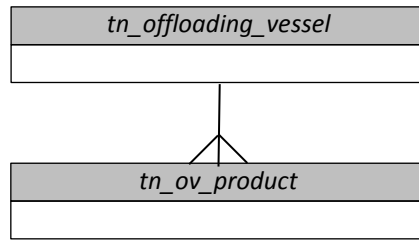
4.d Notes

For the e-reporting of Transhipment Declarations by Receiving Vessels:

1. the requirement for the receiving vessel to supply its WIN (CMM2009-06, annex 1, para 2) would be replaced by a requirement to supply its VID.
2. the requirement for the receiving vessel to supply a "Unique Document Identifier" (CMM2009-06, annex 1, para 1) would be waived.
3. the requirement for the receiving vessel to supply the signature of a WCPFC observer (CMM2009-06, annex 1, para 10) would be waived.
4. the requirement for the receiving vessel to supply the fishing gear used to take the fish (CMM2009-06, annex 1, para 4) would be waived. The offloading vessel would still be required to supply this information.
5. the requirement for the receiving vessel to supply the location that product transhipped was taken in (CMM2009-06, annex 1, para 8) would be waived. The offloading vessel would still be required to supply this information.

5. OFFLOADING VESSEL TRANSHIPMENT NOTICES

5.a Standards for the structure of new or amended e-reports



For each Offloading Vessel Transhipment Notice, there must be:

- one *tn_offloading_vessel* record
- one *tn_ov_product* record for each combination of Species / Processed State / Fresh or Frozen / Location of Catch product that will be transhipped. For example, the information shown below would be represented by four *tn_ov_product* records.

Species	Processed State	Location of Catch	Quantity
<i>ALB</i>	<i>Gutted & Headed</i>	<i>Cook Islands EEZ</i>	<i>1250kg</i>
<i>ALB</i>	<i>Gilled, Gutted & Tailed</i>	<i>Cook Islands EEZ</i>	<i>4829kg</i>
<i>ALB</i>	<i>Gilled, Gutted & Tailed</i>	<i>WCPFC High Seas</i>	<i>1175kg</i>
<i>BET</i>	<i>Gilled, Gutted & Tailed</i>	<i>WCPFC High Seas</i>	<i>3678kg</i>

Any Offloading Vessel Transhipment Notice must be able to be uniquely identified by concatenating:

- the vessel's WCPFC VID number; and
- the date and time that the notice was submitted.

The *tn_ov_product* records for a single transhipment must be able to be logically linked to the *tn_offloading_vessel* record for the same transhipment, using the concatenated offloading vessel's VID number and date / time that the notice was submitted.

5.b Standards for the records and fields to be provided

RECORD NAME: <i>tn_offloading_vessel</i>			
All of the fields listed below are required in each record. No field may contain missing or null values.			
Information Required	Field Name	Field Format	Notes
The Offloading Vessel's WCPFC Identification Number (VID)	<i>off_vid</i>	INTEGER Example: 1867	Reference: CMM2009-06, annex 3, para 1; with the WIN being replaced by the VID. Validation: Must be a valid VID, on the date of transshipment, in the WCPFC Record of Fishing Vessels.
The Offloading Vessel's Name	<i>off_vessel</i>	VARCHAR(64) Example: <i>Lucky Fisher III</i>	Reference: CMM2009-06, annex 3, para 1. Validation: Must be the vessel name which, in the WCPFC Record of Fishing Vessels, corresponds to the <i>off_vid</i> provided.
The Receiving Vessel's WCPFC Identification Number (VID)	<i>rec_vid</i>	INTEGER Example: 644	Reference: CMM2009-06, annex 3, para 2; with the WIN being replaced by the VID. Validation: Must be a valid VID, on the date of transshipment, in the WCPFC Record of Fishing Vessels.
The Receiving Vessel's Name	<i>rec_vessel</i>	VARCHAR(64) Example: <i>Super Hauler 2</i>	Reference: CMM2009-06, annex 3, para 2. Validation: Must be the vessel name which, in the WCPFC Record of Fishing Vessels, corresponds to the <i>rec_vid</i> provided.
The date on which the transshipment is proposed to start	<i>prop_date</i>	VARCHAR(11) ISO8601 – Date only format. See Appendix 2. Example: 2016-11-25	Reference: CMM2009-06, annex 3, para 5. Validation: Must be a date in the near future.
The location at which the transshipment is proposed to start	<i>prop_loc</i>	VARCHAR(8), Uppercase Example: <i>WCPFC-HS</i>	Reference: CMM2009-06, annex 3, para 5. Validation: Must be a valid location code as found in Appendix 3.
The latitude at which the transshipment is proposed to start	<i>prop_latitude</i>	CHAR(5) ISO6709, to the nearest 0.1 degree ±DD.D Example for Pohnpei Airport: +07.0	Reference: CMM2009-06, annex 3, para 5. Validation: Must be a valid latitude.
The longitude at which the transshipment is	<i>prop_longitude</i>	CHAR(6) ISO6709, to the nearest 0.1 degree	Reference: CMM2009-06, annex 3, para 5. Validation: (1) Must be a valid longitude and (2) Should, when considered along with the

RECORD NAME: *tn_offloading_vessel*

All of the fields listed below are required in each record. No field may contain missing or null values.

Information Required	Field Name	Field Format	Notes
proposed to start		±DDD.D Example for Pohnpei Airport: +158.2	<i>prop_latitude</i> , represent a location that is at sea and within the <i>prop_loc</i> .
Whether this is a new transshipment notice, or an amendment to a previous transshipment declaration	<i>trans_id</i>	CHAR(16) Example: <i>New-Transshipment</i>	NEW - Rationale: Needed to allow already submitted transshipment declarations to be amended. Validation: In the case of new transshipment notices, must be "New-Transshipment". In the case of amendments to a previous transshipment notice, must be the Transshipment ID that the WCPFC sent to the contact email address when confirming receipt of the transshipment notice.
The date and time that the notice was submitted	<i>submit_time</i>	VARCHAR(17) ISO 8601 – Date and time without seconds. See Appendix 2. Example: <i>2016-11-25T14:46</i>	NEW - Rationale: Needed (along with the <i>off_vid</i> field) to allow <i>tn_offloading_vessel</i> records and <i>tn_ov_product</i> records to be correctly linked. Validation: Must be a recent earlier date/time. Note: Could be automatically generated by the submitters computer system at the moment that the declaration was sent.
The number of transhipped product records that are being submitted	<i>product_count</i>	INTEGER Example: 25	NEW - Rationale: Needed to ensure that product to be transhipped records have not been lost or duplicated in transmission. Note: Could be automatically generated by the submitters computer system at the moment that the declaration was sent.
A contact email address	<i>contact_email</i>	VARCHAR(50) Example: <i>a.fisher@gmail.com</i>	NEW - Rationale: An email address that WCPFC should use to (1) confirm receipt of this notice and (2) contact if there are any problems with the quality / completeness of this notice. Validation: Must be a valid email address.

RECORD NAME: *tn_ov_product*

All of the fields listed below are required in each record. No field may contain missing or null values.

Information Required	Field Name	Field Format	Notes
The Offloading Vessel's WCPFC Identification Number (VID)	<i>off_vid</i>	INTEGER Example: 1867	DUPLICATE - Rationale: Needed (along with the <i>submit_time</i> field) to allow <i>tn_offloading_vessel</i> records and <i>tn_ov_product</i> records to be correctly linked. Validation: Must have a matching entry in the <i>tn_offloading_vessel</i> record.
The date and time that the notice was submitted	<i>submit_time</i>	VARCHAR(17) ISO 8601 – Date and time without seconds. See Appendix 2. Example: 2016-11-25T14:46	NEW & DUPLICATE - Rationale: Needed (along with the <i>off_vid</i> field) to allow <i>td_offloading_vessel</i> records and <i>td_ov_product</i> records to be correctly linked. Validation: Must have a matching entry in the <i>td_offloading_vessel</i> record.
The species of the product that will be transhipped	<i>species</i>	CHAR(3), Uppercase The three-letter FAO species code for the species. Example: <i>SKJ</i>	Reference: CMM2009-06, annex 3, para 3. Validation: Must be a valid three-letter FAO species code - www.fao.org/fishery/collection/asfis/en
The processed state for the product that will be transhipped	<i>processed_state</i>	CHAR(2), Uppercase Example: <i>WH</i>	Reference: CMM2009-06, annex 3, para 3. Validation: Must be a valid processed state code as found in Appendix 4.
The geographic location of the catch	<i>catch_loc</i>	VARCHAR(8), Uppercase Example: <i>WCPFC-HS</i>	Reference: CMM2009-06, annex 3, para 6. Validation: Must be a valid location code as found in Appendix 3.
The quantity of the product that will be transhipped	<i>quantity_product</i>	INTEGER Example: 3927	Reference: CMM2009-06, annex 3, para 4. The weight of product transhipped, measured in kilograms, and rounded to the nearest kg.

5.c Standards for cancelling a previous e-report

<i>tn_ov_cancel</i>

It will be possible to use e-reporting to cancel a previously submitted Offloading Vessel Transhipment Notice. For each Offloading Vessel Transhipment Notice cancellation, there must be one *tn_ov_cancel* record.

RECORD NAME: <i>tn_ov_cancel</i>			
All of the fields listed below are required in each record. No field may contain missing or null values.			
Information Required	Field Name	Field Format	Notes
The Offloading Vessel's WCPFC Identification Number (VID)	<i>off_vid</i>	INTEGER Example: 1867	Validation: Must be a valid VID in the WCPFC Record of Fishing Vessels.
The WCPFC Transhipment ID for the Offloading Vessel Transhipment Notice that is being cancelled	<i>trans_id</i>	CHAR(16) Example: <i>FGYH7892ELPU3087</i>	Rationale: Needed to allow already submitted transhipment notices to be amended. Validation: Must be a valid WCPFC Transhipment ID, for a transhipment notice that had previously been made by the offloading vessel. Note: Will have been sent by the WCPFC to the contact email address when the Transhipment Notice was first submitted.
A contact email address	<i>contact_email</i>	VARCHAR(50) Example: <i>a.fisher@gmail.com</i>	Rationale: An email address that WCPFC should use to (1) confirm receipt of this cancellation and (2) contact if there are any problems with the quality / completeness of this cancellation. Validation: Must be a valid email address.

5.d Notes

For the e-reporting of Transhipment Notices by Offloading Vessels:

- the requirement for the offloading vessel to supply its WIN (CMM2009-06, annex 3, para 1) would be replaced by a requirement to supply its VID.

6. RECEIVING VESSEL TRANSHIPMENT NOTICES

6.a Standards for the structure of new or amended e-reports

<i>tn_receiving_vessel</i>

For each Receiving Vessel Transhipment Notice, there must be one *tn_receiving_vessel* record.

Any Receiving Vessel Transhipment Notice must be able to be uniquely identified by concatenating:

- the vessel's WCPFC VID number; and
- the date and time that the notice was submitted.

6.b Standards for the records and fields to be provided

RECORD NAME: <i>tn_receiving_vessel</i>			
All of the fields listed below are required in each record. No field may contain missing or null values.			
Information Required	Field Name	Field Format	Notes
The Offloading Vessel's WCPFC Identification Number (VID)	<i>off_vid</i>	INTEGER Example: 1867	Reference: CMM2009-06, annex 3, para 1; with the WIN being replaced by the VID. Validation: Must be a valid VID, on the date of transhipment, in the WCPFC Record of Fishing Vessels.
The Offloading Vessel's Name	<i>off_vessel</i>	VARCHAR(64) Example: <i>Lucky Fisher III</i>	Reference: CMM2009-06, annex 3, para 1. Validation: Must be the vessel name which, in the WCPFC Record of Fishing Vessels, corresponds to the <i>off_vid</i> provided.
The Receiving Vessel's WCPFC Identification Number (VID)	<i>rec_vid</i>	INTEGER Example: 644	Reference: CMM2009-06, annex 3, para 2; with the WIN being replaced by the VID. Validation: Must be a valid VID, on the date of transhipment, in the WCPFC Record of Fishing Vessels.
The Receiving Vessel's Name	<i>rec_vessel</i>	VARCHAR(64) Example: <i>Super Hauler 2</i>	Reference: CMM2009-06, annex 3, para 2. Validation: Must be the vessel name which, in the WCPFC Record of Fishing Vessels, corresponds to the <i>rec_vid</i> provided.
The date on which the transhipment is proposed to start	<i>prop_date</i>	VARCHAR(11) ISO8601 – Date only format. See Appendix 2. Example: 2016-11-25	Reference: CMM2009-06, annex 3, para 5. Validation: Must be a date in the near future.

RECORD NAME: *tn_receiving_vessel*

All of the fields listed below are required in each record. No field may contain missing or null values.

Information Required	Field Name	Field Format	Notes
The location at which the transshipment is proposed to start	<i>prop_loc</i>	VARCHAR(8), Uppercase Example: <i>WCPFC-HS</i>	Reference: CMM2009-06, annex 3, para 5. Validation: Must be a valid location code as found in Appendix 3.
The latitude at which the transshipment is proposed to start	<i>prop_latitude</i>	CHAR(5) ISO6709, to the nearest 0.1 degree ±DD.D Example for Pohnpei Airport: <i>+07.0</i>	Reference: CMM2009-06, annex 3, para 5. Validation: Must be a valid latitude.
The longitude at which the transshipment is proposed to start	<i>prop_longitude</i>	CHAR(6) ISO6709, to the nearest 0.1 degree ±DDD.D Example for Pohnpei Airport: <i>+158.2</i>	Reference: CMM2009-06, annex 3, para 5. Validation: (1) Must be a valid longitude and (2) Should, when considered along with the <i>prop_latitude</i> , represent a location that is at sea and within the <i>prop_loc</i> .
Whether this is a new transshipment notice, or an amendment to a previous transshipment notice	<i>trans_id</i>	CHAR(16) Example: <i>New-Transshipment</i>	NEW - Rationale: Needed to allow already submitted transshipment notices to be amended. Validation: In the case of new transshipment notices, must be "New-Transshipment". In the case of amendments to a previous transshipment notice, must be the Transshipment ID that the WCPFC sent to the contact email address when confirming receipt of the notice.
The date and time that the notice was submitted	<i>submit_time</i>	VARCHAR(17) ISO 8601 – Date and time without seconds. See Appendix 2. Example: <i>2016-11-25T14:46</i>	NEW - Rationale: Needed to ensure consistency with the standards documented in sections 3.b, 4.b, and 5.b. Validation: Must be a recent earlier date/time. Note: Could be automatically generated by the submitters computer system at the moment that the declaration was sent.
A contact email address	<i>contact_email</i>	VARCHAR(50) Example: <i>a.carrier@gmail.com</i>	NEW - Rationale: An email address that WCPFC should use to (1) confirm receipt of this notice and (2) contact if there are any problems with the quality / completeness of this notice. Validation: Must be a valid email address.

6.c Standards for cancelling a previous e-report

<i>tn_re_cancel</i>

It will be possible to use e-reporting to cancel a previously submitted Receiving Vessel Transhipment Notice. For each Receiving Vessel Transhipment Notice cancellation, there must be one *tn_re_cancel* record.

RECORD NAME: <i>tn_re_cancel</i>			
All of the fields listed below are required in each record. No field may contain missing or null values.			
Information Required	Field Name	Field Format	Notes
The Receiving Vessel's WCPFC Identification Number (VID)	<i>rec_vid</i>	INTEGER Example: 1867	Validation: Must be a valid VID in the WCPFC Record of Fishing Vessels.
The WCPFC Transhipment ID for the Receiving Vessel Transhipment Notice that is being cancelled	<i>trans_id</i>	CHAR(16) Example: <i>FGYH7892ELPU3087</i>	Rationale: Needed to allow already submitted transhipment notices to be amended. Validation: Must be a valid WCPFC Transhipment ID, for a transhipment notice that had previously been made by the receiving vessel. Note: Will have been sent by the WCPFC to the contact email address when the Transhipment Notice was first submitted.
A contact email address	<i>contact_email</i>	VARCHAR(50) Example: <i>a.carrier@gmail.com</i>	Rationale: An email address that WCPFC should use to (1) confirm receipt of this cancellation and (2) contact if there are any problems with the quality / completeness of this cancellation. Validation: Must be a valid email address.

6.d Notes

For the e-reporting of Transhipment Notices by receiving vessels:

- the requirement for the receiving vessel to supply its WIN (CMM2009-06, annex 3, para 1) would be replaced by a requirement to supply its VID.
- the requirement for the receiving vessel to supply information on the product to be transhipped (CMM2009-06, annex 3, para 3) would be waived. The offloading vessel would still be required to supply this information.

7. STANDARDS FOR THE TRANSMISSION OF TRANSHIPMENT E-REPORTS

XML and JSON are the preferred formats for data transmission. During a transitional period, the WCPFC will also support XLSX. Vessels, agents or CCMs wishing to e-report Transshipment Declarations and Transshipment Notices can choose which of these three formats they use.

Transmission Format Chosen	Standards
XML	<ol style="list-style-type: none"> 1. There must be one XML Document for each Transshipment Declaration or Transshipment Notice being sent. 2. Within each XML Document, there must be one root element named "WCPFC_Transhipment". 3. Nested within the root element, for each record being transmitted there must be one 1st level element. These 1st level elements must have the appropriate Record Name, as defined in sections 3, 4, 5 and 6. 4. Nested within each 1st level element, for each field being transmitted there must be one 2nd level element. These 2nd level elements must have the appropriate Field Name, as defined in sections 3, 4, 5 and 6. 5. Each 2nd level element must contain text appropriate to its Field Name, and fulfilling the standards documented in sections 3, 4, 5 and 6.
JSON	<ol style="list-style-type: none"> 6. There must be one JSON File for each Transshipment Declaration or Transshipment Notice being sent. 7. Within each JSON File, there must be one root object with the key "WCPFC_Transhipment". 8. The value of WCPFC_Transhipment must be a series of 1st level objects, one for each record being transmitted. 9. The keys for these 1st level objects must be the appropriate Record Names, as defined in sections 3, 4, 5 and 6. 10. The values of these 1st level objects must be a series of 2nd level objects, one for each field being transmitted. 11. The keys for these 2nd level objects must be the appropriate Field Names, as defined in sections 3, 4, 5 and 6. 12. Each 2nd level object must contain a value appropriate to its Field Name, and fulfilling the standards documented in sections 3, 4, 5 and 6.
XLSX	<ol style="list-style-type: none"> 13. There must be one XLSX file for each Transshipment Declaration or Transshipment Notice being sent. 14. Within the XLSX file, there must be one worksheet for each type of record (as defined in sections 3, 4, 5 and 6.) being sent. 15. The name of each worksheet must be the Record Name (as defined in sections 3, 4, 5 and 6). 16. On each worksheet, the data must start in cell A1 and be contiguous. 17. Row 1 of each worksheet must contain the Field Names as defined in sections 3, 4, 5 and 6; and each column must contain data appropriate to its column heading and fulfilling the standards documented in sections 3, 4, 5 and 6.

APPENDICES

APPENDIX 1 – TRANSHIPMENT FISHING GEAR CODES

Fishing Gear	Code
With purse lines (purse seine)	PS
- one boat operated purse seines	PS1
- two boat operated purse seines	PS2
Without purse lines (lampara)	LA
Beach seines	SB
Boat or vessel seines	SV
- Danish seines	SDN
- Scottish seines	SSC
- Pair seines	SPR
Seine nets (not specified)	SX
Portable lift nets	LNP
Boat-operated lift nets	LNB
Shore-operated stationary lift nets	LNS
Lift nets (not specified)	LN
Set gillnets (anchored)	GNS
Driftnets	GND
Encircling gillnets	GNC
Fixed gillnets (on stakes)	GNF
Trammel nets	GTR
Combined gillnets-trammel nets	GTN
Gillnets and entangling nets (not specified)	GEN
Gillnets (not specified)	GN
Handlines and pole-lines (hand operated)	LHP
Handlines and pole-lines (mechanized)	LHM
Set longlines	LLS
Drifting longlines	LLD
Longlines (not specified)	LL
Trolling lines	LTL
Hooks and lines (not specified)	LX
Harpoons	HAR
Miscellaneous gear	MIS
Recreational fishing gear	RG

Notes:

- these are the same gear codes contained in Attachment 6 of CMM2014-03 (Standards, Specifications and Procedures for the Western and Central Pacific Fisheries Commission Record of Fishing Vessels).
- the Commission may update its Transshipment Fishing Gear Codes at any time. When this occurs, the most recent Transshipment Fishing Gear Codes that have been approved by the Commission must be used.

APPENDIX 2 – DATE/TIME FORMAT

DATE and DATE/TIME fields must adhere to the ISO8601 standard formats listed in the table below.

For fields requiring	Use the format	Example
UTC date	[YYYY]-[MM]-[DD] Z	2016-06-23Z
LOCAL date	[YYYY]-[MM]-[DD]	2016-06-23
UTC date/time	[YYYY]-[MM]-[DD]T[HH]:[MM]Z	2016-06-23T14:35Z
LOCAL date/time	[YYYY]-[MM]-[DD]T[HH]:[MM]	2016-06-23T14:35

Note that this is the same standard for Date and Date/Time reporting adopted by the WCPC13 for the e-reporting of Operational Logsheet data.

APPENDIX 3 – TRANSHIPMENT LOCATION CODES

Location	Code
Within the EEZ of American Samoa	EEZ-ASM
Within the EEZ of Australia	EEZ-AUS
Within the EEZ of Commonwealth of the Northern Mariana Islands	EEZ-MNP
Within the EEZ of Cook Islands	EEZ-COK
Within the EEZ of Federated States of Micronesia	EEZ-FSM
Within the EEZ of Fiji	EEZ-FJI
Within the EEZ of French Polynesia	EEZ-PYF
Within the EEZ of Guam	EEZ-GUM
Within the EEZ of Indonesia	EEZ-IDN
Within the EEZ of Japan	EEZ-JPN
Within the EEZ of Kiribati	EEZ-KIR
Within the EEZ of Nauru	EEZ-NRU
Within the EEZ of New Caledonia	EEZ-NCL
Within the EEZ of New Zealand	EEZ-NZL
Within the EEZ of Niue	EEZ-NIU
Within the EEZ of Palau	EEZ-PLW
Within the EEZ of Papua New Guinea	EEZ-PNG
Within the EEZ of Philippines	EEZ-PHL
Within the EEZ of Republic of Marshall Islands	EEZ-MHL
Within the EEZ of Samoa	EEZ-WSM
Within the EEZ of Solomon Islands	EEZ-SLB
Within the EEZ of Tokelau	EEZ-TKL
Within the EEZ of Tonga	EEZ-TON
Within the EEZ of Tuvalu	EEZ-TUV
Within the EEZ of United States of America	EEZ-USA
Within the EEZ of Vanuatu	EEZ-VUT
Within the EEZ of Wallis and Futuna	EEZ-WLF
Within the WCPFC Convention Area on the High Seas	WCPFC-HS
Within the WCPFC Convention Area, but not within an EEZ and not on the High Seas	WCPFC-OT
Within the IOTC Agreement Area	IOTC
Within the IATTC Convention Area	IATTC
Within the ICCAT Convention Area	ICCAT
Other, not listed above	OTHER

Note

- these are the same locations listed in the footnotes to CMM2009-06, Annex I and Annex III; although the codes have been developed for this standard.
- the Commission may update its Transshipment Location Codes at any time. When this occurs, the most recent Transshipment Location Codes that have been approved by the Commission must be used.

APPENDIX 4 – TRANSHIPMENT PROCESSED STATE CODES

Processed State	Code
Whole	WH
Gutted and Headed	GH
Gutted, Headed and Tailed	GT
Gutted Only, not Gilled	GO
Gilled and Gutted	LG
Gilled, Gutted and Tailed	LT
Shark Fins	SF
Other, not listed above	OT

Note:

- these are the same product states listed in the footnotes to CMM2009-06, Annex I; although the codes have been developed for this standard.
- the Commission may update its Transshipment Processed State Codes at any time. When this occurs, the most recent Transshipment Processed State Codes that have been approved by the Commission must be used.

APPENDIX 5 – TRANSHIPMENT RFMO AREA CODES

Location	Code
Within the WCPFC Convention Area	WCPFC
Within the IOTC Agreement Area	IOTC
Within the IATTC Convention Area	IATTC
Within the ICCAT Convention Area	ICCAT
Other, not listed above	OTHER

Note that the Commission may update its Transshipment RFMO Area Codes at any time. When this occurs, the most recent Transshipment RFMO Area Codes that have been approved by the Commission must be used.