



**TECHNICAL AND COMPLIANCE COMMITTEE**

**Twelfth Regular Session**

21 - 27 September 2016

Pohnpei, Federated States of Micronesia

---

**SUMMARY OF SUBMISSIONS OF ANNUAL REPORT PART 1  
AND ANNUAL REPORT PART 2**

---

**WCPFC-TCC12-2016-IP01**

**24 August 2016**

**Paper prepared by the Secretariat**

**Purpose**

1. The purpose of this paper is to provide information on the annual reporting submissions by CCMs as required by the Commission.

**Background**

1. The WCPF Convention articles 23 and 25 require CCMs to annually provide information to the Commission on fishing activities by its flagged vessels. Since WCPFC2, a two-part reporting format has been used by CCMs to report on their fishing activities and the implementation of conservation and management measures for the preceding year. Annual Report Part 1 is intended to provide a summary of each CCMs fisheries, research and statistics information for the preceding calendar year and recently includes specific CMM-related reporting requirements related to the preceding calendar year. Annual Report Part 2 is a report on management and compliance measures taken by CCMs in the previous year. The dates for submission and the formats for reporting have varied over time.

**Developments in 2016**

2. As per previous years, the Annual Report Part 2 was available online. Availability of the Annual Report Part 2 online template was announced on 29 February 2016 in WCPFC Circular No. 2016/07, almost a month earlier than when it was available in 2015. The early availability of the online template was a result of the Secretariat's early planning at the end of 2015/early 2016.

3. In March 2016, WCPFC Secretariat attended the FFA MCS Working Group (FFA MCSWG) meeting and working alongside the FFA Secretariat, was able to assist FFA members with their Annual Reports Part 2. In April, the WCPFC Secretariat attended the SPC 10<sup>th</sup> Tuna Data Workshop, working alongside the SPC and FFA Secretariat in assisting its members with their Annual Reports Part 1. In addition, throughout the year, WCPFC Secretariat was able to work with and assist many CCMs electronically, via email and skype, with their reporting obligations, in particular the Annual Reports Part 2. This assistance was often in response to specific requests from CCMs, or CCMs accepting the Secretariat's offer to assist.

4. Completion and submission by CCMs of the Annual Report Part 2 online enables part of the draft Compliance Monitoring Report to be auto-populated with the answers from Annual Report Part 2 (“CCM Assessment” and “CCM Implementation”). In addition, the Secretariat is able to track CCM’s activity on the online template, and was able to offer assistance to CCMs as required and send out reminders to those yet to complete their report or showing non-activity on the online template, as the deadline drew closer. These efforts, together with the fact that the deadline for submission of these reports are evaluated in the Compliance Monitoring Scheme (CMS) process may have contributed, in part, to the improvements in timely submission by CCMs of their Annual Reports in 2016.

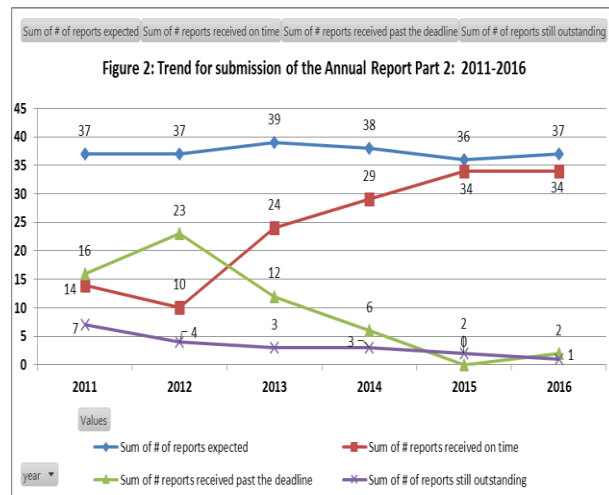
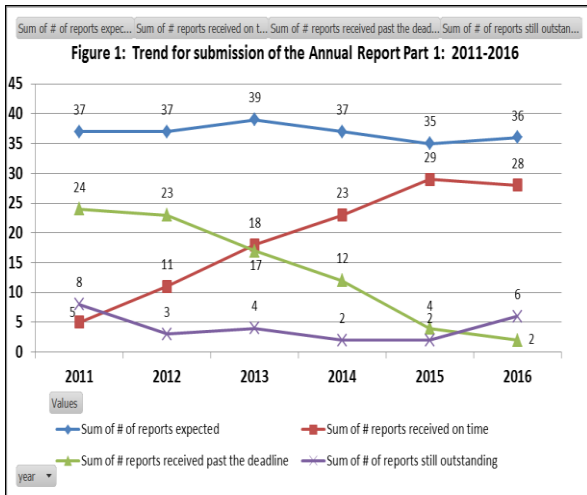
5. This year, 78% of the Annual Reports Part 1 has been submitted on time, 6% were submitted past the deadline and 17% are yet to submit its Annual Report Part 1. On the other hand, 92% of the Annual Reports Part 2 has been submitted on time, 5% were submitted past the deadline and 3% are yet to submit its Annual Report Part 2. As at 19 August 2016, there are six Annual Reports Part 1 and one Annual Reports Part 2, covering 2015 activities, still outstanding.

6. Table 1 provides a summary of the timeliness of the submission of Annual Reports Part 1 and Part 2 in 2016, covering 2015 activities. It also provides, for comparison, submission of Annual Reports Part 1 and Part 2 for the past few years, after the Compliance Monitoring Scheme was first adopted in 2010.

### **Annual Report Part 1 & 2 and the draft Compliance Monitoring Reports (dCMR)**

7. The Annual Reports Part 1 and 2 are two important sources of information for the preparation of the draft CMR (dCMR). The CCM reported information in Annual Report Part 2 (YES/NO/not applicable and any explanations) is able to be auto-populated into the draft CMR report. In addition, relevant information from Annual Report Part 1 is included in the dCMR. Hence, the timely submissions of these two reports are crucial to the preparations and disseminations of the dCMR. The continued improved timeliness of submissions by CCMs of Annual Reports Part 1 and Part 2 continued to assist the Secretariat with being able to prepare and disseminate the draft Compliance Monitoring Reports (dCMRs) in accordance with CMM 2015-07 *Conservation and Management Measure for Compliance Monitoring Scheme*. Advice of availability online for 37 CCMs of their relevant dCMRs was announced on 29 July 2016 in Circular No. 2016/42.

8. It is apparent that the inclusion of the requirement to evaluate compliance with Commission reporting deadlines in the Compliance Monitoring Scheme (CMM 2013-02 and its successors) since 2014 significantly contributed to CCMs submitting its Annual Reports on time. Figure 1 and Figure 2 below shows the trend in submission of Annual Report Part 1 and Part 2, respectively in the last 6 years.



9. TCC11 discussed a draft proposed timeline including deadlines for 2016 CMR and Annual Reports Part 1 and 2 (WCPFC-TCC11-2015-27). The deadlines related to CMR is incorporated in the relevant CMM for Compliance Monitoring Scheme (CMM 2015-07) adopted at WCFC12 but there was no decision regarding propose deadline for Annual Report Part 1 and 2. The paper to TCC11 proposed that Annual Report Part 1 and Part 2 be moved forward to 14 June (~50 days before SC or ~100 days before TCC) and 3 June (~110 days before TCC), respectively. This issue was discussed by the small working group that worked on the CMM for CMS at the margin of WCPFC12 but did not reach any conclusion. The Secretariat is supportive of CCMs giving consideration to agreeing to move the Annual Report deadlines to earlier in the year, noting that this would likely assist CCMs as well as the Secretariat by potentially providing more time within the compliance monitoring report process.

**Administration notes**

10. CCMs are reminded that the Secretariat is available to assist with any queries related to, or in their preparation of, their Annual Reports. All enquiries related to Annual Reports should be directed to [contact.ar@wcpfc.int](mailto:contact.ar@wcpfc.int)

Table 1: Submissions of Annual Report Part 1 and Part 2 for 2016 (covering 2015 activities) as well as the past five years

CCM	Annual Report Part 1 submission						Annual Report Part 2 submission						CCM	
	2011 (covering 2010 activities) due 7 Jul 2011	2012 (covering 2011 activities) due 7 Jul 2012	2013 (covering 2012 activities) due 7 Jul 2013	2014 (covering 2013 activities) due 7 Jul 2014	2015 (covering 2014 activities) due 6 Jul 2015	2016 (covering 2015 activities) due 4 Jul 2016	2016 (covering 2015 activities) due 1 Jul 2016	2015 (covering 2014 activities) due 1 Jul 2015	2014 (covering 2013 activities) due 1 Jul 2014	2013 (covering 2012 activities) due 1 Jul 2013	2012 (covering 2011 activities) due 1 Jul 2012	2011 (covering 2010 activities) due 29 Aug 2011		
AU	8-Jul-11	6-Jul-12	21-Jun-13	30-Jun-14	2-Jul-15	29-Jun-16	30-Jun-16	30-Jun-15	26-Jun-14	28-Jun-13	29-Jun-12	29-Aug-11	AU	
CA	8-Jul-11	18-Jul-12	18-Jun-13	21-Jun-14	1-Jul-15	8 Jun 16 22 Jun (rev1)	30-Jun-16	30-Jun-15	1-Jul-14	29-Jun-13	21-Jul-12	29-Aug-11	CA	
CN	2-Aug-11	19-Jul-12	16-Jul-13	24-Jul-14	6-Jul-15	4-Jul-16	30-Jun-16	30-Jun-15	1-Jul-14	25-Jun-13	23-Aug-12	26-Aug-11	CN	
CK	30-Apr-11	4-Aug-12	9-Jul-13	6-Jul-14	4-Jul-15	3-Jul-16	25-Jun-16	30-Jun-15	1-Jul-14	12-Jul-13	5-Jul-12	6-Sep-11	CK	
EU	21-Jul-11	26-Jul-12	11-Jul-13	7-Jul-14	7-Jul-14	6-Jul-15	4-Jul-16	1-Jul-16	1-Jul-15	1-Jul-14	2-Jul-13	3-Jul-12	28-Jul-11	EU
FM	4-Aug-11	26-Jul-12	23-Jul-13	25-Jun-14	4-Jul-15	4-Jul-16	30-Jun-16	23-Jun-15	26-Jun-14	25-Jun-13	25-Jul-12	26-Aug-11	FM	
FJ	9-Aug-11	11-Jul-12	7-Jul-13	3-Jul-14	5-Jul-15	23-Jun-16	1-Jul-16	25-Jun-15	26-Jun-14	28-Jun-13	2-Jul-12	1-Sep-11	FJ	
FR							1-Jul-16						FR	
PF	9-Jul-11	7-Jul-12	28-Jun-13	25-Jun-14	20-Jun-15	1-Jul-16	1-Jul-16	30-Jun-15	24-Jun-14	29-Jun-13	7-Jul-12	31-Aug-11	PF	
ID	5-Aug-11	16-Jul-12	27-May-13	7-Jul-14	7-Jul-15	1-Jul-16	1-Jul-16	1-Jul-15	1-Jul-14	27-Jun-13	16-Jul-12	1-Aug-11	ID	
JP	9-Jul-11	10-Jul-12	5-Jul-13	7-Jul-14	5-Jul-15	4-Jul-16	1-Jul-16	30-Jun-15	1-Jul-14	1-Jul-13	6-Jul-12	2-Sep-11	JP	
KI	26-Jul-11	4-Aug-12	9-Aug-13	3-Aug-14	5-Jul-15	4-Jul-16	28-Jun-16	30-Jun-15	1-Jul-14	2-Oct-13	28-Sep-12	26-Sep-11	KI	
KR	22-Jul-11	8-Jul-12	7-Jul-13	7-Jul-14	5-Jul-15	4-Jul-16	30-Jun-16	30-Jun-15	1-Jul-14	4-Jul-13	6-Jul-12	17-Aug-11	KR	
MH	22-Aug-11	26-Sep-12	5-Aug-13	28-Aug-14	5-Jul-15	4-Jul-16	1-Jul-16	1-Jul-15	1-Jul-14	1-Jul-13	26-Sep-12	5-Oct-11	MH	
NR	22-Sep-11	20-Jul-12	28-Apr-13	25-Jun-14	5-Jul-15	30-Jun-16	21-Jun-16	1-Jul-15	16-Jun-14	26-Jun-13	11-Jul-12	22-Sep-11	NR	
NC	8-Jul-11	6-Jul-12	27-Jun-13	4-Jul-14	3-Jul-15	29-Jun-16	30-Jun-16	30-Jun-15	30-Jun-14	28-Jun-13	29-Jun-12	19-Aug-11	NC	
NZ	8-Aug-11	4-Jul-12	4-Jul-13	1-Jul-14	5-Jul-15	4-Jul-16	27-Jun-16	1-Jul-15	30-Jun-14	1-Jul-13	29-Jun-12	30-Aug-11	NZ	
NU			9-Jul-13	5-Jul-14	5-Jul-15	1-Jul-16	30-Jun-16	1-Jul-15	1-Jul-14	16-Jul-13	25-Sep-12	18-Oct-11	NU	
PW		30-Jul-12	15-Jul-13	3-Jul-14	4-Jul-15		1-Jul-16	1-Jul-15	29-Sep-14	26-Aug-13	29-Sep-12		PW	
PG	23-Aug-11	10-Sep-12	19-Jul-13	11-Jul-14	15-Jul-15		4-Jul-16	1-Jul-15	28-Aug-14	13-Aug-13	28-Sep-12	10-Sep-11	PG	
PH	28-Jul-11	27-Jul-12	8-Jul-13	7-Jul-14	1-Jul-15	1-Jul-16	1-Jul-16	1-Jul-15	30-Jun-14	1-Jul-13	1-Jul-12	30-Aug-11	PH	
WS	8-Aug-11	31-Jul-12	4-Jul-13	8-Jul-14	5-Jul-15	4-Jul-16	30-Jun-16	1-Jul-15	1-Jul-14	1-Jul-13	12-Sep-12	29-Sep-11	WS	
SB	10-Aug-11	5-Aug-12	5-Aug-13	1-Aug-14	4-Jul-15	30-Jun-16	30-Jun-16	1-Jul-15	15-Jul-14	26-Jun-13		28-Aug-11	SB	
TW	8-Aug-11	6-Jul-12	4-Jul-13	7-Jul-14	6-Jul-15	4-Jul-16	1-Jul-16	1-Jul-15	1-Jul-14	28-Jun-13	1-Jul-12	29-Aug-11	TW	
TK	8-Sep-11	21-Jul-12	6-Jul-13	6-Jul-14	5-Jul-15	21-Jun-16	28-Apr-16	25-Jun-15	17-Jun-14	26-Jun-13	25-Sep-12	8-Sep-11	TK	
TO	8-Aug-11	30-Jul-12	5-Jul-13	4-Jul-14	3-Jul-15	6/28/2016 1 Jul (rev1)	22-Jun-16	30-Jun-15	29-Jun-14	13-May-13	8-Aug-12	30-Aug-11	TO	
TV	8-Aug-11	14-Aug-12	15-Jul-13	6-Jul-14	6-Jul-15	4-Jul-16	30-Jun-16	30-Jun-15	30-Jun-14	19-Nov-13	28-Sep-12	31-Oct-11	TV	
US	20-Jul-11	7-Jul-12	5-Jul-13	5-Jul-14	5-Jul-15	1-Jul-16	30-Jun-16	1-Jul-15	28-Jun-14	26-Jun-13	30-Jun-12	26-Aug-11	US	
VU	13-Aug-11	9-Aug-12	16-Jul-13	17-Jul-14	5-Jul-15	2-Jul-16	1-Jul-16	1-Jul-15	27-Jun-14	1-Jul-13	14-Sep-12	3-Oct-11	VU	
WF		13-Jun-12											WF	
Cooperating Non-Member						Cooperating Non-Member								
BZ	28-Jul-11	4-Jul-12	28-Aug-13	28-Jul-14					1-Jul-14	1-Jul-13	19-Jun-12	26-Jul-11	BZ	
KP													KP	
EC		1-Oct-12	26-Apr-13	13-Sep-14			1-Jul-16	1-Jul-15	1-Jul-14	28-Jun-13	9-Mar-12		EC	
SV	24-Jun-11	29-Jun-12	29-Jun-13	8-Jul-14	7-Jul-15	25-Jun-16	20-May-16	1-Jul-15	5-Jul-14	30-Jun-13	30-Jun-12	24-Aug-11	SV	
MX			24-Jul-13	5-Jul-14	23-Jun-15	22-Jun-16	20-Jun-16	22-Jun-15	1-Jul-14				MX	
PA		27-Mar-12	30-Sep-13	26-Sep-14	30-Jun-15		1-Jul-16	30-Jun-15	26-Sep-14	30-Jun-13	26-Sep-12		PA	
TH		13-Nov-12	26-Aug-13	17-Jul-14	7-Jul-15	29-Jul-16	1-Aug-16	1-Jul-15	1-Jul-14	14-Jul-13	13-Nov-12		TH	
VN	4-Aug-11	2-Aug-12	16-Jul-13	14-Jul-14	4-Jul-15	14-Jul-16	30-Jun-16	29-Jun-15	14-Jul-14	16-Jul-13	2-Aug-12	29-Aug-11	VN	
KN										26-Jul-13			KN	
SN										17-Jul-13			SN	
LR							1-Jul-16						LR	
As @ 19 Aug 2016, # of AR Pt1/2 still outstanding:						6 AR Pt1	1 AR Pt 2							

Note, CCMs sometimes submit revise versions of either Part 1 and/or Part 2. The date use here is the first date the report was received.

Not applicable

blank means report is still outstanding/not received

Date Report received after the due date