



Pacific  
Community  
Communauté  
du Pacifique

# **Trends in the South Pacific Albacore Longline and Troll Fisheries**

**WCPFC-SC12-2016/SA-WP-06**

Pilling, G.M. and Williams, P.

Oceanic Fisheries Programme, SPC

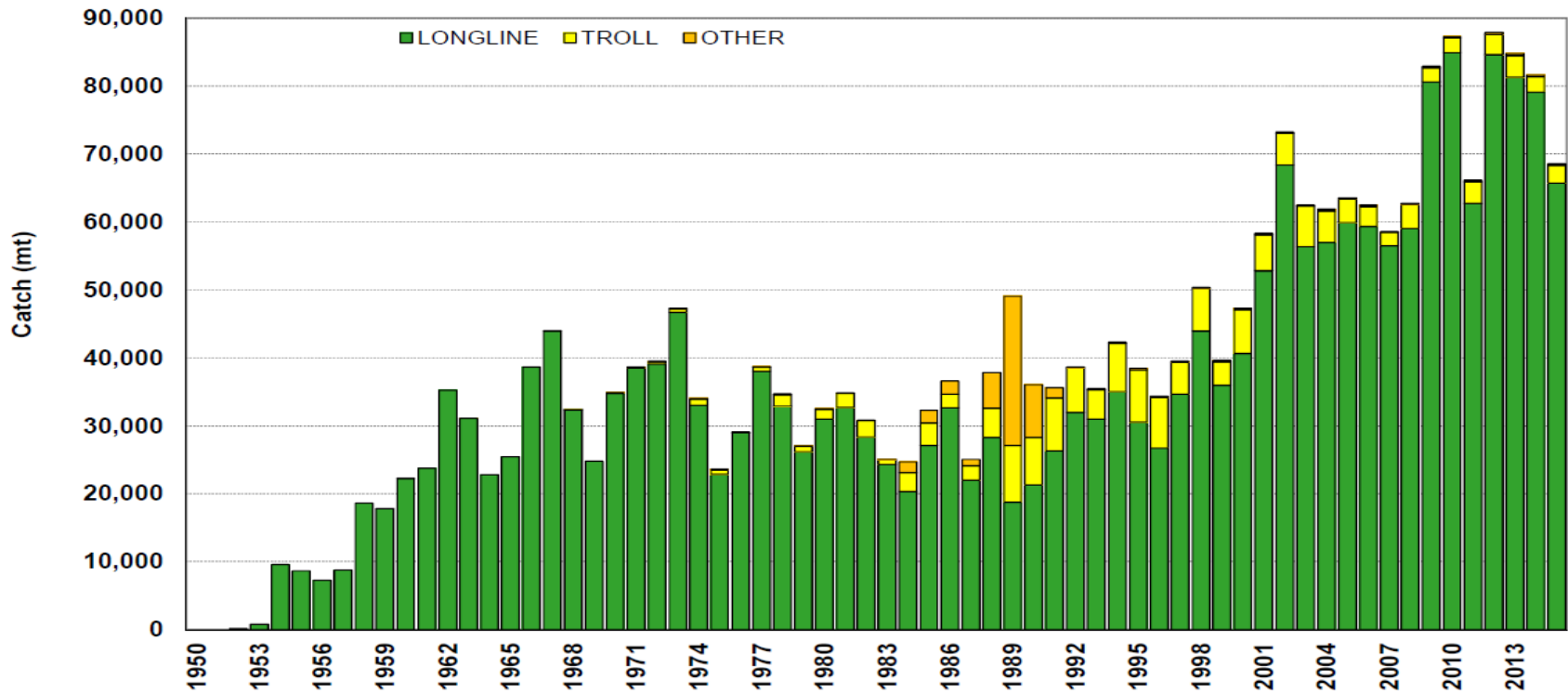
&

WCPFC Secretariat

# Overview

- Update on trends in fishery
  - Catch, by gear and region
  - Effort, by no. hooks and VMS days
  - CPUE, by region and flag
- Discussion of transshipment trends
- Summary of stock status
- Updated stock projections based on recent fishing patterns

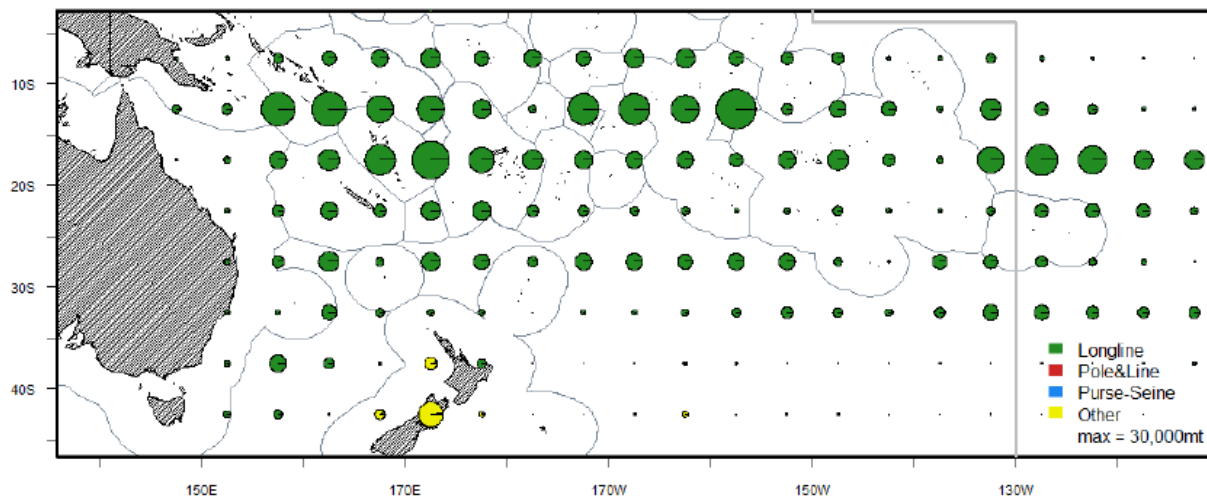
# South Pacific albacore catch by gear



- 2015 catch 7<sup>th</sup> highest on record, total LL catch down 17%, other catch up 14% from 2014
- Southern WCPCA LL catch down 5% from 2014, 33% of catch on high seas

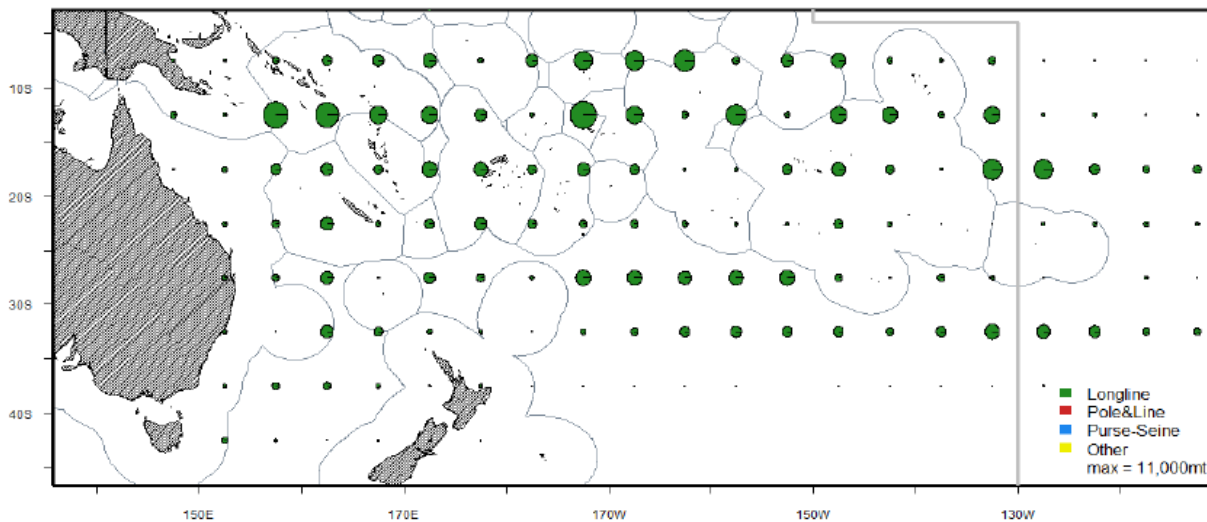
# South Pacific albacore catch by region

Albacore tuna 2011 - 2015



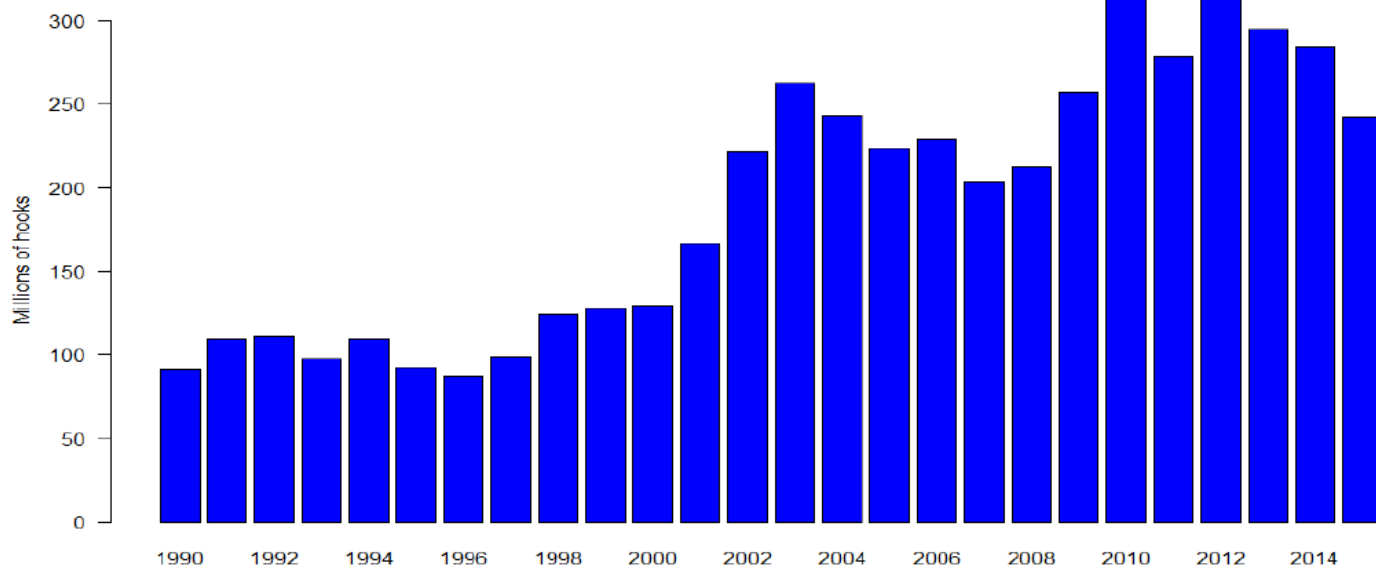
- Pattern in 2015 consistent with those in previous five years

Albacore tuna 2015



# South Pacific albacore effort

## Longline effort (M hooks) south of 10°S

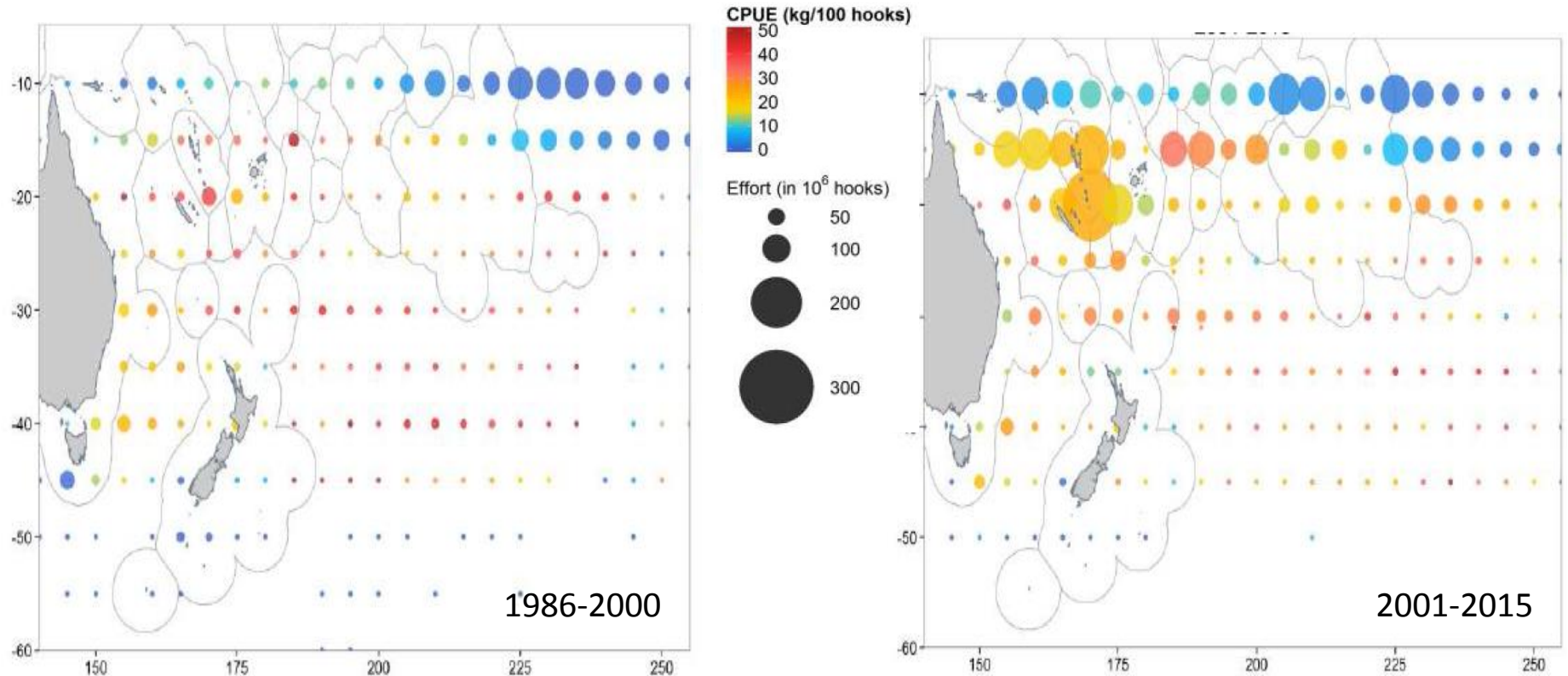


- 2014 effort -3% on recent period (2015 uncertain)
- VMS days most “up to date”
- 2015 effort +2% from 2014
- High seas effort proportion generally increasing

## Total LL VMS days south of 10°S

	2010	2011	2012	2013	2014	2015
EEZs	74,825	76,419	82,180	85,434	68,734	70,415
International waters (IW)	21,362	23,796	24,021	32,463	28,122	28,392
Total	96,187	100,216	106,201	117,897	96,856	98,807
% EEZs	77.8	76.3	77.4	72.5	71.0	71.3
% High Seas	22.2	23.7	22.6	27.5	29.0	28.7

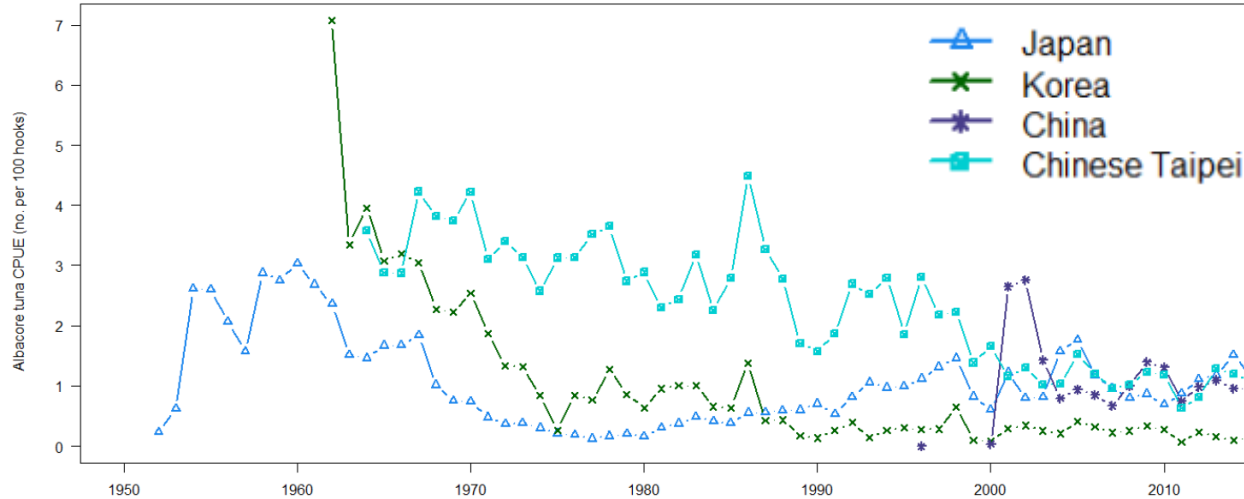
# Trends in Effort and CPUE



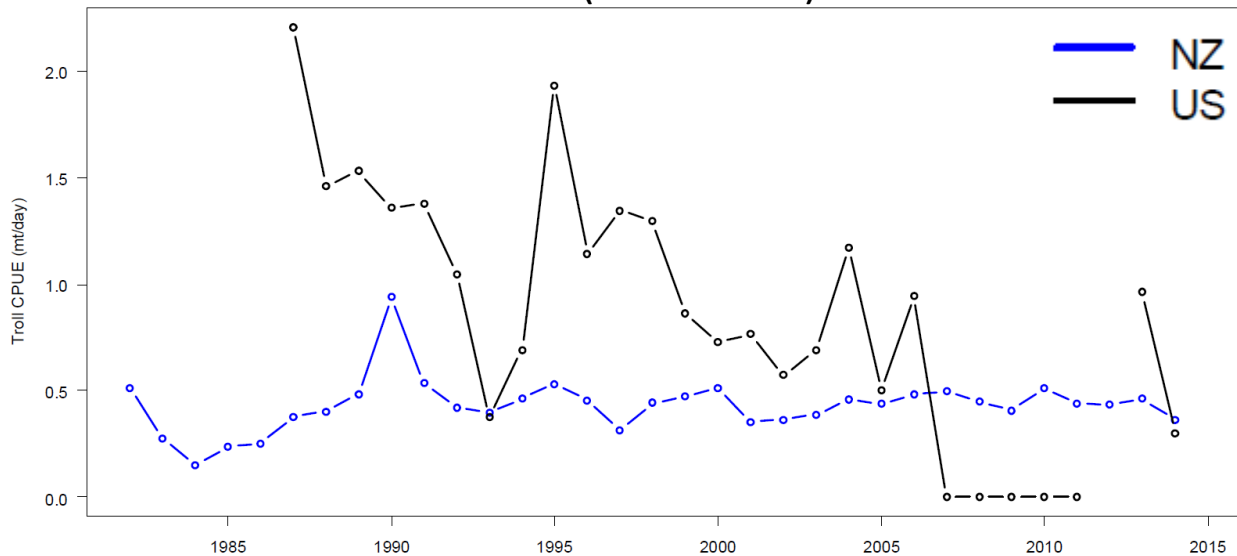
- High CPUE in 1986-2000 across much of southern WCP-CA
- Lower CPUE with increased effort in 2001-2015 period

# Trends in LL and PL CPUE by nation

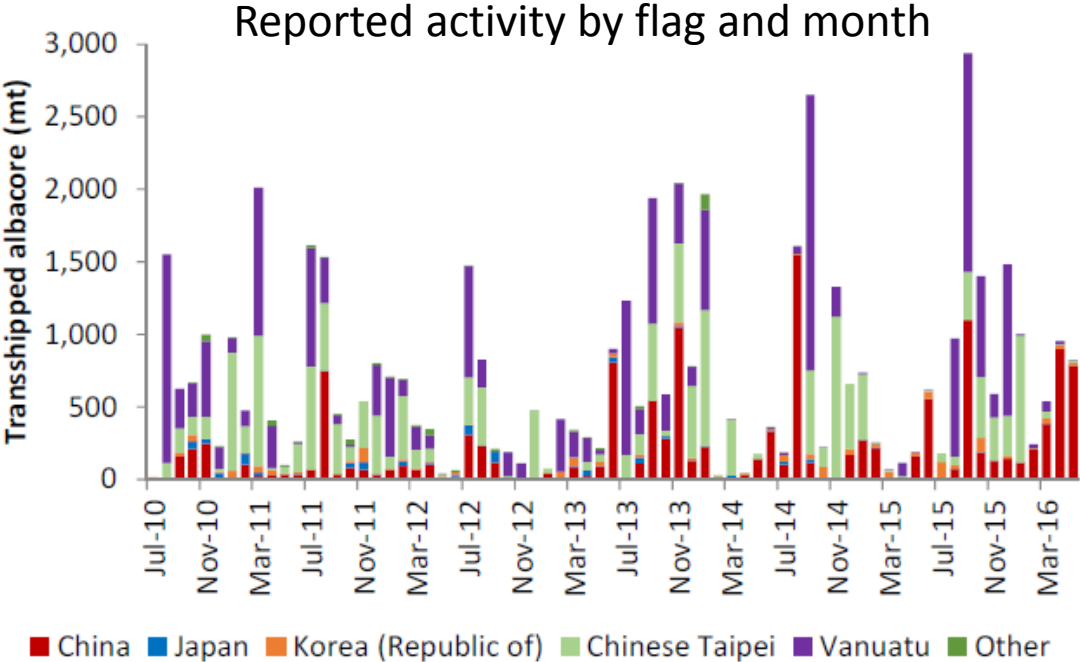
## Longline (1952-2015)



## Troll (1982-2014)



# Transshipment information – total ALB



Year	Annual total	Monthly average
2010*	4,091	682
2011	9,454	788
2012	5,502	458
2013	9,321	777
2014	9,643	804
2015	9,544	795
2016**	3,563	713

\* 01 July to 31 December data only.

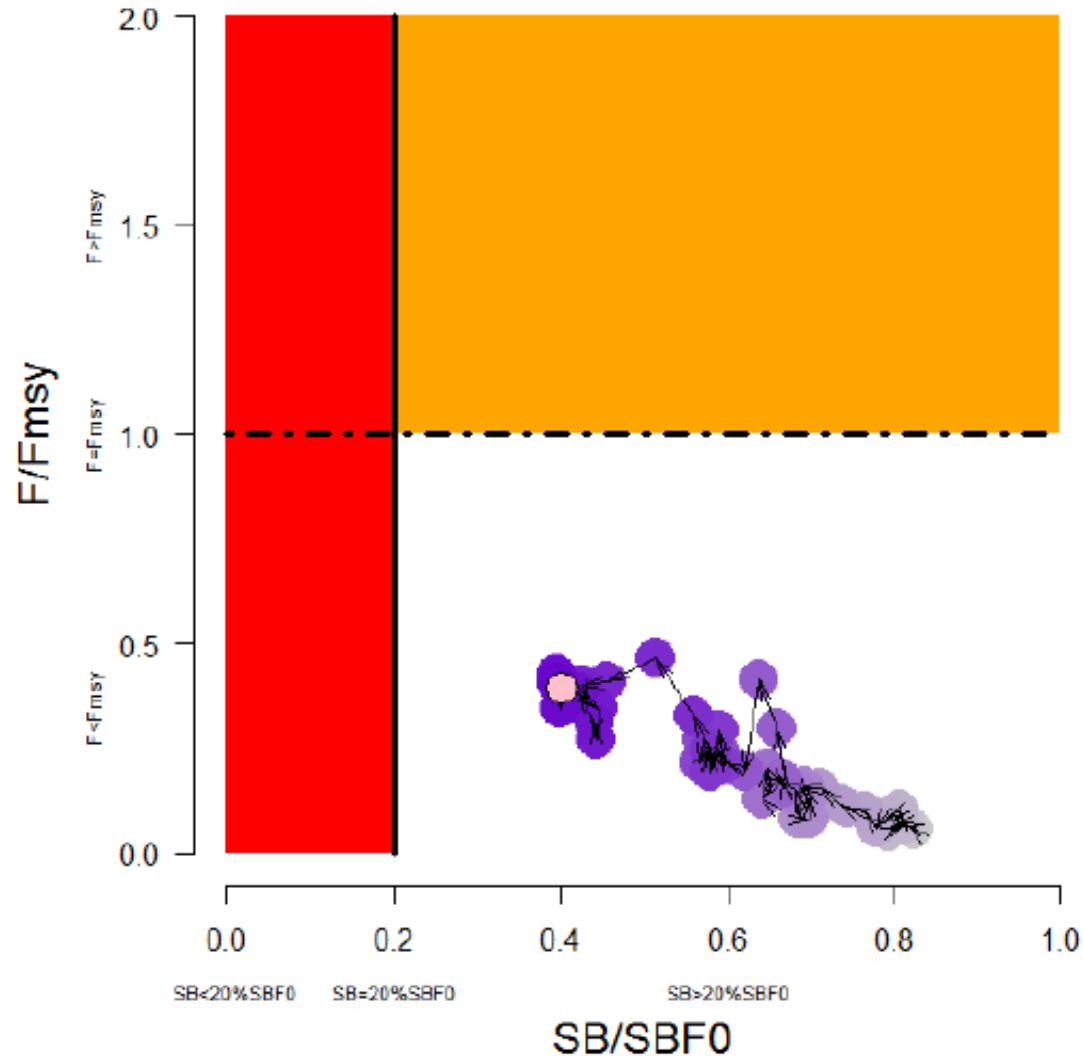
\*\* 01 January to 31 May data only.

- Multiple factors affect level of activity



# Albacore stock status

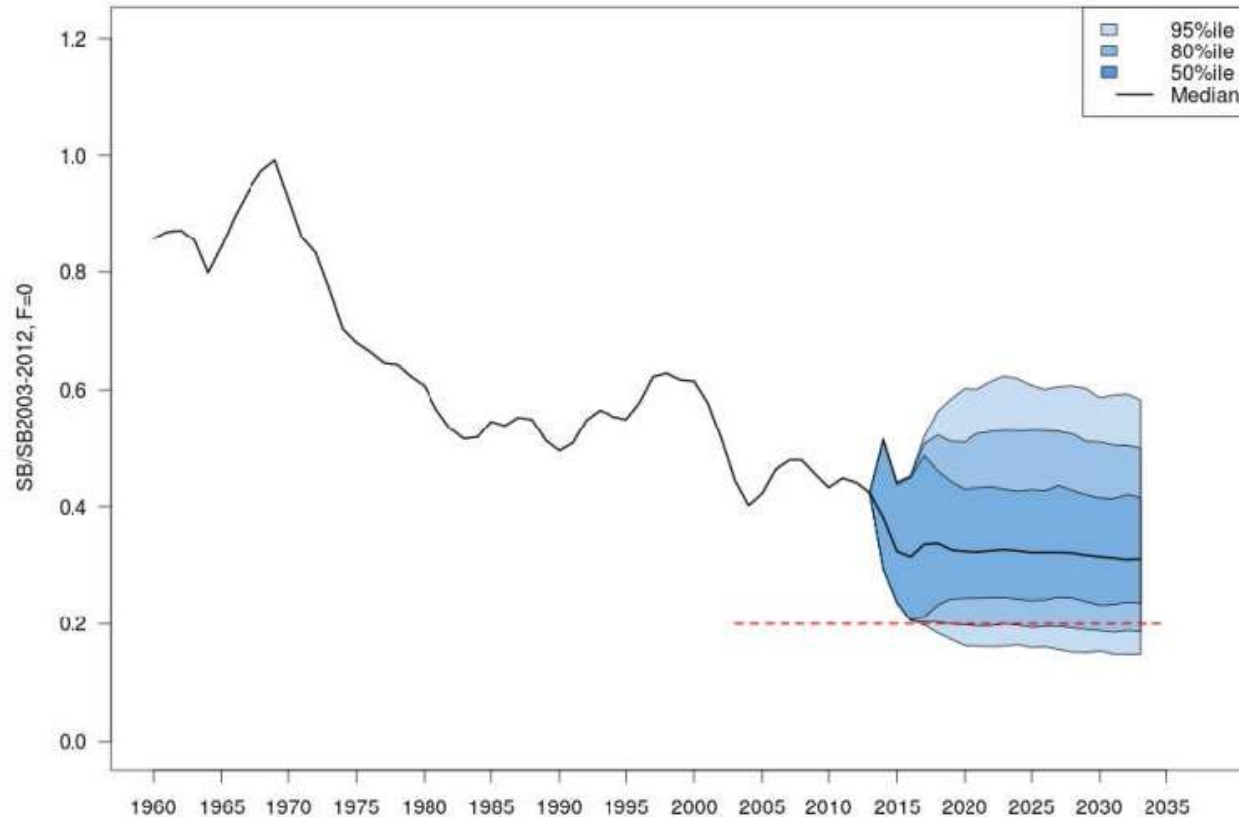
- Last assessment in 2015



# Albacore stock status

- Last assessment in 2015

Projections using 2014 effort levels



Stock status from 41%  $SB_{F=0}$  to 32% in 2033  
Risk  $SB < LRP = 19\%$  in 2033  
CPUE (VB) – 14% from 2013 levels