

# PTTP AGENDA (WCPFC-SC12-2016-09)

<b>1</b>	<b>PRELIMINARIES</b>
<b>1.1</b>	Review and adoption of agenda
<b>2</b>	<b>PTTP PROGRESS REPORT</b>
<b>2.1</b>	PTTP Activities (RP-PTTP-02)
<b>2.2</b>	Analyses
	2.2.1 Archival tagging analyses
	2.2.2 Development of individual based tagging simulator (EB-IP-01)
<b>3</b>	<b>WORK PLAN 2016-2017 AND BEYOND</b>
<b>4</b>	<b>OTHER REGIONAL OR SUB-REGIONAL TAGGING</b>
<b>5</b>	<b>ADMINISTRATIVE MATTERS</b>
<b>6</b>	<b>ADOPTION OF REPORT</b>



Pacific  
Community  
Communauté  
du Pacifique

# PROJECT 42: PTTP REPORT AND WORKPLAN FOR 2016-17

OFP

RP-PTTP-02

SC12, 2016 Bali, Indonesia

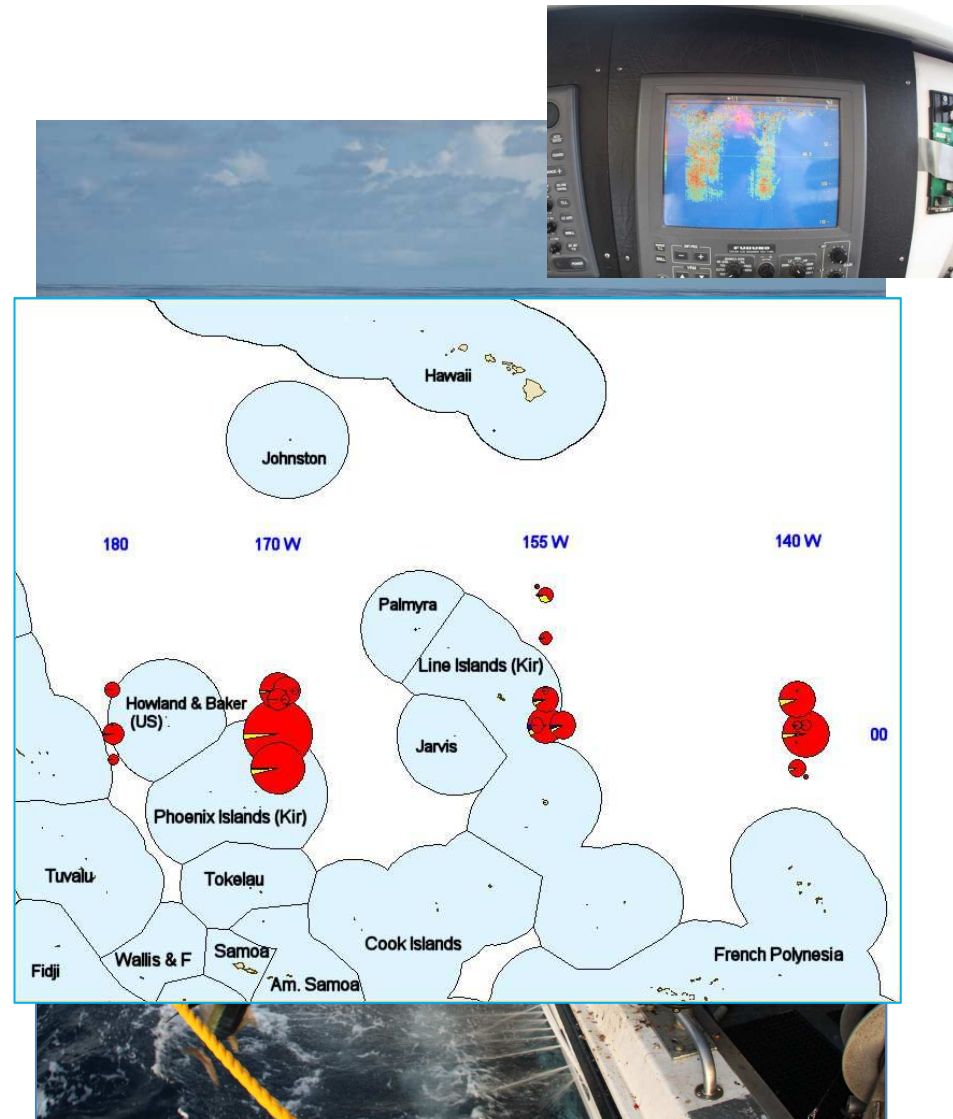
# Overview

- Context: previous campaigns
- Recoveries
- CP 10
- CP 11
- PNG trial 2016
- CP12
- Work plan for 2016 and beyond

**EU**  
**ISSF**  
**Papua New Guinea**  
**Republic of Korea**  
**WCPFC**

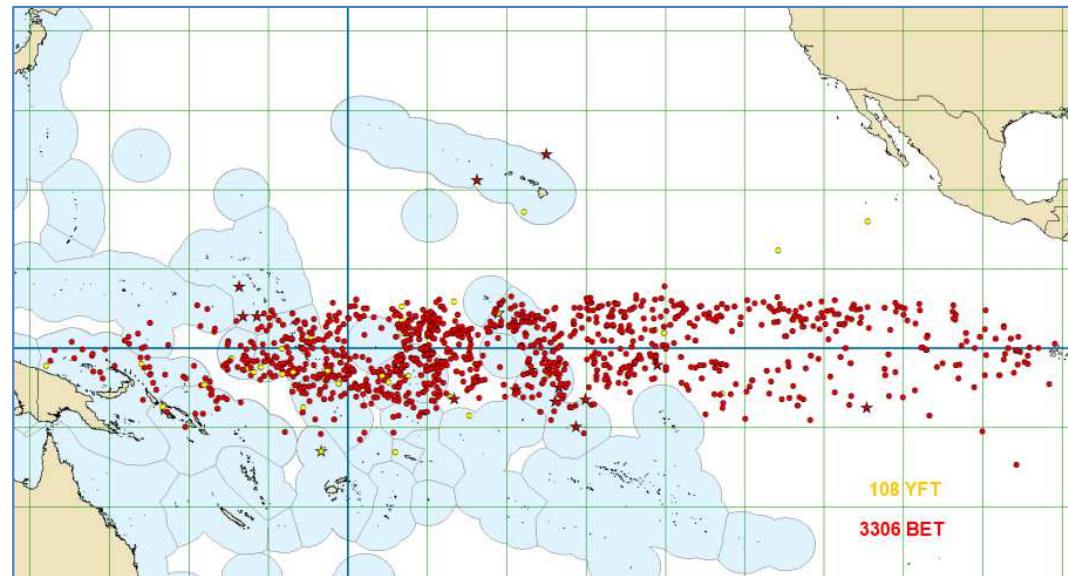
# Previous campaigns

- SPC-IATTC collaboration
- Targeting the TAO bigeye aggregations:
  - The Central Pacific (140W – 180)
  - 10 cruises of 3 to 6 weeks
  - >37,000 releases (94% BET) and 28.6% recoveries (> 30% in early cruise)
- Charter of multipurpose 20 m vessels based in Hawaii and Tonga



# Recoveries: conventional

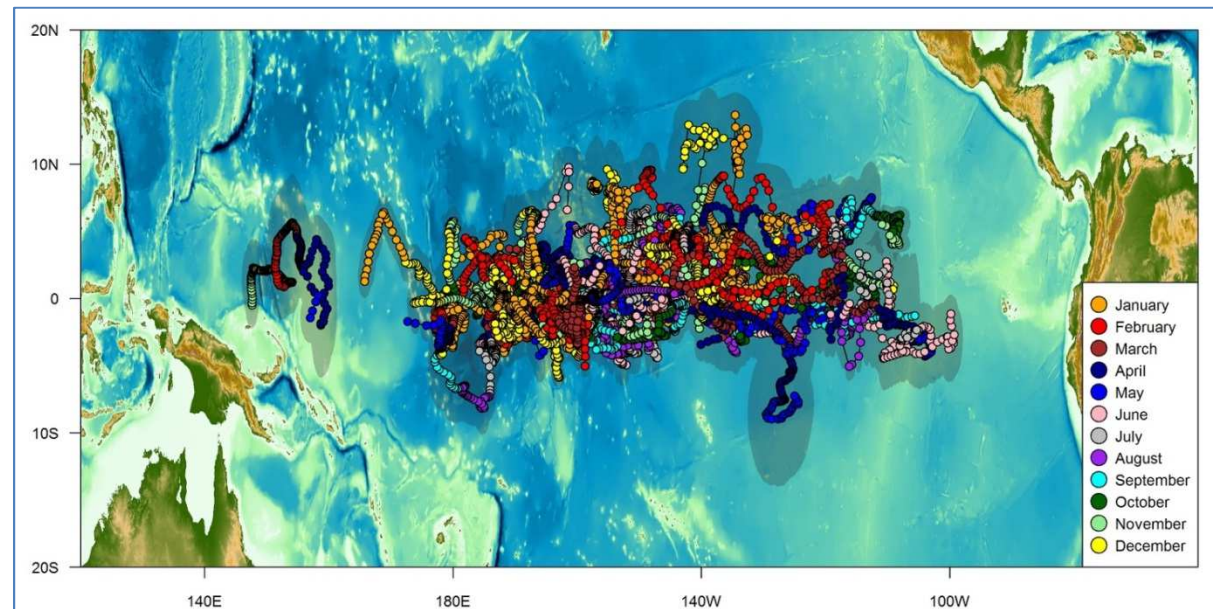
- A key stock assessment data input
- Still useful but currently need more bigeye data in west Pacific



Bigeye and yellowfin, validated ( $<10^\circ$ ) positions of recoveries (BET 3,414 / YFN 10,987)

# Recoveries: archival

- Bigeye behaviour: is the variance due to abundance or catchability?

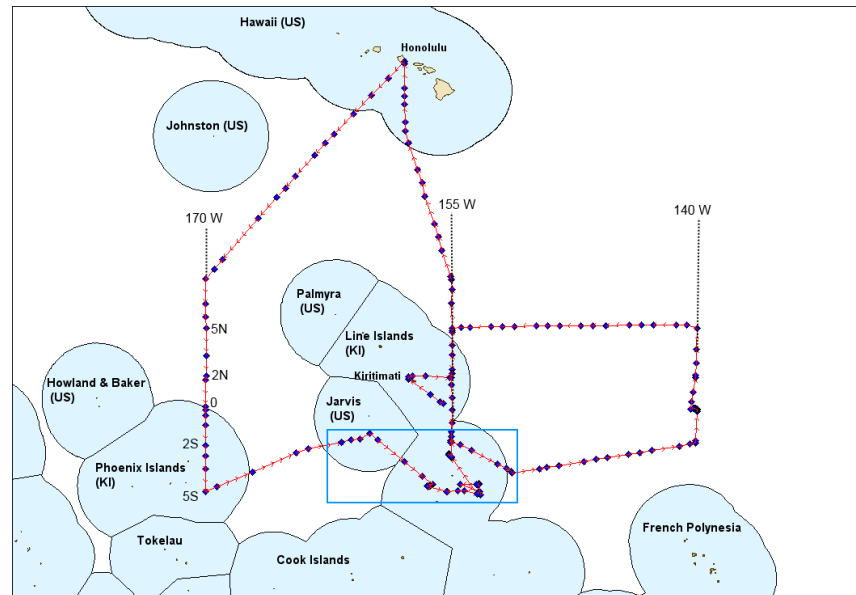


**Geolocation estimates from bigeye archival tags (TAL>30 d) 52 tags (total CP recovery = 85), 50 from CP releases (661 tags, including CP11)**



# CP11 – Sep to Oct 2015

- A 56 day cruise made under a strong El Nino event that probably had some impact on the fish distribution in equatorial area
- No good school aggregations found on any of the 15 visited TAO moorings



- 2959 CT and 165 AT
- 3 sonic stations/59 ST
- Bio sampling 101 fish



# CP11 – Sep to Oct 2015

- Good results on dFADs
- Excellent collaboration with TMI
- Good number of archival tags
- % of tagged species different from previous CP cruises, especially under TAO

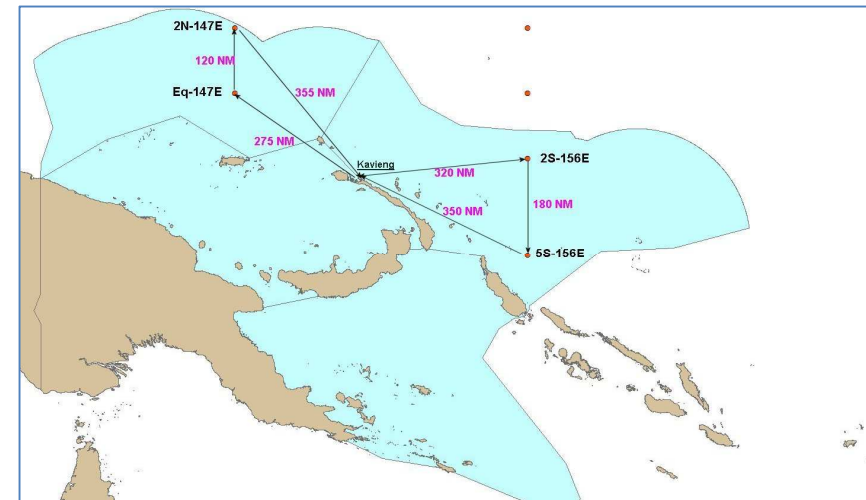
Tag type	BET	YFT	SKJ	other	Total
Sonic	23	21	10	5	59
Archival	95	70	0	0	165
satellite	0	1	0	0	1
Conventional Y13	1837	688	218	0	2743
<b>Total fish tagged</b>	<b>1953</b>	<b>773</b>	<b>228</b>	<b>5</b>	<b>2959</b>



School asso.	BET	SKJ	YFT	other	Total	% B	% S	% Y
Drifting FAD	1657	126	334	5	2122	78.1	5.9	15.7
TAO	296	102	439	-	837	35.4	12.2	52.4
<b>Cruise total</b>	<b>1953</b>	<b>228</b>	<b>773</b>	<b>5</b>	<b>2959</b>			

# PNG Trial – July 2016

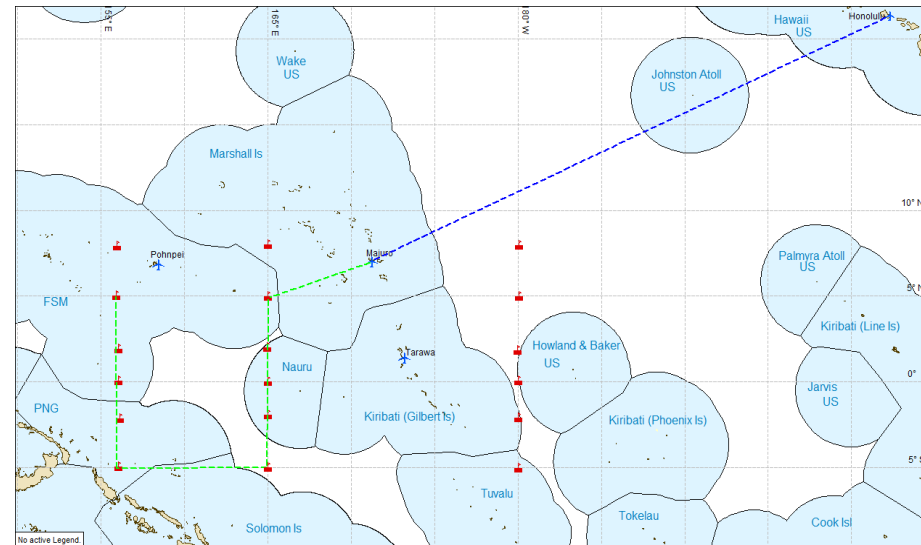
- Tagging trial in PNG occurred mid-July 2016 in collaboration with NFA
- The National Fisheries College training vessel “Pokajam” was used
- Planned to visit 2 TAOs anchored in the PNG EEZ along the 156 E longitude
- If tuna aggregations were present the plan was to release about 500 CT and 20 AT on bigeye tuna



- Due to weather, a missing TAO and a lack of fish, unfortunately very few fish were tagged

# CP12 - tagging research plan

- Following CP11 success planning similar approach in western WCPO
- dFAD access will be provided by TriMarine and Sopactuna
- Cruise dates: 1 Sep-8 Oct (Majuro to Majuro)
- Cruise funded by ISSF, Korea, EU and WCPFC



## Targets:

- 2000 CT and 50 AT around TAOs, and same at dFADs
- Sonic tagging around 3 FADs equipped with satellite linked acoustic receiver
- Tag silky sharks with satellite tags to collect info on behaviour and determine entanglement rates with dFADs

# Future work plan

- *See page 19 of the report for details*
- Continue tag seeding
- Continue TRO support at selected locations
- Ongoing verification with VMS and logbook
- Consolidation of the web-based tag data framework
- Routine update of data analyses
- Additional CP cruises subject to funding
- Normalise tagging programme with cruises every year alternating between SKJ in one year and BET in the next – starting with SKJ in 2017 (YFT would be covered by these as well)