



TWELFTH REGULAR SESSION
Bali, Indonesia
3-8 December 2015

ISSF SIDE EVENT -WCPFC12

WCPFC12-2015-OP18d
4th December
0900



HARNESSING TECHNOLOGY FOR FISHERIES MANAGEMENT

Integrating electronic systems: iFIMS in PNG



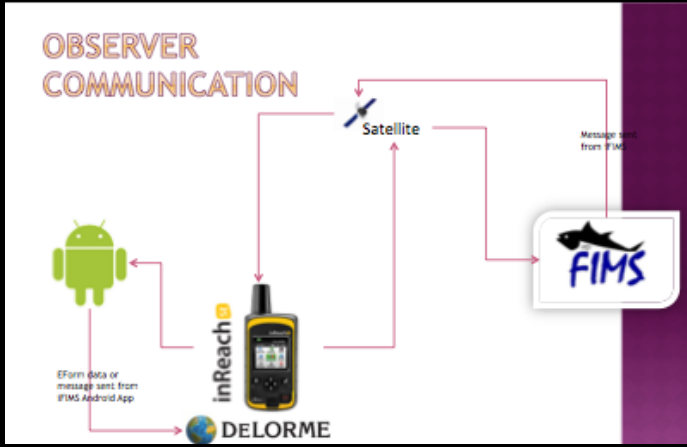
Why move to electronic systems



The Original Need



FIMS Development

A screenshot of a software interface for data management. It features several overlapping windows or panels. The top panel shows a grid of data with columns and rows, some cells highlighted in green. Below it, another panel displays a list of items with various attributes. The interface appears to be a web-based application for tracking and managing data.

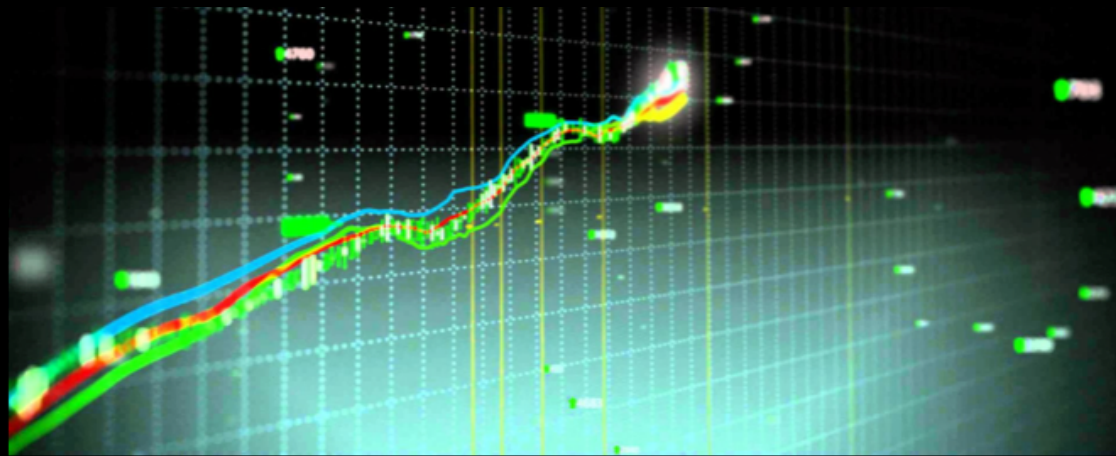
FIMS - Integrated Fisheries Information & Management System

The screenshot shows the FIMS web application interface. At the top, there is a navigation menu with options like 'Home', 'Clients', 'FADs', 'VDR', 'VDR Tracking', 'AIS', 'Electra', 'Reports', 'Observer', 'Port Sampling', 'Trips', 'Alerts', 'Notifications', 'Subscription', and user information. The main content area features a map of the Pacific Ocean region, with a red dot indicating a specific location. A pop-up window provides details for this location, including 'Name: BIG FID', 'Type: Single Point Buoy', 'SICR: 80534', 'Label Position: 23.052014 152.851461', 'Observer on Board: Mark Dales Days at Sea: 0', and 'Catch on Board: Shrimp - 80'. The interface also includes a sidebar with a 'Filter Selection' menu and a 'Recent Tracking' section.

NFA-FIMS



NFA-FIMS 2.0



Questions?

(Out of Office reply: I am currently
out of the office shall be
responding intermittently)