



Pacific  
Community  
Communauté  
du Pacifique

# **AGENDA 7C**

## **HARVEST CONTROL RULES – SOUTH PACIFIC ALBACORE**

SPC-OFP

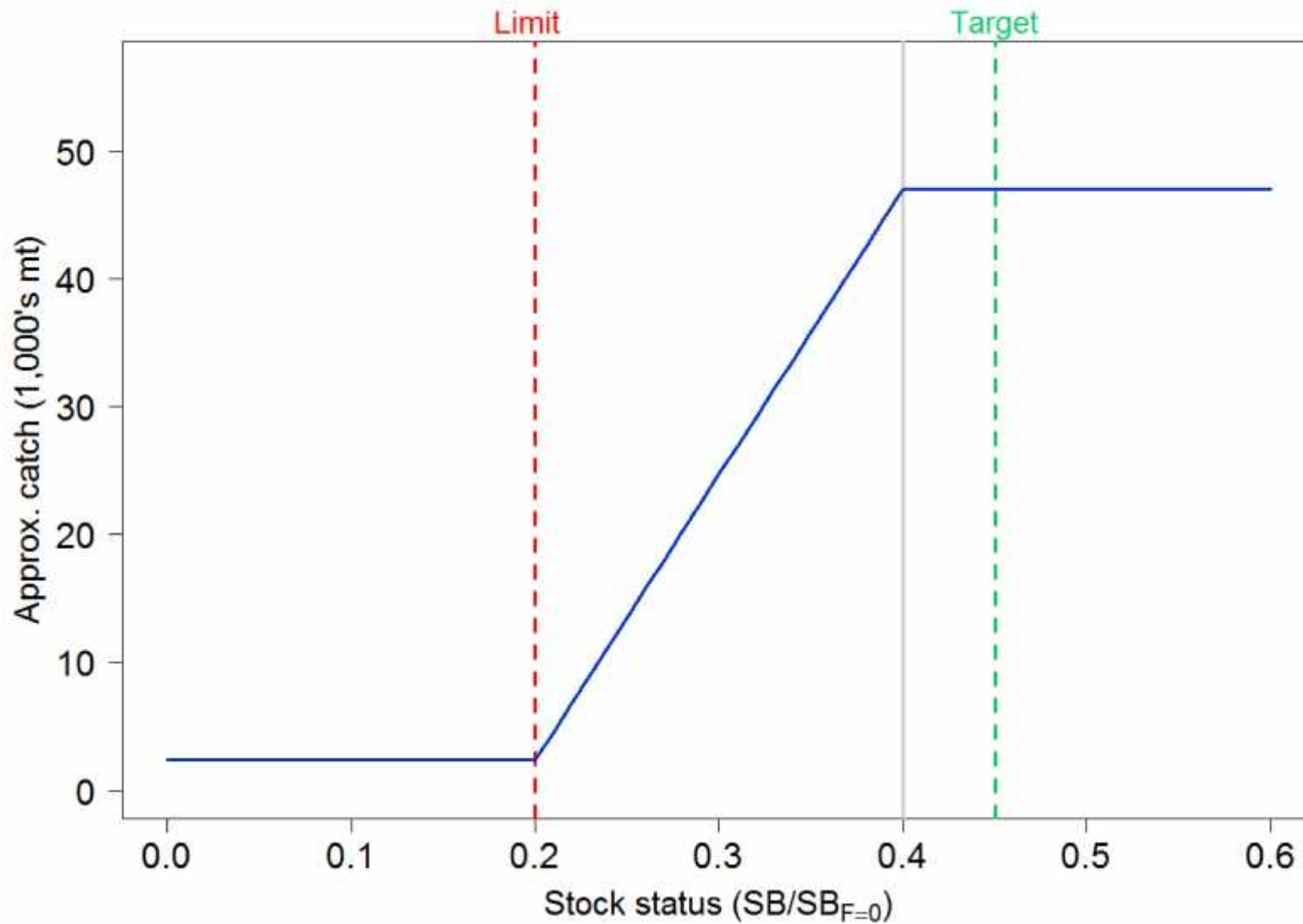
HSW 30/11 – 1/12/15

Stones Hotel, Kuta, Bali, Indonesia

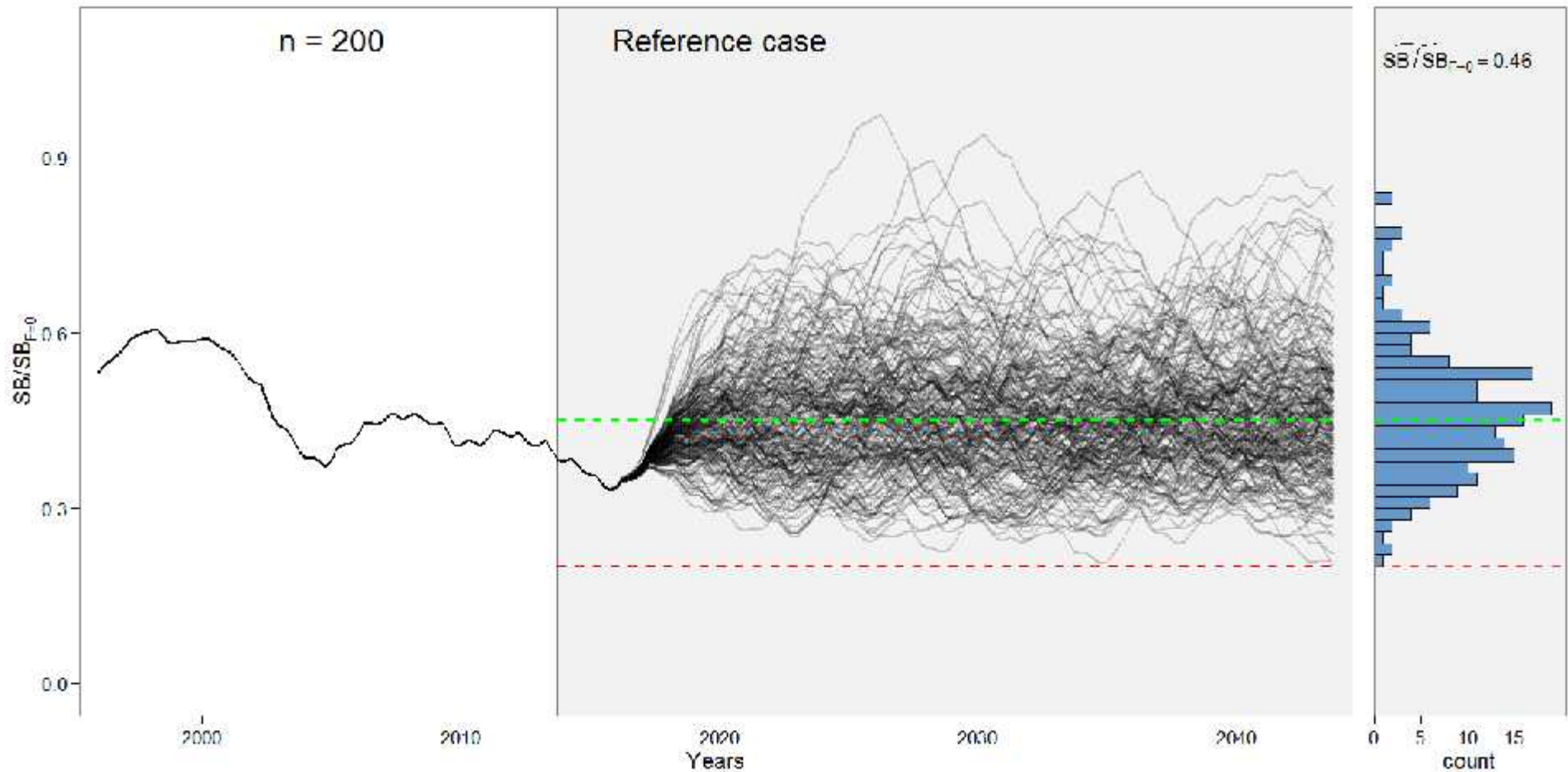
# Aims

- Demonstrate that HCRs can be based upon catch or effort
- Provide a basis for future discussions of albacore HCRs
  - Preliminary proof-of-concept based on 2015 assessment
- Catch based control of fishing/harvest
  - Based upon the 2015 stock assessment

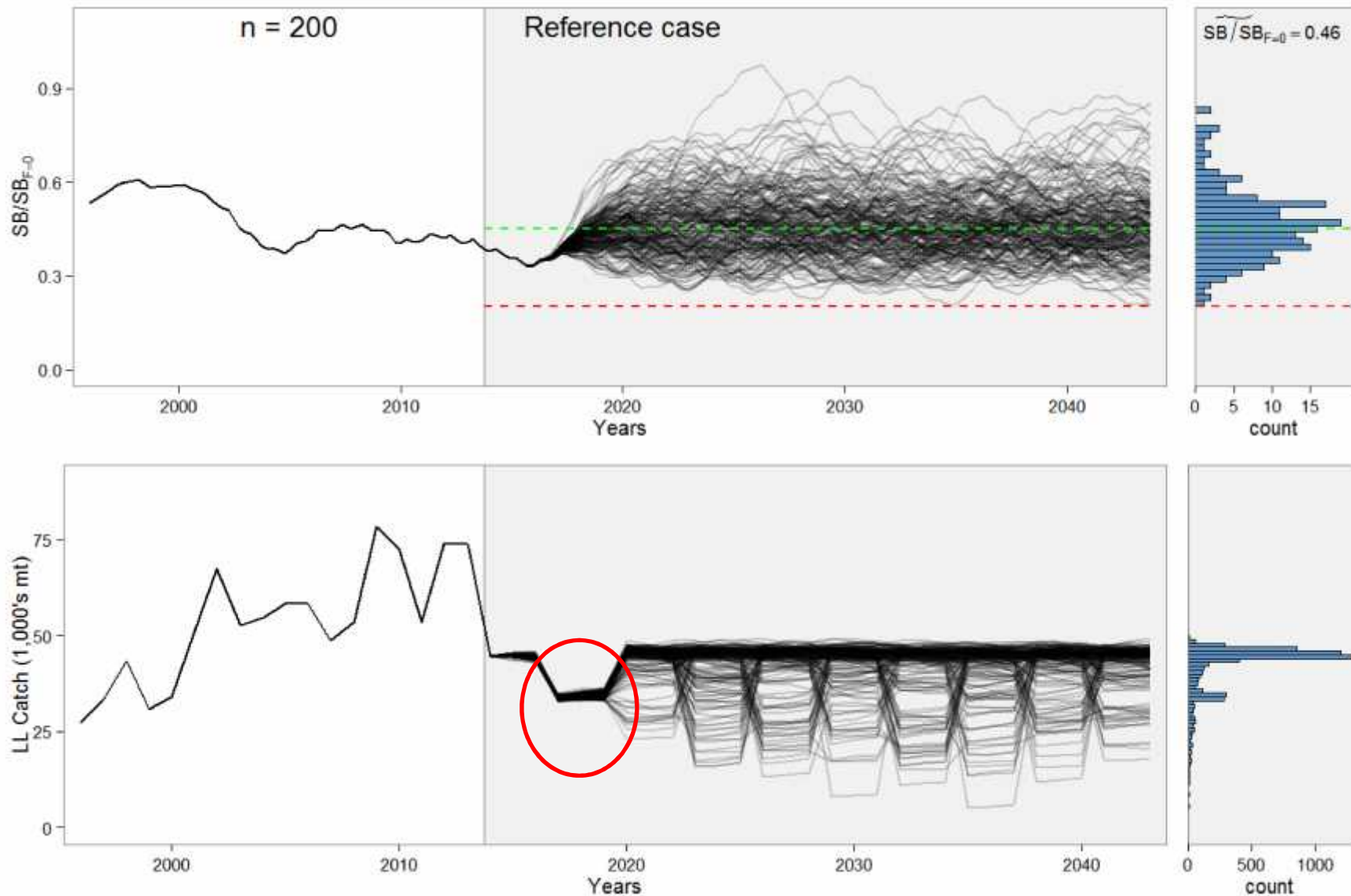
# South Pacific albacore HCRs



# How well does it work?

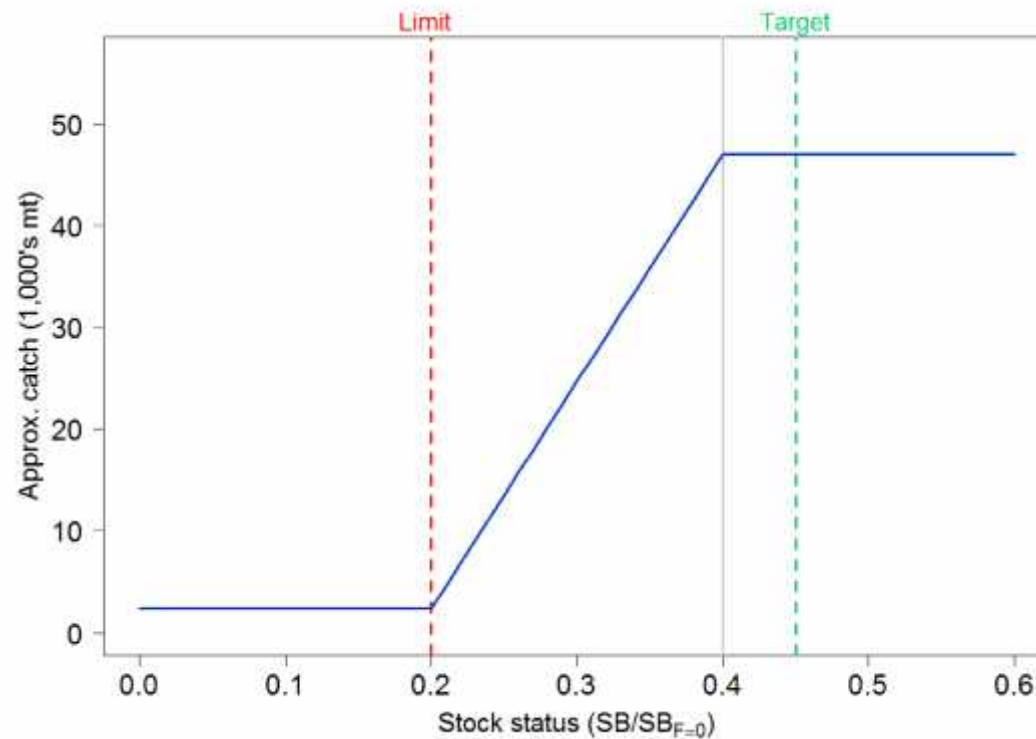


# How well does it work?



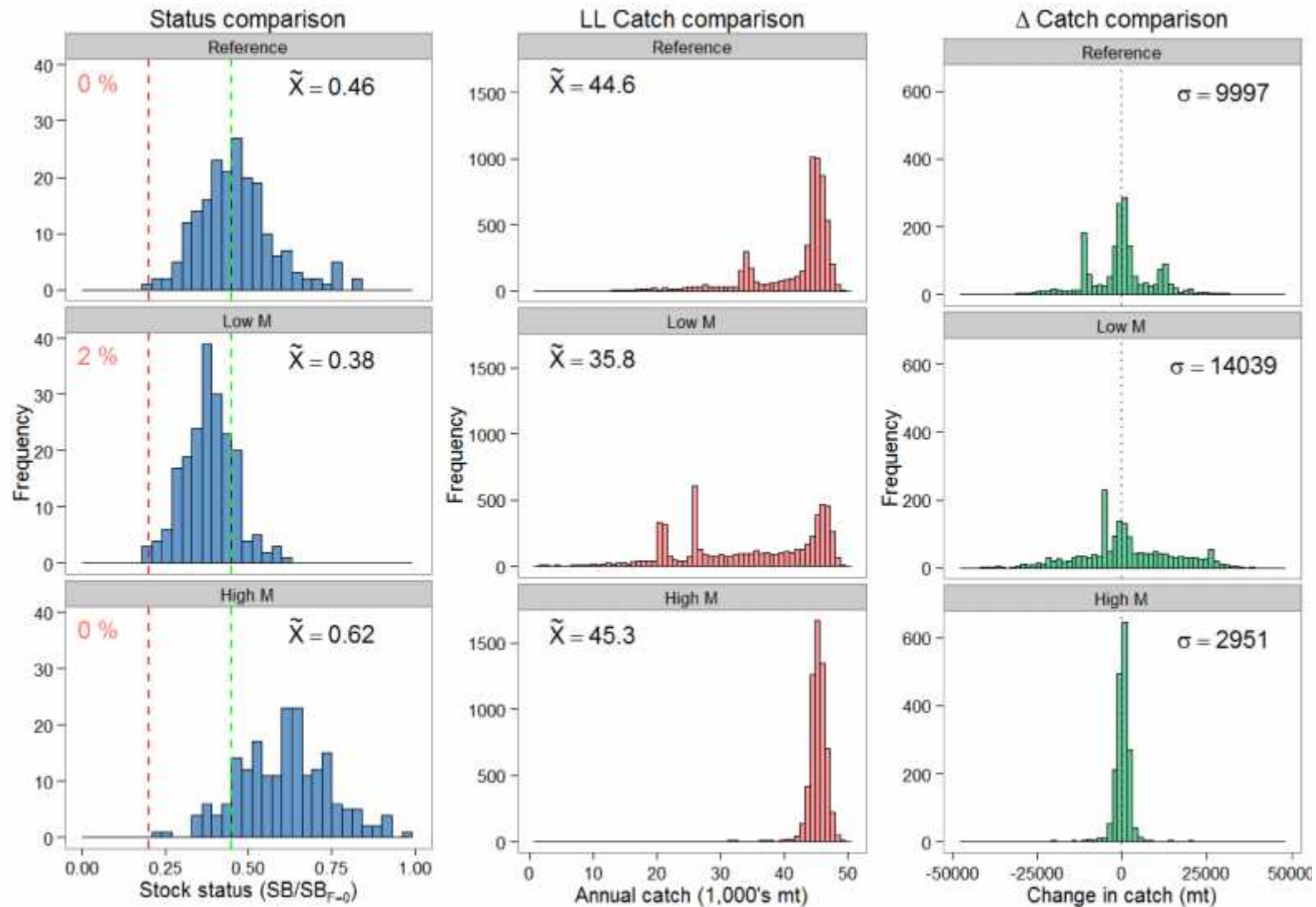
# Robustness testing

- As an example – alternative assumptions of natural mortality – lower (less productive) and higher (more productive)





# Robustness testing



# Notes for the future:

- Robust to different Ms?
  - Ok for risk
  - But very different implications for catch
- Need to discuss different forms of the HCR
- Need to consider performance measures
- Candidate TRPs will require a recovery period
  - Timescale? Economic implications (NPV)
  - Recovery plan vs ‘maintenance’ HCR