



**SCIENTIFIC COMMITTEE
ELEVENTH REGULAR SESSION**

Pohnpei, Federated States of Micronesia
5-13 August 2015

**ANNUAL REPORT TO THE COMMISSION
PART 1: INFORMATION ON FISHERIES, RESEARCH, AND STATISTICS**

WCPFC-SC11-AR/CNM-30

ECUADOR

ANNUAL REPORT TO THE COMMISSION
PART 1: INFORMATION ON FISHERIES, RESEARCH AND STATISTICS
ECUADOR YEAR 2014

Part 1 of the Annual Report is due one-month prior to the annual regular session of the Scientific Committee.

Part 1 of the Annual Report shall include the following, completed box at the front of the report.

Scientific data was provided to the Commission in accordance with the decision relating to the provision of scientific data to the Commission by 30 April 2014	YES
If no, please indicate the reason(s) and intended actions:	

ANNUAL FISHERIES INFORMATION

Essential information

I	Annual catch and effort by primary species and gear in the WCPFC Convention Area	YES
II	Number of vessels by gear type and size (fleet structure)	YES
III	Fishing patterns (catch by time/area)	Previous year; comparisons with earlier years
IV	Estimated total catches of non-target, associated and dependent species (if available)	N / A

Useful information

V	Developments / trends in the fishery (changes in fishing patterns, fleet operations, target species, level of transshipment, etc.)
VI	Associated socioeconomic factors (which may influence or explain the above trends)
VII	Disposal of catch (fresh/frozen/other)/market destination (export/domestic)
VIII	Onshore developments (processing plants, support facilities, etc.)
IX	Future prospects of the fishery (long term viability, expansion/contraction, etc.)

RESEARCH AND STATISTICS

X	Summary of observer and port sampling programmes (scientific data)
XI	Research activities (tuna, other species, species of special interest, oceanographic influences, etc.)
XII	Statistical data collection systems in use (describe)
XIII	Data coverage of catch, effort and size data for all species

Annex 1. Suggested layout for PART 1 of the Annual Report to the Commission

1*	ABSTRACT/SUMMARY
2*	Tabular Annual Fisheries Information (see below)
3*	Background
4*	Flag State Reporting
5	Coastal State Reporting
6	Socio-economic factors
7	Disposal of catch
8	Onshore developments
9	Future prospects of the fishery
10	Status of tuna fishery data collection systems
11	Research activities covering target and non-target species

CMM 2012-07

Annex 2. Guidelines for reporting templates for Part 1 report related to seabird fishery interactions

Table X: Effort, observed and estimated seabird captures by fishing year fpr (CMM) (South of 30°S; North of 23°N; or 23°N - 30°S). For each year, the tables gives the total number of hooks: the number of observer; observer coverage (the percentage of hook that were observed); the number of observed captures (both dead and alive); the capture rate (captures per thousand hook) and mitigation types used by the fleet.

Year	Fishing effort				Observed seabird captures	
	Number of vessels	Number of hooks	Observed hooks	% hooks observed	Number	Rate ²
2006		N/A				
2007						
2008						
2009						
2010						
2011						
2012						
2013						
2014						

Table Y: Number of observed seabird captures in (CCM) longline fisheries, 2014, by species and area.

Species	South of 30° S	North of 23° N	23° N - 30° S	Total
E.g. Antipodean albatross	N/A			
E.g. Gibson's albatross				
E.g. Unidentified albatross				
E.g. Fles footed shearwater				
E.g. Great winged petrel				
E.g. White chinned petrel				
E.g. Unidentified				
Total				

PROBEC-LTN/lsv

ECUADOR:

**TABULAR ANNUAL INFORMATION
(NATIONAL FLEET) FOR YEARS 2009 - 2014**

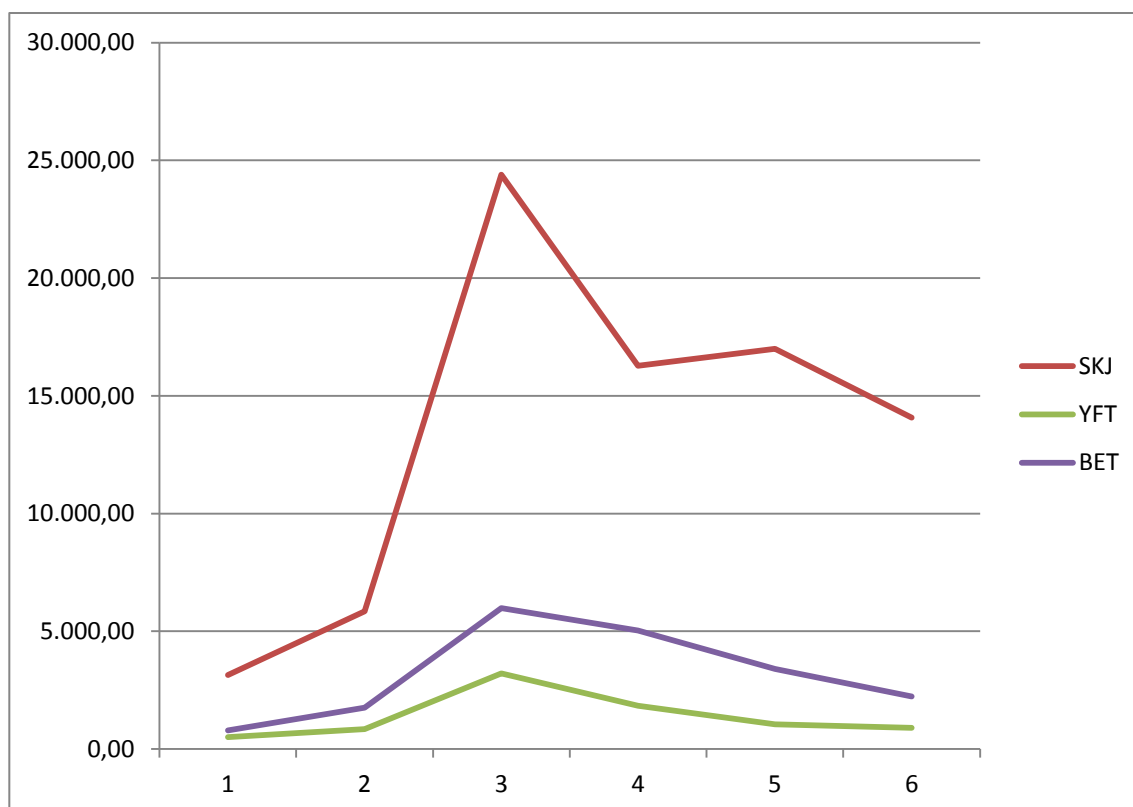
TABLE 1 ANNUAL CATCH AND EFFORT ESTIMATES, BY GEAR (*) AND PRIMARY SPECIES
2009 - 2014 M. TONS WCPFC CONVENTION AREA

YEAR	SKJ	YFT	BET	TOTAL
2009	3.136,73	504,93	787,00	4.428,66
2010	5.845,90	850,50	1.755,10	8.451,50
2011	24.393,00	3.212,30	5.985,20	33.590,50
2012	16.272,00	1.839,00	5.034,00	23.145,00
2013	16.991,00	1.046,00	3.405,00	21.442,00
2014	14.074,00	905,00	2.237,00	17.216,00

(*) PURSE SEINER

PROBEC

Table 1



1 = 2009; 2= 2010; 6 = 2014

Fig. 1

ECUADOR:

2009 - 2014 (YEARS)

TABLE 2

NUMBER OF NATIONAL VESSELS (PURSE SEINER) ACTIVE IN THE WCPFC CONVENTION AREA

	2009	2010	2011	2012	2013	2014
NUMBER OF VESSELS (*)	7	7	8	8	7	7

(*) PURSE SEINER

Table 2

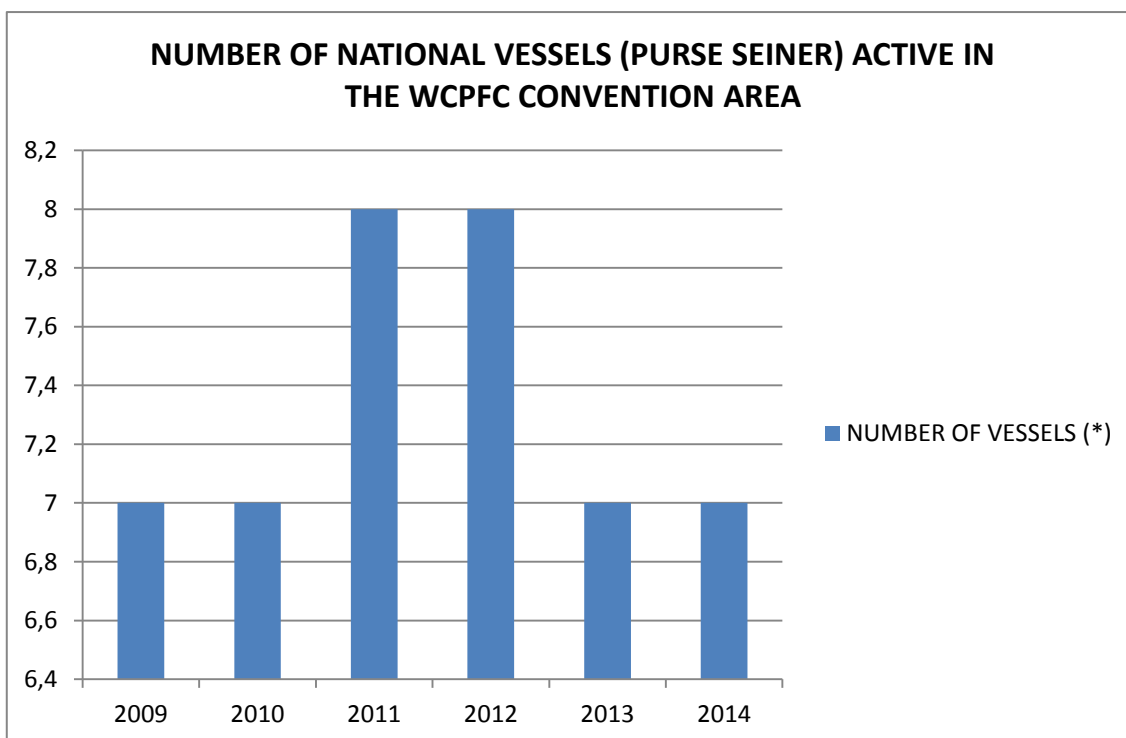


Fig. 2

ECUADOR:

2009 - 2014 (YEARS)

TABLE 3

**OBSERVED ANNUAL ESTIMATED CATCHES OF SPECIES OF ESPECIAL INTEREST
(SEABIRD, TURTLE AND MARINE MAMMALS) PURSE SEINER**

N/A

FIGURE 3

N/D

TABLE 4

**ANNUAL ESTIMATED CATCHES NON - TARGET ASSOCIATED AND DEPENDENT
SPECIES, INCLUDING SHARKS**

N/A

TABLE 5

**ESTIMATED ANNUAL COVERAGE OF OPERATIONAL CATH/EFFORT, PORT
SAMPLING AND OBSERVER DATA NATIONAL FLEET, ACTIVE IN THE WCPFC
CONVENTION AREA**

YEAR	COVERAGE OPER DATA	OBSERVER DATA
2009		
2010		
2011		
2012		
2013		
2014		