



NORTHERN COMMITTEE
ELEVENTH REGULAR SESSION
 31 August-3 September 2015
 Sapporo, Japan

PRELIMINARY ANALYSIS OF PACIFIC BLUEFIN TUNA IMPORT FROM KOREA IN 2015

WCPFC-NC11-2015/IP-05

1. Background

Korea exports most of Pacific Bluefin tuna (PBF) caught by its purse seine vessels in its EEZ.

According to the ISC catch statistics and the Japanese trade statistics, it was found out that around 89% of Pacific bluefin tuna caught by Korean vessels has been exported to Japan in 2014

Given such circumstances, Japan has started collecting detailed trade information on Pacific bluefin import from Korea since January 1st, 2010 and reported its findings to NC6 (WCPFC-NC6/DP-03).

This paper provides the current situation of Korean PBF exports to Japan by analyzing import data collected by July 31, 2015.

Table1: Korea's Catch/Export Ratio of PBFT

Year	Total Catch	Export to JPN	Export Ratio
2014		976 t	
2013	604 t	536 t	89%
2012	1,422 t	1,370 t	96%
2011	670 t	490 t	73%
2010	1,198 t	1,045 t	87%

source: ISC Japan's Trade statistics

*Data for 2014 is provisional

2. Summary

[In 2014, Jan.- Dec.]

- From **January 1 to December 31** of this year, **973.4 t** of Pacific bluefin tuna caught by **21 Korean purse seine vessels** in Korean EEZ were exported to Japan.
- **545.3 t** out of 973.4 - around 56 % - were caught by **5 purse seine vessels**.
- **341.4 t** were imported in **April** followed by in **March (280.9 t)** and in **June (171.7 t)**.
- Regarding size composition, **445.7 t (46 %)** were in **3-5 kg** category, **203.3 t (21 %)** were in **10-30 kg** category, and **187.4 t (19 %)** were in **2-3 kg** category.
- On average, it takes **2.6 days** from catch to Japanese Fish Markets.
- The port of shipment in Korea is the **port of Busan**, which is a major landing port for Korean purse seiners, and a major port of destination in Japan is the **port of Fukuoka**, where more than 87.4 % of the bluefin tuna imported from Korea were auctioned.
- Besides purse seine, 2,346 kg of PBF caught by trawl.

[In 2015, Jan.-July]

- From **January 1 to July 31** of this year, **556.2 t** of Pacific bluefin tuna caught by **21 Korean purse seine vessels** in Korean EEZ were exported to Japan.
- **489.2 t** out of 556.2 - around 88 % - were caught by **5 purse seine vessels**.
- **361.8 t** were imported in **April** followed by in **March (98.4 t)** and in **January (75.9 t)**.
- Regarding size composition, **420.1 t (76%)** were in **10-30 kg** category, **56.9 t (10%)** were in **5-10 kg** category, and

47.1 t (8%) were in 3-5 kg category.

- On average, it takes 2.8 days from catch to Japanese Fish Markets.
- The port of shipment in Korea is the port of Busan, which is a major landing port for Korean purse seiners, and a major port of destination in Japan is the port of Fukuoka, where more than 81.6% of the bluefin tuna imported from Korea were auctioned.

3. Details in 2015

(1) Reporting Requirement for importers and wholesalers

Starting on January 1, 2010, importers and wholesalers, engaged in Pacific bluefin tuna trade from Korea to Japan, must present a trade and/or sales report to the Japanese Fisheries Agency (JFA) for each transaction, in accordance with Article 10, the Special Law for Conservation and Management of Tuna Resources. The reporting format was revised and became effective on March 11, 2011 to acquire more detailed size information; former 5-50 kg category was divided into three categories, 5-10 kg, 10-30 kg, and 30-50 kg.

(2) Information Obtained

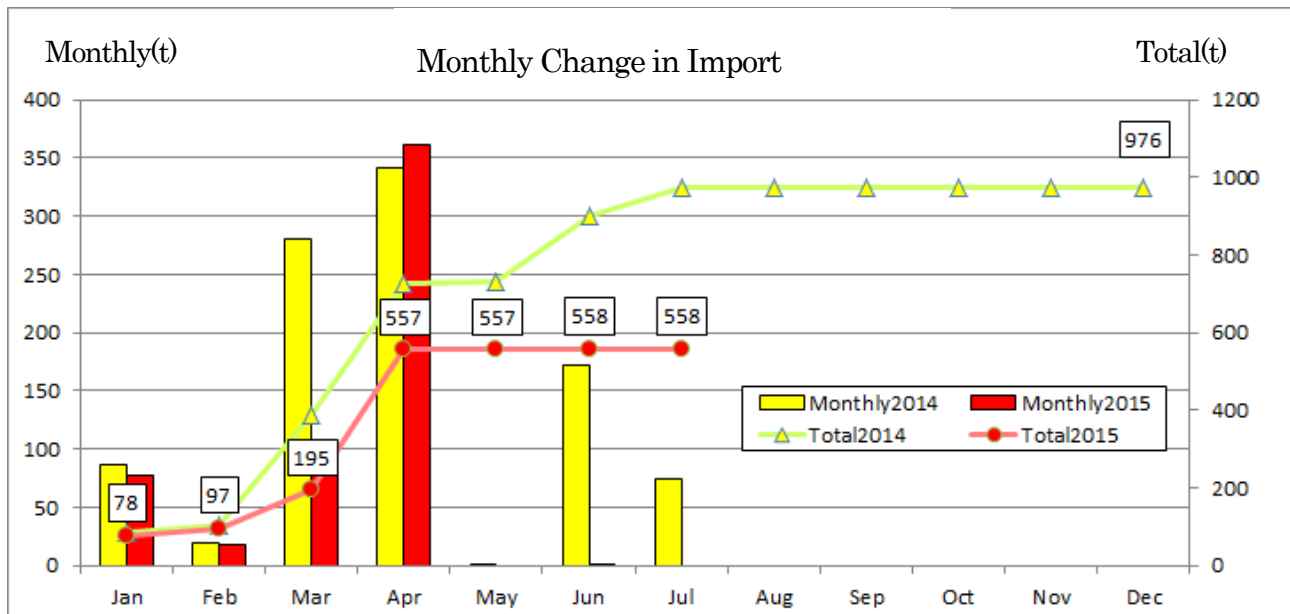
- **Number of Imports and Their Volume**

During the period from January 1st to July 31st, the total number of import transactions was 119 and 558.3 t; all of the imports were in RD fashion (Attachment A).

- **Monthly Change in Import**

The amount of import by month was as follows:

January: 78.1 t; February: 18.7 t; March :98.4 t; April: 361.8 t; May: 0 t; June: 1.3 t



- **Size Composition**

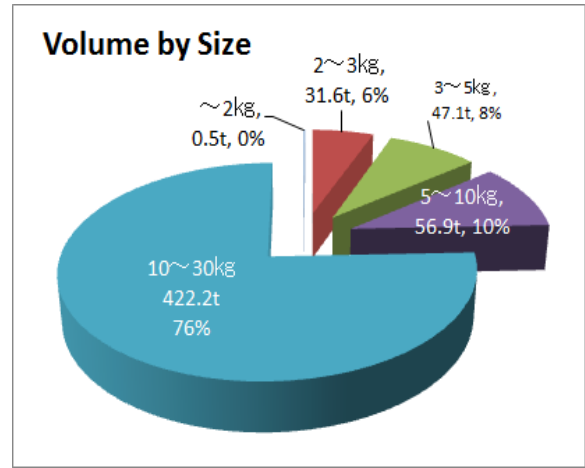
Regarding size composition, 422.2 t (76%) were in 10-30 kg category, 56.9 t (10%) were in 5-10 kg category, and 47.1 t (8%) were in 3-5 kg category.

- **Vessels Information**

According to the trade reports, 556.2 t of PBF caught by 21 Korean purse seine vessels was exported to Japan. In addition, 489.2 t out of 556.2 t (88 %) was caught by 5 purse seiners:

Vessel A: 205.0 t, Vessel B: 109.3 t, Vessel C: 74.1 t, Vessel D: 52.1 t, Vessel E: 48.7 t

Accumulated fishing days were 72 days, and the average catch of one fishing day was around 7.7 t. However, the average catch of the 5 vessels above was 18.8 t, while the figure for the rest of 16 vessels was 1.5 t.



- **Transportation**

All of the import products were transported by marine freights such as commercial ferries and fish carriers from the port of Busan, Korea, mostly to Fukuoka, Japan. The average time from catch to import was 2.8 days ranging from 1 to 7 days. About 81.6 % of the imported products were auctioned at two fish markets in Fukuoka, and distributed to other areas. **Attachment B** illustrates the geographic relations between fishing ground and major ports.