



**SCIENTIFIC COMMITTEE
ELEVENTH REGULAR SESSION**

Pohnpei, Federated States of Micronesia
5-13 August 2015

ESTIMATES OF ANNUAL CATCHES IN THE WCPFC STATISTICAL AREA

WCPFC-SC11-2015/ST IP-1

Paper prepared by

Oceanic Fisheries Programme (OFP)
Secretariat of the Pacific Community (SPC)
Noumea, New Caledonia

Introduction

Estimates of annual catches in the WCPFC Statistical Area (Figure 1) are presented for target tuna species, i.e., albacore (*Thunnus alalunga*) bigeye (*Thunnus obesus*), skipjack (*Katsuwonus pelamis*) and yellowfin (*Thunnus albacares*), and major billfish species, i.e., black marlin (*Makaira indica*), blue marlin (*Makaira mazara*), striped marlin (*Tetrapturus audax*) and swordfish (*Xiphias gladius*). Estimates of catches of southern bluefin tuna (*Thunnus maccoyii*) are compiled by the Commission for the Conservation of Southern Bluefin Tuna (CCSBT).

Target Tuna Species

Tables 1–7 and Figures 2 and 3 present estimates of annual catches of target tunas in the WCPFC Statistical Area. For a breakdown of recent catch estimates by gear and flag, see WCPFC (2014). For discussion regarding trends, see Williams & Terawasi (2015).

Recent studies using observer data (e.g. Lawson, 2007, Lawson, 2010, Lawson, 2012, Hampton and Williams, 2011, Hampton and Williams, 2015) show that the logsheet-reported catch, mainly for associated sets, should contain higher quantities of yellowfin and bigeye tuna that have been misreported as skipjack tuna. Purse-seine catch estimates that have been adjusted with species compositions determined from observer grab samples corrected for size selectivity bias (see Lawson, 2010, Lawson, 2012 and Lawson, 2013) are presented as the official purse-seine catch estimates in Table 5. All composite tables and figures referring to purse-seine species catch are consistent with the Table 5 estimates of purse-seine catches of skipjack, yellowfin and bigeye tuna.

Tables 7–10 present estimates of annual catches of target tunas in the WCPO Area and the EPO Area (Figure 1) by gear type. Tables 11–13 present estimates of annual catches of target tunas for the WCPO, the EPO and the Pacific Ocean by species. Table 14 and 15, and Figures 4 and 5 present global catches of target tunas, by species and ocean area, respectively.

Tuna Discards

Observer data have been used to determine the discard rates for albacore, bigeye and yellowfin and bigeye caught by longliners (Table 16) and skipjack, yellowfin and bigeye caught by purse seiners (Table 17).

Tuna discards by longliners in the WCPFC Statistical Area during 1994–2014 were estimated by applying discard rates by flag and year, determined from observer data, to tuna species catch estimates, by flag and year, and then summing the tuna discards (by species) across all flags. Discard rates for flag/year combinations where there were insufficient data (defined as (i) less than 10 observer trips or (ii) less than 500 fish samples available), were substituted with discard rates determined for year (with all flags combined). The total discard rate for the three target tuna species caught by longliners during the period was 2.2%. During 2014, the estimated tuna discard was 0.4% and based on available observer data, most of the bigeye and yellowfin tuna discards comprised of fish less than 85 cm (Figures 6 and 7).

Tuna discards by purse seiners in the WCPFC Statistical Area during 1995–2014 were estimated by applying discard rates by flag, year and school association (unassociated and associated), determined from observer data, to tuna species catch estimates, by flag, year and school association, and then summing the tuna discards (by species) across all flags. Discard rates for flag/year/school association combinations where there were insufficient data (defined as (i) less than 5 observer trips or (ii) less than 1,000 mt of catch observed), were substituted with discard rates determined for school association (with all years/flags combined) for years prior to 2008, and substituted with discard rates determined for year/school association (with all flags combined) for years since 2008. This method was used since an analysis of variance of discard rates for skipjack, yellowfin and bigeye caught by purse seiners indicated that species, school association and flag, but not year, were significant predictors. However, in recent years, there have been management measures (CMM 2009-02) introduced to restrict the discard of tuna which means that the year effect has been considered in the estimation process for recent years. The total discard rate for the three target tuna species caught by purse seiners during the period was 2.5%, with an estimated 3.0% discarded in 2014. [Note that

the reporting of purse-seine discards by vessel is a requirement under CMM 2009-02 and is independent to the estimates produced in this paper].

Major Billfish Species

Table 18 presents estimates of commercial catches of the four major billfish species by gear type. Table 19 and Figure 8 present estimates of the major billfish catches for all gear types combined. Tables 20 and 21 present estimates of commercial catches of striped marlin and swordfish in the WCPFC Statistical Area north and south of the equator respectively. Table 22 present estimates of commercial catches of albacore, striped marlin and swordfish in the Pacific Ocean, south of the equator.

REFERENCES

- Hampton J. & P.G. Williams 2011. Misreporting of purse seine catches of skipjack and yellowfin-bigeye on logsheets. Working Paper ST-WP-2. Seventh Regular Session of the Scientific Committee of the WCPFC. Pohnpei, FSM. 9th-17th August 2011.
- Hampton J. & P.G. Williams 2015. ANNUAL ESTIMATES OF PURSE SEINE CATCHES BY SPECIES BASED ON ALTERNATIVE DATA SOURCES AND A REVIEW OF CURRENT PURSE-SEINE CATCH ESTIMATION ISSUES AND FUTURE PLANS. Working Paper ST-WP-2. Overview of tuna fisheries in the Western and Central Pacific Ocean, Including Economic Conditions – 2014. Working Paper GN-WP-1. Eleventh Regular Session of the Scientific Committee of the WCPFC. Pohnpei, Federated States of Micronesia. 6–13 August 2015.
- Harley S. & P.G. Williams 2013. Fishery indicators for bigeye, skipjack, and yellowfin tunas in the WCPO, and swordfish in the southern WCPO. Working Paper SA-WP-6. Ninth Regular Session of the Scientific Committee of the WCPFC. Pohnpei, FSM. 6–14 August 2013. Oceanic Fisheries Programme, Secretariat of the Pacific Community, Noumea, New Caledonia
- Lawson, T.A. 2007. Further analysis of the proportion of bigeye in ‘yellowfin plus bigeye’ caught by purse seiners in the WCPFC Statistical Area. Information Paper ST-IP-5. Third Regular Session of the WCPFC Scientific Committee, 13–24 August 2006, Honolulu, Hawaii, United States of America. Oceanic Fisheries Programme, Secretariat of the Pacific Community, Noumea, New Caledonia.
- Lawson, T.A. 2010. Update on the estimation of selectivity bias based on paired spill and grab samples collected by observers on purse seiners in the Western and Central Pacific Ocean. Working Paper ST-WP-2. Sixth Regular Session of the Scientific Committee of the WCPFC. Nuku’alofa, Tonga. 10–19 August 2010.
- Lawson, T.A. 2012. Estimation of the species composition of the catch by purse seiners in the Western and Central Pacific Ocean using grab samples and spill samples collected by observers. Working Paper ST-WP-3. Eighth Regular Session of the Scientific Committee of the WCPFC. Busan, Republic of Korea. 7–15 August 2012.
- Lawson, T.A. 2013. Estimation of the species composition of the catch by purse seiners in the Western and Central Pacific Ocean – a response to recent independent reviews. Working Paper ST-WP-3. Ninth Regular Session of the Scientific Committee of the WCPFC. Pohnpei, FSM. 6–14 August 2013.
- WCPFC. 2014. WCPFC Tuna Fishery Yearbook, 2013. Western and Central Pacific Fisheries Commission, Pohnpei, Federated States of Micronesia.
- Williams, P. & P. Terawasi. 2015. Overview of tuna fisheries in the Western and Central Pacific Ocean, Including Economic Conditions – 2014. Working Paper GN-WP-1. Eleventh Regular Session of the Scientific Committee of the WCPFC. Pohnpei, Federated States of Micronesia. 6–13 August 2015. Oceanic Fisheries Programme, Secretariat of the Pacific Community, Noumea, New Caledonia and Pacific Islands Forum Fisheries Agency, Honiara, Solomon Islands.

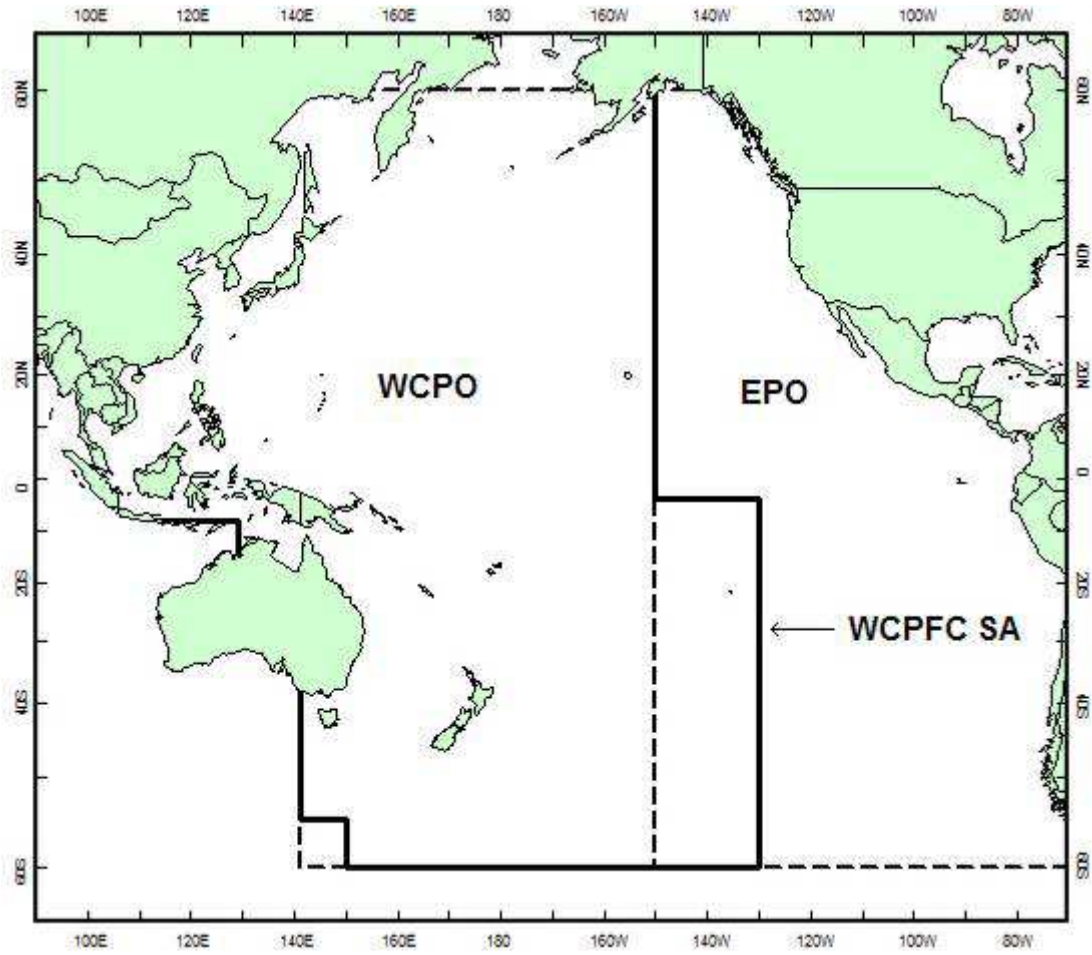


Figure 1. WCPFC Statistical Area (WCPFC SA), the Western and Central Pacific Ocean (WCPO) Area and the Eastern Pacific Ocean (EPO) Area

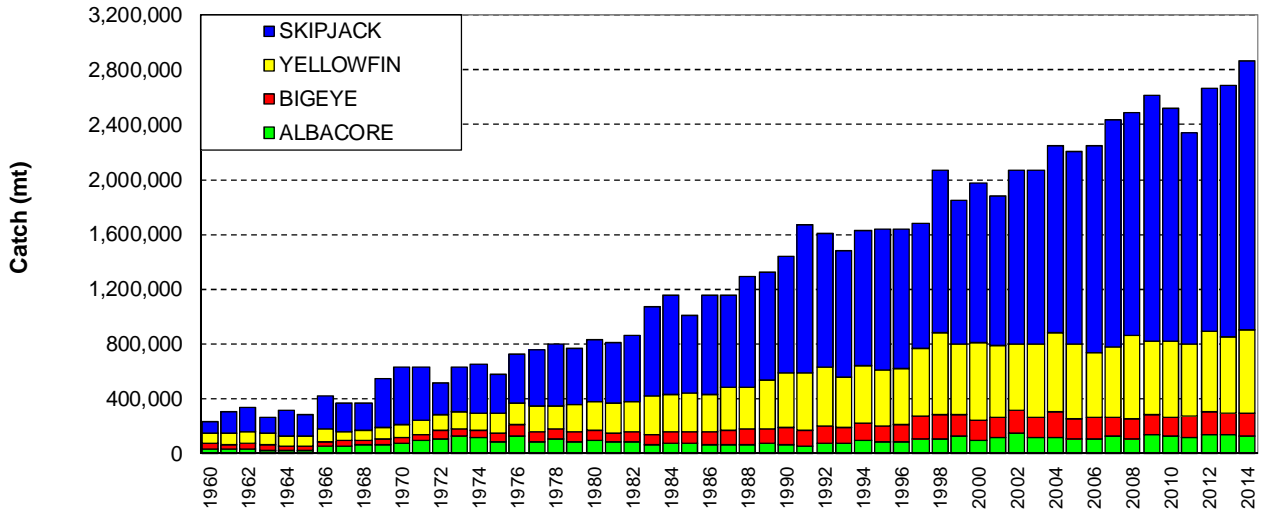


Figure 2. Catches of tuna in the WCPFC Statistical Area, by species

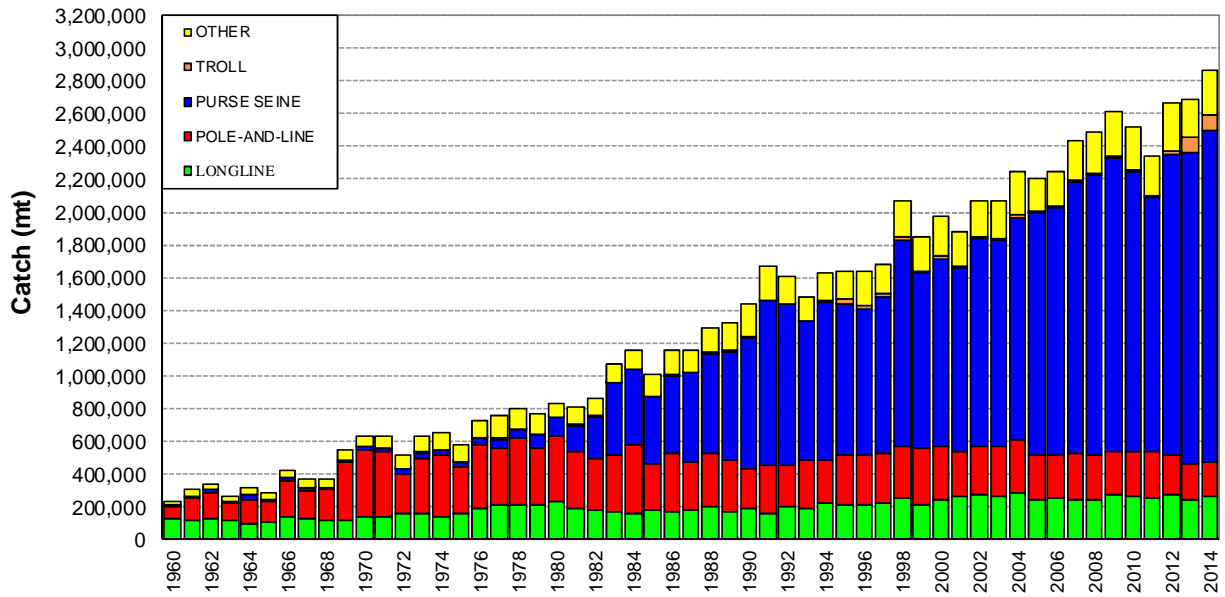


Figure 3. Catches of tuna in the WCPFC Statistical Area, by gear type

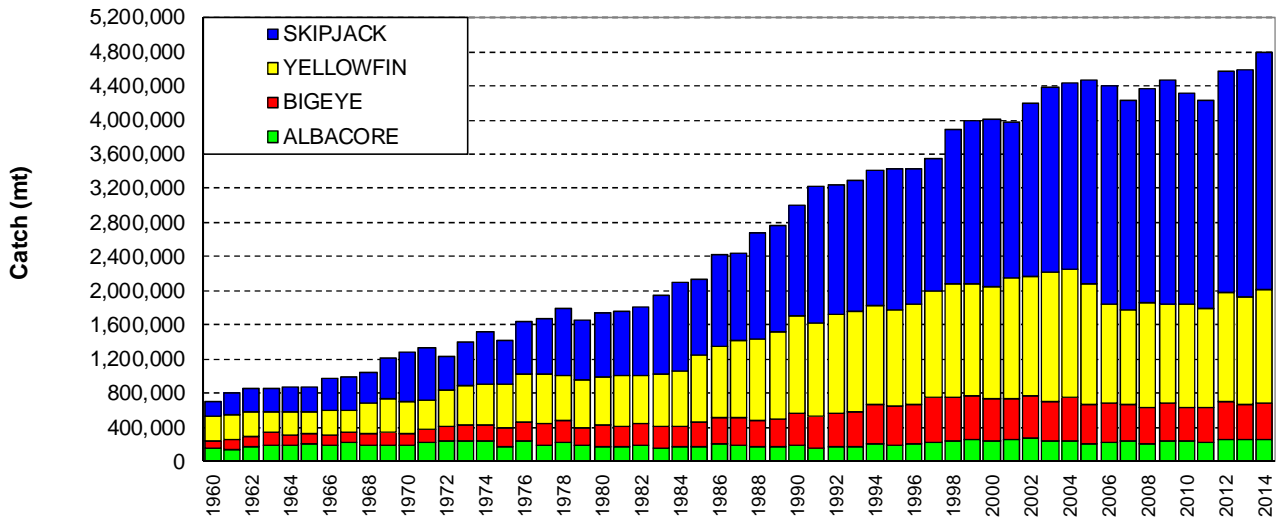


Figure 4. Global catches of tuna, by species

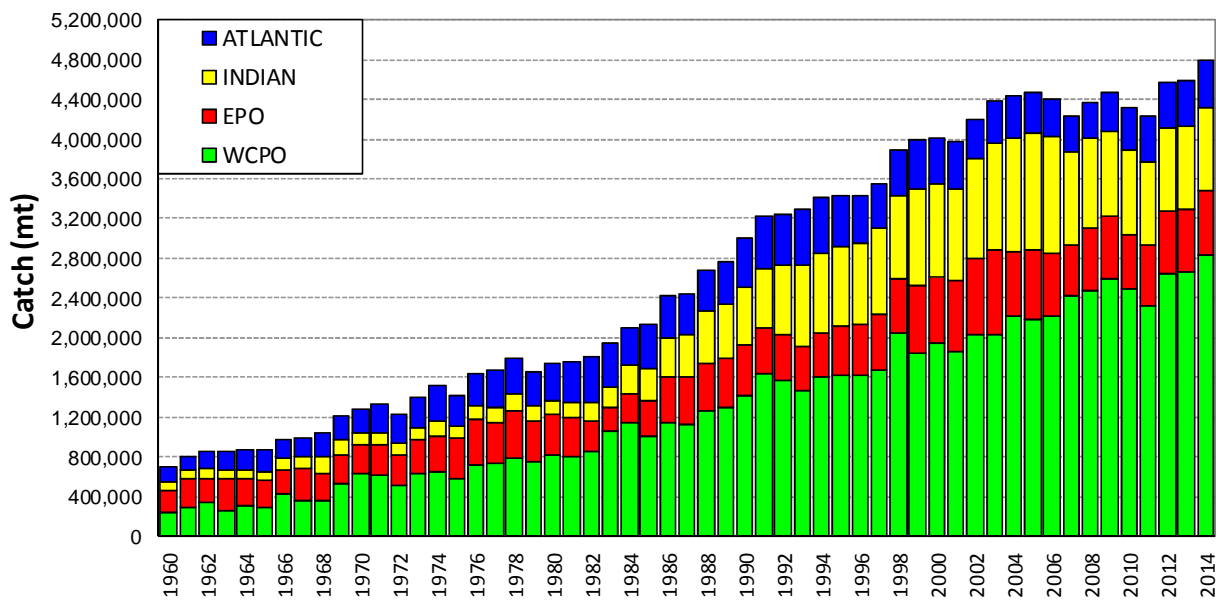


Figure 5. Global catches of tuna, by ocean area

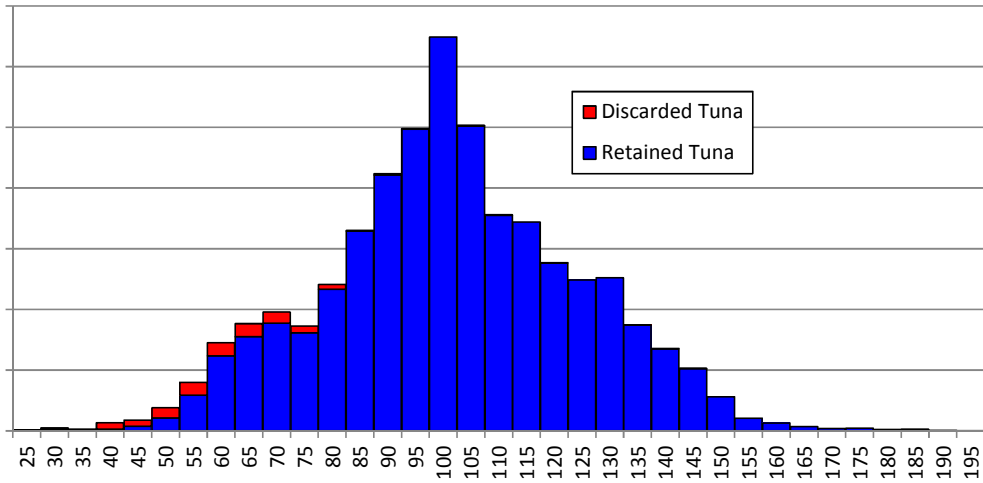


Figure 6. Longline bigeye tuna discard by size categories, 2014.
 (Based on available unweighted, observer data)

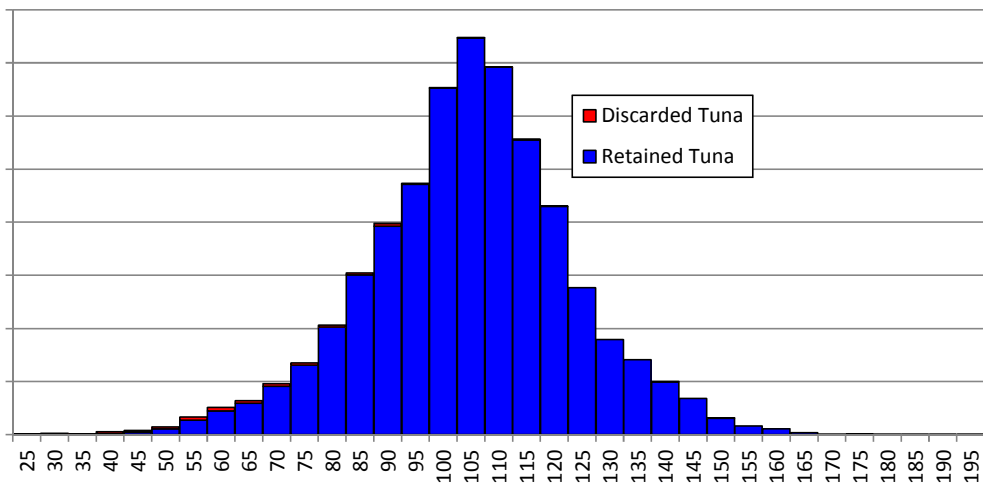


Figure 7. Longline yellowfin tuna discard by size categories, 2014.
 (Based on available unweighted, raw observer data)

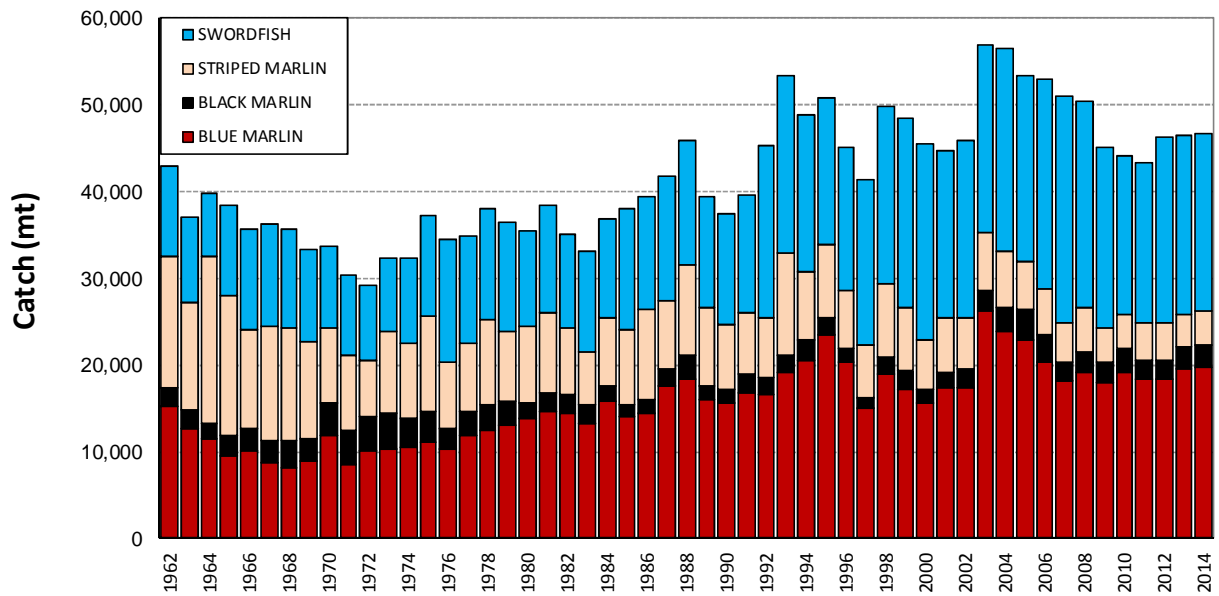


Figure 9. Commercial catches of major billfish species in the WCPFC Statistical Area

Table 1. Catches of target tunas in the WCPFC Statistical Area, by species

YEAR	ALBACORE		BIGEYE		SKIPJACK		YELLOWFIN		TOTAL
	TONNES	%	TONNES	%	TONNES	%	TONNES	%	
1960	31,463	13	45,025	19	89,938	37	73,667	31	240,093
1961	32,922	11	39,380	13	156,736	51	75,438	25	304,476
1962	37,602	11	36,868	11	181,624	53	83,944	25	340,038
1963	26,815	10	44,346	16	122,703	46	75,756	28	269,620
1964	26,687	8	32,391	10	182,918	58	74,154	23	316,150
1965	28,735	10	31,333	11	155,221	54	73,635	25	288,924
1966	52,284	12	33,187	8	249,514	58	93,099	22	428,084
1967	58,822	16	36,749	10	204,840	55	68,929	19	369,340
1968	64,213	17	30,426	8	195,031	52	81,904	22	371,574
1969	72,106	13	34,361	6	351,031	64	87,278	16	544,776
1970	74,350	12	40,102	6	423,398	66	99,169	16	637,019
1971	100,737	16	43,233	7	380,853	60	105,152	17	629,975
1972	109,655	21	57,156	11	237,764	46	116,210	22	520,785
1973	131,149	21	48,855	8	328,748	52	128,522	20	637,274
1974	115,162	18	52,808	8	356,200	54	131,545	20	655,715
1975	84,651	15	69,360	12	288,310	49	141,391	24	583,712
1976	132,947	18	82,752	11	357,207	49	153,111	21	726,017
1977	83,171	11	83,315	11	403,610	54	184,009	24	754,105
1978	111,161	14	66,513	8	449,032	56	177,645	22	804,351
1979	86,007	11	73,626	10	412,551	53	199,436	26	771,620
1980	95,156	11	72,556	9	451,309	54	218,317	26	837,338
1981	88,095	11	64,173	8	434,972	54	221,970	27	809,210
1982	89,496	10	71,971	8	478,548	56	222,049	26	862,064
1983	65,988	6	77,386	7	650,353	61	276,537	26	1,070,264
1984	74,540	6	85,753	7	726,663	63	274,050	24	1,161,006
1985	77,060	8	88,525	9	567,271	56	282,572	28	1,015,428
1986	71,757	6	93,584	8	724,318	63	264,329	23	1,153,988
1987	63,645	6	109,490	9	668,034	58	311,853	27	1,153,022
1988	67,948	5	110,177	9	805,570	62	309,936	24	1,293,631
1989	73,533	6	109,424	8	781,365	59	357,045	27	1,321,367
1990	63,872	4	126,032	9	854,152	59	398,144	28	1,442,200
1991	58,322	3	111,669	7	1,073,172	64	425,629	26	1,668,792
1992	74,452	5	130,394	8	968,768	60	431,956	27	1,605,570
1993	77,496	5	110,932	7	923,776	62	372,177	25	1,484,381
1994	96,461	6	127,740	8	987,249	61	414,546	25	1,625,996
1995	91,750	6	115,158	7	1,019,683	62	408,264	25	1,634,855
1996	91,140	6	118,667	7	1,017,341	62	411,879	25	1,639,027
1997	112,900	7	160,195	10	910,053	54	498,039	30	1,681,187
1998	112,465	5	174,781	8	1,176,241	57	601,622	29	2,065,109
1999	131,066	7	154,553	8	1,052,566	57	513,654	28	1,851,839
2000	101,171	5	142,228	7	1,163,130	59	566,039	29	1,972,568
2001	121,561	6	145,491	8	1,089,420	58	528,484	28	1,884,956
2002	147,793	7	166,237	8	1,267,002	61	483,438	23	2,064,470
2003	122,949	6	140,531	7	1,263,462	61	539,628	26	2,066,570
2004	122,343	5	190,145	8	1,357,261	60	575,213	26	2,244,962
2005	105,135	5	148,346	7	1,404,443	64	547,574	25	2,205,498
2006	104,986	5	157,829	7	1,505,961	67	479,788	21	2,248,564
2007	126,701	5	142,605	6	1,657,565	68	511,711	21	2,438,582
2008	104,966	4	151,235	6	1,629,258	65	603,244	24	2,488,703
2009	135,476	5	149,874	6	1,793,700	69	537,301	21	2,616,351
2010	126,548	5	137,719	5	1,695,584	67	554,807	22	2,514,658
2011	116,296	5	160,163	7	1,540,313	66	519,573	22	2,336,345
2012	142,963	5	163,440	6	1,774,705	66	588,050	22	2,669,158
2013	143,228	5	154,019	6	1,842,485	68	551,149	20	2,690,881
2014	132,849	5	161,299	6	1,957,693	68	608,807	21	2,860,648

Table 2. Catches of target tunas in the WCPFC Statistical Area, by gear type

YEAR	LONGLINE		POLE-AND-LINE		PURSE SEINE		TROLL		OTHER		TOTAL
	TONNES	%	TONNES	%	TONNES	%	TONNES	%	TONNES	%	
1960	129,874	54	73,800	31	5,224	2	0	0	31,195	13	240,093
1961	123,330	41	132,070	43	14,540	5	0	0	34,536	11	304,476
1962	128,804	38	157,412	46	18,875	6	0	0	34,947	10	340,038
1963	122,263	45	98,628	37	11,934	4	0	0	36,795	14	269,620
1964	102,481	32	143,323	45	29,012	9	0	0	41,334	13	316,150
1965	103,955	36	134,621	47	8,621	3	0	0	41,727	14	288,924
1966	145,278	34	218,900	51	16,913	4	0	0	46,993	11	428,084
1967	128,047	35	174,774	47	14,508	4	5	0	52,006	14	369,340
1968	120,136	32	183,954	50	15,143	4	14	0	52,327	14	371,574
1969	122,806	23	354,784	65	9,483	2	0	0	57,703	11	544,776
1970	141,360	22	409,754	64	16,222	3	50	0	69,633	11	637,019
1971	143,625	23	392,914	62	24,511	4	0	0	68,925	11	629,975
1972	161,533	31	242,745	47	29,030	6	268	0	87,209	17	520,785
1973	166,399	26	330,841	52	36,269	6	484	0	103,281	16	637,274
1974	145,192	22	370,499	57	29,548	5	898	0	109,578	17	655,715
1975	164,049	28	279,663	48	27,685	5	646	0	111,669	19	583,712
1976	198,013	27	382,627	53	40,770	6	25	0	104,582	14	726,017
1977	218,413	29	345,257	46	53,492	7	621	0	136,322	18	754,105
1978	212,059	26	407,482	51	52,040	6	1,686	0	131,084	16	804,351
1979	211,221	27	344,799	45	90,102	12	814	0	124,684	16	771,620
1980	230,625	28	398,498	48	116,757	14	1,489	0	89,969	11	837,338
1981	191,732	24	348,917	43	158,559	20	2,118	0	107,884	13	809,210
1982	179,575	21	316,457	37	255,490	30	2,552	0	107,990	13	862,064
1983	175,498	16	342,287	32	442,152	41	949	0	109,378	10	1,070,264
1984	162,111	14	415,016	36	462,277	40	3,124	0	118,478	10	1,161,006
1985	177,722	18	287,892	28	409,534	40	3,468	0	136,812	13	1,015,428
1986	169,129	15	360,864	31	474,838	41	2,284	0	146,873	13	1,153,988
1987	179,966	16	294,879	26	543,978	47	2,350	0	131,849	11	1,153,022
1988	200,774	16	327,997	25	608,996	47	4,671	0	151,193	12	1,293,631
1989	170,876	13	311,981	24	664,659	50	8,687	1	165,164	12	1,321,367
1990	188,842	13	247,104	17	795,527	55	7,219	1	203,508	14	1,442,200
1991	160,889	10	290,006	17	1,006,764	60	8,004	0	203,129	12	1,668,792
1992	199,688	12	259,762	16	975,740	61	6,844	0	163,536	10	1,605,570
1993	195,377	13	293,014	20	846,116	57	4,612	0	145,262	10	1,484,381
1994	221,367	14	262,721	16	971,565	60	7,493	0	162,850	10	1,625,996
1995	217,417	13	298,301	18	927,490	57	23,585	1	168,062	10	1,634,855
1996	215,466	13	301,279	18	896,443	55	17,807	1	208,032	13	1,639,027
1997	226,375	13	298,666	18	959,215	57	18,732	1	178,199	11	1,681,187
1998	251,197	12	323,645	16	1,257,389	61	19,099	1	213,779	10	2,065,109
1999	219,024	12	338,480	18	1,068,959	58	13,476	1	211,900	11	1,851,839
2000	247,904	13	319,854	16	1,143,295	58	25,845	1	235,670	12	1,972,568
2001	264,291	14	272,483	14	1,118,919	59	17,329	1	211,934	11	1,884,956
2002	281,369	14	286,202	14	1,265,453	61	16,129	1	215,317	10	2,064,470
2003	261,346	13	303,905	15	1,258,226	61	19,875	1	223,218	11	2,066,570
2004	284,782	13	322,179	14	1,354,242	60	23,445	1	260,314	12	2,244,962
2005	250,167	11	266,735	12	1,479,331	67	13,293	1	195,972	9	2,205,498
2006	255,328	11	257,594	11	1,512,945	67	10,098	0	212,599	9	2,248,564
2007	245,129	10	284,661	12	1,655,499	68	9,249	0	244,044	10	2,438,582
2008	245,495	10	269,551	11	1,709,352	69	11,740	0	252,565	10	2,488,703
2009	279,027	11	264,350	10	1,785,790	68	9,898	0	277,286	11	2,616,351
2010	270,074	11	270,123	11	1,703,131	68	11,320	0	260,010	10	2,514,658
2011	260,201	11	275,070	12	1,549,770	66	11,973	1	239,331	10	2,336,345
2012	271,954	10	242,958	9	1,841,237	69	14,018	1	298,991	11	2,669,158
2013	242,727	9	221,715	8	1,899,013	71	88,870	3	238,556	9	2,690,881
2014	268,795	9	203,736	7	2,020,627	71	103,177	4	264,313	9	2,860,648

Table 3. LONGLINE catches in the WCPFC Statistical Area, by species

YEAR	ALBACORE		BIGEYE		SKIPJACK		YELLOWFIN		TOTAL
	TONNES	%	TONNES	%	TONNES	%	TONNES	%	
1960	31,387	24	43,467	33	0	0	55,020	42	129,874
1961	32,647	26	37,517	30	0	0	53,166	43	123,330
1962	37,358	29	35,895	28	4	0	55,547	43	128,804
1963	26,538	22	42,540	35	0	0	53,185	44	122,263
1964	26,240	26	30,989	30	5	0	45,247	44	102,481
1965	28,603	28	29,848	29	11	0	45,493	44	103,955
1966	51,588	36	31,984	22	52	0	61,654	42	145,278
1967	58,208	45	33,632	26	124	0	36,083	28	128,047
1968	46,226	38	27,757	23	83	0	46,070	38	120,136
1969	38,478	31	32,571	27	130	0	51,627	42	122,806
1970	48,981	35	34,965	25	1,608	1	55,806	39	141,360
1971	46,025	32	38,359	27	1,475	1	57,766	40	143,625
1972	47,774	30	51,040	32	1,544	1	61,175	38	161,533
1973	59,835	36	42,412	25	1,861	1	62,291	37	166,399
1974	39,299	27	45,653	31	2,124	1	58,116	40	145,192
1975	31,180	19	61,488	37	1,919	1	69,462	42	164,049
1976	45,022	23	73,325	37	2,096	1	77,570	39	198,013
1977	48,789	22	72,083	33	3,127	1	94,414	43	218,413
1978	42,260	20	56,364	27	3,233	2	110,202	52	212,059
1979	36,295	17	63,837	30	2,179	1	108,910	52	211,221
1980	42,343	18	62,537	27	632	0	125,113	54	230,625
1981	47,272	25	46,590	24	756	0	97,114	51	191,732
1982	43,876	24	48,578	27	972	1	86,149	48	179,575
1983	36,784	21	46,311	26	2,144	1	90,259	51	175,498
1984	31,277	19	52,976	33	870	1	76,988	47	162,111
1985	38,012	21	58,629	33	1,108	1	79,973	45	177,722
1986	41,702	25	56,989	34	1,439	1	68,999	41	169,129
1987	33,398	19	68,832	38	2,329	1	75,407	42	179,966
1988	41,694	21	68,288	34	1,937	1	88,855	44	200,774
1989	30,147	18	64,916	38	2,507	1	73,306	43	170,876
1990	32,170	17	77,009	41	363	0	79,300	42	188,842
1991	35,459	22	61,033	38	885	1	63,512	39	160,889
1992	45,551	23	75,966	38	432	0	77,739	39	199,688
1993	56,183	29	66,566	34	573	0	72,055	37	195,377
1994	59,629	27	79,175	36	379	0	82,184	37	221,367
1995	60,388	28	68,125	31	598	0	88,306	41	217,417
1996	61,590	29	58,054	27	3,935	2	91,887	43	215,466
1997	72,643	32	68,597	30	4,070	2	81,065	36	226,375
1998	80,042	32	85,048	34	5,030	2	81,077	32	251,197
1999	68,834	31	74,959	34	4,208	2	71,023	32	219,024
2000	69,582	28	76,912	31	4,559	2	96,851	39	247,904
2001	85,022	32	78,670	30	5,059	2	95,540	36	264,291
2002	89,894	32	92,381	33	3,450	1	95,644	34	281,369
2003	78,794	30	83,016	32	3,824	1	95,712	37	261,346
2004	76,967	27	99,705	35	4,051	1	104,059	37	284,782
2005	83,069	33	78,597	31	1,084	0	87,417	35	250,167
2006	85,246	33	83,560	33	1,528	1	84,994	33	255,328
2007	80,170	33	81,350	33	1,175	0	82,434	34	245,129
2008	79,039	32	82,016	33	803	0	83,637	34	245,495
2009	99,128	36	79,736	29	1,219	0	98,944	35	279,027
2010	103,466	38	71,224	26	1,191	0	94,193	35	270,074
2011	85,817	33	76,647	29	1,124	0	96,613	37	260,201
2012	100,583	37	82,419	30	2,004	1	86,948	32	271,954
2013	100,792	42	64,240	26	1,267	1	76,428	31	242,727
2014	91,414	34	73,898	27	1,931	1	101,552	38	268,795

Table 4. POLE-AND-LINE catches in the WCPFC Statistical Area, by species

YEAR	ALBACORE		BIGEYE		SKIPJACK		YELLOWFIN		TOTAL
	TONNES	%	TONNES	%	TONNES	%	TONNES	%	
1960	0	0	1,500	2	70,428	95	1,872	3	73,800
1961	0	0	1,800	1	127,011	96	3,259	2	132,070
1962	0	0	800	1	152,387	97	4,225	3	157,412
1963	0	0	1,800	2	94,757	96	2,071	2	98,628
1964	0	0	1,143	1	137,106	96	5,074	4	143,323
1965	0	0	1,254	1	129,933	97	3,434	3	134,621
1966	0	0	1,108	1	215,600	98	2,192	1	218,900
1967	0	0	2,803	2	168,846	97	3,125	2	174,774
1968	16,597	9	2,272	1	162,379	88	2,706	1	183,954
1969	32,148	9	1,675	0	315,795	89	5,166	1	354,784
1970	24,485	6	1,589	0	379,074	93	4,606	1	409,754
1971	53,451	14	931	0	333,284	85	5,248	1	392,914
1972	60,691	25	1,762	1	172,827	71	7,465	3	242,745
1973	68,908	21	1,258	0	253,217	77	7,458	2	330,841
1974	73,676	20	1,039	0	289,202	78	6,582	2	370,499
1975	52,257	19	1,334	0	218,271	78	7,801	3	279,663
1976	85,436	22	3,423	1	276,582	72	17,186	4	382,627
1977	32,034	9	3,325	1	294,641	85	15,257	4	345,257
1978	59,977	15	3,337	1	331,401	81	12,767	3	407,482
1979	44,762	13	2,540	1	285,859	83	11,638	3	344,799
1980	46,843	12	2,916	1	333,597	84	15,142	4	398,498
1981	27,426	8	3,382	1	296,065	85	22,044	6	348,917
1982	29,615	9	4,993	2	264,726	84	17,123	5	316,457
1983	21,098	6	5,077	1	298,928	87	17,184	5	342,287
1984	26,015	6	4,557	1	366,811	88	17,633	4	415,016
1985	20,714	7	5,529	2	238,932	83	22,717	8	287,892
1986	16,096	4	4,133	1	322,665	89	17,970	5	360,864
1987	19,091	6	4,602	2	252,142	86	19,044	6	294,879
1988	6,216	2	5,890	2	295,325	90	20,566	6	327,997
1989	8,629	3	6,131	2	275,088	88	22,133	7	311,981
1990	8,777	4	5,985	2	211,573	86	20,769	8	247,104
1991	7,117	2	3,929	1	259,778	90	19,182	7	290,006
1992	13,899	5	4,055	2	218,765	84	23,043	9	259,762
1993	12,871	4	4,505	2	255,152	87	20,486	7	293,014
1994	26,456	10	5,251	2	209,636	80	21,378	8	262,721
1995	21,120	7	6,228	2	247,744	83	23,209	8	298,301
1996	20,302	7	7,940	3	242,486	80	30,551	10	301,279
1997	32,259	11	6,563	2	236,999	79	22,845	8	298,666
1998	22,962	7	6,405	2	266,772	82	27,506	8	323,645
1999	50,507	15	5,856	2	255,330	75	26,787	8	338,480
2000	21,652	7	6,838	2	264,407	83	26,957	8	319,854
2001	29,467	11	5,905	2	212,668	78	24,443	9	272,483
2002	48,472	17	6,109	2	207,488	72	24,133	8	286,202
2003	36,126	12	5,296	2	238,179	78	24,304	8	303,905
2004	32,365	10	9,238	3	249,936	78	30,640	10	322,179
2005	16,162	6	6,851	3	216,715	81	27,007	10	266,735
2006	15,429	6	9,781	4	208,731	81	23,653	9	257,594
2007	37,785	13	7,296	3	213,010	75	26,570	9	284,661
2008	19,072	7	9,204	3	218,570	81	22,705	8	269,551
2009	31,193	12	7,916	3	201,323	76	23,918	9	264,350
2010	19,575	7	7,027	3	223,409	83	20,112	7	270,123
2011	25,734	9	5,655	2	206,843	75	36,838	13	275,070
2012	33,783	14	3,932	2	170,538	70	34,705	14	242,958
2013	33,783	15	4,906	2	161,220	73	21,806	10	221,715
2014	33,783	17	4,727	2	141,466	69	23,760	12	203,736

Table 5. PURSE SEINE catch estimates in the WCPFC Statistical Area, by species.
(original catches have been adjusted with species compositions determined from observer grab samples corrected for size selectivity bias)

YEAR	ALBACORE		BIGEYE		SKIPJACK		YELLOWFIN		TOTAL
	TONNES	%	TONNES	%	TONNES	%	TONNES	%	
1960	0	0	58	1	3,728	71	1,438	28	5,224
1961	7	0	63	0	11,693	80	2,777	19	14,540
1962	53	0	173	1	11,674	62	6,975	37	18,875
1963	59	0	6	0	9,592	80	2,277	19	11,934
1964	128	0	231	1	25,006	86	3,647	13	29,012
1965	11	0	201	2	4,657	54	3,752	44	8,621
1966	111	1	9	0	10,949	65	5,844	35	16,913
1967	89	1	61	0	10,940	75	3,418	24	14,508
1968	267	2	193	1	7,640	50	7,043	47	15,143
1969	521	5	53	1	5,036	53	3,873	41	9,483
1970	317	2	580	4	7,501	46	7,824	48	16,222
1971	902	4	700	3	13,665	56	9,244	38	24,511
1972	277	1	664	2	18,025	62	10,064	35	29,030
1973	1,353	4	736	2	19,235	53	14,945	41	36,269
1974	161	1	1,129	4	10,852	37	17,406	59	29,548
1975	159	1	1,326	5	13,101	47	13,099	47	27,685
1976	1,109	3	1,650	4	22,422	55	15,589	38	40,770
1977	669	1	1,953	4	34,602	65	16,268	30	53,492
1978	1,115	2	2,481	5	33,169	64	15,275	29	52,040
1979	125	0	2,283	3	58,371	65	29,323	33	90,102
1980	329	0	3,017	3	78,784	67	34,627	30	116,757
1981	252	0	9,577	6	93,910	59	54,820	35	158,559
1982	561	0	14,258	6	164,748	64	75,923	30	255,490
1983	350	0	21,294	5	299,621	68	120,887	27	442,152
1984	3,380	1	23,173	5	310,574	67	125,150	27	462,277
1985	1,533	0	18,192	4	273,325	67	116,484	28	409,534
1986	1,542	0	26,116	5	335,249	71	111,931	24	474,838
1987	1,205	0	30,504	6	354,861	65	157,408	29	543,978
1988	1,208	0	29,196	5	449,731	74	128,861	21	608,996
1989	2,521	0	30,930	5	445,089	67	186,119	28	664,659
1990	1,995	0	34,916	4	547,457	69	211,159	27	795,527
1991	2,652	0	37,360	4	720,784	72	245,968	24	1,006,764
1992	4,104	0	44,172	5	658,514	67	268,950	28	975,740
1993	2,889	0	34,191	4	589,994	70	219,042	26	846,116
1994	2,026	0	35,491	4	700,042	72	234,006	24	971,565
1995	1,177	0	32,395	3	680,700	73	213,218	23	927,490
1996	581	0	42,317	5	665,171	74	188,374	21	896,443
1997	1,068	0	77,105	8	573,506	60	307,536	32	959,215
1998	1,554	0	73,778	6	794,437	63	387,620	31	1,257,389
1999	6,872	1	64,675	6	686,790	64	310,622	29	1,068,959
2000	2,408	0	48,078	4	763,586	67	329,223	29	1,143,295
2001	974	0	51,476	5	759,742	68	306,727	27	1,118,919
2002	3,303	0	58,159	5	944,457	75	259,534	21	1,265,453
2003	627	0	42,379	3	904,979	72	310,241	25	1,258,226
2004	7,200	1	70,088	5	960,792	71	316,162	23	1,354,242
2005	850	0	58,133	4	1,056,573	71	363,775	25	1,479,331
2006	364	0	59,358	4	1,154,297	76	298,926	20	1,512,945
2007	5,682	0	48,671	3	1,277,592	77	323,554	20	1,655,499
2008	825	0	55,403	3	1,235,550	72	417,574	24	1,709,352
2009	2,077	0	56,831	3	1,416,844	79	310,038	17	1,785,790
2010	330	0	55,144	3	1,307,476	77	340,181	20	1,703,131
2011	480	0	72,010	5	1,178,489	76	298,791	19	1,549,770
2012	4,193	0	63,997	3	1,413,974	77	359,073	20	1,841,237
2013	4,193	0	72,574	4	1,481,754	78	340,492	18	1,899,013
2014	4,193	0	67,367	3	1,587,018	79	362,049	18	2,020,627

Table 6. Catches of target tunas in the WCPFC Statistical Area, by flag

YEAR	AUSTRALIA	BELIZE	CANADA	CHINA	COOK ISLANDS	ECUADOR	EL SALVADOR	FEDERATED STATES OF MICRONESIA
1960	-	-	-	-	-	-	-	-
1961	-	-	-	-	-	-	-	-
1962	-	-	-	-	-	-	-	-
1963	-	-	-	-	-	-	-	-
1964	-	-	-	-	-	-	-	-
1965	-	-	-	-	-	-	-	-
1966	-	-	-	-	-	-	-	-
1967	-	-	-	-	-	-	-	-
1968	-	-	-	-	-	-	-	-
1969	-	-	-	-	-	-	-	-
1970	100	-	-	-	-	-	-	-
1971	100	-	-	-	-	-	-	-
1972	100	-	-	-	-	-	-	-
1973	100	-	-	-	-	-	-	-
1974	100	-	-	-	-	-	-	-
1975	2,000	-	-	-	-	-	-	-
1976	147	-	-	-	-	-	-	-
1977	131	-	-	-	-	-	-	-
1978	375	-	-	-	-	-	-	-
1979	100	-	-	-	-	-	-	-
1980	117	-	-	-	-	-	-	-
1981	357	-	-	-	-	-	-	-
1982	238	-	-	-	-	-	-	-
1983	230	-	-	-	-	-	-	-
1984	147	-	-	-	-	-	-	-
1985	18	-	-	-	-	-	-	-
1986	101	-	-	-	-	-	-	-
1987	1,455	-	-	-	-	-	-	-
1988	1,752	-	235	44	-	-	-	-
1989	2,836	-	235	144	-	-	-	-
1990	6,984	-	235	453	-	-	-	-
1991	9,380	-	235	1,007	-	-	-	11,338
1992	9,524	-	235	2,715	-	-	-	15,472
1993	7,212	-	235	6,419	-	-	-	16,908
1994	5,415	-	235	12,677	32	-	-	20,941
1995	6,288	54	235	10,586	63	-	-	6,759
1996	5,249	129	136	6,026	59	-	-	7,394
1997	7,550	77	149	3,664	-	-	-	8,253
1998	5,153	276	167	3,272	22	-	-	14,179
1999	7,551	211	253	7,515	56	-	-	10,881
2000	6,997	270	351	6,244	335	3,992	-	21,688
2001	5,279	7,143	206	9,947	206	1,057	599	17,646
2002	5,232	3,385	144	15,632	770	427	1,488	20,607
2003	5,809	2,697	-	42,210	2,462	1,562	74	30,829
2004	4,200	943	63	42,606	3,207	3,051	-	28,471
2005	3,093	1,056	72	62,734	3,125	5,193	-	28,302
2006	5,030	632	135	77,382	2,841	9,523	-	10,774
2007	4,404	595	27	73,698	3,266	9,187	6,024	15,440
2008	3,969	225	-	86,451	2,817	25,415	10,962	19,424
2009	3,646	190	-	119,639	2,054	4,428	8,824	21,153
2010	2,566	127	-	83,241	3,058	8,451	7,371	23,802
2011	2,924	220	1	105,275	3,636	18,045	12,226	28,785
2012	2,221	194	-	91,302	5,382	23,145	11,411	38,983
2013	2,221	252	-	121,299	1,948	21,442	13,273	27,053
2014	2,554	252	-	89,369	2,181	17,216	5,922	40,870

Table 6 continued

YEAR	FIJI ISLANDS	FRENCH POLYNESIA	INDONESIA	JAPAN	KIRIBATI	REPUBLIC OF KOREA	MARSHALL ISLANDS	MEXICO
1960	–	–	7,415	206,606	–	744	–	–
1961	–	–	8,054	269,191	–	385	–	–
1962	–	–	8,749	302,176	–	708	–	–
1963	–	–	9,505	228,717	–	1,955	–	–
1964	–	–	10,327	270,506	–	2,527	–	–
1965	–	–	11,223	232,844	–	7,078	–	–
1966	–	–	12,198	355,838	–	13,405	–	–
1967	–	–	13,260	281,568	–	14,469	–	–
1968	–	–	14,417	273,603	–	10,794	–	–
1969	–	–	15,677	442,850	–	17,077	–	–
1970	–	–	17,600	505,452	–	16,927	–	–
1971	–	–	18,100	471,129	–	16,541	–	–
1972	–	–	28,600	341,854	–	17,678	–	–
1973	–	–	32,500	418,048	–	25,938	–	–
1974	12	–	33,779	429,014	–	14,105	–	–
1975	11	–	34,378	358,037	–	29,343	–	–
1976	742	–	33,375	474,987	–	44,464	–	–
1977	1,711	–	37,235	459,318	–	43,722	–	–
1978	2,524	–	40,024	513,391	–	33,102	–	–
1979	3,494	696	50,973	466,434	–	41,915	–	–
1980	2,496	936	58,281	522,844	1,812	46,096	–	–
1981	5,836	1,001	66,579	460,646	2,376	33,310	–	–
1982	4,428	1,034	72,359	501,943	2,269	39,684	–	–
1983	3,741	836	81,685	554,560	3,406	37,589	–	468
1984	4,572	1,250	91,802	639,034	3,843	33,293	–	6,600
1985	3,946	836	99,918	511,605	2,531	44,292	–	–
1986	3,125	961	104,027	590,885	3,226	63,034	–	–
1987	3,889	878	131,376	504,820	2,246	91,201	–	–
1988	3,891	715	152,705	599,082	3,284	113,653	–	–
1989	5,189	856	165,050	517,619	4,094	139,904	–	–
1990	3,830	2,109	174,573	471,098	2,407	204,399	–	–
1991	5,298	2,335	178,542	490,677	2,036	247,950	–	–
1992	4,790	2,019	205,267	472,795	2,363	213,553	9	–
1993	4,966	2,387	188,046	516,860	2,104	150,165	137	–
1994	5,937	2,804	208,581	473,786	3,131	226,531	48	–
1995	7,009	3,343	222,269	481,106	5,424	206,176	22	–
1996	6,803	3,583	344,955	417,584	6,645	174,948	–	–
1997	4,354	4,564	256,670	507,798	7,021	188,667	–	–
1998	4,013	5,710	338,881	543,367	9,389	247,929	–	–
1999	4,075	5,200	321,618	482,046	9,793	173,490	–	–
2000	9,660	6,833	342,203	498,958	14,726	207,498	7,560	–
2001	11,309	7,733	314,888	439,331	5,401	216,691	35,774	–
2002	11,551	7,347	302,659	451,896	9,830	254,593	38,952	–
2003	10,854	6,309	308,731	469,809	6,898	221,079	37,875	–
2004	17,312	5,496	406,483	441,599	6,661	212,655	46,676	–
2005	15,477	5,089	247,514	481,852	9,165	237,353	56,164	–
2006	15,472	5,938	285,844	445,977	6,723	274,859	42,349	–
2007	10,042	6,408	321,890	472,400	18,020	278,482	59,409	–
2008	13,627	5,673	334,585	432,795	18,373	275,132	33,013	–
2009	16,828	6,878	388,635	399,646	34,004	310,139	43,973	–
2010	12,545	6,250	358,254	430,223	38,946	300,213	57,225	–
2011	16,307	6,028	397,442	368,297	59,611	231,570	90,544	–
2012	14,978	7,271	443,316	395,506	74,108	290,293	72,422	–
2013	12,782	6,691	526,236	376,404	77,782	245,372	77,768	–
2014	13,663	7,442	482,917	363,129	114,156	292,011	75,887	–

Table 6 continued

YEAR	NAURU	NEW CALEDONIA	NEW ZEALAND	NIUE	PALAU	PAPUA NEW GUINEA	PHILIPPINES	PORTUGAL
1960	–	–	–	–	–	–	20,585	–
1961	–	–	–	–	–	–	21,735	–
1962	–	–	–	–	–	–	22,957	–
1963	–	–	–	–	–	–	24,252	–
1964	–	–	–	–	1,166	–	25,626	–
1965	–	–	–	–	2,670	–	27,084	–
1966	–	–	–	–	2,686	–	28,632	–
1967	–	–	5	–	3,406	–	30,275	–
1968	–	–	14	–	5,056	–	32,021	–
1969	–	–	–	–	4,762	–	33,875	–
1970	–	–	50	–	8,082	2,428	52,000	–
1971	–	–	–	–	2,143	16,974	57,200	–
1972	–	–	268	–	1,519	13,130	60,700	–
1973	–	–	484	–	2,350	28,216	70,900	–
1974	–	–	899	–	6,808	41,630	81,188	–
1975	–	–	647	–	6,269	17,369	84,450	–
1976	–	–	25	–	5,323	32,921	73,653	–
1977	–	–	621	–	4,012	24,115	118,149	–
1978	–	–	1,701	–	9,694	48,859	87,319	–
1979	–	–	830	–	5,688	26,857	94,308	–
1980	–	–	1,519	–	6,576	33,994	77,506	–
1981	–	229	2,111	–	9,411	31,412	94,616	–
1982	–	868	2,436	–	4,053	–	104,047	–
1983	–	461	6,565	–	–	–	118,529	–
1984	–	150	7,005	–	–	2,744	105,217	–
1985	–	281	5,713	–	97	9,300	137,308	–
1986	–	367	6,793	–	131	–	145,097	–
1987	–	1,102	5,035	–	161	–	141,461	–
1988	–	1,092	3,923	–	157	–	124,785	–
1989	–	871	10,323	–	77	–	151,124	–
1990	–	1,730	7,120	–	88	–	202,214	–
1991	–	1,536	7,765	–	–	–	221,817	–
1992	–	1,092	4,524	–	213	–	165,652	–
1993	–	1,294	4,415	–	206	8	134,921	–
1994	–	1,355	8,513	–	184	1,381	172,558	–
1995	–	1,274	8,147	–	100	12,700	198,613	–
1996	–	1,201	10,194	–	100	10,572	205,004	–
1997	–	977	10,451	–	107	19,400	208,767	–
1998	–	1,543	15,154	–	100	50,726	235,585	–
1999	–	1,616	10,141	–	100	38,980	226,319	–
2000	11	1,662	18,918	–	240	68,819	234,520	–
2001	13	1,718	17,533	–	62	92,806	210,786	–
2002	7	1,926	38,574	–	4	124,705	226,863	–
2003	20	2,007	30,614	–	20	159,622	264,106	–
2004	3	2,189	33,886	6	35	225,441	271,760	–
2005	–	2,114	27,917	105	–	235,440	274,247	–
2006	–	1,807	27,410	286	–	233,170	291,564	–
2007	–	1,770	38,969	306	–	230,015	320,567	–
2008	3	1,993	33,878	435	–	205,682	360,187	–
2009	8	2,187	30,618	189	–	213,019	328,047	–
2010	4	2,488	26,949	110	–	208,253	285,594	–
2011	11	2,362	25,312	–	–	164,557	193,915	7
2012	11	2,337	21,661	–	–	240,054	233,386	18
2013	19	2,314	27,687	–	–	194,301	229,393	175
2014	19	2,429	22,908	–	–	236,823	286,862	94

Table 6 continued

YEAR	RUSSIA	SAMOA	SENEGAL	SOLOMON ISLANDS	SPAIN	CHINESE TAIPEI	TONGA
1960	-	-	-	-	-	4,035	-
1961	-	-	-	-	-	4,485	-
1962	-	-	-	-	-	4,779	-
1963	-	-	-	-	-	4,642	-
1964	-	-	-	-	-	5,482	-
1965	-	-	-	-	-	7,524	-
1966	-	-	-	-	-	14,812	-
1967	-	-	-	-	-	25,911	-
1968	-	-	-	-	-	35,302	-
1969	-	-	-	-	-	30,096	-
1970	-	-	-	-	-	33,887	-
1971	-	-	-	4,711	-	42,640	-
1972	-	-	-	7,905	-	48,612	-
1973	-	-	-	6,624	-	51,807	-
1974	-	-	-	10,332	-	37,501	-
1975	-	-	-	7,094	-	43,804	-
1976	-	-	-	15,763	-	43,546	-
1977	-	-	-	12,202	-	50,858	-
1978	-	-	-	18,353	-	46,606	-
1979	-	-	-	24,289	-	43,450	-
1980	-	-	-	23,241	-	48,323	-
1981	-	-	-	22,832	-	37,900	-
1982	-	-	-	20,071	-	32,644	205
1983	-	-	-	33,432	-	44,457	208
1984	-	-	-	35,616	-	56,407	218
1985	2,111	-	-	29,996	-	55,987	233
1986	4,175	-	-	42,249	-	65,658	252
1987	8,995	-	-	29,437	-	84,558	299
1988	6,189	-	-	40,513	-	117,865	276
1989	4,935	-	-	34,262	-	135,125	235
1990	2,126	-	-	26,612	-	164,639	192
1991	3,715	-	-	46,888	-	213,007	197
1992	2,126	-	-	30,559	-	263,185	225
1993	8,714	300	-	28,006	-	207,231	329
1994	6,722	736	-	33,925	-	223,590	411
1995	-	2,151	-	49,665	-	228,798	461
1996	-	2,375	-	38,697	-	226,436	579
1997	-	5,498	-	47,441	-	217,027	663
1998	-	6,820	-	48,377	1,624	305,354	833
1999	-	5,790	-	45,662	8,613	251,034	1,084
2000	-	5,389	-	12,929	12,895	279,197	1,161
2001	-	5,864	-	17,218	2,402	285,281	1,733
2002	-	4,927	-	18,537	2,288	318,298	1,672
2003	-	2,944	-	26,364	4,659	258,537	971
2004	-	1,967	-	24,904	5,587	260,646	388
2005	-	1,626	6	20,023	3,453	244,345	629
2006	-	2,564	15	29,462	11,825	255,610	759
2007	-	3,559	6	21,244	23,749	276,957	861
2008	-	2,796	-	17,378	36,358	247,220	592
2009	-	3,422	-	17,883	26,688	242,295	271
2010	-	3,090	-	26,907	29,500	250,562	128
2011	-	1,932	-	28,233	39,468	229,095	224
2012	-	2,353	-	28,635	32,199	247,248	171
2013	-	2,022	-	26,435	45,038	260,446	147
2014	-	1,102	-	71,600	40,538	275,356	250

Table 6 continued

YEAR	TOKELAU	TUVALU	UNITED STATES OF AMERICA	VANUATU	VIETNAM	WALLIS ET FUTUNA	EASTERN PACIFIC NEI	TOTAL
1960	-	-	708	-	-	-	-	240,093
1961	-	-	626	-	-	-	-	304,476
1962	-	-	669	-	-	-	-	340,038
1963	-	-	549	-	-	-	-	269,620
1964	-	-	516	-	-	-	-	316,150
1965	-	-	501	-	-	-	-	288,924
1966	-	-	513	-	-	-	-	428,084
1967	-	-	446	-	-	-	-	369,340
1968	-	-	367	-	-	-	-	371,574
1969	-	-	439	-	-	-	-	544,776
1970	-	-	493	-	-	-	-	637,019
1971	-	-	437	-	-	-	-	629,975
1972	-	-	419	-	-	-	-	520,785
1973	-	-	307	-	-	-	-	637,274
1974	-	-	347	-	-	-	-	655,715
1975	-	-	310	-	-	-	-	583,712
1976	-	-	1,071	-	-	-	-	726,017
1977	-	-	1,359	-	-	-	672	754,105
1978	-	-	1,477	-	-	-	926	804,351
1979	-	-	11,852	-	-	-	734	771,620
1980	-	-	13,483	-	-	-	114	837,338
1981	-	-	40,496	-	-	-	98	809,210
1982	-	216	75,494	-	-	-	75	862,064
1983	-	337	181,593	-	-	-	2,167	1,070,264
1984	-	540	162,380	-	-	-	10,188	1,161,006
1985	-	4	110,031	-	-	-	1,221	1,015,428
1986	-	390	123,517	-	-	-	-	1,153,988
1987	-	632	145,072	-	-	-	405	1,153,022
1988	-	1,090	122,380	-	-	-	-	1,293,631
1989	-	149	148,339	-	-	-	-	1,321,367
1990	-	90	171,301	-	-	-	-	1,442,200
1991	-	29	225,040	-	-	-	-	1,668,792
1992	-	8	209,244	-	-	-	-	1,605,570
1993	-	-	203,518	-	-	-	-	1,484,381
1994	-	-	215,683	820	-	-	-	1,625,996
1995	-	-	176,125	7,276	-	-	211	1,634,855
1996	-	-	158,219	11,497	-	-	642	1,639,027
1997	-	-	154,149	26,164	-	-	1,776	1,681,187
1998	-	-	184,278	39,423	-	-	2,934	2,065,109
1999	-	-	191,739	46,162	-	-	1,910	1,851,839
2000	-	-	135,410	37,545	33,632	-	2,925	1,972,568
2001	-	-	128,503	11,917	35,400	-	510	1,884,956
2002	8	-	136,190	28,031	37,683	-	244	2,064,470
2003	3	-	101,004	28,443	37,458	-	2,600	2,066,570
2004	3	-	79,396	66,793	50,521	-	2,014	2,244,962
2005	6	19	97,870	88,391	52,409	-	709	2,205,498
2006	6	12	81,165	76,148	52,573	-	709	2,248,564
2007	8	26	103,576	82,758	54,210	-	709	2,438,582
2008	8	22	221,186	47,892	49,903	-	709	2,488,703
2009	12	4,456	292,702	49,567	44,241	-	709	2,616,351
2010	4	10,582	256,977	38,864	41,665	-	709	2,514,658
2011	4	10,085	215,131	34,792	49,584	13	709	2,336,345
2012	229	13,632	272,603	37,824	65,556	-	709	2,669,158
2013	177	14,193	265,053	34,327	78,631	-	-	2,690,881
2014	86	10,561	293,478	32,343	78,630	-	-	2,860,648

Table 7. Catches of albacore in the Pacific Ocean. "OTHER" includes purse seine catches.

YEAR	SOUTH PACIFIC OCEAN					NORTH PACIFIC OCEAN					TOTAL
	LONGLINE	POLE-AND-LINE	TROLL	OTHER	SUBTOTAL	LONGLINE	POLE-AND-LINE	TROLL	OTHER	SUBTOTAL	
1960	22,248	45	0	0	22,293	17,384	25,156	20,105	769	63,414	85,707
1961	23,742	0	0	0	23,742	17,490	21,476	12,059	1,631	52,656	76,398
1962	35,219	0	0	0	35,219	15,850	9,814	19,753	1,926	47,343	82,562
1963	31,095	16	0	0	31,111	13,639	28,852	25,145	1,438	69,074	100,185
1964	22,824	0	0	0	22,824	15,659	27,269	18,391	1,271	62,590	85,414
1965	25,455	0	0	0	25,455	14,226	41,908	16,557	863	73,554	99,009
1966	38,661	0	0	0	38,661	25,600	24,430	15,377	1,285	66,692	105,353
1967	43,952	0	5	0	43,957	29,821	34,594	17,975	1,316	83,706	127,663
1968	32,368	0	14	0	32,382	25,152	21,503	21,462	2,327	70,444	102,826
1969	24,805	0	0	0	24,805	19,223	34,908	20,192	1,838	76,161	100,966
1970	34,775	100	50	0	34,925	19,229	28,679	21,422	1,656	70,986	105,911
1971	38,530	100	0	0	38,630	14,982	55,028	22,272	2,436	94,718	133,348
1972	39,131	122	268	0	39,521	19,025	64,319	27,521	1,659	112,524	152,045
1973	46,705	141	484	0	47,330	17,030	71,003	17,053	2,006	107,092	154,422
1974	33,039	112	898	0	34,049	14,047	78,341	21,509	1,384	115,281	149,330
1975	22,849	105	646	0	23,600	14,547	55,395	19,043	1,219	90,204	113,804
1976	28,957	100	25	0	29,082	18,510	88,036	16,183	3,217	125,946	155,028
1977	38,019	100	621	0	38,740	17,684	33,431	10,022	2,264	63,401	102,141
1978	32,890	100	1,686	0	34,676	13,851	60,827	16,636	8,064	99,378	134,054
1979	26,162	100	814	0	27,076	14,738	44,965	7,302	4,211	71,216	98,292
1980	30,972	101	1,468	0	32,541	15,635	47,124	7,768	4,707	75,234	107,775
1981	32,694	0	2,085	5	34,784	18,864	28,174	12,837	11,526	71,401	106,185
1982	28,347	1	2,434	6	30,788	18,275	30,039	6,713	13,963	68,990	99,778
1983	24,309	0	744	39	25,092	16,586	21,705	9,584	7,676	55,551	80,643
1984	20,340	2	2,773	1,589	24,704	16,133	27,043	9,354	18,670	71,200	95,904
1985	27,138	0	3,253	1,937	32,328	14,781	22,212	6,471	14,947	58,411	90,739
1986	32,641	0	2,003	1,946	36,590	13,140	16,528	4,738	10,938	45,344	81,934
1987	21,979	9	2,134	930	25,052	15,411	19,240	2,870	11,509	49,030	74,082
1988	28,288	0	4,296	5,283	37,867	15,601	6,814	4,367	18,968	45,750	83,617
1989	18,738	0	8,370	21,968	49,076	14,536	8,683	2,000	19,986	45,205	94,281
1990	21,304	245	6,975	7,538	36,062	16,608	8,647	2,905	26,159	54,319	90,381
1991	26,292	14	7,805	1,489	35,600	18,049	7,103	1,984	10,798	37,934	73,534
1992	32,014	11	6,578	65	38,668	19,991	13,888	4,934	16,580	55,393	94,061
1993	30,998	74	4,296	70	35,438	31,143	12,797	6,748	4,112	54,800	90,238
1994	34,998	67	7,164	89	42,318	30,825	26,389	13,134	3,486	73,834	116,152
1995	30,508	139	7,716	104	38,467	32,948	21,061	10,758	1,725	66,492	104,959
1996	26,763	30	7,410	156	34,359	39,383	20,296	21,849	1,070	82,598	116,957
1997	34,657	21	4,679	133	39,490	48,365	32,311	18,674	2,736	102,086	141,576
1998	43,970	36	6,280	85	50,371	48,050	23,005	20,074	3,237	94,366	144,737
1999	35,955	138	3,447	74	39,614	46,767	50,429	13,853	11,155	122,204	161,818
2000	40,642	102	6,455	139	47,338	41,615	21,619	15,245	4,985	83,464	130,802
2001	52,855	37	5,253	199	58,344	37,744	29,569	16,738	3,002	87,053	145,397
2002	68,411	18	4,661	150	73,240	33,911	48,832	16,323	6,219	105,285	178,525
2003	56,351	12	5,984	130	62,477	33,293	36,173	21,886	3,184	94,536	157,013
2004	57,024	110	4,614	123	61,871	30,175	32,380	22,255	8,977	93,787	155,658
2005	59,897	29	3,503	137	63,566	33,028	16,199	14,067	3,183	66,477	130,043
2006	59,343	29	2,884	188	62,444	34,270	15,423	18,931	1,137	69,761	132,205
2007	56,500	17	2,014	60	58,591	31,771	37,789	18,646	6,438	94,644	153,235
2008	59,066	12	3,502	160	62,740	28,369	19,060	17,901	2,925	68,255	130,995
2009	80,638	21	2,031	211	82,901	28,802	33,390	19,167	2,755	84,114	167,015
2010	86,599	14	2,139	190	88,942	28,375	19,561	19,749	888	68,573	157,515
2011	63,024	30	3,189	233	66,476	35,398	26,704	16,895	1,077	80,074	146,550
2012	84,644	41	2,962	248	87,895	35,968	33,742	17,256	4,842	91,808	179,703
2013	81,335	26	3,226	248	84,835	34,661	33,742	19,844	5,333	93,580	178,415
2014	80,538	26	2,221	248	83,033	32,585	33,742	18,805	5,537	90,669	173,702

Table 8. Catches of bigeye in the Pacific Ocean.

YEAR	WESTERN AND CENTRAL PACIFIC OCEAN					EASTERN PACIFIC OCEAN					TOTAL
	LONGLINE	POLE-AND-LINE	PURSE SEINE	OTHER	SUBTOTAL	LONGLINE	POLE-AND-LINE	PURSE SEINE	OTHER	SUBTOTAL	
1960	43,467	1,500	58	0	45,025	17,722	0	24	0	17,746	62,771
1961	37,517	1,800	63	0	39,380	52,431	106	105	0	52,642	92,022
1962	35,895	800	173	0	36,868	45,050	318	302	0	45,670	82,538
1963	42,540	1,800	6	0	44,346	66,617	140	0	0	66,757	111,103
1964	30,978	1,143	231	28	32,380	46,279	127	0	0	46,406	78,786
1965	29,844	1,254	201	30	31,329	29,164	231	0	0	29,395	60,724
1966	31,949	1,108	9	86	33,152	34,800	292	210	0	35,302	68,454
1967	32,791	2,803	61	253	35,908	35,878	1,305	1,697	0	38,880	74,788
1968	27,199	2,272	193	204	29,868	35,233	115	4,618	0	39,966	69,834
1969	32,371	1,675	53	62	34,161	52,071	0	1,093	0	53,164	87,325
1970	34,348	1,589	746	2,802	39,485	33,341	0	2,411	0	35,752	75,237
1971	36,798	931	886	3,057	41,672	29,804	75	4,359	18	34,256	75,928
1972	49,334	1,762	857	3,497	55,450	36,128	126	3,971	0	40,225	95,675
1973	40,285	1,258	967	4,218	46,728	50,777	236	3,342	0	54,355	101,083
1974	41,787	1,039	1,397	4,719	48,942	36,961	0	1,554	0	38,515	87,457
1975	57,623	1,334	1,600	4,938	65,495	41,733	36	6,574	0	48,343	113,838
1976	68,514	3,423	1,881	4,123	77,941	54,290	75	17,212	7	71,584	149,525
1977	66,249	3,325	2,280	5,627	77,481	74,086	2	11,161	0	85,249	162,730
1978	50,502	3,337	2,581	4,231	60,651	70,659	0	18,539	0	89,198	149,849
1979	57,319	2,540	2,634	4,615	67,108	55,435	0	12,097	1	67,533	134,641
1980	57,233	2,916	3,440	3,663	67,252	64,335	0	21,938	130	86,403	153,655
1981	42,331	3,382	9,957	4,244	59,914	53,416	0	14,921	7	68,344	128,258
1982	45,896	4,993	14,395	4,005	69,289	53,365	42	6,939	3	60,349	129,638
1983	42,453	5,077	21,627	4,371	73,528	60,043	39	4,575	37	64,694	138,222
1984	47,516	4,557	23,595	4,625	80,293	46,394	2	8,861	11	55,268	135,561
1985	52,454	5,529	18,807	5,560	82,350	66,325	2	6,056	15	72,398	154,748
1986	47,926	4,133	26,606	5,856	84,521	102,425	0	2,686	74	105,185	189,706
1987	60,147	4,602	30,793	5,263	100,805	100,121	0	1,177	49	101,347	202,152
1988	50,701	5,890	29,595	6,404	92,590	72,758	5	1,535	15	74,313	166,903
1989	54,773	6,131	31,365	7,012	99,281	70,963	0	2,030	1	72,994	172,275
1990	66,976	5,985	35,329	7,708	115,998	98,871	0	5,921	59	104,851	220,849
1991	48,875	3,929	37,847	8,859	99,510	104,195	31	4,870	25	109,121	208,631
1992	64,018	4,055	44,441	5,931	118,445	84,808	0	7,179	13	92,000	210,445
1993	58,348	4,505	34,346	5,514	102,713	72,498	0	9,657	35	82,190	184,903
1994	68,326	5,251	35,652	7,661	116,890	71,360	0	34,899	806	107,065	223,955
1995	58,821	6,228	32,520	8,284	105,853	58,269	0	45,321	1,369	104,959	210,812
1996	49,936	7,940	42,443	10,228	110,547	46,958	0	61,311	748	109,017	219,564
1997	61,240	6,563	77,362	7,671	152,836	52,580	0	64,272	20	116,872	269,708
1998	76,424	6,405	73,603	9,190	165,622	46,375	0	44,129	628	91,132	256,754
1999	68,629	5,856	64,112	8,915	147,512	36,450	0	51,158	538	88,146	235,658
2000	65,952	6,838	49,273	9,942	132,005	47,605	0	94,640	253	142,498	274,503
2001	66,812	5,905	51,736	9,154	133,607	68,755	0	61,156	19	129,930	263,537
2002	82,471	6,109	57,759	9,549	155,888	74,424	0	57,440	12	131,876	287,764
2003	71,027	5,296	41,530	9,453	127,306	59,776	0	54,174	21	113,971	241,277
2004	87,961	9,238	69,971	10,803	177,973	43,483	0	67,592	194	111,269	289,242
2005	71,401	6,851	58,226	4,429	140,907	41,432	0	67,895	25	109,352	250,259
2006	78,426	9,781	59,030	4,307	151,544	33,802	0	83,837	40	117,679	269,223
2007	76,661	7,296	48,538	4,575	137,070	29,847	0	63,451	44	93,342	230,412
2008	75,802	9,204	55,983	4,290	145,279	26,136	0	75,028	28	101,192	246,471
2009	75,351	7,916	56,185	5,100	144,552	31,282	0	76,800	15	108,097	252,649
2010	62,852	7,027	55,800	4,106	129,785	35,227	0	57,753	1,804	94,784	224,569
2011	68,901	5,655	73,413	5,272	153,241	32,630	0	56,512	0	89,142	242,383
2012	73,598	3,932	64,327	12,437	154,294	36,122	0	66,020	8	102,150	256,444
2013	54,178	4,906	71,279	11,836	142,199	33,915	0	49,426	17	83,358	225,557
2014	68,463	4,725	66,635	14,778	154,601	33,915	0	59,600	17	93,532	248,133

Table 9. Catches of skipjack in the Pacific Ocean

YEAR	WESTERN AND CENTRAL PACIFIC OCEAN					EASTERN PACIFIC OCEAN					TOTAL
	LONGLINE	POLE-AND-LINE	PURSE SEINE	OTHER	SUBTOTAL	LONGLINE	POLE-AND-LINE	PURSE SEINE	OTHER	SUBTOTAL	
1960	0	70,428	3,728	15,782	89,938	0	28,929	16,649	481	46,059	135,997
1961	0	127,011	11,693	18,032	156,736	0	28,995	45,706	428	75,129	231,865
1962	4	152,387	11,674	17,559	181,624	0	17,660	58,939	503	77,102	258,726
1963	0	94,757	9,592	18,354	122,703	0	17,138	82,404	2,389	101,931	224,634
1964	5	137,106	25,006	20,801	182,918	0	10,306	51,759	3,609	65,674	248,592
1965	11	129,933	4,657	20,620	155,221	0	19,867	64,056	1,046	84,969	240,190
1966	50	215,600	10,949	22,913	249,512	0	14,083	50,264	1,960	66,307	315,819
1967	101	168,846	10,940	24,930	204,817	0	18,016	104,928	5,038	127,982	332,799
1968	60	162,379	7,640	24,929	195,008	0	7,340	59,642	10,128	77,110	272,118
1969	124	315,795	5,036	30,070	351,025	0	6,970	46,020	11,904	64,894	415,919
1970	1,260	379,074	10,552	32,164	423,050	0	7,470	47,466	7,234	62,170	485,220
1971	1,440	333,284	16,930	29,164	380,818	0	11,679	94,502	6,702	112,883	493,701
1972	1,524	172,827	21,610	41,783	237,744	0	6,556	29,804	1,144	37,504	275,248
1973	1,838	253,217	23,263	50,407	328,725	0	9,135	39,247	638	49,020	377,745
1974	2,088	289,202	15,346	49,528	356,164	0	7,629	79,418	510	87,557	443,721
1975	1,893	218,271	17,931	50,189	288,284	0	13,848	120,358	526	134,732	423,016
1976	2,056	276,582	27,313	51,216	357,167	0	11,256	124,957	705	136,918	494,085
1977	3,107	294,641	39,367	66,475	403,590	0	7,522	84,603	1,960	94,085	497,675
1978	3,219	331,401	40,754	73,644	449,018	0	6,047	172,294	1,324	179,665	628,683
1979	2,175	285,859	64,073	60,440	412,547	0	6,346	133,695	1,462	141,503	554,050
1980	630	333,597	82,135	34,945	451,307	0	5,225	130,912	1,965	138,102	589,409
1981	754	296,065	98,593	39,558	434,970	0	5,906	119,165	930	126,001	560,971
1982	970	264,726	168,829	44,021	478,546	0	3,760	100,499	410	104,669	583,215
1983	2,143	298,928	303,831	45,450	650,352	0	4,387	56,851	737	61,975	712,327
1984	867	366,811	319,112	39,870	726,660	0	2,884	59,859	868	63,611	790,271
1985	1,100	238,932	287,628	39,603	567,263	0	946	50,829	227	52,002	619,265
1986	1,434	322,665	353,592	46,622	724,313	0	1,921	65,634	190	67,745	792,058
1987	2,320	252,142	366,734	46,829	668,025	0	2,233	64,019	214	66,466	734,491
1988	1,930	295,325	458,737	49,571	805,563	0	4,325	87,113	689	92,127	897,690
1989	2,502	275,088	455,498	48,272	781,360	0	2,940	94,934	1,047	98,921	880,281
1990	358	211,573	566,502	75,714	854,147	0	823	74,369	1,915	77,107	931,254
1991	882	259,778	735,396	77,113	1,073,169	0	1,717	62,228	1,945	65,890	1,139,059
1992	431	218,765	677,235	72,336	968,767	0	1,957	84,283	1,054	87,294	1,056,061
1993	569	255,152	609,220	58,831	923,772	0	3,772	83,830	2,317	89,919	1,013,691
1994	353	209,636	708,316	68,918	987,223	0	3,240	70,126	804	74,170	1,061,393
1995	572	247,744	690,890	80,441	1,019,647	0	5,253	127,047	1,988	134,288	1,153,935
1996	3,874	242,486	675,367	95,543	1,017,270	0	2,555	103,973	1,313	107,841	1,125,111
1997	3,932	236,999	582,309	86,675	909,915	0	3,260	153,456	231	156,947	1,066,862
1998	4,904	266,772	801,795	100,901	1,174,372	0	1,684	140,631	531	142,846	1,317,218
1999	4,064	255,330	699,228	95,226	1,053,848	0	2,044	261,565	1,594	265,203	1,319,051
2000	4,516	264,407	775,285	120,559	1,164,767	68	231	204,307	67	204,673	1,369,440
2001	5,036	212,668	770,310	101,449	1,089,463	1,214	448	143,561	34	145,257	1,234,720
2002	3,376	207,488	955,994	98,597	1,265,455	261	616	153,303	119	154,299	1,419,754
2003	3,693	238,179	917,492	100,959	1,260,323	634	638	274,529	2,777	278,578	1,538,901
2004	3,841	249,936	977,714	126,472	1,357,963	713	528	198,664	1,105	201,010	1,558,973
2005	1,045	216,715	1,069,439	117,105	1,404,304	231	1,300	263,229	1,780	266,540	1,670,844
2006	1,470	208,220	1,166,592	126,163	1,502,445	224	435	296,269	986	297,914	1,800,359
2007	1,132	212,720	1,294,064	146,739	1,654,655	107	276	208,296	1,065	209,744	1,864,399
2008	781	218,070	1,255,446	153,687	1,627,984	56	501	296,603	1,163	298,323	1,926,307
2009	1,148	200,692	1,449,652	141,140	1,792,632	184	151	230,527	1,112	231,974	2,024,606
2010	1,150	222,948	1,336,428	133,643	1,694,169	121	47	147,192	2,964	150,324	1,844,493
2011	1,085	206,542	1,204,117	127,786	1,539,530	1,384	24	276,035	851	278,294	1,817,824
2012	1,899	170,234	1,439,465	160,250	1,771,848	2,377	303	266,215	1,040	269,935	2,041,783
2013	1,058	161,051	1,506,090	162,622	1,830,821	2,014	167	278,091	774	281,046	2,111,867
2014	1,265	141,341	1,620,592	184,392	1,947,590	2,014	167	261,665	774	264,620	2,212,210

Table 10. Catches of yellowfin in the Pacific Ocean

YEAR	WESTERN AND CENTRAL PACIFIC OCEAN					EASTERN PACIFIC OCEAN					TOTAL
	LOONGLINE	POLE-AND-LINE	PURSE SEINE	OTHER	SUBTOTAL	LOONGLINE	POLE-AND-LINE	PURSE SEINE	OTHER	SUBTOTAL	
1960	55,020	1,872	1,438	15,337	73,667	5,934	22,151	79,425	458	107,968	181,635
1961	53,166	3,259	2,777	16,236	75,438	12,500	15,220	80,058	949	108,727	184,165
1962	55,547	4,225	6,975	17,197	83,944	10,211	11,052	56,271	706	78,240	162,184
1963	53,185	2,071	2,277	18,223	75,756	18,973	7,041	48,004	688	74,706	150,462
1964	45,241	5,074	3,647	20,186	74,148	16,975	3,989	78,318	738	100,020	174,168
1965	45,487	3,434	3,752	20,956	73,629	15,620	6,983	65,348	312	88,263	161,892
1966	61,623	2,192	5,844	23,409	93,068	9,097	5,302	68,982	507	83,888	176,956
1967	35,720	3,125	3,418	26,303	68,566	9,285	4,512	65,442	1,534	80,773	149,339
1968	45,572	2,706	7,043	26,085	81,406	14,986	4,307	86,542	3,241	109,076	190,482
1969	51,372	5,166	3,873	26,612	87,023	15,329	7,195	113,665	1,866	138,055	225,078
1970	55,481	4,606	9,335	29,422	98,844	12,643	4,260	139,385	4,850	161,138	259,982
1971	56,927	5,248	10,934	31,204	104,313	8,013	5,300	104,863	2,482	120,658	224,971
1972	60,251	7,465	11,821	35,749	115,286	16,859	6,060	164,297	1,060	188,276	303,562
1973	61,818	7,458	17,047	41,726	128,049	11,697	3,933	194,200	661	210,491	338,540
1974	57,490	6,582	19,850	46,997	130,919	7,190	8,188	191,626	1,230	208,234	339,153
1975	68,416	7,801	15,592	48,536	140,345	10,640	5,629	183,028	567	199,864	340,209
1976	76,363	17,186	17,689	40,666	151,904	15,632	3,280	215,108	358	234,378	386,282
1977	92,680	15,257	19,246	55,092	182,275	12,355	1,841	184,922	248	199,366	381,641
1978	108,428	12,767	16,185	38,491	175,871	10,188	3,888	158,801	1,103	173,980	349,851
1979	104,932	11,638	32,513	46,375	195,458	11,473	4,789	170,650	212	187,124	382,582
1980	122,611	15,142	38,479	39,583	215,815	13,477	1,481	143,042	862	158,862	374,677
1981	95,574	22,044	58,279	44,533	220,430	7,999	1,477	168,234	800	178,510	398,940
1982	85,175	17,123	77,174	41,603	221,075	10,961	1,538	114,755	280	127,534	348,609
1983	87,734	17,184	123,915	45,179	274,012	10,895	4,007	83,929	849	99,680	373,692
1984	74,210	17,633	128,989	50,440	271,272	10,345	2,991	135,785	344	149,465	420,737
1985	77,674	22,717	122,079	57,803	280,273	13,198	1,070	211,459	212	225,939	506,212
1986	66,594	17,970	116,392	60,968	261,924	22,808	2,537	260,512	214	286,071	547,995
1987	72,687	19,044	160,035	57,367	309,133	18,911	5,107	262,008	138	286,164	595,297
1988	84,257	20,566	132,494	68,021	305,338	14,660	3,723	277,293	752	296,428	601,766
1989	69,921	22,133	190,076	71,530	353,660	17,032	4,145	277,996	263	299,436	653,096
1990	74,876	20,769	214,919	83,156	393,720	34,633	2,676	263,253	960	301,522	695,242
1991	58,566	19,182	250,399	92,536	420,683	30,899	2,856	231,257	958	265,970	686,653
1992	74,429	23,043	271,397	59,777	428,646	18,646	3,789	228,121	1,958	252,514	681,160
1993	69,375	20,486	220,448	59,188	369,497	24,009	4,951	219,492	3,034	251,486	620,983
1994	76,879	21,378	235,470	75,514	409,241	30,026	3,625	208,408	1,487	243,546	652,787
1995	85,210	23,209	214,354	82,395	405,168	20,596	1,268	215,434	2,066	239,364	644,532
1996	88,254	30,551	189,518	99,923	408,246	16,608	3,762	238,607	1,639	260,616	668,862
1997	78,069	22,845	310,366	83,763	495,043	22,163	4,418	244,878	600	272,059	767,102
1998	76,130	27,506	391,160	101,754	596,550	15,336	5,085	253,959	1,529	275,909	872,459
1999	68,539	26,787	311,524	103,038	509,888	11,682	1,783	281,920	2,706	298,091	807,979
2000	90,916	26,957	329,790	109,860	557,523	23,855	2,431	255,231	1,109	282,626	840,149
2001	89,797	24,443	309,413	99,047	522,700	29,608	3,916	382,702	520	416,746	939,446
2002	91,098	24,133	261,099	102,132	478,462	25,531	950	412,507	549	439,537	917,999
2003	91,031	24,304	313,455	105,505	534,295	25,174	470	381,107	1,145	407,896	942,191
2004	101,139	30,640	319,906	119,759	571,444	18,779	1,884	269,597	627	290,887	862,331
2005	83,044	27,007	369,392	63,353	542,796	12,118	1,821	268,102	1,852	283,893	826,689
2006	80,433	23,544	304,243	65,720	473,940	9,316	686	166,629	1,458	178,089	652,029
2007	79,594	26,460	328,632	72,275	506,961	7,779	894	170,016	1,439	180,128	687,089
2008	82,112	22,639	424,557	70,573	599,881	8,371	812	185,057	941	195,181	795,062
2009	96,476	23,859	317,202	96,720	534,257	8,479	709	236,771	995	246,954	781,211
2010	92,228	20,077	344,723	94,540	551,568	6,645	460	251,008	2,641	260,754	812,322
2011	94,766	36,772	302,239	81,251	515,028	8,071	276	206,851	806	216,004	731,032
2012	84,233	34,638	365,712	101,220	585,803	12,954	400	198,017	1,236	212,607	798,410
2013	74,202	21,716	346,729	105,222	547,869	10,349	754	217,258	865	229,226	777,095
2014	99,135	23,651	370,545	113,891	607,222	10,349	754	232,889	865	244,857	852,079

Table 11. Catches of albacore, bigeye, skipjack and yellowfin in the WCPO

YEAR	ALBACORE		BIGEYE		SKIPJACK		YELLOWFIN		TOTAL
	TONNES	%	TONNES	%	TONNES	%	TONNES	%	
1960	31,463	13	45,025	19	89,938	37	73,667	31	240,093
1961	32,922	11	39,380	13	156,736	51	75,438	25	304,476
1962	37,602	11	36,868	11	181,624	53	83,944	25	340,038
1963	26,815	10	44,346	16	122,703	46	75,756	28	269,620
1964	26,652	8	32,380	10	182,918	58	74,148	23	316,098
1965	28,724	10	31,329	11	155,221	54	73,629	25	288,903
1966	52,180	12	33,152	8	249,512	58	93,068	22	427,912
1967	55,403	15	35,908	10	204,817	56	68,566	19	364,694
1968	61,379	17	29,868	8	195,008	53	81,406	22	367,661
1969	71,137	13	34,161	6	351,025	65	87,023	16	543,346
1970	71,496	11	39,485	6	423,050	67	98,844	16	632,875
1971	96,125	15	41,672	7	380,818	61	104,313	17	622,928
1972	106,697	21	55,450	11	237,744	46	115,286	22	515,177
1973	129,538	20	46,728	7	328,725	52	128,049	20	633,040
1974	112,827	17	48,942	8	356,164	55	130,919	20	648,852
1975	83,864	15	65,495	11	288,284	50	140,345	24	577,988
1976	131,620	18	77,941	11	357,167	50	151,904	21	718,632
1977	79,436	11	77,481	10	403,590	54	182,275	25	742,782
1978	105,771	13	60,651	8	449,018	57	175,871	22	791,311
1979	84,878	11	67,108	9	412,547	54	195,458	26	759,991
1980	94,123	11	67,252	8	451,307	54	215,815	26	828,497
1981	86,385	11	59,914	7	434,970	54	220,430	27	801,699
1982	86,847	10	69,289	8	478,546	56	221,075	26	855,757
1983	64,112	6	73,528	7	650,352	61	274,012	26	1,062,004
1984	73,452	6	80,293	7	726,660	63	271,272	24	1,151,677
1985	76,034	8	82,350	8	567,263	56	280,273	28	1,005,920
1986	71,045	6	84,521	7	724,313	63	261,924	23	1,141,803
1987	60,625	5	100,805	9	668,025	59	309,133	27	1,138,588
1988	62,279	5	92,590	7	805,563	64	305,338	24	1,265,770
1989	69,949	5	99,281	8	781,360	60	353,660	27	1,304,250
1990	60,990	4	115,998	8	854,147	60	393,720	28	1,424,855
1991	56,449	3	99,510	6	1,073,169	65	420,683	25	1,649,811
1992	62,483	4	118,445	8	968,767	61	428,646	27	1,578,341
1993	71,723	5	102,713	7	923,772	63	369,497	25	1,467,705
1994	91,696	6	116,890	7	987,223	62	409,241	25	1,605,050
1995	89,851	6	105,853	7	1,019,647	63	405,168	25	1,620,519
1996	88,874	5	110,547	7	1,017,270	63	408,246	25	1,624,937
1997	109,798	7	152,836	9	909,915	55	495,043	30	1,667,592
1998	107,373	5	165,622	8	1,174,372	57	596,550	29	2,043,917
1999	127,428	7	147,512	8	1,053,848	57	509,888	28	1,838,676
2000	96,302	5	132,005	7	1,164,767	60	557,523	29	1,950,597
2001	114,463	6	133,607	7	1,089,463	59	522,700	28	1,860,233
2002	140,122	7	155,888	8	1,265,455	62	478,462	23	2,039,927
2003	110,643	5	127,306	6	1,260,323	62	534,295	26	2,032,567
2004	114,461	5	177,973	8	1,357,963	61	571,444	26	2,221,841
2005	99,759	5	140,907	6	1,404,304	64	542,796	25	2,187,766
2006	98,291	4	151,544	7	1,502,445	67	473,940	21	2,226,220
2007	121,628	5	137,070	6	1,654,655	68	506,961	21	2,420,314
2008	99,250	4	145,279	6	1,627,984	66	599,881	24	2,472,394
2009	129,154	5	144,552	6	1,792,632	69	534,257	21	2,600,595
2010	119,168	5	129,785	5	1,694,169	68	551,568	22	2,494,690
2011	110,138	5	153,241	7	1,539,530	66	515,028	22	2,317,937
2012	136,874	5	154,294	6	1,771,848	67	585,803	22	2,648,819
2013	134,245	5	142,199	5	1,830,821	69	547,869	21	2,655,134
2014	125,150	4	154,601	5	1,947,590	69	607,222	21	2,834,563

Table 12. Catches of albacore, bigeye, skipjack and yellowfin in the EPO

YEAR	ALBACORE		BIGEYE		SKIPJACK		YELLOWFIN		TOTAL
	TONNES	%	TONNES	%	TONNES	%	TONNES	%	
1960	23,292	12	17,746	9	46,059	24	107,968	55	195,065
1961	15,862	6	52,642	21	75,129	30	108,727	43	252,360
1962	22,659	10	45,670	20	77,102	34	78,240	35	223,671
1963	29,799	11	66,757	24	101,931	37	74,706	27	273,193
1964	22,586	10	46,406	20	65,674	28	100,020	43	234,686
1965	17,939	8	29,395	13	84,969	39	88,263	40	220,566
1966	17,938	9	35,302	17	66,307	33	83,888	41	203,435
1967	22,524	8	38,880	14	127,982	47	80,773	30	270,159
1968	26,249	10	39,966	16	77,110	31	109,076	43	252,401
1969	22,646	8	53,164	19	64,894	23	138,055	50	278,759
1970	26,809	9	35,752	13	62,170	22	161,138	56	285,869
1971	24,517	8	34,256	12	112,883	39	120,658	41	292,314
1972	29,548	10	40,225	14	37,504	13	188,276	64	295,553
1973	18,763	6	54,355	16	49,020	15	210,491	63	332,629
1974	25,257	7	38,515	11	87,557	24	208,234	58	359,563
1975	23,051	6	48,343	12	134,732	33	199,864	49	405,990
1976	20,577	4	71,584	15	136,918	30	234,378	51	463,457
1977	24,024	6	85,249	21	94,085	23	199,366	50	402,724
1978	31,108	7	89,198	19	179,665	38	173,980	37	473,951
1979	10,953	3	67,533	17	141,503	35	187,124	46	407,113
1980	11,569	3	86,403	22	138,102	35	158,862	40	394,936
1981	20,283	5	68,344	17	126,001	32	178,510	45	393,138
1982	12,522	4	60,349	20	104,669	34	127,534	42	305,074
1983	15,729	6	64,694	27	61,975	26	99,680	41	242,078
1984	21,857	8	55,268	19	63,611	22	149,465	52	290,201
1985	14,841	4	72,398	20	52,002	14	225,939	62	365,180
1986	11,284	2	105,185	22	67,745	14	286,071	61	470,285
1987	12,977	3	101,347	22	66,466	14	286,164	61	466,954
1988	15,771	3	74,313	16	92,127	19	296,428	62	478,639
1989	9,501	2	72,994	15	98,921	21	299,436	62	480,852
1990	10,850	2	104,851	21	77,107	16	301,522	61	494,330
1991	11,481	3	109,121	24	65,890	15	265,970	59	452,462
1992	23,075	5	92,000	20	87,294	19	252,514	56	454,883
1993	15,605	4	82,190	19	89,919	20	251,486	57	439,200
1994	20,618	5	107,065	24	74,170	17	243,546	55	445,399
1995	14,075	3	104,959	21	134,288	27	239,364	49	492,686
1996	16,112	3	109,017	22	107,841	22	260,616	53	493,586
1997	17,279	3	116,872	21	156,947	28	272,059	48	563,157
1998	25,913	5	91,132	17	142,846	27	275,909	51	535,800
1999	26,464	4	88,146	13	265,203	39	298,091	44	677,904
2000	23,275	4	142,498	22	204,673	31	282,626	43	653,072
2001	33,336	5	129,930	18	145,257	20	416,746	57	725,269
2002	30,154	4	131,876	17	154,299	20	439,537	58	755,866
2003	45,538	5	113,971	13	278,578	33	407,896	48	845,983
2004	40,834	6	111,269	17	201,010	31	290,887	45	644,000
2005	27,203	4	109,352	16	266,540	39	283,893	41	686,988
2006	32,992	5	117,679	19	297,914	48	178,089	28	626,674
2007	31,128	6	93,342	18	209,744	41	180,128	35	514,342
2008	26,627	4	101,192	16	298,323	48	195,181	31	621,323
2009	31,619	5	108,097	17	231,974	37	246,954	40	618,644
2010	34,048	6	94,784	18	150,324	28	260,754	48	539,910
2011	37,023	6	89,142	14	278,294	45	216,004	35	620,463
2012	41,571	7	102,150	16	269,935	43	212,607	34	626,263
2013	43,072	7	83,358	13	281,046	44	229,226	36	636,702
2014	43,072	7	93,532	14	264,620	41	244,857	38	646,081

Table 13. Catches of albacore, bigeye, skipjack and yellowfin in the Pacific Ocean

YEAR	ALBACORE		BIGEYE		SKIPJACK		YELLOWFIN		TOTAL
	TONNES	%	TONNES	%	TONNES	%	TONNES	%	
1960	85,707	18	62,771	13	135,997	29	181,635	39	466,110
1961	76,398	13	92,022	16	231,865	40	184,165	32	584,450
1962	82,562	14	82,538	14	258,726	44	162,184	28	586,010
1963	100,185	17	111,103	19	224,634	38	150,462	26	586,384
1964	85,414	15	78,786	13	248,592	42	174,168	30	586,960
1965	99,009	18	60,724	11	240,190	43	161,892	29	561,815
1966	105,353	16	68,454	10	315,819	47	176,956	27	666,582
1967	127,663	19	74,788	11	332,799	49	149,339	22	684,589
1968	102,826	16	69,834	11	272,118	43	190,482	30	635,260
1969	100,966	12	87,325	11	415,919	50	225,078	27	829,288
1970	105,911	11	75,237	8	485,220	52	259,982	28	926,350
1971	133,348	14	75,928	8	493,701	53	224,971	24	927,948
1972	152,045	18	95,675	12	275,248	33	303,562	37	826,530
1973	154,422	16	101,083	10	377,745	39	338,540	35	971,790
1974	149,330	15	87,457	9	443,721	44	339,153	33	1,019,661
1975	113,804	11	113,838	11	423,016	43	340,209	34	990,867
1976	155,028	13	149,525	13	494,085	42	386,282	33	1,184,920
1977	102,141	9	162,730	14	497,675	43	381,641	33	1,144,187
1978	134,054	11	149,849	12	628,683	50	349,851	28	1,262,437
1979	98,292	8	134,641	12	554,050	47	382,582	33	1,169,565
1980	107,775	9	153,655	13	589,409	48	374,677	31	1,225,516
1981	106,185	9	128,258	11	560,971	47	398,940	33	1,194,354
1982	99,778	9	129,638	11	583,215	50	348,609	30	1,161,240
1983	80,643	6	138,222	11	712,327	55	373,692	29	1,304,884
1984	95,904	7	135,561	9	790,271	55	420,737	29	1,442,473
1985	90,739	7	154,748	11	619,265	45	506,212	37	1,370,964
1986	81,934	5	189,706	12	792,058	49	547,995	34	1,611,693
1987	74,082	5	202,152	13	734,491	46	595,297	37	1,606,022
1988	83,617	5	166,903	10	897,690	51	601,766	34	1,749,976
1989	94,281	5	172,275	10	880,281	49	653,096	36	1,799,933
1990	90,381	5	220,849	11	931,254	48	695,242	36	1,937,726
1991	73,534	3	208,631	10	1,139,059	54	686,653	33	2,107,877
1992	94,061	5	210,445	10	1,056,061	52	681,160	33	2,041,727
1993	90,238	5	184,903	10	1,013,691	53	620,983	33	1,909,815
1994	116,152	6	223,955	11	1,061,393	52	652,787	32	2,054,287
1995	104,959	5	210,812	10	1,153,935	55	644,532	30	2,114,238
1996	116,957	5	219,564	10	1,125,111	53	668,862	31	2,130,494
1997	141,576	6	269,708	12	1,066,862	48	767,102	34	2,245,248
1998	144,737	6	256,754	10	1,317,218	51	872,459	34	2,591,168
1999	161,818	6	235,658	9	1,319,051	52	807,979	32	2,524,506
2000	130,802	5	274,503	10	1,369,440	52	840,149	32	2,614,894
2001	145,397	6	263,537	10	1,234,720	48	939,446	36	2,583,100
2002	178,525	6	287,764	10	1,419,754	51	917,999	33	2,804,042
2003	157,013	5	241,277	8	1,538,901	53	942,191	33	2,879,382
2004	155,658	5	289,242	10	1,558,973	54	862,331	30	2,866,204
2005	130,043	5	250,259	9	1,670,844	58	826,689	29	2,877,835
2006	132,205	5	269,223	9	1,800,359	63	652,029	23	2,853,816
2007	153,235	5	230,412	8	1,864,399	64	687,089	23	2,935,135
2008	130,995	4	246,471	8	1,926,307	62	795,062	26	3,098,835
2009	167,015	5	252,649	8	2,024,606	63	781,211	24	3,225,481
2010	157,515	5	224,569	7	1,844,493	61	812,322	27	3,038,899
2011	146,550	5	242,383	8	1,817,824	62	731,032	25	2,937,789
2012	179,703	5	256,444	8	2,041,783	62	798,410	24	3,276,340
2013	178,415	5	225,557	7	2,111,867	64	777,095	24	3,292,934
2014	173,702	5	248,133	7	2,212,210	63	852,079	24	3,486,124

Table 14. Global catches of albacore, bigeye, skipjack and yellowfin

YEAR	ALBACORE		BIGEYE		SKIPJACK		YELLOWFIN		TOTAL
	TONNES	%	TONNES	%	TONNES	%	TONNES	%	
1960	161,181	23	88,048	13	155,782	22	293,249	42	698,260
1961	146,524	18	124,098	15	253,353	31	284,369	35	808,344
1962	179,312	21	124,222	14	286,687	33	274,099	32	864,320
1963	192,066	22	150,516	18	263,950	31	248,781	29	855,313
1964	195,404	22	120,296	14	287,607	33	277,314	31	880,621
1965	203,023	23	119,244	14	290,750	33	265,353	30	878,370
1966	195,951	20	117,633	12	370,217	38	291,029	30	974,830
1967	225,080	23	124,652	13	391,386	39	254,044	26	995,162
1968	192,556	19	130,908	13	354,667	34	362,084	35	1,040,215
1969	197,162	16	153,306	13	481,746	40	383,854	32	1,216,068
1970	189,341	15	143,025	11	578,370	45	374,816	29	1,285,552
1971	227,988	17	152,633	11	613,821	46	340,147	25	1,334,589
1972	246,734	20	161,249	13	388,976	31	440,199	36	1,237,158
1973	251,592	18	173,982	12	505,534	36	472,824	34	1,403,932
1974	248,620	16	178,193	12	615,086	40	486,928	32	1,528,827
1975	184,759	13	211,283	15	518,521	36	506,146	36	1,420,709
1976	247,134	15	222,708	14	614,231	37	554,502	34	1,638,575
1977	190,096	11	252,197	15	649,391	39	578,110	35	1,669,794
1978	225,434	13	251,994	14	778,942	43	541,816	30	1,798,186
1979	190,713	11	214,124	13	692,335	42	562,054	34	1,659,226
1980	183,350	11	251,758	14	755,894	43	552,592	32	1,743,594
1981	180,719	10	230,702	13	748,250	42	603,688	34	1,763,359
1982	197,808	11	246,388	14	797,459	44	573,014	32	1,814,669
1983	167,689	9	247,345	13	920,585	47	606,025	31	1,941,644
1984	172,703	8	250,175	12	1,031,415	49	642,995	31	2,097,288
1985	177,401	8	285,185	13	879,882	41	788,161	37	2,130,629
1986	203,418	8	312,322	13	1,065,479	44	841,301	35	2,422,520
1987	187,782	8	323,005	13	1,023,071	42	903,548	37	2,437,406
1988	180,209	7	306,900	11	1,243,587	46	953,481	36	2,684,177
1989	178,283	6	319,757	12	1,246,858	45	1,021,305	37	2,766,203
1990	192,512	6	379,209	13	1,305,549	43	1,130,506	38	3,007,776
1991	158,961	5	381,907	12	1,605,174	50	1,087,847	34	3,233,889
1992	185,530	6	381,588	12	1,512,616	47	1,161,659	36	3,241,393
1993	182,261	6	398,406	12	1,531,861	47	1,175,907	36	3,288,435
1994	212,420	6	466,688	14	1,588,403	46	1,151,608	34	3,419,119
1995	195,581	6	456,457	13	1,654,660	48	1,131,572	33	3,438,270
1996	207,498	6	469,026	14	1,595,387	46	1,165,769	34	3,437,680
1997	228,715	6	527,100	15	1,552,395	44	1,245,495	35	3,553,705
1998	241,655	6	509,112	13	1,809,501	46	1,331,813	34	3,892,081
1999	266,537	7	515,098	13	1,911,750	48	1,304,459	33	3,997,844
2000	239,696	6	507,724	13	1,946,106	49	1,308,991	33	4,002,517
2001	259,038	7	478,151	12	1,822,740	46	1,421,142	36	3,981,071
2002	273,295	7	505,591	12	2,024,371	48	1,399,086	33	4,202,343
2003	244,815	6	462,601	11	2,163,840	49	1,510,239	34	4,381,495
2004	240,224	5	514,829	12	2,181,129	49	1,497,944	34	4,434,126
2005	219,244	5	445,364	10	2,372,854	53	1,426,730	32	4,464,192
2006	229,394	5	455,845	10	2,553,065	58	1,166,287	26	4,404,591
2007	244,938	6	433,155	10	2,460,142	58	1,097,724	26	4,235,959
2008	217,715	5	423,783	10	2,511,468	57	1,221,253	28	4,374,219
2009	247,968	6	442,717	10	2,612,697	58	1,163,043	26	4,466,425
2010	242,231	6	387,307	9	2,457,791	57	1,221,775	28	4,309,104
2011	228,966	5	413,567	10	2,422,193	57	1,160,804	27	4,225,530
2012	266,217	6	442,607	10	2,597,197	57	1,267,824	28	4,573,845
2013	264,929	6	411,720	9	2,667,281	58	1,246,509	27	4,590,439
2014	260,216	5	434,296	9	2,767,624	58	1,321,493	28	4,783,629

Table 15. Catches of albacore, bigeye, skipjack and yellowfin by ocean area. Estimates for the Atlantic Ocean and Indian Ocean for 2012 have been carried over from 2013, respectively.

YEAR	WCPO		EPO		ATLANTIC		INDIAN		TOTAL
	TONNES	%	TONNES	%	TONNES	%	TONNES	%	
1960	240,093	34	226,017	32	145,384	21	86,766	12	698,260
1961	304,476	38	279,974	35	135,230	17	88,664	11	808,344
1962	340,038	39	245,972	28	169,697	20	108,613	13	864,320
1963	269,620	32	316,764	37	188,394	22	80,535	9	855,313
1964	316,098	36	270,862	31	201,987	23	91,674	10	880,621
1965	288,903	33	272,912	31	222,199	25	94,356	11	878,370
1966	427,912	44	238,670	24	181,817	19	126,431	13	974,830
1967	364,694	37	319,895	32	184,929	19	125,644	13	995,162
1968	367,661	35	267,599	26	228,017	22	176,938	17	1,040,215
1969	543,346	45	285,942	24	236,694	19	150,086	12	1,216,068
1970	632,875	49	293,475	23	237,191	18	122,011	9	1,285,552
1971	622,928	47	305,020	23	290,958	22	115,683	9	1,334,589
1972	515,177	42	311,353	25	301,937	24	108,691	9	1,237,158
1973	633,040	45	338,750	24	304,880	22	127,262	9	1,403,932
1974	648,852	42	370,809	24	358,304	23	150,862	10	1,528,827
1975	577,988	41	412,879	29	302,119	21	127,723	9	1,420,709
1976	718,632	44	466,288	28	316,778	19	136,877	8	1,638,575
1977	742,782	44	401,405	24	372,569	22	153,038	9	1,669,794
1978	791,311	44	471,126	26	368,658	21	167,091	9	1,798,186
1979	759,991	46	409,574	25	338,014	20	151,647	9	1,659,226
1980	828,497	48	397,019	23	367,602	21	150,476	9	1,743,594
1981	801,699	45	392,655	22	416,733	24	152,272	9	1,763,359
1982	855,757	47	305,483	17	469,190	26	184,239	10	1,814,669
1983	1,062,004	55	242,880	13	430,504	22	206,256	11	1,941,644
1984	1,151,677	55	290,796	14	372,368	18	282,447	13	2,097,288
1985	1,005,920	47	365,044	17	429,982	20	329,683	15	2,130,629
1986	1,141,803	47	469,890	19	423,538	17	387,289	16	2,422,520
1987	1,138,588	47	467,434	19	403,643	17	427,741	18	2,437,406
1988	1,265,770	47	484,206	18	414,430	15	519,771	19	2,684,177
1989	1,304,250	47	495,683	18	424,384	15	541,886	20	2,766,203
1990	1,424,855	47	512,871	17	489,460	16	580,590	19	3,007,776
1991	1,649,811	51	458,066	14	539,051	17	586,961	18	3,233,889
1992	1,578,341	49	463,386	14	503,396	16	696,270	21	3,241,393
1993	1,467,705	45	442,110	13	554,088	17	824,532	25	3,288,435
1994	1,605,050	47	449,237	13	562,096	16	802,736	23	3,419,119
1995	1,620,519	47	493,719	14	514,855	15	809,177	24	3,438,270
1996	1,624,937	47	505,557	15	489,079	14	818,107	24	3,437,680
1997	1,667,592	47	577,656	16	452,083	13	856,374	24	3,553,705
1998	2,043,917	53	547,251	14	469,574	12	831,339	21	3,892,081
1999	1,838,676	46	685,830	17	502,204	13	971,134	24	3,997,844
2000	1,950,597	49	664,297	17	459,662	11	927,961	23	4,002,517
2001	1,860,233	47	722,867	18	484,624	12	913,347	23	3,981,071
2002	2,039,927	49	764,115	18	394,379	9	1,003,922	24	4,202,343
2003	2,032,567	46	846,815	19	424,528	10	1,077,585	25	4,381,495
2004	2,221,841	50	644,363	15	419,111	9	1,148,811	26	4,434,126
2005	2,187,766	49	690,069	15	399,550	9	1,186,807	27	4,464,192
2006	2,226,220	51	627,596	14	381,814	9	1,168,961	27	4,404,591
2007	2,420,314	57	514,821	12	367,237	9	933,587	22	4,235,959
2008	2,472,394	57	626,441	14	364,356	8	911,028	21	4,374,219
2009	2,600,595	58	624,886	14	392,792	9	848,152	19	4,466,425
2010	2,494,690	58	544,209	13	415,628	10	854,577	20	4,309,104
2011	2,317,937	55	619,852	15	449,641	11	838,100	20	4,225,530
2012	2,648,819	58	627,521	14	465,367	10	832,138	18	4,573,845
2013	2,655,134	58	637,800	14	465,367	10	832,138	18	4,590,439
2014	2,834,563	59	651,561	14	465,367	10	832,138	17	4,783,629

Table 16. Estimated Discards (tonnes) by longliners in the WCPFC Statistical Area
(2013-2014 data are provisional)

YEAR	ALBACORE			BIGEYE			YELLOWFIN			TOTAL		
	Retained + Discarded	Discarded	%	Retained + Discarded	Discarded	%	Retained + Discarded	Discarded	%	Retained + Discarded	Discarded	%
1994	65,031	5,892	9.1%	81,499	2,380	2.9%	86,051	4,062	4.7%	232,581	12,333	5.3%
1995	63,353	3,111	4.9%	69,378	1,263	1.8%	92,672	4,597	5.0%	225,403	8,970	4.0%
1996	64,546	3,098	4.8%	59,084	1,028	1.7%	93,043	1,191	1.3%	216,674	5,317	2.5%
1997	80,372	8,552	10.6%	71,199	2,684	3.8%	84,106	3,171	3.8%	235,676	14,407	6.1%
1998	90,039	11,246	12.5%	87,994	3,027	3.4%	83,708	2,737	3.3%	261,741	17,010	6.5%
1999	69,591	766	1.1%	75,720	750	1.0%	72,133	1,147	1.6%	217,444	2,662	1.2%
2000	69,860	279	0.4%	77,355	425	0.6%	97,402	575	0.6%	244,618	1,280	0.5%
2001	88,865	4,017	4.5%	79,081	395	0.5%	95,961	441	0.5%	263,908	4,854	1.8%
2002	94,586	4,937	5.2%	93,765	1,388	1.5%	97,377	1,782	1.8%	285,729	8,107	2.8%
2003	79,267	476	0.6%	84,404	1,393	1.7%	97,684	2,032	2.1%	261,355	3,900	1.5%
2004	78,945	2,029	2.6%	101,135	1,426	1.4%	105,669	1,659	1.6%	285,750	5,114	1.8%
2005	84,307	1,256	1.5%	77,927	483	0.6%	83,092	582	0.7%	245,325	2,321	0.9%
2006	86,414	1,184	1.4%	82,543	627	0.8%	78,663	669	0.9%	247,619	2,480	1.0%
2007	81,020	859	1.1%	79,753	367	0.5%	74,375	305	0.4%	235,148	1,531	0.7%
2008	80,351	1,334	1.7%	81,078	941	1.2%	77,688	2,066	2.7%	239,117	4,341	1.8%
2009	100,308	1,194	1.2%	77,982	62	0.1%	91,640	440	0.5%	269,930	1,696	0.6%
2010	105,028	1,586	1.5%	69,100	35	0.1%	85,235	247	0.3%	259,363	1,868	0.7%
2011	87,027	1,227	1.4%	73,684	52	0.1%	83,925	168	0.2%	244,635	1,447	0.6%
2012	100,834	252	0.3%	80,753	24	0.0%	80,068	328	0.4%	261,656	605	0.2%
2013	101,941	1,162	1.1%	65,103	2,617	4.0%	67,876	2,471	3.6%	234,920	6,250	2.7%
2014	100,993	242	0.2%	71,196	228	0.3%	80,364	434	0.5%	252,553	904	0.4%
Average	84,413	2,605	3.1%	78,083	1,028	1.3%	86,130	1,481	1.7%	248,626	5,114	2.1%

Table 17. Estimated Discards (tonnes) by purse seiners in tropical waters of the WCPFC Statistical Area, excluding the domestic fisheries of Indonesia and the Philippines

YEAR	SKIPJACK			YELLOWFIN			BIGEYE			TOTAL		
	Retained + Discarded	Discarded	%	Retained + Discarded	Discarded	%	Retained + Discarded	Discarded	%	Retained + Discarded	Discarded	%
1995	562,853	12,664	2.3%	180,110	1,063	0.6%	28,734	325	1.1%	771,697	14,052	1.8%
1996	546,868	17,937	3.3%	157,696	1,719	1.1%	38,773	876	2.3%	743,337	20,532	2.8%
1997	411,317	12,052	2.9%	271,396	1,873	0.7%	70,704	891	1.3%	753,417	14,815	2.0%
1998	580,194	17,232	3.0%	368,375	6,336	1.7%	64,472	774	1.2%	1,013,040	24,341	2.4%
1999	537,696	18,067	3.4%	287,221	5,744	2.0%	63,255	1,619	2.6%	888,172	25,430	2.9%
2000	623,130	29,973	4.8%	290,635	2,122	0.7%	39,511	1,193	3.0%	953,276	33,287	3.5%
2001	632,159	34,453	5.5%	272,634	2,099	0.8%	45,575	1,085	2.4%	950,368	37,637	4.0%
2002	815,022	40,914	5.0%	232,952	2,609	1.1%	55,137	717	1.3%	1,103,112	44,240	4.0%
2003	723,117	25,020	3.5%	274,034	4,905	1.8%	35,282	480	1.4%	1,032,433	30,405	2.9%
2004	782,143	34,336	4.4%	276,712	8,744	3.2%	63,843	1,954	3.1%	1,122,698	45,034	4.0%
2005	896,212	44,990	5.0%	314,662	7,111	2.3%	49,830	2,098	4.2%	1,260,704	54,199	4.3%
2006	972,415	22,366	2.3%	244,335	4,007	1.6%	48,829	669	1.4%	1,265,579	27,042	2.1%
2007	1,088,759	30,921	2.8%	277,040	3,158	1.1%	42,794	646	1.5%	1,408,593	34,725	2.5%
2008	1,018,143	20,363	2.0%	368,032	4,600	1.3%	49,998	1,270	2.5%	1,436,173	26,233	1.8%
2009	1,238,180	28,602	2.3%	279,173	4,160	1.5%	53,000	1,717	3.2%	1,570,354	34,479	2.2%
2010	1,142,816	15,199	1.3%	322,554	2,806	0.9%	51,032	745	1.5%	1,516,402	18,751	1.2%
2011	1,090,095	11,882	1.1%	284,456	2,219	0.8%	71,448	915	1.3%	1,445,999	15,015	1.0%
2012	1,300,952	19,644	1.5%	323,823	3,659	1.1%	61,537	591	1.0%	1,686,312	23,894	1.4%
2013	1,274,594	33,522	2.6%	299,004	4,306	1.4%	68,216	1,160	1.7%	1,641,814	38,987	2.4%
2014	1,401,401	44,004	3.1%	332,873	8,888	2.7%	63,226	1,100	1.7%	1,797,501	53,992	3.0%
Average	881,903	25,707	2.9%	282,886	4,106	1.5%	53,260	1,041	2.0%	1,218,049	30,855	2.5%

Table 18. Commercial catches of billfish in the WCPFC Statistical Area, by gear type and species

YEAR	LONGLINE					PURSE SEINE		
	BLUE MARLIN	BLACK MARLIN	STRIPED MARLIN	SWORD-FISH	SUB-TOTAL	BLUE MARLIN	BLACK MARLIN	SUB-TOTAL
1962	14,197	2,091	15,207	10,354	41,849	0	0	0
1963	11,583	2,100	12,384	9,741	35,808	0	0	0
1964	10,240	1,697	17,023	5,942	34,902	0	0	0
1965	8,303	2,260	13,298	8,176	32,037	0	0	0
1966	8,763	2,408	9,648	9,821	30,640	0	0	0
1967	7,287	2,362	11,506	10,643	31,798	0	0	0
1968	6,673	2,951	11,783	9,504	30,911	0	1	1
1969	7,091	2,619	8,500	8,945	27,155	0	1	1
1970	9,977	3,544	7,594	7,578	28,693	6	14	20
1971	6,450	3,776	6,373	8,615	25,214	8	19	27
1972	7,957	3,696	5,194	8,110	24,957	9	20	29
1973	7,483	3,793	5,550	7,303	24,129	14	31	45
1974	7,253	3,115	4,788	7,990	23,146	7	17	24
1975	7,079	3,281	3,764	8,519	22,643	7	17	24
1976	6,710	2,242	3,497	9,955	22,404	6	16	22
1977	7,020	2,427	2,948	9,583	21,978	9	21	30
1978	8,861	2,787	3,744	9,871	25,263	8	20	28
1979	9,414	2,395	5,059	11,178	28,046	13	29	42
1980	10,245	1,552	4,823	8,740	25,360	13	29	42
1981	10,332	2,009	4,773	10,111	27,225	30	60	90
1982	10,398	2,023	4,536	9,214	26,171	42	90	132
1983	9,005	1,741	3,476	10,108	24,330	67	132	199
1984	12,197	1,317	4,836	9,975	28,325	86	161	247
1985	9,667	1,048	5,509	12,415	28,639	69	137	206
1986	10,348	1,121	6,175	11,473	29,117	66	128	194
1987	14,403	1,533	5,558	12,930	34,424	73	145	218
1988	14,553	2,294	7,613	12,804	37,264	71	142	213
1989	11,893	1,207	6,646	10,695	30,441	86	169	255
1990	10,200	1,120	4,871	11,470	27,661	95	184	279
1991	10,842	1,449	5,237	12,713	30,241	135	253	388
1992	13,302	1,650	5,363	18,322	38,637	141	241	382
1993	15,854	1,428	10,600	19,637	47,519	142	246	388
1994	15,609	1,844	6,189	17,057	40,699	141	239	380
1995	18,044	1,335	7,189	15,714	42,282	144	242	386
1996	14,526	945	5,834	15,177	36,482	160	263	423
1997	12,544	964	5,010	18,175	36,693	179	270	449
1998	16,449	1,545	7,080	19,299	44,373	182	267	449
1999	14,573	1,927	5,882	20,539	42,921	153	235	388
2000	13,797	1,296	4,264	21,214	40,571	184	273	457
2001	15,583	1,498	4,779	18,286	40,146	189	257	446
2002	15,527	1,795	4,375	18,889	40,586	205	278	483
2003	24,193	2,031	5,364	20,236	51,824	214	283	497
2004	21,847	2,293	4,955	22,065	51,160	226	293	519
2005	20,126	2,734	4,277	19,776	46,913	848	628	1,476
2006	17,850	2,430	4,028	22,690	46,998	611	399	1,010
2007	15,035	1,773	3,406	24,835	45,049	824	268	1,092
2008	14,806	1,768	3,639	22,523	42,736	592	442	1,034
2009	14,795	1,972	2,827	19,759	39,353	579	344	923
2010	15,672	2,092	2,854	17,343	37,961	644	661	1,305
2011	14,773	1,738	3,676	17,999	38,186	752	429	1,181
2012	14,347	1,562	3,712	19,388	39,009	918	367	1,285
2013	15,580	1,671	3,083	17,850	38,184	647	562	1,209
2014	15,756	1,872	3,165	17,539	38,332	577	555	1,132

Table 18 continued

YEAR	OTHER COMMERCIAL GEARS					TOTAL
	BLUE MARLIN	BLACK MARLIN	STRIPED MARLIN	SWORD-FISH	SUB-TOTAL	
1962	1,023	65	0	38	1,126	42,975
1963	1,084	69	0	41	1,194	37,002
1964	1,187	73	2,366	1,203	4,829	39,731
1965	1,283	77	2,790	2,118	6,268	38,305
1966	1,379	82	1,676	1,934	5,071	35,711
1967	1,497	87	1,641	1,161	4,386	36,184
1968	1,528	92	1,255	1,883	4,758	35,670
1969	1,745	98	2,625	1,673	6,141	33,297
1970	1,850	125	1,184	1,895	5,054	33,767
1971	2,064	140	2,284	617	5,105	30,346
1972	2,154	146	1,369	436	4,105	29,091
1973	2,877	174	4,011	972	8,034	32,208
1974	3,238	201	3,930	1,789	9,158	32,328
1975	3,986	206	7,255	3,072	14,519	37,186
1976	3,603	175	4,163	4,138	12,079	34,505
1977	4,858	243	4,980	2,802	12,883	34,891
1978	3,604	156	6,035	2,855	12,650	37,941
1979	3,681	196	3,058	1,368	8,303	36,391
1980	3,631	177	4,008	2,308	10,124	35,526
1981	4,245	195	4,410	2,201	11,051	38,366
1982	3,904	175	2,997	1,643	8,719	35,022
1983	4,243	194	2,667	1,386	8,490	33,019
1984	3,536	211	3,060	1,420	8,227	36,799
1985	4,205	257	3,116	1,540	9,118	37,963
1986	4,045	268	4,181	1,633	10,127	39,438
1987	3,164	195	2,399	1,317	7,075	41,717
1988	3,750	222	2,880	1,552	8,404	45,881
1989	4,059	241	2,211	2,115	8,626	39,322
1990	5,251	342	2,489	1,388	9,470	37,410
1991	5,837	388	1,839	883	8,947	39,576
1992	3,046	218	1,515	1,393	6,172	45,191
1993	3,182	221	1,267	747	5,417	53,324
1994	4,673	289	1,824	924	7,710	48,789
1995	5,254	330	1,248	1,203	8,035	50,703
1996	5,688	339	912	1,260	8,199	45,104
1997	2,212	120	1,017	830	4,179	41,321
1998	2,365	138	1,421	1,082	5,006	49,828
1999	2,391	141	1,340	1,256	5,128	48,437
2000	1,558	96	1,380	1,404	4,438	45,466
2001	1,592	90	1,370	1,050	4,102	44,694
2002	1,611	99	1,587	1,452	4,749	45,818
2003	1,805	122	1,261	1,440	4,628	56,949
2004	1,825	126	1,466	1,383	4,800	56,479
2005	1,909	129	1,334	1,542	4,914	53,303
2006	1,955	142	1,308	1,447	4,852	52,860
2007	2,205	161	1,083	1,389	4,838	50,979
2008	3,784	186	1,446	1,227	6,643	50,413
2009	2,569	126	974	1,211	4,880	45,156
2010	2,794	126	1,042	856	4,818	44,084
2011	2,780	126	492	461	3,859	43,226
2012	3,109	147	741	1,886	5,883	46,177
2013	3,384	160	738	2,816	7,098	46,491
2014	3,411	160	742	2,817	7,130	46,596

Table 19. Commercial catches of billfish in the WCPFC Statistical Area, by species

YEAR	BLUE MARLIN		BLACK MARLIN		STRIPED MARLIN		SWORDFISH		TOTAL
	TONNES	%	TONNES	%	TONNES	%	TONNES	%	
1962	15,220	35	2,156	5	15,207	35	10,392	24	42,975
1963	12,667	34	2,169	6	12,384	33	9,782	26	37,002
1964	11,427	29	1,770	4	19,389	49	7,145	18	39,731
1965	9,586	25	2,337	6	16,088	42	10,294	27	38,305
1966	10,142	28	2,490	7	11,324	32	11,755	33	35,711
1967	8,784	24	2,449	7	13,147	36	11,804	33	36,184
1968	8,201	23	3,044	9	13,038	37	11,387	32	35,670
1969	8,836	27	2,718	8	11,125	33	10,618	32	33,297
1970	11,833	35	3,683	11	8,778	26	9,473	28	33,767
1971	8,522	28	3,935	13	8,657	29	9,232	30	30,346
1972	10,120	35	3,862	13	6,563	23	8,546	29	29,091
1973	10,374	32	3,998	12	9,561	30	8,275	26	32,208
1974	10,498	32	3,333	10	8,718	27	9,779	30	32,328
1975	11,072	30	3,504	9	11,019	30	11,591	31	37,186
1976	10,319	30	2,433	7	7,660	22	14,093	41	34,505
1977	11,887	34	2,691	8	7,928	23	12,385	35	34,891
1978	12,473	33	2,963	8	9,779	26	12,726	34	37,941
1979	13,108	36	2,620	7	8,117	22	12,546	34	36,391
1980	13,889	39	1,758	5	8,831	25	11,048	31	35,526
1981	14,607	38	2,264	6	9,183	24	12,312	32	38,366
1982	14,344	41	2,288	7	7,533	22	10,857	31	35,022
1983	13,315	40	2,067	6	6,143	19	11,494	35	33,019
1984	15,819	43	1,689	5	7,896	21	11,395	31	36,799
1985	13,941	37	1,442	4	8,625	23	13,955	37	37,963
1986	14,459	37	1,517	4	10,356	26	13,106	33	39,438
1987	17,640	42	1,873	4	7,957	19	14,247	34	41,717
1988	18,374	40	2,658	6	10,493	23	14,356	31	45,881
1989	16,038	41	1,617	4	8,857	23	12,810	33	39,322
1990	15,546	42	1,646	4	7,360	20	12,858	34	37,410
1991	16,814	42	2,090	5	7,076	18	13,596	34	39,576
1992	16,489	36	2,109	5	6,878	15	19,715	44	45,191
1993	19,178	36	1,895	4	11,867	22	20,384	38	53,324
1994	20,423	42	2,372	5	8,013	16	17,981	37	48,789
1995	23,442	46	1,907	4	8,437	17	16,917	33	50,703
1996	20,374	45	1,547	3	6,746	15	16,437	36	45,104
1997	14,935	36	1,354	3	6,027	15	19,005	46	41,321
1998	18,996	38	1,950	4	8,501	17	20,381	41	49,828
1999	17,117	35	2,303	5	7,222	15	21,795	45	48,437
2000	15,539	34	1,665	4	5,644	12	22,618	50	45,466
2001	17,364	39	1,845	4	6,149	14	19,336	43	44,694
2002	17,343	38	2,172	5	5,962	13	20,341	44	45,818
2003	26,212	46	2,436	4	6,625	12	21,676	38	56,949
2004	23,898	42	2,712	5	6,421	11	23,448	42	56,479
2005	22,883	43	3,491	7	5,611	11	21,318	40	53,303
2006	20,416	39	2,971	6	5,336	10	24,137	46	52,860
2007	18,064	35	2,202	4	4,489	9	26,224	51	50,979
2008	19,182	38	2,396	5	5,085	10	23,750	47	50,413
2009	17,943	40	2,442	5	3,801	8	20,970	46	45,156
2010	19,110	43	2,879	7	3,896	9	18,199	41	44,084
2011	18,305	42	2,293	5	4,168	10	18,460	43	43,226
2012	18,374	40	2,076	4	4,453	10	21,274	46	46,177
2013	19,611	42	2,393	5	3,821	8	20,666	44	46,491
2014	19,744	42	2,587	6	3,909	8	20,356	44	46,596

Table 20. Commercial catches of striped marlin and swordfish in the WCPFC Statistical Area north of the equator

YEAR	STRIPED MARLIN		SWORDFISH		TOTAL
	TONNES	%	TONNES	%	
1962	12,165	55	9,857	45	22,022
1963	9,550	51	9,029	49	18,579
1964	17,913	73	6,745	27	24,658
1965	14,194	60	9,377	40	23,571
1966	9,099	46	10,676	54	19,775
1967	11,802	52	10,920	48	22,722
1968	11,903	54	10,083	46	21,986
1969	10,107	51	9,694	49	19,801
1970	7,574	47	8,517	53	16,091
1971	6,572	47	7,290	53	13,862
1972	4,550	41	6,606	59	11,156
1973	7,496	53	6,769	47	14,265
1974	7,044	47	7,816	53	14,860
1975	9,788	48	10,406	52	20,194
1976	6,222	34	11,904	66	18,126
1977	7,021	38	11,643	62	18,664
1978	8,399	41	11,853	59	20,252
1979	6,605	37	11,011	63	17,616
1980	7,702	45	9,326	55	17,028
1981	7,200	42	10,047	58	17,247
1982	5,315	38	8,625	62	13,940
1983	4,948	33	10,133	67	15,081
1984	6,491	40	9,776	60	16,267
1985	7,312	38	11,990	62	19,302
1986	9,294	45	11,168	55	20,462
1987	6,629	36	11,903	64	18,532
1988	8,659	45	10,697	55	19,356
1989	6,510	39	10,262	61	16,772
1990	5,816	36	10,315	64	16,131
1991	5,769	34	11,179	66	16,948
1992	5,521	26	15,817	74	21,338
1993	10,364	37	17,600	63	27,964
1994	6,025	29	14,760	71	20,785
1995	6,550	32	13,962	68	20,512
1996	5,059	29	12,522	71	17,581
1997	4,329	24	13,694	76	18,023
1998	5,679	29	14,073	71	19,752
1999	4,936	25	15,022	75	19,958
2000	4,047	20	16,169	80	20,216
2001	4,331	25	13,060	75	17,391
2002	3,743	22	13,250	78	16,993
2003	3,962	21	14,749	79	18,711
2004	3,970	21	14,674	79	18,644
2005	3,466	20	13,475	80	16,941
2006	3,280	19	14,071	81	17,351
2007	2,701	15	14,840	85	17,541
2008	3,228	20	13,039	80	16,267
2009	2,118	15	12,154	85	14,272
2010	2,475	18	11,007	82	13,482
2011	2,669	18	12,398	82	15,067
2012	3,156	18	14,106	82	17,262
2013	2,807	17	13,329	83	16,136
2014	2,020	23	6,832	77	8,852

Table 21. Commercial catches of striped marlin and swordfish in the WCPFC Statistical Area south of the equator

YEAR	STRIPED MARLIN		SWORDFISH		TOTAL
	TONNES	%	TONNES	%	
1962	3,042	85	535	15	3,577
1963	2,834	79	753	21	3,587
1964	1,473	79	397	21	1,870
1965	1,890	67	914	33	2,804
1966	2,139	67	1,044	33	3,183
1967	1,345	60	884	40	2,229
1968	1,135	47	1,304	53	2,439
1969	1,018	52	924	48	1,942
1970	1,204	56	956	44	2,160
1971	2,085	52	1,942	48	4,027
1972	2,013	51	1,940	49	3,953
1973	2,065	58	1,506	42	3,571
1974	1,674	46	1,963	54	3,637
1975	1,230	51	1,185	49	2,415
1976	1,438	40	2,189	60	3,627
1977	906	55	741	45	1,647
1978	1,380	61	873	39	2,253
1979	1,512	50	1,535	50	3,047
1980	1,129	40	1,722	60	2,851
1981	1,983	47	2,265	53	4,248
1982	2,219	50	2,232	50	4,451
1983	1,195	47	1,361	53	2,556
1984	1,406	46	1,619	54	3,025
1985	1,313	40	1,966	60	3,279
1986	1,060	35	1,938	65	2,998
1987	1,328	36	2,344	64	3,672
1988	1,833	33	3,655	67	5,488
1989	2,344	48	2,548	52	4,892
1990	1,535	38	2,543	62	4,078
1991	1,288	35	2,417	65	3,705
1992	1,305	25	3,898	75	5,203
1993	1,503	35	2,783	65	4,286
1994	1,988	38	3,230	62	5,218
1995	1,886	39	2,956	61	4,842
1996	1,687	30	3,915	70	5,602
1997	1,698	24	5,311	76	7,009
1998	2,761	30	6,309	70	9,070
1999	2,285	25	6,773	75	9,058
2000	1,597	20	6,449	80	8,046
2001	1,818	22	6,275	78	8,093
2002	2,219	24	7,091	76	9,310
2003	2,663	28	6,927	72	9,590
2004	2,453	23	8,045	77	10,498
2005	1,816	21	6,722	79	8,538
2006	1,795	17	8,925	83	10,720
2007	1,734	14	10,681	86	12,415
2008	1,905	15	10,454	85	12,359
2009	1,863	18	8,350	82	10,213
2010	1,597	17	7,653	83	9,250
2011	1,778	16	9,167	84	10,945
2012	1,735	14	10,328	86	12,063
2013	1,343	12	9,798	88	11,141
2014	747	21	2,787	79	3,534

Table 22. Commercial catches of albacore, striped marlin and swordfish in the South Pacific Ocean

YEAR	ALBACORE		STRIPED MARLIN		SWORDFISH		TOTAL
	TONNES	%	TONNES	%	TONNES	%	
1962	35,219	100	0	0	0	0	35,219
1963	31,111	100	0	0	0	0	31,111
1964	22,824	100	3	0	3	0	22,830
1965	25,455	100	4	0	3	0	25,462
1966	38,661	100	86	0	35	0	38,782
1967	43,957	99	191	0	50	0	44,198
1968	32,382	99	229	1	106	0	32,717
1969	24,805	99	106	0	31	0	24,942
1970	34,925	99	261	1	40	0	35,226
1971	38,630	83	5,237	11	2,451	5	46,318
1972	39,521	85	4,307	9	2,604	6	46,432
1973	47,330	89	3,395	6	2,727	5	53,452
1974	34,049	86	3,042	8	2,556	6	39,647
1975	23,600	84	2,629	9	1,935	7	28,164
1976	29,082	80	3,919	11	3,398	9	36,399
1977	38,740	88	2,797	6	2,305	5	43,842
1978	34,676	86	2,827	7	2,670	7	40,173
1979	27,076	80	3,966	12	2,636	8	33,678
1980	32,541	83	3,533	9	3,322	8	39,396
1981	34,784	80	4,843	11	3,632	8	43,259
1982	30,788	79	4,719	12	3,312	9	38,819
1983	25,092	81	3,153	10	2,766	9	31,011
1984	24,704	83	2,447	8	2,641	9	29,792
1985	32,328	87	2,235	6	2,642	7	37,205
1986	36,590	86	2,722	6	3,293	8	42,605
1987	25,052	75	4,170	13	4,132	12	33,354
1988	37,867	80	3,657	8	5,717	12	47,241
1989	49,076	87	3,985	7	3,627	6	56,688
1990	36,062	81	3,903	9	4,736	11	44,701
1991	35,600	81	3,349	8	4,854	11	43,803
1992	38,668	79	3,202	7	7,186	15	49,056
1993	35,438	80	3,461	8	5,135	12	44,034
1994	42,318	82	4,097	8	5,442	10	51,857
1995	38,467	83	3,305	7	4,779	10	46,551
1996	34,359	79	3,536	8	5,618	13	43,513
1997	39,490	77	3,999	8	7,631	15	51,120
1998	50,371	79	4,506	7	8,621	14	63,498
1999	39,614	78	3,044	6	7,957	16	50,615
2000	47,338	82	2,283	4	8,182	14	57,803
2001	58,344	81	2,847	4	10,401	15	71,592
2002	73,240	79	4,090	4	15,365	17	92,695
2003	62,477	79	4,095	5	12,309	16	78,881
2004	61,871	74	3,481	4	17,766	21	83,118
2005	63,566	78	2,831	3	14,694	18	81,091
2006	62,444	76	2,617	3	17,193	21	82,254
2007	58,591	75	2,333	3	16,917	22	77,841
2008	62,740	76	2,404	3	17,000	21	82,144
2009	82,901	80	2,282	2	18,831	18	104,014
2010	88,942	80	2,128	2	19,679	18	110,749
2011	66,476	73	2,785	3	21,188	23	90,449
2012	87,895	77	2,658	2	23,358	21	113,911
2013	84,835	78	2,323	2	21,517	20	108,675
2014	83,033	77	2,253	2	21,854	20	107,140