



**SCIENTIFIC COMMITTEE
SEVENTH REGULAR SESSION**

9-17 August 2011
Pohnpei, Federated States of Micronesia

**ANNUAL REPORT TO THE COMMISSION
PART 1: INFORMATION ON FISHERIES, RESEARCH, AND STATISTICS**

WCPFC-SC7-AR/CCM-06

FEDERATED STATES OF MICRONESIA

Summary

The current estimate of the total catch by the 30 FSM purse seine and longline vessels (national fleet) within the WCPFC Convention Area for the year 2010 is 24,014mt. Skipjack, yellowfin and bigeye the key target species accounted for 97% of the catches with the remaining 3% of non-target species catch. The total number of purse seine vessels employed by FSM is 7 purse seiners and 23 longline vessels in 2010.

By species composition, skipjack accounted for 81% (19,395mt) with yellowfin at 13% (3,264) and bigeye 5% (1,094mt), and other species of 1% (261mt). In general, catch for our domestic fleet within the convention area has increased 15% generally over 2009, primarily by our purse seine fleet, but our longline fleet has showed a decreased total catch compared to last year's (2009).

At the present time, data for artisanal fishery is not available as these falls within the states responsibility. The total FSM EEZ catch in 2010 by all gear types is recorded as 155,753mt (96% by purse seine, <2% by Longline, >2% Pole and Line), comprising of 87% skipjack, 7% yellowfin, 2% bigeye tuna, and 4% other species. Catch by flag, Japan accounted for 30% followed by the FSMA with 23% and Chinese Taipei of 18% making them the three main purse seine fleets with the most effort in the zone in 2010. The total longline EEZ catch is reported as 2,831mt with bigeye accounting for 57%, yellowfin 40%, and 3% of other species. By flag, Japan accounted for 41% of the total longline catch followed by FSM 25% and Chinese Taipei 25%, and China 9%.

In terms of effort, both purse seine and longline efforts within the FSM EEZ is shown increased in 2010, slightly compared to 2009. In contrast, the domestic purse seine effort within the WCPO area increased slightly, where as the domestic longline fleet catch has shown decreased slightly, compared to 2009.

The FSM Observer program operates with a pool of 74 observers in 2010, The FSM National Fisheries Observer Program made 385 successful placements; with longliner accounting for 1 trip, 3 pole and line, and 381 purse seiners. The increase of number of observer trips by the FSM National Observer Program is mainly by the increased number of employed fisheries observers recruited in 2009 and 2010 for monitoring the FAD Closure Periods, 100% Observer Coverage, and Catch Retention measures by the WCPFC.

The Port Sampling coverage for 2010 is showing as 97% (about the same as of 2009) for the purse seiners and 81% for the longliners.

There were a total of 166 purse seine vessels reported to transship in FSM port in 2010 with a total volume of 146,220 of tuna transshipped. By species, skipjack accounted for 97% with 3% of mixed yellowfin and bigeye. Pohnpei remains the most active port in FSM. The majority of the purse seine vessels unloading in FSM were by Chinese Taipei purse seiners accounting for 79 transshipments followed by Korea with 35, China 19, 18 FSMA, 11 FSM, and 4 US unloading for 2010.

A total of 486 unloading for longline was reported in 2010 for a total of 1,981 (43% of BET, 24% YFT, 19% of billfish and 14% other bi-catch species). Most of the unloaded volume by longliners was by the FSM flagged (46%), followed by Chinese Taipei of 39%, and 15% by China.

1 Annual Fisheries Information

1.1 Flag-State Reporting

There were 30 FSM flagged vessels authorized to fish in the Convention Area in 2010. The processed 2010 logsheet data indicated that 23 FSM flagged longline vessels and 7 purse seine vessels submitted catch data for fish caught within the Convention Area. In 2009, 6 FSM flagged longline vessels operated and based out in the Republic of the Marshall Islands (RMI) and the catch is attributed to Marshalls. *Noting that the RMI based and operated FSM flagged longline vessels' catches for 2010 is included in the WCPFC FSM flagged vessels' total catches.*

The total catch of the three main target species, (YFT, BET and SKJ) by FSM flagged vessels for the year 2010 within the WCPFC Convention Area is estimated to be 24,014mt (an increase of 3,312mt over 2009's catch). By gear type, purse seiners accounted for 93% (22,448mt) and longliners 7% (1,566mt). Other species catch totals by purse seine is recorded as 0mt, while longline is accounted for 261mt (Table 1 and 2).

1.1.1 FSM Purse Seine Catch in the WCPFC Convention Area

In 2010, FSM purse seine vessels recorded a total catch of 22,448mt in the Convention Area, as illustrated in Table 1. Approximately 86% (19,395mt) of the total purse seine catch within the WCPFC Convention Area was skipjack and 12% (2,858mt) yellowfin tuna. There was an indication of bigeye tuna catch for 2% (195mt). In 2010, there was an overall fishing effort of 1,285 days by 7 FSM purse seine vessels in the convention area. *This report further note that effort by fishing days is sourced from logsheet data for all FSM flagged Purse Seine vessels within the WCPO area, including effort within the FSM's EEZ.*

FSM purse seiners concentrated most of their fishing effort in the lower equatorial region, mostly within the lower FSM waters and dispersing into the upper waters of PNG, towards the south. This fishing pattern appears to be slightly opposite as that of 2009 but the total catch increased (over 3,000mt) over the last two years' catches.

Table 1. Annual catch and effort estimates for the FSM purse-seine fleet, by species in the WCPFC Convention Area, 2006-2010.

Year	Vessels	Days	Catch (Metric tonnes)			
			SKJ	YFT	BET	Total
2006	3	660	9,215	958	159	10,332
2007	4	687	11,853	1,448	196	13,497
2008	5	836	15,933	1,899	294	18,126
2009	6	1,076	16,784	1,807	545	19,136
2010	7	1,285	19,395	2,858	195	22,448

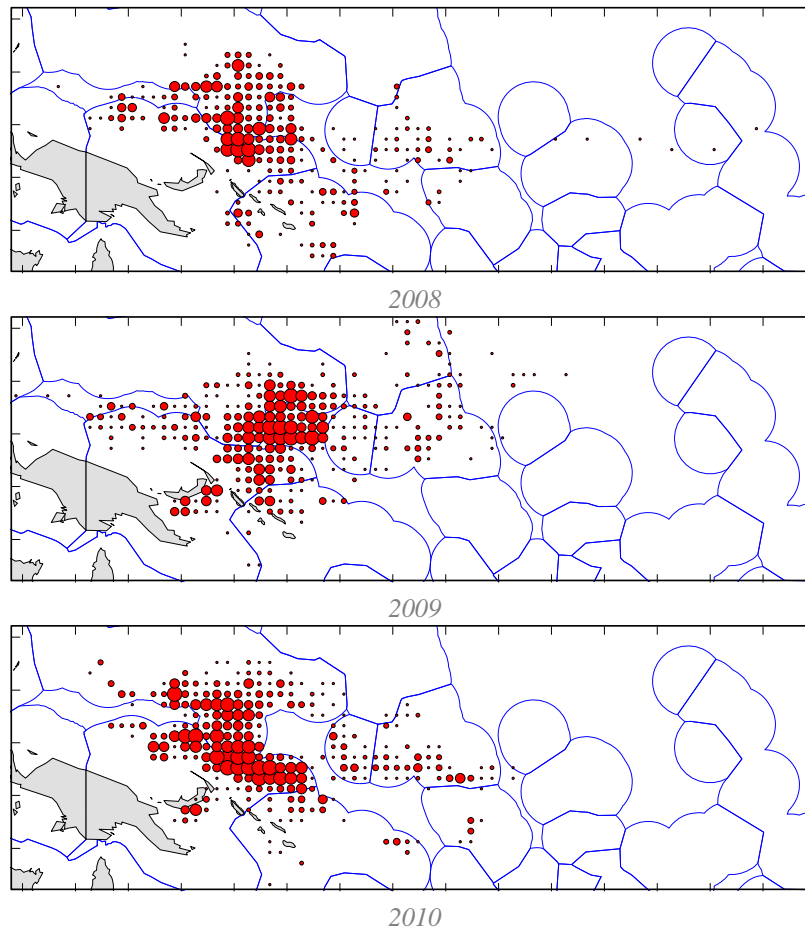


Figure 1. Annual distribution of effort (days fishing and searching) for the FSM purse seine fleet, 2008, 2009 and 2010

1.1.2 FSM longline Catch in the WCPFC Convention Area

The total catch for all species in the WCPFC Convention Area for the FSM flagged longline vessels was reported to be 1,566mt in 2010. Effort data showed all 23 vessels fished actively. There were 18 vessels showing fishing effort within FSM EEZ, while 5 vessels were mainly fishing out in RMI's EEZ for the whole 2010 period. The total catch by the 23 active vessels is comprised of 57% (899mt) bigeye, 13% (406mt) yellowfin, <14% (212mt) of billfish, and shark is reported to be 44mt (not indicated in Table 2). Other species and incidental catches is recorded as 49 mt (not shown in Table 1). Effort by logsheet is showing a higher fishing effort by days compared to 2009 catch and effort.

Effort for the 23 active FSM longline vessels is more pronounced within the eastern-mid section of the EEZ, towards, Pohnpei area, and increases towards the RMI waters for 2010. Most of the FSM flagged longline vessels are iced-operated, and can only stay out for a fishing period of two weeks before returning to port for unloading. This contributes to the reason as to why the effort is more concentrated near shore. Five of the FSM flagged longline vessels are based and operating in RMI waters, accounting for lesser and much dispersed effort shown in RMI waters (figure 2- bottom).

Table 2. Annual catch and effort estimates for the FSM longline fleet, by species in the WCPFC Convention Area, 2006-2010

Year	Vessels	Days	Catch (Metric tonnes)								TOTAL
			ALB	BET	SKJ	YFT	BLM	BUM	MLS	SWO	
2006	7	1101	0	172	0	270	9	27	2	13	493
2007	13	1063	0	1,395	0	548	40	117	10	57	2,167
2008	15	2647	0	970	0	328	5	192	1	20	1,516
2009	25	2404	40	1,395	0	583	24	245	0	26	2,313
2010	23	4008	49	899	0	406	12	185	0	15	1,566

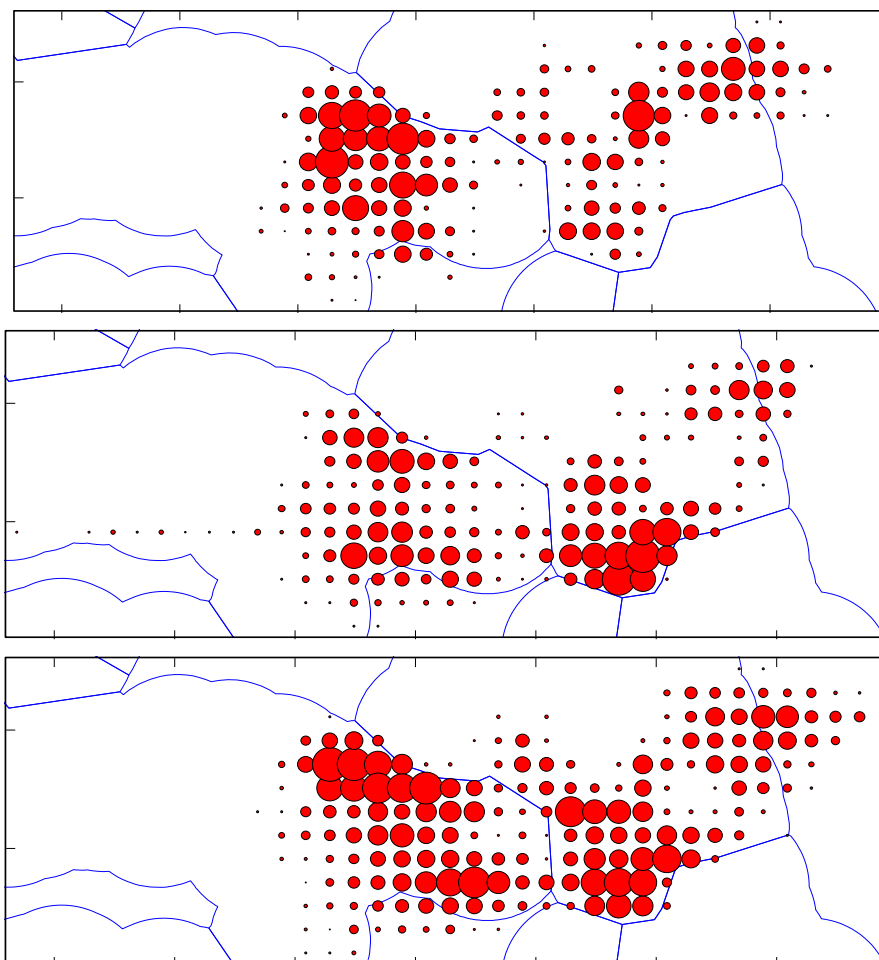


Figure 2. Annual distribution of effort (100s of hooks) for the FSM longline fleet throughout the WCPFC Convention Area for 2008 (top), 2009 (middle) and 2010 (bottom)

1.2 Coastal State Reporting

1.2.1 Fleet Structure

In 2010, a total of 345 longline, pole and line and purse seine fishing vessels were licensed to fish in the FSM EEZ which were predominantly foreign fishing vessels. By gear type, longliners accounted for 135, pole and line 27, and purse seiners 146. Of the 135 longliners, Japan accounted for 43 followed by China of 37, Chinese Taipei with 32, and FSM of 23 vessels. In terms of purse seiners, United States accounted for 37 vessels, Japan of 35, Chinese Taipei of 30, China of 10, and the remaining were vessels under the FSMA. Japan was the only country employing the pole and line gear with 27 licensed in 2010.

Table 3. Annual Number of Foreign Fleet Vessels (by Flag and Gear-type) Licensed to Fish in the FSM EEZ, 2006-2010.

Country	Longline					Pole & Line					Purse Seine				
	2006	2007	2008	2009	2010	2006	2007	2008	2009	2010	2006	2007	2008	2009	2010
Chinese, Taipei	38	27	40	52	32						34	34	38	32	30
South Korea											28	28	30	27	1
United States											13	21	32	37	37
Japan	78	66	58	43	43	26	8	25	27	27	36	35	35	37	35
Peoples Republic of China	8	11	7	8	37						9	10	11	10	10
Vanuatu											8	14	15	3	3
Papua New Guinea											4	10		1	21
Tuvalu													-		1
Kiribati											1	1			
FSM	24	29	21	21	23						5	4	5	6	7
Rep. of Marshall Islands											2	4	5		4
New Zealand													-		0
Philippines	1												-	1	2
FSMA													-	25	30
Solomon											2				0
Total	149	133	126	124	135	26	8	25	27	27	143	162	171	179	146

1.2.2 Catch in FSM EEZ

The 2010 catch by the tuna fishery in the FSM EEZ by logsheets is estimated to be 155,753mt, an increase in catch by all gear types within the FSM waters. Purse seine accounted for 150,122mt followed by longliners 2,831mt with 2,800mt catch by the pole and line vessels. Total EEZ catch in 2010 shows a slight increase of total EEZ catches over the last two years by all gear types. The 2010 increased total EEZ catch is primarily due to a significant increasing of fishing effort amongst the purse seine fleets as well as the longliners for this period, compared to the last two years.

Figure 3. Trend of Catch by all gear-types in FSM Waters, 1995-2010

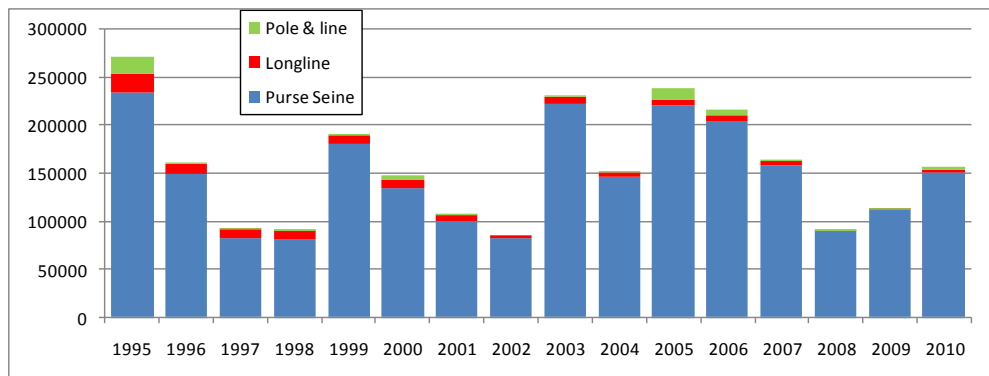


Table 4. Annual Catch Records for all Gear-types within FSM EEZ, 1995-2010

Year	Catch (Metric tonnes)			
	Purse Seine	Longline	Pole & line	Total
1995	233,232	18,699	18,147	270,077
1996	147,393	11,138	1,054	159,585
1997	81,118	9,742	1,003	91,863
1998	79,924	9,632	1,026	90,582
1999	178,475	10,134	555	189,165
2000	132,939	9,769	3,845	146,553
2001	99,531	6,592	689	106,812
2002	81,156	3,651	0	84,807
2003	220,476	7,053	2,577	230,106
2004	144,677	5,062	1,405	151,144
2005	218,956	6,344	11,086	236,386
2006	202,714	6,545	6,023	215,281
2007	156,290	5,447	572	162,309
2008	88,080	1,787	5	89,872
2009	110,332	2,184	92	112,608
2010	150,122	2,831	2,800	155,753

1.2.3 Purse Seine Catch in FSM Waters

The 2010 total catch by purse seine gear type within the FSM EEZ is recorded as 155,753mt. The purse seine total catch has increased over the last two years (2008-2009) catches. Over the last decade, the purse seine total catch within the EEZ has fluctuated between 50,000 to 200,000mt with an overall average of 139,000mt annually over the past 13 years.

In terms of fishing effort, the vessel under the FSM Arrangement vessels fished the same fishing effort shown by the Japan fleet, with the most effort (by fishing days) followed by Chinese Taipei and United States, although records indicated the higher volume of catch by the US purse seiners over Chinese Taipei (Table 5). In Figure 4 displays the three main purse seine fleets and their areas of concentrated fishing days within the EEZ in 2010, except the FSMA vessels. All the three main purse seine fleets were fishing within the lower and south-east part of FSM waters.

Table 5. Historical Annual catches by major purse seine fleets in the FSM EEZ, by flag and species, 2006-2010.

Fleet	Year	Days	Catch (Metric tonnes)			
			BET	SKJ	YFT	TOTAL
China	2006	710	45	11,943	1,338	13,326
	2007	769	238	12,235	1,653	14,125
	2008	298	221	5,265	1,638	7,124
	2009	702	167	11,413	868	12,449
	2010	386	187	4,263	1,041	5,491
FSM Arrangement	2006	1,259	493	32,791	4,001	37,286
	2007	1,118	335	27,405	3,164	30,904
	2008	762	430	15,479	3,059	18,967
	2009	815	275	16,316	1,558	18,149
	2010	1,382	562	28,625	3,771	32,957
Japan	2006	1,711	918	58,138	6,982	66,037
	2007	1,334	675	35,834	3,516	40,025
	2008	307	1,493	10,388	2,255	14,136
	2009	748	401	21,055	4,084	25,540
	2010	1,382	233	41,351	3,554	45,138
Korea	2006	1,011	395	28,064	3,572	32,032
	2007	545	58	9,794	880	10,732
	2008	324	86	3,058	2,336	5,480
	2009	180	73	3,382	830	4,285
	2010	603	120	12,194	928	13,243
USA	2006	24	4	119	9	132
	2007	139	64	2,607	592	3,262
	2008	396	143	7,265	2,686	10,095
	2009	648	402	18,435	1,568	20,405
	2010	903	364	22,236	1,267	23,867
Chinese Taipei	2006	1,840	167	48,260	3,168	51,594
	2007	2,061	434	48,962	4,223	53,619
	2008	1,165	486	23,212	5,480	29,178
	2009	1,070	307	25,771	2,326	28,404
	2010	1,287	345	24,808	1,760	26,913
Vanuatu	2006	72	46	2,067	193	2,306
	2007	105	37	3,063	522	3,622
	2008	64	15	2,654	431	3,099
	2009	33	12	1,041	47	1,100
	2010	60	0	2,497	15	2,513
Total EEZ	2006	6,628	2,068	181,381	19,264	202,714
	2007	6,072	1,841	139,900	14,549	156,290
	2008	3,316	2,874	67,321	17,885	88,080
	2009	4,195	1,637	97,413	11,282	110,332
	2010	6,004	1,811	135,495	12,336	150,122

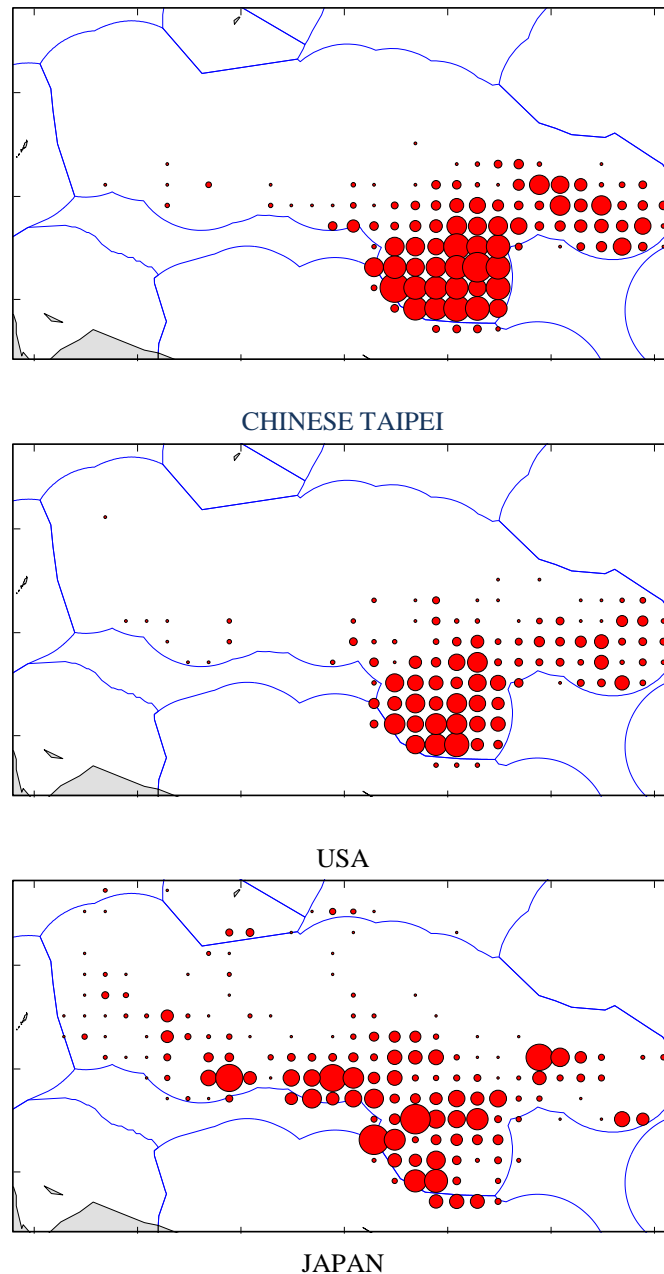


Figure 4. Annual distribution of effort by the main foreign purse seine fleets active in the FSM EEZ, 2010

1.2.4 Longline Catch in FSM Waters

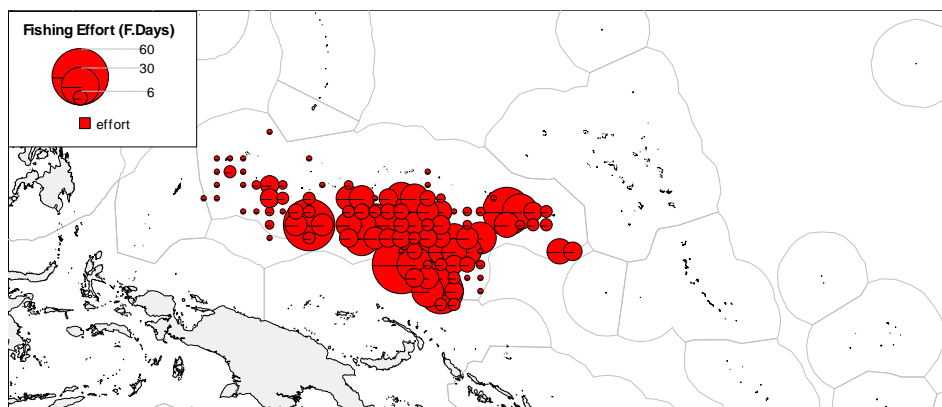
The total longline catch targeting yellowfin and bigeye tuna in the FSM EEZ by the four fleets was 2,831mt. Catch by flag, Japan accounted for 22% (1,174mt) of the total catch while the Pohnpei based Chinese longline fleet accounted for 17% (247mt). The catch of the domestic based- Chinese Taipei longliners also declined accounting for 17% (696mt) while FSM accounted for 44% or 715mt (Table 6). In contrast, the Japan-Guam based longline vessels had the most catch in zone, followed by FSM, Chinese Taipei and China. Fishing effort by days is not included in [table 6](#), due to difficulties with the TUFMAN, but rather expressed in the maps for each of the longline fleets operational in FSM's EEZ for the period of 2010. The current catch for the FSM longline fleet seems to be showing a much lesser catch in zone than what it should be; compared with the unloading records, assuming that logsheet data is provisional this stage for the year 2010.

TUFMAN record is indicating most of the fishing effort by Japan Guam-based longline fleet, scattered effort within the lower mid and eastern section of the FSM waters. The Chinese Taipei operating out of Pohnpei, FSM is indicating the most effort spent in the lower-eastern part of the EEZ, towards Kapingamarangi area, whereas the China fleet is focused towards the very eastern area of the EEZ (Figure 5).

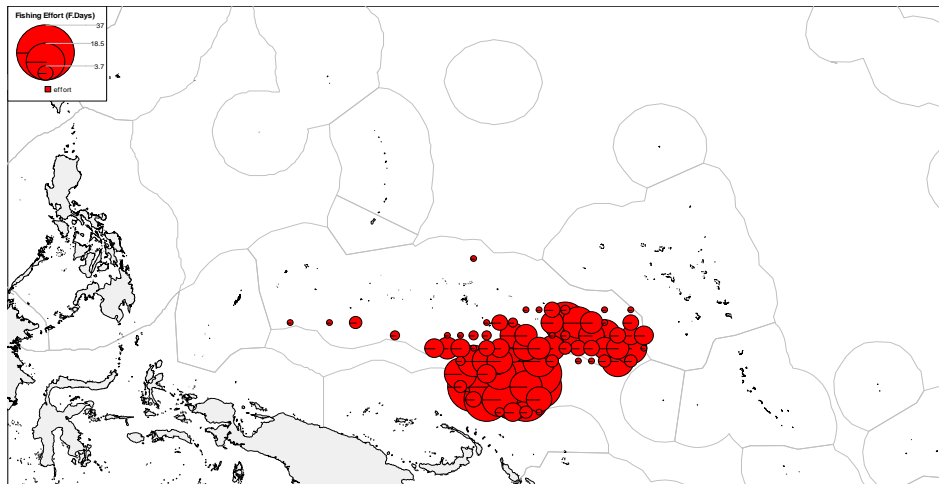
Table 6. Estimated Annual tuna catches by longline fleets in the FSM EEZ, by flag and species, 2006-2010.

Fleet	Year	Catch (Metric tonnes)		
		YFT	BET	Total
China	2006	68	373	441
China	2007	310	922	1,232
China	2008	73	254	327
China	2009	96	227	323
China	2010	72	175	247
FSM	2006	21	22	44
FSM	2007	93	188	281
FSM	2008	183	535	718
FSM	2009	235	481	716
FSM	2010	274	441	715
Japan	2006	2,501	2,734	5,235
Japan	2007	1,378	1,883	3,261
Japan	2008	160	380	540
Japan	2009	346	347	693
Japan	2010	543	630	1,174
Taiwan	2006	210	378	588
Taiwan	2007	187	440	627
Taiwan	2008	29	145	174
Taiwan	2009	158	269	428
Taiwan	2010	320	376	696
Total				
EEZ	2006	2,801	3,507	6308
	2007	1,967	3,433	5401
	2008	445	1,314	1759
	2009	835	1,325	2160
	2010	1,146	1622	2831

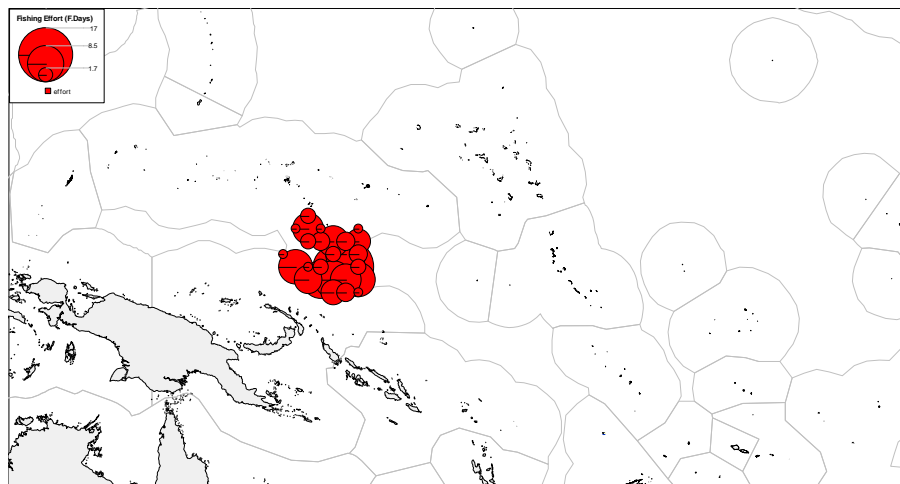
Figure 5. Annual distribution of effort by the main foreign longline fleets active in the FSM EEZ for 2010



Japan Longline Fleet fishing effort (by days) in2010



Chinese Taipei Longline fishing effort (fishing days) in 2010



China longline fishing effort (by fishing days) in 2010.

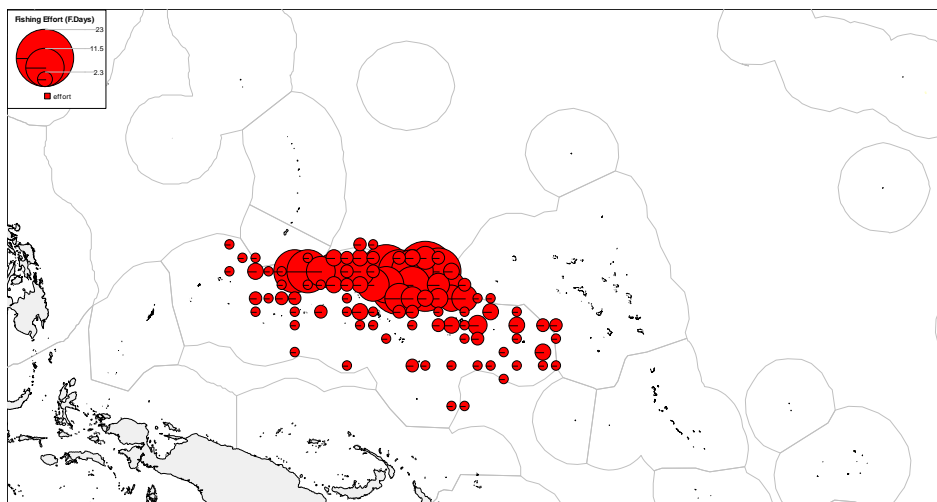
1.2.5 Pole and Line Catch in the FSM Waters

Pole and line catch within the FSM' EEZ for 2010 is indicating a total of 2,800mt of tuna species. Current catch record in Table 7 is showing the break-down of the three target species, (BET 0mt YFT 4mt, and SKJ 2,795mt). 2010 Pole and Line catch in FSM's EEZ is showing increase of catch and effort over the last four years. The pole and line fishing effort is mainly focused in the upper mid section of the FSM' EEZ for the year, 2010.

Table 7. Annual catches by foreign pole-and-line fleets in the FSM EEZ, by flag and species, 2006-2010

Fleet	Year	Days	Vessels	Catch (Metric tonnes)				TOTAL
				BET	SKJ	YFT	OTH	
Japan	2006	694	27	0	6,013	10	1	6,024
	2007	108	7	1	569	3	0	572
	2008	7	5	0	5	0	0	5
	2009	57	10	0	89	3	0	92
	2010	345	25	0	2,795	4	0	2,800

Figure 6. Japan Pole and Line Catch and Effort, 2010



2 Research and Statistics

2.1 The FSM Fisheries Observer Program

The FSM's National Fisheries Observer Program (NFOP) has been operating since the Authority began in 1979. With the expansion and diversification of the fleets in the FSM, NFOP was expanded to a maximum pool of 12 personnel. Since 1995, NFOP has been operating with 10-12 observers under contractual services. In early 2009, the FSM's NFOP recruited over 40 observers after hosting two Regional Observer Trainings with the assistance from SPC and FFA, to a pool of 52 observers, and recently hosted another regional training, in early 2010, employing a total of 74 fisheries observers in 2010.

The FSM NFOP was reviewed and finally authorized by the WCPFC ROP in early May, 2009 and has continued to provide observers, contributing to the FAD Closure periods, and the 3rd Implementing Agreement by the WCPFC for 100% observer coverage and 100% catch retention measures.

The NORMA FOP achieved 385 observed trips for a total of 12,722 sea-days covering longline, pole and line, and purse seine vessels. The observer placement coverage on longline gear for 2010 is indicating 0.2%, very poor and 100% on the purse seine gear (Table 8). Observer coverage for most of the purse seine fleet is indicating 100% (table 8) as the fishing days within the FSM EEZ is less than the observed seadays by the observers for each of the fleets. However this need to be viewed cautiously as some observer trips may have occurred outside the FSM's waters, in other country's EEZs.

Table 8. Observer Trip Coverage per Flag and Gear-type, 2010

Gear	Flag	Obsvd.Seadays	EEZ F. Days	Coverage%
Longline				
Trips- 0	China	0	~1548	0%
0	FSM	0	~2736	0%
1	Chinese Taipei	4	~1446	0.2%
0	Japan	0	~1542	0%
Purse Seine				
Trips- 27	China	1104	386	100%
24	FSM +(FSMA)	775	1382	56%
116	Japan	3724	1382	100%
27	Korea	675	603	100%
108	Chinese Taipei	3629	1287	100%
69	RMI	2077	*	100%
10	USA	311	903	34%
Pole and Line				
Trips- 3	Japan- 3	423	345	100%
Longline	Total 1	4	7272	0.05%
Purse Seine	Total 381	12295	6801	100%
Grand Total	385	12722	14,418	54%

The 2010 coverage for the FSM National Observer Program has increased 100% on the purse seine and decreased drastically on the longline gear type. The observer program was principally focused on providing observers to four countries, who continuously sought assistance for provision of observers to their purse seine vessels during the 100% Observer Coverage period; Japan, Chinese Taipei, Republic of the Marshall Islands, and the FSMA fleet. The 3rd Implementing Agreement; 100% Observer Coverage requirement shifted all placement of observers by the FSM NFOP to purse seine gear type, thus only 1 longline placement was made for the entire 2010 period.

FSM and RMI continued with an agreement for a reciprocal placements of observers on their vessels, basically to allow RMI vessels to be covered by FSM national observers and visa versa. The Reciprocal Arrangement was successfully carried out by both parties to obtain 100% coverage for both countries, FSM and RMI.

2.2 The FSM Port Sampling Program

The National Oceanic Resources Management Authority (NORMA) continues to coordinate its port sampling program and monitor the continuous unloading and transshipment activities within FSM ports. In addition, NORMA continues to use its observer program to assist in conducting port sampling activities within its active port of transshipments and unloading. There has been no reported transshipment /unloading activities from the other FSM unloading ports over the last four years, but rather concentrated in one port, Pohnpei. NORMA's current record is showing a sampling coverage for purse seine transshipments at 81%, while longline sampling coverage is indicating a much higher coverage of 97%.

FSM is also assisting the United States in collection of port sampling data for the US purse seine vessels that transhipped in FSM ports. The US provided some in-country support and training to the port sampling program in collection and port sampling data from the UST vessels transshipping in FSM ports.

2.3 Purse Seine Transshipment in FSM

The 2010 purse seine unloading volume is indicating 146,220mt of tuna from 166 vessels. This is 14,744mt more than the total unloaded volume reported for 2009 for FSM. The unloading total of 2010 is still provisional at this stage as the purse seine unloading total is yet to be completed. Pohnpei port has remained the only active purse seine port of transshipments during the last five years and the only active port of Purse Seine unloading. Tables 9 and 10 present summaries of the purse seine transshipment activities in FSM for years 2009 and 2010 by total volume and flag. The majority of the vessels were Chinese Taipei (TW) flagged (79 boats) that transshipped 39% of the FSM total transshipment volume (146,220mt). There were 19 China flagged purse seine vessels that transshipped approximately 9%. There were 4 US vessels, and 22 Vanuatu registered and other FSMA vessels that unloaded a volume of 17,120, combined for (12%). The FSM flagged vessel unloaded approximately <6%, and the Korean vessels for only 19%. This report notes that the 2010 total unloaded volume and number of unloading reported in FSM port is still an under estimate as data is still provisional at this stage.

Table 9. Purse Seine Transshipment Activities in FSM, 2009.

Port	Flag	Records in MT				Unloading
		SKJ	YFT	Mixed	Total	
Pohnpei	CN	14120		280	14,400	20
	KI	690			690	1
	KR	4,600		200	4,800	6
	TW	66,100		1,540	67,640	89
	FM	8,631		9	8,640	12
	VU	9,600			9,600	15
TOTAL		103,741		2,029	131,476	143

Source: NORMA Records

Table 10. Purse Seine Transshipment Activities in FSM, 2010.

Port	Flag	Records in MT				Unloading
		SKJ	YFT	Mixed	Total	
Pohnpei	CN	12,964	6	140	13,110	19
	US	2679	-	761	3,440	4
	KR	28,343	5	2	28,350	35
	TW	55,442	-	1,438	56,880	79
	JP	21,952	-	448	22,400	
	FM	8152	-	208	8,360	11
	VU&FSMA	12,844	12	824	13,680	18
TOTAL		142,376	23	3821	146,220	166

Source: NORMA Records

2.4 Longline Unloading in FSM

The current 2010 unloading record is showing a total of 1,981 of tuna and other species by the three longline fleets (Table 12). There were 486 number of unloading reported for the year by FSM of 59%, China of 14% and Chinese Taipei of 20%. The unloaded total (486mt) for 2010 is slightly less by 25% (360mt) of the 2009's unloaded total (645mt).

The 2010 unloading records by TUFFMAN showed a total of 486 longline vessels, unloading a total volume of 1,981mt (43 % BET, 24% YFT, and 33% other species). Majority of the unloaded total was by the FSM flagged longline vessels. (Table 11-2009 unloading record and Table 12-2010 unloading records).

The unloaded total for the domestic based longline fleets of FSM, China, and Chinese Taipei for 2010 does not match up with the total catch in zone. The unloaded total for longline is indicating higher figures in volume of catches unloaded than shown in catch records for all the three fleets that fish and unload in FSM. This could mean that logsheet data for 2010 is still provisional.

Table 11. Longline Unloading in FSM, 2009

Port	Year	Flag	Species	Mt	Unloading
POHNPEI	2009	CN			
		CN	BET	268	99
		CN	YFT	90	
		CN	OTH	68	
		TW	BET	581	201
		TW	YFT	250	
		TW	OTH	519	
		FM	BET	960	345
		FM	YFT	379	
		FM	OTH	323	
Total				3,438	645

Source: NORMA Records

Table 12. Longline Unloading in FSM, 2010

Port	Year	Flag	Species	Mt	Unloading
POHNPEI	2010	CN			
		CN	BET	170	70
		CN	YFT	66	
		CN	OTH	50	
		TW	BET	193	98
		TW	YFT	155	
		TW	OTH	432	
		FM	BET	497	285
		FM	YFT	251	
		FM	OTH	167	
Total				1,981	486

Source: NORMA Records