



**SCIENTIFIC COMMITTEE
SEVENTH REGULAR SESSION**

9-17 August 2011
Pohnpei, Federated States of Micronesia

ESTIMATES OF ANNUAL CATCHES IN THE WCPFC STATISTICAL AREA

WCPFC-SC7-2011/ST IP-1

Paper prepared by

Oceanic Fisheries Programme (OFP)
Secretariat of the Pacific Community (SPC)
Noumea, New Caledonia

REVISED AS AT 20th SEPTEMBER 2011
(updated to incorporate annual catch estimates from SC7 National Fisheries Reports)

Introduction

Estimates of annual catches in the WCPFC Statistical Area (Figure 1) are presented for target tuna species, i.e., albacore (*Thunnus alalunga*) bigeye (*Thunnus obesus*), skipjack (*Katsuwonus pelamis*) and yellowfin (*Thunnus albacares*), and major billfish species, i.e., black marlin (*Makaira indica*), blue marlin (*Makaira mazara*), striped marlin (*Tetrapturus audax*) and swordfish (*Xiphias gladius*). Estimates of catches of southern bluefin tuna (*Thunnus maccoyii*) are compiled by the Commission for the Conservation of Southern Bluefin Tuna (CCSBT). The compilation of estimates of catches of Pacific bluefin tuna (*Thunnus orientalis*) commenced only recently and will be presented in future editions of this report once the gaps in the provision of historical catch estimates for this species have been resolved. Recent annual catches of tuna in the domestic fisheries of Vietnam may have amounted to about 19,000 tonnes of skipjack, 18,000 tonnes of yellowfin and 5,500 tonnes of bigeye, for a total of 42,500 tonnes (Lewis 2005). This year, Vietnam compiled and provided an annual catch estimate for their longline fishery for 2010, and will endeavour to compile historical estimates in the coming years. Since there is a catch estimate for only one year covering the Vietnamese fisheries at this stage, their 2010 longline catch estimate has been ignored in the tables and figures presented below.

Target Tuna Species

Tables 1–7 and Figures 2 and 3 present estimates of annual catches of target tunas in the WCPFC Statistical Area. For a breakdown of recent catch estimates by gear and flag, see OFP (2010). For discussion regarding trends, see Williams & Terawasi (2011). Estimates of purse-seine catches of bigeye and yellowfin that were not already adjusted for the misidentification of bigeye as yellowfin have been adjusted by the OFP (Lawson 2007).

Recent studies using observer data (e.g. Lawson, 2007, Lawson, 2010, Hampton and Williams, 2011) show that the logsheet-reported catch, mainly for associated sets, should contain higher quantities of yellowfin and bigeye tuna that have been misreported as skipjack tuna. Purse seine catch estimates that have been adjusted with species compositions determined from observer grab samples corrected for size selectivity bias (see Lawson 2010) are presented in Table 6. However, all composite tables and figures referring to species have used the Table 5 estimates of purse-seine catches of skipjack, yellowfin and bigeye tuna, and not the Table 6 estimates.

Tables 8–11 present estimates of annual catches of target tunas in the WCPO Area and the EPO Area (Figure 1) by gear type. Tables 12–14 present estimates of annual catches of target tunas for the WCPO, the EPO and the Pacific Ocean by species. Table 15 and 16, and Figures 4 and 5, present global catches of target tunas, by species and ocean area respectively.

Tuna Discards

Observer data have been used to determine the discard rates for albacore, bigeye and yellowfin and bigeye caught by longliners (Table 17) and skipjack, yellowfin and bigeye caught by purse seiners (Table 18).

Tuna discards by longliners in the WCPFC Statistical Area during 1994–2010 were estimated by applying discard rates by flag and year, determined from observer data, to tuna species catch estimates, by flag and year, and then summing the tuna discards (by species) across all flags. Discard rates for flag/year combinations where there were insufficient data (defined as (i) less than 10 observer trips or (ii) less than 500 fish samples available), were substituted with discard rates determined for year (with all flags combined). The total discard rate for the three target tuna species caught by longliners during the period was 2.5%.

Tuna discards by purse seiners in the WCPFC Statistical Area during 1995–2010 were estimated by applying discard rates by flag, year and school association (unassociated and associated), determined from observer data, to tuna species catch estimates, by flag, year and school association, and then summing the tuna discards (by species) across all flags. Discard rates for flag/year/school association combinations where there were insufficient data (defined as (i) less than 5 observer trips or (ii) less than 1,000 mt of catch observed),

were substituted with discard rates determined for school association (with all years/flags combined) for years prior to 2008, and substituted with discard rates determined for year/school association (with all flags combined) for years since 2008. This method was used since an analysis of variance of discard rates for skipjack, yellowfin and bigeye caught by purse seiners indicated that species, school association and flag, but not year, were significant predictors. However, in recent years, there have been management measures (CMM 2009-02) introduced to restrict the discard of tuna which means that the year effect needs to be considered in the estimation process for recent years. The total discard rate for the three target tuna species caught by purse seiners during the period was 3.2%.

Major Billfish Species

Table 19 presents estimates of commercial catches of the four major billfish species by gear type. Table 20 and Figure 6 present estimates of the major billfish catches for all gear types combined. Tables 21 and 22 present estimates of commercial catches of striped marlin and swordfish in the WCPFC Statistical Area north and south of the equator respectively. Table 23 present estimates of commercial catches of albacore, striped marlin and swordfish in the Pacific Ocean, south of the equator.

REFERENCES

- Hampton J. & P.G. Williams 2011. Misreporting of purse seine catches of skipjack and yellowfin-bigeye on logsheets. Working Paper ST-WP-2. Seventh Regular Session of the Scientific Committee of the WCPFC. Pohnpei, FSM. 9th–17th August 2011.
- Lawson, T.A. 2007. Further analysis of the proportion of bigeye in ‘yellowfin plus bigeye’ caught by purse seiners in the WCPFC Statistical Area. Information Paper ST-IP-5. Third Regular Session of the WCPFC Scientific Committee, 13–24 August 2006, Honolulu, Hawaii, United States of America. Oceanic Fisheries Programme, Secretariat of the Pacific Community, Noumea, New Caledonia.
- Lawson, T.A. 2010 Update on the estimation of selectivity bias based on paired spill and grab samples collected by observers on purse seiners in the Western and Central Pacific Ocean. Working Paper ST-WP-2. Sixth Regular Session of the Scientific Committee of the WCPFC. Nuku’alofa, Tonga. 10–19 August 2010..
- Lewis, A.D. 2005. The Tuna Fisheries of Vietnam — An Overview of Available Information. Information Paper ST-IP-5. First Regular Session of the Scientific Committee of the Western and Central Pacific Fisheries Commission, 8–19 August 2005, Noumea, New Caledonia. Oceanic Fisheries Programme, Secretariat of the Pacific Community, Noumea, New Caledonia.
- OFP. 2010. WCPFC Tuna Fishery Yearbook, 2009. Western and Central Pacific Fisheries Commission, Pohnpei, Federated States of Micronesia.
- Williams, P. & P. Terawasi. 2011. Overview of tuna fisheries in the Western and Central Pacific Ocean, Including Economic Conditions – 2010. Working Paper GN-WP-1. Seventh Regular Session of the WCPFC Scientific Committee, 9–17 August 2011, Pohnpei, FSM. Oceanic Fisheries Programme, Secretariat of the Pacific Community, Noumea, New Caledonia and Pacific Islands Forum Fisheries Agency, Honiara, Solomon Islands.

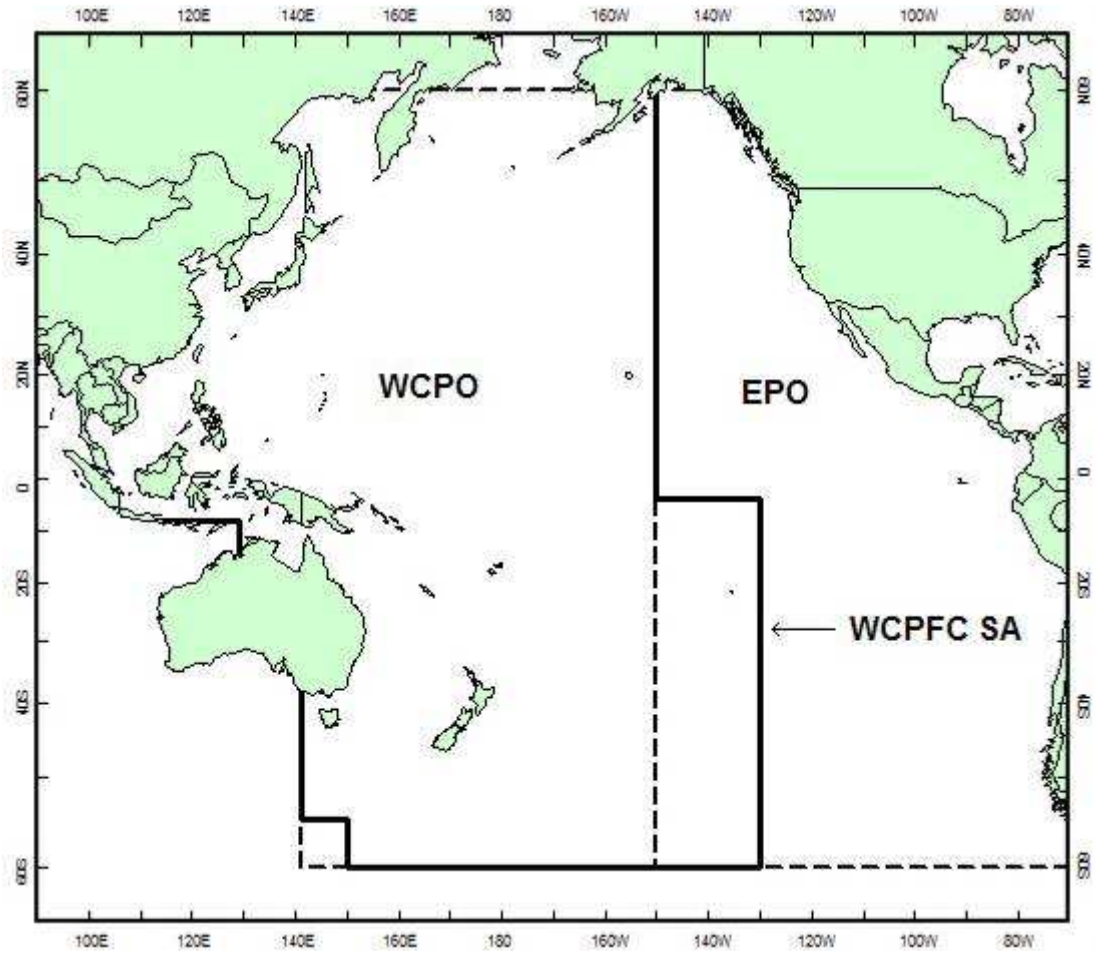


Figure 1. WCPFC Statistical Area (WCPFC SA), the Western and Central Pacific Ocean (WCPO) Area and the Eastern Pacific Ocean (EPO) Area

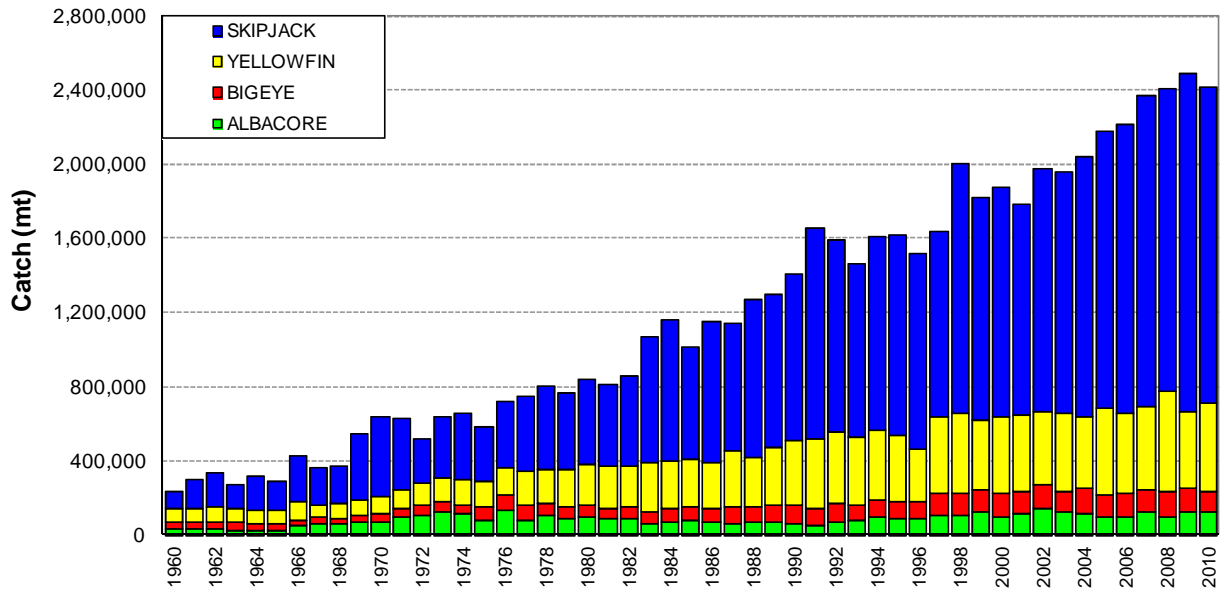


Figure 2. Catches of tuna in the WCPFC Statistical Area, by species

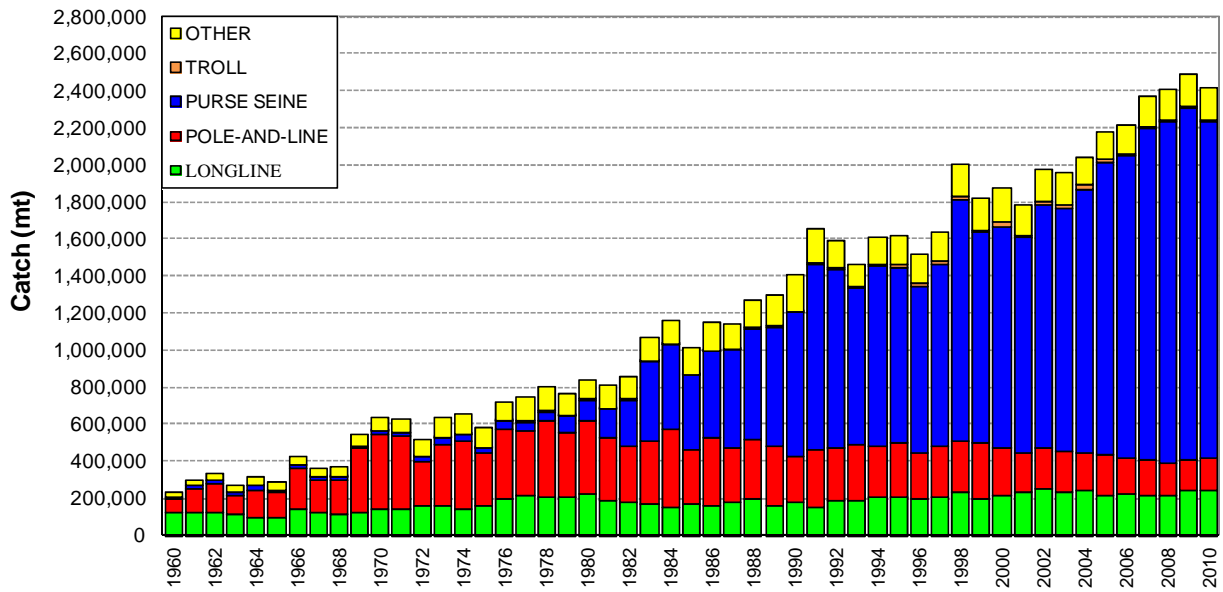


Figure 3. Catches of tuna in the WCPFC Statistical Area, by gear type

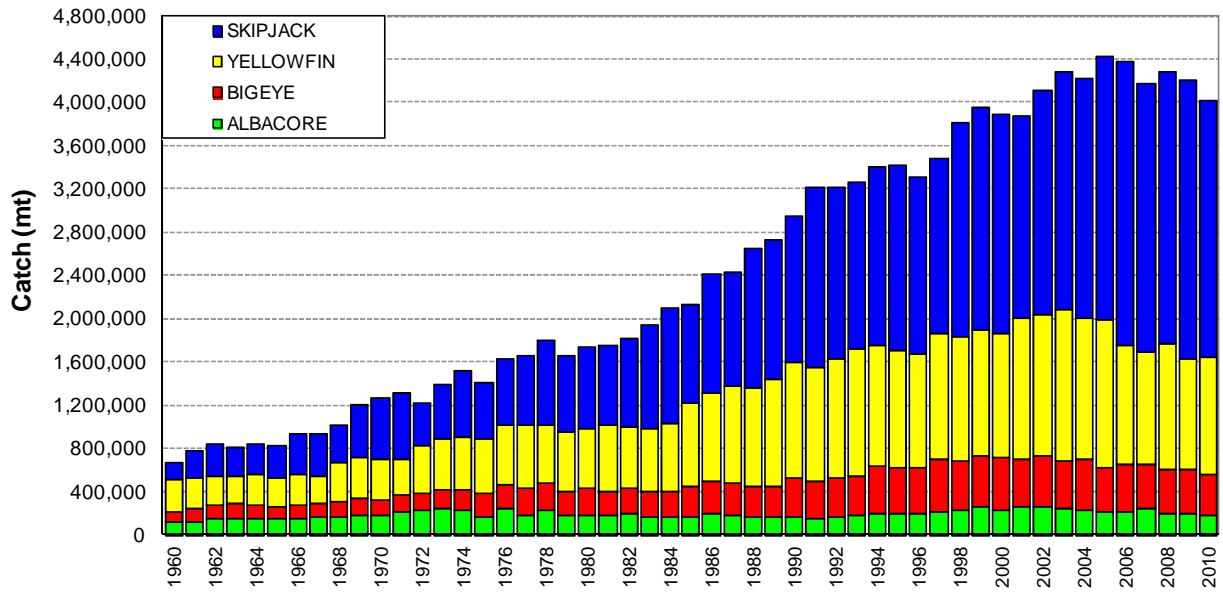


Figure 4. Global catches of tuna, by species

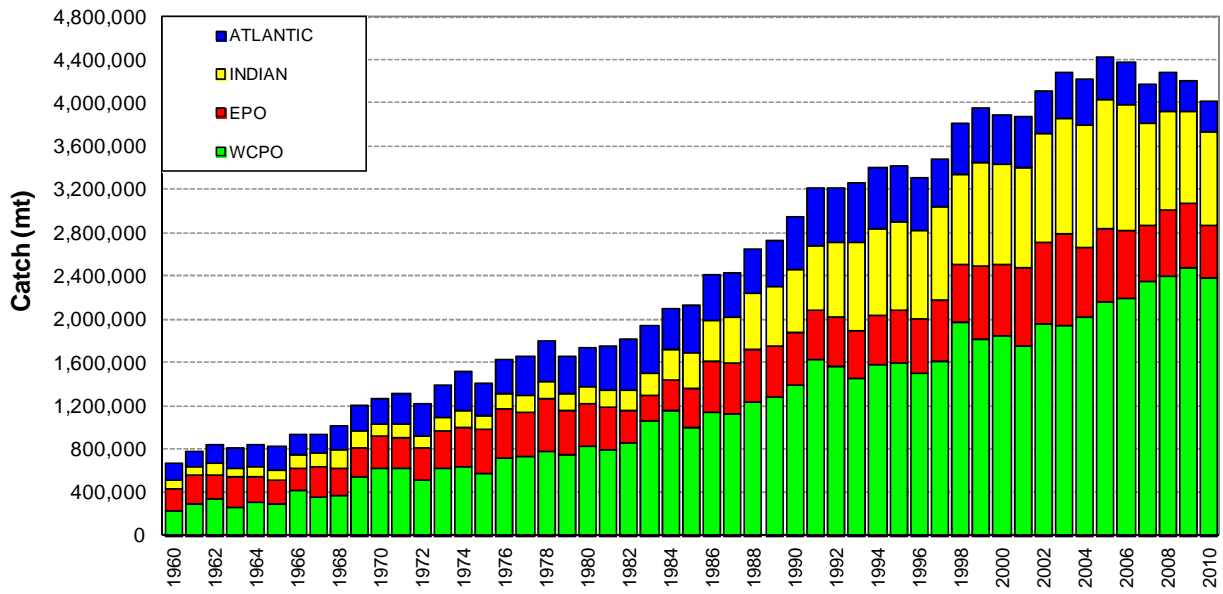


Figure 5. Global catches of tuna, by ocean area

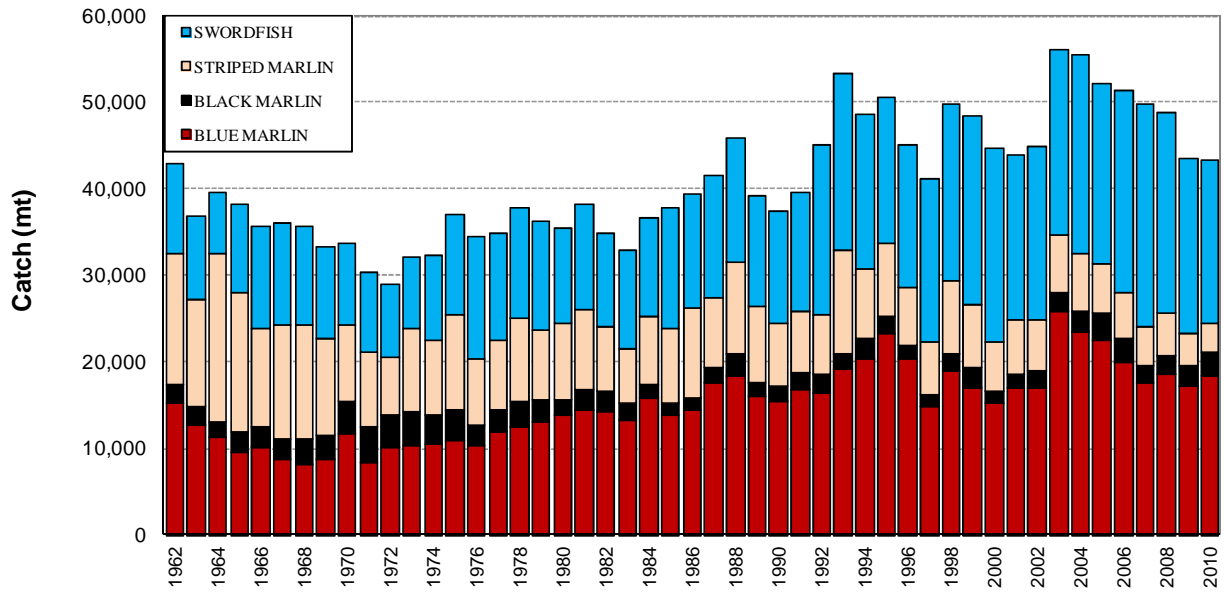


Figure 6. Commercial catches of major billfish species in the WCPFC Statistical Area

Table 1. Catches of target tunas in the WCPFC Statistical Area, by species

YEAR	ALBACORE		BIGEYE		SKIPJACK		YELLOWFIN		TOTAL
	TONNES	%	TONNES	%	TONNES	%	TONNES	%	
1960	31,463	13	45,025	19	89,938	37	73,667	31	240,093
1961	32,922	11	39,380	13	156,736	51	75,438	25	304,476
1962	37,602	11	36,868	11	181,624	53	83,944	25	340,038
1963	26,815	10	44,346	16	122,703	46	75,756	28	269,620
1964	26,687	8	32,391	10	182,918	58	74,154	23	316,150
1965	28,735	10	31,333	11	155,221	54	73,635	25	288,924
1966	52,284	12	33,187	8	249,514	58	93,099	22	428,084
1967	58,822	16	36,748	10	204,831	55	68,939	19	369,340
1968	64,213	17	30,416	8	194,978	52	81,967	22	371,574
1969	72,106	13	34,356	6	351,052	64	87,262	16	544,776
1970	74,350	12	40,082	6	423,431	66	99,156	16	637,019
1971	100,737	16	43,223	7	380,957	60	105,058	17	629,975
1972	109,655	21	57,164	11	237,818	46	116,148	22	520,785
1973	131,149	21	48,966	8	328,784	52	128,375	20	637,274
1974	115,162	18	52,800	8	356,484	54	131,269	20	655,715
1975	84,651	15	69,088	12	288,788	49	141,185	24	583,712
1976	132,947	18	82,183	11	358,389	49	152,498	21	726,017
1977	83,171	11	82,622	11	405,040	54	183,272	24	754,105
1978	111,161	14	64,956	8	452,387	56	175,847	22	804,351
1979	86,007	11	72,890	9	414,303	54	198,420	26	771,620
1980	95,156	11	70,437	8	459,608	55	215,650	26	840,851
1981	88,095	11	57,605	7	438,261	54	227,479	28	811,440
1982	89,496	10	61,983	7	490,244	57	222,038	26	863,761
1983	65,988	6	63,754	6	683,685	64	259,685	24	1,073,112
1984	74,540	6	70,140	6	762,093	65	259,092	22	1,165,865
1985	77,060	8	74,881	7	603,632	59	261,843	26	1,017,416
1986	71,757	6	72,840	6	755,407	66	253,128	22	1,153,132
1987	63,645	6	87,954	8	687,889	60	306,333	27	1,145,821
1988	67,948	5	86,034	7	849,161	67	267,706	21	1,270,849
1989	73,533	6	87,380	7	823,473	63	317,251	24	1,301,637
1990	63,872	5	99,094	7	901,487	64	345,411	24	1,409,864
1991	58,322	4	83,456	5	1,140,246	69	377,069	23	1,659,093
1992	74,452	5	100,333	6	1,040,181	65	379,994	24	1,594,960
1993	77,496	5	85,725	6	937,326	64	369,756	25	1,470,303
1994	96,461	6	97,793	6	1,043,717	65	376,343	23	1,614,314
1995	91,750	6	89,238	6	1,077,529	67	358,905	22	1,617,422
1996	91,140	6	88,434	6	1,054,198	69	290,749	19	1,524,521
1997	112,900	7	117,758	7	991,048	61	414,626	25	1,636,332
1998	112,465	6	118,599	6	1,341,402	67	429,874	21	2,002,340
1999	131,066	7	118,404	6	1,208,507	66	368,486	20	1,826,463
2000	101,161	5	124,493	7	1,243,839	66	411,549	22	1,881,042
2001	121,550	7	116,683	7	1,139,086	64	410,903	23	1,788,222
2002	147,782	7	130,348	7	1,315,587	66	387,557	20	1,981,274
2003	122,938	6	118,184	6	1,304,290	66	420,076	21	1,965,488
2004	121,266	6	135,620	7	1,401,176	69	385,916	19	2,043,978
2005	101,170	5	121,774	6	1,489,319	68	467,674	21	2,179,937
2006	102,796	5	129,193	6	1,562,111	70	422,846	19	2,216,946
2007	126,606	5	121,159	5	1,674,865	71	450,107	19	2,372,737
2008	101,006	4	136,584	6	1,635,805	68	540,049	22	2,413,444
2009	128,673	5	124,995	5	1,821,878	73	417,240	17	2,492,786
2010	126,017	5	113,864	5	1,705,049	70	476,181	20	2,421,111

Table 2. Catches of target tunas in the WCPFC Statistical Area, by gear type

YEAR	LONGLINE		POLE-AND-LINE		PURSE SEINE		TROLL		OTHER		TOTAL
	TONNES	%	TONNES	%	TONNES	%	TONNES	%	TONNES	%	
1960	129,874	54	73,800	31	5,224	2	0	0	31,195	13	240,093
1961	123,330	41	132,070	43	14,540	5	0	0	34,536	11	304,476
1962	128,804	38	157,412	46	18,875	6	0	0	34,947	10	340,038
1963	122,263	45	98,628	37	11,934	4	0	0	36,795	14	269,620
1964	102,481	32	143,323	45	29,012	9	0	0	41,334	13	316,150
1965	103,955	36	134,621	47	8,621	3	0	0	41,727	14	288,924
1966	145,278	34	218,900	51	16,913	4	0	0	46,993	11	428,084
1967	128,047	35	174,774	47	14,508	4	5	0	52,006	14	369,340
1968	120,136	32	183,954	50	15,143	4	14	0	52,327	14	371,574
1969	122,806	23	354,784	65	9,483	2	0	0	57,703	11	544,776
1970	141,360	22	409,754	64	16,222	3	50	0	69,633	11	637,019
1971	143,625	23	392,914	62	24,511	4	0	0	68,925	11	629,975
1972	161,533	31	242,745	47	29,030	6	268	0	87,209	17	520,785
1973	166,399	26	330,841	52	36,269	6	484	0	103,281	16	637,274
1974	145,192	22	370,499	57	29,548	5	898	0	109,578	17	655,715
1975	164,049	28	279,663	48	27,685	5	646	0	111,669	19	583,712
1976	198,013	27	382,627	53	40,770	6	25	0	104,582	14	726,017
1977	218,413	29	345,257	46	53,492	7	621	0	136,322	18	754,105
1978	212,059	26	407,482	51	52,040	6	1,686	0	131,084	16	804,351
1979	211,221	27	344,799	45	90,102	12	814	0	124,684	16	771,620
1980	227,707	27	395,746	47	113,264	13	1,489	0	102,645	12	840,851
1981	188,516	23	343,584	42	153,907	19	2,118	0	123,315	15	811,440
1982	177,765	21	309,802	36	249,233	29	2,552	0	124,409	14	863,761
1983	170,385	16	338,181	32	436,509	41	949	0	127,088	12	1,073,112
1984	157,072	13	422,512	36	456,467	39	3,124	0	126,690	11	1,165,865
1985	172,886	17	293,206	29	403,252	40	3,468	0	144,604	14	1,017,416
1986	163,964	14	368,730	32	464,460	40	2,284	0	153,694	13	1,153,132
1987	180,581	16	297,935	26	531,142	46	2,350	0	133,813	12	1,145,821
1988	200,281	16	324,805	26	592,611	47	4,671	0	148,481	12	1,270,849
1989	164,878	13	317,802	24	646,441	50	8,687	1	163,829	13	1,301,637
1990	181,591	13	250,390	18	773,730	55	7,219	1	196,934	14	1,409,864
1991	154,805	9	314,979	19	993,149	60	8,004	0	188,156	11	1,659,093
1992	192,364	12	282,598	18	966,314	61	6,844	0	146,840	9	1,594,960
1993	187,553	13	307,966	21	845,646	58	4,612	0	124,526	8	1,470,303
1994	211,638	13	271,071	17	977,650	61	7,493	0	146,462	9	1,614,314
1995	207,042	13	297,106	18	939,173	58	23,585	1	150,516	9	1,617,422
1996	197,234	13	251,053	16	897,905	59	17,807	1	160,522	11	1,524,521
1997	213,450	13	273,844	17	981,360	60	18,732	1	148,946	9	1,636,332
1998	233,645	12	282,965	14	1,296,103	65	19,099	1	170,528	9	2,002,340
1999	202,973	11	302,239	17	1,131,140	62	13,476	1	176,635	10	1,826,463
2000	217,465	12	261,937	14	1,191,102	63	25,845	1	184,693	10	1,881,042
2001	236,468	13	207,308	12	1,164,300	65	17,332	1	162,814	9	1,788,222
2002	256,582	13	216,944	11	1,315,807	66	16,129	1	175,812	9	1,981,274
2003	239,841	12	221,676	11	1,309,714	67	19,875	1	174,382	9	1,965,488
2004	248,490	12	203,903	10	1,420,336	69	23,445	1	147,804	7	2,043,978
2005	223,146	10	213,055	10	1,582,422	73	13,293	1	148,021	7	2,179,937
2006	225,573	10	192,178	9	1,637,623	74	10,098	0	151,474	7	2,216,946
2007	215,854	9	198,590	8	1,781,997	75	9,249	0	167,047	7	2,372,737
2008	214,772	9	178,611	7	1,839,716	76	11,740	0	168,605	7	2,413,444
2009	242,069	10	165,176	7	1,902,191	76	9,894	0	173,456	7	2,492,786
2010	248,589	10	171,597	7	1,818,253	75	9,988	0	172,684	7	2,421,111

Table 3. LONGLINE catches in the WCPFC Statistical Area, by species

YEAR	ALBACORE		BIGEYE		SKIPJACK		YELLOWFIN		TOTAL
	TONNES	%	TONNES	%	TONNES	%	TONNES	%	
1960	31,387	24	43,467	33	0	0	55,020	42	129,874
1961	32,647	26	37,517	30	0	0	53,166	43	123,330
1962	37,358	29	35,895	28	4	0	55,547	43	128,804
1963	26,538	22	42,540	35	0	0	53,185	44	122,263
1964	26,240	26	30,989	30	5	0	45,247	44	102,481
1965	28,603	28	29,848	29	11	0	45,493	44	103,955
1966	51,588	36	31,984	22	52	0	61,654	42	145,278
1967	58,208	45	33,632	26	124	0	36,083	28	128,047
1968	46,226	38	27,757	23	83	0	46,070	38	120,136
1969	38,478	31	32,571	27	130	0	51,627	42	122,806
1970	48,981	35	34,965	25	1,608	1	55,806	39	141,360
1971	46,025	32	38,359	27	1,475	1	57,766	40	143,625
1972	47,774	30	51,040	32	1,544	1	61,175	38	161,533
1973	59,835	36	42,412	25	1,861	1	62,291	37	166,399
1974	39,299	27	45,653	31	2,124	1	58,116	40	145,192
1975	31,180	19	61,488	37	1,919	1	69,462	42	164,049
1976	45,022	23	73,325	37	2,096	1	77,570	39	198,013
1977	48,789	22	72,083	33	3,127	1	94,414	43	218,413
1978	42,260	20	56,237	27	3,233	2	110,329	52	212,059
1979	36,295	17	63,704	30	2,179	1	109,043	52	211,221
1980	42,343	19	61,857	27	632	0	122,875	54	227,707
1981	47,272	25	45,823	24	756	0	94,665	50	188,516
1982	43,876	25	47,886	27	1,015	1	84,988	48	177,765
1983	36,784	22	45,270	27	2,144	1	86,187	51	170,385
1984	31,277	20	51,889	33	870	1	73,036	46	157,072
1985	38,012	22	57,501	33	1,108	1	76,265	44	172,886
1986	41,702	25	55,804	34	1,439	1	65,019	40	163,964
1987	33,398	18	68,042	38	2,329	1	76,812	43	180,581
1988	41,694	21	67,250	34	1,937	1	89,400	45	200,281
1989	30,147	18	63,316	38	2,507	2	68,908	42	164,878
1990	32,170	18	75,141	41	363	0	73,917	41	181,591
1991	35,459	23	59,237	38	885	1	59,224	38	154,805
1992	45,551	24	73,873	38	432	0	72,508	38	192,364
1993	56,183	30	64,553	34	573	0	66,244	35	187,553
1994	59,629	28	76,851	36	379	0	74,779	35	211,638
1995	60,388	29	65,649	32	598	0	80,407	39	207,042
1996	61,590	31	54,027	27	3,935	2	77,682	39	197,234
1997	72,643	34	65,656	31	4,070	2	71,081	33	213,450
1998	80,042	34	81,123	35	5,030	2	67,450	29	233,645
1999	68,834	34	71,286	35	4,208	2	58,645	29	202,973
2000	69,572	32	70,574	32	4,559	2	72,760	33	217,465
2001	85,011	36	73,938	31	5,059	2	72,460	31	236,468
2002	89,883	35	89,177	35	3,450	1	74,072	29	256,582
2003	78,783	33	78,914	33	3,824	2	78,320	33	239,841
2004	75,825	31	91,051	37	4,051	2	77,563	31	248,490
2005	79,026	35	72,309	32	1,084	0	70,727	32	223,146
2006	82,918	37	74,662	33	1,528	1	66,465	29	225,573
2007	80,075	37	73,009	34	1,170	1	61,600	29	215,854
2008	75,079	35	77,549	36	811	0	61,333	29	214,772
2009	92,234	38	70,795	29	1,225	1	77,815	32	242,069
2010	100,846	41	64,117	26	1,141	0	82,485	33	248,589

Table 4. POLE-AND-LINE catches in the WCPFC Statistical Area, by species

YEAR	ALBACORE		BIGEYE		SKIPJACK		YELLOWFIN		TOTAL
	TONNES	%	TONNES	%	TONNES	%	TONNES	%	
1960	0	0	1,500	2	70,428	95	1,872	3	73,800
1961	0	0	1,800	1	127,011	96	3,259	2	132,070
1962	0	0	800	1	152,387	97	4,225	3	157,412
1963	0	0	1,800	2	94,757	96	2,071	2	98,628
1964	0	0	1,143	1	137,106	96	5,074	4	143,323
1965	0	0	1,254	1	129,933	97	3,434	3	134,621
1966	0	0	1,108	1	215,600	98	2,192	1	218,900
1967	0	0	2,803	2	168,846	97	3,125	2	174,774
1968	16,597	9	2,272	1	162,379	88	2,706	1	183,954
1969	32,148	9	1,675	0	315,795	89	5,166	1	354,784
1970	24,485	6	1,589	0	379,074	93	4,606	1	409,754
1971	53,451	14	931	0	333,284	85	5,248	1	392,914
1972	60,691	25	1,762	1	172,827	71	7,465	3	242,745
1973	68,908	21	1,258	0	253,217	77	7,458	2	330,841
1974	73,676	20	1,039	0	289,202	78	6,582	2	370,499
1975	52,257	19	1,334	0	218,271	78	7,801	3	279,663
1976	85,436	22	3,423	1	276,582	72	17,186	4	382,627
1977	32,034	9	3,325	1	294,641	85	15,257	4	345,257
1978	59,977	15	3,337	1	331,401	81	12,767	3	407,482
1979	44,762	13	2,540	1	285,859	83	11,638	3	344,799
1980	46,843	12	2,278	1	333,457	84	13,168	3	395,746
1981	27,426	8	2,596	1	294,292	86	19,270	6	343,584
1982	29,615	10	4,108	1	262,244	85	13,835	4	309,802
1983	21,098	6	4,055	1	299,762	89	13,266	4	338,181
1984	26,015	6	3,465	1	379,474	90	13,558	3	422,512
1985	20,714	7	4,326	1	250,010	85	18,156	6	293,206
1986	16,096	4	2,865	1	336,695	91	13,074	4	368,730
1987	19,091	6	3,134	1	262,467	88	13,243	4	297,935
1988	6,216	2	4,125	1	301,031	93	13,433	4	324,805
1989	8,629	3	4,298	1	289,706	91	15,169	5	317,802
1990	8,777	4	3,918	2	224,592	90	13,103	5	250,390
1991	7,117	2	1,991	1	292,950	93	12,921	4	314,979
1992	13,899	5	1,757	1	251,717	89	15,225	5	282,598
1993	12,871	4	2,331	1	280,066	91	12,698	4	307,966
1994	26,456	10	2,951	1	227,921	84	13,743	5	271,071
1995	21,120	7	3,776	1	257,147	87	15,063	5	297,106
1996	20,302	8	3,864	2	211,408	84	15,479	6	251,053
1997	32,259	12	3,611	1	225,612	82	12,362	5	273,844
1998	22,962	8	2,446	1	244,447	86	13,110	5	282,965
1999	50,507	17	2,176	1	235,739	78	13,817	5	302,239
2000	21,652	8	5,648	2	216,458	83	18,179	7	261,937
2001	29,467	14	4,274	2	159,225	77	14,342	7	207,308
2002	48,472	22	4,242	2	150,933	70	13,297	6	216,944
2003	36,126	16	2,869	1	171,403	77	11,278	5	221,676
2004	32,365	16	5,590	3	154,161	76	11,787	6	203,903
2005	16,162	8	4,018	2	177,474	83	15,401	7	213,055
2006	15,429	8	6,679	3	155,995	81	14,075	7	192,178
2007	37,785	19	4,194	2	143,272	72	13,339	7	198,590
2008	19,072	11	4,642	3	143,476	80	11,421	6	178,611
2009	31,284	19	3,390	2	119,302	72	11,200	7	165,176
2010	21,771	13	4,054	2	135,510	79	10,262	6	171,597

Table 5. PURSE SEINE catches in the WCPFC Statistical Area, by species

YEAR	ALBACORE		BIGEYE		SKIPJACK		YELLOWFIN		TOTAL
	TONNES	%	TONNES	%	TONNES	%	TONNES	%	
1960	0	0	58	1	3,728	71	1,438	28	5,224
1961	7	0	63	0	11,693	80	2,777	19	14,540
1962	53	0	173	1	11,674	62	6,975	37	18,875
1963	59	0	6	0	9,592	80	2,277	19	11,934
1964	128	0	231	1	25,006	86	3,647	13	29,012
1965	11	0	201	2	4,657	54	3,752	44	8,621
1966	111	1	9	0	10,949	65	5,844	35	16,913
1967	89	1	60	0	10,931	75	3,428	24	14,508
1968	267	2	183	1	7,587	50	7,106	47	15,143
1969	521	5	48	1	5,057	53	3,857	41	9,483
1970	317	2	560	3	7,534	46	7,811	48	16,222
1971	902	4	690	3	13,769	56	9,150	37	24,511
1972	277	1	672	2	18,079	62	10,002	34	29,030
1973	1,353	4	847	2	19,271	53	14,798	41	36,269
1974	161	1	1,121	4	11,136	38	17,130	58	29,548
1975	159	1	1,054	4	13,579	49	12,893	47	27,685
1976	1,109	3	1,081	3	23,604	58	14,976	37	40,770
1977	669	1	1,260	2	36,032	67	15,531	29	53,492
1978	1,115	2	1,051	2	36,524	70	13,350	26	52,040
1979	125	0	1,680	2	60,123	67	28,174	31	90,102
1980	329	0	1,737	2	79,349	70	31,849	28	113,264
1981	252	0	3,888	3	90,304	59	59,463	39	153,907
1982	561	0	5,114	2	169,820	68	73,738	30	249,233
1983	350	0	9,109	2	320,690	73	106,360	24	436,509
1984	3,380	1	9,193	2	328,933	72	114,961	25	456,467
1985	1,533	0	6,329	2	294,654	73	100,736	25	403,252
1986	1,542	0	7,222	2	349,795	75	105,901	23	464,460
1987	1,205	0	10,926	2	363,392	68	155,619	29	531,142
1988	1,208	0	7,821	1	488,046	82	95,536	16	592,611
1989	2,521	0	12,194	2	472,376	73	159,350	25	646,441
1990	1,995	0	11,998	2	584,302	76	175,435	23	773,730
1991	2,652	0	13,263	1	762,738	77	214,496	22	993,149
1992	4,104	0	18,882	2	706,413	73	236,915	25	966,314
1993	2,889	0	13,774	2	590,078	70	238,905	28	845,646
1994	2,026	0	10,469	1	748,284	77	216,871	22	977,650
1995	1,177	0	11,729	1	739,903	79	186,364	20	939,173
1996	581	0	21,665	2	759,953	85	115,706	13	897,905
1997	1,068	0	41,368	4	682,813	70	256,111	26	981,360
1998	1,554	0	26,767	2	1,006,585	78	261,197	20	1,296,103
1999	6,872	1	36,824	3	882,834	78	204,610	18	1,131,140
2000	2,408	0	39,888	3	919,773	77	229,033	19	1,191,102
2001	974	0	30,952	3	890,623	76	241,751	21	1,164,300
2002	3,303	0	28,885	2	1,073,062	82	210,557	16	1,315,807
2003	627	0	28,493	2	1,042,837	80	237,757	18	1,309,714
2004	7,200	1	32,390	2	1,167,452	82	213,294	15	1,420,336
2005	850	0	40,252	3	1,237,951	78	303,369	19	1,582,422
2006	364	0	42,314	3	1,333,019	81	261,926	16	1,637,623
2007	5,682	0	38,430	2	1,448,543	81	289,342	16	1,781,997
2008	825	0	50,637	3	1,396,897	76	391,357	21	1,839,716
2009	2,077	0	46,594	2	1,607,288	84	246,232	13	1,902,191
2010	308	0	42,463	2	1,475,541	81	299,941	16	1,818,253

Table 6. PURSE SEINE catches in the WCPFC Statistical Area, by species, adjusted with species compositions determined from observer grab samples corrected for size selectivity bias

YEAR	ALBACORE		BIGEYE		SKIPJACK		YELLOWFIN		TOTAL
	TONNES	%	TONNES	%	TONNES	%	TONNES	%	
1960	0	0	58	1	3,728	71	1,438	28	5,224
1961	7	0	63	0	11,693	80	2,777	19	14,540
1962	53	0	173	1	11,674	62	6,975	37	18,875
1963	59	0	6	0	9,592	80	2,277	19	11,934
1964	128	0	231	1	25,006	86	3,647	13	29,012
1965	11	0	201	2	4,657	54	3,752	44	8,621
1966	111	1	9	0	10,949	65	5,844	35	16,913
1967	89	1	64	0	10,977	75	3,445	24	14,575
1968	267	2	219	1	7,891	51	7,124	46	15,501
1969	521	5	55	1	5,031	53	3,876	41	9,483
1970	317	2	580	4	7,451	46	7,874	49	16,222
1971	902	4	741	3	13,603	55	9,265	38	24,511
1972	277	1	710	2	18,004	62	10,039	35	29,030
1973	1,353	4	925	3	19,074	53	14,916	41	36,268
1974	161	1	1,315	4	10,716	36	17,356	59	29,548
1975	159	1	1,489	5	13,011	47	13,027	47	27,686
1976	1,109	3	2,024	5	22,249	55	15,388	38	40,770
1977	669	1	2,672	5	34,706	65	15,444	29	53,491
1978	1,115	2	3,369	6	33,585	65	13,971	27	52,040
1979	125	0	3,617	4	59,006	65	27,354	30	90,102
1980	329	0	4,248	4	75,488	67	33,201	29	113,266
1981	252	0	9,970	6	95,887	62	47,798	31	153,907
1982	561	0	16,281	7	164,394	66	67,995	27	249,231
1983	350	0	26,676	6	295,915	68	113,568	26	436,509
1984	3,380	1	26,538	6	303,840	67	122,710	27	456,468
1985	1,533	0	23,718	6	264,953	66	113,048	28	403,252
1986	1,542	0	27,221	6	321,972	69	113,726	24	464,461
1987	1,205	0	31,910	6	367,324	69	130,704	25	531,143
1988	1,208	0	32,814	6	410,804	69	147,784	25	592,610
1989	2,521	0	34,834	5	437,723	68	171,365	27	646,443
1990	1,995	0	44,627	6	532,995	69	194,113	25	773,730
1991	2,652	0	45,930	5	699,745	70	244,823	25	993,150
1992	4,104	0	51,966	5	671,507	69	238,736	25	966,313
1993	2,889	0	38,781	5	608,647	72	195,330	23	845,647
1994	2,026	0	43,498	4	705,848	72	226,280	23	977,652
1995	1,177	0	40,738	4	663,673	71	233,584	25	939,172
1996	581	0	55,490	6	670,653	75	171,181	19	897,905
1997	1,068	0	100,316	10	614,804	63	265,174	27	981,362
1998	1,554	0	66,363	5	892,009	69	336,179	26	1,296,105
1999	6,872	1	65,248	6	770,586	68	288,432	25	1,131,138
2000	2,408	0	71,492	6	818,442	69	298,761	25	1,191,103
2001	974	0	57,115	5	816,221	70	289,990	25	1,164,300
2002	3,303	0	59,249	5	923,536	70	329,719	25	1,315,807
2003	627	0	40,771	3	911,285	70	357,030	27	1,309,713
2004	7,200	1	70,228	5	1,062,606	75	280,304	20	1,420,338
2005	850	0	70,530	4	1,080,289	68	430,757	27	1,582,426
2006	364	0	69,152	4	1,204,498	74	363,609	22	1,637,623
2007	5,682	0	51,482	3	1,343,320	75	381,514	21	1,781,998
2008	825	0	55,917	3	1,283,841	70	499,133	27	1,839,716
2009	2,077	0	69,082	4	1,464,575	77	366,457	19	1,902,191
2010	308	0	54,356	3	1,381,070	76	382,521	21	1,818,255

Table 7. Catches of target tunas in the WCPFC Statistical Area, by flag

YEAR	AUSTRALIA	BELIZE	CANADA	CHINA	COOK ISLANDS	ECUADOR	EL SALVADOR	FEDERATED STATES OF MICRONESIA
1960	-	-	-	-	-	-	-	-
1961	-	-	-	-	-	-	-	-
1962	-	-	-	-	-	-	-	-
1963	-	-	-	-	-	-	-	-
1964	-	-	-	-	-	-	-	-
1965	-	-	-	-	-	-	-	-
1966	-	-	-	-	-	-	-	-
1967	-	-	-	-	-	-	-	-
1968	-	-	-	-	-	-	-	-
1969	-	-	-	-	-	-	-	-
1970	100	-	-	-	-	-	-	-
1971	100	-	-	-	-	-	-	-
1972	100	-	-	-	-	-	-	-
1973	100	-	-	-	-	-	-	-
1974	100	-	-	-	-	-	-	-
1975	2,000	-	-	-	-	-	-	-
1976	147	-	-	-	-	-	-	-
1977	131	-	-	-	-	-	-	-
1978	375	-	-	-	-	-	-	-
1979	100	-	-	-	-	-	-	-
1980	117	-	-	-	-	-	-	-
1981	357	-	-	-	-	-	-	-
1982	238	-	-	-	-	-	-	-
1983	230	-	-	-	-	-	-	-
1984	147	-	-	-	-	-	-	-
1985	18	-	-	-	-	-	-	-
1986	101	-	-	-	-	-	-	-
1987	1,455	-	-	-	-	-	-	-
1988	1,752	-	235	44	-	-	-	-
1989	2,836	-	235	144	-	-	-	-
1990	6,983	-	235	453	-	-	-	-
1991	9,380	-	235	1,007	-	-	-	11,338
1992	9,524	-	235	2,715	-	-	-	15,472
1993	7,212	-	235	6,419	-	-	-	16,908
1994	5,415	-	235	12,677	32	-	-	20,941
1995	6,288	54	235	10,586	63	-	-	6,759
1996	5,249	129	136	6,026	59	-	-	7,394
1997	7,550	77	149	3,664	-	-	-	8,254
1998	5,153	276	167	3,272	22	-	-	14,179
1999	7,551	211	253	7,515	56	-	-	10,881
2000	6,997	270	351	6,244	335	3,992	-	21,688
2001	5,279	7,143	206	9,947	206	1,057	599	17,646
2002	5,232	3,385	144	15,632	770	427	1,488	20,607
2003	5,809	2,697	-	42,210	2,462	1,562	74	30,829
2004	4,200	943	63	40,172	3,207	3,051	-	28,471
2005	3,093	1,056	72	61,534	3,125	5,193	-	28,302
2006	5,030	632	135	73,736	2,841	9,523	-	10,774
2007	4,404	595	27	69,796	3,266	9,187	6,025	15,440
2008	3,969	225	-	83,969	2,817	25,415	10,962	19,424
2009	3,646	190	-	114,757	2,054	4,428	8,824	21,154
2010	2,566	127	-	78,734	3,058	8,451	6,824	23,802

Table 7 continued

YEAR	FIJI ISLANDS	FRENCH POLYNESIA	INDONESIA	JAPAN	KIRIBATI	REPUBLIC OF KOREA	MARSHALL ISLANDS	MEXICO
1960	–	–	7,415	206,606	–	744	–	–
1961	–	–	8,054	269,191	–	385	–	–
1962	–	–	8,749	302,176	–	708	–	–
1963	–	–	9,505	228,717	–	1,955	–	–
1964	–	–	10,327	270,506	–	2,527	–	–
1965	–	–	11,223	232,844	–	7,078	–	–
1966	–	–	12,198	355,838	–	13,405	–	–
1967	–	–	13,260	281,568	–	14,469	–	–
1968	–	–	14,417	273,603	–	10,794	–	–
1969	–	–	15,677	442,850	–	17,077	–	–
1970	–	–	17,600	505,452	–	16,927	–	–
1971	–	–	18,100	471,129	–	16,541	–	–
1972	–	–	28,600	341,854	–	17,678	–	–
1973	–	–	32,500	418,048	–	25,938	–	–
1974	12	–	33,779	429,014	–	14,105	–	–
1975	11	–	34,378	358,037	–	29,343	–	–
1976	742	–	33,375	474,987	–	44,464	–	–
1977	1,711	–	37,235	459,318	–	43,722	–	–
1978	2,524	–	40,024	513,391	–	33,102	–	–
1979	3,494	696	50,973	466,434	–	41,915	–	–
1980	2,496	936	61,795	522,844	1,812	46,096	–	–
1981	5,836	1,001	68,809	460,646	2,376	33,310	–	–
1982	4,428	1,034	74,056	501,943	2,269	39,684	–	–
1983	3,741	836	84,532	554,560	3,406	37,589	–	468
1984	4,572	1,250	96,662	639,034	3,843	33,293	–	6,600
1985	3,946	836	101,905	511,605	2,531	44,292	–	–
1986	3,125	961	111,733	582,323	3,226	63,034	–	–
1987	3,889	878	124,175	504,820	2,246	91,201	–	–
1988	3,891	715	129,922	599,082	3,284	113,653	–	–
1989	5,189	856	145,320	517,619	4,094	139,904	–	–
1990	3,830	2,109	142,237	471,098	2,407	204,399	–	–
1991	5,298	2,335	168,844	490,676	2,036	247,950	–	–
1992	4,790	2,019	194,659	472,795	2,363	213,553	9	–
1993	4,966	2,387	173,969	516,859	2,104	150,165	137	–
1994	5,937	2,804	196,898	473,787	3,131	226,531	48	–
1995	7,009	3,343	204,837	481,106	5,423	206,176	22	–
1996	6,803	3,583	230,450	417,584	6,645	174,948	–	–
1997	4,354	4,564	211,815	507,798	7,020	188,667	–	–
1998	4,013	5,710	277,733	543,367	9,389	247,929	–	–
1999	4,075	5,200	296,242	482,046	9,793	173,490	–	–
2000	9,660	6,833	284,310	498,958	14,726	207,498	7,560	–
2001	11,309	7,736	254,400	439,331	5,401	216,691	35,774	–
2002	11,551	7,347	260,421	451,896	9,830	254,593	38,952	–
2003	10,854	6,309	251,746	469,809	6,898	221,079	37,875	–
2004	17,312	5,561	262,615	441,587	6,661	212,655	46,676	–
2005	11,974	5,167	281,494	481,780	9,165	237,353	56,164	–
2006	15,472	6,076	314,638	445,868	6,723	274,859	42,349	–
2007	10,042	6,408	315,416	473,248	18,020	278,482	59,409	–
2008	11,664	5,673	319,148	432,459	18,374	275,132	33,013	–
2009	10,524	6,878	328,009	398,657	34,004	310,139	43,973	–
2010	10,060	6,192	320,726	417,017	38,787	300,057	57,225	–

Table 7 continued

YEAR	NAURU	NEW CALEDONIA	NEW ZEALAND	NIUE	PALAU	PAPUA NEW GUINEA	PHILIPPINES	RUSSIA
1960	-	-	-	-	-	-	20,585	-
1961	-	-	-	-	-	-	21,735	-
1962	-	-	-	-	-	-	22,957	-
1963	-	-	-	-	-	-	24,252	-
1964	-	-	-	-	1,166	-	25,626	-
1965	-	-	-	-	2,670	-	27,084	-
1966	-	-	-	-	2,686	-	28,632	-
1967	-	-	5	-	3,406	-	30,275	-
1968	-	-	14	-	5,056	-	32,021	-
1969	-	-	-	-	4,762	-	33,875	-
1970	-	-	50	-	8,082	2,428	52,000	-
1971	-	-	-	-	2,143	16,974	57,200	-
1972	-	-	268	-	1,519	13,130	60,700	-
1973	-	-	484	-	2,350	28,216	70,900	-
1974	-	-	899	-	6,808	41,630	81,188	-
1975	-	-	647	-	6,269	17,369	84,450	-
1976	-	-	25	-	5,323	32,921	73,653	-
1977	-	-	621	-	4,012	24,115	118,149	-
1978	-	-	1,701	-	9,694	48,859	87,319	-
1979	-	-	830	-	5,688	26,857	94,308	-
1980	-	-	1,519	-	6,576	33,994	77,505	-
1981	-	229	2,111	-	9,411	31,412	94,616	-
1982	-	868	2,436	-	4,053	-	104,047	-
1983	-	461	6,565	-	-	-	118,529	-
1984	-	150	7,005	-	-	2,744	105,217	-
1985	-	281	5,713	-	97	9,300	137,308	2,111
1986	-	367	6,793	-	131	-	145,097	4,175
1987	-	1,102	5,035	-	161	-	141,461	8,995
1988	-	1,092	3,923	-	157	-	124,786	6,189
1989	-	871	10,323	-	77	-	151,124	4,935
1990	-	1,730	7,120	-	88	-	202,214	2,126
1991	-	1,536	7,765	-	-	-	221,817	3,715
1992	-	1,092	4,524	-	213	-	165,652	2,126
1993	-	1,294	4,415	-	206	8	134,921	8,714
1994	-	1,355	8,513	-	184	1,381	172,558	6,722
1995	-	1,274	8,147	-	100	12,700	198,613	-
1996	-	1,201	10,194	-	100	10,572	205,003	-
1997	-	977	10,451	-	107	19,400	208,767	-
1998	-	1,543	15,154	-	100	50,727	235,586	-
1999	-	1,616	10,141	-	100	38,980	226,319	-
2000	11	1,662	18,918	-	240	68,818	234,519	-
2001	13	1,718	17,533	-	62	92,806	210,786	-
2002	7	1,926	38,574	-	4	124,705	226,863	-
2003	20	2,007	30,614	-	20	159,622	264,106	-
2004	3	2,189	33,886	6	35	225,441	271,760	-
2005	-	2,114	27,917	105	-	235,439	274,247	-
2006	-	1,807	27,410	286	-	233,170	291,564	-
2007	-	1,770	38,969	192	-	230,015	320,567	-
2008	3	1,993	33,878	17	-	205,682	360,187	-
2009	4	2,187	30,618	182	-	213,018	328,047	-
2010	4	2,488	26,939	110	-	208,253	285,594	-

Table 7 continued

YEAR	SAMOA	SOLOMON ISLANDS	SPAIN	CHINESE TAIPEI	TONGA
1960	–	–	–	4,035	–
1961	–	–	–	4,485	–
1962	–	–	–	4,779	–
1963	–	–	–	4,642	–
1964	–	–	–	5,482	–
1965	–	–	–	7,524	–
1966	–	–	–	14,812	–
1967	–	–	–	25,911	–
1968	–	–	–	35,302	–
1969	–	–	–	30,096	–
1970	–	–	–	33,887	–
1971	–	4,711	–	42,640	–
1972	–	7,905	–	48,612	–
1973	–	6,624	–	51,807	–
1974	–	10,332	–	37,501	–
1975	–	7,094	–	43,804	–
1976	–	15,763	–	43,546	–
1977	–	12,202	–	50,858	–
1978	–	18,353	–	46,606	–
1979	–	24,289	–	43,450	–
1980	–	23,241	–	48,323	–
1981	–	22,832	–	37,900	–
1982	–	20,071	–	32,644	205
1983	–	33,432	–	44,458	208
1984	–	35,615	–	56,407	218
1985	–	29,997	–	55,987	233
1986	–	42,249	–	65,658	252
1987	–	29,437	–	84,558	299
1988	–	40,513	–	117,865	276
1989	–	34,262	–	135,125	235
1990	–	26,612	–	164,640	192
1991	–	46,888	–	213,007	197
1992	–	30,558	–	263,185	225
1993	300	28,006	–	207,231	329
1994	736	33,925	–	223,590	411
1995	2,151	49,665	–	228,798	461
1996	2,375	38,697	–	226,436	579
1997	5,498	47,442	–	217,026	663
1998	6,820	48,378	–	305,354	833
1999	5,790	45,662	8,613	251,034	1,084
2000	5,389	12,929	12,896	279,197	1,161
2001	5,864	17,217	2,402	284,433	1,733
2002	4,927	18,537	–	317,311	1,672
2003	2,944	26,364	–	256,557	971
2004	1,967	24,904	5,587	258,172	388
2005	1,626	20,023	3,453	243,738	629
2006	2,564	29,462	11,825	254,379	759
2007	3,559	21,244	23,749	274,963	861
2008	2,796	17,378	36,358	244,692	592
2009	3,422	17,883	26,687	237,705	271
2010	3,090	24,785	29,485	247,623	128

Table 7 continued

YEAR	TOKELAU	TUVALU	UNITED STATES OF AMERICA	VANUATU	VIETNAM	EASTERN PACIFIC NEI	TOTAL
1960	-	-	708	-	-	-	240,093
1961	-	-	626	-	-	-	304,476
1962	-	-	669	-	-	-	340,038
1963	-	-	549	-	-	-	269,620
1964	-	-	516	-	-	-	316,150
1965	-	-	501	-	-	-	288,924
1966	-	-	513	-	-	-	428,084
1967	-	-	446	-	-	-	369,340
1968	-	-	367	-	-	-	371,574
1969	-	-	439	-	-	-	544,776
1970	-	-	493	-	-	-	637,019
1971	-	-	437	-	-	-	629,975
1972	-	-	419	-	-	-	520,785
1973	-	-	307	-	-	-	637,274
1974	-	-	347	-	-	-	655,715
1975	-	-	310	-	-	-	583,712
1976	-	-	1,071	-	-	-	726,017
1977	-	-	1,359	-	-	672	754,105
1978	-	-	1,477	-	-	926	804,351
1979	-	-	11,852	-	-	734	771,620
1980	-	-	13,483	-	-	114	840,851
1981	-	-	40,496	-	-	98	811,440
1982	-	216	75,494	-	-	75	863,761
1983	-	337	181,593	-	-	2,167	1,073,112
1984	-	540	162,380	-	-	10,188	1,165,865
1985	-	4	110,031	-	-	1,221	1,017,416
1986	-	390	123,517	-	-	-	1,153,132
1987	-	632	145,072	-	-	405	1,145,821
1988	-	1,090	122,380	-	-	-	1,270,849
1989	-	149	148,339	-	-	-	1,301,637
1990	-	90	171,301	-	-	-	1,409,864
1991	-	29	225,040	-	-	-	1,659,093
1992	-	8	209,243	-	-	-	1,594,960
1993	-	-	203,518	-	-	-	1,470,303
1994	-	-	215,683	820	-	-	1,614,314
1995	-	-	176,125	7,276	-	211	1,617,422
1996	-	-	158,219	11,497	-	642	1,524,521
1997	-	-	154,149	26,164	-	1,776	1,636,332
1998	-	-	184,278	39,423	-	2,934	2,002,340
1999	-	-	191,739	46,162	-	1,910	1,826,463
2000	-	-	135,410	37,545	-	2,925	1,881,042
2001	-	-	128,503	11,917	-	510	1,788,222
2002	8	-	136,190	28,031	-	244	1,981,274
2003	3	-	101,004	28,443	-	2,600	1,965,488
2004	3	-	79,395	65,054	-	2,014	2,043,978
2005	6	19	97,870	86,564	-	715	2,179,937
2006	6	12	81,165	73,157	-	724	2,216,946
2007	8	26	103,576	82,758	-	715	2,372,737
2008	8	22	221,186	45,699	-	709	2,413,444
2009	12	4,456	292,702	47,646	-	709	2,492,786
2010	4	10,582	256,872	38,861	11,958	709	2,421,111

Table 8. Catches of albacore in the Pacific Ocean.

YEAR	SOUTHPACIFIC OCEAN					NORTH PACIFIC OCEAN					TOTAL
	LONGLINE	POLE-AND-LINE	TROLL	OTHER	SUBTOTAL	LONGLINE	POLE-AND-LINE	TROLL	OTHER	SUBTOTAL	
1960	22,248	45	0	0	22,293	17,384	25,156	20,105	769	63,414	85,707
1961	23,742	0	0	0	23,742	17,490	21,476	12,059	1,631	52,656	76,398
1962	35,219	0	0	0	35,219	15,850	9,814	19,753	1,926	47,343	82,562
1963	31,095	16	0	0	31,111	13,639	28,852	25,145	1,438	69,074	100,185
1964	22,824	0	0	0	22,824	15,659	27,269	18,391	1,271	62,590	85,414
1965	25,455	0	0	0	25,455	14,226	41,908	16,557	863	73,554	99,009
1966	38,661	0	0	0	38,661	25,600	24,430	15,377	1,285	66,692	105,353
1967	43,952	0	5	0	43,957	29,821	34,594	17,975	1,316	83,706	127,663
1968	32,368	0	14	0	32,382	25,152	21,503	21,462	2,327	70,444	102,826
1969	24,805	0	0	0	24,805	19,223	34,908	20,192	1,838	76,161	100,966
1970	34,775	100	50	0	34,925	19,229	28,679	21,422	1,656	70,986	105,911
1971	38,530	100	0	0	38,630	14,982	55,028	22,272	2,436	94,718	133,348
1972	39,131	122	268	0	39,521	19,025	64,319	27,521	1,659	112,524	152,045
1973	46,705	141	484	0	47,330	17,030	71,003	17,053	2,006	107,092	154,422
1974	33,039	112	898	0	34,049	14,047	78,341	21,509	1,384	115,281	149,330
1975	22,849	105	646	0	23,600	14,547	55,395	19,043	1,219	90,204	113,804
1976	28,957	100	25	0	29,082	18,510	88,036	16,183	3,217	125,946	155,028
1977	38,019	100	621	0	38,740	17,684	33,431	10,022	2,264	63,401	102,141
1978	32,890	100	1,686	0	34,676	13,851	60,827	16,636	8,064	99,378	134,054
1979	26,162	100	814	0	27,076	14,738	44,965	7,302	4,211	71,216	98,292
1980	30,972	101	1,468	0	32,541	15,635	47,124	7,768	4,707	75,234	107,775
1981	32,694	0	2,085	5	34,784	18,864	28,174	12,837	11,526	71,401	106,185
1982	28,347	1	2,434	6	30,788	18,275	30,039	6,713	13,963	68,990	99,778
1983	24,309	0	744	39	25,092	16,586	21,705	9,584	7,676	55,551	80,643
1984	20,340	2	2,773	1,589	24,704	16,133	27,043	9,354	18,670	71,200	95,904
1985	27,138	0	3,253	1,937	32,328	14,781	22,212	6,471	14,947	58,411	90,739
1986	32,641	0	2,003	1,946	36,590	13,140	16,528	4,738	10,938	45,344	81,934
1987	21,979	9	2,134	930	25,052	15,411	19,240	2,870	11,509	49,030	74,082
1988	28,288	0	4,296	5,283	37,867	15,601	6,814	4,367	18,968	45,750	83,617
1989	18,738	0	8,370	21,968	49,076	14,536	8,683	2,000	19,986	45,205	94,281
1990	19,368	245	6,975	7,538	34,126	16,608	8,647	2,905	26,159	54,319	88,445
1991	23,385	14	7,805	1,489	32,693	18,049	7,103	1,984	10,798	37,934	70,627
1992	30,592	11	6,578	65	37,246	19,991	13,888	4,934	16,580	55,393	92,639
1993	30,229	74	4,296	70	34,669	31,143	12,797	6,748	4,112	54,800	89,469
1994	34,118	67	7,164	89	41,438	30,825	26,389	13,134	3,486	73,834	115,272
1995	29,332	139	7,716	104	37,291	32,948	21,061	10,758	1,725	66,492	103,783
1996	23,816	30	7,379	156	31,381	39,383	20,296	21,849	1,070	82,598	113,979
1997	27,103	21	4,679	133	31,936	48,365	32,311	18,674	2,736	102,086	134,022
1998	37,791	36	6,280	85	44,192	48,050	23,005	20,074	3,237	94,366	138,558
1999	31,909	138	3,419	74	35,540	46,767	50,429	13,853	11,155	122,204	157,744
2000	33,968	102	6,269	139	40,478	41,966	21,619	15,245	4,985	83,815	124,293
2001	48,638	37	5,142	199	54,016	37,125	29,569	16,738	3,002	86,434	140,450
2002	60,590	18	4,574	150	65,332	33,359	48,832	16,323	6,219	104,733	170,065
2003	56,769	12	5,612	130	62,523	32,476	36,173	21,886	3,184	93,719	156,242
2004	57,787	110	4,531	188	62,616	29,284	32,380	22,255	8,977	92,896	155,512
2005	57,597	29	3,451	215	61,292	32,441	16,199	14,067	3,183	65,890	127,182
2006	61,422	29	2,883	326	64,660	33,151	15,423	18,931	1,137	68,642	133,302
2007	56,590	17	2,082	60	58,749	32,014	37,789	18,670	6,438	94,911	153,660
2008	56,347	12	3,502	160	60,021	28,458	19,066	16,844	2,926	67,294	127,315
2009	73,932	21	2,031	211	76,195	28,735	33,481	16,836	2,767	81,819	158,014
2010	78,872	14	2,141	190	81,217	31,756	21,763	17,172	999	71,690	152,907

Table 9. Catches of bigeye in the Pacific Ocean.

YEAR	WESTERN AND CENTRAL PACIFIC OCEAN					EASTERN PACIFIC OCEAN					TOTAL
	LONGLINE	POLE-AND-LINE	PURSE SEINE	OTHER	SUBTOTAL	LONGLINE	POLE-AND-LINE	PURSE SEINE	OTHER	SUBTOTAL	
1960	43,467	1,500	58	0	45,025	17,722	0	24	0	17,746	62,771
1961	37,517	1,800	63	0	39,380	52,431	106	105	0	52,642	92,022
1962	35,895	800	173	0	36,868	45,050	318	302	0	45,670	82,538
1963	42,540	1,800	6	0	44,346	66,617	140	0	0	66,757	111,103
1964	30,978	1,143	231	28	32,380	46,279	127	0	0	46,406	78,786
1965	29,844	1,254	201	30	31,329	29,164	231	0	0	29,395	60,724
1966	31,949	1,108	9	86	33,152	34,800	292	210	0	35,302	68,454
1967	32,791	2,803	60	253	35,907	35,878	1,305	1,697	0	38,880	74,787
1968	27,199	2,272	183	204	29,858	35,233	115	4,618	0	39,966	69,824
1969	32,371	1,675	48	62	34,156	52,071	0	1,093	0	53,164	87,320
1970	34,348	1,589	726	2,802	39,465	33,341	0	2,411	0	35,752	75,217
1971	36,798	931	876	3,057	41,662	29,804	75	4,359	18	34,256	75,918
1972	49,334	1,762	865	3,497	55,458	36,128	126	3,971	0	40,225	95,683
1973	40,285	1,258	1,078	4,218	46,839	50,777	236	3,342	0	54,355	101,194
1974	41,787	1,039	1,389	4,719	48,934	36,961	0	1,554	0	38,515	87,449
1975	57,623	1,334	1,328	4,938	65,223	41,733	36	6,574	0	48,343	113,566
1976	68,514	3,423	1,312	4,123	77,372	54,290	75	17,212	7	71,584	148,956
1977	66,249	3,325	1,587	5,627	76,788	74,086	2	11,161	0	85,249	162,037
1978	50,375	3,337	1,151	4,231	59,094	70,659	0	18,539	0	89,198	148,292
1979	57,186	2,540	2,031	4,615	66,372	55,435	0	12,097	1	67,533	133,905
1980	56,553	2,278	2,160	4,142	65,133	64,335	0	21,938	130	86,403	151,536
1981	41,564	2,596	4,268	4,918	53,346	53,416	0	14,921	7	68,344	121,690
1982	45,204	4,108	5,251	4,738	59,301	53,365	42	6,939	3	60,349	119,650
1983	41,412	4,055	9,442	4,987	59,896	60,043	39	4,575	37	64,694	124,590
1984	46,429	3,465	9,615	5,171	64,680	46,394	2	8,861	11	55,268	119,948
1985	51,326	4,326	6,944	6,110	68,706	66,325	2	6,056	15	72,398	141,104
1986	46,741	2,865	7,712	6,459	63,777	102,425	0	2,686	74	105,185	168,962
1987	59,357	3,134	11,215	5,563	79,269	100,121	0	1,177	49	101,347	180,616
1988	49,663	4,125	8,220	6,439	68,447	72,758	5	1,535	15	74,313	142,760
1989	53,173	4,298	12,629	7,137	77,237	70,963	0	2,030	1	72,994	150,231
1990	65,108	3,918	12,411	7,623	89,060	98,871	0	5,921	59	104,851	193,911
1991	47,079	1,991	13,750	8,477	71,297	104,195	31	4,870	25	109,121	180,418
1992	61,925	1,757	19,151	5,551	88,384	84,808	0	7,179	13	92,000	180,384
1993	56,335	2,331	13,929	4,911	77,506	72,498	0	9,657	35	82,190	159,696
1994	66,002	2,951	10,630	7,360	86,943	71,360	0	34,899	806	107,065	194,008
1995	56,345	3,776	11,854	7,958	79,933	58,269	0	45,321	1,369	104,959	184,892
1996	45,909	3,864	21,791	8,750	80,314	46,958	0	61,311	748	109,017	189,331
1997	58,299	3,611	41,625	6,864	110,399	52,580	0	64,272	20	116,872	227,271
1998	72,499	2,446	27,126	7,903	109,974	46,375	0	44,129	628	91,132	201,106
1999	64,956	2,176	36,970	7,970	112,072	36,450	0	51,158	538	88,146	200,218
2000	59,614	5,648	40,345	7,925	113,532	47,605	0	94,640	253	142,498	256,030
2001	62,080	4,274	31,237	7,233	104,824	68,755	0	61,156	19	129,930	234,754
2002	79,267	4,242	28,922	8,005	120,436	74,424	0	57,440	12	131,876	252,312
2003	71,488	2,869	28,878	7,521	110,756	59,776	0	54,174	21	113,971	224,727
2004	80,193	5,590	32,701	6,278	124,762	43,483	0	67,592	194	111,269	236,031
2005	66,213	4,018	40,588	4,859	115,678	41,432	0	69,826	25	111,283	226,961
2006	70,819	6,679	42,495	4,715	124,708	33,708	0	83,978	40	117,726	242,434
2007	69,872	4,194	38,814	4,813	117,693	29,928	0	63,074	44	93,046	210,739
2008	73,314	4,642	50,908	3,434	132,298	25,624	0	75,040	28	100,692	232,990
2009	66,833	3,390	46,501	3,925	120,649	27,935	0	76,513	15	104,463	225,112
2010	57,311	4,054	42,273	3,012	106,650	22,993	0	57,753	0	80,746	187,396

Table 10. Catches of skipjack in the Pacific Ocean

YEAR	WESTERN AND CENTRAL PACIFIC OCEAN					EASTERN PACIFIC OCEAN					TOTAL
	LONGLINE	POLE-AND-LINE	PURSE SEINE	OTHER	SUBTOTAL	LONGLINE	POLE-AND-LINE	PURSE SEINE	OTHER	SUBTOTAL	
1960	0	70,428	3,728	15,782	89,938	0	28,929	16,649	481	46,059	135,997
1961	0	127,011	11,693	18,032	156,736	0	28,995	45,706	428	75,129	231,865
1962	4	152,387	11,674	17,559	181,624	0	17,660	58,939	503	77,102	258,726
1963	0	94,757	9,592	18,354	122,703	0	17,138	82,404	2,389	101,931	224,634
1964	5	137,106	25,006	20,801	182,918	0	10,306	51,759	3,609	65,674	248,592
1965	11	129,933	4,657	20,620	155,221	0	19,867	64,056	1,046	84,969	240,190
1966	50	215,600	10,949	22,913	249,512	0	14,083	50,264	1,960	66,307	315,819
1967	101	168,846	10,931	24,930	204,808	0	18,016	104,928	5,038	127,982	332,790
1968	60	162,379	7,587	24,929	194,955	0	7,340	59,642	10,128	77,110	272,065
1969	124	315,795	5,057	30,070	351,046	0	6,970	46,020	11,904	64,894	415,940
1970	1,260	379,074	10,585	32,164	423,083	0	7,470	47,466	7,234	62,170	485,253
1971	1,440	333,284	17,034	29,164	380,922	0	11,679	94,502	6,702	112,883	493,805
1972	1,524	172,827	21,664	41,783	237,798	0	6,556	29,804	1,144	37,504	275,302
1973	1,838	253,217	23,299	50,407	328,761	0	9,135	39,247	638	49,020	377,781
1974	2,088	289,202	15,630	49,528	356,448	0	7,629	79,418	510	87,557	444,005
1975	1,893	218,271	18,409	50,189	288,762	0	13,848	120,358	526	134,732	423,494
1976	2,056	276,582	28,495	51,216	358,349	0	11,256	124,957	705	136,918	495,267
1977	3,107	294,641	40,797	66,475	405,020	0	7,522	84,603	1,960	94,085	499,105
1978	3,219	331,401	44,109	73,644	452,373	0	6,047	172,294	1,324	179,665	632,038
1979	2,175	285,859	65,825	60,440	414,299	0	6,346	133,695	1,462	141,503	555,802
1980	630	333,457	82,700	42,819	459,606	0	5,225	130,912	1,965	138,102	597,708
1981	754	294,292	94,987	48,226	438,259	0	5,906	119,165	930	126,001	564,260
1982	1,013	262,244	173,901	53,084	490,242	0	3,760	100,499	410	104,669	594,911
1983	2,143	299,762	324,900	56,879	683,684	0	4,387	56,851	737	61,975	745,659
1984	867	379,474	337,471	44,278	762,090	0	2,884	59,859	868	63,611	825,701
1985	1,100	250,010	308,957	43,557	603,624	0	946	50,829	227	52,002	655,626
1986	1,434	336,695	368,138	49,135	755,402	0	1,921	65,634	190	67,745	823,147
1987	2,320	262,467	375,265	47,828	687,880	0	2,233	64,019	214	66,466	754,346
1988	1,930	301,031	497,052	49,141	849,154	0	4,325	87,113	689	92,127	941,281
1989	2,502	289,706	482,785	48,475	823,468	0	2,940	94,934	1,047	98,921	922,389
1990	358	224,592	603,347	73,185	901,482	0	823	74,369	1,915	77,107	978,589
1991	882	292,950	777,350	69,061	1,140,243	0	1,717	62,228	1,945	65,890	1,206,133
1992	431	251,717	725,134	62,898	1,040,180	0	1,957	84,283	1,054	87,294	1,127,474
1993	569	280,066	609,304	47,383	937,322	0	3,772	83,830	2,317	89,919	1,027,241
1994	353	227,921	756,558	58,859	1,043,691	0	3,240	70,126	804	74,170	1,117,861
1995	572	257,147	750,103	69,681	1,077,503	0	5,253	127,047	1,988	134,288	1,211,791
1996	3,874	211,408	770,159	68,696	1,054,137	0	2,555	103,973	1,313	107,841	1,161,978
1997	3,932	225,612	691,616	69,750	990,910	0	3,260	153,456	231	156,947	1,147,857
1998	4,904	244,447	1,015,686	76,239	1,341,276	0	1,684	140,631	531	142,846	1,484,122
1999	4,064	235,739	893,846	74,714	1,208,363	0	2,044	261,565	1,594	265,203	1,473,566
2000	4,516	216,458	929,792	93,030	1,243,796	68	231	204,307	67	204,673	1,448,469
2001	5,036	159,225	900,277	74,525	1,139,063	1,214	448	143,561	34	145,257	1,284,320
2002	3,376	150,933	1,085,085	76,119	1,315,513	261	616	153,303	119	154,299	1,469,812
2003	3,694	171,403	1,056,378	72,685	1,304,160	634	638	274,529	2,777	278,578	1,582,738
2004	3,841	154,161	1,180,851	61,975	1,400,828	713	528	198,664	1,105	201,010	1,601,838
2005	1,045	177,474	1,250,314	60,451	1,489,284	231	1,300	261,780	1,780	265,091	1,754,375
2006	1,470	155,484	1,343,784	57,558	1,558,296	224	435	297,408	986	299,053	1,857,349
2007	1,127	142,982	1,462,020	64,825	1,670,954	107	276	208,290	787	209,460	1,880,414
2008	789	142,976	1,413,903	76,501	1,634,169	55	499	296,648	1,163	298,365	1,932,534
2009	1,148	118,671	1,632,594	63,679	1,816,092	28	151	229,668	1,111	230,958	2,047,050
2010	1,087	135,049	1,493,079	67,005	1,696,220	56	47	147,192	1	147,296	1,843,516

Table 11. Catches of yellowfin in the Pacific Ocean

YEAR	WESTERN AND CENTRAL PACIFIC OCEAN					EASTERN PACIFIC OCEAN					TOTAL
	LOGLINE	POLE-AND-LINE	PURSE SEINE	OTHER	SUBTOTAL	LOGLINE	POLE-AND-LINE	PURSE SEINE	OTHER	SUBTOTAL	
1960	55,020	1,872	1,438	15,337	73,667	5,934	22,151	79,425	458	107,968	181,635
1961	53,166	3,259	2,777	16,236	75,438	12,500	15,220	80,058	949	108,727	184,165
1962	55,547	4,225	6,975	17,197	83,944	10,211	11,052	56,271	706	78,240	162,184
1963	53,185	2,071	2,277	18,223	75,756	18,973	7,041	48,004	688	74,706	150,462
1964	45,241	5,074	3,647	20,186	74,148	16,975	3,989	78,318	738	100,020	174,168
1965	45,487	3,434	3,752	20,956	73,629	15,620	6,983	65,348	312	88,263	161,892
1966	61,623	2,192	5,844	23,409	93,068	9,097	5,302	68,982	507	83,888	176,956
1967	35,720	3,125	3,428	26,303	68,576	9,285	4,512	65,442	1,534	80,773	149,349
1968	45,572	2,706	7,106	26,085	81,469	14,986	4,307	86,542	3,241	109,076	190,545
1969	51,372	5,166	3,857	26,612	87,007	15,329	7,195	113,665	1,866	138,055	225,062
1970	55,481	4,606	9,322	29,422	98,831	12,643	4,260	139,385	4,850	161,138	259,969
1971	56,927	5,248	10,840	31,204	104,219	8,013	5,300	104,863	2,482	120,658	224,877
1972	60,251	7,465	11,759	35,749	115,224	16,859	6,060	164,297	1,060	188,276	303,500
1973	61,818	7,458	16,900	41,726	127,902	11,697	3,933	194,200	661	210,491	338,393
1974	57,490	6,582	19,574	46,997	130,643	7,190	8,188	191,626	1,230	208,234	338,877
1975	68,416	7,801	15,386	48,536	140,139	10,640	5,629	183,028	567	199,864	340,003
1976	76,363	17,186	17,076	40,666	151,291	15,632	3,280	215,108	358	234,378	385,669
1977	92,680	15,257	18,509	55,092	181,538	12,355	1,841	184,922	248	199,366	380,904
1978	108,555	12,767	14,260	38,491	174,073	10,188	3,888	158,801	1,103	173,980	348,053
1979	105,065	11,638	31,364	46,375	194,442	11,473	4,789	170,650	212	187,124	381,566
1980	120,373	13,168	35,701	43,906	213,148	13,477	1,481	143,042	862	158,862	372,010
1981	93,125	19,270	62,922	50,622	225,939	7,999	1,477	168,234	800	178,510	404,449
1982	84,014	13,835	74,989	48,226	221,064	10,961	1,538	114,755	280	127,534	348,598
1983	83,662	13,266	109,388	50,844	257,160	10,895	4,007	83,929	849	99,680	356,840
1984	70,258	13,558	118,800	53,698	256,314	10,345	2,991	135,785	344	149,465	405,779
1985	73,966	18,156	106,331	61,091	259,544	13,198	1,070	211,459	212	225,939	485,483
1986	62,614	13,074	110,362	64,673	250,723	22,808	2,537	260,512	214	286,071	536,794
1987	74,092	13,243	158,246	58,032	303,613	18,911	5,107	262,008	138	286,164	589,777
1988	84,802	13,433	99,169	65,704	263,108	14,660	3,723	277,293	752	296,428	559,536
1989	65,523	15,169	163,307	69,867	313,866	17,032	4,145	277,996	263	299,436	613,302
1990	69,493	13,103	179,195	79,196	340,987	34,633	2,676	263,253	960	301,522	642,509
1991	54,278	12,921	218,927	85,997	372,123	30,899	2,856	231,257	958	265,970	638,093
1992	69,198	15,225	239,362	52,899	376,684	18,646	3,789	228,121	1,958	252,514	629,198
1993	63,564	12,698	240,311	50,503	367,076	24,009	4,951	219,492	3,034	251,486	618,562
1994	69,474	13,743	218,335	69,486	371,038	30,026	3,625	208,408	1,487	243,546	614,584
1995	77,311	15,063	187,500	75,935	355,809	20,596	1,268	215,434	2,066	239,364	595,173
1996	74,049	15,479	116,850	80,738	287,116	16,608	3,762	238,607	1,639	260,616	547,732
1997	68,085	12,362	258,941	72,242	411,630	22,163	4,418	244,878	600	272,059	683,689
1998	62,503	13,110	264,862	84,452	424,927	15,336	5,085	253,959	1,529	275,909	700,836
1999	56,161	13,817	206,794	89,230	366,002	11,682	1,783	281,920	2,706	298,091	664,093
2000	66,825	18,179	232,181	88,429	405,614	23,855	2,431	255,231	1,109	282,626	688,240
2001	66,717	14,342	244,478	79,623	405,160	29,608	3,916	382,702	520	416,746	821,906
2002	69,526	13,297	212,552	87,636	383,011	25,531	950	412,507	549	439,537	822,548
2003	74,748	11,278	241,623	88,855	416,504	25,174	470	381,107	1,145	407,896	824,400
2004	75,300	11,787	217,854	78,679	383,620	18,779	1,884	269,597	627	290,887	674,507
2005	66,893	15,401	309,348	72,155	463,797	11,895	1,821	267,599	1,852	283,167	746,964
2006	62,677	13,966	267,742	73,885	418,270	9,117	686	166,330	1,458	177,591	595,861
2007	58,915	13,229	295,613	78,948	446,705	7,625	894	170,264	1,267	180,050	626,755
2008	60,526	11,355	399,720	67,183	538,784	6,722	812	185,087	911	193,532	732,316
2009	77,228	11,141	253,128	74,312	415,809	4,863	709	235,890	987	242,449	658,258
2010	78,561	10,227	303,250	77,770	469,808	3,338	459	251,008	203	255,008	724,816

Table 12. Catches of albacore, bigeye, skipjack and yellowfin in the WCPO

YEAR	ALBACORE		BIGEYE		SKIPJACK		YELLOWFIN		TOTAL
	TONNES	%	TONNES	%	TONNES	%	TONNES	%	
1960	31,463	13	45,025	19	89,938	37	73,667	31	240,093
1961	32,922	11	39,380	13	156,736	51	75,438	25	304,476
1962	37,602	11	36,868	11	181,624	53	83,944	25	340,038
1963	26,815	10	44,346	16	122,703	46	75,756	28	269,620
1964	26,652	8	32,380	10	182,918	58	74,148	23	316,098
1965	28,724	10	31,329	11	155,221	54	73,629	25	288,903
1966	52,180	12	33,152	8	249,512	58	93,068	22	427,912
1967	55,403	15	35,907	10	204,808	56	68,576	19	364,694
1968	61,379	17	29,858	8	194,955	53	81,469	22	367,661
1969	71,137	13	34,156	6	351,046	65	87,007	16	543,346
1970	71,496	11	39,465	6	423,083	67	98,831	16	632,875
1971	96,125	15	41,662	7	380,922	61	104,219	17	622,928
1972	106,697	21	55,458	11	237,798	46	115,224	22	515,177
1973	129,538	20	46,839	7	328,761	52	127,902	20	633,040
1974	112,827	17	48,934	8	356,448	55	130,643	20	648,852
1975	83,864	15	65,223	11	288,762	50	140,139	24	577,988
1976	131,620	18	77,372	11	358,349	50	151,291	21	718,632
1977	79,436	11	76,788	10	405,020	55	181,538	24	742,782
1978	105,771	13	59,094	7	452,373	57	174,073	22	791,311
1979	84,878	11	66,372	9	414,299	55	194,442	26	759,991
1980	94,123	11	65,133	8	459,606	55	213,148	26	832,010
1981	86,385	11	53,346	7	438,259	55	225,939	28	803,929
1982	86,847	10	59,301	7	490,242	57	221,064	26	857,454
1983	64,112	6	59,896	6	683,684	64	257,160	24	1,064,852
1984	73,452	6	64,680	6	762,090	66	256,314	22	1,156,536
1985	76,034	8	68,706	7	603,624	60	259,544	26	1,007,908
1986	71,045	6	63,777	6	755,402	66	250,723	22	1,140,947
1987	60,625	5	79,269	7	687,880	61	303,613	27	1,131,387
1988	62,279	5	68,447	6	849,154	68	263,108	21	1,242,988
1989	69,949	5	77,237	6	823,468	64	313,866	24	1,284,520
1990	61,043	4	89,060	6	901,482	65	340,987	24	1,392,572
1991	56,509	3	71,297	4	1,140,243	70	372,123	23	1,640,172
1992	62,521	4	88,384	6	1,040,180	66	376,684	24	1,567,769
1993	71,762	5	77,506	5	937,322	64	367,076	25	1,453,666
1994	91,754	6	86,943	5	1,043,691	65	371,038	23	1,593,426
1995	89,920	6	79,933	5	1,077,503	67	355,809	22	1,603,165
1996	88,954	6	80,314	5	1,054,137	70	287,116	19	1,510,521
1997	109,867	7	110,399	7	990,910	61	411,630	25	1,622,806
1998	107,403	5	109,974	6	1,341,276	68	424,927	21	1,983,580
1999	127,451	7	112,072	6	1,208,363	67	366,002	20	1,813,888
2000	96,381	5	113,532	6	1,243,796	67	405,614	22	1,859,323
2001	114,599	6	104,824	6	1,139,063	65	405,160	23	1,763,646
2002	140,210	7	120,436	6	1,315,513	67	383,011	20	1,959,170
2003	111,806	6	110,756	6	1,304,160	67	416,504	21	1,943,226
2004	114,629	6	124,762	6	1,400,828	69	383,620	19	2,023,839
2005	97,434	4	115,678	5	1,489,284	69	463,797	21	2,166,193
2006	98,642	4	124,708	6	1,558,296	71	418,270	19	2,199,916
2007	121,653	5	117,693	5	1,670,954	71	446,705	19	2,357,005
2008	97,520	4	132,298	6	1,634,169	68	538,784	22	2,402,771
2009	124,009	5	120,649	5	1,816,092	73	415,809	17	2,476,559
2010	118,791	5	106,650	4	1,696,220	71	469,808	20	2,391,469

Table 13. Catches of albacore, bigeye, skipjack and yellowfin in the EPO

YEAR	ALBACORE		BIGEYE		SKIPJACK		YELLOWFIN		TOTAL
	TONNES	%	TONNES	%	TONNES	%	TONNES	%	
1960	23,292	12	17,746	9	46,059	24	107,968	55	195,065
1961	15,862	6	52,642	21	75,129	30	108,727	43	252,360
1962	22,659	10	45,670	20	77,102	34	78,240	35	223,671
1963	29,799	11	66,757	24	101,931	37	74,706	27	273,193
1964	22,586	10	46,406	20	65,674	28	100,020	43	234,686
1965	17,939	8	29,395	13	84,969	39	88,263	40	220,566
1966	17,938	9	35,302	17	66,307	33	83,888	41	203,435
1967	22,524	8	38,880	14	127,982	47	80,773	30	270,159
1968	26,249	10	39,966	16	77,110	31	109,076	43	252,401
1969	22,646	8	53,164	19	64,894	23	138,055	50	278,759
1970	26,809	9	35,752	13	62,170	22	161,138	56	285,869
1971	24,517	8	34,256	12	112,883	39	120,658	41	292,314
1972	29,548	10	40,225	14	37,504	13	188,276	64	295,553
1973	18,763	6	54,355	16	49,020	15	210,491	63	332,629
1974	25,257	7	38,515	11	87,557	24	208,234	58	359,563
1975	23,051	6	48,343	12	134,732	33	199,864	49	405,990
1976	20,577	4	71,584	15	136,918	30	234,378	51	463,457
1977	24,024	6	85,249	21	94,085	23	199,366	50	402,724
1978	31,108	7	89,198	19	179,665	38	173,980	37	473,951
1979	10,953	3	67,533	17	141,503	35	187,124	46	407,113
1980	11,569	3	86,403	22	138,102	35	158,862	40	394,936
1981	20,283	5	68,344	17	126,001	32	178,510	45	393,138
1982	12,522	4	60,349	20	104,669	34	127,534	42	305,074
1983	15,729	6	64,694	27	61,975	26	99,680	41	242,078
1984	21,857	8	55,268	19	63,611	22	149,465	52	290,201
1985	14,841	4	72,398	20	52,002	14	225,939	62	365,180
1986	11,284	2	105,185	22	67,745	14	286,071	61	470,285
1987	12,977	3	101,347	22	66,466	14	286,164	61	466,954
1988	15,771	3	74,313	16	92,127	19	296,428	62	478,639
1989	9,501	2	72,994	15	98,921	21	299,436	62	480,852
1990	10,850	2	104,851	21	77,107	16	301,522	61	494,330
1991	11,481	3	109,121	24	65,890	15	265,970	59	452,462
1992	23,075	5	92,000	20	87,294	19	252,514	56	454,883
1993	15,605	4	82,190	19	89,919	20	251,486	57	439,200
1994	20,618	5	107,065	24	74,170	17	243,546	55	445,399
1995	14,075	3	104,959	21	134,288	27	239,364	49	492,686
1996	16,112	3	109,017	22	107,841	22	260,616	53	493,586
1997	17,279	3	116,872	21	156,947	28	272,059	48	563,157
1998	25,913	5	91,132	17	142,846	27	275,909	51	535,800
1999	26,464	4	88,146	13	265,203	39	298,091	44	677,904
2000	23,275	4	142,498	22	204,673	31	282,626	43	653,072
2001	33,336	5	129,930	18	145,257	20	416,746	57	725,269
2002	30,154	4	131,876	17	154,299	20	439,537	58	755,866
2003	45,538	5	113,971	13	278,578	33	407,896	48	845,983
2004	40,834	6	111,269	17	201,010	31	290,887	45	644,000
2005	24,564	4	111,283	16	265,091	39	283,167	41	684,105
2006	29,720	5	117,726	19	299,053	48	177,591	28	624,090
2007	27,797	5	93,046	18	209,460	41	180,050	35	510,353
2008	21,311	3	100,692	16	298,365	49	193,532	32	613,900
2009	24,883	4	104,463	17	230,958	38	242,449	40	602,753
2010	7,755	2	80,746	16	147,296	30	255,008	52	490,805

Table 14. Catches of albacore, bigeye, skipjack and yellowfin in the Pacific Ocean

YEAR	ALBACORE		BIGEYE		SKIPJACK		YELLOWFIN		TOTAL
	TONNES	%	TONNES	%	TONNES	%	TONNES	%	
1960	54,755	13	62,771	14	135,997	31	181,635	42	435,158
1961	48,784	9	92,022	17	231,865	42	184,165	33	556,836
1962	60,261	11	82,538	15	258,726	46	162,184	29	563,709
1963	56,614	10	111,103	20	224,634	41	150,462	28	542,813
1964	49,238	9	78,786	14	248,592	45	174,168	32	550,784
1965	46,663	9	60,724	12	240,190	47	161,892	32	509,469
1966	70,118	11	68,454	11	315,819	50	176,956	28	631,347
1967	77,927	12	74,787	12	332,790	52	149,349	24	634,853
1968	87,628	14	69,824	11	272,065	44	190,545	31	620,062
1969	93,783	11	87,320	11	415,940	51	225,062	27	822,105
1970	98,305	11	75,217	8	485,253	53	259,969	28	918,744
1971	120,642	13	75,918	8	493,805	54	224,877	25	915,242
1972	136,245	17	95,683	12	275,302	34	303,500	37	810,730
1973	148,301	15	101,194	10	377,781	39	338,393	35	965,669
1974	138,084	14	87,449	9	444,005	44	338,877	34	1,008,415
1975	106,915	11	113,566	12	423,494	43	340,003	35	983,978
1976	152,197	13	148,956	13	495,267	42	385,669	33	1,182,089
1977	103,460	9	162,037	14	499,105	44	380,904	33	1,145,506
1978	136,879	11	148,292	12	632,038	50	348,053	28	1,265,262
1979	95,831	8	133,905	11	555,802	48	381,566	33	1,167,104
1980	105,692	9	151,536	12	597,708	49	372,010	30	1,226,946
1981	106,668	9	121,690	10	564,260	47	404,449	34	1,197,067
1982	99,369	9	119,650	10	594,911	51	348,598	30	1,162,528
1983	79,841	6	124,590	10	745,659	57	356,840	27	1,306,930
1984	95,309	7	119,948	8	825,701	57	405,779	28	1,446,737
1985	90,875	7	141,104	10	655,626	48	485,483	35	1,373,088
1986	82,329	5	168,962	10	823,147	51	536,794	33	1,611,232
1987	73,602	5	180,616	11	754,346	47	589,777	37	1,598,341
1988	78,050	5	142,760	8	941,281	55	559,536	33	1,721,627
1989	79,450	5	150,231	9	922,389	52	613,302	35	1,765,372
1990	71,893	4	193,911	10	978,589	52	642,509	34	1,886,902
1991	67,990	3	180,418	9	1,206,133	58	638,093	30	2,092,634
1992	85,596	4	180,384	9	1,127,474	56	629,198	31	2,022,652
1993	87,367	5	159,696	8	1,027,241	54	618,562	33	1,892,866
1994	112,372	6	194,008	10	1,117,861	55	614,584	30	2,038,825
1995	103,995	5	184,892	9	1,211,791	58	595,173	28	2,095,851
1996	105,066	5	189,331	9	1,161,978	58	547,732	27	2,004,107
1997	127,146	6	227,271	10	1,147,857	53	683,689	31	2,185,963
1998	133,316	5	201,106	8	1,484,122	59	700,836	28	2,519,380
1999	153,915	6	200,218	8	1,473,566	59	664,093	27	2,491,792
2000	119,656	5	256,030	10	1,448,469	58	688,240	27	2,512,395
2001	147,935	6	234,754	9	1,284,320	52	821,906	33	2,488,915
2002	170,364	6	252,312	9	1,469,812	54	822,548	30	2,715,036
2003	157,344	6	224,727	8	1,582,738	57	824,400	30	2,789,209
2004	155,463	6	236,031	9	1,601,838	60	674,507	25	2,667,839
2005	121,998	4	226,961	8	1,754,375	62	746,964	26	2,850,298
2006	128,362	5	242,434	9	1,857,349	66	595,861	21	2,824,006
2007	149,450	5	210,739	7	1,880,414	66	626,755	22	2,867,358
2008	118,831	4	232,990	8	1,932,534	64	732,316	24	3,016,671
2009	148,892	5	225,112	7	2,047,050	66	658,258	21	3,079,312
2010	126,546	4	187,396	7	1,843,516	64	724,816	25	2,882,274

Table 15. Global catches of albacore, bigeye, skipjack and yellowfin

YEAR	ALBACORE		BIGEYE		SKIPJACK		YELLOWFIN		TOTAL
	TONNES	%	TONNES	%	TONNES	%	TONNES	%	
1960	130,229	20	88,048	13	155,782	23	293,249	44	667,308
1961	118,910	15	124,098	16	253,353	32	284,369	36	780,730
1962	157,011	19	124,222	15	286,687	34	274,099	33	842,019
1963	148,495	18	150,516	19	263,950	33	248,781	31	811,742
1964	159,228	19	120,296	14	287,607	34	277,314	33	844,445
1965	150,677	18	119,244	14	290,750	35	265,353	32	826,024
1966	160,716	17	117,633	13	370,217	39	291,029	31	939,595
1967	175,344	19	124,651	13	391,377	41	254,054	27	945,426
1968	177,358	17	130,898	13	354,614	35	362,147	35	1,025,017
1969	189,979	16	153,301	13	481,767	40	383,838	32	1,208,885
1970	181,735	14	143,005	11	578,403	45	374,803	29	1,277,946
1971	215,282	16	152,623	12	613,925	46	340,053	26	1,321,883
1972	230,934	19	161,257	13	389,030	32	440,137	36	1,221,358
1973	245,471	18	174,093	12	505,570	36	472,677	34	1,397,811
1974	237,374	16	178,185	12	615,370	41	486,652	32	1,517,581
1975	177,870	13	211,011	15	518,999	37	505,940	36	1,413,820
1976	244,303	15	222,139	14	615,413	38	553,889	34	1,635,744
1977	191,415	11	251,504	15	650,821	39	577,373	35	1,671,113
1978	228,259	13	250,437	14	782,297	43	540,018	30	1,801,011
1979	188,252	11	213,388	13	694,087	42	561,038	34	1,656,765
1980	181,267	10	249,639	14	764,193	44	549,925	32	1,745,024
1981	181,202	10	224,134	13	751,539	43	609,197	34	1,766,072
1982	197,399	11	236,400	13	809,155	45	573,003	32	1,815,957
1983	166,887	9	233,713	12	953,917	49	589,173	30	1,943,690
1984	172,108	8	234,562	11	1,066,845	51	628,037	30	2,101,552
1985	177,537	8	271,541	13	916,243	43	767,432	36	2,132,753
1986	203,813	8	291,578	12	1,096,568	45	830,100	34	2,422,059
1987	187,302	8	301,469	12	1,042,926	43	898,028	37	2,429,725
1988	174,642	7	282,757	11	1,287,178	48	911,251	34	2,655,828
1989	163,452	6	297,713	11	1,288,966	47	981,511	36	2,731,642
1990	174,024	6	352,271	12	1,352,884	46	1,077,773	36	2,956,952
1991	153,417	5	353,694	11	1,672,248	52	1,039,287	32	3,218,646
1992	177,065	5	351,527	11	1,584,029	49	1,109,697	34	3,222,318
1993	179,390	5	373,199	11	1,545,411	47	1,173,486	36	3,271,486
1994	208,640	6	436,741	13	1,644,871	48	1,113,405	33	3,403,657
1995	194,617	6	430,537	13	1,712,516	50	1,082,213	32	3,419,883
1996	195,607	6	438,793	13	1,632,254	49	1,044,639	32	3,311,293
1997	214,285	6	484,663	14	1,633,390	47	1,162,082	33	3,494,420
1998	230,234	6	453,464	12	1,976,405	52	1,160,190	30	3,820,293
1999	258,634	7	479,658	12	2,066,265	52	1,160,573	29	3,965,130
2000	228,550	6	489,251	13	2,025,135	52	1,157,082	30	3,900,018
2001	261,576	7	449,368	12	1,872,340	48	1,303,602	34	3,886,886
2002	265,134	6	470,139	11	2,074,429	50	1,303,635	32	4,113,337
2003	245,146	6	446,051	10	2,207,677	51	1,392,448	32	4,291,322
2004	240,655	6	460,712	11	2,220,662	53	1,303,779	31	4,225,808
2005	211,686	5	421,183	9	2,450,149	55	1,354,044	31	4,437,062
2006	225,865	5	426,498	10	2,615,218	60	1,112,748	25	4,380,329
2007	242,681	6	414,392	10	2,480,562	59	1,044,988	25	4,182,623
2008	209,243	5	408,834	10	2,514,646	59	1,158,821	27	4,291,544
2009	208,801	5	400,865	10	2,582,415	61	1,022,493	24	4,214,574
2010	192,944	5	363,149	9	2,378,881	59	1,089,051	27	4,024,025

Table 16. Catches of albacore, bigeye, skipjack and yellowfin by ocean area. Estimates for the Atlantic Ocean for 2009 have been carried over from 2010.

YEAR	WCPO		EPO		ATLANTIC		INDIAN		TOTAL
	TONNES	%	TONNES	%	TONNES	%	TONNES	%	
1960	240,093	36	195,065	29	145,384	22	86,766	13	667,308
1961	304,476	39	252,360	32	135,230	17	88,664	11	780,730
1962	340,038	40	223,671	27	169,697	20	108,613	13	842,019
1963	269,620	33	273,193	34	188,394	23	80,535	10	811,742
1964	316,098	37	234,686	28	201,987	24	91,674	11	844,445
1965	288,903	35	220,566	27	222,199	27	94,356	11	826,024
1966	427,912	46	203,435	22	181,817	19	126,431	13	939,595
1967	364,694	39	270,159	29	184,929	20	125,644	13	945,426
1968	367,661	36	252,401	25	228,017	22	176,938	17	1,025,017
1969	543,346	45	278,759	23	236,694	20	150,086	12	1,208,885
1970	632,875	50	285,869	22	237,191	19	122,011	10	1,277,946
1971	622,928	47	292,314	22	290,958	22	115,683	9	1,321,883
1972	515,177	42	295,553	24	301,937	25	108,691	9	1,221,358
1973	633,040	45	332,629	24	304,880	22	127,262	9	1,397,811
1974	648,852	43	359,563	24	358,304	24	150,862	10	1,517,581
1975	577,988	41	405,990	29	302,119	21	127,723	9	1,413,820
1976	718,632	44	463,457	28	316,778	19	136,877	8	1,635,744
1977	742,782	44	402,724	24	372,569	22	153,038	9	1,671,113
1978	791,311	44	473,951	26	368,658	20	167,091	9	1,801,011
1979	759,991	46	407,113	25	338,014	20	151,647	9	1,656,765
1980	832,010	48	394,936	23	367,602	21	150,476	9	1,745,024
1981	803,929	46	393,138	22	416,733	24	152,272	9	1,766,072
1982	857,454	47	305,074	17	469,190	26	184,239	10	1,815,957
1983	1,064,852	55	242,078	12	430,504	22	206,256	11	1,943,690
1984	1,156,536	55	290,201	14	372,368	18	282,447	13	2,101,552
1985	1,007,908	47	365,180	17	429,982	20	329,683	15	2,132,753
1986	1,140,947	47	470,285	19	423,538	17	387,289	16	2,422,059
1987	1,131,387	47	466,954	19	403,643	17	427,741	18	2,429,725
1988	1,242,988	47	478,639	18	414,430	16	519,771	20	2,655,828
1989	1,284,520	47	480,852	18	424,384	16	541,886	20	2,731,642
1990	1,392,572	47	494,330	17	489,460	17	580,590	20	2,956,952
1991	1,640,172	51	452,462	14	539,051	17	586,961	18	3,218,646
1992	1,567,769	49	454,883	14	503,396	16	696,270	22	3,222,318
1993	1,453,666	44	439,200	13	554,088	17	824,532	25	3,271,486
1994	1,593,426	47	445,399	13	562,096	17	802,736	24	3,403,657
1995	1,603,165	47	492,686	14	514,855	15	809,177	24	3,419,883
1996	1,510,521	46	493,586	15	489,079	15	818,107	25	3,311,293
1997	1,622,806	46	563,157	16	452,083	13	856,374	25	3,494,420
1998	1,983,580	52	535,800	14	469,574	12	831,339	22	3,820,293
1999	1,813,888	46	677,904	17	502,204	13	971,134	24	3,965,130
2000	1,859,323	48	653,072	17	459,662	12	927,961	24	3,900,018
2001	1,763,646	45	725,269	19	484,624	12	913,347	23	3,886,886
2002	1,959,170	48	755,866	18	394,379	10	1,003,922	24	4,113,337
2003	1,943,226	45	845,983	20	424,528	10	1,077,585	25	4,291,322
2004	2,023,839	48	644,000	15	419,111	10	1,138,858	27	4,225,808
2005	2,166,193	49	684,105	15	399,555	9	1,187,209	27	4,437,062
2006	2,199,916	50	624,090	14	383,287	9	1,173,036	27	4,380,329
2007	2,357,005	56	510,353	12	367,237	9	948,028	23	4,182,623
2008	2,402,771	56	613,900	14	368,885	9	905,988	21	4,291,544
2009	2,476,559	59	602,753	14	291,741	7	843,521	20	4,214,574
2010	2,391,469	59	490,805	12	291,741	7	850,010	21	4,024,025

Table 17. Discards (tonnes) by longliners in the WCPFC Statistical Area
(2009 and 2010 data are provisional)

YEAR	ALBACORE			BIGEYE			YELLOWFIN			TOTAL		
	Retained + Discarded	Discarded	%	Retained + Discarded	Discarded	%	Retained + Discarded	Discarded	%	Retained + Discarded	Discarded	%
1994	64,984	5,836	9.0%	79,180	2,399	3.0%	78,615	4,033	5.1%	222,778	12,268	5.5%
1995	63,341	3,097	4.9%	66,896	1,271	1.9%	84,781	4,612	5.4%	215,018	8,980	4.2%
1996	64,503	3,051	4.7%	55,026	1,018	1.9%	78,832	1,167	1.5%	198,361	5,236	2.6%
1997	80,329	8,499	10.6%	68,223	2,668	3.9%	74,017	3,057	4.1%	222,568	14,223	6.4%
1998	89,927	11,106	12.4%	83,995	2,973	3.5%	70,033	2,682	3.8%	243,955	16,762	6.9%
1999	69,598	773	1.1%	72,035	756	1.1%	59,765	1,142	1.9%	201,398	2,670	1.3%
2000	69,850	279	0.4%	70,997	426	0.6%	73,328	572	0.8%	214,175	1,277	0.6%
2001	89,024	4,202	4.7%	74,337	401	0.5%	72,902	445	0.6%	236,263	5,048	2.1%
2002	94,575	4,937	5.2%	90,559	1,404	1.6%	75,776	1,743	2.3%	260,910	8,083	3.1%
2003	79,248	468	0.6%	80,295	1,405	1.8%	80,278	2,007	2.5%	239,821	3,880	1.6%
2004	77,819	2,047	2.6%	92,453	1,424	1.5%	79,378	1,857	2.3%	249,650	5,328	2.1%
2005	80,369	1,366	1.7%	72,757	451	0.6%	71,286	563	0.8%	224,413	2,381	1.1%
2006	84,142	1,161	1.4%	75,906	539	0.7%	68,338	683	1.0%	228,386	2,383	1.0%
2007	80,988	923	1.1%	74,252	297	0.4%	63,254	272	0.4%	218,494	1,492	0.7%
2008	76,370	1,314	1.7%	79,073	925	1.2%	64,935	2,260	3.5%	220,379	4,498	2.0%
2009	92,826	288	0.3%	71,724	402	0.6%	78,949	568	0.7%	243,500	1,258	0.5%
2010	104,764	283	0.3%	58,365	41	0.1%	76,592	528	0.7%	239,721	852	0.4%
Average	80,156	2,919	3.6%	74,475	1,106	1.5%	73,592	1,658	2.3%	228,223	5,684	2.5%

Table 18. Discards (tonnes) by purse seiners in tropical waters of the WCPFC Statistical Area, excluding the domestic fisheries of Indonesia and the Philippines

YEAR	SKIPJACK			YELLOWFIN			BIGEYE			TOTAL		
	Retained + Discarded	Discarded	%	Retained + Discarded	Discarded	%	Retained + Discarded	Discarded	%	Retained + Discarded	Discarded	%
1995	598,120	15,192	2.5%	167,779	2,164	1.3%	5,958	83	1.4%	771,857	17,440	2.3%
1996	637,822	24,110	3.8%	90,234	1,020	1.1%	18,630	667	3.6%	746,686	25,796	3.5%
1997	496,249	17,021	3.4%	216,205	1,189	0.6%	48,959	597	1.2%	761,412	18,808	2.5%
1998	765,593	27,025	3.5%	236,197	3,496	1.5%	19,779	206	1.0%	1,021,569	30,727	3.0%
1999	685,394	25,634	3.7%	176,157	2,871	1.6%	25,474	537	2.1%	887,024	29,043	3.3%
2000	759,977	39,899	5.3%	160,733	964	0.6%	18,230	551	3.0%	938,940	41,414	4.4%
2001	734,593	52,156	7.1%	189,504	1,213	0.6%	19,792	445	2.3%	943,890	53,814	5.7%
2002	907,318	28,399	3.1%	139,649	1,578	1.1%	19,744	259	1.3%	1,066,711	30,236	2.8%
2003	822,598	31,012	3.8%	179,257	3,012	1.7%	17,448	248	1.4%	1,019,303	34,271	3.4%
2004	957,930	45,214	4.7%	126,472	2,934	2.3%	21,204	814	3.8%	1,105,606	48,963	4.4%
2005	1,001,347	52,270	5.2%	207,658	4,444	2.1%	27,625	1,395	5.1%	1,236,630	58,109	4.7%
2006	1,057,564	33,419	3.2%	158,579	2,870	1.8%	25,191	330	1.3%	1,241,334	36,619	2.9%
2007	1,161,491	47,040	4.1%	183,311	2,878	1.6%	23,809	362	1.5%	1,368,610	50,280	3.7%
2008	1,068,551	21,478	2.0%	289,219	2,574	0.9%	32,951	679	2.1%	1,390,721	24,731	1.8%
2009	1,337,576	36,248	2.7%	180,586	1,553	0.9%	33,502	576	1.7%	1,551,664	38,378	2.5%
2010	1,205,214	21,694	1.8%	275,236	1,927	0.7%	30,492	244	0.8%	1,510,942	23,864	1.6%
Average	887,334	32,363	3.6%	186,048	2,293	1.2%	24,299	500	2.1%	1,097,681	35,156	3.2%

Table 19. Commercial catches of billfish in the WCPFC Statistical Area, by gear type and species

YEAR	LONGLINE					PURSE SEINE		
	BLUE MARLIN	BLACK MARLIN	STRIPED MARLIN	SWORD-FISH	SUB-TOTAL	BLUE MARLIN	BLACK MARLIN	SUB-TOTAL
1962	14,197	2,091	15,207	10,354	41,849	0	0	0
1963	11,583	2,100	12,384	9,741	35,808	0	0	0
1964	10,240	1,697	17,023	5,942	34,902	0	0	0
1965	8,303	2,260	13,298	8,176	32,037	0	0	0
1966	8,763	2,408	9,648	9,821	30,640	0	0	0
1967	7,287	2,362	11,506	10,643	31,798	0	0	0
1968	6,673	2,951	11,783	9,504	30,911	0	1	1
1969	7,091	2,619	8,500	8,945	27,155	0	1	1
1970	9,977	3,544	7,594	7,578	28,693	6	14	20
1971	6,450	3,776	6,373	8,615	25,214	8	19	27
1972	7,957	3,696	5,194	8,110	24,957	9	20	29
1973	7,483	3,793	5,550	7,303	24,129	14	31	45
1974	7,253	3,115	4,788	7,990	23,146	7	17	24
1975	7,079	3,281	3,764	8,519	22,643	7	17	24
1976	6,710	2,242	3,497	9,955	22,404	6	16	22
1977	7,020	2,427	2,948	9,583	21,978	9	21	30
1978	8,861	2,787	3,744	9,871	25,263	8	20	28
1979	9,414	2,395	5,059	11,178	28,046	13	29	42
1980	10,245	1,552	4,823	8,740	25,360	13	29	42
1981	10,332	2,009	4,773	10,111	27,225	30	60	90
1982	10,398	2,023	4,536	9,214	26,171	42	90	132
1983	9,005	1,741	3,476	10,108	24,330	67	132	199
1984	12,197	1,317	4,836	9,975	28,325	86	161	247
1985	9,667	1,048	5,509	12,415	28,639	69	137	206
1986	10,348	1,121	6,175	11,473	29,117	66	128	194
1987	14,403	1,533	5,558	12,930	34,424	73	145	218
1988	14,553	2,294	7,613	12,804	37,264	71	142	213
1989	11,893	1,207	6,646	10,695	30,441	86	169	255
1990	10,200	1,120	4,871	11,470	27,661	95	184	279
1991	10,842	1,449	5,237	12,713	30,241	135	253	388
1992	13,302	1,650	5,363	18,322	38,637	141	241	382
1993	15,854	1,428	10,600	19,637	47,519	142	246	388
1994	15,609	1,844	6,189	17,057	40,699	141	239	380
1995	18,044	1,335	7,189	15,714	42,282	144	242	386
1996	14,526	945	5,834	15,177	36,482	160	263	423
1997	12,544	964	5,010	18,175	36,693	179	270	449
1998	16,449	1,545	7,080	19,299	44,373	182	267	449
1999	14,573	1,927	5,882	20,539	42,921	153	235	388
2000	13,474	1,144	4,264	20,961	39,843	184	273	457
2001	15,243	1,338	4,779	18,020	39,380	189	257	446
2002	15,165	1,625	4,375	18,606	39,771	205	278	483
2003	23,833	1,862	5,364	19,955	51,014	214	283	497
2004	21,361	2,061	5,085	21,561	50,068	226	293	519
2005	19,622	2,483	4,277	19,353	45,735	848	628	1,476
2006	17,287	2,179	4,014	21,890	45,370	611	399	1,010
2007	14,508	1,527	3,403	24,428	43,866	824	268	1,092
2008	14,197	1,586	3,405	21,983	41,171	592	442	1,034
2009	14,171	1,707	2,776	19,115	37,769	609	382	991
2010	15,184	2,029	2,435	17,566	37,214	764	508	1,272

Table 19 continued

YEAR	OTHER COMMERCIAL GEARS					TOTAL
	BLUE MARLIN	BLACK MARLIN	STRIPED MARLIN	SWORD-FISH	SUB-TOTAL	
1962	1,023	65	0	38	1,126	42,975
1963	1,084	69	0	41	1,194	37,002
1964	1,187	73	2,366	1,203	4,829	39,731
1965	1,283	77	2,790	2,118	6,268	38,305
1966	1,379	82	1,676	1,934	5,071	35,711
1967	1,497	87	1,641	1,161	4,386	36,184
1968	1,528	92	1,255	1,883	4,758	35,670
1969	1,745	98	2,625	1,673	6,141	33,297
1970	1,850	125	1,184	1,895	5,054	33,767
1971	2,064	140	2,284	617	5,105	30,346
1972	2,154	146	1,369	436	4,105	29,091
1973	2,877	174	4,011	972	8,034	32,208
1974	3,238	201	3,930	1,789	9,158	32,328
1975	3,986	206	7,255	3,072	14,519	37,186
1976	3,603	175	4,163	4,138	12,079	34,505
1977	4,858	243	4,980	2,802	12,883	34,891
1978	3,604	156	6,035	2,855	12,650	37,941
1979	3,681	196	3,058	1,368	8,303	36,391
1980	3,631	177	4,008	2,308	10,124	35,526
1981	4,245	195	4,410	2,201	11,051	38,366
1982	3,904	175	2,997	1,643	8,719	35,022
1983	4,243	194	2,667	1,386	8,490	33,019
1984	3,536	211	3,060	1,420	8,227	36,799
1985	4,205	257	3,116	1,540	9,118	37,963
1986	4,045	268	4,181	1,633	10,127	39,438
1987	3,164	195	2,399	1,317	7,075	41,717
1988	3,750	222	2,880	1,552	8,404	45,881
1989	4,059	241	2,211	2,115	8,626	39,322
1990	5,251	342	2,489	1,388	9,470	37,410
1991	5,837	388	1,839	883	8,947	39,576
1992	3,046	218	1,515	1,393	6,172	45,191
1993	3,182	221	1,267	747	5,417	53,324
1994	4,673	289	1,824	924	7,710	48,789
1995	5,254	330	1,248	1,203	8,035	50,703
1996	5,688	339	912	1,260	8,199	45,104
1997	2,212	120	1,017	830	4,179	41,321
1998	2,365	138	1,421	1,082	5,006	49,828
1999	2,391	141	1,340	1,256	5,128	48,437
2000	1,558	96	1,380	1,404	4,438	44,738
2001	1,592	90	1,370	1,050	4,102	43,928
2002	1,611	99	1,587	1,452	4,749	45,003
2003	1,805	122	1,261	1,440	4,628	56,139
2004	1,937	126	1,466	1,383	4,912	55,499
2005	2,057	129	1,334	1,542	5,062	52,273
2006	2,116	142	1,308	1,447	5,013	51,393
2007	2,353	161	1,083	1,389	4,986	49,944
2008	3,784	186	1,430	1,218	6,618	48,823
2009	2,569	126	947	1,200	4,842	43,602
2010	2,593	126	942	1,195	4,856	43,342

Table 20. Commercial catches of billfish in the WCPFC Statistical Area, by species

YEAR	BLUE MARLIN		BLACK MARLIN		STRIPED MARLIN		SWORDFISH		TOTAL
	TONNES	%	TONNES	%	TONNES	%	TONNES	%	
1962	15,220	35	2,156	5	15,207	35	10,392	24	42,975
1963	12,667	34	2,169	6	12,384	33	9,782	26	37,002
1964	11,427	29	1,770	4	19,389	49	7,145	18	39,731
1965	9,586	25	2,337	6	16,088	42	10,294	27	38,305
1966	10,142	28	2,490	7	11,324	32	11,755	33	35,711
1967	8,784	24	2,449	7	13,147	36	11,804	33	36,184
1968	8,201	23	3,044	9	13,038	37	11,387	32	35,670
1969	8,836	27	2,718	8	11,125	33	10,618	32	33,297
1970	11,833	35	3,683	11	8,778	26	9,473	28	33,767
1971	8,522	28	3,935	13	8,657	29	9,232	30	30,346
1972	10,120	35	3,862	13	6,563	23	8,546	29	29,091
1973	10,374	32	3,998	12	9,561	30	8,275	26	32,208
1974	10,498	32	3,333	10	8,718	27	9,779	30	32,328
1975	11,072	30	3,504	9	11,019	30	11,591	31	37,186
1976	10,319	30	2,433	7	7,660	22	14,093	41	34,505
1977	11,887	34	2,691	8	7,928	23	12,385	35	34,891
1978	12,473	33	2,963	8	9,779	26	12,726	34	37,941
1979	13,108	36	2,620	7	8,117	22	12,546	34	36,391
1980	13,889	39	1,758	5	8,831	25	11,048	31	35,526
1981	14,607	38	2,264	6	9,183	24	12,312	32	38,366
1982	14,344	41	2,288	7	7,533	22	10,857	31	35,022
1983	13,315	40	2,067	6	6,143	19	11,494	35	33,019
1984	15,819	43	1,689	5	7,896	21	11,395	31	36,799
1985	13,941	37	1,442	4	8,625	23	13,955	37	37,963
1986	14,459	37	1,517	4	10,356	26	13,106	33	39,438
1987	17,640	42	1,873	4	7,957	19	14,247	34	41,717
1988	18,374	40	2,658	6	10,493	23	14,356	31	45,881
1989	16,038	41	1,617	4	8,857	23	12,810	33	39,322
1990	15,546	42	1,646	4	7,360	20	12,858	34	37,410
1991	16,814	42	2,090	5	7,076	18	13,596	34	39,576
1992	16,489	36	2,109	5	6,878	15	19,715	44	45,191
1993	19,178	36	1,895	4	11,867	22	20,384	38	53,324
1994	20,423	42	2,372	5	8,013	16	17,981	37	48,789
1995	23,442	46	1,907	4	8,437	17	16,917	33	50,703
1996	20,374	45	1,547	3	6,746	15	16,437	36	45,104
1997	14,935	36	1,354	3	6,027	15	19,005	46	41,321
1998	18,996	38	1,950	4	8,501	17	20,381	41	49,828
1999	17,117	35	2,303	5	7,222	15	21,795	45	48,437
2000	15,216	34	1,513	3	5,644	13	22,365	50	44,738
2001	17,024	39	1,685	4	6,149	14	19,070	43	43,928
2002	16,981	38	2,002	4	5,962	13	20,058	45	45,003
2003	25,852	46	2,267	4	6,625	12	21,395	38	56,139
2004	23,524	42	2,480	4	6,551	12	22,944	41	55,499
2005	22,527	43	3,240	6	5,611	11	20,895	40	52,273
2006	20,014	39	2,720	5	5,322	10	23,337	45	51,393
2007	17,685	35	1,956	4	4,486	9	25,817	52	49,944
2008	18,573	38	2,214	5	4,835	10	23,201	48	48,823
2009	17,349	40	2,215	5	3,723	9	20,315	47	43,602
2010	18,541	43	2,663	6	3,377	8	18,761	43	43,342

Table 21. Commercial catches of striped marlin and swordfish in the WCPFC Statistical Area north of the equator

YEAR	STRIPED MARLIN		SWORDFISH		TOTAL
	TONNES	%	TONNES	%	
1962	12,165	55	9,857	45	22,022
1963	9,550	51	9,029	49	18,579
1964	17,913	73	6,745	27	24,658
1965	14,194	60	9,377	40	23,571
1966	9,099	46	10,676	54	19,775
1967	11,802	52	10,920	48	22,722
1968	11,903	54	10,083	46	21,986
1969	10,107	51	9,694	49	19,801
1970	7,574	47	8,517	53	16,091
1971	6,572	47	7,290	53	13,862
1972	4,550	41	6,606	59	11,156
1973	7,496	53	6,769	47	14,265
1974	7,044	47	7,816	53	14,860
1975	9,788	48	10,406	52	20,194
1976	6,222	34	11,904	66	18,126
1977	7,021	38	11,643	62	18,664
1978	8,399	41	11,853	59	20,252
1979	6,605	37	11,011	63	17,616
1980	7,702	45	9,326	55	17,028
1981	7,200	42	10,047	58	17,247
1982	5,315	38	8,625	62	13,940
1983	4,948	33	10,133	67	15,081
1984	6,491	40	9,776	60	16,267
1985	7,312	38	11,990	62	19,302
1986	9,294	45	11,168	55	20,462
1987	6,629	36	11,903	64	18,532
1988	8,659	45	10,697	55	19,356
1989	6,510	39	10,262	61	16,772
1990	5,816	36	10,315	64	16,131
1991	5,769	34	11,179	66	16,948
1992	5,521	26	15,817	74	21,338
1993	10,364	37	17,600	63	27,964
1994	6,025	29	14,760	71	20,785
1995	6,550	32	13,962	68	20,512
1996	5,059	29	12,522	71	17,581
1997	4,329	24	13,694	76	18,023
1998	5,679	29	14,073	71	19,752
1999	4,936	25	15,022	75	19,958
2000	4,047	20	15,916	80	19,963
2001	4,331	25	12,794	75	17,125
2002	3,743	22	12,967	78	16,710
2003	3,962	21	14,468	79	18,430
2004	3,970	22	14,295	78	18,265
2005	3,466	21	13,081	79	16,547
2006	3,280	19	13,651	81	16,931
2007	2,680	16	14,303	84	16,983
2008	3,055	20	12,472	80	15,527
2009	2,074	15	11,722	85	13,796
2010	2,075	15	11,929	85	14,004

Table 22. Commercial catches of striped marlin and swordfish in the WCPFC Statistical Area south of the equator

YEAR	STRIPED MARLIN		SWORDFISH		TOTAL
	TONNES	%	TONNES	%	
1962	3,042	85	535	15	3,577
1963	2,834	79	753	21	3,587
1964	1,473	79	397	21	1,870
1965	1,890	67	914	33	2,804
1966	2,139	67	1,044	33	3,183
1967	1,345	60	884	40	2,229
1968	1,135	47	1,304	53	2,439
1969	1,018	52	924	48	1,942
1970	1,204	56	956	44	2,160
1971	2,085	52	1,942	48	4,027
1972	2,013	51	1,940	49	3,953
1973	2,065	58	1,506	42	3,571
1974	1,674	46	1,963	54	3,637
1975	1,230	51	1,185	49	2,415
1976	1,438	40	2,189	60	3,627
1977	906	55	741	45	1,647
1978	1,380	61	873	39	2,253
1979	1,512	50	1,535	50	3,047
1980	1,129	40	1,722	60	2,851
1981	1,983	47	2,265	53	4,248
1982	2,219	50	2,232	50	4,451
1983	1,195	47	1,361	53	2,556
1984	1,406	46	1,619	54	3,025
1985	1,313	40	1,966	60	3,279
1986	1,060	35	1,938	65	2,998
1987	1,328	36	2,344	64	3,672
1988	1,833	33	3,655	67	5,488
1989	2,344	48	2,548	52	4,892
1990	1,535	38	2,543	62	4,078
1991	1,288	35	2,417	65	3,705
1992	1,305	25	3,898	75	5,203
1993	1,503	35	2,783	65	4,286
1994	1,988	38	3,230	62	5,218
1995	1,886	39	2,956	61	4,842
1996	1,687	30	3,915	70	5,602
1997	1,698	24	5,311	76	7,009
1998	2,761	30	6,309	70	9,070
1999	2,285	25	6,773	75	9,058
2000	1,597	20	6,449	80	8,046
2001	1,818	22	6,275	78	8,093
2002	2,219	24	7,091	76	9,310
2003	2,663	28	6,927	72	9,590
2004	2,453	23	8,045	77	10,498
2005	1,816	21	6,722	79	8,538
2006	1,795	17	8,925	83	10,720
2007	1,730	14	10,678	86	12,408
2008	1,867	15	10,450	85	12,317
2009	1,829	17	9,014	83	10,843
2010	1,751	16	9,158	84	10,909

Table 23. Commercial catches of albacore, striped marlin and swordfish in the South Pacific Ocean

YEAR	ALBACORE		STRIPED MARLIN		SWORDFISH		TOTAL
	TONNES	%	TONNES	%	TONNES	%	
1962	35,219	100	0	0	0	0	35,219
1963	31,111	100	0	0	0	0	31,111
1964	22,824	100	3	0	3	0	22,830
1965	25,455	100	4	0	3	0	25,462
1966	38,661	100	86	0	35	0	38,782
1967	43,957	99	191	0	50	0	44,198
1968	32,382	99	229	1	106	0	32,717
1969	24,805	99	106	0	31	0	24,942
1970	34,925	99	261	1	40	0	35,226
1971	38,630	83	5,237	11	2,451	5	46,318
1972	39,521	85	4,307	9	2,604	6	46,432
1973	47,330	89	3,395	6	2,727	5	53,452
1974	34,049	86	3,042	8	2,556	6	39,647
1975	23,600	84	2,629	9	1,935	7	28,164
1976	29,082	80	3,919	11	3,398	9	36,399
1977	38,740	88	2,797	6	2,305	5	43,842
1978	34,676	86	2,827	7	2,670	7	40,173
1979	27,076	80	3,966	12	2,636	8	33,678
1980	32,541	83	3,533	9	3,322	8	39,396
1981	34,784	80	4,843	11	3,632	8	43,259
1982	30,788	79	4,719	12	3,312	9	38,819
1983	25,092	81	3,153	10	2,766	9	31,011
1984	24,704	83	2,447	8	2,641	9	29,792
1985	32,328	87	2,235	6	2,642	7	37,205
1986	36,590	86	2,722	6	3,293	8	42,605
1987	25,052	75	4,170	13	4,132	12	33,354
1988	37,867	80	3,657	8	5,717	12	47,241
1989	49,076	87	3,985	7	3,627	6	56,688
1990	34,126	81	3,658	9	4,507	11	42,291
1991	32,693	81	3,031	8	4,509	11	40,233
1992	37,246	79	3,070	7	6,884	15	47,200
1993	34,669	81	3,254	8	4,892	11	42,815
1994	41,438	82	3,866	8	5,199	10	50,503
1995	37,291	83	3,199	7	4,638	10	45,128
1996	31,381	78	3,420	9	5,279	13	40,080
1997	31,936	74	3,699	9	7,249	17	42,884
1998	44,192	78	4,469	8	8,328	15	56,989
1999	35,540	77	2,906	6	7,791	17	46,237
2000	40,478	81	2,086	4	7,601	15	50,165
2001	54,016	83	2,672	4	8,648	13	65,336
2002	65,332	84	3,082	4	9,550	12	77,964
2003	62,523	83	3,443	5	9,578	13	75,544
2004	62,616	77	2,886	4	15,536	19	81,038
2005	61,292	79	2,530	3	13,874	18	77,696
2006	64,660	79	2,462	3	15,128	18	82,250
2007	58,749	77	2,214	3	15,562	20	76,525
2008	60,021	76	2,242	3	16,751	21	79,014
2009	76,195	79	2,193	2	18,179	19	96,567
2010	81,217	80	2,038	2	18,890	18	102,145