



TECHNICAL AND COMPLIANCE COMMITTEE

Tenth Regular Session

25 – 30 September 2014

Pohnpei, Federated States of Micronesia

ANNUAL REPORT FOR THE WCPFC RECORD OF FISHING VESSELS

WCPFC-TCC10-2014-RP05_rev1¹

22 September 2014

Paper prepared by the Secretariat

Introduction

1. The Record of Fishing Vessels (RFV) was established pursuant to Article 24 (paragraphs 4 – 7) of the WCPF Convention. The RFV is a publicly accessible list through the WCPFC website, providing a combined list of CCMs vessels that are entitled to fly its flag and are authorized to be used for fishing in the Convention Area beyond areas of national jurisdiction. The WCPFC Secretariat maintains the Record of Fishing Vessels (RFV) on behalf of the members of the Commission.
2. This paper is an annual summary of information contained within the RFV and the operation of the RFV, and it is provided in accordance with paragraph 15 of CMM 2013-10, *WCPFC Record of Fishing Vessels and Authorization to Fish* and paragraph 14 of CMM 2013-03, *Standards, Specifications and Procedures for the Western and Central Pacific Fisheries Commission Record of Fishing Vessels* (RFV SSPs). This report provides:
 - A general overview of current information in the RFV;
 - A report on the implementation of the RFV SSPs (CMM 2013-03), including draft recommended amendments to CMM 2013-03 (see Annex6);
 - Administration notes about the RFV, including notes on collaboration on RFV-matters with subregional and international organisations.
 - Recommendations at paragraphs 19, 23, 26 and 36.

Overview of current information in the WCPFC Record of Fishing Vessels

4. The WCPFC RFV is a combined list of all the details that each Member and Cooperating Non-Member has provided to the WCPFC Secretariat of its vessels that are authorized to fish beyond its national jurisdiction within the Convention Area (it is made up of the details of each vessel that is on a particular Members or Cooperating Non-Members national record of fishing vessels maintained in accordance with Article 24 of the WCPF Convention). During 2014, there were significant changes to the specifications and procedures used by CCMs to advise the Secretariat of updates to the RFV (as a result of the implementation of CMM

¹ Includes corrections to reflect WCPFC Circular 2014/79: changes have been made to paragraph 5, 8, 13 vii., 18 and 19, Annex 6 *DRAFT Proposed Amendments to CMM 2013-03 RFV SSPs*

2013-03). The Secretariat is required to maintain the RFV and ensure due publicity is given to the record, including making its contents available through an appropriate website. The RFV is available publicly on the WCPFC website at <http://www.wcpfc.int/record-fishing-vessel-database>

- As at 5 September 2014, 28 CCMs (including five CNMs) have submitted 6049 records of their respective fishing vessels to the Executive Director.² These cover small, medium and large-scale tuna fishing vessels, vessels targeting tuna and other species, support vessels, and research and training vessels. Figure 1 below show the percentage of vessels on the RFV by vessel type and Annex 1 provides a summary of the vessels currently on the RFV by CCM. Figure 2 shows the total number of vessels (6049) currently on the RFV by vessel type. Annex 5 provides information on the purse seiners and longliners on the RFV by Year Built.

Figure 1: % of vessels in the RFV by vessel type, as at 5 Sept 2014³ (

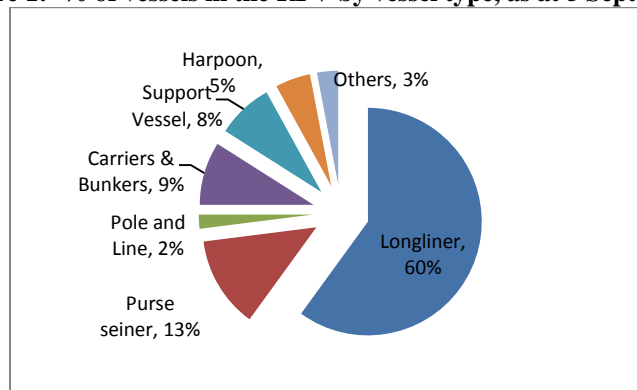
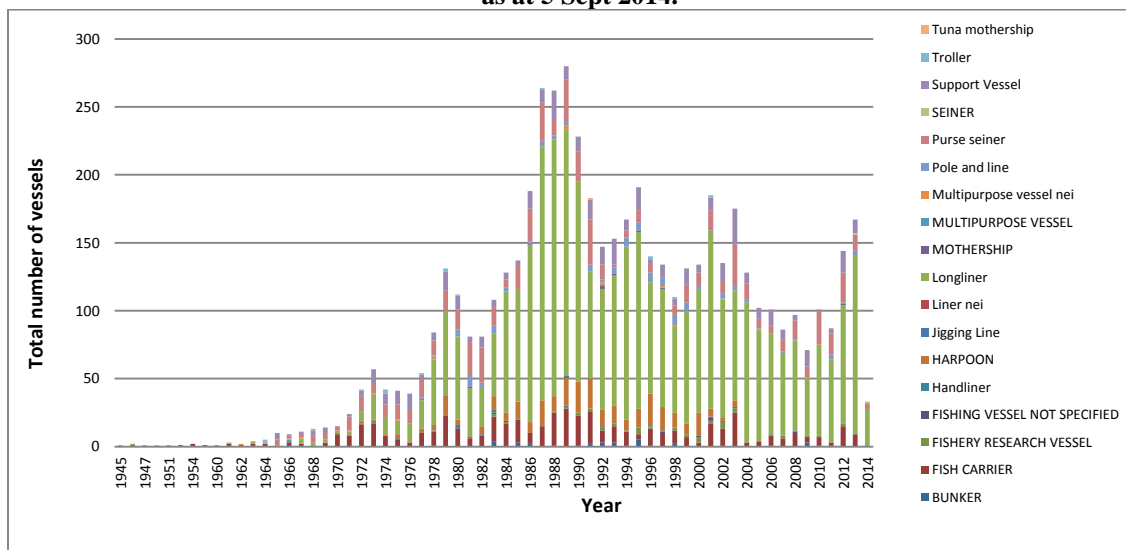


Figure 2: Total number of vessels currently on the RFV by Vessel Type and Year Built as at 5 Sept 2014.⁴



² One (1) of these vessels on the RFV is considered to be nominations of non-CCM vessels made by Members in accordance with paras 42 – 44 of CMM 2013-10.

³ Note: Longliner = tuna longliner and longliner vessel types; and purse seiner = tuna purse seiner and purse seiner vessel types

⁴ There are 448 vessels currently on the RFV which do not have the year built field completed (7 % of total vessels on the RFV) and 19 vessels which do not have the vessel type field completed.

2013 Fished or Did Not Fish Report

6. In accordance with paragraph 9 of CMM 2013-10, before 1 July of every year, each member shall submit to the Executive Director a list of all vessels that appeared in its record of fishing vessels at any time during the preceding calendar year, together with each vessel's WCPFC identification number (WIN) and an indication of whether each vessel fished for highly migratory fish stocks in the Convention Area beyond its area of national jurisdiction. The indication shall be expressed as (a) fished, or (b) did not fish. Since 2011, the Secretariat has provided CCMs each year with an Excel spreadsheet template to assist them in submitting their reports. The template provides CCMs with a list of their flagged vessels on the RFV and the option of choosing "fished" or "did not fish" from a drop down menu, and it also has the advantage in that it provides the WCPFC Secretariat with a report that can be automatically loaded into the WCPFC RFV database.
7. As at 5 September 2014, 28 CCMs (including 5 CNMs) have submitted their fished or did not fish reports for 2013 calendar year. The timeliness of submission of this report has improved significantly this year compared to past years with 26 of the 28 reports received on time: one CCM is yet to submit a fished and did not fish report for 2013 calendar year. The fished and did not fish reports are an important piece of information that assists the Secretariat in reviewing the applicability of certain CMMs through the Compliance Monitoring Report Scheme process (CMM 2013-02). Annex 2 provides a summary of reporting by CCMs in their fished or did not fish report covering 2013 activities.

Notes on Implementation of the RFV SSPs (CMM 2013-03)

8. In December 2013, WCPFC10 adopted CMM 2013-03, *Standards, Specifications and Procedures for the Western and Central Pacific Fisheries Commission Record of Fishing Vessels*. In accordance with CMM 2013-03 the RFV SSPs came into effect on 6 June 2014, and the delivery by the WCPFC Secretariat of the necessary changes to the RFV was within the required timeframes in the CMM.⁵ On 22 September 2014, the Secretariat issued a revision of CMM 2013-03, to correct the omission the footnote to paragraph 12 (WCPFC Circular 2014/79)
9. The stated objectives of the RFV SSPs, as outlined in the supporting documentation to the proposal which became CMM 2013-03, was to ensure that:
 - a. the RFV is maintained in a manner that maximizes its utility as a management tool for the WCPFC and its CCMs;
 - b. the information in the WCPFC RFV is complete, up-to-date, accurate, unambiguous, and comparable across flag States;
 - c. the maintenance of the RFV is as cost-effective as possible for CCMs and the Secretariat; and

⁵ 6th June 2014 was six months after the adoption of CMM 2013-03 at the WCPFC10. WCPFC Circular No.: 2014/43, dated 28 May 2014, confirmed the dates of implementation by the Secretariat: CCMs were provided a facility for direct data entry using the online portal by 2 June; and CCMs could begin to submit MS Excel file submissions to the Secretariat before 7 June.

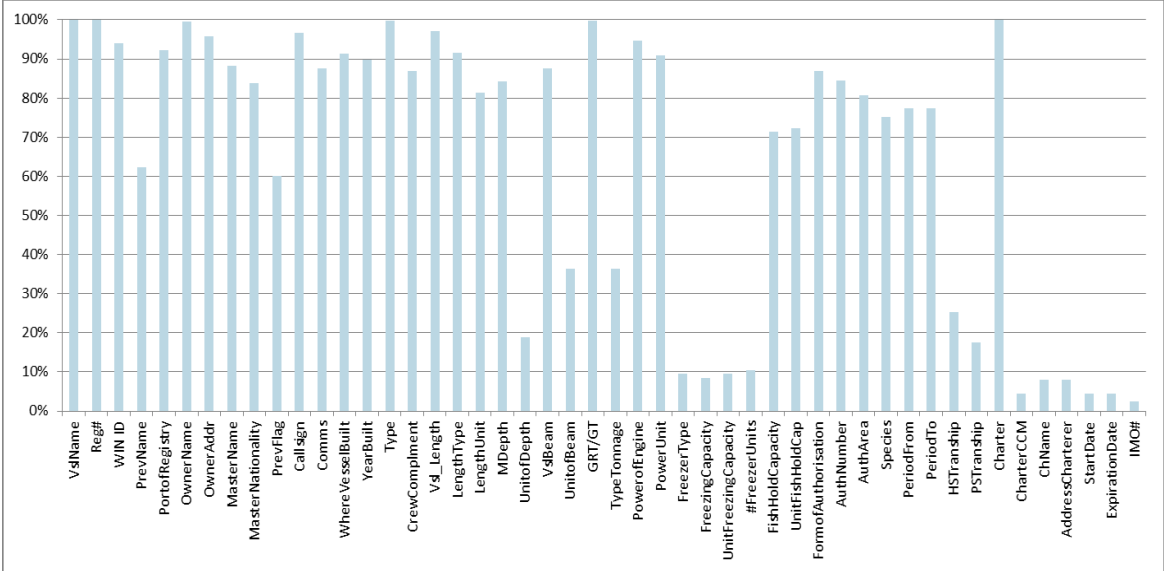
- d. there is a standardized structure and format for the RFV, specifications for certain of the required vessel information, procedures to be used by CCMs in submitting vessel information for the RFV, and procedures to be used by the WCPFC Secretariat in maintaining the RFV.
10. The responsibilities of CCMs are stipulated in paragraphs 2 and 3 of CMM 2013-03. CCMs currently can submit vessel record data via one of two modes (CMM 2013-03 para 3):
 - a. *Electronic transmission: Submittal via email or other electronic means of electronic data files that meet the electronic formatting specifications of Attachment 3; or*
 - b. *Manual transmission: Direct RFV data entry via the web portal maintained by the WCPFC Secretariat for this purpose (Attachment 4).*
11. The Secretariat's responsibilities are stated in paragraphs 4 – 15 of CMM 2013-03. The Secretariat has implemented option 3(b), through the online system at WCPFC Intranet: <https://intra.wcpfc.int/Lists/Vessels/Active%20Vessels%20by%20CCM.aspx> and a specific RFV-CCM user account and password are required (available from the WCPFC Secretariat). In addition to the quick guide that was provided to CCMs via circular, a detailed CCM user guide *Managing RFV Online version 1-2* is provided on the intranet to assist CCMs with making their updates to the RFV, using this option. The implementation of option 3(a) has also been delivered for the MS Excel file option (to date no MS Access files have been received from CCMs, and if received would be converted into a MS Excel file format before being processed).
12. The RFV SSPs say in paragraph 1 (b and d) that the RFV is to, at minimum, be “fully and readily searchable by public users” and “includes electronic photographs of the vessels”. Noting these requirements in early June 2014 as part of the RFV-SSPs implementation the WCPFC Secretariat launched a public-user searchable version of the WCPFC Record of Fishing Vessels on the WCPFC website (<http://www.wcpfc.int/record-fishing-vessel-database>). The website RFV version only displays the current vessels (not those that have been deleted), and excludes RFV fields that are classed as non-public domain data. The website RFV also includes the ability for CCMs to download a CSV export of the publicly displayed fields for a subset or for the whole RFV. CCMs can access the full version of the RFV, which includes access to the “non-public domain” fields and information such as version history, through the Intranet, and using their CCM-specific user name and login.
13. Some observations from the Secretariat on the implementation of the RFV SSPs (CMM2013-03) to date:
 - i. From 2 June to 5 September 2014, 22 CCMs have updated (added/modified/deleted) 2044 vessels details in the RFV.⁶ Approximately 29% of these vessels were updated by CCMs submitting updates using the option in CMM 2013-03 paragraph 3(a) which is transmission of Excel files to the Secretariat. The rest of the vessels (71%) have been updated by CCMs using the direct data entry mode (paragraph 3(b)).
 - ii. The direct data entry mode continues to work well for many CCMs and is the most frequently used option. This seems to be the preferred option, especially when there

⁶ AU, BZ, CN, CK, EC, SV, EU, FM, FJ, JP, KI, KR, MH, NC, NZ, PA, PG, PH, TW US, VU, VN

- are only a small number of vessels whose RFV details need updating, and if there is some urgency to publish updates to the WCPFC RFV.
- iii. CCMs have expressed their appreciation that once updates to their existing RFV listed vessels are entered and accepted by the WCPFC system (through the 3(b) online web portal form which takes into account the minimum required fields in CMM 2013-03) these updates are instantaneously reflected on the RFV and without any intervention from the Secretariat.
 - iv. To date, the Secretariat has received and successfully uploaded Excel files from 4 CCMs (Australia, Korea, Panama, Chinese Taipei, and United States), and the Secretariat has worked with at least two more CCMs to refine their MS Excel spreadsheet submissions but these CCMs have chosen to instead use the online web portal for their RFV updates.
 - v. Until a CCM has perfected their Excel file generation technique to fully meet the requirements of the RFV SSPs (CMM 2013-03), the submission of Excel files for RFV updates can at times be a technical challenge for the CCM and the Secretariat. CCMs are reminded to carefully follow the “Field description/instructions” shown in Attachment 1 of CMM 2013-03 when preparing their Excel files for submission. Until such time as a CCM has perfected their MS Excel files, the only option that these CCMs have for updating their vessels details in the RFV is through the direct CCM portal option.
 - vi. A few CCMs appear to be using both methods of updating the RFV, and the Secretariat has observed that some of the possible considerations in this alternating of modes, may depend on the number of records to be updated and/or how quickly the updates need to be reflected in the public version of the RFV.
 - vii. Some CCMs appear to have made best efforts, once CMM 2013-03 took effect, to submit all fields as provided in the RFV-SSPs, whereas other CCMs seem to be implementing the WCPFC RFV on an as-needed basis (when there are specific updates to its vessels), and generally only submitting the minimum required fields. This differing approach amongst CCMs may be in part due to the omission of the footnote to paragraph 12 from version of CMM 2013-03 published post-WCPFC10. A corrected version of CMM 2013-03 was issued by the Secretariat on 22 September 2014 (WCPFC Circular 2014/79).
14. The Secretariat, in close collaboration with CCMs, has to date been able to meet the timeframes specified in paragraphs 11 and 12 of CMM 2013-03. The Secretariat has and will continue to provide assistance to any CCMs wishing to submit RFV updates using the MS Excel file option, and can on request provide CCMs with a template that includes all fields and in the order shown in Attachment 1 of CMM 2013-03. The Secretariat on request is able to provide CCMs with a list of VIDs for their current and previous delisted RFV vessels, which is a minimum required data field and is needed for MS Excel RFV updates. The Secretariat has appreciated the patience that many CCMs have had with the implementation of the RFV SSPs, particularly those that have and continue to work with the Secretariat to perfect the MS Excel files for upload. Feedback is gratefully received on both mode options, so the Secretariat can continue to refine the procedure and the system and to ensure RFV data quality and consistency are maintained. The WCPFC Secretariat would also like to thank Liman and the NORMA licensing staff for the time they took to visit the WCPFC offices and “road-test” the online direct data entry CCM portal before it was launched.

15. As has been mentioned in previous RFV annual reports, gaps remain in the coverage and quality of information provided by CCMs for their vessels on the RFV. Figure 3 below shows the average, as a percentage of applicable CCMs, of compliance with the requirements in paragraph 6 of CMM 2013-10. The implementation of CMM 2013-03, *Standards, Specifications and Procedures for the RFV* (RFV SSPs), has seen improvement in the completeness of some RFV fields. Annex 3 provides a summary of how complete the information contained in the RFV for each CCM for its vessels that are currently on the RFV (based on the list of fields in CMM 2013-10 paragraph 6). Although shown for completeness, it should be noted that the requirement for submitting an IMO or Lloyd’s Register number does not take effect until 1 January 2016 (CMM 2013-10 6(s)).

Figure 3: Average % of compliance with information required under para 6 of CMM 2013-10



16. There are a couple of matters that the Secretariat would like to raise for CCMs consideration in the context of the implementation of the RFV SSPs.

i) *Authorisation Period field and recording of vessels on RFV which are not authorized to fish beyond areas under national jurisdiction*

17. The Secretariat continues to receive queries, including since the RFV SSPs was implemented about the meaning of expired or blank authorization period for a vessel in the RFV. The Secretariat continues to maintain the advice provided previously by the former Legal Advisor, Professor Martin Tsamenyi, that if a vessel flagged to a Commission member or Cooperating Non-member is listed on the RFV, this implies, through reference to CMM 2013-10, that the flag State considers that the vessel is “entitled to fly its flag and is authorized to fish in the Convention Area”.

18. In addition we note that since the implementation of the RFV SSPs, CMM 2013-03 does provides some guidance to CCMs about how the “authorisation start date” and “authorization end date” fields are expected to be completed in the RFV.⁷ It should also be noted that the

⁷ They are date fields (dd-mmm-yyyy), and CCMs should “Leave blank if the vessel is not authorized by its flag State to be used for fishing for HMS beyond areas of national jurisdiction”

RFV SSPs does permit this field to be left blank: the Field description/instructions in the RFV SSPs states “Leave blank if the vessel is not authorized by its flag State to be used for fishing for HMS beyond areas of national jurisdiction.” At this point in time, the other authorization-related fields in the RFV, which could provide further confirmation that a blank authorization period means a vessel is “not authorized by its flag State to be used for fishing for HMS beyond areas of national jurisdiction”, are not minimum required data for the RFV, and there have been some delays in all CCMs submitting complete RFV information for their vessels.⁸ Until the data in the RFV for these fields is more complete, the Secretariat presently maintains its view that the meaning of a blank authorization period for a vessel in the RFV is an administrative issue between the vessel and the flag State, and CCMs with queries should contact the relevant flag State for clarification.

19. CCMs with vessels that are included on the RFV which are “not authorized by its flag State to be used for fishing for HMS beyond areas of national jurisdiction”, are invited to consider completing the non-minimum required data related to their vessels authorization, as per the instructions in the RFV SSPs.

ii) *Charter Notification and high seas transshipment authorization information and the RFV*

20. Information received from CCMs on charter arrangements can currently be found in two places on the WCPFC Intranet.

I. As part of the Record of Fishing Vessels: where flag CCMs reporting to confirm charter arrangements for their vessels are submitted in accordance with CMM 2013-03 (CMM 2013-03, RFV SSPs).

II. In the Charter Notification List maintained by the Secretariat, which records advice that chartering Members or chartering participating territories have advised the Secretariat as well as the appropriate flag CCM, in accordance with the WCPFC Charter Notification Scheme (CMM 2012-05 or its predecessor)

As at 10 September 2014, six CCMs have notified the Executive Director of a total of 184 vessels currently considered to be chartered under CMM 2012-05.⁹ In comparison, as at 13 September 2014 there are 188 vessels, including one non-CCM carrier and bunker, currently included on the RFV with data that in accordance with CMM 2013-03 is understood to mean that their vessels are operating under a chartering, lease or similar arrangement in accordance with CMM 2012-05 or CMM 2013-10.¹⁰

21. Also provided to CCMs through the RFV records maintained on the WCPFC Intranet is advice from flag CCMs which are provided in accordance with CMM 2013-03, to confirm that the CCM has made an affirmative determination under para 37 of CMM 2009-06 and has authorized its vessel to be used for transshipping HMS on the high seas in the Convention Area. As at 5 September 2014, there were 1516 vessels authorized by 8 CCMs

⁸ The RFV SSPs say that non-minimum required fields related to Authorisation, (Authorisation type, Authorisation number, Authorisation Area and Authorised species) should be completed by CCMs with “not applicable” where the vessels is “not authorized by its flag State to be used for fishing for HMS beyond areas of national jurisdiction”

⁹ FSM 12 vessels, Fiji 10 vessels, Kiribati 7 vessels, Korea 3 vessels, New Zealand 4 vessels and Solomon Islands 148 vessels.

¹⁰ The flags of these vessels are: China, Cook Islands, Federated States of Micronesia, Fiji, Korea, Marshall Islands, Panama, Russia, Chinese Taipei and Vanuatu. Note that there are a few instances where flag CCMs appear to have provided data in the RFV which is understood to mean that vessels of their own flag are operating under charter arrangement to the same CCM, which may have not been the intention of CMM 2013-03.

to be involved in high seas transshipment activities. Table 1 below shows the number of vessels by CCM

Table 1: Number of vessels authorized to be involved in transshipment

CCM	Number
China	456
Chinese Taipei	82
Japan	632
Korea	110
Panama	2
Philippines	1
United States of America	168
Vanuatu	65

22. Noting paragraph 1(b) of CMM 2013-03, the Secretariat reviewed the TCC8 directions to treat Charter Notifications and high seas transshipment authorization information as non-public domain information.¹¹ Admittedly the Secretariat is uncertain if CCMs had intended for specific fields in the RFV to be non-public domain information at the time that the RFV SSPs was adopted by the Commission at WCPFC10. But in the absence of specific direction, the Secretariat has currently applied the TCC8 directives in the implementation of the RFV SSPs. The Secretariat would welcome hearing CCMs views on whether the information that is included by flag CCMs related to charters by their vessels and/or affirmative determination under para 37 of CMM 2009-06 which have submitted in accordance with CMM 2013-03, should be viewable on the public side of the WCPFC website.

23. TCC10 is invited to discuss and provide direction to the Secretariat on whether flag CCM advice submitted as RFV updates related to i) charter notifications and/or ii) high seas transshipment authorisations, should be viewable on the public side of the WCPFC website with other RFV published information?

iii) *IMO or LR Number*

24. As part of the implementation of the RFV-SSPs, since June 2014, the WCPFC Secretariat did include an additional column in the WCPFC Record of Fishing Vessels database to allow CCMs to provide IMO or LR numbers for their vessels. Presently this field is only able to be populated for a vessel using the online direct entry facility on the Intranet. A

¹¹ **TCC8 summary report para 359:** TCC8 recommended WCPFC9 instruct the Secretariat to publish a list of chartered vessels on the secure portion of the WCPFC website.

paragraph 340: TCC8 agreed to task the Secretariat with making available, through the secure portion of the WCPFC website, the list of vessels which CCMs have determined are authorized to tranship in high seas areas, and have been advised to the Commission.

There was no specific adoption by WCPFC9 of these recommendations from the TCC8 Summary Report, but the Secretariat did take these directions from TCC8 into account and only published the information on the secure side of the WCPFC website.

recommendation is made below, for an amendment to CMM 2013-03 to allow CCMs to provide their IMO numbers as part of their MS Excel submitted RFV updates.

25. In addition, the Secretariat would note that in accordance with the WCPFC10 decision, the requirements for a unique vessel identifier has been incorporated by the inclusion of paragraph 6(s) and footnote 4 into the current Conservation and Management Measure for the Record of Fishing Vessels (CMM 2013-10). Given this, the Secretariat would like to propose that TCC10 consider recommending to the Commission to revoke CMM 2013-04, noting that the operative parts of this CMM document are covered in CMM 2013-10.

26. TCC 10 is invited to discuss and recommend to the Commission to revoke CMM 2013-04, noting that the operative parts of this document have been duly incorporated into CMM 2013-10 as paragraph 6(s) and footnote 4

iv) *VID, RFV Data Action Codes and reflagging as a special case*

27. The VID is the internal WCPFC Secretariat system identifier for WCPFC RFV records, and provides a necessary check, particularly when updates are being made through the mode of MS Excel file, so as to ensure that the correct vessel records are being updated. The Secretariat cannot stress how important it is that flag CCMs, duly check to make sure that the VID numbers that they provide in MS Excel files are the correct. The Secretariat has received MS Excel files from CCMs which have contained incorrect VID numbers, and we have been fortunate that the data included in the RFV field was sufficiently different that the file checks rejected the update and records were not mistakenly updated. If CCMs are unsure if the VID numbers for their submitted vessels, the Secretariat can on request provide CCMs with a list of VIDs for their current and previous delisted RFV vessels. We would also note that VIDs are viewable through the Intranet hosted and public website versions of the WCPFC RFV.

28. Related to the VID and along the vein of ensuring that RFV updates are correctly matched to the correct vessels record in the RFV, the RFV SSPs currently describes three “Data Action Codes” text fields: “ADDITION” “MODIFICATION” and DELETION”. Through the experience of implementing the RFV SSPs the WCPFC Secretariat would point out that there are in fact five sets of circumstances for which the RFV updates from flag CCMs might be described:

- i. *Addition*: for a vessel that has not been on the RFV (active or previously delisted), to be added to the RFV;
- ii. *Modification*: for a vessel currently on the RFV and which is to be modified by the current submitted by CCM and is to remain on the RFV;
- iii. *Deletion*: for a vessel currently on the RFV to be removed from the RFV by the same submitted by CCM;
- iv. *Relisting*: for a vessel that has previously been on the RFV, but was deleted (delisted) at some stage, and is to be reinstated on the RFV by the same submitted by CCM; and
- v. *Reflagging*: for a vessel that has previously been on the RFV, but was deleted (delisted) at some stage, and is to be reinstated on the RFV by a different submitted by CCM.

For the circumstances of true additions of vessels to the RFV, there would not be a VID for the vessel, and instead the RFV system will assign a new VID number for the vessel record at the time that the new vessel record is created. The VID is an important reference number for other four set of circumstances described in ii – iv.

29. From the experience over the last couple of months with the RFV SSPs, the two modes for CCMs to provide updates of vessels to the RFV have been shown to adequately cater for the data action code circumstances i. – iv: *Addition; Modification; Deletion* and *Relisting*. However, experience has shown in recent months as well as previous years that there are some procedural steps involved in the circumstances of *Reflagging* which does make it a special case. The current WCPFC business process when vessels are reflagged vessels are as follows:
- 1) WCPFC receives advice (either through online portal or MS Excel file mode) from CCM A of a RFV update for “DELETION” of Vessel AA from its list of vessels on the RFV;
 - 2) Secretariat receives RFV update from CCM A. RFV system confirms CCM A is the submitted by CCM for Vessel AA in the RFV and if submission meets minimum data requirements of RFV SSPs, then Vessel AA will be delisted from the RFV;
 - 3) WCPFC receives advice (either through online portal or MS Excel file mode) from CCM B of a RFV update for “REFLAGGING” of Vessel AA to its list of vessels on the RFV;
 - 4) Secretariat receives RFV update from CCM B. RFV system confirms Vessel AA is delisted from the RFV, and advice from CCM B meets minimum data requirements of RFV SSPs, and only then is the Vessel AA record updated and listed on RFV showing as submitted by CCM B.
30. It is the order of this four step process and the checks that are done by the Secretariat/RFV system at step 2 and 4) which re-emphasizes the importance of having an accurate VID in MS Excel file submissions. In addition there is some onus on the flag CCM which has reflagged a vessel and intends to submit the vessel at step 3), to undertake the necessary checks that steps 1) and 2) have been duly completed, and before it submits its request at step 3). One option might therefore be to ask that flag CCMs who are advising of vessels that are reflagged, to confirm that the time of submitting updates at step 3) to provide some positive confirmation that the vessel being reflagged is deleted by the previous submitted by CCM.
31. Recommendations are made below for proposed changes in CMM 2013-03 to include the data action codes of “RELISTING” and “REFLAGGING”. The addition of two new fields to Attachment 1 (previous WIN and previous “submitted by CCM”) is proposed for instances of “REFLAGGING” with a view to providing a few more checks to minimize the chance of error in the case of reflagging instances. The Secretariat would also prefer that RFV updates for “REFLAGGING” are only made through the CCM online direct entry (para 3 (b) of CMM 2013-03).

Suggested improvements to the RFV SSPs

32. CMM 2013-03 paragraphs 14 and 15 tasks the Secretariat with periodically making recommendations for improvements or modifications to the RFV SSPs. Many of the suggested improvements are editorial in nature, and others are suggestions based on the

Secretariats experience from implementing the RFV SSPs. Other proposed edits have taken into some of the actual challenges that CCMs and the Secretariat have faced over the past couple of months, particularly with implementing the MS Excel file option for submitting RFV updates, for example needing exact phrase matches for the longer names of fishing method, fishing gear type and Port of Registry has been problematic. Draft proposed amendments to CMM 2013-03 are provided for TCC10's consideration in Annex 6 to this paper.

33. The changes proposed to the RFV SSPs include:

- a. *Update to CMM 2013-10*: to replace all references to "CMM 2009-01" with the updated reference to the current CMM that is in force "CMM 2013-10";
- b. *Inclusion of a new data action code "RELISTING"*: to better clarify the circumstances when a CCM is reinstating a vessel that is not currently on the RFV and for which the most recent instance of that vessel includes the same CCM as the submitting CCM. Corresponding edits are included in Attachment 1 and Attachment 3 to CMM 2013-03;
- c. *Inclusion of a new data action code "REFLAGGING"*: to better clarify a vessel that has previously been on the RFV, but was deleted (delisted) at some stage, and is to be reinstated on the RFV by a different submitted by CCM. Corresponding edits are included in Attachment 1 and Attachment 3 and 4 to CMM 2013-03.
- d. *Correction to VID field instructions*: this is a number (integer field) and so it is not correct to include a text answer, so for this reason it is proposed that the the option of stating "NONE" is replaced with "leave blank for ADDITION";
- e. *Definitive list for Type of Length*: remove free text option, and provide the four choices for type of length that are currently included in the WCPFC RFV (overall, waterline, registered, and between perpendiculars);
- f. *Correct Moulded Depth units*: Revise the designation of the "Unit of depth" which is associated with the "Moulded Depth" field to be a non-minimum required field, noting that "Moulded Depth" is currently not a minimum required field;
- g. *Revisions to Attachments 5 and 6 of CMM 2013-03* to include FAO abbreviations for Vessel Types and Fishing Gears respectively, and to amend the "Field description/instructions" so that CCMs are instructed to use FAO abbreviations instead of full names when submitting updates to the RFV, two proposed vessel types that were listed in Attachment 5 (Factory Longliner and Freezer Longliner which are currently not used in the RFV and for which there is FAO abbreviation are proposed to be removed from the list, the Harpoon gear type which is on the RFV is proposed for addition to the list);
- h. *Revisions to the "Field description/instructions" in Attachment 1*: for "Type of fishing method or methods field" to specify that CCMs should leave the field blank (instead of stating "not a fish harvester" if the vessel is considered to not be a fish harvester);
- i. *Revisions to the instructions for some of the charter-related fields* in Attachment 1 so that when a CCM has confirmed that a vessel is not under charter (has entered "not applicable") the remaining charter-related fields are to be "left blank";
- j. *Addition of three new data fields in Attachment 1*:
 - a. IMO of LR Number

- b. Previous “Submitted by CCM” – only minimum required data for “REFLAGGING” updates
 - c. Previous WCPFC Identification Number (WIN) – only minimum required data for “REFLAGGING” updates
 - k. *Inclusion of a new Attachment 8 (to be further developed) and revisions to the “Field description/instructions for “Port of Registry”*. The proposal is to use the UN/LOCODE for “Port of Registry” field where one is available, and task Secretariat to work with interested CCMs, SPC, PNAO and FFA towards preparing at least 30 days in advance of WCPFC11 a proposed list for the revised RFV SSPs of codes for the other ports within in the Convention Area that currently do not have a UN/LOCODE.
 - l. *Edits to Attachment 3*: removal of the option for MS Access files which upon reflection is a type of file that is more complex than the MS Excel file option to automate.
 - m. *Updates to Attachment 4*: correction to the web portal address.
34. On point k. “Port of registry” is a minimum required field in the RFV SSPs. To help store structured data, enhance usability of this data and to minimize error, the Secretariat can see the merits of using an international standard list of ports. The “United Nations Code for Trade and Transport Locations” commonly known as “UN/LOCODE” is used by most major shipping companies, by freight forwarders and in the manufacturing industry around the world. It currently includes over 97,114 locations in 249 countries and installations in international waters.¹² However, the Secretariat understands that not all ports are currently captured in the UN/LOCODE.
35. Annex 4 provides a list of ports currently used in the WCPFC databases, SPC and/or FIMS databases but which does not yet have an UN/LOCODE allocated.¹³ It is proposed that the WCPFC Secretariat work with interested CCMs, and subregional agencies, to develop a list of codes for the non-UN/LOCODE ports within the region, for use by CCMs when submitting their RFV updates. The list developed for the RFV SSPs attachment 8, might focus on any ports of registry with no UN/LOCODE. It might be a subsequent activity for the Secretariat collaboration with subregional agencies and interested CCMs to expand the WCPFC port codes to include other Ports, without UN/LOCODE that are commonly used in other WCPFC data sets.

36. TCC10 is invited to discuss and recommend to the Commission to:

- a. Approve the amendments to CMM 2013-03 as shown in **Annex 6** to this paper, noting that Attachment 8 is work to be completed by the Secretariat before WCPFC11;
- b. Adopt the use of UN/LOCODE for “Port of Registry” field where one is available, and task Secretariat to work with interested CCMs, SPC, PNAO and FFA towards preparing at least 30 days in advance of WCPFC11 a proposed list for the revised RFV SSPs of codes for the other ports within in the Convention Area that currently do not have a UN/LOCODE.

¹² <http://www.unece.org/cefact/locode/service/location.html>

¹³ Our appreciation to SPC and PNA FIMS for providing a copy of their current Port lists and codes.

Administrative notes and notes on collaboration with other organisations

Updates on Global Consolidated List of Authorised Vessels

37. The WCPFC Secretariat is a participant with other tuna RFMO secretariats in the Joint Tuna RFMO initiative for the Consolidated Global List of Authorised Fishing Vessels. During late 2012 work on this initiative slowed, in part due to funding constraints. Recently, work on the CLAV has been reinvigorated through the GEF-Areas Beyond National Jurisdiction project, and CLAV IT Expert, Mr. Fabio Fiorellato, is expected to be visiting the WCPFC Secretariat from 1- 11 October 2014 to further discuss ways to improve the process of updating the CLAV based on information contained in the WCPFC RFV.

Updates on collaboration with subregional agencies and international organisations

38. **FFA and SPC:** Through 2014, WCPFC Secretariat had a preliminary exchange of views with the FFA Secretariat on how RFV SSPs might be best implemented by FFA members through the RIMF and associated initiatives; this matter is a work in progress between the agencies. In June 2014, the WCPFC Secretariat has been working closely with FFA Secretariat to assistance in their work to display RFV published information within the FFA RIMF and associated initiatives. Similar collaboration has occurred with SPC-OPF IT staff, for use in SPC-related work and databases. More recently WCPFC, SPC and PNAO have exchanged information on the port codes used in their respective IMS/databases.
39. **CCAMLR:** On May-June 2014, CCAMLR's IT Manager, Mr Tim Jones, visited the WCPFC headquarter to share information and experiences with the Secretariat on areas of mutual interests and benefits to both organizations, particularly on IT and IMS initiatives. While in Pohnpei, the CCAMLRs IT Manager generously availed his time and expertise and worked with the WCPFC IT Manager and WCPFC IMS contractor Taz-E to develop and implement the MS Excel file loader as part of the RFV SSPs implementation, this was a significant contribution to the successful and on-time delivery of the RFV SSPs, and the WCPFC Secretariat remains extremely grateful for CCAMLRS assistance.

Administration notes for the RFV

40. All general RFV inquiries, requests for assistance and submissions of electronic files to update the RFV, should be directed to the email address: contact.rfv@wcpfc.int

**Annex 1: Summary of vessels in the RFV by CCM
as at 5 September 2014¹⁴**

CCM	Longliner	Purse seiner	Pole and Line	Carrier & Bunker	Support Vessel	Harpoon	Others	Total
AU	45	8					17	70
BZ	0	0		9			0	9
CA	1	0					22	23
CN	542	58		7			14	621
CK	12	0					0	12
EC	0	11					0	11
EU	50	46		6			0	102
FJ	83	0					0	83
FM	18	9		2			0	29
ID	163	124	26	26	55		7	401
JP	548	83	102	77	61	307	52	1230
KI	6	15	1	37			0	59
KR	199	56		38	1		4	298
MH	0	10		6			0	16
NC	17	0					0	17
NZ	4	4					1	9
PA	0	0		62			3	65
PH	20	157		238	357		24	796
PG	21	18		4			1	44
PF	95	0					0	95
RU	0	0		1			0	1
SB	0	5					0	5
SV	0	4					0	4
TH	0	0		6			0	6
TO	2	0					0	2
TV	2	1		3			0	6
TW	1562	107		20			3	1692
US	149	40	6				13	208
VU	91	16		28			0	135
Total	3630	772	135	570	474	307	161	6049
%	60%	13%	2%	9%	8%	5%	3%	100%

¹⁴ Note: Longliner = tuna longliner and longliner vessel types; and purse seiner = tuna purse seiner and purse seiner vessel types

Annex 2: Summary of information received in the fish/did not fish report for 2013¹⁵

	CCMs	Fish/Did not fish Report due: 1 July 2014	Longliner	Purse seiner	Pole & Line	Fish Carriers & Bunker	Others	Total
1	Australia	25-Mar-14	10					10
2	Canada	21-Feb-14					1	1
3	China	30 Feb 2014	379	35		2		416
4	Chinese Taipei	1-Jul-14	656	38		17		711
5	Cook Islands	3-Jul-14	5					5
6	EU	1-Jul-14	6	4		4		14
7	FSM	22-Apr-14	21	9		0		30
8	Fiji	6-Jun-14	68					68
9	French Polynesia	25-Jun-14	No vessels 'fished' in 2013					
10	Indonesia	30-Jun-14	86	27	5	20	23	161
11	Japan	23-May-14	410	87	99	77	422	1095
12	Kiribati	16-Jun-14	7	13	1	43		64
13	Korea	13-Jun-14	126	24		21		171
14	RMI	30-Jun-14		10		4		14
15	Mexico	n/a - no vessels on the RFV						
16	Nauru	n/a - no vessels on the RFV						
17	New Caledonia	26-Jun	No vessels 'fished' in 2013					
18	New Zealand	28-Feb-14	1	4				5
19	Niue	n/a - no vessels on the RFV						
20	Palau	n/a - no vessels on the RFV						
21	PNG	20-May-14	6	12		1		19
22	Philippines	23-Jul-14	1	74		88	152	315
23	Samoa	n/a - no vessels on the RFV						
24	Solomon Islands	3-Jun-14	No vessels 'fished' in 2013					
25	Tokelau	n/a - no vessels on the RFV						
26	Tonga	1-May-14	No vessels 'fished' in 2013					
27	Tuvalu	10-Jun-14	2	1		3		6
28	USA	27-Jun-14	139	40	4		9	192
29	Vanuatu	25-Jun-14	73	16	1	25		115
30	Wallis & Futuna	n/a - no vessels on the RFV						
31	Belize	12-Jun-14	1			5		6
32	Ecuador	5-Apr-14		7				7
33	El Salvador	30-Apr-14		4				4
34	DPRK	n/a - no vessels on the RFV						
35	Panama	currently outstanding						
36	Thailand	1-Jul-14	No vessels 'fished' in 2013					
37	Vietnam	14-Jul-14	No vessels 'fished' in 2013					
Total vessels that fished in 2013			1,997	405	110	310	607	3,429

¹⁵ Note: Longliner = tuna longliner and longliner vessel types; and purse seiner = tuna purse seiner and purse seiner vessel types

Annex 3: Indication of how complete the RFV information is, shown as a summary by each CCM for its vessels for the requirements under CMM 2013-10 paragraph 6

Note: In blue are minimum required fields and highlighted in red are those with compliance of less than 50%

Submitted By CCM	Number of Vessels	VslName	Reg#	WIN ID	PrevName	PortofRegistry	OwnerName	OwnerAddr
Australia	70	100%	100%	100%	99%	100%	100%	100%
Belize	9	100%	100%	100%	78%	100%	100%	100%
Canada	23	100%	100%	100%	35%	100%	100%	100%
Cook Islands	12	100%	100%	100%	100%	100%	100%	100%
China	621	100%	100%	97%	52%	76%	95%	93%
Ecuador	11	100%	100%	100%	73%	100%	100%	100%
Fiji	83	100%	100%	99%	82%	99%	100%	100%
FSM	29	100%	100%	100%	83%	100%	100%	100%
Indonesia	401	100%	100%	82%	68%	28%	100%	100%
Japan	1230	100%	100%	75%	58%	100%	100%	100%
Kiribati	59	100%	100%	95%	78%	98%	100%	100%
Korea (Republic of)	300	100%	100%	97%	35%	100%	100%	100%
Marshall Islands	16	100%	100%	100%	94%	100%	100%	100%
New Caledonia	17	100%	100%	100%	100%	100%	100%	100%
New Zealand	9	100%	100%	100%	78%	100%	100%	100%
Panama	64	100%	100%	84%	78%	84%	100%	100%
French Polynesia	95	100%	100%	91%	13%	38%	100%	100%
Papua New Guinea	44	100%	100%	75%	34%	82%	95%	89%
Philippines	796	100%	100%	86%	73%	100%	100%	100%
Solomon Islands	5	100%	100%	100%	100%	100%	100%	100%
El Salvador	4	100%	100%	75%	50%	100%	100%	100%
Thailand	6	100%	100%	83%	17%	83%	100%	100%
Tonga	2	100%	100%	100%	0%	100%	100%	0%
Tuvalu	6	100%	100%	100%	17%	100%	100%	100%
Chinese Taipei	1692	100%	100%	100%	83%	100%	100%	100%
USA	208	100%	100%	100%	100%	100%	100%	100%
Vanuatu	135	100%	100%	95%	64%	100%	100%	99%
European Union	102	100%	100%	98%	3%	97%	100%	100%
Total	6049							
Avg % of compliance		100%	100%	94%	62%	92%	100%	96%

Submitted By CCM	MasterName	MasterNationality	PrevFlag	Callsign	Comms	WhereVesselBuilt	YearBuilt	Type
Australia	100%	3%	99%	99%	100%	99%	74%	100%
Belize	100%	100%	89%	100%	100%	100%	100%	100%
Canada	96%	96%	4%	91%	96%	100%	100%	100%
Cook Islands	100%	83%	100%	100%	100%	100%	100%	100%
China	94%	97%	43%	97%	92%	99%	98%	98%
Ecuador	100%	100%	73%	100%	100%	100%	100%	100%
Fiji	99%	99%	87%	100%	98%	98%	94%	100%
FSM	100%	100%	93%	100%	93%	100%	100%	100%
Indonesia	18%	18%	18%	89%	15%	69%	14%	100%
Japan	100%	100%	56%	75%	74%	100%	100%	100%
Kiribati	100%	98%	86%	100%	95%	100%	100%	100%
Korea (Republic of)	96%	93%	27%	100%	99%	100%	100%	100%
Marshall Islands	100%	100%	94%	100%	100%	100%	100%	100%
New Caledonia	100%	100%	100%	100%	100%	100%	100%	100%
New Zealand	100%	100%	89%	100%	100%	100%	100%	100%
Panama	86%	84%	55%	100%	95%	98%	98%	95%
French Polynesia	99%	55%	6%	67%	89%	100%	94%	100%
Papua New Guinea	43%	45%	45%	98%	89%	43%	91%	98%
Philippines	97%	86%	64%	89%	76%	99%	100%	100%
Solomon Islands	100%	100%	100%	100%	100%	100%	100%	100%
El Salvador	100%	100%	50%	100%	100%	100%	100%	100%
Thailand	100%	100%	17%	100%	100%	100%	100%	100%
Tonga	0%	0%	0%	100%	0%	0%	0%	100%
Tuvalu	100%	100%	33%	100%	100%	100%	100%	100%
Chinese Taipei	99%	100%	76%	100%	99%	100%	100%	100%
USA	100%	100%	100%	100%	100%	100%	100%	100%
Vanuatu	99%	100%	76%	100%	97%	99%	99%	100%
European Union	47%	87%	3%	100%	44%	52%	50%	100%
Avg % of compliance	88%	84%	60%	97%	87%	91%	90%	100%

Submitted By CCM	CrewCompliment	Vsl_Length	LengthType	LengthUnit	MDepth	UnitofDepth	VslBeam	UnitofBeam
Australia	67%	100%	100%	100%	34%	86%	99%	99%
Belize	100%	100%	100%	100%	100%	0%	100%	11%
Canada	96%	100%	91%	96%	91%	0%	96%	0%
Cook Islands	100%	100%	100%	100%	100%	0%	100%	100%
China	98%	100%	97%	90%	100%	7%	100%	29%
Ecuador	100%	100%	100%	100%	100%	64%	100%	64%
Fiji	99%	100%	100%	100%	100%	40%	100%	60%
FSM	100%	100%	100%	100%	100%	59%	100%	59%
Indonesia	14%	19%	7%	14%	18%	0%	13%	0%
Japan	100%	100%	75%	73%	100%	52%	100%	52%
Kiribati	93%	100%	98%	93%	97%	3%	100%	41%
Korea (Republic of)	100%	100%	94%	58%	100%	10%	100%	11%
Marshall Islands	100%	100%	100%	94%	100%	0%	100%	94%
New Caledonia	100%	100%	100%	100%	82%	41%	100%	100%
New Zealand	100%	100%	100%	100%	100%	11%	100%	44%
Panama	89%	100%	91%	97%	100%	17%	100%	27%
French Polynesia	64%	100%	100%	0%	58%	0%	100%	0%
Papua New Guinea	68%	100%	98%	98%	30%	5%	36%	14%
Philippines	97%	99%	68%	69%	99%	3%	80%	3%
Solomon Islands	100%	100%	100%	100%	100%	0%	100%	0%
El Salvador	100%	100%	100%	100%	100%	0%	100%	50%
Thailand	100%	100%	100%	100%	100%	0%	83%	0%
Tonga	0%	100%	100%	0%	0%	0%	0%	0%
Tuvalu	100%	100%	100%	100%	100%	0%	100%	0%
Chinese Taipei	100%	100%	99%	99%	100%	25%	100%	33%
USA	100%	100%	100%	100%	100%	100%	100%	100%
Vanuatu	99%	100%	99%	93%	100%	10%	100%	28%
European Union	51%	99%	50%	5%	53%	0%	44%	1%
Avg % of compliance	87%	97%	92%	81%	84%	19%	88%	36%

Submitted By CCM	GRT/GT	TypeTonnage	PowerofEngine	PowerUnit	FreezerType	FreezingCapacity	UnitFreezingCapacity
Australia	100%	99%	83%	99%	40%	49%	90%
Belize	100%	11%	100%	100%	0%	0%	0%
Canada	100%	0%	96%	70%	0%	0%	0%
Cook Islands	100%	100%	100%	100%	0%	0%	0%
China	100%	29%	100%	99%	5%	5%	5%
Ecuador	100%	64%	100%	100%	55%	18%	0%
Fiji	100%	60%	100%	100%	0%	0%	0%
FSM	100%	59%	100%	100%	59%	59%	59%
Indonesia	100%	0%	100%	69%	0%	0%	0%
Japan	100%	52%	99%	100%	1%	0%	1%
Kiribati	100%	41%	97%	95%	0%	0%	0%
Korea (Republic of)	100%	11%	100%	99%	1%	1%	1%
Marshall Islands	100%	94%	100%	94%	0%	0%	0%
New Caledonia	100%	100%	100%	100%	0%	0%	0%
New Zealand	100%	44%	100%	100%	0%	0%	0%
Panama	100%	27%	100%	73%	3%	3%	3%
French Polynesia	97%	0%	100%	100%	0%	0%	0%
Papua New Guinea	98%	14%	91%	91%	5%	2%	2%
Philippines	100%	3%	91%	63%	0%	1%	1%
Solomon Islands	100%	0%	100%	100%	0%	0%	0%
El Salvador	100%	50%	100%	100%	0%	0%	0%
Thailand	100%	0%	100%	100%	0%	0%	0%
Tonga	100%	0%	0%	0%	0%	0%	0%
Tuvalu	100%	0%	100%	100%	0%	0%	0%
Chinese Taipei	100%	33%	100%	99%	0%	0%	0%
USA	100%	100%	100%	100%	100%	100%	100%
Vanuatu	100%	28%	98%	99%	1%	1%	2%
European Union	100%	1%	97%	96%	0%	0%	0%
Avg % of compliance	100%	36%	95%	91%	10%	9%	9%

Submitted By CCM	#FreezerUnits	FishHoldCapacity	UnitFishHoldCap	FormofAuthorisation	AuthNumber	AuthArea	Species	PeriodFrom	PeriodTo
Australia	47%	51%	94%	99%	96%	99%	97%	100%	100%
Belize	0%	33%	33%	100%	100%	100%	100%	100%	100%
Canada	0%	48%	43%	91%	96%	17%	87%	96%	96%
Cook Islands	8%	92%	92%	100%	92%	100%	92%	100%	100%
China	5%	98%	87%	91%	87%	94%	92%	76%	85%
Ecuador	64%	100%	100%	100%	100%	82%	73%	73%	73%
Fiji	0%	100%	99%	94%	99%	100%	100%	99%	99%
FSM	59%	93%	93%	100%	97%	100%	100%	100%	90%
Indonesia	0%	3%	2%	14%	14%	99%	1%	100%	100%
Japan	1%	91%	90%	73%	72%	72%	72%	72%	71%
Kiribati	0%	78%	81%	81%	80%	93%	83%	98%	98%
Korea (Republic of)	1%	90%	92%	52%	93%	93%	91%	78%	79%
Marshall Islands	0%	69%	75%	100%	100%	94%	81%	100%	94%
New Caledonia	0%	82%	88%	100%	100%	100%	100%	100%	100%
New Zealand	0%	89%	89%	100%	89%	78%	56%	100%	100%
Panama	3%	81%	84%	67%	66%	69%	33%	100%	100%
French Polynesia	0%	0%	0%	99%	65%	100%	65%	65%	0%
Papua New Guinea	2%	73%	61%	70%	75%	86%	82%	80%	84%
Philippines	1%	39%	29%	100%	98%	70%	66%	66%	80%
Solomon Islands	0%	100%	100%	100%	100%	100%	100%	0%	0%
El Salvador	0%	100%	100%	100%	100%	100%	100%	100%	100%
Thailand	0%	100%	100%	17%	0%	17%	0%	17%	17%
Tonga	0%	0%	0%	100%	100%	0%	0%	0%	0%
Tuvalu	0%	50%	50%	100%	100%	100%	100%	50%	50%
Chinese Taipei	0%	97%	98%	100%	100%	99%	100%	50%	50%
USA	100%	100%	100%	100%	100%	100%	100%	100%	100%
Vanuatu	1%	95%	96%	97%	96%	98%	97%	99%	99%
European Union	0%	46%	45%	87%	53%	3%	38%	47%	100%
Avg % of compliance	10%	71%	72%	87%	85%	81%	75%	77%	77%

Submitted By CCM	HSTranship	PSTranship	Charter	CharterCCM	ChName	AddressCharterer	StartDate	ExpirationDate	IMO#	Averagee
Australia	97%	97%	100%	0%	3%	3%	0%	0%	0%	77%
Belize	0%	0%	100%	0%	0%	0%	0%	0%	0%	66%
Canada	0%	0%	100%	0%	0%	0%	0%	0%	0%	59%
Cook Islands	17%	8%	100%	8%	8%	8%	8%	8%	0%	73%
China	73%	0%	100%	10%	10%	10%	10%	10%	1%	67%
Ecuador	64%	64%	100%	0%	0%	0%	0%	0%	0%	75%
Fiji	1%	2%	100%	23%	23%	23%	23%	23%	0%	73%
FSM	59%	59%	100%	59%	59%	59%	59%	59%	59%	86%
Indonesia	0%	0%	100%	0%	0%	0%	0%	0%	0%	36%
Japan	51%	0%	100%	0%	0%	0%	0%	0%	0%	65%
Kiribati	2%	2%	100%	0%	0%	0%	0%	0%	0%	67%
Korea (Republic of)	38%	1%	100%	1%	1%	1%	1%	1%	1%	63%
Marshall Islands	0%	0%	100%	6%	6%	6%	6%	6%	6%	71%
New Caledonia	100%	100%	100%	0%	0%	0%	0%	0%	0%	77%
New Zealand	44%	44%	100%	0%	0%	0%	0%	0%	0%	70%
Panama	5%	2%	100%	6%	6%	6%	6%	6%	0%	63%
French Polynesia	0%	0%	100%	0%	0%	0%	0%	0%	0%	49%
Papua New Guinea	7%	7%	100%	0%	0%	0%	0%	0%	0%	54%
Philippines	0%	0%	100%	0%	0%	0%	0%	0%	0%	58%
Solomon Islands	0%	0%	100%	0%	0%	0%	0%	0%	0%	65%
El Salvador	0%	0%	100%	0%	0%	0%	0%	0%	0%	68%
Thailand	0%	0%	100%	0%	0%	0%	0%	0%	0%	53%
Tonga	0%	0%	100%	0%	0%	0%	0%	0%	0%	27%
Tuvalu	0%	0%	100%	0%	0%	0%	0%	0%	0%	61%
Chinese Taipei	5%	3%	100%	4%	6%	6%	4%	4%	0%	68%
USA	99%	99%	100%	0%	91%	91%	0%	0%	0%	91%
Vanuatu	49%	2%	100%	10%	10%	10%	10%	10%	1%	70%
European Union	0%	0%	100%	0%	0%	0%	0%	0%	0%	46%
Avg % of compliance	25%	18%	100%	5%	8%	8%	5%	5%	2%	64%

Note: In blue are minimum required fields and highlighted in red are those with compliance of less than 50%

Annex 4: List of ports that currently do not have a UN/LOCODE but are currently used in the WCPFC Port list, SPC and/or PNA FIMS database

Port Name	CountryCode	Port Name	CountryCode
Utulei	AS	Benoa	ID
Bermagui	AU	Benua	ID
Bridport	AU	Biak	ID
Burnett Heads	AU	Bitung	ID
Crowdy Head	AU	Cilacap	ID
Dunalley	AU	Indonesia	ID
Greenwell Point	AU	Meneng	ID
Iluka	AU	Pontianak	ID
Jerseyville	AU	Sabang	ID
Kettering	AU	Tanjung Priok	ID
King Island	AU	Ternate	ID
Kurumba	AU	Abuta	JP
Nelson Bay	AU	Ainan	JP
Nubeena	AU	Aki	JP
Port Fairy	AU	Bonotsu	JP
Port Hacking	AU	Botomari	JP
Terrigal	AU	Chichizima	JP
Tin Can Bay	AU	Choc	JP
Triabunna	AU	Daio	JP
Tuncurry	AU	Echizen	JP
La Paz	BL	Ehime	JP
Ahousat	CA	Esashi	JP
Avatiu	CK	Funacoshi	JP
Concepcion	CL	Furue	JP
Aotou	CN	Goto	JP
Hong Kong	CN	Hamanoichi	JP
Jaluit	CN	Hasaki	JP
Long Kou	CN	Hatakeshima	JP
Shan Tou	CN	Hegushi	JP
Talien	CN	Hetamura	JP
Barranguilla	CO	Hirota	JP
Cartagema	CO	Hokkaido	JP
Havana	CU	Hotojima	JP
Quetzal	EC	Ieshima	JP
Taboga	EC	Ie-son	JP
Barbate	ES	Iorigawa	JP
Cillero	ES	Ishibuka	JP
Malaga	ES	Ishimo	JP
Marin	ES	Ishizu	JP
Santa Eugenia Ribeira	ES	Itoman	JP
Villagarcia	ES	Iwate	JP
Coquille Harbour	FM	Izumi	JP
Lelu	FM	Kadogawa	JP
Moen	FM	Kaifu	JP
Nukuoro	FM	Kamakawa	JP
Teroken	FM	Kamikawagu	JP
Apra Harbor	GU	Kamisu-Shi	JP
Ambon	ID	Kanonji, Kagawa	JP
Bagansiapiapi	ID	Karakuwa	JP
Bali	ID	Kashima	JP
Banyuwangi	ID	Katsuura	JP

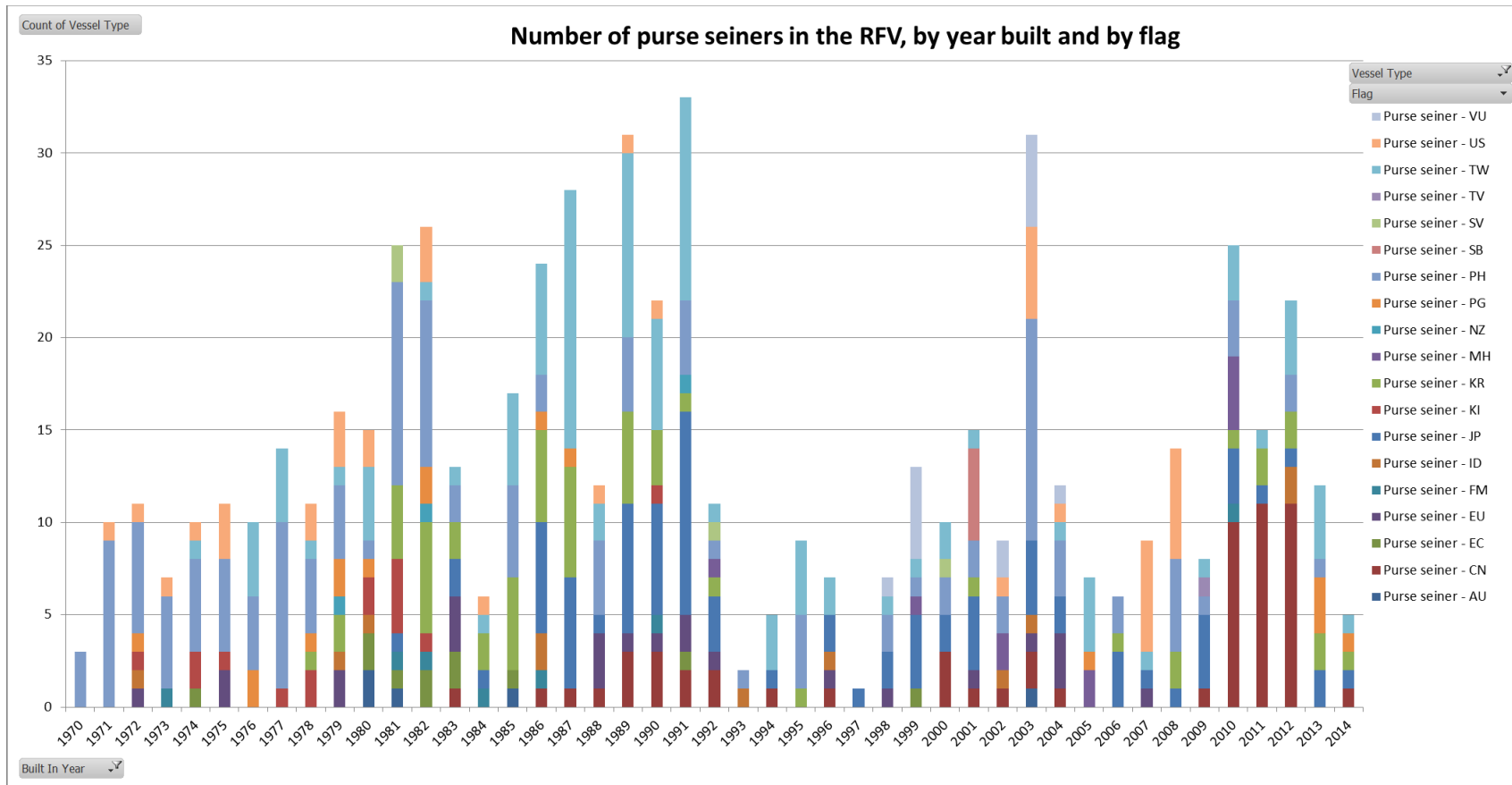
Port Name	CountryCode
Kawaminami	JP
Kihoku	JP
Kiinagashima	JP
Koajiro	JP
Kogawa	JP
KOROSHIO	JP
Kouchi	JP
Kubotsu	JP
Kukihama	JP
Kumano	JP
Kurobe	JP
Kuroshio	JP
Kushikino	JP
Kushima	JP
Kuzi	JP
Macikatiru	JP
Mikiura	JP
Minabe	JP
Minamiise	JP
Minamisanriku	JP
Misaki	JP
Miura	JP
Miyako	JP
Miyama	JP
Miyanoura	JP
Miyazaki	JP
Mochimune	JP
Motimune	JP
Muroto	JP
Murotomisa	JP
Murotsu	JP
Nachikatsu	JP
Nachikatsuura	JP
Naha	JP
Nakatane	JP
Nakatosa	JP
Nakaura	JP
Nango	JP
Nansei	JP
Nayaura	JP
Nishiizu	JP
Noto	JP
Nou	JP
Nyuzen	JP
Obama	JP
Octimune	JP
Odotsu	JP
Ogachi	JP
Oka	JP
Okachi	JP
Okamie	JP
Okaura	JP
Ooita	JP

Port Name	CountryCode
Ootsuki	JP
Oshika	JP
Otaga	JP
Ozuchi	JP
Palikulo	JP
Rikuzentakata	JP
Ryugatake	JP
Sajima	JP
Sakaiminat	JP
Seiyo	JP
Sendai	JP
Shichigahama	JP
Shikuura	JP
Shima	JP
Shinkamigoto	JP
Shiriuchi	JP
Shizogawa	JP
Shukuura	JP
Su-Ao	JP
Sukuinoura	JP
Sukumo	JP
Suzu	JP
Tachiura	JP
Taiji	JP
Takegashima	JP
Taro	JP
Taso	JP
Tasoura	JP
Tawarazaka	JP
Toda	JP
Tomari	JP
Tosa	JP
Toyo	JP
Tsukiji	JP
Tsuno	JP
Tukumi	JP
Tyosi	JP
Uozu	JP
Usami	JP
Usui	JP
Wagu	JP
Watarai	JP
Whinomaky	JP
Yamadamachi	JP
Yamakawa	JP
Yasuda	JP
Yokoura	JP
Yonabaru	JP
Yura	JP
Cambodia	KH
Kiritimati	KI
Line Group	KI
London	KI

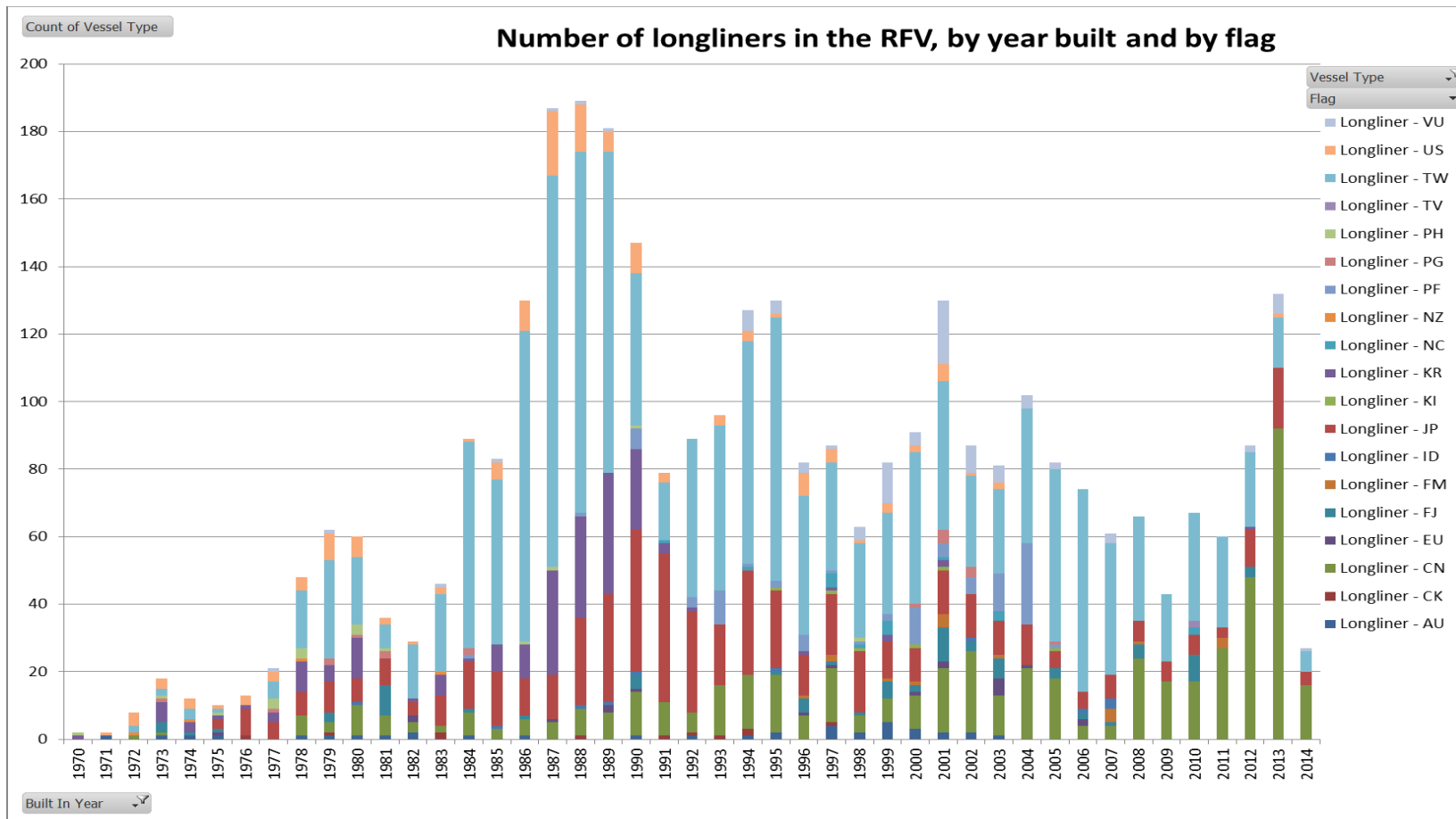
Port Name	CountryCode
Nukumanu Island	KI
Basseterre	KN
Casamar	KR
Gamchun	KR
Inchon	KR
Korea Nei	KR
Pusan	KR
Tong-Yong	KR
Yosu	KR
Jaluit	MH
Myanmar	MM
Saipan, US CNMI	MP
Willemstad, Curacao	NL
Littleton	NZ
Cristobal	PA
Awin Island	PG
Baluan Island	PG
Buluan Island	PG
Cape Gerhard	PG
Crown Island	PG
Dregerhafen	PG
Garove Island	PG
Hermit Island	PG
Kabakaul	PG
Karkar Island	PG
Kembi	PG
Kokopo	PG
Lorengau	PG
Madau Island	PG
Manus	PG
Minigo Island	PG
Misima	PG
Motukea (Port Moresby)	PG
Musau Island	PG
Nukumanu Island	PG
Purdy Island	PG
Rat Island	PG
Simbiri Island	PG
Tabar Island	PG
Vidar (Sek Harbour)	PG
Vokeo Island	PG
Wuvulu Island	PG
Balambanan	PH
Batangas City	PH
Cebu City	PH
Cotabato	PH
Davao City	PH
Fortune Island	PH
General Santos City	PH
Iloilo City	PH
Nabutas Point	PH
Subic	PH
Zamboanga City	PH

Port Name	CountryCode
Mayaguez	PR
Portimão	PT
Viana De Castelo	PT
Malakal	PW
Honiara	SB
Noro	SB
Pipisala	SB
Sasafe	SB
Tulagi	SB
Freetown, SL	SL
Sierra Leone	SL
Songkla	TH
Keelung	TW
Lin-Pein	TW
Liu Chiu	TW
Manado	TW
Shi	TW
Shin-Yuan	TW
Taiwan	TW
Tong-Kung	TW
Tungchiang	TW
Tungkang	TW
Ye-pu	TW
Arch Cape, OR	US
Channel Islands, CA	US
Garibaldi, OR	US
Grayland, WA	US
Kona	US
Koolina, HI	US
La Push, WA	US
Los Osos, CA	US
Ocean Park, WA	US
Reedsport, OR	US
Seaview, WA	US
Shelter Cove, CA	US
Tokeland, WA	US
Luanda	VU
Luganville	VU
Palekula	VU
Asua	WS
Fagasa	WS
Falealili	WS
Mauase	WS
Safotu	WS
Salailua	WS
Saleaula	WS
Sataua	WS
Satupaitea	WS

ANNEX 5 – Number of purse seiners and longliners in the RFV by year built, since 1970, and by flag



Note: RFV currently has 772 purse seiners and tuna purse seiners. 610 of these have a Year Built of 1970 or later and the distribution by current flag is depicted above. Note: Currently 142 purse seiners (13) and tuna purse seiners (129) are included in the RFV with a blank year built field.



Note: RFV currently lists 3630 longliners and tuna longliners. 3398 of these have a Year Built of 1970 or later and the distribution by current flag is depicted above. Note: Currently 215 longliners (13) and tuna longliners (205) are on the RFV with a blank year built field.



COMMISSION
Eleventh Regular Session
1 – 5 December 2014
Apia, SAMOA

**STANDARDS, SPECIFICATIONS AND PROCEDURES FOR THE WESTERN AND
CENTRAL PACIFIC FISHERIES COMMISSION RECORD OF FISHING VESSELS**

Conservation and Management Measure 2014-xx

Application

These SSPs shall apply to the record of fishing vessels established under Article 24(7) of the Convention and further specified in any conservation and management measures adopted in relation to such record.

These SSPs shall take effect six months after adoption by the WCPFC.

The WCPFC Record of Fishing Vessels

1. The WCPFC RFV shall consist of an electronic database that, at a minimum:
 - a. Is capable of depicting the current version of the RFV as a single table, in the structure and format shown in Attachment 1;
 - b. Is fully and readily searchable by public users, with the exception of any data deemed by the WCPFC to be non-public domain data and/or to be maintained only on the secure portion of the WCPFC web site;
 - c. Stores all historical data provided by CCMs and is capable of depicting the RFV as it was at any point in time in the past; and
 - d. Includes electronic photographs of the vessels on the RFV.

Responsibilities of CCMs

It shall be the responsibility of CCMs to:

2. Submit complete vessel record data to the WCFPC Secretariat that meet the structure and format specifications of Attachment 1, and submit vessel photographs that meet the specifications of Attachment 2; and
3. Submit vessel record data to the WCPFC Secretariat via one of the following modes:¹
 - a. Electronic transmission: Submittal via email or other electronic means of electronic data files that meet the electronic formatting specifications of Attachment 3; or
 - b. Manual transmission: Direct RFV data entry via the web portal maintained by the WCPFC Secretariat for this purpose (Attachment 4).

Responsibilities of the WCPFC Secretariat

It shall be the responsibility of the WCPFC Secretariat to:

4. Maintain and utilize the RFV in a manner consistent with the Convention, the WCFPC's conservation and management measures, and the adopted standards, specifications and procedures relating to the RFV;
5. Provide a stable, reliable, fully maintained and supported RFV, including ensuring adequate redundancy and back-up systems to avoid data loss and provide timely data recovery;
6. Ensure that vessel data, once received from CCMs, are not altered, manipulated, or interfered with in any way, except as necessary to incorporate such data into the RFV in accordance with these SSPs;
7. Design and maintain the RFV so that it is capable of depicting the current RFV in the structure and format specified in Attachment 1;
8. Design and maintain the RFV so that numerical data can be displayed and downloaded using common units of measurement;
9. Ensure that the RFV is continuously publicly available via the WCPFC web site, with the exception of any pieces of information deemed by the WCPFC to be non-public domain data and/or to be maintained only on the secure portion of the WCPFC web site;

¹ The Commission may consider additional modes of transmission, such as modes involving direct links between the Commission's and CCMs' databases.

10. Develop and maintain the technical and administrative systems needed to receive vessel data from CCMs via any of the following modes:
 - a. Electronic transmission: Submittal via email or other electronic means of electronic data files that meet the electronic format specifications of Attachment 3;
 - b. Manual transmission: Direct manual data entry by a CCM via a web portal that meets the specifications of Attachment 4;
11. Within 24 hours of the next WCPFC official business day following receipt of vessel record data from a CCM, acknowledge receipt of the data and indicate to the CCM whether the data meet the minimum data requirements (i.e., they include data for all the fields with “√” in the “Min.” column in Attachment 1) and structure and format specifications of Attachments 1 and 2 and, if applicable, whether they meet the electronic formatting specifications of Attachment 3;
12. Within 48 hours (for electronic data transmissions) or 24 hours (for manual data transmissions) of the next WCPFC official business day following receipt from a CCM of vessel record data that meet the minimum data requirements (i.e., they include data for all the fields with “√” in the “Min.” column in Attachment 1) and structure and format specifications of Attachments 1 and 2, and, if applicable, the electronic formatting specifications of Attachment 3, incorporate such data into the RFV;²
13. Provide for information on vessels’ “fished / did not fish” status for each year, as submitted by CCMs, to be integrated with the RFV insofar as being able to display, search, and analyze the information; and
14. Monitor and report annually to the TCC the performance of the RFV and its application and, as necessary, make recommendations for improvements or modifications to the system, standards, specifications or procedures established to support it, in order to ensure the RFV continues to function as a stable, secure, reliable, cost-effective, efficient, fully maintained and supported system.
15. Periodically recommend improvements to these SSPs, including, where appropriate, standards and codes that are consistent with those used in other international fora, such as the FAO and UN/CEFACT.

² Although vessels with only the minimum required data will be added to and maintained on the RFV, this does not relieve the responsible CCM of its obligations to provide all the data required under the WCPFC’s applicable conservation and management measures. The consequences of failing to provide such data will be specified outside of these SSPs, such as in the WCPFC’s compliance monitoring scheme.

Attachment 1. List of Fields in the WCPFC RFV and their Format and Content

Min. ³	Field name	Field format	Field description/instructions	Example	Ref. in CMMs
√	Submitted by CCM	Text	Country name – in two-letter ISO code format (ISO 3166; Attachment 7)	HR (<i>for Croatia</i>)	Implied in 2009-04 <u>2013-10</u> : 5/6
√	Data action code	Text	<p>This field is not for inclusion in the RFV itself, but must be used by CCMs in their data submissions</p> <p>Enter “ADDITION” for vessels <u>that have not been currently on the RFV that are to be added to the RFV; enter “RELISTING” for a vessel that has previously been on the RFV, but was deleted (delisted) at some stage and is to be reinstated on the RFV by the same submitting CCM</u>; enter “MODIFICATION” for vessels currently on the RFV the information for which is <u>being modified by the same submitting CCM</u>; enter <u>REFLAGGING (for a vessel that has previously been on the RFV, but was deleted (delisted) at some stage, and is to be reinstated on the RFV by a different submitted by CCM.)</u> or enter “DELETION” for vessels currently on the RFV that are to be removed from the RFV <u>by the same submitted by CCM.</u></p>	MODIFICATION	(Needed to instruct Secretariat/RFV of the changes to be made)

³ Fields marked “√” in this column together comprise the “minimum data requirements” for inclusion on the RFV, as described in paragraphs 11 and 12.

Min. ³	Field name	Field format	Field description/instructions	Example	Ref. in CMMs
√	VID	Number (integer)	This number, generated automatically by the RFV upon inclusion of a vessel, must be provided for vessels being deleted or modified; if the vessel is being added to the RFV (i.e., it is not currently on the RFV), enter otherwise leave blank if it is ADDITION. "NONE"	10503	(Needed to match vessels)
√	Name of the fishing vessel	Text	Name of the fishing vessel as indicated on flag State registration, in UPPER CASE	SEA MAPLE II	2009-01 2013-10: 6(a)
√	Flag of the fishing vessel	Text Enter the country name in two-letter ISO code format (ISO 3166; Attachment 7)	Country name – in two-letter ISO code format (ISO 3166; Attachment 7)	HR (<i>for Croatia</i>)	Implied in 2009-01 2013-10: 5/6
√	Registration number	Text	Alphanumeric registration identifier assigned by the flag State, as indicated on flag State registration, in UPPER CASE	XX123	2009-01 2013-10: 6(a)
√	WCPFC Identification Number (WIN)	Text	Vessel identifier assigned by flag State in accordance with CMM 2004-03, in UPPER CASE	ABC1234	2009-01 2013-10: 6(a)
√	Previous names (if known)	Text If multiple previous vessel names, separate entries with “;”	List of previous names of the vessel, in UPPER CASE, if known by the CCM - If the CCM knows that the vessel has no previous names, enter “NONE” - If the CCM does not know if the vessel has any previous names,	ALPHA DRAGON ALPHA DRAGON;SEA MAPLE I	2009-01 2013-10: 6(a)

Min. ³	Field name	Field format	Field description/instructions	Example	Ref. in CMMs
			enter "NONE KNOWN"		
√	Port of registry	Text	Enter <u>name-UN/LOCODE</u> of the city (port) of vessel registration <u>if available, otherwise use code at Attachment 8 (to come).</u>	<u>FJSUV</u> Murmansk	2009-01 <u>2013-10</u> : 6(a)
√	Name of the owner or owners	Text If multiple owners, separate entries with “;” If company, enter full name of the company If personal name, enter last/family name, first/given name(s) (separated by a comma)		Sea Maple LLC Doe, John;Gomez, Steven	2009-01 <u>2013-10</u> : 6(b)
√	Address of the owner or owners	Text Separate components of each address with “;” If more than one address, separate addresses with “;”		1234 Ebony Ln, Honolulu, HI 12345, USA 1234 Ebony Ln, Honolulu, HI 12345, USA;4321 Ynobe Rd, Honolulu, HI 54321, USA	2009-01 <u>2013-10</u> : 6(b)
√	Name of the master	Text Enter last/family name, first/given name(s) (separated by a comma)		Doe, John Doe, John;Doe, Jill	2009-01 <u>2013-10</u> : 6(c)

Min. ³	Field name	Field format	Field description/instructions	Example	Ref. in CMMs
		If multiple masters, separate entries with “;”			
	Nationality of the master	Text Enter the country name in two-letter ISO code format (ISO 3166; Attachment 7) If multiple masters, separate entries with “;”	List the nationality of the master of the vessel	HR (<i>for Croatia</i>) HR;HR	2009-01 2013-10: 6(c)
√	Previous flag (if any)	Text Enter the country name in two-letter ISO code format (ISO 3166; Attachment 7) If multiple previous flags, separate entries with “;”	List previous flag(s) of the vessel, if any -If vessel has no previous flags, enter “NONE”	NONE	2009-01 2013-10: 6(d)
√	International Radio Call Sign	Text Enter without any spaces or punctuation	International radio call sign assigned to the vessel, in UPPER CASE without spaces - If the vessel has not been assigned an IRCS, enter “NONE”	ABC1234	2009-01 2013-10: 6(e)
√	Vessel communication types and numbers (Inmarsat A, B and C numbers and satellite telephone number)	Text Enter: communication type: x: number/address: x: service type: x. If multiple communication devices, separate entries with “;”	- Enter descriptions of each of any communication devices on board the vessel that use Inmarsat A, B or C or that have a satellite telephone number - If no such communication devices are on board, enter “NONE”	Voice Inmarsat mobile: 123456789; Inmarsat C: satellite telephone number: 123456789	2009-01 2013-10: 6(f)

Min. ³	Field name	Field format	Field description/instructions	Example	Ref. in CMMs
√	Colour photograph of the vessel	Text Enter the name of the electronic data file, using the following format: [WIN]_[Vessel name]_[date of photograph: dd.mmm.yyyy].[extension] (jpg or tif)	File name of vessel photograph	XXX123_SEA MAPLE_01.Jul.2010.jp g	2009-04 2013-10: 6(g)
√	Where the vessel was built	Text Enter the country name in two-letter ISO code format (ISO 3166; Attachment 7)	Country where the vessel was built, as indicated on flag State registration or other appropriate documentation	LT (<i>for Lithuania</i>)	2009-04 2013-10: 6(h)
	When the vessel was built	Number (four-digit integer)	Year in which the vessel was built, as indicated on flag State registration or other appropriate documentation	1994	2009-04 2013-10: 6(h)
√	Type of vessel	Text	- Enter the single most appropriate vessel type listed in the WCFPC List of Vessel Types (Attachment 5), <u>use the FAO abbreviation</u> exactly as written	<u>LLT</u> (<i>for Tuna longliners</i>)	2009-04 2013-10: 6(i)
	Normal crew complement	Number (integer)	The number of crew members normally on board the vessel, including officers	6	2009-04 2013-10: 6(j)
	Type of fishing method or methods	Text If multiple fishing methods, separate entries with “;”	The type(s) of fishing gear used by the vessel Enter all the fishing gears listed in the WCFPC List of Fishing Gears that are used, or intended to be used, to harvest HMS (Attachment 6), <u>use the FAO abbreviation</u> exactly as written, or <u>leave blank</u> if the vessel is not	<u>LLD</u> (<i>for Drifting longlines</i>)	2009-04 2013-10: 6(k)

Min. ³	Field name	Field format	Field description/instructions	Example	Ref. in CMMs
			used to harvest fish; enter “not a fish harvester”		
√	Length	Number (decimal)		50	2009-01 <u>2013-10</u> : 6(1)
√	Type of length	Text	Description of type of length. - If overall length <u>or length overall</u> , enter “ overall <u>OVERALL</u> ”; - If registered length, enter “ <u>REGISTERED</u> ”; - If between perpendiculars, enter “ <u>BETWEENPP</u> ”; - If waterline length, enter “ <u>WATERLINE</u> ” - If other type, enter the type	OVERALL WATERLINE <u>REGISTERED</u> <u>BETWEENPP</u>	2009-01 <u>2013-10</u> : 6(1)
√	Unit of length	Text	Enter “m” for meters or “ft” for feet	m	2009-01 <u>2013-10</u> : 6(1)
	Moulded depth	Number (decimal)		7	2009-01 <u>2013-10</u> : 6(m)
✗	Unit of depth	Text	Enter “m” for meters or “ft” for feet	m	2009-01 <u>2013-10</u> : 6(m)
√	Beam	Number (decimal)		7	2009-01 <u>2013-10</u> : 6(n)
√	Unit of beam	Text	Enter “m” for meters or “ft” for feet	m	
√	Gross registered tonnage (GRT) or gross tonnage (GT)	Number (decimal)		138	2009-01 <u>2013-10</u> : 6(o)
√	Type of tonnage	Text	Enter “GRT” for gross registered tonnage or “GT” for gross tonnage	GT	2009-01 <u>2013-10</u> : 6(o)

Min. ³	Field name	Field format	Field description/instructions	Example	Ref. in CMMs
	Power of main engine or engines	Number (decimal)		350	2009-01 2013-10 : 6(p)
	Unit of power of main engine or engines	Text	Enter "HP" for horsepower, "KW" for kilowatts, or "PS" for continental horsepower, also known as Pferdestärke	HP	2009-01 2013-10 : 6(p)
	Freezer type(s)	Text If multiple freezer types, separate entries with ";"	The type(s) of devices used to freeze the catch on board the vessel Enter one or more of the following: Brine, Blast, Plate, Tunnel, RSW, Ice, Other: [specify type]	Brine Ice;Blast	2009-01 2013-10 : 6(q)
	Freezing capacity	Text If multiple freezer types entered in Freezer type(s) field, separate corresponding multiple entries here with ";" and ensure that the entries are in the same sequence as in the Freezer type(s) field	A measure of the capacity to freeze the catch, expressed in terms of the amount of fish frozen per unit time or the nominal freezing capacity of the freezer units If no freezing capacity, enter "0"	100 2;5 0	2009-01 2013-10 : 6(q)
	Units of freezing capacity	Text If multiple freezer types entered in Freezer type(s) field, separate corresponding multiple entries here with ";" and ensure that the entries are in the same sequence as in the Freezer type(s) field	If no freezing capacity, enter "NA"	nominal mt mt/day;mt/day NA	2009-01 2013-10 : 6(q)

Min. ³	Field name	Field format	Field description/instructions	Example	Ref. in CMMs
	Number of freezer units	Text If multiple freezer types entered in Freezer type(s) field, separate corresponding multiple entries here with “;” and ensure that the entries are in the same sequence as in the Freezer type(s) field	The number of freezing units on board the vessel (e.g., the number of ice-making machines, brine chillers, or blast freezers)	2 1;2 0	2009-01 <u>2013-10</u> : 6(q)
	Fish hold capacity	Number (decimal)	The total amount of fish capable of being stored on the vessel, excluding bait and fish kept for crew consumption, measured by either volume or weight	100	2009-01 <u>2013-10</u> : 6(q)
	Units of fish hold capacity	Text	Enter “CM” for cubic meters or “MT” for metric tonnes	CM	2009-01 <u>2013-10</u> : 6(q)
	Form of the authorization granted by the flag State	Text	Enter the name or description of the license, permit or authorization, such as the name of the issuing authority Enter “not applicable” if the vessel is not authorized by its flag State to be used for fishing for HMS beyond areas of national jurisdiction (i.e., not authorized to fish on the high seas)	High seas fishing permit	2009-01 <u>2013-10</u> : 6(r)
	Authorization number granted by the flag State	Text	Enter the unique identifier assigned to the authorization, if any, and enter “NONE” if the authorization does not have a unique identifier Enter “not applicable” if the vessel is not authorized by its flag	XX123	2009-01 <u>2013-10</u> : 6(r)

Min. ³	Field name	Field format	Field description/instructions	Example	Ref. in CMMs
			State to be used for fishing for HMS beyond areas of national jurisdiction		
	Any specific areas in which authorized to fish	Text	<p>Enter a description of any specific areas in the WCPFC Area in which the authorization is limited</p> <p>Enter “No specific areas” if the authorization is not limited to any specific areas within the WCPFC Area</p> <p>Enter “not applicable” if the vessel is not authorized by its flag State to be used for fishing for HMS beyond areas of national jurisdiction</p>	No specific areas	2009-01 2013-10: 6(r)
	Any specific species for which authorized to fish	Text	<p>Enter a description of any specific HMS for which the authorization is limited</p> <p>Enter “No specific species” if the authorization is not limited to any specific HMS</p> <p>Enter “not applicable” if the vessel is not authorized by its flag State to be used for fishing for HMS beyond areas of national jurisdiction</p>	<p>No specific species</p> <p>All HMS except Pacific bluefin tuna</p>	2009-01 2013-10: 6(r)
√	Start of period of validity of authorization	Date (dd-mmm-yyyy)	Leave blank if the vessel is not authorized by its flag State to be used for fishing for HMS beyond areas of national jurisdiction	01-Jul-2010	2009-01 2013-10: 6(r)

Min. ³	Field name	Field format	Field description/instructions	Example	Ref. in CMMs
√	End of period of validity of authorization	Date (dd-mmm-yyyy)	Leave blank if the vessel is not authorized by its flag State to be used for fishing for HMS beyond areas of national jurisdiction	30-Jun-2011	2009-04 <u>2013-10</u> : 6(r)
	Authorized to tranship on the high seas	Text	Enter “yes” if the responsible CCM has made an affirmative determination under para 37 of CMM 2009-06 and has authorized the vessel to be used for transshipping HMS on the high seas in the Convention Area, and the authorization is currently valid; otherwise, enter “no”	Yes	2009-06: 34
	Purse seine vessel authorized to tranship at sea	Text	Enter “yes” if the vessel is a purse seine vessel that has been granted an exemption by the WCPFC to engage in transshipping at sea in the WCPFC Area and has been authorized to do so by the responsible CCM, and the exemption and authorization are currently valid; enter “no” if the vessel is a purse seine vessel that has not been granted such exemption and authorization; or enter “not applicable” if the vessel is not a purse seine vessel	No	2009-06: 29-30
√	Charter – CCM-flagged vessel	Text	Enter “charter”, “lease” or a descriptor of similar mechanism if paragraph 2 of CMM 2012-05 applies to the vessel; otherwise, enter “not applicable” Note: In the case of vessels to which paragraph 2 of CMM 2012-05 applies, the flag CCM is responsible for including the vessel on its record of fishing	Charter	2012-05: 2

Min. ³	Field name	Field format	Field description/instructions	Example	Ref. in CMMs
			vessels and submitting the required information to the ED		
√	Charter – non-CCM-flagged carrier or bunker	Text	<p>Enter “charter”, “lease” or a descriptor of similar mechanism if paragraph 41 of CMM 2009-01<u>2013-10</u> (carrier or bunker flagged to non-CCM) applies to the vessel; otherwise, enter “not applicable”</p> <p>Note: In the case of vessels to which paragraph 41 of CMM 2009-01<u>2013-10</u> applies (carriers and bunkers flagged to non-CCMs), the host CCM is responsible for including the vessel on its record of fishing vessels and submitting the required information to the ED</p>	Charter	2009-01 <u>2013-10</u> : 41
√	Host CCM	Text	If the vessel is under charter, lease or a similar mechanism and paragraph 41 of CMM 2009-01 <u>2013-10</u> or paragraph 2 of CMM 2012-05 applies to it, enter the name of the chartering/host CCM in two-letter ISO code format (ISO 3166; Attachment 7); otherwise, enter “ not applicable ” <u>leave blank</u>	AT (<i>for Austria</i>)	2009-01 <u>2013-10</u> : 41 2012-05: 2
√	Name of charterer	Text If multiple charterers, separate entries with “;” If company, enter full name	If vessel is under charter, lease or similar mechanism and paragraph 41 of CMM 2009-01 <u>2013-10</u> or paragraph 2 of CMM 2012-05 applies to it, enter the name of the charterer; otherwise, <u>leave</u>	Sea Maple LLC Doe, John;Gomez, Steven	2009-01 <u>2013-10</u> : 41 2012-05: 2

Min. ³	Field name	Field format	Field description/instructions	Example	Ref. in CMMs
		of the company If personal name, enter last/family name, first/given name(s) (separated by a comma)	blank enter “not applicable”		
√	Address of charterer	Text Separate components of each address with “, ” If more than one address, separate addresses with “;”	If vessel is under charter, lease or similar mechanism and paragraph 41 of CMM 2009-01 <u>2013-10</u> or paragraph 2 of CMM 2012-05 applies to it, enter the address of the charterer; otherwise <u>leave blank</u> , enter “not applicable”	1234 Ebony Ln, Honolulu, HI 12345, USA 1234 Ebony Ln, Honolulu, HI 12345, USA;4321 Ynobe Rd, Honolulu, HI 54321, USA	2009-01 <u>2013-10</u> : 41 2012-05: 2
	Start date of charter	Date (dd-mmm-yyyy)	If vessel is under charter, lease or similar mechanism and paragraph 41 of CMM 2009-01 <u>2013-10</u> or paragraph 2 of CMM 2012-05 applies to it, insert the start date of the charter, lease or other mechanism; otherwise, leave blank	30-Jun-2011	2009-01 <u>2013-10</u> : 41 2012-05: 2
	Expiration date of charter	Date (dd-mmm-yyyy)	If vessel is under charter, lease or similar mechanism and paragraph 41 of CMM 2009-01 <u>2013-10</u> or paragraph 2 of CMM 2012-05 applies to it, insert the date of expiration of the charter, lease or other mechanism; otherwise, leave blank	30-Jun-2016	2009-01 <u>2013-10</u> : 41 2012-05: 2
	Reason for deletion	Text	This field need not be included in the single-table depiction of the RFV, but must be used by CCMs in their data submissions Enter one of the following: “Voluntary relinquishment or	Voluntary relinquishment or non- renewal	2009-01 <u>2013-10</u> : 7(c)

Min. ³	Field name	Field format	Field description/instructions	Example	Ref. in CMMs
			non-renewal”, “Withdrawal”, “No longer entitled to fly flag”, “Scrapping, decommissioning or loss”, “Other: [specify reason]”, or “Not applicable” (if the vessel is not being deleted)		
√	<u>IMO or LR number</u>	<u>Number (integer)</u>	<u>The IMO ship identification number is made of the three letters “IMO” followed by the seven-digit number assigned to all ships by IHS Fairplay (formerly known as Lloyds Register-Fairplay). Enter the seven-digit number, otherwise should be left blank.</u> <u>From 1 January 2016, this becomes a minimum data requirement for fishing vessels authorized to be used for fishing in the Convention Area beyond the flag CCM’s area of national jurisdiction and that are at least 100 GT or 100 GRT in size (CMM 2013-10 footnote 4)</u>	<u>1234567</u>	<u>CMM 2013-10 6(s)</u>
√	<u>Previous “Submitted by CCM”</u>	<u>Text</u>	<u>A minimum data requirement only where data action code “REFLAGGING” is entered, otherwise for “ADDITION”, “MODIFICATION”, “RELISTING” or “DELETION” should be left blank.</u> <u>Enter country name – in two-letter ISO code format (ISO 3166; Attachment 7)</u>	<u>HR (for Croatia)</u>	<u>(Needed to match vessels being reflagged)</u>

Min. ³	Field name	Field format	Field description/instructions	Example	Ref. in CMMs
√	<u>Previous WCPFC Identification Number (WIN)</u>	<u>Text</u>	<p><u>A minimum data requirement only where data action code “REFLAGGING” is entered, otherwise for “ADDITION”, “MODIFICATION”, “RELISTING” or “DELETION” should be left blank.</u></p> <p><u>Enter vessel identifier assigned by previous flag CCM in accordance with CMM 2004-03, in UPPER CASE</u></p>	<u>ABC1234</u>	<u>(Needed to match vessels being reflagged)</u>

Attachment 2. Vessel Photograph Specifications

The photographs submitted to the WCFPC Secretariat for vessels on the RFV must meet all the specifications listed below. If the appearance of the vessel materially changes after a submission of a photograph (including, but not limited to, the vessel is painted another color, the vessel is renamed, or the vessel undergoes a structural modification) or if the photograph becomes more than five years old, a new photograph must be submitted.

The photograph must:⁴

1. be in full color
2. show the vessel in its current form and appearance
3. show a stem-to-stern side view of the vessel
4. clearly and legibly display the vessel name and WIN
5. be no older than five years
6. be in the form of a single electronic file with the following attributes:
 - a. in jpg or tiff file format;
 - b. a resolution of at least 150 pixels per inch at a size of 6 by 8 inches;
 - c. a size no greater than 500 kilobytes (kB); and
 - d. named using the following naming convention: [WIN]_[vessel name]_[date of photograph (dd.mmm.yyyy)].jpg/tif (e.g., XXX123_SEA MAPLE_01.Jul.2010.jpg).

Attachment 3. Electronic Formatting Specifications

These specifications describe the electronic files that CCMs must provide if they choose to submit information via the electronic transmission mode (paragraph 3.a).

A) File type

The information must be provided in one of the following formats:

- ~~Microsoft Excel file, or~~
- ~~Microsoft Access database file~~

B) File name

The name of the file must be: XX_RFV_UPDATES_DDMMYYYY.ssss

where:

- XX – two letter ISO country code (Attachment 7) of the CCM providing the file
- DDMMYYYY – the date of the provision of the file
- ssss – the standard file suffix (xls or xlsx if Excel file; ~~mdb or acedb if Access file~~)

⁴ These photograph specifications, with the exception of items 1 and 6.d, do not have to be met until 1 January 2017.

For example:

AU_RFV_UPDATES_11082013.xlsx (Excel file provided by Australia, on 11 August 2013)

C) File content

The RFV update file must contain only the vessels to be added to or deleted from the RFV, or whose details are being updated (i.e., the file must not include vessels for which no changes are being made). The type of change required for a particular vessel must be indicated by the “Data Action Code” (text) field, which must consist of one of the following values:

- “ADDITION” (for a vessel ~~not currently~~that has not been on the RFV (active or previously delisted), to be added to the RFV),
- “MODIFICATION” (for a vessel currently on the RFV and which is to be modified by the current submitted by CCM and to remain on the RFV),
- “RELISTING” (for a vessel that has previously been on the RFV, but was deleted (delisted) at some stage, and is to be reinstated on the RFV by the same submitted by CCM) or
- “DELETION” (for a vessel to be removed from the RFV by the same submitted by CCM).

For a ~~modification~~MODIFICATION and RELISTING, all the minimum data requirement fields for the vessel must be completed in the record so that the fields to be updated can be clearly identified. For an ADDITION, all minimum data requirement fields with the exception of the VID must be completed. For a DELETION, all minimum data requirement fields at a minimum, the following fields must be completed in the record: VID, name of the fishing vessel, flag of the fishing vessel, registration number, WCPFC Identification Number, and reason for deletion must be completed.

*Note: for Data Action Code “REFLAGGING” the RFV updates must be made using the web portal interface for manual transmission mode (paragraph 3.b).

D) File structure

Each record in the electronic file represents a single vessel. Each record must have the structure specified in Attachment 1, including the same sequence of fields.

Sample MS Excel ~~and MS Access~~ files with the proper formats are available from the Secretariat.

Attachment 4. Web Portal Specifications

These specifications provide details on the web portal interface that the WCPFC Secretariat will maintain to support CCMs’ submission of information via the manual transmission mode (paragraph 3.b).

The WCPFC Secretariat will provide a web portal interface for authorised RFV personnel of CCMs to directly enter and provide updates to RFV data for their vessels, and where applicable chartered vessels. Access to the web portal will be secure, and will require authorised RFV personnel to log in using a CCM-specific user name and password.

The web portal will be hosted on:

<https://intra.wcpfc.int/Lists/Vessels/Active%20Vessels%20by%20CCM.aspx>
<https://intra.wcpfc.int/Lists/Vessels/Stats.aspx>

This web portal will be designed to meet the standards and specifications of Attachment 1 and the SSPs, and where data relate to a specific list of alternative categories that is determined by the WCPFC Secretariat, this will be provided where possible as a drop-down menu option. In other instances, the option of numerical entries or text entries will be possible. There will be a capability for photos to be uploaded and updated.

*Note: This is the mechanism that must be used for data action code “REFLAGGING” (for a vessel that has previously been on the RFV, but was deleted (delisted) at some stage, and is to be reinstated on the RFV by a different submitted by CCM.) For REFLAGGING all the minimum data requirement fields for the vessel must be completed in the online portal, as well as the two additional data requirement fields (previous submitted CCM and previous WIN), so that the vessel to be reflagged is correctly identified.

After submission of a change or entry to the RFV via the web portal, each change or entry will be checked by the WCPFC Secretariat for consistency with the SSPs before being incorporated into the RFV. The CCM user will be promptly notified as to whether a given entry or change was incorporated into the RFV, and if not, the nature of the problem.

Attachment 5. WCPFC List of Vessel Types (based on the FAO ISSCFV)

Vessel Types	<u>Abbreviation to be used</u>
Trawlers	<u>TO</u>
Side trawlers	<u>TS</u>
Side trawlers wet-fish	<u>TSW</u>
Side trawlers freezer	<u>TSF</u>
Stern trawlers	<u>TT</u>
Stern trawlers wet-fish	<u>TTW</u>
Stern trawlers factory	<u>TTP</u>
Outrigger trawlers	<u>TU</u>
Trawler nei	<u>TOX</u>
Seiners	<u>SO</u>
Purse seiners	<u>SP</u>
North American type	<u>SPA</u>
European type	<u>SPE</u>
Tuna purse seiners	<u>SPT</u>

Seiner netters	<u>SN</u>
Seiner nei	<u>SOX</u>
Dredgers	<u>DO</u>
Using boat dredge	<u>DB</u>
Using mechanical dredge	<u>DM</u>
Dredgers nei	<u>DOX</u>
Lift netters	<u>NO</u>
Using boat operated net	<u>NB</u>
Lift netters net	<u>BOX</u>
Gillnetters	<u>GO</u>
Trap setters	<u>WO</u>
Pot vessels	<u>WOP</u>
Trap setters nei	<u>WOX</u>
Liners	<u>LO</u>
Handliners	<u>LH</u>
Longliners	<u>LL</u>
Tuna longliners	<u>LLT</u>
Pole and line vessels	<u>LP</u>
Japanese type	<u>LPJ</u>
American type	<u>LPA</u>
Trollers	<u>LT</u>
Liners nei	<u>LOX</u>
Squid jigging line vessel	<u>JIG</u>
Vessels using pumps for fishing	<u>PO</u>
Multipurpose vessels	<u>MO</u>
Seiner-handliners	<u>MSN</u>
Trawler-purse seiners	<u>MTS</u>
Trawler-drifters	<u>MTG</u>
Multipurpose vessels nei	<u>MOX</u>
Recreational fishing vessels	<u>RO</u>
Fishing vessels not specified	<u>FX</u>
Motherships	<u>HO</u>
Salted-fish Motherships	<u>HSS</u>
Factory Motherships	<u>HSF</u>
Tuna Motherships	<u>HST</u>
Motherships for two-boat purse seining	<u>HSP</u>
Motherships nei	<u>HOX</u>
Factory longliner	<u>LL</u>
Freezer longliner	<u>LL</u>
Fish carriers	<u>FO</u>
Hospital ships	<u>KO</u>
Protection and survey vessels	<u>BO</u>
Fishery research vessels	<u>ZO</u>
Fishery training vessels	<u>CO</u>
Non-fishing vessels nei	<u>VOX</u>

Bunker vessels	<u>VOB</u>
<u>Harpoon</u>	<u>HA</u>

Attachment 6. WCPFC List of Fishing Gears (based on the FAO ISSCFG)

Fishing Gears	<u>Abbreviation to be used</u>
With purse lines (purse seine)	<u>PS</u>
<u>- one boat operated purse seines</u>	<u>PS1</u>
- two boat operated purse seines	<u>PS2</u>
Without purse lines (lampara)	<u>LA</u>
<u>Beach seines</u>	<u>SB</u>
Boat or vessel seines	<u>SV</u>
- Danish seines	<u>SDN</u>
- Scottish seines	<u>SSC</u>
- Pair seines	<u>SPR</u>
Seine nets (not specified)	<u>SX</u>
Portable lift nets	<u>LNP</u>
Boat-operated lift nets	<u>LNB</u>
Shore-operated stationary lift nets	<u>LNS</u>
Lift nets (not specified)	<u>LN</u>
Set gillnets (anchored)	<u>GNS</u>
Driftnets	<u>GND</u>
Encircling gillnets	<u>GNC</u>
Fixed gillnets (on stakes)	<u>GNF</u>
Trammel nets	<u>GTR</u>
Combined gillnets-trammel nets	<u>GTN</u>
Gillnets and entangling nets (not specified)	<u>GEN</u>
Gillnets (not specified)	<u>GN</u>
Handlines and pole-lines (hand operated)	<u>LHP</u>
Handlines and pole-lines (mechanized)	<u>LHM</u>
Set longlines	<u>LLS</u>
Drifting longlines	<u>LLD</u>
Longlines (not specified)	<u>LL</u>
Trolling lines	<u>LTL</u>
Hooks and lines (not specified)	<u>LX</u>
Harpoons	<u>HAR</u>
Miscellaneous gear	<u>MIS</u>
Recreational fishing gear	<u>RG</u>

Attachment 7. Country Codes (ISO 3166)

Country Name	Code
Afghanistan	AF
Albania	AL
Algeria	DZ
American Samoa	AS
Andorra	AD
Angola	AO
Anguilla	AI
Antarctica	AQ
Antigua and Barbuda	AG
Argentina	AR
Armenia	AM
Aruba	AW
Australia	AU
Austria	AT
Azerbaijan	AZ
Bahamas	BS
Bahrain	BH
Bangladesh	BD
Barbados	BB
Belarus	BY
Belgium	BE
Belize	BZ
Benin	BJ
Bermuda	BM
Bhutan	BT
Bolivia	BO
Bosnia and Herzegovina	BA
Botswana	BW
Bouvet Island	BV
Brazil	BR
British Indian Ocean Territory	IO
Brunei Darussalam	BN
Bulgaria	BG
Burkina Faso	BF
Burundi	BI
Cambodia	KH
Cameroon	CM
Canada	CA

Country Name	Code
Cape Verde	CV
Cayman Islands	KY
Central African Republic	CF
Chad	TD
Chile	CL
China	CN
Chinese Taipei	TW
Christmas Island	CX
Cocos (Keeling) Islands	CC
Colombia	CO
Commonwealth of the Northern Mariana Islands	MP
Comoros	KM
Congo	CG
Congo, The Democratic Republic of the	CD
Cook Islands	CK
Costa Rica	CR
Cote D'ivoire	CI
Croatia	HR
Cuba	CU
Cyprus	CY
Czech Republic	CZ
Denmark	DK
Djibouti	DJ
Dominica	DM
Dominican Republic	DO
East Timor	TP
Ecuador	EC
Egypt	EG
El Salvador	SV
Equatorial Guinea	GQ
Eritrea	ER
Estonia	EE
Ethiopia	ET
European Union	EU
Falkland Islands (Malvinas)	FK
Faroe Islands	FO
Federated States of Micronesia	FM
Fiji	FJ

Country Name	Code
Finland	FI
France	FR
French Guiana	GF
French Polynesia	PF
French Southern Territories	TF
Gabon	GA
Gambia	GM
Georgia	GE
Germany	DE
Ghana	GH
Gibraltar	GI
Greece	GR
Greenland	GL
Grenada	GD
Guadeloupe	GP
Guam	GU
Guatemala	GT
Guinea	GN
Guinea-Bissau	GW
Guyana	GY
Haiti	HT
Heard and Mc Donald Islands	HM
Honduras	HN
Hong Kong	HK
Hungary	HU
Iceland	IS
India	IN
Indonesia	ID
Iran (Islamic Republic of)	IR
Iraq	IQ
Ireland	IE
Israel	IL
Italy	IT
Jamaica	JM
Japan	JP
Jordan	JO
Kazakhstan	KZ
Kenya	KE
Kiribati	KI
Korea (Democratic Republic of)	KP

Country Name	Code
Korea (Republic of)	KR
Kuwait	KW
Kyrgyzstan	KG
Lao People's Democratic Republic	LA
Latvia	LV
Lebanon	LB
Lesotho	LS
Liberia	LR
Libyan Arab Jamahiriya	LY
Liechtenstein	LI
Lithuania	LT
Luxembourg	LU
Macau	MO
Macedonia (the Former Yugoslav Republic of)	MK
Madagascar	MG
Malawi	MW
Malaysia	MY
Maldives	MV
Mali	ML
Malta	MT
Marshall Islands	MH
Martinique	MQ
Mauritania	MR
Mauritius	MU
Mayotte	YT
Mexico	MX
Moldova (Republic of)	MD
Monaco	MC
Mongolia	MN
Montserrat	MS
Morocco	MA
Mozambique	MZ
Myanmar	MM
Namibia	NA
Nauru	NR
Nepal	NP
Netherlands	NL
Netherlands Antilles	AN
New Caledonia	NC
New Zealand	NZ

Country Name	Code
Nicaragua	NI
Niger	NE
Nigeria	NG
Niue	NU
Norfolk Island	NF
Norway	NO
Oman	OM
Pakistan	PK
Palau	PW
Panama	PA
Papua New Guinea	PG
Paraguay	PY
Peru	PE
Philippines	PH
Pitcairn	PN
Poland	PL
Portugal	PT
Puerto Rico	PR
Qatar	QA
Reunion	RE
Romania	RO
Russian Federation	RU
Rwanda	RW
Saint Kitts And Nevis	KN
Saint Lucia	LC
Saint Vincent and the Grenadines	VC
Samoa	WS
San Marino	SM
Sao Tome and Principe	ST
Saudi Arabia	SA
Senegal	SN
Serbia	RS
Seychelles	SC
Sierra Leone	SL
Singapore	SG
Slovakia (Slovak Republic)	SK
Slovenia	SI
Solomon Islands	SB
Somalia	SO
South Africa	ZA

Country Name	Code
South Georgia and the South Sandwich Islands	GS
Spain	ES
Sri Lanka	LK
St. Helena	SH
St. Pierre and Miquelon	PM
Sudan	SD
Suriname	SR
Svalbard and Jan Mayen Islands	SJ
Swaziland	SZ
Sweden	SE
Switzerland	CH
Syrian Arab Republic	SY
Tajikistan	TJ
Tanzania (United Republic of)	TZ
Thailand	TH
Timor-Leste	TL
Togo	TG
Tokelau	TK
Tonga	TO
Trinidad and Tobago	TT
Tunisia	TN
Turkey	TR
Turkmenistan	TM
Turks and Caicos Islands	TC
Tuvalu	TV
Uganda	UG
Ukraine	UA
United Arab Emirates	AE
United Kingdom	GB
United States Minor Outlying Islands	UM
United States of America	US
Uruguay	UY
Uzbekistan	UZ
Vanuatu	VU
Vatican City State (Holy See)	VA
Venezuela	VE
Vietnam	VN
Virgin Islands (British)	VG
Virgin Islands (U.S.)	VI
Wallis and Futuna	WF

Country Name	Code
Western Sahara	EH
Yemen	YE
Zaire	ZR

Country Name	Code
Zambia	ZM
Zimbabwe	ZW

Attachment 8. WCPFC RFV Port Codes for Ports without a UN/LOCODE

To be completed by WCPFC Secretariat in advance of 30 days before WCPFC11.