



**SCIENTIFIC COMMITTEE**

**TENTH REGULAR SESSION**

Majuro, Republic of the Marshall Islands

6-14 August 2014

---

**ESTIMATES OF ANNUAL CATCHES IN THE WCPFC STATISTICAL AREA**

---

**WCPFC-SC10-2014/ST IP-1 rev. 1**

Paper prepared by

Oceanic Fisheries Programme (OFP)  
Secretariat of the Pacific Community (SPC)  
Noumea, New Caledonia

## Introduction

Estimates of annual catches in the WCPFC Statistical Area (Figure 1) are presented for target tuna species, i.e., albacore (*Thunnus alalunga*) bigeye (*Thunnus obesus*), skipjack (*Katsuwonus pelamis*) and yellowfin (*Thunnus albacares*), and major billfish species, i.e., black marlin (*Makaira indica*), blue marlin (*Makaira mazara*), striped marlin (*Tetrapturus audax*) and swordfish (*Xiphias gladius*). Estimates of catches of southern bluefin tuna (*Thunnus maccoyii*) are compiled by the Commission for the Conservation of Southern Bluefin Tuna (CCSBT).

## Target Tuna Species

Tables 1–7 and Figures 2 and 3 present estimates of annual catches of target tunas in the WCPFC Statistical Area. For a breakdown of recent catch estimates by gear and flag, see WCPFC (2013). For discussion regarding trends, see Williams & Terawasi (2014).

Recent studies using observer data (e.g. Lawson, 2007, Lawson, 2010, Lawson, 2012, Hampton and Williams, 2011) show that the logsheet-reported catch, mainly for associated sets, should contain higher quantities of yellowfin and bigeye tuna that have been misreported as skipjack tuna. Purse-seine catch estimates that have been adjusted with species compositions determined from observer grab samples corrected for size selectivity bias (see Lawson, 2010, Lawson, 2012 and Lawson, 2013) are presented as the official purse-seine catch estimates in Table 5. All composite tables and figures referring to purse-seine species catch are consistent with the Table 5 estimates of purse-seine catches of skipjack, yellowfin and bigeye tuna.

Tables 7–10 present estimates of annual catches of target tunas in the WCPO Area and the EPO Area (Figure 1) by gear type. Tables 11–13 present estimates of annual catches of target tunas for the WCPO, the EPO and the Pacific Ocean by species. Table 14 and 15, and Figures 4 and 5 present global catches of target tunas, by species and ocean area, respectively.

## Tuna Discards

Observer data have been used to determine the discard rates for albacore, bigeye and yellowfin and bigeye caught by longliners (Table 16) and skipjack, yellowfin and bigeye caught by purse seiners (Table 17).

Tuna discards by longliners in the WCPFC Statistical Area during 1994–2013 were estimated by applying discard rates by flag and year, determined from observer data, to tuna species catch estimates, by flag and year, and then summing the tuna discards (by species) across all flags. Discard rates for flag/year combinations where there were insufficient data (defined as (i) less than 10 observer trips or (ii) less than 500 fish samples available), were substituted with discard rates determined for year (with all flags combined). The total discard rate for the three target tuna species caught by longliners during the period was 2.2%. During 2013, the estimated tuna discard was 2.8% and based on available observer data, most of the bigeye and yellowfin tuna discards comprised of fish less than 85 cm (Figures 6 and 7).

Tuna discards by purse seiners in the WCPFC Statistical Area during 1995–2013 were estimated by applying discard rates by flag, year and school association (unassociated and associated), determined from observer data, to tuna species catch estimates, by flag, year and school association, and then summing the tuna discards (by species) across all flags. Discard rates for flag/year/school association combinations where there were insufficient data (defined as (i) less than 5 observer trips or (ii) less than 1,000 mt of catch observed), were substituted with discard rates determined for school association (with all years/flags combined) for years prior to 2008, and substituted with discard rates determined for year/school association (with all flags combined) for years since 2008. This method was used since an analysis of variance of discard rates for skipjack, yellowfin and bigeye caught by purse seiners indicated that species, school association and flag, but not year, were significant predictors. However, in recent years, there have been management measures (CMM 2009-02) introduced to restrict the discard of tuna which means that the year effect has been considered in the estimation process for recent years. The total discard rate for the three target tuna species caught by purse seiners during the period was 2.5%, with an estimated 1.0% discarded in 2013, the lowest in

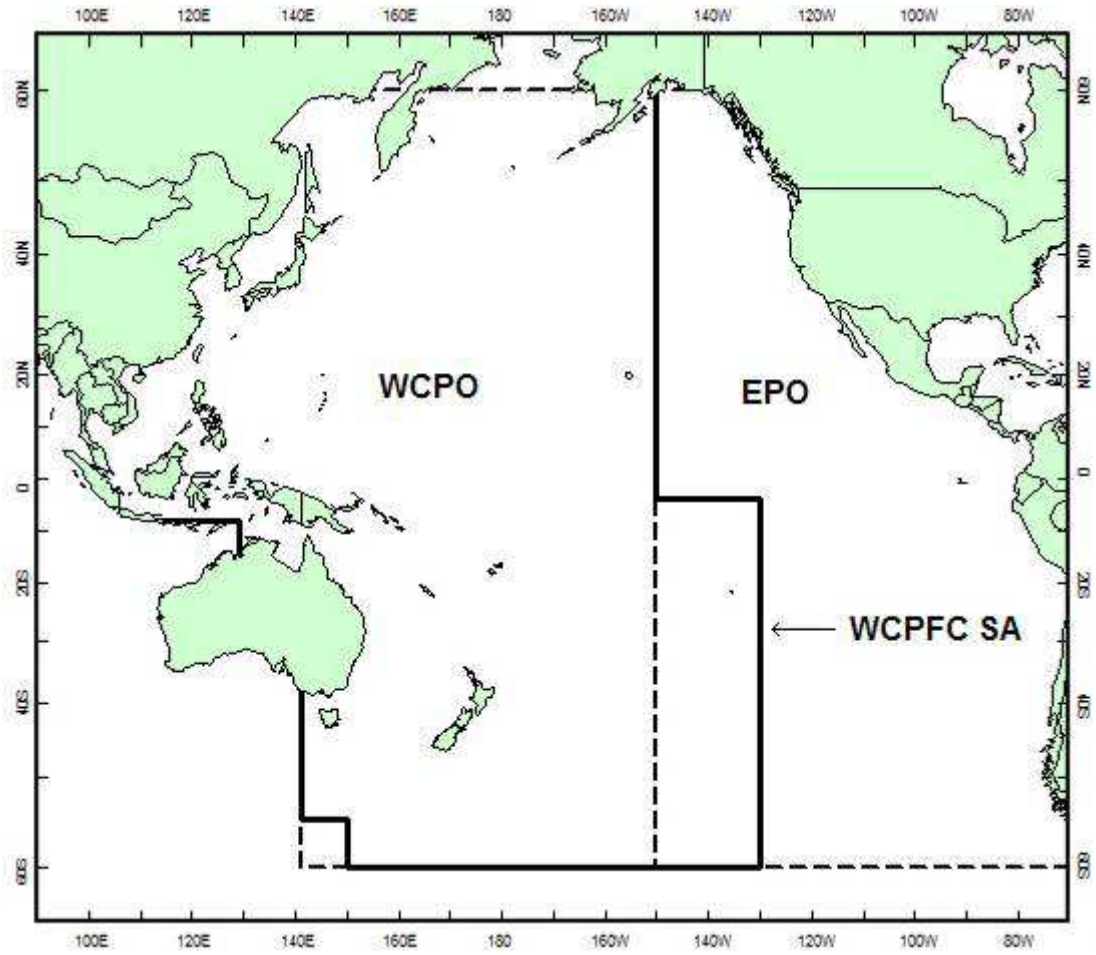
this time series. [Note that the reporting of purse-seine discards by vessel is a requirement under CMM 2009-02 and is independent to the estimates produced in this paper].

### **Major Billfish Species**

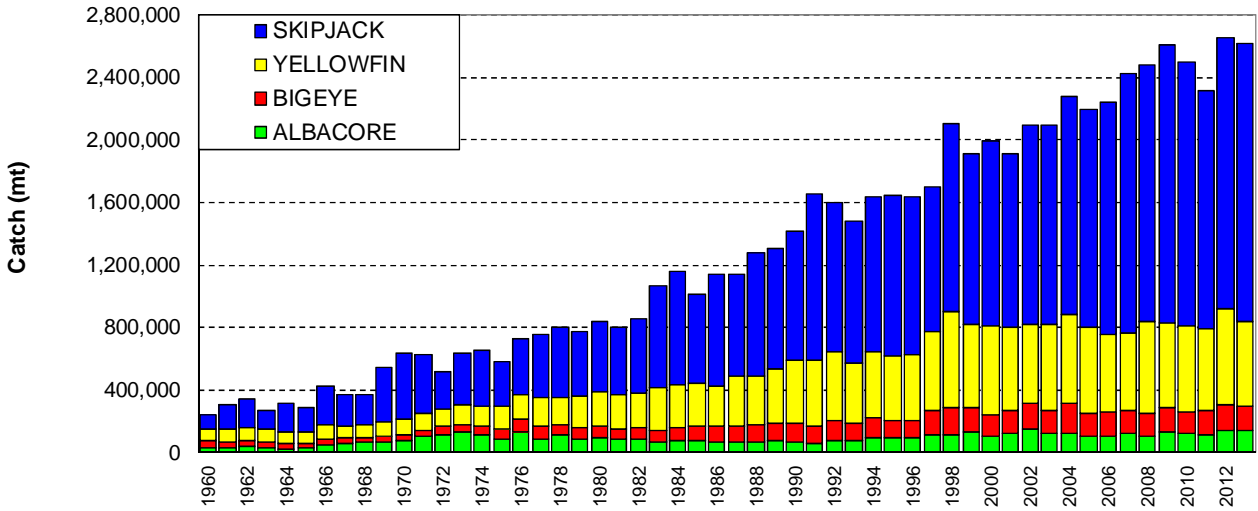
Table 18 presents estimates of commercial catches of the four major billfish species by gear type. Table 19 and Figure 8 present estimates of the major billfish catches for all gear types combined. Tables 20 and 21 present estimates of commercial catches of striped marlin and swordfish in the WCPFC Statistical Area north and south of the equator respectively. Table 22 present estimates of commercial catches of albacore, striped marlin and swordfish in the Pacific Ocean, south of the equator.

## REFERENCES

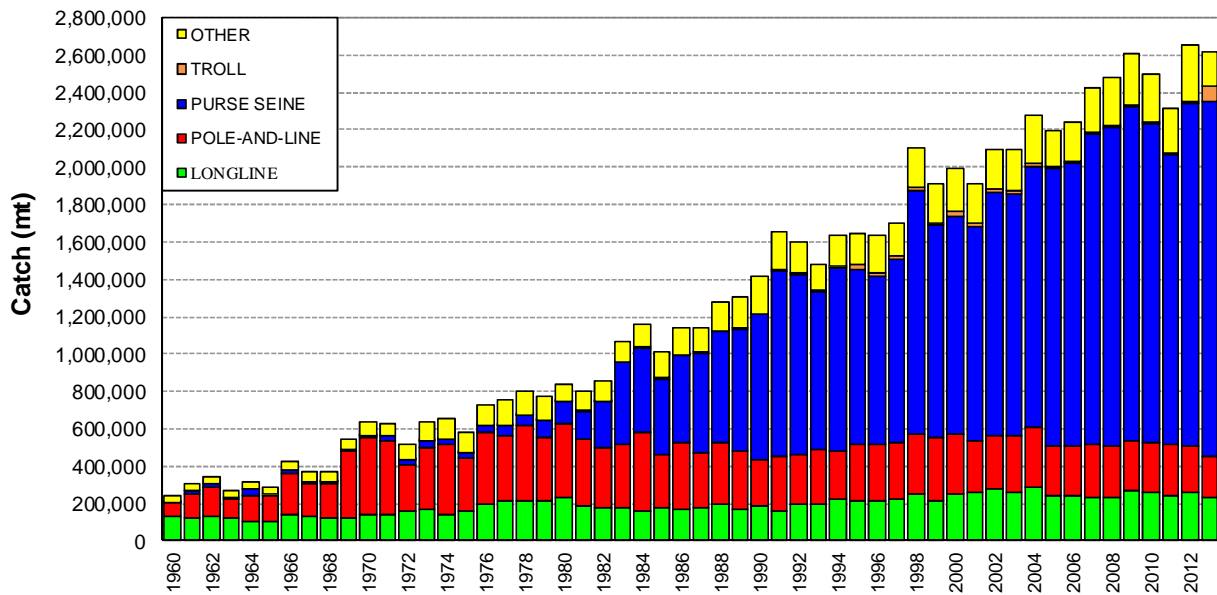
- Hampton J. & P.G. Williams 2011. Misreporting of purse seine catches of skipjack and yellowfin-bigeye on logsheets. Working Paper ST-WP-2. Seventh Regular Session of the Scientific Committee of the WCPFC. Pohnpei, FSM. 9<sup>th</sup>–17<sup>th</sup> August 2011.
- Harley S. & P.G. Williams 2013. Fishery indicators for bigeye, skipjack, and yellowfin tunas in the WCPO, and swordfish in the southern WCPO. Working Paper SA-WP-6. Ninth Regular Session of the Scientific Committee of the WCPFC. Pohnpei, FSM. 6–14 August 2013. Oceanic Fisheries Programme, Secretariat of the Pacific Community, Noumea, New Caledonia
- Lawson, T.A. 2007. Further analysis of the proportion of bigeye in ‘yellowfin plus bigeye’ caught by purse seiners in the WCPFC Statistical Area. Information Paper ST-IP-5. Third Regular Session of the WCPFC Scientific Committee, 13–24 August 2006, Honolulu, Hawaii, United States of America. Oceanic Fisheries Programme, Secretariat of the Pacific Community, Noumea, New Caledonia.
- Lawson, T.A. 2010. Update on the estimation of selectivity bias based on paired spill and grab samples collected by observers on purse seiners in the Western and Central Pacific Ocean. Working Paper ST-WP-2. Sixth Regular Session of the Scientific Committee of the WCPFC. Nuku'alofa, Tonga. 10–19 August 2010.
- Lawson, T.A. 2012. Estimation of the species composition of the catch by purse seiners in the Western and Central Pacific Ocean using grab samples and spill samples collected by observers. Working Paper ST-WP-3. Eighth Regular Session of the Scientific Committee of the WCPFC. Busan, Republic of Korea. 7–15 August 2012.
- Lawson, T.A. 2013. Estimation of the species composition of the catch by purse seiners in the Western and Central Pacific Ocean – a response to recent independent reviews. Working Paper ST-WP-3. Ninth Regular Session of the Scientific Committee of the WCPFC. Pohnpei, FSM. 6–14 August 2013..
- WCPFC. 2013. WCPFC Tuna Fishery Yearbook, 2012. Western and Central Pacific Fisheries Commission, Pohnpei, Federated States of Micronesia.
- Williams, P. & P. Terawasi. 2014. Overview of tuna fisheries in the Western and Central Pacific Ocean, Including Economic Conditions – 2013. Working Paper GN-WP-1. Ninth Regular Session of the Scientific Committee of the WCPFC. Majuro, Republic of the Marshall Islands. 6–14 August 2014. Oceanic Fisheries Programme, Secretariat of the Pacific Community, Noumea, New Caledonia and Pacific Islands Forum Fisheries Agency, Honiara, Solomon Islands.



**Figure 1. WCPFC Statistical Area (WCPFC SA), the Western and Central Pacific Ocean (WCPO) Area and the Eastern Pacific Ocean (EPO) Area**



**Figure 2. Catches of tuna in the WCPFC Statistical Area, by species**



**Figure 3. Catches of tuna in the WCPFC Statistical Area, by gear type**

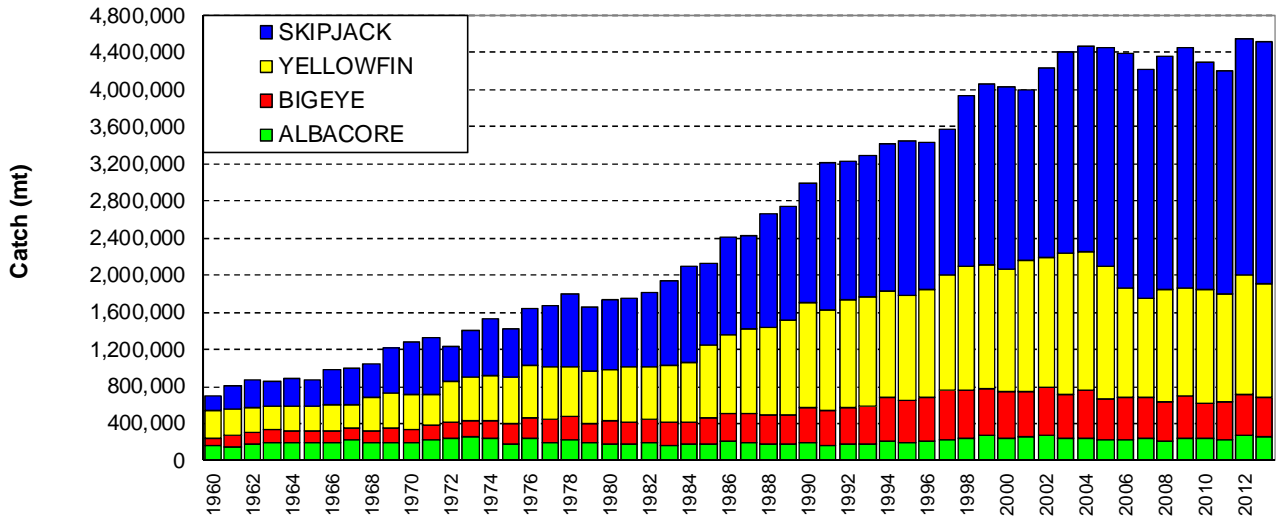


Figure 4. Global catches of tuna, by species

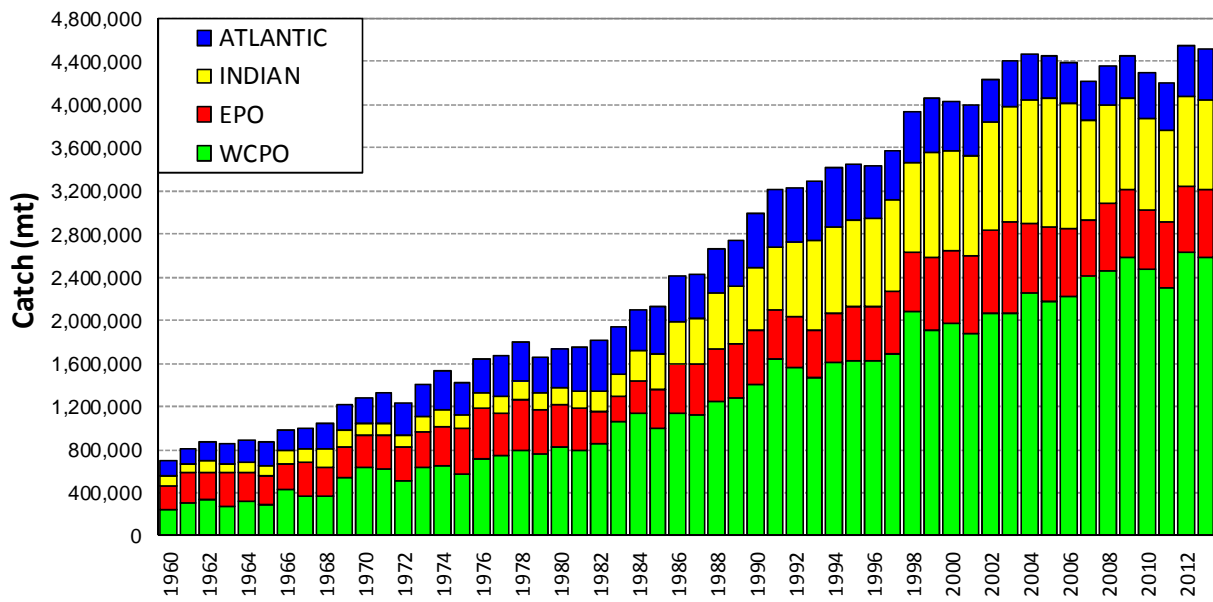
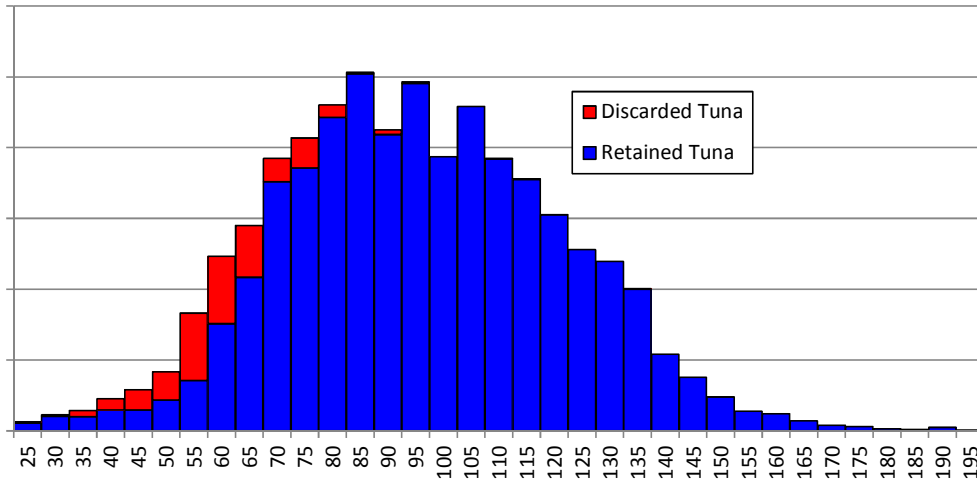
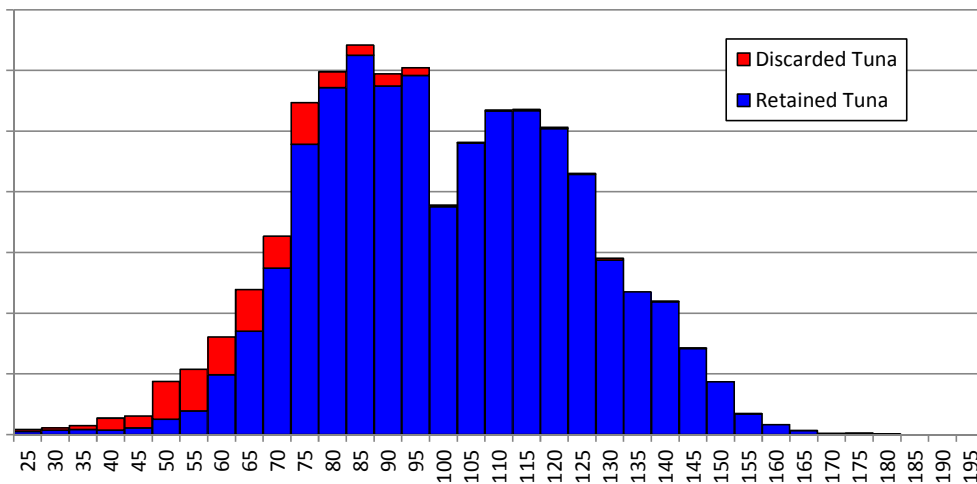


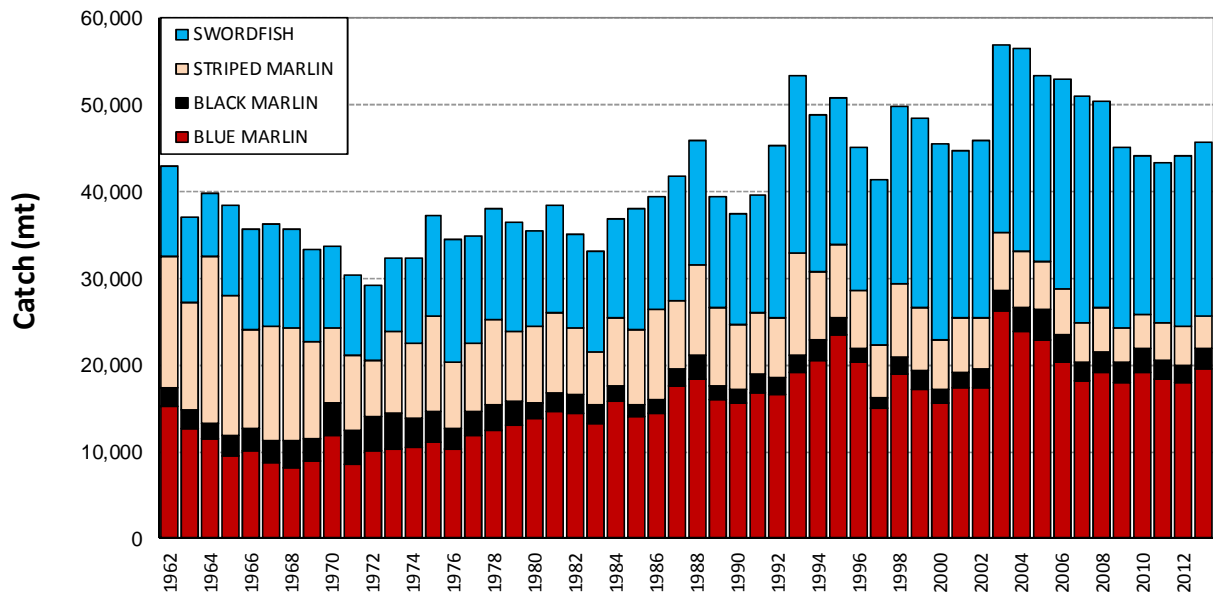
Figure 5. Global catches of tuna, by ocean area



**Figure 6. Estimated Longline bigeye tuna discard by size categories, 2013.**  
(Based on available observer data)



**Figure 7. Estimated Longline yellowfin tuna discard by size categories, 2013.**  
(Based on available observer data)



**Figure 9. Commercial catches of major billfish species in the WCPFC Statistical Area**



**Table 1. Catches of target tunas in the WCPFC Statistical Area, by species**

YEAR	ALBACORE		BIGEYE		SKIPJACK		YELLOWFIN		TOTAL
	TONNES	%	TONNES	%	TONNES	%	TONNES	%	
1960	31,463	13	45,025	19	89,938	37	73,667	31	240,093
1961	32,922	11	39,380	13	156,736	51	75,438	25	304,476
1962	37,602	11	36,868	11	181,624	53	83,944	25	340,038
1963	26,815	10	44,346	16	122,703	46	75,756	28	269,620
1964	26,687	8	32,391	10	182,918	58	74,154	23	316,150
1965	28,735	10	31,333	11	155,221	54	73,635	25	288,924
1966	52,284	12	33,187	8	249,514	58	93,099	22	428,084
1967	58,822	16	36,749	10	204,840	55	68,929	19	369,340
1968	64,213	17	30,426	8	195,031	52	81,904	22	371,574
1969	72,106	13	34,361	6	351,031	64	87,278	16	544,776
1970	74,350	12	40,102	6	423,398	66	99,169	16	637,019
1971	100,737	16	43,233	7	380,853	60	105,152	17	629,975
1972	109,655	21	57,156	11	237,764	46	116,210	22	520,785
1973	131,149	21	48,855	8	328,748	52	128,522	20	637,274
1974	115,162	18	52,808	8	356,200	54	131,545	20	655,715
1975	84,651	15	69,360	12	288,310	49	141,391	24	583,712
1976	132,947	18	82,752	11	357,207	49	153,111	21	726,017
1977	83,171	11	83,315	11	403,610	54	184,009	24	754,105
1978	111,161	14	66,513	8	449,032	56	177,645	22	804,351
1979	86,007	11	73,626	10	412,551	53	199,436	26	771,620
1980	95,156	11	72,392	9	448,703	54	217,594	26	833,845
1981	88,095	11	63,949	8	430,877	54	221,637	28	804,558
1982	89,496	10	71,651	8	472,889	55	221,770	26	855,806
1983	65,988	6	77,324	7	643,724	60	277,586	26	1,064,622
1984	74,540	6	85,586	7	720,406	62	274,664	24	1,155,196
1985	77,060	8	88,821	9	561,676	56	281,588	28	1,009,145
1986	71,757	6	93,873	8	714,041	62	263,939	23	1,143,610
1987	63,645	6	109,525	10	654,291	57	312,724	27	1,140,185
1988	67,948	5	110,867	9	791,190	62	307,240	24	1,277,245
1989	73,533	6	109,599	8	766,392	59	353,625	27	1,303,149
1990	63,872	4	126,687	9	833,622	59	396,222	28	1,420,403
1991	58,322	4	112,767	7	1,061,171	64	422,918	26	1,655,178
1992	74,452	5	131,573	8	953,033	60	437,086	27	1,596,144
1993	77,496	5	111,776	8	916,101	62	378,539	26	1,483,912
1994	96,461	6	129,609	8	986,730	60	419,280	26	1,632,080
1995	91,750	6	116,686	7	1,026,452	62	411,650	25	1,646,538
1996	91,140	6	118,408	7	1,017,622	62	413,320	25	1,640,490
1997	112,900	7	160,177	9	926,087	54	504,168	30	1,703,332
1998	112,465	5	177,636	8	1,206,837	57	608,508	29	2,105,446
1999	131,066	7	157,236	8	1,097,005	57	528,714	28	1,914,021
2000	101,171	5	144,669	7	1,184,400	59	567,462	28	1,997,702
2001	121,561	6	147,865	8	1,106,469	58	533,737	28	1,909,632
2002	147,793	7	172,283	8	1,278,503	61	496,923	24	2,095,502
2003	122,949	6	143,235	7	1,281,670	61	550,798	26	2,098,652
2004	122,343	5	190,606	8	1,399,813	61	569,478	25	2,282,240
2005	105,135	5	148,712	7	1,396,284	64	548,705	25	2,198,836
2006	104,986	5	157,590	7	1,481,726	66	494,396	22	2,238,698
2007	126,701	5	139,774	6	1,663,309	69	496,481	20	2,426,265
2008	104,966	4	150,619	6	1,641,653	66	579,106	23	2,476,344
2009	135,476	5	154,251	6	1,779,307	68	535,006	21	2,604,040
2010	126,548	5	135,140	5	1,691,579	68	547,094	22	2,500,361
2011	116,296	5	154,072	7	1,525,884	66	520,077	22	2,316,329
2012	142,820	5	167,387	6	1,729,318	65	612,797	23	2,652,322
2013	143,102	5	158,662	6	1,784,091	68	535,656	20	2,621,511

**Table 2. Catches of target tunas in the WCPFC Statistical Area, by gear type**

YEAR	LONGLINE		POLE-AND-LINE		PURSE SEINE		TROLL		OTHER		TOTAL
	TONNES	%	TONNES	%	TONNES	%	TONNES	%	TONNES	%	
1960	129,874	54	73,800	31	5,224	2	0	0	31,195	13	240,093
1961	123,330	41	132,070	43	14,540	5	0	0	34,536	11	304,476
1962	128,804	38	157,412	46	18,875	6	0	0	34,947	10	340,038
1963	122,263	45	98,628	37	11,934	4	0	0	36,795	14	269,620
1964	102,481	32	143,323	45	29,012	9	0	0	41,334	13	316,150
1965	103,955	36	134,621	47	8,621	3	0	0	41,727	14	288,924
1966	145,278	34	218,900	51	16,913	4	0	0	46,993	11	428,084
1967	128,047	35	174,774	47	14,508	4	5	0	52,006	14	369,340
1968	120,136	32	183,954	50	15,143	4	14	0	52,327	14	371,574
1969	122,806	23	354,784	65	9,483	2	0	0	57,703	11	544,776
1970	141,360	22	409,754	64	16,222	3	50	0	69,633	11	637,019
1971	143,625	23	392,914	62	24,511	4	0	0	68,925	11	629,975
1972	161,533	31	242,745	47	29,030	6	268	0	87,209	17	520,785
1973	166,399	26	330,841	52	36,269	6	484	0	103,281	16	637,274
1974	145,192	22	370,499	57	29,548	5	898	0	109,578	17	655,715
1975	164,049	28	279,663	48	27,685	5	646	0	111,669	19	583,712
1976	198,013	27	382,627	53	40,770	6	25	0	104,582	14	726,017
1977	218,413	29	345,257	46	53,492	7	621	0	136,322	18	754,105
1978	212,059	26	407,482	51	52,040	6	1,686	0	131,084	16	804,351
1979	211,221	27	344,799	45	90,102	12	814	0	124,684	16	771,620
1980	230,624	28	398,498	48	113,265	14	1,489	0	89,969	11	833,845
1981	191,732	24	348,917	43	153,907	19	2,118	0	107,884	13	804,558
1982	179,574	21	316,457	37	249,233	29	2,552	0	107,990	13	855,806
1983	175,498	16	342,287	32	436,510	41	949	0	109,378	10	1,064,622
1984	162,111	14	415,016	36	456,467	40	3,124	0	118,478	10	1,155,196
1985	177,722	18	287,892	29	403,251	40	3,468	0	136,812	14	1,009,145
1986	169,129	15	360,864	32	464,460	41	2,284	0	146,873	13	1,143,610
1987	179,965	16	294,879	26	531,142	47	2,350	0	131,849	12	1,140,185
1988	200,774	16	327,997	26	592,610	46	4,671	0	151,193	12	1,277,245
1989	170,876	13	311,981	24	646,441	50	8,687	1	165,164	13	1,303,149
1990	188,841	13	247,104	17	773,731	54	7,219	1	203,508	14	1,420,403
1991	160,889	10	290,006	18	993,150	60	8,004	0	203,129	12	1,655,178
1992	199,688	13	259,762	16	966,314	61	6,844	0	163,536	10	1,596,144
1993	195,377	13	293,014	20	845,647	57	4,612	0	145,262	10	1,483,912
1994	221,367	14	262,721	16	977,649	60	7,493	0	162,850	10	1,632,080
1995	217,417	13	298,301	18	939,173	57	23,585	1	168,062	10	1,646,538
1996	215,466	13	301,279	18	897,906	55	17,807	1	208,032	13	1,640,490
1997	226,375	13	298,666	18	981,360	58	18,732	1	178,199	10	1,703,332
1998	251,197	12	323,645	15	1,297,726	62	19,099	1	213,779	10	2,105,446
1999	219,024	11	338,480	18	1,131,141	59	13,476	1	211,900	11	1,914,021
2000	247,904	12	319,854	16	1,168,429	58	25,845	1	235,670	12	1,997,702
2001	264,291	14	272,483	14	1,144,443	60	17,329	1	211,086	11	1,909,632
2002	281,369	13	286,202	14	1,297,472	62	16,129	1	214,330	10	2,095,502
2003	261,346	12	303,905	14	1,292,288	62	19,875	1	221,238	11	2,098,652
2004	284,783	12	322,179	14	1,393,992	61	23,445	1	257,841	11	2,282,240
2005	244,114	11	266,735	12	1,479,329	67	13,293	1	195,365	9	2,198,836
2006	246,694	11	257,594	12	1,512,944	68	10,098	0	211,368	9	2,238,698
2007	234,804	10	284,661	12	1,655,501	68	9,249	0	242,050	10	2,426,265
2008	235,665	10	269,551	11	1,709,351	69	11,740	0	250,037	10	2,476,344
2009	269,469	10	264,350	10	1,785,827	69	9,898	0	274,496	11	2,604,040
2010	258,711	10	270,123	11	1,703,136	68	11,320	0	257,071	10	2,500,361
2011	244,330	11	275,195	12	1,549,061	67	11,973	1	235,770	10	2,316,329
2012	261,212	10	242,875	9	1,836,295	69	14,018	1	297,922	11	2,652,322
2013	230,073	9	221,022	8	1,898,090	72	88,870	3	183,456	7	2,621,511

**Table 3. LONGLINE catches in the WCPFC Statistical Area, by species**

YEAR	ALBACORE		BIGEYE		SKIPJACK		YELLOWFIN		TOTAL
	TONNES	%	TONNES	%	TONNES	%	TONNES	%	
1960	31,387	24	43,467	33	0	0	55,020	42	129,874
1961	32,647	26	37,517	30	0	0	53,166	43	123,330
1962	37,358	29	35,895	28	4	0	55,547	43	128,804
1963	26,538	22	42,540	35	0	0	53,185	44	122,263
1964	26,240	26	30,989	30	5	0	45,247	44	102,481
1965	28,603	28	29,848	29	11	0	45,493	44	103,955
1966	51,588	36	31,984	22	52	0	61,654	42	145,278
1967	58,208	45	33,632	26	124	0	36,083	28	128,047
1968	46,226	38	27,757	23	83	0	46,070	38	120,136
1969	38,478	31	32,571	27	130	0	51,627	42	122,806
1970	48,981	35	34,965	25	1,608	1	55,806	39	141,360
1971	46,025	32	38,359	27	1,475	1	57,766	40	143,625
1972	47,774	30	51,040	32	1,544	1	61,175	38	161,533
1973	59,835	36	42,412	25	1,861	1	62,291	37	166,399
1974	39,299	27	45,653	31	2,124	1	58,116	40	145,192
1975	31,180	19	61,488	37	1,919	1	69,462	42	164,049
1976	45,022	23	73,325	37	2,096	1	77,570	39	198,013
1977	48,789	22	72,083	33	3,127	1	94,414	43	218,413
1978	42,260	20	56,364	27	3,233	2	110,202	52	212,059
1979	36,295	17	63,837	30	2,179	1	108,910	52	211,221
1980	42,343	18	62,540	27	632	0	125,109	54	230,624
1981	47,272	25	46,594	24	756	0	97,110	51	191,732
1982	43,876	24	48,582	27	972	1	86,144	48	179,574
1983	36,784	21	46,316	26	2,144	1	90,254	51	175,498
1984	31,277	19	52,982	33	870	1	76,982	47	162,111
1985	38,012	21	58,635	33	1,108	1	79,967	45	177,722
1986	41,702	25	56,995	34	1,439	1	68,993	41	169,129
1987	33,398	19	68,838	38	2,329	1	75,400	42	179,965
1988	41,694	21	68,296	34	1,937	1	88,847	44	200,774
1989	30,147	18	64,925	38	2,507	1	73,297	43	170,876
1990	32,170	17	77,019	41	363	0	79,289	42	188,841
1991	35,459	22	61,043	38	885	1	63,502	39	160,889
1992	45,551	23	75,978	38	432	0	77,727	39	199,688
1993	56,183	29	66,577	34	573	0	72,044	37	195,377
1994	59,629	27	79,187	36	379	0	82,172	37	221,367
1995	60,388	28	68,138	31	598	0	88,293	41	217,417
1996	61,590	29	58,074	27	3,935	2	91,867	43	215,466
1997	72,643	32	68,612	30	4,070	2	81,050	36	226,375
1998	80,042	32	85,068	34	5,030	2	81,057	32	251,197
1999	68,834	31	74,978	34	4,208	2	71,004	32	219,024
2000	69,582	28	76,932	31	4,559	2	96,831	39	247,904
2001	85,022	32	78,688	30	5,059	2	95,522	36	264,291
2002	89,894	32	92,398	33	3,450	1	95,627	34	281,369
2003	78,794	30	83,034	32	3,824	1	95,694	37	261,346
2004	76,967	27	99,729	35	4,051	1	104,036	37	284,783
2005	83,069	34	77,447	32	1,084	0	82,514	34	244,114
2006	85,246	35	81,920	33	1,528	1	78,000	32	246,694
2007	80,170	34	79,388	34	1,175	1	74,071	32	234,804
2008	79,039	34	80,148	34	803	0	75,675	32	235,665
2009	99,128	37	77,920	29	1,219	0	91,202	34	269,469
2010	103,466	40	68,938	27	1,191	0	85,116	33	258,711
2011	85,817	35	73,101	30	1,124	0	84,288	34	244,330
2012	100,440	38	79,438	30	1,900	1	79,434	30	261,212
2013	100,666	44	62,641	27	1,267	1	65,499	28	230,073

**Table 4. POLE-AND-LINE catches in the WCPFC Statistical Area, by species**

YEAR	ALBACORE		BIGEYE		SKIPJACK		YELLOWFIN		TOTAL
	TONNES	%	TONNES	%	TONNES	%	TONNES	%	
1960	0	0	1,500	2	70,428	95	1,872	3	73,800
1961	0	0	1,800	1	127,011	96	3,259	2	132,070
1962	0	0	800	1	152,387	97	4,225	3	157,412
1963	0	0	1,800	2	94,757	96	2,071	2	98,628
1964	0	0	1,143	1	137,106	96	5,074	4	143,323
1965	0	0	1,254	1	129,933	97	3,434	3	134,621
1966	0	0	1,108	1	215,600	98	2,192	1	218,900
1967	0	0	2,803	2	168,846	97	3,125	2	174,774
1968	16,597	9	2,272	1	162,379	88	2,706	1	183,954
1969	32,148	9	1,675	0	315,795	89	5,166	1	354,784
1970	24,485	6	1,589	0	379,074	93	4,606	1	409,754
1971	53,451	14	931	0	333,284	85	5,248	1	392,914
1972	60,691	25	1,762	1	172,827	71	7,465	3	242,745
1973	68,908	21	1,258	0	253,217	77	7,458	2	330,841
1974	73,676	20	1,039	0	289,202	78	6,582	2	370,499
1975	52,257	19	1,334	0	218,271	78	7,801	3	279,663
1976	85,436	22	3,423	1	276,582	72	17,186	4	382,627
1977	32,034	9	3,325	1	294,641	85	15,257	4	345,257
1978	59,977	15	3,337	1	331,401	81	12,767	3	407,482
1979	44,762	13	2,540	1	285,859	83	11,638	3	344,799
1980	46,843	12	2,916	1	333,597	84	15,142	4	398,498
1981	27,426	8	3,382	1	296,065	85	22,044	6	348,917
1982	29,615	9	4,993	2	264,726	84	17,123	5	316,457
1983	21,098	6	5,077	1	298,928	87	17,184	5	342,287
1984	26,015	6	4,557	1	366,811	88	17,633	4	415,016
1985	20,714	7	5,529	2	238,932	83	22,717	8	287,892
1986	16,096	4	4,133	1	322,665	89	17,970	5	360,864
1987	19,091	6	4,602	2	252,142	86	19,044	6	294,879
1988	6,216	2	5,890	2	295,325	90	20,566	6	327,997
1989	8,629	3	6,131	2	275,088	88	22,133	7	311,981
1990	8,777	4	5,985	2	211,573	86	20,769	8	247,104
1991	7,117	2	3,929	1	259,778	90	19,182	7	290,006
1992	13,899	5	4,055	2	218,765	84	23,043	9	259,762
1993	12,871	4	4,505	2	255,152	87	20,486	7	293,014
1994	26,456	10	5,251	2	209,636	80	21,378	8	262,721
1995	21,120	7	6,228	2	247,744	83	23,209	8	298,301
1996	20,302	7	7,940	3	242,486	80	30,551	10	301,279
1997	32,259	11	6,563	2	236,999	79	22,845	8	298,666
1998	22,962	7	6,405	2	266,772	82	27,506	8	323,645
1999	50,507	15	5,856	2	255,330	75	26,787	8	338,480
2000	21,652	7	6,838	2	264,407	83	26,957	8	319,854
2001	29,467	11	5,905	2	212,668	78	24,443	9	272,483
2002	48,472	17	6,109	2	207,488	72	24,133	8	286,202
2003	36,126	12	5,296	2	238,179	78	24,304	8	303,905
2004	32,365	10	9,238	3	249,936	78	30,640	10	322,179
2005	16,162	6	6,851	3	216,715	81	27,007	10	266,735
2006	15,429	6	9,781	4	208,731	81	23,653	9	257,594
2007	37,785	13	7,296	3	213,010	75	26,570	9	284,661
2008	19,072	7	9,204	3	218,570	81	22,705	8	269,551
2009	31,193	12	7,916	3	201,323	76	23,918	9	264,350
2010	19,575	7	7,027	3	223,409	83	20,112	7	270,123
2011	25,734	9	5,655	2	206,960	75	36,846	13	275,195
2012	33,783	14	3,932	2	170,503	70	34,657	14	242,875
2013	33,783	15	4,906	2	160,723	73	21,610	10	221,022

**Table 5. PURSE SEINE catch estimates in the WCPFC Statistical Area, by species.**  
(original catches have been adjusted with species compositions determined from observer grab samples corrected for size selectivity bias)

YEAR	ALBACORE		BIGEYE		SKIPJACK		YELLOWFIN		TOTAL
	TONNES	%	TONNES	%	TONNES	%	TONNES	%	
1960	0	0	58	1	3,728	71	1,438	28	5,224
1961	7	0	63	0	11,693	80	2,777	19	14,540
1962	53	0	173	1	11,674	62	6,975	37	18,875
1963	59	0	6	0	9,592	80	2,277	19	11,934
1964	128	0	231	1	25,006	86	3,647	13	29,012
1965	11	0	201	2	4,657	54	3,752	44	8,621
1966	111	1	9	0	10,949	65	5,844	35	16,913
1967	89	1	61	0	10,940	75	3,418	24	14,508
1968	267	2	193	1	7,640	50	7,043	47	15,143
1969	521	5	53	1	5,036	53	3,873	41	9,483
1970	317	2	580	4	7,501	46	7,824	48	16,222
1971	902	4	700	3	13,665	56	9,244	38	24,511
1972	277	1	664	2	18,025	62	10,064	35	29,030
1973	1,353	4	736	2	19,235	53	14,945	41	36,269
1974	161	1	1,129	4	10,852	37	17,406	59	29,548
1975	159	1	1,326	5	13,101	47	13,099	47	27,685
1976	1,109	3	1,650	4	22,422	55	15,589	38	40,770
1977	669	1	1,953	4	34,602	65	16,268	30	53,492
1978	1,115	2	2,481	5	33,169	64	15,275	29	52,040
1979	125	0	2,283	3	58,371	65	29,323	33	90,102
1980	329	0	2,850	3	76,178	67	33,908	30	113,265
1981	252	0	9,349	6	89,815	58	54,491	35	153,907
1982	561	0	13,934	6	159,089	64	75,649	30	249,233
1983	350	0	21,227	5	292,992	67	121,941	28	436,510
1984	3,380	1	23,000	5	304,317	67	125,770	28	456,467
1985	1,533	0	18,482	5	267,730	66	115,506	29	403,251
1986	1,542	0	26,399	6	324,972	70	111,547	24	464,460
1987	1,205	0	30,533	6	341,118	64	158,286	30	531,142
1988	1,208	0	29,878	5	435,351	73	126,173	21	592,610
1989	2,521	0	31,096	5	430,116	67	182,708	28	646,441
1990	1,995	0	35,561	5	526,927	68	209,248	27	773,731
1991	2,652	0	38,448	4	708,783	71	243,267	24	993,150
1992	4,104	0	45,339	5	642,779	67	274,092	28	966,314
1993	2,889	0	35,024	4	582,319	69	225,415	27	845,647
1994	2,026	0	37,348	4	699,523	72	238,752	24	977,649
1995	1,177	0	33,910	4	687,469	73	216,617	23	939,173
1996	581	0	42,038	5	665,452	74	189,835	21	897,906
1997	1,068	0	77,072	8	589,540	60	313,680	32	981,360
1998	1,554	0	76,613	6	825,033	64	394,526	30	1,297,726
1999	6,872	1	67,339	6	731,229	65	325,701	29	1,131,141
2000	2,408	0	50,499	4	784,856	67	330,666	28	1,168,429
2001	974	0	53,832	5	777,639	68	311,998	27	1,144,443
2002	3,303	0	64,188	5	956,945	74	273,036	21	1,297,472
2003	627	0	45,065	3	925,167	72	321,429	25	1,292,288
2004	7,200	1	70,525	5	1,005,817	72	310,450	22	1,393,992
2005	850	0	59,649	4	1,049,021	71	369,809	25	1,479,329
2006	364	0	60,759	4	1,131,293	75	320,528	21	1,512,944
2007	5,682	0	47,802	3	1,285,330	78	316,687	19	1,655,501
2008	825	0	56,655	3	1,250,473	73	401,398	23	1,709,351
2009	2,077	0	63,024	4	1,405,241	79	315,485	18	1,785,827
2010	330	0	54,851	3	1,306,410	77	341,545	20	1,703,136
2011	480	0	69,465	4	1,167,704	75	311,412	20	1,549,061
2012	4,193	0	70,925	4	1,372,652	75	388,525	21	1,836,295
2013	4,193	0	82,151	4	1,455,786	77	355,960	19	1,898,090

**Table 6. Catches of target tunas in the WCPFC Statistical Area, by flag**

YEAR	AUSTRALIA	BELIZE	CANADA	CHINA	COOK ISLANDS	ECUADOR	EL SALVADOR	FEDERATED STATES OF MICRONESIA
1960	-	-	-	-	-	-	-	-
1961	-	-	-	-	-	-	-	-
1962	-	-	-	-	-	-	-	-
1963	-	-	-	-	-	-	-	-
1964	-	-	-	-	-	-	-	-
1965	-	-	-	-	-	-	-	-
1966	-	-	-	-	-	-	-	-
1967	-	-	-	-	-	-	-	-
1968	-	-	-	-	-	-	-	-
1969	-	-	-	-	-	-	-	-
1970	100	-	-	-	-	-	-	-
1971	100	-	-	-	-	-	-	-
1972	100	-	-	-	-	-	-	-
1973	100	-	-	-	-	-	-	-
1974	100	-	-	-	-	-	-	-
1975	2,000	-	-	-	-	-	-	-
1976	147	-	-	-	-	-	-	-
1977	131	-	-	-	-	-	-	-
1978	375	-	-	-	-	-	-	-
1979	100	-	-	-	-	-	-	-
1980	117	-	-	-	-	-	-	-
1981	357	-	-	-	-	-	-	-
1982	238	-	-	-	-	-	-	-
1983	230	-	-	-	-	-	-	-
1984	147	-	-	-	-	-	-	-
1985	18	-	-	-	-	-	-	-
1986	101	-	-	-	-	-	-	-
1987	1,455	-	-	-	-	-	-	-
1988	1,752	-	235	44	-	-	-	-
1989	2,836	-	235	144	-	-	-	-
1990	6,983	-	235	453	-	-	-	-
1991	9,380	-	235	1,007	-	-	-	11,338
1992	9,524	-	235	2,715	-	-	-	15,472
1993	7,212	-	235	6,419	-	-	-	16,908
1994	5,415	-	235	12,677	32	-	-	20,941
1995	6,288	54	235	10,586	63	-	-	6,759
1996	5,249	129	136	6,026	59	-	-	7,394
1997	7,550	77	149	3,664	-	-	-	8,254
1998	5,153	276	167	3,272	22	-	-	14,179
1999	7,551	211	253	7,515	56	-	-	10,881
2000	6,997	270	351	6,244	335	3,992	-	21,688
2001	5,279	7,143	206	9,947	206	1,057	599	17,646
2002	5,232	3,385	144	15,632	770	427	1,488	20,607
2003	5,809	2,697	-	42,210	2,462	1,562	74	30,829
2004	4,200	943	63	42,606	3,207	3,051	-	28,471
2005	3,093	1,056	72	62,734	3,125	5,193	-	28,302
2006	5,030	632	135	77,382	2,841	9,523	-	10,774
2007	4,404	595	27	73,698	3,266	9,187	6,025	15,440
2008	3,969	225	-	86,451	2,817	25,415	10,962	19,424
2009	3,646	190	-	119,639	2,054	4,428	8,824	21,154
2010	2,566	127	-	83,241	3,058	8,450	7,371	23,802
2011	2,924	220	1	105,275	3,636	18,045	12,226	28,785
2012	2,221	194	-	91,302	3,537	23,145	11,411	38,983
2013	2,221	252	-	121,299	1,897	21,442	13,273	27,053

Table 6 continued

YEAR	FIJI ISLANDS	FRENCH POLYNESIA	INDONESIA	JAPAN	KIRIBATI	REPUBLIC OF KOREA	MARSHALL ISLANDS	MEXICO
1960	-	-	7,415	206,606	-	744	-	-
1961	-	-	8,054	269,191	-	385	-	-
1962	-	-	8,749	302,176	-	708	-	-
1963	-	-	9,505	228,717	-	1,955	-	-
1964	-	-	10,327	270,506	-	2,527	-	-
1965	-	-	11,223	232,844	-	7,078	-	-
1966	-	-	12,198	355,838	-	13,405	-	-
1967	-	-	13,260	281,568	-	14,469	-	-
1968	-	-	14,417	273,603	-	10,794	-	-
1969	-	-	15,677	442,850	-	17,077	-	-
1970	-	-	17,600	505,452	-	16,927	-	-
1971	-	-	18,100	471,129	-	16,541	-	-
1972	-	-	28,600	341,854	-	17,678	-	-
1973	-	-	32,500	418,048	-	25,938	-	-
1974	12	-	33,779	429,014	-	14,105	-	-
1975	11	-	34,378	358,037	-	29,343	-	-
1976	742	-	33,375	474,987	-	44,464	-	-
1977	1,711	-	37,235	459,318	-	43,722	-	-
1978	2,524	-	40,024	513,391	-	33,102	-	-
1979	3,494	696	50,973	466,434	-	41,915	-	-
1980	2,496	936	54,788	522,844	1,812	46,096	-	-
1981	5,836	1,001	61,927	460,646	2,376	33,310	-	-
1982	4,428	1,034	66,101	501,943	2,269	39,684	-	-
1983	3,741	836	76,042	554,560	3,406	37,589	-	468
1984	4,572	1,250	85,993	639,034	3,843	33,293	-	6,600
1985	3,946	836	93,635	511,605	2,531	44,291	-	-
1986	3,125	961	93,649	590,885	3,226	63,034	-	-
1987	3,889	878	118,539	504,820	2,246	91,201	-	-
1988	3,891	715	136,319	599,082	3,284	113,653	-	-
1989	5,189	856	146,832	517,619	4,094	139,904	-	-
1990	3,830	2,109	152,776	471,098	2,407	204,399	-	-
1991	5,298	2,335	164,928	490,677	2,036	247,950	-	-
1992	4,790	2,019	195,843	472,795	2,363	213,553	9	-
1993	4,966	2,387	187,577	516,860	2,104	150,165	137	-
1994	5,937	2,804	214,665	473,786	3,131	226,531	48	-
1995	7,009	3,343	233,953	481,106	5,423	206,176	22	-
1996	6,803	3,583	346,418	417,584	6,645	174,948	-	-
1997	4,354	4,564	278,815	507,798	7,020	188,667	-	-
1998	4,013	5,710	379,215	543,367	9,389	247,929	-	-
1999	4,075	5,200	383,799	482,046	9,793	173,490	-	-
2000	9,660	6,833	367,337	498,958	14,726	207,498	7,560	-
2001	11,309	7,733	340,413	439,331	5,401	216,691	35,774	-
2002	11,551	7,347	334,679	451,896	9,830	254,593	38,952	-
2003	10,854	6,309	342,793	469,809	6,898	221,079	37,875	-
2004	17,312	5,496	446,237	441,599	6,661	212,655	46,676	-
2005	15,477	5,089	241,461	481,852	9,165	237,353	56,164	-
2006	15,472	5,938	277,210	445,977	6,724	274,859	42,348	-
2007	10,042	6,408	311,565	472,400	18,021	278,482	59,409	-
2008	13,627	5,673	324,755	432,795	18,374	275,132	33,013	-
2009	16,828	6,878	379,077	399,646	34,004	310,139	43,973	-
2010	12,545	6,250	346,891	430,223	38,946	300,213	57,225	-
2011	16,307	6,028	381,571	368,297	60,136	231,570	90,544	-
2012	14,978	7,271	434,420	395,506	77,010	290,293	72,422	-
2013	12,782	6,691	454,443	376,404	86,165	245,372	77,768	-

Table 6 continued

YEAR	NAURU	NEW CALEDONIA	NEW ZEALAND	NIUE	PALAU	PAPUA NEW GUINEA	PHILIPPINES	PORTUGAL
1960	-	-	-	-	-	-	20,585	-
1961	-	-	-	-	-	-	21,735	-
1962	-	-	-	-	-	-	22,957	-
1963	-	-	-	-	-	-	24,252	-
1964	-	-	-	-	1,166	-	25,626	-
1965	-	-	-	-	2,670	-	27,084	-
1966	-	-	-	-	2,686	-	28,632	-
1967	-	-	5	-	3,406	-	30,275	-
1968	-	-	14	-	5,056	-	32,021	-
1969	-	-	-	-	4,762	-	33,875	-
1970	-	-	50	-	8,082	2,428	52,000	-
1971	-	-	-	-	2,143	16,974	57,200	-
1972	-	-	268	-	1,519	13,130	60,700	-
1973	-	-	484	-	2,350	28,216	70,900	-
1974	-	-	899	-	6,808	41,630	81,188	-
1975	-	-	647	-	6,269	17,369	84,450	-
1976	-	-	25	-	5,323	32,921	73,653	-
1977	-	-	621	-	4,012	24,115	118,149	-
1978	-	-	1,701	-	9,694	48,859	87,319	-
1979	-	-	830	-	5,688	26,857	94,308	-
1980	-	-	1,519	-	6,576	33,994	77,506	-
1981	-	229	2,111	-	9,411	31,412	94,616	-
1982	-	868	2,436	-	4,053	-	104,047	-
1983	-	461	6,565	-	-	-	118,529	-
1984	-	150	7,005	-	-	2,744	105,217	-
1985	-	281	5,713	-	97	9,300	137,308	-
1986	-	367	6,793	-	131	-	145,098	-
1987	-	1,102	5,035	-	161	-	141,461	-
1988	-	1,092	3,923	-	157	-	124,785	-
1989	-	871	10,323	-	77	-	151,124	-
1990	-	1,730	7,120	-	88	-	202,214	-
1991	-	1,536	7,765	-	-	-	221,817	-
1992	-	1,092	4,524	-	213	-	165,652	-
1993	-	1,294	4,415	-	206	8	134,921	-
1994	-	1,355	8,513	-	184	1,381	172,558	-
1995	-	1,274	8,147	-	100	12,700	198,613	-
1996	-	1,201	10,194	-	100	10,572	205,004	-
1997	-	977	10,451	-	107	19,399	208,768	-
1998	-	1,543	15,154	-	100	50,727	235,586	-
1999	-	1,616	10,141	-	100	38,980	226,319	-
2000	11	1,662	18,918	-	240	68,818	234,520	-
2001	13	1,718	17,533	-	62	92,806	210,787	-
2002	7	1,926	38,574	-	4	124,704	226,863	-
2003	20	2,007	30,614	-	20	159,622	264,106	-
2004	3	2,189	33,886	6	35	225,441	271,760	-
2005	-	2,114	27,917	105	-	235,439	274,247	-
2006	-	1,807	27,409	286	-	233,170	291,564	-
2007	-	1,770	38,969	306	-	230,015	320,567	-
2008	3	1,993	33,878	435	-	205,681	360,187	-
2009	8	2,187	30,618	189	-	213,019	328,047	-
2010	4	2,488	26,950	110	-	208,253	285,594	-
2011	11	2,362	25,312	-	-	164,557	193,915	7
2012	11	2,337	21,661	-	-	240,054	233,386	18
2013	19	2,314	27,687	-	-	194,295	229,394	175



Table 6 continued

YEAR	RUSSIA	SAMOA	SENEGAL	SOLOMON ISLANDS	SPAIN	CHINESE TAIPEI	TONGA
1960	-	-	-	-	-	4,035	-
1961	-	-	-	-	-	4,485	-
1962	-	-	-	-	-	4,779	-
1963	-	-	-	-	-	4,642	-
1964	-	-	-	-	-	5,482	-
1965	-	-	-	-	-	7,524	-
1966	-	-	-	-	-	14,812	-
1967	-	-	-	-	-	25,911	-
1968	-	-	-	-	-	35,302	-
1969	-	-	-	-	-	30,096	-
1970	-	-	-	-	-	33,887	-
1971	-	-	-	4,711	-	42,640	-
1972	-	-	-	7,905	-	48,612	-
1973	-	-	-	6,624	-	51,807	-
1974	-	-	-	10,332	-	37,501	-
1975	-	-	-	7,094	-	43,804	-
1976	-	-	-	15,763	-	43,546	-
1977	-	-	-	12,202	-	50,858	-
1978	-	-	-	18,353	-	46,606	-
1979	-	-	-	24,289	-	43,450	-
1980	-	-	-	23,241	-	48,323	-
1981	-	-	-	22,832	-	37,900	-
1982	-	-	-	20,071	-	32,644	205
1983	-	-	-	33,432	-	44,458	208
1984	-	-	-	35,615	-	56,407	218
1985	2,111	-	-	29,997	-	55,987	233
1986	4,175	-	-	42,248	-	65,658	252
1987	8,995	-	-	29,437	-	84,558	299
1988	6,189	-	-	40,513	-	117,865	276
1989	4,935	-	-	34,262	-	135,125	235
1990	2,126	-	-	26,612	-	164,640	192
1991	3,715	-	-	46,888	-	213,007	197
1992	2,126	-	-	30,558	-	263,185	225
1993	8,714	300	-	28,006	-	207,231	329
1994	6,722	736	-	33,925	-	223,590	411
1995	-	2,151	-	49,665	-	228,798	461
1996	-	2,375	-	38,697	-	226,436	579
1997	-	5,498	-	47,442	-	217,026	663
1998	-	6,820	-	48,377	1,624	305,354	833
1999	-	5,790	-	45,663	8,613	251,034	1,084
2000	-	5,389	-	12,929	12,896	279,197	1,161
2001	-	5,864	-	17,217	2,402	284,433	1,733
2002	-	4,927	-	18,537	2,288	317,311	1,672
2003	-	2,944	-	26,364	4,659	256,557	971
2004	-	1,967	-	24,904	5,587	258,172	388
2005	-	1,626	6	20,023	3,452	243,738	629
2006	-	2,564	15	29,462	11,825	254,379	759
2007	-	3,559	6	21,244	23,749	274,963	861
2008	-	2,796	-	17,378	36,358	244,692	592
2009	-	3,422	-	17,883	26,724	239,505	271
2010	-	3,090	-	26,907	29,505	247,623	128
2011	-	1,932	-	28,233	39,468	225,134	224
2012	-	2,353	-	24,400	32,199	243,194	171
2013	-	2,022	-	25,041	45,038	255,935	147

Table 6 continued

YEAR	TOKELAU	TUVALU	UNITED STATES OF AMERICA	VANUATU	VIETNAM	WALLIS ET FUTUNA	EASTERN PACIFIC NEI	TOTAL
1960	-	-	708	-	-	-	-	240,093
1961	-	-	626	-	-	-	-	304,476
1962	-	-	669	-	-	-	-	340,038
1963	-	-	549	-	-	-	-	269,620
1964	-	-	516	-	-	-	-	316,150
1965	-	-	501	-	-	-	-	288,924
1966	-	-	513	-	-	-	-	428,084
1967	-	-	446	-	-	-	-	369,340
1968	-	-	367	-	-	-	-	371,574
1969	-	-	439	-	-	-	-	544,776
1970	-	-	493	-	-	-	-	637,019
1971	-	-	437	-	-	-	-	629,975
1972	-	-	419	-	-	-	-	520,785
1973	-	-	307	-	-	-	-	637,274
1974	-	-	347	-	-	-	-	655,715
1975	-	-	310	-	-	-	-	583,712
1976	-	-	1,071	-	-	-	-	726,017
1977	-	-	1,359	-	-	-	672	754,105
1978	-	-	1,477	-	-	-	926	804,351
1979	-	-	11,852	-	-	-	734	771,620
1980	-	-	13,483	-	-	-	114	833,845
1981	-	-	40,496	-	-	-	98	804,558
1982	-	216	75,494	-	-	-	75	855,806
1983	-	337	181,593	-	-	-	2,167	1,064,622
1984	-	540	162,380	-	-	-	10,188	1,155,196
1985	-	4	110,031	-	-	-	1,221	1,009,145
1986	-	390	123,517	-	-	-	-	1,143,610
1987	-	632	145,072	-	-	-	405	1,140,185
1988	-	1,090	122,380	-	-	-	-	1,277,245
1989	-	149	148,339	-	-	-	-	1,303,149
1990	-	90	171,301	-	-	-	-	1,420,403
1991	-	29	225,040	-	-	-	-	1,655,178
1992	-	8	209,243	-	-	-	-	1,596,144
1993	-	-	203,518	-	-	-	-	1,483,912
1994	-	-	215,683	820	-	-	-	1,632,080
1995	-	-	176,125	7,276	-	-	211	1,646,538
1996	-	-	158,219	11,497	-	-	642	1,640,490
1997	-	-	154,149	26,164	-	-	1,776	1,703,332
1998	-	-	184,278	39,423	-	-	2,935	2,105,446
1999	-	-	191,739	46,162	-	-	1,910	1,914,021
2000	-	-	135,410	37,545	33,632	-	2,925	1,997,702
2001	-	-	128,503	11,917	35,400	-	509	1,909,632
2002	8	-	136,190	28,031	37,683	-	244	2,095,502
2003	3	-	101,004	28,443	37,458	-	2,600	2,098,652
2004	3	-	79,395	66,793	50,521	-	2,013	2,282,240
2005	6	19	97,870	88,391	52,409	-	709	2,198,836
2006	6	12	81,165	76,148	52,573	-	709	2,238,698
2007	8	26	103,576	82,758	54,210	-	709	2,426,265
2008	8	22	221,186	47,892	49,903	-	708	2,476,344
2009	12	4,457	292,702	49,567	44,241	-	708	2,604,040
2010	4	10,581	256,977	38,865	41,665	-	709	2,500,361
2011	4	10,085	215,131	34,792	49,584	13	-	2,316,329
2012	229	13,632	272,603	37,825	65,556	-	-	2,652,322
2013	177	14,194	265,053	34,327	78,631	-	-	2,621,511

**Table 7. Catches of albacore in the Pacific Ocean.** "OTHER" includes purse seine catches.

YEAR	SOUTH PACIFIC OCEAN					NORTH PACIFIC OCEAN					TOTAL
	LONGLINE	POLE-AND-LINE	TROLL	OTHER	SUBTOTAL	LONGLINE	POLE-AND-LINE	TROLL	OTHER	SUBTOTAL	
1960	22,248	45	0	0	22,293	17,384	25,156	20,105	769	63,414	85,707
1961	23,742	0	0	0	23,742	17,490	21,476	12,059	1,631	52,656	76,398
1962	35,219	0	0	0	35,219	15,850	9,814	19,753	1,926	47,343	82,562
1963	31,095	16	0	0	31,111	13,639	28,852	25,145	1,438	69,074	100,185
1964	22,824	0	0	0	22,824	15,659	27,269	18,391	1,271	62,590	85,414
1965	25,455	0	0	0	25,455	14,226	41,908	16,557	863	73,554	99,009
1966	38,661	0	0	0	38,661	25,600	24,430	15,377	1,285	66,692	105,353
1967	43,952	0	5	0	43,957	29,821	34,594	17,975	1,316	83,706	127,663
1968	32,368	0	14	0	32,382	25,152	21,503	21,462	2,327	70,444	102,826
1969	24,805	0	0	0	24,805	19,223	34,908	20,192	1,838	76,161	100,966
1970	34,775	100	50	0	34,925	19,229	28,679	21,422	1,656	70,986	105,911
1971	38,530	100	0	0	38,630	14,982	55,028	22,272	2,436	94,718	133,348
1972	39,131	122	268	0	39,521	19,025	64,319	27,521	1,659	112,524	152,045
1973	46,705	141	484	0	47,330	17,030	71,003	17,053	2,006	107,092	154,422
1974	33,039	112	898	0	34,049	14,047	78,341	21,509	1,384	115,281	149,330
1975	22,849	105	646	0	23,600	14,547	55,395	19,043	1,219	90,204	113,804
1976	28,957	100	25	0	29,082	18,510	88,036	16,183	3,217	125,946	155,028
1977	38,019	100	621	0	38,740	17,684	33,431	10,022	2,264	63,401	102,141
1978	32,890	100	1,686	0	34,676	13,851	60,827	16,636	8,064	99,378	134,054
1979	26,162	100	814	0	27,076	14,738	44,965	7,302	4,211	71,216	98,292
1980	30,972	101	1,468	0	32,541	15,635	47,124	7,768	4,707	75,234	107,775
1981	32,694	0	2,085	5	34,784	18,864	28,174	12,837	11,526	71,401	106,185
1982	28,347	1	2,434	6	30,788	18,275	30,039	6,713	13,963	68,990	99,778
1983	24,309	0	744	39	25,092	16,586	21,705	9,584	7,676	55,551	80,643
1984	20,340	2	2,773	1,589	24,704	16,133	27,043	9,354	18,670	71,200	95,904
1985	27,138	0	3,253	1,937	32,328	14,781	22,212	6,471	14,947	58,411	90,739
1986	32,641	0	2,003	1,946	36,590	13,140	16,528	4,738	10,938	45,344	81,934
1987	21,979	9	2,134	930	25,052	15,411	19,240	2,870	11,509	49,030	74,082
1988	28,288	0	4,296	5,283	37,867	15,601	6,814	4,367	18,968	45,750	83,617
1989	18,738	0	8,370	21,968	49,076	14,536	8,683	2,000	19,986	45,205	94,281
1990	21,304	245	6,975	7,538	36,062	16,608	8,647	2,905	26,159	54,319	90,381
1991	26,292	14	7,805	1,489	35,600	18,049	7,103	1,984	10,798	37,934	73,534
1992	32,014	11	6,578	65	38,668	19,991	13,888	4,934	16,580	55,393	94,061
1993	30,998	74	4,296	70	35,438	31,143	12,797	6,748	4,112	54,800	90,238
1994	34,998	67	7,164	89	42,318	30,825	26,389	13,134	3,486	73,834	116,152
1995	30,508	139	7,716	104	38,467	32,948	21,061	10,758	1,725	66,492	104,959
1996	26,763	30	7,410	156	34,359	39,383	20,296	21,849	1,070	82,598	116,957
1997	34,657	21	4,679	133	39,490	48,365	32,311	18,674	2,736	102,086	141,576
1998	43,970	36	6,280	85	50,371	48,050	23,005	20,074	3,237	94,366	144,737
1999	35,955	138	3,447	74	39,614	46,767	50,429	13,853	11,155	122,204	161,818
2000	40,642	102	6,455	139	47,338	41,615	21,619	15,245	4,985	83,464	130,802
2001	52,855	37	5,253	199	58,344	37,744	29,569	16,738	3,002	87,053	145,397
2002	68,411	18	4,661	150	73,240	33,911	48,832	16,323	6,219	105,285	178,525
2003	56,351	12	5,984	130	62,477	33,293	36,173	21,886	3,184	94,536	157,013
2004	57,024	110	4,614	123	61,871	30,175	32,380	22,255	8,977	93,787	155,658
2005	59,897	29	3,503	137	63,566	33,028	16,199	14,067	3,183	66,477	130,043
2006	59,343	29	2,884	188	62,444	34,270	15,423	18,931	1,137	69,761	132,205
2007	56,500	17	2,014	60	58,591	31,771	37,789	18,646	6,438	94,644	153,235
2008	59,066	12	3,502	160	62,740	28,369	19,060	17,901	2,925	68,255	130,995
2009	80,638	21	2,031	211	82,901	28,802	33,390	19,167	2,755	84,114	167,015
2010	86,599	14	2,139	190	88,942	28,375	19,561	19,749	888	68,573	157,515
2011	63,024	30	3,189	233	66,476	35,398	26,704	16,895	1,077	80,074	146,550
2012	84,501	41	2,962	248	87,752	35,968	33,742	17,256	4,842	91,808	179,560
2013	81,198	26	3,226	248	84,698	33,951	33,742	19,844	5,333	92,870	177,568

**Table 8. Catches of bigeye in the Pacific Ocean.**

YEAR	WESTERN AND CENTRAL PACIFIC OCEAN					EASTERN PACIFIC OCEAN					TOTAL
	LONGLINE	POLE-AND-LINE	PURSE SEINE	OTHER	SUBTOTAL	LONGLINE	POLE-AND-LINE	PURSE SEINE	OTHER	SUBTOTAL	
1960	43,467	1,500	58	0	45,025	17,722	0	24	0	17,746	62,771
1961	37,517	1,800	63	0	39,380	52,431	106	105	0	52,642	92,022
1962	35,895	800	173	0	36,868	45,050	318	302	0	45,670	82,538
1963	42,540	1,800	6	0	44,346	66,617	140	0	0	66,757	111,103
1964	30,978	1,143	231	28	32,380	46,279	127	0	0	46,406	78,786
1965	29,844	1,254	201	30	31,329	29,164	231	0	0	29,395	60,724
1966	31,949	1,108	9	86	33,152	34,800	292	210	0	35,302	68,454
1967	32,791	2,803	61	253	35,908	35,878	1,305	1,697	0	38,880	74,788
1968	27,199	2,272	193	204	29,868	35,233	115	4,618	0	39,966	69,834
1969	32,371	1,675	53	62	34,161	52,071	0	1,093	0	53,164	87,325
1970	34,348	1,589	746	2,802	39,485	33,341	0	2,411	0	35,752	75,237
1971	36,798	931	886	3,057	41,672	29,804	75	4,359	18	34,256	75,928
1972	49,334	1,762	857	3,497	55,450	36,128	126	3,971	0	40,225	95,675
1973	40,285	1,258	967	4,218	46,728	50,777	236	3,342	0	54,355	101,083
1974	41,787	1,039	1,397	4,719	48,942	36,961	0	1,554	0	38,515	87,457
1975	57,623	1,334	1,600	4,938	65,495	41,733	36	6,574	0	48,343	113,838
1976	68,514	3,423	1,881	4,123	77,941	54,290	75	17,212	7	71,584	149,525
1977	66,249	3,325	2,280	5,627	77,481	74,086	2	11,161	0	85,249	162,730
1978	50,502	3,337	2,581	4,231	60,651	70,659	0	18,539	0	89,198	149,849
1979	57,319	2,540	2,634	4,615	67,108	55,435	0	12,097	1	67,533	134,641
1980	57,236	2,916	3,273	3,663	67,088	64,335	0	21,938	130	86,403	153,491
1981	42,335	3,382	9,729	4,244	59,690	53,416	0	14,921	7	68,344	128,034
1982	45,900	4,993	14,071	4,005	68,969	53,365	42	6,939	3	60,349	129,318
1983	42,458	5,077	21,560	4,371	73,466	60,043	39	4,575	37	64,694	138,160
1984	47,522	4,557	23,422	4,625	80,126	46,394	2	8,861	11	55,268	135,394
1985	52,460	5,529	19,097	5,560	82,646	66,325	2	6,056	15	72,398	155,044
1986	47,932	4,133	26,889	5,856	84,810	102,425	0	2,686	74	105,185	189,995
1987	60,153	4,602	30,822	5,263	100,840	100,121	0	1,177	49	101,347	202,187
1988	50,709	5,890	30,277	6,404	93,280	72,758	5	1,535	15	74,313	167,593
1989	54,782	6,131	31,531	7,012	99,456	70,963	0	2,030	1	72,994	172,450
1990	66,986	5,985	35,974	7,708	116,653	98,871	0	5,921	59	104,851	221,504
1991	48,885	3,929	38,935	8,859	100,608	104,195	31	4,870	25	109,121	209,729
1992	64,030	4,055	45,608	5,931	119,624	84,808	0	7,179	13	92,000	211,624
1993	58,359	4,505	35,179	5,514	103,557	72,498	0	9,657	35	82,190	185,747
1994	68,338	5,251	37,509	7,661	118,759	71,360	0	34,899	806	107,065	225,824
1995	58,834	6,228	34,060	8,284	107,406	58,269	0	45,321	1,369	104,959	212,365
1996	49,956	7,940	42,152	10,228	110,276	46,958	0	61,311	748	109,017	219,293
1997	61,255	6,563	77,373	7,671	152,862	52,580	0	64,272	20	116,872	269,734
1998	76,444	6,405	76,354	9,190	168,393	46,375	0	44,129	628	91,132	259,525
1999	68,648	5,856	66,945	8,915	150,364	36,450	0	51,158	538	88,146	238,510
2000	65,972	6,838	50,697	9,942	133,449	47,605	0	94,640	253	142,498	275,947
2001	66,830	5,905	54,264	9,154	136,153	68,755	0	61,156	19	129,930	266,083
2002	82,488	6,109	63,850	9,549	161,996	74,424	0	57,440	12	131,876	293,872
2003	71,045	5,296	44,161	9,453	129,955	59,776	0	54,174	21	113,971	243,926
2004	87,985	9,238	70,530	10,803	178,556	43,483	0	67,592	194	111,269	289,825
2005	70,251	6,851	59,811	4,429	141,342	41,432	0	67,895	25	109,352	250,694
2006	76,786	9,781	60,772	4,307	151,646	33,802	0	83,837	40	117,679	269,325
2007	74,699	7,296	47,688	4,575	134,258	29,847	0	63,451	44	93,342	227,600
2008	73,934	9,204	56,673	4,290	144,101	26,136	0	75,028	28	101,192	245,293
2009	73,535	7,916	62,994	5,100	149,545	31,282	0	76,800	15	108,097	257,642
2010	60,566	7,027	54,759	4,106	126,458	35,227	0	57,753	1,804	94,784	221,242
2011	65,355	5,655	69,972	5,272	146,254	31,168	0	56,512	1,462	89,142	235,396
2012	70,617	3,932	71,587	12,437	158,573	30,861	0	66,020	869	97,750	256,323
2013	52,579	4,906	79,897	8,501	145,883	30,861	0	49,104	869	80,834	226,717

**Table 9. Catches of skipjack in the Pacific Ocean**

YEAR	WESTERN AND CENTRAL PACIFIC OCEAN					EASTERN PACIFIC OCEAN					TOTAL
	LONGLINE	POLE-AND-LINE	PURSE SEINE	OTHER	SUBTOTAL	LONGLINE	POLE-AND-LINE	PURSE SEINE	OTHER	SUBTOTAL	
1960	0	70,428	3,728	15,782	89,938	0	28,929	16,649	481	46,059	135,997
1961	0	127,011	11,693	18,032	156,736	0	28,995	45,706	428	75,129	231,865
1962	4	152,387	11,674	17,559	181,624	0	17,660	58,939	503	77,102	258,726
1963	0	94,757	9,592	18,354	122,703	0	17,138	82,404	2,389	101,931	224,634
1964	5	137,106	25,006	20,801	182,918	0	10,306	51,759	3,609	65,674	248,592
1965	11	129,933	4,657	20,620	155,221	0	19,867	64,056	1,046	84,969	240,190
1966	50	215,600	10,949	22,913	249,512	0	14,083	50,264	1,960	66,307	315,819
1967	101	168,846	10,940	24,930	204,817	0	18,016	104,928	5,038	127,982	332,799
1968	60	162,379	7,640	24,929	195,008	0	7,340	59,642	10,128	77,110	272,118
1969	124	315,795	5,036	30,070	351,025	0	6,970	46,020	11,904	64,894	415,919
1970	1,260	379,074	10,552	32,164	423,050	0	7,470	47,466	7,234	62,170	485,220
1971	1,440	333,284	16,930	29,164	380,818	0	11,679	94,502	6,702	112,883	493,701
1972	1,524	172,827	21,610	41,783	237,744	0	6,556	29,804	1,144	37,504	275,248
1973	1,838	253,217	23,263	50,407	328,725	0	9,135	39,247	638	49,020	377,745
1974	2,088	289,202	15,346	49,528	356,164	0	7,629	79,418	510	87,557	443,721
1975	1,893	218,271	17,931	50,189	288,284	0	13,848	120,358	526	134,732	423,016
1976	2,056	276,582	27,313	51,216	357,167	0	11,256	124,957	705	136,918	494,085
1977	3,107	294,641	39,367	66,475	403,590	0	7,522	84,603	1,960	94,085	497,675
1978	3,219	331,401	40,754	73,644	449,018	0	6,047	172,294	1,324	179,665	628,683
1979	2,175	285,859	64,073	60,440	412,547	0	6,346	133,695	1,462	141,503	554,050
1980	630	333,597	79,529	34,945	448,701	0	5,225	130,912	1,965	138,102	586,803
1981	754	296,065	94,498	39,558	430,875	0	5,906	119,165	930	126,001	556,876
1982	970	264,726	163,170	44,021	472,887	0	3,760	100,499	410	104,669	577,556
1983	2,143	298,928	297,202	45,450	643,723	0	4,387	56,851	737	61,975	705,698
1984	867	366,811	312,855	39,870	720,403	0	2,884	59,859	868	63,611	784,014
1985	1,100	238,932	282,033	39,603	561,668	0	946	50,829	227	52,002	613,670
1986	1,434	322,665	343,315	46,622	714,036	0	1,921	65,634	190	67,745	781,781
1987	2,320	252,142	352,991	46,829	654,282	0	2,233	64,019	214	66,466	720,748
1988	1,930	295,325	444,357	49,571	791,183	0	4,325	87,113	689	92,127	883,310
1989	2,502	275,088	440,525	48,272	766,387	0	2,940	94,934	1,047	98,921	865,308
1990	358	211,573	545,972	75,714	833,617	0	823	74,369	1,915	77,107	910,724
1991	882	259,778	723,395	77,113	1,061,168	0	1,717	62,228	1,945	65,890	1,127,058
1992	431	218,765	661,500	72,336	953,032	0	1,957	84,283	1,054	87,294	1,040,326
1993	569	255,152	601,545	58,831	916,097	0	3,772	83,830	2,317	89,919	1,006,016
1994	353	209,636	707,797	68,918	986,704	0	3,240	70,126	804	74,170	1,060,874
1995	572	247,744	697,669	80,441	1,026,426	0	5,253	127,047	1,988	134,288	1,160,714
1996	3,874	242,486	675,658	95,543	1,017,561	0	2,555	103,973	1,313	107,841	1,125,402
1997	3,932	236,999	598,143	86,675	925,749	0	3,260	153,456	231	156,947	1,082,696
1998	4,904	266,772	833,169	100,901	1,205,746	0	1,684	140,631	531	142,846	1,348,592
1999	4,064	255,330	742,239	95,226	1,096,859	0	2,044	261,565	1,594	265,203	1,362,062
2000	4,516	264,407	794,710	120,559	1,184,192	68	231	204,307	67	204,673	1,388,865
2001	5,036	212,668	787,149	101,449	1,106,302	1,214	448	143,561	34	145,257	1,251,559
2002	3,376	207,488	967,458	98,597	1,276,919	261	616	153,303	119	154,299	1,431,218
2003	3,693	238,179	935,589	100,959	1,278,420	634	638	274,529	2,777	278,578	1,556,998
2004	3,841	249,936	1,018,889	126,472	1,399,138	713	528	198,664	1,105	201,010	1,600,148
2005	1,045	216,715	1,060,872	117,105	1,395,737	231	1,300	263,229	1,780	266,540	1,662,277
2006	1,470	208,220	1,141,585	126,163	1,477,438	224	435	296,269	986	297,914	1,775,352
2007	1,132	212,720	1,298,966	146,739	1,659,557	107	276	208,296	1,065	209,744	1,869,301
2008	781	218,070	1,267,113	153,687	1,639,651	56	501	296,603	1,163	298,323	1,937,974
2009	1,148	200,692	1,434,618	141,140	1,777,598	184	151	230,527	1,112	231,974	2,009,572
2010	1,150	222,948	1,332,404	133,643	1,690,145	121	47	147,192	2,964	150,324	1,840,469
2011	1,085	206,659	1,188,869	127,986	1,524,599	103	24	276,035	2,132	278,294	1,802,893
2012	1,795	170,199	1,395,401	160,378	1,727,773	155	303	266,215	1,047	267,720	1,995,493
2013	1,088	160,554	1,474,977	135,203	1,771,822	155	167	278,708	1,047	280,077	2,051,899

**Table 10. Catches of yellowfin in the Pacific Ocean**

YEAR	WESTERN AND CENTRAL PACIFIC OCEAN					EASTERN PACIFIC OCEAN					TOTAL
	LONGLINE	POLE-AND-LINE	PURSE SEINE	OTHER	SUBTOTAL	LONGLINE	POLE-AND-LINE	PURSE SEINE	OTHER	SUBTOTAL	
1960	55,020	1,872	1,438	15,337	73,667	5,934	22,151	79,425	458	107,968	181,635
1961	53,166	3,259	2,777	16,236	75,438	12,500	15,220	80,058	949	108,727	184,165
1962	55,547	4,225	6,975	17,197	83,944	10,211	11,052	56,271	706	78,240	162,184
1963	53,185	2,071	2,277	18,223	75,756	18,973	7,041	48,004	688	74,706	150,462
1964	45,241	5,074	3,647	20,186	74,148	16,975	3,989	78,318	738	100,020	174,168
1965	45,487	3,434	3,752	20,956	73,629	15,620	6,983	65,348	312	88,263	161,892
1966	61,623	2,192	5,844	23,409	93,068	9,097	5,302	68,982	507	83,888	176,956
1967	35,720	3,125	3,418	26,303	68,566	9,285	4,512	65,442	1,534	80,773	149,339
1968	45,572	2,706	7,043	26,085	81,406	14,986	4,307	86,542	3,241	109,076	190,482
1969	51,372	5,166	3,873	26,612	87,023	15,329	7,195	113,665	1,866	138,055	225,078
1970	55,481	4,606	9,335	29,422	98,844	12,643	4,260	139,385	4,850	161,138	259,982
1971	56,927	5,248	10,934	31,204	104,313	8,013	5,300	104,863	2,482	120,658	224,971
1972	60,251	7,465	11,821	35,749	115,286	16,859	6,060	164,297	1,060	188,276	303,562
1973	61,818	7,458	17,047	41,726	128,049	11,697	3,933	194,200	661	210,491	338,540
1974	57,490	6,582	19,850	46,997	130,919	7,190	8,188	191,626	1,230	208,234	339,153
1975	68,416	7,801	15,592	48,536	140,345	10,640	5,629	183,028	567	199,864	340,209
1976	76,363	17,186	17,689	40,666	151,904	15,632	3,280	215,108	358	234,378	386,282
1977	92,680	15,257	19,246	55,092	182,275	12,355	1,841	184,922	248	199,366	381,641
1978	108,428	12,767	16,185	38,491	175,871	10,188	3,888	158,801	1,103	173,980	349,851
1979	104,932	11,638	32,513	46,375	195,458	11,473	4,789	170,650	212	187,124	382,582
1980	122,607	15,142	37,760	39,583	215,092	13,477	1,481	143,042	862	158,862	373,954
1981	95,570	22,044	57,950	44,533	220,097	7,999	1,477	168,234	800	178,510	398,607
1982	85,170	17,123	76,900	41,603	220,796	10,961	1,538	114,755	280	127,534	348,330
1983	87,729	17,184	124,969	45,179	275,061	10,895	4,007	83,929	849	99,680	374,741
1984	74,204	17,633	129,609	50,440	271,886	10,345	2,991	135,785	344	149,465	421,351
1985	77,668	22,717	121,101	57,803	279,289	13,198	1,070	211,459	212	225,939	505,228
1986	66,588	17,970	116,008	60,968	261,534	22,808	2,537	260,512	214	286,071	547,605
1987	72,680	19,044	160,913	57,367	310,004	18,911	5,107	262,008	138	286,164	596,168
1988	84,249	20,566	129,806	68,021	302,642	14,660	3,723	277,293	752	296,428	599,070
1989	69,912	22,133	186,665	71,530	350,240	17,032	4,145	277,996	263	299,436	649,676
1990	74,865	20,769	213,008	83,156	391,798	34,633	2,676	263,253	960	301,522	693,320
1991	58,556	19,182	247,698	92,536	417,972	30,899	2,856	231,257	958	265,970	683,942
1992	74,417	23,043	276,539	59,777	433,776	18,646	3,789	228,121	1,958	252,514	686,290
1993	69,364	20,486	226,821	59,188	375,859	24,009	4,951	219,492	3,034	251,486	627,345
1994	76,867	21,378	240,216	75,514	413,975	30,026	3,625	208,408	1,487	243,546	657,521
1995	85,197	23,209	217,718	82,395	408,519	20,596	1,268	215,434	2,066	239,364	647,883
1996	88,234	30,551	190,981	99,923	409,689	16,608	3,762	238,607	1,639	260,616	670,305
1997	78,054	22,845	316,666	83,763	501,328	22,163	4,418	244,878	600	272,059	773,387
1998	76,110	27,506	397,371	101,754	602,741	15,336	5,085	253,959	1,529	275,909	878,650
1999	68,520	26,787	327,862	103,038	526,207	11,682	1,783	281,920	2,706	298,091	824,298
2000	90,896	26,957	334,074	109,860	561,787	23,855	2,431	255,231	1,109	282,626	844,413
2001	89,779	24,443	314,723	99,047	527,992	29,608	3,916	382,702	520	416,746	944,738
2002	91,081	24,133	274,576	102,132	491,922	25,531	950	412,507	549	439,537	931,459
2003	91,013	24,304	324,809	105,505	545,631	25,174	470	381,107	1,145	407,896	953,527
2004	101,116	30,640	315,450	119,759	566,965	18,779	1,884	269,597	627	290,887	857,852
2005	78,141	27,007	375,766	63,353	544,267	12,118	1,821	268,102	1,852	283,893	828,160
2006	73,439	23,544	326,276	65,720	488,979	9,316	686	166,629	1,458	178,089	667,068
2007	71,231	26,460	322,588	72,275	492,554	7,779	894	170,016	1,439	180,128	672,682
2008	74,150	22,639	409,672	70,573	577,034	8,371	812	185,057	941	195,181	772,215
2009	88,734	23,859	322,639	96,720	531,952	8,479	709	236,771	995	246,954	778,906
2010	83,151	20,077	346,849	94,540	544,617	6,645	460	251,008	2,641	260,754	805,371
2011	82,441	36,780	316,967	81,451	517,639	6,239	276	206,851	2,638	216,004	733,643
2012	76,719	34,590	394,229	104,077	609,615	9,918	400	198,017	566	208,901	818,516
2013	58,740	21,520	363,791	85,386	529,437	9,918	781	216,847	566	228,112	757,549

**Table 11. Catches of albacore, bigeye, skipjack and yellowfin in the WCPO**

YEAR	ALBACORE		BIGEYE		SKIPJACK		YELLOWFIN		TOTAL
	TONNES	%	TONNES	%	TONNES	%	TONNES	%	
1960	31,463	13	45,025	19	89,938	37	73,667	31	240,093
1961	32,922	11	39,380	13	156,736	51	75,438	25	304,476
1962	37,602	11	36,868	11	181,624	53	83,944	25	340,038
1963	26,815	10	44,346	16	122,703	46	75,756	28	269,620
1964	26,652	8	32,380	10	182,918	58	74,148	23	316,098
1965	28,724	10	31,329	11	155,221	54	73,629	25	288,903
1966	52,180	12	33,152	8	249,512	58	93,068	22	427,912
1967	55,403	15	35,908	10	204,817	56	68,566	19	364,694
1968	61,379	17	29,868	8	195,008	53	81,406	22	367,661
1969	71,137	13	34,161	6	351,025	65	87,023	16	543,346
1970	71,496	11	39,485	6	423,050	67	98,844	16	632,875
1971	96,125	15	41,672	7	380,818	61	104,313	17	622,928
1972	106,697	21	55,450	11	237,744	46	115,286	22	515,177
1973	129,538	20	46,728	7	328,725	52	128,049	20	633,040
1974	112,827	17	48,942	8	356,164	55	130,919	20	648,852
1975	83,864	15	65,495	11	288,284	50	140,345	24	577,988
1976	131,620	18	77,941	11	357,167	50	151,904	21	718,632
1977	79,436	11	77,481	10	403,590	54	182,275	25	742,782
1978	105,771	13	60,651	8	449,018	57	175,871	22	791,311
1979	84,878	11	67,108	9	412,547	54	195,458	26	759,991
1980	94,123	11	67,088	8	448,701	54	215,092	26	825,004
1981	86,385	11	59,690	7	430,875	54	220,097	28	797,047
1982	86,847	10	68,969	8	472,887	56	220,796	26	849,499
1983	64,112	6	73,466	7	643,723	61	275,061	26	1,056,362
1984	73,452	6	80,126	7	720,403	63	271,886	24	1,145,867
1985	76,034	8	82,646	8	561,668	56	279,289	28	999,637
1986	71,045	6	84,810	7	714,036	63	261,534	23	1,131,425
1987	60,625	5	100,840	9	654,282	58	310,004	28	1,125,751
1988	62,279	5	93,280	7	791,183	63	302,642	24	1,249,384
1989	69,949	5	99,456	8	766,387	60	350,240	27	1,286,032
1990	60,990	4	116,653	8	833,617	59	391,798	28	1,403,058
1991	56,449	3	100,608	6	1,061,168	65	417,972	26	1,636,197
1992	62,483	4	119,624	8	953,032	61	433,776	28	1,568,915
1993	71,723	5	103,557	7	916,097	62	375,859	26	1,467,236
1994	91,696	6	118,759	7	986,704	61	413,975	26	1,611,134
1995	89,851	6	107,406	7	1,026,426	63	408,519	25	1,632,202
1996	88,874	5	110,276	7	1,017,561	63	409,689	25	1,626,400
1997	109,798	6	152,862	9	925,749	55	501,328	30	1,689,737
1998	107,373	5	168,393	8	1,205,746	58	602,741	29	2,084,253
1999	127,428	7	150,364	8	1,096,859	58	526,207	28	1,900,858
2000	96,302	5	133,449	7	1,184,192	60	561,787	28	1,975,730
2001	114,463	6	136,153	7	1,106,302	59	527,992	28	1,884,910
2002	140,122	7	161,996	8	1,276,919	62	491,922	24	2,070,959
2003	110,643	5	129,955	6	1,278,420	62	545,631	26	2,064,649
2004	114,461	5	178,556	8	1,399,138	62	566,965	25	2,259,120
2005	99,759	5	141,342	6	1,395,737	64	544,267	25	2,181,105
2006	98,291	4	151,646	7	1,477,438	67	488,979	22	2,216,354
2007	121,628	5	134,258	6	1,659,557	69	492,554	20	2,407,997
2008	99,250	4	144,101	6	1,639,651	67	577,034	23	2,460,036
2009	129,154	5	149,545	6	1,777,598	69	531,952	21	2,588,249
2010	119,168	5	126,458	5	1,690,145	68	544,617	22	2,480,388
2011	110,138	5	146,254	6	1,524,599	66	517,639	23	2,298,630
2012	136,731	5	158,573	6	1,727,773	66	609,615	23	2,632,692
2013	134,119	5	145,883	6	1,771,822	69	529,437	21	2,581,261

**Table 12. Catches of albacore, bigeye, skipjack and yellowfin in the EPO**

YEAR	ALBACORE		BIGEYE		SKIPJACK		YELLOWFIN		TOTAL
	TONNES	%	TONNES	%	TONNES	%	TONNES	%	
1960	23,292	12	17,746	9	46,059	24	107,968	55	195,065
1961	15,862	6	52,642	21	75,129	30	108,727	43	252,360
1962	22,659	10	45,670	20	77,102	34	78,240	35	223,671
1963	29,799	11	66,757	24	101,931	37	74,706	27	273,193
1964	22,586	10	46,406	20	65,674	28	100,020	43	234,686
1965	17,939	8	29,395	13	84,969	39	88,263	40	220,566
1966	17,938	9	35,302	17	66,307	33	83,888	41	203,435
1967	22,524	8	38,880	14	127,982	47	80,773	30	270,159
1968	26,249	10	39,966	16	77,110	31	109,076	43	252,401
1969	22,646	8	53,164	19	64,894	23	138,055	50	278,759
1970	26,809	9	35,752	13	62,170	22	161,138	56	285,869
1971	24,517	8	34,256	12	112,883	39	120,658	41	292,314
1972	29,548	10	40,225	14	37,504	13	188,276	64	295,553
1973	18,763	6	54,355	16	49,020	15	210,491	63	332,629
1974	25,257	7	38,515	11	87,557	24	208,234	58	359,563
1975	23,051	6	48,343	12	134,732	33	199,864	49	405,990
1976	20,577	4	71,584	15	136,918	30	234,378	51	463,457
1977	24,024	6	85,249	21	94,085	23	199,366	50	402,724
1978	31,108	7	89,198	19	179,665	38	173,980	37	473,951
1979	10,953	3	67,533	17	141,503	35	187,124	46	407,113
1980	11,569	3	86,403	22	138,102	35	158,862	40	394,936
1981	20,283	5	68,344	17	126,001	32	178,510	45	393,138
1982	12,522	4	60,349	20	104,669	34	127,534	42	305,074
1983	15,729	6	64,694	27	61,975	26	99,680	41	242,078
1984	21,857	8	55,268	19	63,611	22	149,465	52	290,201
1985	14,841	4	72,398	20	52,002	14	225,939	62	365,180
1986	11,284	2	105,185	22	67,745	14	286,071	61	470,285
1987	12,977	3	101,347	22	66,466	14	286,164	61	466,954
1988	15,771	3	74,313	16	92,127	19	296,428	62	478,639
1989	9,501	2	72,994	15	98,921	21	299,436	62	480,852
1990	10,850	2	104,851	21	77,107	16	301,522	61	494,330
1991	11,481	3	109,121	24	65,890	15	265,970	59	452,462
1992	23,075	5	92,000	20	87,294	19	252,514	56	454,883
1993	15,605	4	82,190	19	89,919	20	251,486	57	439,200
1994	20,618	5	107,065	24	74,170	17	243,546	55	445,399
1995	14,075	3	104,959	21	134,288	27	239,364	49	492,686
1996	16,112	3	109,017	22	107,841	22	260,616	53	493,586
1997	17,279	3	116,872	21	156,947	28	272,059	48	563,157
1998	25,913	5	91,132	17	142,846	27	275,909	51	535,800
1999	26,464	4	88,146	13	265,203	39	298,091	44	677,904
2000	23,275	4	142,498	22	204,673	31	282,626	43	653,072
2001	33,336	5	129,930	18	145,257	20	416,746	57	725,269
2002	30,154	4	131,876	17	154,299	20	439,537	58	755,866
2003	45,538	5	113,971	13	278,578	33	407,896	48	845,983
2004	40,834	6	111,269	17	201,010	31	290,887	45	644,000
2005	27,203	4	109,352	16	266,540	39	283,893	41	686,988
2006	32,992	5	117,679	19	297,914	48	178,089	28	626,674
2007	31,128	6	93,342	18	209,744	41	180,128	35	514,342
2008	26,627	4	101,192	16	298,323	48	195,181	31	621,323
2009	31,619	5	108,097	17	231,974	37	246,954	40	618,644
2010	34,048	6	94,784	18	150,324	28	260,754	48	539,910
2011	37,023	6	89,142	14	278,294	45	216,004	35	620,463
2012	40,285	7	97,750	16	267,720	44	208,901	34	614,656
2013	40,285	6	80,834	13	280,077	45	228,112	36	629,308



**Table 13. Catches of albacore, bigeye, skipjack and yellowfin in the Pacific Ocean**

YEAR	ALBACORE		BIGEYE		SKIPJACK		YELLOWFIN		TOTAL
	TONNES	%	TONNES	%	TONNES	%	TONNES	%	
1960	85,707	18	62,771	13	135,997	29	181,635	39	466,110
1961	76,398	13	92,022	16	231,865	40	184,165	32	584,450
1962	82,562	14	82,538	14	258,726	44	162,184	28	586,010
1963	100,185	17	111,103	19	224,634	38	150,462	26	586,384
1964	85,414	15	78,786	13	248,592	42	174,168	30	586,960
1965	99,009	18	60,724	11	240,190	43	161,892	29	561,815
1966	105,353	16	68,454	10	315,819	47	176,956	27	666,582
1967	127,663	19	74,788	11	332,799	49	149,339	22	684,589
1968	102,826	16	69,834	11	272,118	43	190,482	30	635,260
1969	100,966	12	87,325	11	415,919	50	225,078	27	829,288
1970	105,911	11	75,237	8	485,220	52	259,982	28	926,350
1971	133,348	14	75,928	8	493,701	53	224,971	24	927,948
1972	152,045	18	95,675	12	275,248	33	303,562	37	826,530
1973	154,422	16	101,083	10	377,745	39	338,540	35	971,790
1974	149,330	15	87,457	9	443,721	44	339,153	33	1,019,661
1975	113,804	11	113,838	11	423,016	43	340,209	34	990,867
1976	155,028	13	149,525	13	494,085	42	386,282	33	1,184,920
1977	102,141	9	162,730	14	497,675	43	381,641	33	1,144,187
1978	134,054	11	149,849	12	628,683	50	349,851	28	1,262,437
1979	98,292	8	134,641	12	554,050	47	382,582	33	1,169,565
1980	107,775	9	153,491	13	586,803	48	373,954	31	1,222,023
1981	106,185	9	128,034	11	556,876	47	398,607	34	1,189,702
1982	99,778	9	129,318	11	577,556	50	348,330	30	1,154,982
1983	80,643	6	138,160	11	705,698	54	374,741	29	1,299,242
1984	95,904	7	135,394	9	784,014	55	421,351	29	1,436,663
1985	90,739	7	155,044	11	613,670	45	505,228	37	1,364,681
1986	81,934	5	189,995	12	781,781	49	547,605	34	1,601,315
1987	74,082	5	202,187	13	720,748	45	596,168	37	1,593,185
1988	83,617	5	167,593	10	883,310	51	599,070	35	1,733,590
1989	94,281	5	172,450	10	865,308	49	649,676	36	1,781,715
1990	90,381	5	221,504	12	910,724	48	693,320	36	1,915,929
1991	73,534	4	209,729	10	1,127,058	54	683,942	33	2,094,263
1992	94,061	5	211,624	10	1,040,326	51	686,290	34	2,032,301
1993	90,238	5	185,747	10	1,006,016	53	627,345	33	1,909,346
1994	116,152	6	225,824	11	1,060,874	51	657,521	32	2,060,371
1995	104,959	5	212,365	10	1,160,714	55	647,883	30	2,125,921
1996	116,957	5	219,293	10	1,125,402	53	670,305	31	2,131,957
1997	141,576	6	269,734	12	1,082,696	48	773,387	34	2,267,393
1998	144,737	6	259,525	10	1,348,592	51	878,650	33	2,631,504
1999	161,818	6	238,510	9	1,362,062	53	824,298	32	2,586,688
2000	130,802	5	275,947	10	1,388,865	53	844,413	32	2,640,027
2001	145,397	6	266,083	10	1,251,559	48	944,738	36	2,607,777
2002	178,525	6	293,872	10	1,431,218	50	931,459	33	2,835,074
2003	157,013	5	243,926	8	1,556,998	53	953,527	33	2,911,464
2004	155,658	5	289,825	10	1,600,148	55	857,852	30	2,903,483
2005	130,043	5	250,694	9	1,662,277	58	828,160	29	2,871,174
2006	132,205	5	269,325	9	1,775,352	62	667,068	23	2,843,950
2007	153,235	5	227,600	8	1,869,301	64	672,682	23	2,922,818
2008	130,995	4	245,293	8	1,937,974	63	772,215	25	3,086,477
2009	167,015	5	257,642	8	2,009,572	63	778,906	24	3,213,135
2010	157,515	5	221,242	7	1,840,469	61	805,371	27	3,024,597
2011	146,550	5	235,396	8	1,802,893	62	733,643	25	2,918,482
2012	179,560	6	256,323	8	1,995,493	61	818,516	25	3,249,892
2013	177,568	6	226,717	7	2,051,899	64	757,549	24	3,213,733

**Table 14. Global catches of albacore, bigeye, skipjack and yellowfin**

YEAR	ALBACORE		BIGEYE		SKIPJACK		YELLOWFIN		TOTAL
	TONNES	%	TONNES	%	TONNES	%	TONNES	%	
1960	161,181	23	88,048	13	155,782	22	293,249	42	698,260
1961	146,524	18	124,098	15	253,353	31	284,369	35	808,344
1962	179,312	21	124,222	14	286,687	33	274,099	32	864,320
1963	192,066	22	150,516	18	263,950	31	248,781	29	855,313
1964	195,404	22	120,296	14	287,607	33	277,314	31	880,621
1965	203,023	23	119,244	14	290,750	33	265,353	30	878,370
1966	195,951	20	117,633	12	370,217	38	291,029	30	974,830
1967	225,080	23	124,652	13	391,386	39	254,044	26	995,162
1968	192,556	19	130,908	13	354,667	34	362,084	35	1,040,215
1969	197,162	16	153,306	13	481,746	40	383,854	32	1,216,068
1970	189,341	15	143,025	11	578,370	45	374,816	29	1,285,552
1971	227,988	17	152,633	11	613,821	46	340,147	25	1,334,589
1972	246,734	20	161,249	13	388,976	31	440,199	36	1,237,158
1973	251,592	18	173,982	12	505,534	36	472,824	34	1,403,932
1974	248,620	16	178,193	12	615,086	40	486,928	32	1,528,827
1975	184,759	13	211,283	15	518,521	36	506,146	36	1,420,709
1976	247,134	15	222,708	14	614,231	37	554,502	34	1,638,575
1977	190,096	11	252,197	15	649,391	39	578,110	35	1,669,794
1978	225,434	13	251,994	14	778,942	43	541,816	30	1,798,186
1979	190,713	11	214,124	13	692,335	42	562,054	34	1,659,226
1980	183,350	11	251,594	14	753,288	43	551,869	32	1,740,101
1981	180,719	10	230,478	13	744,155	42	603,355	34	1,758,707
1982	197,808	11	246,068	14	791,800	44	572,735	32	1,808,411
1983	167,689	9	247,283	13	913,956	47	607,074	31	1,936,002
1984	172,703	8	250,008	12	1,025,158	49	643,609	31	2,091,478
1985	177,401	8	285,481	13	874,287	41	787,177	37	2,124,346
1986	203,418	8	312,611	13	1,055,202	44	840,911	35	2,412,142
1987	187,782	8	323,040	13	1,009,328	42	904,419	37	2,424,569
1988	180,209	7	307,590	12	1,229,207	46	950,785	36	2,667,791
1989	178,283	6	319,932	12	1,231,885	45	1,017,885	37	2,747,985
1990	192,512	6	379,864	13	1,285,019	43	1,128,584	38	2,985,979
1991	158,961	5	383,005	12	1,593,173	49	1,085,136	34	3,220,275
1992	185,530	6	382,767	12	1,496,881	46	1,166,789	36	3,231,967
1993	182,261	6	399,250	12	1,524,186	46	1,182,269	36	3,287,966
1994	212,420	6	468,557	14	1,587,884	46	1,156,342	34	3,425,203
1995	195,581	6	458,010	13	1,661,439	48	1,134,923	33	3,449,953
1996	207,498	6	468,755	14	1,595,678	46	1,167,212	34	3,439,143
1997	228,715	6	527,126	15	1,568,229	44	1,251,780	35	3,575,850
1998	241,655	6	511,883	13	1,840,875	47	1,338,004	34	3,932,417
1999	266,537	7	517,950	13	1,954,761	48	1,320,778	33	4,060,026
2000	239,696	6	509,168	13	1,965,531	49	1,313,255	33	4,027,650
2001	259,038	6	480,697	12	1,839,579	46	1,426,434	36	4,005,748
2002	273,295	6	511,699	12	2,035,835	48	1,412,546	33	4,233,375
2003	244,815	6	465,250	11	2,181,937	49	1,521,575	34	4,413,577
2004	240,224	5	515,412	12	2,222,304	50	1,493,465	33	4,471,405
2005	219,244	5	445,799	10	2,364,287	53	1,428,201	32	4,457,531
2006	229,394	5	455,947	10	2,528,058	58	1,181,326	27	4,394,725
2007	244,938	6	430,343	10	2,465,044	58	1,083,317	26	4,223,642
2008	217,715	5	422,605	10	2,523,135	58	1,198,406	27	4,361,861
2009	247,968	6	447,710	10	2,597,663	58	1,160,738	26	4,454,079
2010	242,231	6	383,980	9	2,453,767	57	1,214,824	28	4,294,802
2011	228,966	5	406,580	10	2,407,262	57	1,163,415	28	4,206,223
2012	266,074	6	442,486	10	2,550,907	56	1,287,930	28	4,547,397
2013	264,082	6	412,880	9	2,607,313	58	1,226,963	27	4,511,238

**Table 15. Catches of albacore, bigeye, skipjack and yellowfin by ocean area.** Estimates for the Atlantic Ocean and Indian Ocean for 2012 have been carried over from 2013, respectively.

YEAR	WCPO		EPO		ATLANTIC		INDIAN		TOTAL
	TONNES	%	TONNES	%	TONNES	%	TONNES	%	
1960	240,093	34	226,017	32	145,384	21	86,766	12	698,260
1961	304,476	38	279,974	35	135,230	17	88,664	11	808,344
1962	340,038	39	245,972	28	169,697	20	108,613	13	864,320
1963	269,620	32	316,764	37	188,394	22	80,535	9	855,313
1964	316,098	36	270,862	31	201,987	23	91,674	10	880,621
1965	288,903	33	272,912	31	222,199	25	94,356	11	878,370
1966	427,912	44	238,670	24	181,817	19	126,431	13	974,830
1967	364,694	37	319,895	32	184,929	19	125,644	13	995,162
1968	367,661	35	267,599	26	228,017	22	176,938	17	1,040,215
1969	543,346	45	285,942	24	236,694	19	150,086	12	1,216,068
1970	632,875	49	293,475	23	237,191	18	122,011	9	1,285,552
1971	622,928	47	305,020	23	290,958	22	115,683	9	1,334,589
1972	515,177	42	311,353	25	301,937	24	108,691	9	1,237,158
1973	633,040	45	338,750	24	304,880	22	127,262	9	1,403,932
1974	648,852	42	370,809	24	358,304	23	150,862	10	1,528,827
1975	577,988	41	412,879	29	302,119	21	127,723	9	1,420,709
1976	718,632	44	466,288	28	316,778	19	136,877	8	1,638,575
1977	742,782	44	401,405	24	372,569	22	153,038	9	1,669,794
1978	791,311	44	471,126	26	368,658	21	167,091	9	1,798,186
1979	759,991	46	409,574	25	338,014	20	151,647	9	1,659,226
1980	825,004	47	397,019	23	367,602	21	150,476	9	1,740,101
1981	797,047	45	392,655	22	416,733	24	152,272	9	1,758,707
1982	849,499	47	305,483	17	469,190	26	184,239	10	1,808,411
1983	1,056,362	55	242,880	13	430,504	22	206,256	11	1,936,002
1984	1,145,867	55	290,796	14	372,368	18	282,447	14	2,091,478
1985	999,637	47	365,044	17	429,982	20	329,683	16	2,124,346
1986	1,131,425	47	469,890	19	423,538	18	387,289	16	2,412,142
1987	1,125,751	46	467,434	19	403,643	17	427,741	18	2,424,569
1988	1,249,384	47	484,206	18	414,430	16	519,771	19	2,667,791
1989	1,286,032	47	495,683	18	424,384	15	541,886	20	2,747,985
1990	1,403,058	47	512,871	17	489,460	16	580,590	19	2,985,979
1991	1,636,197	51	458,066	14	539,051	17	586,961	18	3,220,275
1992	1,568,915	49	463,386	14	503,396	16	696,270	22	3,231,967
1993	1,467,236	45	442,110	13	554,088	17	824,532	25	3,287,966
1994	1,611,134	47	449,237	13	562,096	16	802,736	23	3,425,203
1995	1,632,202	47	493,719	14	514,855	15	809,177	23	3,449,953
1996	1,626,400	47	505,557	15	489,079	14	818,107	24	3,439,143
1997	1,689,737	47	577,656	16	452,083	13	856,374	24	3,575,850
1998	2,084,253	53	547,251	14	469,574	12	831,339	21	3,932,417
1999	1,900,858	47	685,830	17	502,204	12	971,134	24	4,060,026
2000	1,975,730	49	664,297	16	459,662	11	927,961	23	4,027,650
2001	1,884,910	47	722,867	18	484,624	12	913,347	23	4,005,748
2002	2,070,959	49	764,115	18	394,379	9	1,003,922	24	4,233,375
2003	2,064,649	47	846,815	19	424,528	10	1,077,585	24	4,413,577
2004	2,259,120	51	644,363	14	419,111	9	1,148,811	26	4,471,405
2005	2,181,105	49	690,069	15	399,550	9	1,186,807	27	4,457,531
2006	2,216,354	50	627,596	14	381,814	9	1,168,961	27	4,394,725
2007	2,407,997	57	514,821	12	367,237	9	933,587	22	4,223,642
2008	2,460,036	56	626,441	14	364,356	8	911,028	21	4,361,861
2009	2,588,249	58	624,886	14	392,792	9	848,152	19	4,454,079
2010	2,480,388	58	544,209	13	415,628	10	854,577	20	4,294,802
2011	2,298,630	55	619,852	15	449,641	11	838,100	20	4,206,223
2012	2,632,692	58	617,200	14	465,367	10	832,138	18	4,547,397
2013	2,581,261	57	632,472	14	465,367	10	832,138	18	4,511,238

**Table 16. Discards (tonnes) by longliners in the WCPFC Statistical Area**  
(2010-2013 data are provisional)

YEAR	ALBACORE			BIGEYE			YELLOWFIN			TOTAL		
	Retained + Discarded	Discarded	%	Retained + Discarded	Discarded	%	Retained + Discarded	Discarded	%	Retained + Discarded	Discarded	%
1994	65,019	5,878	9.0%	81,531	2,413	3.0%	86,116	4,134	4.8%	232,667	12,425	5.3%
1995	63,341	3,097	4.9%	69,392	1,277	1.8%	92,743	4,674	5.0%	225,476	9,048	4.0%
1996	64,534	3,085	4.8%	59,096	1,040	1.8%	93,061	1,210	1.3%	216,691	5,335	2.5%
1997	80,358	8,534	10.6%	71,233	2,721	3.8%	84,138	3,206	3.8%	235,729	14,461	6.1%
1998	90,007	11,206	12.5%	88,037	3,072	3.5%	83,748	2,780	3.3%	261,792	17,059	6.5%
1999	69,591	766	1.1%	75,728	757	1.0%	72,147	1,162	1.6%	217,466	2,684	1.2%
2000	69,860	279	0.4%	77,363	433	0.6%	97,412	584	0.6%	244,635	1,297	0.5%
2001	88,865	4,017	4.5%	79,081	395	0.5%	95,971	451	0.5%	263,917	4,863	1.8%
2002	94,586	4,937	5.2%	93,784	1,407	1.5%	97,406	1,812	1.9%	285,776	8,156	2.9%
2003	79,259	468	0.6%	84,412	1,401	1.7%	97,713	2,062	2.1%	261,384	3,931	1.5%
2004	78,945	2,029	2.6%	101,195	1,488	1.5%	105,992	1,993	1.9%	286,132	5,509	1.9%
2005	84,307	1,256	1.5%	77,935	491	0.6%	83,133	623	0.8%	245,374	2,371	1.0%
2006	86,414	1,184	1.4%	82,559	644	0.8%	78,733	740	0.9%	247,706	2,568	1.0%
2007	81,020	859	1.1%	79,769	383	0.5%	74,419	350	0.5%	235,208	1,591	0.7%
2008	80,343	1,326	1.7%	81,102	965	1.2%	77,930	2,322	3.0%	239,375	4,613	1.9%
2009	100,298	1,184	1.2%	77,982	62	0.1%	91,685	486	0.5%	269,965	1,732	0.6%
2010	105,028	1,586	1.5%	68,979	41	0.1%	85,397	282	0.3%	259,405	1,909	0.7%
2011	87,027	1,227	1.4%	73,152	51	0.1%	84,482	194	0.2%	244,661	1,473	0.6%
2012	100,520	80	0.1%	79,444	24	0.0%	79,474	40	0.1%	259,438	144	0.1%
2013	101,824	1,171	1.2%	62,776	2,398	3.8%	67,926	2,860	4.2%	232,526	6,429	2.8%
Average	83,557	2,708	3.2%	78,228	1,073	1.4%	86,481	1,598	1.8%	248,266	5,380	2.2%

**Table 17. Discards (tonnes) by purse seiners in tropical waters of the WCPFC Statistical Area, excluding the domestic fisheries of Indonesia and the Philippines**

YEAR	SKIPJACK			YELLOWFIN			BIGEYE			TOTAL		
	Retained + Discarded	Discarded	%	Retained + Discarded	Discarded	%	Retained + Discarded	Discarded	%	Retained + Discarded	Discarded	%
1995	553,026	12,332	2.2%	183,319	2,108	1.2%	29,195	286	1.0%	765,539	14,727	1.9%
1996	513,622	16,539	3.2%	156,458	1,674	1.1%	37,872	795	2.1%	707,952	19,008	2.7%
1997	409,915	13,076	3.2%	270,691	1,841	0.7%	69,513	779	1.1%	750,119	15,696	2.1%
1998	578,579	18,341	3.2%	360,681	6,132	1.7%	65,876	685	1.0%	1,005,137	25,158	2.5%
1999	532,915	17,533	3.3%	286,106	5,808	2.0%	63,156	1,535	2.4%	882,177	24,876	2.8%
2000	610,753	29,072	4.8%	281,938	1,945	0.7%	40,242	1,107	2.8%	932,932	32,124	3.4%
2001	626,244	45,465	7.3%	267,484	1,953	0.7%	47,216	1,053	2.2%	940,945	48,471	5.2%
2002	773,391	23,511	3.0%	234,858	2,677	1.1%	60,024	708	1.2%	1,068,273	26,897	2.5%
2003	697,954	23,381	3.4%	270,009	4,914	1.8%	36,750	456	1.2%	1,004,713	28,751	2.9%
2004	766,199	34,556	4.5%	249,434	7,283	2.9%	61,851	1,719	2.8%	1,077,483	43,558	4.0%
2005	850,750	43,984	5.2%	304,142	7,208	2.4%	50,518	1,864	3.7%	1,205,411	53,056	4.4%
2006	928,134	21,161	2.3%	259,573	4,439	1.7%	50,145	632	1.3%	1,237,852	26,232	2.1%
2007	1,072,333	41,607	3.9%	259,949	4,601	1.8%	41,248	565	1.4%	1,373,529	46,773	3.4%
2008	997,798	20,455	2.1%	334,297	4,346	1.3%	51,465	1,420	2.8%	1,383,560	26,221	1.9%
2009	1,198,098	29,353	2.5%	275,350	4,185	1.5%	59,055	1,949	3.3%	1,532,503	35,488	2.3%
2010	1,113,015	15,582	1.4%	316,301	2,815	0.9%	50,436	711	1.4%	1,479,752	19,108	1.3%
2011	1,037,327	12,552	1.2%	288,350	2,653	0.9%	68,049	830	1.2%	1,393,725	16,035	1.2%
2012	1,223,153	18,103	1.5%	348,640	4,114	1.2%	67,149	463	0.7%	1,638,943	22,680	1.4%
2013	1,190,389	12,737	1.1%	289,201	2,024	0.7%	76,041	289	0.4%	1,555,631	15,051	1.0%
Average	824,926	23,649	2.9%	275,620	3,827	1.4%	53,989	939	1.7%	1,154,536	28,416	2.5%

**Table 18. Commercial catches of billfish in the WCPFC Statistical Area, by gear type and species**

YEAR	LONGLINE					PURSE SEINE		
	BLUE MARLIN	BLACK MARLIN	STRIPED MARLIN	SWORD-FISH	SUB-TOTAL	BLUE MARLIN	BLACK MARLIN	SUB-TOTAL
1962	14,197	2,091	15,207	10,354	41,849	0	0	0
1963	11,583	2,100	12,384	9,741	35,808	0	0	0
1964	10,240	1,697	17,023	5,942	34,902	0	0	0
1965	8,303	2,260	13,298	8,176	32,037	0	0	0
1966	8,763	2,408	9,648	9,821	30,640	0	0	0
1967	7,287	2,362	11,506	10,643	31,798	0	0	0
1968	6,673	2,951	11,783	9,504	30,911	0	1	1
1969	7,091	2,619	8,500	8,945	27,155	0	1	1
1970	9,977	3,544	7,594	7,578	28,693	6	14	20
1971	6,450	3,776	6,373	8,615	25,214	8	19	27
1972	7,957	3,696	5,194	8,110	24,957	9	20	29
1973	7,483	3,793	5,550	7,303	24,129	14	31	45
1974	7,253	3,115	4,788	7,990	23,146	7	17	24
1975	7,079	3,281	3,764	8,519	22,643	7	17	24
1976	6,710	2,242	3,497	9,955	22,404	6	16	22
1977	7,020	2,427	2,948	9,583	21,978	9	21	30
1978	8,861	2,787	3,744	9,871	25,263	8	20	28
1979	9,414	2,395	5,059	11,178	28,046	13	29	42
1980	10,245	1,552	4,823	8,740	25,360	13	29	42
1981	10,332	2,009	4,773	10,111	27,225	30	60	90
1982	10,398	2,023	4,536	9,214	26,171	42	90	132
1983	9,005	1,741	3,476	10,108	24,330	67	132	199
1984	12,197	1,317	4,836	9,975	28,325	86	161	247
1985	9,667	1,048	5,509	12,415	28,639	69	137	206
1986	10,348	1,121	6,175	11,473	29,117	66	128	194
1987	14,403	1,533	5,558	12,930	34,424	73	145	218
1988	14,553	2,294	7,613	12,804	37,264	71	142	213
1989	11,893	1,207	6,646	10,695	30,441	86	169	255
1990	10,200	1,120	4,871	11,470	27,661	95	184	279
1991	10,842	1,449	5,237	12,713	30,241	135	253	388
1992	13,302	1,650	5,363	18,322	38,637	141	241	382
1993	15,854	1,428	10,600	19,637	47,519	142	246	388
1994	15,609	1,844	6,189	17,057	40,699	141	239	380
1995	18,044	1,335	7,189	15,714	42,282	144	242	386
1996	14,526	945	5,834	15,177	36,482	160	263	423
1997	12,544	964	5,010	18,175	36,693	179	270	449
1998	16,449	1,545	7,080	19,299	44,373	182	267	449
1999	14,573	1,927	5,882	20,539	42,921	153	235	388
2000	13,797	1,296	4,264	21,214	40,571	184	273	457
2001	15,583	1,498	4,779	18,286	40,146	189	257	446
2002	15,527	1,795	4,375	18,889	40,586	205	278	483
2003	24,193	2,031	5,364	20,236	51,824	214	283	497
2004	21,847	2,293	4,955	22,065	51,160	226	293	519
2005	20,126	2,734	4,277	19,776	46,913	848	628	1,476
2006	17,850	2,430	4,028	22,690	46,998	611	399	1,010
2007	15,035	1,773	3,406	24,835	45,049	824	268	1,092
2008	14,806	1,768	3,639	22,523	42,736	592	442	1,034
2009	14,795	1,972	2,827	19,759	39,353	579	344	923
2010	15,672	2,092	2,854	17,343	37,961	644	661	1,305
2011	14,773	1,738	3,676	17,999	38,186	752	429	1,181
2012	14,288	1,544	3,705	19,020	38,557	918	367	1,285
2013	15,490	1,621	2,956	17,973	38,040	647	562	1,209

Table 18 continued

YEAR	OTHER COMMERCIAL GEARS					TOTAL
	BLUE MARLIN	BLACK MARLIN	STRIPED MARLIN	SWORD-FISH	SUB-TOTAL	
1962	1,023	65	0	38	1,126	42,975
1963	1,084	69	0	41	1,194	37,002
1964	1,187	73	2,366	1,203	4,829	39,731
1965	1,283	77	2,790	2,118	6,268	38,305
1966	1,379	82	1,676	1,934	5,071	35,711
1967	1,497	87	1,641	1,161	4,386	36,184
1968	1,528	92	1,255	1,883	4,758	35,670
1969	1,745	98	2,625	1,673	6,141	33,297
1970	1,850	125	1,184	1,895	5,054	33,767
1971	2,064	140	2,284	617	5,105	30,346
1972	2,154	146	1,369	436	4,105	29,091
1973	2,877	174	4,011	972	8,034	32,208
1974	3,238	201	3,930	1,789	9,158	32,328
1975	3,986	206	7,255	3,072	14,519	37,186
1976	3,603	175	4,163	4,138	12,079	34,505
1977	4,858	243	4,980	2,802	12,883	34,891
1978	3,604	156	6,035	2,855	12,650	37,941
1979	3,681	196	3,058	1,368	8,303	36,391
1980	3,631	177	4,008	2,308	10,124	35,526
1981	4,245	195	4,410	2,201	11,051	38,366
1982	3,904	175	2,997	1,643	8,719	35,022
1983	4,243	194	2,667	1,386	8,490	33,019
1984	3,536	211	3,060	1,420	8,227	36,799
1985	4,205	257	3,116	1,540	9,118	37,963
1986	4,045	268	4,181	1,633	10,127	39,438
1987	3,164	195	2,399	1,317	7,075	41,717
1988	3,750	222	2,880	1,552	8,404	45,881
1989	4,059	241	2,211	2,115	8,626	39,322
1990	5,251	342	2,489	1,388	9,470	37,410
1991	5,837	388	1,839	883	8,947	39,576
1992	3,046	218	1,515	1,393	6,172	45,191
1993	3,182	221	1,267	747	5,417	53,324
1994	4,673	289	1,824	924	7,710	48,789
1995	5,254	330	1,248	1,203	8,035	50,703
1996	5,688	339	912	1,260	8,199	45,104
1997	2,212	120	1,017	830	4,179	41,321
1998	2,365	138	1,421	1,082	5,006	49,828
1999	2,391	141	1,340	1,256	5,128	48,437
2000	1,558	96	1,380	1,404	4,438	45,466
2001	1,592	90	1,370	1,050	4,102	44,694
2002	1,611	99	1,587	1,452	4,749	45,818
2003	1,805	122	1,261	1,440	4,628	56,949
2004	1,825	126	1,466	1,383	4,800	56,479
2005	1,909	129	1,334	1,542	4,914	53,303
2006	1,955	142	1,308	1,447	4,852	52,860
2007	2,205	161	1,083	1,389	4,838	50,979
2008	3,784	186	1,446	1,227	6,643	50,413
2009	2,569	126	974	1,211	4,880	45,156
2010	2,794	126	1,042	856	4,818	44,084
2011	2,780	126	492	461	3,859	43,226
2012	2,731	129	741	627	4,228	44,070
2013	3,384	160	738	2,193	6,475	45,724

**Table 19. Commercial catches of billfish in the WCPFC Statistical Area, by species**

YEAR	BLUE MARLIN		BLACK MARLIN		STRIPED MARLIN		SWORDFISH		TOTAL
	TONNES	%	TONNES	%	TONNES	%	TONNES	%	
1962	15,220	35	2,156	5	15,207	35	10,392	24	42,975
1963	12,667	34	2,169	6	12,384	33	9,782	26	37,002
1964	11,427	29	1,770	4	19,389	49	7,145	18	39,731
1965	9,586	25	2,337	6	16,088	42	10,294	27	38,305
1966	10,142	28	2,490	7	11,324	32	11,755	33	35,711
1967	8,784	24	2,449	7	13,147	36	11,804	33	36,184
1968	8,201	23	3,044	9	13,038	37	11,387	32	35,670
1969	8,836	27	2,718	8	11,125	33	10,618	32	33,297
1970	11,833	35	3,683	11	8,778	26	9,473	28	33,767
1971	8,522	28	3,935	13	8,657	29	9,232	30	30,346
1972	10,120	35	3,862	13	6,563	23	8,546	29	29,091
1973	10,374	32	3,998	12	9,561	30	8,275	26	32,208
1974	10,498	32	3,333	10	8,718	27	9,779	30	32,328
1975	11,072	30	3,504	9	11,019	30	11,591	31	37,186
1976	10,319	30	2,433	7	7,660	22	14,093	41	34,505
1977	11,887	34	2,691	8	7,928	23	12,385	35	34,891
1978	12,473	33	2,963	8	9,779	26	12,726	34	37,941
1979	13,108	36	2,620	7	8,117	22	12,546	34	36,391
1980	13,889	39	1,758	5	8,831	25	11,048	31	35,526
1981	14,607	38	2,264	6	9,183	24	12,312	32	38,366
1982	14,344	41	2,288	7	7,533	22	10,857	31	35,022
1983	13,315	40	2,067	6	6,143	19	11,494	35	33,019
1984	15,819	43	1,689	5	7,896	21	11,395	31	36,799
1985	13,941	37	1,442	4	8,625	23	13,955	37	37,963
1986	14,459	37	1,517	4	10,356	26	13,106	33	39,438
1987	17,640	42	1,873	4	7,957	19	14,247	34	41,717
1988	18,374	40	2,658	6	10,493	23	14,356	31	45,881
1989	16,038	41	1,617	4	8,857	23	12,810	33	39,322
1990	15,546	42	1,646	4	7,360	20	12,858	34	37,410
1991	16,814	42	2,090	5	7,076	18	13,596	34	39,576
1992	16,489	36	2,109	5	6,878	15	19,715	44	45,191
1993	19,178	36	1,895	4	11,867	22	20,384	38	53,324
1994	20,423	42	2,372	5	8,013	16	17,981	37	48,789
1995	23,442	46	1,907	4	8,437	17	16,917	33	50,703
1996	20,374	45	1,547	3	6,746	15	16,437	36	45,104
1997	14,935	36	1,354	3	6,027	15	19,005	46	41,321
1998	18,996	38	1,950	4	8,501	17	20,381	41	49,828
1999	17,117	35	2,303	5	7,222	15	21,795	45	48,437
2000	15,539	34	1,665	4	5,644	12	22,618	50	45,466
2001	17,364	39	1,845	4	6,149	14	19,336	43	44,694
2002	17,343	38	2,172	5	5,962	13	20,341	44	45,818
2003	26,212	46	2,436	4	6,625	12	21,676	38	56,949
2004	23,898	42	2,712	5	6,421	11	23,448	42	56,479
2005	22,883	43	3,491	7	5,611	11	21,318	40	53,303
2006	20,416	39	2,971	6	5,336	10	24,137	46	52,860
2007	18,064	35	2,202	4	4,489	9	26,224	51	50,979
2008	19,182	38	2,396	5	5,085	10	23,750	47	50,413
2009	17,943	40	2,442	5	3,801	8	20,970	46	45,156
2010	19,110	43	2,879	7	3,896	9	18,199	41	44,084
2011	18,305	42	2,293	5	4,168	10	18,460	43	43,226
2012	17,937	41	2,040	5	4,446	10	19,647	45	44,070
2013	19,521	43	2,343	5	3,694	8	20,166	44	45,724

**Table 20. Commercial catches of striped marlin and swordfish in the WCPFC Statistical Area north of the equator**

YEAR	STRIPED MARLIN		SWORDFISH		TOTAL
	TONNES	%	TONNES	%	
1962	12,165	55	9,857	45	22,022
1963	9,550	51	9,029	49	18,579
1964	17,913	73	6,745	27	24,658
1965	14,194	60	9,377	40	23,571
1966	9,099	46	10,676	54	19,775
1967	11,802	52	10,920	48	22,722
1968	11,903	54	10,083	46	21,986
1969	10,107	51	9,694	49	19,801
1970	7,574	47	8,517	53	16,091
1971	6,572	47	7,290	53	13,862
1972	4,550	41	6,606	59	11,156
1973	7,496	53	6,769	47	14,265
1974	7,044	47	7,816	53	14,860
1975	9,788	48	10,406	52	20,194
1976	6,222	34	11,904	66	18,126
1977	7,021	38	11,643	62	18,664
1978	8,399	41	11,853	59	20,252
1979	6,605	37	11,011	63	17,616
1980	7,702	45	9,326	55	17,028
1981	7,200	42	10,047	58	17,247
1982	5,315	38	8,625	62	13,940
1983	4,948	33	10,133	67	15,081
1984	6,491	40	9,776	60	16,267
1985	7,312	38	11,990	62	19,302
1986	9,294	45	11,168	55	20,462
1987	6,629	36	11,903	64	18,532
1988	8,659	45	10,697	55	19,356
1989	6,510	39	10,262	61	16,772
1990	5,816	36	10,315	64	16,131
1991	5,769	34	11,179	66	16,948
1992	5,521	26	15,817	74	21,338
1993	10,364	37	17,600	63	27,964
1994	6,025	29	14,760	71	20,785
1995	6,550	32	13,962	68	20,512
1996	5,059	29	12,522	71	17,581
1997	4,329	24	13,694	76	18,023
1998	5,679	29	14,073	71	19,752
1999	4,936	25	15,022	75	19,958
2000	4,047	20	16,169	80	20,216
2001	4,331	25	13,060	75	17,391
2002	3,743	22	13,250	78	16,993
2003	3,962	21	14,749	79	18,711
2004	3,970	21	14,674	79	18,644
2005	3,466	20	13,475	80	16,941
2006	3,280	19	14,071	81	17,351
2007	2,701	15	14,840	85	17,541
2008	3,228	20	13,039	80	16,267
2009	2,118	15	12,154	85	14,272
2010	2,475	18	11,007	82	13,482
2011	2,669	18	12,398	82	15,067
2012	3,156	20	12,599	80	15,755
2013	2,683	17	13,282	83	15,965



**Table 21. Commercial catches of striped marlin and swordfish in the WCPFC Statistical Area south of the equator**

YEAR	STRIPED MARLIN		SWORDFISH		TOTAL
	TONNES	%	TONNES	%	
1962	3,042	85	535	15	3,577
1963	2,834	79	753	21	3,587
1964	1,473	79	397	21	1,870
1965	1,890	67	914	33	2,804
1966	2,139	67	1,044	33	3,183
1967	1,345	60	884	40	2,229
1968	1,135	47	1,304	53	2,439
1969	1,018	52	924	48	1,942
1970	1,204	56	956	44	2,160
1971	2,085	52	1,942	48	4,027
1972	2,013	51	1,940	49	3,953
1973	2,065	58	1,506	42	3,571
1974	1,674	46	1,963	54	3,637
1975	1,230	51	1,185	49	2,415
1976	1,438	40	2,189	60	3,627
1977	906	55	741	45	1,647
1978	1,380	61	873	39	2,253
1979	1,512	50	1,535	50	3,047
1980	1,129	40	1,722	60	2,851
1981	1,983	47	2,265	53	4,248
1982	2,219	50	2,232	50	4,451
1983	1,195	47	1,361	53	2,556
1984	1,406	46	1,619	54	3,025
1985	1,313	40	1,966	60	3,279
1986	1,060	35	1,938	65	2,998
1987	1,328	36	2,344	64	3,672
1988	1,833	33	3,655	67	5,488
1989	2,344	48	2,548	52	4,892
1990	1,535	38	2,543	62	4,078
1991	1,288	35	2,417	65	3,705
1992	1,305	25	3,898	75	5,203
1993	1,503	35	2,783	65	4,286
1994	1,988	38	3,230	62	5,218
1995	1,886	39	2,956	61	4,842
1996	1,687	30	3,915	70	5,602
1997	1,698	24	5,311	76	7,009
1998	2,761	30	6,309	70	9,070
1999	2,285	25	6,773	75	9,058
2000	1,597	20	6,449	80	8,046
2001	1,818	22	6,275	78	8,093
2002	2,219	24	7,091	76	9,310
2003	2,663	28	6,927	72	9,590
2004	2,453	23	8,045	77	10,498
2005	1,816	21	6,722	79	8,538
2006	1,795	17	8,925	83	10,720
2007	1,734	14	10,681	86	12,415
2008	1,905	15	10,454	85	12,359
2009	1,863	18	8,350	82	10,213
2010	1,597	17	7,653	83	9,250
2011	1,778	16	9,167	84	10,945
2012	1,728	14	10,208	86	11,936
2013	1,359	12	9,921	88	11,280

**Table 22. Commercial catches of albacore, striped marlin and swordfish in the South Pacific Ocean**

YEAR	ALBACORE		STRIPED MARLIN		SWORDFISH		TOTAL
	TONNES	%	TONNES	%	TONNES	%	
1962	35,219	100	0	0	0	0	35,219
1963	31,111	100	0	0	0	0	31,111
1964	22,824	100	3	0	3	0	22,830
1965	25,455	100	4	0	3	0	25,462
1966	38,661	100	86	0	35	0	38,782
1967	43,957	99	191	0	50	0	44,198
1968	32,382	99	229	1	106	0	32,717
1969	24,805	99	106	0	31	0	24,942
1970	34,925	99	261	1	40	0	35,226
1971	38,630	83	5,237	11	2,451	5	46,318
1972	39,521	85	4,307	9	2,604	6	46,432
1973	47,330	89	3,395	6	2,727	5	53,452
1974	34,049	86	3,042	8	2,556	6	39,647
1975	23,600	84	2,629	9	1,935	7	28,164
1976	29,082	80	3,919	11	3,398	9	36,399
1977	38,740	88	2,797	6	2,305	5	43,842
1978	34,676	86	2,827	7	2,670	7	40,173
1979	27,076	80	3,966	12	2,636	8	33,678
1980	32,541	83	3,533	9	3,322	8	39,396
1981	34,784	80	4,843	11	3,632	8	43,259
1982	30,788	79	4,719	12	3,312	9	38,819
1983	25,092	81	3,153	10	2,766	9	31,011
1984	24,704	83	2,447	8	2,641	9	29,792
1985	32,328	87	2,235	6	2,642	7	37,205
1986	36,590	86	2,722	6	3,293	8	42,605
1987	25,052	75	4,170	13	4,132	12	33,354
1988	37,867	80	3,657	8	5,717	12	47,241
1989	49,076	87	3,985	7	3,627	6	56,688
1990	36,062	81	3,903	9	4,736	11	44,701
1991	35,600	81	3,349	8	4,854	11	43,803
1992	38,668	79	3,202	7	7,186	15	49,056
1993	35,438	80	3,461	8	5,135	12	44,034
1994	42,318	82	4,097	8	5,442	10	51,857
1995	38,467	83	3,305	7	4,779	10	46,551
1996	34,359	79	3,536	8	5,618	13	43,513
1997	39,490	77	3,999	8	7,631	15	51,120
1998	50,371	79	4,506	7	8,621	14	63,498
1999	39,614	78	3,044	6	7,957	16	50,615
2000	47,338	82	2,283	4	8,182	14	57,803
2001	58,344	81	2,847	4	10,401	15	71,592
2002	73,240	79	4,090	4	15,365	17	92,695
2003	62,477	79	4,095	5	12,309	16	78,881
2004	61,871	74	3,481	4	17,766	21	83,118
2005	63,566	78	2,831	3	14,694	18	81,091
2006	62,444	76	2,617	3	17,193	21	82,254
2007	58,591	75	2,333	3	16,917	22	77,841
2008	62,740	76	2,404	3	17,000	21	82,144
2009	82,901	80	2,282	2	18,831	18	104,014
2010	88,942	80	2,128	2	19,679	18	110,749
2011	66,476	73	2,785	3	21,188	23	90,449
2012	87,752	77	2,651	2	23,238	20	113,641
2013	84,698	77	2,244	2	23,106	21	110,048