



**NORTHERN COMMITTEE
SEVENTH REGULAR SESSION**

6-9 September 2011
Sapporo, Japan

Preliminary Analysis of Pacific Bluefin Tuna Import from Korea in 2011

WCPFC-NC7/DP-01
29 August 2011

1. Background

Korea exports most of Pacific Bluefin tuna (PBF) caught by its purse seine vessels in its EEZ.

According to the ISC catch statistics and the Japanese trade statistics, it was found out that around 90% of Pacific bluefin tuna caught by Korean vessels has been exported to Japan.

Given such circumstances, Japan has started collecting detailed trade information on Pacific bluefin import from Korea since January 1st, 2010 and reported its findings to NC6(WCPFC-NC6/DP-03).

Table1: Korea's Catch/Export Ratio of PBFT

Year	Total Catch	Export to JPN	Export Ratio
2010	1,196t	1,045t	87%
2009	936t	917t	98%
2008	1,866t	1,218t	65%
2007	1,281t	988t	77%

Source: ISC statistics and Japan's Trade statistics

This paper provides the current situation of Korean PBF exports to Japan by analyzing import data collected by July 31, 2011.

2. Summary

- From **January 1 to July 31** of this year, **24 Korean purse seine vessels** caught **858.9t** of Pacific bluefin tuna in Korean EEZ, and **458.3t** were exported to Japan.
- **576.1t** out of 858.9t - around 67% - were caught by **5 purse seine vessels**.
- **135.3t** were imported in **May** followed by in June (119.9t) and in April (63t).
- Regarding size composition, **206.0t (45%)** were in **2-3 kg** category, **132.9t (29%)** were in **smaller than 2kg** category, and **119t (26%)** were in **3-5kg** category.
- On average, it takes **2.6 days** from catch to Japanese Fish Markets.
- The port of shipment in Korea is the **port of Busan**, which is a major landing port for Korean purse seiners, and a major port of destination in Japan is the **port of Fukuoka**, where more than 94% of the bluefin tuna imported from Korea were auctioned.
- About 88% of the exports were handled by 4 major exporters in Korea, and 92% of the imports were handled by 5 major importers in Japan.

3. Details

(1) Reporting Requirement for importers and wholesalers

Starting on January 1, 2010, importers and wholesalers, engaged in Pacific bluefin tuna trade from Korea to Japan, must present a trade and/or sales report to the Japanese Fisheries Agency (JFA) for each transaction, in accordance with Article 10, the Special Law for Conservation and Management of Tuna Resources. The reporting format was revised and became effective on March 11, 2011 to acquire more detailed size information; former 5-50kg category was divided into three categories, 5-10kg, 10-30kg, and 30-50kg.

(2) Information Obtained

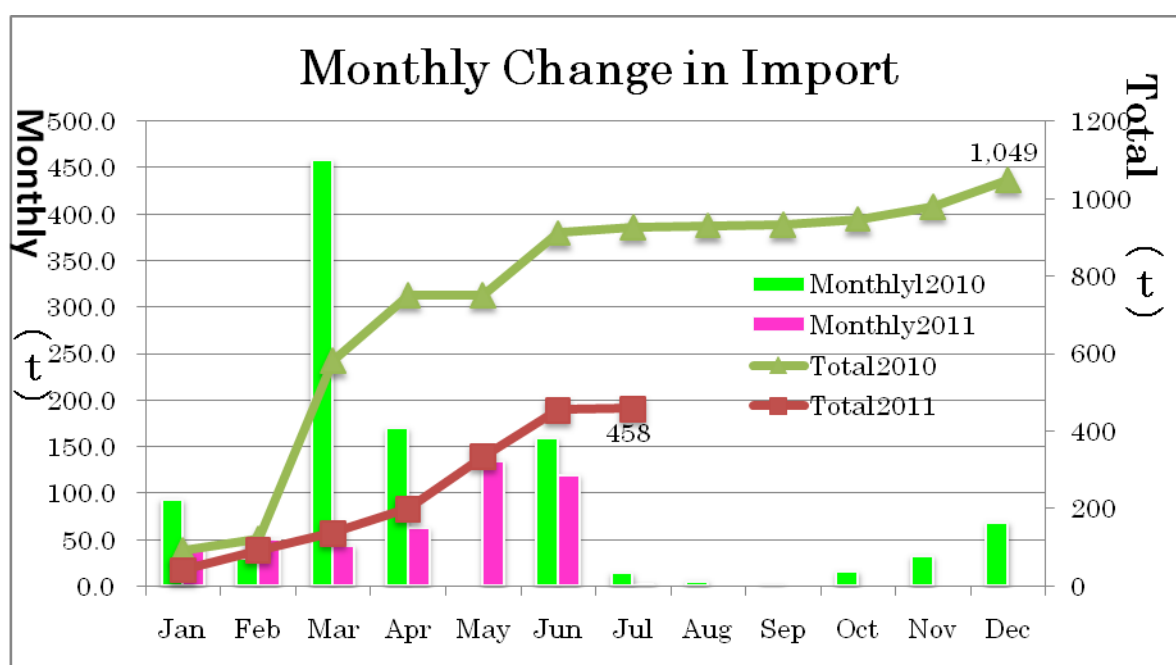
● Number of Imports and Their Volume

During the period **from January 1st to July 31st**, the total number of import transactions was **179** and **458.3t**; all of the imports were in RD fashion.

● Monthly Change in Import

The amount of import by month was as follows:

January: 42.4t, February: 51.0t, March 43.8t, April: 63.0t, May: 135.3t, June: 119.9t, July:3.0t

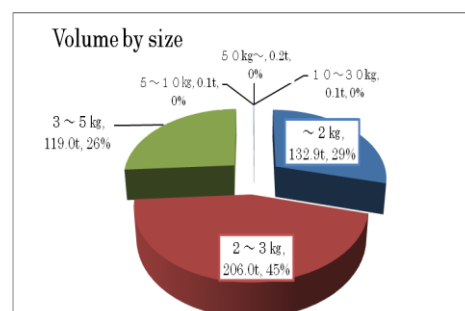


● Size Composition

Regarding size composition, **206t (45%)** were in **2-3 kg** category, **132.9t (29%)** were in **smaller than 2kg** category, and **119t (26%)** were in **3-5kg** category.

● Vessels Information

According to the trade reports, all of the imported tuna were caught by **24 Korean purse seine vessels**; those vessels caught **858.9t** and, among them, **458.3t (53%)** was exported to Japan. In addition,



576.1t out of 858.9t (67%) was caught by **5 purse seiners**:

Vessel A: **173.4t**, Vessel B: **155.0t**, Vessel C: **131.4t**, Vessel D: **62.0t**, Vessel E: **54.4t**

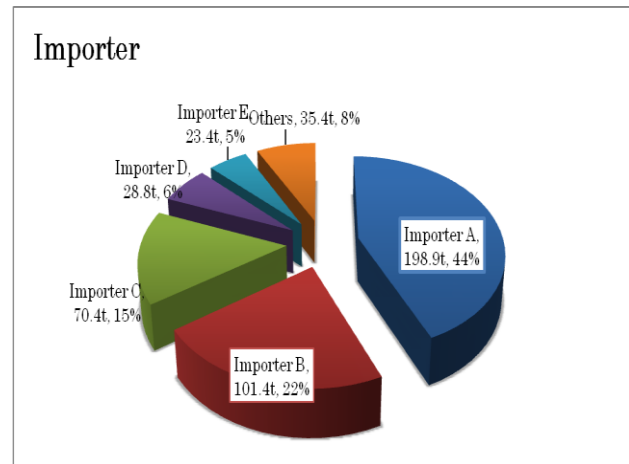
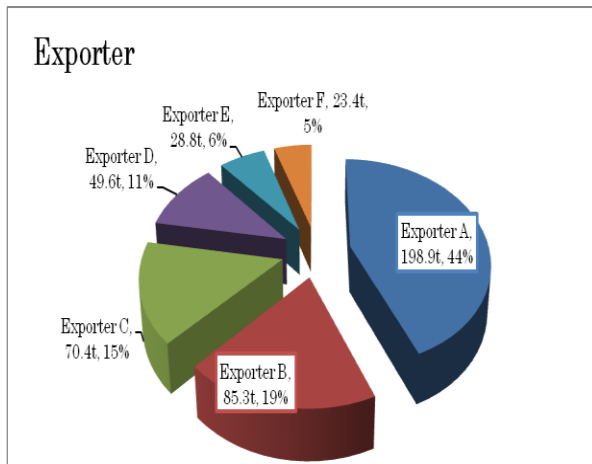
Accumulated fishing days were **170 days**, and the average catch of one fishing day was around **5.1t**. However, the average catch of the **5 vessels** above was **8.6t**, while the figure for the rest of **19 vessels** was **2.7t**.

- **Transportation**

All of the import products were transported by marine freights such as commercial ferries and fish carriers from the port of Busan, Korea, mostly to Fukuoka, Japan. The average time from catch to import was **2.6 days** ranging from 1 to 7 days. About 94% of the imported products were auctioned at two fish markets in Fukuoka, and distributed to other areas. **Attachment B** illustrates the geographic relations between fishing ground and major ports.

- **Exporters and Importers**

About **88%** of the exports were handled by the **4 major exporters** in Korea, and **92%** of the imports were handled by **5 major importers** in Japan.



***Disguised Exportation**

On 8 August, 2 tons of “skipjack” caught by set-net in Korea were imported with document endorsed by a Korean export authority. However, it turned out that all fish were Pacific bluefin smaller than 5kg when containers were opened for auction. It was the first malpractice identified.