



**SCIENTIFIC COMMITTEE
NINTH REGULAR SESSION**

Pohnpei, Federated States of Micronesia
6-14 August 2013

ESTIMATES OF ANNUAL CATCHES IN THE WCPFC STATISTICAL AREA

WCPFC-SC9-2013/ST IP-1 (rev. 1)

Paper prepared by

Oceanic Fisheries Programme (OFP)
Secretariat of the Pacific Community (SPC)
Noumea, New Caledonia

Introduction

Estimates of annual catches in the WCPFC Statistical Area (Figure 1) are presented for target tuna species, i.e., albacore (*Thunnus alalunga*) bigeye (*Thunnus obesus*), skipjack (*Katsuwonus pelamis*) and yellowfin (*Thunnus albacares*), and major billfish species, i.e., black marlin (*Makaira indica*), blue marlin (*Makaira mazara*), striped marlin (*Tetrapturus audax*) and swordfish (*Xiphias gladius*). Estimates of catches of southern bluefin tuna (*Thunnus maccoyii*) are compiled by the Commission for the Conservation of Southern Bluefin Tuna (CCSBT).

Annual catch estimates have been received for the first time for the fleet from Portugal (longline).

Target Tuna Species

Tables 1–7 and Figures 2 and 3 present estimates of annual catches of target tunas in the WCPFC Statistical Area. For a breakdown of recent catch estimates by gear and flag, see WCPFC (2012). For discussion regarding trends, see Williams & Terawasi (2013) and Harley & Williams (2013).

Recent studies using observer data (e.g. Lawson, 2007, Lawson, 2010, Lawson, 2012, Hampton and Williams, 2011) show that the logsheet-reported catch, mainly for associated sets, should contain higher quantities of yellowfin and bigeye tuna that have been misreported as skipjack tuna. Purse-seine catch estimates that have been adjusted with species compositions determined from observer grab samples corrected for size selectivity bias (see Lawson, 2010, Lawson, 2012 and Lawson, 2013) are presented as the official purse-seine catch estimates in Table 5. All composite tables and figures referring to purse-seine species catch are consistent with the Table 5 estimates of purse-seine catches of skipjack, yellowfin and bigeye tuna.

Tables 7–10 present estimates of annual catches of target tunas in the WCPO Area and the EPO Area (Figure 1) by gear type. Tables 11–13 present estimates of annual catches of target tunas for the WCPO, the EPO and the Pacific Ocean by species. Table 14 and 15, and Figures 4 and 5 present global catches of target tunas, by species and ocean area respectively.

Tuna Discards

Observer data have been used to determine the discard rates for albacore, bigeye and yellowfin and bigeye caught by longliners (Table 16) and skipjack, yellowfin and bigeye caught by purse seiners (Table 17).

Tuna discards by longliners in the WCPFC Statistical Area during 1994–2012 were estimated by applying discard rates by flag and year, determined from observer data, to tuna species catch estimates, by flag and year, and then summing the tuna discards (by species) across all flags. Discard rates for flag/year combinations where there were insufficient data (defined as (i) less than 10 observer trips or (ii) less than 500 fish samples available), were substituted with discard rates determined for year (with all flags combined). The total discard rate for the three target tuna species caught by longliners during the period was 2.2%, with less than < 0.1% of estimated discard in 2012 (a provisional estimate based on very low observer coverage).

Tuna discards by purse seiners in the WCPFC Statistical Area during 1995–2012 were estimated by applying discard rates by flag, year and school association (unassociated and associated), determined from observer data, to tuna species catch estimates, by flag, year and school association, and then summing the tuna discards (by species) across all flags. Discard rates for flag/year/school association combinations where there were insufficient data (defined as (i) less than 5 observer trips or (ii) less than 1,000 mt of catch observed), were substituted with discard rates determined for school association (with all years/flags combined) for years prior to 2008, and substituted with discard rates determined for year/school association (with all flags combined) for years since 2008. This method was used since an analysis of variance of discard rates for skipjack, yellowfin and bigeye caught by purse seiners indicated that species, school association and flag, but not year, were significant predictors. However, in recent years, there have been management measures (CMM 2009-02) introduced to restrict the discard of tuna which means that the year effect has been

considered in the estimation process for recent years. The total discard rate for the three target tuna species caught by purse seiners during the period was 2.6%, with an estimated 1.3% discarded in 2012. [Note that the reporting of purse-seine discards as a requirement under CMM 2009-02 is presented in WCPFC (2013) and is independent to the estimates produced in this paper].

Major Billfish Species

Table 18 presents estimates of commercial catches of the four major billfish species by gear type. Table 19 and Figure 6 present estimates of the major billfish catches for all gear types combined. Tables 20 and 21 present estimates of commercial catches of striped marlin and swordfish in the WCPFC Statistical Area north and south of the equator respectively. Table 22 present estimates of commercial catches of albacore, striped marlin and swordfish in the Pacific Ocean, south of the equator.

REFERENCES

- Hampton J. & P.G. Williams 2011. Misreporting of purse seine catches of skipjack and yellowfin-bigeye on logsheets. Working Paper ST-WP-2. Seventh Regular Session of the Scientific Committee of the WCPFC. Pohnpei, FSM. 9th–17th August 2011.
- Harley S. & P.G. Williams 2013. Fishery indicators for bigeye, skipjack, and yellowfin tunas in the WCPO, and swordfish in the southern WCPO. Working Paper SA-WP-6. Ninth Regular Session of the Scientific Committee of the WCPFC. Pohnpei, FSM. 6–14 August 2013. Oceanic Fisheries Programme, Secretariat of the Pacific Community, Noumea, New Caledonia
- Lawson, T.A. 2007. Further analysis of the proportion of bigeye in ‘yellowfin plus bigeye’ caught by purse seiners in the WCPFC Statistical Area. Information Paper ST-IP-5. Third Regular Session of the WCPFC Scientific Committee, 13–24 August 2006, Honolulu, Hawaii, United States of America. Oceanic Fisheries Programme, Secretariat of the Pacific Community, Noumea, New Caledonia.
- Lawson, T.A. 2010. Update on the estimation of selectivity bias based on paired spill and grab samples collected by observers on purse seiners in the Western and Central Pacific Ocean. Working Paper ST-WP-2. Sixth Regular Session of the Scientific Committee of the WCPFC. Nuku'alofa, Tonga. 10–19 August 2010.
- Lawson, T.A. 2012. Estimation of the species composition of the catch by purse seiners in the Western and Central Pacific Ocean using grab samples and spill samples collected by observers. Working Paper ST-WP-3. Eighth Regular Session of the Scientific Committee of the WCPFC. Busan, Republic of Korea. 7–15 August 2012.
- Lawson, T.A. 2013. Estimation of the species composition of the catch by purse seiners in the Western and Central Pacific Ocean – a response to recent independent reviews. Working Paper ST-WP-3. Ninth Regular Session of the Scientific Committee of the WCPFC. Pohnpei, FSM. 6–14 August 2013..
- WCPFC. 2012. WCPFC Tuna Fishery Yearbook, 2011. Western and Central Pacific Fisheries Commission, Pohnpei, Federated States of Micronesia.
- WCPFC. 2013. Summary of Catch discard reporting received by WCPFC under CMM 2009-02. Information Paper EB-1. Ninth Regular Session of the Scientific Committee of the WCPFC. Pohnpei, FSM. 6–14 August 2013.
- Williams, P. & P. Terawasi. 2013. Overview of tuna fisheries in the Western and Central Pacific Ocean, Including Economic Conditions – 2012. Working Paper GN-WP-1. Ninth Regular Session of the Scientific Committee of the WCPFC. Pohnpei, FSM. 6–14 August 2013. Oceanic Fisheries Programme, Secretariat of the Pacific Community, Noumea, New Caledonia and Pacific Islands Forum Fisheries Agency, Honiara, Solomon Islands.

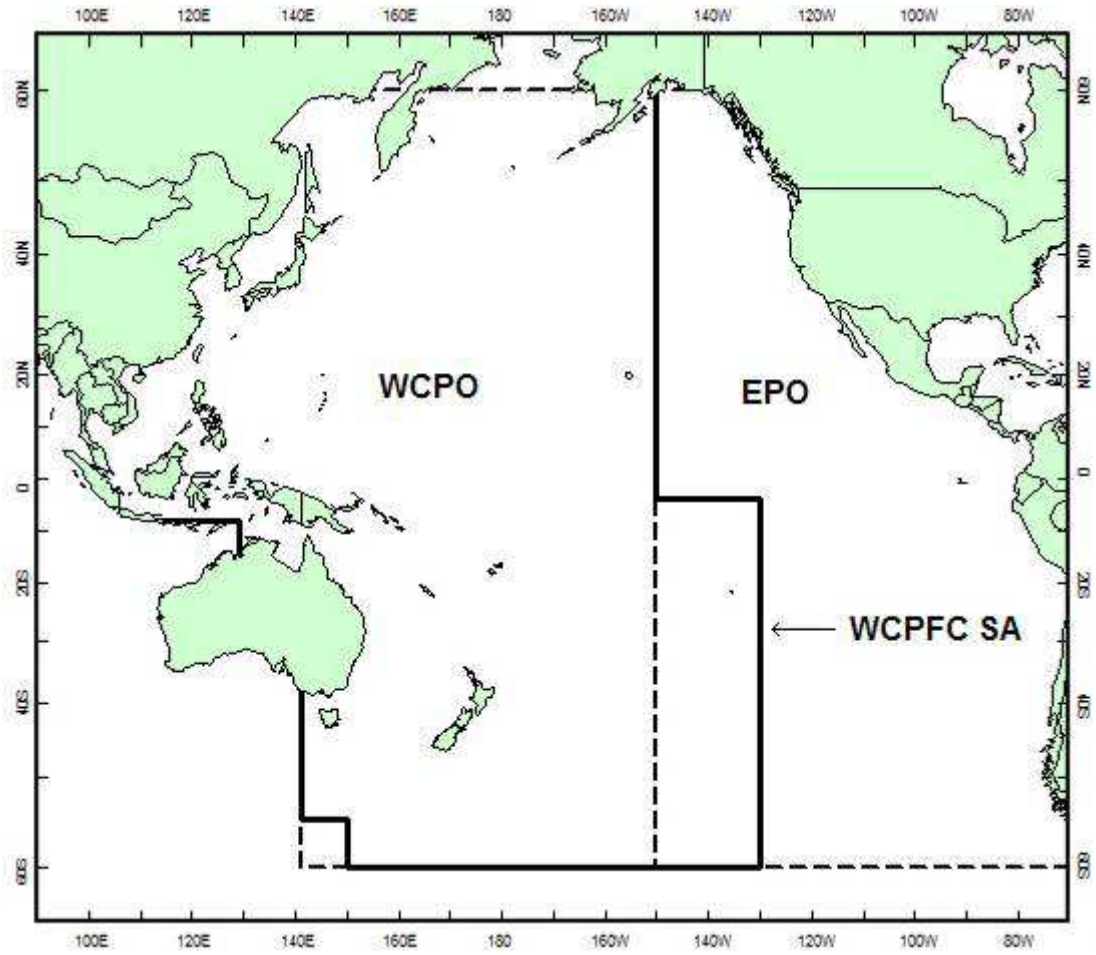


Figure 1. WCPFC Statistical Area (WCPFC SA), the Western and Central Pacific Ocean (WCPO) Area and the Eastern Pacific Ocean (EPO) Area

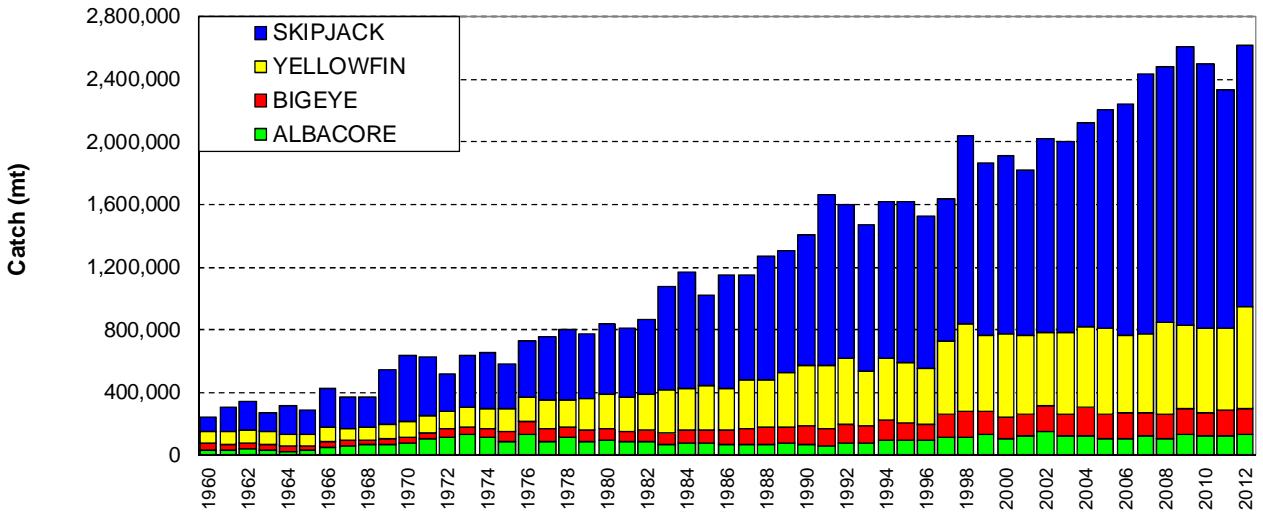


Figure 2. Catches of tuna in the WCPFC Statistical Area, by species

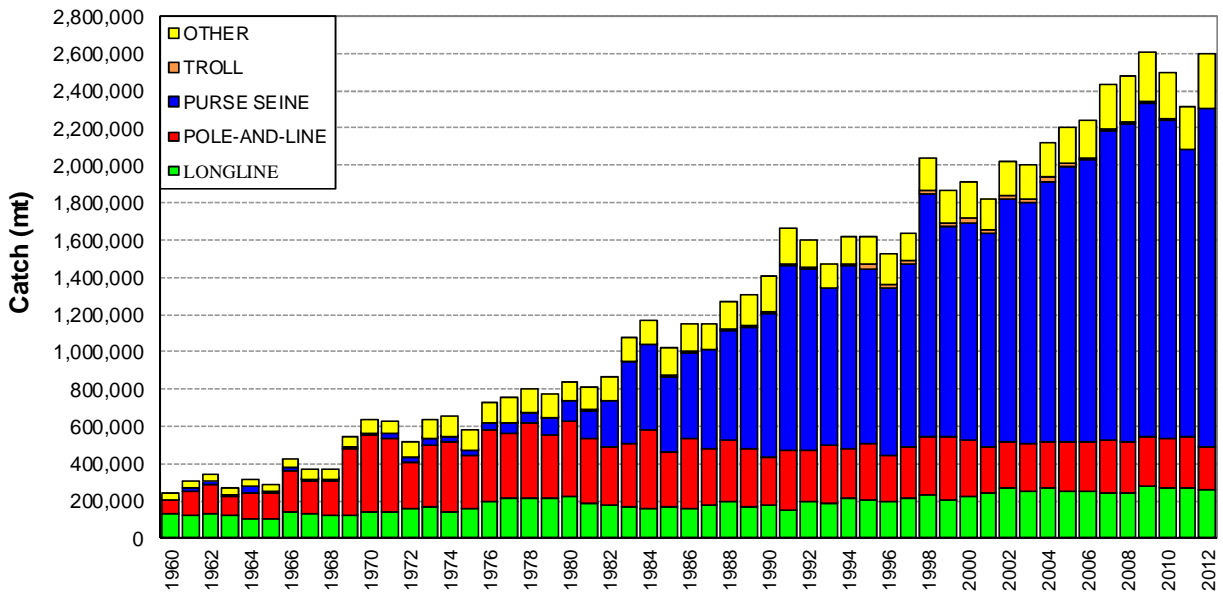


Figure 3. Catches of tuna in the WCPFC Statistical Area, by gear type

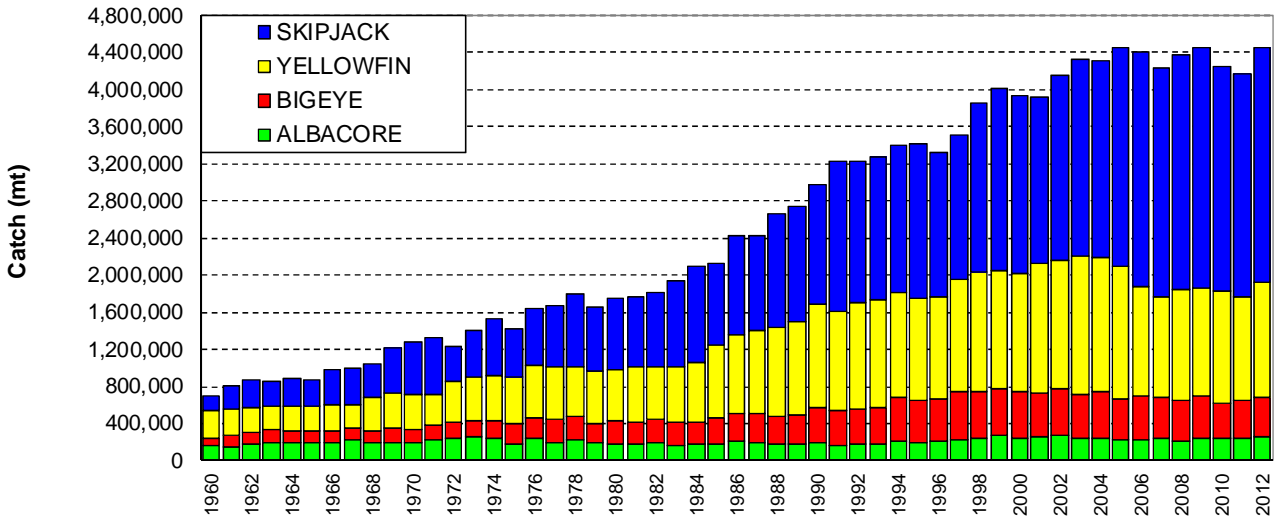


Figure 4. Global catches of tuna, by species

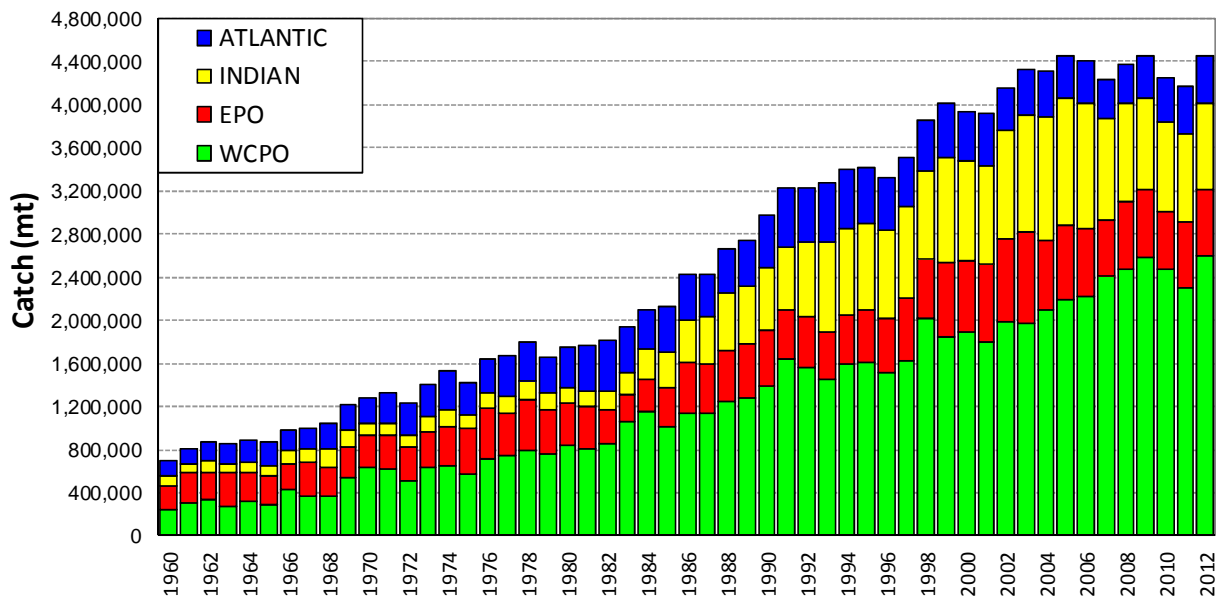


Figure 5. Global catches of tuna, by ocean area

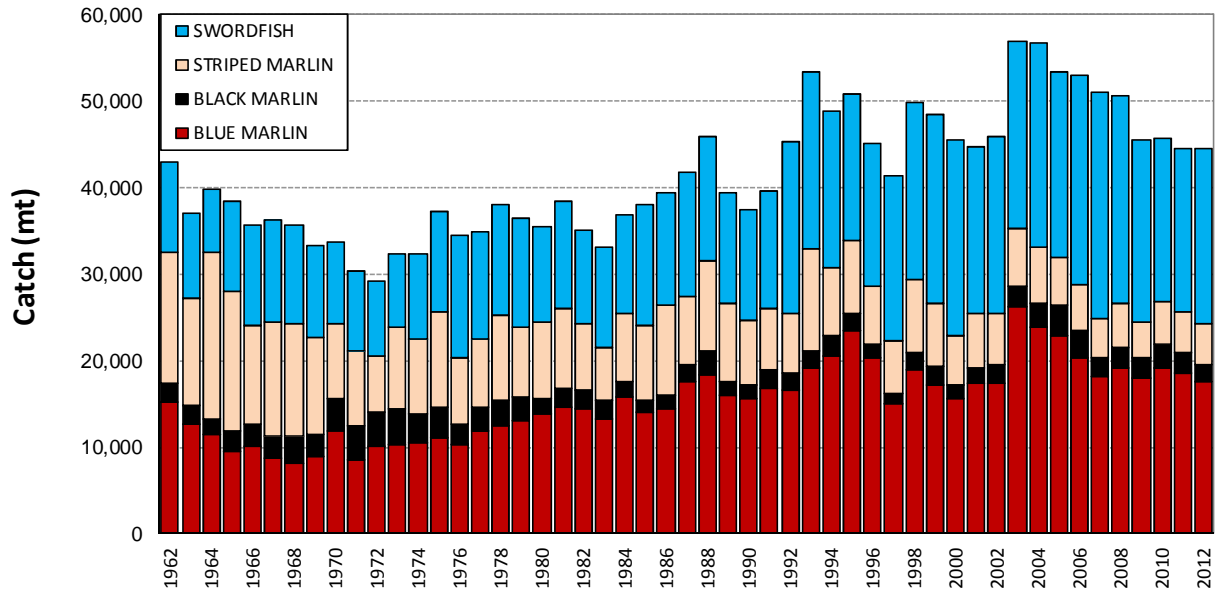


Figure 6. Commercial catches of major billfish species in the WCPCF Statistical Area

Table 1. Catches of target tunas in the WCPFC Statistical Area, by species

YEAR	ALBACORE		BIGEYE		SKIPJACK		YELLOWFIN		TOTAL
	TONNES	%	TONNES	%	TONNES	%	TONNES	%	
1960	31,463	13	45,025	19	89,938	37	73,667	31	240,093
1961	32,922	11	39,380	13	156,736	51	75,438	25	304,476
1962	37,602	11	36,868	11	181,624	53	83,944	25	340,038
1963	26,815	10	44,346	16	122,703	46	75,756	28	269,620
1964	26,687	8	32,391	10	182,918	58	74,154	23	316,150
1965	28,735	10	31,333	11	155,221	54	73,635	25	288,924
1966	52,284	12	33,187	8	249,514	58	93,099	22	428,084
1967	58,822	16	36,749	10	204,840	55	68,929	19	369,340
1968	64,213	17	30,426	8	195,031	52	81,904	22	371,574
1969	72,106	13	34,361	6	351,031	64	87,278	16	544,776
1970	74,350	12	40,102	6	423,398	66	99,169	16	637,019
1971	100,737	16	43,233	7	380,853	60	105,152	17	629,975
1972	109,655	21	57,156	11	237,764	46	116,210	22	520,785
1973	131,149	21	48,855	8	328,748	52	128,522	20	637,274
1974	115,162	18	52,808	8	356,200	54	131,545	20	655,715
1975	84,651	15	69,360	12	288,310	49	141,391	24	583,712
1976	132,947	18	82,752	11	357,207	49	153,111	21	726,017
1977	83,171	11	83,315	11	403,610	54	184,009	24	754,105
1978	111,161	14	66,386	8	449,032	56	177,772	22	804,351
1979	86,007	11	73,581	10	412,486	53	199,546	26	771,620
1980	95,156	11	71,614	9	456,150	54	217,932	26	840,852
1981	88,095	11	63,039	8	436,845	54	223,460	28	811,439
1982	89,496	10	70,671	8	479,289	55	224,306	26	863,762
1983	65,988	6	75,607	7	655,661	61	275,855	26	1,073,111
1984	74,540	6	83,708	7	736,467	63	271,149	23	1,165,864
1985	77,060	8	86,879	9	577,090	57	276,387	27	1,017,416
1986	71,757	6	91,875	8	729,102	63	260,398	23	1,153,132
1987	63,645	6	107,390	9	663,864	58	310,922	27	1,145,821
1988	67,948	5	108,195	9	794,201	62	300,504	24	1,270,848
1989	73,533	6	106,328	8	779,484	60	342,292	26	1,301,637
1990	63,872	5	123,006	9	842,097	60	380,891	27	1,409,866
1991	58,322	4	108,483	7	1,084,192	65	408,098	25	1,659,095
1992	74,452	5	126,401	8	976,914	61	417,192	26	1,594,959
1993	77,496	5	106,179	7	932,393	63	354,236	24	1,470,304
1994	96,461	6	124,159	8	997,280	62	396,413	25	1,614,313
1995	91,750	6	110,158	7	1,030,960	64	384,554	24	1,617,422
1996	91,140	6	107,733	7	970,256	64	355,393	23	1,524,522
1997	112,900	7	151,993	9	910,613	56	460,824	28	1,636,330
1998	112,465	6	170,815	8	1,195,621	59	556,066	27	2,034,967
1999	131,066	7	150,460	8	1,099,932	59	481,597	26	1,863,055
2000	101,171	5	139,861	7	1,142,491	60	529,631	28	1,913,154
2001	121,561	7	143,171	8	1,058,209	58	498,716	27	1,821,657
2002	147,793	7	168,869	8	1,232,665	61	468,861	23	2,018,188
2003	122,949	6	139,243	7	1,219,482	61	521,420	26	2,003,094
2004	122,343	6	183,355	9	1,300,932	61	515,489	24	2,122,119
2005	105,135	5	152,301	7	1,395,166	63	549,501	25	2,202,103
2006	104,986	5	161,980	7	1,480,028	66	498,452	22	2,245,446
2007	126,701	5	145,479	6	1,658,871	68	503,989	21	2,435,040
2008	104,966	4	156,014	6	1,640,700	66	581,948	23	2,483,628
2009	135,476	5	159,467	6	1,775,462	68	532,941	20	2,603,346
2010	126,470	5	140,843	6	1,684,849	67	546,812	22	2,498,974
2011	125,927	5	159,810	7	1,521,297	65	521,448	22	2,328,482
2012	131,872	5	161,679	6	1,664,309	64	655,668	25	2,613,528

Table 2. Catches of target tunas in the WCPFC Statistical Area, by gear type

YEAR	LONGLINE		POLE-AND-LINE		PURSE SEINE		TROLL		OTHER		TOTAL
	TONNES	%	TONNES	%	TONNES	%	TONNES	%	TONNES	%	
1960	129,874	54	73,800	31	5,224	2	0	0	31,195	13	240,093
1961	123,330	41	132,070	43	14,540	5	0	0	34,536	11	304,476
1962	128,804	38	157,412	46	18,875	6	0	0	34,947	10	340,038
1963	122,263	45	98,628	37	11,934	4	0	0	36,795	14	269,620
1964	102,481	32	143,323	45	29,012	9	0	0	41,334	13	316,150
1965	103,955	36	134,621	47	8,621	3	0	0	41,727	14	288,924
1966	145,278	34	218,900	51	16,913	4	0	0	46,993	11	428,084
1967	128,047	35	174,774	47	14,508	4	5	0	52,006	14	369,340
1968	120,136	32	183,954	50	15,143	4	14	0	52,327	14	371,574
1969	122,806	23	354,784	65	9,483	2	0	0	57,703	11	544,776
1970	141,360	22	409,754	64	16,222	3	50	0	69,633	11	637,019
1971	143,625	23	392,914	62	24,511	4	0	0	68,925	11	629,975
1972	161,533	31	242,745	47	29,030	6	268	0	87,209	17	520,785
1973	166,399	26	330,841	52	36,269	6	484	0	103,281	16	637,274
1974	145,192	22	370,499	57	29,548	5	898	0	109,578	17	655,715
1975	164,049	28	279,663	48	27,685	5	646	0	111,669	19	583,712
1976	198,013	27	382,627	53	40,770	6	25	0	104,582	14	726,017
1977	218,413	29	345,257	46	53,492	7	621	0	136,322	18	754,105
1978	212,059	26	407,482	51	52,040	6	1,686	0	131,084	16	804,351
1979	211,221	27	344,799	45	90,102	12	814	0	124,684	16	771,620
1980	227,707	27	395,746	47	113,265	13	1,489	0	102,645	12	840,852
1981	188,516	23	343,584	42	153,906	19	2,118	0	123,315	15	811,439
1982	177,765	21	309,802	36	249,234	29	2,552	0	124,409	14	863,762
1983	170,385	16	338,181	32	436,508	41	949	0	127,088	12	1,073,111
1984	157,072	13	422,512	36	456,466	39	3,124	0	126,690	11	1,165,864
1985	172,886	17	293,206	29	403,252	40	3,468	0	144,604	14	1,017,416
1986	163,964	14	368,730	32	464,460	40	2,284	0	153,694	13	1,153,132
1987	180,581	16	297,935	26	531,142	46	2,350	0	133,813	12	1,145,821
1988	200,281	16	324,805	26	592,610	47	4,671	0	148,481	12	1,270,848
1989	164,878	13	317,802	24	646,441	50	8,687	1	163,829	13	1,301,637
1990	181,591	13	250,390	18	773,732	55	7,219	1	196,934	14	1,409,866
1991	154,805	9	314,979	19	993,151	60	8,004	0	188,156	11	1,659,095
1992	192,364	12	282,598	18	966,313	61	6,844	0	146,840	9	1,594,959
1993	187,553	13	307,966	21	845,647	58	4,612	0	124,526	8	1,470,304
1994	211,638	13	271,071	17	977,649	61	7,493	0	146,462	9	1,614,313
1995	207,042	13	297,106	18	939,173	58	23,585	1	150,516	9	1,617,422
1996	197,234	13	251,053	16	897,906	59	17,807	1	160,522	11	1,524,522
1997	213,450	13	273,844	17	981,358	60	18,732	1	148,946	9	1,636,330
1998	233,645	11	313,968	15	1,297,727	64	19,099	1	170,528	8	2,034,967
1999	202,973	11	338,832	18	1,131,139	61	13,476	1	176,635	9	1,863,055
2000	226,730	12	299,976	16	1,168,429	61	25,845	1	192,174	10	1,913,154
2001	246,221	14	243,337	13	1,144,442	63	17,329	1	170,328	9	1,821,657
2002	266,963	13	254,785	13	1,297,473	64	16,129	1	182,838	9	2,018,188
2003	250,160	12	260,875	13	1,292,289	65	19,875	1	179,895	9	2,003,094
2004	266,581	13	253,330	12	1,393,992	66	23,445	1	184,771	9	2,122,119
2005	250,167	11	266,663	12	1,479,329	67	13,293	1	192,651	9	2,202,103
2006	255,328	11	257,485	11	1,512,944	67	10,098	0	209,591	9	2,245,446
2007	245,129	10	284,564	12	1,656,446	68	9,249	0	239,652	10	2,435,040
2008	245,509	10	269,304	11	1,709,351	69	11,740	0	247,724	10	2,483,628
2009	279,012	11	264,246	10	1,785,627	69	9,894	0	264,567	10	2,603,346
2010	269,885	11	270,004	11	1,697,660	68	11,320	0	250,105	10	2,498,974
2011	266,913	11	276,765	12	1,543,909	66	11,966	1	228,929	10	2,328,482
2012	262,076	10	224,207	9	1,816,503	70	12,421	0	298,321	11	2,613,528

Table 3. LONGLINE catches in the WCPFC Statistical Area, by species

YEAR	ALBACORE		BIGEYE		SKIPJACK		YELLOWFIN		TOTAL
	TONNES	%	TONNES	%	TONNES	%	TONNES	%	
1960	31,387	24	43,467	33	0	0	55,020	42	129,874
1961	32,647	26	37,517	30	0	0	53,166	43	123,330
1962	37,358	29	35,895	28	4	0	55,547	43	128,804
1963	26,538	22	42,540	35	0	0	53,185	44	122,263
1964	26,240	26	30,989	30	5	0	45,247	44	102,481
1965	28,603	28	29,848	29	11	0	45,493	44	103,955
1966	51,588	36	31,984	22	52	0	61,654	42	145,278
1967	58,208	45	33,632	26	124	0	36,083	28	128,047
1968	46,226	38	27,757	23	83	0	46,070	38	120,136
1969	38,478	31	32,571	27	130	0	51,627	42	122,806
1970	48,981	35	34,965	25	1,608	1	55,806	39	141,360
1971	46,025	32	38,359	27	1,475	1	57,766	40	143,625
1972	47,774	30	51,040	32	1,544	1	61,175	38	161,533
1973	59,835	36	42,412	25	1,861	1	62,291	37	166,399
1974	39,299	27	45,653	31	2,124	1	58,116	40	145,192
1975	31,180	19	61,488	37	1,919	1	69,462	42	164,049
1976	45,022	23	73,325	37	2,096	1	77,570	39	198,013
1977	48,789	22	72,083	33	3,127	1	94,414	43	218,413
1978	42,260	20	56,237	27	3,233	2	110,329	52	212,059
1979	36,295	17	63,704	30	2,179	1	109,043	52	211,221
1980	42,343	19	61,857	27	632	0	122,875	54	227,707
1981	47,272	25	45,823	24	756	0	94,665	50	188,516
1982	43,876	25	47,886	27	1,015	1	84,988	48	177,765
1983	36,784	22	45,270	27	2,144	1	86,187	51	170,385
1984	31,277	20	51,889	33	870	1	73,036	46	157,072
1985	38,012	22	57,501	33	1,108	1	76,265	44	172,886
1986	41,702	25	55,804	34	1,439	1	65,019	40	163,964
1987	33,398	18	68,042	38	2,329	1	76,812	43	180,581
1988	41,694	21	67,250	34	1,937	1	89,400	45	200,281
1989	30,147	18	63,316	38	2,507	2	68,908	42	164,878
1990	32,170	18	75,141	41	363	0	73,917	41	181,591
1991	35,459	23	59,237	38	885	1	59,224	38	154,805
1992	45,551	24	73,873	38	432	0	72,508	38	192,364
1993	56,183	30	64,553	34	573	0	66,244	35	187,553
1994	59,629	28	76,851	36	379	0	74,779	35	211,638
1995	60,388	29	65,649	32	598	0	80,407	39	207,042
1996	61,590	31	54,027	27	3,935	2	77,682	39	197,234
1997	72,643	34	65,656	31	4,070	2	71,081	33	213,450
1998	80,042	34	81,123	35	5,030	2	67,450	29	233,645
1999	68,834	34	71,286	35	4,208	2	58,645	29	202,973
2000	69,582	31	73,053	32	4,559	2	79,536	35	226,730
2001	85,022	35	75,388	31	5,059	2	80,752	33	246,221
2002	89,894	34	89,791	34	3,450	1	83,828	31	266,963
2003	78,794	31	81,043	32	3,824	2	86,499	35	250,160
2004	76,967	29	96,445	36	4,051	2	89,118	33	266,581
2005	83,069	33	80,110	32	1,084	0	85,904	34	250,167
2006	85,246	33	85,719	34	1,528	1	82,835	32	255,328
2007	80,170	33	83,931	34	1,175	0	79,853	33	245,129
2008	79,039	32	84,473	34	817	0	81,180	33	245,509
2009	99,128	36	82,108	29	1,225	0	96,551	35	279,012
2010	103,364	38	73,882	27	1,181	0	91,458	34	269,885
2011	92,796	35	77,964	29	1,296	0	94,857	36	266,913
2012	98,854	38	76,599	29	1,378	1	85,245	33	262,076

Table 4. POLE-AND-LINE catches in the WCPFC Statistical Area, by species

YEAR	ALBACORE		BIGEYE		SKIPJACK		YELLOWFIN		TOTAL
	TONNES	%	TONNES	%	TONNES	%	TONNES	%	
1960	0	0	1,500	2	70,428	95	1,872	3	73,800
1961	0	0	1,800	1	127,011	96	3,259	2	132,070
1962	0	0	800	1	152,387	97	4,225	3	157,412
1963	0	0	1,800	2	94,757	96	2,071	2	98,628
1964	0	0	1,143	1	137,106	96	5,074	4	143,323
1965	0	0	1,254	1	129,933	97	3,434	3	134,621
1966	0	0	1,108	1	215,600	98	2,192	1	218,900
1967	0	0	2,803	2	168,846	97	3,125	2	174,774
1968	16,597	9	2,272	1	162,379	88	2,706	1	183,954
1969	32,148	9	1,675	0	315,795	89	5,166	1	354,784
1970	24,485	6	1,589	0	379,074	93	4,606	1	409,754
1971	53,451	14	931	0	333,284	85	5,248	1	392,914
1972	60,691	25	1,762	1	172,827	71	7,465	3	242,745
1973	68,908	21	1,258	0	253,217	77	7,458	2	330,841
1974	73,676	20	1,039	0	289,202	78	6,582	2	370,499
1975	52,257	19	1,334	0	218,271	78	7,801	3	279,663
1976	85,436	22	3,423	1	276,582	72	17,186	4	382,627
1977	32,034	9	3,325	1	294,641	85	15,257	4	345,257
1978	59,977	15	3,337	1	331,401	81	12,767	3	407,482
1979	44,762	13	2,540	1	285,859	83	11,638	3	344,799
1980	46,843	12	2,278	1	333,457	84	13,168	3	395,746
1981	27,426	8	2,596	1	294,292	86	19,270	6	343,584
1982	29,615	10	4,108	1	262,244	85	13,835	4	309,802
1983	21,098	6	4,055	1	299,762	89	13,266	4	338,181
1984	26,015	6	3,465	1	379,474	90	13,558	3	422,512
1985	20,714	7	4,326	1	250,010	85	18,156	6	293,206
1986	16,096	4	2,865	1	336,695	91	13,074	4	368,730
1987	19,091	6	3,134	1	262,467	88	13,243	4	297,935
1988	6,216	2	4,125	1	301,031	93	13,433	4	324,805
1989	8,629	3	4,298	1	289,706	91	15,169	5	317,802
1990	8,777	4	3,918	2	224,592	90	13,103	5	250,390
1991	7,117	2	1,991	1	292,950	93	12,921	4	314,979
1992	13,899	5	1,757	1	251,717	89	15,225	5	282,598
1993	12,871	4	2,331	1	280,066	91	12,698	4	307,966
1994	26,456	10	2,951	1	227,921	84	13,743	5	271,071
1995	21,120	7	3,776	1	257,147	87	15,063	5	297,106
1996	20,302	8	3,864	2	211,408	84	15,479	6	251,053
1997	32,259	12	3,611	1	225,612	82	12,362	5	273,844
1998	22,962	7	7,380	2	256,691	82	26,935	9	313,968
1999	50,507	15	7,212	2	253,244	75	27,869	8	338,832
2000	21,652	7	7,366	2	246,300	82	24,658	8	299,976
2001	29,467	12	5,901	2	187,490	77	20,479	8	243,337
2002	48,472	19	5,952	2	180,618	71	19,743	8	254,785
2003	36,126	14	4,640	2	202,154	77	17,955	7	260,875
2004	32,365	13	7,823	3	192,936	76	20,206	8	253,330
2005	16,162	6	6,851	3	216,643	81	27,007	10	266,663
2006	15,429	6	9,781	4	208,622	81	23,653	9	257,485
2007	37,785	13	7,296	3	212,913	75	26,570	9	284,564
2008	19,072	7	9,202	3	218,325	81	22,705	8	269,304
2009	31,193	12	7,916	3	201,219	76	23,918	9	264,246
2010	19,575	7	7,027	3	223,290	83	20,112	7	270,004
2011	28,562	10	5,540	2	205,869	74	36,794	13	276,765
2012	28,568	13	3,245	1	156,579	70	35,815	16	224,207

Table 5. PURSE SEINE catch estimates in the WCPFC Statistical Area, by species.

(original catches have been adjusted with species compositions determined from observer grab samples corrected for size selectivity bias)

YEAR	ALBACORE		BIGEYE		SKIPJACK		YELLOWFIN		TOTAL
	TONNES	%	TONNES	%	TONNES	%	TONNES	%	
1960	0	0	58	1	3,728	71	1,438	28	5,224
1961	7	0	63	0	11,693	80	2,777	19	14,540
1962	53	0	173	1	11,674	62	6,975	37	18,875
1963	59	0	6	0	9,592	80	2,277	19	11,934
1964	128	0	231	1	25,006	86	3,647	13	29,012
1965	11	0	201	2	4,657	54	3,752	44	8,621
1966	111	1	9	0	10,949	65	5,844	35	16,913
1967	89	1	61	0	10,940	75	3,418	24	14,508
1968	267	2	193	1	7,640	50	7,043	47	15,143
1969	521	5	53	1	5,036	53	3,873	41	9,483
1970	317	2	580	4	7,501	46	7,824	48	16,222
1971	902	4	700	3	13,665	56	9,244	38	24,511
1972	277	1	664	2	18,025	62	10,064	35	29,030
1973	1,353	4	736	2	19,235	53	14,945	41	36,269
1974	161	1	1,129	4	10,852	37	17,406	59	29,548
1975	159	1	1,326	5	13,101	47	13,099	47	27,685
1976	1,109	3	1,650	4	22,422	55	15,589	38	40,770
1977	669	1	1,953	4	34,602	65	16,268	30	53,492
1978	1,115	2	2,481	5	33,169	64	15,275	29	52,040
1979	125	0	2,371	3	58,306	65	29,300	33	90,102
1980	329	0	2,914	3	75,891	67	34,131	30	113,265
1981	252	0	9,322	6	88,888	58	55,444	36	153,906
1982	561	0	13,802	6	158,865	64	76,006	30	249,234
1983	350	0	20,962	5	292,666	67	122,530	28	436,508
1984	3,380	1	22,761	5	303,307	66	127,018	28	456,466
1985	1,533	0	18,327	5	268,112	66	115,280	29	403,252
1986	1,542	0	26,257	6	323,490	70	113,171	24	464,460
1987	1,205	0	30,362	6	339,367	64	160,208	30	531,142
1988	1,208	0	29,982	5	433,086	73	128,334	22	592,610
1989	2,521	0	31,142	5	428,387	66	184,391	29	646,441
1990	1,995	0	35,910	5	524,912	68	210,915	27	773,732
1991	2,652	0	38,290	4	706,684	71	245,525	25	993,151
1992	4,104	0	44,950	5	643,146	67	274,113	28	966,313
1993	2,889	0	34,228	4	585,145	69	223,385	26	845,647
1994	2,026	0	36,835	4	701,847	72	236,941	24	977,649
1995	1,177	0	32,649	3	693,334	74	212,013	23	939,173
1996	581	0	40,964	5	676,011	75	180,350	20	897,906
1997	1,068	0	75,603	8	602,378	61	302,309	31	981,358
1998	1,554	0	74,049	6	848,560	65	373,564	29	1,297,727
1999	6,872	1	63,844	6	756,754	67	303,669	27	1,131,139
2000	2,408	0	50,774	4	780,419	67	334,828	29	1,168,429
2001	974	0	54,070	5	772,891	68	316,507	28	1,144,442
2002	3,303	0	64,789	5	951,308	73	278,073	21	1,297,473
2003	627	0	45,390	4	918,185	71	328,087	25	1,292,289
2004	7,200	1	70,929	5	999,835	72	316,028	23	1,393,992
2005	850	0	60,628	4	1,047,975	71	369,876	25	1,479,329
2006	364	0	61,405	4	1,128,704	75	322,471	21	1,512,944
2007	5,682	0	49,012	3	1,280,989	77	320,763	19	1,656,446
2008	825	0	57,795	3	1,249,751	73	400,980	23	1,709,351
2009	2,077	0	64,151	4	1,401,495	78	317,904	18	1,785,627
2010	330	0	55,750	3	1,299,809	77	341,771	20	1,697,660
2011	321	0	70,737	5	1,163,726	75	309,125	20	1,543,909
2012	321	0	69,164	4	1,348,554	74	398,464	22	1,816,503

Table 6. Catches of target tunas in the WCPFC Statistical Area, by flag

YEAR	AUSTRALIA	BELIZE	CANADA	CHINA	COOK ISLANDS	ECUADOR	EL SALVADOR	FEDERATED STATES OF MICRONESIA
1960	-	-	-	-	-	-	-	-
1961	-	-	-	-	-	-	-	-
1962	-	-	-	-	-	-	-	-
1963	-	-	-	-	-	-	-	-
1964	-	-	-	-	-	-	-	-
1965	-	-	-	-	-	-	-	-
1966	-	-	-	-	-	-	-	-
1967	-	-	-	-	-	-	-	-
1968	-	-	-	-	-	-	-	-
1969	-	-	-	-	-	-	-	-
1970	100	-	-	-	-	-	-	-
1971	100	-	-	-	-	-	-	-
1972	100	-	-	-	-	-	-	-
1973	100	-	-	-	-	-	-	-
1974	100	-	-	-	-	-	-	-
1975	2,000	-	-	-	-	-	-	-
1976	147	-	-	-	-	-	-	-
1977	131	-	-	-	-	-	-	-
1978	375	-	-	-	-	-	-	-
1979	100	-	-	-	-	-	-	-
1980	117	-	-	-	-	-	-	-
1981	357	-	-	-	-	-	-	-
1982	238	-	-	-	-	-	-	-
1983	230	-	-	-	-	-	-	-
1984	147	-	-	-	-	-	-	-
1985	18	-	-	-	-	-	-	-
1986	101	-	-	-	-	-	-	-
1987	1,455	-	-	-	-	-	-	-
1988	1,752	-	235	44	-	-	-	-
1989	2,836	-	235	144	-	-	-	-
1990	6,984	-	235	453	-	-	-	-
1991	9,380	-	235	1,007	-	-	-	11,339
1992	9,524	-	235	2,715	-	-	-	15,472
1993	7,212	-	235	6,419	-	-	-	16,908
1994	5,415	-	235	12,677	32	-	-	20,941
1995	6,288	54	235	10,586	63	-	-	6,759
1996	5,249	129	136	6,026	59	-	-	7,394
1997	7,550	77	149	3,664	-	-	-	8,254
1998	5,153	276	167	3,272	22	-	-	14,179
1999	7,551	211	253	7,515	56	-	-	10,881
2000	6,997	270	351	6,244	335	3,992	-	21,688
2001	5,279	7,143	206	9,947	206	1,057	599	17,646
2002	5,232	3,385	144	15,632	770	427	1,488	20,607
2003	5,809	2,697	-	42,210	2,462	1,562	74	30,829
2004	4,200	943	63	42,606	3,207	3,051	-	28,471
2005	3,093	1,056	72	62,734	3,125	5,193	-	28,302
2006	5,030	632	135	77,382	2,841	9,523	-	10,774
2007	4,404	595	27	73,698	3,266	9,187	6,025	15,440
2008	3,969	225	-	86,451	2,817	25,415	10,962	19,424
2009	3,646	190	-	119,639	2,054	4,428	8,824	21,153
2010	2,566	127	-	83,241	3,058	8,450	6,824	23,802
2011	2,924	220	1	105,275	3,636	18,045	12,226	28,432
2012	2,221	194	-	91,302	3,537	23,145	10,645	37,607

Table 6 continued

YEAR	FIJI ISLANDS	FRENCH POLYNESIA	INDONESIA	JAPAN	KIRIBATI	REPUBLIC OF KOREA	MARSHALL ISLANDS	MEXICO
1960	-	-	7,415	206,606	-	744	-	-
1961	-	-	8,054	269,191	-	385	-	-
1962	-	-	8,749	302,176	-	708	-	-
1963	-	-	9,505	228,717	-	1,955	-	-
1964	-	-	10,327	270,506	-	2,527	-	-
1965	-	-	11,223	232,844	-	7,078	-	-
1966	-	-	12,198	355,838	-	13,405	-	-
1967	-	-	13,260	281,568	-	14,469	-	-
1968	-	-	14,417	273,603	-	10,794	-	-
1969	-	-	15,677	442,850	-	17,077	-	-
1970	-	-	17,600	505,452	-	16,927	-	-
1971	-	-	18,100	471,129	-	16,541	-	-
1972	-	-	28,600	341,854	-	17,678	-	-
1973	-	-	32,500	418,048	-	25,938	-	-
1974	12	-	33,779	429,014	-	14,105	-	-
1975	11	-	34,378	358,037	-	29,343	-	-
1976	742	-	33,375	474,987	-	44,464	-	-
1977	1,711	-	37,235	459,318	-	43,722	-	-
1978	2,524	-	40,024	513,391	-	33,102	-	-
1979	3,494	696	50,973	466,434	-	41,915	-	-
1980	2,496	936	61,796	522,844	1,812	46,096	-	-
1981	5,836	1,001	68,808	460,646	2,376	33,310	-	-
1982	4,428	1,034	74,056	501,943	2,269	39,684	-	-
1983	3,741	836	84,532	554,560	3,406	37,589	-	468
1984	4,572	1,250	96,662	639,034	3,843	33,293	-	6,600
1985	3,946	836	101,904	511,605	2,531	44,293	-	-
1986	3,125	961	111,733	582,323	3,226	63,034	-	-
1987	3,889	878	124,175	504,820	2,246	91,201	-	-
1988	3,891	715	129,921	599,082	3,284	113,653	-	-
1989	5,189	856	145,320	517,619	4,094	139,904	-	-
1990	3,830	2,109	142,237	471,098	2,407	204,399	-	-
1991	5,298	2,335	168,844	490,677	2,036	247,950	-	-
1992	4,790	2,019	194,659	472,795	2,363	213,552	9	-
1993	4,966	2,387	173,969	516,860	2,104	150,165	137	-
1994	5,937	2,804	196,898	473,786	3,131	226,531	48	-
1995	7,009	3,343	204,837	481,106	5,423	206,176	22	-
1996	6,803	3,583	230,450	417,584	6,645	174,948	-	-
1997	4,354	4,564	211,815	507,798	7,020	188,667	-	-
1998	4,013	5,710	308,736	543,367	9,389	247,929	-	-
1999	4,075	5,200	332,835	482,046	9,793	173,490	-	-
2000	9,660	6,833	282,789	498,958	14,726	207,498	7,560	-
2001	11,309	7,733	252,439	439,331	5,400	216,691	35,774	-
2002	11,551	7,347	257,364	451,896	9,830	254,593	38,952	-
2003	10,854	6,309	247,234	469,809	6,898	221,079	37,875	-
2004	17,312	5,496	286,128	441,587	6,661	212,655	46,676	-
2005	15,477	5,089	244,800	481,780	9,165	237,353	56,164	-
2006	15,472	5,938	284,067	445,868	6,723	274,859	42,349	-
2007	10,042	6,408	319,492	473,248	18,020	278,483	59,409	-
2008	13,627	5,673	332,272	432,562	18,373	275,132	33,013	-
2009	16,828	6,878	378,706	399,368	34,004	310,139	43,972	-
2010	12,545	6,250	351,264	425,019	38,947	300,207	57,225	-
2011	11,286	6,028	390,279	365,416	60,003	231,558	90,544	-
2012	14,978	7,560	443,316	341,766	76,010	290,123	72,422	-

Table 6 continued

YEAR	NAURU	NEW CALEDONIA	NEW ZEALAND	NIUE	PALAU	PAPUA NEW GUINEA	PHILIPPINES	PORTUGAL
1960	-	-	-	-	-	-	20,585	-
1961	-	-	-	-	-	-	21,735	-
1962	-	-	-	-	-	-	22,957	-
1963	-	-	-	-	-	-	24,252	-
1964	-	-	-	-	1,166	-	25,626	-
1965	-	-	-	-	2,670	-	27,084	-
1966	-	-	-	-	2,686	-	28,632	-
1967	-	-	5	-	3,406	-	30,275	-
1968	-	-	14	-	5,056	-	32,021	-
1969	-	-	-	-	4,762	-	33,875	-
1970	-	-	50	-	8,082	2,428	52,000	-
1971	-	-	-	-	2,143	16,974	57,200	-
1972	-	-	268	-	1,519	13,130	60,700	-
1973	-	-	484	-	2,350	28,216	70,900	-
1974	-	-	899	-	6,808	41,630	81,188	-
1975	-	-	647	-	6,269	17,369	84,450	-
1976	-	-	25	-	5,323	32,921	73,653	-
1977	-	-	621	-	4,012	24,115	118,149	-
1978	-	-	1,701	-	9,694	48,859	87,319	-
1979	-	-	830	-	5,688	26,857	94,308	-
1980	-	-	1,519	-	6,576	33,994	77,505	-
1981	-	229	2,111	-	9,411	31,412	94,616	-
1982	-	868	2,436	-	4,053	-	104,048	-
1983	-	461	6,565	-	-	-	118,529	-
1984	-	150	7,005	-	-	2,744	105,217	-
1985	-	281	5,713	-	97	9,300	137,308	-
1986	-	367	6,793	-	131	-	145,097	-
1987	-	1,102	5,035	-	161	-	141,461	-
1988	-	1,092	3,923	-	157	-	124,786	-
1989	-	871	10,323	-	77	-	151,124	-
1990	-	1,730	7,120	-	88	-	202,214	-
1991	-	1,536	7,765	-	-	-	221,817	-
1992	-	1,092	4,524	-	213	-	165,652	-
1993	-	1,294	4,415	-	206	8	134,921	-
1994	-	1,355	8,513	-	184	1,381	172,558	-
1995	-	1,274	8,147	-	100	12,700	198,613	-
1996	-	1,201	10,194	-	100	10,572	205,004	-
1997	-	977	10,451	-	107	19,400	208,767	-
1998	-	1,543	15,154	-	100	50,727	235,586	-
1999	-	1,616	10,141	-	100	38,979	226,320	-
2000	11	1,662	18,918	-	240	68,818	234,520	-
2001	13	1,718	17,533	-	62	92,806	210,786	-
2002	7	1,926	38,574	-	4	124,705	226,863	-
2003	20	2,007	30,614	-	20	159,622	264,106	-
2004	3	2,189	33,886	6	35	225,441	271,760	-
2005	-	2,114	27,917	105	-	235,439	274,247	-
2006	-	1,807	27,410	286	-	233,170	291,564	-
2007	-	1,770	38,969	306	-	230,015	320,567	-
2008	3	1,993	33,878	435	-	205,682	360,187	-
2009	4	2,187	30,618	189	-	213,018	328,047	-
2010	4	2,488	26,950	110	-	208,253	285,594	-
2011	4	2,362	25,312	-	-	164,556	192,956	7
2012	4	2,337	21,661	-	-	240,055	233,053	18

Table 6 continued

YEAR	RUSSIA	SAMOA	SENEGAL	SOLOMON ISLANDS	SPAIN	CHINESE TAIPEI	TONGA
1960	-	-	-	-	-	4,035	-
1961	-	-	-	-	-	4,485	-
1962	-	-	-	-	-	4,779	-
1963	-	-	-	-	-	4,642	-
1964	-	-	-	-	-	5,482	-
1965	-	-	-	-	-	7,524	-
1966	-	-	-	-	-	14,812	-
1967	-	-	-	-	-	25,911	-
1968	-	-	-	-	-	35,302	-
1969	-	-	-	-	-	30,096	-
1970	-	-	-	-	-	33,887	-
1971	-	-	-	4,711	-	42,640	-
1972	-	-	-	7,905	-	48,612	-
1973	-	-	-	6,624	-	51,807	-
1974	-	-	-	10,332	-	37,501	-
1975	-	-	-	7,094	-	43,804	-
1976	-	-	-	15,763	-	43,546	-
1977	-	-	-	12,202	-	50,858	-
1978	-	-	-	18,353	-	46,606	-
1979	-	-	-	24,289	-	43,450	-
1980	-	-	-	23,241	-	48,323	-
1981	-	-	-	22,832	-	37,900	-
1982	-	-	-	20,071	-	32,644	205
1983	-	-	-	33,432	-	44,457	208
1984	-	-	-	35,615	-	56,406	218
1985	2,111	-	-	29,997	-	55,987	233
1986	4,175	-	-	42,248	-	65,659	252
1987	8,995	-	-	29,437	-	84,558	299
1988	6,189	-	-	40,513	-	117,865	276
1989	4,935	-	-	34,262	-	135,125	235
1990	2,126	-	-	26,612	-	164,641	192
1991	3,715	-	-	46,888	-	213,007	197
1992	2,126	-	-	30,558	-	263,185	225
1993	8,714	300	-	28,006	-	207,231	329
1994	6,722	736	-	33,925	-	223,590	411
1995	-	2,151	-	49,665	-	228,798	461
1996	-	2,375	-	38,697	-	226,436	579
1997	-	5,498	-	47,441	-	217,025	663
1998	-	6,820	-	48,377	1,624	305,354	833
1999	-	5,790	-	45,662	8,613	251,034	1,084
2000	-	5,389	-	12,929	12,896	279,197	1,161
2001	-	5,864	-	17,218	2,402	284,433	1,733
2002	-	4,927	-	18,537	2,288	317,311	1,672
2003	-	2,944	-	26,364	4,659	256,558	971
2004	-	1,967	-	24,904	5,587	258,172	388
2005	-	1,626	6	20,023	3,452	243,738	629
2006	-	2,564	15	29,462	11,825	254,379	759
2007	-	3,559	6	21,244	23,749	274,963	861
2008	-	2,796	-	17,378	36,358	244,692	592
2009	-	3,422	-	17,883	26,687	239,505	271
2010	-	3,090	-	26,907	29,503	247,623	128
2011	-	1,932	-	40,374	39,468	225,134	224
2012	-	2,353	-	33,476	32,199	243,194	171

Table 6 continued

YEAR	TOKELAU	TUVALU	UNITED STATES OF AMERICA	VANUATU	VIETNAM	WALLIS ET FUTUNA	EASTERN PACIFIC NEI	TOTAL
1960	-	-	708	-	-	-	-	240,093
1961	-	-	626	-	-	-	-	304,476
1962	-	-	669	-	-	-	-	340,038
1963	-	-	549	-	-	-	-	269,620
1964	-	-	516	-	-	-	-	316,150
1965	-	-	501	-	-	-	-	288,924
1966	-	-	513	-	-	-	-	428,084
1967	-	-	446	-	-	-	-	369,340
1968	-	-	367	-	-	-	-	371,574
1969	-	-	439	-	-	-	-	544,776
1970	-	-	493	-	-	-	-	637,019
1971	-	-	437	-	-	-	-	629,975
1972	-	-	419	-	-	-	-	520,785
1973	-	-	307	-	-	-	-	637,274
1974	-	-	347	-	-	-	-	655,715
1975	-	-	310	-	-	-	-	583,712
1976	-	-	1,071	-	-	-	-	726,017
1977	-	-	1,359	-	-	-	672	754,105
1978	-	-	1,477	-	-	-	926	804,351
1979	-	-	11,852	-	-	-	734	771,620
1980	-	-	13,483	-	-	-	114	840,852
1981	-	-	40,496	-	-	-	98	811,439
1982	-	216	75,494	-	-	-	75	863,762
1983	-	337	181,593	-	-	-	2,167	1,073,111
1984	-	540	162,380	-	-	-	10,188	1,165,864
1985	-	4	110,031	-	-	-	1,221	1,017,416
1986	-	390	123,517	-	-	-	-	1,153,132
1987	-	632	145,072	-	-	-	405	1,145,821
1988	-	1,090	122,380	-	-	-	-	1,270,848
1989	-	149	148,339	-	-	-	-	1,301,637
1990	-	90	171,301	-	-	-	-	1,409,866
1991	-	29	225,040	-	-	-	-	1,659,095
1992	-	8	209,243	-	-	-	-	1,594,959
1993	-	-	203,518	-	-	-	-	1,470,304
1994	-	-	215,683	820	-	-	-	1,614,313
1995	-	-	176,125	7,276	-	-	211	1,617,422
1996	-	-	158,219	11,497	-	-	642	1,524,522
1997	-	-	154,149	26,164	-	-	1,776	1,636,330
1998	-	-	184,278	39,423	-	-	2,935	2,034,967
1999	-	-	191,738	46,162	-	-	1,910	1,863,055
2000	-	-	135,410	37,545	33,632	-	2,925	1,913,154
2001	-	-	128,503	11,917	35,400	-	509	1,821,657
2002	8	-	136,190	28,031	37,683	-	244	2,018,188
2003	3	-	101,004	28,443	37,458	-	2,600	2,003,094
2004	3	-	79,395	66,793	50,521	-	2,013	2,122,119
2005	6	19	97,870	88,391	52,409	-	709	2,202,103
2006	6	12	81,164	76,148	52,573	-	709	2,245,446
2007	8	26	103,576	82,758	54,210	-	709	2,435,040
2008	8	22	221,186	47,892	49,903	-	708	2,483,628
2009	12	4,456	292,702	49,567	44,241	-	708	2,603,346
2010	4	10,582	256,977	38,862	41,665	-	709	2,498,974
2011	4	10,069	215,131	34,770	49,584	13	709	2,328,482
2012	229	13,365	272,806	37,516	65,556	-	709	2,613,528

Table 7. Catches of albacore in the Pacific Ocean.

YEAR	SOUTHPACIFIC OCEAN					NORTH PACIFIC OCEAN					TOTAL
	LONGLINE	POLE-AND-LINE	TROLL	OTHER	SUBTOTAL	LONGLINE	POLE-AND-LINE	TROLL	OTHER	SUBTOTAL	
1960	22,248	45	0	0	22,293	17,384	25,156	20,105	769	63,414	85,707
1961	23,742	0	0	0	23,742	17,490	21,476	12,059	1,631	52,656	76,398
1962	35,219	0	0	0	35,219	15,850	9,814	19,753	1,926	47,343	82,562
1963	31,095	16	0	0	31,111	13,639	28,852	25,145	1,438	69,074	100,185
1964	22,824	0	0	0	22,824	15,659	27,269	18,391	1,271	62,590	85,414
1965	25,455	0	0	0	25,455	14,226	41,908	16,557	863	73,554	99,009
1966	38,661	0	0	0	38,661	25,600	24,430	15,377	1,285	66,692	105,353
1967	43,952	0	5	0	43,957	29,821	34,594	17,975	1,316	83,706	127,663
1968	32,368	0	14	0	32,382	25,152	21,503	21,462	2,327	70,444	102,826
1969	24,805	0	0	0	24,805	19,223	34,908	20,192	1,838	76,161	100,966
1970	34,775	100	50	0	34,925	19,229	28,679	21,422	1,656	70,986	105,911
1971	38,530	100	0	0	38,630	14,982	55,028	22,272	2,436	94,718	133,348
1972	39,131	122	268	0	39,521	19,025	64,319	27,521	1,659	112,524	152,045
1973	46,705	141	484	0	47,330	17,030	71,003	17,053	2,006	107,092	154,422
1974	33,039	112	898	0	34,049	14,047	78,341	21,509	1,384	115,281	149,330
1975	22,849	105	646	0	23,600	14,547	55,395	19,043	1,219	90,204	113,804
1976	28,957	100	25	0	29,082	18,510	88,036	16,183	3,217	125,946	155,028
1977	38,019	100	621	0	38,740	17,684	33,431	10,022	2,264	63,401	102,141
1978	32,890	100	1,686	0	34,676	13,851	60,827	16,636	8,064	99,378	134,054
1979	26,162	100	814	0	27,076	14,738	44,965	7,302	4,211	71,216	98,292
1980	30,972	101	1,468	0	32,541	15,635	47,124	7,768	4,707	75,234	107,775
1981	32,694	0	2,085	5	34,784	18,864	28,174	12,837	11,526	71,401	106,185
1982	28,347	1	2,434	6	30,788	18,275	30,039	6,713	13,963	68,990	99,778
1983	24,309	0	744	39	25,092	16,586	21,705	9,584	7,676	55,551	80,643
1984	20,340	2	2,773	1,589	24,704	16,133	27,043	9,354	18,670	71,200	95,904
1985	27,138	0	3,253	1,937	32,328	14,781	22,212	6,471	14,947	58,411	90,739
1986	32,641	0	2,003	1,946	36,590	13,140	16,528	4,738	10,938	45,344	81,934
1987	21,979	9	2,134	930	25,052	15,411	19,240	2,870	11,509	49,030	74,082
1988	28,288	0	4,296	5,283	37,867	15,601	6,814	4,367	18,968	45,750	83,617
1989	18,738	0	8,370	21,968	49,076	14,536	8,683	2,000	19,986	45,205	94,281
1990	21,304	245	6,975	7,538	36,062	16,608	8,647	2,905	26,159	54,319	90,381
1991	26,292	14	7,805	1,489	35,600	18,049	7,103	1,984	10,798	37,934	73,534
1992	32,014	11	6,578	65	38,668	19,991	13,888	4,934	16,580	55,393	94,061
1993	30,998	74	4,296	70	35,438	31,143	12,797	6,748	4,112	54,800	90,238
1994	34,998	67	7,164	89	42,318	30,825	26,389	13,134	3,486	73,834	116,152
1995	30,508	139	7,716	104	38,467	32,948	21,061	10,758	1,725	66,492	104,959
1996	26,763	30	7,410	156	34,359	39,383	20,296	21,849	1,070	82,598	116,957
1997	34,657	21	4,679	133	39,490	48,365	32,311	18,674	2,736	102,086	141,576
1998	43,970	36	6,280	85	50,371	48,050	23,005	20,074	3,237	94,366	144,737
1999	35,955	138	3,447	74	39,614	46,767	50,429	13,853	11,155	122,204	161,818
2000	40,642	102	6,455	139	47,338	41,615	21,619	15,245	4,985	83,464	130,802
2001	52,855	37	5,253	199	58,344	37,744	29,569	16,738	3,002	87,053	145,397
2002	68,411	18	4,661	150	73,240	33,911	48,832	16,323	6,219	105,285	178,525
2003	56,351	12	5,984	130	62,477	33,293	36,173	21,886	3,184	94,536	157,013
2004	57,024	110	4,614	123	61,871	30,175	32,380	22,255	8,977	93,787	155,658
2005	59,897	29	3,503	137	63,566	33,028	16,199	14,067	3,183	66,477	130,043
2006	59,343	29	2,884	188	62,444	34,270	15,423	18,931	1,137	69,761	132,205
2007	56,500	17	2,014	60	58,591	31,771	37,789	18,646	6,438	94,644	153,235
2008	59,093	12	3,502	160	62,767	28,475	19,060	17,901	2,926	68,362	131,129
2009	80,680	21	2,031	211	82,943	28,802	33,481	19,167	2,767	84,217	167,160
2010	86,599	14	2,139	190	88,942	28,375	19,561	19,749	912	68,597	157,539
2011	68,782	30	3,189	233	72,234	36,720	28,532	16,895	889	83,036	155,270
2012	83,818	36	2,925	233	87,012	35,024	28,532	17,077	892	81,525	168,537

Table 8. Catches of bigeye in the Pacific Ocean.

YEAR	WESTERN AND CENTRAL PACIFIC OCEAN					EASTERN PACIFIC OCEAN					TOTAL
	LONGLINE	POLE-AND-LINE	PURSE SEINE	OTHER	SUBTOTAL	LONGLINE	POLE-AND-LINE	PURSE SEINE	OTHER	SUBTOTAL	
1960	43,467	1,500	58	0	45,025	17,722	0	24	0	17,746	62,771
1961	37,517	1,800	63	0	39,380	52,431	106	105	0	52,642	92,022
1962	35,895	800	173	0	36,868	45,050	318	302	0	45,670	82,538
1963	42,540	1,800	6	0	44,346	66,617	140	0	0	66,757	111,103
1964	30,978	1,143	231	28	32,380	46,279	127	0	0	46,406	78,786
1965	29,844	1,254	201	30	31,329	29,164	231	0	0	29,395	60,724
1966	31,949	1,108	9	86	33,152	34,800	292	210	0	35,302	68,454
1967	32,791	2,803	61	253	35,908	35,878	1,305	1,697	0	38,880	74,788
1968	27,199	2,272	193	204	29,868	35,233	115	4,618	0	39,966	69,834
1969	32,371	1,675	53	62	34,161	52,071	0	1,093	0	53,164	87,325
1970	34,348	1,589	746	2,802	39,485	33,341	0	2,411	0	35,752	75,237
1971	36,798	931	886	3,057	41,672	29,804	75	4,359	18	34,256	75,928
1972	49,334	1,762	857	3,497	55,450	36,128	126	3,971	0	40,225	95,675
1973	40,285	1,258	967	4,218	46,728	50,777	236	3,342	0	54,355	101,083
1974	41,787	1,039	1,397	4,719	48,942	36,961	0	1,554	0	38,515	87,457
1975	57,623	1,334	1,600	4,938	65,495	41,733	36	6,574	0	48,343	113,838
1976	68,514	3,423	1,881	4,123	77,941	54,290	75	17,212	7	71,584	149,525
1977	66,249	3,325	2,280	5,627	77,481	74,086	2	11,161	0	85,249	162,730
1978	50,375	3,337	2,581	4,231	60,524	70,659	0	18,539	0	89,198	149,722
1979	57,186	2,540	2,722	4,615	67,063	55,435	0	12,097	1	67,533	134,596
1980	56,553	2,278	3,337	4,142	66,310	64,335	0	21,938	130	86,403	152,713
1981	41,564	2,596	9,702	4,918	58,780	53,416	0	14,921	7	68,344	127,124
1982	45,204	4,108	13,939	4,738	67,989	53,365	42	6,939	3	60,349	128,338
1983	41,412	4,055	21,295	4,987	71,749	60,043	39	4,575	37	64,694	136,443
1984	46,429	3,465	23,183	5,171	78,248	46,394	2	8,861	11	55,268	133,516
1985	51,326	4,326	18,942	6,110	80,704	66,325	2	6,056	15	72,398	153,102
1986	46,741	2,865	26,747	6,459	82,812	102,425	0	2,686	74	105,185	187,997
1987	59,357	3,134	30,651	5,563	98,705	100,121	0	1,177	49	101,347	200,052
1988	49,663	4,125	30,381	6,439	90,608	72,758	5	1,535	15	74,313	164,921
1989	53,173	4,298	31,577	7,137	96,185	70,963	0	2,030	1	72,994	169,179
1990	65,108	3,918	36,323	7,623	112,972	98,871	0	5,921	59	104,851	217,823
1991	47,079	1,991	38,777	8,477	96,324	104,195	31	4,870	25	109,121	205,445
1992	61,925	1,757	45,219	5,551	114,452	84,808	0	7,179	13	92,000	206,452
1993	56,335	2,331	34,383	4,911	97,960	72,498	0	9,657	35	82,190	180,150
1994	66,002	2,951	36,996	7,360	113,309	71,360	0	34,899	806	107,065	220,374
1995	56,345	3,776	32,799	7,958	100,878	58,269	0	45,321	1,369	104,959	205,837
1996	45,909	3,864	41,078	8,750	99,601	46,958	0	61,311	748	109,017	208,618
1997	58,299	3,611	75,904	6,864	144,678	52,580	0	64,272	20	116,872	261,550
1998	72,499	7,380	73,790	7,903	161,572	46,375	0	44,129	628	91,132	252,704
1999	64,956	7,212	63,450	7,970	143,588	36,450	0	51,158	538	88,146	231,734
2000	62,093	7,366	50,972	8,210	128,641	47,605	0	94,640	253	142,498	271,139
2001	63,530	5,901	54,502	7,526	131,459	68,755	0	61,156	19	129,930	261,389
2002	79,881	5,952	64,451	8,298	158,582	74,424	0	57,440	12	131,876	290,458
2003	73,617	4,640	44,486	7,783	130,526	59,776	0	54,174	21	113,971	244,497
2004	85,408	7,823	70,934	7,847	172,012	43,483	0	67,592	194	111,269	283,281
2005	73,822	6,851	60,790	4,376	145,839	41,432	0	67,895	25	109,352	255,191
2006	81,744	9,781	61,418	4,252	157,195	33,802	0	83,837	40	117,679	274,874
2007	80,794	7,296	48,898	4,527	141,515	29,847	0	63,451	44	93,342	234,857
2008	80,029	9,202	57,813	4,222	151,266	26,136	0	75,028	28	101,192	252,458
2009	78,836	7,916	63,921	5,001	155,674	31,282	0	76,800	15	108,097	263,771
2010	67,218	7,027	55,422	3,966	133,633	35,227	0	57,753	1,358	94,338	227,971
2011	73,484	5,540	70,692	4,990	154,706	28,938	0	57,188	1,051	87,177	241,883
2012	71,485	3,245	70,853	12,016	157,599	28,938	0	68,597	1,051	98,586	256,185

Table 9. Catches of skipjack in the Pacific Ocean

YEAR	WESTERN AND CENTRAL PACIFIC OCEAN					EASTERN PACIFIC OCEAN					TOTAL
	LONGLINE	POLE-AND-LINE	PURSE SEINE	OTHER	SUBTOTAL	LONGLINE	POLE-AND-LINE	PURSE SEINE	OTHER	SUBTOTAL	
1960	0	70,428	3,728	15,782	89,938	0	28,929	16,649	481	46,059	135,997
1961	0	127,011	11,693	18,032	156,736	0	28,995	45,706	428	75,129	231,865
1962	4	152,387	11,674	17,559	181,624	0	17,660	58,939	503	77,102	258,726
1963	0	94,757	9,592	18,354	122,703	0	17,138	82,404	2,389	101,931	224,634
1964	5	137,106	25,006	20,801	182,918	0	10,306	51,759	3,609	65,674	248,592
1965	11	129,933	4,657	20,620	155,221	0	19,867	64,056	1,046	84,969	240,190
1966	50	215,600	10,949	22,913	249,512	0	14,083	50,264	1,960	66,307	315,819
1967	101	168,846	10,940	24,930	204,817	0	18,016	104,928	5,038	127,982	332,799
1968	60	162,379	7,640	24,929	195,008	0	7,340	59,642	10,128	77,110	272,118
1969	124	315,795	5,036	30,070	351,025	0	6,970	46,020	11,904	64,894	415,919
1970	1,260	379,074	10,552	32,164	423,050	0	7,470	47,466	7,234	62,170	485,220
1971	1,440	333,284	16,930	29,164	380,818	0	11,679	94,502	6,702	112,883	493,701
1972	1,524	172,827	21,610	41,783	237,744	0	6,556	29,804	1,144	37,504	275,248
1973	1,838	253,217	23,263	50,407	328,725	0	9,135	39,247	638	49,020	377,745
1974	2,088	289,202	15,346	49,528	356,164	0	7,629	79,418	510	87,557	443,721
1975	1,893	218,271	17,931	50,189	288,284	0	13,848	120,358	526	134,732	423,016
1976	2,056	276,582	27,313	51,216	357,167	0	11,256	124,957	705	136,918	494,085
1977	3,107	294,641	39,367	66,475	403,590	0	7,522	84,603	1,960	94,085	497,675
1978	3,219	331,401	40,754	73,644	449,018	0	6,047	172,294	1,324	179,665	628,683
1979	2,175	285,859	64,008	60,440	412,482	0	6,346	133,695	1,462	141,503	553,985
1980	630	333,457	79,242	42,819	456,148	0	5,225	130,912	1,965	138,102	594,250
1981	754	294,292	93,571	48,226	436,843	0	5,906	119,165	930	126,001	562,844
1982	1,013	262,244	162,946	53,084	479,287	0	3,760	100,499	410	104,669	583,956
1983	2,143	299,762	296,876	56,879	655,660	0	4,387	56,851	737	61,975	717,635
1984	867	379,474	311,845	44,278	736,464	0	2,884	59,859	868	63,611	800,075
1985	1,100	250,010	282,415	43,557	577,082	0	946	50,829	227	52,002	629,084
1986	1,434	336,695	341,833	49,135	729,097	0	1,921	65,634	190	67,745	796,842
1987	2,320	262,467	351,240	47,828	663,855	0	2,233	64,019	214	66,466	730,321
1988	1,930	301,031	442,092	49,141	794,194	0	4,325	87,113	689	92,127	886,321
1989	2,502	289,706	438,796	48,475	779,479	0	2,940	94,934	1,047	98,921	878,400
1990	358	224,592	543,957	73,185	842,092	0	823	74,369	1,915	77,107	919,199
1991	882	292,950	721,296	69,061	1,084,189	0	1,717	62,228	1,945	65,890	1,150,079
1992	431	251,717	661,867	62,898	976,913	0	1,957	84,283	1,054	87,294	1,064,207
1993	569	280,066	604,371	47,383	932,389	0	3,772	83,830	2,317	89,919	1,022,308
1994	353	227,921	710,121	58,859	997,254	0	3,240	70,126	804	74,170	1,071,424
1995	572	257,147	703,544	69,681	1,030,944	0	5,253	127,047	1,988	134,288	1,165,232
1996	3,874	211,408	686,227	68,696	970,205	0	2,555	103,973	1,313	107,841	1,078,046
1997	3,932	225,612	610,981	69,750	910,275	0	3,260	153,456	231	156,947	1,067,222
1998	4,904	256,691	857,474	76,239	1,195,308	0	1,684	140,631	531	142,846	1,338,154
1999	4,064	253,244	768,329	74,714	1,100,351	0	2,044	261,565	1,594	265,203	1,365,554
2000	4,516	246,300	790,437	101,194	1,142,447	68	231	204,307	67	204,673	1,347,120
2001	5,036	187,490	782,401	83,115	1,058,042	1,214	448	143,561	34	145,257	1,203,299
2002	3,376	180,618	961,873	85,266	1,231,133	261	616	153,303	119	154,299	1,385,432
2003	3,694	202,154	928,842	81,778	1,216,468	634	638	274,529	2,777	278,578	1,495,046
2004	3,841	192,936	1,013,101	90,573	1,300,451	713	528	198,664	1,105	201,010	1,501,461
2005	1,045	216,643	1,059,826	117,105	1,394,619	231	1,300	263,229	1,780	266,540	1,661,159
2006	1,470	208,111	1,138,996	127,163	1,475,740	224	435	296,269	986	297,914	1,773,654
2007	1,132	212,623	1,294,625	146,739	1,655,119	107	276	208,296	1,065	209,744	1,864,863
2008	795	217,825	1,266,391	153,687	1,638,698	56	501	296,603	1,163	298,323	1,937,021
2009	1,154	200,588	1,427,400	141,139	1,770,281	184	151	230,527	1,112	231,974	2,002,255
2010	1,150	222,829	1,318,086	133,643	1,675,708	121	47	147,192	1,291	148,651	1,824,359
2011	1,291	205,568	1,179,557	128,296	1,514,712	87	4	280,401	180	280,672	1,795,384
2012	1,753	155,975	1,372,924	133,901	1,664,553	87	144	271,114	180	271,525	1,936,078

Table 10. Catches of yellowfin in the Pacific Ocean

YEAR	WESTERN AND CENTRAL PACIFIC OCEAN					EASTERN PACIFIC OCEAN					TOTAL
	LONGLINE	POLE-AND-LINE	PURSE SEINE	OTHER	SUBTOTAL	LONGLINE	POLE-AND-LINE	PURSE SEINE	OTHER	SUBTOTAL	
1960	55,020	1,872	1,438	15,337	73,667	5,934	22,151	79,425	458	107,968	181,635
1961	53,166	3,259	2,777	16,236	75,438	12,500	15,220	80,058	949	108,727	184,165
1962	55,547	4,225	6,975	17,197	83,944	10,211	11,052	56,271	706	78,240	162,184
1963	53,185	2,071	2,277	18,223	75,756	18,973	7,041	48,004	688	74,706	150,462
1964	45,241	5,074	3,647	20,186	74,148	16,975	3,989	78,318	738	100,020	174,168
1965	45,487	3,434	3,752	20,956	73,629	15,620	6,983	65,348	312	88,263	161,892
1966	61,623	2,192	5,844	23,409	93,068	9,097	5,302	68,982	507	83,888	176,956
1967	35,720	3,125	3,418	26,303	68,566	9,285	4,512	65,442	1,534	80,773	149,339
1968	45,572	2,706	7,043	26,085	81,406	14,986	4,307	86,542	3,241	109,076	190,482
1969	51,372	5,166	3,873	26,612	87,023	15,329	7,195	113,665	1,866	138,055	225,078
1970	55,481	4,606	9,335	29,422	98,844	12,643	4,260	139,385	4,850	161,138	259,982
1971	56,927	5,248	10,934	31,204	104,313	8,013	5,300	104,863	2,482	120,658	224,971
1972	60,251	7,465	11,821	35,749	115,286	16,859	6,060	164,297	1,060	188,276	303,562
1973	61,818	7,458	17,047	41,726	128,049	11,697	3,933	194,200	661	210,491	338,540
1974	57,490	6,582	19,850	46,997	130,919	7,190	8,188	191,626	1,230	208,234	339,153
1975	68,416	7,801	15,592	48,536	140,345	10,640	5,629	183,028	567	199,864	340,209
1976	76,363	17,186	17,689	40,666	151,904	15,632	3,280	215,108	358	234,378	386,282
1977	92,680	15,257	19,246	55,092	182,275	12,355	1,841	184,922	248	199,366	381,641
1978	108,555	12,767	16,185	38,491	175,998	10,188	3,888	158,801	1,103	173,980	349,978
1979	105,065	11,638	32,490	46,375	195,568	11,473	4,789	170,650	212	187,124	382,692
1980	120,373	13,168	37,983	43,906	215,430	13,477	1,481	143,042	862	158,862	374,292
1981	93,125	19,270	58,903	50,622	221,920	7,999	1,477	168,234	800	178,510	400,430
1982	84,014	13,835	77,257	48,226	223,332	10,961	1,538	114,755	280	127,534	350,866
1983	83,662	13,266	125,558	50,844	273,330	10,895	4,007	83,929	849	99,680	373,010
1984	70,258	13,558	130,857	53,698	268,371	10,345	2,991	135,785	344	149,465	417,836
1985	73,966	18,156	120,875	61,091	274,088	13,198	1,070	211,459	212	225,939	500,027
1986	62,614	13,074	117,632	64,673	257,993	22,808	2,537	260,512	214	286,071	544,064
1987	74,092	13,243	162,835	58,032	308,202	18,911	5,107	262,008	138	286,164	594,366
1988	84,802	13,433	131,967	65,704	295,906	14,660	3,723	277,293	752	296,428	592,334
1989	65,523	15,169	188,348	69,867	338,907	17,032	4,145	277,996	263	299,436	638,343
1990	69,493	13,103	214,675	79,196	376,467	34,633	2,676	263,253	960	301,522	677,989
1991	54,278	12,921	249,956	85,997	403,152	30,899	2,856	231,257	958	265,970	669,122
1992	69,198	15,225	276,560	52,899	413,882	18,646	3,789	228,121	1,958	252,514	666,396
1993	63,564	12,698	224,791	50,503	351,556	24,009	4,951	219,492	3,034	251,486	603,042
1994	69,474	13,743	238,405	69,486	391,108	30,026	3,625	208,408	1,487	243,546	634,654
1995	77,311	15,063	213,114	75,935	381,423	20,596	1,268	215,434	2,066	239,364	620,787
1996	74,049	15,479	181,496	80,738	351,762	16,608	3,762	238,607	1,639	260,616	612,378
1997	68,085	12,362	305,295	72,242	457,984	22,163	4,418	244,878	600	272,059	730,043
1998	62,503	26,935	376,409	84,452	550,299	15,336	5,085	253,959	1,529	275,909	826,208
1999	56,161	27,869	305,830	89,230	479,090	11,682	1,783	281,920	2,706	298,091	777,181
2000	73,601	24,658	338,236	87,461	523,956	23,855	2,431	255,231	1,109	282,626	806,582
2001	75,009	20,479	319,232	78,251	492,971	29,608	3,916	382,702	520	416,746	909,717
2002	79,282	19,743	279,613	85,222	463,860	25,531	950	412,507	549	439,537	903,397
2003	82,927	17,955	331,467	85,013	517,362	25,174	470	381,107	1,145	407,896	925,258
2004	86,422	20,206	321,028	85,544	513,200	18,779	1,884	269,597	627	290,887	804,087
2005	81,859	27,007	375,833	60,692	545,391	12,118	1,821	268,102	1,852	283,893	829,284
2006	78,500	23,544	328,219	62,998	493,261	9,316	686	166,629	1,458	178,089	671,350
2007	77,168	26,460	326,664	69,925	500,217	7,779	894	170,016	1,439	180,128	680,345
2008	80,020	22,639	409,254	68,328	580,241	8,371	812	185,057	941	195,181	775,422
2009	94,376	23,859	324,339	86,887	529,461	8,479	709	236,771	995	246,954	776,415
2010	89,731	20,077	344,476	87,690	541,974	6,645	460	251,008	1,011	259,124	801,098
2011	93,876	36,728	313,161	74,592	518,357	5,503	460	201,692	476	208,131	726,488
2012	83,623	35,733	399,563	130,058	648,977	5,503	386	189,838	476	196,203	845,180

Table 11. Catches of albacore, bigeye, skipjack and yellowfin in the WCPO

YEAR	ALBACORE		BIGEYE		SKIPJACK		YELLOWFIN		TOTAL
	TONNES	%	TONNES	%	TONNES	%	TONNES	%	
1960	31,463	13	45,025	19	89,938	37	73,667	31	240,093
1961	32,922	11	39,380	13	156,736	51	75,438	25	304,476
1962	37,602	11	36,868	11	181,624	53	83,944	25	340,038
1963	26,815	10	44,346	16	122,703	46	75,756	28	269,620
1964	26,652	8	32,380	10	182,918	58	74,148	23	316,098
1965	28,724	10	31,329	11	155,221	54	73,629	25	288,903
1966	52,180	12	33,152	8	249,512	58	93,068	22	427,912
1967	55,403	15	35,908	10	204,817	56	68,566	19	364,694
1968	61,379	17	29,868	8	195,008	53	81,406	22	367,661
1969	71,137	13	34,161	6	351,025	65	87,023	16	543,346
1970	71,496	11	39,485	6	423,050	67	98,844	16	632,875
1971	96,125	15	41,672	7	380,818	61	104,313	17	622,928
1972	106,697	21	55,450	11	237,744	46	115,286	22	515,177
1973	129,538	20	46,728	7	328,725	52	128,049	20	633,040
1974	112,827	17	48,942	8	356,164	55	130,919	20	648,852
1975	83,864	15	65,495	11	288,284	50	140,345	24	577,988
1976	131,620	18	77,941	11	357,167	50	151,904	21	718,632
1977	79,436	11	77,481	10	403,590	54	182,275	25	742,782
1978	105,771	13	60,524	8	449,018	57	175,998	22	791,311
1979	84,878	11	67,063	9	412,482	54	195,568	26	759,991
1980	94,123	11	66,310	8	456,148	55	215,430	26	832,011
1981	86,385	11	58,780	7	436,843	54	221,920	28	803,928
1982	86,847	10	67,989	8	479,287	56	223,332	26	857,455
1983	64,112	6	71,749	7	655,660	62	273,330	26	1,064,851
1984	73,452	6	78,248	7	736,464	64	268,371	23	1,156,535
1985	76,034	8	80,704	8	577,082	57	274,088	27	1,007,908
1986	71,045	6	82,812	7	729,097	64	257,993	23	1,140,947
1987	60,625	5	98,705	9	663,855	59	308,202	27	1,131,387
1988	62,279	5	90,608	7	794,194	64	295,906	24	1,242,987
1989	69,949	5	96,185	7	779,479	61	338,907	26	1,284,520
1990	60,990	4	112,972	8	842,092	60	376,467	27	1,392,521
1991	56,449	3	96,324	6	1,084,189	66	403,152	25	1,640,114
1992	62,483	4	114,452	7	976,913	62	413,882	26	1,567,730
1993	71,723	5	97,960	7	932,389	64	351,556	24	1,453,628
1994	91,696	6	113,309	7	997,254	63	391,108	25	1,593,367
1995	89,851	6	100,878	6	1,030,944	64	381,423	24	1,603,096
1996	88,874	6	99,601	7	970,205	64	351,762	23	1,510,442
1997	109,798	7	144,678	9	910,275	56	457,984	28	1,622,735
1998	107,373	5	161,572	8	1,195,308	59	550,299	27	2,014,552
1999	127,428	7	143,588	8	1,100,351	59	479,090	26	1,850,457
2000	96,302	5	128,641	7	1,142,447	60	523,956	28	1,891,346
2001	114,463	6	131,459	7	1,058,042	59	492,971	27	1,796,935
2002	140,122	7	158,582	8	1,231,133	62	463,860	23	1,993,697
2003	111,738	6	130,526	7	1,216,468	62	517,362	26	1,976,094
2004	114,579	5	172,012	8	1,300,451	62	513,200	24	2,100,242
2005	99,975	5	145,839	7	1,394,619	64	545,391	25	2,185,824
2006	98,520	4	157,195	7	1,475,740	66	493,261	22	2,224,716
2007	121,678	5	141,515	6	1,655,119	68	500,217	21	2,418,529
2008	99,583	4	151,266	6	1,638,698	66	580,241	23	2,469,788
2009	129,335	5	155,674	6	1,770,281	68	529,461	20	2,584,751
2010	119,455	5	133,633	5	1,675,708	68	541,974	22	2,470,770
2011	121,119	5	154,706	7	1,514,712	66	518,357	22	2,308,894
2012	127,329	5	157,599	6	1,664,553	64	648,977	25	2,598,458

Table 12. Catches of albacore, bigeye, skipjack and yellowfin in the EPO

YEAR	ALBACORE		BIGEYE		SKIPJACK		YELLOWFIN		TOTAL
	TONNES	%	TONNES	%	TONNES	%	TONNES	%	
1960	23,292	12	17,746	9	46,059	24	107,968	55	195,065
1961	15,862	6	52,642	21	75,129	30	108,727	43	252,360
1962	22,659	10	45,670	20	77,102	34	78,240	35	223,671
1963	29,799	11	66,757	24	101,931	37	74,706	27	273,193
1964	22,586	10	46,406	20	65,674	28	100,020	43	234,686
1965	17,939	8	29,395	13	84,969	39	88,263	40	220,566
1966	17,938	9	35,302	17	66,307	33	83,888	41	203,435
1967	22,524	8	38,880	14	127,982	47	80,773	30	270,159
1968	26,249	10	39,966	16	77,110	31	109,076	43	252,401
1969	22,646	8	53,164	19	64,894	23	138,055	50	278,759
1970	26,809	9	35,752	13	62,170	22	161,138	56	285,869
1971	24,517	8	34,256	12	112,883	39	120,658	41	292,314
1972	29,548	10	40,225	14	37,504	13	188,276	64	295,553
1973	18,763	6	54,355	16	49,020	15	210,491	63	332,629
1974	25,257	7	38,515	11	87,557	24	208,234	58	359,563
1975	23,051	6	48,343	12	134,732	33	199,864	49	405,990
1976	20,577	4	71,584	15	136,918	30	234,378	51	463,457
1977	24,024	6	85,249	21	94,085	23	199,366	50	402,724
1978	31,108	7	89,198	19	179,665	38	173,980	37	473,951
1979	10,953	3	67,533	17	141,503	35	187,124	46	407,113
1980	11,569	3	86,403	22	138,102	35	158,862	40	394,936
1981	20,283	5	68,344	17	126,001	32	178,510	45	393,138
1982	12,522	4	60,349	20	104,669	34	127,534	42	305,074
1983	15,729	6	64,694	27	61,975	26	99,680	41	242,078
1984	21,857	8	55,268	19	63,611	22	149,465	52	290,201
1985	14,841	4	72,398	20	52,002	14	225,939	62	365,180
1986	11,284	2	105,185	22	67,745	14	286,071	61	470,285
1987	12,977	3	101,347	22	66,466	14	286,164	61	466,954
1988	15,771	3	74,313	16	92,127	19	296,428	62	478,639
1989	9,501	2	72,994	15	98,921	21	299,436	62	480,852
1990	10,850	2	104,851	21	77,107	16	301,522	61	494,330
1991	11,481	3	109,121	24	65,890	15	265,970	59	452,462
1992	23,075	5	92,000	20	87,294	19	252,514	56	454,883
1993	15,605	4	82,190	19	89,919	20	251,486	57	439,200
1994	20,618	5	107,065	24	74,170	17	243,546	55	445,399
1995	14,075	3	104,959	21	134,288	27	239,364	49	492,686
1996	16,112	3	109,017	22	107,841	22	260,616	53	493,586
1997	17,279	3	116,872	21	156,947	28	272,059	48	563,157
1998	25,913	5	91,132	17	142,846	27	275,909	51	535,800
1999	26,464	4	88,146	13	265,203	39	298,091	44	677,904
2000	23,275	4	142,498	22	204,673	31	282,626	43	653,072
2001	33,336	5	129,930	18	145,257	20	416,746	57	725,269
2002	30,154	4	131,876	17	154,299	20	439,537	58	755,866
2003	45,538	5	113,971	13	278,578	33	407,896	48	845,983
2004	40,834	6	111,269	17	201,010	31	290,887	45	644,000
2005	27,203	4	109,352	16	266,540	39	283,893	41	686,988
2006	32,992	5	117,679	19	297,914	48	178,089	28	626,674
2007	31,128	6	93,342	18	209,744	41	180,128	35	514,342
2008	26,627	4	101,192	16	298,323	48	195,181	31	621,323
2009	31,619	5	108,097	17	231,974	37	246,954	40	618,644
2010	34,032	6	94,338	18	148,651	28	259,124	48	536,145
2011	34,851	6	87,177	14	280,672	46	208,131	34	610,831
2012	34,851	6	98,586	16	271,525	45	196,203	33	601,165

Table 13. Catches of albacore, bigeye, skipjack and yellowfin in the Pacific Ocean

YEAR	ALBACORE		BIGEYE		SKIPJACK		YELLOWFIN		TOTAL
	TONNES	%	TONNES	%	TONNES	%	TONNES	%	
1960	85,707	18	62,771	13	135,997	29	181,635	39	466,110
1961	76,398	13	92,022	16	231,865	40	184,165	32	584,450
1962	82,562	14	82,538	14	258,726	44	162,184	28	586,010
1963	100,185	17	111,103	19	224,634	38	150,462	26	586,384
1964	85,414	15	78,786	13	248,592	42	174,168	30	586,960
1965	99,009	18	60,724	11	240,190	43	161,892	29	561,815
1966	105,353	16	68,454	10	315,819	47	176,956	27	666,582
1967	127,663	19	74,788	11	332,799	49	149,339	22	684,589
1968	102,826	16	69,834	11	272,118	43	190,482	30	635,260
1969	100,966	12	87,325	11	415,919	50	225,078	27	829,288
1970	105,911	11	75,237	8	485,220	52	259,982	28	926,350
1971	133,348	14	75,928	8	493,701	53	224,971	24	927,948
1972	152,045	18	95,675	12	275,248	33	303,562	37	826,530
1973	154,422	16	101,083	10	377,745	39	338,540	35	971,790
1974	149,330	15	87,457	9	443,721	44	339,153	33	1,019,661
1975	113,804	11	113,838	11	423,016	43	340,209	34	990,867
1976	155,028	13	149,525	13	494,085	42	386,282	33	1,184,920
1977	102,141	9	162,730	14	497,675	43	381,641	33	1,144,187
1978	134,054	11	149,722	12	628,683	50	349,978	28	1,262,437
1979	98,292	8	134,596	12	553,985	47	382,692	33	1,169,565
1980	107,775	9	152,713	12	594,250	48	374,292	30	1,229,030
1981	106,185	9	127,124	11	562,844	47	400,430	33	1,196,583
1982	99,778	9	128,338	11	583,956	50	350,866	30	1,162,938
1983	80,643	6	136,443	10	717,635	55	373,010	29	1,307,731
1984	95,904	7	133,516	9	800,075	55	417,836	29	1,447,331
1985	90,739	7	153,102	11	629,084	46	500,027	36	1,372,952
1986	81,934	5	187,997	12	796,842	49	544,064	34	1,610,837
1987	74,082	5	200,052	13	730,321	46	594,366	37	1,598,821
1988	83,617	5	164,921	10	886,321	51	592,334	34	1,727,193
1989	94,281	5	169,179	10	878,400	49	638,343	36	1,780,203
1990	90,381	5	217,823	11	919,199	48	677,989	36	1,905,392
1991	73,534	4	205,445	10	1,150,079	55	669,122	32	2,098,180
1992	94,061	5	206,452	10	1,064,207	52	666,396	33	2,031,116
1993	90,238	5	180,150	10	1,022,308	54	603,042	32	1,895,738
1994	116,152	6	220,374	11	1,071,424	52	634,654	31	2,042,604
1995	104,959	5	205,837	10	1,165,232	56	620,787	30	2,096,815
1996	116,957	6	208,618	10	1,078,046	53	612,378	30	2,015,999
1997	141,576	6	261,550	12	1,067,222	49	730,043	33	2,200,391
1998	144,737	6	252,704	10	1,338,154	52	826,208	32	2,561,803
1999	161,818	6	231,734	9	1,365,554	54	777,181	31	2,536,287
2000	130,802	5	271,139	11	1,347,120	53	806,582	32	2,555,643
2001	145,397	6	261,389	10	1,203,299	48	909,717	36	2,519,802
2002	178,525	6	290,458	11	1,385,432	50	903,397	33	2,757,812
2003	157,013	6	244,497	9	1,495,046	53	925,258	33	2,821,814
2004	155,658	6	283,281	10	1,501,461	55	804,087	29	2,744,487
2005	130,043	5	255,191	9	1,661,159	58	829,284	29	2,875,677
2006	132,205	5	274,874	10	1,773,654	62	671,350	24	2,852,083
2007	153,235	5	234,857	8	1,864,863	64	680,345	23	2,933,300
2008	131,129	4	252,458	8	1,937,021	63	775,422	25	3,096,030
2009	167,160	5	263,771	8	2,002,255	62	776,415	24	3,209,601
2010	157,539	5	227,971	8	1,824,359	61	801,098	27	3,010,967
2011	155,270	5	241,883	8	1,795,384	62	726,488	25	2,919,025
2012	168,537	5	256,185	8	1,936,078	60	845,180	26	3,205,980

Table 14. Global catches of albacore, bigeye, skipjack and yellowfin

YEAR	ALBACORE		BIGEYE		SKIPJACK		YELLOWFIN		TOTAL
	TONNES	%	TONNES	%	TONNES	%	TONNES	%	
1960	161,181	23	88,048	13	155,782	22	293,249	42	698,260
1961	146,524	18	124,098	15	253,353	31	284,369	35	808,344
1962	179,312	21	124,222	14	286,687	33	274,099	32	864,320
1963	192,066	22	150,516	18	263,950	31	248,781	29	855,313
1964	195,404	22	120,296	14	287,607	33	277,314	31	880,621
1965	203,023	23	119,244	14	290,750	33	265,353	30	878,370
1966	195,951	20	117,633	12	370,217	38	291,029	30	974,830
1967	225,080	23	124,652	13	391,386	39	254,044	26	995,162
1968	192,556	19	130,908	13	354,667	34	362,084	35	1,040,215
1969	197,162	16	153,306	13	481,746	40	383,854	32	1,216,068
1970	189,341	15	143,025	11	578,370	45	374,816	29	1,285,552
1971	227,988	17	152,633	11	613,821	46	340,147	25	1,334,589
1972	246,734	20	161,249	13	388,976	31	440,199	36	1,237,158
1973	251,592	18	173,982	12	505,534	36	472,824	34	1,403,932
1974	248,620	16	178,193	12	615,086	40	486,928	32	1,528,827
1975	184,759	13	211,283	15	518,521	36	506,146	36	1,420,709
1976	247,134	15	222,708	14	614,231	37	554,502	34	1,638,575
1977	190,096	11	252,197	15	649,391	39	578,110	35	1,669,794
1978	225,434	13	251,867	14	778,942	43	541,943	30	1,798,186
1979	190,713	11	214,079	13	692,270	42	562,164	34	1,659,226
1980	183,350	10	250,816	14	760,735	44	552,207	32	1,747,108
1981	180,719	10	229,568	13	750,123	42	605,178	34	1,765,588
1982	197,808	11	245,088	13	798,200	44	575,271	32	1,816,367
1983	167,689	9	245,566	13	925,893	48	605,343	31	1,944,491
1984	172,703	8	248,130	12	1,041,219	50	640,094	30	2,102,146
1985	177,401	8	283,539	13	889,701	42	781,976	37	2,132,617
1986	203,418	8	310,613	13	1,070,263	44	837,370	35	2,421,664
1987	187,782	8	320,905	13	1,018,901	42	902,617	37	2,430,205
1988	180,209	7	304,918	11	1,232,218	46	944,049	35	2,661,394
1989	178,283	6	316,661	12	1,244,977	45	1,006,552	37	2,746,473
1990	192,512	6	376,183	13	1,293,494	43	1,113,253	37	2,975,442
1991	158,961	5	378,721	12	1,616,194	50	1,070,316	33	3,224,192
1992	185,530	6	377,595	12	1,520,762	47	1,146,895	35	3,230,782
1993	182,261	6	393,653	12	1,540,478	47	1,157,966	35	3,274,358
1994	212,420	6	463,107	14	1,598,434	47	1,133,475	33	3,407,436
1995	195,581	6	451,482	13	1,665,957	49	1,107,827	32	3,420,847
1996	207,498	6	458,080	14	1,548,322	47	1,109,285	33	3,323,185
1997	228,715	7	518,942	15	1,552,755	44	1,208,436	34	3,508,848
1998	241,655	6	505,062	13	1,830,437	47	1,285,562	33	3,862,716
1999	266,537	7	511,174	13	1,958,253	49	1,273,661	32	4,009,625
2000	239,696	6	504,360	13	1,923,786	49	1,275,424	32	3,943,266
2001	259,038	7	476,003	12	1,791,319	46	1,391,413	36	3,917,773
2002	273,295	7	508,285	12	1,990,049	48	1,384,484	33	4,156,113
2003	244,815	6	465,821	11	2,119,985	49	1,493,306	35	4,323,927
2004	240,224	6	508,868	12	2,123,617	49	1,439,700	33	4,312,409
2005	219,244	5	450,296	10	2,363,169	53	1,429,325	32	4,462,034
2006	229,394	5	461,496	10	2,526,360	57	1,185,608	27	4,402,858
2007	244,938	6	437,600	10	2,460,606	58	1,090,980	26	4,234,124
2008	217,849	5	429,770	10	2,522,182	58	1,201,613	27	4,371,414
2009	248,113	6	453,839	10	2,590,346	58	1,158,247	26	4,450,545
2010	241,077	6	384,530	9	2,426,883	57	1,198,490	28	4,250,980
2011	242,944	6	408,035	10	2,397,576	58	1,121,095	27	4,169,650
2012	256,211	6	422,337	9	2,538,270	57	1,239,787	28	4,456,605

Table 15. Catches of albacore, bigeye, skipjack and yellowfin by ocean area. Estimates for the Atlantic Ocean and Indian Ocean for 2011 have been carried over from 2012, respectively.

YEAR	WCPO		EPO		ATLANTIC		INDIAN		TOTAL
	TONNES	%	TONNES	%	TONNES	%	TONNES	%	
1960	240,093	34	226,017	32	145,384	21	86,766	12	698,260
1961	304,476	38	279,974	35	135,230	17	88,664	11	808,344
1962	340,038	39	245,972	28	169,697	20	108,613	13	864,320
1963	269,620	32	316,764	37	188,394	22	80,535	9	855,313
1964	316,098	36	270,862	31	201,987	23	91,674	10	880,621
1965	288,903	33	272,912	31	222,199	25	94,356	11	878,370
1966	427,912	44	238,670	24	181,817	19	126,431	13	974,830
1967	364,694	37	319,895	32	184,929	19	125,644	13	995,162
1968	367,661	35	267,599	26	228,017	22	176,938	17	1,040,215
1969	543,346	45	285,942	24	236,694	19	150,086	12	1,216,068
1970	632,875	49	293,475	23	237,191	18	122,011	9	1,285,552
1971	622,928	47	305,020	23	290,958	22	115,683	9	1,334,589
1972	515,177	42	311,353	25	301,937	24	108,691	9	1,237,158
1973	633,040	45	338,750	24	304,880	22	127,262	9	1,403,932
1974	648,852	42	370,809	24	358,304	23	150,862	10	1,528,827
1975	577,988	41	412,879	29	302,119	21	127,723	9	1,420,709
1976	718,632	44	466,288	28	316,778	19	136,877	8	1,638,575
1977	742,782	44	401,405	24	372,569	22	153,038	9	1,669,794
1978	791,311	44	471,126	26	368,658	21	167,091	9	1,798,186
1979	759,991	46	409,574	25	338,014	20	151,647	9	1,659,226
1980	832,011	48	397,019	23	367,602	21	150,476	9	1,747,108
1981	803,928	46	392,655	22	416,733	24	152,272	9	1,765,588
1982	857,455	47	305,483	17	469,190	26	184,239	10	1,816,367
1983	1,064,851	55	242,880	12	430,504	22	206,256	11	1,944,491
1984	1,156,535	55	290,796	14	372,368	18	282,447	13	2,102,146
1985	1,007,908	47	365,044	17	429,982	20	329,683	15	2,132,617
1986	1,140,947	47	469,890	19	423,538	17	387,289	16	2,421,664
1987	1,131,387	47	467,434	19	403,643	17	427,741	18	2,430,205
1988	1,242,987	47	484,206	18	414,430	16	519,771	20	2,661,394
1989	1,284,520	47	495,683	18	424,384	15	541,886	20	2,746,473
1990	1,392,521	47	512,871	17	489,460	16	580,590	20	2,975,442
1991	1,640,114	51	458,066	14	539,051	17	586,961	18	3,224,192
1992	1,567,730	49	463,386	14	503,396	16	696,270	22	3,230,782
1993	1,453,628	44	442,110	14	554,088	17	824,532	25	3,274,358
1994	1,593,367	47	449,237	13	562,096	16	802,736	24	3,407,436
1995	1,603,096	47	493,719	14	514,855	15	809,177	24	3,420,847
1996	1,510,442	45	505,557	15	489,079	15	818,107	25	3,323,185
1997	1,622,735	46	577,656	16	452,083	13	856,374	24	3,508,848
1998	2,014,552	52	547,251	14	469,574	12	831,339	22	3,862,716
1999	1,850,457	46	685,830	17	502,204	13	971,134	24	4,009,625
2000	1,891,346	48	664,297	17	459,662	12	927,961	24	3,943,266
2001	1,796,935	46	722,867	18	484,624	12	913,347	23	3,917,773
2002	1,993,697	48	764,115	18	394,379	9	1,003,922	24	4,156,113
2003	1,976,094	46	845,720	20	424,528	10	1,077,585	25	4,323,927
2004	2,100,242	49	644,245	15	419,111	10	1,148,811	27	4,312,409
2005	2,185,824	49	689,853	15	399,550	9	1,186,807	27	4,462,034
2006	2,224,716	51	627,367	14	381,814	9	1,168,961	27	4,402,858
2007	2,418,529	57	514,771	12	367,237	9	933,587	22	4,234,124
2008	2,469,788	56	626,242	14	364,356	8	911,028	21	4,371,414
2009	2,584,751	58	624,850	14	392,792	9	848,152	19	4,450,545
2010	2,470,770	58	540,197	13	413,493	10	826,520	19	4,250,980
2011	2,308,894	55	610,131	15	440,600	11	810,025	19	4,169,650
2012	2,598,458	58	607,522	14	440,600	10	810,025	18	4,456,605

Table 16. Discards (tonnes) by longliners in the WCPFC Statistical Area
(2010, 2011 and 2012 data are provisional)

YEAR	ALBACORE			BIGEYE			YELLOWFIN			TOTAL		
	Retained + Discarded	Discarded	%	Retained + Discarded	Discarded	%	Retained + Discarded	Discarded	%	Retained + Discarded	Discarded	%
1994	64,984	5,836	9.0%	79,180	2,399	3.0%	78,615	4,033	5.1%	222,778	12,268	5.5%
1995	63,341	3,097	4.9%	66,896	1,271	1.9%	84,781	4,612	5.4%	215,018	8,980	4.2%
1996	64,503	3,051	4.7%	55,026	1,018	1.9%	78,832	1,167	1.5%	198,361	5,236	2.6%
1997	80,329	8,499	10.6%	68,223	2,668	3.9%	74,017	3,057	4.1%	222,568	14,223	6.4%
1998	89,927	11,106	12.4%	83,995	2,973	3.5%	70,033	2,682	3.8%	243,955	16,762	6.9%
1999	69,598	773	1.1%	72,035	756	1.1%	59,765	1,142	1.9%	201,398	2,670	1.3%
2000	69,860	279	0.4%	73,477	426	0.6%	80,109	577	0.7%	223,446	1,282	0.6%
2001	89,010	4,175	4.7%	75,780	394	0.5%	81,180	430	0.5%	245,970	4,999	2.0%
2002	94,586	4,937	5.2%	91,174	1,404	1.5%	85,572	1,780	2.1%	271,332	8,121	3.0%
2003	79,259	468	0.6%	82,429	1,410	1.7%	88,488	2,035	2.3%	250,176	3,912	1.6%
2004	78,968	2,053	2.6%	97,921	1,498	1.5%	91,016	1,939	2.1%	267,905	5,490	2.0%
2005	84,440	1,393	1.7%	80,623	516	0.6%	86,523	623	0.7%	251,585	2,532	1.0%
2006	86,499	1,272	1.5%	86,482	770	0.9%	83,663	837	1.0%	256,644	2,878	1.1%
2007	81,084	924	1.1%	84,317	388	0.5%	80,204	353	0.4%	245,605	1,665	0.7%
2008	80,367	1,350	1.7%	85,444	983	1.2%	83,412	2,294	2.8%	249,224	4,627	1.9%
2009	99,743	618	0.6%	82,691	587	0.7%	97,294	749	0.8%	279,728	1,955	0.7%
2010	104,284	928	0.9%	73,919	37	0.1%	92,245	793	0.9%	270,447	1,758	0.7%
2011	93,130	335	0.4%	78,050	86	0.1%	95,085	228	0.2%	266,264	649	0.2%
2012	98,933	79	0.1%	78,348	16	0.0%	85,271	26	0.0%	262,551	120	0.0%
Average	82,781	2,693	3.3%	78,737	1,032	1.3%	82,953	1,545	1.9%	244,471	5,270	2.2%

Table 17. Discards (tonnes) by purse seiners in tropical waters of the WCPFC Statistical Area, excluding the domestic fisheries of Indonesia and the Philippines

YEAR	SKIPJACK			YELLOWFIN			BIGEYE			TOTAL		
	Retained + Discarded	Discarded	%	Retained + Discarded	Discarded	%	Retained + Discarded	Discarded	%	Retained + Discarded	Discarded	%
1995	552,681	12,877	2.3%	187,764	2,084	1.1%	29,295	275	0.9%	769,740	15,237	2.0%
1996	546,482	17,761	3.3%	156,646	1,707	1.1%	38,343	794	2.1%	741,470	20,262	2.7%
1997	416,031	13,687	3.3%	273,028	2,239	0.8%	70,346	760	1.1%	759,405	16,686	2.2%
1998	587,518	18,977	3.2%	363,503	6,289	1.7%	66,080	727	1.1%	1,017,100	25,992	2.6%
1999	534,714	17,806	3.3%	286,159	5,780	2.0%	62,105	1,137	1.8%	882,977	24,723	2.8%
2000	622,872	29,773	4.8%	282,567	1,950	0.7%	40,840	1,050	2.6%	946,279	32,773	3.5%
2001	637,993	45,744	7.2%	269,842	1,889	0.7%	47,326	965	2.0%	955,161	48,598	5.1%
2002	783,938	23,988	3.1%	237,150	2,870	1.2%	60,512	666	1.1%	1,081,600	27,524	2.5%
2003	716,584	24,364	3.4%	278,693	5,016	1.8%	37,395	441	1.2%	1,032,672	29,822	2.9%
2004	802,394	36,188	4.5%	260,003	7,410	2.9%	63,558	1,691	2.7%	1,125,955	45,289	4.0%
2005	887,081	45,773	5.2%	320,051	7,393	2.3%	52,556	1,829	3.5%	1,259,688	54,996	4.4%
2006	943,130	21,692	2.3%	266,331	4,448	1.7%	51,599	630	1.2%	1,261,060	26,769	2.1%
2007	1,086,703	42,164	3.9%	271,002	4,715	1.7%	43,100	565	1.3%	1,400,804	47,444	3.4%
2008	1,034,340	20,997	2.0%	348,442	4,495	1.3%	55,103	1,471	2.7%	1,437,885	26,963	1.9%
2009	1,235,946	33,247	2.7%	286,667	3,010	1.1%	61,540	1,575	2.6%	1,584,154	37,832	2.4%
2010	1,146,330	17,195	1.5%	326,148	2,935	0.9%	53,004	689	1.3%	1,525,482	20,819	1.4%
2011	1,082,253	15,693	1.5%	296,224	2,399	0.8%	70,192	948	1.4%	1,448,669	19,040	1.3%
2012	1,233,416	20,228	1.6%	359,011	395	0.1%	62,898	75	0.1%	1,655,325	20,698	1.3%
Average	825,023	25,453	3.1%	281,624	3,724	1.3%	53,655	905	1.7%	1,160,302	30,081	2.6%

Table 18. Commercial catches of billfish in the WCPFC Statistical Area, by gear type and species

YEAR	LONGLINE					PURSESEINE		
	BLUE MARLIN	BLACK MARLIN	STRIPED MARLIN	SWORD-FISH	SUB-TOTAL	BLUE MARLIN	BLACK MARLIN	SUB-TOTAL
1962	14,197	2,091	15,207	10,354	41,849	0	0	0
1963	11,583	2,100	12,384	9,741	35,808	0	0	0
1964	10,240	1,697	17,023	5,942	34,902	0	0	0
1965	8,303	2,260	13,298	8,176	32,037	0	0	0
1966	8,763	2,408	9,648	9,821	30,640	0	0	0
1967	7,287	2,362	11,506	10,643	31,798	0	0	0
1968	6,673	2,951	11,783	9,504	30,911	0	1	1
1969	7,091	2,619	8,500	8,945	27,155	0	1	1
1970	9,977	3,544	7,594	7,578	28,693	6	14	20
1971	6,450	3,776	6,373	8,615	25,214	8	19	27
1972	7,957	3,696	5,194	8,110	24,957	9	20	29
1973	7,483	3,793	5,550	7,303	24,129	14	31	45
1974	7,253	3,115	4,788	7,990	23,146	7	17	24
1975	7,079	3,281	3,764	8,519	22,643	7	17	24
1976	6,710	2,242	3,497	9,955	22,404	6	16	22
1977	7,020	2,427	2,948	9,583	21,978	9	21	30
1978	8,861	2,787	3,744	9,871	25,263	8	20	28
1979	9,414	2,395	5,059	11,178	28,046	13	29	42
1980	10,245	1,552	4,823	8,740	25,360	13	29	42
1981	10,332	2,009	4,773	10,111	27,225	30	60	90
1982	10,398	2,023	4,536	9,214	26,171	42	90	132
1983	9,005	1,741	3,476	10,108	24,330	67	132	199
1984	12,197	1,317	4,836	9,975	28,325	86	161	247
1985	9,667	1,048	5,509	12,415	28,639	69	137	206
1986	10,348	1,121	6,175	11,473	29,117	66	128	194
1987	14,403	1,533	5,558	12,930	34,424	73	145	218
1988	14,553	2,294	7,613	12,804	37,264	71	142	213
1989	11,893	1,207	6,646	10,695	30,441	86	169	255
1990	10,200	1,120	4,871	11,470	27,661	95	184	279
1991	10,842	1,449	5,237	12,713	30,241	135	253	388
1992	13,302	1,650	5,363	18,322	38,637	141	241	382
1993	15,854	1,428	10,600	19,637	47,519	142	246	388
1994	15,609	1,844	6,189	17,057	40,699	141	239	380
1995	18,044	1,335	7,189	15,714	42,282	144	242	386
1996	14,526	945	5,834	15,177	36,482	160	263	423
1997	12,544	964	5,010	18,175	36,693	179	270	449
1998	16,449	1,545	7,080	19,299	44,373	182	267	449
1999	14,573	1,927	5,882	20,539	42,921	153	235	388
2000	13,797	1,296	4,264	21,214	40,571	184	273	457
2001	15,583	1,498	4,779	18,286	40,146	189	257	446
2002	15,527	1,795	4,375	18,889	40,586	205	278	483
2003	24,193	2,031	5,364	20,236	51,824	214	283	497
2004	21,847	2,293	5,085	22,065	51,290	226	293	519
2005	20,126	2,734	4,277	19,776	46,913	848	628	1,476
2006	17,850	2,430	4,028	22,690	46,998	611	399	1,010
2007	15,035	1,773	3,406	24,835	45,049	824	268	1,092
2008	14,806	1,768	3,666	22,612	42,852	592	442	1,034
2009	14,792	1,972	2,997	19,897	39,658	579	344	923
2010	15,664	2,092	2,847	17,446	38,049	644	661	1,305
2011	14,922	1,785	3,389	17,779	37,875	752	429	1,181
2012	13,813	1,557	3,377	18,981	37,728	918	367	1,285

Table 18 continued

YEAR	OTHER COMMERCIAL GEARS					TOTAL
	BLUE MARLIN	BLACK MARLIN	STRIPED MARLIN	SWORD-FISH	SUB-TOTAL	
1962	1,023	65	0	38	1,126	42,975
1963	1,084	69	0	41	1,194	37,002
1964	1,187	73	2,366	1,203	4,829	39,731
1965	1,283	77	2,790	2,118	6,268	38,305
1966	1,379	82	1,676	1,934	5,071	35,711
1967	1,497	87	1,641	1,161	4,386	36,184
1968	1,528	92	1,255	1,883	4,758	35,670
1969	1,745	98	2,625	1,673	6,141	33,297
1970	1,850	125	1,184	1,895	5,054	33,767
1971	2,064	140	2,284	617	5,105	30,346
1972	2,154	146	1,369	436	4,105	29,091
1973	2,877	174	4,011	972	8,034	32,208
1974	3,238	201	3,930	1,789	9,158	32,328
1975	3,986	206	7,255	3,072	14,519	37,186
1976	3,603	175	4,163	4,138	12,079	34,505
1977	4,858	243	4,980	2,802	12,883	34,891
1978	3,604	156	6,035	2,855	12,650	37,941
1979	3,681	196	3,058	1,368	8,303	36,391
1980	3,631	177	4,008	2,308	10,124	35,526
1981	4,245	195	4,410	2,201	11,051	38,366
1982	3,904	175	2,997	1,643	8,719	35,022
1983	4,243	194	2,667	1,386	8,490	33,019
1984	3,536	211	3,060	1,420	8,227	36,799
1985	4,205	257	3,116	1,540	9,118	37,963
1986	4,045	268	4,181	1,633	10,127	39,438
1987	3,164	195	2,399	1,317	7,075	41,717
1988	3,750	222	2,880	1,552	8,404	45,881
1989	4,059	241	2,211	2,115	8,626	39,322
1990	5,251	342	2,489	1,388	9,470	37,410
1991	5,837	388	1,839	883	8,947	39,576
1992	3,046	218	1,515	1,393	6,172	45,191
1993	3,182	221	1,267	747	5,417	53,324
1994	4,673	289	1,824	924	7,710	48,789
1995	5,254	330	1,248	1,203	8,035	50,703
1996	5,688	339	912	1,260	8,199	45,104
1997	2,212	120	1,017	830	4,179	41,321
1998	2,365	138	1,421	1,082	5,006	49,828
1999	2,391	141	1,340	1,256	5,128	48,437
2000	1,558	96	1,380	1,404	4,438	45,466
2001	1,592	90	1,370	1,050	4,102	44,694
2002	1,611	99	1,587	1,452	4,749	45,818
2003	1,805	122	1,261	1,440	4,628	56,949
2004	1,825	126	1,466	1,383	4,800	56,609
2005	1,909	129	1,334	1,542	4,914	53,303
2006	1,955	142	1,308	1,447	4,852	52,860
2007	2,205	161	1,083	1,389	4,838	50,979
2008	3,784	186	1,446	1,227	6,643	50,529
2009	2,569	126	974	1,211	4,880	45,461
2010	2,794	126	1,895	1,551	6,366	45,720
2011	2,874	126	1,313	1,143	5,456	44,512
2012	2,827	126	1,309	1,146	5,408	44,421

Table 19. Commercial catches of billfish in the WCPFC Statistical Area, by species

YEAR	BLUE MARLIN		BLACK MARLIN		STRIPED MARLIN		SWORDFISH		TOTAL
	TONNES	%	TONNES	%	TONNES	%	TONNES	%	
1962	15,220	35	2,156	5	15,207	35	10,392	24	42,975
1963	12,667	34	2,169	6	12,384	33	9,782	26	37,002
1964	11,427	29	1,770	4	19,389	49	7,145	18	39,731
1965	9,586	25	2,337	6	16,088	42	10,294	27	38,305
1966	10,142	28	2,490	7	11,324	32	11,755	33	35,711
1967	8,784	24	2,449	7	13,147	36	11,804	33	36,184
1968	8,201	23	3,044	9	13,038	37	11,387	32	35,670
1969	8,836	27	2,718	8	11,125	33	10,618	32	33,297
1970	11,833	35	3,683	11	8,778	26	9,473	28	33,767
1971	8,522	28	3,935	13	8,657	29	9,232	30	30,346
1972	10,120	35	3,862	13	6,563	23	8,546	29	29,091
1973	10,374	32	3,998	12	9,561	30	8,275	26	32,208
1974	10,498	32	3,333	10	8,718	27	9,779	30	32,328
1975	11,072	30	3,504	9	11,019	30	11,591	31	37,186
1976	10,319	30	2,433	7	7,660	22	14,093	41	34,505
1977	11,887	34	2,691	8	7,928	23	12,385	35	34,891
1978	12,473	33	2,963	8	9,779	26	12,726	34	37,941
1979	13,108	36	2,620	7	8,117	22	12,546	34	36,391
1980	13,889	39	1,758	5	8,831	25	11,048	31	35,526
1981	14,607	38	2,264	6	9,183	24	12,312	32	38,366
1982	14,344	41	2,288	7	7,533	22	10,857	31	35,022
1983	13,315	40	2,067	6	6,143	19	11,494	35	33,019
1984	15,819	43	1,689	5	7,896	21	11,395	31	36,799
1985	13,941	37	1,442	4	8,625	23	13,955	37	37,963
1986	14,459	37	1,517	4	10,356	26	13,106	33	39,438
1987	17,640	42	1,873	4	7,957	19	14,247	34	41,717
1988	18,374	40	2,658	6	10,493	23	14,356	31	45,881
1989	16,038	41	1,617	4	8,857	23	12,810	33	39,322
1990	15,546	42	1,646	4	7,360	20	12,858	34	37,410
1991	16,814	42	2,090	5	7,076	18	13,596	34	39,576
1992	16,489	36	2,109	5	6,878	15	19,715	44	45,191
1993	19,178	36	1,895	4	11,867	22	20,384	38	53,324
1994	20,423	42	2,372	5	8,013	16	17,981	37	48,789
1995	23,442	46	1,907	4	8,437	17	16,917	33	50,703
1996	20,374	45	1,547	3	6,746	15	16,437	36	45,104
1997	14,935	36	1,354	3	6,027	15	19,005	46	41,321
1998	18,996	38	1,950	4	8,501	17	20,381	41	49,828
1999	17,117	35	2,303	5	7,222	15	21,795	45	48,437
2000	15,539	34	1,665	4	5,644	12	22,618	50	45,466
2001	17,364	39	1,845	4	6,149	14	19,336	43	44,694
2002	17,343	38	2,172	5	5,962	13	20,341	44	45,818
2003	26,212	46	2,436	4	6,625	12	21,676	38	56,949
2004	23,898	42	2,712	5	6,551	12	23,448	41	56,609
2005	22,883	43	3,491	7	5,611	11	21,318	40	53,303
2006	20,416	39	2,971	6	5,336	10	24,137	46	52,860
2007	18,064	35	2,202	4	4,489	9	26,224	51	50,979
2008	19,182	38	2,396	5	5,112	10	23,839	47	50,529
2009	17,940	39	2,442	5	3,971	9	21,108	46	45,461
2010	19,102	42	2,879	6	4,742	10	18,997	42	45,720
2011	18,548	42	2,340	5	4,702	11	18,922	43	44,512
2012	17,558	40	2,050	5	4,686	11	20,127	45	44,421

Table 20. Commercial catches of striped marlin and swordfish in the WCPFC Statistical Area north of the equator

YEAR	STRIPED MARLIN		SWORDFISH		TOTAL
	TONNES	%	TONNES	%	
1962	12,165	55	9,857	45	22,022
1963	9,550	51	9,029	49	18,579
1964	17,913	73	6,745	27	24,658
1965	14,194	60	9,377	40	23,571
1966	9,099	46	10,676	54	19,775
1967	11,802	52	10,920	48	22,722
1968	11,903	54	10,083	46	21,986
1969	10,107	51	9,694	49	19,801
1970	7,574	47	8,517	53	16,091
1971	6,572	47	7,290	53	13,862
1972	4,550	41	6,606	59	11,156
1973	7,496	53	6,769	47	14,265
1974	7,044	47	7,816	53	14,860
1975	9,788	48	10,406	52	20,194
1976	6,222	34	11,904	66	18,126
1977	7,021	38	11,643	62	18,664
1978	8,399	41	11,853	59	20,252
1979	6,605	37	11,011	63	17,616
1980	7,702	45	9,326	55	17,028
1981	7,200	42	10,047	58	17,247
1982	5,315	38	8,625	62	13,940
1983	4,948	33	10,133	67	15,081
1984	6,491	40	9,776	60	16,267
1985	7,312	38	11,990	62	19,302
1986	9,294	45	11,168	55	20,462
1987	6,629	36	11,903	64	18,532
1988	8,659	45	10,697	55	19,356
1989	6,510	39	10,262	61	16,772
1990	5,816	36	10,315	64	16,131
1991	5,769	34	11,179	66	16,948
1992	5,521	26	15,817	74	21,338
1993	10,364	37	17,600	63	27,964
1994	6,025	29	14,760	71	20,785
1995	6,550	32	13,962	68	20,512
1996	5,059	29	12,522	71	17,581
1997	4,329	24	13,694	76	18,023
1998	5,679	29	14,073	71	19,752
1999	4,936	25	15,022	75	19,958
2000	4,047	20	16,169	80	20,216
2001	4,331	25	13,060	75	17,391
2002	3,743	22	13,250	78	16,993
2003	3,962	21	14,749	79	18,711
2004	3,970	21	14,674	79	18,644
2005	3,466	20	13,475	80	16,941
2006	3,280	19	14,071	81	17,351
2007	2,701	15	14,840	85	17,541
2008	3,254	20	13,023	80	16,277
2009	2,287	16	12,287	84	14,574
2010	3,321	22	11,567	78	14,888
2011	3,334	21	12,770	79	16,104
2012	3,539	21	13,167	79	16,706

Table 21. Commercial catches of striped marlin and swordfish in the WCPFC Statistical Area south of the equator

YEAR	STRIPED MARLIN		SWORDFISH		TOTAL
	TONNES	%	TONNES	%	
1962	3,042	85	535	15	3,577
1963	2,834	79	753	21	3,587
1964	1,473	79	397	21	1,870
1965	1,890	67	914	33	2,804
1966	2,139	67	1,044	33	3,183
1967	1,345	60	884	40	2,229
1968	1,135	47	1,304	53	2,439
1969	1,018	52	924	48	1,942
1970	1,204	56	956	44	2,160
1971	2,085	52	1,942	48	4,027
1972	2,013	51	1,940	49	3,953
1973	2,065	58	1,506	42	3,571
1974	1,674	46	1,963	54	3,637
1975	1,230	51	1,185	49	2,415
1976	1,438	40	2,189	60	3,627
1977	906	55	741	45	1,647
1978	1,380	61	873	39	2,253
1979	1,512	50	1,535	50	3,047
1980	1,129	40	1,722	60	2,851
1981	1,983	47	2,265	53	4,248
1982	2,219	50	2,232	50	4,451
1983	1,195	47	1,361	53	2,556
1984	1,406	46	1,619	54	3,025
1985	1,313	40	1,966	60	3,279
1986	1,060	35	1,938	65	2,998
1987	1,328	36	2,344	64	3,672
1988	1,833	33	3,655	67	5,488
1989	2,344	48	2,548	52	4,892
1990	1,535	38	2,543	62	4,078
1991	1,288	35	2,417	65	3,705
1992	1,305	25	3,898	75	5,203
1993	1,503	35	2,783	65	4,286
1994	1,988	38	3,230	62	5,218
1995	1,886	39	2,956	61	4,842
1996	1,687	30	3,915	70	5,602
1997	1,698	24	5,311	76	7,009
1998	2,761	30	6,309	70	9,070
1999	2,285	25	6,773	75	9,058
2000	1,597	20	6,449	80	8,046
2001	1,818	22	6,275	78	8,093
2002	2,219	24	7,091	76	9,310
2003	2,663	28	6,927	72	9,590
2004	2,453	23	8,045	77	10,498
2005	1,816	21	6,722	79	8,538
2006	1,795	17	8,925	83	10,720
2007	1,734	14	10,681	86	12,415
2008	1,905	15	10,458	85	12,363
2009	1,864	18	8,355	82	10,219
2010	1,597	17	7,655	83	9,252
2011	1,755	16	9,053	84	10,808
2012	1,740	15	9,656	85	11,396

Table 22. Commercial catches of albacore, striped marlin and swordfish in the South Pacific Ocean

YEAR	ALBACORE		STRIPED MARLIN		SWORDFISH		TOTAL
	TONNES	%	TONNES	%	TONNES	%	
1962	35,219	100	0	0	0	0	35,219
1963	31,111	100	0	0	0	0	31,111
1964	22,824	100	3	0	3	0	22,830
1965	25,455	100	4	0	3	0	25,462
1966	38,661	100	86	0	35	0	38,782
1967	43,957	99	191	0	50	0	44,198
1968	32,382	99	229	1	106	0	32,717
1969	24,805	99	106	0	31	0	24,942
1970	34,925	99	261	1	40	0	35,226
1971	38,630	83	5,237	11	2,451	5	46,318
1972	39,521	85	4,307	9	2,604	6	46,432
1973	47,330	89	3,395	6	2,727	5	53,452
1974	34,049	86	3,042	8	2,556	6	39,647
1975	23,600	84	2,629	9	1,935	7	28,164
1976	29,082	80	3,919	11	3,398	9	36,399
1977	38,740	88	2,797	6	2,305	5	43,842
1978	34,676	86	2,827	7	2,670	7	40,173
1979	27,076	80	3,966	12	2,636	8	33,678
1980	32,541	83	3,533	9	3,322	8	39,396
1981	34,784	80	4,843	11	3,632	8	43,259
1982	30,788	79	4,719	12	3,312	9	38,819
1983	25,092	81	3,153	10	2,766	9	31,011
1984	24,704	83	2,447	8	2,641	9	29,792
1985	32,328	87	2,235	6	2,642	7	37,205
1986	36,590	86	2,722	6	3,293	8	42,605
1987	25,052	75	4,170	13	4,132	12	33,354
1988	37,867	80	3,657	8	5,717	12	47,241
1989	49,076	87	3,985	7	3,627	6	56,688
1990	36,062	81	3,903	9	4,736	11	44,701
1991	35,600	81	3,349	8	4,854	11	43,803
1992	38,668	79	3,202	7	7,186	15	49,056
1993	35,438	80	3,461	8	5,135	12	44,034
1994	42,318	82	4,097	8	5,442	10	51,857
1995	38,467	83	3,305	7	4,779	10	46,551
1996	34,359	79	3,536	8	5,618	13	43,513
1997	39,490	77	3,999	8	7,631	15	51,120
1998	50,371	79	4,506	7	8,621	14	63,498
1999	39,614	78	3,044	6	7,957	16	50,615
2000	47,338	82	2,283	4	8,182	14	57,803
2001	58,344	81	2,847	4	10,401	15	71,592
2002	73,240	79	4,090	4	15,365	17	92,695
2003	62,477	79	4,095	5	12,309	16	78,881
2004	61,871	74	3,481	4	17,766	21	83,118
2005	63,566	78	2,831	3	14,694	18	81,091
2006	62,444	76	2,617	3	17,193	21	82,254
2007	58,591	75	2,333	3	16,917	22	77,841
2008	62,767	76	2,404	3	16,999	21	82,170
2009	82,943	80	2,283	2	18,844	18	104,070
2010	88,942	80	2,381	2	19,696	18	111,019
2011	72,234	75	2,763	3	21,262	22	96,259
2012	87,012	78	2,482	2	21,915	20	111,409