



**SCIENTIFIC COMMITTEE
FIFTH REGULAR SESSION**

10-21 August 2009
Port Vila, Vanuatu

**ANNUAL REPORT TO THE COMMISSION
PART 1: INFORMATION ON FISHERIES, RESEARCH, AND STATISTICS**

WCPFC-SC5-AR/CCM-06

FEDERATED STATES OF MICRONESIA

National Fisheries Report
5th Meeting of the WCPFC Scientific Committee
August 10-21, 2009
Port Vila, Vanuatu

FEDERATED STATES OF MICRONESIA

CONTENTS

CONTENTS.....	2
List of Tables	2
List of Figures	2
1 Annual Fisheries Information	5
1.1 Flag-State Reporting	5
1.1.1 FSM Purse Seine Catch in the WCPFC Convention Area.....	5
1.1.2 FSM longline Catch in the WCPFC Convention Area	6
1.2 Coastal State Reporting.....	7
1.1.3 Purse Seine Catch in FSM Waters	9
1.1.4 Longline Catch in FSM Waters.....	11
1.1.5 Pole and Line Catch in the FSM Waters	12
2 Research and Statistics.....	13
2.1 The FSM Fisheries Observer Program	13
2.2 The FSM Port Sampling Program.....	14
2.3 Purse Seine Transshipment in FSM.....	15
2.4 Longline Unloading in FSM	16

List of Tables

Table 1. Annual catch and effort estimates for the FSM purse-seine fleet, by species in the WCPFC Convention Area, 2004-2008.	5
Table 2. Annual catch and effort estimates for the FSM longline fleet, by species in the WCPFC Convention Area, 2004-2008	7
Table 3. Annual Number of Foreign Fleet Vessels (by Flag and Gear-type) Licensed to Fish in the FSM EEZ, 2004-2008	8
Table 4. Annual Catch Records for all Gear-types within FSM EEZ, 1995-2008	9
Table 5.a. Historical Annual catches by major purse seine fleets in the FSM EEZ, by flag and species, 2003-2007. Table 5.b. 2008 Catch.	10
Table 6.a. Estimated Annual tuna catches by foreign longline fleets in the FSM EEZ, by flag and species, 2003-2007. Table 6.b. 2008 Catch.....	12
Table 7. Annual catches by foreign pole-and-line fleets in the FSM EEZ, by flag and species, 2003-2007	13
Table 8. Observer Trip Coverage per Flag and Gear-type, 2008.....	14
Table 9. Purse Seine Transshipment Activities in FSM, 2007	15
Table 10. Purse Seine Transshipment Activities in FSM, 2008	15
Table 11. Longline Unloading in FSM, 2007	16
Table 12. Longline Unloading in FSM, 2008	16

List of Figures

Figure 1. Annual distribution of effort (days fishing and searching) for the FSM purse seine fleet throughout the WCPFC Convention Area for 2006 (top), 2007 (middle) and 2008 (bottom)...	6
Figure 2. Annual distribution of effort (100s of hooks) for the FSM longline fleet throughout the WCPFC Convention Area for 2006 (top), 2007 (middle) and 2008 (bottom)	7

Figure 4. Annual distribution of effort by the main foreign purse seine fleets active in the FSM EEZ, 2008	11
Figure 5. Annual distribution of effort by the main foreign longline fleets active in the FSM EEZ for 2008 noting incomplete effort displayed for the Chinese Taipei fleet.	12
Figure 6. Japan Pole and Line Catch and Effort, 2006-2007 (2008 data is not available)	13

Summary

The current estimate of the total catch by the 26 FSM purse seine and longline vessels within the WCPFC Convention Area for the year 2008 is 18,800 mt. Skipjack, yellowfin and bigeye the key target species accounted for 98% of the catches with the remaining 2% of non-target species catch. Approximately 94% of the total catch is taken by the purse seine gear and 6% by the longline gear, the only two gear types employed by FSM, operating within the convention area. The total number of purse seine vessels employed by FSM is 5 purse seiners and 21 longline vessels in 2008.

By species composition, skipjack accounted for 81% (15,245mt) with yellowfin at 13% (2,472mt) and bigeye 5% (846mt), and other species of 1%. In general, catch for our domestic fleet within the convention area has increased 25% over 2007, and 49% over 2006 catches, mainly by our purse seine fleet, but our longline fleet has decreased total catch compared to the 2006, and 2007.

At the present time, data for artisanal fishery is not available as these falls within the states responsibility.

The total FSM EEZ catch in 2008 by all gear types is recorded as 37,338mt (94% by purse seine and 6% by Longline), comprising of 77% skipjack, 17% yellowfin, 5% bigeye tuna, and 1% other species. . By flag, Japan accounted for 38% followed by the US with 24% and Chinese Taipei 23% making them the three main purse seine fleets with the most effort in the zone in 2008. The total longline EEZ catch is reported as 1,193mt with bigeye accounting for 59%, yellowfin 18%, billfish 15%, and 6% of other species. By flag, FSM accounted for 56% of the total longline catch followed by Japan 17%, Chinese Taipei 14%, and China 13%.

In terms of effort, purse seine effort is down in 2008 to just 1,236 days resulting in just 35,203mt of catch, the lowest effort and catch over the last decade in the FSM EEZ for purse seiners. In contrast, the longliner effort increased in 2008 to 4,156 days, the highest over the last five years but the corresponding catch was 1,632mt, the lowest in the last five years. FSM longliners accounted for nearly 60% of the longline effort in the FSM EEZ in 2008 but accounted for only 56% of the total longline catch overall

The FSM Observer program operates with a pool of 12 observers. In 2008, there were 32 successful placements with longliner accounting for 18 trips and purse seiners 14. The low number of purse seine observer trips is attributed to longer purse seine trip days in 2008 from FSM Arrangement vessels and U.S Treaty vessels compared to previous years.

Port Sampling coverage for 2008 is showing 83% (an increase of 13% over 2007) for the purse seiners and 89% for the longliners.

There were a total of 157 purse seine vessels reported to transship in FSM port in 2008 with a total volume of 111,819mt of tuna transshipped. By species, skipjack accounted for 99% with 1% of mixed yellowfin and bigeye. Pohnpei remains the most active port in FSM. The majority of the purse seine vessels unloading in FSM was by Chinese Taipei purse seiners accounting for 83 transshipments followed by US with 11, FSMA 22, 25 FSM, 9 China, and 7 Korea unloading for 2008.

A total of 486 unloading for longline was reported in 2008 for a total of 2,372mt (56% of BET, 18% YFT, and 26% of other species). Most of the unloaded volume by longliners was by the FSM flagged (65%), followed by Chinese Taipei of 20%, and 15% by China.

1 Annual Fisheries Information

1.1 Flag-State Reporting

There were 26 FSM flagged vessels authorized to fish in the Convention Area in 2008. The processed 2008 logsheet data indicated that 15 FSM flagged longline vessels and 5 purse seine vessels submitted catch data for fish caught within the Convention Area. In 2008, 6 FSM flagged longline vessels operated and based out in RMI. *Noting that the RMI based and operated FSM flagged longline vessels' catches for 2008 is included in the WCPFC FSM flagged vessels' total catches.*

The total catch of the three main target species, (YFT, BET and SKJ) by FSM flagged vessels for the year 2008 within the WCPFC Convention Area is estimated to be 18,564mt (an increase of 3,000mt over 2007's catch). By gear type, purse seiners accounted for 95% (17,656mt) and longliners 5% (908.8mt). Other species catch totals by purse seine is recorded as 1mt, while longline is accounted for 235.2mt (Table 1 and 2).

1.1.1 FSM Purse Seine Catch in the WCPFC Convention Area

In 2008, FSM purse seine vessels recorded a total catch of 17,656mt in the Convention Area, as illustrated in Table 1. Approximately 86% (15,245mt) of the total purse seine catch within the WCPFC Convention Area was skipjack and 12% (2,265mt) yellowfin tuna. There was an indication of bigeye tuna catch for 145mt while other species is recorded as 1 metric ton. In 2008, there was an overall fishing effort of 818 days by 5 FSM purse seine vessels in the convention area.

FSM purse seiners concentrated most of their fishing effort in the lower equatorial region, mostly within the lower FSM waters and dispersing into the upper waters of PNG, towards the east. This fishing pattern appears to be the same as that of 2007 but the total catch increased (over- 3,000mt) over the last two years' catches.

Table 1. Annual catch and effort estimates for the FSM purse-seine fleet, by species in the WCPFC Convention Area, 2004-2008.

CATCH (Mt)							
Year	Vessels	Days	SKJ	YFT	BET	OTH	Total
2004	6	1,381	23,045	3,385	570	0	27,000
2005	6	1,222	1,222	23,115	4,062	0	27,457
2006	3	628	8,545	1,049	42	0	9,636
2007	4	650	12,004	1,493	0	0	13,497
2008	5	818	15,245	2,265	145	1	17,656

(Source: unraised logsheet data and coverage is at 85%)

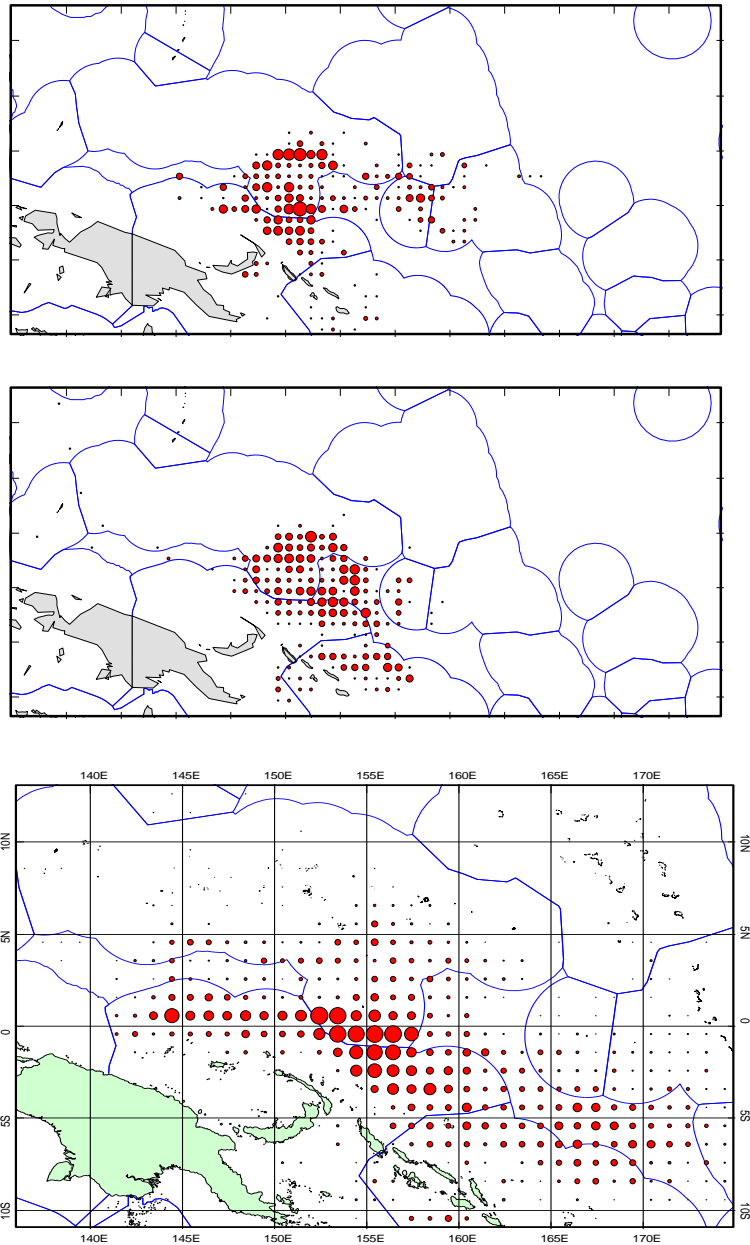


Figure 1. Annual distribution of effort (days fishing and searching) for the FSM purse seine fleet throughout the WCPFC Convention Area for 2006 (top), 2007 (middle) and 2008 (bottom)

1.1.2 FSM longline Catch in the WCPFC Convention Area

The total catch for all species in the WCPFC Convention Area for the FSM flagged longline vessels was reported to be 1,193mt in 2008. Effort data showed 15 vessels fished actively out of the 21 licensed vessels. The total catch by the 15 active vessels is comprised of 72% (701.3mt) bigeye, 28% (207.2mt) yellowfin, 176mt of billfish, and shark is reported to be 39mt (Table 2). Other species and incidental catches is recorded as 49 mt (not shown in Table 1.). Effort by logsheet is showing a higher fishing effort by days and with more vessels in 2008 but the total catch is much lesser, compared to 2007 catch and effort.

Effort for the 15 active FSM longline vessels is more pronounced within the eastern-mid section of the EEZ, towards, Pohnpei area, and becomes lesser in the RMI waters for 2008. Most of the FSM flagged longline vessels are iced-operated, and can only stay out for a fishing period of two weeks before returning to port for unloading. This contributes to the reason as to why the effort is more concentrated near shore. Six of the FSM flagged longline vessels are based and operating in RMI waters, accounting for lesser and much dispersed effort shown in RMI waters (figure 2- bottom).

Table 2. Annual catch and effort estimates for the FSM longline fleet, by species in the WCPFC Convention Area, 2004-2008

Year	Days	Vessels	CATCH (metric Tonnes)										
			ALB	BET	SKJ	YFT	BLM	BUM	MLS	SFA	SWO	SHK	TOTAL
2004	2,351	17	1	542	0.077	185	35	4	3	0	7	113	890
2005	381	10	0	182	0.086	99	2	1	1	0	1	11	297
2006	184	3	0	172	0.076	270	2	1	0	0	0	0	445
2007	337	13	0	1395	0	548	2	11	1	0	1	2	1,960
2008	2,482	15	19	701.3	0.3	207.2	8	155	1	0	12	39	1,193

(Source : Raised logsheet data, not including the 6 RMI based FSM longline vessels' catches)

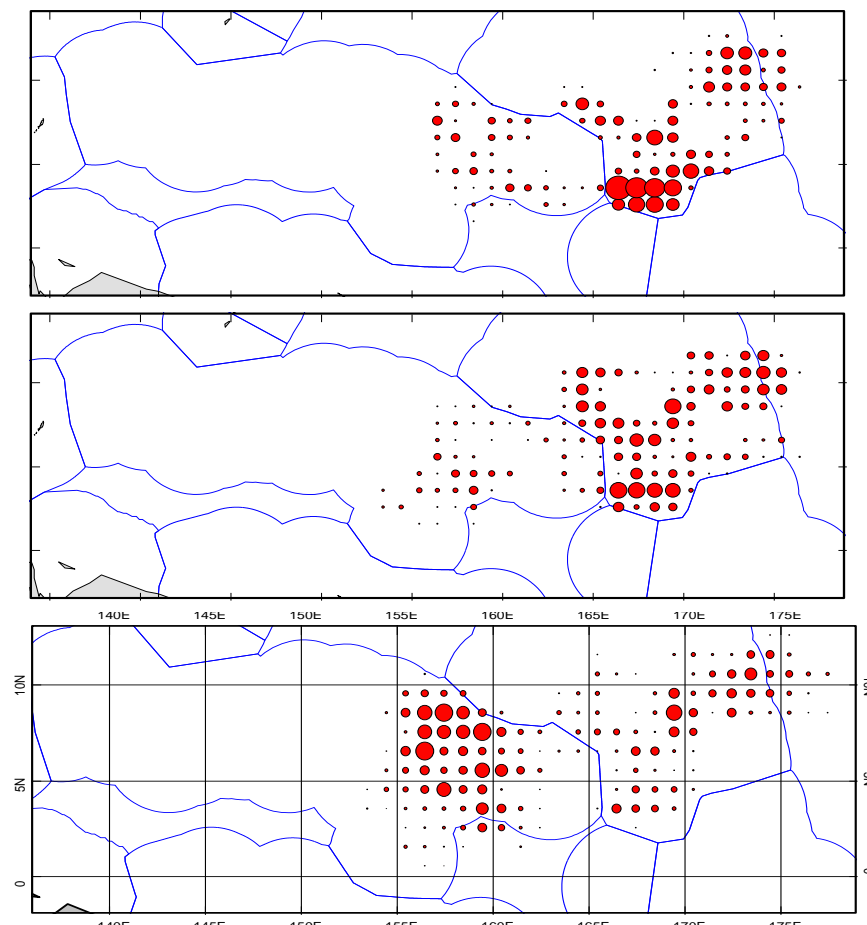


Figure 2. Annual distribution of effort (100s of hooks) for the FSM longline fleet throughout the WCPFC Convention Area for 2006 (top), 2007 (middle) and 2008 (bottom)

1.2 Coastal State Reporting

1.2.1 Fleet Structure

In 2008, a total of 322 longline, pole and line and purse seine fishing vessels were licensed to fish in the FSM EEZ which were predominantly foreign fishing vessels. By gear type, longliners accounted for 126, pole and line 25, and purse seiners 171. Of the 133 longliners, Japan accounted for 58 followed by Chinese Taipei with 40, FSM 21 and China 7. In terms of purse seiners, Chinese Taipei accounted for 38 followed by Japan with 35, Korea 30, United States with 26, FSM 5, and Vanuatu 15. Japan is the only country employing the pole and line gear with 25 licensed in 2008.

Table 3. Annual Number of Foreign Fleet Vessels (by Flag and Gear-type) Licensed to Fish in the FSM EEZ, 2004-2008

Country	Longline					Pole & Line					Purse Seine				
	2004	2005	2006	2007	2008	2004	2005	2006	2007	2008	2004	2005	2006	2007	2008
Chinese, Taipei	69	31	38	27	40	-	-				34	33	34	34	38
South Korea	-	-				-	-				28	27	28	28	30
United States	-	-				-	-				22	14	13	21	32
Japan	88	104	78	66	58	30	37	26	8	25	34	34	36	35	35
Peoples Republic of China	27	-	8	11	7	-	-				8	8	9	10	11
Vanuatu	9	-				-	-				11	8	8	14	15
Papua New Guinea	-	-				-	-				9	2	4	10	
Belize	2	2				-	-					-			-
Kiribati	-	-				-	-				1	-	1	1	
FSM	22	20	24	29	21	-	-				6	6	5	4	5
Rep. of Marshall Islands	-	-				-	-				3	1	2	4	5
New Zealand	-	-				-	-				4	-			-
Philippines	-	1	1			-	-				1	-			-
Netherlands Antilles													1	1	-
Solomon													2		
Total	217	159	149	133	126	30	37	26	8	25	161	133	143	162	171

(Source: NORMA Licensing Records)

1.2.2 Catch in FSM EEZ

The 2008 catch by the tuna fishery in the FSM EEZ by logsheets is estimated to be 36,837mt, a dramatic decrease in catch by all gear types within the FSM waters, the lowest recorded catch in the FSM's history. Purse seine accounted for 35,203mt followed by longliners 1,632 with incomplete (showing only two tons for 2008) catch by the pole and line vessels. Total EEZ catch in 2008 shows a drastic decline in historical catches by all gear types, over the last 13 years. This is a reduction of 98% in purse seine, and 65% in longline catches below 2007 EEZ total catch. The drastic decrease of the total EEZ catch in 2008 is due to a significant decrease in fishing effort amongst the purse seine fleets as well as the longliners for this period.

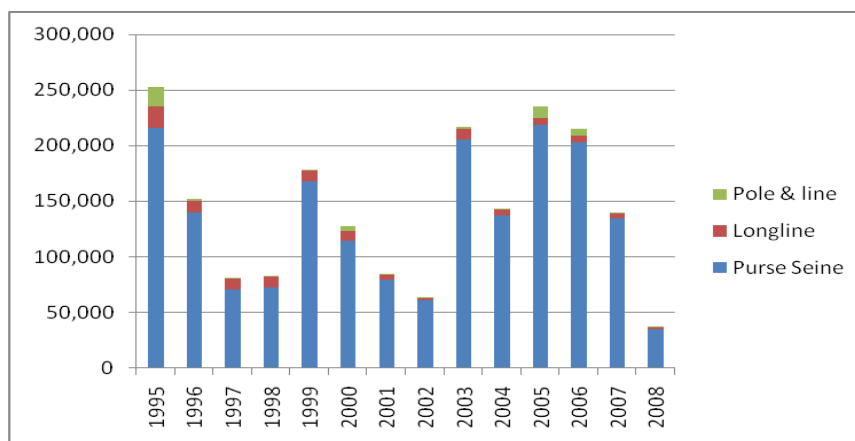


Figure 3. Trend of Catch by all gear-types in FSM Waters, 1995-2008

Table 4. Annual Catch Records for all Gear-types within FSM EEZ, 1995-2008¹

	Purse Seine	Longline	Pole & line	Total
1995	216,294	18,724	18,156	253,174
1996	139,731	11,081	1,054	151,866
1997	70,572	9,597	1,003	81,172
1998	73,027	9,216	1,026	83,269
1999	168,127	9,791	555	178,474
2000	114,372	9,125	3,814	127,311
2001	79,171	5,221	687	85,079
2002	61,101	2,820	83	64,004
2003	205,389	9,364	2,562	217,315
2004	137,139	5,328	1,384	143,851
2005	218,419	6,106	11,096	235,621
2006	202,752	6,116	6,032	214,900
2007	134,489	4,630	572	139,691
2008	35,203	1,632	2	36,837

1.1.3 Purse Seine Catch in FSM Waters

The 2008 total catch by purse seine gear type within the FSM EEZ is recorded as 35,203mt. The purse seine total catch has the most impact over the total EEZ catch and the major decrease in fishing effort for 2008 by all the purse seine fleets marks a historical fall of EEZ total catch of less than 50,000mt. Over the last decade, the purse seine total catch within the EEZ has fluctuated between 50,000 to 200,000mt with an overall average of 139,000mt annually over the past 13 years. The purse seine total catch for the EEZ for 2008 marks the lowest catch ever recorded, certainly over the past 13 years.

In terms of fishing effort, US fished with the most effort (by fishing days) followed by Chinese Taipei, and Japan, although records indicated the highest catch was by the Japanese purse seiners, having more vessels actively fished within the EEZ for this period. Figure 4 displays the three main purse seine fleets and their areas of concentrated fishing days within the EEZ in 2008. All the three main purse seine fleets were fishing within the lower and south-east part of FSM waters.

¹ 2004-2008 Data updated by SPC-OFP in July 2009.

Table 5.a. Historical Annual catches by major purse seine fleets in the FSM EEZ, by flag and species, 2003-2007. Table 5.b. 2008 Catch.

Fleet	Year	Days	CATCH (metric tonnes)					TOTAL
			SKJ	YFT	BET	OTH		
China	2003	291	8,377	897	39	0	9,313	
	2004	261	2,232	29	3	0	2,263	
	2005	561	9,888	3,160	178	0	13,226	
	2006	931	15,623	1,415	41	0	17,078	
	2007	500	7,874	1,017	0	2	8,892	
FSM Arrangement	2003	932	20,015	3,052	337	0	23,404	
	2004	1,018	19,369	2,948	379	0	22,697	
	2005	1,457	27,316	6,164	449	0	33,928	
	2006	1,235	28,543	4,808	146	0	33,497	
	2007	1,052	24,520	2,995	29	13	27,557	
Japan	2003	1,994	65,043	5,412	999	0	71,454	
	2004	2,131	46,952	7,965	1,112	0	56,030	
	2005	2,503	68,401	11,161	1,151	0	80,713	
	2006	1,721	58,641	7,068	926	0	66,634	
	2007	930	26,490	2,360	503	0	29,352	
Korea	2003	1,702	46,607	2,894	40	0	49,541	
	2004	1,366	19,125	3,774	268	0	23,167	
	2005	1,422	28,313	6,839	494	0	35,647	
	2006	992	28,115	3,177	285	0	31,577	
	2007	545	10,064	805	0	1	10,870	
Chinese Taipei	2003	1,919	37,288	4,940	455	0	42,683	
	2004	1,593	25,958	4,040	185	0	30,183	
	2005	2,416	42,975	7,058	558	0	50,591	
	2006	1,838	48,295	3,167	158	0	51,620	
	2007	2,049	48,700	4,541	46	0	53,286	
USA	2003	296	4,907	462	103	0	5,471	
	2004	61	239	174	60	0	474	
	2005	81	1,559	265	92	0	1,916	
	2006	24	109	8	4	0	121	
	2007	99	1,870	412	15	0	2,297	
Vanuatu	2003	155	3,187	294	43	0	3,523	
	2004	112	1,640	654	33	0	2,327	
	2005	91	2,166	226	6	0	2,397	
	2006	71	2,026	198	1	0	2,224	
	2007	68	1,808	422	5	0	2,235	
TOTAL EEZ	2003	7,288	185,424	17,950	2,015	0	205,389	
	2004	6,542	115,515	19,583	2,041	0	137,139	
	2005	8,531	180,618	34,874	2,927	0	218,419	
	2006	6,812	181,351	19,840	1,561	0	202,752	
	2007	5,243	121,325	12,550	598	16	134,489	

(5.a. Historical Purse Seine Catches in FSM EEZ - Source : Regional tuna fisheries database)

Catch (metric tonnes)								
Year	Flag	F. Days	Vessels	BET	SKJ	YFT	OTH	TOTAL
2008	KR	33	13	0	245	0	0	245
2008	CN	50	6	0	730	210	0	940
2008	FM	267	5	35	3,570	518	0	4,123
2008	TW	283	27	8	7,084	1,005	0	8,097
2008	US	332	17	20	6,590	1,969	5	8,584
2008	JP	271	28	571	10,388	2,255	0	13,214
1,236			96	634	28,607	5,957	5	35,203

(5.b. 2008 Purse Catch in FSM EEZ, sourcing from logsheet data.)

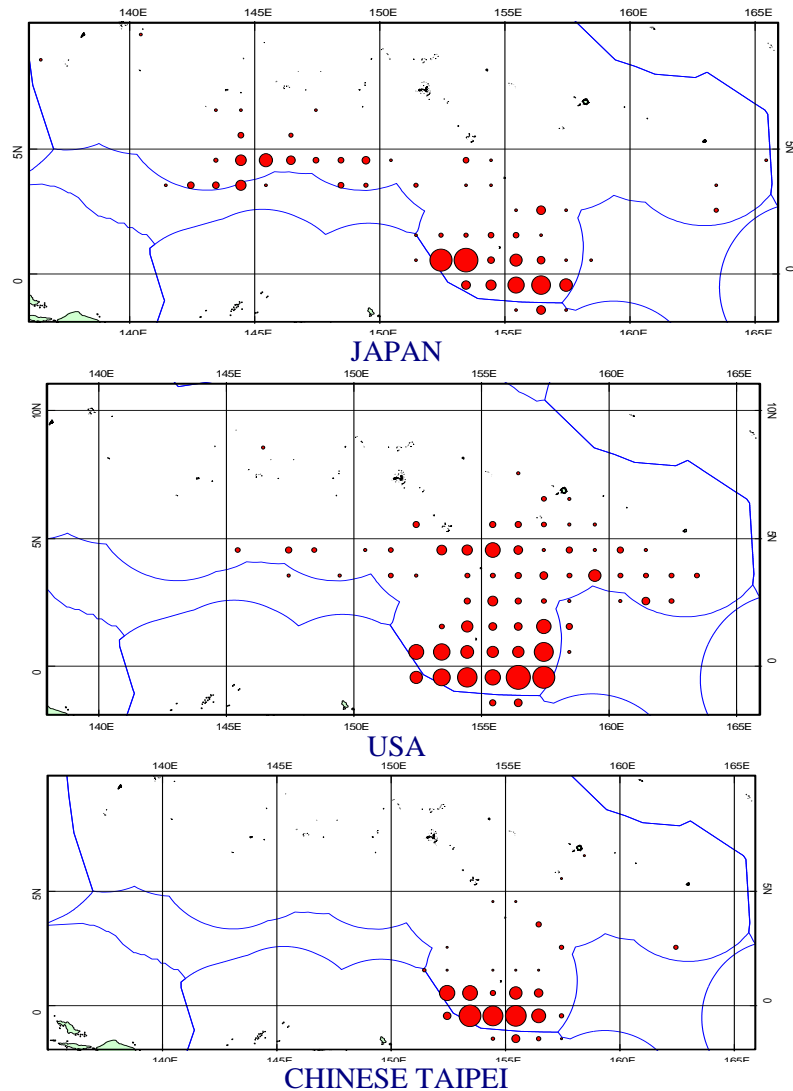


Figure 3. Annual distribution of effort by the main foreign purse seine fleets active in the FSM EEZ, 2008

1.1.4 Longline Catch in FSM Waters

The total longline catch targeting yellowfin and bigeye tuna in the FSM EEZ by the four fleets was 1,632mt. Catch by flag, Japan accounted for 22% (364mt) of the total catch while the Pohnpei based Chinese longline fleet accounted for 17% (280mt). The catch of the domestic based- Chinese Taipei longliners also declined accounting for 17% (283mt) while FSM accounted for the most of 44% or 705mt. The FSM flagged vessels had the most effort of 1,609 days, China with 806 days, Japan with 525 days, and Chinese Taipei with the least, 343 days (Table 6.b.).

Logsheet records indicated that most of the fishing effort by the FSM, Chinese Taipei, and China fleets occurred near shore and not far from home base, Pohnpei. The Guam based Japan fleet is showing a scattered effort within the upper and lower mid section of the FSM waters.

The recent update (July 2009) CES update is indicating that the total longline EEZ catch for 2008 does not include catches from our Guam based Chinese Taipei fleet of at least 23 vessels. Logsheet data for these fleet is still pending, thus making our EEZ longline total catch an under-estimate for 2008.

Table 6.a. Estimated Annual tuna catches by foreign longline fleets in the FSM EEZ, by flag and species, 2003-2007. Table 6.b. 2008 Catch

Fleet	Year	Tuna Catch (metric tonnes)		
		YFT	BET	TOTAL
China	2003	568	2,358	2,925
	2004	158	754	912
	2005	14	38	53
	2006	147	257	405
	2007	249	772	1,020
FSM	2003	195	438	633
	2004	105	274	379
	2005	33	45	78
	2006	21	22	44
	2007	17	32	49
Japan	2003	2,202	2,564	4,766
	2004	1,362	2,154	3,517
	2005	3,109	2,654	5,764
	2006	2,460	2,703	5,162
	2007	1,330	1,749	3,079
Chinese Taipei	2003	382	658	1,040
	2004	179	341	520
	2005	97	115	212
	2006	181	324	505
	2007	136	345	481
TOTAL EEZ	2003	3,346	6,018	9,364
	2004	1,804	3,524	5,328
	2005	3,253	2,853	6,106
	2006	2,809	3,307	6,116
	2007	1,732	2,898	4,630

(6.a. Source : Regional tuna fisheries database)

Year	Flag	F.Days	Catch (mt)											TOTAL	
			ALB	BET	SKJ	YFT	BLM	BUM	MLS	SFA	SWO	SHK	OTH		
2008	CN	806	1	175	0	47	0	38	0	0	0	3	5	11	280
	FM	1,609	15	410	0	124	0	119	0	0	0	9	25	3	705
	JP	525	6	235	0	90	0	26	0	0	0	3	2	1	364
	TW	343	0	141	0	26	0	80	0	0	0	11	13	12	283
Total		3,283	22	961	0	287	0	263	0	0	0	26	45	27	1,632

(6.b. Source: Regional tuna fisheries database; 2008 data)

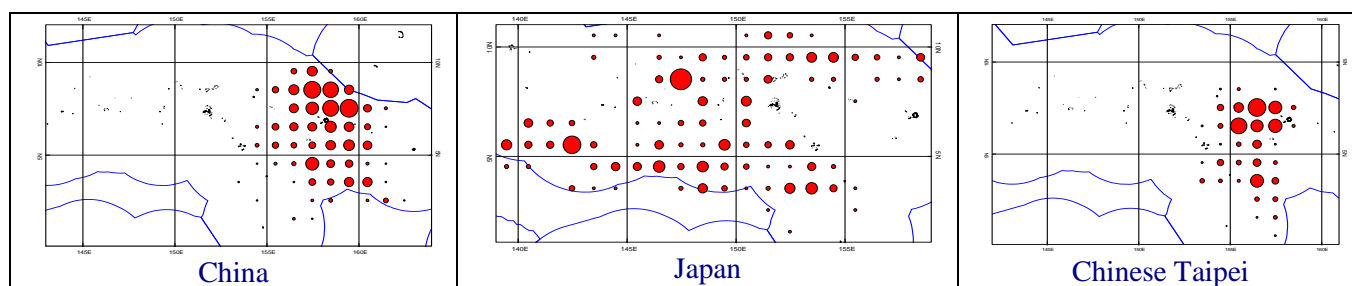


Figure 4. Annual distribution of effort by the main foreign longline fleets active in the FSM EEZ for 2008 noting incomplete effort displayed for the Chinese Taipei fleet.

1.1.5 Pole and Line Catch in the FSM Waters

Provisionally, there was no catch reported by the pole and line fleet for 2008 from our current updates and so we are only reporting on 2007's update. Table 7 presents the annual catch summaries for years 2002 to 2007, whereas Figure 6 illustrated the spread of Japan's pole and line fleet in 2006 and 2007. This report is updating 2007's pole and line catch within the FSM's EEZ as FSM's SC4 report was updating only 2005 and 2006.

Table 7. Annual catches by foreign pole-and-line fleets in the FSM EEZ, by flag and species, 2003-2007

Fleet	CATCH (metric tonnes)							
	Year	F.Days	Vessels	BET	SKJ	YFT	OTH	TOTAL
JAPAN	2004			3	1,374	7	0	1384
	2005			5	11,063	28	0	11096
	2006			0	6,023	9	0	6032
	2007	108	7	1	568.5	2.5	0	572

(Source : Regional tuna fisheries database; 2007 data are not yet available)

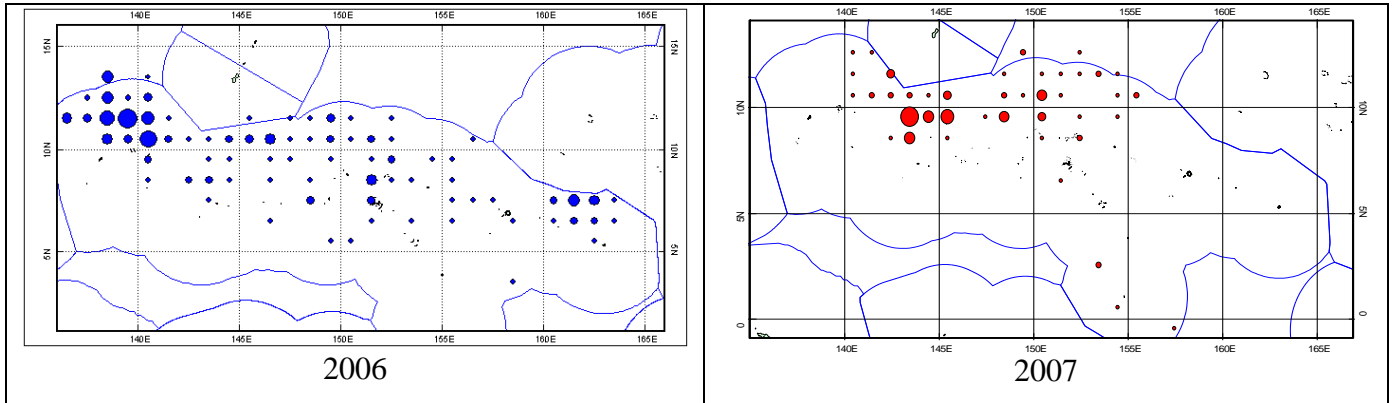


Figure 5. Japan Pole and Line Catch and Effort, 2006-2007 (2008 data is not available)

2 Research and Statistics

2.1 The FSM Fisheries Observer Program

NORMA’s Fisheries Observer Program (FOP) has been operating since the Authority began in 1979. With the expansion and diversification of the fleets in the FSM, FOP was expanded to a maximum pool of 12 personnel. Since 1995, FOP has been operating with 10-12 observers under contractual services. .

The NORMA FOP achieved 32 observed trips for a total of 860 sea-days covering both longline and purse seine vessels. The observer placement coverage on longline gear for 2008 is indicating 7.4%, and 45% on the purse seine gear. However this need to be viewed cautiously as the logsheets and observer data are incomplete and some observer trips did not enter FSM’s waters.

The 2008 purse seine and longline observer coverage is based on the available information sourced from the SPC and NORMA records.

Table 8. Observer Trip Coverage per Flag and Gear-type, 2008

Gear	Flag	Obsvd.Seadays	EEZ F. days	Coverage%	
Longline					
Trips-	1	China	14	806	2%
	4	FSM	55	2,482	2%
	9	Chinese Taipei	128	343	37%
	4	Japan	111	525	21%
Purse Seine					
Trips-	1	China	53	50	100%
	1	FSM (FSMA)	33	257	13%
	3	Japan	119	271	44%
	3	Korea	105	38	100%
	2	Chinese Taipei	60	283	21%
	5	USA	182	332	55%
Longline	Total	18	308	4156	7.4%
Purse Seine	Total	14	552	1231	45%
Grand Total		32	860	5387	16%

The 2008 coverage for the FSM Observer Program has declined to 16% overall. Longline observer coverage for 2008 is indicating 7.4% while purse seine is at 45%. The 2008 decline of 2% from 2007 overall coverage is due to very low coverage on two longline fleets, (FSM and China) for this period. The FSM Observer Program has recently increased the number of observer placements on its flagged vessels, and had already trained more observers to increase observer coverage on all fleets with bi-lateral fishing agreements with the FSM. Table 10 presents the overall coverage of the main fishing gear-types, by flag, operating in FSM EEZ. For 2008, the coverage for all gear type is 16%, although it needs to be reviewed carefully as some of the observed trips may not have actually entered FSM waters.

Most of the FSM flagged longline vessels are operating in zone and therefore the FSM Observer Program can and will ensure that all the FSM flagged longline vessels are fully covered under the WCPFC's observer coverage requirement of not less than 10%. With the three to five FSM longline vessels that operate in RMI waters and occasionally fished in the high seas, FSM and RMI has made an agreement (in July 2009) for reciprocal placements of observers on their vessels. This also applies to the RMI and FSM purse seine flagged vessels that operate within the WCPFC convention area. The agreement basically allows RMI vessels to be covered by FSM national observers and visa verse.

TUFFMAN is still in its early stage and has recently been updated with few more features to be upgraded for reporting, and so FSM does not have species composition to report on, from its observer data at this stage.

2.2 The FSM Port Sampling Program

NORMA continues to coordinate its port sampling program and monitor the continuous unloading and transshipment activities within FSM ports. In addition, NORMA has also use its observer program to assist in conducting port sampling activities within its active port of transshipments and unloading. There has been no reported transshipment /unloading activities from the other FSM unloading ports over the last four years, but rather concentrated in one port, Pohnpei. NORMA's current record is showing a sampling coverage for purse seine transshipments at 83%, while longline sampling coverage is indicating a much higher coverage of 89%.

2.3 Purse Seine Transshipment in FSM

The 2008 purse seine unloading volume is indicating 111,819mt of tuna from 157 vessels. This is 19,657mt less than the total unloaded volume reported for 2007 for FSM. The unloading total of 2008 is still provisional at this stage as the purse seine unloading total is yet to be completed. Pohnpei port has remained the only active purse seine port of transshipments during the last five years and the only active port of Purse Seine unloading. Tables 12 and 13 present summaries of the purse seine transshipment activities in FSM for years 2007 and 2008 by total volume and flag.

The majority of the vessels were Chinese Taipei (TW) flagged (83 boats) that transshipped 51% of the FSM total transshipment volume (56,632mt). There were 9 Chinese flagged purse seine vessels that transshipped approximately 7%. There were 11 US vessels, and 22 Vanuatu registered (FSMA) vessels that unloaded a volume of 25,542mt (23%). The FSM flagged vessel unloaded approximately <14%, and the Korean vessels for only 5%. *This report notes that the 2008 total unloaded volume and number of unloading reported in FSM port is still an under estimate as data is still provisional at this stage.*

Table 9. Purse Seine Transshipment Activities in FSM, 2007

Port	Flag	Records in MT				Unloading
		SKJ	YFT	Mixed	Total	
Pohnpei	CN	30980	664	336	31,980	41
	KI	470	20	0	490	1
	KR	23,100	100	0	23,200	29
	TW	59,251	2,601	68	61,920	72
	FM	4,000	100	0	4,100	6
	VU	9,770	10	6	9,786	13
	TOTAL		127,571	3,495	410	131,476

Source: NORMA Records

Table 10. Purse Seine Transshipment Activities in FSM, 2008

Port	Flag	Records in MT				Unloading
		SKJ	YFT	Mixed	Total	
Pohnpei	CN	7911	19	112	8,042	9
	US	8800	199	0	8,999	11
	KR	6,027	47	0	6,074	7
	TW	56,443	121	68	56,632	83
	FM	15,500	29	0	15,529	25
	VU	16,521	10	12	16,543	22
	TOTAL		111,202	425	192	111,819

Source: NORMA Records

2.4 Longline Unloading in FSM

The current records is showing a total of 2,013mt of tuna and other species by the three longline fleets, based in Pohnpei, FSM for 2008. The three fleets are comprised of 21 FSM flagged, 8 Chinese Taipei flagged, and 7 China flagged longline vessels, actively fished and unloaded all their catches in FSM. The total unloaded total for 2008 is slightly less than 5% of the 2007 unloaded total.

The 2008 unloading records by TUFFMAN showed a total of 306 longline vessels, unloading a total volume of 2,372.3mt (56.% BET, 18% YFT, and 26% other species). Majority of the unloaded total was by the FSM flagged longline vessels. (Table 11-2007 unloading record and 12 -2008 unloading records).

The unloaded total for the domestic based longline fleets of FSM, China, and Chinese Taipei for 2008 does not match up with the total catch in zone. The unloaded total for longline is indicating higher figures in volume of catches unloaded than shown in catch records for all the three fleets that fish and unload in FSM.

Table 11. Longline Unloading in FSM, 2007

Port	Year	Flag	Species	Mt	Unloading
POHNPEI	2007	CN			
		CN	BET	277.8	16
		CN	YFT	89.2	
		CN	OTH	16	
		TW	BET	292.7	12
		TW	YFT	101.6	
		TW	OTH	62	
		FM	BET	1,036.6	458
		FM	YFT	415.4	
		FM	OTH	81	
Total				2,372.3	486

Source: NORMA Records

Table 12. Longline Unloading in FSM, 2008

Flag	FMLL	CHLL	TWLL	Total
No of Boats	21	7	8	36
Unloading	195	44	67	306
ALB	16.5	1.2	0	17.7
YFT	331.4	26.1	75.1	432.6
BET	879.1	123.4	329.9	1332.4
SKJ	0.1	0	0	0.1
MLS	1.3	0	0	1.3
BUM	117.8	8	0	125.8
BLM	66.7	13.7	0	80.4
SWO	18.8	0	3.5	22.3
Total	1,431.7	172.4	408.5	2,012.6

(Source: TUFFMAN Unloading data at NORMA-catches in metric tones)