



**SCIENTIFIC COMMITTEE
FIFTH REGULAR SESSION**

10–21 August 2009
Port Vila, Vanuatu

ESTIMATES OF ANNUAL CATCHES IN THE WCPFC STATISTICAL AREA

WCPFC-SC5-2009/ST IP-1

Paper prepared by

Oceanic Fisheries Programme (OFP)
Secretariat of the Pacific Community (SPC)
Noumea, New Caledonia

INTRODUCTION

Estimates of annual catches in the WCPFC Statistical Area (Figure 1) are presented for target tuna species, i.e., albacore (*Thunnus alalunga*) bigeye (*Thunnus obesus*), skipjack (*Katsuwonus pelamis*) and yellowfin (*Thunnus albacares*), and major billfish species, i.e., black marlin (*Makaira indica*), blue marlin (*Makaira mazara*), striped marlin (*Tetrapturus audax*) and swordfish (*Xiphias gladius*). Estimates of catches of southern bluefin tuna (*Thunnus maccoyii*), which are compiled by the Commission for the Conservation of Southern Bluefin Tuna (CCSBT), and catches of small tunas in the domestic fisheries of Indonesia and the Philippines are not presented. Recent catches of tuna in the domestic fisheries of Vietnam may have amounted to about 19,000 tonnes of skipjack, 18,000 tonnes of yellowfin and 5,500 tonnes of bigeye, for a total of 42,500 tonnes (Lewis 2005); however, these catches have been ignored in the tables and figures presented below. The compilation of estimates of catches of Pacific bluefin tuna (*Thunnus orientalis*) commenced only recently; estimates for Pacific bluefin will be presented in future editions of this report.

TARGET TUNA SPECIES

Tables 1–3 and Figures 2 and 3 present estimates of annual catches of target tunas in the WCPFC Statistical Area. For the sources of the annual catch estimates, see Lawson (2008). For discussion regarding trends, see Williams & Terawasi (2009). Estimates of purse-seine catches of bigeye and yellowfin that were not already adjusted for the misidentification of bigeye as yellowfin have been adjusted by the OFP (Lawson 2007). Estimates for 2007–2008 are preliminary.

Tables 4–7 present estimates of annual catches of target tunas in the WCPO Area and the EPO Area (Figure 1) by gear type. Tables 8–10 present estimates of annual catches of target tunas for the WCPO, the EPO and the Pacific Ocean by species. Table 11 and 12, and Figures 4 and 5, present global catches of target tunas, by species and ocean area respectively.

MAJOR BILLFISH SPECIES

Table 13 presents estimates of commercial catches of the four major billfish species by gear type. Table 14 and Figure 6 present estimates of the major billfish catches for all gear types combined. Tables 15 and 16 present estimates of commercial catches of striped marlin and swordfish in the WCPFC Statistical Area north and south of the equator respectively.

REFERENCES

- Lawson, T.A. [ed.]. 2008. WCPFC Tuna Fishery Yearbook, 2007. Western and Central Pacific Fisheries Commission, Pohnpei, Federated States of Micronesia.
- Lawson, T.A. 2007. Further analysis of the proportion of bigeye in 'yellowfin plus bigeye' caught by purse seiners in the WCPFC Statistical Area. Information Paper ST-IP-5. Third Regular Session of the WCPFC Scientific Committee, 13–24 August 2006, Honolulu, Hawaii, United States of America. Oceanic Fisheries Programme, Secretariat of the Pacific Community, Noumea, New Caledonia.
- Lewis, A.D. 2005. The Tuna Fisheries of Vietnam — An Overview of Available Information. Information Paper ST-IP-5. First Regular Session of the Scientific Committee of the Western and Central Pacific Fisheries Commission, 8–19 August 2005, Noumea, New Caledonia. Oceanic Fisheries Programme, Secretariat of the Pacific Community, Noumea, New Caledonia.
- SPC. 2008. Estimates of annual catches in the WCPFC Statistical Area. Information Paper ST-IP-1. Fourth Regular Session of the WCPFC Scientific Committee, 10–22 August 2008, Port Moresby, Papua New Guinea. Oceanic Fisheries Programme, Secretariat of the Pacific Community, Noumea, New Caledonia.
- Williams, P. & P. Terawasi. 2009. Overview of tuna fisheries in the Western and Central Pacific Ocean, Including Economic Conditions – 2008. Working Paper GN-WP-1. Fifth Regular Session of the WCPFC Scientific Committee, 10–21 August 2009, Port Vila, Vanuatu. Oceanic Fisheries Programme, Secretariat of the Pacific Community, Noumea, New Caledonia and Pacific Islands Forum Fisheries Agency, Honiara, Solomon Islands.

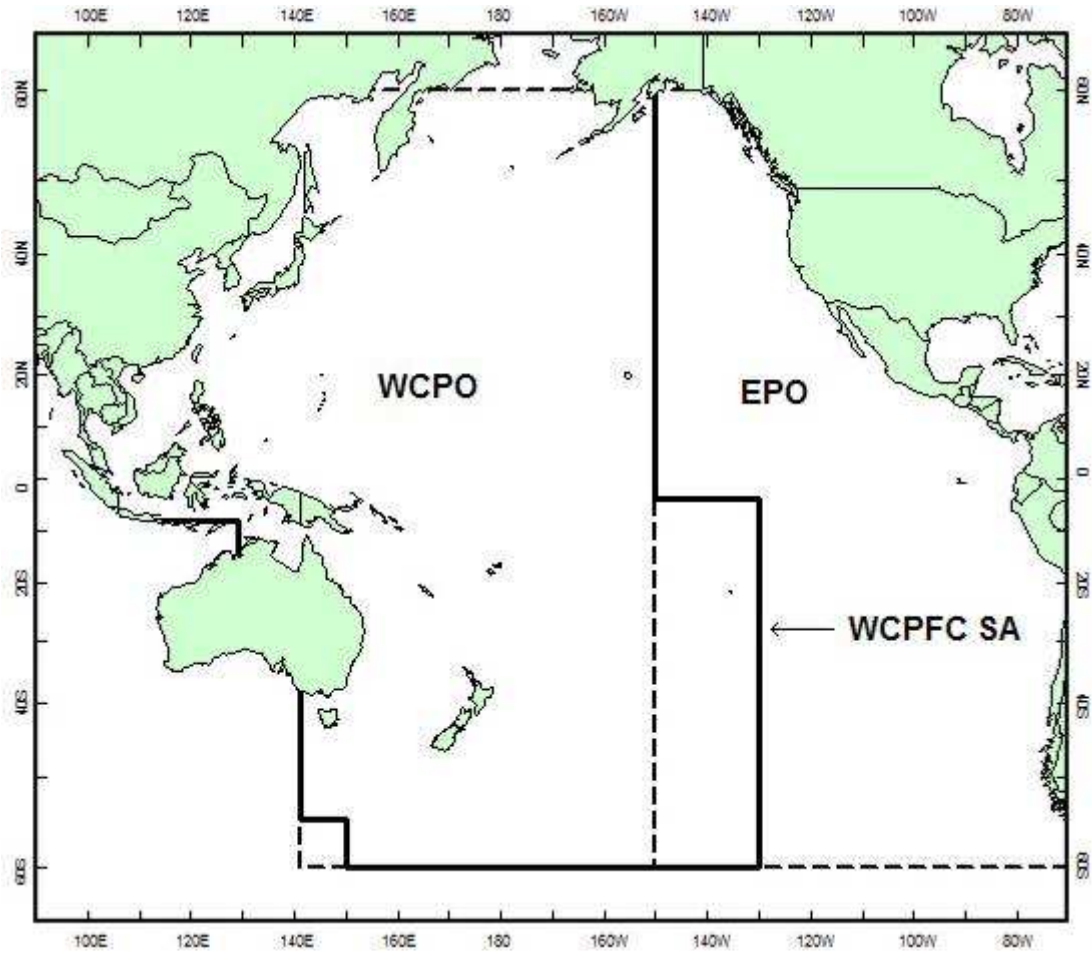


Figure 1. WCPFC Statistical Area (WCPFC SA), the Western and Central Pacific Ocean (WCPO) Area and the Eastern Pacific Ocean (EPO) Area

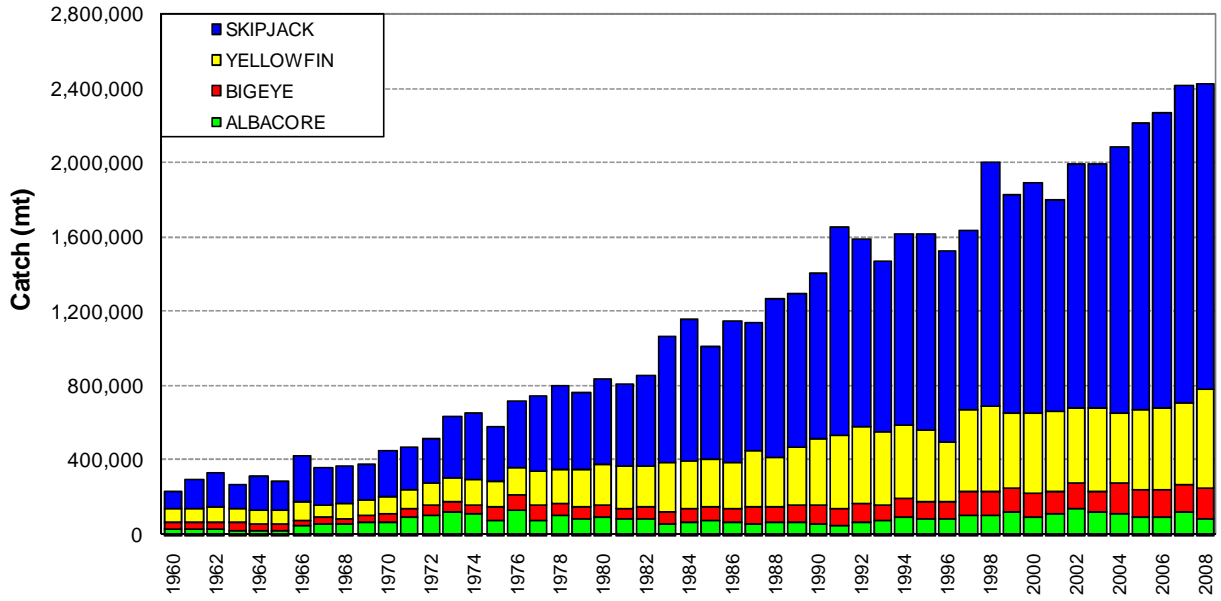


Figure 2. Catches of tuna in the WCPFC Statistical Area, by species

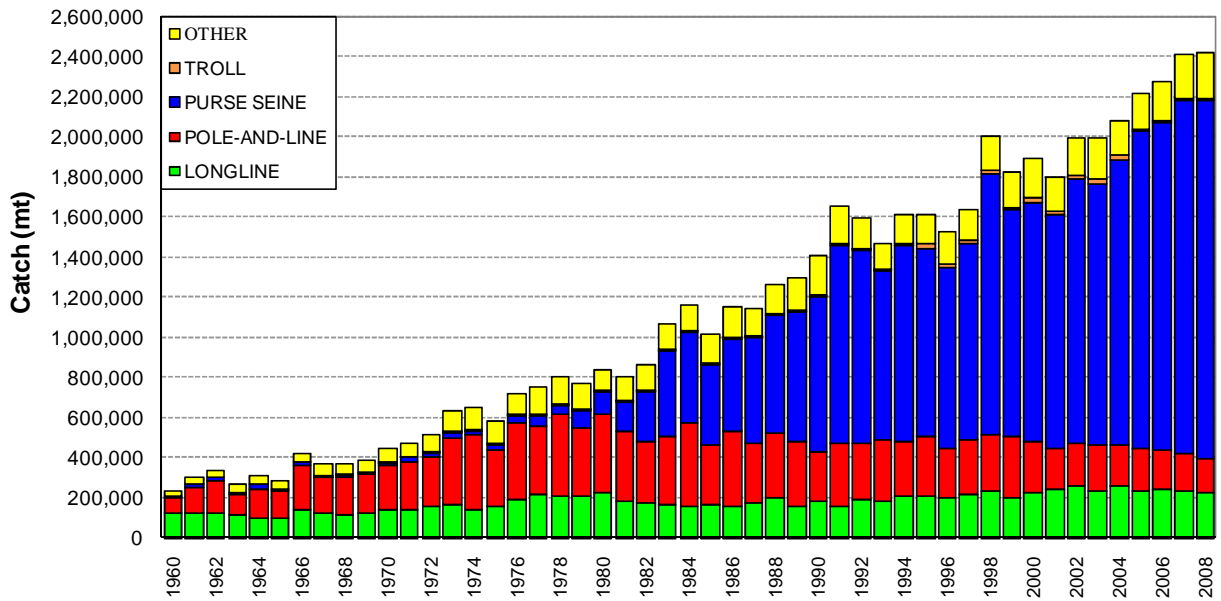


Figure 3. Catches of tuna in the WCPFC Statistical Area, by gear type

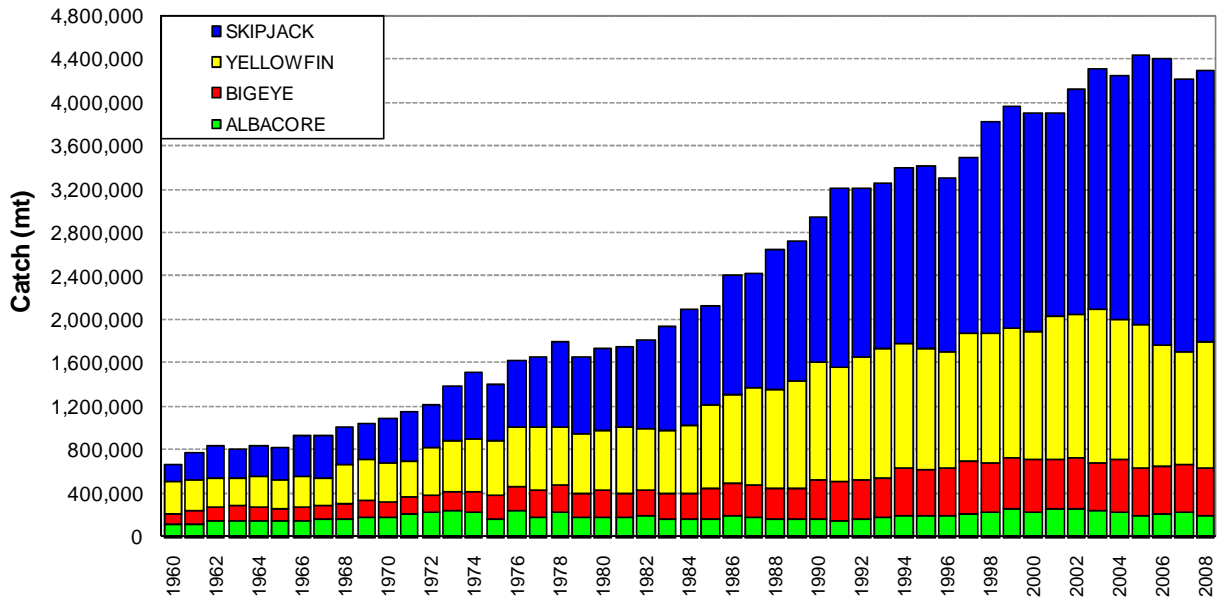


Figure 4. Global catches of tuna, by species

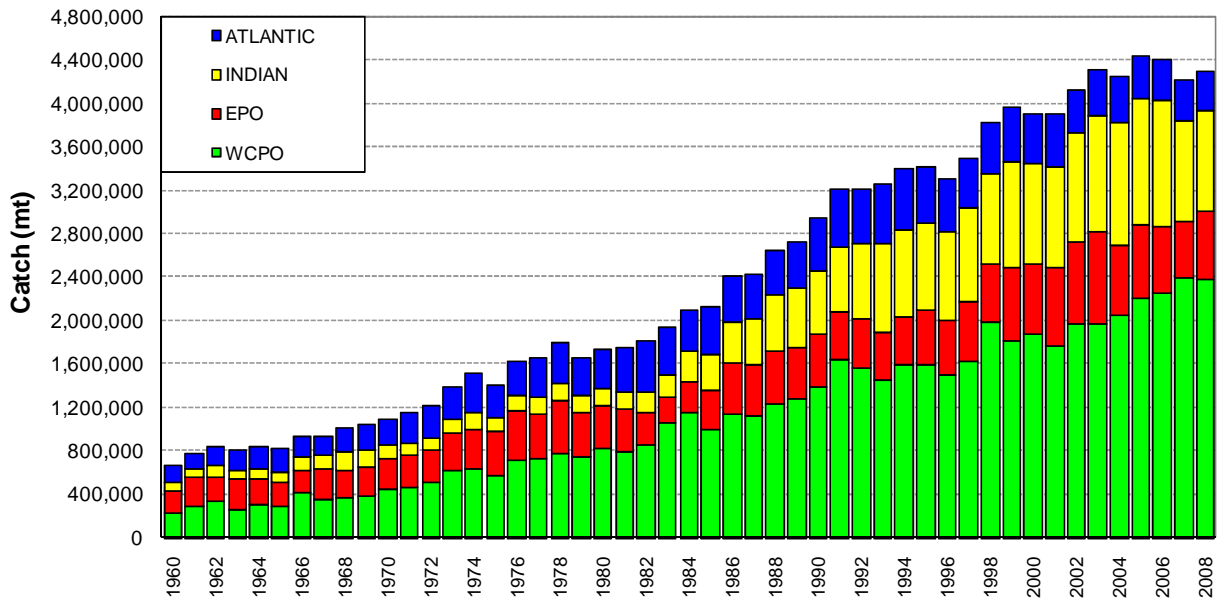


Figure 5. Global catches of tuna, by ocean area

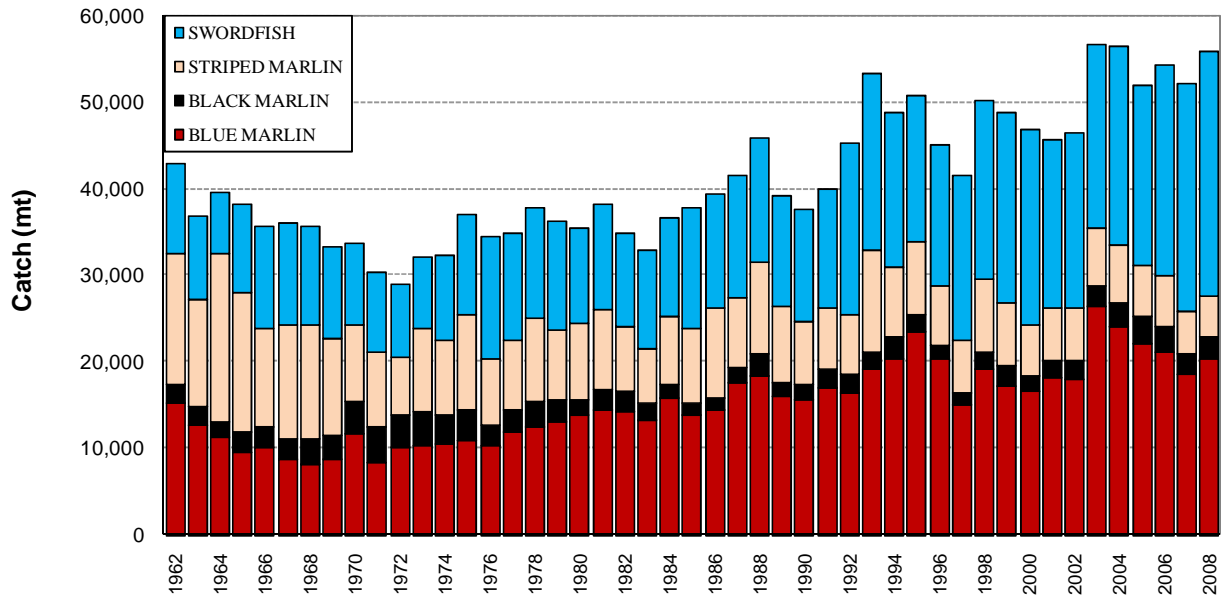


Figure 6. Commercial catches of major billfish species in the WCPFC Statistical Area

Table 1. Catches of target tunas in the WCPFC Statistical Area, by species

YEAR	ALBACORE		BIGEYE		SKIPJACK		YELLOWFIN		TOTAL
	TONNES	%	TONNES	%	TONNES	%	TONNES	%	
1960	31,463	13	45,025	19	89,938	37	73,667	31	240,093
1961	32,922	11	39,380	13	156,736	51	75,438	25	304,476
1962	37,602	11	36,868	11	181,624	53	83,944	25	340,038
1963	26,815	10	44,346	16	122,703	46	75,756	28	269,620
1964	26,687	8	32,391	10	182,918	58	74,154	23	316,150
1965	28,735	10	31,333	11	155,221	54	73,635	25	288,924
1966	52,284	12	33,187	8	249,514	58	93,099	22	428,084
1967	58,822	16	36,748	10	204,831	55	68,939	19	369,340
1968	64,213	17	30,416	8	194,978	52	81,967	22	371,574
1969	72,106	19	34,356	9	195,469	51	84,810	22	386,741
1970	74,350	16	40,082	9	242,230	53	96,691	21	453,353
1971	100,737	21	43,223	9	228,618	48	102,665	22	475,243
1972	109,655	21	57,164	11	237,818	46	116,148	22	520,785
1973	131,149	21	48,966	8	328,784	52	128,375	20	637,274
1974	115,162	18	52,800	8	356,484	54	131,269	20	655,715
1975	84,651	15	69,088	12	288,788	49	141,185	24	583,712
1976	132,947	18	82,183	11	358,389	49	152,498	21	726,017
1977	83,171	11	82,622	11	405,040	54	183,272	24	754,105
1978	111,161	14	64,956	8	452,387	56	175,847	22	804,351
1979	86,007	11	72,890	9	414,303	54	198,420	26	771,620
1980	95,156	11	70,437	8	459,608	55	215,650	26	840,851
1981	88,095	11	57,605	7	438,261	54	227,479	28	811,440
1982	89,496	10	61,983	7	490,244	57	222,038	26	863,761
1983	65,988	6	63,754	6	683,685	64	259,685	24	1,073,112
1984	74,540	6	70,140	6	762,093	65	259,092	22	1,165,865
1985	77,060	8	74,881	7	603,632	59	261,843	26	1,017,416
1986	71,757	6	72,840	6	755,407	66	253,128	22	1,153,132
1987	63,645	6	87,954	8	687,889	60	306,333	27	1,145,821
1988	67,948	5	86,034	7	849,161	67	267,706	21	1,270,849
1989	73,533	6	87,380	7	823,473	63	317,251	24	1,301,637
1990	63,872	5	100,452	7	890,150	63	357,984	25	1,412,458
1991	58,322	4	85,926	5	1,117,849	67	399,709	24	1,661,806
1992	74,452	5	103,011	6	1,014,574	64	404,316	25	1,596,353
1993	77,496	5	87,887	6	916,475	62	389,406	26	1,471,264
1994	96,461	6	100,522	6	1,019,372	63	400,961	25	1,617,316
1995	91,742	6	92,187	6	1,051,640	65	384,983	24	1,620,552
1996	91,140	6	91,904	6	1,022,298	67	321,964	21	1,527,306
1997	112,900	7	120,702	7	964,913	59	440,971	27	1,639,486
1998	112,465	6	122,240	6	1,310,501	65	462,786	23	2,007,992
1999	131,066	7	122,185	7	1,176,069	64	402,680	22	1,832,000
2000	101,161	5	124,445	7	1,243,471	65	430,409	23	1,899,486
2001	121,550	7	116,704	6	1,138,680	63	427,201	24	1,804,135
2002	147,782	7	131,045	7	1,313,361	66	409,836	20	2,002,024
2003	122,938	6	118,809	6	1,316,159	66	442,446	22	2,000,352
2004	121,393	6	157,173	8	1,427,664	68	378,865	18	2,085,095
2005	101,493	5	141,605	6	1,539,586	69	438,650	20	2,221,334
2006	103,972	5	146,313	6	1,592,338	70	433,893	19	2,276,516
2007	125,743	5	147,092	6	1,708,605	71	438,642	18	2,420,082
2008	95,043	4	157,054	6	1,634,617	67	539,481	22	2,426,195

Table 2. Catches of target tunas in the WCPFC Statistical Area, by gear type

YEAR	LONGLINE		POLE-AND-LINE		PURSESEINE		TROLL		OTHER		TOTAL
	TONNES	%	TONNES	%	TONNES	%	TONNES	%	TONNES	%	
1960	129,874	54	73,800	31	5,224	2	0	0	31,195	13	240,093
1961	123,330	41	132,070	43	14,540	5	0	0	34,536	11	304,476
1962	128,804	38	157,412	46	18,875	6	0	0	34,947	10	340,038
1963	122,263	45	98,628	37	11,934	4	0	0	36,795	14	269,620
1964	102,481	32	143,323	45	29,012	9	0	0	41,334	13	316,150
1965	103,955	36	134,621	47	8,621	3	0	0	41,727	14	288,924
1966	145,278	34	218,900	51	16,913	4	0	0	46,993	11	428,084
1967	128,047	35	174,774	47	14,508	4	5	0	52,006	14	369,340
1968	120,136	32	183,954	50	15,143	4	14	0	52,327	14	371,574
1969	122,806	32	196,749	51	9,483	2	0	0	57,703	15	386,741
1970	141,360	31	226,088	50	16,222	4	50	0	69,633	15	453,353
1971	143,625	30	238,182	50	24,511	5	0	0	68,925	15	475,243
1972	161,533	31	242,745	47	29,030	6	268	0	87,209	17	520,785
1973	166,399	26	330,841	52	36,269	6	484	0	103,281	16	637,274
1974	145,192	22	370,499	57	29,548	5	898	0	109,578	17	655,715
1975	164,049	28	279,663	48	27,685	5	646	0	111,669	19	583,712
1976	198,013	27	382,627	53	40,770	6	25	0	104,582	14	726,017
1977	218,413	29	345,257	46	53,492	7	621	0	136,322	18	754,105
1978	212,059	26	407,482	51	52,040	6	1,686	0	131,084	16	804,351
1979	211,221	27	344,799	45	90,102	12	814	0	124,684	16	771,620
1980	227,707	27	395,746	47	113,264	13	1,489	0	102,645	12	840,851
1981	188,516	23	343,584	42	153,907	19	2,118	0	123,315	15	811,440
1982	177,765	21	309,802	36	249,233	29	2,552	0	124,409	14	863,761
1983	170,385	16	338,181	32	436,509	41	949	0	127,088	12	1,073,112
1984	157,072	13	422,512	36	456,467	39	3,124	0	126,690	11	1,165,865
1985	172,886	17	293,206	29	403,252	40	3,468	0	144,604	14	1,017,416
1986	163,964	14	368,730	32	464,460	40	2,284	0	153,694	13	1,153,132
1987	180,581	16	297,935	26	531,142	46	2,350	0	133,813	12	1,145,821
1988	200,281	16	324,805	26	592,611	47	4,671	0	148,481	12	1,270,849
1989	164,878	13	317,802	24	646,441	50	8,687	1	163,829	13	1,301,637
1990	184,185	13	250,390	18	773,730	55	7,219	1	196,934	14	1,412,458
1991	157,518	9	314,979	19	993,149	60	8,004	0	188,156	11	1,661,806
1992	193,757	12	282,598	18	966,314	61	6,844	0	146,840	9	1,596,353
1993	188,514	13	307,966	21	845,646	57	4,612	0	124,526	8	1,471,264
1994	214,641	13	271,071	17	977,650	60	7,493	0	146,461	9	1,617,316
1995	210,605	13	297,106	18	938,748	58	23,577	1	150,516	9	1,620,552
1996	200,802	13	251,053	16	897,123	59	17,807	1	160,521	11	1,527,306
1997	217,166	13	273,844	17	980,797	60	18,732	1	148,947	9	1,639,486
1998	237,803	12	282,965	14	1,296,103	65	19,099	1	172,022	9	2,007,992
1999	207,209	11	302,239	16	1,130,946	62	13,476	1	178,130	10	1,832,000
2000	226,416	12	261,937	14	1,189,731	63	25,845	1	195,557	10	1,899,486
2001	243,183	13	207,307	11	1,164,238	65	17,332	1	172,075	10	1,804,135
2002	261,629	13	216,945	11	1,315,645	66	16,121	1	191,684	10	2,002,024
2003	241,556	12	221,676	11	1,309,657	65	20,490	1	206,973	10	2,000,352
2004	262,584	13	203,903	10	1,420,387	68	24,207	1	174,014	8	2,085,095
2005	234,909	11	213,054	10	1,582,689	71	15,204	1	175,478	8	2,221,334
2006	248,550	11	190,767	8	1,637,169	72	10,133	0	189,897	8	2,276,516
2007	235,612	10	191,457	8	1,760,737	73	8,176	0	224,100	9	2,420,082
2008	231,003	10	170,805	7	1,783,669	74	9,446	0	231,272	10	2,426,195

Table 3. Catches of target tunas in the WCPFC Statistical Area, by flag

YEAR	AUSTRALIA	BELIZE	CANADA	CHINA	COOK ISLANDS	ECUADOR	EL SALVADOR	FEDERATED STATES OF MICRONESIA
1960	-	-	-	-	-	-	-	-
1961	-	-	-	-	-	-	-	-
1962	-	-	-	-	-	-	-	-
1963	-	-	-	-	-	-	-	-
1964	-	-	-	-	-	-	-	-
1965	-	-	-	-	-	-	-	-
1966	-	-	-	-	-	-	-	-
1967	-	-	-	-	-	-	-	-
1968	-	-	-	-	-	-	-	-
1969	-	-	-	-	-	-	-	-
1970	100	-	-	-	-	-	-	-
1971	100	-	-	-	-	-	-	-
1972	100	-	-	-	-	-	-	-
1973	100	-	-	-	-	-	-	-
1974	100	-	-	-	-	-	-	-
1975	2,000	-	-	-	-	-	-	-
1976	147	-	-	-	-	-	-	-
1977	131	-	-	-	-	-	-	-
1978	375	-	-	-	-	-	-	-
1979	100	-	-	-	-	-	-	-
1980	117	-	-	-	-	-	-	-
1981	357	-	-	-	-	-	-	-
1982	238	-	-	-	-	-	-	-
1983	230	-	-	-	-	-	-	-
1984	147	-	-	-	-	-	-	-
1985	18	-	-	-	-	-	-	-
1986	101	-	-	-	-	-	-	-
1987	1,455	-	-	-	-	-	-	-
1988	1,752	-	235	44	-	-	-	-
1989	2,836	-	235	144	-	-	-	-
1990	6,983	-	235	453	-	-	-	-
1991	9,380	-	235	1,007	-	-	-	11,338
1992	9,524	-	235	2,715	-	-	-	15,472
1993	7,212	-	235	6,419	-	-	-	16,908
1994	5,415	-	235	12,677	32	-	-	20,941
1995	6,288	54	235	10,586	55	-	-	6,759
1996	5,249	129	136	6,026	59	-	-	7,394
1997	7,550	77	149	3,664	-	-	-	8,254
1998	5,153	276	167	3,272	22	-	-	14,179
1999	7,551	211	253	7,515	56	-	-	10,881
2000	6,997	270	351	6,244	335	3,992	-	21,688
2001	5,279	7,143	206	9,947	206	1,057	599	17,646
2002	5,232	3,385	144	15,632	770	427	1,488	20,607
2003	5,809	2,697	-	42,210	2,462	1,562	74	30,829
2004	4,200	943	63	40,172	3,207	3,051	-	28,471
2005	3,095	1,056	72	61,534	3,125	5,193	-	28,302
2006	5,397	632	135	73,736	2,841	9,523	-	10,774
2007	4,735	595	27	69,796	2,625	9,187	6,025	15,440
2008	3,589	225	-	69,795	2,416	9,187	10,962	19,424

Table 3 continued

YEAR	FIJI ISLANDS	FRENCH POLYNESIA	INDONESIA	JAPAN	KIRIBATI	REPUBLIC OF KOREA	MARSHALL ISLANDS	MEXICO
1960	—	—	7,415	206,606	—	744	—	—
1961	—	—	8,054	269,191	—	385	—	—
1962	—	—	8,749	302,176	—	708	—	—
1963	—	—	9,505	228,717	—	1,955	—	—
1964	—	—	10,327	270,506	—	2,527	—	—
1965	—	—	11,223	232,844	—	7,078	—	—
1966	—	—	12,198	355,838	—	13,405	—	—
1967	—	—	13,260	281,568	—	14,469	—	—
1968	—	—	14,417	273,603	—	10,794	—	—
1969	—	—	15,677	284,815	—	17,077	—	—
1970	—	—	17,600	321,786	—	16,927	—	—
1971	—	—	18,100	316,397	—	16,541	—	—
1972	—	—	28,600	341,854	—	17,678	—	—
1973	—	—	32,500	418,048	—	25,938	—	—
1974	12	—	33,779	429,014	—	14,105	—	—
1975	11	—	34,378	358,037	—	29,343	—	—
1976	742	—	33,375	474,987	—	44,464	—	—
1977	1,711	—	37,235	459,318	—	43,722	—	—
1978	2,524	—	40,024	513,391	—	33,102	—	—
1979	3,494	696	50,973	466,434	—	41,915	—	—
1980	2,496	936	61,795	522,844	1,812	46,096	—	—
1981	5,836	1,001	68,809	460,646	2,376	33,310	—	—
1982	4,428	1,034	74,056	501,943	2,269	39,684	—	—
1983	3,741	836	84,532	554,560	3,406	37,589	—	468
1984	4,572	1,250	96,662	639,034	3,843	33,293	—	6,600
1985	3,946	836	101,905	511,605	2,531	44,292	—	—
1986	3,125	961	111,733	582,323	3,226	63,034	—	—
1987	3,889	878	124,175	504,820	2,246	91,201	—	—
1988	3,891	715	129,922	599,082	3,284	113,653	—	—
1989	5,189	856	145,320	517,619	4,094	139,904	—	—
1990	3,830	2,109	142,237	471,098	2,407	204,399	—	—
1991	5,298	2,335	168,844	490,676	2,036	247,950	—	—
1992	4,790	2,019	194,659	472,795	2,363	213,553	9	—
1993	4,966	2,387	173,969	516,859	2,104	150,165	137	—
1994	5,937	2,804	196,897	473,787	3,131	226,531	48	—
1995	7,009	3,343	204,837	480,681	5,423	206,176	22	—
1996	6,803	3,583	230,449	416,802	6,645	174,948	—	—
1997	4,354	4,564	211,816	507,235	7,020	188,667	—	—
1998	4,013	5,710	277,732	543,367	9,389	247,929	—	—
1999	4,075	5,200	296,242	481,852	9,793	173,490	—	—
2000	9,660	6,833	298,256	497,623	14,726	207,498	7,560	—
2001	11,309	7,736	264,852	439,304	5,401	216,691	35,774	—
2002	11,551	7,347	268,123	451,769	9,830	254,593	38,952	—
2003	10,854	6,309	251,591	469,787	6,898	221,079	37,875	—
2004	17,312	5,438	265,678	441,673	6,661	212,655	46,676	—
2005	11,974	5,041	280,422	483,579	9,165	237,353	56,164	—
2006	15,472	5,938	320,402	446,871	6,723	274,859	42,349	—
2007	10,042	6,458	322,170	464,684	18,020	278,482	59,409	—
2008	11,759	5,527	322,170	402,874	18,374	275,132	33,359	—

Table 3 continued

YEAR	NAURU	NEW CALEDONIA	NEW ZEALAND	NIUE	PALAU	PAPUA NEW GUINEA	PHILIPPINES	RUSSIA
1960	-	-	-	-	-	-	20,585	-
1961	-	-	-	-	-	-	21,735	-
1962	-	-	-	-	-	-	22,957	-
1963	-	-	-	-	-	-	24,252	-
1964	-	-	-	-	1,166	-	25,626	-
1965	-	-	-	-	2,670	-	27,084	-
1966	-	-	-	-	2,686	-	28,632	-
1967	-	-	5	-	3,406	-	30,275	-
1968	-	-	14	-	5,056	-	32,021	-
1969	-	-	-	-	4,762	-	33,875	-
1970	-	-	50	-	8,082	2,428	52,000	-
1971	-	-	-	-	2,143	16,974	57,200	-
1972	-	-	268	-	1,519	13,130	60,700	-
1973	-	-	484	-	2,350	28,216	70,900	-
1974	-	-	899	-	6,808	41,630	81,188	-
1975	-	-	647	-	6,269	17,369	84,450	-
1976	-	-	25	-	5,323	32,921	73,653	-
1977	-	-	621	-	4,012	24,115	118,149	-
1978	-	-	1,701	-	9,694	48,859	87,319	-
1979	-	-	830	-	5,688	26,857	94,308	-
1980	-	-	1,519	-	6,576	33,994	77,505	-
1981	-	229	2,111	-	9,411	31,412	94,616	-
1982	-	868	2,436	-	4,053	-	104,047	-
1983	-	461	6,565	-	-	-	118,529	-
1984	-	150	7,005	-	-	2,744	105,217	-
1985	-	281	5,713	-	97	9,300	137,308	2,111
1986	-	367	6,793	-	131	-	145,097	4,175
1987	-	1,102	5,035	-	161	-	141,461	8,995
1988	-	1,092	3,923	-	157	-	124,786	6,189
1989	-	871	10,323	-	77	-	151,124	4,935
1990	-	1,730	7,120	-	88	-	204,808	2,126
1991	-	1,536	7,765	-	-	-	224,530	3,715
1992	-	1,092	4,524	-	213	-	167,045	2,126
1993	-	1,294	4,415	-	206	8	135,882	8,714
1994	-	1,355	8,513	-	184	1,381	175,561	6,722
1995	-	1,274	8,147	-	100	12,700	202,176	-
1996	-	1,201	10,194	-	100	10,572	208,571	-
1997	-	977	10,451	-	107	19,400	212,483	-
1998	-	1,543	15,154	-	100	50,727	239,744	-
1999	-	1,616	10,141	-	100	38,980	230,555	-
2000	11	1,662	18,918	-	240	68,818	238,857	-
2001	13	1,718	17,533	-	62	92,806	214,779	-
2002	7	1,926	38,574	-	4	124,705	238,551	-
2003	20	2,007	30,614	-	20	159,622	297,662	-
2004	3	2,189	33,886	6	35	225,441	308,114	-
2005	-	2,114	27,917	105	-	235,439	312,984	-
2006	-	1,807	27,410	286	-	233,170	341,441	-
2007	-	1,770	38,969	192	-	230,015	389,016	-
2008	-	1,993	32,611	16	-	205,682	435,689	-

Table 3 continued

YEAR	SAMOA	SOLOMON ISLANDS	SPAIN	CHINESE TAIPEI	TONGA
1960	–	–	–	4,035	–
1961	–	–	–	4,485	–
1962	–	–	–	4,779	–
1963	–	–	–	4,642	–
1964	–	–	–	5,482	–
1965	–	–	–	7,524	–
1966	–	–	–	14,812	–
1967	–	–	–	25,911	–
1968	–	–	–	35,302	–
1969	–	–	–	30,096	–
1970	–	–	–	33,887	–
1971	–	4,711	–	42,640	–
1972	–	7,905	–	48,612	–
1973	–	6,624	–	51,807	–
1974	–	10,332	–	37,501	–
1975	–	7,094	–	43,804	–
1976	–	15,763	–	43,546	–
1977	–	12,202	–	50,858	–
1978	–	18,353	–	46,606	–
1979	–	24,289	–	43,450	–
1980	–	23,241	–	48,323	–
1981	–	22,832	–	37,900	–
1982	–	20,071	–	32,644	205
1983	–	33,432	–	44,458	208
1984	–	35,615	–	56,407	218
1985	–	29,997	–	55,987	233
1986	–	42,249	–	65,658	252
1987	–	29,437	–	84,558	299
1988	–	40,513	–	117,865	276
1989	–	34,262	–	135,125	235
1990	–	26,612	–	164,640	192
1991	–	46,888	–	213,007	197
1992	–	30,558	–	263,185	225
1993	300	28,006	–	207,231	329
1994	736	33,925	–	223,590	411
1995	2,151	49,665	–	228,798	461
1996	2,375	38,697	–	226,436	579
1997	5,498	47,442	–	217,026	663
1998	6,820	48,378	–	306,849	833
1999	5,790	45,662	8,613	252,529	1,084
2000	5,389	12,929	12,896	280,692	1,161
2001	5,864	17,217	2,402	285,928	1,733
2002	4,927	18,537	–	318,806	1,672
2003	2,944	26,364	–	258,052	971
2004	1,967	24,904	5,587	259,667	388
2005	1,626	20,023	3,453	245,233	629
2006	2,564	29,462	11,653	255,874	759
2007	3,559	21,244	20,538	276,458	861
2008	2,796	16,182	36,396	246,187	592

Table 3 continued

YEAR	TUVALU	UNITED STATES OF AMERICA	VANUATU	EASTERN PACIFIC NEI	TOTAL
1960	–	708	–	–	240,093
1961	–	626	–	–	304,476
1962	–	669	–	–	340,038
1963	–	549	–	–	269,620
1964	–	516	–	–	316,150
1965	–	501	–	–	288,924
1966	–	513	–	–	428,084
1967	–	446	–	–	369,340
1968	–	367	–	–	371,574
1969	–	439	–	–	386,741
1970	–	493	–	–	453,353
1971	–	437	–	–	475,243
1972	–	419	–	–	520,785
1973	–	307	–	–	637,274
1974	–	347	–	–	655,715
1975	–	310	–	–	583,712
1976	–	1,071	–	–	726,017
1977	–	1,359	–	672	754,105
1978	–	1,477	–	926	804,351
1979	–	11,852	–	734	771,620
1980	–	13,483	–	114	840,851
1981	–	40,496	–	98	811,440
1982	216	75,494	–	75	863,761
1983	337	181,593	–	2,167	1,073,112
1984	540	162,380	–	10,188	1,165,865
1985	4	110,031	–	1,221	1,017,416
1986	390	123,517	–	–	1,153,132
1987	632	145,072	–	405	1,145,821
1988	1,090	122,380	–	–	1,270,849
1989	149	148,339	–	–	1,301,637
1990	90	171,301	–	–	1,412,458
1991	29	225,040	–	–	1,661,806
1992	8	209,243	–	–	1,596,353
1993	–	203,518	–	–	1,471,264
1994	–	215,683	820	–	1,617,316
1995	–	176,125	7,276	211	1,620,552
1996	–	158,219	11,497	642	1,527,306
1997	–	154,149	26,164	1,776	1,639,486
1998	–	184,278	39,423	2,934	2,007,992
1999	–	191,739	46,162	1,910	1,832,000
2000	–	135,410	37,545	2,925	1,899,486
2001	–	128,503	11,917	510	1,804,135
2002	–	136,190	28,031	244	2,002,024
2003	–	100,997	28,443	2,600	2,000,352
2004	–	79,385	65,309	2,014	2,085,095
2005	–	97,771	87,256	709	2,221,334
2006	–	81,158	74,571	709	2,276,516
2007	–	87,159	81,897	709	2,420,082
2008	–	216,764	45,785	709	2,426,195

Table 4. Catches of albacore in the Pacific Ocean.

YEAR	SOUTH PACIFIC OCEAN					NORTH PACIFIC OCEAN					TOTAL
	LONGLINE	POLE-AND-LINE	TROLL	OTHER	SUBTOTAL	LONGLINE	POLE-AND-LINE	TROLL	OTHER	SUBTOTAL	
1960	22,248	45	0	0	22,293	17,384	25,156	20,105	769	63,414	85,707
1961	23,742	0	0	0	23,742	17,490	21,476	12,059	1,631	52,656	76,398
1962	35,219	0	0	0	35,219	15,850	9,814	19,753	1,926	47,343	82,562
1963	31,095	16	0	0	31,111	13,639	28,852	25,145	1,438	69,074	100,185
1964	22,824	0	0	0	22,824	15,659	27,269	18,391	1,271	62,590	85,414
1965	25,455	0	0	0	25,455	14,226	41,908	16,557	863	73,554	99,009
1966	38,661	0	0	0	38,661	25,600	24,430	15,377	1,285	66,692	105,353
1967	43,952	0	5	0	43,957	29,821	34,594	17,975	1,316	83,706	127,663
1968	32,368	0	14	0	32,382	25,152	21,503	21,462	2,327	70,444	102,826
1969	24,805	0	0	0	24,805	19,223	34,908	20,192	1,838	76,161	100,966
1970	34,775	100	50	0	34,925	19,229	28,679	21,422	1,656	70,986	105,911
1971	38,530	100	0	0	38,630	14,982	55,028	22,272	2,436	94,718	133,348
1972	39,131	122	268	0	39,521	19,025	64,319	27,521	1,659	112,524	152,045
1973	46,705	141	484	0	47,330	17,030	71,003	17,053	2,006	107,092	154,422
1974	33,039	112	898	0	34,049	14,047	78,341	21,509	1,384	115,281	149,330
1975	22,849	105	646	0	23,600	14,547	55,395	19,043	1,219	90,204	113,804
1976	28,957	100	25	0	29,082	18,510	88,036	16,183	3,217	125,946	155,028
1977	38,019	100	621	0	38,740	17,684	33,431	10,022	2,264	63,401	102,141
1978	32,890	100	1,686	0	34,676	13,851	60,827	16,636	8,064	99,378	134,054
1979	26,162	100	814	0	27,076	14,738	44,965	7,302	4,211	71,216	98,292
1980	30,972	101	1,468	0	32,541	15,635	47,124	7,768	4,707	75,234	107,775
1981	32,694	0	2,085	5	34,784	18,864	28,174	12,837	11,526	71,401	106,185
1982	28,347	1	2,434	6	30,788	18,275	30,039	6,713	13,963	68,990	99,778
1983	24,309	0	744	39	25,092	16,586	21,705	9,584	7,676	55,551	80,643
1984	20,340	2	2,773	1,589	24,704	16,133	27,043	9,354	18,670	71,200	95,904
1985	27,138	0	3,253	1,937	32,328	14,781	22,212	6,471	14,947	58,411	90,739
1986	32,641	0	2,003	1,946	36,590	13,140	16,528	4,738	10,938	45,344	81,934
1987	21,979	9	2,134	930	25,052	15,411	19,240	2,870	11,509	49,030	74,082
1988	28,288	0	4,296	5,283	37,867	15,601	6,814	4,367	18,968	45,750	83,617
1989	18,738	0	8,370	21,968	49,076	14,536	8,683	2,000	19,986	45,205	94,281
1990	19,368	245	6,975	7,538	34,126	16,608	8,647	2,905	26,159	54,319	88,445
1991	23,385	14	7,805	1,489	32,693	18,049	7,103	1,984	10,798	37,934	70,627
1992	30,592	11	6,578	65	37,246	19,991	13,888	4,934	16,580	55,393	92,639
1993	30,229	74	4,296	70	34,669	31,144	12,797	6,748	4,112	54,801	89,470
1994	34,118	67	7,164	89	41,438	30,826	26,389	13,134	3,486	73,835	115,273
1995	29,332	139	7,716	104	37,291	32,957	21,061	10,758	1,725	66,501	103,792
1996	23,816	30	7,379	156	31,381	39,384	20,296	21,849	1,070	82,599	113,980
1997	27,103	21	4,679	133	31,936	48,366	32,311	18,674	2,736	102,087	134,023
1998	37,791	36	6,280	85	44,192	48,056	23,005	20,074	3,237	94,372	138,564
1999	31,909	138	3,419	74	35,540	46,768	50,429	13,853	11,155	122,205	157,745
2000	33,968	102	6,269	139	40,478	41,966	21,619	15,245	4,985	83,815	124,293
2001	48,638	37	5,142	199	54,016	37,125	29,569	16,738	3,002	86,434	140,450
2002	60,590	18	4,574	150	65,332	33,359	48,832	16,323	6,219	104,733	170,065
2003	56,769	12	5,612	130	62,523	32,476	36,173	21,886	3,184	93,719	156,242
2004	57,787	110	4,531	116	62,544	29,284	32,380	22,255	8,977	92,896	155,440
2005	57,597	28	3,451	129	61,205	32,432	16,199	14,067	3,183	65,881	127,086
2006	62,698	29	2,883	188	65,798	33,247	15,423	18,931	1,137	68,738	134,536
2007	57,028	20	2,082	50	59,180	31,515	37,789	18,670	6,438	94,412	153,592
2008	48,149	20	3,497	6	51,672	30,927	18,583	17,560	6,435	73,505	125,177

Table 5. Catches of bigeye in the Pacific Ocean.

YEAR	WESTERN AND CENTRAL PACIFIC OCEAN					EASTERN PACIFIC OCEAN					TOTAL
	LONGLINE	POLE-AND-LINE	PURSE SEINE	OTHER	SUBTOTAL	LONGLINE	POLE-AND-LINE	PURSE SEINE	OTHER	SUBTOTAL	
1960	43,467	1,500	58	0	45,025	17,722	0	24	0	17,746	62,771
1961	37,517	1,800	63	0	39,380	52,431	106	105	0	52,642	92,022
1962	35,895	800	173	0	36,868	45,050	318	302	0	45,670	82,538
1963	42,540	1,800	6	0	44,346	66,617	140	0	0	66,757	111,103
1964	30,978	1,143	231	28	32,380	46,279	127	0	0	46,406	78,786
1965	29,844	1,254	201	30	31,329	29,164	231	0	0	29,395	60,724
1966	31,949	1,108	9	86	33,152	34,800	292	210	0	35,302	68,454
1967	32,791	2,803	60	253	35,907	35,878	1,305	1,697	0	38,880	74,787
1968	27,199	2,272	183	204	29,858	35,233	115	4,618	0	39,966	69,824
1969	32,371	1,675	48	62	34,156	52,071	0	1,093	0	53,164	87,320
1970	34,348	1,589	726	2,802	39,465	33,341	0	2,411	0	35,752	75,217
1971	36,798	931	876	3,057	41,662	29,804	75	4,359	18	34,256	75,918
1972	49,334	1,762	865	3,497	55,458	36,128	126	3,971	0	40,225	95,683
1973	40,285	1,258	1,078	4,218	46,839	50,777	236	3,342	0	54,355	101,194
1974	41,787	1,039	1,389	4,719	48,934	36,961	0	1,554	0	38,515	87,449
1975	57,623	1,334	1,328	4,938	65,223	41,733	36	6,574	0	48,343	113,566
1976	68,514	3,423	1,312	4,123	77,372	54,290	75	17,212	7	71,584	148,956
1977	66,249	3,325	1,587	5,627	76,788	74,086	2	11,161	0	85,249	162,037
1978	50,375	3,337	1,151	4,231	59,094	70,659	0	18,539	0	89,198	148,292
1979	57,186	2,540	2,031	4,615	66,372	55,435	0	12,097	1	67,533	133,905
1980	56,553	2,278	2,160	4,142	65,133	64,335	0	21,938	130	86,403	151,536
1981	41,564	2,596	4,268	4,918	53,346	53,416	0	14,921	7	68,344	121,690
1982	45,204	4,108	5,251	4,738	59,301	53,365	42	6,939	3	60,349	119,650
1983	41,412	4,055	9,442	4,987	59,896	60,043	39	4,575	37	64,694	124,590
1984	46,429	3,465	9,615	5,171	64,680	46,394	2	8,861	11	55,268	119,948
1985	51,326	4,326	6,944	6,110	68,706	66,325	2	6,056	15	72,398	141,104
1986	46,741	2,865	7,712	6,459	63,777	102,425	0	2,686	74	105,185	168,962
1987	59,357	3,134	11,215	5,563	79,269	100,121	0	1,177	49	101,347	180,616
1988	49,663	4,125	8,220	6,439	68,447	72,758	5	1,535	15	74,313	142,760
1989	53,173	4,298	12,629	7,137	77,237	70,963	0	2,030	1	72,994	150,231
1990	65,239	3,918	12,411	8,850	90,418	98,871	0	5,921	59	104,851	195,269
1991	47,244	1,991	13,750	10,782	73,767	104,195	31	4,870	25	109,121	182,888
1992	61,971	1,757	19,151	8,183	91,062	84,808	0	7,179	13	92,000	183,062
1993	56,366	2,331	13,929	7,042	79,668	72,498	0	9,657	35	82,190	161,858
1994	66,104	2,951	10,630	9,987	89,672	71,360	0	34,899	806	107,065	196,737
1995	56,489	3,776	11,862	10,755	82,882	58,269	0	45,321	1,369	104,959	187,841
1996	46,054	3,864	21,791	12,075	83,784	46,958	0	61,311	748	109,017	192,801
1997	58,461	3,611	41,628	9,643	113,343	52,580	0	64,272	20	116,872	230,215
1998	72,696	2,446	27,131	11,342	113,615	46,375	0	44,129	628	91,132	204,747
1999	65,181	2,176	36,973	11,523	115,853	36,450	0	51,158	538	88,146	203,999
2000	59,837	2,988	37,775	12,884	113,484	47,605	0	94,640	253	142,498	255,982
2001	62,002	2,349	28,775	11,719	104,845	68,755	0	61,156	19	129,930	234,775
2002	78,759	2,805	26,351	13,218	121,133	74,424	0	57,440	12	131,876	253,009
2003	70,280	1,778	26,076	13,247	111,381	59,776	0	54,174	21	113,971	225,352
2004	86,758	9,313	29,937	20,220	146,228	43,483	0	67,592	194	111,269	257,497
2005	72,388	6,757	38,245	17,654	135,044	41,432	0	69,826	25	111,283	246,327
2006	79,364	10,813	38,729	12,907	141,813	33,927	0	83,978	40	117,945	259,758
2007	79,693	8,967	41,999	13,558	144,217	30,905	0	63,074	44	94,023	238,240
2008	79,063	8,930	42,782	13,487	144,262	19,305	0	75,653	44	95,002	239,264

Table 6. Catches of skipjack in the Pacific Ocean

YEAR	WESTERN AND CENTRAL PACIFIC OCEAN					EASTERN PACIFIC OCEAN					TOTAL
	LONGLINE	POLE-AND-LINE	PURSE SEINE	OTHER	SUBTOTAL	LONGLINE	POLE-AND-LINE	PURSE SEINE	OTHER	SUBTOTAL	
1960	0	70,428	3,728	15,782	89,938	0	28,929	16,649	481	46,059	135,997
1961	0	127,011	11,693	18,032	156,736	0	28,995	45,706	428	75,129	231,865
1962	4	152,387	11,674	17,559	181,624	0	17,660	58,939	503	77,102	258,726
1963	0	94,757	9,592	18,354	122,703	0	17,138	82,404	2,389	101,931	224,634
1964	5	137,106	25,006	20,801	182,918	0	10,306	51,759	3,609	65,674	248,592
1965	11	129,933	4,657	20,620	155,221	0	19,867	64,056	1,046	84,969	240,190
1966	50	215,600	10,949	22,913	249,512	0	14,083	50,264	1,960	66,307	315,819
1967	101	168,846	10,931	24,930	204,808	0	18,016	104,928	5,038	127,982	332,790
1968	60	162,379	7,587	24,929	194,955	0	7,340	59,642	10,128	77,110	272,065
1969	124	160,212	5,057	30,070	195,463	0	6,970	46,020	11,904	64,894	260,357
1970	1,260	197,873	10,585	32,164	241,882	0	7,470	47,466	7,234	62,170	304,052
1971	1,440	180,945	17,034	29,164	228,583	0	11,679	94,502	6,702	112,883	341,466
1972	1,524	172,827	21,664	41,783	237,798	0	6,556	29,804	1,144	37,504	275,302
1973	1,838	253,217	23,299	50,407	328,761	0	9,135	39,247	638	49,020	377,781
1974	2,088	289,202	15,630	49,528	356,448	0	7,629	79,418	510	87,557	444,005
1975	1,893	218,271	18,409	50,189	288,762	0	13,848	120,358	526	134,732	423,494
1976	2,056	276,582	28,495	51,216	358,349	0	11,256	124,957	705	136,918	495,267
1977	3,107	294,641	40,797	66,475	405,020	0	7,522	84,603	1,960	94,085	499,105
1978	3,219	331,401	44,109	73,644	452,373	0	6,047	172,294	1,324	179,665	632,038
1979	2,175	285,859	65,825	60,440	414,299	0	6,346	133,695	1,462	141,503	555,802
1980	630	333,457	82,700	42,819	459,606	0	5,225	130,912	1,965	138,102	597,708
1981	754	294,292	94,987	48,226	438,259	0	5,906	119,165	930	126,001	564,260
1982	1,013	262,244	173,901	53,084	490,242	0	3,760	100,499	410	104,669	594,911
1983	2,143	299,762	324,900	56,879	683,684	0	4,387	56,851	737	61,975	745,659
1984	867	379,474	337,471	44,278	762,090	0	2,884	59,859	868	63,611	825,701
1985	1,100	250,010	308,957	43,557	603,624	0	946	50,829	227	52,002	655,626
1986	1,434	336,695	368,138	49,135	755,402	0	1,921	65,634	190	67,745	823,147
1987	2,320	262,467	375,265	47,828	687,880	0	2,233	64,019	214	66,466	754,346
1988	1,930	301,031	497,052	49,141	849,154	0	4,325	87,113	689	92,127	941,281
1989	2,502	289,706	482,785	48,475	823,468	0	2,940	94,934	1,047	98,921	922,389
1990	1,290	224,592	603,347	60,916	890,145	0	823	74,369	1,915	77,107	967,252
1991	1,539	292,950	777,350	46,007	1,117,846	0	1,717	62,228	1,945	65,890	1,183,736
1992	1,148	251,717	725,134	36,574	1,014,573	0	1,957	84,283	1,054	87,294	1,101,867
1993	1,032	280,066	609,304	26,069	916,471	0	3,772	83,830	2,317	89,919	1,006,390
1994	2,288	227,921	756,558	32,579	1,019,346	0	3,240	70,126	804	74,170	1,093,516
1995	2,649	257,147	750,101	41,717	1,051,614	0	5,253	127,047	1,988	134,288	1,185,902
1996	5,947	211,408	769,438	35,444	1,022,237	0	2,555	103,973	1,313	107,841	1,130,078
1997	5,980	225,612	691,226	41,957	964,775	0	3,260	153,456	231	156,947	1,121,722
1998	7,043	244,447	1,015,686	43,199	1,310,375	0	1,684	140,631	531	142,846	1,453,221
1999	6,002	235,739	893,652	40,532	1,175,925	0	2,044	261,565	1,594	265,203	1,441,128
2000	6,541	223,552	959,220	54,115	1,243,428	68	231	204,307	67	204,673	1,448,101
2001	6,928	163,328	929,064	39,337	1,138,657	1,214	448	143,561	34	145,257	1,283,914
2002	5,312	152,311	1,115,045	40,619	1,313,287	261	616	153,303	119	154,299	1,467,586
2003	6,124	171,796	1,088,905	49,204	1,316,029	634	638	274,529	2,777	278,578	1,594,607
2004	6,361	147,276	1,218,143	55,554	1,427,334	713	528	198,664	1,105	201,010	1,628,344
2005	3,538	175,247	1,301,073	59,687	1,539,545	231	1,300	261,780	1,780	265,091	1,804,636
2006	4,206	145,869	1,377,322	61,269	1,588,666	224	435	297,408	986	299,053	1,887,719
2007	4,289	127,300	1,498,855	76,879	1,707,323	107	276	208,290	787	209,460	1,916,783
2008	4,007	124,867	1,415,756	77,146	1,621,776	107	499	295,530	787	296,923	1,918,699

Table 7. Catches of yellowfin in the Pacific Ocean

YEAR	WESTERN AND CENTRAL PACIFIC OCEAN					EASTERN PACIFIC OCEAN					TOTAL
	LONGLINE	POLE-AND-LINE	PURSE SEINE	OTHER	SUBTOTAL	LONGLINE	POLE-AND-LINE	PURSE SEINE	OTHER	SUBTOTAL	
1960	55,020	1,872	1,438	15,337	73,667	5,934	22,151	79,425	458	107,968	181,635
1961	53,166	3,259	2,777	16,236	75,438	12,500	15,220	80,058	949	108,727	184,165
1962	55,547	4,225	6,975	17,197	83,944	10,211	11,052	56,271	706	78,240	162,184
1963	53,185	2,071	2,277	18,223	75,756	18,973	7,041	48,004	688	74,706	150,462
1964	45,241	5,074	3,647	20,186	74,148	16,975	3,989	78,318	738	100,020	174,168
1965	45,487	3,434	3,752	20,956	73,629	15,620	6,983	65,348	312	88,263	161,892
1966	61,623	2,192	5,844	23,409	93,068	9,097	5,302	68,982	507	83,888	176,956
1967	35,720	3,125	3,428	26,303	68,576	9,285	4,512	65,442	1,534	80,773	149,349
1968	45,572	2,706	7,106	26,085	81,469	14,986	4,307	86,542	3,241	109,076	190,545
1969	51,372	2,714	3,857	26,612	84,555	15,329	7,195	113,665	1,866	138,055	222,610
1970	55,481	2,141	9,322	29,422	96,366	12,643	4,260	139,385	4,850	161,138	257,504
1971	56,927	2,855	10,840	31,204	101,826	8,013	5,300	104,863	2,482	120,658	222,484
1972	60,251	7,465	11,759	35,749	115,224	16,859	6,060	164,297	1,060	188,276	303,500
1973	61,818	7,458	16,900	41,726	127,902	11,697	3,933	194,200	661	210,491	338,393
1974	57,490	6,582	19,574	46,997	130,643	7,190	8,188	191,626	1,230	208,234	338,877
1975	68,416	7,801	15,386	48,536	140,139	10,640	5,629	183,028	567	199,864	340,003
1976	76,363	17,186	17,076	40,666	151,291	15,632	3,280	215,108	358	234,378	385,669
1977	92,680	15,257	18,509	55,092	181,538	12,355	1,841	184,922	248	199,366	380,904
1978	108,555	12,767	14,260	38,491	174,073	10,188	3,888	158,801	1,103	173,980	348,053
1979	105,065	11,638	31,364	46,375	194,442	11,473	4,789	170,650	212	187,124	381,566
1980	120,373	13,168	35,701	43,906	213,148	13,477	1,481	143,042	862	158,862	372,010
1981	93,125	19,270	62,922	50,622	225,939	7,999	1,477	168,234	800	178,510	404,449
1982	84,014	13,835	74,989	48,226	221,064	10,961	1,538	114,755	280	127,534	348,598
1983	83,662	13,266	109,388	50,844	257,160	10,895	4,007	83,929	849	99,680	356,840
1984	70,258	13,558	118,800	53,698	256,314	10,345	2,991	135,785	344	149,465	405,779
1985	73,966	18,156	106,331	61,091	259,544	13,198	1,070	211,459	212	225,939	485,483
1986	62,614	13,074	110,362	64,673	250,723	22,808	2,537	260,512	214	286,071	536,794
1987	74,092	13,243	158,246	58,032	303,613	18,911	5,107	262,008	138	286,164	589,777
1988	84,802	13,433	99,169	65,704	263,108	14,660	3,723	277,293	752	296,428	559,536
1989	65,523	15,169	163,307	69,867	313,866	17,032	4,145	277,996	263	299,436	613,302
1990	71,024	13,103	179,195	90,238	353,560	34,633	2,676	263,253	960	301,522	655,082
1991	56,169	12,921	218,927	106,746	394,763	30,899	2,856	231,257	958	265,970	660,733
1992	69,828	15,225	239,362	76,591	401,006	18,646	3,789	228,121	1,958	252,514	653,520
1993	64,031	12,698	240,311	69,686	386,726	24,009	4,951	219,492	3,034	251,486	638,212
1994	70,440	13,743	218,335	93,138	395,656	30,026	3,625	208,408	1,487	243,546	639,202
1995	78,653	15,063	187,069	101,102	381,887	20,596	1,268	215,434	2,066	239,364	621,251
1996	75,399	15,479	116,789	110,664	318,331	16,608	3,762	238,607	1,639	260,616	578,947
1997	69,591	12,362	258,765	97,257	437,975	22,163	4,418	244,878	600	272,059	710,034
1998	64,325	13,110	264,857	115,547	457,839	15,336	5,085	253,959	1,529	275,909	733,748
1999	58,234	13,817	206,791	121,354	400,196	11,682	1,783	281,920	2,706	298,091	698,287
2000	73,528	13,745	203,952	133,249	424,474	23,855	2,431	255,231	1,109	282,626	707,100
2001	71,618	12,163	218,091	119,586	421,458	29,608	3,916	382,702	520	416,746	838,204
2002	73,145	13,357	185,001	133,787	405,290	25,531	950	412,507	549	439,537	844,827
2003	75,241	11,976	211,841	139,816	438,874	25,174	470	381,107	1,145	407,896	846,770
2004	80,054	14,949	183,377	98,253	376,633	18,779	1,884	269,597	627	290,887	667,520
2005	69,123	14,889	261,199	89,706	434,917	11,895	1,821	267,599	1,852	283,167	718,084
2006	71,127	18,036	237,688	100,580	427,431	8,706	686	166,330	1,458	177,180	604,611
2007	66,862	17,002	237,544	114,081	435,489	7,922	894	170,264	1,267	180,347	615,836
2008	68,217	16,845	334,145	118,395	537,602	7,922	812	185,846	1,267	195,847	733,449

Table 8. Catches of albacore, bigeye, skipjack and yellowfin in the WCPO

YEAR	ALBACORE		BIGEYE		SKIPJACK		YELLOWFIN		TOTAL
	TONNES	%	TONNES	%	TONNES	%	TONNES	%	
1960	31,463	13	45,025	19	89,938	37	73,667	31	240,093
1961	32,922	11	39,380	13	156,736	51	75,438	25	304,476
1962	37,602	11	36,868	11	181,624	53	83,944	25	340,038
1963	26,815	10	44,346	16	122,703	46	75,756	28	269,620
1964	26,652	8	32,380	10	182,918	58	74,148	23	316,098
1965	28,724	10	31,329	11	155,221	54	73,629	25	288,903
1966	52,180	12	33,152	8	249,512	58	93,068	22	427,912
1967	55,403	15	35,907	10	204,808	56	68,576	19	364,694
1968	61,379	17	29,858	8	194,955	53	81,469	22	367,661
1969	71,137	18	34,156	9	195,463	51	84,555	22	385,311
1970	71,496	16	39,465	9	241,882	54	96,366	21	449,209
1971	96,125	21	41,662	9	228,583	49	101,826	22	468,196
1972	106,697	21	55,458	11	237,798	46	115,224	22	515,177
1973	129,538	20	46,839	7	328,761	52	127,902	20	633,040
1974	112,827	17	48,934	8	356,448	55	130,643	20	648,852
1975	83,864	15	65,223	11	288,762	50	140,139	24	577,988
1976	131,620	18	77,372	11	358,349	50	151,291	21	718,632
1977	79,436	11	76,788	10	405,020	55	181,538	24	742,782
1978	105,771	13	59,094	7	452,373	57	174,073	22	791,311
1979	84,878	11	66,372	9	414,299	55	194,442	26	759,991
1980	94,123	11	65,133	8	459,606	55	213,148	26	832,010
1981	86,385	11	53,346	7	438,259	55	225,939	28	803,929
1982	86,847	10	59,301	7	490,242	57	221,064	26	857,454
1983	64,112	6	59,896	6	683,684	64	257,160	24	1,064,852
1984	73,452	6	64,680	6	762,090	66	256,314	22	1,156,536
1985	76,034	8	68,706	7	603,624	60	259,544	26	1,007,908
1986	71,045	6	63,777	6	755,402	66	250,723	22	1,140,947
1987	60,625	5	79,269	7	687,880	61	303,613	27	1,131,387
1988	62,279	5	68,447	6	849,154	68	263,108	21	1,242,988
1989	69,949	5	77,237	6	823,468	64	313,866	24	1,284,520
1990	61,043	4	90,418	6	890,145	64	353,560	25	1,395,166
1991	56,509	3	73,767	4	1,117,846	68	394,763	24	1,642,885
1992	62,521	4	91,062	6	1,014,573	65	401,006	26	1,569,162
1993	71,762	5	79,668	5	916,471	63	386,726	27	1,454,627
1994	91,754	6	89,672	6	1,019,346	64	395,656	25	1,596,428
1995	89,912	6	82,882	5	1,051,614	65	381,887	24	1,606,295
1996	88,954	6	83,784	6	1,022,237	68	318,331	21	1,513,306
1997	109,867	7	113,343	7	964,775	59	437,975	27	1,625,960
1998	107,403	5	113,615	6	1,310,375	66	457,839	23	1,989,232
1999	127,451	7	115,853	6	1,175,925	65	400,196	22	1,819,425
2000	96,381	5	113,484	6	1,243,428	66	424,474	23	1,877,767
2001	114,599	6	104,845	6	1,138,657	64	421,458	24	1,779,559
2002	140,210	7	121,133	6	1,313,287	66	405,290	20	1,979,920
2003	111,806	6	111,381	6	1,316,029	67	438,874	22	1,978,090
2004	114,629	6	146,228	7	1,427,334	69	376,633	18	2,064,824
2005	97,345	4	135,044	6	1,539,545	70	434,917	20	2,206,851
2006	98,499	4	141,813	6	1,588,666	70	427,431	19	2,256,409
2007	121,311	5	144,217	6	1,707,323	71	435,489	18	2,408,340
2008	90,375	4	144,262	6	1,621,776	68	537,602	22	2,394,015

Table 9. Catches of albacore, bigeye, skipjack and yellowfin in the EPO

YEAR	ALBACORE		BIGEYE		SKIPJACK		YELLOWFIN		TOTAL
	TONNES	%	TONNES	%	TONNES	%	TONNES	%	
1960	23,292	12	17,746	9	46,059	24	107,968	55	195,065
1961	15,862	6	52,642	21	75,129	30	108,727	43	252,360
1962	22,659	10	45,670	20	77,102	34	78,240	35	223,671
1963	29,799	11	66,757	24	101,931	37	74,706	27	273,193
1964	22,586	10	46,406	20	65,674	28	100,020	43	234,686
1965	17,939	8	29,395	13	84,969	39	88,263	40	220,566
1966	17,938	9	35,302	17	66,307	33	83,888	41	203,435
1967	22,524	8	38,880	14	127,982	47	80,773	30	270,159
1968	26,249	10	39,966	16	77,110	31	109,076	43	252,401
1969	22,646	8	53,164	19	64,894	23	138,055	50	278,759
1970	26,809	9	35,752	13	62,170	22	161,138	56	285,869
1971	24,517	8	34,256	12	112,883	39	120,658	41	292,314
1972	29,548	10	40,225	14	37,504	13	188,276	64	295,553
1973	18,763	6	54,355	16	49,020	15	210,491	63	332,629
1974	25,257	7	38,515	11	87,557	24	208,234	58	359,563
1975	23,051	6	48,343	12	134,732	33	199,864	49	405,990
1976	20,577	4	71,584	15	136,918	30	234,378	51	463,457
1977	24,024	6	85,249	21	94,085	23	199,366	50	402,724
1978	31,108	7	89,198	19	179,665	38	173,980	37	473,951
1979	10,953	3	67,533	17	141,503	35	187,124	46	407,113
1980	11,569	3	86,403	22	138,102	35	158,862	40	394,936
1981	20,283	5	68,344	17	126,001	32	178,510	45	393,138
1982	12,522	4	60,349	20	104,669	34	127,534	42	305,074
1983	15,729	6	64,694	27	61,975	26	99,680	41	242,078
1984	21,857	8	55,268	19	63,611	22	149,465	52	290,201
1985	14,841	4	72,398	20	52,002	14	225,939	62	365,180
1986	11,284	2	105,185	22	67,745	14	286,071	61	470,285
1987	12,977	3	101,347	22	66,466	14	286,164	61	466,954
1988	15,771	3	74,313	16	92,127	19	296,428	62	478,639
1989	9,501	2	72,994	15	98,921	21	299,436	62	480,852
1990	10,850	2	104,851	21	77,107	16	301,522	61	494,330
1991	11,481	3	109,121	24	65,890	15	265,970	59	452,462
1992	23,075	5	92,000	20	87,294	19	252,514	56	454,883
1993	15,605	4	82,190	19	89,919	20	251,486	57	439,200
1994	20,618	5	107,065	24	74,170	17	243,546	55	445,399
1995	14,075	3	104,959	21	134,288	27	239,364	49	492,686
1996	16,112	3	109,017	22	107,841	22	260,616	53	493,586
1997	17,279	3	116,872	21	156,947	28	272,059	48	563,157
1998	25,913	5	91,132	17	142,846	27	275,909	51	535,800
1999	26,464	4	88,146	13	265,203	39	298,091	44	677,904
2000	23,275	4	142,498	22	204,673	31	282,626	43	653,072
2001	33,336	5	129,930	18	145,257	20	416,746	57	725,269
2002	30,154	4	131,876	17	154,299	20	439,537	58	755,866
2003	45,538	5	113,971	13	278,578	33	407,896	48	845,983
2004	40,834	6	111,269	17	201,010	31	290,887	45	644,000
2005	24,564	4	111,283	16	265,091	39	283,167	41	684,105
2006	29,720	5	117,945	19	299,053	48	177,180	28	623,898
2007	27,797	5	94,023	18	209,460	41	180,347	35	511,627
2008	27,690	4	95,002	15	296,923	48	195,847	32	615,462

Table 10. Catches of albacore, bigeye, skipjack and yellowfin in the Pacific Ocean

YEAR	ALBACORE		BIGEYE		SKIPJACK		YELLOWFIN		TOTAL
	TONNES	%	TONNES	%	TONNES	%	TONNES	%	
1960	54,755	13	62,771	14	135,997	31	181,635	42	435,158
1961	48,784	9	92,022	17	231,865	42	184,165	33	556,836
1962	60,261	11	82,538	15	258,726	46	162,184	29	563,709
1963	56,614	10	111,103	20	224,634	41	150,462	28	542,813
1964	49,238	9	78,786	14	248,592	45	174,168	32	550,784
1965	46,663	9	60,724	12	240,190	47	161,892	32	509,469
1966	70,118	11	68,454	11	315,819	50	176,956	28	631,347
1967	77,927	12	74,787	12	332,790	52	149,349	24	634,853
1968	87,628	14	69,824	11	272,065	44	190,545	31	620,062
1969	93,783	14	87,320	13	260,357	39	222,610	34	664,070
1970	98,305	13	75,217	10	304,052	41	257,504	35	735,078
1971	120,642	16	75,918	10	341,466	45	222,484	29	760,510
1972	136,245	17	95,683	12	275,302	34	303,500	37	810,730
1973	148,301	15	101,194	10	377,781	39	338,393	35	965,669
1974	138,084	14	87,449	9	444,005	44	338,877	34	1,008,415
1975	106,915	11	113,566	12	423,494	43	340,003	35	983,978
1976	152,197	13	148,956	13	495,267	42	385,669	33	1,182,089
1977	103,460	9	162,037	14	499,105	44	380,904	33	1,145,506
1978	136,879	11	148,292	12	632,038	50	348,053	28	1,265,262
1979	95,831	8	133,905	11	555,802	48	381,566	33	1,167,104
1980	105,692	9	151,536	12	597,708	49	372,010	30	1,226,946
1981	106,668	9	121,690	10	564,260	47	404,449	34	1,197,067
1982	99,369	9	119,650	10	594,911	51	348,598	30	1,162,528
1983	79,841	6	124,590	10	745,659	57	356,840	27	1,306,930
1984	95,309	7	119,948	8	825,701	57	405,779	28	1,446,737
1985	90,875	7	141,104	10	655,626	48	485,483	35	1,373,088
1986	82,329	5	168,962	10	823,147	51	536,794	33	1,611,232
1987	73,602	5	180,616	11	754,346	47	589,777	37	1,598,341
1988	78,050	5	142,760	8	941,281	55	559,536	33	1,721,627
1989	79,450	5	150,231	9	922,389	52	613,302	35	1,765,372
1990	71,893	4	195,269	10	967,252	51	655,082	35	1,889,496
1991	67,990	3	182,888	9	1,183,736	56	660,733	32	2,095,347
1992	85,596	4	183,062	9	1,101,867	54	653,520	32	2,024,045
1993	87,367	5	161,858	9	1,006,390	53	638,212	34	1,893,827
1994	112,372	6	196,737	10	1,093,516	54	639,202	31	2,041,827
1995	103,987	5	187,841	9	1,185,902	56	621,251	30	2,098,981
1996	105,066	5	192,801	10	1,130,078	56	578,947	29	2,006,892
1997	127,146	6	230,215	11	1,121,722	51	710,034	32	2,189,117
1998	133,316	5	204,747	8	1,453,221	58	733,748	29	2,525,032
1999	153,915	6	203,999	8	1,441,128	58	698,287	28	2,497,329
2000	119,656	5	255,982	10	1,448,101	57	707,100	28	2,530,839
2001	147,935	6	234,775	9	1,283,914	51	838,204	33	2,504,828
2002	170,364	6	253,009	9	1,467,586	54	844,827	31	2,735,786
2003	157,344	6	225,352	8	1,594,607	56	846,770	30	2,824,073
2004	155,463	6	257,497	10	1,628,344	60	667,520	25	2,708,824
2005	121,909	4	246,327	9	1,804,636	62	718,084	25	2,890,956
2006	128,219	4	259,758	9	1,887,719	66	604,611	21	2,880,307
2007	149,108	5	238,240	8	1,916,783	66	615,836	21	2,919,967
2008	118,065	4	239,264	8	1,918,699	64	733,449	24	3,009,477

Table 11. Global catches of albacore, bigeye, skipjack and yellowfin

YEAR	ALBACORE		BIGEYE		SKIPJACK		YELLOWFIN		TOTAL
	TONNES	%	TONNES	%	TONNES	%	TONNES	%	
1960	130,229	20	88,048	13	155,782	23	293,249	44	667,308
1961	118,910	15	124,098	16	253,353	32	284,369	36	780,730
1962	157,011	19	124,222	15	286,687	34	274,099	33	842,019
1963	148,495	18	150,516	19	263,950	33	248,781	31	811,742
1964	159,228	19	120,296	14	287,607	34	277,314	33	844,445
1965	150,677	18	119,244	14	290,750	35	265,353	32	826,024
1966	160,716	17	117,633	13	370,217	39	291,029	31	939,595
1967	175,344	19	124,651	13	391,377	41	254,054	27	945,426
1968	177,358	17	130,898	13	354,614	35	362,147	35	1,025,017
1969	189,979	18	153,301	15	326,184	31	381,386	36	1,050,850
1970	181,735	17	143,005	13	397,202	36	372,338	34	1,094,280
1971	215,282	18	152,623	13	461,586	40	337,660	29	1,167,151
1972	230,934	19	161,257	13	389,030	32	440,137	36	1,221,358
1973	245,471	18	174,093	12	505,570	36	472,677	34	1,397,811
1974	237,374	16	178,185	12	615,370	41	486,652	32	1,517,581
1975	177,870	13	211,011	15	518,999	37	505,940	36	1,413,820
1976	244,303	15	222,139	14	615,413	38	553,889	34	1,635,744
1977	191,415	11	251,504	15	650,821	39	577,373	35	1,671,113
1978	228,259	13	250,437	14	782,297	43	540,018	30	1,801,011
1979	188,252	11	213,388	13	694,087	42	561,038	34	1,656,765
1980	181,267	10	249,639	14	764,193	44	549,925	32	1,745,024
1981	181,202	10	224,134	13	751,539	43	609,197	34	1,766,072
1982	197,399	11	236,400	13	809,155	45	573,003	32	1,815,957
1983	166,887	9	233,713	12	953,917	49	589,173	30	1,943,690
1984	172,108	8	234,562	11	1,066,845	51	628,037	30	2,101,552
1985	177,537	8	271,541	13	916,243	43	767,432	36	2,132,753
1986	203,813	8	291,578	12	1,096,568	45	830,100	34	2,422,059
1987	187,302	8	301,469	12	1,042,926	43	898,028	37	2,429,725
1988	174,642	7	282,757	11	1,287,178	48	911,251	34	2,655,828
1989	163,452	6	297,713	11	1,288,966	47	981,511	36	2,731,642
1990	174,024	6	353,629	12	1,341,547	45	1,090,346	37	2,959,546
1991	153,417	5	356,164	11	1,649,851	51	1,061,927	33	3,221,359
1992	177,065	5	354,205	11	1,558,422	48	1,134,019	35	3,223,711
1993	179,390	5	375,361	11	1,524,560	47	1,193,136	36	3,272,447
1994	208,640	6	439,470	13	1,620,526	48	1,138,023	33	3,406,659
1995	194,609	6	433,486	13	1,686,627	49	1,108,291	32	3,423,013
1996	195,607	6	442,263	13	1,600,354	48	1,075,854	32	3,314,078
1997	214,285	6	487,607	14	1,607,255	46	1,188,427	34	3,497,574
1998	230,234	6	457,105	12	1,945,504	51	1,193,102	31	3,825,945
1999	258,634	7	483,439	12	2,033,827	51	1,194,767	30	3,970,667
2000	228,550	6	489,203	12	2,024,760	52	1,175,928	30	3,918,441
2001	262,763	7	452,011	12	1,871,936	48	1,320,999	34	3,907,709
2002	265,134	6	470,788	11	2,072,203	50	1,325,914	32	4,134,039
2003	245,137	6	446,519	10	2,219,546	51	1,414,743	33	4,325,945
2004	233,174	5	482,045	11	2,247,168	53	1,296,683	30	4,259,070
2005	203,171	5	440,444	10	2,490,831	56	1,317,847	30	4,452,293
2006	220,849	5	444,512	10	2,635,877	60	1,114,907	25	4,416,145
2007	231,743	5	446,104	11	2,505,383	59	1,039,083	25	4,222,313
2008	200,700	5	447,128	10	2,507,299	58	1,156,696	27	4,311,823

Table 12. Catches of albacore, bigeye, skipjack and yellowfin by ocean area. Estimates for the Atlantic Ocean and Indian Ocean for 2008 have been carried over from 2007.

YEAR	WCPO		EPO		ATLANTIC		INDIAN		TOTAL
	TONNES	%	TONNES	%	TONNES	%	TONNES	%	
1960	240,093	36	195,065	29	145,384	22	86,766	13	667,308
1961	304,476	39	252,360	32	135,230	17	88,664	11	780,730
1962	340,038	40	223,671	27	169,697	20	108,613	13	842,019
1963	269,620	33	273,193	34	188,394	23	80,535	10	811,742
1964	316,098	37	234,686	28	201,987	24	91,674	11	844,445
1965	288,903	35	220,566	27	222,199	27	94,356	11	826,024
1966	427,912	46	203,435	22	181,817	19	126,431	13	939,595
1967	364,694	39	270,159	29	184,929	20	125,644	13	945,426
1968	367,661	36	252,401	25	228,017	22	176,938	17	1,025,017
1969	385,311	37	278,759	27	236,694	23	150,086	14	1,050,850
1970	449,209	41	285,869	26	237,191	22	122,011	11	1,094,280
1971	468,196	40	292,314	25	290,958	25	115,683	10	1,167,151
1972	515,177	42	295,553	24	301,937	25	108,691	9	1,221,358
1973	633,040	45	332,629	24	304,880	22	127,262	9	1,397,811
1974	648,852	43	359,563	24	358,304	24	150,862	10	1,517,581
1975	577,988	41	405,990	29	302,119	21	127,723	9	1,413,820
1976	718,632	44	463,457	28	316,778	19	136,877	8	1,635,744
1977	742,782	44	402,724	24	372,569	22	153,038	9	1,671,113
1978	791,311	44	473,951	26	368,658	20	167,091	9	1,801,011
1979	759,991	46	407,113	25	338,014	20	151,647	9	1,656,765
1980	832,010	48	394,936	23	367,602	21	150,476	9	1,745,024
1981	803,929	46	393,138	22	416,733	24	152,272	9	1,766,072
1982	857,454	47	305,074	17	469,190	26	184,239	10	1,815,957
1983	1,064,852	55	242,078	12	430,504	22	206,256	11	1,943,690
1984	1,156,536	55	290,201	14	372,368	18	282,447	13	2,101,552
1985	1,007,908	47	365,180	17	429,982	20	329,683	15	2,132,753
1986	1,140,947	47	470,285	19	423,538	17	387,289	16	2,422,059
1987	1,131,387	47	466,954	19	403,643	17	427,741	18	2,429,725
1988	1,242,988	47	478,639	18	414,430	16	519,771	20	2,655,828
1989	1,284,520	47	480,852	18	424,384	16	541,886	20	2,731,642
1990	1,395,166	47	494,330	17	489,460	17	580,590	20	2,959,546
1991	1,642,885	51	452,462	14	539,051	17	586,961	18	3,221,359
1992	1,569,162	49	454,883	14	503,396	16	696,270	22	3,223,711
1993	1,454,627	44	439,200	13	554,088	17	824,532	25	3,272,447
1994	1,596,428	47	445,399	13	562,096	16	802,736	24	3,406,659
1995	1,606,295	47	492,686	14	514,855	15	809,177	24	3,423,013
1996	1,513,306	46	493,586	15	489,079	15	818,107	25	3,314,078
1997	1,625,960	46	563,157	16	452,083	13	856,374	24	3,497,574
1998	1,989,232	52	535,800	14	469,574	12	831,339	22	3,825,945
1999	1,819,425	46	677,904	17	502,204	13	971,134	24	3,970,667
2000	1,877,767	48	653,072	17	459,641	12	927,961	24	3,918,441
2001	1,779,559	46	725,269	19	484,624	12	918,257	23	3,907,709
2002	1,979,920	48	755,866	18	394,331	10	1,003,922	24	4,134,039
2003	1,978,090	46	845,983	20	424,287	10	1,077,585	25	4,325,945
2004	2,064,824	48	644,000	15	418,850	10	1,131,396	27	4,259,070
2005	2,206,851	50	684,105	15	399,212	9	1,162,125	26	4,452,293
2006	2,256,409	51	623,898	14	384,273	9	1,151,565	26	4,416,145
2007	2,408,340	57	511,627	12	367,390	9	934,956	22	4,222,313
2008	2,394,015	56	615,462	14	367,390	9	934,956	22	4,311,823

Table 13. Commercial catches of billfish in the WCPFC Statistical Area, by gear type and species

YEAR	LONGLINE					PURSESEINE		
	BLUE MARLIN	BLACK MARLIN	STRIPED MARLIN	SWORD-FISH	SUB-TOTAL	BLUE MARLIN	BLACK MARLIN	SUB-TOTAL
1962	14,197	2,091	15,207	10,354	41,849	0	0	0
1963	11,583	2,100	12,384	9,741	35,808	0	0	0
1964	10,240	1,697	17,023	5,942	34,902	0	0	0
1965	8,303	2,260	13,298	8,176	32,037	0	0	0
1966	8,763	2,408	9,648	9,821	30,640	0	0	0
1967	7,287	2,362	11,506	10,643	31,798	0	0	0
1968	6,673	2,951	11,783	9,504	30,911	0	1	1
1969	7,091	2,619	8,500	8,945	27,155	0	1	1
1970	9,977	3,544	7,594	7,578	28,693	6	14	20
1971	6,450	3,776	6,373	8,615	25,214	8	19	27
1972	7,957	3,696	5,194	8,110	24,957	9	20	29
1973	7,483	3,793	5,550	7,303	24,129	14	31	45
1974	7,253	3,115	4,788	7,990	23,146	7	17	24
1975	7,079	3,281	3,764	8,519	22,643	7	17	24
1976	6,710	2,242	3,497	9,955	22,404	6	16	22
1977	7,020	2,427	2,948	9,583	21,978	9	21	30
1978	8,861	2,787	3,744	9,871	25,263	8	20	28
1979	9,414	2,395	5,059	11,178	28,046	13	29	42
1980	10,245	1,552	4,823	8,740	25,360	13	29	42
1981	10,332	2,009	4,773	10,111	27,225	30	60	90
1982	10,398	2,023	4,536	9,214	26,171	42	90	132
1983	9,005	1,741	3,476	10,108	24,330	67	132	199
1984	12,197	1,317	4,836	9,975	28,325	86	161	247
1985	9,667	1,048	5,509	12,415	28,639	69	137	206
1986	10,348	1,121	6,175	11,473	29,117	66	128	194
1987	14,403	1,533	5,558	12,930	34,424	73	145	218
1988	14,553	2,294	7,613	12,804	37,264	71	142	213
1989	11,893	1,207	6,646	10,695	30,441	86	169	255
1990	10,354	1,166	4,901	11,555	27,976	95	184	279
1991	11,032	1,506	5,275	12,818	30,631	135	253	388
1992	13,365	1,669	5,375	18,357	38,766	141	241	382
1993	15,901	1,443	10,609	19,663	47,616	142	246	388
1994	15,688	1,868	6,204	17,101	40,861	141	239	380
1995	18,117	1,357	7,203	15,755	42,432	144	242	386
1996	14,600	968	5,848	15,218	36,634	160	263	423
1997	12,698	1,011	5,040	18,260	37,009	179	270	449
1998	16,635	1,601	7,117	19,402	44,755	182	267	449
1999	14,785	1,991	5,924	20,656	43,356	153	235	388
2000	14,108	1,334	4,393	21,311	41,146	184	273	457
2001	15,686	1,471	4,869	18,264	40,290	189	257	446
2002	15,450	1,712	4,435	18,764	40,361	205	278	483
2003	23,767	1,843	5,356	19,919	50,885	214	283	497
2004	22,091	2,413	5,191	21,539	51,234	226	293	519
2005	20,036	2,725	4,509	19,288	46,558	265	318	583
2006	18,957	2,586	4,502	22,615	48,660	234	294	528
2007	16,177	1,923	3,838	24,874	46,812	220	271	491
2008	16,334	2,117	3,696	26,874	49,021	220	271	491

Table 14 continued

YEAR	OTHER COMMERCIAL GEARS					TOTAL
	BLUE MARLIN	BLACK MARLIN	STRIPED MARLIN	SWORD-FISH	SUB-TOTAL	
1962	1,023	65	0	38	1,126	42,975
1963	1,084	69	0	41	1,194	37,002
1964	1,187	73	2,366	1,203	4,829	39,731
1965	1,283	77	2,790	2,118	6,268	38,305
1966	1,379	82	1,676	1,934	5,071	35,711
1967	1,497	87	1,641	1,161	4,386	36,184
1968	1,528	92	1,255	1,883	4,758	35,670
1969	1,745	98	2,625	1,673	6,141	33,297
1970	1,850	125	1,184	1,895	5,054	33,767
1971	2,064	140	2,284	617	5,105	30,346
1972	2,154	146	1,369	436	4,105	29,091
1973	2,877	174	4,011	972	8,034	32,208
1974	3,238	201	3,930	1,789	9,158	32,328
1975	3,986	206	7,255	3,072	14,519	37,186
1976	3,603	175	4,163	4,138	12,079	34,505
1977	4,858	243	4,980	2,802	12,883	34,891
1978	3,604	156	6,035	2,855	12,650	37,941
1979	3,681	196	3,058	1,368	8,303	36,391
1980	3,631	177	4,008	2,308	10,124	35,526
1981	4,245	195	4,410	2,201	11,051	38,366
1982	3,904	175	2,997	1,643	8,719	35,022
1983	4,243	194	2,667	1,386	8,490	33,019
1984	3,536	211	3,060	1,420	8,227	36,799
1985	4,205	257	3,116	1,540	9,118	37,963
1986	4,045	268	4,181	1,633	10,127	39,438
1987	3,164	195	2,399	1,317	7,075	41,717
1988	3,750	222	2,880	1,552	8,404	45,881
1989	4,059	241	2,211	2,115	8,626	39,322
1990	5,251	342	2,489	1,388	9,470	37,725
1991	5,837	388	1,839	883	8,947	39,966
1992	3,046	218	1,515	1,393	6,172	45,320
1993	3,182	221	1,267	747	5,417	53,421
1994	4,673	289	1,824	924	7,710	48,951
1995	5,254	330	1,248	1,203	8,035	50,853
1996	5,688	339	912	1,260	8,199	45,256
1997	2,212	120	1,017	830	4,179	41,637
1998	2,365	138	1,421	1,082	5,006	50,210
1999	2,391	141	1,340	1,256	5,128	48,872
2000	2,438	150	1,380	1,436	5,404	47,007
2001	2,383	138	1,370	1,079	4,970	45,706
2002	2,471	152	1,587	1,483	5,693	46,537
2003	2,550	167	1,261	1,467	5,445	56,827
2004	1,833	125	1,465	1,382	4,805	56,558
2005	1,890	127	1,334	1,541	4,892	52,033
2006	1,966	142	1,308	1,838	5,254	54,442
2007	2,209	161	1,083	1,389	4,842	52,145
2008	3,817	186	1,084	1,391	6,478	55,990

Table 15. Commercial catches of billfish in the WCPFC Statistical Area, by species

YEAR	BLUE MARLIN		BLACK MARLIN		STRIPED MARLIN		SWORDFISH		TOTAL
	TONNES	%	TONNES	%	TONNES	%	TONNES	%	
1962	15,220	35	2,156	5	15,207	35	10,392	24	42,975
1963	12,667	34	2,169	6	12,384	33	9,782	26	37,002
1964	11,427	29	1,770	4	19,389	49	7,145	18	39,731
1965	9,586	25	2,337	6	16,088	42	10,294	27	38,305
1966	10,142	28	2,490	7	11,324	32	11,755	33	35,711
1967	8,784	24	2,449	7	13,147	36	11,804	33	36,184
1968	8,201	23	3,044	9	13,038	37	11,387	32	35,670
1969	8,836	27	2,718	8	11,125	33	10,618	32	33,297
1970	11,833	35	3,683	11	8,778	26	9,473	28	33,767
1971	8,522	28	3,935	13	8,657	29	9,232	30	30,346
1972	10,120	35	3,862	13	6,563	23	8,546	29	29,091
1973	10,374	32	3,998	12	9,561	30	8,275	26	32,208
1974	10,498	32	3,333	10	8,718	27	9,779	30	32,328
1975	11,072	30	3,504	9	11,019	30	11,591	31	37,186
1976	10,319	30	2,433	7	7,660	22	14,093	41	34,505
1977	11,887	34	2,691	8	7,928	23	12,385	35	34,891
1978	12,473	33	2,963	8	9,779	26	12,726	34	37,941
1979	13,108	36	2,620	7	8,117	22	12,546	34	36,391
1980	13,889	39	1,758	5	8,831	25	11,048	31	35,526
1981	14,607	38	2,264	6	9,183	24	12,312	32	38,366
1982	14,344	41	2,288	7	7,533	22	10,857	31	35,022
1983	13,315	40	2,067	6	6,143	19	11,494	35	33,019
1984	15,819	43	1,689	5	7,896	21	11,395	31	36,799
1985	13,941	37	1,442	4	8,625	23	13,955	37	37,963
1986	14,459	37	1,517	4	10,356	26	13,106	33	39,438
1987	17,640	42	1,873	4	7,957	19	14,247	34	41,717
1988	18,374	40	2,658	6	10,493	23	14,356	31	45,881
1989	16,038	41	1,617	4	8,857	23	12,810	33	39,322
1990	15,700	42	1,692	4	7,390	20	12,943	34	37,725
1991	17,004	43	2,147	5	7,114	18	13,701	34	39,966
1992	16,552	37	2,128	5	6,890	15	19,750	44	45,320
1993	19,225	36	1,910	4	11,876	22	20,410	38	53,421
1994	20,502	42	2,396	5	8,028	16	18,025	37	48,951
1995	23,515	46	1,929	4	8,451	17	16,958	33	50,853
1996	20,448	45	1,570	3	6,760	15	16,478	36	45,256
1997	15,089	36	1,401	3	6,057	15	19,090	46	41,637
1998	19,182	38	2,006	4	8,538	17	20,484	41	50,210
1999	17,329	35	2,367	5	7,264	15	21,912	45	48,872
2000	16,730	36	1,757	4	5,773	12	22,747	48	47,007
2001	18,258	40	1,866	4	6,239	14	19,343	42	45,706
2002	18,126	39	2,142	5	6,022	13	20,247	44	46,537
2003	26,531	47	2,293	4	6,617	12	21,386	38	56,827
2004	24,150	43	2,831	5	6,656	12	22,921	41	56,558
2005	22,191	43	3,170	6	5,843	11	20,829	40	52,033
2006	21,157	39	3,022	6	5,810	11	24,453	45	54,442
2007	18,606	36	2,355	5	4,921	9	26,263	50	52,145
2008	20,371	36	2,574	5	4,780	9	28,265	50	55,990

Table 16. Commercial catches of striped marlin and swordfish in the WCPFC Statistical Area north of the equator

YEAR	STRIPED MARLIN		SWORDFISH		TOTAL
	TONNES	%	TONNES	%	
1962	12,165	55	9,857	45	22,022
1963	9,550	51	9,029	49	18,579
1964	17,913	73	6,745	27	24,658
1965	14,194	60	9,377	40	23,571
1966	9,099	46	10,676	54	19,775
1967	11,802	52	10,920	48	22,722
1968	11,903	54	10,083	46	21,986
1969	10,107	51	9,694	49	19,801
1970	7,574	47	8,517	53	16,091
1971	6,572	47	7,290	53	13,862
1972	4,550	41	6,606	59	11,156
1973	7,496	53	6,769	47	14,265
1974	7,044	47	7,816	53	14,860
1975	9,788	48	10,406	52	20,194
1976	6,222	34	11,904	66	18,126
1977	7,021	38	11,643	62	18,664
1978	8,399	41	11,853	59	20,252
1979	6,605	37	11,011	63	17,616
1980	7,702	45	9,326	55	17,028
1981	7,200	42	10,047	58	17,247
1982	5,315	38	8,625	62	13,940
1983	4,948	33	10,133	67	15,081
1984	6,491	40	9,776	60	16,267
1985	7,312	38	11,990	62	19,302
1986	9,294	45	11,168	55	20,462
1987	6,629	36	11,903	64	18,532
1988	8,659	45	10,697	55	19,356
1989	6,510	39	10,262	61	16,772
1990	5,846	36	10,400	64	16,246
1991	5,807	34	11,284	66	17,091
1992	5,533	26	15,852	74	21,385
1993	10,373	37	17,626	63	27,999
1994	6,040	29	14,804	71	20,844
1995	6,564	32	14,003	68	20,567
1996	5,073	29	12,563	71	17,636
1997	4,359	24	13,779	76	18,138
1998	5,716	29	14,176	71	19,892
1999	4,978	25	15,139	75	20,117
2000	4,089	20	16,034	80	20,123
2001	4,369	25	12,901	75	17,270
2002	3,790	22	13,097	78	16,887
2003	4,024	22	14,640	78	18,664
2004	4,033	22	14,471	78	18,504
2005	3,533	21	13,121	79	16,654
2006	3,445	19	14,269	81	17,714
2007	2,921	17	14,426	83	17,347
2008	2,962	17	14,527	83	17,489

Table 17. Commercial catches of striped marlin and swordfish in the WCPFC Statistical Area south of the equator

YEAR	STRIPED MARLIN		SWORDFISH		TOTAL
	TONNES	%	TONNES	%	
1962	3,042	85	535	15	3,577
1963	2,834	79	753	21	3,587
1964	1,473	79	397	21	1,870
1965	1,890	67	914	33	2,804
1966	2,139	67	1,044	33	3,183
1967	1,345	60	884	40	2,229
1968	1,135	47	1,304	53	2,439
1969	1,018	52	924	48	1,942
1970	1,204	56	956	44	2,160
1971	2,085	52	1,942	48	4,027
1972	2,013	51	1,940	49	3,953
1973	2,065	58	1,506	42	3,571
1974	1,674	46	1,963	54	3,637
1975	1,230	51	1,185	49	2,415
1976	1,438	40	2,189	60	3,627
1977	906	55	741	45	1,647
1978	1,380	61	873	39	2,253
1979	1,512	50	1,535	50	3,047
1980	1,129	40	1,722	60	2,851
1981	1,983	47	2,265	53	4,248
1982	2,219	50	2,232	50	4,451
1983	1,195	47	1,361	53	2,556
1984	1,406	46	1,619	54	3,025
1985	1,313	40	1,966	60	3,279
1986	1,060	35	1,938	65	2,998
1987	1,328	36	2,344	64	3,672
1988	1,833	33	3,655	67	5,488
1989	2,344	48	2,548	52	4,892
1990	1,535	38	2,543	62	4,078
1991	1,288	35	2,417	65	3,705
1992	1,305	25	3,898	75	5,203
1993	1,503	35	2,783	65	4,286
1994	1,988	38	3,230	62	5,218
1995	1,886	39	2,956	61	4,842
1996	1,687	30	3,915	70	5,602
1997	1,698	24	5,311	76	7,009
1998	2,761	30	6,309	70	9,070
1999	2,285	25	6,773	75	9,058
2000	1,684	20	6,713	80	8,397
2001	1,870	23	6,441	77	8,311
2002	2,232	24	7,150	76	9,382
2003	2,593	28	6,746	72	9,339
2004	2,602	24	8,438	76	11,040
2005	2,036	23	6,959	77	8,995
2006	2,156	19	9,459	81	11,615
2007	1,995	15	11,099	85	13,094
2008	1,721	12	13,193	88	14,914

