



**SCIENTIFIC COMMITTEE
FOURTH REGULAR SESSION**

11-22 August 2008
Port Moresby, Papua New Guinea

ESTIMATES OF ANNUAL CATCHES IN THE WCPFC STATISTICAL AREA

WCPFC-SC4-2008/ST-IP-1

**Oceanic Fisheries Programme
Secretariat of the Pacific Community
Noumea, New Caledonia**

ESTIMATES OF ANNUAL CATCHES IN THE WCPFC STATISTICAL AREA

Oceanic Fisheries Programme
Secretariat of the Pacific Community
Noumea, New Caledonia

July 2008

INTRODUCTION

Estimates of annual catches in the WCPFC Statistical Area (Figure 1) are presented for target tuna species, i.e., albacore (*Thunnus alalunga*) bigeye (*Thunnus obesus*), skipjack (*Katsuwonus pelamis*) and yellowfin (*Thunnus albacares*), and major billfish species, i.e., black marlin (*Makaira indica*), blue marlin (*Makaira mazara*), striped marlin (*Tetrapturus audax*) and swordfish (*Xiphias gladius*). Estimates of discards of target tunas and catches in recent years of other non-target fish species, determined from observer data, are also presented. Estimates of catches of southern bluefin tuna (*Thunnus maccoyii*), which are compiled by the Commission for the Conservation of Southern Bluefin Tuna (CCSBT), and catches of small tunas in the domestic fisheries of Indonesia and the Philippines are not presented. Recent catches of tuna in the domestic fisheries of Vietnam may have amounted to about 19,000 tonnes of skipjack, 18,000 tonnes of yellowfin and 5,500 tonnes of bigeye, for a total of 42,500 tonnes (Lewis 2005); however, these catches have been ignored in the tables and figures presented below. The compilation of estimates of catches of Pacific bluefin tuna (*Thunnus orientalis*) commenced only recently; estimates for Pacific bluefin will be presented in future editions of this report.

TARGET TUNA SPECIES

Tables 1–3 and Figures 2 and 3 present estimates of annual catches of target tunas in the WCPFC Statistical Area. For the sources of the annual catch estimates, see Lawson (2007a). For discussion regarding trends, see Williams & Reid (2008). Estimates of purse-seine catches of bigeye and yellowfin that were not already adjusted for the misidentification of bigeye as yellowfin have been adjusted by the OFP (Lawson 2007b). Estimates for 2006–2007 are preliminary.

Notable revisions to the catch estimates include an increase in the estimated catch of bigeye in 2006 from 117,143 t reported last year to 135,726 t reported this year, and an increase in the yellowfin catch in 2006 from 401,773 t to 442,288 t. The changes in both bigeye and yellowfin are due to upward revisions for longline, pole-and-line and purse seine.

Tables 4–7 present estimates of annual catches of target tunas in the WCPO Area and the EPO Area (Figure 1) by gear type. Tables 8–10 present estimates of annual catches of target tunas for the WCPO, the EPO and the Pacific Ocean by species. Table 11 and 12, and Figures 4 and 5, present global catches of target tunas, by species and ocean area respectively.

DISCARDS

An analysis of variance of discard rates for albacore, bigeye and yellowfin and bigeye caught by longliners, determined from observer data stratified by trip, indicated that species, year and flag were significant predictors. Discards by longliners in the WCPFC Statistical Area during 1994–

2006 were estimated with the predicted discard rates; the estimates are presented in Table 13. For flags for which no observer data are available to predict discard rates, discard rates averaged over all other flags, for the species and year, were used. The total discard rate for the three target tuna species during the period was 3.5%.

An analysis of variance of discard rates for skipjack, yellowfin and bigeye caught by purse seiners, determined from observer data stratified by trip, indicated that species, school association (associated or unassociated) and flag, but not year, were significant predictors. Discards by purse seiners in the WCPFC Statistical Area, from 20°S to 20°N and excluding the domestic fisheries of Indonesia and the Philippines, during 1995–2007, were estimated with the predicted discard rates; the estimates are presented in Table 14. The total discard rate for the three target tuna species during the period was 5.0%.

MAJOR BILLFISH SPECIES

Table 15 presents estimates of commercial catches of the four major billfish species by gear type. Table 16 and Figure 6 present estimates of the major billfish catches for all gear types combined. Tables 17 and 18 present estimates of commercial catches of striped marlin and swordfish in the WCPFC Statistical Area north and south of the equator respectively.

OTHER NON-TARGET SPECIES AND SPECIES GROUPS

Estimates of annual catches of other non-target species and species groups were determined from observer data held by the SPC Oceanic Fisheries Programme. Tables 19 and 20 present statistics on observer coverage of longliners and purse seiners. No observer data are available for the domestic fisheries of Indonesia, the Philippines and Chinese Taipei; hence, the catch estimates exclude these sectors.

For longline, observer coverage from 1992 to 2007 has been 0.72% of total effort. Distant-water fleets accounted for 58%, 38% and 58% of the longline catch of albacore, bigeye and yellowfin in the WCPFC Statistical Area during 1992–2007 respectively; however, coverage of the distant-water longline fleets by data held by the OFP is less than 0.06%. Observer data covering the Hawaii longline fleet during 2005–2007 were not yet available at the time of the analysis.

For purse-seine, observer coverage from 1994 to 2007 has been 5.32%. Coverage rates have increased from 2002 onwards due to higher coverage of the fleets of the FSM Arrangement, including Federated States of Micronesia, Marshall Islands, Papua New Guinea, Solomon Islands and Vanuatu. Coverage rates for sets on unassociated and associated schools have been similar.

Catches for each non-target species or species group were estimated using model-based predictors of the catch rate. The logistic and lognormal components of a zero-inflated lognormal (ZILN) model were fitted with the 'glm' function in R¹. For longline, the predicted variable was the logarithm of the catch rate for the observed trip, and predictors were year, month, the number hooks between floats (a proxy for depth), latitude, longitude, sea surface salinity, sea surface temperature and the depth of the 20°C isotherm. For purse seine, the predicted variable was the logarithm of the catch

¹ R Development Core Team. 2007. R: A language and environment for statistical computing. R Foundation for Statistical Computing, Vienna, Austria. ISBN 3-900051-07-0, URL <http://www.R-project.org>.

rate for the observed trip, and predictors were school association (associated or unassociated), year, month, latitude, longitude, sea surface salinity, sea surface temperature and the depth of the 20°C isotherm. All numerical predictors were smoothed with cubic splines. The inclusion of predictors in the model, and the degrees of freedom for the smoothed predictors, were determined using a stepwise procedure that minimised the Bayesian information criterion (BIC). The degrees of freedom and other statistics for each of the models for longline and purse seine are presented in SPC (2007).

The ZILN models of catch rates were applied to stratified effort data. For longline, effort data for the WCPFC Statistical Area were stratified by year, month, 5° of latitude and 5° of longitude; for each time-area stratum, averages of the number of hooks between floats and the oceanographic variables were determined. For purse seine, effort data for the area bounded by 130°E, 150°W, 20°N and 20°S were stratified by year, month, 2° of latitude, 5° of longitude and school association (associated or unassociated); for each time-area stratum, averages of the oceanographic variables were determined. Confidence intervals for the catch estimates were determined from a parametric bootstrap, i.e., from the 2.5% and 97.5% quantiles of catches estimated by taking 1,000 random samples from the posterior distributions of estimates of the model coefficients; the median was taken to be the point estimate. The confidence intervals do not account for errors in the estimates of total effort and model uncertainty, hence they underestimate the true uncertainty.

Catch estimates for longline and purse-seine are presented in Tables 21 and 22 respectively. Figures 7 and 8 present estimated catches and catch rates for non-target species caught by longline and purse seine respectively. The following points were noted in SPC (2007):

- For longline, latitude and longitude are the most important predictors of catch rate, followed by year, sea surface temperature and the number of hooks between floats. For purse seine, longitude is the most important predictor, followed by year, school association and latitude.
- The average degrees of freedom of model predictors and deviance explained was 17.6 and 34.4% respectively for longline, and 4.1 and 16.8% respectively for purse seine. The larger values for longline reflect the broader geographic area and variation in catch rates compared to purse seine.
- For longline, sector was a significant predictor in the logistic component for three species or species groups, in the lognormal component for three, in both for five and in neither for six. For those species or species groups for which sector is significant, the estimates of catch rates could be improved by including sector as a predictor; however, doing so would almost certainly introduce bias into the estimates for the two distant-water sectors, which are covered by only 12 observed trips over the entire time series.
- The estimated catch rates for longline differ considerably from observed catch rates, particularly for individual year-sector strata. For the distant-water longline fleets in particular, for which observer data are lacking, the estimated catch rates are, for many species or species groups, unreasonably high or low. The catch estimates in Table 21 and Figure 7 should therefore be considered only as roughly indicative.
- Low values of observed and estimated catch rates for silky shark caught by longliners in 1994 may be due to species identification errors during the initial implementation of observer programmes covering the offshore tropical sector. Species identification errors may also be responsible for the low values of observed and estimated catch rates for oceanic whitetip sharks and silky sharks caught by purse seiners, and high values for 'other sharks and rays', during the early period of the time series. Data quality in observer programmes covering offshore longline

and purse seine increased considerably from 1995 onwards through technical support provided by the South Pacific Regional Tuna Resources Assessment and Monitoring Project of SPC.

Figure 9 presents the species group composition in the WCPFC Statistical Area (excluding the domestic fisheries of Indonesia, the Philippines and Chinese Taipei) during 1995–2006 for longliners and purse seiners.

REFERENCES

- Lawson, T.A. [ed.]. 2007a. WCPFC Tuna Fishery Yearbook, 2006. Western and Central Pacific Fisheries Commission, Pohnpei, Federated States of Micronesia.
- Lawson, T.A. 2007b. Further analysis of the proportion of bigeye in ‘yellowfin plus bigeye’ caught by purse seiners in the WCPFC Statistical Area. Information Paper ST–IP–5. Third Regular Session of the WCPFC Scientific Committee, 13–24 August 2006, Honolulu, Hawaii, United States of America. Oceanic Fisheries Programme, Secretariat of the Pacific Community, Noumea, New Caledonia.
- Lewis, A.D. 2005. The Tuna Fisheries of Vietnam — An Overview of Available Information. Information Paper ST–IP–5. First Regular Session of the Scientific Committee of the Western and Central Pacific Fisheries Commission, 8–19 August 2005, Noumea, New Caledonia. Oceanic Fisheries Programme, Secretariat of the Pacific Community, Noumea, New Caledonia.
- SPC. 2007. Estimates of annual catches in the WCPFC Statistical Area. Information Paper ST–IP–2. Third Regular Session of the WCPFC Scientific Committee, 13–24 August 2006, Honolulu, Hawaii, United States of America. Oceanic Fisheries Programme, Secretariat of the Pacific Community, Noumea, New Caledonia.
- Williams, P. & C. Reid. 2008. Overview of tuna fisheries in the Western and Central Pacific Ocean, Including Economic Conditions – 2007. Working Paper GN–WP–1. Fourth Regular Session of the WCPFC Scientific Committee, 11–22 August 2008, Port Moresby, Papua New Guinea. Oceanic Fisheries Programme, Secretariat of the Pacific Community, Noumea, New Caledonia and Pacific Islands Forum Fisheries Agency, Honiara, Solomon Islands.

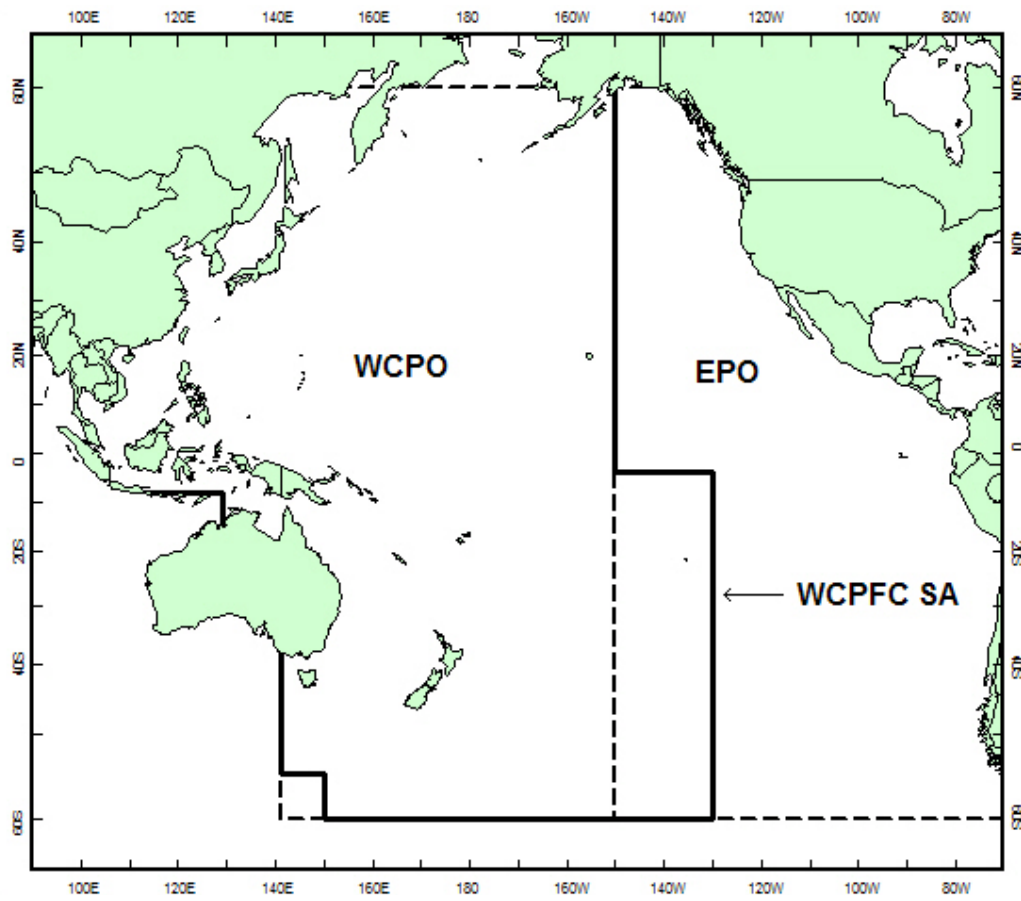


Figure 1. WCPFC Statistical Area (WCPFC SA), the Western and Central Pacific Ocean (WCPO) Area and the Eastern Pacific Ocean (EPO) Area

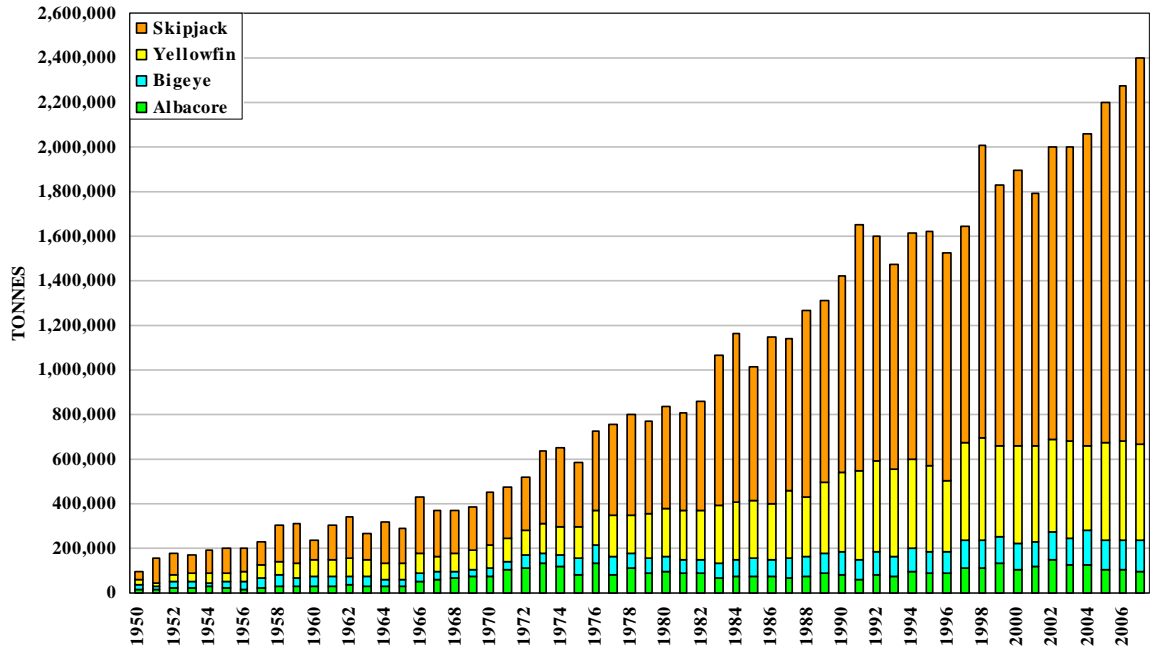


Figure 2. Catches of tuna in the WCPFC Statistical Area, by species

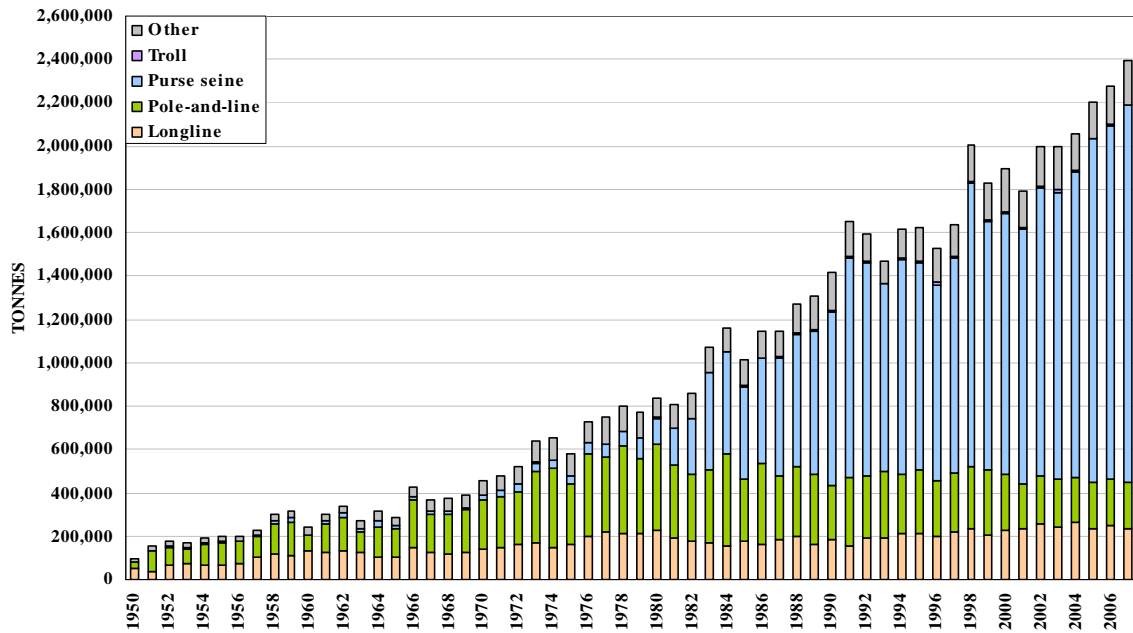


Figure 3. Catches of tuna in the WCPFC Statistical Area, by gear type

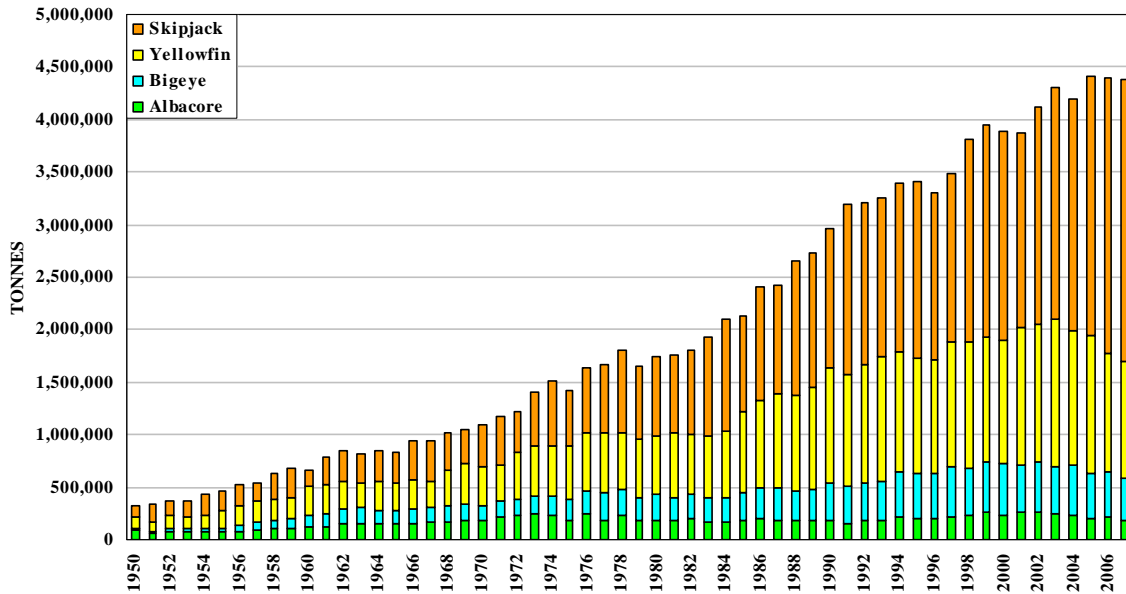


Figure 4. Global catches of tuna, by species

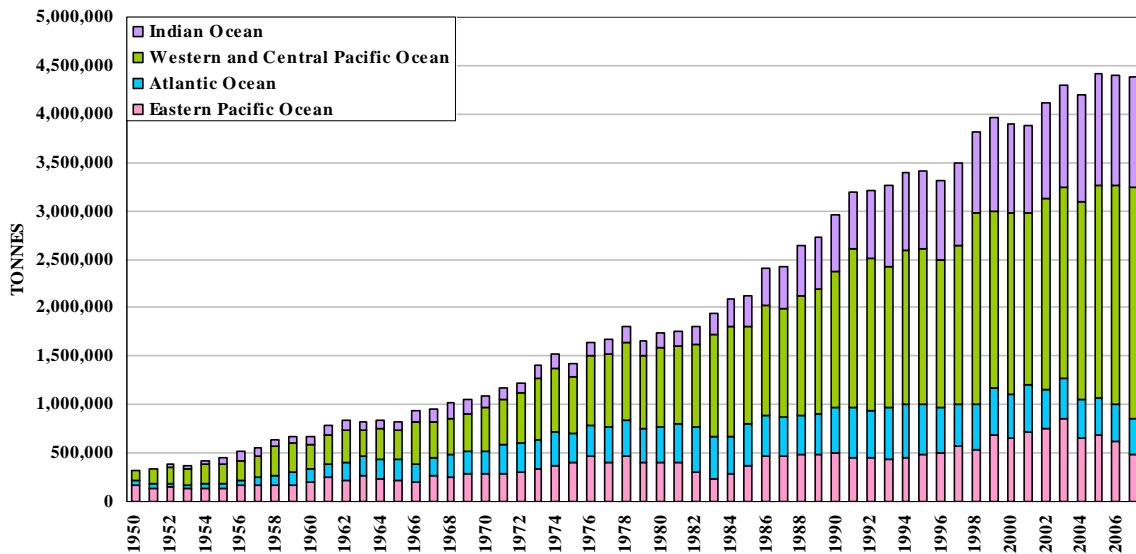


Figure 5. Global catches of tuna, by ocean area

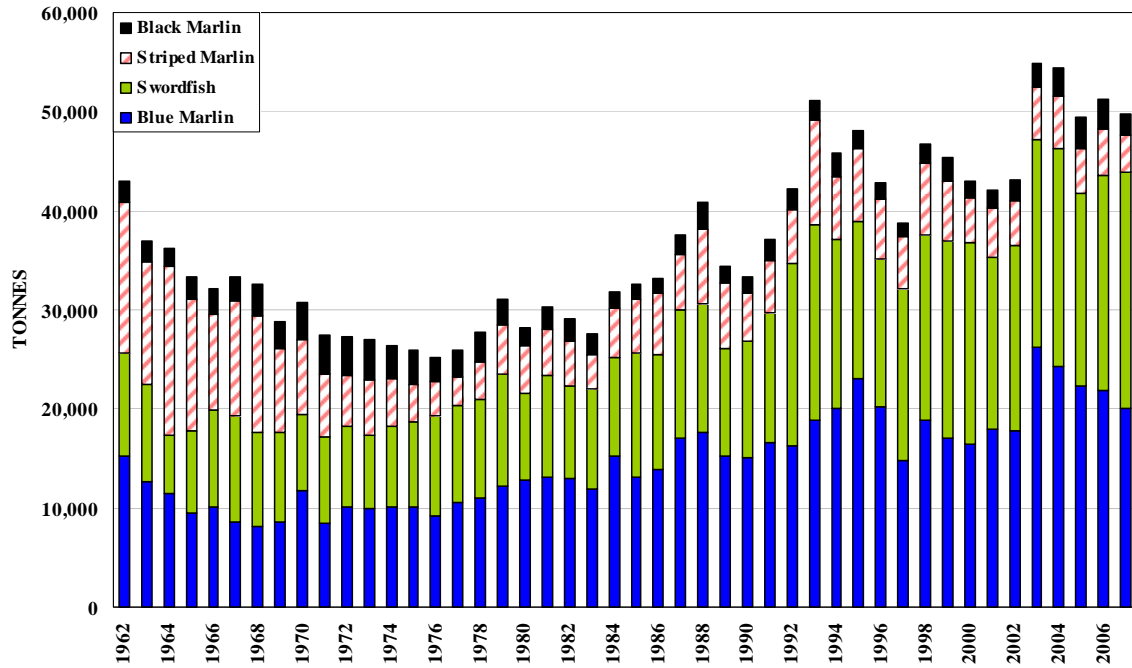


Figure 6. Commercial catches of major billfish species in the WCPFC Statistical Area

Figure 7. Catches and catch rates of non-target species by longliners in the WCPFC Statistical Area (excluding the domestic fleets of Indonesia, the Philippines and Chinese Taipei)

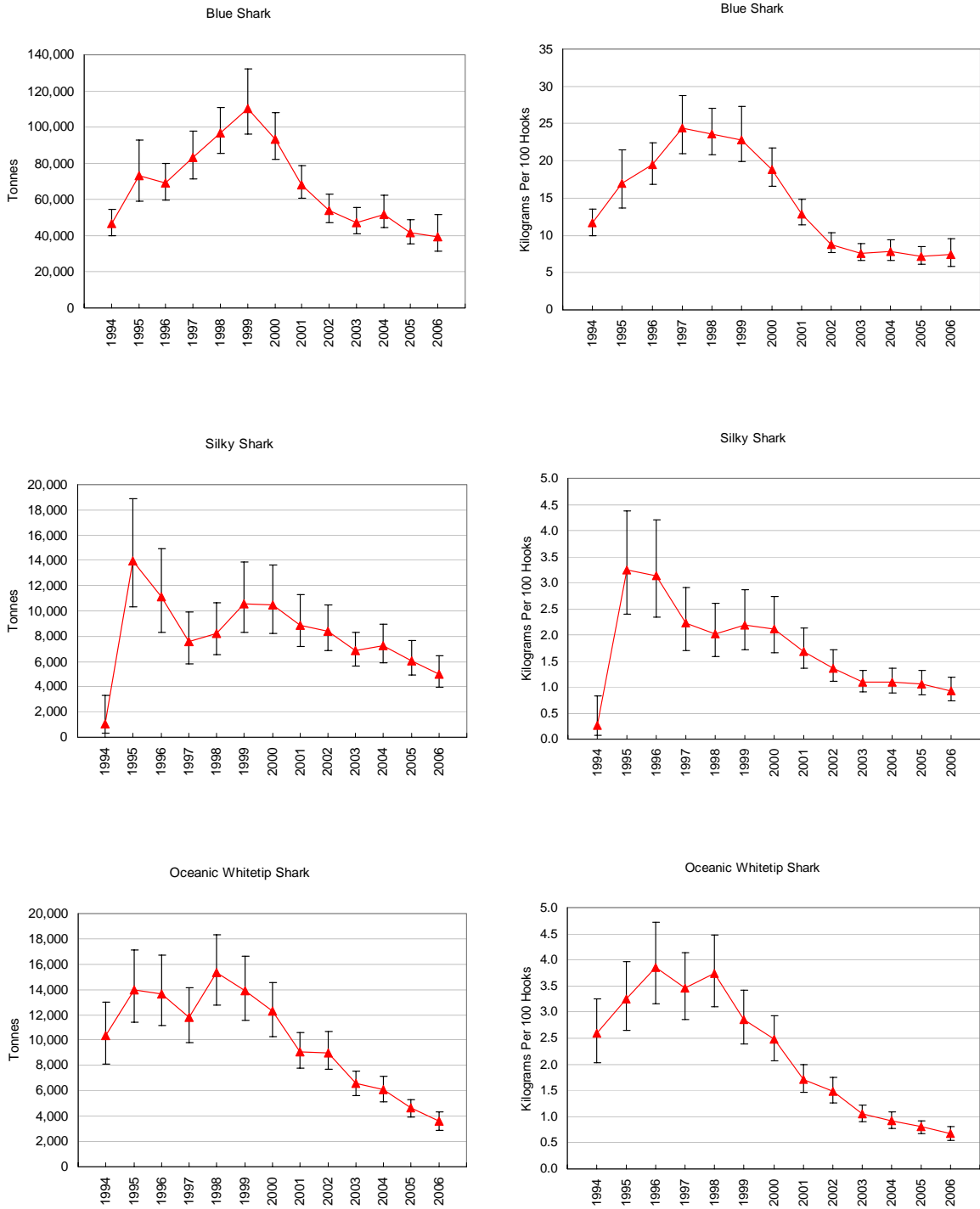


Figure 7 (continued)

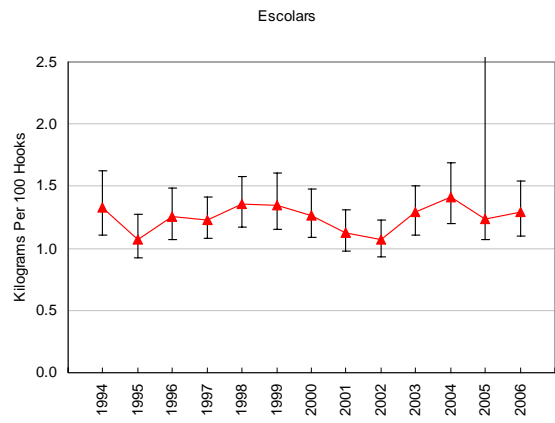
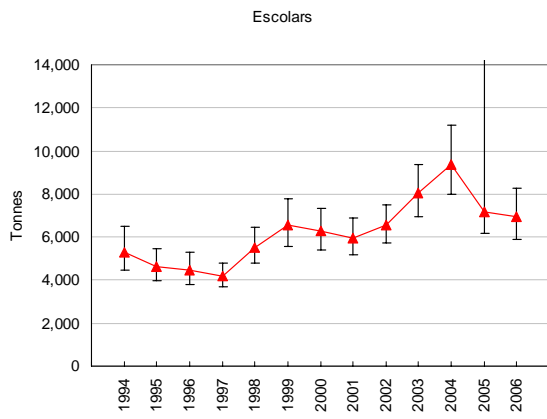
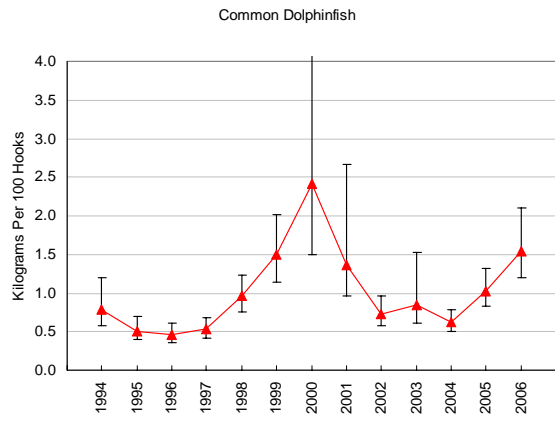
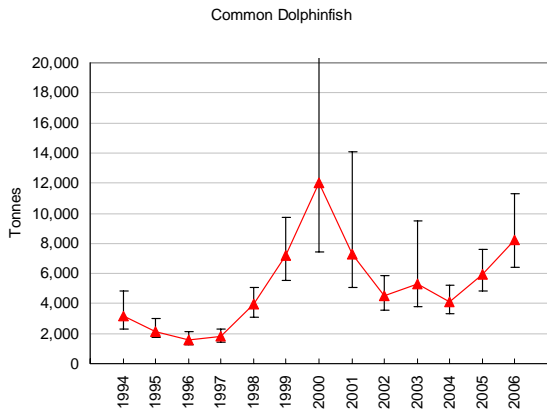
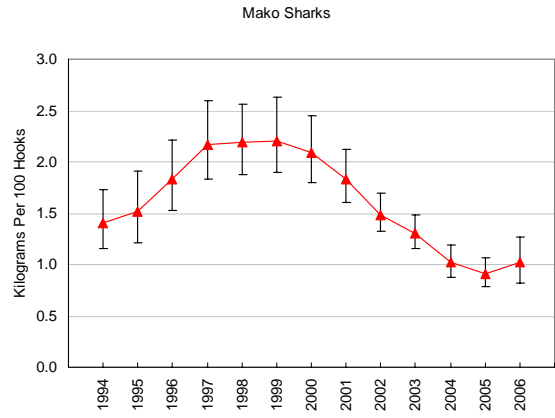
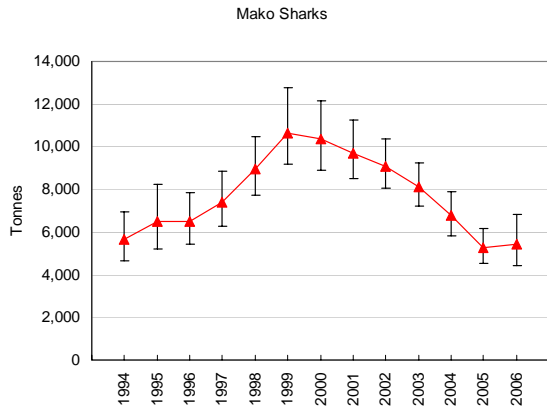


Figure 7 (continued)

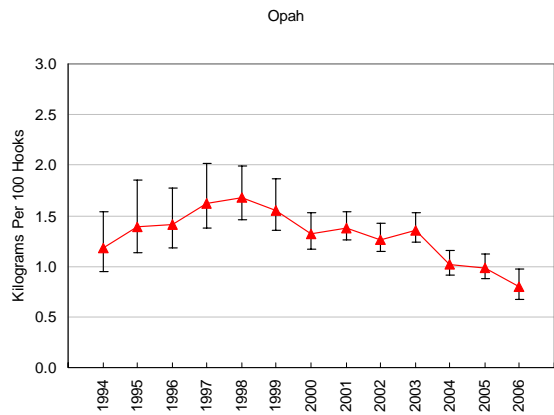
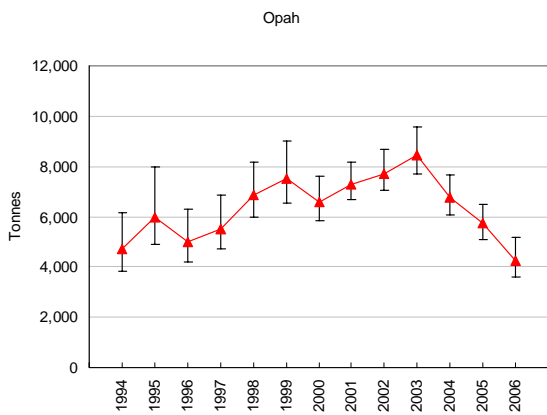
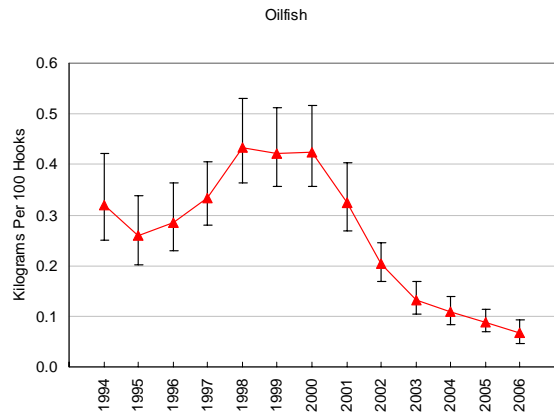
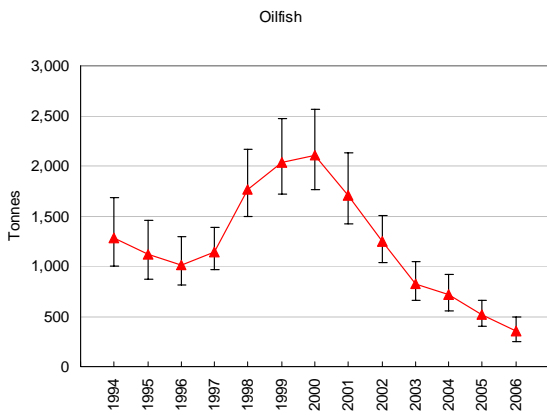
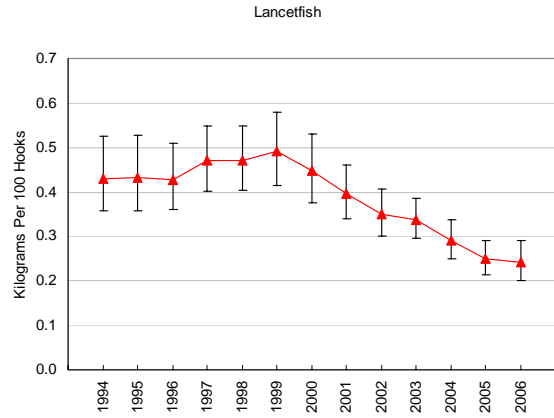
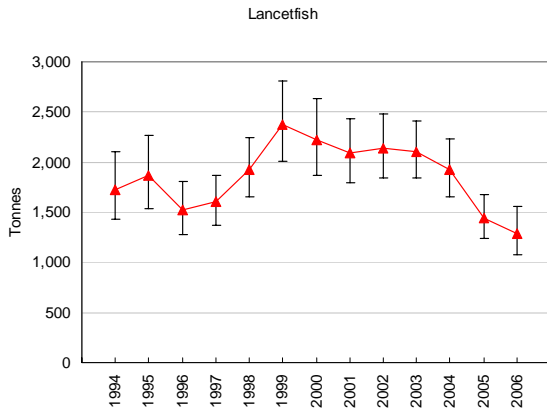


Figure 7 (continued)

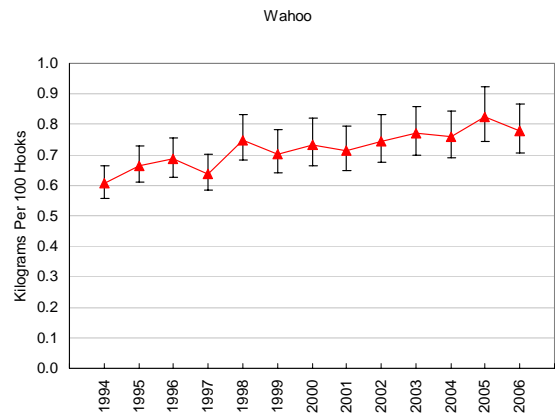
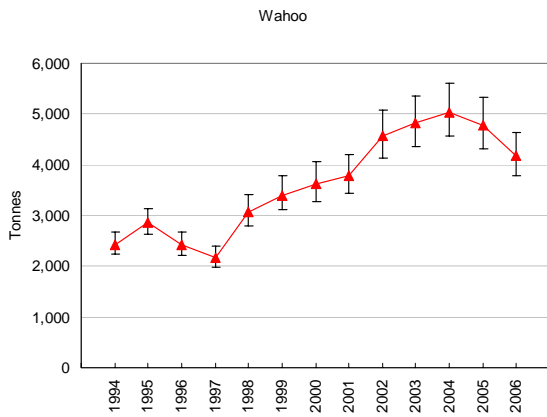
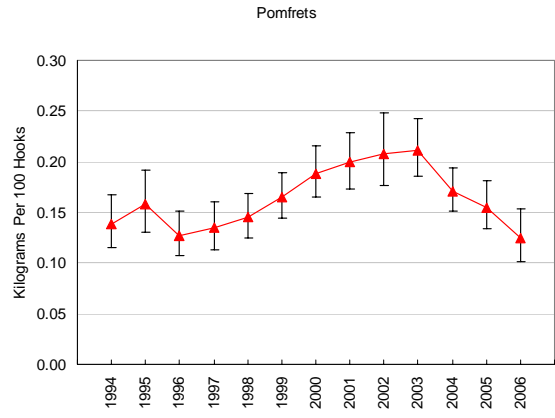
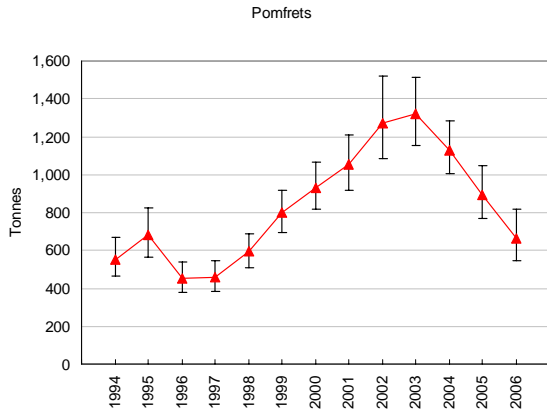


Figure 8. Catches and catch rates of non-target species by purse seiners in the WCPFC Statistical Area (excluding the domestic fleets of Indonesia and the Philippines)

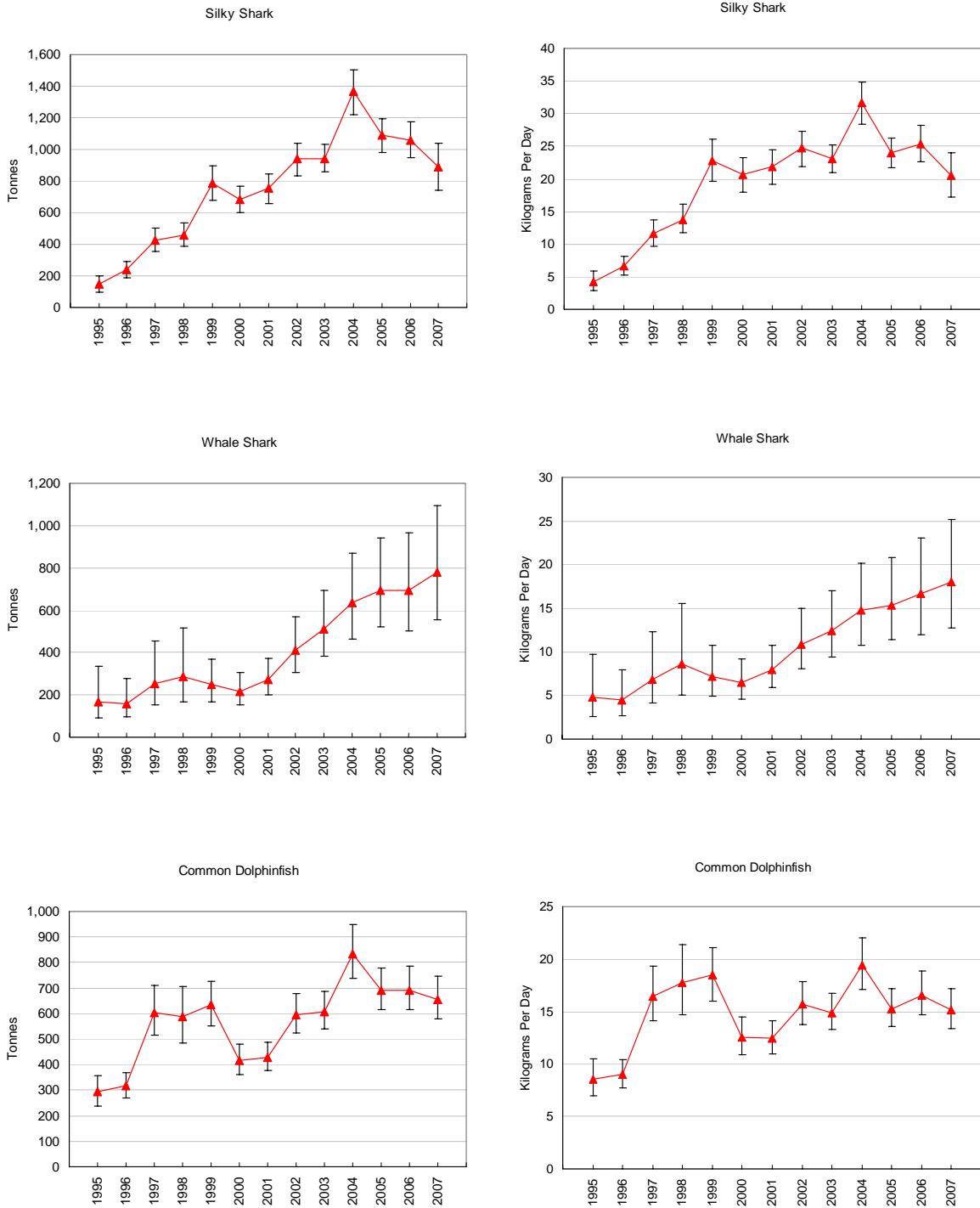


Figure 8 (continued)

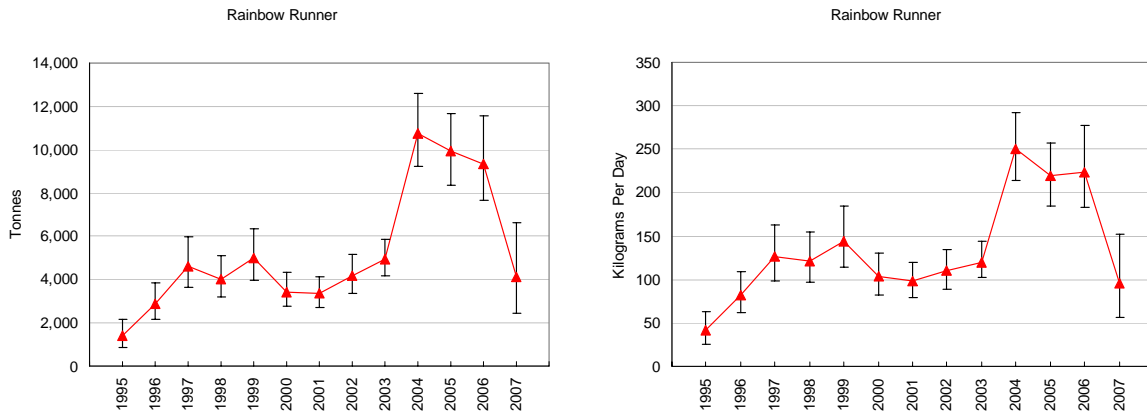


Figure 9. Composition of species groups in the catch by longliners and purse seiners in the WCPFC Statistical Area (excluding the domestic fisheries of Indonesia, the Philippines and Chinese Taipei) during 1995–2006

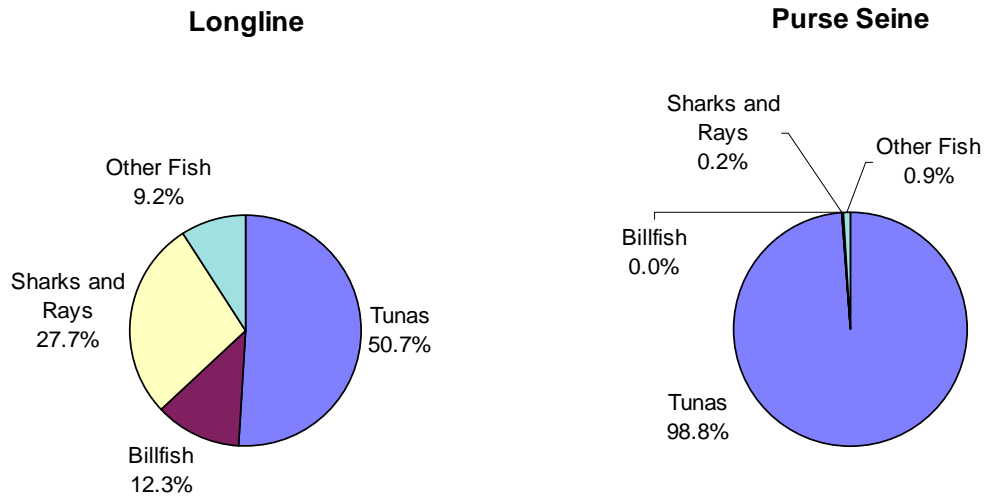


Table 1. Catches of target tunas in the WCPFC Statistical Area, by species

YEAR	ALBACORE		BIGEYE		SKIPJACK		YELLOWFIN		TOTAL
	TONNES	%	TONNES	%	TONNES	%	TONNES	%	
1960	31,463	13	45,025	19	89,938	37	73,667	31	240,093
1961	32,922	11	39,380	13	156,736	51	75,438	25	304,476
1962	37,602	11	36,868	11	181,624	53	83,944	25	340,038
1963	26,815	10	44,346	16	122,703	46	75,756	28	269,620
1964	26,558	8	32,391	10	182,871	58	74,154	23	315,974
1965	28,724	10	31,333	11	155,186	54	73,635	25	288,878
1966	52,173	12	33,187	8	249,485	58	93,099	22	427,944
1967	58,733	16	36,748	10	204,811	55	68,931	19	369,223
1968	63,946	17	30,416	8	194,973	53	81,932	22	371,267
1969	72,106	19	34,356	9	195,464	51	84,806	22	386,732
1970	74,350	16	40,082	9	242,205	53	96,682	21	453,319
1971	100,737	21	43,223	9	228,570	48	102,664	22	475,194
1972	109,655	21	57,164	11	237,708	46	116,148	22	520,675
1973	131,149	21	48,960	8	328,348	52	128,367	20	636,824
1974	115,162	18	52,768	8	356,190	54	131,255	20	655,375
1975	84,651	15	68,965	12	288,340	49	141,173	24	583,129
1976	132,947	18	82,023	11	357,572	49	152,447	21	724,989
1977	83,171	11	82,583	11	403,311	54	183,256	24	752,321
1978	111,161	14	64,718	8	450,379	56	175,752	22	802,010
1979	86,007	11	72,772	9	413,601	54	198,373	26	770,753
1980	95,162	11	70,391	8	458,637	55	215,601	26	839,791
1981	88,111	11	57,495	7	435,776	54	227,297	28	808,679
1982	89,609	10	61,863	7	486,014	57	221,985	26	859,471
1983	66,221	6	63,667	6	679,258	64	259,642	24	1,068,788
1984	75,056	6	70,056	6	756,270	65	258,987	22	1,160,369
1985	77,636	8	74,764	7	601,266	59	261,792	26	1,015,458
1986	72,483	6	72,690	6	748,796	65	253,073	22	1,147,042
1987	66,976	6	87,871	8	681,459	60	306,290	27	1,142,596
1988	76,353	6	85,945	7	839,419	66	267,622	21	1,269,339
1989	88,911	7	87,140	7	815,106	62	317,115	24	1,308,272
1990	81,489	6	100,390	7	880,367	62	357,934	25	1,420,180
1991	62,572	4	85,633	5	1,106,718	67	399,564	24	1,654,487
1992	82,589	5	102,981	6	1,007,558	63	404,287	25	1,597,415
1993	77,496	5	87,884	6	915,646	62	389,386	26	1,470,412
1994	96,461	6	100,512	6	1,018,724	63	400,949	25	1,616,646
1995	91,765	6	92,362	6	1,051,323	65	385,034	24	1,620,484
1996	92,032	6	93,345	6	1,022,589	67	321,139	21	1,529,105
1997	113,874	7	121,668	7	965,188	59	440,185	27	1,640,915
1998	112,997	6	122,473	6	1,308,797	65	462,457	23	2,006,724
1999	131,227	7	122,128	7	1,174,824	64	402,610	22	1,830,789
2000	101,529	5	124,179	7	1,238,096	65	430,207	23	1,894,011
2001	117,069	7	115,745	6	1,136,330	63	425,110	24	1,794,254
2002	146,202	7	130,525	7	1,311,489	66	408,954	20	1,997,170
2003	124,869	6	116,956	6	1,314,804	66	440,870	22	1,997,498
2004	124,191	6	156,768	8	1,403,085	68	375,527	18	2,059,570
2005	100,369	5	138,155	6	1,527,540	69	436,181	20	2,202,245
2006	104,533	5	135,726	6	1,590,775	70	442,288	19	2,273,322
2007	95,240	4	143,059	6	1,726,702	72	431,814	18	2,396,815

Table 2. Catches of target tunas in the WCPFC Statistical Area, by gear type

YEAR	LONGLINE		POLE-AND-LINE		PURSE SEINE		TROLL		OTHER		TOTAL
	TONNES	%	TONNES	%	TONNES	%	TONNES	%	TONNES	%	
1960	129,874	54	73,800	31	5,224	2	0	0	31,195	13	240,093
1961	123,330	41	132,070	43	14,540	5	0	0	34,536	11	304,476
1962	128,804	38	157,412	46	18,875	6	0	0	34,947	10	340,038
1963	122,263	45	98,628	37	11,934	4	0	0	36,795	14	269,620
1964	102,481	32	143,323	45	29,012	9	0	0	41,158	13	315,974
1965	103,955	36	134,621	47	8,621	3	0	0	41,681	14	288,878
1966	145,278	34	218,900	51	16,913	4	0	0	46,853	11	427,944
1967	128,047	35	174,774	47	14,508	4	5	0	51,889	14	369,223
1968	120,136	32	183,954	50	15,143	4	14	0	52,020	14	371,267
1969	122,806	32	196,749	51	9,483	2	0	0	57,694	15	386,732
1970	141,360	31	225,988	50	20,950	5	50	0	64,971	14	453,319
1971	143,625	30	238,082	50	29,652	6	0	0	63,835	13	475,194
1972	161,533	31	242,645	47	34,565	7	268	0	81,664	16	520,675
1973	166,399	26	330,741	52	42,630	7	484	0	96,570	15	636,824
1974	145,192	22	370,399	57	36,754	6	898	0	102,132	16	655,375
1975	164,049	28	279,563	48	35,282	6	646	0	103,589	18	583,129
1976	198,013	27	382,527	53	47,992	7	25	0	96,432	13	724,989
1977	218,413	29	345,157	46	61,562	8	621	0	126,568	17	752,321
1978	212,059	26	407,382	51	60,635	8	1,686	0	120,248	15	802,010
1979	211,221	27	344,699	45	99,345	13	814	0	114,674	15	770,753
1980	227,707	27	395,646	47	120,890	14	1,489	0	94,059	11	839,791
1981	188,516	23	343,584	42	162,429	20	2,118	0	112,032	14	808,679
1982	177,765	21	309,802	36	254,702	30	2,552	0	114,650	13	859,471
1983	170,385	16	338,181	32	444,080	42	949	0	115,193	11	1,068,788
1984	157,072	14	422,512	36	469,266	40	3,124	0	108,395	9	1,160,369
1985	172,886	17	293,206	29	423,765	42	3,468	0	122,133	12	1,015,458
1986	163,964	14	368,730	32	487,754	43	2,284	0	124,310	11	1,147,042
1987	180,581	16	297,935	26	545,931	48	2,350	0	115,799	10	1,142,596
1988	200,281	16	324,805	26	605,649	48	4,671	0	133,933	11	1,269,339
1989	164,878	13	317,802	24	661,242	51	8,687	1	155,663	12	1,308,272
1990	184,185	13	250,390	18	796,948	56	7,220	1	181,437	13	1,420,180
1991	157,518	10	314,979	19	1,012,679	61	8,005	0	161,306	10	1,654,487
1992	193,757	12	282,598	18	987,751	62	6,845	0	126,464	8	1,597,415
1993	188,514	13	307,966	21	866,433	59	4,613	0	102,886	7	1,470,412
1994	214,641	13	271,071	17	987,549	61	7,494	0	135,891	8	1,616,646
1995	210,551	13	297,106	18	950,601	59	10,397	1	151,829	9	1,620,484
1996	200,673	13	251,053	16	909,963	60	11,071	1	156,345	10	1,529,105
1997	217,089	13	273,844	17	993,681	61	8,848	1	147,453	9	1,640,915
1998	236,632	12	282,965	14	1,309,065	65	9,970	0	168,092	8	2,006,724
1999	206,264	11	302,239	17	1,144,751	63	6,417	0	171,118	9	1,830,789
2000	226,127	12	261,937	14	1,198,398	63	9,472	1	198,077	10	1,894,011
2001	235,675	13	207,300	12	1,174,919	65	7,790	0	168,570	9	1,794,254
2002	258,099	13	217,121	11	1,328,432	67	7,397	0	186,121	9	1,997,170
2003	238,851	12	222,023	11	1,327,212	66	8,802	0	200,610	10	1,997,498
2004	264,465	13	203,903	10	1,411,661	69	7,362	0	172,179	8	2,059,570
2005	232,880	11	212,303	10	1,586,817	72	5,969	0	164,276	7	2,202,245
2006	248,281	11	217,736	10	1,627,568	72	4,812	0	174,926	8	2,273,322
2007	232,388	10	214,935	9	1,739,859	73	4,230	0	205,403	9	2,396,815

Table 3. Catches of target tunas in the WCPFC Statistical Area, by flag

YEAR	AUSTRALIA	CANADA	CHINA	COOK ISLANDS	FEDERATED STATES OF MICRONESIA	FIJI ISLANDS	FRENCH POLYNESIA	INDONESIA
1960	-	...	-	-	-	-	-	7,415
1961	-	...	-	-	-	-	-	8,054
1962	-	...	-	-	-	-	-	8,749
1963	-	...	-	-	-	-	-	9,505
1964	-	...	-	-	-	-	-	10,327
1965	-	...	-	-	-	-	-	11,223
1966	-	...	-	-	-	-	-	12,198
1967	-	...	-	-	-	-	-	13,260
1968	-	...	-	-	-	-	-	14,417
1969	-	...	-	-	-	-	-	15,677
1970	100	...	-	-	-	-	-	17,600
1971	100	...	-	-	-	-	-	18,100
1972	100	...	-	-	-	-	-	28,600
1973	100	...	-	-	-	-	-	32,500
1974	100	...	-	-	-	12	-	33,779
1975	2,000	...	-	-	-	11	...	34,378
1976	147	...	-	-	-	742	...	33,375
1977	131	...	-	-	-	1,711	...	37,235
1978	375	...	-	-	-	2,524	...	40,024
1979	100	...	-	-	-	3,494	696	50,973
1980	117	...	-	-	-	2,496	936	61,795
1981	357	...	-	-	-	5,836	1,001	68,809
1982	238	...	-	-	-	4,428	1,034	74,056
1983	230	...	-	-	-	3,741	836	84,532
1984	147	...	-	-	-	4,572	1,250	96,662
1985	18	...	-	-	-	3,946	836	101,905
1986	101	...	-	-	-	3,125	961	111,733
1987	1,455	...	-	-	-	3,889	878	124,175
1988	1,752	235	44	-	-	3,891	715	129,922
1989	2,836	235	144	-	-	5,189	856	145,320
1990	6,983	235	453	-	-	3,830	2,109	142,237
1991	9,380	235	1,007	-	11,338	5,298	2,335	168,844
1992	9,524	235	2,715	-	15,472	4,790	2,019	194,659
1993	7,212	235	6,419	-	16,908	4,966	2,387	173,969
1994	5,415	235	12,677	32	20,941	5,937	2,804	196,897
1995	6,288	259	10,586	55	6,759	7,009	3,343	204,837
1996	5,249	1,028	6,026	59	7,394	6,803	3,583	230,449
1997	7,550	1,122	3,664	0	8,254	4,354	4,564	211,816
1998	5,153	882	3,272	22	14,179	4,013	5,710	277,732
1999	7,551	418	7,515	56	10,881	4,075	5,200	296,242
2000	6,997	916	6,244	335	21,688	9,660	6,833	298,256
2001	5,279	591	9,947	206	17,646	11,309	7,736	264,852
2002	5,232	413	15,632	770	20,607	11,551	7,347	268,123
2003	5,809	440	42,207	2,462	30,828	10,854	6,309	251,591
2004	4,200	182	40,165	3,345	27,685	17,311	5,438	265,678
2005	3,095	84	61,529	3,247	27,786	11,975	5,041	280,422
2006	5,397	135	73,722	2,972	10,080	15,374	5,938	320,402
2007	3,920	27	69,795	2,820	15,439	10,751	6,808	322,170

Table 3 continued

YEAR	JAPAN	KIRIBATI	REPUBLIC OF KOREA	MARSHALL ISLANDS	MEXICO	NAURU	NEW CALEDONIA	NEW ZEALAND
1960	206,606	...	744	-	-	-	-	-
1961	269,191	...	385	-	-	-	-	-
1962	302,176	...	708	-	-	-	-	-
1963	228,717	...	1,955	-	-	-	-	-
1964	270,330	...	2,527	-	-	-	-	-
1965	232,798	...	7,078	-	-	-	-	-
1966	355,698	...	13,405	-	-	-	-	-
1967	281,451	...	14,469	-	-	-	-	5
1968	273,296	...	10,794	-	-	-	-	14
1969	284,806	...	17,077	-	-	-	-	...
1970	321,752	...	16,927	-	-	-	-	50
1971	316,348	...	16,541	-	-	-	-	...
1972	341,744	...	17,678	-	-	-	-	268
1973	417,598	...	25,938	-	-	-	-	484
1974	428,674	...	14,105	-	-	-	-	899
1975	357,454	...	29,343	-	-	-	-	647
1976	473,959	...	44,464	-	-	-	-	25
1977	457,534	...	43,722	-	-	-	-	621
1978	511,050	...	33,102	-	-	-	-	1,701
1979	465,567	...	41,915	-	-	-	-	830
1980	521,778	1,812	46,102	-	-	-	-	1,519
1981	457,869	2,376	33,326	-	-	-	229	2,111
1982	497,540	2,269	39,797	-	-	-	868	2,436
1983	550,003	3,406	37,822	-	468	-	461	6,565
1984	633,022	3,843	33,809	-	6,600	-	150	7,005
1985	509,071	2,531	44,868	-	0	-	281	5,713
1986	575,507	3,226	63,760	-	-	-	367	6,793
1987	498,264	2,246	92,018	-	-	-	1,102	5,035
1988	589,167	3,284	114,669	-	-	-	1,092	3,923
1989	514,881	4,094	140,927	-	-	-	871	10,323
1990	461,103	2,407	205,415	-	-	-	1,730	7,120
1991	479,107	2,036	248,802	-	-	-	1,536	7,765
1992	465,720	2,363	213,824	9	-	-	1,092	4,524
1993	516,007	2,104	150,165	137	-	-	1,294	4,415
1994	473,117	3,131	226,531	48	-	-	1,355	8,513
1995	480,115	5,423	206,176	22	-	-	1,274	8,147
1996	416,322	6,645	174,948	...	-	-	1,201	10,194
1997	506,652	7,020	188,667	-	-	-	977	10,451
1998	542,579	9,389	247,929	-	-	-	1,543	15,154
1999	480,839	9,793	173,490	-	-	-	1,616	10,141
2000	492,802	14,723	207,498	7,560	-	9	1,662	18,918
2001	438,060	5,399	216,691	35,774	-	11	1,718	17,533
2002	450,769	9,830	254,593	38,952	-	5	1,926	38,574
2003	468,032	6,895	221,079	37,875	-	20	2,007	30,614
2004	439,049	6,661	212,655	46,676	-	1	2,189	33,886
2005	480,483	9,165	237,353	56,164	-	0	2,114	27,917
2006	472,720	6,723	274,859	41,019	-	0	1,807	27,410
2007	453,547	18,020	278,482	57,344	-	0	1,770	32,905

Table 3 continued

YEAR	NIUE	PALAU	PAPUA NEW GUINEA	PHILIPPINES	RUSSIA	SAMOA	SOLOMON ISLANDS	SPAIN
1960	-	-	-	20,585	-	-	-	-
1961	-	-	-	21,735	-	-	-	-
1962	-	-	-	22,957	-	-	-	-
1963	-	-	-	24,252	-	-	-	-
1964	-	1,166	-	25,626	-	-	-	-
1965	-	2,670	-	27,084	-	-	-	-
1966	-	2,686	-	28,632	-	-	-	-
1967	-	3,406	-	30,275	-	-	-	-
1968	-	5,056	-	32,021	-	-	-	-
1969	-	4,762	-	33,875	-	-	-	-
1970	-	8,082	2,428	52,000	-	-	-	-
1971	-	2,143	16,974	57,200	-	-	4,711	-
1972	-	1,519	13,130	60,700	-	-	7,905	-
1973	-	2,350	28,216	70,900	-	-	6,624	-
1974	-	6,808	41,630	81,188	-	-	10,332	-
1975	-	6,269	17,369	84,450	-	-	7,094	-
1976	-	5,323	32,921	73,653	-	-	15,763	-
1977	-	4,012	24,115	118,149	-	-	12,202	-
1978	-	9,694	48,859	87,319	-	-	18,353	-
1979	-	5,688	26,857	94,308	-	-	24,289	-
1980	-	6,576	33,994	77,505	-	-	23,241	-
1981	-	9,411	31,412	94,616	-	-	22,832	-
1982	-	4,053	-	104,047	-	-	20,071	-
1983	-	-	-	118,529	-	-	33,432	-
1984	-	-	2,744	105,217	-	-	35,615	-
1985	-	97	9,300	137,308	2,111	-	29,997	-
1986	-	131	-	145,097	4,175	-	42,249	-
1987	-	161	-	141,461	8,995	-	29,437	-
1988	-	157	-	124,786	6,189	-	40,513	-
1989	-	77	-	151,124	4,935	-	34,262	-
1990	-	88	-	204,808	2,126	-	26,612	-
1991	-	-	-	224,530	3,715	-	46,888	-
1992	-	213	-	167,045	2,126	-	30,558	-
1993	-	206	8	135,882	8,714	300	28,006	-
1994	-	184	1,381	175,561	6,722	736	33,925	-
1995	-	100	12,700	202,176	...	2,151	49,665	-
1996	-	100	10,572	208,571	...	2,375	38,697	-
1997	-	107	19,400	212,483	...	5,498	47,442	-
1998	-	100	50,727	239,744	...	5,925	48,378	-
1999	-	100	38,980	230,554	...	5,056	45,662	8,613
2000	-	240	68,818	238,794	...	5,375	12,929	12,896
2001	-	62	92,806	214,294	...	5,503	17,217	2,402
2002	-	4	124,705	237,100	...	4,775	18,707	214
2003	-	20	159,622	297,664	...	2,663	27,424	0
2004	-	35	202,626	306,914	...	1,820	24,138	5,587
2005	103	0	223,160	312,985	...	1,541	20,098	3,453
2006	0	0	211,432	341,439	...	2,505	30,433	11,653
2007	0	0	243,364	389,015	...	3,519	22,405	19,966

Table 3 continued

YEAR	CHINESE TAIPEI	TONGA	TUVALU	UNITED STATES OF AMERICA	VANUATU	EASTERN PACIFIC NEI	TOTAL
1960	4,035	-	-	708	-	-	240,093
1961	4,485	-	-	626	-	-	304,476
1962	4,779	-	-	669	-	-	340,038
1963	4,642	-	-	549	-	-	269,620
1964	5,482	-	-	516	-	-	315,974
1965	7,524	-	-	501	-	-	288,878
1966	14,812	-	-	513	-	-	427,944
1967	25,911	-	-	446	-	-	369,223
1968	35,302	-	-	367	-	-	371,267
1969	30,096	-	-	439	-	-	386,732
1970	33,887	-	-	493	-	-	453,319
1971	42,640	-	-	437	-	-	475,194
1972	48,612	-	-	419	-	-	520,675
1973	51,807	-	-	307	-	-	636,824
1974	37,501	-	-	347	-	-	655,375
1975	43,804	-	-	310	-	-	583,129
1976	43,546	-	-	1,071	-	0	724,989
1977	50,858	-	-	1,359	-	672	752,321
1978	46,606	-	-	1,477	-	926	802,010
1979	43,450	-	-	11,852	-	734	770,753
1980	48,323	-	-	13,483	-	114	839,791
1981	37,900	-	-	40,496	-	98	808,679
1982	32,644	205	216	75,494	-	75	859,471
1983	44,458	208	337	181,593	-	2,167	1,068,788
1984	56,407	218	540	162,380	-	10,188	1,160,369
1985	55,987	233	4	110,031	-	1,221	1,015,458
1986	65,658	252	390	123,517	-	0	1,147,042
1987	87,072	299	632	145,072	-	405	1,142,596
1988	125,254	276	1,090	122,380	-	0	1,269,339
1989	143,475	235	149	148,339	-	0	1,308,272
1990	181,341	192	90	171,301	-	0	1,420,180
1991	216,405	197	29	225,040	-	0	1,654,487
1992	271,051	225	8	209,243	-	0	1,597,415
1993	207,231	329	-	203,518	-	0	1,470,412
1994	223,590	411	-	215,683	820	0	1,616,646
1995	228,798	461	-	176,201	7,276	663	1,620,484
1996	226,436	579	-	158,306	11,497	2,071	1,529,105
1997	217,026	663	-	154,213	26,164	2,828	1,640,915
1998	306,849	833	-	184,352	39,423	2,836	2,006,724
1999	252,529	1,084	-	191,813	46,162	2,419	1,830,789
2000	280,692	1,161	-	135,448	37,545	6,012	1,894,011
2001	285,928	1,733	-	128,549	11,917	1,091	1,794,254
2002	318,806	1,672	-	136,222	28,031	2,610	1,997,170
2003	257,683	971	-	101,043	28,443	4,943	1,997,498
2004	262,567	388	-	79,446	65,054	5,874	2,059,570
2005	245,233	629	-	97,738	86,564	4,366	2,202,245
2006	255,874	759	-	80,893	75,410	4,366	2,273,322
2007	276,456	861	-	87,483	75,582	4,366	2,396,815

Table 4. Catches of albacore in the Pacific Ocean. Symbols: ‘-’ = no effort, hence no catch; ‘0’ = effort, but no catch.

YEAR	SOUTH PACIFIC OCEAN					NORTH PACIFIC OCEAN					TOTAL
	LONGLINE	POLE-AND-LINE	TROLL	OTHER	SUBTOTAL	LONGLINE	POLE-AND-LINE	TROLL	OTHER	SUBTOTAL	
1960	22,248	45	-	-	22,293	17,373	25,156	20,105	769	63,403	85,696
1961	23,742	0	-	-	23,742	17,442	21,476	12,059	1,631	52,608	76,350
1962	35,219	0	-	-	35,219	15,771	9,814	19,753	1,926	47,264	82,483
1963	31,095	16	-	-	31,111	13,471	28,852	25,145	1,438	68,906	100,017
1964	22,824	0	-	-	22,824	15,488	27,269	18,391	1,271	62,419	85,243
1965	25,455	0	-	-	25,455	13,965	41,908	16,557	863	73,293	98,748
1966	38,661	0	-	-	38,661	25,329	24,430	15,377	1,285	66,421	105,082
1967	43,952	0	5	-	43,957	29,516	34,594	17,975	1,316	83,401	127,358
1968	32,368	0	14	-	32,382	24,670	21,503	21,462	2,327	69,962	102,344
1969	24,805	0	0	-	24,805	18,654	34,908	20,192	1,838	75,592	100,397
1970	34,775	100	50	-	34,925	17,747	28,679	21,422	1,656	69,504	104,429
1971	38,530	100	0	-	38,630	13,243	55,028	22,272	2,436	92,979	131,609
1972	39,131	122	268	-	39,521	16,121	64,319	27,521	1,659	109,620	149,141
1973	46,705	141	484	-	47,330	16,902	71,003	17,053	2,006	106,964	154,294
1974	33,039	112	898	-	34,049	13,963	78,341	21,509	1,384	115,197	149,246
1975	22,849	105	646	-	23,600	14,293	55,395	19,043	1,219	89,950	113,550
1976	28,957	100	25	-	29,082	17,945	88,036	16,183	3,217	125,381	154,463
1977	38,019	100	621	-	38,740	17,383	33,431	10,022	2,264	63,100	101,840
1978	32,890	100	1,686	-	34,676	13,573	60,827	16,636	8,064	99,100	133,776
1979	26,162	100	814	-	27,076	14,632	44,965	7,302	4,211	71,110	98,186
1980	30,972	101	1,468	-	32,541	15,596	47,124	7,768	4,707	75,195	107,736
1981	32,694	0	2,085	5	34,784	18,701	28,174	12,837	11,526	71,238	106,022
1982	28,347	1	2,434	6	30,788	17,754	30,039	6,713	13,963	68,469	99,257
1983	24,309	0	744	39	25,092	16,074	21,705	9,584	7,676	55,039	80,131
1984	20,340	2	2,773	1,589	24,704	15,662	27,043	9,354	18,670	70,729	95,433
1985	27,138	0	3,253	1,937	32,328	14,649	22,212	6,471	14,947	58,279	90,607
1986	32,641	0	2,003	1,946	36,590	13,140	16,528	4,738	10,938	45,344	81,934
1987	21,970	9	2,134	930	25,043	15,353	19,240	2,870	11,509	48,972	74,015
1988	28,284	0	4,296	5,283	37,863	15,453	6,814	4,367	18,968	45,602	83,465
1989	18,224	0	8,370	21,968	48,562	13,997	8,683	2,000	19,986	44,666	93,228
1990	19,368	245	6,975	7,538	34,126	16,260	8,647	2,905	26,159	53,971	88,097
1991	23,385	14	7,805	1,489	32,693	17,708	7,103	1,984	10,798	37,593	70,286
1992	30,592	11	6,578	65	37,246	19,689	13,888	4,934	16,580	55,091	92,337
1993	30,230	74	4,296	70	34,670	30,899	12,797	6,748	4,112	54,556	89,226
1994	34,119	67	7,164	89	41,439	30,742	26,389	13,134	3,486	73,751	115,190
1995	29,341	139	7,716	104	37,300	32,873	21,061	10,758	1,724	66,416	103,716
1996	23,817	30	7,379	156	31,382	39,289	20,296	21,849	1,070	82,504	113,886
1997	27,104	21	4,679	133	31,937	47,885	32,311	18,674	2,736	101,606	133,543
1998	37,797	36	6,280	85	44,198	47,827	23,005	20,074	3,236	94,142	138,340
1999	31,910	138	3,419	74	35,541	46,061	50,429	13,853	11,155	121,498	157,039
2000	33,968	102	6,269	139	40,478	40,870	21,619	15,245	4,985	82,719	123,196
2001	48,638	37	5,142	199	54,016	36,288	29,569	16,738	3,002	85,597	139,613
2002	60,596	18	4,574	152	65,340	32,447	48,832	16,323	6,219	103,821	169,161
2003	55,643	12	5,612	138	61,405	31,468	36,173	21,886	3,184	92,711	154,116
2004	60,643	110	4,531	124	65,408	24,235	32,380	22,173	8,977	87,765	153,173
2005	56,717	22	3,564	137	60,440	28,183	16,199	14,724	3,183	62,289	122,729
2006	66,172	26	2,878	197	69,273	28,698	15,411	18,948	1,136	64,193	133,466
2007	57,188	26	2,093	188	59,495	30,301	15,411	18,153	1,136	65,001	124,496

Table 5. Catches of bigeye in the Pacific Ocean. Symbols: '...' = missing data; '-' = no effort, hence no catch; '0' = effort, but no catch.

YEAR	WESTERN AND CENTRAL PACIFIC OCEAN					EASTERN PACIFIC OCEAN					TOTAL
	LONGLINE	POLE-AND-LINE	PURSE SEINE	OTHER	SUBTOTAL	LONGLINE	POLE-AND-LINE	PURSE SEINE	OTHER	SUBTOTAL	
1960	43,467	1,500	58	...	45,025	17,722	0	24	...	17,746	62,771
1961	37,517	1,800	63	...	39,380	52,431	106	105	-	52,642	92,022
1962	35,895	800	173	...	36,868	45,050	318	302	-	45,670	82,538
1963	42,540	1,800	6	...	44,346	66,617	140	...	-	66,757	111,103
1964	30,978	1,143	231	28	32,380	46,279	127	...	-	46,406	78,786
1965	29,844	1,254	201	30	31,329	29,164	231	...	-	29,395	60,724
1966	31,949	1,108	9	86	33,152	34,800	292	210	-	35,302	68,454
1967	32,791	2,803	60	253	35,907	35,878	1,305	1,697	-	38,880	74,787
1968	27,199	2,272	183	204	29,858	35,233	115	4,618	-	39,966	69,824
1969	32,371	1,675	48	62	34,156	52,071	0	1,093	-	53,164	87,320
1970	34,348	1,589	726	2,802	39,465	33,341	0	2,411	-	35,752	75,217
1971	36,798	931	876	3,057	41,662	29,804	75	4,359	18	34,256	75,918
1972	49,334	1,762	865	3,497	55,458	36,128	126	3,971	-	40,225	95,683
1973	40,285	1,258	1,078	4,212	46,833	50,777	236	3,342	-	54,355	101,188
1974	41,787	1,039	1,389	4,687	48,902	36,961	0	1,554	-	38,515	87,417
1975	57,623	1,334	1,328	4,815	65,100	41,733	36	6,574	-	48,343	113,443
1976	68,514	3,423	1,312	3,963	77,212	54,290	75	17,212	7	71,584	148,796
1977	66,249	3,325	1,587	5,588	76,749	74,086	2	11,161	-	85,249	161,998
1978	50,375	3,337	1,151	3,993	58,856	70,659	0	18,539	-	89,198	148,054
1979	57,186	2,540	2,031	4,497	66,254	55,435	0	12,097	1	67,533	133,787
1980	56,553	2,278	2,160	4,096	65,087	64,335	0	21,938	130	86,403	151,490
1981	41,564	2,596	4,268	4,808	53,236	53,416	0	14,921	7	68,344	121,580
1982	45,204	4,108	5,251	4,618	59,181	53,365	42	6,939	3	60,349	119,530
1983	41,412	4,055	9,442	4,900	59,809	60,043	39	4,575	37	64,694	124,503
1984	46,429	3,465	9,615	5,087	64,596	46,394	2	8,861	11	55,268	119,864
1985	51,326	4,326	6,944	5,993	68,589	66,325	2	6,056	15	72,398	140,987
1986	46,741	2,865	7,712	6,309	63,627	102,425	0	2,686	74	105,185	168,812
1987	59,357	3,134	11,215	5,480	79,186	100,121	0	1,177	49	101,347	180,533
1988	49,663	4,125	8,220	6,350	68,358	72,758	5	1,535	15	74,313	142,671
1989	53,173	4,298	12,629	6,897	76,997	70,963	0	2,030	1	72,994	149,991
1990	65,239	3,918	12,411	8,788	90,356	98,871	0	5,921	59	104,851	195,207
1991	47,244	1,991	13,750	10,489	73,474	104,195	31	4,870	25	109,121	182,595
1992	61,971	1,757	19,151	8,153	91,032	84,808	0	7,179	13	92,000	183,032
1993	56,366	2,331	13,929	7,039	79,665	72,498	0	9,657	35	82,190	161,855
1994	66,104	2,951	10,630	9,977	89,662	71,360	0	34,899	806	107,065	196,727
1995	56,454	3,776	12,077	10,750	83,057	58,269	0	45,321	1,369	104,959	188,016
1996	46,005	3,864	23,285	11,886	85,040	46,958	0	61,311	748	109,017	194,057
1997	58,440	3,611	42,633	9,533	114,217	52,580	0	64,272	20	116,872	231,089
1998	72,648	2,446	27,415	11,096	113,605	46,375	0	44,129	628	91,132	204,737
1999	65,040	2,176	37,064	11,419	115,699	36,450	0	51,158	538	88,146	203,845
2000	60,592	2,988	37,525	12,676	113,781	47,605	0	94,640	253	142,498	256,279
2001	62,905	2,349	29,141	11,490	105,885	68,755	0	61,156	19	129,930	235,815
2002	78,357	2,805	26,664	12,619	120,445	74,424	0	57,440	12	131,876	252,321
2003	68,928	1,778	25,519	13,023	109,248	59,776	0	54,174	21	113,971	223,219
2004	87,479	9,313	29,865	19,832	146,489	43,479	0	67,592	194	111,265	257,754
2005	70,662	6,757	35,531	17,353	130,303	41,720	0	69,826	25	111,571	241,874
2006	79,772	8,606	30,063	12,594	131,034	35,363	0	83,978	36	119,377	250,411
2007	78,184	8,559	38,149	13,120	138,012	25,560	0	61,434	0	86,994	225,006

Table 6. Catches of skipjack in the Pacific Ocean

YEAR	WESTERN AND CENTRAL PACIFIC OCEAN					EASTERN PACIFIC OCEAN				TOTAL
	LONGLINE	POLE-AND-LINE	PURSE SEINE	OTHER	SUBTOTAL	POLE-AND-LINE	PURSE SEINE	OTHER	SUBTOTAL	
1960	0	70,428	3,728	15,782	89,938	28,929	16,649	481	46,059	135,997
1961	0	127,011	11,693	18,032	156,736	28,995	45,706	428	75,129	231,865
1962	4	152,387	11,674	17,559	181,624	17,660	58,939	503	77,102	258,726
1963	0	94,757	9,592	18,354	122,703	17,138	82,404	2,389	101,931	224,634
1964	5	137,106	25,006	20,754	182,871	10,306	51,759	3,609	65,674	248,545
1965	11	129,933	4,657	20,585	155,186	19,867	64,056	1,046	84,969	240,155
1966	52	215,600	10,949	22,884	249,485	14,083	50,264	1,960	66,307	315,792
1967	101	168,846	10,931	24,910	204,788	18,016	104,928	5,038	127,982	332,770
1968	60	162,379	7,587	24,924	194,950	7,340	59,642	10,128	77,110	272,060
1969	124	160,212	5,057	30,065	195,458	6,970	46,020	11,904	64,894	260,352
1970	1,595	197,873	10,585	32,139	242,192	7,470	47,466	7,234	62,170	304,362
1971	1,440	180,945	17,034	29,116	228,535	11,679	94,502	6,702	112,883	341,418
1972	1,524	172,827	21,664	41,673	237,688	6,556	29,804	1,144	37,504	275,192
1973	1,838	253,217	23,299	49,971	328,325	9,135	39,247	638	49,020	377,345
1974	2,088	289,202	15,630	49,234	356,154	7,629	79,418	510	87,557	443,711
1975	1,893	218,271	18,409	49,741	288,314	13,848	120,358	526	134,732	423,046
1976	2,056	276,582	28,495	50,399	357,532	11,256	124,957	705	136,918	494,450
1977	3,107	294,641	40,797	64,746	403,291	7,522	84,603	1,960	94,085	497,376
1978	3,219	331,401	44,109	71,636	450,365	6,047	172,294	1,324	179,665	630,030
1979	2,175	285,859	65,825	59,738	413,597	6,346	133,695	1,462	141,503	555,100
1980	630	333,457	82,700	41,836	458,623	5,225	130,912	1,965	138,102	596,725
1981	754	294,292	94,987	45,724	435,757	5,906	119,165	930	126,001	561,758
1982	1,013	262,244	173,901	48,790	485,948	3,760	100,499	410	104,669	590,617
1983	2,143	299,762	324,900	52,298	679,103	4,387	56,851	737	61,975	741,078
1984	867	379,474	337,471	38,171	755,983	2,884	59,859	868	63,611	819,594
1985	1,100	250,010	308,957	41,045	601,112	946	50,829	227	52,002	653,114
1986	1,434	336,695	368,138	42,305	748,572	1,921	65,634	190	67,745	816,317
1987	2,320	262,467	375,265	41,230	681,282	2,233	64,019	214	66,466	747,748
1988	1,930	301,031	497,052	39,100	839,113	4,325	87,113	689	92,127	931,240
1989	2,502	289,706	482,785	39,864	814,857	2,940	94,934	1,047	98,921	913,778
1990	1,290	224,592	603,347	50,957	880,186	823	74,369	1,915	77,107	957,293
1991	1,539	292,950	777,350	34,728	1,106,567	1,717	62,228	1,945	65,890	1,172,457
1992	1,148	251,717	725,134	29,390	1,007,389	1,957	84,283	1,054	87,294	1,094,683
1993	1,032	280,066	609,304	25,065	915,467	3,772	83,830	2,317	89,919	1,005,386
1994	2,288	227,921	756,558	31,703	1,018,470	3,240	70,126	804	74,170	1,092,640
1995	2,649	257,147	750,275	40,801	1,050,872	5,253	127,047	1,988	134,288	1,185,160
1996	5,999	211,408	770,131	34,534	1,022,072	2,555	103,973	1,313	107,841	1,129,913
1997	6,046	225,612	691,992	41,029	964,679	3,260	153,456	231	156,947	1,121,626
1998	6,120	244,447	1,015,568	42,138	1,308,273	1,684	140,631	531	142,846	1,451,119
1999	5,288	235,739	894,077	39,240	1,174,344	2,044	261,565	1,594	265,203	1,439,547
2000	6,566	223,552	954,678	52,820	1,237,616	231	204,307	135	204,673	1,442,289
2001	6,579	163,328	927,871	37,954	1,135,732	448	143,561	1,248	145,257	1,280,989
2002	5,189	152,487	1,113,638	39,716	1,311,030	616	153,303	380	154,299	1,465,329
2003	5,842	172,157	1,088,184	48,162	1,314,345	638	274,529	3,411	278,578	1,592,923
2004	6,171	146,801	1,194,474	54,517	1,401,964	528	198,664	1,818	201,010	1,602,974
2005	3,430	174,842	1,290,249	58,663	1,527,184	1,299	261,780	2,011	265,090	1,792,274
2006	4,045	175,046	1,349,769	60,996	1,589,856	435	297,408	1,212	299,055	1,888,911
2007	3,621	173,362	1,472,047	76,619	1,725,649	276	210,620	872	211,768	1,937,417

Table 7. Catches of yellowfin in the Pacific Ocean. Symbols: ‘...’ = missing data; ‘-’ = no effort, hence no catch; ‘0’ = effort, but no catch.

YEAR	WESTERN AND CENTRAL PACIFIC OCEAN					EASTERN PACIFIC OCEAN					TOTAL
	LONGLINE	POLE-AND-LINE	PURSE SEINE	OTHER	SUBTOTAL	LONGLINE	POLE-AND-LINE	PURSE SEINE	OTHER	SUBTOTAL	
1960	55,020	1,872	1,438	15,337	73,667	5,934	22,151	79,425	458	107,968	181,635
1961	53,166	3,259	2,777	16,236	75,438	12,500	15,220	80,058	949	108,727	184,165
1962	55,547	4,225	6,975	17,197	83,944	10,211	11,052	56,271	706	78,240	162,184
1963	53,185	2,071	2,277	18,223	75,756	18,973	7,041	48,004	688	74,706	150,462
1964	45,241	5,074	3,647	20,186	74,148	16,975	3,989	78,318	738	100,020	174,168
1965	45,487	3,434	3,752	20,956	73,629	15,620	6,983	65,348	312	88,263	161,892
1966	61,623	2,192	5,844	23,409	93,068	9,097	5,302	68,982	507	83,888	176,956
1967	35,720	3,125	3,428	26,295	68,568	9,285	4,512	65,442	1,534	80,773	149,341
1968	45,572	2,706	7,106	26,050	81,434	14,986	4,307	86,542	3,241	109,076	190,510
1969	51,372	2,714	3,857	26,608	84,551	15,329	7,195	113,665	1,866	138,055	222,606
1970	55,481	2,141	9,322	29,413	96,357	12,643	4,260	139,385	4,850	161,138	257,495
1971	56,927	2,855	10,840	31,203	101,825	8,013	5,300	104,863	2,482	120,658	222,483
1972	60,251	7,465	11,759	35,749	115,224	16,859	6,060	164,297	1,060	188,276	303,500
1973	61,818	7,458	16,900	41,718	127,894	11,697	3,933	194,200	661	210,491	338,385
1974	57,490	6,582	19,574	46,983	130,629	7,190	8,188	191,626	1,230	208,234	338,863
1975	68,416	7,801	15,386	48,524	140,127	10,640	5,629	183,028	567	199,864	339,991
1976	76,363	17,186	17,076	40,615	151,240	15,632	3,280	215,108	358	234,378	385,618
1977	92,680	15,257	18,509	55,076	181,522	12,355	1,841	184,922	248	199,366	380,888
1978	108,555	12,767	14,260	38,396	173,978	10,188	3,888	158,801	1,103	173,980	347,958
1979	105,065	11,638	31,364	46,328	194,395	11,473	4,789	170,650	212	187,124	381,519
1980	120,373	13,168	35,701	43,848	213,090	13,477	1,481	143,042	862	158,862	371,952
1981	93,125	19,270	62,922	50,424	225,741	7,999	1,477	168,234	800	178,510	404,251
1982	84,014	13,835	74,989	48,119	220,957	10,961	1,538	114,755	280	127,534	348,491
1983	83,662	13,266	109,388	50,750	257,066	10,895	4,007	83,929	849	99,680	356,746
1984	70,258	13,558	118,800	53,526	256,142	10,345	2,991	135,785	344	149,465	405,607
1985	73,966	18,156	106,331	60,971	259,424	13,198	1,070	211,459	212	225,939	485,363
1986	62,614	13,074	110,362	64,556	250,606	22,808	2,537	260,512	214	286,071	536,677
1987	74,092	13,243	158,246	57,941	303,522	18,911	5,107	262,008	138	286,164	589,686
1988	84,802	13,433	99,169	65,544	262,948	14,660	3,723	277,293	752	296,428	559,376
1989	65,523	15,169	163,307	69,658	313,657	17,032	4,145	277,996	263	299,436	613,093
1990	71,024	13,103	179,195	90,120	353,442	34,633	2,676	263,253	960	301,522	654,964
1991	56,169	12,921	218,927	106,550	394,567	30,899	2,856	231,257	958	265,970	660,537
1992	69,828	15,225	239,362	76,464	400,879	18,646	3,789	228,121	1,958	252,514	653,393
1993	64,031	12,698	240,311	69,525	386,565	24,009	4,951	219,492	3,034	251,486	638,051
1994	70,440	13,743	218,335	93,025	395,543	30,026	3,625	208,408	1,487	243,546	639,089
1995	78,634	15,063	187,072	99,786	380,555	20,596	1,268	215,434	2,066	239,364	619,919
1996	75,319	15,479	115,966	109,483	316,247	16,608	3,762	238,607	1,639	260,616	576,863
1997	69,535	12,362	257,988	96,224	436,109	22,163	4,418	244,878	600	272,059	708,168
1998	64,279	13,110	264,528	114,422	456,339	15,336	5,085	253,959	1,529	275,909	732,248
1999	58,168	13,817	206,738	119,944	398,667	11,682	1,783	281,920	2,706	298,091	696,758
2000	74,472	13,745	203,787	132,153	424,157	23,855	2,431	255,231	1,109	282,626	706,783
2001	72,355	12,163	216,933	118,690	420,141	29,608	3,916	382,702	520	416,746	836,887
2002	72,683	13,357	184,828	133,109	403,977	25,565	950	412,507	551	439,573	843,550
2003	72,618	11,962	212,882	139,015	436,478	25,174	470	381,107	1,145	407,896	844,374
2004	78,720	14,837	180,122	97,353	371,032	18,770	1,884	269,597	627	290,878	661,910
2005	69,482	14,547	260,187	87,642	431,859	11,958	1,822	267,599	1,852	283,231	715,090
2006	73,493	18,036	247,372	100,831	439,731	8,739	686	166,330	1,458	177,213	616,944
2007	68,590	17,588	228,329	115,157	429,664	961	894	168,952	243	171,050	600,714

Table 8. Catches of albacore, bigeye, skipjack and yellowfin in the WCPO

YEAR	ALBACORE		BIGEYE		SKIPJACK		YELLOWFIN		TOTAL
	TONNES	%	TONNES	%	TONNES	%	TONNES	%	
1960	31,463	13	45,025	19	89,938	37	73,667	31	240,093
1961	32,922	11	39,380	13	156,736	51	75,438	25	304,476
1962	37,602	11	36,868	11	181,624	53	83,944	25	340,038
1963	26,815	10	44,346	16	122,703	46	75,756	28	269,620
1964	26,523	8	32,380	10	182,871	58	74,148	23	315,922
1965	28,713	10	31,329	11	155,186	54	73,629	25	288,857
1966	52,069	12	33,152	8	249,485	58	93,068	22	427,774
1967	55,314	15	35,907	10	204,788	56	68,568	19	364,577
1968	61,112	17	29,858	8	194,950	53	81,434	22	367,354
1969	71,137	18	34,156	9	195,458	51	84,551	22	385,302
1970	71,496	16	39,465	9	242,192	54	96,357	21	449,510
1971	96,125	21	41,662	9	228,535	49	101,825	22	468,147
1972	106,697	21	55,458	11	237,688	46	115,224	22	515,067
1973	129,538	20	46,833	7	328,325	52	127,894	20	632,590
1974	112,827	17	48,902	8	356,154	55	130,629	20	648,512
1975	83,864	15	65,100	11	288,314	50	140,127	24	577,405
1976	131,620	18	77,212	11	357,532	50	151,240	21	717,604
1977	79,436	11	76,749	10	403,291	54	181,522	24	740,998
1978	105,771	13	58,856	7	450,365	57	173,978	22	788,970
1979	84,878	11	66,254	9	413,597	54	194,395	26	759,124
1980	94,129	11	65,087	8	458,623	55	213,090	26	830,929
1981	86,401	11	53,236	7	435,757	54	225,741	28	801,135
1982	86,960	10	59,181	7	485,948	57	220,957	26	853,046
1983	64,345	6	59,809	6	679,103	64	257,066	24	1,060,323
1984	73,968	6	64,596	6	755,983	66	256,142	22	1,150,689
1985	76,610	8	68,589	7	601,112	60	259,424	26	1,005,735
1986	71,771	6	63,627	6	748,572	66	250,606	22	1,134,576
1987	63,956	6	79,186	7	681,282	60	303,522	27	1,127,946
1988	70,707	6	68,358	6	839,113	68	262,948	21	1,241,126
1989	85,350	7	76,997	6	814,857	63	313,657	24	1,290,861
1990	78,630	6	90,356	6	880,186	63	353,442	25	1,402,614
1991	60,722	4	73,474	4	1,106,567	68	394,567	24	1,635,330
1992	70,643	4	91,032	6	1,007,389	64	400,879	26	1,569,943
1993	71,746	5	79,665	5	915,467	63	386,565	27	1,453,443
1994	91,719	6	89,662	6	1,018,470	64	395,543	25	1,595,394
1995	89,889	6	83,057	5	1,050,872	66	380,555	24	1,604,373
1996	89,780	6	85,040	6	1,022,072	68	316,247	21	1,513,139
1997	110,787	7	114,217	7	964,679	59	436,109	27	1,625,792
1998	107,922	5	113,605	6	1,308,273	66	456,339	23	1,986,139
1999	127,614	7	115,699	6	1,174,344	65	398,667	22	1,816,324
2000	99,274	5	113,781	6	1,237,616	66	424,157	23	1,874,828
2001	113,531	6	105,885	6	1,135,732	64	420,141	24	1,775,289
2002	141,081	7	120,445	6	1,311,030	66	403,977	20	1,976,533
2003	113,563	6	109,248	6	1,314,345	67	436,478	22	1,973,633
2004	117,284	6	146,489	7	1,401,964	69	371,032	18	2,036,768
2005	96,750	4	130,303	6	1,527,184	70	431,859	20	2,186,096
2006	101,316	4	131,034	6	1,589,856	70	439,731	19	2,261,937
2007	92,600	4	138,012	6	1,725,649	72	429,664	18	2,385,925

Table 9. Catches of albacore, bigeye, skipjack and yellowfin in the EPO

YEAR	ALBACORE		BIGEYE		SKIPJACK		YELLOWFIN		TOTAL
	TONNES	%	TONNES	%	TONNES	%	TONNES	%	
1960	23,292	12	17,746	9	46,059	24	107,968	55	195,065
1961	15,862	6	52,642	21	75,129	30	108,727	43	252,360
1962	22,659	10	45,670	20	77,102	34	78,240	35	223,671
1963	29,799	11	66,757	24	101,931	37	74,706	27	273,193
1964	22,586	10	46,406	20	65,674	28	100,020	43	234,686
1965	17,939	8	29,395	13	84,969	39	88,263	40	220,566
1966	17,938	9	35,302	17	66,307	33	83,888	41	203,435
1967	22,524	8	38,880	14	127,982	47	80,773	30	270,159
1968	26,249	10	39,966	16	77,110	31	109,076	43	252,401
1969	22,646	8	53,164	19	64,894	23	138,055	50	278,759
1970	26,809	9	35,752	13	62,170	22	161,138	56	285,869
1971	24,517	8	34,256	12	112,883	39	120,658	41	292,314
1972	29,548	10	40,225	14	37,504	13	188,276	64	295,553
1973	18,763	6	54,355	16	49,020	15	210,491	63	332,629
1974	25,257	7	38,515	11	87,557	24	208,234	58	359,563
1975	23,051	6	48,343	12	134,732	33	199,864	49	405,990
1976	20,577	4	71,584	15	136,918	30	234,378	51	463,457
1977	24,024	6	85,249	21	94,085	23	199,366	50	402,724
1978	31,108	7	89,198	19	179,665	38	173,980	37	473,951
1979	10,953	3	67,533	17	141,503	35	187,124	46	407,113
1980	11,569	3	86,403	22	138,102	35	158,862	40	394,936
1981	20,283	5	68,344	17	126,001	32	178,510	45	393,138
1982	12,522	4	60,349	20	104,669	34	127,534	42	305,074
1983	15,729	6	64,694	27	61,975	26	99,680	41	242,078
1984	21,857	8	55,268	19	63,611	22	149,465	52	290,201
1985	14,841	4	72,398	20	52,002	14	225,939	62	365,180
1986	11,284	2	105,185	22	67,745	14	286,071	61	470,285
1987	12,977	3	101,347	22	66,466	14	286,164	61	466,954
1988	15,771	3	74,313	16	92,127	19	296,428	62	478,639
1989	9,501	2	72,994	15	98,921	21	299,436	62	480,852
1990	10,850	2	104,851	21	77,107	16	301,522	61	494,330
1991	11,481	3	109,121	24	65,890	15	265,970	59	452,462
1992	23,075	5	92,000	20	87,294	19	252,514	56	454,883
1993	15,605	4	82,190	19	89,919	20	251,486	57	439,200
1994	20,618	5	107,065	24	74,170	17	243,546	55	445,399
1995	14,075	3	104,959	21	134,288	27	239,364	49	492,686
1996	16,112	3	109,017	22	107,841	22	260,616	53	493,586
1997	17,279	3	116,872	21	156,947	28	272,059	48	563,157
1998	25,913	5	91,132	17	142,846	27	275,909	51	535,800
1999	26,464	4	88,146	13	265,203	39	298,091	44	677,904
2000	23,275	4	142,498	22	204,673	31	282,626	43	653,072
2001	33,336	5	129,930	18	145,257	20	416,746	57	725,269
2002	30,154	4	131,876	17	154,299	20	439,573	58	755,902
2003	45,538	5	113,971	13	278,578	33	407,896	48	845,983
2004	40,834	6	111,265	17	201,010	31	290,878	45	643,987
2005	24,604	4	111,571	16	265,090	39	283,231	41	684,496
2006	30,393	5	119,377	19	299,055	48	177,213	28	626,038
2007	8,587	2	86,994	18	211,768	44	171,050	36	478,399

Table 10. Catches of albacore, bigeye, skipjack and yellowfin in the Pacific Ocean

YEAR	ALBACORE		BIGEYE		SKIPJACK		YELLOWFIN		TOTAL
	TONNES	%	TONNES	%	TONNES	%	TONNES	%	
1960	54,755	13	62,771	14	135,997	31	181,635	42	435,158
1961	48,784	9	92,022	17	231,865	42	184,165	33	556,836
1962	60,261	11	82,538	15	258,726	46	162,184	29	563,709
1963	56,614	10	111,103	20	224,634	41	150,462	28	542,813
1964	49,109	9	78,786	14	248,545	45	174,168	32	550,608
1965	46,652	9	60,724	12	240,155	47	161,892	32	509,423
1966	70,007	11	68,454	11	315,792	50	176,956	28	631,209
1967	77,838	12	74,787	12	332,770	52	149,341	24	634,736
1968	87,361	14	69,824	11	272,060	44	190,510	31	619,755
1969	93,783	14	87,320	13	260,352	39	222,606	34	664,061
1970	98,305	13	75,217	10	304,362	41	257,495	35	735,379
1971	120,642	16	75,918	10	341,418	45	222,483	29	760,461
1972	136,245	17	95,683	12	275,192	34	303,500	37	810,620
1973	148,301	15	101,188	10	377,345	39	338,385	35	965,219
1974	138,084	14	87,417	9	443,711	44	338,863	34	1,008,075
1975	106,915	11	113,443	12	423,046	43	339,991	35	983,395
1976	152,197	13	148,796	13	494,450	42	385,618	33	1,181,061
1977	103,460	9	161,998	14	497,376	43	380,888	33	1,143,722
1978	136,879	11	148,054	12	630,030	50	347,958	28	1,262,921
1979	95,831	8	133,787	11	555,100	48	381,519	33	1,166,237
1980	105,698	9	151,490	12	596,725	49	371,952	30	1,225,865
1981	106,684	9	121,580	10	561,758	47	404,251	34	1,194,273
1982	99,482	9	119,530	10	590,617	51	348,491	30	1,158,120
1983	80,074	6	124,503	10	741,078	57	356,746	27	1,302,401
1984	95,825	7	119,864	8	819,594	57	405,607	28	1,440,890
1985	91,451	7	140,987	10	653,114	48	485,363	35	1,370,915
1986	83,055	5	168,812	11	816,317	51	536,677	33	1,604,861
1987	76,933	5	180,533	11	747,748	47	589,686	37	1,594,900
1988	86,478	5	142,671	8	931,240	54	559,376	33	1,719,765
1989	94,851	5	149,991	8	913,778	52	613,093	35	1,771,713
1990	89,480	5	195,207	10	957,293	50	654,964	35	1,896,944
1991	72,203	3	182,595	9	1,172,457	56	660,537	32	2,087,792
1992	93,718	5	183,032	9	1,094,683	54	653,393	32	2,024,826
1993	87,351	5	161,855	9	1,005,386	53	638,051	34	1,892,643
1994	112,337	6	196,727	10	1,092,640	54	639,089	31	2,040,793
1995	103,964	5	188,016	9	1,185,160	57	619,919	30	2,097,059
1996	105,892	5	194,057	10	1,129,913	56	576,863	29	2,006,725
1997	128,066	6	231,089	11	1,121,626	51	708,168	32	2,188,949
1998	133,835	5	204,737	8	1,451,119	58	732,248	29	2,521,939
1999	154,078	6	203,845	8	1,439,547	58	696,758	28	2,494,228
2000	122,549	5	256,279	10	1,442,289	57	706,783	28	2,527,900
2001	146,867	6	235,815	9	1,280,989	51	836,887	33	2,500,558
2002	171,235	6	252,321	9	1,465,329	54	843,550	31	2,732,435
2003	159,101	6	223,219	8	1,592,923	56	844,374	30	2,819,616
2004	158,118	6	257,754	10	1,602,974	60	661,910	25	2,680,755
2005	121,354	4	241,874	8	1,792,274	62	715,090	25	2,870,592
2006	131,709	5	250,411	9	1,888,911	65	616,944	21	2,887,975
2007	101,187	4	225,006	8	1,937,417	68	600,714	21	2,864,324

Table 11. Global catches of albacore, bigeye, skipjack and yellowfin

YEAR	ALBACORE		BIGEYE		SKIPJACK		YELLOWFIN		TOTAL
	TONNES	%	TONNES	%	TONNES	%	TONNES	%	
1960	130,228	20	98,663	15	155,782	23	282,246	42	666,919
1961	118,909	15	133,773	17	253,353	32	274,330	35	780,365
1962	157,010	19	137,824	16	286,687	34	260,037	31	841,558
1963	148,495	18	155,674	19	263,950	33	243,354	30	811,473
1964	159,097	19	123,444	15	287,560	34	273,869	32	843,970
1965	150,664	18	122,837	15	290,715	35	261,419	32	825,635
1966	160,603	17	126,557	13	370,190	39	281,566	30	938,916
1967	175,253	19	128,603	14	391,357	41	249,668	26	944,881
1968	177,090	17	142,231	14	354,609	35	350,148	34	1,024,078
1969	189,977	18	157,104	15	326,179	31	377,233	36	1,050,493
1970	181,733	17	142,972	13	397,512	36	372,329	34	1,094,546
1971	215,281	18	152,602	13	461,538	40	337,659	29	1,167,080
1972	230,933	19	161,235	13	389,020	32	440,137	36	1,221,325
1973	245,469	18	174,052	12	505,134	36	472,669	34	1,397,324
1974	237,372	16	178,116	12	615,076	41	486,638	32	1,517,202
1975	177,866	13	210,828	15	518,551	37	505,928	36	1,413,173
1976	244,295	15	221,857	14	614,596	38	553,838	34	1,634,586
1977	191,405	11	251,311	15	649,092	39	577,357	35	1,669,165
1978	228,247	13	250,011	14	780,289	43	539,923	30	1,798,470
1979	188,243	11	213,132	13	693,385	42	560,991	34	1,655,751
1980	181,263	10	249,440	14	763,210	44	549,867	32	1,743,780
1981	181,204	10	223,689	13	747,442	42	608,681	35	1,761,016
1982	197,495	11	235,892	13	803,156	44	572,555	32	1,809,098
1983	167,104	9	233,211	12	946,916	49	588,595	30	1,935,826
1984	172,605	8	234,143	11	1,060,188	51	627,755	30	2,094,691
1985	178,095	8	271,119	13	913,373	43	767,241	36	2,129,828
1986	204,520	8	291,087	12	1,089,045	45	829,845	34	2,414,497
1987	190,616	8	300,773	12	1,031,665	43	897,004	37	2,420,058
1988	183,050	7	282,022	11	1,272,477	48	910,159	34	2,647,708
1989	178,830	7	296,820	11	1,276,230	47	980,477	36	2,732,357
1990	191,594	6	352,922	12	1,326,308	45	1,089,172	37	2,959,996
1991	157,609	5	354,742	11	1,627,471	51	1,059,511	33	3,199,333
1992	185,170	6	353,014	11	1,538,966	48	1,132,051	35	3,209,201
1993	179,345	6	373,921	11	1,509,806	46	1,191,216	37	3,254,288
1994	208,552	6	437,597	13	1,610,157	47	1,136,562	33	3,392,868
1995	194,539	6	432,298	13	1,680,022	49	1,106,907	32	3,413,766
1996	196,380	6	441,475	13	1,594,358	48	1,072,280	32	3,304,493
1997	215,142	6	486,709	14	1,602,254	46	1,185,245	34	3,489,350
1998	230,698	6	455,728	12	1,937,781	51	1,190,188	31	3,814,395
1999	258,961	7	481,796	12	2,025,400	51	1,191,761	30	3,957,918
2000	231,683	6	487,770	13	2,003,409	51	1,172,041	30	3,894,903
2001	260,099	7	447,880	12	1,854,801	48	1,312,161	34	3,874,941
2002	265,757	6	468,623	11	2,068,278	50	1,319,097	32	4,121,755
2003	245,869	6	442,723	10	2,206,150	51	1,406,118	33	4,300,859
2004	233,514	6	476,567	11	2,211,039	53	1,281,939	31	4,203,058
2005	200,485	5	433,881	10	2,476,339	56	1,305,554	30	4,416,259
2006	221,737	5	423,727	10	2,625,062	60	1,129,550	26	4,400,076
2007	191,215	4	398,322	9	2,673,568	61	1,113,320	25	4,376,425

Table 12. Catches of albacore, bigeye, skipjack and yellowfin by ocean area. Estimates for the Atlantic Ocean and Indian Ocean for 2007 have been carried over from 2006.

YEAR	WCPO		EPO		ATLANTIC		INDIAN		TOTAL
	TONNES	%	TONNES	%	TONNES	%	TONNES	%	
1960	240,093	36	195,065	29	145,385	22	86,376	13	666,919
1961	304,476	39	252,360	32	135,230	17	88,299	11	780,365
1962	340,038	40	223,671	27	169,697	20	108,152	13	841,558
1963	269,620	33	273,193	34	188,395	23	80,265	10	811,473
1964	315,922	37	234,686	28	201,987	24	91,375	11	843,970
1965	288,857	35	220,566	27	222,199	27	94,013	11	825,635
1966	427,774	46	203,435	22	181,817	19	125,890	13	938,916
1967	364,577	39	270,159	29	184,929	20	125,216	13	944,881
1968	367,354	36	252,401	25	228,017	22	176,306	17	1,024,078
1969	385,302	37	278,759	27	236,694	23	149,738	14	1,050,493
1970	449,510	41	285,869	26	237,191	22	121,976	11	1,094,546
1971	468,147	40	292,314	25	290,958	25	115,661	10	1,167,080
1972	515,067	42	295,553	24	301,937	25	108,768	9	1,221,325
1973	632,590	45	332,629	24	304,880	22	127,225	9	1,397,324
1974	648,512	43	359,563	24	358,304	24	150,823	10	1,517,202
1975	577,405	41	405,990	29	302,119	21	127,659	9	1,413,173
1976	717,604	44	463,457	28	316,778	19	136,747	8	1,634,586
1977	740,998	44	402,724	24	372,569	22	152,874	9	1,669,165
1978	788,970	44	473,951	26	368,658	20	166,891	9	1,798,470
1979	759,124	46	407,113	25	338,014	20	151,500	9	1,655,751
1980	830,929	48	394,936	23	367,603	21	150,312	9	1,743,780
1981	801,135	45	393,138	22	414,704	24	152,039	9	1,761,016
1982	853,046	47	305,074	17	467,020	26	183,958	10	1,809,098
1983	1,060,323	55	242,078	13	427,425	22	206,000	11	1,935,826
1984	1,150,689	55	290,201	14	371,668	18	282,133	13	2,094,691
1985	1,005,735	47	365,180	17	429,527	20	329,386	15	2,129,828
1986	1,134,576	47	470,285	19	422,657	18	386,979	16	2,414,497
1987	1,127,946	47	466,954	19	397,709	16	427,449	18	2,420,058
1988	1,241,126	47	478,639	18	408,499	15	519,444	20	2,647,708
1989	1,290,861	47	480,852	18	419,134	15	541,510	20	2,732,357
1990	1,402,614	47	494,330	17	482,740	16	580,312	20	2,959,996
1991	1,635,330	51	452,462	14	524,923	16	586,618	18	3,199,333
1992	1,569,943	49	454,883	14	487,776	15	696,599	22	3,209,201
1993	1,453,443	45	439,200	13	536,589	16	825,056	25	3,254,288
1994	1,595,394	47	445,399	13	550,014	16	802,061	24	3,392,868
1995	1,604,373	47	492,686	14	507,394	15	809,313	24	3,413,766
1996	1,513,139	46	493,586	15	481,657	15	816,111	25	3,304,493
1997	1,625,792	47	563,157	16	445,842	13	854,559	24	3,489,350
1998	1,986,139	52	535,800	14	462,421	12	830,035	22	3,814,395
1999	1,816,324	46	677,904	17	493,792	12	969,898	25	3,957,918
2000	1,874,828	48	653,072	17	447,902	11	919,101	24	3,894,903
2001	1,775,289	46	725,269	19	475,884	12	898,499	23	3,874,941
2002	1,976,533	48	755,902	18	390,465	9	998,855	24	4,121,755
2003	1,973,633	46	845,983	20	417,216	10	1,064,027	25	4,300,859
2004	2,036,768	48	643,987	15	409,263	10	1,113,040	26	4,203,058
2005	2,186,096	50	684,496	15	394,022	9	1,151,645	26	4,416,259
2006	2,261,937	51	626,038	14	373,821	8	1,138,280	26	4,400,076
2007	2,385,925	55	478,399	11	(373,821)	9	(1,138,280)	26	4,376,425

Table 13. Discards (tonnes) by longliners in the WCPFC Statistical Area

Year	Albacore			Bigeye			Yellowfin			Total		
	Retained + Discarded	Discarded	%	Retained + Discarded	Discarded	%	Retained + Discarded	Discarded	%	Retained + Discarded	Discarded	%
1994	63,910	4,281	7.2%	86,550	9,597	4.5%	79,315	3,570	5.1%	222,850	10,523	5.3%
1995	64,899	4,511	7.5%	75,632	9,874	4.8%	85,845	4,115	5.4%	218,508	10,632	5.7%
1996	66,234	4,644	7.5%	63,584	9,461	4.9%	83,186	4,234	5.5%	204,969	10,304	5.8%
1997	80,002	7,359	10.1%	81,641	15,844	7.5%	78,227	5,696	8.2%	227,236	16,265	8.5%
1998	85,418	5,558	7.0%	91,546	10,274	4.5%	72,532	3,306	5.2%	241,284	10,926	5.4%
1999	73,393	4,563	6.6%	79,525	8,155	4.1%	63,359	2,707	4.9%	209,641	8,789	5.0%
2000	72,137	2,761	4.0%	73,944	3,162	1.4%	80,986	1,587	2.1%	224,042	4,485	2.2%
2001	83,086	2,941	3.7%	75,562	3,024	1.3%	78,029	1,627	2.2%	233,912	4,827	2.3%
2002	90,191	2,157	2.5%	89,189	1,340	0.5%	77,722	740	1.0%	255,648	2,783	1.2%
2003	83,775	3,500	4.4%	81,521	5,100	2.2%	78,077	1,892	2.7%	238,875	5,994	3.0%
2004	80,530	1,979	2.5%	99,388	2,013	0.8%	83,004	849	1.1%	261,380	3,299	1.4%
2005	82,592	4,439	5.7%	86,478	8,259	3.6%	75,705	2,666	4.0%	239,200	9,789	4.4%
2006	88,615	3,954	4.7%	89,996	5,836	2.4%	77,324	1,969	3.0%	251,200	7,024	3.2%
Average	78,060	4,050	5.2%	82,658	7,072	8.6%	77,947	2,689	3.4%	232,980	8,126	3.5%

Table 14. Discards (tonnes) by purse seiners in tropical waters of the WCPFC Statistical Area, excluding the domestic fisheries of Indonesia and the Philippines

Year	Skipjack			Yellowfin			Bigeye			Total		
	Retained + Discarded	Discarded	%	Retained + Discarded	Discarded	%	Retained + Discarded	Discarded	%	Retained + Discarded	Discarded	%
1995	583,932	31,936	5.5%	164,842	5,595	3.4%	6,395	358	5.6%	755,169	37,889	5.0%
1996	612,739	34,705	5.7%	88,503	3,508	4.0%	17,665	987	5.6%	718,907	39,199	5.5%
1997	479,607	27,502	5.7%	215,132	8,066	3.8%	48,286	2,604	5.4%	743,025	38,173	5.1%
1998	733,604	40,850	5.6%	230,080	7,029	3.1%	19,728	952	4.8%	983,413	48,830	5.0%
1999	661,807	39,646	6.0%	172,900	7,035	4.1%	25,998	1,445	5.6%	860,706	48,127	5.6%
2000	721,540	39,120	5.4%	159,815	5,335	3.3%	19,395	1,022	5.3%	900,750	45,477	5.1%
2001	686,545	34,985	5.1%	187,684	5,699	3.0%	20,229	979	4.8%	894,457	41,663	4.7%
2002	879,789	45,855	5.2%	137,775	4,422	3.2%	19,855	927	4.7%	1,037,419	51,205	4.9%
2003	793,037	39,084	4.9%	175,443	5,441	3.1%	18,410	880	4.8%	986,890	45,405	4.6%
2004	897,951	50,478	5.6%	120,613	4,242	3.5%	20,641	1,016	4.9%	1,039,205	55,736	5.4%
2005	953,418	47,810	5.0%	203,848	6,259	3.1%	27,227	1,271	4.7%	1,184,492	55,340	4.7%
2006	1,017,586	55,089	5.4%	154,901	4,680	3.0%	23,488	1,080	4.6%	1,195,975	60,849	5.1%
2007	1,082,043	56,415	5.2%	173,607	4,876	2.8%	16,826	776	4.6%	1,272,476	62,067	4.9%
Average	777,200	41,806	5.4%	168,088	5,553	3.3%	21,857	1,100	5.0%	967,145	48,458	5.0%

Table 15. Commercial catches of billfish in the WCPFC Statistical Area, by gear type and species

YEAR	LONGLINE					PURSE SEINE			OTHER COMMERCIAL GEARS					TOTAL
	BLUE MARLIN	BLACK MARLIN	STRIPED MARLIN	SWORD-FISH	SUB-TOTAL	BLUE MARLIN	BLACK MARLIN	SUB-TOTAL	BLUE MARLIN	BLACK MARLIN	STRIPED MARLIN	SWORD-FISH	SUB-TOTAL	
1962	14,197	2,091	15,207	10,354	41,849	-	-	-	1,023	65	0	38	1,126	42,975
1963	11,583	2,100	12,384	9,741	35,808	-	-	-	1,084	69	0	41	1,194	37,002
1964	10,240	1,697	17,023	5,942	34,902	-	-	-	1,149	73	0	43	1,265	36,167
1965	8,303	2,260	13,298	8,176	32,036	-	-	-	1,218	77	0	46	1,341	33,377
1966	8,763	2,408	9,648	9,821	30,640	-	-	-	1,291	82	0	49	1,422	32,062
1967	7,287	2,362	11,506	10,643	31,798	0	0	0	1,369	87	0	52	1,508	33,306
1968	6,673	2,951	11,783	9,504	30,911	0	1	1	1,451	92	0	55	1,598	32,510
1969	7,091	2,619	8,500	8,945	27,155	0	1	1	1,538	98	0	58	1,694	28,850
1970	9,977	3,544	7,594	7,578	28,692	6	14	20	1,795	125	0	67	1,987	30,699
1971	6,450	3,776	6,373	8,615	25,215	8	19	27	2,008	140	0	75	2,223	27,464
1972	7,957	3,696	5,194	8,111	24,957	9	20	29	2,087	146	0	78	2,311	27,297
1973	7,483	3,794	5,550	7,304	24,131	14	31	45	2,496	174	0	93	2,763	26,939
1974	7,253	3,115	4,789	7,990	23,146	7	17	24	2,901	201	0	109	3,211	26,381
1975	7,078	3,280	3,764	8,518	22,640	7	17	24	2,961	206	0	111	3,278	25,942
1976	6,709	2,242	3,497	9,955	22,403	7	16	23	2,497	175	0	93	2,765	25,191
1977	7,020	2,426	2,948	9,583	21,976	9	21	30	3,534	243	0	132	3,909	25,915
1978	8,862	2,787	3,744	9,871	25,264	8	20	28	2,141	156	0	80	2,377	27,669
1979	9,415	2,395	5,059	11,178	28,047	12	29	41	2,741	196	0	102	3,039	31,127
1980	10,245	1,553	4,822	8,740	25,361	13	29	43	2,504	177	0	94	2,775	28,178
1981	10,331	2,010	4,773	10,111	27,224	29	60	89	2,763	195	0	103	3,061	30,374
1982	10,400	2,023	4,536	9,215	26,173	43	90	133	2,558	175	0	95	2,828	29,134
1983	9,004	1,740	3,476	10,109	24,329	67	131	199	2,788	194	0	104	3,086	27,613
1984	12,197	1,317	4,837	9,975	28,324	85	162	247	2,884	211	0	106	3,201	31,772
1985	9,667	1,047	5,510	12,416	28,640	70	137	206	3,311	257	0	122	3,690	32,536
1986	10,349	1,120	6,175	11,474	29,118	66	127	193	3,395	268	0	125	3,788	33,099
1987	14,403	1,533	5,559	12,936	34,432	73	144	217	2,541	195	0	94	2,830	37,479
1988	14,553	2,294	7,612	12,809	37,268	71	142	214	3,039	222	0	112	3,373	40,855
1989	11,893	1,208	6,645	10,693	30,439	87	169	257	3,284	241	0	121	3,646	34,342
1990	10,354	1,166	4,900	11,550	27,970	95	184	279	4,598	342	1	168	5,109	33,358
1991	11,032	1,505	5,275	12,809	30,621	133	251	385	5,455	388	1	200	6,044	37,049
1992	13,365	1,669	5,375	18,349	38,758	141	241	382	2,700	218	1	96	3,015	42,156
1993	15,902	1,443	10,609	19,657	47,611	143	244	387	2,767	221	1	99	3,088	51,086
1994	15,690	1,868	6,365	16,884	40,806	142	240	381	4,245	289	1	156	4,691	45,878
1995	18,115	1,355	7,372	15,558	42,400	145	242	388	4,853	330	1	178	5,362	48,150
1996	14,598	967	5,990	14,860	36,416	159	264	423	5,378	339	56	183	5,956	42,795
1997	12,698	1,010	5,106	17,345	36,158	179	271	449	1,899	120	40	53	2,112	38,719
1998	16,634	1,594	7,177	18,636	44,041	182	267	449	1,997	138	27	62	2,224	46,713
1999	14,779	1,975	6,049	19,757	42,561	154	235	389	2,127	141	30	63	2,361	45,311
2000	14,107	1,324	4,393	20,310	40,135	184	272	457	2,188	150	15	68	2,421	43,013
2001	15,686	1,473	4,871	17,301	39,331	189	257	446	2,062	138	45	63	2,308	42,085
2002	15,449	1,712	4,434	18,640	40,235	206	278	484	2,187	152	30	68	2,437	43,156
2003	23,768	1,844	5,354	20,760	51,726	214	283	498	2,311	167	30	74	2,582	54,806
2004	22,393	2,407	5,296	21,964	52,059	228	294	522	1,583	125	35	46	1,789	54,371
2005	20,378	2,680	4,563	19,372	46,994	266	318	584	1,633	127	21	47	1,829	49,407
2006	19,825	2,542	4,663	21,652	48,682	234	294	528	1,769	142	23	52	1,985	51,195
2007	17,966	1,729	3,780	23,643	47,118	221	272	493	1,931	161	22	61	2,175	49,786

Table 16. Commercial catches of billfish in the WCPFC Statistical Area, by species

YEAR	BLUE MARLIN		BLACK MARLIN		STRIPED MARLIN		SWORDFISH		TOTAL
	TONNES	%	TONNES	%	TONNES	%	TONNES	%	
1962	15,220	35	2,156	5	15,207	35	10,392	24	42,975
1963	12,667	34	2,169	6	12,384	33	9,782	26	37,002
1964	11,389	31	1,770	5	17,023	47	5,985	17	36,167
1965	9,521	29	2,337	7	13,298	40	8,222	25	33,377
1966	10,054	31	2,490	8	9,648	30	9,870	31	32,062
1967	8,656	26	2,449	7	11,506	35	10,695	32	33,306
1968	8,125	25	3,044	9	11,783	36	9,559	29	32,510
1969	8,629	30	2,717	9	8,500	29	9,003	31	28,850
1970	11,778	38	3,683	12	7,594	25	7,645	25	30,699
1971	8,467	31	3,935	14	6,373	23	8,690	32	27,464
1972	10,053	37	3,862	14	5,194	19	8,189	30	27,297
1973	9,993	37	3,999	15	5,550	21	7,397	27	26,939
1974	10,162	39	3,332	13	4,789	18	8,099	31	26,381
1975	10,046	39	3,503	14	3,764	15	8,629	33	25,942
1976	9,213	37	2,433	10	3,497	14	10,048	40	25,191
1977	10,563	41	2,690	10	2,948	11	9,715	37	25,915
1978	11,011	40	2,963	11	3,744	14	9,951	36	27,669
1979	12,168	39	2,620	8	5,059	16	11,280	36	31,127
1980	12,762	45	1,759	6	4,822	17	8,834	31	28,178
1981	13,123	43	2,265	7	4,773	16	10,214	34	30,374
1982	13,001	45	2,288	8	4,536	16	9,310	32	29,134
1983	11,859	43	2,065	7	3,476	13	10,213	37	27,613
1984	15,166	48	1,689	5	4,837	15	10,081	32	31,772
1985	13,047	40	1,441	4	5,510	17	12,538	39	32,536
1986	13,810	42	1,516	5	6,175	19	11,599	35	33,099
1987	17,017	45	1,872	5	5,559	15	13,030	35	37,479
1988	17,663	43	2,658	7	7,612	19	12,921	32	40,855
1989	15,265	44	1,618	5	6,645	19	10,814	31	34,342
1990	15,048	45	1,692	5	4,901	15	11,718	35	33,358
1991	16,620	45	2,144	6	5,276	14	13,009	35	37,049
1992	16,206	38	2,129	5	5,376	13	18,445	44	42,156
1993	18,812	37	1,909	4	10,610	21	19,756	39	51,086
1994	20,076	44	2,396	5	6,366	14	17,040	37	45,878
1995	23,113	48	1,927	4	7,373	15	15,736	33	48,150
1996	20,135	47	1,570	4	6,046	14	15,043	35	42,795
1997	14,775	38	1,401	4	5,146	13	17,398	45	38,719
1998	18,812	40	1,999	4	7,204	15	18,698	40	46,713
1999	17,060	38	2,351	5	6,079	13	19,820	44	45,311
2000	16,480	38	1,747	4	4,408	10	20,378	47	43,013
2001	17,937	43	1,868	4	4,916	12	17,364	41	42,085
2002	17,842	41	2,142	5	4,464	10	18,708	43	43,156
2003	26,293	48	2,294	4	5,384	10	20,834	38	54,806
2004	24,204	45	2,826	5	5,331	10	22,010	40	54,371
2005	22,278	45	3,126	6	4,585	9	19,419	39	49,407
2006	21,828	43	2,977	6	4,685	9	21,704	42	51,195
2007	20,118	40	2,163	4	3,802	8	23,704	48	49,786

Table 17. Commercial catches of striped marlin and swordfish in the WCPFC Statistical Area north of the equator

YEAR	STRIPED MARLIN		SWORDFISH		TOTAL
	TONNES	%	TONNES	%	
1960
1961
1962	8,573	59	5,995	41	14,568
1963	6,819	56	5,358	44	12,177
1964	9,776	73	3,550	27	13,326
1965	7,994	61	5,007	39	13,001
1966	4,994	49	5,279	51	10,273
1967	7,602	51	7,262	49	14,864
1968	7,525	54	6,352	46	13,877
1969	5,678	48	6,044	52	11,722
1970	4,899	49	5,140	51	10,040
1971	8,169	68	3,835	32	12,004
1972	8,037	67	4,025	33	12,061
1973	8,342	67	4,032	33	12,374
1974	6,837	64	3,926	36	10,762
1975	8,108	70	3,507	30	11,615
1976	8,752	66	4,513	34	13,264
1977	9,238	71	3,731	29	12,969
1978	8,998	68	4,159	32	13,157
1979	9,516	70	4,065	30	13,581
1980	6,983	61	4,514	39	11,497
1981	8,048	63	4,748	37	12,796
1982	7,033	60	4,773	40	11,805
1983	8,764	66	4,569	34	13,332
1984	8,712	66	4,389	34	13,101
1985	10,713	73	4,029	27	14,743
1986	10,088	68	4,671	32	14,758
1987	11,537	66	5,872	34	17,409
1988	10,433	61	6,590	39	17,023
1989	8,712	60	5,785	40	14,497
1990	7,774	51	7,615	49	15,388
1991	6,944	41	10,144	59	17,088
1992	9,477	40	14,081	60	23,558
1993	14,879	53	13,084	47	27,963
1994	9,582	46	11,289	54	20,870
1995	9,789	49	10,289	51	20,078
1996	9,894	53	8,601	47	18,495
1997	9,319	47	10,690	53	20,009
1998	9,343	45	11,441	55	20,784
1999	8,199	43	11,070	57	19,269
2000	8,116	42	11,322	58	19,439
2001	9,347	49	9,585	51	18,933
2002	7,977	46	9,190	54	17,167
2003	7,419	41	10,718	59	18,137
2004	7,612	42	10,534	58	18,146
2005	7,722	45	9,467	55	17,189
2006	8,808	45	10,622	55	19,430
2007	7,834	41	11,117	59	18,950

Table 18. Commercial catches of striped marlin and swordfish in the WCPFC Statistical Area south of the equator

YEAR	STRIPED MARLIN		SWORDFISH		TOTAL
	TONNES	%	TONNES	%	
1960
1961
1962	6,634	60	4,398	40	11,032
1963	5,565	56	4,423	44	9,989
1964	7,247	75	2,434	25	9,681
1965	5,304	62	3,215	38	8,518
1966	4,654	50	4,591	50	9,245
1967	3,904	53	3,433	47	7,337
1968	4,258	57	3,207	43	7,465
1969	2,822	49	2,959	51	5,782
1970	2,694	52	2,504	48	5,199
1971	11,263	69	4,988	31	16,251
1972	7,455	65	3,934	35	11,390
1973	6,781	69	3,007	31	9,789
1974	6,939	71	2,846	29	9,785
1975	5,566	70	2,362	30	7,928
1976	5,512	59	3,855	41	9,367
1977	3,216	56	2,499	44	5,716
1978	3,057	56	2,421	44	5,478
1979	5,382	58	3,906	42	9,289
1980	6,224	63	3,620	37	9,843
1981	4,578	49	4,708	51	9,286
1982	5,664	55	4,661	45	10,325
1983	3,857	56	3,071	44	6,927
1984	3,775	62	2,336	38	6,110
1985	4,151	66	2,183	34	6,334
1986	5,529	67	2,693	33	8,221
1987	6,066	58	4,397	42	10,462
1988	6,507	63	3,855	37	10,362
1989	5,221	56	4,042	44	9,262
1990	2,877	41	4,088	59	6,965
1991	3,239	49	3,413	51	6,652
1992	3,416	50	3,423	50	6,839
1993	3,938	52	3,661	48	7,599
1994	3,755	48	4,018	52	7,774
1995	4,112	52	3,817	48	7,929
1996	2,633	37	4,475	63	7,108
1997	3,059	36	5,431	64	8,490
1998	3,463	35	6,549	65	10,012
1999	3,201	35	5,885	65	9,086
2000	2,532	31	5,555	69	8,087
2001	2,383	28	6,102	72	8,485
2002	2,738	27	7,564	73	10,302
2003	3,227	27	8,638	73	11,865
2004	3,002	17	14,405	83	17,407
2005	2,608	17	12,511	83	15,119
2006	2,871	18	13,300	82	16,171
2007	2,507	16	12,983	84	15,490

Table 19. Coverage (%) of longline effort (hooks) and purse-seine effort (days fished or searched) by observer data held by the SPC Oceanic Fisheries Programme

LONGLINE																	
Sector	1992	1993	1994	1995	1996	1997	1998	1999	2000	2001	2002	2003	2004	2005	2006	2007	1992-2007
Australia - Domestic	0.00	0.00	0.00	0.00	0.00	0.00	0.00	0.00	0.00	0.00	0.00	0.30	1.90	0.40	1.40	0.00	0.27
Australia - Japan	18.60	18.50	11.20	7.80	11.50	6.90	0.70	0.00	0.00	0.00	0.00	0.00	0.00	0.00	0.00	0.00	6.15
Distant-Water - Albacore	0.00	0.00	0.00	0.00	0.30	0.00	0.20	0.10	0.00	0.00	0.00	0.00	0.00	0.00	0.00	0.00	0.03
Distant-Water - Yellowfin & Bigeye	0.00	0.00	0.00	0.00	0.00	0.00	0.10	0.00	0.00	0.00	0.20	0.00	0.00	0.20	0.40	0.00	0.06
Hawaii	0.00	0.00	4.40	4.60	5.40	3.80	4.50	3.40	9.20	15.60	24.50	21.90	16.90	0.00	0.00	0.00	7.94
New Zealand - Domestic	0.50	0.00	0.60	2.60	4.80	5.30	3.60	0.50	0.40	3.70	1.50	7.70	14.90	2.90	2.60	0.00	3.98
New Zealand - Japan	6.20	31.40	51.10	88.80	0.00	81.30	46.70	84.10	76.30	65.80	100.00	47.20	0.00	50.60	100.00	0.00	37.47
Offshore - Albacore	0.10	0.00	0.10	0.70	1.20	0.60	0.80	0.40	0.10	0.10	0.60	0.80	0.90	1.40	1.30	0.40	0.78
Offshore - Tropical	0.10	0.30	0.40	0.30	0.30	1.00	0.70	0.50	0.70	0.10	1.40	1.40	0.90	1.00	1.20	0.30	0.72
Total	0.52	0.80	0.61	0.54	0.58	0.69	0.57	0.41	0.55	0.61	1.29	1.42	1.06	0.47	0.57	0.14	0.72
PURSE SEINE																	
School Association	1992	1993	1994	1995	1996	1997	1998	1999	2000	2001	2002	2003	2004	2005	2006	2007	1994-2007
Unassociated Schools	-	-	2.53	4.22	6.26	2.03	5.36	2.33	1.81	4.08	5.83	5.88	8.54	7.99	4.43	0.83	4.31
Associated Schools	-	-	0.42	2.84	5.03	3.09	6.25	3.48	5.05	5.96	10.08	10.25	10.38	10.73	7.05	1.04	6.18
Total	-	-	1.52	3.59	5.58	2.59	5.80	3.10	3.52	4.94	7.94	8.07	9.83	9.44	5.96	0.93	5.32

Table 20. Number of trips for longliners and number of strata of trip and school association for purse seiners covered by observer data held by the SPC Oceanic Fisheries Programme

LONGLINE																	
Sector	1992	1993	1994	1995	1996	1997	1998	1999	2000	2001	2002	2003	2004	2005	2006	2007	1992-2007
Australia - Domestic	0	0	0	0	0	0	0	0	0	0	0	6	34	9	33	0	82
Australia - Japan	59	86	62	41	34	31	2	0	0	0	0	0	0	0	0	0	315
Distant-Water - Albacore	0	0	0	0	1	0	2	1	0	0	0	0	0	0	0	0	4
Distant-Water - Yellowfin & Bigeye	0	0	0	1	0	0	1	0	1	0	2	1	0	3	4	0	13
Hawaii	0	0	47	48	53	37	50	38	111	229	280	264	213	0	0	0	1,370
New Zealand - Domestic	2	0	1	3	5	7	11	4	9	21	10	5	16	12	14	0	120
New Zealand - Japan	6	17	7	8	0	8	5	6	4	4	4	4	0	2	3	0	78
Offshore - Albacore	1	1	1	7	13	10	6	12	5	5	32	44	52	53	53	22	317
Offshore - Tropical	1	8	21	23	20	39	35	24	34	7	77	55	58	40	70	18	530
Total	69	112	139	131	126	132	112	85	164	266	405	379	373	119	177	40	2,829
PURSE SEINE																	
School Association	1992	1993	1994	1995	1996	1997	1998	1999	2000	2001	2002	2003	2004	2005	2006	2007	1994-2007
Unassociated Schools	-	-	11	30	57	62	85	54	55	69	128	144	224	205	141	30	1,295
Associated Schools	-	-	14	32	52	48	78	21	35	56	84	91	141	143	98	25	918
Total	-	-	25	62	109	110	163	75	90	125	212	235	365	348	239	55	2,213

Table 21. Estimates of catches (tonnes) of non-target species of finfish by longliners in the WCPFC Statistical Area (excluding the domestic fleets of Indonesia, the Philippines and Chinese Taipei)

Species or Species Group	1994	1995	1996	1997	1998	1999	2000	2001	2002	2003	2004	2005	2006	Average	%
Indo-Pacific sailfish	587	804	604	665	979	985	1,102	1,253	1,500	1,074	1,022	871	639	930	0.7%
Shortbill spearfish	1,932	1,909	1,509	1,393	1,745	1,812	1,646	1,585	1,621	1,893	1,587	1,620	1,363	1,663	1.2%
Blue shark	46,854	73,096	69,325	83,112	96,438	110,459	93,076	67,975	53,903	47,346	51,920	41,336	39,556	67,261	48.5%
Mako sharks	5,640	6,505	6,493	7,391	8,951	10,664	10,374	9,706	9,081	8,106	6,773	5,257	5,454	7,723	5.6%
Oceanic whitetip shark	10,364	13,999	13,651	11,776	15,338	13,860	12,268	9,054	9,035	6,551	6,124	4,627	3,586	10,018	7.2%
Silky shark	1,080	13,940	11,111	7,603	8,266	10,579	10,487	8,887	8,352	6,863	7,268	6,062	4,993	8,115	5.9%
Other sharks and rays	12,654	12,839	8,341	6,120	8,583	10,689	10,633	9,350	8,370	5,929	5,579	7,218	7,308	8,739	6.3%
Barracudas	794	942	713	620	630	766	867	911	1,060	845	816	722	559	788	0.6%
Common dolphinfish	3,171	2,158	1,617	1,827	3,946	7,208	12,013	7,244	4,468	5,319	4,091	5,922	8,257	5,172	3.7%
Escolars	5,307	4,622	4,449	4,174	5,535	6,535	6,257	5,950	6,548	8,049	9,379	7,168	6,934	6,224	4.5%
Lancetfishes	1,723	1,863	1,518	1,605	1,927	2,373	2,217	2,091	2,137	2,106	1,922	1,443	1,291	1,863	1.3%
Ocean sunfish	2,547	2,823	2,523	2,441	3,209	3,900	3,895	3,741	3,031	1,805	1,040	505	375	2,449	1.8%
Oilfish	1,285	1,118	1,014	1,140	1,770	2,038	2,102	1,710	1,251	824	720	513	355	1,218	0.9%
Opah	4,731	5,991	5,016	5,526	6,886	7,533	6,564	7,288	7,699	8,470	6,784	5,723	4,268	6,345	4.6%
Pomfrets	553	682	452	461	594	801	931	1,053	1,273	1,320	1,129	893	666	831	0.6%
Wahoo	2,430	2,866	2,434	2,174	3,068	3,402	3,632	3,777	4,567	4,812	5,029	4,766	4,175	3,626	2.6%
Other fish	5,114	5,866	6,166	6,535	8,021	8,474	9,447	6,685	5,959	3,923	2,572	2,010	1,865	5,587	4.0%
Total	106,766	152,022	136,937	144,563	175,888	202,080	187,511	148,261	129,856	115,235	113,756	96,656	91,644	138,552	100.0%

Table 22. Estimates of catches (tonnes) of non-target species of finfish by purse seiners in the WCPFC Statistical Area (excluding the domestic fleets of Indonesia and the Philippines)

Species or Species Group	1995	1996	1997	1998	1999	2000	2001	2002	2003	2004	2005	2006	2007	Average	%
Silky shark	145	236	427	455	786	685	753	941	944	1,366	1,087	1,060	889	752	6.5%
Whale shark	166	157	252	285	248	214	272	411	510	636	694	694	781	409	3.6%
Other sharks and rays	1,361	1,361	1,901	1,115	1,114	734	589	561	404	467	383	274	192	804	7.0%
Common dolphinfish	293	317	602	587	635	417	428	595	608	834	690	692	656	566	4.9%
Mackerel scad	573	740	688	717	1,126	854	942	1,431	1,606	2,519	1,949	2,111	2,037	1,330	11.6%
Frigate and bullet tuna	538	397	356	401	248	227	363	420	725	602	614	410	259	428	3.7%
Rainbow runner	1,418	2,895	4,621	4,016	4,968	3,427	3,380	4,195	4,922	10,746	9,931	9,345	4,129	5,230	45.5%
Triggerfish	464	1,408	1,558	819	691	340	360	737	1,262	2,964	1,915	1,814	1,962	1,253	10.9%
Other fish	431	628	675	480	575	449	471	697	937	1,307	875	833	1,197	735	6.4%
Total	5,389	8,138	11,080	8,876	10,391	7,347	7,559	9,987	11,918	21,441	18,138	17,232	12,102	11,507	100.0%