

Bigeye tuna MP progress and key decision points

WCPFC22-2025-25

SPC/OFP

Western and Central Pacific Fisheries Commission:
Twenty-Second Regular Session

Manila, Philippines, 1-5 December 2025

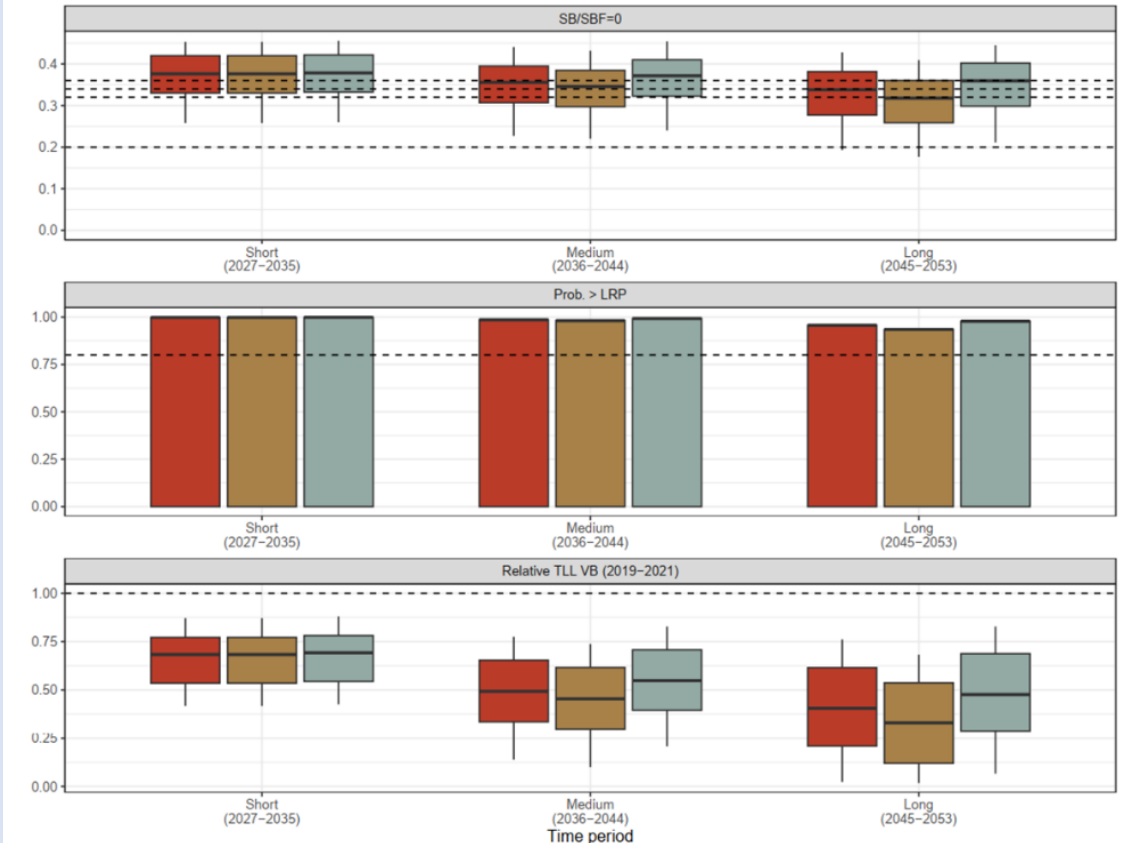
Overview

- Adoption of a BET management procedure (MP) is scheduled for 2025, or failing that, 2026
- WCPFC21 – sequenced approach to developing TRPs for BET and YFT
 - 2012-2015 SB/SBF=0
 - $0.94 \times 2012-15 \text{ SB/SBF-0}$
 - $1.06 \times 2012-15 \text{ SB/SBF-0}$
 - May be specified as threshold TRPs – associate probability of being ‘at or above’
- SC21 reviewed initial candidate MP designs and evaluations
 - Proposed OM reference set
 - Candidate MP designs & proposed Estimation Method
 - Initial MSE evaluations of candidate MPs.

Initial BET MP evaluations

Assumptions for the initial evaluations:

- BET MP applies to the TLL (20°N to 10°S)
 - SLL managed through SPA MP
 - PS, PL, dom IDPH managed through SKJ MP
- 3 year management period
- 2 year data lag
- 3 MPs with TRPs requested by WCPFC21
- MP outputs a measure of catch
- Similar HCR design (Hillary step) $\pm 10\%$ constraint

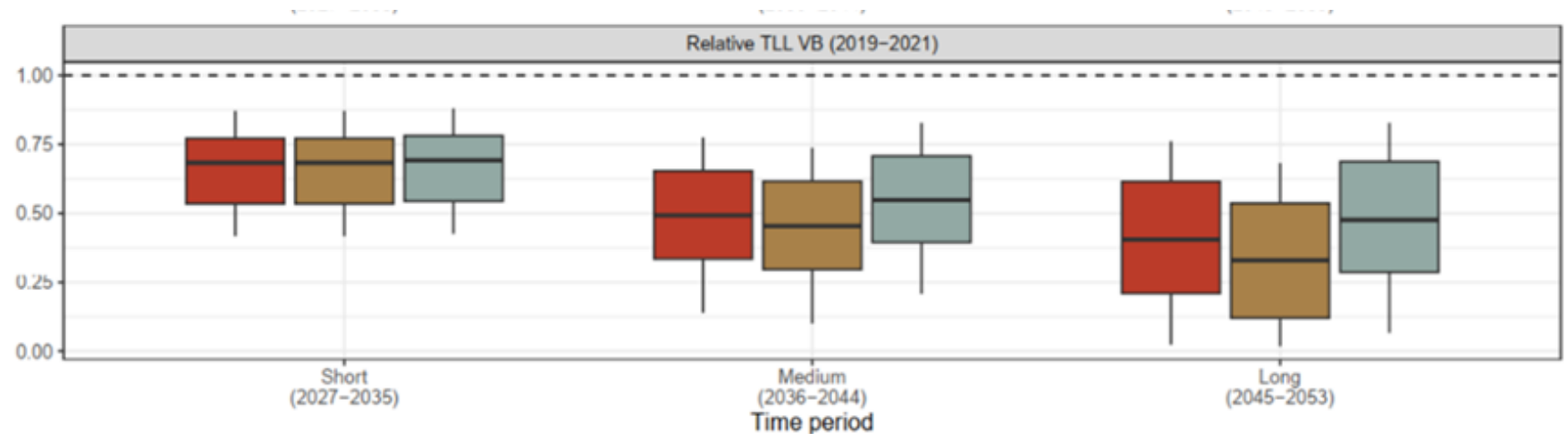


Guidance sought on alternative options for BET MP design

Information required to progress BET MP development

- Management Objectives

- SKJ MP manages PS, PL, dom IDPH fisheries at respective baselines
- SPA MP manages SLL at baseline 2020-22 levels
- Scope for increases in catch for the TLL (10% to 50% depending on TRP),
- but with associated CPUE decline.

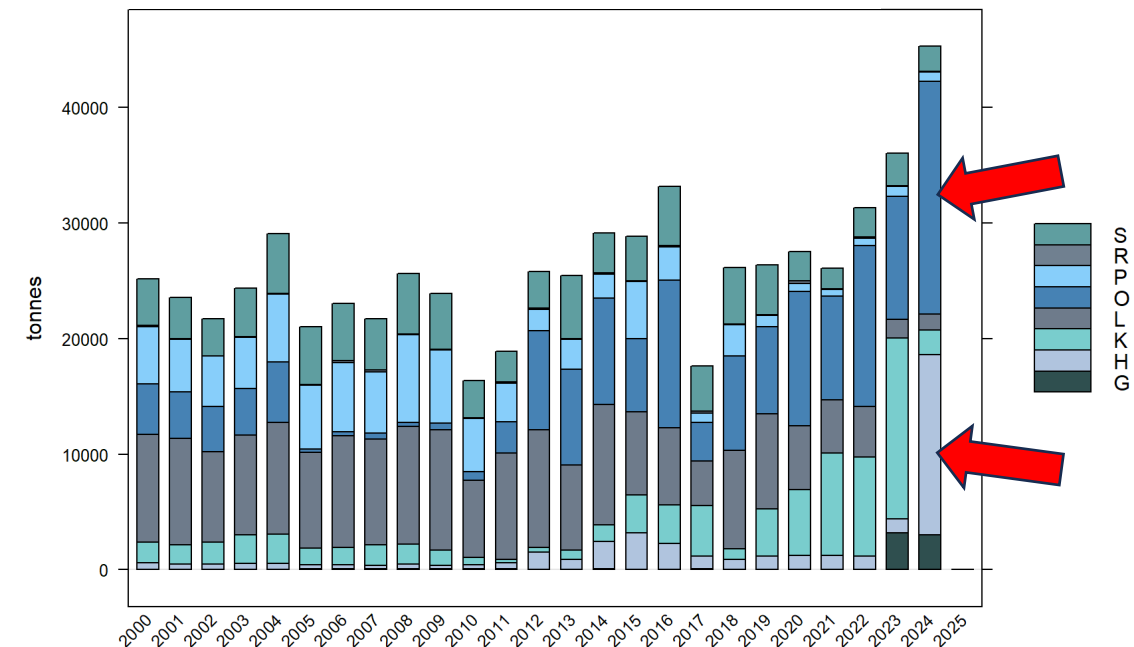


Information required to progress BET MP development

- Treatment of the FAD closure period
 - Initial assumption that FAD closure period continues under current arrangements
 - Options:
 1. Baseline assumption of no FAD closure
 - Alternative FAD closure scenarios evaluated through sensitivity analyses
 2. FAD closure determined as part of the BET MP
- Compatibility with existing arrangements
 - Initial assumption that the MP output would be a measure of catch
 - Option to effort
 - Possible to convert between catch and effort such that MP output and management metric may differ

Information required to progress BET MP development

- Sensitivity analyses for BET catches in areas outside of MP control
 - Around 17% BET catch taken in fisheries of ID PH VN – large component in archipelagic waters
 - Variable fishery dynamics and catch reporting challenges
 - Recent trends indicate progressive reduction in PL and LL fishing
 - Switch to smaller scale operations (handline, troll, ...)
 - Overall increasing catches
- Proposed approach
 - Develop sensitivity analyses across a range of scenarios for recent averages to historical highs
 - Taking account of recent management measures in ID



Further considerations

- Management objectives
 - TRP options (threshold)
- MP design
 - Area of application (TLL fishery 20°N to 10°S)
 - 3-year management period – 2-year data lag
 - Catch/effort controls
 - FAD closure assumptions
- Sensitivity testing
 - Catch and effort in fisheries not under control of the MP
- Mechanisms for strategic guidance from the Commission
 - BET MP scheduled for adoption at WCPFC23
 - SC22 in August
 - Potential for an SMD

- SC21 noted the following outcomes regarding the development of the BET MP.
 - Operating Models (sources of uncertainty)
 - Supported [the proposed OM grid] - recommended additional sources of uncertainty be investigated.
 - FAD closure period assumptions considered as sensitivity analyses – rather than as part of OM grid.
 - MP design
 - Endorsed the approach for estimating stock status
 - BET MP controls the TLL (27% BET catch) – stressed the importance of considering dynamics of other fisheries
 - Performance indicators
 - Retain the 6 PIs and also keep consistent for YFT – further consideration of options for PIs.

Mixed Fisheries controlled by single species MPs

	Tropical Longline	Southern Longline	Northern Longline	Pole & Line	Purse Seine	Troll	Other
Skipjack	-	-	-	0.09	0.83	-	0.08
South Pacific albacore	0.12	0.81	-	-	-	0.07	-
Bigeye	0.27	0.05	0.06	0.01	0.45	-	0.15
Yellowfin	0.08	0.02	0.01	0.03	0.55	-	0.31

Mean catch proportion (2020-22, by weight) by gear type for the 4 main tuna stocks in the WCPFC-CA (South Pacific albacore for WCPFC-CA south of the equator only)

