



**SCIENTIFIC COMMITTEE
SECOND REGULAR SESSION**

7-18 August 2006
Manila, Philippines

CHAIR'S BRIEFS ON THE PROVISIONAL ANNOTATED AGENDA

WCPFC-SC2-2006/07 CHAIR'S BRIEFS

Paper prepared by the Secretariat

This brief is intended as a supplement to the provisional annotated agenda. It is intended to support the assimilation and discussion of the best scientific information available during the second regular session of the Scientific Committee. The Chair and participants may consider this brief as a guide for assisting with the identification of key issues that need to be considered during the meeting.

AGENDA ITEM 1 OPENING OF THE MEETING

The meeting will open at 08:30 on Monday, 7 August 2006.

1.1 Welcome address

The Acting Chair (Dr Shelton Harley) will call the meeting to order.

The Acting Chair will welcome delegations of the WCPFC Members, participating territories and observers to the second regular session of the Scientific Committee. Participating Members, territories and observers will be introduced.

CHAIR'S BRIEF

Purpose

To introduce participants

Background

Participating Members, territories and observers may, at the discretion of the Chair, be given an opportunity to make a brief opening statement.

The Government of Philippines has advised that members of the Manila diplomatic community have not been invited to the Opening.

As the Secretary of the Department of Agriculture, Domingo F. Panganiban is not available to officially open the meeting until 10:30, it is proposed that procedural issues be dealt with in the first morning session. While this can be further discussed during the Heads of Delegation meeting scheduled for the afternoon of Sunday 6th August they could include:

- Introduction of participants
- Election of Chair;
- Adoption of agenda;
- Meeting arrangements;
- Reporting arrangements; and
- Inter-sessional activities of the SC.

It is proposed that the SC breaks for morning refreshments at 1000 and re-convenes sharply at 1030 to receive the Director's welcome address and the Secretary's opening address.

The Chair will introduce Mr Malcolm Sarmiento, the Director of the Bureau of Agriculture and Fisheries (BFAR) who will extend a welcome to participants. Mr Sarmiento will then introduce the Executive Director of the WCPFC who will make some brief opening remarks. Mr Sarmiento will then introduce the Secretary of the Department of Agriculture, Domingo F. Panganiban to present an Opening Address.

At the conclusion of the opening address a senior member of the Scientific Committee will be invited to respond on behalf of all participants thanking the official for the address.

The meeting will pause for a brief period while the Secretary and his delegation are escorted from the room. Participants will be asked to remain in the room so the meeting can continue immediately once the Secretary's delegation has departed.

1.2 Election of Chairman

The Commission appointed Dr Shelton Harley (New Zealand) to serve as Interim Chair of the Scientific Committee following the resignation of the inaugural Chair in December 2005. In accordance with Rule 10 of the Commission's Rules of Procedure, a new Chairman of the Scientific Committee will be elected for the inaugural Chair's unexpired term.

The Scientific Committee will consider an automatic extension of new Chair's office for another two years, from the start of the 2nd Scientific Committee meeting to the conclusion of the 4th Scientific Committee meeting in 2008.

The Scientific Committee will also seek a new Vice-Chair to serve from the end of the 3rd Commission Meeting in December 2006.

CHAIR'S BRIEF

Purpose

To elect a new Chairperson of the Scientific Committee

Background

The position of Chair of the Scientific Committee fell vacant early in 2006. The Commission, at its December 2005 Session appointed the Vice Chair, Dr Shelton Harley (New Zealand) the Interim Chairman pending the election of a new Chair at the Second Regular Session of the SC. Dr Harley has worked with the Secretariat throughout 2006 to prepare for the Second Regular Session of the Scientific Committee.

The current Vice-Chair took the office at the end of the 2nd Commission meeting December 2005 and has indicated that he will only be able to serve until the end of the 3rd Commission meeting in December 2006.

Discussion

The Scientific Committee may consider the term of the new Chair's office. It may consider an appointment for two years, from the start of the 2nd Scientific Committee meeting to the conclusion of the 4th Scientific Committee meeting in 2008. A new Chair would then be elected at the end of the 4th Scientific Committee meeting in 2008.

Recommendation

A new Chair of the Scientific Committee will be elected.

1.3 Adoption of agenda

The provisional agenda for the Second Regular Session of the Scientific Committee was prepared and distributed on 9 May 2006 in accordance with Rule 1 of the Commission's Rules of Procedure. In accordance with Rule 3, this Provisional Agenda (WCPFC/SC2/2006/04 Rev. 1) incorporates suggestions for supplementary items received from Members 30 days in advance of the Second Regular Session.

CHAIR'S BRIEF

Purpose

To adopt the agenda for the second regular session of the Scientific Committee

Background

The heads of delegation meeting on the Sunday afternoon prior to SC2 may discuss refinements of the provisional agenda. The Scientific Committee is required to adopt an agenda, if necessary, as refined by the Committee.

1.4 Meeting arrangements

The Chairman will outline the procedural matters including the time schedule for the meeting and any in-house arrangements.

After the conclusion of Agenda Item 2, the plenary will be adjourned to allow six Specialist Working Groups to carry out their work.

CHAIR'S BRIEF

Purpose

To brief participants on meeting schedules and house-keeping matters

Issues

1. Time schedule of the meeting sessions
 - The Committee is expected to adopt a meeting schedule. This also may be discussed during the Heads of Delegation meeting on the Sunday evening.
2. Plenary vs. SWG meetings
 - The plenary of the Scientific Committee will adjourn after the conclusion of Agenda Item 2 until the conveners of the SWGs report the summary of their work to the plenary under Agenda Item 3.
 - There may be some discussion about the respective roles of the Scientific Committee itself and the SWG. . The SWG is as a subsidiary body of the Scientific Committee, less formal, than the plenary of the Scientific Committee. In simplest terms, although participation in the SWGs is open to all participants, their work is coordinated by experts in the particular focal areas of each of the SWGs. The discussion can be highly technical without losing focus on the key needs of the Commission in terms of advice and recommendations. The SWGs will report on their work to the Scientific Committee itself and it will be up to the Scientific Committee to agree what outcomes of the SWG work is incorporated in the Summary Report to the Commission.
3. Two informal meetings at the margin of the Scientific Committee meeting
 - The 3rd Steering Committee of the IPDCP [first session tentatively scheduled for lunchtime Tuesday 8th August. The Steering Committee may require more than one session to complete its work.]
 - SC-TCC Informal Consultative Meeting. To take advantage of the presence of compliance personnel this informal session may in fact convene during the AHTG meeting in the week 31 July-4 August.
4. Daily meeting schedule
 - 0830-1800, with a lunch break 1230-1400 and two tea-breaks 1030-1100 and 1530-1600
5. Functions (TBC)
 - A welcome dinner will be hosted by the Secretary on the evening of 7th.
 - The DA/BFAR research vessel will be used for a field trip to Corregidor Island on 13th August (Sunday). Participants are asked to add their names to a List available at the Registration Desk indicating their participation in this excursion.

- The Secretariat will host a farewell cocktail on the evening of Friday 18th August.

Discussion

The Chair may inquire if participants have any other questions concerning meeting arrangements.

1.5 Reporting arrangements

Scientific Committee Report

The Scientific Committee will adopt a Summary Report and a ~10-page Executive Summary that will address the requests from the Commission (GN WP-7). Relevant text under Agenda Items highlighted with an asterisk (*) will be incorporated in the Executive Summary as recommendations to the Commission.

The Scientific Committee will appoint lead and supporting rapporteurs, who will be assigned to specific agenda items.

Specialist Working Group Reports

The Specialist Working Groups will each produce a full report and a summary that will be incorporated into the Summary Report of the Scientific Committee. The full report will be attached to the Summary Report, while the summary will be incorporated into the text of the Scientific Committee's Summary Report. The SWGs will appoint lead and supporting rapporteurs, who will be assigned to specific agenda items.

The suggested 1-page summary will be incorporated directly into the main Scientific Committee report and include: details of the number of papers reviewed and their general topics and details of Scientific Committee agenda items on which the SWG has provided advice to the Scientific Committee.

Each full SWG report will include a summary of papers considered by the SWG (to be provided by the authors) including subsequent discussion and advice and recommendations for the Scientific Committee. Each SWG report will append the agenda, a list of working papers, and a list of relevant acronyms and abbreviations used. All presenters will provide a concise 1-2 paragraph summary of their paper to the convenor of their SWG before their presentation. This report will be attached to the Summary Report.

Reporting Procedure

The SWGs will review draft SWG reports throughout the first week of the Scientific Committee and clear them under the supervision of the relevant convenors. Convenors will present a brief summary of their SWG reports at the plenary. The Scientific Committee will accept each report as a record of the work of the Scientific Committee through its SWGs. Editorial corrections and/or clarification may occur, if necessary, after the Scientific Committee meeting.

CHAIR'S BRIEF

Purpose

To identify information flow between the SWG and the plenary of the Scientific Committee

Background

1. SC1 Report did not produce an Executive Summary highlighting the Scientific Committee's response to the requests from the Commission. The preparation of an agreed Executive Summary prior to the close of SC2 will hopefully address this shortfall.
2. The SWG reports were "adopted" following discussion during the plenary of SC1. At SC2 it is proposed that the plenary "accept" the SWG reports as records of their respective meetings. These reports may include some issues that were not fully resolved during the SWG discussions.

Issues

The following clarifications were proposed for the efficient meeting procedure between the SWG and the Scientific Committee.

1. SWG Reports

The SWGs will appoint lead and supporting rapporteurs, who will be assigned to prepare summary reports for specific SWG agenda items.

The Specialist Working Groups will produce a full report of its meeting. They are also requested to prepare a concise summary of the issues considered and the outcomes of discussion. This summary will be incorporated into the Draft Summary Report of the Scientific Committee. The suggested 1 or 2-page summary may include relevant background information and the primary objectives of that meeting of the SWG, issues considered, brief notes on key issues raised during presentations and advice and recommendations to the Scientific Committee.

The full report of the each SWG will include an overview of papers considered by the SWG (to be provided by the authors of each paper) including a fair summary of discussions during the SWG session and advice and recommendations for the Scientific Committee. Each SWG report will append the agenda, a list of working papers, and a list of relevant acronyms and abbreviations used.

All presenters are required to provide a concise 1-2 paragraph summary of their paper to the convenor of their SWG before their presentation.

2. Reporting Procedure

The SWGs will review draft SWG reports throughout the first week of the Scientific Committee and clear them under the supervision of the relevant convenors. Convenors will present a brief summary of their SWG reports at the plenary, if they wish. The Scientific Committee will accept each report as a record of the work of the Scientific Committee through its SWGs. The Plenary will endeavor to review the SWG's deliberations, make best efforts to resolve any outstanding matters and aim to formally adopt the SWG reports when the Summary Report of the Scientific Committee is adopted on the last day of the meeting. If necessary, the Scientific Committee may decide to identify those issues on which it was not possible to reach consensus agreement in its

Summary Report. Minor editorial corrections and/or clarification may occur, if necessary, after the Scientific Committee meeting.

Depending on the views expressed during the Heads of Delegation meeting scheduled for the afternoon of Sunday 6th August, several drafting groups may be identified to assist with the development of text (including draft advice and recommendations) for subsequent consideration by the Scientific Committee: Possible drafting groups (which would ideally involve 3-6 participants) include:

- Draft sea bird outcomes
- Draft sea turtle research program
- Draft data collection requirements

The Chairman could call for nominations for participants for each drafting group and appoint a convener who would be responsible for preparing the draft.

3. Summary Report of the Scientific Committee

The Scientific Committee will adopt a Summary Report (as defined in the Commission's Rules of Procedure as a meeting report) and a 10-page "Executive Summary" (for convenient reference by Commissioners and others) that will address the requests from the Commission. Relevant text under Agenda Items highlighted with an asterisk (*) will be incorporated in the Executive Summary as recommendations to the Commission.

The Secretariat, with volunteer drafting assistance from participants, will take responsibility for drafting the Summary Report for the consideration of the Scientific Committee. During the second week of the SC sections of the draft Report may be circulated inviting constructive input and suggestions for its improvement and accuracy.

Discussion and Recommendation

The Scientific Committee will finalize reporting arrangements for the SWG and SC2 including:

- Formally adopt the proposal to prepare an Executive Summary and the procedure for doing so; and
- The procedure of accepting the SWG reports.

It is proposed that the first draft for each report be distributed as soon as possible after the conclusion of each WG session but at the latest by midday Saturday 12th August. Comments should be provided to the respective conveners by Sunday afternoon for consolidation and any necessary re-drafting.

The first five hour plenary session on Monday 14th August is reserved for the verbal reports of the conveners of each SWG meetings and clearance and acceptance of the SWG reports.

1.6 Intersessional activities of the Scientific Committee

The Chair will report on intersessional activities of the Scientific Committee and the Secretariat.

CHAIR'S BRIEF

Purpose

To briefly inform the Scientific Committee of any intersessional activities of the Committee and the Secretariat

Background

In accordance with Rule 13 of the Rules of Procedure of the Commission (“The Executive Director shall make an annual report, and such supplementary reports as are necessary, to the Commission at its regular session on the work of the Commission.”), the Scientific Committee may be informed of any activities of the Scientific Committee and the Secretariat. This annual report is supposed to be communicated to CCMs and observers at least forty-five days before the opening of the regular session of the Commission (mid-June in the case of the Scientific Committee).

However, if the Scientific Committee wants to apply this rule, *mutatis mutandis*, the deadline of communication may be reconsidered. As all scientific activities proposed are determined by the Commission in December and as member’s science information should be available before June for the Secretariat to compile those, the “annual report” of forty-five day before the regular session may not include sufficient information. This year, as a trial, the Secretariat prepared an informal Chair’s report on the activities of the Scientific Committee and the Secretariat on science issues.

Discussion

The Scientific Committee will provide comments on the report and may discuss how to apply Rule 13 of the Commission’s Rules of Procedure to the Scientific Committee. Any discussion on this matter should also be captured under agenda item 10.1 “Rules of Procedure”.

AGENDA ITEM 2 REVIEW OF FISHERIES

2.1 Overview of WCPO fisheries

A presentation will be made describing the fisheries for highly migratory species in the WCPO region. The Scientific Committee will be invited to ask questions and provide comments.

CHAIR’S BRIEF

Purpose

To inform the SC of the latest available information for WCPO highly migratory species fisheries

Background

Article 12 of the Convention requests the Scientific Committee that “The representatives of the Oceanic Fisheries Programme of the Pacific Community and the Inter-American Tropical Tuna Commission, or their successor organizations, shall be invited to participate in the work of the

Committee. The Committee may also invite other organizations or individuals with scientific expertise in matters related to the work of the Commission to participate in its meetings.”

The SPC/OFP and FFA have been providing an overview of the WCPO fisheries since the Standing Committee on Tuna and Billfish. There used to be two different presentations: biological overview and economic overview. Most agenda of the Scientific Committee has been related with biological aspect and no further discussion has been dealt with economic aspects of the WCPO fisheries. Document GN WP-1 is the reference of this presentation.

2.2 Overview of EPO fisheries

A presentation will be made describing the fisheries for highly migratory species in the EPO region. The Scientific Committee will be invited to ask questions and provide comments.

CHAIR’S BRIEF

Purpose

To inform the SC of the latest available information for EPO highly migratory species fisheries

Background

As specified in the Convention, the Inter-American and Tropical Tuna Commission will be invited and provide an overview of the EPO tuna fisheries, latest activities, areas for collaboration and other information of our common interests and concerns.

Discussion

The Scientific Committee will be invited to ask questions and comment on the EPO fisheries. In -depth discussion on cooperation between WCPFC and IATTC will occur under agenda item 7.2.

2.3 Fishery reports from Members, Participating Territories and Cooperating Non-Members (CCMs)

CCMs will be given the opportunity to make a short presentation, no more than 3 minutes, highlighting recent changes and developments in their fisheries as described in Part 1 of their Annual Report to the Commission. A short number of questions will be allowed.

Summaries of a maximum of ½ page (provided by authors) and key issues raised in subsequent discussion will be incorporated into the Scientific Committee report.

It will be assumed that all reports have been read prior to the meeting and the use of PowerPoint or other visual presentations is discouraged due to time constraints.

CHAIR’S BRIEF

Purpose

To inform the SC of the latest available information for national highly migratory species fisheries

Background

This item that has been continued from the SCTB has been useful from two standpoints: sharing an understanding of highly migratory species fisheries undertaken by each Member of the Commission and promoting active participation of all members in the work of the Commission in relation to the conservation and management of highly migratory species stocks in the WCPO. The session will involve oral presentations by member's representatives and subsequent questions and comments.

Issues

Three key issues are: i) the availability of national fishery reports in advance of the Session to allow collation, copying and distribution (including website posting), ii) the time allocation for oral presentations and iii) the quality of fishery information presented.

Discussion

The Scientific Committee may consider means to improve the preparation, distribution and presentation of national fishery reports for trial at the 3rd Scientific Committee meeting. This could be discussed under Agenda Item 10.3 Future Operation of the Scientific Committee.

2.4 Reports from international fisheries organizations and other organizations

Regional fisheries bodies or other organizations in attendance will be able to make a brief presentation on their key issues in relation with the science issues of the Commission. Such presentations need to be arranged with the Chair well in advance of the start of this agenda item.

CHAIR'S BRIEF

Purpose

To learn of the latest activities of international fisheries organizations and other organizations with an interest in WCPO highly migratory species fisheries who are participating in the SC as observers.

Background

This section also originated from the SCTB. The IATTC, FAO, SPC and other organizations were invited to report on their activities of interest. Details of cooperation between the Commission and other organizations will be considered under Agenda Item 7. The Scientific Committee will be invited to ask questions and comment on presentations.

Discussion

The Scientific Committee may be advised that observer status of NGOs remains in effect for future sessions unless the Commission decides otherwise.

AGENDA ITEM 3 SPECIALIST WORKING GROUPS (SWGs)

(Biology SWG, Ecosystem and Bycatch SWG, Fishing Technology SWG, Methods SWG, Statistics SWG, and Stock Assessment SWG)

SWG conveners will open their meetings in accordance with meeting schedules (WCPFC-SC2-2006/05). Each SWG will respond to the requests from the Commission as the highest priority.

3.1 Reports of SWGs

The SWGs will make every effort to finalize their reports by consensus. Respective reports should include text that can be considered by the Scientific Committee for incorporation into the Summary Report of the Scientific Committee, particularly as discussion relates to Scientific Committee Agenda Items marked with an asterisk (*).

The conveners of the SWGs report to the Scientific Committee will include: a description of the agenda items considered, a summary of the papers presented, the outcomes of subsequent discussion, the results of deliberations on the requests from the Commission and advice and recommendations to the Scientific Committee.

CHAIR'S BRIEF

Purpose

To accept all SWG reports by the plenary of the Scientific Committee

Background

Refer to the brief above under agenda 1.5

Issues

Any issues in the draft SWG reports that are not complete may be revisited under the relevant agenda items of the Scientific Committee. However, the SWG reports will not be redrafted once accepted during the SC plenary because the SWG reports are considered to be “records” of the meeting. Efforts should be made not to re-open discussion.

Discussion

The Scientific Committee will finalize and accept a report of each SWG to the plenary. No additional oral summary report to the plenary by each convener is necessary. Any independent recommendations, in addition to those to the requests from the Commission, may be addressed by each SWG for the Committee's consideration.

3.2 Acceptance of the reports of the SWGs, including advice and recommendations

The Scientific Committee will accept the SWG reports as part of the Summary Report of the Scientific Committee meeting. Once accepted, any recommendations from each SWG will form the basis of Scientific Committee deliberations under the relevant agenda items.

3.3 Terms of Reference for SWGs

The Scientific Committee will review and revise, as considered necessary, Terms of Reference of the six SWGs.

CHAIR'S BRIEF

Purpose

To update TORs of each SWG, as necessary, for the 2007 SWG meeting

Background

The current SC structure which includes six SWGs is considered an intermediate or transitional arrangement. An Independent Review of the Commission's science structure and functions will be considered in detail under agenda 10.3.

Under this agenda, the Scientific Committee is invited to review the current SWG TORs (GN IP-1) and for those revised TOR to apply to next year's meeting. It is possible that participants may consider some of the current SWGs are no longer required while others may think additional SWGs are necessary. While some limited discussion on this may be useful during SC2 it may be more effective to request the Independent Review to take up this matter and consider it in more detail during SC3.

Discussion

The Scientific Committee will review the TOR of all SWGs and refine them as considered necessary for next year's meeting.

AGENDA ITEM 4 STATUS OF THE STOCKS AND MANAGEMENT INFORMATION

The Scientific Committee will review information on the status of the stocks. Stock assessments and other analyses will be reviewed by the Stock Assessment Working Group and that group will provide some draft text for the Scientific Committee to consider.

CHAIR'S BRIEF

Purpose

To review analyses of the status of target tuna stocks in the WCPO, respond to requests for advice from the Commission and report to the Commission its findings and conclusions.

Background

According to Article 12 of the Convention, the functions of the Scientific Committee related with this session will be to:

- review the assessments, analyses, other work and recommendations prepared for the Commission by the scientific experts prior to consideration of such recommendations by the Commission and provide information, advice and comments thereon, as necessary;

- review the results of research and analyses of target stocks or non-target or associated or dependent species in the Convention Area;
- report to the Commission its findings or conclusions on the status of target stocks or non-target or associated or dependent species in the Convention Area;
- make reports and recommendations to the Commission as directed, or on its own initiative, on matters concerning the conservation and management of and research on target stocks or non-target or associated or dependent species in the Convention Area; and
- perform such other functions and tasks as may be requested by or assigned to it by the Commission.

Accordingly, the Scientific Committee will review the report of the SA-SWG, consider the status of target stocks and the management implications of the assessments including the outcomes of assessments undertaken by the science services provider, SPC OFP.

The Scientific Committee has previously acknowledged that assessments of the status of the stocks of the WCP-CA are subject to uncertainty associated with the inputs, model specification and structure. Quantification of the uncertainty associated with stock assessments is complex and is a high priority for future research. Nonetheless, the Scientific Committee agreed that it will provide advice on stock status and management implications on the basis of the best scientific information currently available (paragraph 4.3, SC1 Report).

Discussions

The sub-items below will be fully discussed at the SA-SWG meeting and agreed key elements incorporated into the report of the SA-SWG. . Because of time constraints, re-opening of debate covered during the SA-SWG will need to be carefully managed.

4.1 Bigeye tuna

a. Status and trends*

The Scientific Committee will consider and finalize, as appropriate, statements provided from the SWGs regarding the current status and trend in abundance of the bigeye tuna stock.

b. Management information*

The Scientific Committee will consider and finalize, as appropriate, statements provided from the SWGs, in particular:

- Recommendations about current levels of catch/effort/fishing mortality (whichever is appropriate) taking into account the current status of the stock and results of projections.
- In accordance with paragraph 4 of the Conservation and Management Measure-2005-01, the Scientific Committee will identify levels of fishing effort to ensure that the bigeye and yellowfin stocks will remain at an agreed level above B_{MSY} ;
- Advice in relation to any conservation and management measures and resolutions adopted by the Commission;

- Recommendations on the use of temporary purse seine closures to achieve necessary reductions in catch and effort (e.g. season and length of closures). In accordance with paragraph 11 of the Conservation and Management Measure-2005-01, the Scientific Committee will review a draft proposal for a system of temporary purse seine closures.

CHAIR'S BRIEF

Purpose

To provide the Commission with summary statements on the status, trends and management information of the bigeye tuna stock in the Convention Area

Background

In addition to identifying and specifying current status and trend in abundance of the bigeye tuna stock, the Scientific Committee will prepare advice that responds to requests from the Commission. Conservation and Management Measure-2005-01 requests the Committee's deliberation on five points related with the bigeye tuna stock:

- Paragraph 2 – “These measures will be reviewed annually and may be adjusted, considering the advice of the Scientific Committee concerning fishing mortality levels associated with maintaining the bigeye and yellowfin stocks at or above B_{MSY} in accordance with Article 5 in the Convention.”
- Paragraph 4 – “The Scientific Committee, at its second meeting, shall identify levels of fishing effort to ensure that the bigeye and yellowfin stocks will remain at an agreed level above B_{MSY} .”
- Paragraph 11 – “In order to achieve the overall reduction in catch and effort required for bigeye and yellowfin tuna, in accordance with advice and recommendations received from the Scientific Committee, the Executive Director shall work with CCMs during 2006 to develop a proposal for consideration at the Third Session of the Commission that is consistent with the IATTC arrangements that allow for a system of temporary purse seine closures.”
- Paragraph 15 – “Beginning in 2006, the Scientific Committee and the Technical and Compliance Committee shall undertake to explore and evaluate mitigation measures for juvenile bigeye and yellowfin taken around FADs, in cooperation with other RFMOs, and present the results annually to the Commission. This work shall continue on an annual basis.”
- Paragraph 20 – “The second meeting of the Scientific Committee will review the catch of bigeye and yellowfin in other commercial fisheries in the Convention Area and provide advice to the Commission so that conservation and management measures can be developed.”

The SA-SWG will prepare responses to the requests from the Commission on the basis of outcomes and recommendations of the science service provider, SPC OFP, outcomes from Member's research, if any, and the consensus view Scientific Committee. The Executive Summary of the Report of the second regular session of the Scientific Committee will include the agreed responses.

Discussion

Regarding the five points listed above, the Scientific Committee may consider the following outcomes:

- Paragraph 2 – The Scientific Committee will provide an appropriate fishing mortality level for 2007 that maintains the bigeye stock at or above B_{MSY} . Since paragraph 2 belongs to a section of ‘General Rules of Application’ of the Measure, the Commission’s request for a recommended level of fishing mortality and related conditions, if any, may apply to all fishery types mentioned in the CMM-2005-01.
- Paragraph 4 – As this paragraph also belongs to ‘General Rules of Application’ of the Measure, the Commission’s request for an appropriate level of fishing effort and related conditions, if any, may apply to all fishery types mentioned in the Measure. Between the paragraphs 2 and 4, the Scientific Committee may clarify the relationship between fishing mortality, fishing effort and related assumptions. The unit of fishing effort may be discussed here for the purpose of this Measure and, as necessary, may be defined as a Commission level effort unit.
- Paragraph 11 – In order for the Commission to review a proposal on the “Temporary Closure for the Purse Seine Fishery” at its Third Session, the Committee may provide advice and recommendations that can be taken into consideration by the Executive Director as he consults with CCMs before the Third Commission meeting. The SPC OFP will provide information to support discussion on this matter and that takes into account arrangements adopted for the EPO by the IATTC at its 74th Commission Meeting in June 2006.
- Paragraph 15 – The Scientific Committee is required to examine scientific aspects of mitigation measures for juvenile bigeye taken around FADs. It is anticipated that SWGs will consider this issue and provide information and advice for the consideration of the Committee. The implementation of mitigation measures requires cooperation with the TCC and other RFMOs. Because no explicit timeline was defined in this paragraph and because of constraints on the amount of time available at SC2 to consider this matter the Committee could be invited to propose a program of work that could be jointly developed with the TCC and reported to the Commission.
- Paragraph 20 – The Scientific Committee will review reports from the SPC OFP on the catch level of bigeye in other commercial fisheries. The Committee will consider the impact of the catch from other commercial fisheries on the bigeye stock and provide advice, if necessary, to the Commission to develop draft conservation and management measures.

4.2 Yellowfin tuna

a. Status and trends*

The Scientific Committee will consider and finalize, as appropriate, statements provided from the SWGs regarding the current status and trend in abundance of the yellowfin tuna stock.

b. Management information*

The Scientific Committee will consider and finalize, as appropriate, statements provided from the SWGs, in particular:

- Recommendations about current levels of catch/effort/fishing mortality (whichever is appropriate) taking into account the current status of the stock and results of projections;
- In accordance with paragraph 4 of the Conservation and Management Measure-2005-01, the Scientific Committee will identify levels of fishing effort to ensure that the bigeye and yellowfin stocks will remain at an agreed level above B_{MSY} ;
- Advice in relation to any conservation and management measures and resolutions adopted by the Commission;
- Recommendations on the use of temporary purse seine closures to achieve necessary reductions in catch and effort (e.g. season and length of closures). In accordance with paragraph 11 of the Conservation and Management Measure-2005-01, the Scientific Committee will review a draft proposal for a system of temporary purse seine closures.

CHAIR'S BRIEF

Purpose

To provide the Commission with summary statements on the status, trends and management information of the yellowfin tuna stock in the Convention Area

Background

In addition to identifying and specifying current status and trend in abundance of the yellowfin tuna stock, the Scientific Committee will consider and finalize statements to the requests from the Commission which include requests implied in the conservation and management measures. The Conservation and Management Measure-2005-01 requests the Committee's deliberation on five points related with the yellowfin tuna stock:

- Paragraph 2 – “These measures will be reviewed annually and may be adjusted, considering the advice of the Scientific Committee concerning fishing mortality levels associated with maintaining the bigeye and yellowfin stocks at or above B_{MSY} in accordance with Article 5 in the Convention.”
- Paragraph 4 – “The Scientific Committee, at its second meeting, shall identify levels of fishing effort to ensure that the bigeye and yellowfin stocks will remain at an agreed level above B_{MSY} .”
- Paragraph 11 – “In order to achieve the overall reduction in catch and effort required for bigeye and yellowfin tuna, in accordance with advice and recommendations received from the Scientific Committee, the Executive Director shall work with CCMs during 2006 to develop a proposal for consideration at the Third Session of the Commission that is consistent with the IATTC arrangements that allow for a system of temporary purse seine closures.”
- Paragraph 15 – “Beginning in 2006, the Scientific Committee and the Technical and Compliance Committee shall undertake to explore and evaluate mitigation measures for juvenile bigeye and yellowfin taken around FADs, in cooperation with other RFMOs, and present the results annually to the Commission. This work shall continue on an annual basis.”
- Paragraph 20 – “The second meeting of the Scientific Committee will review the catch of bigeye and yellowfin in other commercial fisheries in the Convention Area and provide

advice to the Commission so that conservation and management measures can be developed.”

The SA-SWG will prepare responses to the requests from the Commission on the basis of outcomes and recommendations of the science service provider, SPC OFP, outcomes from Member’s research, if any, and the consensus view Scientific Committee. The Executive Summary of the Report of the second regular session of the Scientific Committee will include the agreed responses.

Discussion

Regarding the five points listed above, the Scientific Committee may consider the following outcomes:

- Paragraph 2 – The Scientific Committee will provide an appropriate fishing mortality level for 2007 that maintains the yellowfin stock at or above B_{MSY} . Since paragraph 2 belongs to a section of ‘General Rules of Application’ of the Measure, the Commission’s request for a recommended level of fishing mortality and related conditions, if any, may apply to all fishery types mentioned in the CMM-2005-01.
- Paragraph 4 – As this paragraph also belongs to ‘General Rules of Application’ of the Measure, the Commission’s request for an appropriate level of fishing effort and related conditions, if any, may apply to all fishery types mentioned in the Measure. Between the paragraphs 2 and 4, the Scientific Committee may clarify the relationship between fishing mortality, fishing effort and related assumptions. The unit of fishing effort may be discussed here for the purpose of this Measure and, as necessary, may be defined as a Commission level effort unit.
- Paragraph 11 – In order for the Commission to review a proposal on the “Temporary Closure for the Purse Seine Fishery” at its Third Session, the Committee may provide advice and recommendations that can be taken into consideration by the Executive Director as he consults with CCMs before the Third Commission meeting. The SPC OFP will provide information to support discussion on this matter and that takes into account arrangements adopted for the EPO by the IATTC at its 74th Commission Meeting in June 2006.
- Paragraph 15 – The Scientific Committee is required to examine scientific aspects of mitigation measures for juvenile yellowfin taken around FADs. It is anticipated that SWGs will consider this issue and provide information and advice for the consideration of the Committee. The implementation of mitigation measures requires cooperation with the TCC and other RFMOs. Because no explicit timeline was defined in this paragraph and because of constraints on the amount of time available at SC2 to consider this matter the Committee could be invited to propose a program of work that could be jointly developed with the TCC and reported to the Commission.
- Paragraph 20 – The Scientific Committee will review reports from the SPC OFP on the catch level of yellowfin in other commercial fisheries. The Committee will consider the impact of the catch from other commercial fisheries on the yellowfin stock and provide advice, if necessary, to the Commission to develop draft conservation and management measures.

4.3 Skipjack tuna

a. Status and trends*

The Scientific Committee will consider and finalize, as appropriate, statements provided from the SWGs regarding the current status and trend in abundance of the skipjack tuna stock.

b. Management information*

The Scientific Committee will consider last year's advice and finalize, as appropriate, statements provided from the SWGs, in particular:

- Recommendations about current levels of catch/effort/fishing mortality (whichever is appropriate) taking into account the current status of the stock and results of projections;
- Advice in relation to any conservation and management measures and resolutions adopted by the Commission;
- Recommendations on the possible impacts on skipjack of any recommended purse seine closures. In accordance with paragraph 11 of the Conservation and Management Measure-2005-01, the Scientific Committee will review a draft proposal for a system of temporary purse seine closures.

CHAIR'S BRIEF

Purpose

To provide the Commission with summary statements on the status, trends and management information of the skipjack tuna stock in the Convention Area

Background

No full assessment was conducted this year for skipjack tuna stock in the WCP-CA. The Scientific Committee will review the SA-SWG report and update recommendations if there were any new findings or changes identified in 2006.

In relation with conservation and management measures adopted last year, only one provision in the Conservation and Management Measure-2005-01, paragraph 16, has measures related to skipjack. There is no direct request for the Scientific Committee to provide advice and recommendations in relation to this Measure at SC2. Regarding paragraph 11 of the Measure, however, the Scientific Committee at its first meeting recommended an examination of the effects of purse-seine measures on skipjack catches be analyzed in future (paragraph 5.18, SC1 Report). The ME-SWG also considered this issue – i.e., “reductions or modifications of purse seine effort would affect catches of skipjack, and these should be investigated in the future” (paragraph 27 f., Appendix VII (ME-SWG Report) of the SC1 Report).

Discussion

The Scientific Committee may discuss the impacts of time closure and reduction in the use of FADs, if activated, on the catch rate of skipjack.

4.4 South Pacific albacore tuna

a. Status and trends*

The Scientific Committee will consider and finalize, as appropriate, statements provided from the SWGs regarding the current status and trend in abundance of the South Pacific albacore tuna stock.

b. Management information*

The Scientific Committee will consider and finalize, as appropriate, statements provided from the SWGs, in particular:

- Recommendations about current levels of catch/effort/fishing mortality (whichever is appropriate) taking into account the current status of the stock and results of projections; and
- Advice in relation to any conservation and management measures and resolutions adopted by the Commission.

CHAIR'S BRIEF

Purpose

To provide the Commission with summary statements on the status, trends and management information of the south Pacific albacore tuna stock in the Convention Area

Background

No full assessment was conducted this year for SP albacore tuna stock in the WCP-CA. The Scientific Committee, however, will review the SA-SWG report and update recommendations, based on any new findings or changes, identified during the year.

In relation with Conservation and Management Measure-2005-02, paragraph 4 requests the Commission to review the Measure on the basis of advice from the Scientific Committee.

Discussion

In order for the Commission to review CMM-2005-02, the Scientific Committee may need to clarify some of the following points:

- The significance of biological uncertainties on the formulation of management information for the SP albacore tuna stock;
- The impacts of local depletion on the whole albacore stock in the Pacific;
- The impacts on fishable (or vulnerable) biomass versus spawning biomass.

The geographic area for the “whole stock” is defined as south of the equator from 140°E to 110°W while the area related to local depletion is defined as the ‘PICT area for domestic longline fisheries’ in the region, 10-28°S and 160°E to 140°W, a subset of the area for the whole stock (SA WP-3). Clarification of the dynamic relations between the two boundaries may help the Commission’s annual review on the Measure.

Paragraphs 1 and 4 of section 4 (Summary and Conclusions) in the SA WP-3 states:

1. The current stock assessment ... stock. Substantially higher yields could be taken from the stock without impacting on the biological sustainability of the stock.

4. Recent levels of fishing effort from all fisheries combined have reduced the level of biomass available to the domestic longline fisheries by approximately 30%. At a regional level, increases in fishing effort in the PICT domestic longline fisheries will result in declines in CPUE due to a decline in exploitable biomass. For example, a doubling of domestic longline fishing through the region is predicted to result in approximately a further 25–30% decrease in longline exploitable biomass. These impacts are considerably greater than the impact of large increases in the level of fishing effort by the distant-water fleet in the south-eastern area of the fishery.

- Update on the reference points for this stock.

4.5 Swordfish in the Southwest Pacific

a. Status and trends*

The Scientific Committee will consider and finalize, as appropriate, statements provided from the SWGs regarding the current status and trend in abundance of the swordfish stock in the South Pacific.

b. Management information*

The Scientific Committee will consider and finalize, as appropriate, statements provided from the SWGs, in particular:

- Recommendations about current levels of catch/effort/fishing mortality (whichever is appropriate) taking into account the current status of the stock and results of projections.

CHAIR'S BRIEF

Purpose

To provide the Commission with summary statements on the status, trends and management information of the swordfish in the southwest Pacific

Background

At the first Scientific Committee meeting, Australia presented a preliminary study on the assessment of swordfish in the southwest Pacific. This assessment may be updated at SC2. Two papers on modeling work of the swordfish stock (ME WP-3 and 4) will be introduced at the ME-SWG meeting and one stock assessment summary paper SA WP-7 will be introduced at the SA-SWG meeting.

Discussion

The Scientific Committee may discuss the status of swordfish in the south west Pacific and any conservation and management advice that may be provided to the Commission.

4.6 Northern stocks

a. Status and trends*

The Scientific Committee will consider and finalize, as appropriate, statements provided from the SWGs regarding the current status of northern stocks, especially North Pacific albacore, Pacific bluefin tuna, and North Pacific striped marlin, and their recent trends in abundance.

b. Management information*

The Scientific Committee will consider and finalize for the subsequent consideration of the Northern Committee and the Commission management advice and recommendations provided from the SWGs particularly in relation to stocks of North Pacific albacore, Pacific bluefin tuna and North Pacific striped marlin.

CHAIR'S BRIEF

Purpose

To inform the Commission and the Northern Committee of any advice and recommendations regarding northern stocks

Background

In accordance with the draft MoU between the Commission and the International Scientific Committee for Tuna and Tuna-like Species in the North Pacific Ocean (ISC), the ISC will provide its Committees and Working Groups reports, prepared under the Rules and Procedures for the Conduct of the ISC Committee and Subsidiary Bodies, including relevant background reports, directly to the Northern Committee, the Commission, and the Scientific Committee. The Scientific Committee will review the ISC reports and provide advice and/or recommendations on the northern stocks, if any, to the Northern Committee and the Commission.

Species of interest to the ISC include north Pacific albacore, northern Pacific bluefin, yellowfin, bigeye, striped marlin, northern stock of swordfish, and bycatch species. However, paragraph 5 of the Annex I of the Commission's Rules of Procedure relating to the Northern Committee, state:

5. "Northern stocks" are understood to be northern Pacific bluefin, northern albacore and the northern stock of swordfish. The Commission, based on the advice of the Scientific Committee, shall periodically review and determine whether this list should be revised.

According to this Rule, the above three species may be considered at this meeting. However, the Scientific Committee may recommend to the Commission, as considered appropriate, any additional species for assessment and review.

It was noted in the SC1 Report (paragraphs 7.6, 7.6, 7.30, and 7.31) that swordfish of both the north and south Pacific will be investigated in collaboration with the ISC.

4.7 Other stocks

a. Status and trends*

The Scientific Committee will consider assessments for other species, if available. Discussion under this item may include ecological risk assessment which will be reviewed by the Ecosystem and Bycatch SWG. The Scientific Committee will finalize, as appropriate, statements provided from the SWGs regarding the current status of any other stocks, including southwest Pacific striped marlin, if available and trends in abundance.

b. Management information*

The Scientific Committee will consider and finalize, as appropriate, statements of management advice provided from the SWGs on any other stocks described in agenda 4.7a.

CHAIR'S BRIEF

Purpose

To prepare advice and recommendations regarding any other stocks for submission to the Commission.

Background

Discussion under this agenda item may include non-target or associated or dependent (NTAD) species including seabirds, sea turtles and marine mammals. The list of NTAD species covered in the SC1 Report and Resolution-2005-03 (Resolution on non-target fish species) include southwest Pacific swordfish, striped marlin, blue marlin, blue shark, oceanic white tip shark, silky shark, mahi mahi, rainbow runner, wahoo, pelagic stingrays, seabirds, turtles, and marine mammals.

AGENDA ITEM 5 BYCATCH MITIGATION

5.1 Seabirds*

The Scientific Committee will review and finalize, as appropriate, recommendations from the relevant SWGs on specific seabird bycatch mitigation measures for consideration at the Third Regular Session of the Commission.

CHAIR'S BRIEF

Purpose

For the Commission to consider mitigation measures for seabird bycatch

Background

Resolution-2005-01 (Resolution on the incidental catch of seabirds) adopted at the second Commission meeting as a non-binding recommendation includes implementation of the IPOA-Seabirds, data submission on interaction with seabirds to enable the Scientific Committee to estimate seabird mortality in all fisheries and for the Commission, in consultation with the Technical and Compliance Committee, to consider mitigation measures.

Paragraph 35 in the 2nd Commission Report requested the Scientific Committee to take the practical steps necessary to improve recording and monitoring of seabird interactions, including species involved and rates of total mortality in the Convention Area.

In addition, paragraph 36 requested that the Scientific Committee, in consultation with the Technical and Compliance Committee, should:

- investigate seabird mitigation measures applied and being tested by other RFMOs, particularly those of the Commission for Conservation of Antarctic Marine Living Resources;
- investigate the utility of implementing compatible measures; and
- recommend specific seabird mitigation measures for consideration at the Third Regular Session of the Commission.

An information paper, GN IP-3 collates seabird mitigation measures from other RFMOs.

Discussion

The Scientific Committee may consider characteristics and differences in fisheries interaction with seabirds, their geographical characteristics, level of incidental mortalities, and practicality and applicability of possible mitigation measures in the WCP-CA. The Committee may consider, in association with the Technical and Compliance Committee, draft seabird mitigation measures that could be implemented throughout the WCP-CA. The Committee may consider establishing a small drafting group to prepare a draft recommendation for the Committee's review at the plenary.

The establishment of specific drafting groups may be discussed at the Heads of Delegation meeting on Sunday 6th August. If a drafting group is established for this item the Scientific Committee could review the results of its work at this point.

5.2 Sea turtles*

The Scientific Committee will review progress from SWGs with development of a turtle research program and provide advice on the basis of any trials for consideration by the Commission.

CHAIR'S BRIEF

Purpose

For the Commission to consider mitigation measures for sea turtle bycatch

Background

Resolution-2005-04 (Resolution to mitigate the impact of fishing for highly migratory fish species on sea turtles), adopted at the second Commission meeting as a non-binding recommendation, includes the following elements:

- Implementation of the FAO Guidelines to Reduce Sea Turtle Mortality in Fishing Operations;
- Undertaking research and trials of appropriate-size circle hooks;
- Considering measures related to the use of circle hooks at its annual Session in 2006;
- Cooperation with the IATTC in sharing data and developing compatible measures;
- Collection of appropriate information from the existing observer program;
- Supporting developing State Members, territories, and possessions;
- CCM's report on the implementation of the measure; and
- Monitoring the application of the measure and developing further strategies for the Commission's consideration in 2007.

In addition, paragraph 37 in the second Commission meeting report requested both the Scientific Committee and Technical and Compliance Committee to provide advice, recommendations or any guidelines for the Commission to develop a program that includes:

- research and development of gear and bait alternatives,
- promotion of the use of available bycatch mitigation technology,
- promotion and strengthening of data collection programs to obtain standardized information to develop reliable estimates of the bycatch of sea turtles,
- biological research on sea turtles, including the identification of migration routes or other areas of spatial or temporal importance,
- industry education, and
- development and promotion of safe handling techniques and other techniques to improve sea turtle conservation.

At paragraph 38, the Secretariat, in cooperation with the Scientific Committee, was requested to make efforts to centralize bycatch and observer data to obtain better estimates of total catch and mortalities of sea turtles by fisheries targeting highly migratory fish species covered by the Convention within the Convention Area. The Commission also requested the Scientific Committee to recommend practical steps to improve monitoring and reporting of sea turtle interactions in the Convention Area, including the development of data standards and specifications and reporting requirements.

Discussion

If time is available, the Scientific Committee may consider any recommendations from the SWG regarding any research and outcomes of any trials on the use of appropriate-size circle hooks in commercial, recreational, and artisanal fisheries and make recommendations on possible measures relating to the use of circle hooks.

The Committee may review the relevant IATTC measures (Attachment 1), and make recommendations on any possible mitigation measures for the Commission's deliberation.

The Committee may also choose to consider scientific aspects of the items included in paragraph 37 in the Commission Report including the development of a program of work that may be subsequently recommended to the Commission, to address those items. Also the Committee should be invited to provide advice to the Secretariat in relation to paragraph 38.

Considering the large amount of work associated with this the Committee may extend its deliberation and discussion on sea turtle mitigation to future sessions of the Committee. The preparation of advice and recommendations in relation to this item would benefit from a small drafting group. The possibility of establishing such a drafting group may also be discussed during the Heads of Delegation meeting on Sunday 6th August.

5.3 Juvenile bigeye and yellowfin tuna*

Beginning in 2006, the Scientific Committee will annually review any mitigation measures, explored and evaluated by the SWGs, for juvenile bigeye and yellowfin taken around FADs, and finalize advice and recommendations for consideration by the Commission.

CHAIR'S BRIEF

Purpose

Mitigation measures for juvenile bigeye and yellowfin taken around FADs will be reviewed and, if appropriate, advice and recommendations will be prepared for the Commission.

Background

Paragraphs 12-15 of the Commission's Conservation and Management Measure-2005-01 deals with 'Controls of Sets on FADs for the Purse Seine Fishery' and request the Scientific Committee as follows:

12. For the purposes of these Measures, the term Fish Aggregation Device (FAD) means any man-made device, or natural floating object, whether anchored or not, that is capable of aggregating fish.
13. CCMs shall develop management plans for the use of FADs (anchored and drifting) within waters under national jurisdiction which shall be submitted to the Commission.
14. The Commission will work with CCMs to develop methods to reduce catches of juvenile bigeye and yellowfin tuna caught in association with FADs.
15. Beginning in 2006, the Scientific Committee and the Technical and Compliance Committee shall undertake to explore and evaluate mitigation measures for juvenile bigeye and yellowfin taken around FADs, in cooperation with other RFMOs, and present the results annually to the Commission. This work shall continue on an annual basis.

Analyses conducted in 2005, "Effects on stocks of measures to mitigate catch of juvenile bigeye and yellowfin", are described in paragraphs 5.12 and 5.13 of the SC1 Report:

EFFECTS ON STOCKS OF MEASURES TO MITIGATE CATCH OF JUVENILE BIGEYE AND YELLOWFIN

5.12 Several of the projection scenarios simulated measures to mitigate the catch of juvenile bigeye and yellowfin. These included reductions in catch and effort of the purse seine and Indonesian and Philippines fisheries (scenarios 3 and 5),

transfer of purse seine effort from log and FAD sets to unassociated school sets (scenario 6) and various area-season closures of the purse seine fishery (scenarios 9, 9A, 10, and 10A).

5.13 Transfer of effort from log and FAD sets to unassociated school sets resulted in gains in adult biomass as well as an increase in overall catch because of fishery interactions effects (i.e. the reduced catch of juveniles resulted in gains to both the population and the longline catch over the ten-year time horizon).

One of the priority tasks of the FT-SWG is to identify the impact of FADs on fishing mortality of juvenile target species and all life phases of non-target species (paragraph 7.20e, SC1 Report). In addition, the SC1 considered the determination of the dynamics of target and non-target species around FADs as a priority task for 2006 (paragraph 7.39d, SC1 Report).

Discussion

The Scientific Committee is requested to respond to requests from the Commission as stipulated in paragraph 15. The Committee will review any findings from the relevant SWG and prepare a summary report together with recommendations for the consideration of the Commission.

5.4 Other fish and non-fish bycatch*

The Scientific Committee will consider any advice and recommendations from the SWGs on the management of non-target fish species and mitigation of non-fish bycatch.

CHAIR'S BRIEF

Purpose

For the Committee to consider advice to the Commission concerning measures for other fish and non-fish bycatch

Background

There are many provisions in the Convention that the Commission should pay much attention to non-target species. Article 5 (paragraphs (d), (e), and (i)) and Article 6 (paragraphs 1(b), (c), and 4) include members' actions as principles and measures for conservation and management on non-target species, both fish and non-fish species. Article 10 requests the Commission to adopt measures, when necessary, for non-target species and species associated with or dependent upon the target stocks (NTADs). Article 12 has a list of functions that the Scientific Committee should conduct on NTADs (paragraphs 2(c)-(e), and (g)). Paragraph 3(b) of Article 13 also requests science experts to include assessments on NTADs.

At its first meeting, the Scientific Committee discussed estimates of the mortality of non-target species (paragraphs 5.14-17, SC1 Report). It recommended undertaking an ecological risk analysis and improving estimates of catches of non-target species as a modeling priority for 2006.

At its second meeting the Commission adopted Resolution-2005-03 on non-target species such as mahi mahi, rainbow runner and wahoo. The Resolution did not request any action from the Scientific Committee.

Discussion

The Scientific Committee will discuss catch estimates and outcomes from the relevant SWGs in relation with non-target species.

AGENDA ITEM 6 DATA AND INFORMATION

6.1 Observer programmes

a. Scientific priorities and objectives of the regional observer programme

The Scientific Committee will review any advice and recommendations in relation to scientific priorities and objectives of the regional observer program from the SWGs, begin to develop a program of work for its implementation, and make recommendations, if any, for subsequent consideration by the Commission.

CHAIR'S BRIEF

Purpose

To provide the Commission with scientific priorities and objectives of the regional observer programme for the development and implementation of the program

Background

At its first meeting, the Scientific Committee, including Statistics SWG, did not have sufficient time to discuss scientific aspects of observer programs such as objectives, coverage rates, sampling protocols, standards for data collection, and the relationship between national and regional observer programs. The following summary table includes key elements that have been considered from the PrepCon for the development of a regional observer program (WCPFC/TCC1/14)

Summary Elements for Development of Observer Programmes

Items	General considerations	Scientific aspects
Design	<ul style="list-style-type: none"> • Parameters and guidelines for observer program • Coordination and deployment of observers between regional, sub-regional and national observer programs (compatibility) • Phase-in or incremental approach • Guidelines for captains, crew, and observers with respect to safety, duties, and responsibilities • Training and certification – independent and impartial • Data confidentiality • Cost effectiveness 	<ul style="list-style-type: none"> • Specific objectives • Operating instructions (standing orders) including prioritization on the use of time • Evaluation of observers • Data confidentiality
Data	<ul style="list-style-type: none"> • Types of data and format standardization for data collection and reporting • Effective level of Coverage 	<ul style="list-style-type: none"> • Types of scientific data and format standardization • Sampling protocols, including

		port-sampling collection <ul style="list-style-type: none"> • Coverage rate targeted and achieved • Validation of catch
--	--	---

The First Regular Session of the TCC recommended that:

- The regional observer programme, which will have both scientific and compliance functions, be coordinated, to the extent possible, with existing national, regional or sub-regional programmes. The TCC further advised that standards and procedures, including training and certification procedures, need to be developed to facilitate the contribution of existing programmes to the Commission’s programme;
- The Scientific Committee and the Technical and Compliance Committee formally collaborate to consider the scientific and technical and compliance elements of the regional observer programme by convening a joint meeting in association with SC2 or TCC2; and
- The Commission’s observer programme coordinator be recruited in 2006 as opposed to 2007, as recommended in WCPFC/PrepCon/37. This will have financial implications for the Commission of approximately \$95,000. As a first task, the coordinator would draft a programme document, as outlined in paragraph 25 above

And paragraph 57 of the first session Commission’s Summary Report says:

57. In relation to the regional observer program, the Commission agreed to proceed with the hybrid option recommended by PrepCon Working Group 1 and identified in WCPFC/TCC1/14, also taking into account transshipment observer programs of other tuna RFMOs, and requested the Scientific Committee and the Technical and Compliance Committee to begin to develop a program of work for its implementation.

Discussion

A working paper for the Commission’s regional observer program (GN WP-8) will address most of the general issues of the program for the Committee’s review. The Committee will provide comments on the scientific priorities and objectives of the program in the paper. The Technical and Compliance Committee will also review the paper, and a revised document will be put on table for the Commission’s review.

b. Levels of observer coverage*

The Scientific Committee will consider any advice from the SWGs on levels of observer coverage, and provide advice and recommendations, for subsequent consideration by the Commission.

CHAIR’S BRIEF

Purpose

For the Committee to consider, and subsequently prepare advice for the Commission, levels of observer coverage for various fleets and fisheries in the WCPFC-CA

Background

While paragraph 3.22 of the SC1 Report describes the rates of observer coverage of tuna fisheries in the WCP-CA, paragraph 3.42 notes uncertainties in the mortality estimates of non-target species arising from the low observer coverage. At its first meeting, the Scientific Committee recommended improvement of observer coverage to improve data quality for assessment. As a consequence, the Commission endorsed research to examine the relationship between observer coverage rates and the accuracy and reliability of the estimates by the observers of catches by the purse seine fleets. Levels of coverage are constrained by the specific objectives of the program, the vessel's space for the observer's accommodation, characteristics of the fishery, observer costs, and the availability of qualified observers on special purposes.

Discussion

Paper GN WP-8 will discuss coverage rates of the Commission's observer program. Both the Scientific Committee and the Technical and Compliance Committee will provide comments on the levels of observer coverage proposed in the paper. Based on these comments, a revised document for the development of regional observer program will be put on table for the Commission's review in December 2006.

The Scientific Committee will also review any statements or recommendations from the relevant SWGs on the examination of relationship between observer coverage rates and reliability of CPUE estimates (ST IP-3).

c. Data collection requirements*

The Scientific Committee will review any advice on data collection requirements from the SWGs, and provide advice and recommendations, if any, for subsequent consideration by the Commission.

CHAIR'S BRIEF

Purpose

For the Committee to consider, and subsequently prepare advice for the Commission on the types of data to be collected by observers

Background

The Commission has not given detailed consideration to data collection requirements. SPC and the FFA have produced an Observer Workbook for purse-seine and longline fisheries which includes various data collection requirements.

Discussion

Selected sections of the FFA/SPC Workbook may serve as useful background for discussion in the Scientific Committee on the types of data to be collected by observers. The Committee may propose a timeline and strategy for further consideration of data collection requirements. A small drafting group may assist in this endeavor?

6.2 Data confidentiality, security, and dissemination

CHAIR'S BRIEF

General Information

The SPC OFP provides scientific services through the Memorandum of Understanding between the Commission and the SPC. One of the services includes: data management services, including, as appropriate, the collection, compilation and dissemination of fisheries data according to agreed principles and procedures established by the Commission, data processing, and database development and maintenance, taking full account of the procedures and policies of both organisations relating to the confidentiality, disclosure and publication of data.

Throughout previous discussions on data issues, members of the Commission have identified the urgency of establishing dissemination rules and data security issues in order to collect operational level data from members. To establish those principles and procedures for the dissemination and rules and procedures to govern security and confidentiality of the Commission's data, an ad hoc Task Group [Data] was established at the second Commission meeting in 2005.

a. Principles and procedures for the dissemination of scientific data by the Commission*

The Scientific Committee will review any advice and recommendations from the SWGs and the ad hoc Task Group [Data] on Principles and Procedures for the Dissemination of Scientific Data by the Commission, and provide advice and recommendations, if any, for subsequent consideration by the Commission.

CHAIR'S BRIEF

Purpose

For the Committee to consider, and subsequently prepare advice for the Commission on principles and procedures for the dissemination of scientific data

Background

The report of the ad hoc Task Group [Data] which met in the week preceding SC2 will provide material for discussion under this agenda item (GN WP-9).

Recommendation

The Committee will consider the adoption of draft principles and procedures prepared by the ad hoc Task Group for the dissemination that may be applied to both of scientific data and compliance data as a simplified manner.

b. Rules and procedures to govern the security and confidentiality of data collected and held by the Commission*

The Scientific Committee will review any advice and recommendations from the SWGs and the ad hoc Task Group [Data] on rules and procedures to govern the security and confidentiality of data collected and held by the Commission, and provide advice and recommendations, if any, for subsequent consideration by the Commission.

CHAIR'S BRIEF

Purpose

For the Committee to consider, and subsequently prepare advice for the Commission on rules and procedures on the security and confidentiality of data

Background

The report of the ad hoc Task Group [Data] which met in the week preceding SC2 will provide material for discussion under this agenda item (GN WP-10).

Recommendation

The Committee will consider the adoption of draft rules and procedures on the security and confidentiality of data collected and held by the Commission.

6.3 Indonesia and Philippines Data Collection Project (IPDCP) update and review

The IPDCP Steering Committee meeting will be held in the margins of the first week of the Second Regular Session of the Scientific Committee. Membership of the Steering Committee should include Indonesia, the Philippines, donors, the Chairman of the Scientific Committee, the SPC OFP, and interested Members, Participating Territories and Cooperating Non-members.

The Scientific Committee will review the Steering Committee Chair's summary report and provide advice and recommendations, if any, for subsequent consideration by the Commission.

CHAIR'S BRIEF

Purpose

For the Commission to receive a report from the IPDCP Steering Committee relating to progress with implementation of the Project and to consider means, for possible subsequent recommendation to the Commission to reduce uncertainties in the assessment of the western and central Pacific tuna stocks resulting from inadequate data from the Indonesian/Philippine region.

Background

During the first session of Working Group II at PrepCon VI, Mr Tim Lawson from SPC OFP presented a "Proposal for Monitoring the Catches of Highly Migratory Species in the Philippines and the Pacific Ocean Waters of Indonesia," which includes the following summary:

The lack of accurate catch statistics, effort data, and species composition and size composition data for the Philippines and the Pacific Ocean waters of Indonesia has been responsible for much of the uncertainty in the stock assessments for bigeye and yellowfin in the Western and Central Pacific Ocean. Improved monitoring of the tuna fisheries of the Philippines and the Pacific Ocean waters of Indonesia, therefore, has been strongly supported throughout the SCTB and the PrepCon periods.

The primary objective of the project is to collect and compile data that can be used to reduce the uncertainty of the assessments of tuna stocks in the WCPO. The current monitoring of tuna fisheries in the Philippines and Indonesia is insufficient for the purposes of the Western and Central Pacific Fisheries Commission. Therefore, a related objective of the project is to improve the monitoring of tuna fisheries in the Philippines and Indonesia so that both countries will be able to fulfill their future obligations in regard to the provision of fisheries data to the Commission.

The Commission has endorsed a recommendation from the Scientific Committee on the IPDCP, namely that:

- a) the Commission adopt the Indonesia and Philippines Data Collection Project and assume responsibility for its management as soon as possible;
- b) the Commission establish the IPDCP Steering Committee to monitor project activities and developments in regard to funding, and to report thereon to the Scientific Committee. Membership of the Steering Committee should include Indonesia, the Philippines, donors, the Chairman of the Scientific Committee and the SPC OFP; and
- c) Commission members and potential members contribute, as soon as possible, the balance of the funds required to implement the IPDCP.

Two Steering Committee meetings of the Indonesia and Philippines Data Collection Project have been convened. The first meeting was held on Wednesday, 21 April 2004, in Bali, Indonesia, immediately following the first session of Working Group II at PrepCon VI. The second meeting was held on Wednesday, 15 December 2005, in Pohnpei, Federated States of Micronesia, during the second regular session of the Western and Central Pacific Fisheries Commission.

Discussion

A third Steering Committee meeting is planned for the first week of SC2. Further details on the IPDCP will be introduced and the outcome of the third Steering Committee meeting will be reported (GN IP-2). The Scientific Committee is invited to make recommendations for the effective implementation of this project – including providing advice and recommendations regarding its future.

6.4 Tagging initiatives

The Scientific Committee will review advice and recommendations from the SWGs regarding a proposal for the implementation of a regional tagging program including the establishment of a steering committee to oversee the project, a joint WCPFC-IATTC Pacific-wide tagging program, and provide advice and recommendations, if any, for subsequent consideration by the Commission.

CHAIR'S BRIEF

Purpose

For the Scientific Committee to consider providing appropriate advice to the Commission in relation to a tagging program in the Pacific with initial discussion of a pilot initiative in Papua New Guinea.

Background

Dr John Sibert from University of Hawaii has a good summary of the value of tagging:

Tagging is an important tool for biological and behavioral studies of fish and has special importance in the assessment of highly migratory fish stocks (HMS). Stock assessments for other types of fish, e.g. small pelagic and demersal species, benefit greatly from “fishery independent” survey data. In many areas, periodic acoustic or scientific trawl surveys provide estimates of population size that are independent of data from the commercial fishery. Survey data provide independent estimates of biomass and reduce the uncertainties in the stock assessments. Unfortunately, the usual scientific survey methods are not applicable to HMS. Tagging studies on all scales are the closest approximation to fishery independent data currently available to support WCPFC management activities. Tagging studies provide information on rates and direction of movement, mortality, habitat utilization, aggregation and vulnerability, all of which are directly used in the stock assessments. Tagging activities include:

- mass tagging with conventional tags to determine large-scale population movement and mortality rates;
- specialized deployment of data storage tags, both conventional archival tags and pop-up satellite tags, to better define horizontal and vertical habitat preferences;
- deployment of other types of electronic tags to determine small-scale movements in relation to natural features and floating objects, such as fish aggregating devices.

Also at its first meeting, the Scientific Committee recommended three areas of tagging study as described above: Pacific-wide tagging, habitat study, and FAD-related movement study. The Scientific Committee will review a preliminary report prepared by the SPC-OFP concerning a tagging program that will commence in Papua New Guinea in August 2006 (GN WP-11).

Discussion

The Scientific Committee may consider issues associated with a large-scale tagging program such as appropriate timeframes, level of costs, geographic coverage, an incremental approach, etc. The Committee may develop a workplan, advice and recommendations for the Commission’s deliberation on possible adoption and implementation of the regional tagging program.

AGENDA ITEM 7 COOPERATION WITH OTHER ORGANISATIONS

CHAIR’S BRIEF

General Information

General paper GN WP-6 provides background information on the current status and future initiative of WCPFC’s cooperation with other organizations. The document includes relevant memoranda of understanding that are already established or under arrangement with such organizations.

7.1 Technical and Compliance Committee

The Scientific Committee will advise the Technical and Compliance Committee in regard to any issues arising during the meeting that may be relevant to the work of the TCC.

Issues could include, among other, recommendations from the Scientific Committee in relation to:

- observer programmes;
- data confidentiality, security, and dissemination; and
- bycatch mitigation.

CHAIR'S BRIEF

Purpose

To explore means to promote cooperation, consultation and collaboration between subsidiary bodies to maximise the effectiveness of the Commission's work

Background

At its first meeting, the Scientific Committee agreed on the need for cooperation between the Scientific Committee and the Technical and Compliance Committee, where the work of the two Committees is complementary.

Discussion

The main areas of potential cooperation between the two subsidiary bodies include:

- development of conservation and management measures to mitigate juvenile bigeye and yellowfin and NTAD species – fishing gear and technology;
- establishment and operation of the Commission's regional observer program – priorities and objectives;
- ad hoc task group on data security, confidentiality and dissemination;

As the items above being dealt prior to this agenda, the Scientific Committee will clarify specific areas of cooperation with the TCC. Other areas to be covered under this agenda may include rules of procedure of subsidiary bodies (Agenda Item 10.1) and Commission's publication policy (Agenda Item 11.1).

7.2 IATTC

The Scientific Committee will review any comments from the IATTC on the draft MOU between the WCPFC and IATTC, discuss any other issues of cooperation such as use of common data sources, collaboration on stock assessments, and any other research programmes of potential mutual interest (e.g. tagging, bycatch mitigation), and provide advice and recommendations, if any, for subsequent consideration by the Commission.

CHAIR'S BRIEF

Purpose

For the Scientific Committee to provide the Commission with advice and recommendations aimed at promoting efficient and cost-effective cooperation with the IATTC

Background

Article 22 of the Convention outlines specific organizations such as SPC OFP and IATTC that the Commission is required to cooperate with. At the first Scientific Committee meeting, the IATTC requested that the WCPFC consider three important areas of immediate cooperation with the IATTC and the Committee responded as follows (paragraph 11.9-11, SC1 Report):

1) Exchange of relevant science data

Under the Agreement on the Exchange of Tuna Fisheries Data between IATTC and SPC (March 2003),

- SPC provides IATTC with catch and effort data aggregated by time-area strata covering the Western and Central Pacific Ocean and operational catch and effort data covering trips that take place at least in part in the Eastern Pacific Ocean, and
- IATTC provides SPC with catch and effort data aggregated by time-area strata covering the Eastern Pacific Ocean and operational data covering trips that take place at least in part in the Western and Central Pacific Ocean.

The Scientific Committee noted that the agreement would need to be modified to refer to the Commission's statistical area, rather than the Western and Central Pacific Ocean.

2) Shark stock assessments

The Scientific Committee noted the current IATTC Resolution on the Conservation of Sharks and the text of a letter from the IATTC to the WCPFC on this matter. The Scientific Committee recommended that the research program on the assessment of other species, such as blue shark, oceanic white tip, silky shark, striped and blue marlin, swordfish, and wahoo, once approved by the Commission, be provided to the IATTC to better foster cooperative research.

3) IATTC stock assessment working group matters

The Scientific Committee noted the report of the most recent IATTC Stock Assessment Working Group and the text of a letter from the IATTC to the WCPFC on this matter. The Scientific Committee agreed that relevant immediate cooperation with the IATTC might include:

- the continuation of the Pacific-wide assessment of bigeye tuna being led by the SPC-OFP; and
- a joint WCPFC-IATTC Pacific-wide tagging program to study the interaction of tunas from the two main areas of the Pacific (e.g. EPO and WCPO).

Discussion

The Scientific Committee will review a draft MOU between the Commission and the IATTC.

7.3 ISC

The Scientific Committee will review comments from the ISC on the draft MOU between the WCPFC and ISC, discuss any other issues of cooperation such as use of common data sources, collaboration on stock assessments, attendance at ISC meetings, and research

programmes, and provide advice and recommendations, if any, to be considered by the Northern Committee and the Commission.

CHAIR'S BRIEF

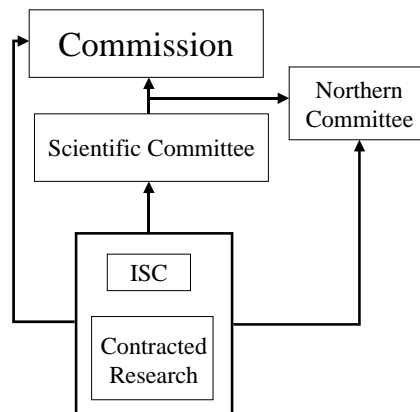
Purpose

For the Scientific Committee to provide the Northern Committee and the Commission with advice and recommendations aimed at promoting efficient and cost-effective cooperation with the ISC in relation to northern stocks

Background

The ISC is an international science organisation that was established in 1995 (<http://isc.ac.affrc.go.jp>). Its purpose is to 1) enhance scientific research and cooperation for conservation and rational utilization of the tuna and tuna-like species which inhabit the North Pacific Ocean during all or part of their life cycle; and 2) establish the scientific groundwork so at some future time a multilateral regime for the conservation and rational utilization of the region's pelagic fish stocks maybe created.

Annex III of WCPFC/PrepCon/38 outlines a possible scheme for the flow of scientific information and advice in respect to the northern stocks (a schematic diagram below), which is reflected in the draft MOU between the Commission and the ISC. The Commission adopted the Report of the First Regular Session of the Northern Committee, including a draft Memorandum of Understanding between the ISC and the Commission (paragraph 48, Commission Report 2005). That MoU, which required the completion of Annex 2, was further discussed at the ISC session in La Jolla in March 2006. The recommendation of that meeting, which completed a draft of Annex 2, was that the new text be referred to the Northern Committee for final consideration before being presented to the Third Regular Session of the WCPFC for final endorsement at Apia in December 2006. The MOU requests a full review of the terms and operation of the MOU and its Annexes to be conducted as soon as practicable after the first full 12 months of operation following its signature by the Commission and the ISC and subsequently every three years.



The ISC reviewed stock status information for albacore, bigeye tuna and yellowfin tuna for 2004. It concluded that exploitation of these stocks is at high levels and fishing mortality needs to be reduced or not increased further.

There were some concerns that the scope of the ISC (species that spend all or part of their life cycle in the North Pacific Ocean) could lead to an unnecessary duplication of effort. It was noted that the ISC is concerned with three of the four main tuna species assessed through the Scientific Committee and that most of the members of the ISC are already members or cooperating non-members of the WCPFC.

Issues

- Finalization of Annex 2 of the MOU between the Commission and the ISC
- Stock assessment of swordfish in collaboration with the ISC
- Possible data exchange between the Commission and the ISC.

7.4 SPC

The Scientific Committee will review the 2005/2006 MoU between the WCPFC and SPC and recommend any amendments for subsequent consideration by the Commission. Note that actual schedule of scientific services to be provided by SPC-OFP under the MOU will be discussed following the finalization of the 2007 work program. The Scientific Committee may also consider other SPC and WCPFC initiatives of mutual interest under this item.

CHAIR'S BRIEF

Purpose

To promote mutual cooperation and to provide the Commission with the best advice and recommendations on stock status, management information and directions for 2007 science services through the MOU or other means of cooperation.

Background

The 2005/06 MOU between the Commission and the SPC includes the 'Agreement for the Provision of Scientific Services to the Commission and Assistance to Members by the Secretariat of the Pacific Community' which terminates on 31 December 2005. The scope of work includes 1) data management, statistical analyses and related services; 2) stock assessment and related analytical services; 3) research services; and 4) other advisory services.

Discussion

The Scientific Committee will review and, as necessary, propose refinements to the MOU with the SPC-OFP for science services in 2007. The Scientific Committee may specify analyses required to support anticipated deliberations at the third Commission meeting.

7.5 CCSBT

The Scientific Committee will review the current MoU between the WCPFC and CCSBT, consider any other areas of interaction and cooperation between the two organizations, and provide advice and recommendations, if any, for subsequent consideration by the Commission.

CHAIR'S BRIEF

Background

The Convention for the Conservation of Southern Bluefin Tuna came into force on 20 May 1994, and the Convention created the Commission for the Conservation of Southern Bluefin Tuna (CCSBT, www.ccsbt.org). The Commission's objective is to ensure, through appropriate management, the conservation and optimum utilization of the global SBT fishery.

Following endorsement at the Second Regular Session of the Commission, the Memorandum of Understanding with CCSBT was signed by the respective Chairman of both Commissions in early 2006.

7.6 SPRFMO

The Scientific Committee will consider any areas of potential interaction and cooperation with the future proposed new RFMO for straddling fish stocks and discrete high seas fish stocks in the South Pacific Ocean, and provide advice and recommendations, if any, for subsequent consideration by the Commission.

CHAIR'S BRIEF

Background

The South Pacific RFMO negotiations were initiated to address a gap in the international conservation and management of non-highly migratory fish stocks and protect biodiversity in the marine environment in high seas areas of the South Pacific Ocean.

The first international meeting on the establishment of the South Pacific Regional Fisheries Management Organisation took place from 14 - 17 February 2006. While other RFMOs, such as the Western and Central Pacific Fisheries Convention (WCPFC) and the Inter-American Tropical Tuna Convention (IATTC) cover parts of this region, their mandates cover only highly migratory species. Details on the SPRFMO are available at www.southpacificrfmo.org.

7.7 FAO

The Scientific Committee will consider any cooperation with the FAO, in particular becoming a member of the Coordinating Working Party on Fishery Statistics (CWP) and establishing a partnership agreement for the Fishery Resource Monitoring System (FIRMS), and provide advice and recommendations, if any, for subsequent consideration by the Commission.

CHAIR'S BRIEF

Background

CWP

The mission of the Coordinating Working Party on Fishery Statistics (CWP, www.cwpnet.org) is to provide a mechanism to coordinate fishery statistical programmes of regional fishery bodies and other inter-governmental organizations with a remit for fishery statistics.

Since 1960, the CWP's purpose is to:

- continually review fishery statistics requirements for research, policy-making and management;
- agree on standard concepts, definitions, classifications and methodologies for the collection and collation of fishery statistics; and
- make proposals for the coordination and streamlining of statistical activities among relevant intergovernmental organizations.

Current members are CCAMLR, CCSBT, FAO, IATTC, ICCAT, ICES, IOTC, NASCO, NAFO, NEAGC, OECD, EU/Eurostat, SEAFDEC, SPC, and IWC.

FIRMS

FIRMS system is part of the FAO Fisheries Global Information System (FIGIS, a network of integrated fisheries information). Information provided by the partners is organized in a database and published in the form of fact sheets. This system provides the data owner with tools to ensure controlled dissemination of high quality and updated information.

The primary aim of the Fishery Resources Monitoring System (FIRMS) is to provide access to a wide range of high-quality information on the global monitoring and management of fishery marine resources.

FIRMS draws together a unified partnership of international organizations, regional fishery bodies and, in the future, national scientific institutes, collaborating within formal agreement to report and share information on fisheries resources. For effective fisheries information management, FIRMS also participates in the development and promotion of agreed standards.

Discussion

The Summary Record of SC1 at Noumea recorded:

11.1 The Scientific Committee noted a number of areas of FAO's work that may be of relevance to the work of the Scientific Committee and the WCPFC in general. FAO has a wide range of technical expertise (within the Fisheries Department and in its regional and sub-regional offices) that may be of relevance to the work of the Scientific Committee and the SWGs. The Scientific Committee suggested that as time allows in the future, the relationship between the work of FAO and its subsidiary bodies and the Scientific Committee be explored further.

11.2 With respect to active cooperation with FAO, the meeting noted that SPC OFP is already a member of the CWP. Unfortunately, the ST-SWG did not have time to consider the membership of WCPFC in the CWP at this Scientific Committee meeting, although there is no urgency to make any decision since the next meeting of the CWP will not be until 2007 and the Scientific Committee 2006 can therefore discuss and make recommendations regarding this issue.

11.3 In regards to the Commission establishing a formal link with FIGIS/FIRMS it was noted that the Commission would have to finalize its data and information dissemination policy before this could progress. It was noted that the FIRMS/FIGIS project is progressing slowly and there was no urgency in the WCPFC in making any decision regarding the development of a partnership arrangement at this stage, and that

discussion on this issue should be deferred to the next regular session of the Scientific Committee in 2006.

11.4 In relation to participation at upcoming FAO meetings (or other similar related international science meetings of importance to the work of the Scientific Committee), there was some discussion on how the Commission might deal with representation to meetings in general. It was suggested that representation might be covered in any of the following ways:

- a) A member of the Commission, already intending to attend the meeting, might be asked to be the official Scientific Committee representative; or
- b) Funding from the Commission might be provided to a member to serve as the official Commission representative; or
- c) Funding from the Commission might be provided for a Secretariat staff member to serve as the official Commission representative.

The Scientific Committee may consider becoming a member of these bodies.

AGENDA ITEM 8 CONSIDERATION OF THE SPECIAL REQUIREMENTS OF DEVELOPING STATES AND PARTICIPATING TERRITORIES

8.1 Special Requirements Fund

a. Review of 2005/2006 activities

The Scientific Committee will review relevant 2005/2006 intersessional activities for capacity building of developing States and participating territories supported by the Special Requirements Fund.

CHAIR'S BRIEF

Purpose

To support capacity building of developing States and participating territories

Background

At its first session, the Scientific Committee identified ten areas relating to the special requirements of developing state parties and participating territories with respect to data and scientific research. It recommended to the Commission to support workshops, to develop domestic fisheries monitoring system, and to establish scholarship and fellowship programs. It also recommended that the Commission encourage support for contributions to the Special Requirements Fund in response to the above needs, and requested the Executive Director to give the establishment of the Fund, its operating procedures and effective implementation priority (paragraphs 8.4-8.6, SC1 Report).

The Secretariat presented Draft Guidelines for Accessing the SRF to the Second Regular Session of the Commission at Pohnpei in December 2005. To supplement the Draft Guidelines, the Commission was advised that FFA members would prepare a strategy to guide the capacity building work of the Commission for developing States and participating territories to be supported by the Special Requirements Fund (paragraph 84, Commission 2 Report). The Second

Regular Session of the Commission adopted a budget for the special requirement fund as recommended by the Scientific Committee:

Science and data needs to be considered for funding from the special requirements fund			
1	MFCL stock assessment model workshop	40,000	Workshop run by SPC OFP on using and interpreting MFCL for WCP-CA highly migratory stocks
2	Support for observer program training	40,000	Support for SPC based component of regional observer training program with focus on Commission standards and requirements
3	Scholarship scheme (2 per year)	40,000	Two scholarships for tertiary study, with tuition and living allowance @ US\$ 20,000 p.a.
4	Attachments (SPC, FFA) and visiting experts	21,000	National scientists and statistics staff; @ US\$ 3,500 each, covering travel and living costs only, 2-3 week assignments
5	Annual vessel activity report and national vessel register	9,000	Technical support, design of register and database, distribution of forms
	<i>SUB-TOTAL</i>	150,000	

Discussion

The FFA members may report intersessional activities, achievements and any problems to be addressed for future implementation of the special requirements program. The Scientific Committee will review relevant 2005/2006 intersessional activities, address any problems, and make recommendations, if any, for better capacity building of developing states and participating territories in relation to science and data management supported by the Special Requirements Fund.

b. Advice and recommendations to the Commission*

The Scientific Committee will provide advice and recommendations in relation to existing activities and proposed new initiatives for the Special Requirement Fund.

8.2 Other matters

The Scientific Committee will consider any other issues raised by developing states and participating territories.

AGENDA ITEM 9 FUTURE WORK PROGRAM AND BUDGET

9.1 Research plan for Scientific Committee

The Scientific Committee will consider the research plans for the individual SWGs and a draft Research Plan that will outline principles and research direction for the Scientific Committee and its SWGs for the next 3-5 years, and make recommendations, if any, to be considered by the Commission.

CHAIR'S BRIEF

Purpose

To provide the Commission with a draft research plan for the Scientific Committee

Background

Article 12, paragraph 2 (a), of the Convention requires the Scientific Committee to recommend to the Commission a research plan, including specific issues and items to be addressed by the scientific experts or by other organizations or individuals, as appropriate, and identify data needs and coordinate activities that meet those needs.

The development of a 'medium term' research plan, as termed at the first Scientific Committee meeting, is directly relevant to the discussion of research priorities, research planning, and coordination. In relation to this, the Scientific Committee noted that collaborative activities with other RFMOs and organizations such as IATTC and FAO could be developed to assist with implementation of the Research Plan. The Scientific Committee recommended the Secretariat to develop a medium term research plan for the Commission, with annual review by the Scientific Committee, by utilizing research priorities identified, the work programs of the SWGs and the medium term research plans of the SWGs. The draft research plan has been prepared in response to this recommendation (GN WP-4).

The Scientific Committee will review and finalize the Scientific Committee Research Plan, including short, medium and long term priorities, and prepare advice and recommendations, for subsequent consideration by the Commission, relating to its implementation.

9.2 2007 Work Program

The Scientific Committee will adopt a program of work and associated budgetary requirements for the Committee and individual SWGs for 2007 and a provisional work program and budget for 2008. Where possible, the Scientific Committee will assign responsibility for their implementation (including any prioritization required as part of the service agreement between SPC and the Commission) and consider processes for progressing work program items intersessionally.

CHAIR'S BRIEF

Purpose

To provide the Commission with a detailed work program for 2007 including budget implications and an indicative work program and budget for 2008

Background

At its first session, the Scientific Committee produced Table 3 (Draft budget for the Scientific Committee in 2006) in the SC1 Report as a summary work program to be considered and adopted by the Commission. A similar table may be prepared and recommended to the Commission by SC2.

Discussion

The SWG conveners will prepare research priorities of their respective Groups. The Scientific Committee will review those priorities and prepare, for the Commission's deliberation and possible adoption, a consolidated table that will specify priority tasks, an indicative budget for each task and explanatory comments as necessary.

AGENDA ITEM 10 ADMINISTRATIVE MATTERS

10.1 Rules of Procedure

The Scientific Committee will consider and finalize draft Rules of Procedure produced by the small drafting group as agreed at SC-1 (paragraph 10.10 of SC-1 report).

CHAIR'S BRIEF

Purpose

To provide the Commission with a consolidated comments for possible adoption of the revised draft rules of procedure for its subsidiary bodies.

Background

In accordance with Article 9 of the Convention, the Commission will adopt rules of procedure for its subsidiary bodies by consensus. Rule 31 of the Commission's rules of procedure provides that each subsidiary body of the Commission may formulate, and submit to the Commission for approval, such rules as may be necessary for the efficient conduct of its functions.

At its first meeting, the Scientific Committee considered a draft rules tabled by the US, noted seven additional items that would need to be clearly addressed in a revised draft, and agreed a provisional schedule to facilitate further development. The Committee also noted that the rules of procedures of different Commission subsidiary bodies should be as harmonized and simplified as much as possible (paragraphs 10.1-10.10, SC1 Report 2005).

Discussion

The Scientific Committee will review draft rules of procedure for the Commission's subsidiary bodies (GN WP-2). This was initially prepared by the Secretariat in May. The Acting Chair of the Scientific Committee circulated this draft for comment in June and, on the basis of comments received, further refinements to the draft were undertaken. A comparison table between the rules of the Commission and the subsidiary bodies are attached (Attachment 2).

The Technical and Compliance Committee will also review the draft including any comments on the draft provided by the Scientific Committee.

10.2 Independent review of the Commission's science structure and functions

The Scientific Committee will consider draft Terms of Reference for the independent review of the Commission's science structure and function during the 3-5 year transitional period. In addition recommendations will be made on the implementation of the review.

CHAIR'S BRIEF

Purpose

To prepare advice and recommendations for the Commission in relation to the proposed 2007 independent review of it's the Commission's interim science structure and functions.

Background

Refer to GN WP-3.

Discussion

The Scientific Committee will review GN WP-3, especially terms of reference for the proposed independent review of the Commission's science structure and functions and finalize the draft terms of reference.

10.3 Future operation of the Scientific Committee

Based on the experiences of SC-1 and SC-2, the Scientific Committee will consider the future operation of the Scientific Committee including the use of Specialist Working Groups and the reporting of the Scientific Committee meeting.

CHAIR'S BRIEF

Purpose

To consider means to improve the effectiveness and efficiency of future meetings of the Scientific Committee.

Discussion

The Scientific Committee will be invited to review the administration, conduct, program of work, use of resources, and outcomes of the first two meetings of the Scientific Committee and discuss any problems experienced and means to address them to support a more effective and efficient meeting of the Scientific Committee in 2007.. Possible items to be considered are:

- reconsideration on the structure and meeting of the Specialist Working Groups;
- reporting relations and procedures and information flow among relevant subsidiary bodies and other organizations, including SPC, ISC, NC, SC, TCC, and Commission;
- dates for the submissions of papers for the SC meetings; and
- the presentation of National Reports to the Scientific Committee

10.4 2007 provisional budget and 2008 indicative budget for the Scientific Committee *

The Scientific Committee will consider a proposed provisional budget for 2007 and an indicative budget for 2008 for adoption by the Commission.

10.5 Next meeting*

Members are invited to propose next meeting time and venue.

CHAIR'S BRIEF

Issues

The Chair of the Scientific Committee, in consultation with member countries, may have pre-arranged the next meeting time and venue before this agenda is opened for discussion.

AGENDA ITEM 11 OTHER MATTERS

11.1 Commission's publication policy

The Scientific Committee will review a draft publication policy of the Commission and provide advice and recommendations, if any, for its finalisation.

CHAIR'S BRIEF

Background

The Secretariat has prepared document GN WP-5 for the Committee's review.

AGENDA ITEM 12 ADOPTION OF THE REPORT OF THE SECOND SESSION OF THE SCIENTIFIC COMMITTEE

12.1 Adoption of the Summary Report and Executive Summary of the Second Regular Session of the Scientific Committee

The Scientific Committee will adopt the Summary Report of its Second Regular Session and its Executive Summary.

CHAIR'S BRIEF

Background

The Scientific Committee may refer to the CHAIR'S BRIEF under agenda item 1.5.

AGENDA ITEM 13 CLOSE OF MEETING

The meeting is scheduled to close at 1800 h on Friday, 18 August 2006.

IATTC RESOLUTION C-04-07

**RESOLUTION ON A THREE-YEAR PROGRAM TO MITIGATE THE IMPACT OF
TUNA FISHING ON SEA TURTLES**

The Inter-American Tropical Tuna Commission (IATTC):

Considering the possible adverse effects of tuna fishing on the populations of sea turtles in the eastern Pacific Ocean (EPO); and

Further considering the recommendation of the 4th Meeting of the Working Group on Bycatch in January 2004;

Adopts the following program:

**THREE-YEAR PROGRAM TO MITIGATE THE IMPACT OF TUNA FISHING ON SEA
TURTLES**

**A. COLLECTION AND ANALYSIS OF ALL AVAILABLE INFORMATION ON
INTERACTIONS WITH SEA TURTLES**

1. For the purpose of collection of statistically reliable scientific data regarding bycatch of sea turtles from fisheries

- a. Contracting Parties, cooperating non-Parties, fishing entities and regional economic integration organizations (collectively “CPCs”) are encouraged to collect, and provide to the IATTC, all available information on fishery interactions with sea turtles in the eastern Pacific Ocean (EPO), including both incidental and direct catches and other impacts on sea turtle populations.
- b. CPCs should develop other techniques, including electronic and other monitoring devices, to improve the collection of scientific data regarding sea turtle bycatch.

2. High priority of research in coastal habitat areas of sea turtles

Interested CPCs, in cooperation with the IATTC, should assign a high priority to conducting research on the interaction between small-scale artisanal fisheries and bycatch of sea turtles in coastal areas.

3. Review of information and data on sea turtles

CPCs and, as appropriate, the IATTC should review available information and data regarding:

- a. biology of sea turtles, including, but not limited to, behavior, diet selection, migration pattern, and nesting areas and nursery grounds.
- b. all sea turtle conservation efforts undertaken by CPCs and other organizations.

To this end, the IATTC should intensify, as appropriate, cooperation with FAO, other regional fisheries management organizations and organizations for sea turtle conservation.

B. MITIGATION MEASURES FOR REDUCING SEA TURTLE BYCATCH

1. Review of effectiveness of mitigation measures

The Commission should review the effectiveness of the mitigation measures and their impact on catches of both sea turtles and target species.

2. Improvement of fishing gears

CPCs and the IATTC should continue to improve techniques to further reduce sea turtle bycatch, and should expeditiously undertake research to determine the effectiveness of the use of circle hooks and other measures in reducing the incidental catch and mortality of sea turtles, and assess their effects on the catch of target species.

C. INDUSTRY EDUCATION

1. Preparation and distribution of informational materials

CPCs and the IATTC should continue wide distribution of informational materials to fishermen who operate in the EPO to assist them in treating incidentally-caught sea turtles properly to improve their survivability.

2. Convening meetings for fishermen

CPCs and the IATTC should continue and expand organization of seminars for fishermen to enable them to treat incidentally-caught sea turtles properly to improve their survivability.

D. CAPACITY BUILDING IN COASTAL DEVELOPING COUNTRIES

The Commission should establish a voluntary fund to assist coastal developing CPCs in improving conservation of sea turtles.

E. REPORTING

CPCs should report to the IATTC, in a timely manner, as appropriate, information relevant to this program.

Contrast Table between ROPs of the Commission and its Subsidiary bodies

COMMISSION	SUBSIDIARY BODIES	
I. SESSIONS REGULAR AND SPECIAL SESSIONS Rule 1 <i>Holding of regular and special sessions</i>	Rule 1 Regular Sessions	Rule 8 Invited Experts Rule 9 Working Groups, Sub-committees or Task Groups Rule 10 Chairman of Specialist Working Groups, Sub-Committees or Task Groups Rule 11 Meetings of Specialist Working Groups, Sub-Committees or Task Groups
II. AGENDA REGULAR SESSIONS Rule 2 <i>Drawing up of the provisional agenda</i>	Rule 2 Agenda for Regular Sessions	
Rule 3 <i>Supplementary items</i>		
SPECIAL SESSIONS Rule 4 <i>Drawing up of the provisional agenda</i>		
REGULAR AND SPECIAL SESSIONS Rule 5 <i>Adoption of the agenda</i>		
III. REPRESENTATION Rule 6 <i>Representation</i>	Rule 6 Representation	
Rule 7 <i>Official contact</i>	Rule 7 Technical Contact	
IV. OFFICERS Rule 8 <i>Elections</i>	Rule 3 Election of Chair and Vice-Chair	
Rule 9 <i>Functions of the Chairman</i>	Rule 5 Functions of the Chair	
Rule 10 <i>Replacement of the Chairman or Vice-Chairman</i>	Rule 4 Replacement of the Chair or Vice-Chair	
V. SECRETARIAT Rule 11 <i>Duties of the Executive Director</i>		
Rule 12 <i>Duties of the Secretariat</i>		
Rule 13 <i>Report of the Executive Director on the work of the Commission</i>		
VI. CONDUCT OF PLENARY MEETINGS Rule 14 <i>Quorum</i>		
Rule 15 <i>Open and closed meetings</i>		
Rule 16 <i>Speeches</i>		
Rule 17 <i>Statements by the Secretariat</i>		
Rule 18 <i>Points of order</i>		
Rule 19 <i>Procedural motions</i>		
Rule 20 <i>Proposals and amendments</i>		
VII. DECISION-MAKING Rule 21 <i>Voting rights</i>		
Rule 22 <i>Decision-making</i>		

Rule 23 <i>Decisions requiring a consensus</i>		
Rule 24 <i>Method of voting</i>		
Rule 25 <i>Conduct during voting</i>		
Rule 26 <i>Explanation of vote</i>		
Rule 27 <i>Division of proposals and amendments</i>		
Rule 28 <i>Order of voting on amendments</i>		
Rule 29 <i>Order of voting on proposals</i>		
Rule 30 <i>Taking decisions inter-sessionally</i>		
VIII. RULES OF PROCEDURE OF SUBSIDIARY BODIES		
Rule 31 <i>Rules of procedure</i>		
Rule 32 <i>The Northern Committee</i>		
IX. REPORTS OF MEETINGS	Rule 12 Reports of meetings of subsidiary bodies	
Rule 33 <i>Reports of meetings</i>		
X. SUSPENSION OF RIGHTS		
Rule 34 <i>Suspension of the exercise of voting rights</i>		
XI. PARTICIPATION BY TERRITORIES		
Rule 35 <i>Participation by territories</i>		
XII. OBSERVERS		
Rule 36 <i>Observers</i>		
XIII. AMENDMENTS		
Rule 37 <i>Method of amendment</i>		
ANNEX I RULES OF PROCEDURE RELATING TO THE NORTHERN COMMITTEE		
ANNEX II RULES OF PROCEDURE ON THE NATURE AND EXTENT OF PARTICIPATION OF TERRITORIES		