



**SCIENTIFIC COMMITTEE  
THIRD REGULAR SESSION**

13-24 August 2007  
Honolulu, United States of America

---

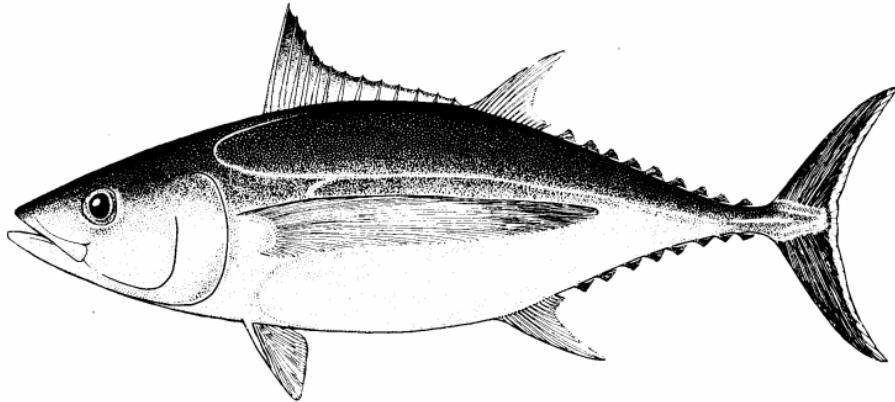
**ANNUAL REPORT – PART 1  
INFORMATION ON FISHERIES, RESEARCH, AND STATISTICS**

---

**WCPFC-SC3-AR PART 1/WP-17**

**REPUBLIC OF NAURU**

# **TUNA FISHERIES IN NAURU**



**OCEANIC DEPARTMENT  
NAURU FISHERIES AND MARINE RESOURCES AUTHORITY  
(*SERVICE DE LA PÊCHE*)**

**NAURU**

**AUGUST 2007**

## 1.1 Annual Fisheries Information

### Introduction

The tuna fisheries in Nauru forms a key component to the economic development of Nauru with the access fees from Foreign fishing licenses contributing a significant component of national GDP. The fisheries development is characterized by a predominant reliance on the access fees from all the major purse seine fleets operating in the WCPO and little onshore development although the latter is an issue that is assuming higher priority with the planned restructuring of the Nauru Fisheries Trading Corporation.

The Nauru Exclusive Economic Zone continues to provide a rich ground for the Purse Seine fleets of the Fishing Partner members of the WCPFC with initial catch data for 2006 proving to be a relatively high level of catch.

### Fleet Structure

#### Domestic fleet

The two longliners operated by the Nauru Fisheries Trading Corporation are still out of commission pending the business restructuring of the latter. Therefore there is no recent catch data beyond those presented at SC2 (Attachment A)

#### Fishing Partner Purse seine fleets:

In 2006 there were 112 foreign purse fleets licensed to operate in Nauru. In support of some of these purse seine fleets, Nauru licensed an additional 6 Bunker vessels. The following table gives a breakdown of the fleets by country and by size according to the size categories. The majority of the purse seine vessels fall within the 1001 -1500 GRT category (67) followed by the smaller 501 to 1000 size group and only 7 vessels fitting in the superseiner category of over 1500 GRT.

**Table.1 Foreign Fishing Vessels Licensed to Nauru in 2006**

| Flag      | No of vessels | Gear   | 0-500Grt | 501-1000Grt | 1001-1500Grt | 1500Grt+ |
|-----------|---------------|--------|----------|-------------|--------------|----------|
| Japan     | 33            | PS     | 0        | 1           | 31           | 1        |
| Korea     | 27            | PS     | 0        | 14          | 11           | 2        |
| Korea     | 4             | Bunker | 0        | 0           | 0            | 4        |
| Chinese T | 33            | PS     | 0        | 16          | 15           | 2        |
| US        | 9             | PS     | 0        | 2           | 6            | 1        |
| China     | 10            | PS     | 0        | 5           | 4            | 1        |
| Singapore | 2             | Bunker | 0        | 0           | 0            | 2        |

### Annual Catches of foreign fleets

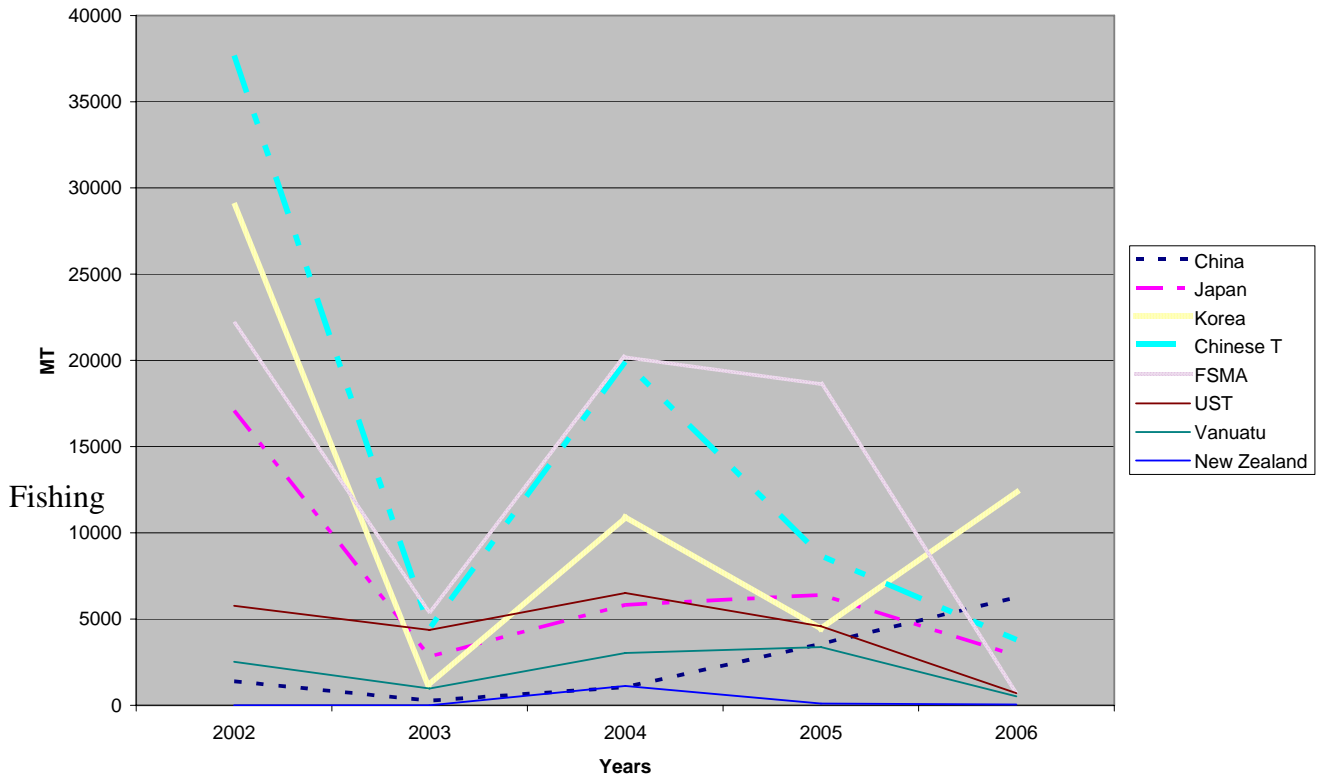
Table 2 shows the catch data from 2002 to 2006 (up to June 06) for the purse seine fleet operating in Nauru (Annual Catches by foreign purse seine fleets in the Nauru EEZ, by flag and species, 2002-2005. (Source: Unraised logsheet data collected held in the Regional Tuna Fisheries Database, SPC; catches for 2006 may be incomplete)

**Table 2. catch data from 2002 to 2006 (up to June 06) for the purse seine fleet operating in Nauru.**

| Fleet     | Year | CATCH (Metric tones) |       |     |     |         |
|-----------|------|----------------------|-------|-----|-----|---------|
|           |      | SKJ                  | YFT   | BET | OTH | TOTAL   |
| CN        | 2002 | 1,215                | 256   | 0   | 0   | 1,471   |
|           | 2003 | 155                  | 20    | 0   | 0   | 175     |
|           | 2004 | 548                  | 8     | 0   | 0   | 556     |
|           | 2005 | 1,798                | 358   | 0   | 2   | 2,158   |
|           | 2006 | 2,360                | 30    | 0   | 0   | 2,390   |
| FA        | 2002 | 20,351               | 1,508 | 68  | 0   | 21,926  |
|           | 2003 | 4,679                | 782   | 5   | 0   | 5,466   |
|           | 2004 | 17,332               | 749   | 394 | 7   | 18,481  |
|           | 2005 | 14,927               | 2,440 | 551 | 5   | 17,923  |
|           | 2006 | 9,918                | 850   | 106 | 67  | 10,941  |
| JP        | 2002 | 15,144               | 1,824 | 37  | 461 | 17,466  |
|           | 2003 | 2,137                | 720   | 21  | 162 | 3,040   |
|           | 2004 | 5,218                | 618   | 3   | 105 | 5,944   |
|           | 2005 | 5,436                | 894   | 47  | 175 | 6,552   |
|           | 2006 | 3,495                | 776   | 46  | 112 | 4,429   |
| KR        | 2002 | 26,510               | 2,205 | 75  | 0   | 28,790  |
|           | 2003 | 720                  | 155   | 10  | 0   | 885     |
|           | 2004 | 9,405                | 609   | 6   | 0   | 10,020  |
|           | 2005 | 2,800                | 1,215 | 0   | 0   | 4,015   |
|           | 2006 | 12,200               | 2,520 | 20  | 0   | 14,740  |
| NZ        | 2002 | 0                    | 0     | 0   | 0   | 0       |
|           | 2003 | 7                    | 5     | 0   | 0   | 12      |
|           | 2004 | 1,107                | 161   | 0   | 0   | 1,268   |
|           | 2005 | 841                  | 9     | 0   | 0   | 850     |
|           | 2006 | 53                   | 28    | 18  | 0   | 99      |
| TW        | 2002 | 35,240               | 2,796 | 248 | 0   | 38,284  |
|           | 2003 | 3,730                | 902   | 65  | 0   | 4,697   |
|           | 2004 | 19,085               | 1,219 | 33  | 5   | 20,342  |
|           | 2005 | 8,030                | 896   | 54  | 1   | 8,980   |
|           | 2006 | 12,258               | 1,113 | 31  | 0   | 13,401  |
| US        | 2002 | 4,101                | 1,316 | 10  | 0   | 5,426   |
|           | 2003 | 3,653                | 703   | 71  | 0   | 4,427   |
|           | 2004 | 6,143                | 814   | 59  | 0   | 7,016   |
|           | 2005 | 3,965                | 1,075 | 48  | 5   | 5,093   |
|           | 2006 | 709                  | 560   | 5   | 0   | 1,274   |
| VU        | 2002 | 2,445                | 35    | 0   | 0   | 2,480   |
|           | 2003 | 925                  | 10    | 0   | 0   | 935     |
|           | 2004 | 2,605                | 335   | 10  | 1   | 2,951   |
|           | 2005 | 3,319                | 150   | 0   | 1   | 3,470   |
|           | 2006 | 1,185                | 210   | 0   | 0   | 1,395   |
| Total EEZ | 2002 | 105,005              | 9,939 | 438 | 461 | 115,844 |
|           | 2003 | 16,007               | 3,297 | 172 | 162 | 19,637  |
|           | 2004 | 61,443               | 4,513 | 505 | 118 | 66,578  |
|           | 2005 | 41,116               | 7,036 | 700 | 188 | 49,040  |
|           | 2006 | 42,177               | 6,087 | 226 | 179 | 48,669  |

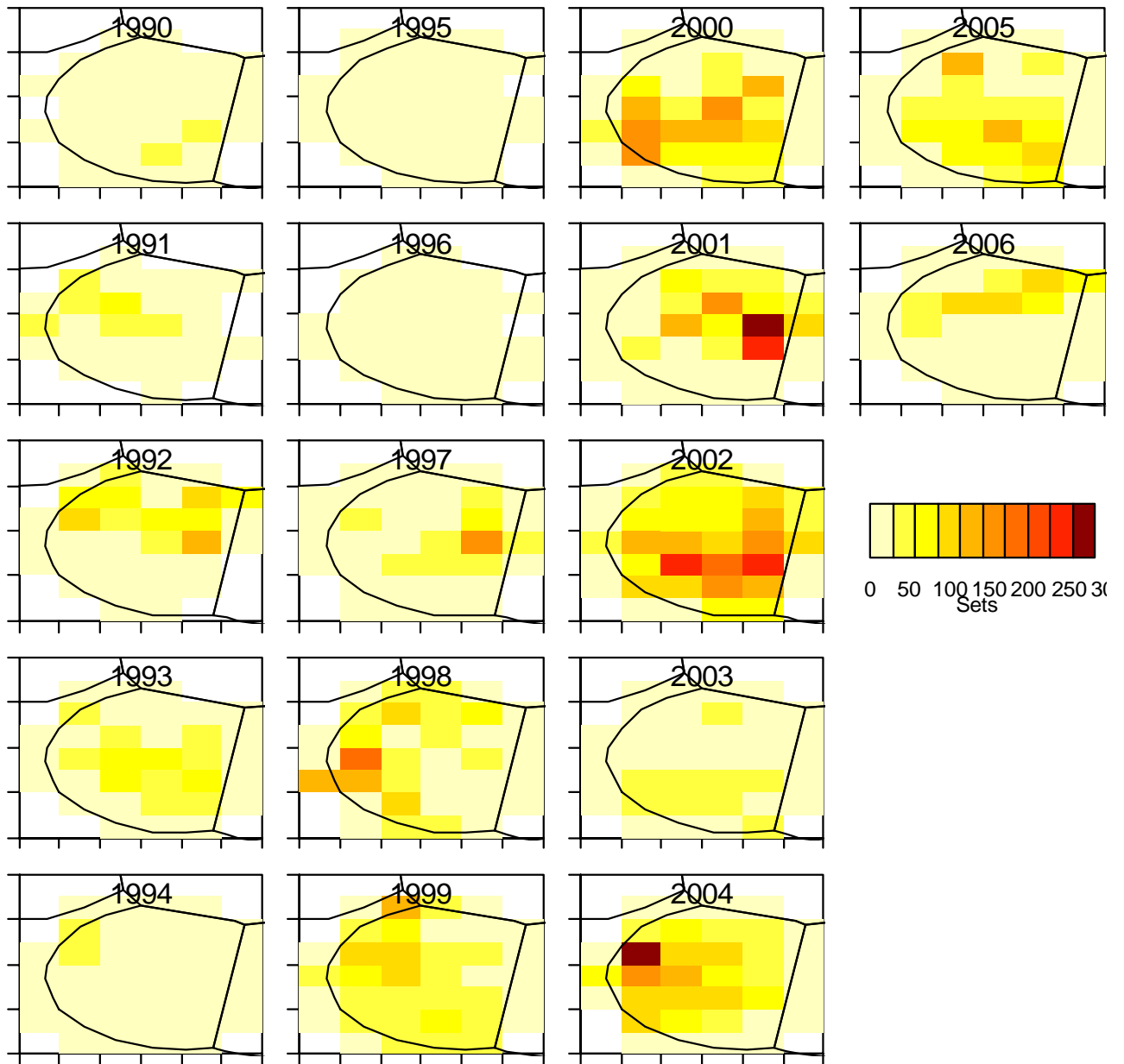
It is noted that the total annual catch for 2002 was the highest on record at around 120,000mt which correlates with the reported ENSO conditions at the time. The level of catches by fleet tend to match the level of effort and the Chinese Taipei fleet has had the most significant catches in Nauru although the general trend has been a consistent level of catches since the peak of 2002 levels.

**Total Annual catches 2002-06**



**Patterns (Catch by time/area)**

The charts below shows the annual fishing patterns of all the foreign purse fleets in the Nauru EEZ from 1990 to 2006 depicted by the number of sets i.e. the level of effort in area matched by the different gradient in shading; the lighter shades representing lower effort and the darker shades for higher effort. In the years of high fishing effort it can be seen that those effort are concentrated between the latitudes of 1N and 3S.



(Source: SPC NTSFR Draft report for Nauru 2007 based on unraised logsheet data; catches for 2006 are incomplete)

## 1.2 Research and Statistics:

The nature of the commercial fishery in Nauru does not provide for an ideal environment for data and other statistical collection. It is a fishery that focuses on the licensing of offshore fishing operations, namely Purse seining, and which very rarely calls into port for transshipment operations given the lack of essential port facilities. Thus any data collection that the Authority undertakes is limited to the collection and collation of Catch

Report Forms from the fishing vessels after they have completed their trips. The Log sheets are entered into a database and then forwarded to the Oceanic Fisheries Program at SPC.

Likewise Nauru's is also limited with its observer program to the Regional Observer programs under the US Treaty and FSM Arrangement. There are provisions in the fishing agreements for Observers to be placed on Bilaterally licensed fishing vessels however given the lack of port facilities and the small size of the EEZ, the logistics of placing national observers make the exercise impractical.

There are recent initiatives to improve on the existing conditions and the Nauru Fisheries and Marine Resources Authority has received the support of SPC this year to conduct a National Tuna Fishery Status report to provide a thorough review of Nauru's fishery statistics, trends and status that will provide better catch estimates and advise regarding environmental/climatic impacts, fishery potential, bycatch and threatened species interactions and other factors identified for investigation by the NFMRA. The project has already commenced with an attachment by one of NFMRA officer at the SPC to work on the draft report in June this year. During the attachment some training was also provided to the officer on fisheries data collection process and the TUFMAN database system.

**Attachment A**

**Domestic Longline Catches (kg) by species 2003-2005:**

| <b>Year</b>  | <b>BET</b>   | <b>YFT</b>     | <b>SKJ</b>        | <b>Albacore</b>  | <b>Blk Marlin</b> | <b>Barracuda</b>   | <b>Swordfish</b> | <b>Wahoo</b> | <b>Sailfish</b> |
|--------------|--------------|----------------|-------------------|------------------|-------------------|--------------------|------------------|--------------|-----------------|
| 2003         | 8898         | 4839           | 2301              | 1489             | 119               | 107                | 239              | 112          | 265             |
| 2004         | 415          | 634            | n/a               | 9                | 40                |                    | n/a              | n/a          | 38              |
| 2005         | 315          | 315            | n/a               | n/a              | n/a               |                    | n/a              | n/a          | 60              |
| <b>Total</b> | <b>9628</b>  | <b>5788</b>    | <b>2301</b>       | <b>1498</b>      | <b>159</b>        |                    | <b>239</b>       | <b>112</b>   | <b>363</b>      |
|              |              |                |                   |                  |                   |                    |                  |              |                 |
| <b>Year</b>  | <b>Shark</b> | <b>Oilfish</b> | <b>rudderfish</b> | <b>Broadbill</b> | <b>Moonfish</b>   | <b>Blue marlin</b> | <b>Mahi-mahi</b> |              |                 |
| 2003         | 497          | 56             | 63                | 196              | 44                | 465                | 36               |              |                 |
| 2004         | 54           | n/a            | n/a               | 230              | n/a               | n/a                | 20               |              |                 |
| 2005         | n/a          | n/a            | n/a               | 131              | n/a               | n/a                | n/a              |              |                 |
| <b>Total</b> | <b>551</b>   | <b>56</b>      | <b>63</b>         | <b>557</b>       | <b>44</b>         | <b>465</b>         | <b>56</b>        |              |                 |