

# SPG + Australia Proposal for a Management Procedure for South Pacific Albacore in the Western and Central Pacific Fisheries Convention Area

Delegation paper DP11

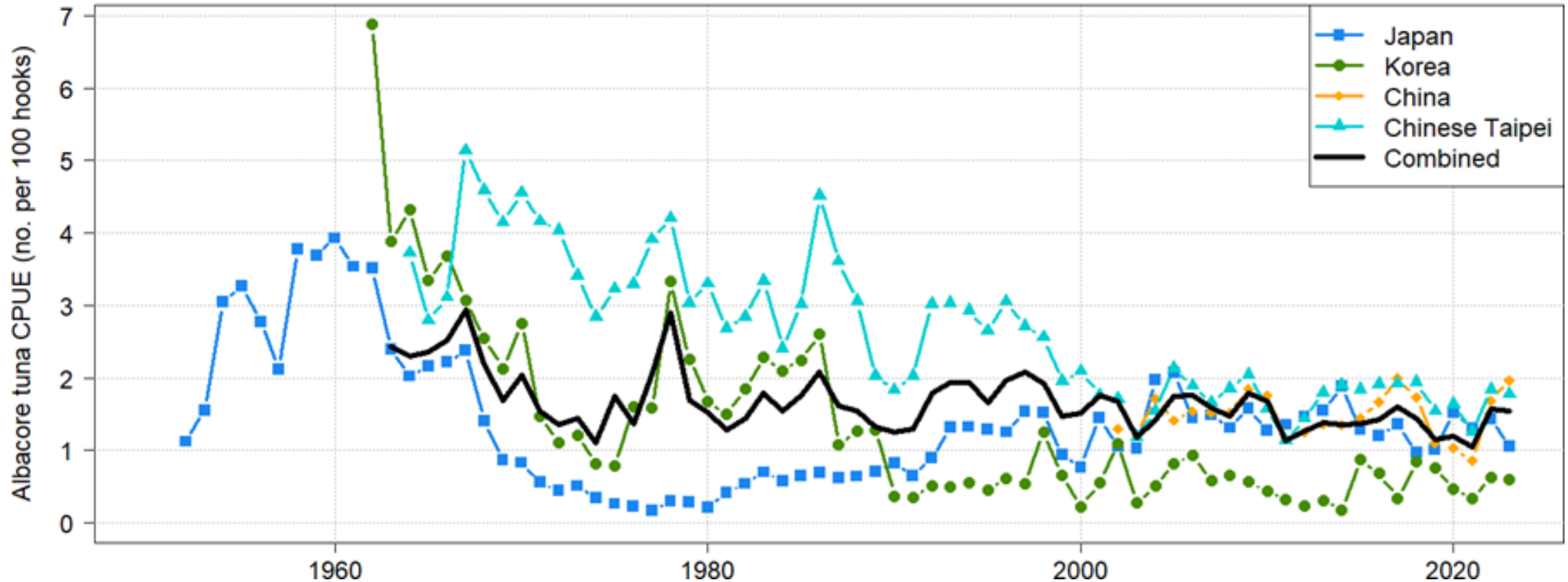
WCPFC21

Suva, Fiji



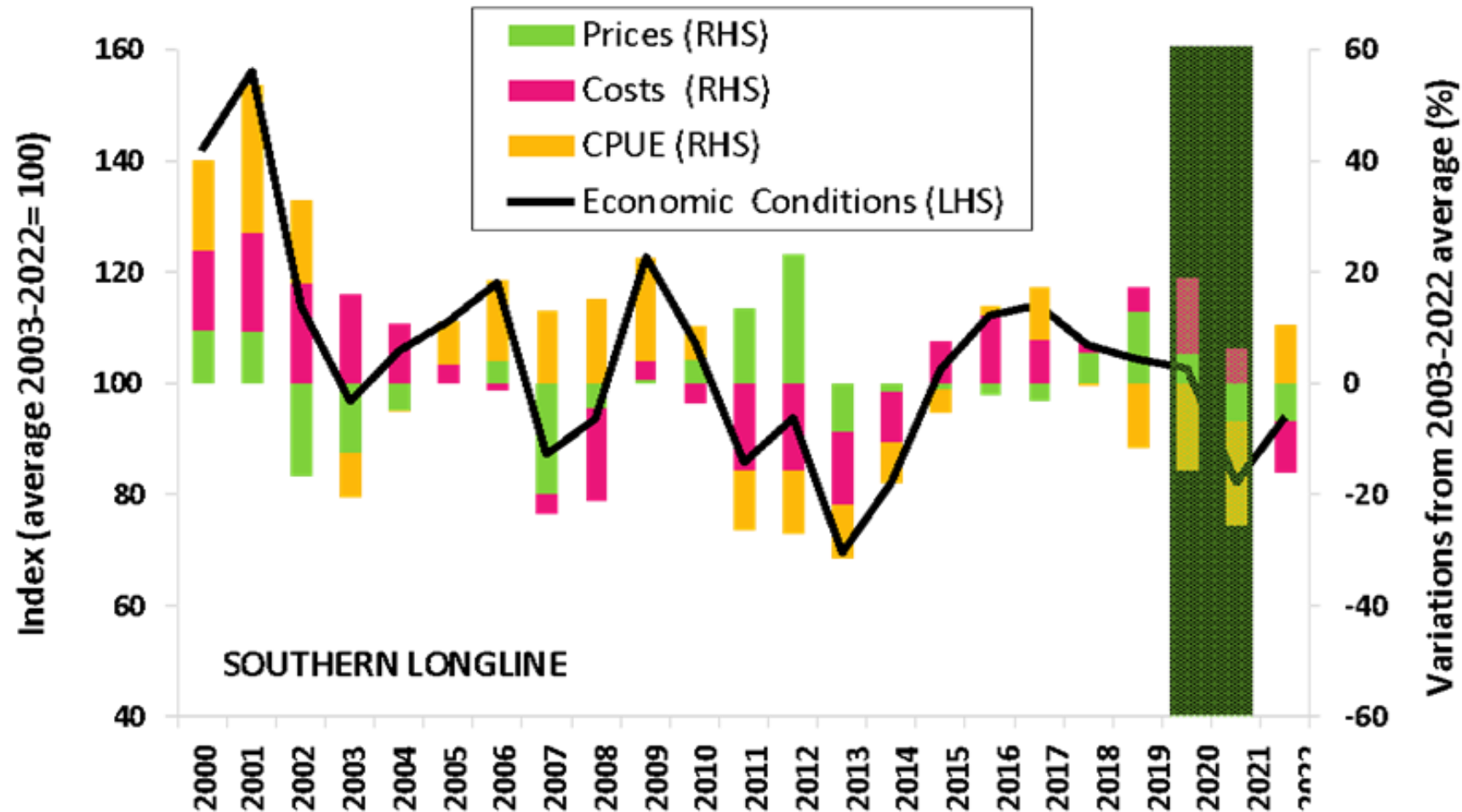
# Background: CPUE

Longline (1952-2023)



SC20-SA-WP-07 (Figure 10): South Pacific albacore tuna catch per unit effort in the southern WCPFC-CA (south of 10°S) by year for major longline fleets.

# Background: Economics





# CMM Structure (see DP11)

- Objective
- Reference Points
- Scope and design of the MP
- Elements of the MP
- Schedule and Roles
- Management Strategy Evaluation
- Review and Final Provisions

## Annexes:

- Harvest Control Rule and Estimator
- Monitoring strategy (initial high level)
- Exceptional Circumstances

# Objectives and Reference Points

## Objective:

- *Achieve the TRP on average;*
  - *Avoid the LRP with a high probability (risk no greater than 20 percent);*
- with a view to maintaining the economic performance of dependant fisheries together with reasonable levels of total catch and catch rates, in a manner that achieves relative stability in fishing levels between management periods.*

## Reference points:

- $TRP = 0.96 SB_{2017-2019} / SB_{F=0}$  (estimated at 50% depletion)
- $LRP = 0.2 SB_{F=0}$  (no change)



# Scope

- All commercial fisheries (longline and troll) south of the equator.
- MP will determine the total annual albacore catch for a 3-year management period.
- A separate CMM will set out the implementation and management arrangements for the SPA MP, which may include a range of control mechanisms (See DP12 for a draft outline provided by SPG).



# Evaluating alternative MPs

- HCR1 achieves a target depletion of 50% ( $0.50 \text{ SB/SB}_{F=0}$ )
  - HCR2 achieves a target depletion of 42% ( $0.42 \text{ SB/SB}_{F=0}$ )
  - HCR3 achieves a target depletion of 56% ( $0.56 \text{ SB/SB}_{F=0}$ )
- 
- HCR2 did not meet the stated Management Objective of “*maintaining the economic performance of dependant fisheries*” with a large decline in catch rates.

# Evaluating alternative MPs (cont.)

- HCR3 produces the highest catch rates (vulnerable biomass) but would require large and excessive cuts to catch levels. So inconsistent with the stated objective requiring “reasonable levels of total catch”.
- HCR1 regarded as the best and most realistic option that doesn’t require catch cuts and still has acceptable levels of vulnerable biomass and catch stability.
- Proposed to include maximum change rule of +10%/-5% which results in slightly higher average catch level but no additional LRP risk.



# Schedule and roles (cont.)

- CMM contains a detailed, year-by-year schedule of actions for the running of the MP.
- Clearly identifies roles and responsibilities.

Year	Scientific Services Provider	Scientific Committee	Commission
2025	- Run the MP (using data to 2023). - Support SC and Commission consideration of the MP.	- Provide advice to the Commission on the MP outputs for the period 2026-2028.	- Develop/Review the SPA Management Arrangements CMM for 2026-2028, taking into account the output of the MP.
2026		- Monitor performance of the MP.	- Apply the SPA Management Arrangements CMM.
2027	- Perform full stock assessment ( $y_{last} = 2025$ ).	- Monitor and review the performance of the MP, including potential exceptional circumstances, and advise Commission.	- Apply the SPA Management Arrangements CMM. - Review the performance and use of the MP.
2028	-Run the MP (using data to 2026). -Support SC and Commission consideration of the MP.	-Monitor the performance of the MP. -Provide advice to Commission on the MP outputs for the next management period (2029-2031).	- Review and revise the SPA Management Arrangements CMM for 2029-2031, taking into account the output of the MP.
2029		- Monitor performance of the MP.	- Apply the SPA Management Arrangements CMM.
2030	- Perform full stock assessment ( $y_{last} = 2028$ ).	- Monitor and review the performance of the MP, including potential exceptional circumstances, and advise Commission.	- Apply the SPA Management Arrangements CMM. -Review the performance and use of the MP.
2031	- Run the MP (using data to 2029). - Support SC and Commission consideration of the MP.	- Monitor the performance of the MP. - Provide advice to Commission on the MP outputs for the next management period (2032-2034).	- Review and revise the SPA Management Arrangements CMM for 2032-2034, taking into account the output of the MP.
etc			

# MP for South Pacific Albacore

- WCPFC21 is invited to consider the proposed management procedure for South Pacific Albacore (DP11)
- We look forward to continuing discussions in the margins to fully understand positions , potential issues and solutions with a view to further progressing this measure
- We invite some questions now and encourage additional questions to be directed to the emails of the SPG Chair and Technical Adviser. Email details are in the proposal.