



Pacific Marine Specimen Bank (Project 35b)

WCPFC-SC20 2024

Fisheries and Ecosystem Monitoring and Analysis

SPC - OFP

Activities

SC20-RP-P35b-01 and SC20-RP-P35b-02

- SAMPLING

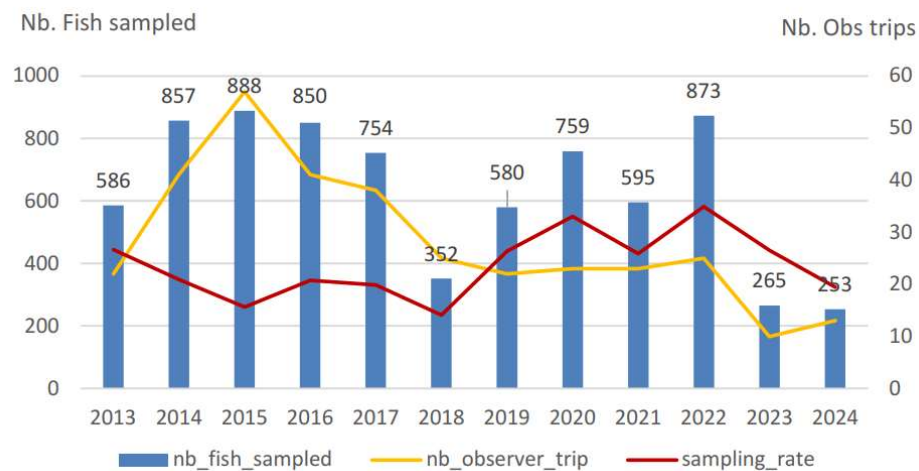
July 2023-June 2024

~48,000 biological samples from
~16,700 individual animal specimens

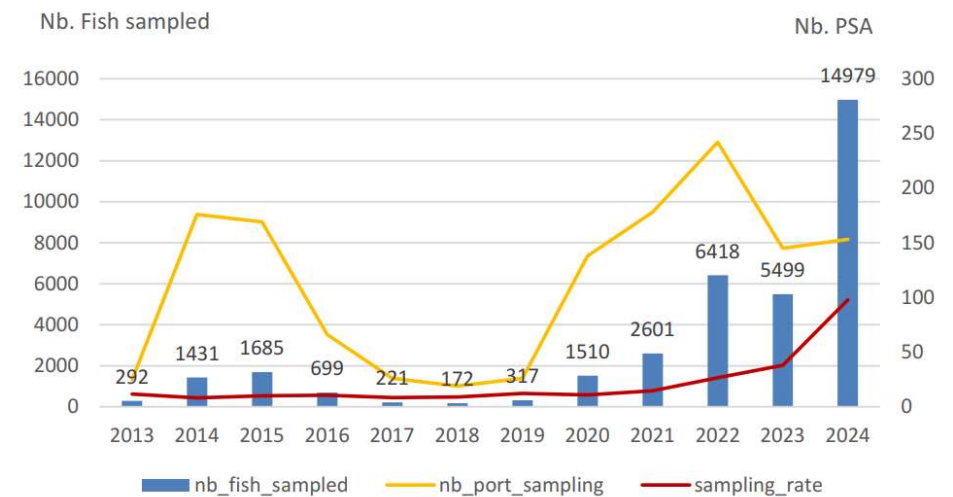
Since 2001

~273,100 biological samples from
~101,000 individual animal specimens

Observer sampling



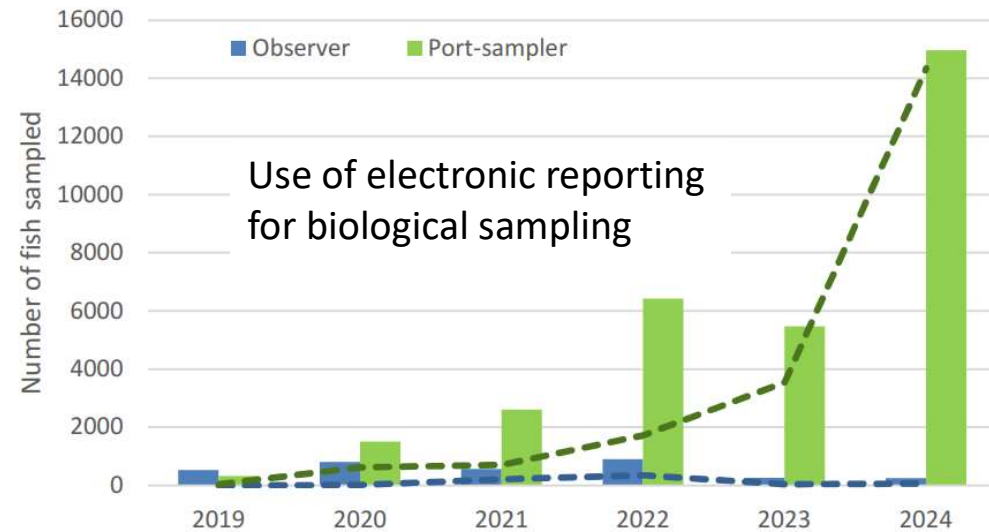
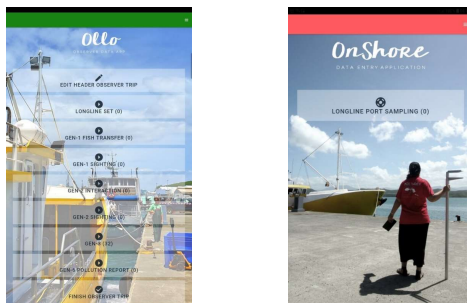
Port sampling



Activities

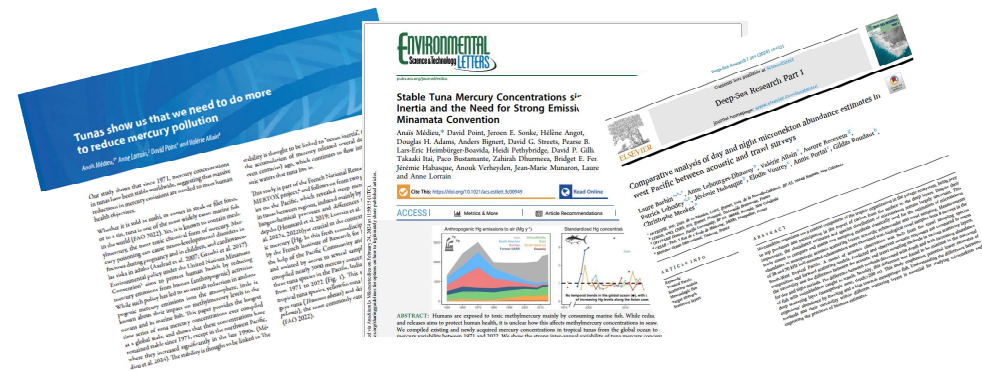
- TRAINING
3 countries, 55 trainees

- ELECTRONIC REPORTING



- PMSB ACCESS AND OUTPUTS
 - 42 projects using samples
 - 9 articles published in Jul 2023-Jun 2024

<https://www.spc.int/ofp/PacificSpecimenBank>



Workplan and budget

- Continue to document standard operating procedures for the PMSB
- Continue improving training materials for biological sampling
- Continue the development and enhancement of electronic recording ER apps and trainings
- Continue the development of a WCPO-wide sampler network for the collection of tuna genetics samples
- Completion of the construction of the wet laboratory extension and renovation of the taxonomy laboratory in Noumea
- Transfer of Biodasys (PMSB database) to a web-based technology
- Quality management system implementation based on ISO9001 standard
- Improve the reporting of PMSB activities through PMSB website
- Encourage the use of electronic reporting ER for biological sampling data collection

2024 budget: USD 107,373

Proposed 2025 budget: USD 109,520

Indicative 2026 budget: USD 111,711

Recommendations

- We invite SC20 to:
 - Continue to support initiatives to increase rates of observer biological sampling, noting that this contribution is essential to the ongoing success of the WCPFC's work
 - Incorporate the identified budget into the 2025 budget and the 2026 indicative budget, as development of the WCPFC PMSB is intended to be ongoing and is considered essential
 - Endorse change for Project 35b to report on the 12 months of the civil year (Jan-Dec) preceding SC, instead of reporting on the 12 months before SC (July-June) which would allow the provision of better-quality data in the SC report
 - Endorse that the workplan in section 4 of the report be pursued by the scientific services provider, in addition to standard duties associated with maintenance and operation of the WCPFC PMSB in 2024-2025