



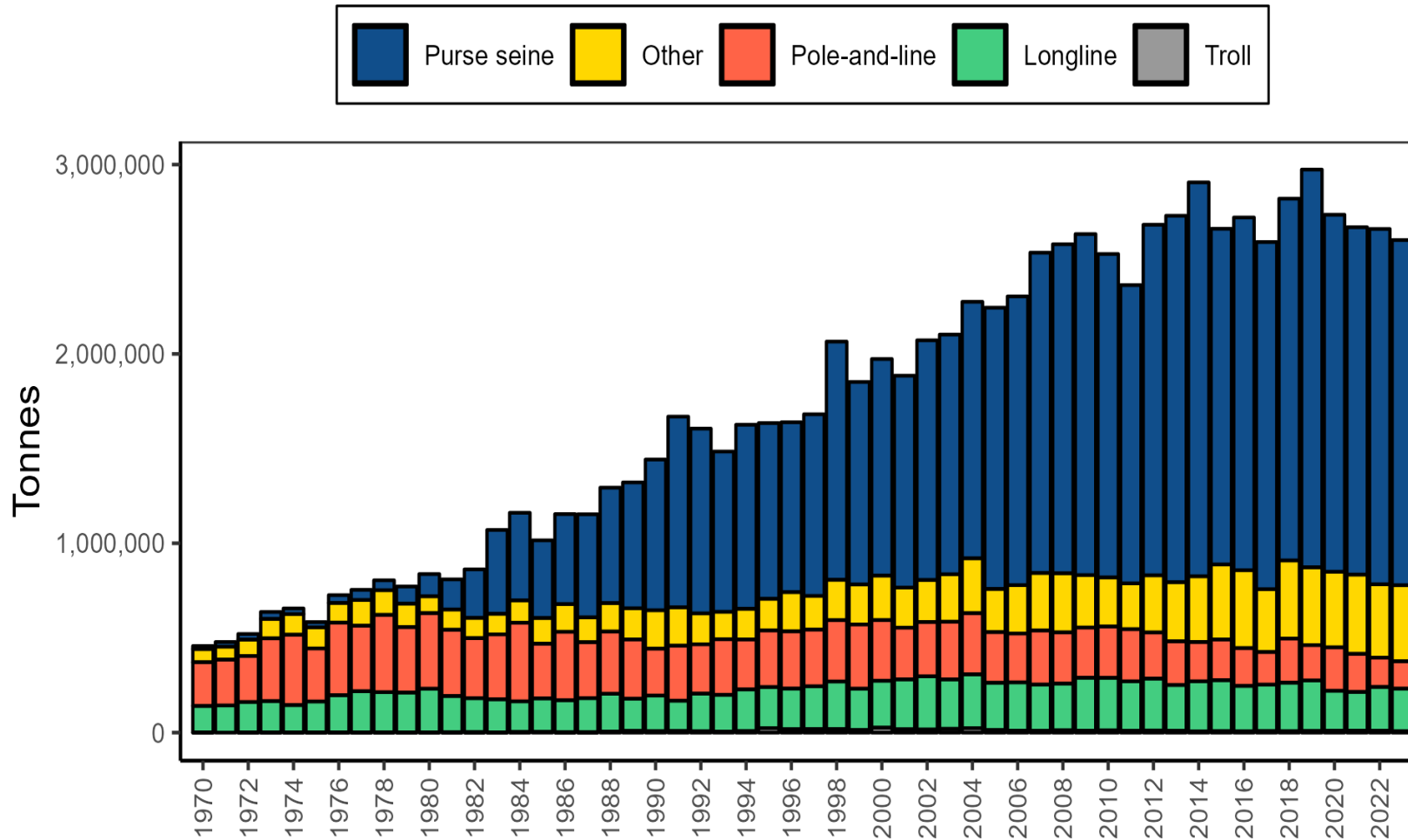
# Overview of tuna fisheries in the Western and Central Pacific Ocean, including economic conditions – 2023

SC20-2024 GN-WP-01

Tiffany Vidal, Peter Williams, Thomas Ruaia

**20<sup>th</sup> Regular Session of the Scientific Committee (SC 20)**  
**Manila, Philippines**

# WCPFC Catch by Gear

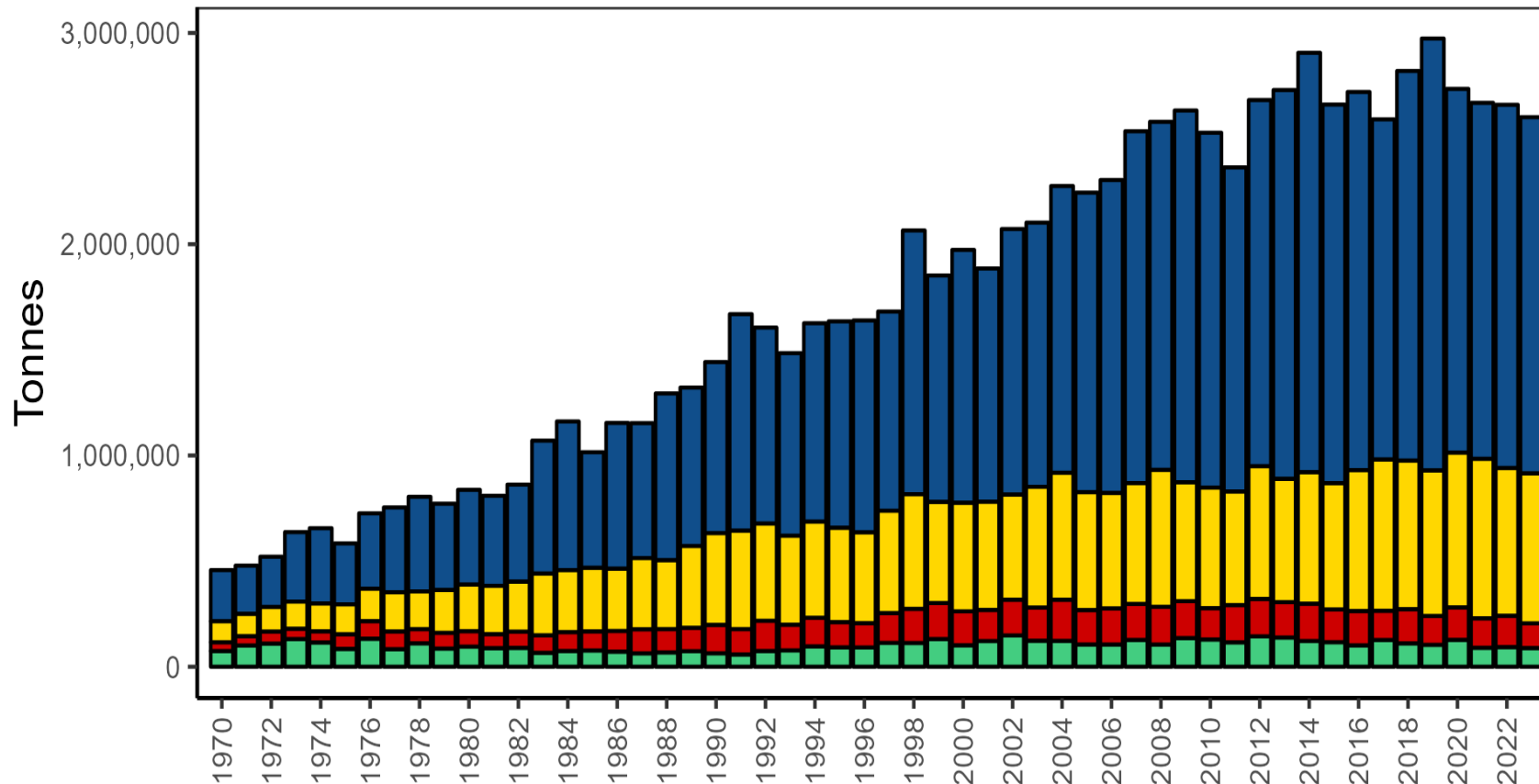


## 2023 Provisional Estimates

- Total Catch: 2.6 mill mt
- Purse seine: 1.8 mill mt (70%)
- Longline: 234K mt (9%)
- Pole-and-line: 143K mt (5%)
- Other: mostly artisanal gears from Indonesia, Vietnam, and Philippines (16%)

**~52% of the global tuna catch**  
**~79% of the Pacific Ocean tuna catch**  
**~80% of WCPFC catch comes from coastal state waters**

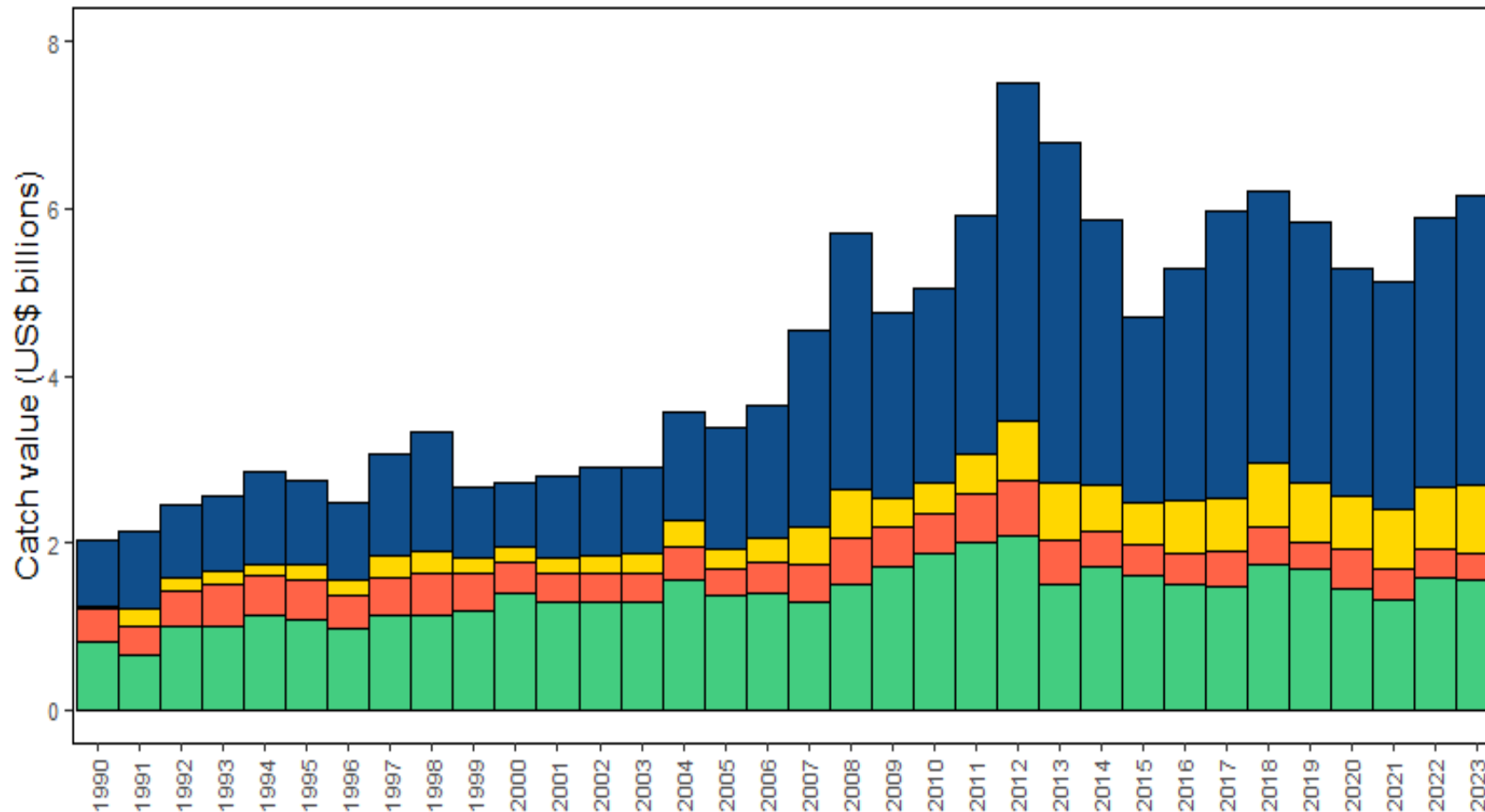
# WCPFC Catch by Species



## 2023 Provisional Estimates

- SKJ: 1.65 mill mt (63%)
- YFT: 747K mt (28%)
- BET: 140K mt (5%)
- ALB: 94K mt (4%)

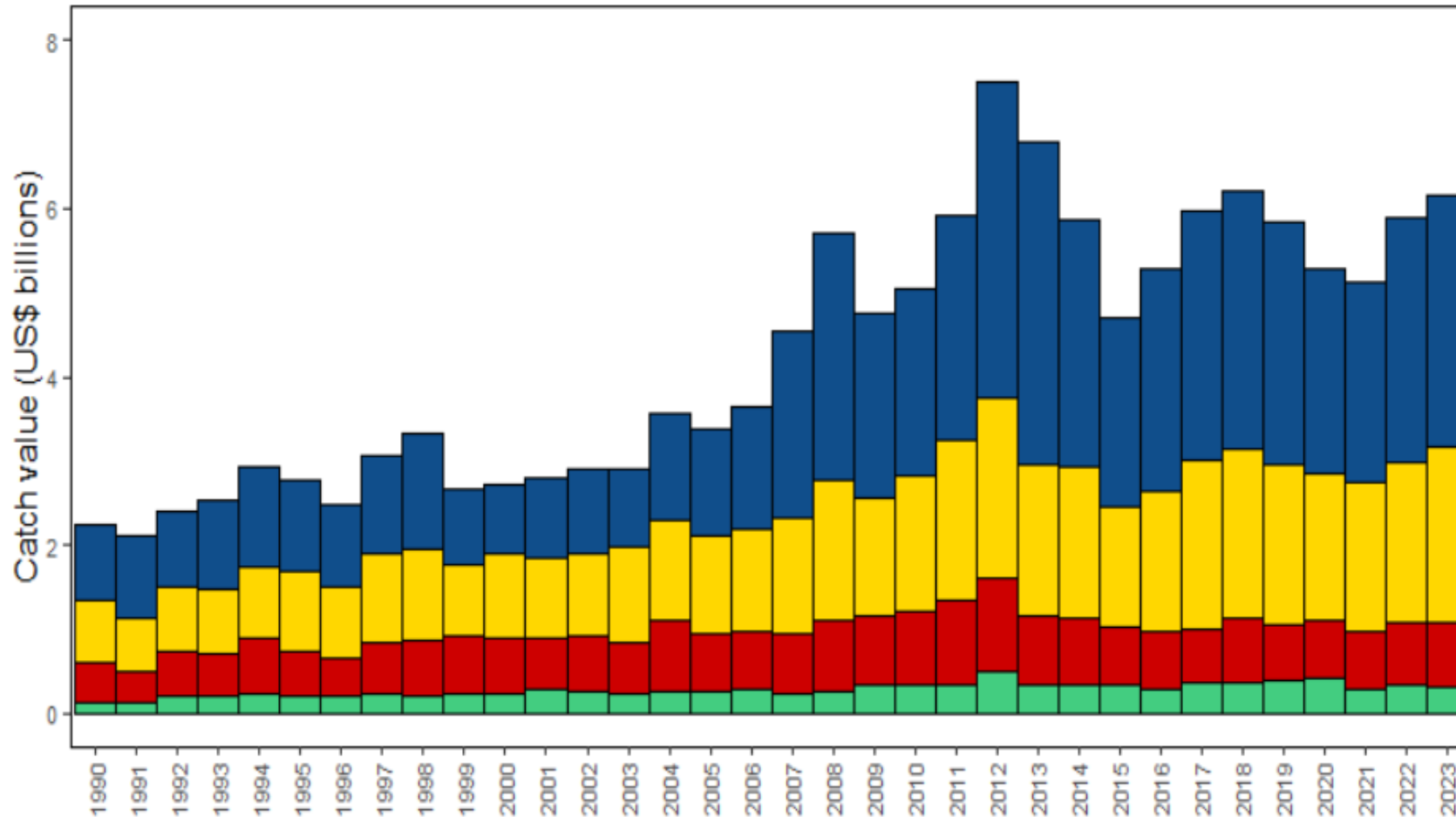
# WCPFC Tuna Catch Value by Gear



## 2023 Estimates (billions)

- Total Catch: \$6.15 (+4%)
- Purse seine: \$3.46 (+7%) – 56% value
- Longline: \$1.55 (-1%) – 25% value
- Pole-and-line: \$0.31 (-11%) – 5% value
- Other: \$0.82 (+11%) – 13% value

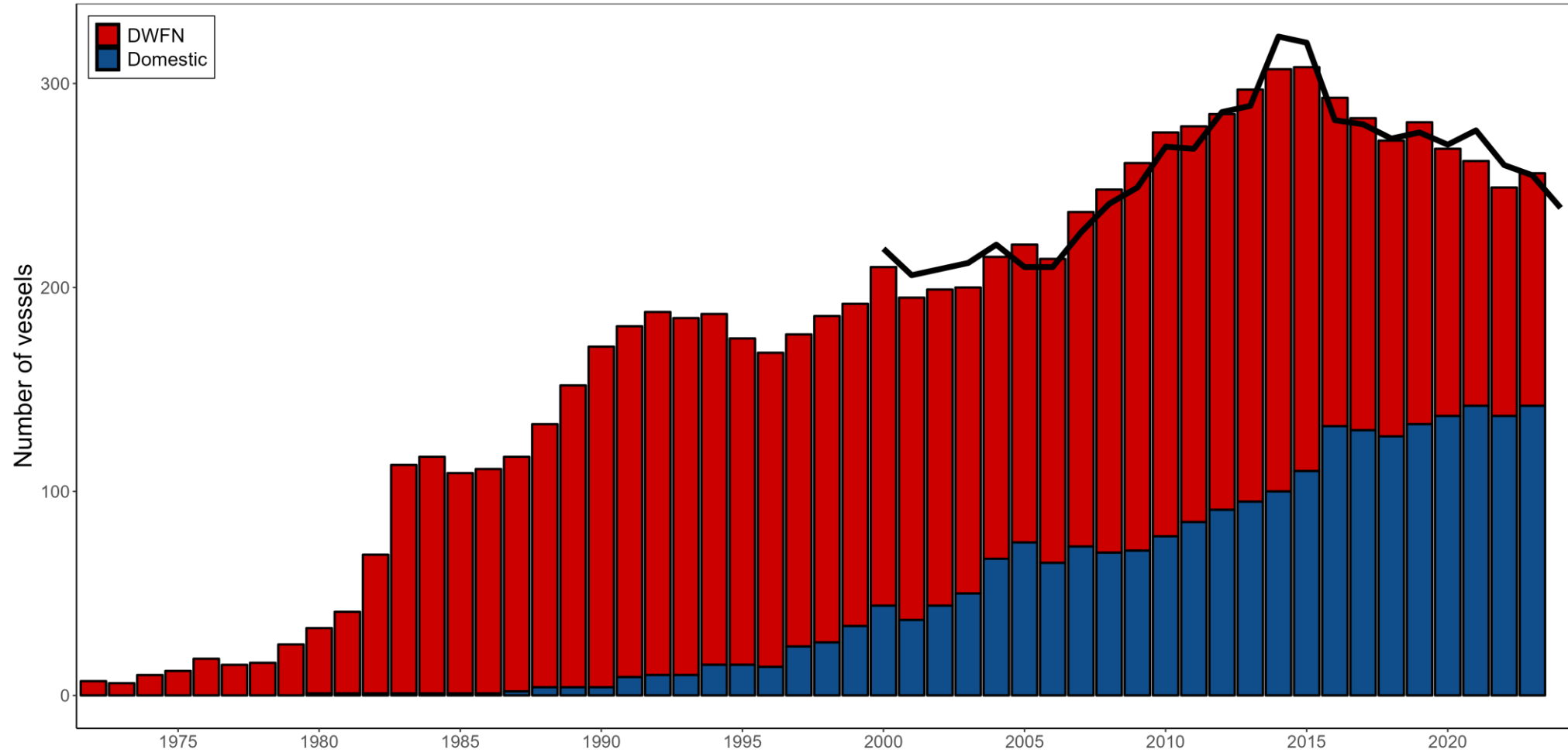
# WCPFC Tuna Catch Value by Species



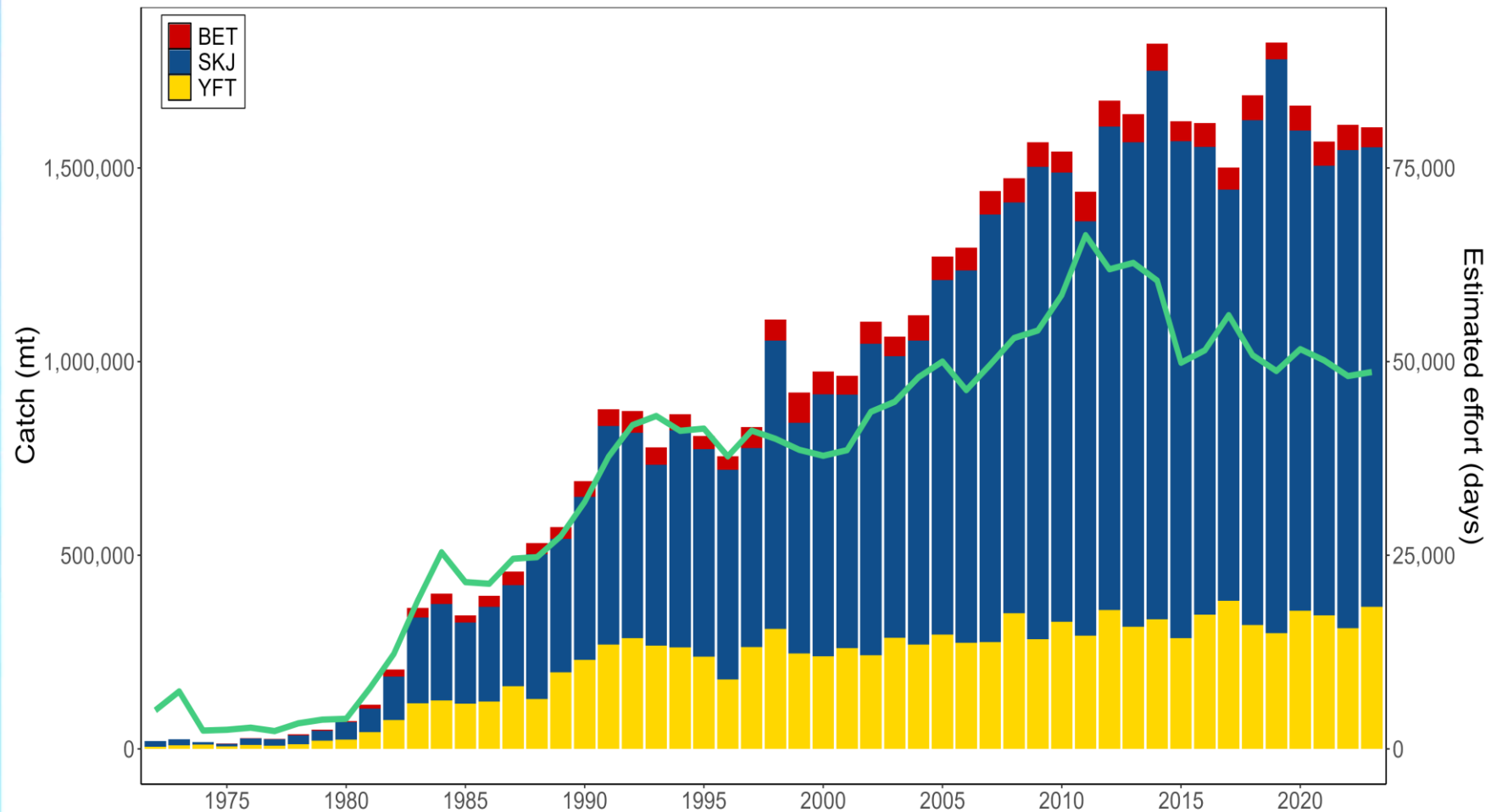
## 2023 Estimates (billions)

- SKJ: \$2.98 (+2%) – 49% value
- YFT: \$2.07 (+10%) – 34% value
- BET: \$0.78 (+4%) – 13% value
- ALB: \$0.30 (-9%) – 5% value

# WCPFC Purse Seine Fishery



# WCPFC Purse Seine Fishery



## 2023 Provisional Estimates

- SKJ: 1.4 mill mt (75%)
- YFT: 408K mt (22%)
- BET: 56K mt (3%)

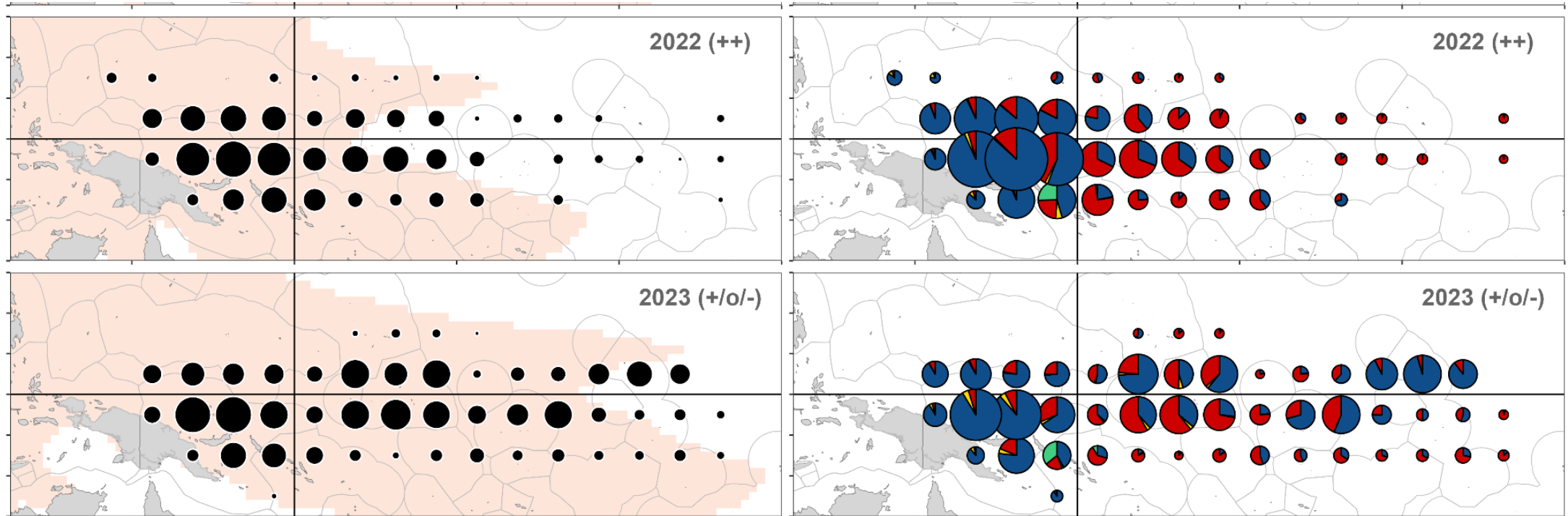
# WCPFC Purse Seine Fishery



Pacific Community  
Communauté du Pacifique

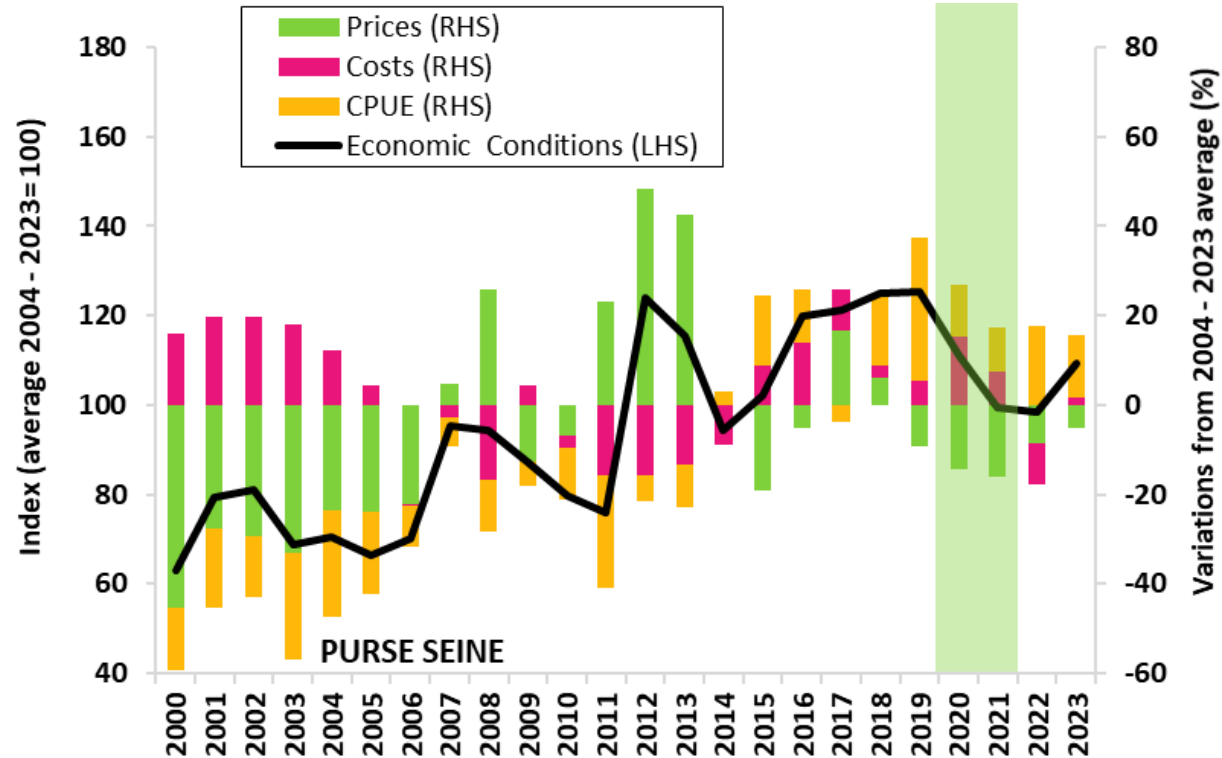
## Days

## Sets





# Purse Seine – Economic Conditions



In 2023, economic conditions is above average driven by an increase in fish prices, declining fuel costs and high CPUE.

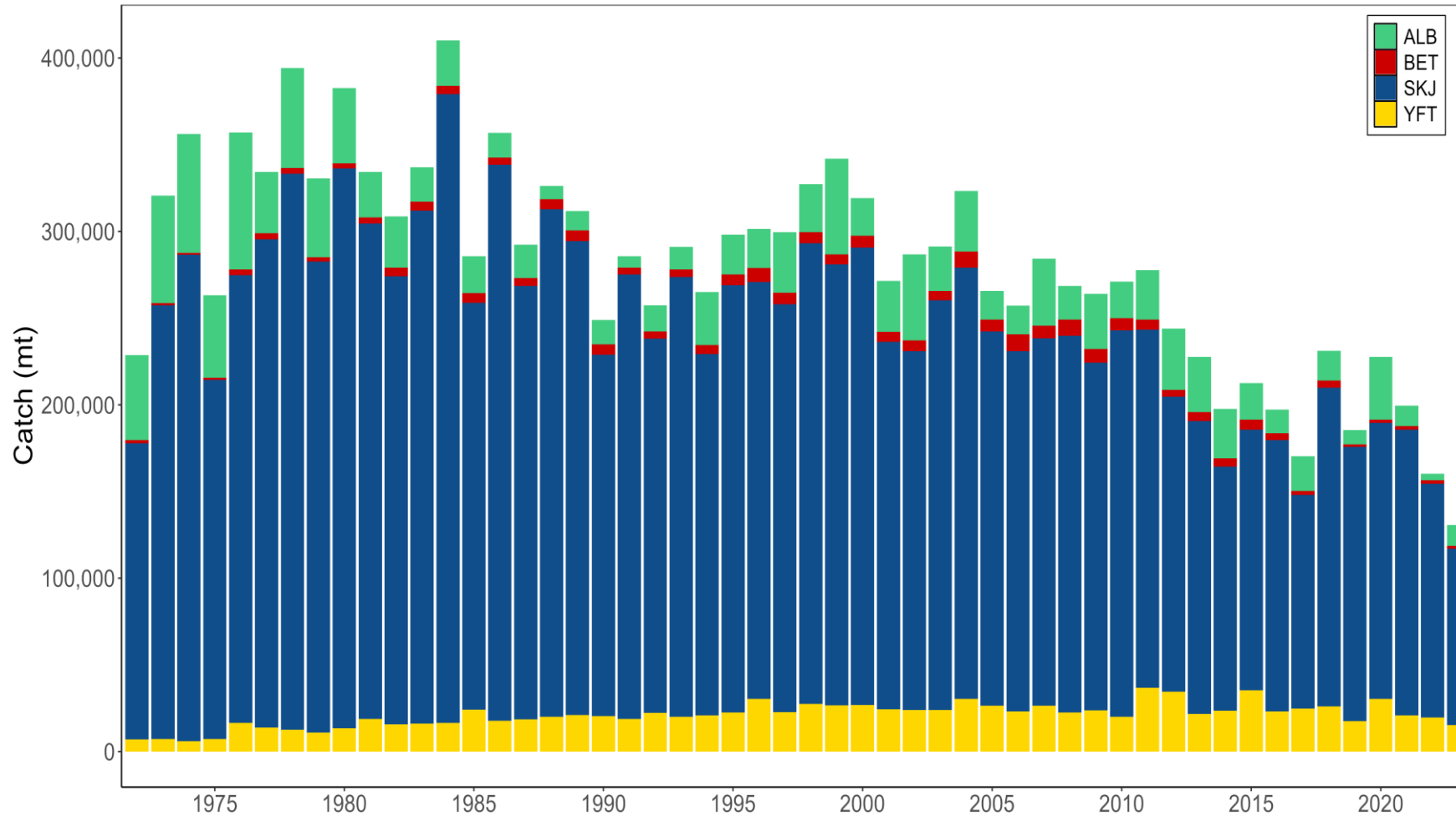
Recent years

- 2017, conditions driven by high prices.
- 2018-2022, conditions driven by high CPUE

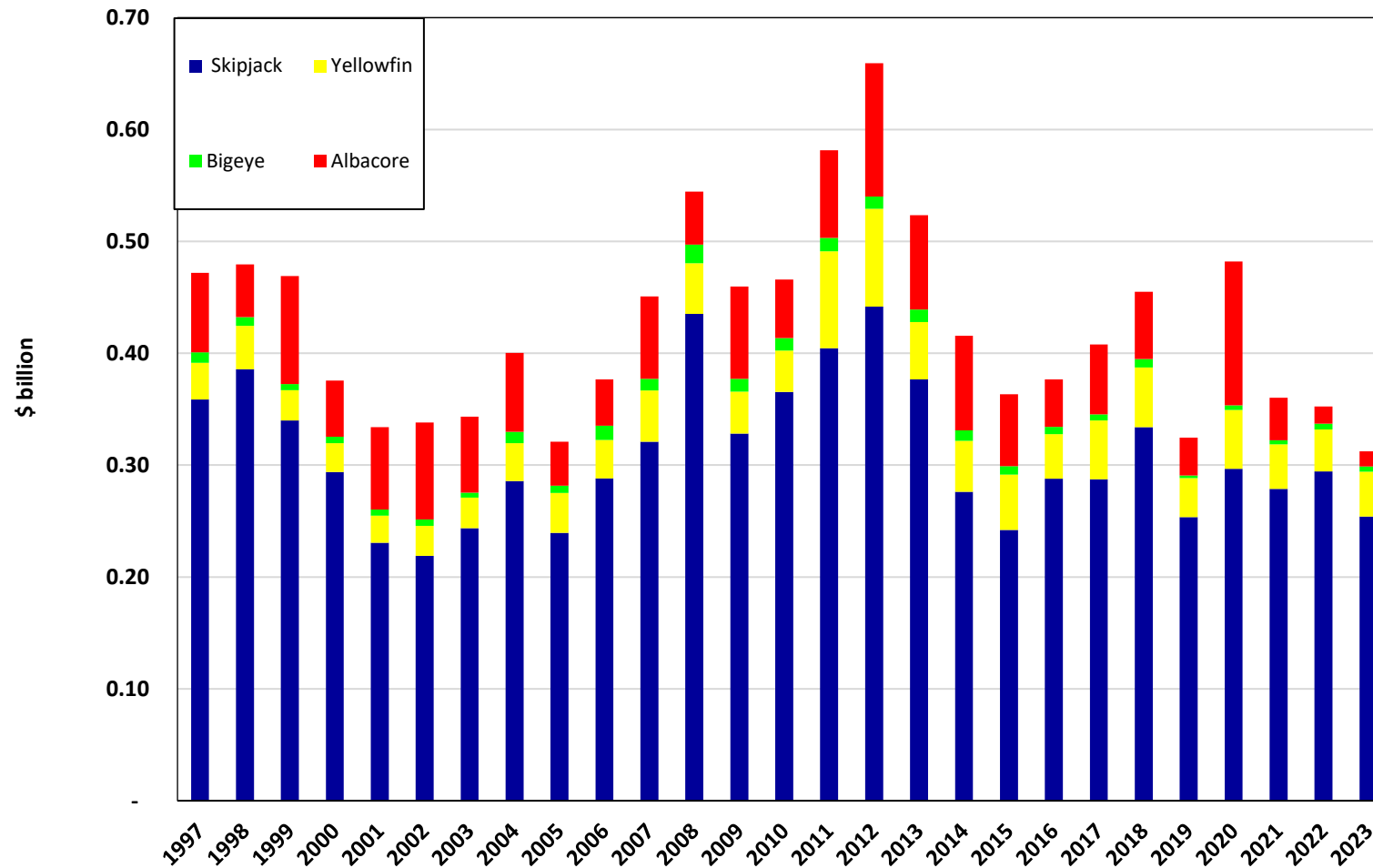
## PURSE SEINE ECONOMIC CONDITIONS INDEX

*Note: Caveat: 2020-21, the impact of COVID-19 pandemic on the cost structure may have been underestimated.*

# Pole-and-Line Catch



# Pole-and-Line Catch Value

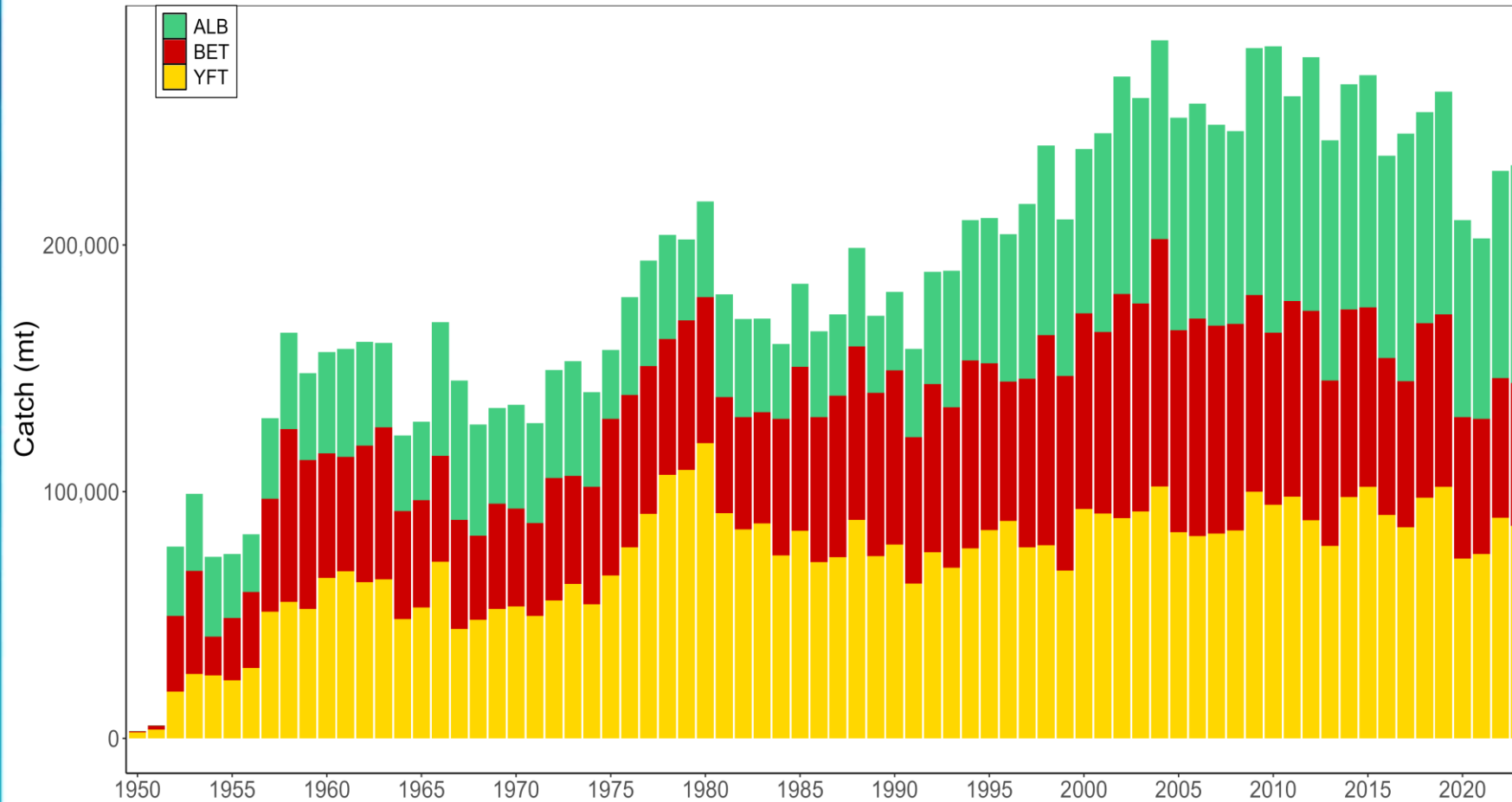


## 2023

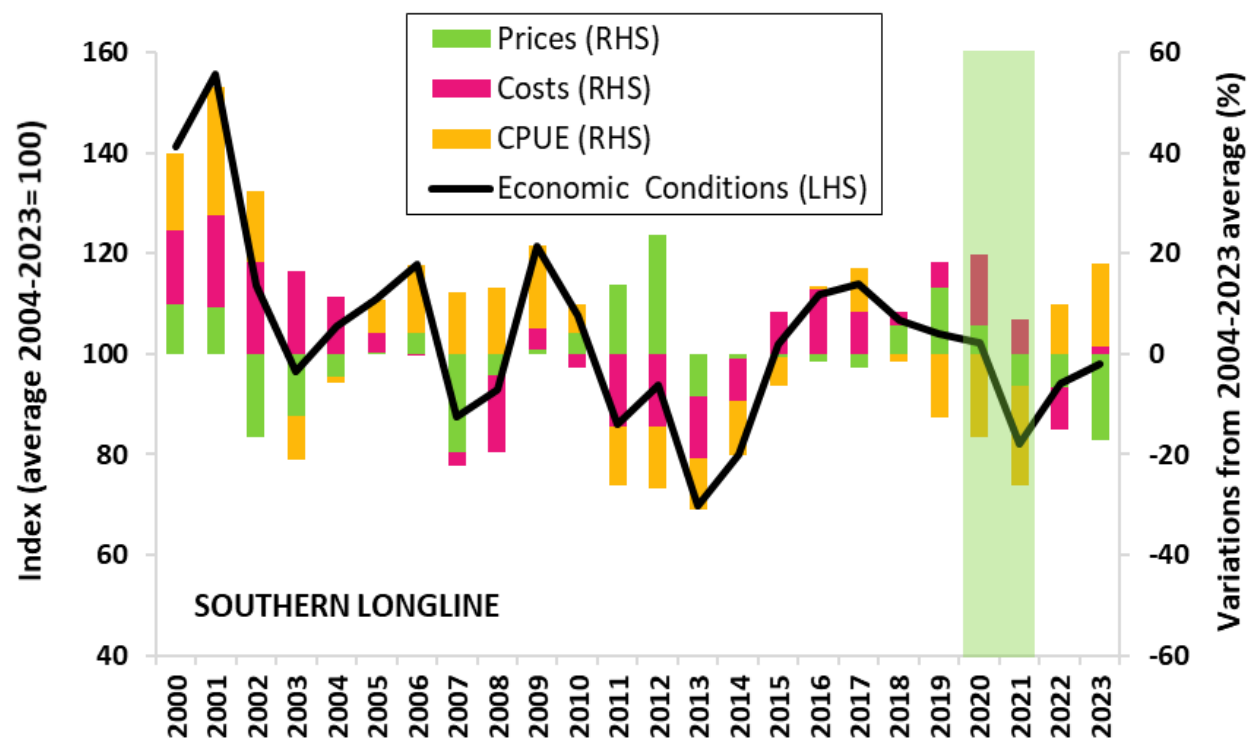
Total value \$312m

- down 11% primarily due to a 7% decline in catch and 13% decline in prices
- Value of skipjack down 14% (\$40 million) to \$254 million

# Longline Catch



# Southern Longline – Economic Conditions



In 2023, economic conditions approaching its 20-year average, primarily due to an increase in catch rates and lower fuel costs

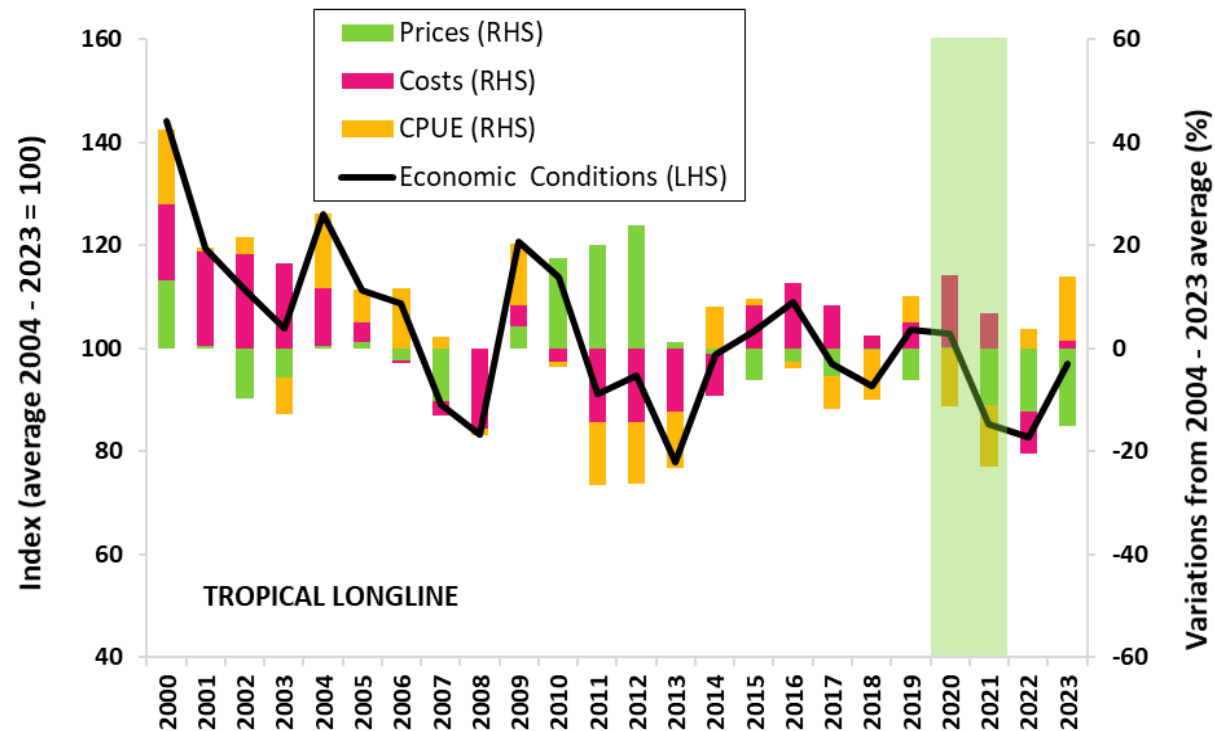
### Recent years

- 2018-2019, conditions driven by high prices
- 2020-2021 conditions worsened due to low CPUE.
- 2022, conditions improved due to increase in CPUE.

### SOUTHERN LONGLINE ECONOMIC CONDITIONS INDEX

*Note: Caveat: 2020-21, the impact of COVID-19 pandemic on the cost structure may have been underestimated.*

# Tropical Longline – Economic Conditions



**TROPICAL LONGLINE ECONOMIC CONDITIONS INDEX**

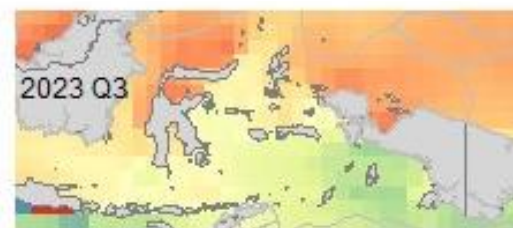
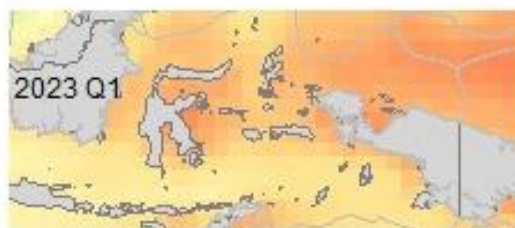
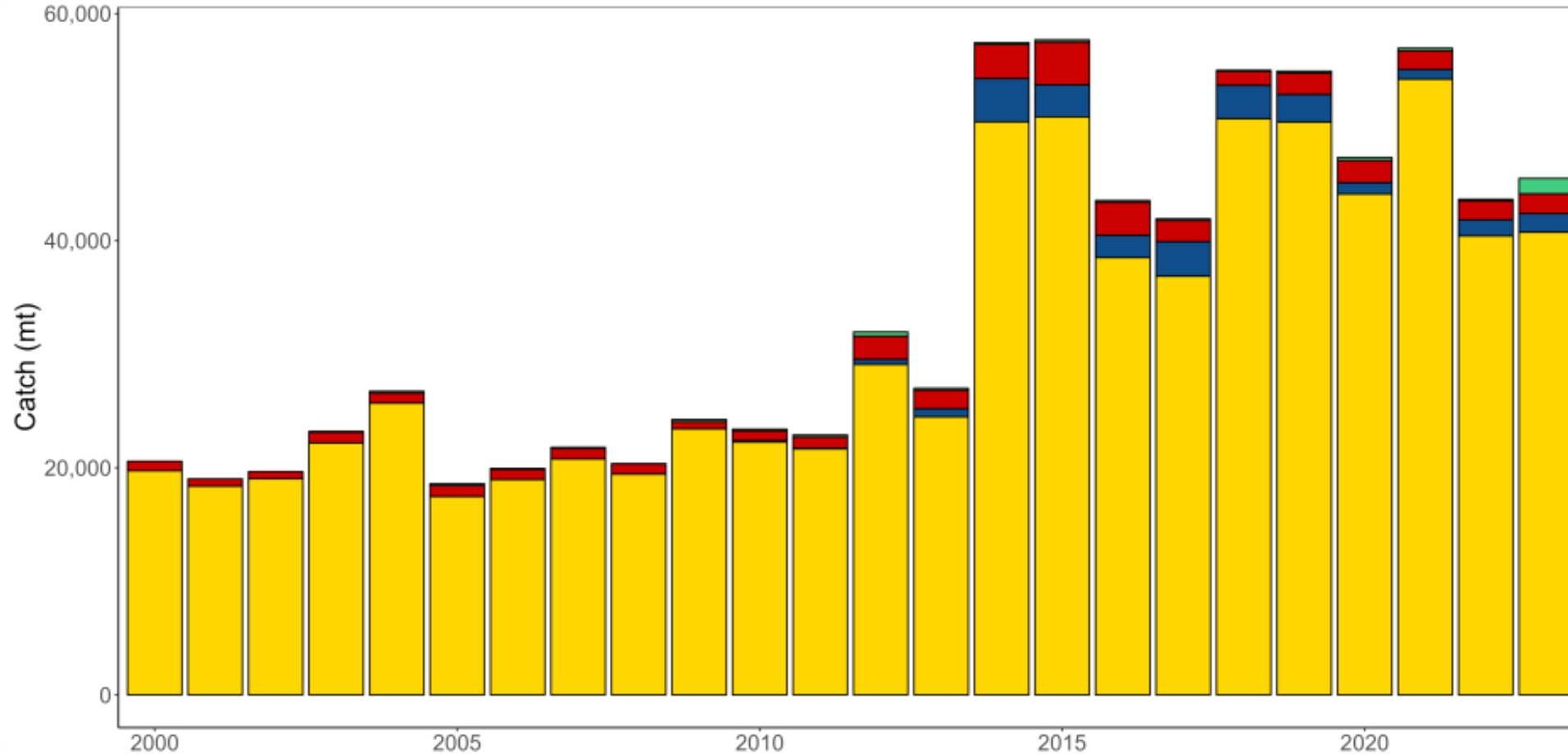
***Note: Caveat: 2020-21, the impact of COVID-19 pandemic on the cost structure may have been underestimated.***

Economic conditions in 2023 improved approaching the 20 year average due to high CPUE and decrease in fuel prices

Recent years

- 2019-2020, conditions hovering around 20 year long term average.
- 2021 conditions worsened due to low CPUE.
- 2022, condition worsened due to escalating fuel prices from the Russia/Ukraine conflict.

# Large-fish Handline Fisheries



# Key highlights from 2023



Pacific  
Community  
Communauté  
du Pacifique

## Catch

- Most fisheries have been relatively stable over the past few years
- YFT catch was 2<sup>nd</sup> highest on records, while SKJ dipped below the 10-year average
- BET catches stable, largely due to management
- Provisional SP ALB catches are down for 2022, but do not yet include EPO catches

## Catch values

- LONGLINE - US\$ 1.6 billion (1% decrease on 2022)
- PURSE SEINE - US\$ 3.5 billion (7% increase on 2022)
- POLE & LINE - US\$ 312 million (11% decrease on 2022)

## Economics conditions

- PURSE SEINE - Index remain above the 20-year average at 109
- SOUTHERN LONGLINE - Index approaching the 20-year average at 98
- TROPICAL LONGLINE - Index approaching the 20-year average at 97