



**SCIENTIFIC COMMITTEE
TWENTIETH REGULAR SESSION**

Manila, Philippines
14–21 August 2024

**Scoping the Next Generation of Tuna Stock Assessment Software:
Progress Report and Outline of Options (Project 123)**

WCPFC-SC20-2024/SA-WP-01
5 August 2024

A. Magnusson¹, N. Davies², G. Pilling¹, P. Hamer¹

¹Oceanic Fisheries Programme of the Pacific Community

²TeTakina Ltd

Contents

- 1 Executive summary** **3**
- 2 Introduction** **4**
 - 2.1 The need to migrate to new software 4
 - 2.2 Project outline 5
 - 2.3 Existing software 6
 - 2.4 Ongoing and upcoming software development 7
- 3 Possible tasks for SPC to prioritize** **8**
 - 3.1 Migrate assessments to existing software 8
 - 3.2 Model exploration using existing software 8
 - 3.3 Software development 9
- 4 Timeline** **9**
 - 4.1 Pre-assessment workshop 2024 9
 - 4.2 International expert meeting 2024 10
 - 4.3 Workshop activities in 2024–2026 12
 - 4.4 Launching the main project 13
- 5 Required resources** **14**
 - 5.1 Collaboration with other tRFMOs 14
 - 5.2 SPC staff positions, consultants 14
- 6 Acknowledgements** **15**
- 7 References** **15**
- A Appendices** **17**
 - A.1 Participants in the international expert meeting 2024 17
 - A.2 List of project deliverables 19

1 Executive summary

This report gives an overview of the current status of the scoping project launched in 2024 and the progress so far. Discussion points for SC20 are highlighted and the resulting recommendations will guide the project, in terms of which of the possible avenues of model exploration and software development options should be prioritized.

Existing stock assessment software of particular relevance have been examined, consulting with the respective development teams: Stock Synthesis, sbt, Gadget, Casal, WHAM, SAM, and ALSCL. Possible extensions could be developed for these existing software to match the modelling needs for WCPFC tuna assessments. The programming environments TMB and RTMB will be compared in more detail later this year, and communications with the FIMS project will continue. International expert meetings were conducted in May and June this year to seek advice from the scientific community and to seek collaboration with tuna RFMOs and various research labs. A further workshop is likely later this year.

The overarching objective of transitioning all WCPFC assessments from MULTIFAN-CL to other software platforms will require a larger project with additional project resources beyond the standard service provision agreement for stock assessments, to allow some staff to focus most of their time on model exploration and software development.

Other tuna RFMOs use primarily Stock Synthesis for tuna assessments, a platform that is also expected to be phased out in the not-too-distant future. Therefore, it would make sense for WCPFC and other tuna RFMOs to coordinate and collaborate in software succession plans and new software development.

Compared to the other tuna RFMOs, there is greater urgency for WCPFC to move this project forward. Independent of decisions and commitments of the other tuna RFMOs, the main project would probably require one staff to be dedicated to this work initially and depending on the direction taken (i.e., use pre-existing software vs. develop new software) an additional staff or consultant with software development skills. It is likely that transitioning MFCL assessments to other software is at least a 5 year proposition, but there are some options to begin this immediately with the simpler billfish assessments, and potentially South Pacific albacore that need to prepare for the inclusion of CKMR data.

We invite SC20 to:

- note that over the next 5+ years, MULTIFAN-CL will begin to be phased out as a software platform for WCPFC tuna and billfish stock assessments;
- note that an international expert meeting was held in 2024 to seek advice from the scientific community and to seek collaboration with tuna RFMOs and various research labs on exploring options and developing the next generation tuna model;
- review and comment on the possible avenues of model exploration and software development, listed in this report, to guide SPC on which of the potential tasks to prioritize in 2024–2026;
- consider recommending increased WCPFC resources that are required to achieve the overarching goal of migrating all MFCL assessments to other software platforms; and
- promote collaboration between tuna RFMOs to coordinate and strengthen the research and development required for MULTIFAN-CL and Stock Synthesis succession plans.

2 Introduction

2.1 The need to migrate to new software

Following the retirement of the lead developer of MULTIFAN-CL (MFCL), Dave Fournier, future advances to the MFCL software are not expected to be as mathematically innovative as they were in the past. While this does not render MFCL obsolete in the medium-term, it flags the need to plan and identify whether alternative existing software exists, or new software must be developed in the longer-term, to continue to support the specificities and future requirements of WCPFC tuna stock assessments.

While MFCL (Fournier et al. 1998) continues to be improved to service the WCPFC tuna assessment needs over at least the next 5+ years, it is important to start on a phased approach to its replacement. An initial scoping phase is required to assess what features and capabilities will be important in future assessment software for tunas. This scoping phase will benefit from input from stock assessment scientists across global tuna RFMOs. Once this scoping phase is conducted, consideration of available software packages in relation to the desired features and capabilities can be conducted. This may identify suitable existing software that has potential to provide the desired features and/or has potential to be developed further. Alternatively, it may indicate whether embarking on development of a new software package is recommended.

There has also been discussion around the need to explore, through modeling/simulation exercises, the benefits of applying alternative assessment structures (i.e., length-age structured versus the traditional length-based age-structured approach of MFCL and Stock Synthesis) before embarking on major software developments or changing methodology. Similar can be said about exploring benefits of state-space models and their use of random variables. Simulation exercises to explore the

benefits or drawbacks of alternative model structures or approaches will also require collaboration across tuna RFMOs and practitioners experienced in using the alternative approaches and/or software.

An important outcome of this work would be to ultimately have a software package that has the desired functionality for tuna assessments, not only for WCPFC, but globally, thus creating a user community and ongoing development support capacity, so as to avoid the current situation we are facing with MFCL. Wider collaboration in this venture is essential to achieving this and is expected to be encouraged through this project.

2.2 Project outline

This scoping project is scheduled from 1 Feb 2024 to 31 Dec 2026. It will:

- evaluate features and capabilities that will be important in future tuna assessments
- explore fitting models to tuna data using existing software platforms
- guide decisions on what kind of new software development will be required
- establish collaboration with tRFMOs and research labs to achieve these goals

Additional projects can be launched in parallel to power up the model exploration and software development.

The project is divided into stages, as follows:

Year 2024

1. Review and identify important features for tuna assessments.
2. Identify existing software platforms that have these features or can be extended.
3. Reach out to and initiate collaboration with model developers.
4. Conduct two workshops in 2024, one online and one in person.

Years 2025 and 2026 (subject to SC advice and funding approvals by WCPFC)

5. Explore and compare existing platforms, fitting to SPC tuna data.
6. Determine which platforms can be considered viable candidates.
7. If a viable candidate platform has been identified, plan transition.
8. If no viable candidate platform is identified, launch a software development project to extend a platform or create a new one.

2.3 Existing software

The CAPAM 2019 Workshop on Next Generation Assessment Models (Punt et al. 2020) provided an overview and discussion of existing software, as well as recommendations for further software development.

For the purposes of tuna assessments, the most relevant existing software (other than MFCL) includes:

- **Stock Synthesis** is used in tuna assessments by the IATTC, IOTC, and ICCAT. Migrating SPC assessments to Stock Synthesis would lose some of the features provided by MFCL and this would be transitioning to another platform that is expected to be phased out in the not-too-distant future. On the other hand, increasing the use of Stock Synthesis at SPC would facilitate collaboration between the tRFMOs, including development of future models. It would also shorten the training time for new SPC stock assessors and make their skills and experience more transferable to subsequent workplaces. Stock Synthesis assessments would allow closer comparisons of assessments conducted across RFMOs and also SPC and the ISC. Stock Synthesis has a large user community that is relevant for peer reviews and discussing technical decisions. It also comes with an exceptionally complete suite of tools useful for diagnostics, as well as automated plots and tables for assessment reports. A possible avenue of collaborative development is to explore the possibility of enhancing the tag module, see [Section 2.4](#).
- **sbt** is used in the assessment of southern bluefin tuna by CCSBT. This package, implemented in TMB, stands out as the primary stock assessment software that is built around close-kin mark-recapture (CKMR) which is a new and important data type in upcoming SPC tuna assessments. The **sbt** R package is designed for a single-region assessment and would require some additional development to be used for a multiregion assessment. A possible avenue of collaborative development is to explore the possibility of adding multiregion functionality to the software.
- **Gadget3** is the latest version of Gadget stock assessment platform, implemented in TMB. It is an age-length structured platform and porting the software to TMB has resulted in a significant performance gain in terms of computational time. Gadget has a wide range of features relevant for tuna assessments and a possible avenue of collaborative development is to test the use of Gadget for a tuna assessment.
- **Casal2** is the latest version of the Casal stock assessment platform, rewritten with an improved design and user interface. Casal has a wide range of features relevant for tuna assessments and a possible avenue of collaborative development is to test the use of Casal for a tuna assessment.

- **Stock Synthesis + CKMR** is an experimental add-on to Stock Synthesis (A.E. Punt, pers. comm), adding CKMR as a data type in Stock Synthesis. This was successful as a proof of concept but it is unlikely to be added to the core software.
- **ALSCL** is a recent model (Zhang and Cadigan 2022) that has two important features: state-space formulation and age-length structure. It is implemented in TMB, but the software currently fits only to survey data and does not include commercial catches or fleets. A possible avenue of collaborative development is to explore the ability of this model to analyze a simplified tuna dataset. This would provide insights into the dynamics of fitting state-space age-length models in general and also be a first step before considering extensions to the model further, see ALSCL + Fleets below.

2.4 Ongoing and upcoming software development

Some ongoing software development projects are of particular interest in the context of the next WCPFC tuna assessment models:

- **Stock Synthesis + Enhanced Tags** is a proposed software development of an enhanced tag module for Stock Synthesis. The current implementation of fitting to tagging data is somewhat limited, e.g., requiring the user to enter the age at release, which is not available in tuna assessments. The idea is to borrow some of the functionality and features from the tag module in MFCL, which has a long record of using tagging data as a primary data type in tuna assessments. A possible avenue of collaborative development is to explore the possibility of contributing an enhanced tag module to be incorporated into the core Stock Synthesis software.
- **WHAM + Length** is a recent software development (Correa et al. 2023) extending the state-space stock assessment software WHAM (Stock and Miller 2021) to fit to length data. A possible avenue of collaborative development is to experiment with fitting the WHAM + Length model to an SPC tuna assessment dataset.
- **ALSCL + Fleets** is a potential software development extending the ALSCL model to address the primary shortcomings of the current ALSCL model as candidate software for tuna stock assessments. A possible avenue of collaborative development is to explore the possibility of adding commercial catches and fleets as software features.
- **SAM + Length** is an early exploration of extending the state-space stock assessment software SAM (Nielsen and Berg 2014) to fit to length data. A possible avenue of collaborative development is to continue this exploration.

- **FIMS** is a NOAA project that coordinates the development of a next-generation framework of stock assessment models based on TMB. So far, model development within FIMS has focused on models fitting to age data. It is not clear at this point whether the FIMS project will lead to stock assessment software that can be used in tuna assessments, but given the considerable resources and collaborative nature of the project, SPC will communicate and interact with the FIMS project to share development progress and ideas.

Model features that are important for future tuna assessment models are reviewed by Punt et al. (2020), Hoyle et al. (2020), and Magnusson and Davies (2024).

Advice on the management and structure of a software development project is provided by Hoyle et al. (2020), covering topics such as design, programming paradigms, maintenance tools, and user interface.

3 Possible tasks for SPC to prioritize

This section discusses core areas for ongoing work, and proposed activities to be considered in each area. We reiterate that progression from MFCL to an alternative software is not a ‘side project’ that can be subsumed within the current SSP resourcing. For this reason we suggest that a small informal working group could be convened by the SC to discuss and prioritise activities that would require additional resources, and develop TORs for priority activities.

3.1 Migrate assessments to existing software

1. Move the swordfish assessment to Stock Synthesis. The Southwest Pacific swordfish assessment model is relatively simple compared to other SPC assessments and would be a good candidate to be the first to migrate from MFCL. The 2025 swordfish assessment could be developed in a stepwise progression: previous MFCL diagnostic \Rightarrow catch-conditioned MFCL \Rightarrow Stock Synthesis.
2. Move the striped marlin assessment to Stock Synthesis. The striped marlin assessment model is also relatively simple and would be a good candidate to migrate from MFCL. The next striped marlin assessment, currently scheduled in 2029, could be developed in a stepwise progression: previous catch-conditioned MFCL diagnostic \Rightarrow Stock Synthesis.

3.2 Model exploration using existing software

3. Conduct model exploration to fit Casal/Gadget/Stock Synthesis to albacore tuna. The South Pacific albacore assessment model is simpler than the other tuna species and therefore a candidate to be the first tuna stock assessment to consider for migration from MFCL. Also, for the next South Pacific albacore assessment there may be CKMR information available to incorporate in the assessment.

4. Conduct model exploration to fit Casal/Gadget/Stock Synthesis to the original five-region yellowfin tuna dataset. The yellowfin assessment is a good candidate to test the capabilities of these software platforms for tuna assessments involving multiple regions, tags, and a large number of fisheries. The yellowfin tuna assessment is similar to bigeye tuna but runs slightly faster, thanks to the simpler five-region structure that was adopted in the 2023 assessment.
5. Conduct model exploration to fit models using a variety of existing software to a simplified single-region yellowfin tuna dataset. Models of interest include ALSCL, Casal, Gadget, MFCL, sbt, Stock Synthesis, and WHAM+Length.

3.3 Software development

3.3.1 Extend existing software

The benefits and rationale of the following software extensions are described in [Section 2.4](#). The prioritization and duration of these tasks may depend on the initial findings of these and other tasks, available resources, and the availability of external scientists involved.

6. ALSCL+Fleets. Scientists involved could include Fan Zhang (Shanghai Ocean University) and Nick Davies (SPC consultant).
7. Stock Synthesis+Enhanced Tags. Scientists involved could include Nicholas Ducharme-Barth (NOAA), Matthew Vincent (NOAA), and Arni Magnusson (SPC).
8. WHAM+Length. Scientists involved could include Giancarlo Correa (AZTI) and Arni Magnusson (SPC).
9. SAM+Length. Scientists involved could include Anders Nielsen (DTU), Colin Millar (ICES), and Arni Magnusson (SPC).

3.3.2 Design and develop new software for tuna assessments

10. Initial explorations using RTMB, starting with simple model development and gradually adding complexity and tests. Scientists involved could include Nick Davies (SPC consultant) and Arni Magnusson (SPC).

4 Timeline

4.1 Pre-assessment workshop 2024

An initial outline and discussion of project 123 was presented (Magnusson and Davies 2024a) at the pre-assessment workshop at SPC headquarters on 28 March 2024. It provided a summary of existing software platforms and ongoing software development projects, a roadmap of the project, and highlighted the need for increased resources needed to conduct model exploration and software development.

4.2 International expert meeting 2024

Two online meetings were held on 13 May and 18 June 2024, inviting stock assessment and software development experts from around the world. Around 40 participants represented the tuna RFMOs (CCSBT, IATTC, ICCAT, IOTC, WCPFC), stock assessment software projects (ALSCL, CASAL, FIMS, Gadget, MFCL, SAM, sbt, Stock Synthesis, WHAM), and relevant programming environments (ADMB, RTMB, TMB). See participant list in [Section A.1](#).

4.2.1 Objectives

The meeting objectives were:

1. Communicate SPC scoping project and upcoming explorations, decisions, and development.
2. Discuss succession plans for MULTIFAN-CL as well as Stock Synthesis.
3. Seek advice from the scientific community.
4. Seek collaboration with tuna RFMOs and various research labs.

4.2.2 Format

The two sessions had the same format and agenda, but one was centered on European time zones and the other on North American time zones. The meeting agenda covered the following discussion topics:

- Platforms currently used in tuna stock assessments
- Common challenges for all tuna RFMOs, longevity of Stock Synthesis and MULTIFAN-CL, succession plans
- SPC challenges and project plan
- Features of current and future platforms
- Discussion on platform features most relevant for tuna
- State-space models and latest developments
- What do you think is the best way forward for SPC?
- Summary of discussions, next steps, collaboration

4.2.3 Outcomes

The following recommendations emerged from the discussions at the international expert meeting:

1. **Tuna assessment software.** There was a consensus among the experts that the goal should be to design and develop a model specific for tuna assessments, rather than a general model for global usage and all species. The advice was to start with a lean design and get a simple model

up and running before adding all the features required for an assessment. In general, the cost of adding features is much greater than the implementation cost, as each layer complexity makes long-term maintenance and future modifications of the software more difficult and costly.

2. **RTMB as a lean software development paradigm.** RTMB (Kristensen 2024) is a new alternative interface for developing TMB (Kristensen et al. 2017) models. RTMB provides a leaner development paradigm than TMB. The recommendation from the TMB/RTMB development team, articulated at the expert meeting, was to develop the next tuna stock assessment model in RTMB rather than TMB. Another recommendation from the TMB/RTMB development team, given the streamlined nature of RTMB model implementation is for SPC to consider writing specific models for each species, rather than a general platform for all species and tRFMOs. A specific RTMB model requires a very small codebase that is easy to maintain and modify. Parts of code can still be reused between species, either as code blocks or functions.
3. **State-space formulation.** State-space models are a statistically and computationally efficient way to allow time-varying processes in stock assessment models, such as time-varying selectivity. Other statistical approaches exist, but the successful track record of using state-space models in production assessments, e.g., across a variety of Atlantic groundfish stocks, indicates that state-space formulation can be recommended for new model development.
4. **Age-length structure.** Gadget models explicitly track the population by age and length, accounting for the fact that fast-growing individuals are caught by the fishery and the slow-growing individuals in the cohort remain in the population. Casal and Stock Synthesis have optional model features with a similar aim. This leads to an improved level of realism, and simulations using a very basic model ALSCL (Zhang and Cadigan 2022) indicate improved estimation accuracy. It is worth noting that the ALSCL simulation study involved a single-area model with survey data and no commercial catch data or fleets, which is quite far from the model complexity of tuna assessments. An important drawback is that tracking the population structure in terms of age and length, instead of age only, comes at a considerable computational cost. The SPC tuna assessment models that are currently run in MFCL are already very computationally heavy, with models requiring to run overnight before results are available. The recommendation is to explore the feature of incorporating full age-length structure in the next tuna assessment models, considering estimation performance and the difference in the resulting management advice, as well as computational time, required software development, and maintenance cost.
5. **Simple models.** SPC challenges were outlined and discussed at the meeting, focusing on the upcoming paradigm change in how stock assessments are conducted at SPC. The MFCL Team (Dave Fournier, John Hampton, Nick Davies) will be retiring in the 2020s. Other stock assessment staff tend to have a relatively quick turnover rate, often consisting of young scientists with relatively few years of stock assessment experience before they start their job

at SPC. It takes many years to become an expert in MFCL, with John Hampton typically making the main modeling decisions and guiding new staff, with the help of Nick Davies. Generally, it is preferable to have some long-term staff in the stock assessment team, but it is precautionary and prudent to prepare for an era where there might be no long-term staff, only short-term. In software design terms, this would favor not only a simple and intuitive user interface but also simpler assessment models than have been used in the past.

- 6. Collaboration between tuna RFMOs.** For undertaking tuna assessments that fit to length composition data from multiple fisheries, SPC uses MFCL, while other tuna RFMOs use primarily Stock Synthesis. Both software platforms are currently in a sunset phase, heading towards end of life in the coming years. Development of new features in MFCL and Stock Synthesis is slowing down, with resources being allocated to succession plans. For SPC, it would be preferable to avoid developing and maintaining major software products that are not used outside of SPC. The statistical challenges of analyzing tuna data are comparable between the tuna RFMOs, noting some differences like degree of tagging data, so it makes sense to coordinate and collaborate in succession plans and new software development.

The discussion at the international expert meeting covered several other topics, but the above recommendations are particularly relevant for initial explorations and development. The presentations from the international expert meeting are available online ([Section A.2](#)). In addition to the discussion and recommendations, an important outcome of the international expert meeting was to establish collaboration with various research labs related to the development of new tuna assessment models. See next section.

4.3 Workshop activities in 2024–2026

The first steps in the scoping project 123 have involved a review of software needs and existing software, an evaluation of options, establishing collaborative ties with research labs, and reaching out to scientists from the other tRFMOs for coordination and consultation. We expect that presentation of the outcomes so far at SC20 will facilitate discussion and the feedback from SC will guide which of the tasks listed in [Section 3](#) will be prioritized. Discussions at SC should help guide TORs for each year’s successive work.

Hands-on technical workshops will be conducted in 2024–2026 to strengthen collaboration ties and make stepwise progress on tasks that have been selected as priorities. If prioritized, the work on migrating billfish assessments (Tasks 1–2 in the list of tasks) will be conducted by SPC scientists independent of project 123 workshops. Progress with model exploration using alternative software (Tasks 3–5) and software development (Tasks 6–9), if prioritized, will depend on the resources and number of staff and consultants engaged in those tasks. Another factor is the availability and commitment of external scientists and other tRFMOs.

Project 123 includes a budget that can be used to invite selected external scientists to attend technical workshops to collaborate with SPC scientists on selected tasks. A workshop might be organized for a week, either at SPC headquarters or at another convenient venue, and collaborative work conducted before, during, and after a workshop.

The first hands-on technical workshop had been planned at SPC headquarters around October–November 2024, inviting two scientists. However, the unrest in New Caledonia in 2024 will prevent such a workshop being conducted at that time.

Instead, the first hands-on technical workshop will take place in New Zealand on 23–30 August 2024, with Nick Davies (SPC consultant) and Arni Magnusson (SPC) meeting directly after the SC meeting in Manila. The main objectives are to test the functionality and capabilities of RTMB on simple models and to conduct exploratory runs of the ALSCL model. The 2024 workshop will evaluate RTMB as a programming environment and paradigm for further software development, exploring technical aspects such as whether it would be practical to organize the majority of source code behind an assessment model as scripts, a package, or more than one package. This would determine how code is maintained and shared between assessments of different species.

The 2024 workshop corresponds to Task 10 listed in [Section 3](#). Focus topics for workshops in 2025 and 2026 will be selected based on which tasks will be prioritized by the WCPFC Scientific Committee and SPC.

4.4 Launching the main project

The current annual budget of project 123 is sufficient for scoping the needs, identifying current software platforms, reaching out to the scientific community for consultation, and to conduct occasional workshops to strengthen collaboration ties and initial explorations. This corresponds to the first line in [Figure 1](#) and objectives 1–4 in the project outline ([Section 2.2](#)).

The goal of the *main project*, which could either overlap or succeed the scoping project, is to test/develop tuna stock assessment software and transition all SPC assessments from MFCL to other platforms. To make significant progress on the steps required to complete the main project (see full diagram in [Figure 1](#)), thus achieving objectives 5–8 in the project outline ([Section 2.2](#)), a substantially larger commitment of resources will be required, see next section.

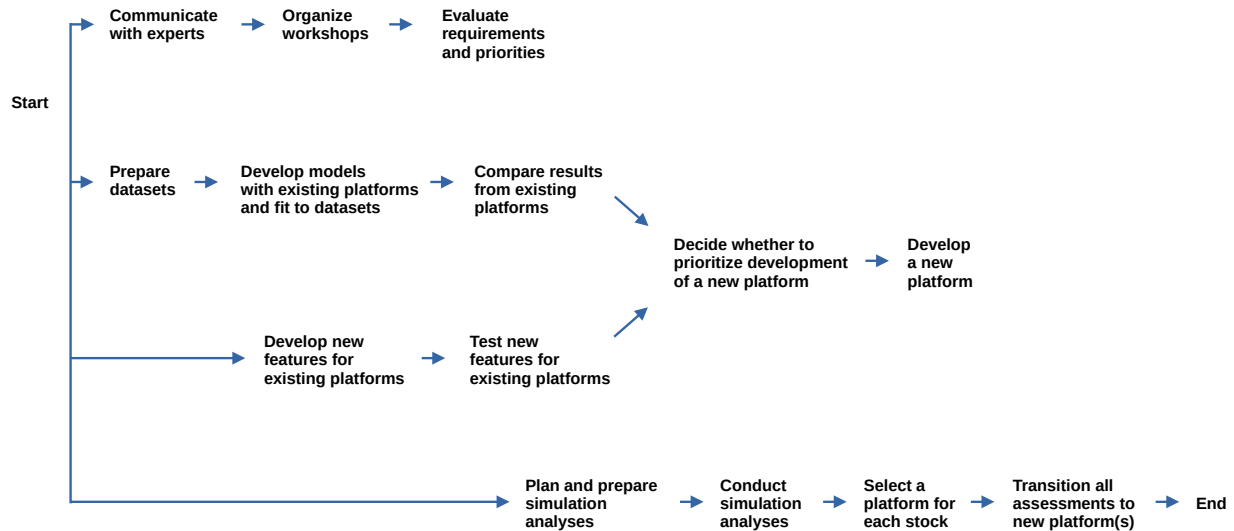


Figure 1: Overview of steps related to the next generation of tuna stock assessment software. Project 123 will focus on the first line of scoping tasks (communicate, organize, evaluate) and prepare the ground for subsequent lines of tasks (the main project), which will require additional funding and resources.

5 Required resources

5.1 Collaboration with other tRFMOs

There are significant potential benefits for the tuna RFMOs to coordinate together and collaborate on succession plans and new software development (expert meeting recommendation 6). Coordination and collaboration has already begun between tuna stock assessment scientists, with one-on-one consultation meetings before and after the 2024 international expert meeting.

The next step is for the tRFMOs to discuss financial and staff commitments to formalize and strengthen collaboration related to succession plans and new software development. Projects to accomplish the tasks laid out in Figure 1 will require considerable resources. To achieve the desired rate of progress and scientific quality of the end result, each tRFMO could hire/assign one full-time person to the project for five years, or until assessments have been transitioned to the new software.

5.2 SPC staff positions, consultants

The research and development required to test, design and develop stock assessment software and successfully transition all SPC assessments from MFCL to other platforms is difficult to estimate precisely, in terms of budget and time. It is clear, however, that it will likely to take several years for a newly formed team consisting of SPC staff scientists and/or consultants, along with collaborators from other tRFMOs and research labs. To succeed, this team should be primarily assigned to this project and not committed to the traditional stock assessment related tasks and workflows. There is interaction between the roles of a *project coordinator*, *fisheries scientist*, and *software developer*,

but it would be helpful for the project to define the role of each staff scientist and consultant as clearly as possible, to accurately measure the resources committed to the main project.

The resources committed to the main project will determine the scientific quality of the end result and the number of years it takes to transition all SPC assessments from MFCL to other platforms. Now that the first author of MFCL, David Fournier, has retired, it would be highly beneficial for the project to move relatively fast, before the remaining MFCL team (John Hampton and Nick Davies) retire and will no longer be available for consultation and involvement regarding software design, testing and technical decisions.

Compared to the other tuna RFMOs, there is greater urgency for WCPFC to move this project forward. Independent of decisions and commitments of the other tuna RFMOs, the main project would probably require one staff to be dedicated to this work initially and depending on the direction taken (i.e., use pre-existing software vs. develop new software) an additional staff or consultant with software development skills. It is likely that transitioning MFCL assessments to other software is at least a 5 year proposition, but there are some options to begin this immediately with the simpler billfish assessments, and potentially South Pacific albacore that need to prepare for the inclusion of CKMR data.

6 Acknowledgements

We thank WCPFC and ISSF for funding this scoping project. We are also grateful for the valuable input of the scientists and software developers who joined the online meetings of the 2024 international expert meeting.

7 References

- Correa, G.M., C.C. Monnahan, J.Y. Sullivan, J.T. Thorson, and A.E. Punt. 2023. Modelling time-varying growth in state-space stock assessments. *ICES J. Mar. Sci.* 80:2036–2049.
- Fournier, D.A., J. Hampton, and J.R. Sibert. 1998. MULTIFAN-CL: A length-based, age-structured model for fisheries stock assessment, with application to South Pacific albacore, *Thunnus alalunga*. *Can. J. Fish. Aquat. Sci.* 55:2105–2116.
- Hoyle, S.D., M.N. Maunder, and Z.T. A’mar. 2020. Frameworks for the next generation of general stock assessment models: 2019 CAPAM workshop report. *New Zealand Fish. Assess. Rep.* 2020/39. 80 pp.
- Kristensen, K. 2024. RTMB: R bindings for TMB. R package version 1.5.
<https://cran.r-project.org/package=RTMB>.
- Kristensen, K. A. Nielsen, C.W. Berg, H. Skaug, and B.M. Bell. 2016. TMB: Automatic differentiation and Laplace approximation. *J. Stat. Softw.* 70(5):1–21.

- Magnusson, A. and N. Davies. 2024a. Scoping the next stock assessment platform, P123: Background and discussion. Presented at the SPC pre-assessment workshop, 28 March 2024. 13 pp. [Available online](#).
- Magnusson, A. and N. Davies. 2024b. Scoping the next stock assessment platform, stage I: Reaching out to tuna RFMOs and the scientific community. Presented at the SPC international expert meeting, 13 May and 18 June 2024. 31 pp. [Available online](#).
- Nielsen, A. and C.W. Berg. 2014. Estimation of time-varying selectivity in stock assessments using state-space models. *Fish. Res.* 158:96–101.
- Punt, A.E., A. Dunn, B.P. Elvarsson, J. Hampton, S.D. Hoyle, M.N. Maunder, R.D. Methot, and A. Nielsen. 2020. Essential features of the next-generation integrated fisheries stock assessment package: A perspective. *Fish. Res.* 229:105617.
- Stock, B.C. and T.J. Miller. 2021. The Woods Hole Assessment Model (WHAM): A general state-space assessment framework that incorporates time- and age-varying processes via random effects and links to environmental covariates. *Fish. Res.* 240:105967.
- Zhang, F. and N.G. Cadigan. 2022. An age-and length-structured statistical catch-at-length model for hard-to-age fisheries stocks. *Fish and Fish.* 23:1121–1135.

A Appendices

A.1 Participants in the international expert meeting 2024

Name	Affiliation	Country
Agurtzane Urtizberea	AZTI	Spain
Ai Kimoto	ICCAT	Spain
Alistair Dunn	Ocean Environmental	NZ
Anders Nielsen	DTU Aqua	Denmark
Andre Punt	Univ Washington	USA
Andrea Havron	NOAA	USA
Arni Magnusson	SPC	New Caledonia
Bjarki Elvarsson	MFRI	Iceland
Carolina Minte-Vera	IATTC	USA
Christopher Cahill	Michigan State Univ	USA
Claudio Castillo Jordán	SPC	New Caledonia
Colin Millar	ICES	Denmark
D’Arcy Webber	Quantifish	NZ
Fan Zhang	Shanghai Ocean Univ	China
Finlay Scott	SPC	New Caledonia
Giancarlo Correa	AZTI	Spain
Graham Pilling	SPC	New Caledonia
Haikun Xu	IATTC	USA
Hilario Murua	ISSF	Spain
Jamie Lentin	Shuttle Thread	UK
Jemery Day	SPC	New Caledonia
Jim Ianelli	NOAA	USA
John Hampton	SPC	New Caledonia
Johnnoel Ancheta	Univ Hawaii	USA
Kelli Johnson	NOAA	USA
Laura Tremblay-Boyer	CSIRO	Australia
Mark Maunder	IATTC	USA
Matthew Vincent	NOAA	USA
Michael Schirripa	NOAA	USA
Nan Yao	SPC	New Caledonia
Nathan Taylor	ICCAT	Spain
Nicholas Ducharme-Barth	NOAA	USA
Nick Davies	TeTakina	NZ
Noel Cadigan	Memorial Univ	Canada

Name	Affiliation	Country
Paul Hamer	SPC	New Caledonia
Rich Hillary	CSIRO	Australia
Rick Methot	NOAA	USA
Rob Scott	SPC	New Caledonia
Sam McKechnie	SPC	New Caledonia
Scott Rasmussen	Waddle	NZ
Shelton Harley	Ministry Primary Ind	NZ
Simon Hoyle	Hoyle Consulting	NZ
Thomas Tears	SPC	New Caledonia
Tim Miller	NOAA	USA

A.2 List of project deliverables

Project website

<https://github.com/PacificCommunity/ofp-sam-transition-plan>

Presentations

2024

Magnusson, A. and N. Davies. 2024a. Scoping the next stock assessment platform, P123: Background and discussion. Presented at the SPC pre-assessment workshop, 28 March 2024. 13 pp. [Available online](#).

Magnusson, A. and N. Davies. 2024b. Scoping the next stock assessment platform, stage I: Reaching out to tuna RFMOs and the scientific community. Presented at the SPC international expert meeting, 13 May and 18 June 2024. 31 pp. [Available online](#).

Davies, N. 2024. MULTIFAN-CL: Longevity and valuable features for tuna dynamics. Presented at the SPC international expert meeting, 13 May and 18 June 2024. 8 pp. [Available online](#).

Reports

2024

Magnusson, A., N. Davies, G. Pilling, and P. Hamer. Scoping the next generation of tuna stock assessment software: Progress report and outline of options (project 123). WCPFC-SC20-2024/SA-WP-01. 18 pp. [Available online](#).