



**SCIENTIFIC COMMITTEE  
TWENTIETH REGULAR SESSION**

Manila, Philippines  
14 – 21 August 2024

---

**Catch and Effort Data Summaries  
to support discussions  
on the TROPICAL TUNA CMMs**

---

**WCPFC-SC20-2024/MI-IP-05**

Paper prepared by the Secretariat  
and  
Oceanic Fisheries Programme (OFP)  
Pacific Community (SPC)

# Contents

<b>1. Purse seine fishery information .....</b>	<b>3</b>
Table 1. Purse seine days fished in waters under national jurisdiction and in the high seas (20°N-20°S) .....	3
Table 2. Purse seine days fished in the high seas in the WCPFC-CA between 20°N and 20°S, by flag.....	5
Table 3. Estimated FAD sets undertaken in the tropical purse seine fishery, by flag, 2001-2023.....	7
Table 4. Tropical purse seine tuna catch and effort by set type and species in the WCPFC Convention Area.....	9
Table 5. Annual high seas FAD sets, by fleet, 2015–2023. ....	17
Figure 1. Tuna catch estimates (mt) in the WCP–CA, by broad area, all gear types. ....	18
Figure 2. Cumulative tropical purse seine days at sea by month, 2009-2024, as measured by VMS.....	18
Figure 3. Annual trends in purse seine effort in the WCPFC Convention Area between 20°N and 20°S. ....	19
Figure 4. Purse seine effort (days fishing and searching) in the WCPFC Convention Area between 20°N and 20°S. ....	20
Figure 5. Sets by set type made in the WCPO tropical purse seine fishery, 2000 – 2022.....	20
Figure 6. Proportion of the total purse seine fishing activity comprising associated sets.....	21
Figure 7. Monthly purse seine catch by species .....	22
Figure 8. Monthly average weight of bigeye, skipjack and yellowfin tuna. ....	23
Figure 9. Purse seine effort in waters under national jurisdiction (EEZs and AWs) and in high seas (20°N-20°S).....	24
Figure 10. Purse seine effort in high seas (20°N–20°S), by fleet category.....	25
Figure 11. Estimated FAD sets undertaken in the tropical purse seine fishery (20°N -20°S), by fleet category.....	26
Figure 12. Purse seine tuna catch (top) and effort (bottom) by set type and species .....	27
<b>2. Longline fishery information .....</b>	<b>28</b>
Table 6. Reported longline catches metric tonnes of bigeye tuna in the WCPFC-CA, by flag.....	28
Table 7. Reported longline catches (metric tonnes) of yellowfin tuna in the WCPFC-CA, by flag.....	30
Table 8. Longline effort (100s of hooks) in the tropical WCPFC LONGLINE fishery (20°N-10°S), by fleet.....	32
Figure 13. Estimates of effort, bigeye catch and nominal CPUE for the CORE tropical WCPFC longline fishery .....	33
Figure 14. Estimates of effort, bigeye catch and nominal CPUE for the EASTERN tropical WCPFC longline fishery.....	34
Figure 15. Reported longline catches (metric tonnes) of bigeye tuna in the WCPFC-CA, by fleet category.....	35
Figure 16. Reported longline catches (metric tonnes) of yellowfin tuna in the WCPFC-CA, by fleet.....	35
Figure 17. Longline effort (100s of hooks) in the tropical WCPFC LONGLINE fishery (20°N-10°S), 2010-2023. ....	36
Figure 18. Annual trends in nominal bigeye tuna CPUE in the tropical WCPFC LONGLINE fishery (20°N-10°S).....	37
<b>3. Other Commercial fisheries information .....</b>	<b>38</b>
Table 9. Tropical tuna catch estimates for OTHER FISHERIES relevant to the tropical tuna measure .....	38
Table 10. Tropical tuna catch estimates for OTHER FISHERIES deemed exempt from the tropical tuna measure .....	39
<b>4. ANNEX.....</b>	<b>40</b>
Table A1. Notes on major recent changes to tables/figures .....	40

# 1. Purse seine fishery information

**Table 1. Purse seine days fished in waters under national jurisdiction and in the high seas (20°N-20°S)**

Table 1. Purse seine days fished in waters under national jurisdiction and in International waters (20°N-20°S) in the WCPFC-CA

EEZ	2001	2002	2003	2004	2005	2006	2007	2008	2009	2010	2011	2012	2013	2014	2015	2016	2017	2018	2019	2020	2021	2022	2023	Notified / Estimated EEZ Limits	See NOTE (s)	
AUSTRALIA	23	14	24	9	0	2	0	1	1	0	0	0	0	0	0	0	0	0	0	0	0	0	0	0	#	2,9,15
COOK ISLANDS	46	225	8	6	2	8	3	29	45	17	104	479	209	353	348	202	530	696	587	305	83	101	183	1,250	2,15	
FIJI	12	5	10	26	36	6	6	23	12	29	27	27	32	0	50	43	31	3	12	1	0	0	1	300	2,15	
FRENCH POLYNESIA	0	2	0	0	0	0	0	0	0	0	0	0	0	0	0	1	0	0	0	0	0	0	1	0	2,15	
INDONESIA	485	442	496	672	933	767	573	374	414	276	567	1,347	2,925	1,703	1,195	2,362	3,015	839	1,257	1,485	1,661	1,503	1,525	70,820	2, 4, 16	
JAPAN	2,203	2,993	2,249	2,190	1,757	1,678	2,028	1,533	1,445	1,701	204	302	465	198	653	641	670	349	416	616	220	243	813	1,500	2,9,10,13,15	
NEW ZEALAND	218	174	167	313	359	218	217	234	128	218	261	268	290	268	278	197	152	110	123	115	104	0	1	#	2, 9, 15	
NIUE	0	0	1	0	0	0	0	0	0	0	1	0	0	0	0	0	0	0	0	0	0	0	0	200	2,15	
PHILIPPINES	918	967	1,346	1,421	1,311	1,352	1,520	1,800	1,263	814	491	491	1,010	1,411	1,070	1,143	1,518	985	1,122	1,731	1,351	1,178	1,180	*	2,4,6,8,17,1	
REPUBLIC OF KOREA	0	0	0	0	0	0	0	0	0	0	0	0	0	0	0	0	0	0	0	0	0	0	0	*	2, 18	
SAMOA	8	12	4	2	3	2	4	7	13	7	38	32	45	15	31	85	13	5	4	15	8	10	0	150	2,15	
TOKELAU	100	374	25	67	126	30	47	132	210	190	875	721	380	623	1,322	189	741	910	215	431	173	98	128	1,000	2,13,15	
TONGA	2	0	0	1	0	0	0	0	0	0	0	0	2	0	2	18	11	0	0	0	0	0	0	250	2,15	
CHINESE TAIPEI	0	0	0	0	0	0	0	0	0	0	0	0	0	0	0	0	0	0	0	0	0	0	0	*	2, 18	
USA	339	484	228	295	147	198	100	63	124	36	49	209	189	261	90	111	138	105	81	146	135	175	136	558	2, 15	
VANUATU	2	2	0	19	1	0	0	14	1	0	5	5	1	0	4	0	1	0	0	7	0	0	0	200	2,15	
WALLIS AND FUTUNA	5	9	6	1	4	2	0	7	8	2	3	2	0	1	0	0	0	0	0	0	0	0	0	*	2, 18	
PNA EEZs (excl AWS)	24,974	27,038	29,264	30,329	32,443	32,220	31,726	34,771	33,110	44,267	47,382	41,883	44,331	42,575	30,986	35,667	37,000	34,811	33,047	33,519	34,660	34,433	32,526	44,033	5, 12,15,20	
PNA AWS only	2,426	2,215	3,554	3,093	4,654	3,917	5,708	6,320	7,289	6,255	8,663	8,826	7,996	6,711	3,812	3,806	5,384	3,937	2,834	6,126	4,442	5,010	4,802		5	
PNA EEZs + AWS =																										
TOTAL PNA	27,400	29,253	32,818	33,422	37,097	36,137	37,434	41,091	40,399	50,522	56,045	50,709	52,327	49,286	34,798	39,473	42,384	38,748	35,881	39,645	39,102	39,443	37,328		5	
TOTAL EEZs - excl.																										
PNA AWS	29,307	32,718	33,798	35,341	37,119	36,479	36,224	38,980	36,765	47,555	50,004	45,764	49,879	47,407	36,029	40,659	43,820	38,813	36,864	38,371	38,395	37,741	36,494			
TOTAL EEZs - excl.																										
PNA AWS and ID/PH	27,904	31,309	31,956	33,248	34,875	34,360	34,131	36,806	35,088	46,465	48,946	43,926	45,944	44,293	33,764	37,154	39,287	36,989	34,485	35,155	35,383	35,060	33,789			
TOTAL EEZs + PNA AWS	31,761	34,956	37,382	38,444	41,777	40,400	41,932	45,308	44,063	53,812	58,670	54,592	57,875	54,119	39,841	44,465	49,204	42,750	39,698	44,497	42,837	42,751	41,296	117,524		
TOTAL INT. WATERS (20°N-20°S)	7,365	8,113	8,489	10,381	8,922	6,858	8,164	8,589	10,071	1,467	1,500	2,422	6,131	5,693	8,285	6,935	6,618	7,379	8,493	7,987	6,730	5,417	7,556		6,8,11	
TOTAL (EEZs + IW + PNA AWS)	39,126	43,069	45,871	48,825	50,699	47,258	50,096	53,897	54,134	55,279	60,170	57,014	64,006	59,812	48,126	51,400	55,822	50,129	48,191	52,484	49,567	48,168	48,852	125,080		
TOTAL minus ID/PH	37,223	41,160	43,529	46,232	47,955	44,639	47,503	51,223	51,957	54,189	59,112	55,176	60,071	56,698	45,861	47,895	51,289	48,305	45,812	49,268	46,555	45,487	46,147	122,375		
VIETNAM	0	0	0	0	0	0	0	0	0	0	0	0	0	0	0	0	0	0	0	0	0	0	0	0	14	

## NOTES

1. Source: Raised logsheet data.
2. CMM 2014-01, CMM 2015-01, CMM 2016-01 -- Para. 23. for years 2015-2017; CMM 2017-01, CMM 2018-01, CMM 2020-01 for years 2018 – 2021, CMM 2021-01 for year 2022 and 2023.
3. Catches and effort of vessels operating under charters and similar arrangements have been attributed to host island states or territories in accordance with paragraph 2 of CMM 2008-01 (paragraph 5 of CMM 2012-01, paragraph 5 of CMM 2013-01 or its replacement CMM) using the best information available to SPC-OPF. However, in some cases, catches have not yet been attributed to the CCM responsible for the "charter or similar arrangements" since the flag state CCM has yet to advise that it has excluded these catches from their data (and thereby avoid double-counting).
4. Purse-seine days for Indonesia and the Philippines in domestic waters have been estimated according to Appendix A in the SC4 Statistics SWG Working paper WP-4 (Data relating to purse-seine effort on the high seas and in the zones of non-PNA member CCMs). The estimates exclude archipelagic waters (AW) effort.
5. The definition of days effort in this table may differ from the definition of days used in the PNA Vessel Day Scheme (VDS)
6. The Total International waters effort prior to 2013 does not include estimates of effort for the Philippines domestic fleet at this stage.
7. Since 2011, some components of the tropical purse seine fleet have changed criteria for reporting days with searching (included as a fishing day) and transiting (not included as a fishing day) and this is reflected in the decline in fishing days since 2011.
8. Philippines effort in the high seas pocket 1 during 2013 was 1,352 sets with an estimated 1 set per three days to produce an estimate of 4,056 days effort.
9. Coastal States within the Convention Area either north of 20°N or south of 20°S. CMM 2014-01/CMM 2015-01 references: Para. 22 and footnote 6 on Page 7 -- relevant for 2014 onwards.
10. Operational data for Japan EEZ are not available. Japan effort in their EEZ for years 2001-2007 was determined as the best estimate from their aggregate data. Japan effort for since 2008 in their EEZ has been provided by Japan in their submission of Annual effort by EEZ/high seas areas.
11. International waters covers high seas in the WCPFC Conventional Area covering the area 20°N-20°S (valid for CMM 2014-01, CMM 2015-01, CMM 2017-01, CMM 2018-01, CMM 2020-01 and CMM 2021-01).
12. CMM 2014-01 or its replacement CMM -- Para. 20. for 2014 -2018 "Coastal States within the Convention Area that are Parties to the Nauru Agreement (PNA) shall restrict the level of purse seine effort in their EEZs to 2010 levels through the PNA Vessel Days Scheme".
13. CMM 2018-01, CMM 2020-01 and CMM 2021-01 Attachment 1 includes a comment that PNA + Tokelau effort limits are to be managed cooperatively through the PNA Vessel Day Scheme.
14. The Vietnam purse seine fleet are understood to fish outside the WCPFC Convention Area (South China Sea).
15. CMM 2018-01, CMM 2020-01 and CMM 2021-01 Table 1 provide the EEZ purse seine effort limits (CMM 2018-01 *or its replacement measure* paragraph 25)
16. ESTIMATED EEZ LIMIT --2015: Scientific estimates of catches and effort in Indonesia EEZ were recently revised to reflect distribution of catches between AW vs EEZ. Indonesia is yet to nominate a limit for purse seine effort in their EEZ in accordance with para 23 of CMM 2015-01. SPC advice as at 20 July 2014 (Table 1) – average of estimated EEZ fishing days effort in 2001-2004 is 507 days. CMM 2021-01 Table 1 says Indonesia's limit is 70,820 mt.
17. ESTIMATED EEZ LIMIT --2015: Scientific estimates of catches and effort in Philippines EEZ were recently revised to reflect distribution of catches between AW vs EEZ. SPC advice as at 20 July 2014 (Table 1) – average of estimated EEZ fishing days effort in 2001-2004 is 925 days. CMM 2018-01, CMM 2020-01 and CMM 2021-01 Table 1 says Philippines's limit is yet to be notified to the Commission. In December 2019, the Philippines advised its EEZ limit was set at 42,000 fishing vessel days in lieu of the original submission, based on the current capacities and conditions of the small purse seine fishing vessels operating in the Philippines Pacific seaboard EEZ. These include wooden hulled ring net/purse seine fishing vessels (WCPFC16-2019-DP25).
18. CMM 2018-01, CMM 2020-01 and CMM 2021-01 Attachment 1 Table 1 indicates that the limit is yet to be notified to the Commission (Republic of Korea, Chinese Taipei, Philippines, Wallis and Futuna).

**Table 2. Purse seine days fished in the high seas in the WCPFC-CA between 20°N and 20°S, by flag.**

Table 2. Purse seine days fished in international waters in the WCPFC-CA between 20°N and 20°S, by flag, based on available operational data.

PURSE SEINE DAYS FISHED INTERNATIONAL WATERS 20°N-20°S																								CMM limits for 2022	CMM limits for 2023	Max. Annual days for 2010- 2012	See Notes		
Flag	2001	2002	2003	2004	2005	2006	2007	2008	2009	2010	2011	2012	2013	2014	2015	2016	2017	2018	2019	2020	2021	2022	2023						
CHINA	89	123	152	424	501	229	332	251	871	14	7	26	14	8	22	23	12	26	22	17	24	21	25	26	26	26	11		
COOK ISLANDS	0	0	0	0	0	0	0	0	0	0	0	0	0	0	0	0	0	0	72	29	185	222	117						
ECUADOR	0	0	0	0	0	0	2.6	10	14	2	0	13	1	1	0	0	0	0	0	0	0	0	0	0	**	**	13	7, 9,	
EL SALVADOR	3	28	0	0	0	0	205	205	80	46	33	32	24	50	54	25	12	28	10	30	27	27	20		**	**	46	7, 9	
EUROPEAN UNION	0	11	14	51	29	81	240	281	254	326	314	429	371	377	248	87	174	158	146	194	226	214	236		403	403	429	7	
FSM	241	242	174	384	212	83	162	128	331	7	3	11	6	10	469	379	600	619	1,041	844	945	421	761						
INDONESIA	500	500	500	500	500	500	500	500	500	0	0	0	0	0	0	0	0	0	0	0	0	0	0	0	(0)	(0)			
JAPAN	1,350	1,260	1,752	1,854	1,757	1,473	1,342	1,068	1,592	6	3	1	14	8	102	22	0	6	32	21	76	0	3		121	121	6		
KIRIBATI	42	56	41	39	51	52	23	41	172	97	243	183	186	858	645	927	687	795	950	666	587	296	1,160						11
MARSHALL ISLANDS	168	208	441	397	402	155	170	283	169	68	30	1	5	6	845	393	626	302	955	697	388	177	486						
NAURU	0	0	0	0	0	0	0	0	0	0	0	0	0	0	0	0	0	106	182	397	114	156	657						
NEW ZEALAND	23	222	334	145	97	288	187	193	194	55	29	89	10	44	158	155	123	120	136	63	0	0	0		160	160			10
PAPUA NEW GUINEA	397	604	660	1,218	1,313	458	861	710	824	79	22	40	16	36	1,090	98	20	11	0	4	1	2	0						
PHILIPPINES	30	79	482	473	350	166	33	98	20	2	0	209	4,096	2,665	2,437	2,642	2,696	2,749	2,654	2,635	2,539	2,562	1,962		4,659	4,659			4, 5
REPUBLIC OF KOREA	1,267	1,278	1,144	1,222	1,048	708	1,352	1,474	1,677	205	49	19	23	192	169	197	184	198	182	177	104	48	249		207	207	205		
SOLOMON ISLANDS	32	37	0	0	17	15	5	0	0	0	0	1	0	0	0	25	73	102	91	20	1	0	28						
TUVALU	0	0	0	0	0	0	0	0	38	4	4	1	0	1	85	147	103	57	71	127	277	61	331						
CHINESE TAIPEI	1,961	1,849	1,466	1,846	1,226	1,225	1,477	1,325	1,421	76	83	20	75	44	93	95	108	62	84	62	68	59	102		95	95	83		7, 12
USA	984	1,315	887	1,007	765	531	793	1,534	1,734	397	569	1,237	1,016	1,152	1,665	917	831	1,551	1,485	1,658	721	706	973		1,270	1,270	1,237		7, 13
VANUATU	66	165	186	571	374	398	381	223	103	37	31	6	7	2	0	163	190	107	145	132	133	108	323						
<b>TOTAL</b>	<b>7,153</b>	<b>7,977</b>	<b>8,233</b>	<b>10,131</b>	<b>8,642</b>	<b>6,362</b>	<b>8,089</b>	<b>8,324</b>	<b>9,994</b>	<b>1,421</b>	<b>1,420</b>	<b>2,318</b>	<b>5,864</b>	<b>5,454</b>	<b>8,082</b>	<b>6,295</b>	<b>6,439</b>	<b>6,997</b>	<b>8,258</b>	<b>7,773</b>	<b>6,416</b>	<b>5,080</b>	<b>7,433</b>						

PURSE SEINE DAYS FISHED in WCPFC-IATTC OVERLAP AREA																								CMM limits for 2022	CMM limits for 2023	Max. Annual days for 2010- 2012	See Notes		
Flag	2001	2002	2003	2004	2005	2006	2007	2008	2009	2010	2011	2012	2013	2014	2015	2016	2017	2018	2019	2020	2021	2022	2023						
ECUADOR	0	0	0	0	0	0	43	176	77	52	40	86	106	72	101	5	109	254	124	142	141	214	64						7
EL SALVADOR	22	35	3	0	0	0	27	130	25	19	22	4	127	155	44	72	37	26	24	21	29	16	40						7
EUROPEAN UNION	126	75	91	52	43	116	34	30	13	16	18	11	36	18	71	39	13	41	15	28	47	60	100						7
USA	1	0	0	0	2	0	0	0	3	0	2	4	0	1	0	528	11	36	58	20	74	17	123						7
<b>TOTAL</b>	<b>149</b>	<b>110</b>	<b>94</b>	<b>52</b>	<b>45</b>	<b>116</b>	<b>104</b>	<b>336</b>	<b>118</b>	<b>87</b>	<b>82</b>	<b>105</b>	<b>269</b>	<b>246</b>	<b>216</b>	<b>644</b>	<b>170</b>	<b>357</b>	<b>221</b>	<b>211</b>	<b>291</b>	<b>307</b>	<b>327</b>						

**Notes:**

1. Source: Raised logsheet data.
2. Catches and effort of vessels operating under charters and similar arrangements have been attributed to host island states or territories in accordance with paragraph 2 of CMM 2008-01 (paragraph 5 of CMM 2012-01, paragraph 5 of CMM 2013-01 or its replacement CMM) using the best information available to SPC-OFP. However, in several cases, catches have not yet been attributed to the CCM responsible for the "charter or similar arrangements" since the flag state CCM has yet to advise that it has excluded these catches from their data (and thereby avoid double-counting). Under CMM 2017-01 paragraph 8 Charter provisions are not applicable to high seas purse seine effort attribution.
3. Purse-seine days for Indonesia have been arbitrarily assigned 500 days for high seas according to Appendix A in the SC4 Statistics SWG Working paper WP-4 (Data relating to purse-seine effort on the high seas and in the zones of non-PNA member CCMs)
4. The measures that the Philippines will take are in Attachment C of CMM 2014-01 (or its replacement CMM) for years from 2014 onwards. Attachment C para 10 describes two limits: 1) total number of catcher vessels fishing in HSP-SMA is limited to 36, and 2) an effort limit in vessel days of 4,659 days (ref Table 2(b) WCPFC9-2012-IP09\_rev3)
5. The Total International waters effort prior to 2012 does not include estimates of effort for the Philippines domestic fleet at this stage. Philippines effort in the high seas pocket 1 (HSP#1) during 2012 was 209 days for the period Oct-Dec based on observer data. Philippines effort in the high seas pocket 1 (HSP#1) during 2013 was 1,352 sets with an estimated 1 set per three days to produce an estimate of 4,056 days effort. Philippines effort in the high seas pocket 1 during 2014 was listed as 2,667 days according to the Philippines Annual Report Part 1 produced for SC11. Estimates for HSP#1 since 2015 have been based on observer data with 100% coverage. Estimates include the Philippines ringnet fleet.
6. Since 2011, some components of the tropical purse seine fleet have changed criteria for reporting days with searching (included as a fishing day) and transiting (not included as a fishing day) and this is reflected in the decline in fishing days since 2011.
7. The days presented in Table 2 exclude effort in the overlap area because it takes into account the WCPFC9 decision on the application of measures in the part of the WCPF Convention Area that overlaps with the IATTC Convention Area (WCPFC9 Summary Report paragraph 80). European Union is a WCPFC member who is also an IATTC member, notified WCPFC in April 2013, of their choice of IATTC measures in the overlap area. Given that Ecuador and El Salvador are members of IATTC, the rules of the RFMO of which it is a member apply in the overlap area between WCPFC and IATTC, even if the CCM is a cooperating non-member of the other RFMO. The USA notified WCPFC in November 2021 of their choice of IATTC measures in the overlap area. Total days in Table 2 do not therefore reconcile with total high seas days in Table 1.
8. "CMM limits" are taken from CMM 2014-01 (or its replacement CMM) - Attachments D and apply from 2015 -2017. "CMM limits in 2018" are taken from Attachment 1 Table 2 of CMM 2017-01
9. Subject to CNM on participatory rights, in accordance with paragraph 6 of CMM 2014-01 (or its replacement CMM) for years from 2015 onwards
10. The basis of the CMM 2014-01 (or its replacement CMM) high seas days limit for New Zealand was the average of 2006-2008 effort with an agreed reduction in line with CMM 2013-01 and its predecessor CMMs.
11. For China and Kiribati, the 2015–2016 effort estimates reflect their WCPFC charter notifications for these years. For WCPFC charter notifications, the 2017–2023 high seas effort estimates have been attributed to the flag state for these years, based on the best information available.
12. CMM 2017-01 Att 1 Table 2 specifies a limit of 95 days for Chinese Taipei. However Chinese Taipei has advised they will apply a limit of 80 days in 2018, to take into account the amount the limit was exceeded in 2017. CMM 2018-01 Att 1 Table 2 specifies a limit of 95 days for Chinese Taipei for 2019.
13. A high seas purse seine effort limit may be adjusted in accordance with para 30 of CMM 2017-01, CMM 2018-01, CMM 2020-01 and CMM 2021-01.

**Table 3. Estimated FAD sets undertaken in the tropical purse seine fishery, by flag, 2001-2023.**

2001	2002	2003	2004	2005	2006	2007	2008	2009	2010	2011	2012	2013	2014	2015	2016	2017	2018	2019	2020	2021	2022	2023	CCM	
15	139	159	511	861	923	826	1,218	1,603	688	2,013	1,127	1,415	1,428	754	63	502	230	16	0	0	144	534	CHINA	
0	0	0	0	0	0	0	0	0	0	0	0	0	0	0	0	0	0	43	14	63	59	20	COOK ISLANDS	
0	0	0	0	0	0	74	365	163	221	439	443	284	342	140	50	235	411	327	258	270	429	152	ECUADOR	
9	29	1	0	0	0	54	152	161	136	185	212	296	304	176	96	73	82	49	58	93	76	96	EL SALVADOR	
71	34	59	81	46	126	242	412	328	363	488	460	515	430	327	94	151	190	160	211	290	293	286	EUROPEAN UNION	
324	386	489	790	497	282	338	484	732	417	788	820	537	605	633	1,088	1,364	1,348	1,319	2,111	1,796	2,089	1,546	FSM	
?	?	?	?	?	?	?	?	?	?	?	?	?	?	?	?	?	?	?	?	?	?	?	?	INDONESIA
2,320	2,021	2,266	3,162	2,379	2,617	2,437	2,607	2,403	833	1,320	1,619	1,038	1,027	663	887	635	559	303	623	904	811	461	JAPAN	
71	61	62	96	103	66	61	99	288	243	552	488	667	822	1,075	1,819	2,551	2,998	3,019	2,784	3,198	3,484	4,373	KIRIBATI	
392	578	876	1,064	934	741	854	469	596	630	1,544	1,386	1,165	1,212	1,048	670	1,317	1,226	1,108	1,051	1,566	1,640	1,232	MARSHALL ISLANDS	
0	0	0	0	0	0	0	0	0	0	0	0	0	0	0	0	0	90	256	1,075	1,596	1,679	1,480	NAURU	
124	274	429	411	195	491	384	441	373	193	202	163	134	164	43	21	76	41	36	2	0	0	0	NEW ZEALAND	
738	1,246	1,086	2,705	2,078	2,079	1,649	1,377	1,682	973	1,284	1,761	1,349	1,680	1,224	1,942	1,721	1,720	1,053	346	496	271	281	PAPUA NEW GUINEA	
998	1,073	1,064	918	1,002	779	239	510	557	380	404	595	521	384	350	261	23	55	2	0	0	0	8	PHILIPPINES (distant-water)	
?	?	?	?	?	?	?	?	?	?	?	?	?	?	?	?	?	?	?	?	?	?	?	?	PHILIPPINES (domestic)
551	1,220	708	2,519	891	2,297	1,868	1,959	2,133	1,097	2,116	1,421	1,167	1,091	1,529	1,582	1,878	2,390	1,801	1,499	1,695	1,537	1,128	REPUBLIC OF KOREA	
150	118	100	88	109	252	130	86	173	80	146	191	134	99	107	234	352	440	329	119	101	349	450	SOLOMON ISLANDS	
1,616	2,621	1,839	3,215	2,737	3,050	2,813	2,285	2,723	1,703	2,941	2,925	2,628	2,639	1,780	1,499	1,895	2,277	2,024	1,867	2,183	2,484	1,702	CHINESE TAIPEI	
0	0	0	0	0	0	0	0	20	40	58	92	78	49	36	59	59	107	83	119	359	476	411	TUVALU	
2,021	1,772	1,557	2,067	1,315	1,543	1,393	2,756	3,800	2,384	3,388	3,432	3,132	3,696	2,026	2,125	2,437	2,910	1,890	1,725	1,221	1,030	1,168	USA	
36	143	181	655	528	467	632	230	389	169	391	261	260	229	123	37	123	95	136	331	450	551	362	VANUATU	
9,436	11,715	10,876	18,282	13,675	15,713	13,994	15,450	18,124	10,550	18,259	17,396	15,320	16,201	12,034	12,527	15,392	17,169	13,954	14,193	16,281	17,402	15,690		

## Notes

1. Source: Raised logsheet data.
2. Covers Drifting FAD, Log and Anchored FAD sets in the tropical purse seine fishery of the WCPFC Convention Area (20°N-20°S), by flag
3. Excludes archipelagic waters. Fleets from Indonesia, Kiribati, Papua New Guinea, Philippines (DW), Philippines (domestic) and Solomon Islands in this list are normally the only fleets active in archipelagic waters.
4. Includes high seas
5. Excludes Vietnam domestic fleet
6. Complete information from Indonesia and Philippines domestic fisheries are not available.
7. CMM 2015-01 – Paras. 14 and 17, and ATTACHMENT A, provides information on the 2016 FAD set limits that applies to FSM, Japan, Kiribati, Korea and United States of America.
8. CMM 2016-01 – Paras. 14 and 17, and ATTACHMENT A, provides information on the 2017 FAD set limits that applies to Japan, Korea and United States of America.
9. CMM 2014-01 – Paras. 14 and 17, and ATTACHMENT A, provides information on the 2015 FAD set limits that applies to FSM, Japan, Kiribati and Korea.
10. CMM 2013-01, Para 16 (ii) annual limit of FAD sets for 2015 (as set out in Column 'A' of Attachment A of CMM 2014-01) applies to FSM, Japan, Kiribati and Korea
11. Annual FAD sets consider CMM 2014-01 (or its replacement CMM) footnote 3 notifications (vessels that are managed outside of FAD set limit). This exemption applied to certain Kiribati vessels for 2016-2017.
12. In 2016, FSM applied CMM 2014-01 footnote 3 notifications, but formally chose the 4<sup>th</sup> month FAD closure for 2017.
13. The estimates of FAD sets for Kiribati and China reflect their respective WCPFC charter notifications since 2016.
14. This table does not include FAD sets for the exemptions under CMM 2014-01 (see Notes 11, 12 and 13)
15. "CMM 2016-01 – Adjusted Baseline", applies to Kiribati in 2017. The adjusted baseline includes average annual FAD sets for Kiribati vessels that were previously exempt prior to 2017 (due to being newly-introduced since 2012) that had operated for three years prior to 2017.
16. Annual FAD sets count does include CMM 2017-01 (footnote 2) and CMM 2018-01, CMM 2020-01 AND CMM 2021-01 (footnote 1) FAD Sets of domestic purse seine vessels of PNA countries which are notified as being managed under the PNA 3IA while operating in that PNA CCMs national waters during the 3-month FAD closure period of July – September of a particular notified year.
17. Figure 11 includes the respective exemptions described in Note 14 and 16.



**Table 4. Tropical purse seine tuna catch and effort by set type and species in the WCPFC Convention Area.**

FLEET	YEAR	VESSELS		DAYS	UNASSOCIATED SCHOOLS								ASSOCIATED SCHOOLS								TOTAL				
		YB	LOG		SKIPJACK			YELLOWFIN		BIGEYE		TOTAL	SKIPJACK			YELLOWFIN		BIGEYE		TOTAL	SETS	SKJ	YFT	BET	TOTAL
					SETS	MT	%	MT	%	MT	%	MT	SETS	MT	%	MT	%	MT							
CK	2019	1	1	73	18	424	94%	24	5%	4	1%	453	43	1,287	75%	123	7%	306	18%	1,716	61	1,712	147	310	2,169
CK	2020	1	1	29	0	0	0%	0	0%	0	0%	0	14	257	74%	43	12%	49	14%	349	14	257	43	49	349
CK	2021	1	1	185	34	917	87%	127	12%	15	1%	1,059	63	2,014	74%	237	9%	461	17%	2,712	97	2,931	364	476	3,771
CK	2022	1	1	227	66	1,732	95%	81	4%	17	1%	1,830	59	1,921	68%	259	9%	637	23%	2,817	125	3,653	340	654	4,647
CK	2023	2	2	125	94	989	61%	606	38%	19	1%	1,613	20	1,234	80%	120	8%	189	12%	1,543	114	2,222	725	208	3,156
CN	2010	12	10	2,784	2,095	20,857	72%	7,998	28%	176	1%	29,031	692	17,607	72%	5,521	23%	1,401	6%	24,529	2,788	38,537	13,595	1,582	53,714
CN	2011	12	10	4,019	1,396	10,977	72%	4,163	27%	178	1%	15,318	2,023	47,312	76%	11,049	18%	3,862	6%	62,223	3,419	58,289	15,212	4,040	77,541
CN	2012	13	12	2,205	706	10,680	77%	3,166	23%	56	0%	13,902	1,143	27,715	79%	5,266	15%	2,264	6%	35,245	1,849	38,395	8,433	2,320	49,147
CN	2013	14	13	3,617	2,329	28,223	92%	2,300	8%	217	1%	30,740	1,419	37,022	73%	10,701	21%	3,042	6%	50,765	3,750	65,454	13,091	3,284	81,828
CN	2014	19	18	3,012	1,351	16,657	87%	2,241	12%	167	1%	19,065	1,430	42,659	75%	10,449	18%	3,550	6%	56,659	2,781	59,317	12,690	3,717	75,724
CN	2015	20	16	2,007	897	11,239	71%	4,433	28%	219	1%	15,892	756	20,306	74%	4,963	18%	2,076	8%	27,344	1,653	31,545	9,396	2,295	43,236
CN	2016	2	6	504	401	6,270	76%	2,002	24%	11	0%	8,283	140	2,834	72%	950	24%	146	4%	3,931	544	9,169	2,984	158	12,311
CN	2017	3	2	761	84	452	85%	51	10%	26	5%	529	502	10,704	72%	3,480	23%	761	5%	14,945	586	11,155	3,531	788	15,474
CN	2018	3	2	608	336	4,793	86%	774	14%	32	1%	5,599	231	7,387	80%	1,315	14%	523	6%	9,224	567	12,180	2,089	554	14,823
CN	2019	0	0	18	5	154	96%	6	4%	0	0%	160	16	535	63%	168	20%	148	17%	850	21	689	173	148	1,010
CN	2020	0	0	0	0	0	0%	0	0%	0	0%	0	0	0	0%	0	0%	0	0%	0	0	0	0	0	0
CN	2021	0	0	0	0	0	0%	0	0%	0	0%	0	0	0	0%	0	0%	0	0%	0	0	0	0	0	0
CN	2022	1	1	240	68	1,389	92%	121	8%	4	0%	1,515	145	5,865	82%	943	13%	370	5%	7,177	213	7,254	1,064	374	8,692
CN	2023	3	6	879	258	3,685	70%	1,554	30%	33	1%	5,271	535	19,825	84%	2,709	12%	1,081	5%	23,616	793	23,510	4,263	1,114	28,887
EC	2010	14	6	319	21	48	27%	108	62%	19	11%	175	233	6,231	56%	2,701	24%	2,214	20%	11,145	254	6,279	2,808	2,233	11,320
EC	2011	8	7	556	41	214	25%	518	61%	120	14%	851	447	16,994	60%	4,961	18%	6,378	23%	28,333	488	17,208	5,478	6,498	29,184
EC	2012	8	7	605	17	486	85%	57	10%	32	6%	575	444	14,401	64%	3,095	14%	5,074	23%	22,570	461	14,887	3,152	5,106	23,145
EC	2013	7	7	480	70	1,805	81%	286	13%	146	7%	2,236	292	13,591	71%	2,120	11%	3,495	18%	19,206	362	15,395	2,406	3,641	21,442
EC	2014	7	7	477	57	1,168	90%	68	5%	61	5%	1,297	359	14,097	69%	2,917	14%	3,457	17%	20,472	416	15,265	2,985	3,519	21,769
EC	2015	7	4	162	1	0	0%	0	0%	0	0%	0	150	8,345	71%	1,570	13%	1,844	16%	11,759	151	8,345	1,570	1,844	11,759
EC	2016	2	3	42	0	0	0%	0	0%	0	0%	0	50	2,665	68%	630	16%	630	16%	3,925	50	2,665	630	630	3,925
EC	2017	4	4	237	2	63	62%	17	17%	21	21%	102	235	8,730	65%	1,548	12%	3,191	24%	13,469	237	8,794	1,566	3,212	13,571
EC	2018	4	4	441	12	106	82%	0	0%	24	19%	130	412	16,468	74%	1,627	7%	4,220	19%	22,315	424	16,574	1,628	4,244	22,445
EC	2019	8	5	374	9	107	19%	409	71%	62	11%	578	327	18,715	76%	2,349	10%	3,493	14%	24,557	336	18,821	2,759	3,555	25,135
EC	2020	4	4	279	3	47	98%	0	0%	1	2%	48	261	9,433	67%	1,903	14%	2,775	20%	14,111	264	9,480	1,903	2,776	14,159
EC	2021	5	5	304	5	118	86%	10	7%	9	7%	137	271	9,753	61%	2,566	16%	3,775	24%	16,094	276	9,872	2,576	3,784	16,231
EC	2022	5	5	478	6	72	96%	1	1%	3	4%	75	431	11,902	56%	3,728	18%	5,530	26%	21,160	436	11,974	3,728	5,533	21,235
EC	2023	8	4	160	5	76	97%	1	1%	1	1%	78	154	10,983	74%	1,428	10%	2,422	16%	14,833	159	11,059	1,429	2,423	14,911
ES	2010	4	4	720	26	625	76%	195	24%	0	0%	820	364	18,823	66%	5,462	19%	4,364	15%	28,648	390	19,448	5,656	4,364	29,468
ES	2011	4	4	753	30	649	49%	667	50%	18	1%	1,334	488	24,123	63%	7,084	19%	6,910	18%	38,117	518	24,772	7,751	6,927	39,451
ES	2012	4	4	787	57	2,374	86%	385	14%	9	0%	2,767	461	18,469	63%	4,808	16%	6,126	21%	29,403	517	20,843	5,193	6,134	32,170
ES	2013	4	4	837	56	1,985	66%	1,032	34%	10	0%	3,026	515	27,969	65%	7,559	18%	7,613	18%	43,141	571	29,954	8,591	7,623	46,167
ES	2014	4	4	753	89	3,367	80%	843	20%	3	0%	4,213	431	25,232	70%	4,376	12%	6,639	18%	36,247	520	28,599	5,219	6,641	40,460
ES	2015	4	4	529	28	1,327	97%	39	3%	1	0%	1,368	326	23,946	75%	4,553	14%	3,342	11%	31,840	355	25,273	4,592	3,343	33,208
ES	2016	2	2	130	1	0	0%	0	0%	0	0%	0	94	6,304	73%	563	7%	1,833	21%	8,699	95	6,304	563	1,833	8,699
ES	2017	2	2	210	0	0	0%	0	0%	0	0%	0	151	7,766	66%	713	6%	3,245	28%	11,724	151	7,766	713	3,245	11,724
ES	2018	2	2	266	4	96	100%	0	0%	0	0%	96	190	7,731	75%	959	9%	1,642	16%	10,332	194	7,826	959	1,642	10,428
ES	2019	2	2	221	0	0	0%	0	0%	0	0%	0	160	7,892	79%	1,162	12%	880	9%	9,934	160	7,892	1,162	880	9,934
ES	2020	2	2	264	3	1	100%	0	0%	0	0%	1	215	7,439	69%	1,814	17%	1,501	14%	10,754	218	7,440	1,814	1,501	10,755
ES	2021	3	3	284	9	384	69%	172	31%	4	1%	560	290	8,199	64%	2,048	16%	2,539	20%	12,786	299	8,583	2,220	2,542	13,346
ES	2022	3	3	286	7	155	62%	94	38%	1	0%	250	293	10,336	60%	3,134	18%	3,857	22%	17,328	300	10,491	3,228	3,858	17,578
ES	2023	4	4	353	69	944	51%	896	49%	0	0%	1,839	288	17,732	84%	1,538	7%	1,959	9%	21,229	357	18,675	2,434	1,959	23,068

Table 4. (continued)

FLEET	YEAR	VESSELS		DAYS	UNASSOCIATED SCHOOLS								ASSOCIATED SCHOOLS								TOTAL				
		YB	LOG		SKIPJACK			YELLOWFIN		BIGEYE		TOTAL	SKIPJACK			YELLOWFIN		BIGEYE		TOTAL	SETS	SKJ	YFT	BET	TOTAL
					SETS	MT	%	MT	%	MT	%	MT	SETS	MT	%	MT	%	MT	%	MT	SETS	MT	MT	MT	MT
FM	2010	7	8	1,305	612	8,472	80%	2,111	20%	62	1%	10,645	419	10,724	76%	2,304	16%	1,050	8%	14,078	1,031	19,196	4,415	1,112	24,723
FM	2011	7	7	1,641	483	5,960	78%	1,682	22%	19	0%	7,661	790	13,496	72%	4,215	22%	1,121	6%	18,832	1,276	19,463	5,901	1,141	26,505
FM	2012	9	9	1,573	464	6,562	78%	1,761	21%	109	1%	8,432	826	21,408	78%	4,367	16%	1,760	6%	27,535	1,301	28,178	6,171	1,884	36,233
FM	2013	10	10	1,384	450	9,033	87%	1,274	12%	113	1%	10,420	539	12,588	72%	3,564	20%	1,311	8%	17,464	989	21,621	4,838	1,425	27,884
FM	2014	10	10	1,414	611	13,092	85%	2,021	13%	315	2%	15,429	614	16,439	73%	4,361	19%	1,847	8%	22,646	1,225	29,531	6,382	2,162	38,075
FM	2015	12	13	1,924	1,212	26,333	84%	4,710	15%	430	1%	31,473	641	18,608	77%	3,930	16%	1,732	7%	24,270	1,852	44,941	8,640	2,162	55,743
FM	2016	16	18	2,726	1,059	22,170	82%	4,496	17%	317	1%	26,983	1,142	34,898	78%	6,385	14%	3,444	8%	44,728	2,201	57,068	10,882	3,761	71,711
FM	2017	19	20	3,527	1,919	34,199	78%	9,273	21%	301	1%	43,774	1,374	31,581	76%	7,257	17%	2,995	7%	41,833	3,300	65,906	16,552	3,307	85,765
FM	2018	22	22	3,730	2,412	47,534	81%	10,346	18%	642	1%	58,522	1,432	50,205	83%	7,901	13%	2,376	4%	60,482	3,846	97,764	18,257	3,018	119,039
FM	2019	23	25	4,464	3,749	83,753	82%	17,358	17%	1,531	2%	102,641	1,348	44,234	78%	9,000	16%	3,226	6%	56,460	5,104	128,124	26,383	4,763	159,269
FM	2020	27	27	5,252	3,030	64,742	81%	14,550	18%	607	1%	79,899	2,120	73,871	75%	17,928	18%	6,202	6%	98,001	5,154	138,615	32,479	6,810	177,903
FM	2021	28	28	4,918	2,763	52,232	78%	14,234	21%	519	1%	66,985	1,815	63,415	76%	14,386	17%	5,532	7%	83,333	4,579	115,647	28,619	6,051	150,318
FM	2022	25	25	4,592	3,029	55,945	82%	11,458	17%	461	1%	67,864	2,098	72,042	76%	16,474	17%	6,032	6%	94,547	5,127	127,987	27,932	6,493	162,412
FM	2023	27	27	4,702	3,648	59,279	72%	22,682	28%	334	0%	82,295	1,563	55,637	86%	6,717	10%	2,549	4%	64,902	5,210	114,916	29,399	2,883	147,197
JP	2010	37	36	5,695	5,633	135,175	81%	31,133	19%	1,538	1%	167,845	833	25,590	70%	8,297	23%	2,446	7%	36,333	6,566	162,728	40,477	4,161	207,366
JP	2011	40	37	6,524	5,956	92,468	78%	25,999	22%	590	1%	119,057	1,320	39,395	77%	7,650	15%	4,203	8%	51,248	7,306	132,385	33,727	4,823	170,935
JP	2012	41	36	5,448	4,867	103,369	84%	18,105	15%	1,506	1%	122,980	1,619	58,842	80%	10,056	14%	4,525	6%	73,423	6,514	162,490	28,221	6,050	196,761
JP	2013	41	33	5,501	4,759	104,274	87%	14,410	12%	1,544	1%	120,228	1,038	42,189	79%	7,520	14%	3,704	7%	53,413	5,834	147,165	22,133	5,297	174,595
JP	2014	40	32	4,898	4,275	88,995	76%	25,849	22%	2,132	2%	116,975	1,027	38,015	79%	6,631	14%	3,343	7%	47,989	5,342	128,411	32,786	5,555	166,752
JP	2015	40	31	4,195	3,380	87,016	74%	26,698	23%	3,313	3%	117,028	663	19,523	68%	6,193	22%	2,890	10%	28,606	4,169	109,751	34,233	6,766	150,750
JP	2016	37	29	5,002	4,170	82,531	75%	25,222	23%	1,832	2%	109,585	887	24,613	69%	7,655	22%	3,280	9%	35,548	5,136	108,945	33,737	5,315	147,997
JP	2017	38	29	4,692	3,892	76,272	70%	31,379	29%	2,124	2%	109,774	635	19,827	75%	4,932	19%	1,729	7%	26,488	4,650	98,837	37,546	4,128	140,510
JP	2018	34	26	4,067	3,706	95,693	75%	27,922	22%	3,505	3%	127,120	559	20,956	73%	5,804	20%	1,785	6%	28,545	4,420	120,057	35,446	5,990	161,492
JP	2019	36	28	4,254	4,479	105,059	77%	29,647	22%	1,803	1%	136,508	303	10,198	76%	2,521	19%	740	6%	13,458	4,975	119,700	34,253	3,000	156,953
JP	2020	37	28	4,872	4,433	87,287	77%	24,561	22%	1,005	1%	112,853	626	18,344	68%	5,991	22%	2,531	9%	26,867	5,154	107,316	31,839	3,804	142,958
JP	2021	36	31	4,470	3,642	75,493	77%	20,947	22%	1,049	1%	97,489	904	24,378	71%	7,217	21%	2,735	8%	34,330	4,558	100,365	28,356	3,798	132,519
JP	2022	38	29	4,288	4,091	82,571	81%	17,959	18%	935	1%	101,465	811	25,593	74%	6,530	19%	2,497	7%	34,620	4,917	108,412	24,627	3,501	136,539
JP	2023	38	27	3,887	3,518	83,092	77%	22,874	21%	1,326	1%	107,292	461	14,109	73%	3,655	19%	1,487	8%	19,251	4,027	98,323	26,917	2,870	128,109
KI	2010	5	4	693	465	6,962	74%	2,373	25%	61	1%	9,396	245	11,083	71%	2,690	17%	1,917	12%	15,690	741	18,577	5,174	1,994	25,745
KI	2011	7	7	1,429	785	9,588	73%	3,616	27%	28	0%	13,232	554	24,300	73%	4,392	13%	4,498	14%	33,190	1,347	33,937	8,036	4,541	46,514
KI	2012	9	9	1,851	1,593	30,331	80%	7,669	20%	165	0%	38,164	492	19,606	82%	2,972	12%	1,463	6%	24,041	2,093	50,101	10,699	1,632	62,432
KI	2013	12	12	2,007	1,443	27,791	84%	5,247	16%	221	1%	33,259	669	30,368	78%	5,729	15%	2,885	7%	38,982	2,113	58,159	10,976	3,106	72,241
KI	2014	14	15	2,818	2,188	42,383	72%	16,209	28%	319	1%	58,912	830	40,606	81%	5,274	11%	4,383	9%	50,263	3,018	82,989	21,483	4,702	109,174
KI	2015	21	20	2,884	2,482	60,917	85%	9,852	14%	535	1%	71,304	1,082	57,017	87%	6,041	9%	2,335	4%	65,393	3,564	117,935	15,894	2,869	136,698
KI	2016	27	23	4,513	2,428	50,876	80%	11,979	19%	636	1%	63,491	1,871	81,186	80%	12,050	12%	8,253	8%	101,490	4,299	132,065	24,031	8,890	164,985
KI	2017	19	21	4,653	1,815	29,611	73%	10,915	27%	253	1%	40,780	2,554	93,417	83%	12,858	11%	6,549	6%	112,824	4,369	123,056	23,775	6,803	153,634
KI	2018	21	21	4,451	1,548	34,182	81%	7,957	19%	305	1%	42,444	3,004	119,848	82%	16,833	12%	10,154	7%	146,835	4,554	154,177	24,794	10,460	189,431
KI	2019	22	25	5,158	2,625	61,088	89%	7,189	11%	265	0%	68,541	3,036	133,792	84%	19,167	12%	6,089	4%	159,049	5,668	195,042	26,379	6,360	227,781
KI	2020	25	23	4,981	1,499	37,929	86%	5,580	13%	384	1%	43,893	2,792	123,215	79%	23,385	15%	9,883	6%	156,482	4,290	161,143	28,965	10,267	200,375
KI	2021	26	27	5,532	1,586	34,961	79%	8,898	20%	278	1%	44,137	3,201	110,323	80%	19,591	14%	8,818	6%	138,732	4,787	145,284	28,489	9,096	182,869
KI	2022	24	29	5,713	1,349	30,833	84%	5,624	15%	185	1%	36,642	3,489	129,237	83%	17,627	11%	8,664	6%	155,528	4,838	160,069	23,252	8,849	192,170
KI	2023	30	29	7,022	1,582	25,321	63%	14,374	36%	212	1%	39,908	4,380	154,306	84%	19,482	11%	9,646	5%	183,434	5,963	179,714	33,869	9,864	223,446

Table 4. (continued)

FLEET	YEAR	VESSELS		DAYS	UNASSOCIATED SCHOOLS								ASSOCIATED SCHOOLS								TOTAL				
		YB	LOG		SKIPJACK			YELLOWFIN		BIGEYE		TOTAL	SKIPJACK			YELLOWFIN		BIGEYE		TOTAL	SETS	SKJ	YFT	BET	TOTAL
					SETS	MT	%	MT	%	MT	%	MT	SETS	MT	%	MT	%	MT	%	MT	SETS	MT	YFT	MT	MT
KR	2010	29	28	7,178	6,308	143,777	70%	58,967	29%	2,283	1%	205,027	1,117	55,030	76%	10,977	15%	6,198	9%	72,206	7,433	198,862	69,964	8,487	277,313
KR	2011	28	28	6,552	4,493	79,329	73%	29,255	27%	817	1%	109,401	2,128	74,515	76%	16,646	17%	6,945	7%	98,106	6,627	153,976	45,944	7,781	207,702
KR	2012	28	28	5,836	6,099	137,169	74%	47,400	26%	1,296	1%	185,865	1,433	63,704	84%	9,916	13%	2,706	4%	76,326	7,534	200,872	57,317	4,002	262,191
KR	2013	27	28	5,983	6,068	131,373	81%	29,743	18%	2,076	1%	163,192	1,171	47,813	77%	10,635	17%	3,991	6%	62,439	7,239	179,186	40,378	6,067	225,631
KR	2014	28	29	5,437	5,820	155,975	78%	43,164	22%	1,083	1%	200,221	1,097	59,588	85%	6,810	10%	3,428	5%	69,827	6,917	215,563	49,974	4,511	270,048
KR	2015	25	26	4,664	4,561	126,474	80%	29,118	19%	1,702	1%	157,294	1,534	97,811	88%	9,328	8%	3,814	3%	110,953	6,094	224,286	38,447	5,515	268,248
KR	2016	25	25	4,755	4,260	132,284	78%	35,430	21%	1,600	1%	169,313	1,590	93,860	86%	9,613	9%	5,665	5%	109,139	5,851	226,144	45,043	7,265	278,452
KR	2017	26	26	5,545	4,898	99,995	69%	44,205	31%	890	1%	145,090	1,881	85,171	84%	11,410	11%	5,158	5%	101,739	6,782	185,166	55,615	6,048	246,829
KR	2018	27	25	5,645	4,383	105,074	78%	27,408	21%	1,533	1%	134,016	2,395	115,485	87%	10,692	8%	7,357	6%	133,533	6,777	220,559	38,100	8,890	267,549
KR	2019	26	26	5,668	5,795	177,517	86%	27,996	14%	988	1%	206,500	1,811	96,547	89%	8,138	8%	3,635	3%	108,320	7,608	274,064	36,133	4,624	314,820
KR	2020	27	27	5,881	5,331	131,963	80%	33,255	20%	854	1%	166,072	1,501	70,799	82%	9,990	12%	5,451	6%	86,240	6,833	202,762	43,245	6,305	252,312
KR	2021	23	23	5,129	4,617	109,495	75%	35,848	25%	950	1%	146,293	1,698	67,678	81%	11,601	14%	4,681	6%	83,960	6,315	177,173	47,449	5,631	230,253
KR	2022	22	21	5,024	4,758	113,692	78%	30,349	21%	1,055	1%	145,096	1,541	68,236	83%	10,600	13%	3,886	5%	82,722	6,300	181,928	40,949	4,941	227,818
KR	2023	22	22	5,352	5,252	134,889	79%	35,467	21%	651	0%	171,007	1,134	61,241	86%	5,968	8%	3,646	5%	70,855	6,386	196,130	41,435	4,297	241,862
MH	2010	10	10	1,670	1,228	18,139	73%	6,119	25%	645	3%	24,903	636	25,441	76%	5,248	16%	3,029	9%	33,718	1,881	43,789	11,686	3,688	59,162
MH	2011	10	10	2,521	547	7,991	84%	1,502	16%	68	1%	9,561	1,550	59,516	74%	11,205	14%	9,900	12%	80,622	2,097	67,507	12,708	9,968	90,183
MH	2012	10	10	1,989	748	12,082	74%	4,207	26%	86	1%	16,375	1,394	45,581	80%	7,076	12%	4,562	8%	57,220	2,142	57,663	11,283	4,649	73,595
MH	2013	10	10	2,132	1,075	18,054	90%	1,977	10%	46	0%	20,078	1,167	42,804	74%	9,685	17%	5,006	9%	57,495	2,243	60,901	11,679	5,055	77,635
MH	2014	12	11	2,131	1,127	18,919	88%	2,564	12%	113	1%	21,596	1,219	43,396	80%	7,125	13%	3,779	7%	54,300	2,346	62,315	9,689	3,892	75,896
MH	2015	12	12	2,221	1,857	36,162	95%	1,771	5%	33	0%	37,965	1,061	41,701	85%	5,078	10%	2,126	4%	48,905	2,919	77,862	6,849	2,158	86,870
MH	2016	10	10	1,970	1,305	22,887	82%	5,025	18%	115	0%	28,027	671	26,579	81%	4,356	13%	2,011	6%	32,946	1,976	49,466	9,381	2,126	60,973
MH	2017	10	10	2,152	537	6,818	71%	2,657	28%	78	1%	9,553	1,319	41,984	76%	8,922	16%	4,324	8%	55,231	1,858	48,802	11,580	4,402	64,784
MH	2018	13	13	1,941	787	12,364	87%	1,899	13%	15	0%	14,278	1,228	48,231	82%	7,672	13%	3,189	5%	59,092	2,016	60,617	9,581	3,208	73,406
MH	2019	11	11	2,449	1,701	32,349	79%	8,696	21%	137	0%	41,182	1,108	44,676	82%	7,410	14%	2,296	4%	54,382	2,810	77,041	16,118	2,436	95,595
MH	2020	11	11	2,107	1,070	20,579	90%	2,188	10%	79	0%	22,845	1,053	48,634	80%	8,883	15%	3,335	6%	60,852	2,123	69,212	11,071	3,414	83,697
MH	2021	11	11	2,264	655	10,510	78%	2,923	22%	75	1%	13,508	1,567	63,131	81%	9,878	13%	4,509	6%	77,518	2,222	73,641	12,801	4,584	91,026
MH	2022	11	11	2,119	622	10,598	87%	1,490	12%	47	0%	12,135	1,641	60,649	82%	8,947	12%	4,273	6%	73,869	2,263	71,247	10,437	4,321	86,005
MH	2023	11	11	2,206	1,083	14,308	73%	5,338	27%	20	0%	19,666	1,233	40,415	84%	5,244	11%	2,656	6%	48,314	2,316	54,723	10,582	2,676	67,981
NR	2018	2	2	166	123	1,417	45%	1,712	55%	1	0%	3,130	90	5,254	91%	361	6%	135	2%	5,751	213	6,672	2,073	136	8,881
NR	2019	9	9	744	704	19,679	93%	1,435	7%	89	0%	21,203	258	10,272	87%	1,298	11%	291	3%	11,861	968	30,082	2,769	398	33,249
NR	2020	15	14	2,416	1,817	35,549	83%	6,962	16%	129	0%	42,640	1,079	37,764	74%	10,442	20%	3,199	6%	51,405	2,908	73,817	17,682	3,419	94,919
NR	2021	15	18	2,902	1,864	32,016	73%	11,400	26%	293	1%	43,708	1,596	55,511	73%	16,079	21%	4,794	6%	76,384	3,461	87,527	27,479	5,086	120,092
NR	2022	15	16	2,532	1,519	25,665	81%	5,778	18%	149	1%	31,593	1,687	59,222	78%	12,824	17%	4,058	5%	76,104	3,206	84,887	18,602	4,207	107,697
NR	2023	15	15	2,729	1,693	27,017	75%	9,143	25%	66	0%	36,225	1,495	55,230	83%	7,922	12%	3,557	5%	66,710	3,188	82,247	17,065	3,623	102,935
NZ	2010	4	4	652	425	8,643	97%	197	2%	55	1%	8,895	191	7,114	76%	1,815	19%	480	5%	9,410	617	15,757	2,012	535	18,304
NZ	2011	3	3	474	174	3,369	81%	728	18%	43	1%	4,140	197	5,654	74%	1,703	22%	334	4%	7,690	371	9,023	2,431	377	11,831
NZ	2012	4	4	488	288	5,047	84%	891	15%	109	2%	6,047	165	3,595	77%	790	17%	300	6%	4,685	453	8,642	1,681	409	10,732
NZ	2013	4	4	468	270	5,047	91%	455	8%	28	1%	5,531	134	4,439	74%	1,153	19%	396	7%	5,987	404	9,486	1,608	424	11,518
NZ	2014	5	5	533	304	3,788	77%	955	19%	168	3%	4,911	161	4,283	77%	767	14%	513	9%	5,563	465	8,071	1,722	681	10,474
NZ	2015	2	2	258	316	4,934	93%	264	5%	93	2%	5,291	43	1,838	82%	315	14%	91	4%	2,245	359	6,772	579	185	7,536
NZ	2016	2	2	218	265	3,942	96%	117	3%	47	1%	4,106	21	1,242	79%	286	18%	45	3%	1,573	286	5,183	403	93	5,679
NZ	2017	1	1	126	23	569	81%	134	19%	1	0%	704	75	2,799	85%	376	11%	126	4%	3,301	98	3,368	510	127	4,005
NZ	2018	1	1	119	61	247	20%	967	80%	2	0%	1,216	41	1,551	88%	109	6%	112	6%	1,772	102	1,797	1,076	114	2,987
NZ	2019	1	1	142	91	2,228	94%	135	6%	20	1%	2,384	38	1,425	76%	297	16%	157	8%	1,879	130	3,653	433	177	4,263
NZ	2020	1	1	63	22	1,009	95%	52	5%	7	1%	1,068	2	96	84%	12	10%	7	6%	115	24	1,105	64	14	1,183
NZ	2021	0	0	0	0	0	0%	0	0%	0	0%	0	0	0	0%	0	0%	0	0%	0	0	0	0	0	0
NZ	2022	0	0	0	0	0	0%	0	0%	0	0%	0	0	0	0%	0	0%	0	0%	0	0	0	0	0	0
NZ	2023	0	0	0	0	0	0%	0	0%	0	0%	0	0	0	0%	0	0%	0	0%	0	0	0	0	0	0

Table 4. (continued)

FLEET	YEAR	VESSELS		DAYS	UNASSOCIATED SCHOOLS								ASSOCIATED SCHOOLS								TOTAL				
		YB	LOG		SKIPJACK			YELLOWFIN		BIGEYE		TOTAL	SKIPJACK			YELLOWFIN		BIGEYE		TOTAL	SETS	SKJ	YFT	BET	TOTAL
					SETS	MT	%	MT	%	MT	%	MT	SETS	MT	%	MT	%	MT	%	MT					
PG	2010	45	50	8,846	5,471	91,034	74%	31,592	26%	870	1%	123,496	2,620	56,273	69%	20,310	25%	4,922	6%	81,505	8,099	147,441	51,938	5,806	205,184
PG	2011	49	52	9,270	5,018	70,152	75%	22,228	24%	675	1%	93,055	3,145	57,842	70%	20,996	25%	4,041	5%	82,879	8,176	128,249	43,323	4,748	176,319
PG	2012	51	52	9,636	6,530	96,029	67%	45,340	32%	1,540	1%	142,910	2,978	63,176	68%	23,839	26%	5,505	6%	92,520	9,559	159,687	69,387	7,090	236,163
PG	2013	51	52	9,533	6,862	96,663	68%	43,559	31%	1,812	1%	142,034	2,453	50,530	66%	22,455	29%	4,217	6%	77,202	9,371	147,897	66,563	6,095	220,555
PG	2014	55	53	9,315	6,440	106,253	74%	35,686	25%	1,830	1%	143,770	2,307	67,679	75%	17,841	20%	5,025	6%	90,546	8,774	174,194	53,791	6,896	234,881
PG	2015	53	54	6,684	5,686	103,661	72%	39,813	28%	1,532	1%	145,005	1,602	50,635	73%	14,163	20%	4,681	7%	69,478	7,292	154,314	53,984	6,214	214,512
PG	2016	67	41	9,016	7,625	127,426	65%	65,849	33%	3,662	2%	196,937	2,221	76,603	74%	19,862	19%	6,628	6%	103,093	9,883	205,127	86,289	10,381	301,797
PG	2017	67	58	10,956	10,325	128,354	56%	96,048	42%	3,863	2%	228,266	2,147	51,934	69%	18,645	25%	4,335	6%	74,914	12,577	182,122	116,033	8,349	306,505
PG	2018	56	53	9,691	10,346	154,606	66%	75,169	32%	4,094	2%	233,869	1,974	57,141	74%	16,407	21%	3,316	4%	76,863	12,349	212,274	91,799	7,445	311,517
PG	2019	50	52	6,625	7,489	144,234	71%	57,296	28%	2,290	1%	203,820	1,193	48,128	81%	9,473	16%	1,786	3%	59,386	8,751	193,735	67,536	4,120	265,391
PG	2020	38	41	7,359	7,957	106,321	54%	89,689	45%	1,889	1%	197,899	632	18,087	66%	8,077	30%	1,102	4%	27,265	8,646	124,900	98,737	3,015	226,652
PG	2021	40	42	7,237	6,638	99,789	61%	63,084	38%	2,131	1%	165,004	927	17,154	55%	12,124	39%	1,871	6%	31,150	7,579	117,105	75,384	4,019	196,509
PG	2022	37	45	6,838	8,546	121,866	64%	66,870	35%	1,221	1%	189,957	660	15,146	59%	9,440	37%	945	4%	25,531	9,216	137,137	76,402	2,168	215,707
PG	2023	34	38	5,236	6,116	77,279	44%	96,236	55%	1,248	1%	174,763	626	16,937	63%	8,502	32%	1,359	5%	26,798	6,745	94,225	104,759	2,608	201,592
PH	2010	25	22	4,469	2,289	25,794	55%	20,166	43%	1,196	3%	47,155	795	16,647	66%	5,989	24%	2,685	11%	25,320	3,186	43,382	26,751	3,980	74,113
PH	2011	25	23	5,296	2,719	28,521	62%	17,250	38%	179	0%	45,950	1,381	22,854	68%	10,018	30%	875	3%	33,746	4,191	52,091	27,649	1,074	80,815
PH	2012	21	29	5,580	3,560	35,007	53%	29,293	45%	1,560	2%	65,860	1,649	27,442	63%	13,991	32%	2,342	5%	43,775	5,248	62,901	43,499	3,928	110,328
PH	2013	27	30	4,450	2,635	22,276	43%	27,991	54%	1,187	2%	51,454	1,440	21,346	57%	13,620	36%	2,480	7%	37,446	4,080	43,671	41,677	3,667	89,016
PH	2014	27	29	4,330	3,242	46,033	57%	31,962	40%	2,189	3%	80,184	995	15,135	57%	9,084	34%	2,242	9%	26,461	4,251	61,314	41,201	4,464	106,980
PH	2015	23	29	2,822	1,971	25,284	56%	18,762	42%	982	2%	45,028	812	16,464	56%	10,433	35%	2,654	9%	29,551	2,791	42,061	29,512	3,687	75,260
PH	2016	17	18	1,956	1,567	26,013	55%	20,315	43%	745	2%	47,073	521	14,063	63%	6,744	30%	1,417	6%	22,224	2,134	40,940	27,631	2,308	70,879
PH	2017	12	8	1,272	1,006	11,802	48%	12,190	50%	570	2%	24,562	155	2,720	59%	1,737	38%	159	3%	4,616	1,190	14,983	14,275	753	30,011
PH	2018	12	2	314	340	5,609	64%	3,102	35%	55	1%	8,766	73	1,411	59%	937	39%	33	1%	2,381	414	7,023	4,040	88	11,151
PH	2019	12	1	16	22	392	60%	257	39%	5	1%	653	0	0	0%	0	0%	0	0%	0	22	392	257	5	653
PH	2020	6	2	1,209	1,075	12,431	44%	15,458	55%	277	1%	28,166	0	0	0%	0	0%	0	0%	0	1,075	12,431	15,458	277	28,166
PH	2021	0	0	0	0	0	0%	0	0%	0	0%	0	0	0	0%	0	0%	0	0%	0	0	0	0	0	0
SB	2010	5	5	485	95	1,892	54%	1,568	45%	19	1%	3,480	353	5,746	59%	3,793	39%	199	2%	9,737	448	7,638	5,361	218	13,217
SB	2011	5	5	1,017	119	1,692	60%	1,137	40%	8	0%	2,836	742	13,149	58%	9,190	40%	387	2%	22,725	861	14,840	10,326	395	25,562
SB	2012	5	5	1,094	98	1,090	52%	999	48%	8	0%	2,096	833	14,150	58%	9,904	41%	350	1%	24,404	931	15,239	10,903	358	26,500
SB	2013	5	5	1,093	213	1,530	34%	2,955	66%	25	1%	4,510	664	11,226	55%	8,657	43%	377	2%	20,259	876	12,756	11,612	402	24,770
SB	2014	5	5	1,212	269	2,849	36%	4,996	64%	23	0%	7,869	786	11,184	50%	10,908	48%	462	2%	22,554	1,056	14,034	15,906	485	30,425
SB	2015	8	6	1,343	389	3,053	33%	6,275	67%	54	1%	9,382	787	10,346	53%	8,853	46%	210	1%	19,410	1,176	13,400	15,128	265	28,792
SB	2016	8	8	2,217	1,047	14,756	60%	9,421	39%	324	1%	24,501	1,072	18,405	59%	12,337	40%	448	1%	31,190	2,132	33,391	21,901	775	56,067
SB	2017	10	9	2,068	1,127	12,686	60%	8,296	39%	51	0%	21,034	873	14,684	60%	9,365	38%	625	3%	24,674	2,001	27,373	17,663	676	45,712
SB	2018	10	10	2,102	808	9,797	68%	4,606	32%	23	0%	14,426	1,169	24,688	64%	13,072	34%	692	2%	38,452	1,978	34,485	17,678	715	52,878
SB	2019	11	11	2,038	856	16,178	79%	4,263	21%	125	1%	20,566	1,110	24,204	67%	11,834	33%	363	1%	36,401	1,971	40,387	16,102	488	56,977
SB	2020	11	10	1,709	632	9,083	65%	4,828	35%	37	0%	13,948	857	11,164	57%	8,028	41%	244	1%	19,436	1,493	20,285	12,936	281	33,502
SB	2021	8	8	1,730	943	13,053	65%	6,969	35%	96	1%	20,118	763	13,038	59%	9,036	41%	158	1%	22,233	1,707	26,099	16,013	255	42,366
SB	2022	10	10	1,764	548	6,788	69%	3,079	31%	20	0%	9,887	964	19,999	69%	8,478	29%	358	1%	28,835	1,512	26,787	11,558	378	38,722
SB	2023	10	10	1,876	543	3,771	51%	3,676	49%	21	0%	7,468	941	16,383	69%	6,652	28%	633	3%	23,668	1,485	20,179	10,403	655	31,236

Table 4. (continued)

FLEET	YEAR	VESSELS		DAYS	UNASSOCIATED SCHOOLS								ASSOCIATED SCHOOLS								TOTAL				
		YB	LOG		SKIPJACK			YELLOWFIN		BIGEYE		TOTAL	SKIPJACK			YELLOWFIN		BIGEYE		TOTAL	SETS	SKJ	YFT	BET	TOTAL
					SETS	MT	%	MT	%	MT	%	MT	SETS	MT	%	MT	%	MT	%	MT					
SV	2010	2	2	210	3	28	100%	0	0%	0	0%	28	136	4,758	65%	1,566	21%	1,019	14%	7,344	139	4,786	1,567	1,019	7,372
SV	2011	2	2	268	3	15	18%	70	82%	0	0%	85	185	8,367	69%	1,639	14%	2,135	18%	12,142	188	8,382	1,709	2,135	12,227
SV	2012	2	2	300	4	15	100%	0	0%	0	0%	15	213	8,465	62%	2,802	21%	2,365	17%	13,632	217	8,480	2,802	2,365	13,647
SV	2013	4	4	398	13	272	66%	139	34%	1	0%	412	296	11,761	70%	2,777	17%	2,266	14%	16,805	309	12,033	2,916	2,267	17,217
SV	2014	4	4	485	92	2,009	100%	9	0%	0	0%	2,018	303	10,244	66%	2,990	19%	2,227	14%	15,461	394	12,253	2,999	2,227	17,479
SV	2015	2	2	185	7	0	0%	0	0%	0	0%	0	177	11,906	78%	2,000	13%	1,395	9%	15,301	184	11,906	2,000	1,395	15,301
SV	2016	3	2	112	6	669	99%	8	1%	0	0%	677	95	5,002	76%	729	11%	895	14%	6,626	101	5,671	737	895	7,303
SV	2017	1	2	76	2	0	0%	31	100%	0	0%	31	73	2,963	69%	558	13%	766	18%	4,287	75	2,963	589	766	4,318
SV	2018	1	1	82	6	275	100%	0	0%	0	0%	275	82	3,341	76%	430	10%	644	15%	4,415	88	3,616	430	644	4,690
SV	2019	2	2	42	2	0	0%	0	0%	0	0%	0	50	2,227	76%	336	11%	377	13%	2,939	52	2,227	336	377	2,939
SV	2020	2	2	62	5	247	92%	23	9%	0	0%	270	58	2,659	65%	599	15%	862	21%	4,120	63	2,906	622	862	4,390
SV	2021	2	2	94	0	0	0%	0	0%	0	0%	0	93	3,696	63%	1,115	19%	1,047	18%	5,858	93	3,696	1,115	1,047	5,858
SV	2022	2	2	70	0	0	0%	0	0%	0	0%	0	76	2,622	60%	881	20%	877	20%	4,380	76	2,622	881	877	4,380
SV	2023	2	2	99	3	109	99%	1	1%	0	0%	110	96	4,438	75%	690	12%	770	13%	5,898	99	4,547	691	770	6,008
TV	2010	1	1	271	319	6,728	75%	2,235	25%	33	0%	8,997	40	1,039	67%	325	21%	193	12%	1,557	359	7,767	2,561	226	10,554
TV	2011	1	1	311	283	3,808	71%	1,530	29%	12	0%	5,350	58	1,680	81%	283	14%	104	5%	2,066	341	5,487	1,813	116	7,416
TV	2012	1	1	271	301	3,118	57%	2,351	43%	31	1%	5,500	92	4,487	81%	817	15%	250	5%	5,554	393	7,604	3,168	281	11,054
TV	2013	1	1	273	353	7,180	93%	455	6%	86	1%	7,721	79	2,965	80%	624	17%	107	3%	3,695	432	10,145	1,078	193	11,416
TV	2014	1	1	159	146	3,382	92%	260	7%	33	1%	3,675	49	1,967	87%	246	11%	55	2%	2,268	195	5,349	506	88	5,943
TV	2015	1	1	186	174	3,562	97%	127	3%	1	0%	3,690	36	1,668	94%	95	5%	17	1%	1,780	210	5,230	222	18	5,470
TV	2016	1	1	234	93	2,444	97%	76	3%	1	0%	2,520	59	2,683	75%	655	18%	252	7%	3,590	152	5,127	730	253	6,110
TV	2017	2	2	161	84	1,814	59%	1,182	39%	60	2%	3,056	59	1,755	68%	700	27%	130	5%	2,585	143	3,569	1,883	189	5,641
TV	2018	1	1	208	160	3,184	74%	1,077	25%	44	1%	4,305	108	5,555	81%	488	7%	788	12%	6,831	268	8,740	1,565	832	11,136
TV	2019	1	1	212	106	2,698	86%	418	13%	11	0%	3,127	83	3,385	93%	170	5%	93	3%	3,648	189	6,083	587	105	6,775
TV	2020	3	3	308	96	2,200	89%	257	10%	3	0%	2,460	119	6,402	86%	541	7%	532	7%	7,475	215	8,601	798	536	9,935
TV	2021	6	6	1,060	677	14,323	80%	3,570	20%	67	0%	17,960	359	12,076	83%	1,720	12%	739	5%	14,535	1,036	26,399	5,289	806	32,495
TV	2022	6	6	1,247	954	15,662	79%	4,005	20%	98	1%	19,765	478	18,219	84%	2,588	12%	849	4%	21,656	1,432	33,882	6,592	947	41,421
TV	2023	6	6	1,362	1,223	17,466	59%	12,268	41%	89	0%	29,823	412	16,101	91%	1,087	6%	602	3%	17,789	1,635	33,567	13,354	691	47,612
TW	2010	34	30	7,865	6,413	98,818	81%	23,065	19%	726	1%	122,609	1,709	54,876	72%	15,489	20%	5,875	8%	76,241	8,122	153,694	38,555	6,601	198,850
TW	2011	34	31	8,801	4,763	56,137	81%	12,329	18%	572	1%	69,037	2,955	78,749	74%	19,668	18%	8,479	8%	106,897	7,718	134,886	31,997	9,051	175,935
TW	2012	34	33	7,146	4,660	60,940	71%	24,214	28%	919	1%	86,073	2,940	89,299	78%	17,301	15%	7,978	7%	114,578	7,600	150,239	41,515	8,897	200,651
TW	2013	34	34	7,706	6,171	83,155	83%	16,355	16%	1,051	1%	100,562	2,638	81,513	73%	20,969	19%	9,436	8%	111,919	8,809	164,669	37,325	10,487	212,481
TW	2014	34	36	6,845	5,749	103,695	88%	13,358	11%	1,152	1%	118,205	2,654	90,093	76%	20,460	17%	8,398	7%	118,952	8,404	193,788	33,818	9,550	237,157
TW	2015	34	34	5,141	4,639	79,074	76%	24,222	23%	1,454	1%	104,750	1,785	71,675	80%	12,502	14%	5,321	6%	89,498	6,424	150,749	36,724	6,775	194,249
TW	2016	34	31	5,273	4,785	80,100	70%	32,887	29%	1,358	1%	114,345	1,511	55,148	75%	12,901	17%	5,993	8%	74,043	6,298	135,249	45,788	7,351	188,388
TW	2017	31	30	5,461	5,167	63,362	66%	31,561	33%	1,026	1%	95,949	1,904	56,049	77%	12,844	18%	4,075	6%	72,968	7,072	119,447	44,409	5,102	168,958
TW	2018	27	29	5,185	4,634	82,061	85%	14,264	15%	641	1%	96,966	2,292	78,456	79%	15,893	16%	5,121	5%	99,470	6,927	160,518	30,157	5,761	196,436
TW	2019	30	30	5,231	5,659	119,720	83%	24,485	17%	974	1%	145,178	2,042	77,406	81%	13,895	15%	4,107	4%	95,408	7,708	197,192	38,388	5,086	240,665
TW	2020	29	28	4,502	4,100	76,085	84%	14,308	16%	542	1%	90,935	1,878	59,495	70%	18,926	22%	7,163	8%	85,584	5,978	135,580	33,234	7,705	176,519
TW	2021	29	29	5,112	4,486	79,632	73%	28,365	26%	858	1%	108,855	2,191	80,247	75%	19,362	18%	7,215	7%	106,824	6,678	159,879	47,727	8,073	215,679
TW	2022	26	26	4,662	4,124	73,071	82%	15,521	17%	581	1%	89,174	2,488	93,375	77%	20,654	17%	8,004	7%	122,033	6,612	166,447	36,175	8,585	211,207
TW	2023	24	26	4,172	4,169	64,755	70%	26,937	29%	614	1%	92,306	1,710	65,140	83%	9,905	13%	3,025	4%	78,069	5,880	129,895	36,842	3,639	170,375

Table 4. (continued)

FLEET	YEAR	VESSELS		DAYS	UNASSOCIATED SCHOOLS								ASSOCIATED SCHOOLS								TOTAL				
		YB	LOG		SKIPJACK			YELLOWFIN		BIGEYE		TOTAL	SKIPJACK			YELLOWFIN		BIGEYE		TOTAL	SETS	SKJ	YFT	BET	TOTAL
					SETS	MT	%	MT	%	MT	%	MT	SETS	MT	%	MT	%	MT	%	MT					
US	2010	37	37	8,220	6,331	109,888	83%	21,907	17%	1,013	1%	132,809	2,397	90,840	81%	15,145	14%	6,350	6%	112,336	8,738	200,979	37,152	7,393	245,524
US	2011	37	36	8,048	3,008	48,963	82%	10,857	18%	123	0%	59,943	3,401	112,031	78%	19,971	14%	11,295	8%	143,297	6,409	160,995	30,828	11,417	203,240
US	2012	39	40	8,789	5,622	98,564	80%	24,030	19%	1,196	1%	123,790	3,464	109,292	80%	18,100	13%	8,520	6%	135,911	9,088	207,901	42,139	9,719	259,759
US	2013	40	42	8,380	5,028	97,059	92%	8,225	8%	801	1%	106,085	3,152	113,232	77%	23,299	16%	11,541	8%	148,072	8,183	210,387	31,530	12,353	254,270
US	2014	40	40	9,069	6,268	117,271	84%	22,199	16%	427	0%	139,896	3,717	147,547	85%	17,020	10%	8,542	5%	173,109	9,987	264,818	39,219	8,969	313,005
US	2015	39	39	6,988	5,904	111,992	89%	13,240	11%	620	1%	125,853	2,052	95,981	86%	11,069	10%	5,176	5%	112,226	7,956	207,973	24,309	5,796	238,079
US	2016	37	34	5,571	3,333	75,649	87%	10,467	12%	400	1%	86,515	2,177	88,537	77%	17,319	15%	8,765	8%	114,621	5,511	164,196	27,790	9,167	201,152
US	2017	34	34	5,623	2,652	43,795	74%	15,236	26%	297	1%	59,328	2,442	83,905	78%	15,993	15%	7,223	7%	107,121	5,095	127,700	31,229	7,520	166,449
US	2018	34	35	5,758	2,828	54,051	78%	15,063	22%	211	0%	69,326	2,910	101,535	79%	16,266	13%	10,325	8%	128,125	5,738	155,586	31,329	10,536	197,451
US	2019	31	30	4,323	3,119	69,197	85%	12,333	15%	297	0%	81,827	1,894	69,305	82%	10,414	12%	4,977	6%	84,696	5,015	138,538	22,758	5,283	166,580
US	2020	23	23	3,699	1,578	38,148	95%	1,839	5%	204	1%	40,192	1,727	73,576	76%	13,043	13%	10,395	11%	97,014	3,305	111,724	14,882	10,599	137,205
US	2021	21	17	1,434	80	1,790	93%	127	7%	6	0%	1,922	1,220	35,674	74%	7,194	15%	5,680	12%	48,548	1,300	37,464	7,321	5,686	50,471
US	2022	14	12	1,346	209	5,081	81%	1,160	19%	18	0%	6,258	1,031	35,119	71%	7,396	15%	6,926	14%	49,442	1,240	40,200	8,556	6,944	55,700
US	2023	13	12	1,789	595	10,546	71%	4,216	29%	53	0%	14,815	1,170	46,149	78%	4,591	8%	8,387	14%	59,128	1,765	56,695	8,807	8,441	73,943
VU	2010	5	5	872	469	10,125	76%	3,135	24%	16	0%	13,276	198	8,274	79%	1,626	16%	540	5%	10,440	668	18,402	4,762	556	23,719
VU	2011	6	4	1,142	287	5,444	81%	1,213	18%	37	1%	6,695	391	14,302	86%	2,006	12%	379	2%	16,688	678	19,747	3,219	416	23,382
VU	2012	6	3	775	472	9,466	64%	5,203	35%	158	1%	14,827	268	9,882	81%	1,498	12%	795	7%	12,175	740	19,348	6,701	953	27,002
VU	2013	6	4	974	607	11,269	84%	2,147	16%	73	1%	13,490	263	10,382	82%	1,750	14%	580	5%	12,712	870	21,652	3,898	653	26,202
VU	2014	3	3	685	362	8,615	87%	1,249	13%	42	0%	9,906	230	9,358	86%	1,120	10%	376	4%	10,855	592	17,973	2,370	418	20,761
VU	2015	3	3	286	105	1,641	95%	79	5%	1	0%	1,722	125	5,917	89%	558	8%	149	2%	6,623	230	7,558	638	150	8,345
VU	2016	3	3	165	40	1,249	90%	122	9%	11	1%	1,382	37	2,584	86%	69	2%	360	12%	3,012	78	3,833	190	370	4,394
VU	2017	3	3	249	119	1,447	65%	788	35%	7	0%	2,242	122	2,984	65%	654	14%	964	21%	4,603	241	4,432	1,442	971	6,845
VU	2018	2	2	313	337	6,390	81%	1,469	19%	53	1%	7,912	96	3,930	85%	414	9%	269	6%	4,613	433	10,320	1,883	322	12,525
VU	2019	5	6	573	739	22,920	89%	2,597	10%	323	1%	25,840	138	7,216	84%	634	7%	708	8%	8,558	878	30,137	3,231	1,031	34,398
VU	2020	6	6	915	965	23,037	81%	5,210	18%	238	1%	28,485	334	13,610	74%	2,706	15%	2,083	11%	18,400	1,299	36,647	7,917	2,321	46,885
VU	2021	7	7	1,029	948	20,379	76%	6,246	23%	167	1%	26,791	450	16,702	77%	3,558	16%	1,503	7%	21,763	1,398	37,080	9,804	1,669	48,554
VU	2022	8	8	1,260	1,435	31,747	78%	8,678	21%	270	1%	40,695	555	21,869	77%	4,685	17%	1,742	6%	28,295	1,990	53,616	13,363	2,012	68,990
VU	2023	7	8	1,214	1,330	27,584	72%	10,701	28%	128	0%	38,413	391	15,214	83%	2,125	12%	1,053	6%	18,392	1,721	42,798	12,826	1,180	56,805

Table 4. (continued)

YEAR	VESSELS			UNASSOCIATED SCHOOLS								ASSOCIATED SCHOOLS								TOTAL				
	YB	LOG	DAYS	SKIPJACK			YELLOWFIN		BIGEYE		TOTAL	SKIPJACK			YELLOWFIN		BIGEYE		TOTAL	SETS	SKJ	YFT	BET	TOTAL
				SETS	MT	%	MT	%	MT	%	MT	SETS	MT	%	MT	%	MT	%	MT	SETS	MT	MT	MT	MT
2010	276	262	52,843	38,227	686,792	76%	212,508	23%	8,701	1%	908,000	13,416	427,108	73%	114,728	20%	46,186	8%	588,023	51,922	1,118,060	329,540	55,247	1,502,847
2011	278	267	58,730	30,085	424,675	75%	134,536	24%	3,487	1%	562,696	21,874	615,378	73%	154,553	18%	72,039	9%	841,970	52,111	1,041,734	289,723	75,641	1,407,098
2012	287	286	54,470	36,210	613,026	73%	217,166	26%	8,798	1%	838,989	20,328	599,886	76%	135,326	17%	56,813	7%	792,025	56,676	1,214,540	353,087	65,724	1,633,351
2013	297	293	55,420	38,537	650,045	79%	160,461	20%	9,434	1%	819,943	18,058	560,179	72%	155,281	20%	62,493	8%	777,953	56,701	1,212,028	316,675	72,082	1,600,785
2014	309	306	53,404	38,425	732,646	77%	204,903	22%	10,088	1%	947,637	18,084	638,346	78%	125,334	15%	57,182	7%	820,868	56,593	1,372,804	330,962	67,426	1,771,833
2015	307	303	43,282	34,266	695,041	78%	182,557	21%	11,240	1%	888,841	13,835	554,842	79%	103,857	15%	39,591	6%	698,287	48,253	1,253,657	288,226	51,448	1,593,332
2016	293	278	44,218	32,461	646,527	74%	222,314	25%	10,786	1%	879,625	13,938	531,446	77%	109,961	16%	50,113	7%	691,523	46,569	1,181,816	334,324	61,344	1,577,484
2017	282	279	47,809	33,337	508,625	65%	260,242	33%	9,540	1%	778,410	16,806	529,355	77%	115,571	17%	46,300	7%	691,228	50,416	1,043,204	378,766	56,304	1,478,274
2018	274	269	44,984	32,875	623,585	75%	193,392	23%	11,282	1%	828,261	18,195	667,575	80%	115,848	14%	52,085	6%	835,504	51,265	1,295,296	311,121	64,105	1,670,613
2019	281	266	42,625	37,168	857,697	81%	194,544	18%	8,924	1%	1,061,161	14,958	601,444	82%	98,389	13%	33,672	5%	733,502	52,427	1,465,509	295,904	43,145	1,804,557
2020	268	253	45,905	33,616	646,658	74%	218,760	25%	6,256	1%	871,674	15,268	574,845	75%	132,311	17%	57,314	7%	764,470	49,057	1,224,221	353,687	63,955	1,641,864
2021	261	258	43,684	28,947	545,092	72%	202,920	27%	6,517	1%	754,526	17,408	582,989	75%	137,712	18%	56,057	7%	776,760	46,385	1,128,746	341,006	62,606	1,532,358
2022	248	250	42,684	31,331	576,867	76%	172,268	23%	5,065	1%	754,201	18,447	651,352	77%	135,188	16%	59,505	7%	846,044	49,803	1,228,590	307,686	64,643	1,600,919
2023	256	249	43,163	31,181	551,110	67%	266,970	32%	4,815	1%	822,892	16,609	611,074	82%	88,335	12%	45,021	6%	744,429	47,845	1,163,424	355,798	49,901	1,569,123

**Notes:**

1. Estimates are based on aggregate data and raised logsheet data with species composition adjusted using observer sampling with grab sample bias correction. Note that these estimates may differ from the annual catch estimates provided by CCMs.
2. Tropical WCPFC Area (20°N–20°S). Estimates exclude domestic purse seine catch/effort in Philippines, Indonesia and Vietnam. [we hope to include estimates of domestic-based Philippines catch/effort in their home EEZ and HSP #1 in future versions of this table].
3. Two sources of estimates of vessel numbers are provided (i) those provided by CCMs with their annual catch estimates (and therefore appear in the WCPFC Yearbook) and (ii) estimates of vessel numbers from unraised operational data available to SPC.
4. The estimate of Japanese purse seine vessels fishing in the tropical fishery (20°N-20°S) has been determined by only considering vessel numbers in the categories >200 GRT.
5. There are several instances where vessel numbers from unraised logbook data are higher than the vessel numbers provided by the CCM. The reasons for these occurrences include: (i) situations where one vessel became inactive during the calendar year and was replaced by a new vessel – the vessel number from the operational data is based on a count of the total distinct vessels fishing throughout the year; (ii) instances where there are inconsistencies in the charter/flag assignment between the vessel numbers provided by CCMs and the operational logsheet data (e.g. Philippine-flagged vessels chartered to PNG – this will require follow-up and clarification with relevant CCMs).
6. ASSOCIATED covers sets on Drifting FAD, Log and Anchored FAD. Catch/effort for sets on ANIMALS is not shown separately but are included in the TOTAL.
7. Includes Catch and Effort in Archipelagic Waters.
8. Total Associated sets may differ from values provided in Table 3. The reasons for the differences include, (i) sets in archipelagic waters are included in this table but not in Table 3, (ii) the raising process in Table 3 is undertaken at the EEZ/AW level while the raising in this Table is undertaken at the WCPFC Area level; this will be an issue in cases where logbook coverage is not 100%. Future versions of Tables 3 and 7 will be reconciled.

**Fleet Codes**

CK	- Cook Islands	CN	- China	ES	- EU-Spain	FM	- FSM
JP	- Japan	KI	- Kiribati	KR	- Republic of Korea		
MH	- Marshall Islands	NZ	- New Zealand	PG	- PNG		
PH	- Philippines (DW)	SB	- Solomon Is.	SV	- El Salvador	NR	- Nauru
TV	- Tuvalu	TW	- Chinese Taipei	US	- USA	VU	- Vanuatu

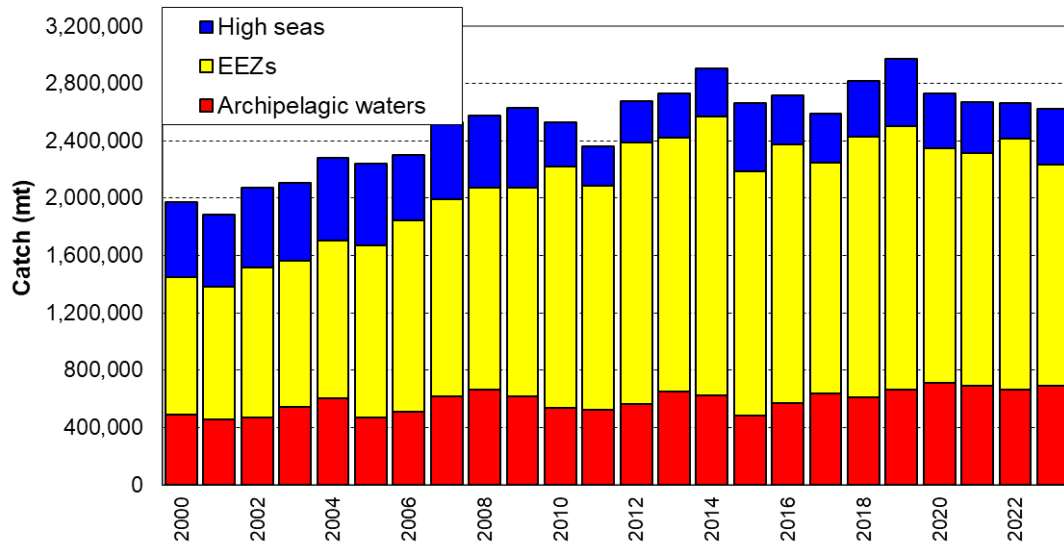


**Table 5. Annual high seas FAD sets, by fleet, 2015–2023.**

CCM	2015	2016	2017	2018	2019	2020	2021	2022	2023	Notes
CHINA	0	3	1	2	0	0	0	16	0	
COOK ISLANDS	0	0	0	0	42	14	63	59	13	4, 5
ECUADOR	0	0	0	0	0	0	0	0	0	4, 5
EL SALVADOR	50	22	10	29	8	30	28	30	18	4
EU-SPAIN	149	64	128	110	101	151	238	219	155	4
FSM	59	164	48	135	196	219	230	92	238	
JAPAN	1	3	0	0	2	11	2	0	0	
KIRIBATI	209	374	417	471	463	334	327	222	605	7
MARSHALL ISLANDS	168	65	423	143	265	277	282	141	202	4
NAURU	0	0	0	51	55	211	55	56	209	4
NEW ZEALAND	31	5	75	40	36	2	0	0	0	4
PAPUA NEW GUINEA	139	14	0	0	0	1	0	0	0	
PHILIPPINES	1	0	0	3	29	0	0	0	0	6
REPUBLIC OF KOREA	51	103	3	114	87	74	76	17	29	
SOLOMON ISLANDS	0	0	22	16	15	2	0	0	12	4
CHINESE TAIPEI	23	55	0	6	23	17	26	35	23	
TUVALU	4	34	41	27	19	77	145	31	137	4
USA	526	296	0	480	425	710	579	393	325	
VANUATU	0	37	100	24	17	90	101	63	113	3

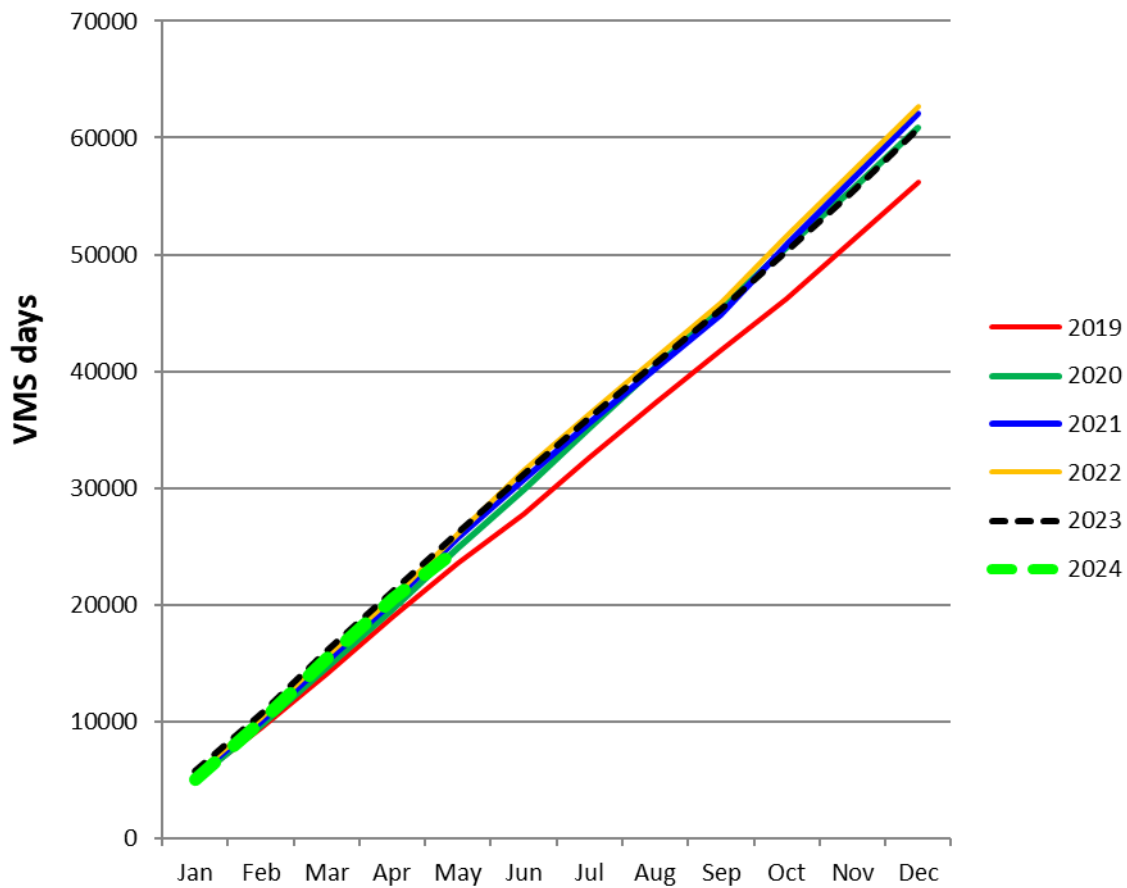
**Notes**

1. This table has been prepared considering the language of CMM 2016-01 paragraph 18 footnote 5 that states “The high seas FAD closure in paragraph 18 does not apply in 2017 to a CCM that has achieved a verifiable reduction in bigeye catches by its purse seine vessels to 55% from current levels (2010-2012), to be reviewed on the basis of the advice of the Scientific Committee. A CCM that has qualified for the above-mentioned exemption shall maintain a verifiable reduction in bigeye catches by its purse seine vessels to 55% from the reference levels (2010-2012) also in the course of 2017.”
2. High seas FAD sets are sourced from operational logbook data noting that some data are provisional at this stage.
3. The sets presented in this Table exclude effort in the overlap area because it takes into account the WCPFC9 decision on the application of measures in the part of the WCPFC Convention Area that overlaps with the IATTC Convention Area (WCPFC9 Summary Report paragraph 80). European Union is a WCPFC member who is also an IATTC member, notified WCPFC in April 2013, of their choice of IATTC measures in the overlap area. Given that Ecuador and El Salvador are members of IATTC, the rules of the RFMO of which it is a member apply in the overlap area between WCPFC and IATTC, even if the CCM is a cooperating non-member of the other RFMO.
4. At WCPFC13, the discussions confirmed that paragraph 18 measures would be implemented in 2017 and that the following fleets would have qualified for and would apply footnote 5 of CMM 2016-01: El Salvador, Ecuador, European Union, Republic of Marshall Islands, New Zealand, Solomon Islands, Tuvalu and Vanuatu.
5. Despite Note 4, WCPFC13 determined Ecuador’s participatory rights were zero days in the high seas of the Convention Area in 2017.
6. The measures that the Philippines will take are in Attachment C of CMM 2016-01, or its superseding obligation. In 2017, the Philippines expended 2,696 days in the HSP1 during 2017 and no reported purse seine effort in any other high seas areas. These values do not include fishing in the HSP #1.
7. In addition to the FAD measures 2015 and 2016, except for those Kiribati flagged vessels fishing in the adjacent high seas, it shall be prohibited to set on FADs in the high seas, unless the Commission decides on other alternative measures at its 2014 or 2015 or 2016 annual meeting.

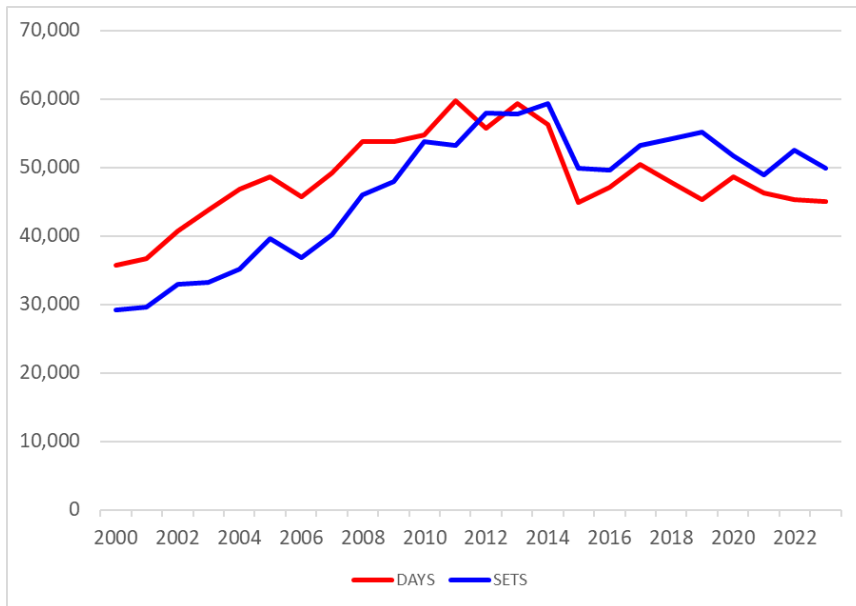


**Figure 1. Tuna catch estimates (mt) in the WCP-CA, by broad area, all gear types.**

Tuna species are (albacore, bigeye, skipjack and yellowfin. Areas are: Archipelagic waters (AWs), national waters (EEZs, excluded AWs) and the high seas for all gear types combined.



**Figure 2. Cumulative tropical purse seine days at sea by month, 2009-2024, as measured by VMS (excludes days in port)**



**Figure 3. Annual trends in purse seine effort in the WCPFC Convention Area between 20°N and 20°S.** “DAYS” – days fishing and searching. Excludes domestic purse seine effort in Philippines and Indonesia, but includes Philippine domestic-based effort in HSP#1. Estimates are based on raised logsheet data.

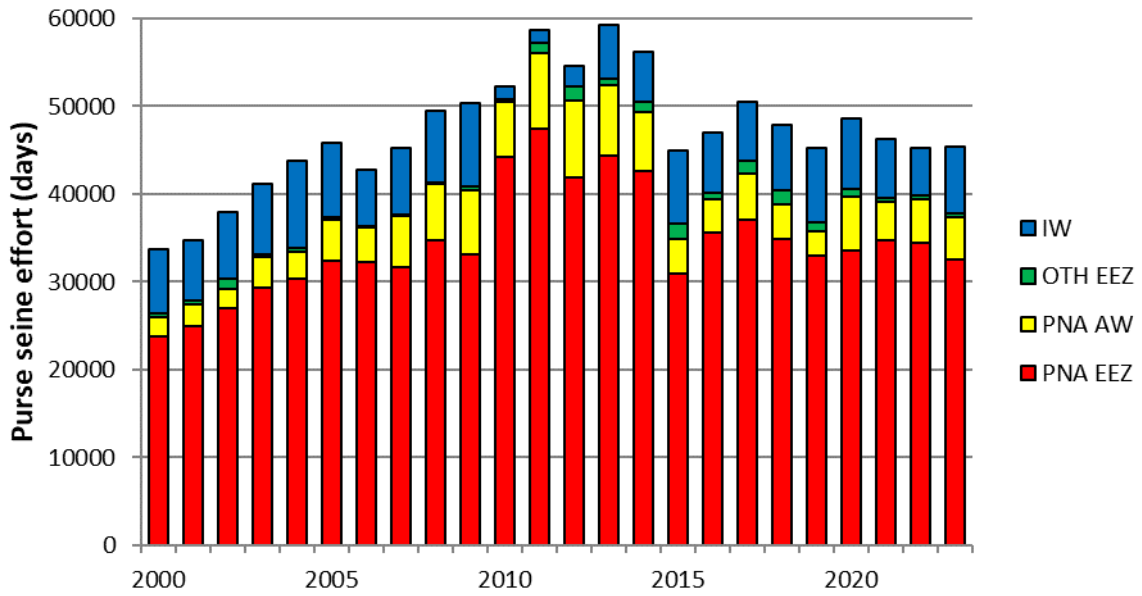


Figure 4. Purse seine effort (days fishing and searching) in the WCPFC Convention Area between 20°N and 20°S. Excludes domestic purse seine effort in Philippines and Indonesia. Estimates are based on raised logsheet data.

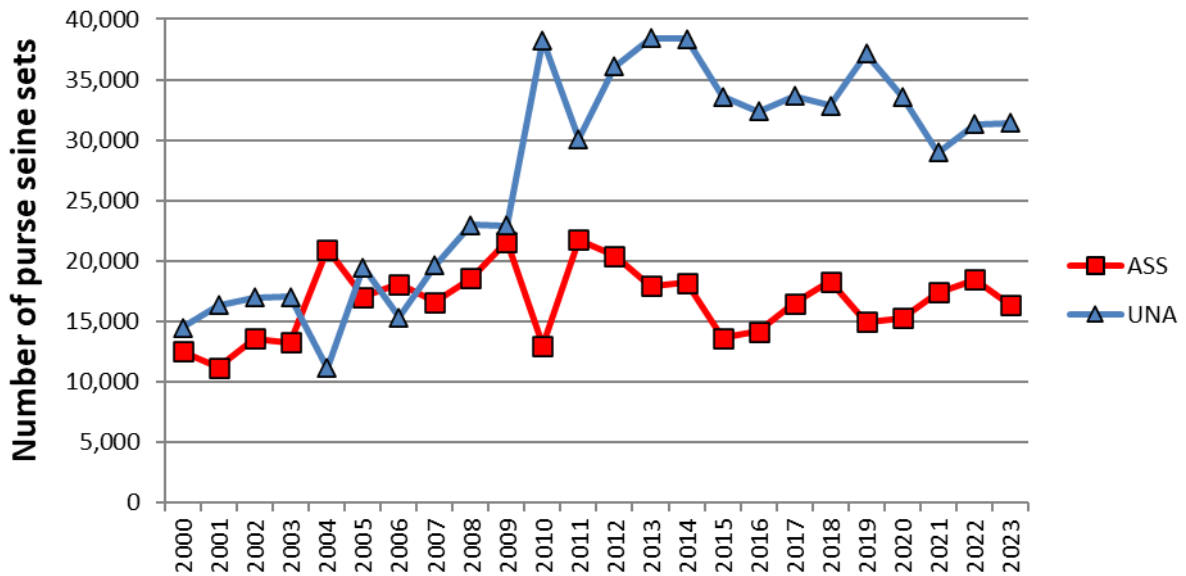


Figure 5. Sets by set type made in the WCPO tropical purse seine fishery, 2000 – 2023. Associated (ASS) and Unassociated (UNA) sets. Activities in the domestic purse seine fisheries of Indonesia and Philippines are excluded. Associated sets include animal-associated sets.

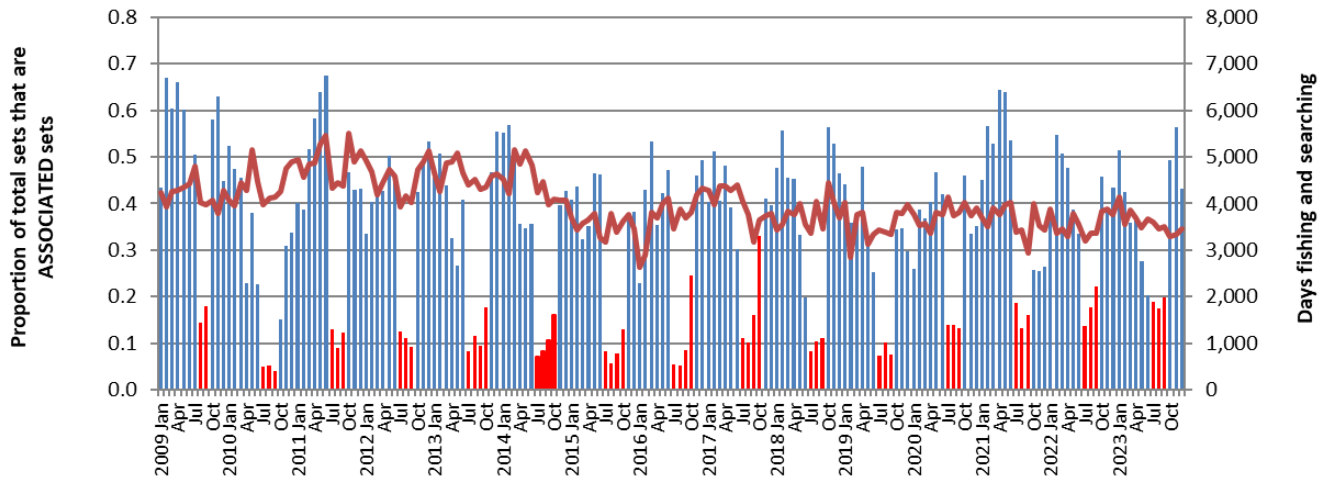
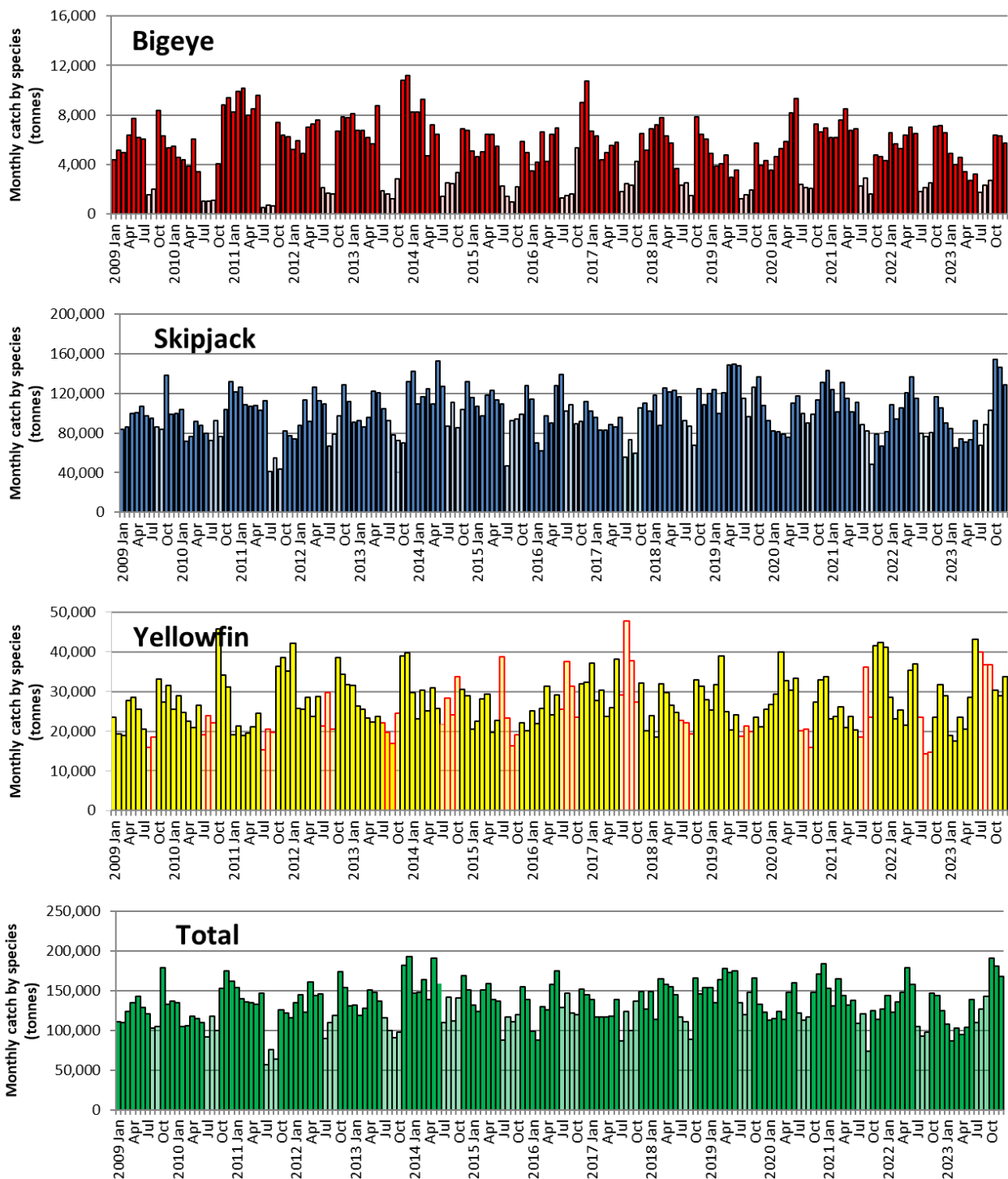


Figure 6. Proportion of the total purse seine fishing activity comprising associated sets.

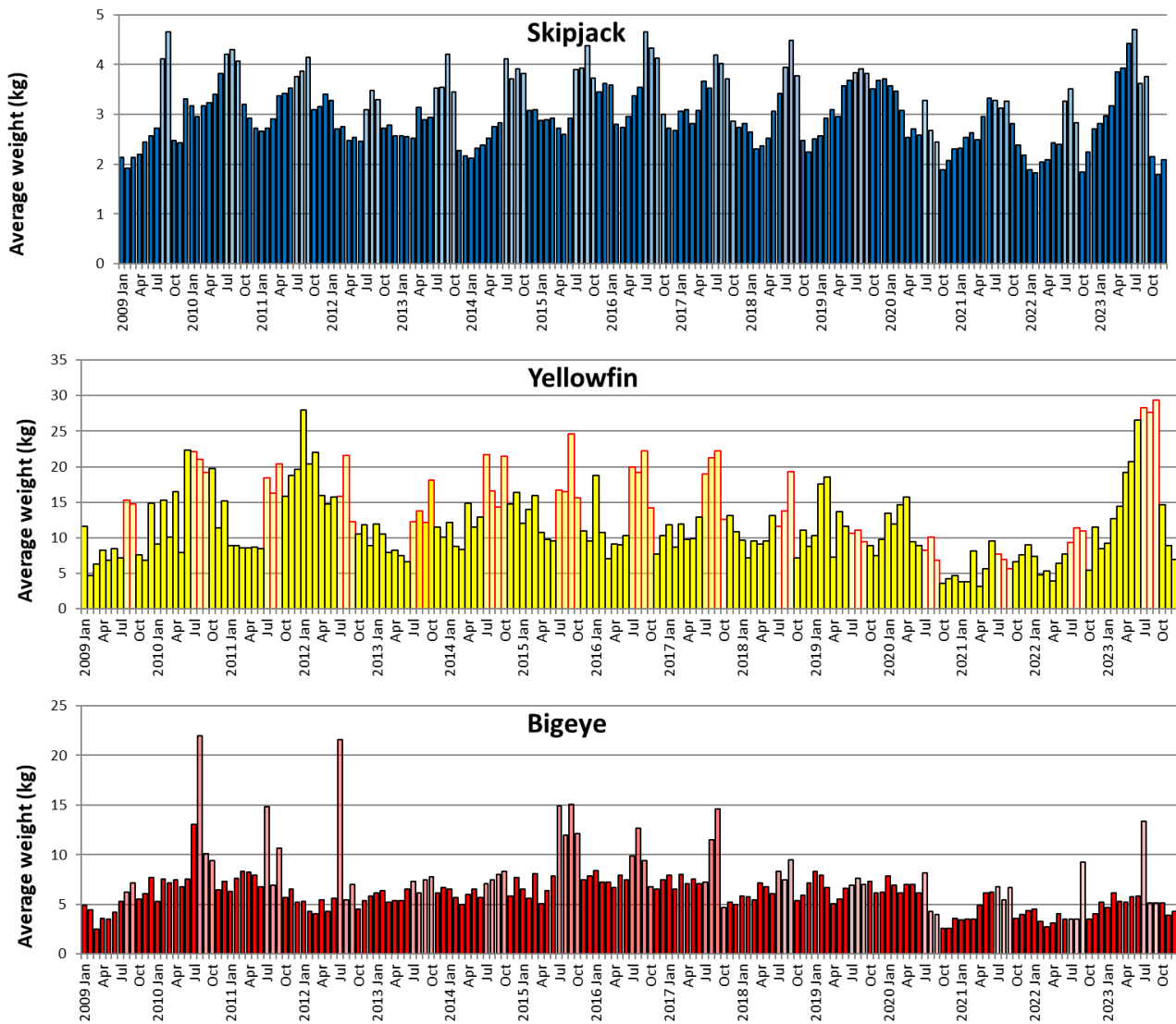
As indicated by logsheet data.

Red bars indicate the FAD closure months. Total effort in days is shown by the plotted line. Activities in the domestic purse seine fisheries of Indonesia and Philippines are excluded.



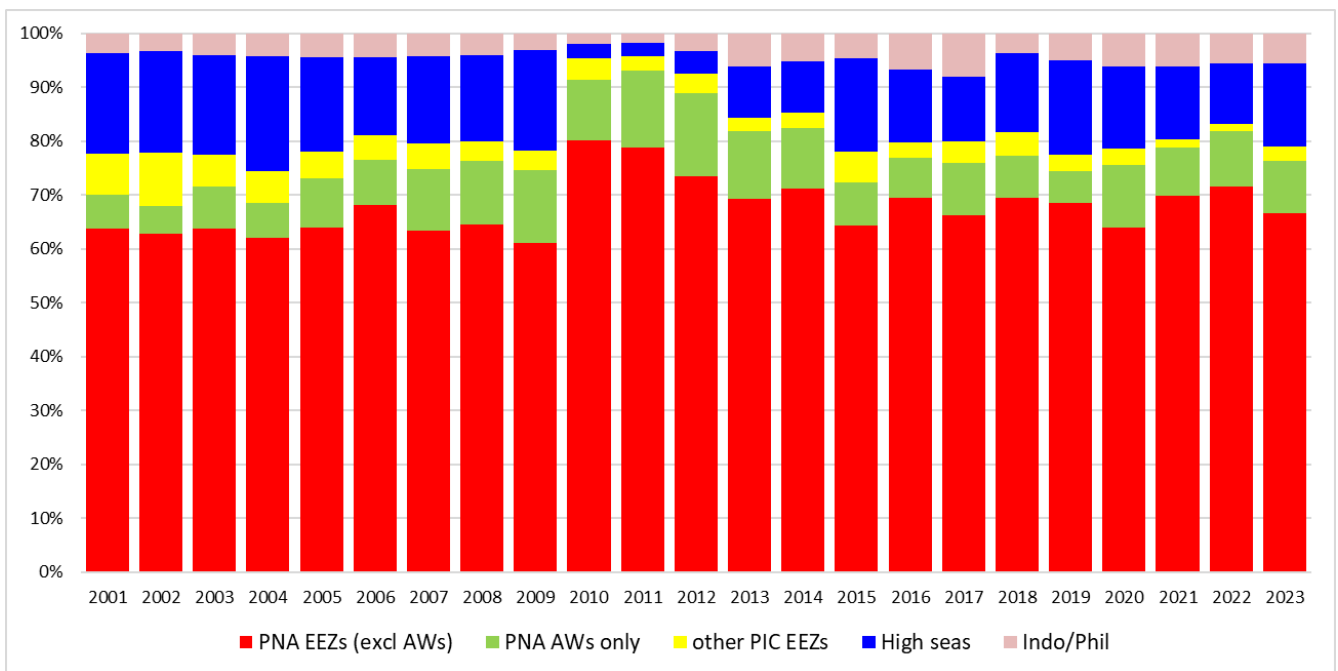
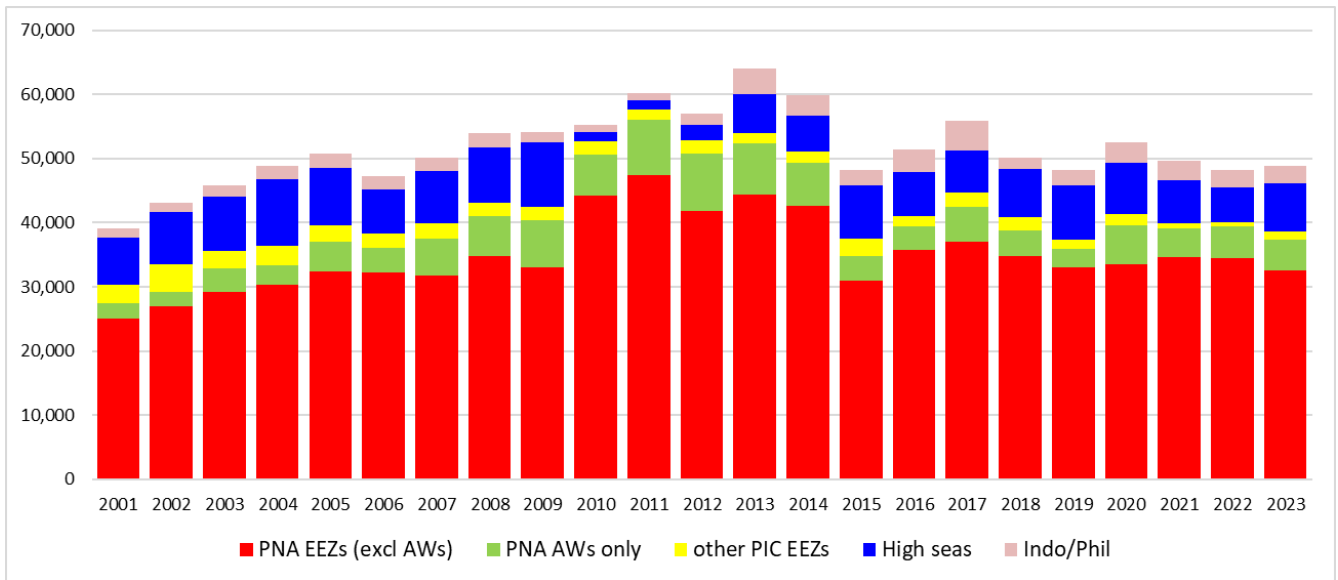
**Figure 7. Monthly purse seine catch by species**

(raised logsheet data with species composition adjusted using observer sampling with grab sample bias correction). FAD closure months are shaded in lighter colour. Data excludes the domestic fisheries of Indonesia and Philippines.



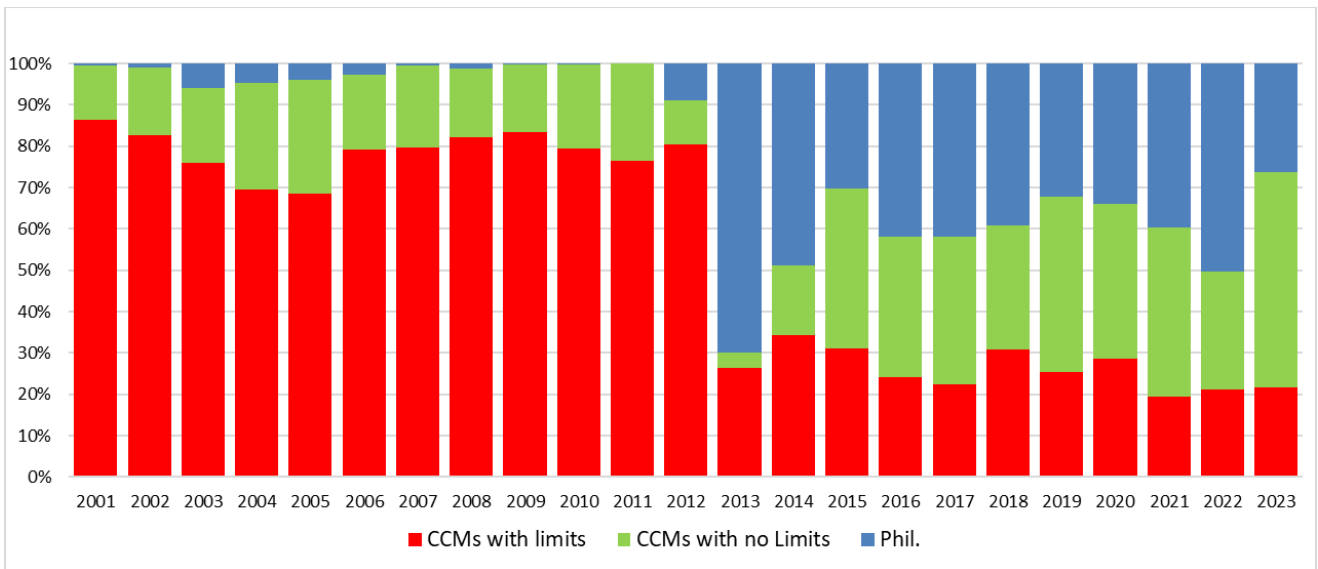
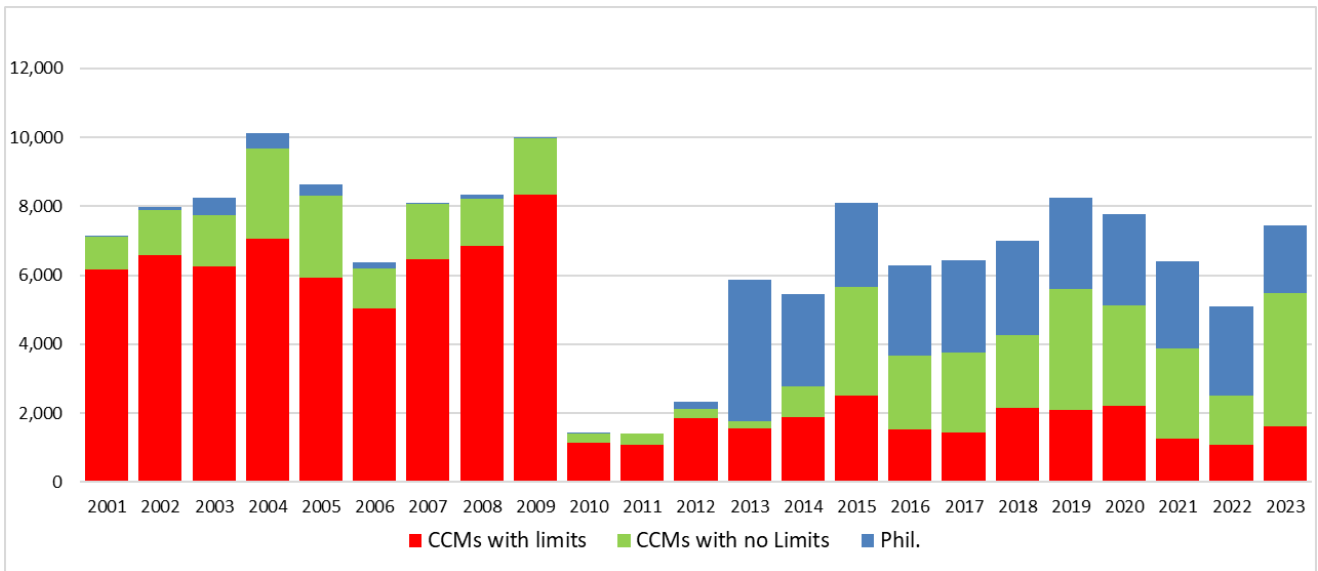
**Figure 8. Monthly average weight of bigeye, skipjack and yellowfin tuna.**

Estimated from observer sampling data, 2009-2023. FAD closure months are shaded in lighter colour. Data excludes the domestic fisheries of Indonesia and Philippines. Coverage of observer data in years 2020-2022 was approximately 50%, 20% and 15% respectively, due to the impacts of COVID-19 and biased to certain fleets only; observer coverage for 2023 was around 65% at the time of preparing this paper.



**Figure 9. Purse seine effort in waters under national jurisdiction (EEZs and AWs) and in high seas (20°N-20°S)**  
 (days fished—top and percentage days fished—bottom)  
*(Refer to NOTES under TABLE 1 above)*

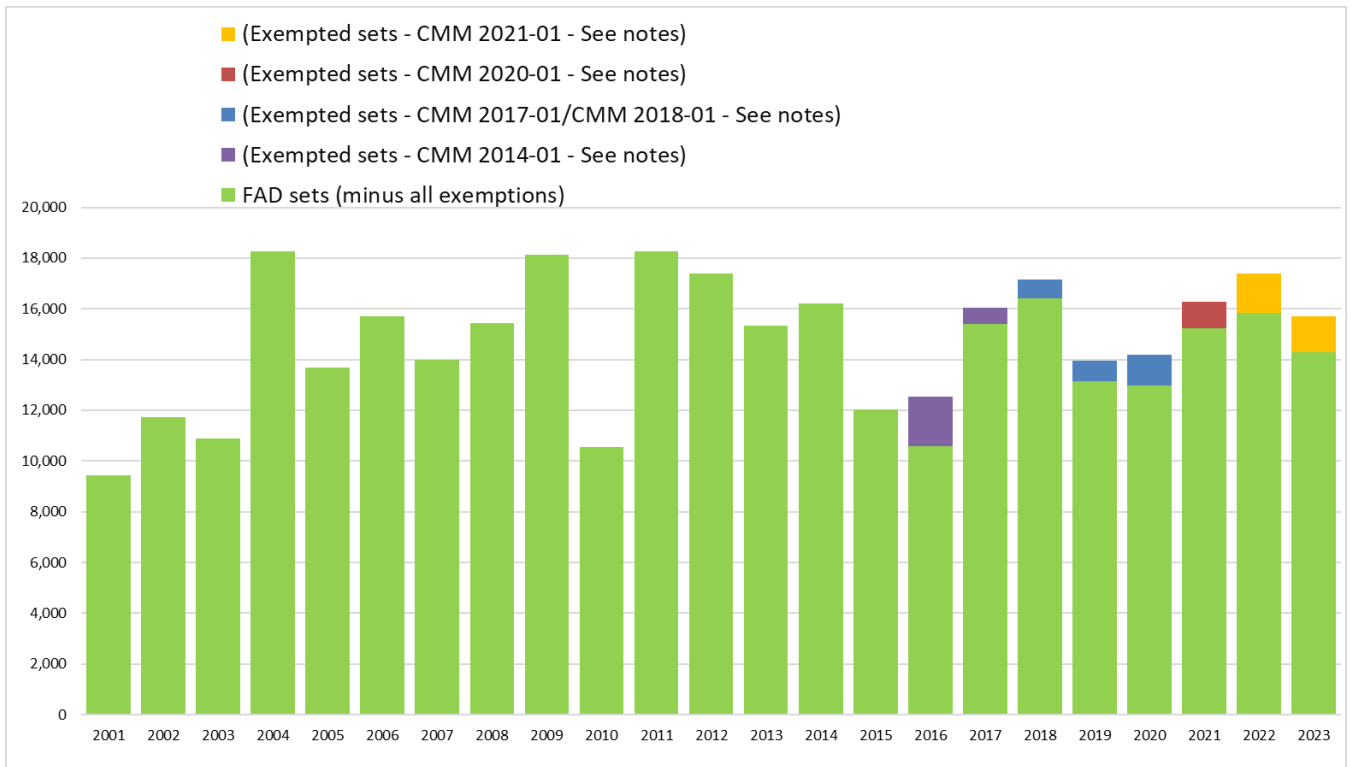




**Figure 10. Purse seine effort in high seas (20°N–20°S), by fleet category.**  
(days fished–top and percentage days fished–bottom)

*(Refer to NOTES under TABLE 2 above*

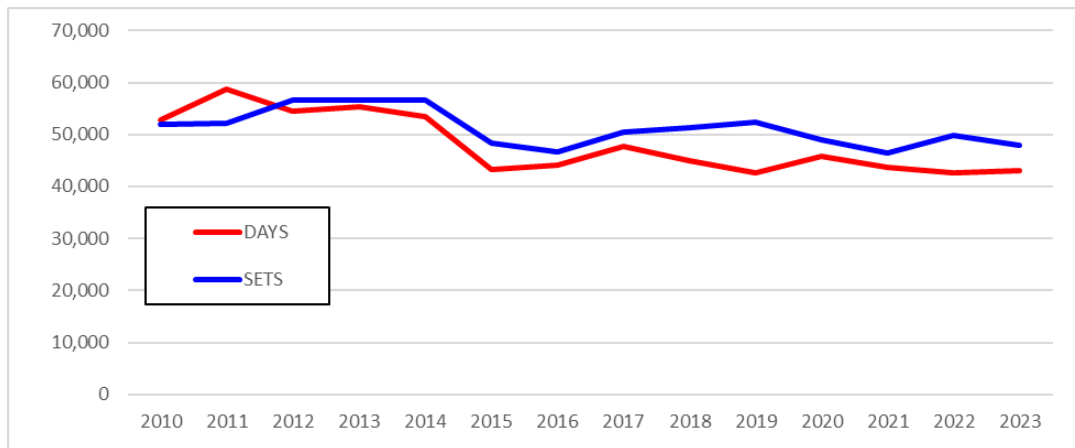
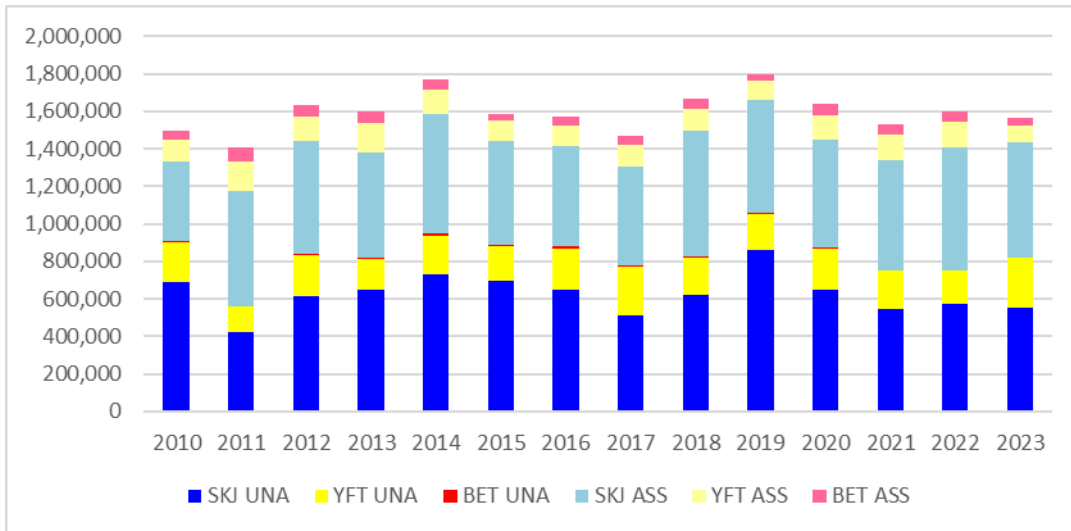
*“CCMs with no limits” are Pacific Island fleets fishing in high seas adjacent to their home waters;  
Philippines effort data prior to 2013 are not available or underreported)*



**Figure 11. Estimated FAD sets undertaken in the tropical purse seine fishery (20°N-20°S), by fleet category.**

*(Refer to NOTES under TABLE 3 above)*

*“Exempted Sets” refers to the footnote 3 exemption of CMM 2014-01; refer to Notes 11, 12, 13 and 14, and CMM 2017-01 (footnote 2) and CMM 2018-01, CMM 2020-01 CMM 2021-01 (footnote 1) refer to Notes 15 of Table 3)*



**Figure 12. Purse seine tuna catch (top) and effort (bottom) by set type and species**  
 WCPFC Convention Area between 20°N and 20°S, 2010–2023, excluding domestic purse seine catch/effort in Philippines, Indonesia and Vietnam. Includes domestic-based Philippines catch/effort in the HSP#1.  
*(Refer to NOTES under TABLE 4 above)*

## 2. Longline fishery information

**Table 6. Reported longline catches metric tonnes of bigeye tuna in the WCPFC-CA, by flag.**

Table 6. Reported longline catches metric tonnes of bigeye tuna in the WCPFC-CA, by flag.

CCM	2001	2002	2003	2004	2005	2006	2007	2008	2009	2010	2011	2012	2013	2014	2015	2016	2017	2018	2019	2020	2021	2022	2023	CMM limits for 2022	CMM limits for 2023	See Notes
AMERICAN SAMOA	75	196	242	227	134	181	218	132	249	487	1,263	1,502	389	318	557	658	1,409	851	1,545	1,586	428	1,565	406			4
AUSTRALIA	1,307	1,002	1,024	892	791	499	1,008	1,027	726	458	379	553	489	490	785	825	418	325	258	290	361	342	225			7
BELIZE	1,322	812	782	297	425	254	158	89	43	89	102	132	217	0	0	0	0	0	0	0	0	0	0			8
CHINA	2,227	2,312	8,965	11,748	7,520	13,378	10,535	10,798	15,289	13,924	11,139	11,324	10,671	9,370	8,210	8,195	7,023	8,695	8,644	7,403	5,493	5,667	4,776	8,724	8,724	10,11,16
COOK ISLANDS	1	56	204	394	220	166	238	292	217	319	925	1,624	208	184	151	183	298	197	124	97	83	75	9			4
EU-PORTUGAL	0	0	0	0	0	0	0	0	0	3	17	106	71	17	10	0	0	0	0	0	0	0	0			7
EU-SPAIN	0	0	0	42	17	62	62	77	46	15	10	23	23	65	53	53	21	39	30	40	105	112	192			7
FSM	651	759	656	542	182	172	1,395	970	1,395	1,113	1,500	1,700	1,270	2,488	2,296	1,869	2,134	3,107	3,559	2,158	1,606	1,375	1,220			4
FIJI	662	853	889	1,254	721	771	556	671	768	539	1,718	1,588	1,018	1,698	1,184	1,396	1,108	891	1,182	736	482	426	688			4
FRENCH POLYNESIA	745	649	439	502	606	498	478	490	587	436	607	654	787	741	813	563	896	1,063	954	874	1,045	1,388	1,232			4
GUAM	0	0	0	0	0	0	0	0	0	0	0	0	0	0	831	932	0	0	0	0	0	0	0			4
INDONESIA	942	1,470	2,168	2,192	2,285	2,750	2,155	3,395	4,067	1,937	2,325	3,399	2,118	3,380	3,606	8	0	1,255	2,190	1,129	1,243	1,489	1,489	5,889	5,889	12
JAPAN	27,466	29,574	26,110	29,248	23,021	25,685	26,076	20,942	17,653	16,619	17,722	16,917	12,991	15,564	14,316	11,467	11,471	12,005	10,639	8,862	8,305	6,561	7,535	17,765	17,765	16
KIRIBATI	0	0	1	0	0	0	0	44	0	3	155	800	582	268	556	603	287	423	1,292	1,570	625	2,707	3,806			4
MARSHALL ISLANDS	0	0	0	1	0	0	3	375	381	257	259	335	80	0	0	700	1,229	1,146	1,458	764	928	1,173	1,428			4
NAURU	6	3	10	0	0	0	0	0	0	0	0	0	0	0	0	0	0	0	0	0	0	0	0			4
NEW CALEDONIA	128	189	142	90	76	35	53	63	51	44	41	49	51	58	63	74	48	46	40	51	59	67	40			4
NEW ZEALAND	481	201	204	177	175	177	213	133	253	132	174	154	109	122	122	177	97	135	50	67	85	50	153			7
NIUE	0	0	0	0	10	22	35	51	10	4	0	0	0	0	0	0	0	0	0	0	0	0	0			4
NORTHERN MARIANAS	0	0	0	0	0	0	0	0	0	0	0	0	492	1,000	1,000	879	999	993	999	926	1,500	544	1,205			4
PALAU	21	1	1	7	0	0	0	0	0	0	0	0	0	0	0	0	1,106	1,011	855	1	17	10	3			4
PAPUA NEW GUINEA	240	318	390	399	237	216	111	201	128	39	59	119	32	52	15	86	47	87	162	17	0	179	254			4
PHILIPPINES	59	59	59	59	59	59	59	59	59	59	777	248	167	63	0	0	0	0	0	0	0	0	0			6,7
REPUBLIC OF KOREA	22,172	28,533	17,151	17,941	15,622	12,489	10,054	17,001	15,231	13,914	15,282	18,823	12,818	12,779	10,689	11,018	10,220	13,828	13,711	13,011	13,685	12,986	13,759	13,942	13,942	4
SAMOA	185	137	110	104	64	128	101	106	117	108	71	54	36	48	48	62	150	62	161	156	108	127	206			4
SENEGAL	0	0	0	0	0	3	2	0	0	0	0	0	0	0	0	0	0	0	0	0	0	0	0			4
SOLOMON ISLANDS	187	401	385	294	3	0	0	0	806	213	0	0	3,054	4,390	384	0	1,235	1,398	623	635	874	947				4,11
TONGA	191	215	94	40	125	117	129	81	38	24	18	10	7	22	25	27	24	34	16	10	15	24	14			4
TUVALU	0	0	0	0	0	0	0	0	0	0	105	1,408	120	76	187	103	111	64	53	9	23	0	0			4
CHINESE TAIPEI	12,435	16,645	14,429	20,992	15,498	14,295	14,760	15,229	13,319	11,874	11,275	10,994	10,600	10,018	9,434	9,488	9,672	9,069	8,876	7,152	7,330	9,560	8,828	10,481	10,481	11
USA	2,418	4,396	3,618	4,181	4,462	4,381	5,381	4,649	3,741	3,577	3,565	3,660	3,612	3,823	3,427	3,747	2,968	3,393	3,460	3,550	3,750	3,238	3,553	3,554	3,554	13, 15
VANUATU	37	396	841	2,045	2,045	1,815	1,885	1,143	1,398	2,060	2,061	2,151	1,989	3,518	7,366	3,509	3,940	3,132	2,241	2,216	3,039	2,117	2,190			4
WALLIS AND FUTUNA	0	0	0	0	0	0	0	0	0	0	6	0	0	0	0	0	0	0	0	0	0	0	0			4
<b>Total</b>	<b>73,958</b>	<b>89,177</b>	<b>78,914</b>	<b>93,668</b>	<b>74,298</b>	<b>78,153</b>	<b>75,665</b>	<b>78,018</b>	<b>75,766</b>	<b>68,837</b>	<b>71,754</b>	<b>78,238</b>	<b>60,982</b>	<b>69,270</b>	<b>70,141</b>	<b>57,016</b>	<b>55,676</b>	<b>63,086</b>	<b>63,897</b>	<b>53,298</b>	<b>50,950</b>	<b>52,656</b>	<b>54,158</b>	<b>60,355</b>	<b>60,355</b>	
VIETNAM	1,450	614	2,129	2,781	3,527	3,538	3,648	3,358	2,992	2,441	3,424	3,761	2,260	2,350	3,100	1,115	1,004	902	1,554	2,678	2,275	2275	602			9

**Notes:**

1. Source: WCPFC Annual catch estimates as at 2<sup>nd</sup> July 2023.
2. Catch estimates in **red** have been carried over from previous years.
3. Indonesia and Philippines may revise estimates for previous years. (see the respective Annual Catch Estimate Workshop reports at (<http://www.wcpfc.int/west-pacific-east-asia-oceanic-fisheries-management-project>))
4. The limits in the columns labelled “CMM limits for 2017” and “CMM limits for 2018” do not apply to small island developing State members and participating Territories according to paragraph 7 of CMM 2014-01 and CMM 2015-01 (or its replacement CMM).
5. Catches and effort of vessels operating under charters and similar arrangements have been attributed to host island states or territories in accordance with paragraph 5 of CMM 2012-01 and paragraph 5 CMM 2013-01 using the best information available to SPC-OFP. However, in several cases, catches have not yet been attributed to the CCM responsible for the "charter or similar arrangements" since the flag state CCM has yet to advise that it has excluded these catches from their data (and thereby avoid double-counting).
6. Estimates include archipelagic water catches which for some countries cannot be separated at this stage.
7. The catch limits established at 2,000t prior to 2010, remain at the level of 2,000t for relevant WCPFC members. (according to CMM 2008-01 Para. 32, CMM 2012-01 para 26 and CMM 2013-01 para 41 and its replacement CMM, including CMM 2017-01). Note although EU fleets are reported here separately by flag, it is understood that as per the relevant CMM the 2000 Mt limit applies to the combined EU-longline fleet.
8. Subject to CNM on participatory rights, in accordance with paragraph 6 of CMM 2014-01 and CMM 2015-01 (or its replacement CMM) for years from 2015 onwards.
9. The Vietnam longline fleet are understood to fish outside the WCPFC Convention Area (South China Sea).
10. Catches by the Chinese longline fleet in the Kiribati EEZ are included in the estimates.
11. Catches by chartered Chinese, Fijian and Chinese-Taipei flagged longline vessels licensed to fish in Solomon Islands waters have been attributed to the Solomon Islands according to the respective WCPFC Charter notifications.
12. Indonesia bigeye tuna catch excludes catches in Archipelagic waters.
13. USA revised limit for 2015 was 3504 t., to take into account the overage in bigeye catch from 2014
14. "CMM limits for 2017" is according to ATTACHMENT F in CMM 2016-01, and refer to catch limits for 2017 only, and “CMM limits for 2018” is according to Table 3 in CMM 2017-01 or its replacement measure.
15. USA advised by letter to the WCPFC Secretariat that they reduced their 2017 bigeye catch limit (of 3,345 Mt in Att F of CMM 2016-01) to 3,138Mt to offset the overage in 2016.
16. CMM 2017-01 Table 3, CMM 2018-01, CMM 2020-01 and CMM 2021-01 Attachment 1 Table 3, includes this note: Japan will make an annual one-off transfer of 500 metric tonnes of its bigeye tuna catch limit to China.

**Table 7. Reported longline catches (metric tonnes) of yellowfin tuna in the WCPFC-CA, by flag.**

Table 7. Reported longline catches (metric tonnes) of yellowfin tuna in the WCPFC-CA, by flag.

CCM	2001	2002	2003	2004	2005	2006	2007	2008	2009	2010	2011	2012	2013	2014	2015	2016	2017	2018	2019	2020	2021	2022	2023	Av. 2001-2004	See Notes	
AMERICAN SAMOA	188	485	497	888	526	513	640	333	398	473	699	620	422	454	360	561	871	470	409	383	521	332	418	515	(4)	
AUSTRALIA	2,819	3,531	3,681	2,356	1,499	1,830	1,390	1,650	1,387	1,359	1,858	1,259	1,341	1,685	2,177	1,734	1,666	1,312	1,951	1,749	1,449	1,454	1,615	3,097	(6)	
BELIZE	957	720	943	208	298	106	273	129	121	28	13	30	21	0	0	0	0	0	0	0	0	0	0	707	(6)	
CHINA	1,919	1,844	3,358	4,048	2,446	4,055	2,768	5,007	7,958	2,576	4,598	6,004	4,638	5,949	6,226	6,559	8,526	9,031	10,010	10,115	9,530	9,560	14,013	2,792	(9), (10)	
COOK ISLANDS	1	42	178	506	413	262	290	247	197	192	394	693	346	504	339	315	610	532	403	362	309	209	30	182	(4)	
EU-PORTUGAL	0	0	0	0	0	0	0	0	0	0	0	0	2	22	4	6	0	0	0	0	0	0	0	0	0	(13)
EU-SPAIN	0	0	0	23	1	127	127	10	7	3	0	2	2	11	10	28	7	13	20	33	40	42	72	6	(13)	
FIM	338	164	276	185	99	270	548	328	583	515	750	750	850	1,639	1,691	1,771	1,416	2,395	4,692	2,010	1,729	1,915	993	241	(4)	
FIJI	2,082	2,027	2,482	4,164	2,591	2,231	1,721	2,763	3,440	2,602	4,051	3,188	2,203	4,343	3,647	4,701	4,986	2,738	3,833	4,564	2,662	2,127	2,225	2,689	(4)	
FRENCH POLYNESIA	967	507	621	1,066	793	690	527	447	716	418	491	758	615	783	1,093	968	1,434	1,314	1,364	1,135	2,350	1,373	1,480	790	(4)	
GUAM	0	0	0	0	0	0	0	0	0	0	0	0	0	0	0	0	0	0	0	0	0	0	0	0	(4)	
INDONESIA	4,001	6,243	9,209	9,313	10,679	9,743	10,209	12,873	18,154	13,325	13,124	11,938	9,012	13,353	18,604	5,632	120	7,707	4,382	427	682	1,131	1,131	7,192	(12)	
JAPAN	18,096	15,810	16,803	15,209	14,792	13,462	13,725	12,365	14,039	17,466	11,427	10,621	8,268	6,494	8,683	10,166	10,099	10,109	10,940	6,070	7,853	8,289	7,252	16,480	(4)	
KIRIBATI	2	0	2	0	0	0	0	7	0	4	140	300	175	108	405	610	359	220	862	1,279	904	2,535	2,099	1	(4)	
MARSHALL ISLANDS	0	0	0	3	0	0	2	91	120	117	99	113	47	0	0	578	948	707	1,175	743	634	964	676	1	(4)	
NAURU	5	2	6	1	0	0	0	0	0	0	0	0	0	0	0	0	0	0	0	0	0	0	0	4	(4)	
NEW CALEDONIA	570	572	754	631	448	414	393	424	487	505	585	573	531	741	852	482	559	467	678	512	624	588	459	632	(4)	
NEW ZEALAND	131	27	39	36	36	3	25	11	3	6	3	1	1	2	2	55	10	20	5	10	22	7	36	58	(4)	
NIUE	0	0	0	0	34	42	43	40	20	8	0	0	0	0	0	0	0	0	0	0	0	0	0	0	(4)	
NORTHERN MARIANAS	0	0	0	0	0	0	0	0	0	0	0	0	93	0	0	0	0	0	0	0	0	0	0	0	(4)	
PALAU	41	3	19	28	0	0	0	0	0	0	0	0	0	0	0	0	1,352	1,887	1,644	0	16	14	5	23	(4)	
PAPUA NEW GUINEA	1,812	1,738	1,747	2,318	1,222	2,139	1,539	2,259	2,714	2,147	2,303	2,961	1,041	1,568	891	728	1,249	2,070	1,479	116	0	1,779	1,214	1,904	(4)	
PHILIPPINES	484	484	484	484	484	484	484	484	484	484	146	61	27	153	0	0	0	0	0	0	0	0	0	0	484	(5)
REPUBLIC OF KOREA	13,768	15,497	12,134	10,058	13,329	9,529	8,817	7,846	10,032	7,644	7,881	7,832	5,716	8,371	9,352	8,054	7,008	6,519	13,847	10,948	10,340	11,516	8,514	12,864	(4)	
SAMOA	470	369	293	444	199	264	305	317	412	386	395	234	330	231	252	244	644	401	547	642	384	370	517	394	(4)	
SENEGAL	0	0	0	0	6	3	4	0	0	0	0	0	0	0	0	0	0	0	0	0	0	0	0	0	(7)	
SOLOMON ISLANDS	159	401	258	440	6	0	0	0	0	5,159	643	0	0	12,536	15,923	2,130	0	4,451	5,094	2,732	3,288	5,470	4,947	315	(4), (10)	
TONGA	259	263	263	163	219	227	341	291	109	47	171	140	126	195	297	325	373	201	186	156	208	215	166	237	(4)	
TUVALU	0	0	0	0	0	0	0	0	0	0	286	453	114	41	166	124	164	106	76	16	9	0	0	0	(4)	
TWCHINESE TAIPEI	22,326	21,993	22,149	22,975	19,571	18,654	16,668	16,411	19,693	22,225	21,320	16,948	14,999	12,257	14,118	17,816	22,956	16,050	17,724	10,212	11,306	15,469	11,939	22,361	(10)	
USA	1,016	572	809	694	698	937	833	836	429	462	738	576	546	567	681	1,093	1,750	1,868	1,556	1,197	2,029	1,969	2,329	773	(4)	
VANUATU	78	778	1,315	1,762	1,147	1,368	1,049	878	817	939	1,601	2,230	1,768	1,695	2,700	1,740	1,437	1,269	1,325	849	901	578	469	983	(4)	
WALLIS AND FUTUNA	0	0	0	0	0	0	0	0	0	0	4	0	0	0	0	0	0	0	0	0	0	0	0	0	(4)	
Total	72,489	74,072	78,320	78,003	71,536	67,353	62,721	66,047	82,320	79,090	73,720	68,285	53,234	73,702	88,473	66,420	68,544	71,857	84,202	56,260	57,790	67,906	62,599	75,721	(8)	
VIETNAM	8,292	9,756	8,179	11,122	10,895	10,930	11,270	10,375	9,244	9,513	10,576	12,456	13,917	11,603	15,097	16,423	15,677	16,500	14,653	14,118	13,822	13,822	18,054		(8)	

**Notes:**

1. Source: WCPFC Annual catch estimates as at 2<sup>nd</sup> July 2023.
2. Catch estimates in **red** have been carried over from previous years.
3. Indonesia and Philippines may revise their estimates for recent years through their annual catch estimates review processes. (see the respective Annual Catch Estimate Workshop reports at <http://www.wcpfc.int/west-pacific-east-asia-oceanic-fisheries-management-project>)
4. Catches and effort of vessels operating under charters and similar arrangements have been attributed to host island states or territories in accordance with paragraph 2 of CMM 2008-01 (paragraph 5 of CMM 2012-01, paragraph 5 of CMM 2013-01 or its replacement CMM) using the best information available to SPC-OFP. However, in several cases, catches have not yet been attributed to the CCM responsible for the "charter or similar arrangements" since the flag state CCM has yet to advise that it has excluded these catches from their data (and thereby avoid double-counting).
5. Estimates include archipelagic water catches which for some countries cannot be separated at this stage.
6. Subject to CNM on participatory rights, in accordance with paragraph 6 of CMM 2014-01 (or its replacement CMM) for years from 2015 onwards. Belize is not presently a CNM.
7. Senegal committed to limiting its fishing activities in the WCPFC Convention Area to one longline vessel - WCPFC5 Report (Para. 44). Senegal is not presently a CNM.
8. The Vietnam longline fleet are understood to fish outside the WCPFC Convention Area (South China Sea).
9. Catches by the Chinese longline fleet in the Kiribati EEZ are included in the estimates.
10. Catches by chartered Chinese and Chinese-Taipei flagged longline vessels licensed to fish in Solomon Islands waters have been attributed to the Solomon Islands according to the respective WCPFC Charter notifications.
11. Does not yet cover development of new fisheries in the waters of small-island developing states (e.g. Tokelau)
12. Indonesia yellowfin tuna catch excludes catches in Archipelagic waters.
13. Note although EU fleets are reported here separately by flag, it is understood that as per the relevant CMM applicable limits apply to the combined EU-longline fleet.

**Table 8. Longline effort (100s of hooks) in the tropical WCPFC LONGLINE fishery (20°N-10°S), by fleet.**

FLEET	LONGLINE EFFORT (100s of Hooks)													
	2010	2011	2012	2013	2014	2015	2016	2017	2018	2019	2020	2021	2022	2023
CK	13,419	16,804	32,820	16,869	10,880	11,761	25,750	20,672	21,581	19,477	18,855	14,270	11,554	580
CN	558,006	741,473	838,710	653,129	554,203	856,023	643,894	490,233	808,130	594,763	550,945	489,001	390,149	242,917
FJ	27,971	91,027	167,297	135,836	129,685	83,827	84,674	45,609	30,099	73,636	43,490	17,900	18,026	15,944
FM	84,856	94,585	110,622	85,577	123,969	149,576	165,616	167,453	361,895	328,347	255,019	186,152	128,931	97,607
JP	591,064	544,103	513,559	453,791	393,622	347,415	279,823	287,198	306,046	298,175	187,537	196,056	177,955	196,700
KI	0	19,590	50,227	27,577	23,868	38,272	55,215	45,625	40,555	73,294	110,161	71,826	226,190	187,105
KR	728,923	803,711	771,118	626,901	599,181	506,812	587,473	473,750	568,150	591,577	547,661	542,262	562,984	556,624
MH	16,884	16,819	20,692	6,286	0	585	63,153	138,811	104,151	95,914	80,035	73,114	99,583	119,385
PF	0	242	147	245	437	18	1,138	13,324	5,180	3,656	1,456	11,393	11,777	4,994
PG	24,590	51,649	40,194	15,029	19,576	7,883	4,494	2,789	35,335	30,785	2,473	0	39,287	56,507
PW	0	0	0	0	0	0	626	86,620	107,141	92,157	109	0	878	526
SB	14,795	12,759	5,497	3,942	254,915	306,150	24,030	18,036	209,676	204,156	90,006	112,352	160,102	184,770
TV	3,436	26,925	69,185	16,219	16,809	18,844	12,927	15,814	12,347	8,011	1,305	1,684	30	0
TW	1,116,368	1,542,611	1,712,385	1,241,350	1,016,134	1,207,708	1,291,017	1,481,191	1,126,484	1,172,267	799,506	914,510	1,130,735	907,970
US	127,123	135,207	152,755	128,813	147,947	181,508	240,442	217,887	165,377	323,721	285,541	371,668	421,118	518,708
VU	78,910	92,142	134,228	196,392	140,527	306,967	212,683	138,553	120,519	112,212	72,992	43,245	67,160	49,170
	3,386,345	4,189,649	4,619,437	3,607,955	3,431,751	4,023,349	3,692,954	3,643,565	4,022,666	4,022,146	3,047,093	3,045,434	3,446,458	3,139,506

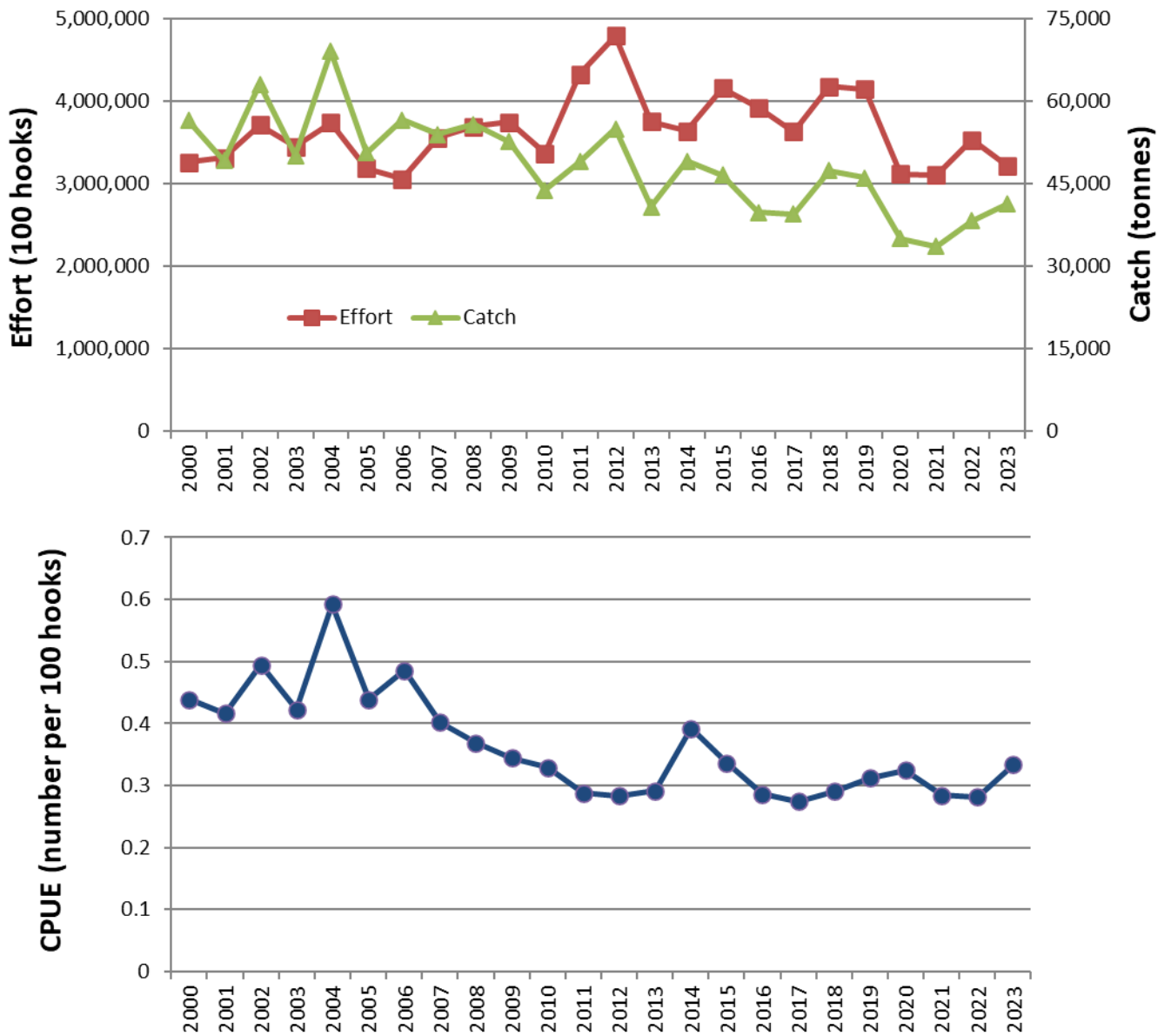
**Notes:**

1. Estimates are based on available aggregate data for the WCPFC Area, 20°N-10°S.
2. Estimates exclude domestic longline effort for Philippines, Indonesia and Vietnam fleets.
3. Excluding vessels targeting South Pacific Albacore is not possible at this stage for a number of reasons – the main reason being the lack of operational data. In the absence of complete operational data (which would include targeting information), the area 20°N-10°S has been selected as the area which best minimises both South and North Pacific albacore targeting.

**Fleet Codes**

CK	- Cook Islands
CN	- China
FJ	- Fiji
FM	- FSM
JP	- Japan
KI	- Kiribati
KR	- Korea
MH	- Marshall Is.
PF	- French Polynesia
PG	- PNG
PW	- Palau
SB	- Solomon Is.
TV	- Tuvalu
TW	- Chinese Taipei
US	- USA
VU	- Vanuatu

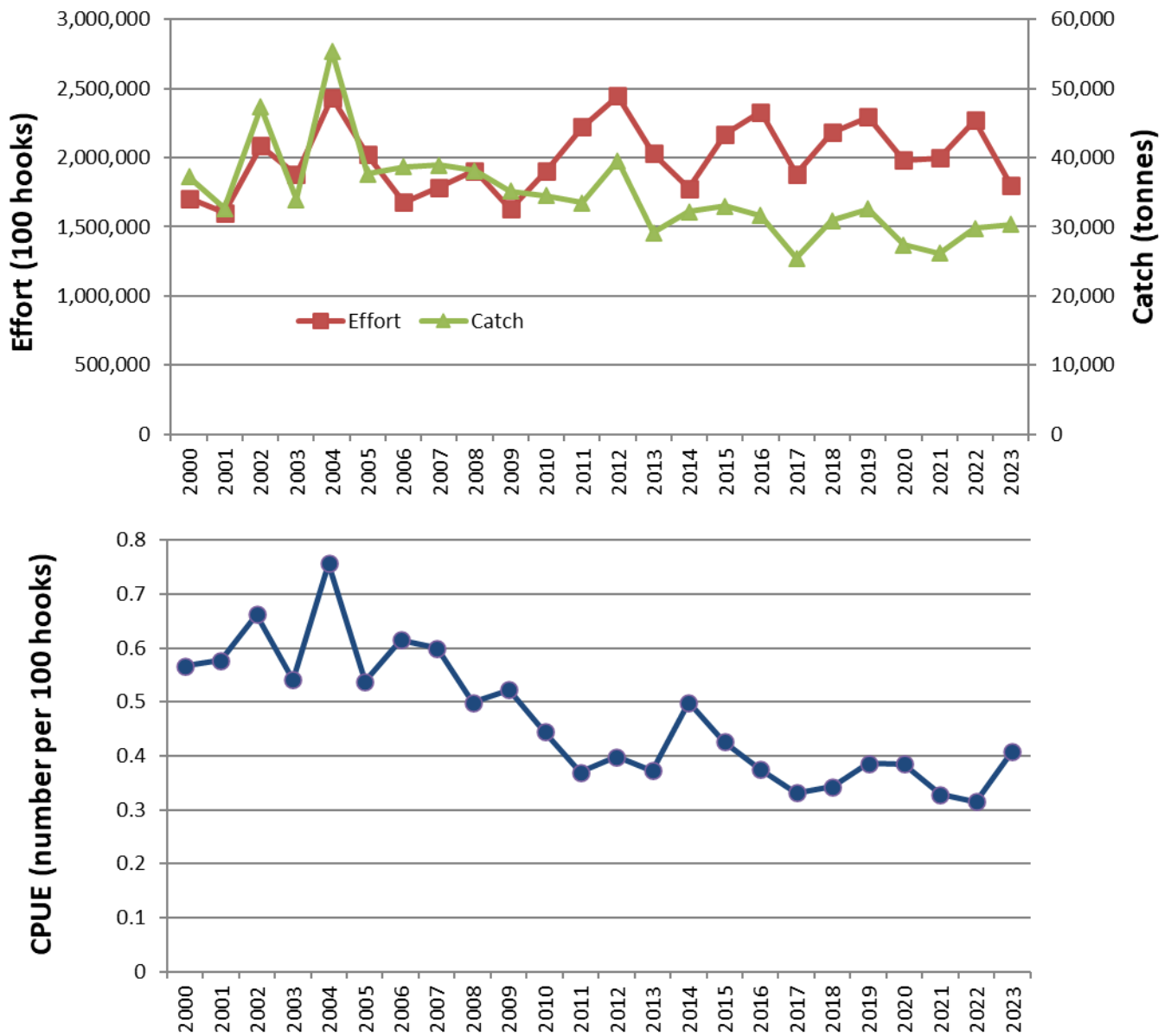




**Figure 13. Estimates of effort, bigeye catch and nominal CPUE for the CORE tropical WCPFC longline fishery**

**CORE Area is (130°E - 150°W, 20°N - 10°S).**

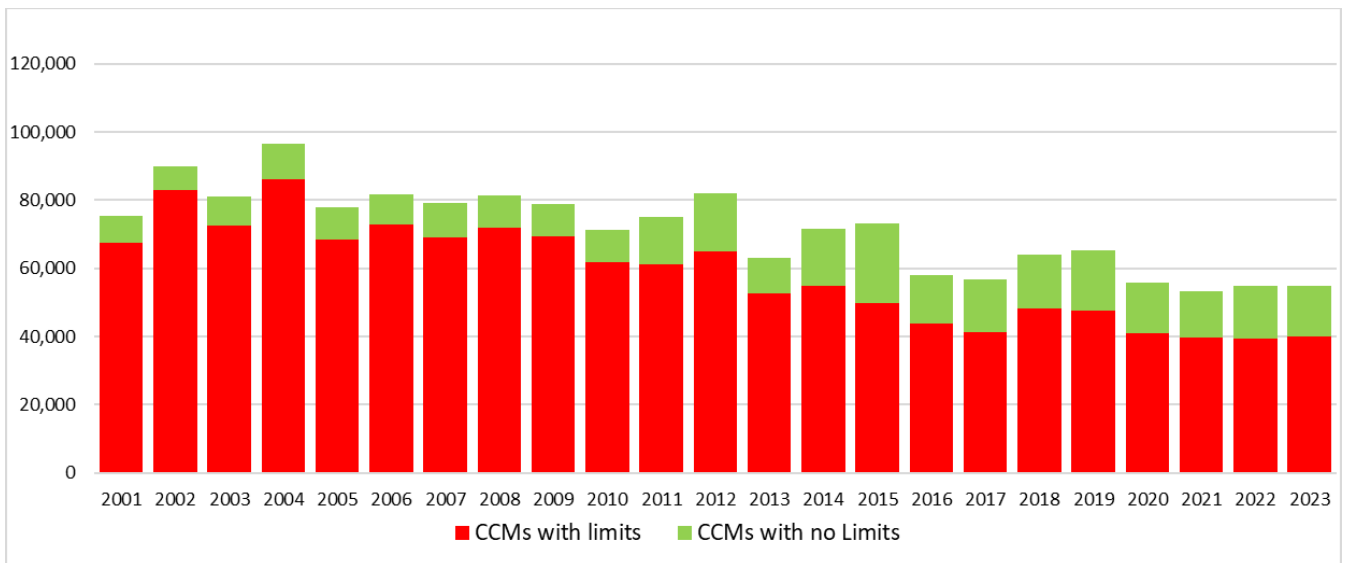
2023 data are provisional. Excludes Indonesia and Vietnam domestic fisheries where effort is not available.



**Figure 14. Estimates of effort, bigeye catch and nominal CPUE for the EASTERN tropical WCPFC longline fishery**

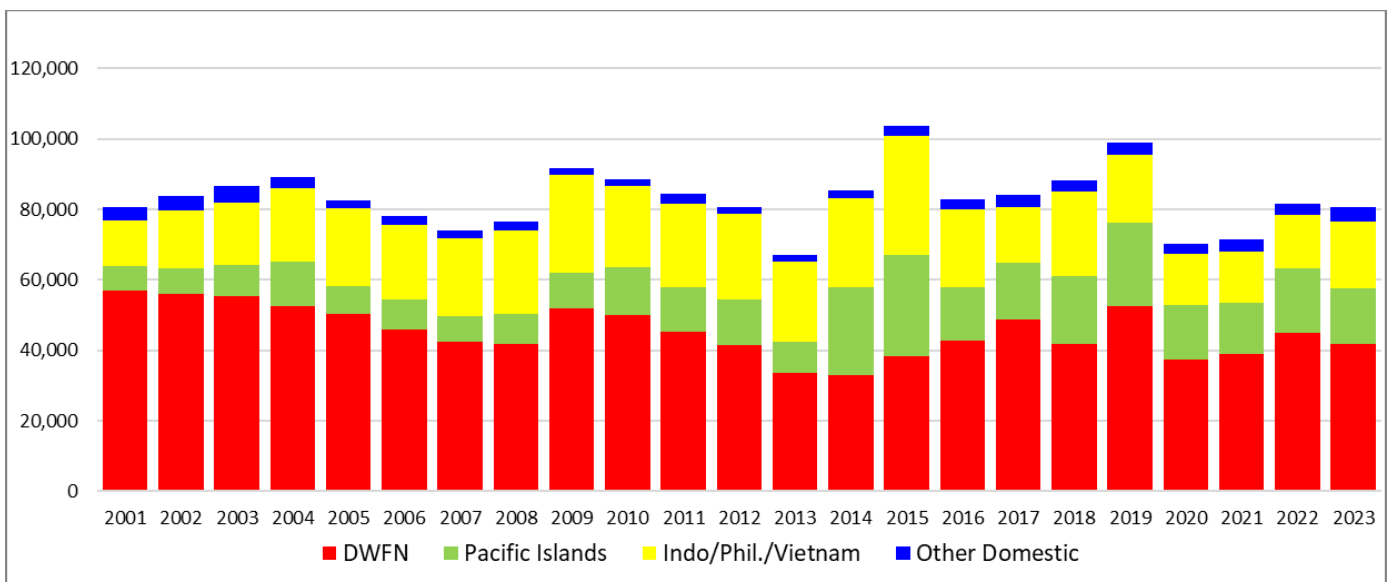
**Eastern Area is (170°E - 150°W, 20°N - 10°S).**

2023 data are provisional. Excludes Indonesia and Vietnam domestic fisheries where effort is not available.



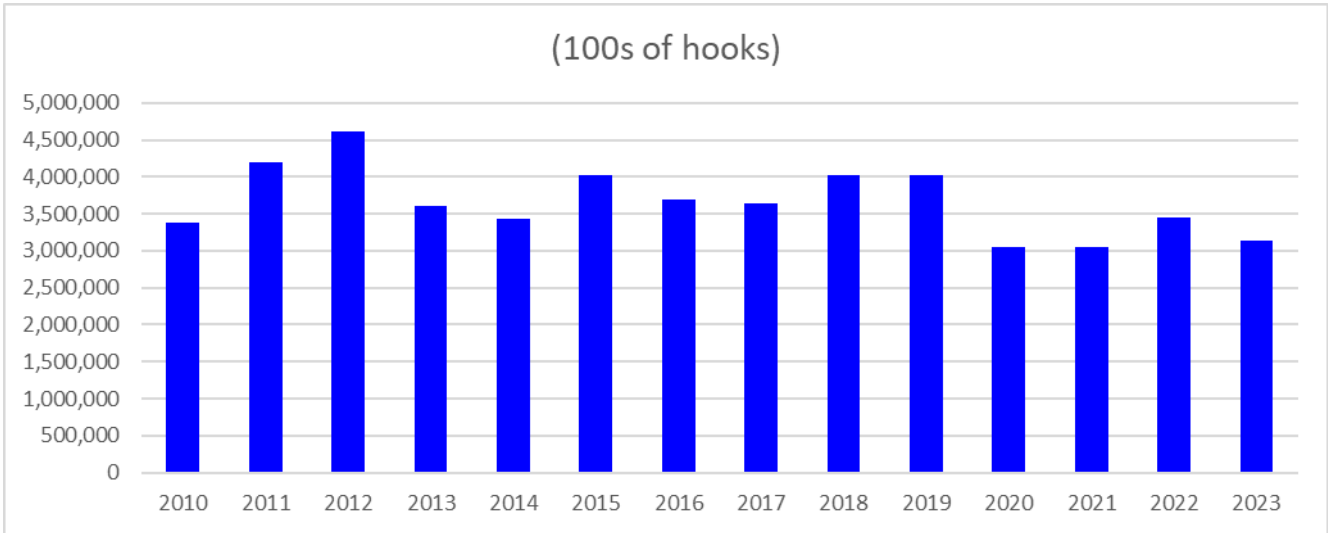
**Figure 15. Reported longline catches (metric tonnes) of bigeye tuna in the WCPFC-CA, by fleet category.**

*(Refer to NOTES under TABLE 6 above;  
Vietnam catch is included in "CCMs with no limits")*



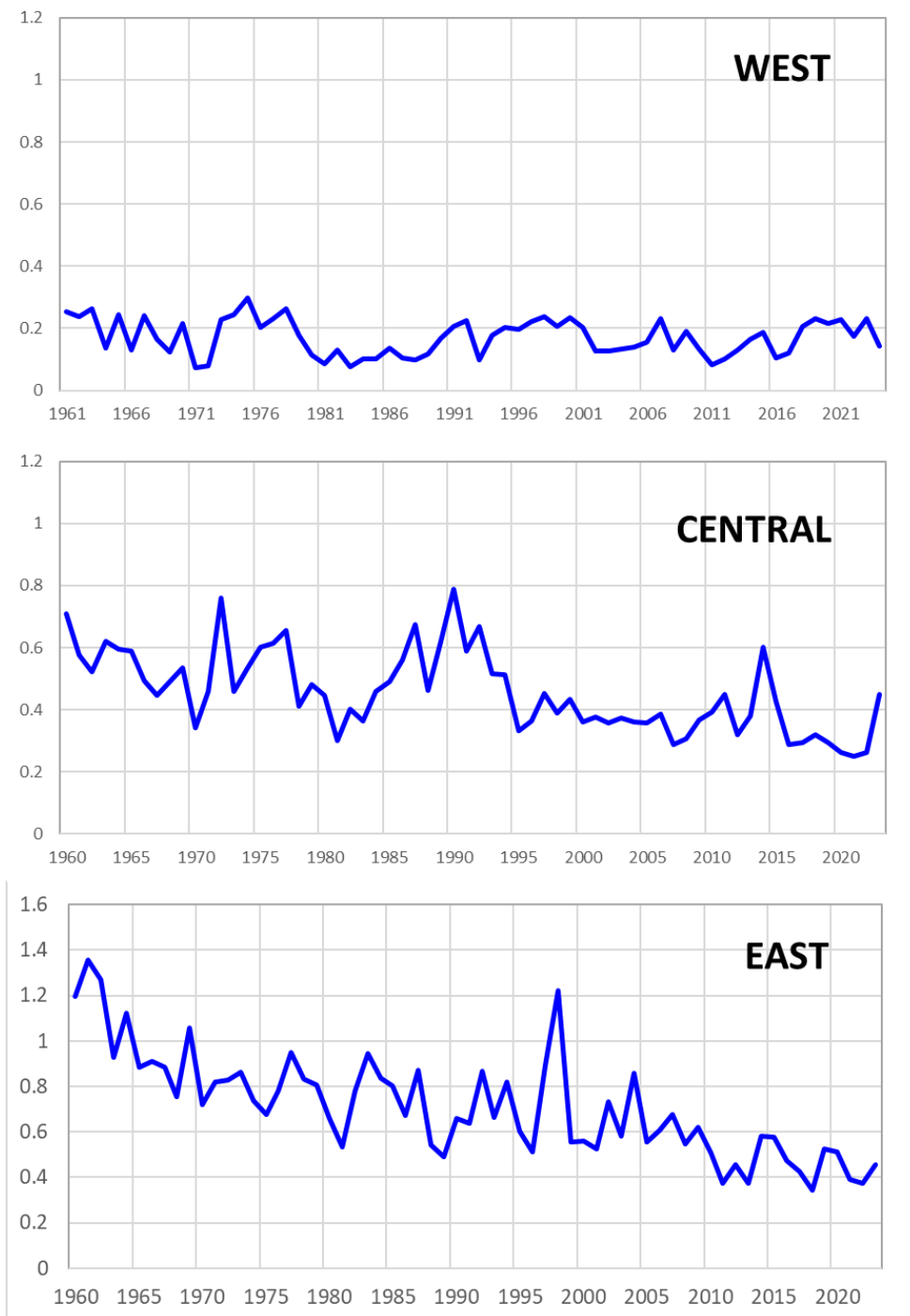
**Figure 16. Reported longline catches (metric tonnes) of yellowfin tuna in the WCPFC-CA, by fleet category.**

*(Refer to NOTES under TABLE 7 above;  
Vietnam catch is included)*



**Figure 17. Longline effort (100s of hooks) in the tropical WCPFC LONGLINE fishery (20°N-10°S), 2010-2023.**

*(Refer to NOTES under TABLE 8 above)*



**Figure 18. Annual trends in nominal bigeye tuna CPUE in the tropical WCPFC LONGLINE fishery (20°N-10°S)**

**CPUE in number per 100 hooks**

**By assessment region**

- “WEST” – Assessment Region 7: 10°S–20°N, 110°–140°E
- “CENTRAL” – Assessment Region 3: 10°S–10°N, 130°–170°E
- “EAST” – Assessment Region 4: 10°S–10°N, 170°E–150°W

### 3. Other Commercial fisheries information

**Table 9. Tropical tuna catch estimates for OTHER FISHERIES relevant to the tropical tuna measure**

**Table 9. Total tropical tuna catch estimates for OTHER COMMERCIAL FISHERIES (excl. Purse seine and Longline) in the WCPFC Statistical Area, relevant to CMM 2018-01.**

GEAR	FLAG	Total Catch (MT)			Area Note	Availability of EFFORT data	See NOTE
		CMM 2021-01 limit	2023	Evaluation			
HANDLINE	INDONESIA	...	...	...	<i>Within EEZ only, excluding AWs</i>	NO	5
HANDLINE (LARGE-FISH)	PHILIPPINES	13,343	2,028	Within Limit	<i>Within EEZ only, excluding AWs</i>	NO	6
POLE-AND-LINE	INDONESIA	41,025	6,392	Within Limit	<i>Within EEZ only, excluding AWs</i>	NO	7
POLE-AND-LINE	JAPAN	114,573	53,829	Within Limit		YES	2, 4

**Notes:**

1. Source: Annual catch estimates; Philippines National Stock Assessment Project (NSAP data); Aggregate logsheet data. 2023 data are provisional.
2. The column labeled “CMM 2020-01” is the maximum value of either (i) the average total skipjack, yellowfin and bigeye tuna catch for 2001-2004, or (ii) 2004.
3. The definition for "Commercial" fisheries, at this stage, includes all fisheries other than purse seine and longline fisheries, until otherwise advised. (Refer to Table 6b.).
4. Advice from Japan -- “Paragraph 9 of CMM 2012-01 provides that this measure applies to all areas of high seas and EEZs in the Convention Area. Therefore, this paragraph does not apply to troll fishery, which operate within territorial sea.
  - Regarding pole-and-line fishery and purse seine north of 20N fishery JFA ensure that the total effort and capacity of these tuna fisheries shall not exceed the average level for the period 2001-2004 or 2004 under its licensing system.
  - Therefore JFA consider fulfilling this requirement.
  - JFA submits following information of pole-and-line fishery and purse seine north of 20N fishery as attached. On the other hand JFA does not agree with the Secretariat view to consider non provision of these data as a potential compliance issue because it is not required under this paragraph.  
Effort data (2001-2004 average, 2004 and 2013)  
Catch data (2001-2004 average, 2004 and 2013)”
5. Indonesia has advised that HANDLINE (hook-and-line) vessels that target small-fish at the surface should not be considered in the "Commercial" category since they are artisanal/subsistence fisheries. However, Indonesia can only provide a catch estimate for the combined small-fish (artisanal) and large fish handline fishery and it is not yet possible to differentiate the large-fish handline catch estimate from this combined total. Also, it is not yet possible to separate out the catches of what might be considered the 'commercial component' of the Handline fishery that are relevant to the tropical tuna measure - that is Indonesian waters outside Archipelagic waters (AWs) and Territorial Seas (TS).
6. The large-fish handline catch for the Philippines outside of archipelagic waters and territorial seas has been determined from the proportion of annual tuna catch outside AWs/TS from data collected from Philippines National Stock Assessment Project (NSAP data : 1997-2023), and specifically based on landings by Philippines Fisheries Management Area (FMAs) and Fishing Ground. There is often considerable inter-annual variation in the activity of this fleet inside and outside archipelagic waters, mainly depending on weather and sea conditions.
7. The 2023 catch estimates for the Indonesia pole-and-line fishery is provisional.

**Table 10. Tropical tuna catch estimates for OTHER FISHERIES deemed exempt from the tropical tuna measure**

(excl. Purse seine and Longline in the WCPFC Statistical Area)

**Table 10. Total tropical tuna catch estimates for OTHER FISHERIES (excl. Purse seine and Longline) in the WCPFC Statistical Area, which are exempt from CMM 2018-01 OTHER COMMERCIAL FISHERIES.**

GEAR	FLAG	Tuna catch (MT)		Reason for exemption
		2023	Average 2018-2023	
GILLNET	JAPAN	151	123	Less than 2,000 t.
GILLNET	VIETNAM	12,445	21,863	Outside of the WCPFC Convention Area
HANDLINE (LARGE-FISH)	UNITED STATES OF AMERICA	389	458	Less than 2,000 t.
HOOK-AND-LINE (SMALL-FISH)	PHILIPPINES	0	0	Within territorial seas and/or archipelagic waters only
POLE-AND-LINE	AUSTRALIA	0	0	Less than 2,000 t.
POLE-AND-LINE	FIJI	0	0	Less than 2,000 t.
POLE-AND-LINE	FRENCH POLYNESIA	209	218	Less than 2,000 t.
POLE-AND-LINE	KIRIBATI	0	0	Less than 2,000 t.
POLE-AND-LINE	NEW ZEALAND	0	0	Less than 2,000 t.
POLE-AND-LINE	SOLOMON ISLANDS	0	78	Less than 2,000 t.
POLE-AND-LINE	UNITED STATES OF AMERICA	0	0	Less than 2,000 t.
Small scale/artisanal/recreati	AUSTRALIA	0	0	Less than 2,000 t. and within territorial seas and/or archipelagic waters only
Small scale/artisanal/recreati	FIJI	0	0	Less than 2,000 t. and within territorial seas and/or archipelagic waters only
Small scale/artisanal/recreati	FRENCH POLYNESIA	1,119	1,084	Less than 2,000 t. and within territorial seas and/or archipelagic waters only
Small scale/artisanal/recreati	INDONESIA	51,824	41,032	Within territorial seas and/or archipelagic waters only
Small scale/artisanal/recreati	JAPAN	1,785	1,607	Less than 2,000 t. and within territorial seas and/or archipelagic waters only
Small scale/artisanal/recreati	KIRIBATI	4,359	4,359	Within territorial seas and/or archipelagic waters only
Small scale/artisanal/recreati	NAURU	38	22	Less than 2,000 t. and within territorial seas and/or archipelagic waters only
Small scale/artisanal/recreati	NEW ZEALAND	0	0	Less than 2,000 t. and within territorial seas and/or archipelagic waters only
Small scale/artisanal/recreati	NIUE	2	1	Less than 2,000 t. and within territorial seas and/or archipelagic waters only
Small scale/artisanal/recreati	PHILIPPINES	0	0	Less than 2,000 t. and within territorial seas and/or archipelagic waters only
Small scale/artisanal/recreati	TOKELAU	19	44	Less than 2,000 t. and within territorial seas and/or archipelagic waters only
Small scale/artisanal/recreati	TONGA	92	31	Less than 2,000 t. and within territorial seas and/or archipelagic waters only
Small scale/artisanal/recreati	TUVALU	348	348	Less than 2,000 t. and within territorial seas and/or archipelagic waters only
Small scale/artisanal/recreati	VANUATU	339	176	Less than 2,000 t. and within territorial seas and/or archipelagic waters only
Small scale/artisanal/recreati	WALLIS AND FUTUNA	4	11	Less than 2,000 t. and within territorial seas and/or archipelagic waters only
TROLL	AUSTRALIA	0	0	Less than 2,000 t.
TROLL	CANADA	0	0	Less than 2,000 t.
TROLL	COOK ISLANDS	200	173	Less than 2,000 t. and within territorial seas and/or archipelagic waters only
TROLL	JAPAN	4,399	3,794	Less than 2,000 t. and within territorial seas and/or archipelagic waters only
TROLL	NEW ZEALAND	11	8	Less than 2,000 t.
TROLL	UNITED STATES OF AMERICA	732	868	Less than 2,000 t.

**Notes:**

1. Source: Annual Catch estimates. 2023 data are provisional.
2. Fisheries with average catches less than 2,000 t of bigeye, yellowfin and skipjack tuna, have been excluded as per CMM 2018-01, CMM 2020-01 and CMM 2021-01 para 51.
3. The definition for "Commercial" fisheries, at this stage, includes all fisheries other than purse seine and longline fisheries, until otherwise advised.
4. Indonesia has advised a range of their small scale/Artisanal fisheries (e.g. troll, small-fish hook-and-line, gillnet) should not be considered in the category "Commercial" Fisheries.
5. The Philippines has advised a range of their small scale/Artisanal fisheries (e.g. troll, small-fish hook-and-line, gillnet, beach seine) operate wholly in their archipelagic waters and/or territorial seas and should not be considered in the category "Commercial" Fisheries.
6. The Indonesia and Philippines catch estimates exclude catches in archipelagic waters. Catches for some other fleets listed here are acknowledged to be in their archipelagic waters and/or territorial seas and will be confirmed with respective member countries (e.g. Kiribati).

#### 4. ANNEX

**Table A1. Notes on major recent changes to tables/figures**

No.	Table Caption	Notes on major revisions between WCPFC20 and SC20	Notes on major revisions between SC20 and WCPFC21
<b>ALL TABLES</b>			
<b>Table 1</b>	PURSE SEINE days fished in waters under national jurisdiction and in International waters in the WCPFC-CA.	– Updated to include provisional 2023 data	–
<b>Table 2</b>	PURSE SEINE days fished in international waters in the WCPFC-CA between 20°N and 20°S, by flag, based on available operational data.	– Updated to include provisional 2023 data	–
<b>Table 3</b>	Estimated PURSE SEINE FAD sets undertaken in the tropical fishery of the WCPFC Convention Area (20°N-20°S), by flag, 2001-2023	– Updated to include provisional 2023 data	–
<b>Table 4</b>	Purse seine tuna catch and effort by set type and species in the WCPFC Convention Area between 20°N and 20°S, excluding domestic purse seine effort in Philippines, Indonesia and Vietnam.	– Updated to include provisional 2023 data	–
<b>Table 5</b>	Annual high seas FAD sets, by fleet, 2015–2023		–
<b>Table 6</b>	Reported LONGLINE catches (metric tonnes) of bigeye tuna in the WCPFC-CA, by flag.	– Updated to include provisional 2023 data	–
<b>Table 7</b>	Reported LONGLINE catches (metric tonnes) of yellowfin tuna in the WCPFC-CA, by flag.	– Updated to include provisional 2023 data	–
<b>Table 8</b>	Longline effort (100s of hooks) in the tropical WCPFC LONGLINE fishery.	– Updated to include provisional 2023 data	–
<b>Table 9</b>	Total tropical tuna catch estimates for OTHER COMMERCIAL FISHERIES (excl. Purse seine and Longline) in the WCPFC Statistical Area, relevant to CMM 2018-01.	– Updated to include provisional 2023 data	–
<b>Table 10</b>	Total tropical tuna catch estimates for OTHER FISHERIES (excl. Purse seine and Longline) in the WCPFC Statistical Area, which are exempt from CMM 2018-01 OTHER COMMERCIAL FISHERIES.	– Updated to include provisional 2023 data	–
<b>FIGURES</b>	[Figures corresponding to relevant tables above]	– Updated to include provisional 2023 data	–