



**SCIENTIFIC COMMITTEE
EIGHTEENTH REGULAR SESSION**

Online Meeting
10 –18 August 2022

ESTIMATES OF ANNUAL CATCHES IN THE WCPFC STATISTICAL AREA

WCPFC-SC18-2022/ST IP-1 rev. 1

Paper prepared by

Oceanic Fisheries Programme (OFP)
Pacific Community (SPC)
Noumea, New Caledonia

Revision 1

Updates to Tables 9 and 12–15 to correct skipjack catch estimates for the EPO in years 2020 and 2021

Introduction

Estimates of annual catches in the WCPFC Statistical Area (Figure 1) are presented for target tuna species, i.e., albacore (*Thunnus alalunga*) bigeye (*Thunnus obesus*), skipjack (*Katsuwonus pelamis*) and yellowfin (*Thunnus albacares*), and major billfish species, i.e., black marlin (*Makaira indica*), blue marlin (*Makaira mazara*), striped marlin (*Tetrapturus audax*) and swordfish (*Xiphias gladius*). Estimates of catches of southern bluefin tuna (*Thunnus maccoyii*) are compiled by the Commission for the Conservation of Southern Bluefin Tuna (CCSBT).

Target Tuna Species

Tables 1–7 and Figures 2 and 3 present estimates of annual catches of target tunas in the WCPFC Statistical Area. For a breakdown of recent catch estimates by gear and flag, see WCPFC (2021). For discussion regarding trends, see Williams and Ruaia (2022).

Past studies using observer data (e.g. Lawson, 2007, Lawson, 2010, Lawson, 2012, Hampton and Williams, 2017) show that the purse seine logsheet-reported catch, mainly for associated sets, should contain higher quantities of yellowfin and bigeye tuna that have been misreported as skipjack tuna. Purse-seine catch estimates that have been adjusted with species compositions determined from observer grab samples corrected for size selectivity bias (see Peatman et al., 2020 for the latest methodology) are presented as the official purse-seine catch estimates in Table 5. All composite tables and figures referring to purse-seine species catch are consistent with the Table 5 estimates of purse-seine catches of skipjack, yellowfin and bigeye tuna.

Tables 7–10 present estimates of annual catches of target tunas in the WCPO Area and the EPO Area (Figure 1) by gear type. Tables 11–13 present estimates of annual catches of target tunas for the WCPO, the EPO and the Pacific Ocean by species. Tables 14 and 15, and Figures 4 and 5 present global catches of target tunas, by species and ocean area, respectively.

Tuna Discards

Observer data have been used to determine the discard rates for albacore, bigeye and yellowfin caught by longliners (Table 16) and skipjack, yellowfin and bigeye caught by purse seiners (Table 17).

Tuna discards by longliners in the WCPFC Statistical Area during 1994–2021 were estimated by applying discard rates by flag and year, determined from observer data to tuna species catch estimates, by flag and year, and then summing the tuna discards (by species) across all flags. Discard rates for flag/year combinations where there were insufficient data (defined as (i) less than 10 observer trips or (ii) less than 500 fish samples available), were substituted with discard rates determined for that year with all flags combined.

The longline tuna discard rates estimated for 2020 and 2021 are based on observer data with reduced coverage due to the impacts of COVID-19, and so are more uncertain than recent years with higher observer coverage (in 2018-2019, for example; see Panizza et al., 2022).

The average discard rate for the three target tuna species caught by longliners during the period was 2.1%. During 2021, the estimated tuna discard was 2.0% and based on available observer data in recent years, most of the bigeye and yellowfin tuna discards comprised of fish less than 95 cm (Figures 6 and 7) which were too small to be commercially viable and were not kept due to limited storage space. Discards of larger tuna in the longline fishery are mainly due to predation by sharks and toothed whales.

Tuna discards by purse seiners in the WCPFC Statistical Area during 1995–2021 were estimated by applying discard rates by flag, year and school association (unassociated and associated), determined from observer data to tuna species catch estimates, by flag, year and school association, and then summing the tuna discards (by species) across all flags. Discard rates for flag/year/school association combinations where there were insufficient data (defined as (i) less than 5 observer trips or (ii) less than 1,000 mt of catch observed), were substituted with discard rates determined for school association (with all years/flags combined) for years prior to 2008 and substituted with discard rates determined for year/school association (with all flags combined) for

years since 2008. This method was used since an analysis of variance of discard rates for skipjack, yellowfin and bigeye caught by purse seiners indicated that species, school association and flag, but not year, were significant predictors. However, management measures (CMM 2009-02) were established to restrict the discard of tuna, which means that the year effect has since been considered in the estimation process.

The reduced coverage of purse seine observer data in recent years (2020: ~50% coverage and 2021: ~10% coverage) due to the impacts of COVID-19 will mean the purse seine tuna discard estimates for these years will be less reliable than the period where there was 100% observer coverage (see Panizza et al., 2022).

The average discard rate for the three target tuna species caught by purse seiners during this period was 2.2%, with an estimated 0.2% discarded in 2021. [Note that the reporting of purse-seine discards by vessel is a requirement under CMM 2009-02 and is currently independent to the estimates produced in this paper].

The submission of annual estimates of discards for the WCPFC key species is a mandatory requirement under the *Scientific Data to be Provided to the Commission*¹ covering data for years 2017 onwards.

Major Billfish Species

Table 18 presents estimates of commercial catches of the four major billfish species by gear type. Table 19 and Figure 8 present estimates of the major billfish catches for all gear types combined. Tables 20 and 21 present estimates of commercial catches of striped marlin and swordfish in the WCPFC Statistical Area north and south of the equator respectively. Table 22 presents estimates of commercial catches of albacore, striped marlin and swordfish in the Pacific Ocean, south of the equator.

¹ See https://www.wcpfc.int/system/files/Att%20G_Revised%20SciData%20decision.pdf

REFERENCES

- Hampton J. & P.G. Williams 2017. ANNUAL ESTIMATES OF PURSE SEINE CATCHES BY SPECIES BASED ON ALTERNATIVE DATA SOURCES. Working Paper ST-IP-3. Thirteenth Regular Session of the Scientific Committee of the WCPFC. Rarotonga, Cook Islands. 9–17 August 2017.
- Lawson, T.A. 2007. Further analysis of the proportion of bigeye in ‘yellowfin plus bigeye’ caught by purse seiners in the WCPFC Statistical Area. Information Paper ST-IP-5. Third Regular Session of the WCPFC Scientific Committee, 13–24 August 2006, Honolulu, Hawaii, United States of America. Oceanic Fisheries Programme, Secretariat of the Pacific Community, Noumea, New Caledonia.
- Lawson, T.A. 2010. Update on the estimation of selectivity bias based on paired spill and grab samples collected by observers on purse seiners in the Western and Central Pacific Ocean. Working Paper ST-WP-2. Sixth Regular Session of the Scientific Committee of the WCPFC. Nuku’alofa, Tonga. 10–19 August 2010.
- Lawson, T.A. 2012. Estimation of the species composition of the catch by purse seiners in the Western and Central Pacific Ocean using grab samples and spill samples collected by observers. Working Paper ST-WP-3. Eighth Regular Session of the Scientific Committee of the WCPFC. Busan, Republic of Korea. 7–15 August 2012.
- Lawson, T.A. 2013. Estimation of the species composition of the catch by purse seiners in the Western and Central Pacific Ocean – a response to recent independent reviews. Working Paper ST-WP-3. Ninth Regular Session of the Scientific Committee of the WCPFC. Pohnpei, FSM. 6–14 August 2013.
- Panizza, A., P.G. Williams, C. Falasi, E. Loganimoce. 2022. Status of ROP data management. Information Paper ST IP-02. Eighteenth Regular Session of the Scientific Committee of the WCPFC (SC18). Online Meeting. 10–18 August 2022.
- Peatman, T., P. Williams, S. Nicol. (2020). Project 60: Progress Report WCPFC-SC16-2020/ST-IP-04. Sixteenth Regular Session of the Scientific Committee of the WCPFC (SC16). Online Meeting 11–20 August 2020.
- WCPFC. 2021. WCPFC Tuna Fishery Yearbook, 2020. Western and Central Pacific Fisheries Commission, Pohnpei, Federated States of Micronesia. <https://www.wcpfc.int/statistical-bulletins>
- Williams, P., & T. Ruaia. 2022. Overview of tuna fisheries in the Western and Central Pacific Ocean, Including Economic Conditions – 2021. Working Paper GN-WP-1. Eighteenth Regular Session of the Scientific Committee of the WCPFC (SC18). Online Meeting. 10–18 August 2022.

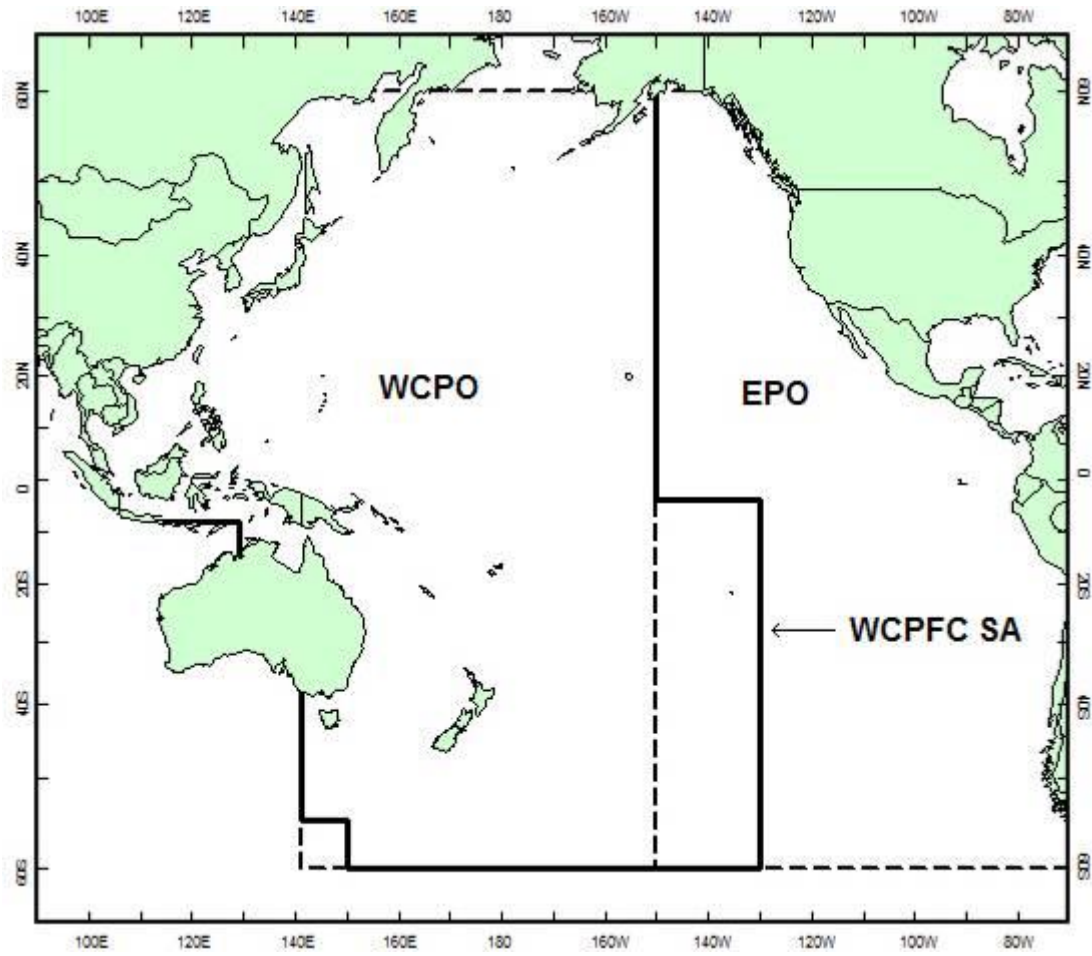


Figure 1. WCPFC Statistical Area (WCPFC SA), the Western and Central Pacific Ocean (WCPO) Area and the Eastern Pacific Ocean (EPO) Area

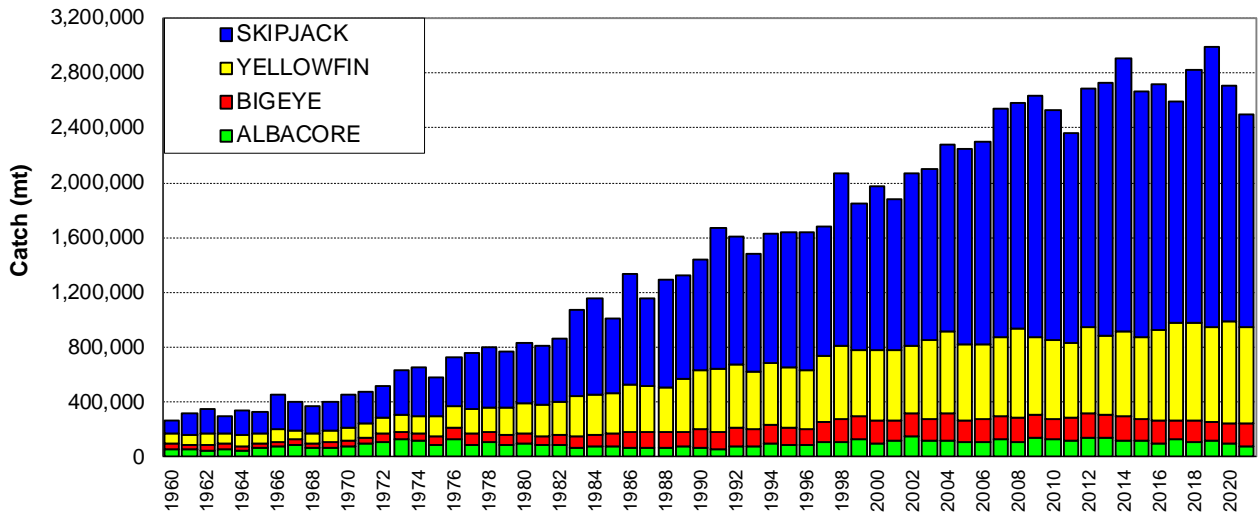


Figure 2. Catches of tuna in the WCPFC Statistical Area, by species

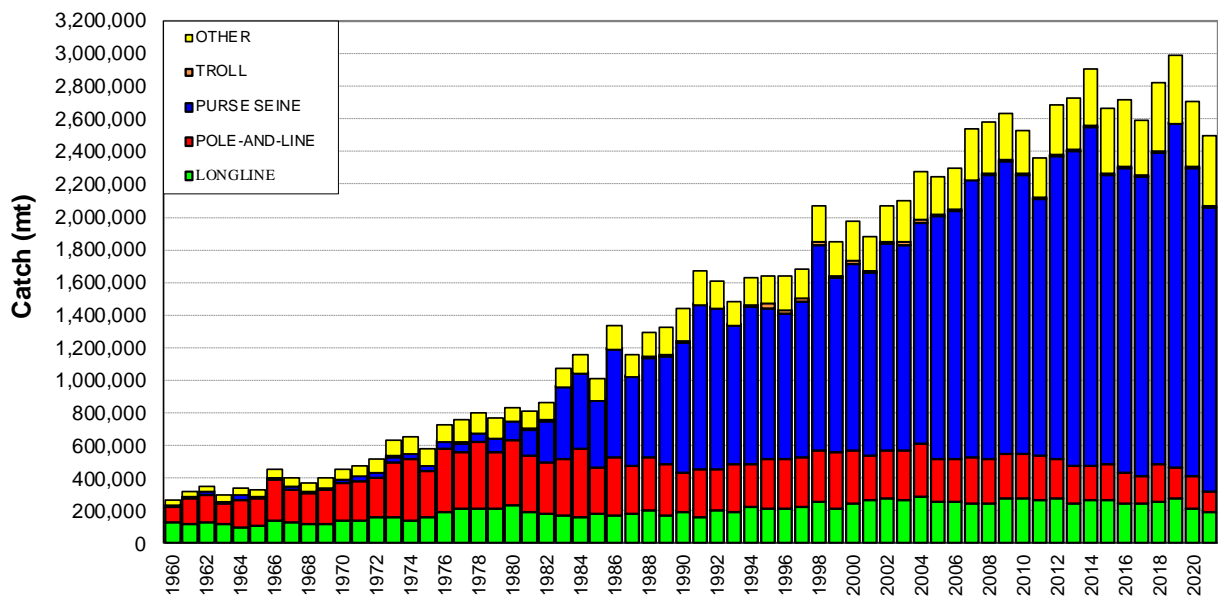


Figure 3. Catches of tuna in the WCPFC Statistical Area, by gear type

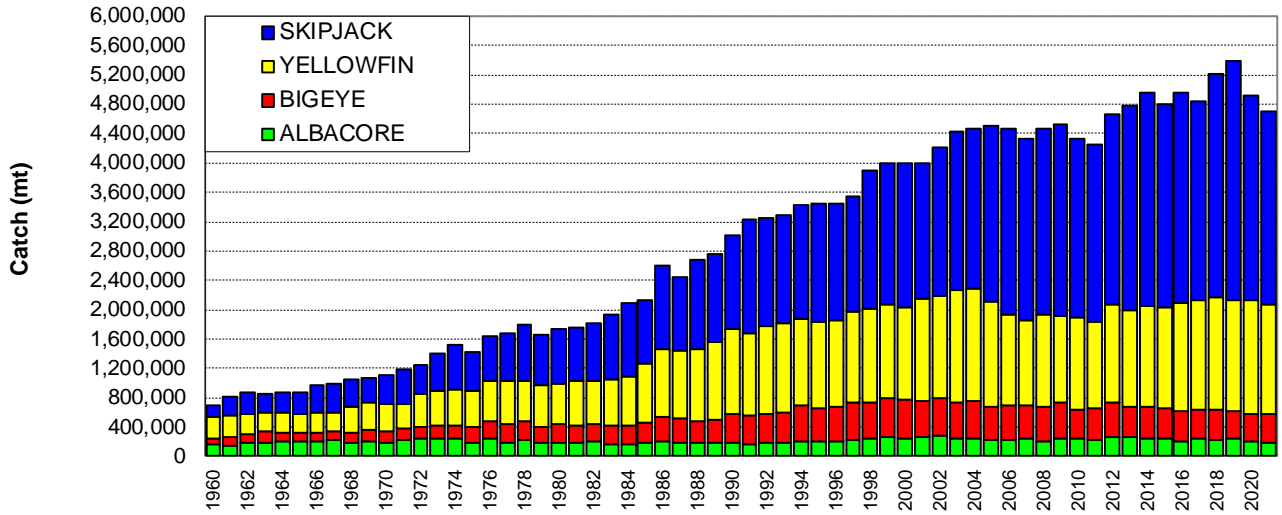


Figure 4. Global catches of tuna, by species

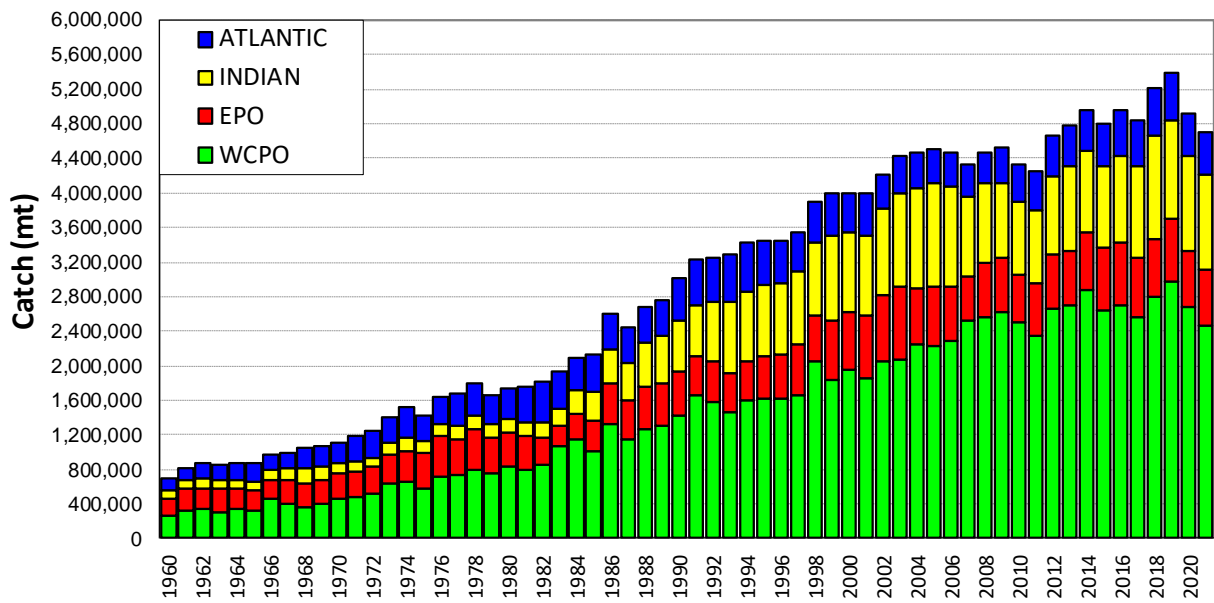


Figure 5. Global catches of tuna, by ocean area

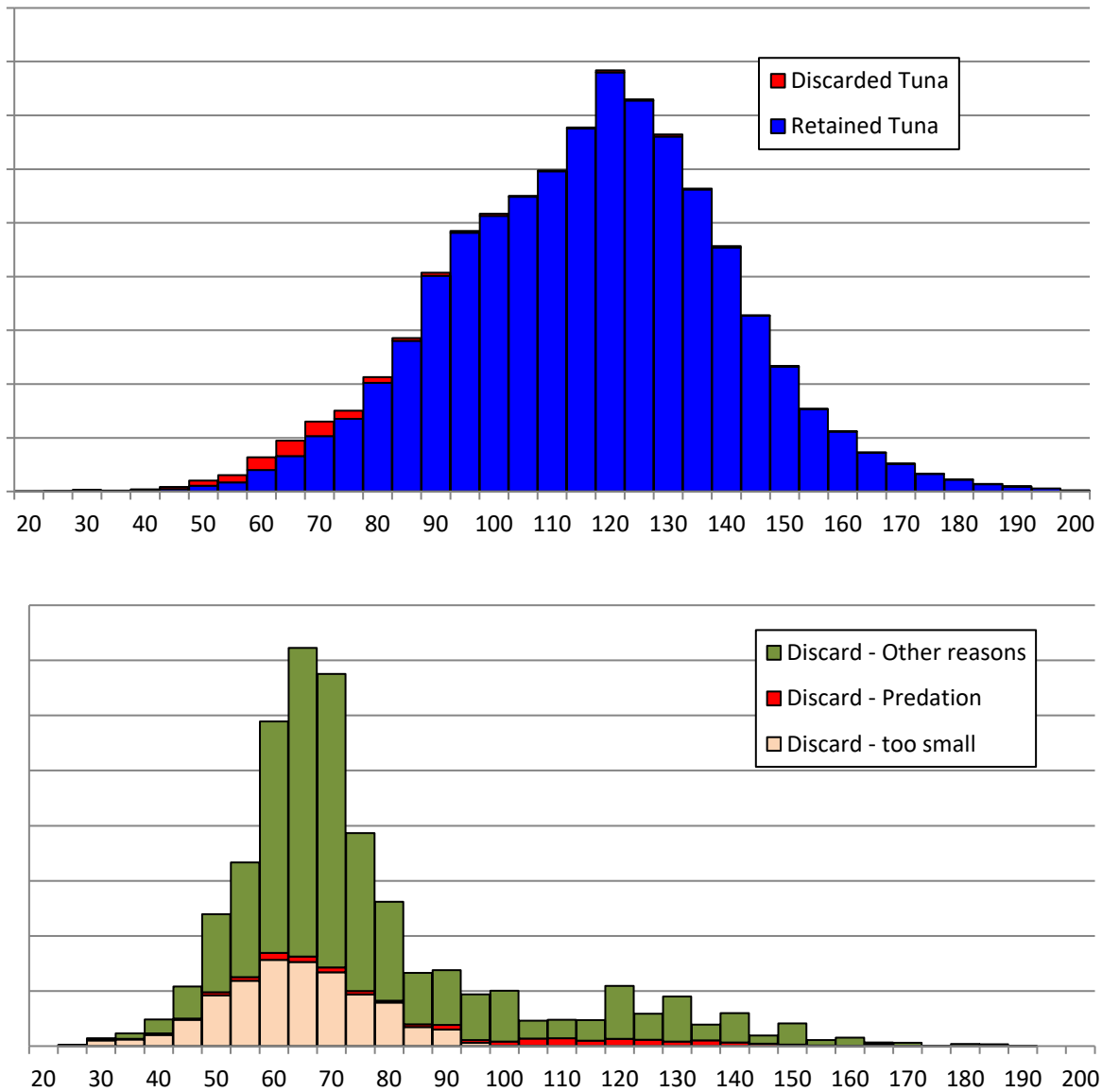


Figure 6. Longline bigeye tuna discard by size categories, 2015–2021.

Top–Retained and discarded bigeye tuna by size

Bottom–Discarded bigeye tuna by size and discard reason category

(Based on available unweighted, raw observer data)

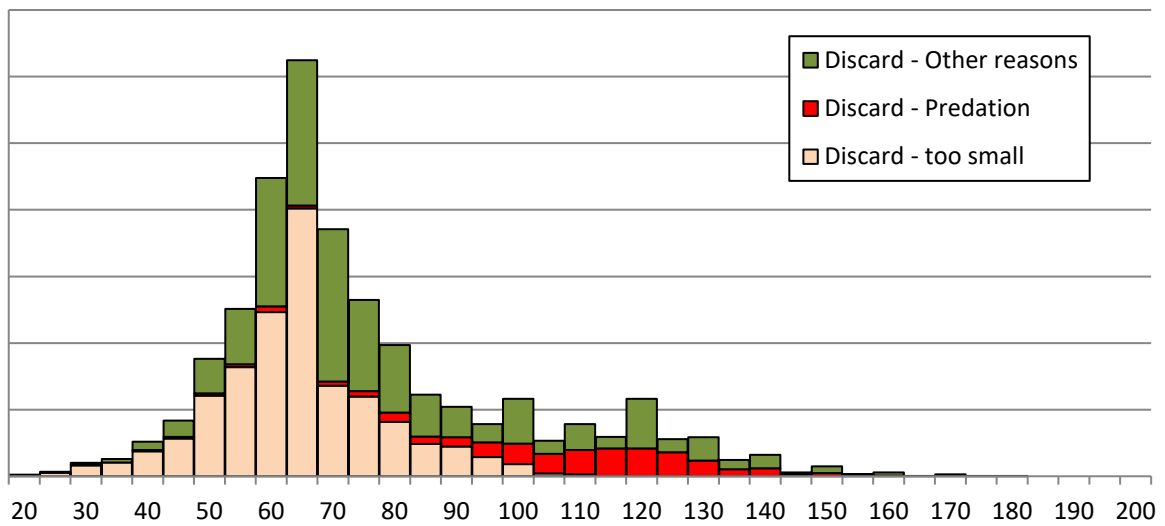
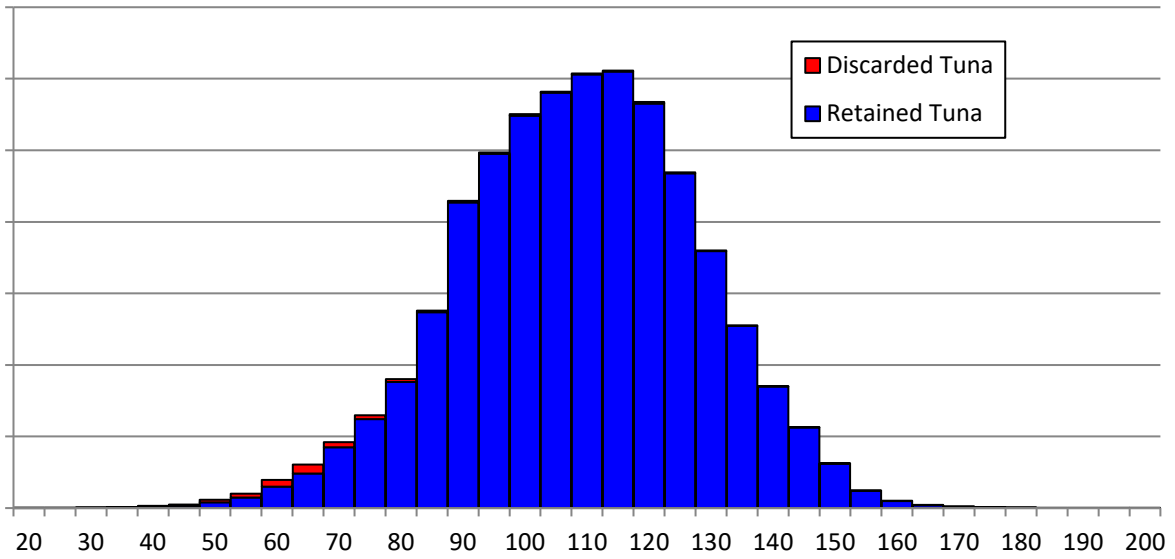


Figure 7. Longline yellowfin tuna discard by size categories, 2015–2021.

Top–Retained and discarded yellowfin tuna by size

Bottom–Discarded yellowfin tuna by size and discard reason category

(Based on available unweighted, raw observer data)

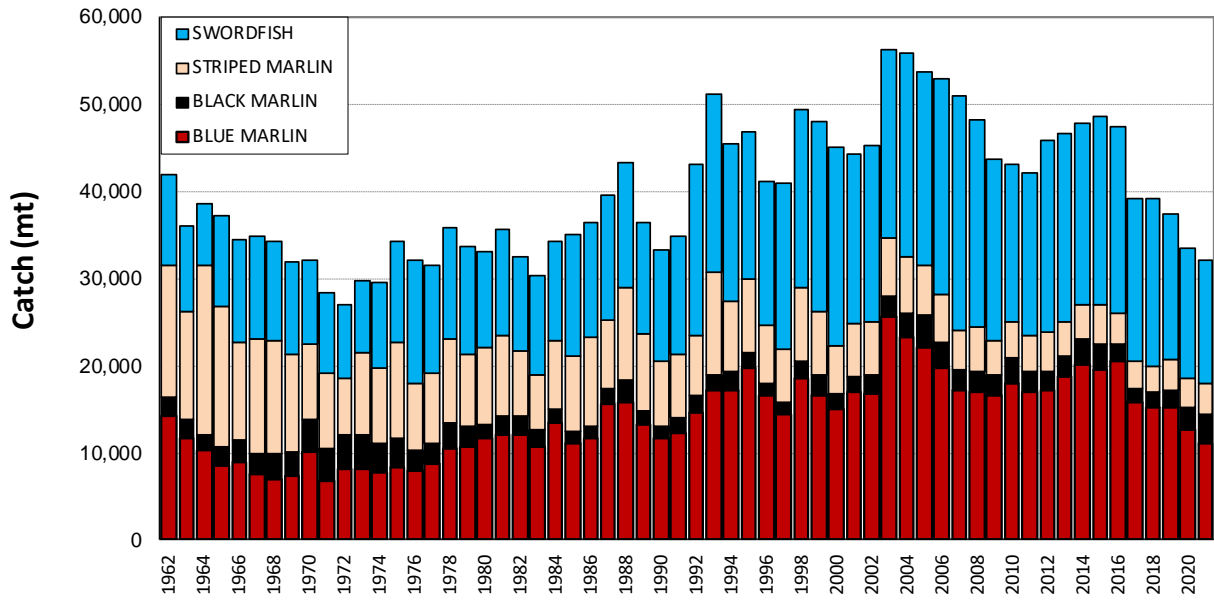


Figure 8. Commercial catches of major billfish species in the WCPFC Statistical Area

Table 1. Catches of target tunas in the WCPFC Statistical Area, by species

YEAR	ALBACORE		BIGEYE		SKIPJACK		YELLOWFIN		TOTAL
	TONNES	%	TONNES	%	TONNES	%	TONNES	%	
1960	56,619	21	45,025	17	89,938	34	73,667	28	265,249
1961	51,561	16	39,380	12	156,736	49	75,438	23	323,115
1962	46,331	13	36,868	11	181,624	52	83,944	24	348,767
1963	53,675	18	44,346	15	122,703	41	75,756	26	296,480
1964	50,545	15	32,391	10	182,918	54	74,154	22	340,008
1965	70,226	21	31,333	9	155,221	47	73,635	22	330,415
1966	75,114	17	33,187	7	249,514	55	93,099	21	450,914
1967	89,303	22	36,750	9	204,829	51	68,939	17	399,821
1968	64,213	17	30,427	8	194,990	52	81,944	22	371,574
1969	72,106	18	36,032	9	203,329	51	87,272	22	398,739
1970	74,350	16	41,702	9	242,366	53	98,989	22	457,407
1971	100,737	21	44,142	9	228,722	48	104,966	22	478,567
1972	109,655	21	57,163	11	238,082	46	115,885	22	520,785
1973	131,149	21	48,889	8	329,050	52	128,186	20	637,274
1974	115,162	18	52,758	8	356,557	54	131,237	20	655,714
1975	84,651	15	69,314	12	288,468	49	141,279	24	583,712
1976	132,947	18	83,110	11	356,862	49	153,098	21	726,017
1977	83,171	11	84,055	11	401,708	53	185,171	25	754,105
1978	111,161	14	66,964	8	448,039	56	178,188	22	804,352
1979	86,007	11	74,557	10	408,847	53	202,210	26	771,621
1980	95,156	11	73,355	9	448,633	54	220,192	26	837,336
1981	88,095	11	66,352	8	426,215	53	228,548	28	809,210
1982	89,496	10	76,730	9	459,614	53	236,225	27	862,065
1983	65,988	6	82,856	8	629,453	59	291,967	27	1,070,264
1984	74,540	6	89,648	8	703,988	61	292,830	25	1,161,006
1985	77,060	8	90,508	9	547,717	54	300,145	30	1,015,430
1986	71,757	5	110,363	8	809,112	60	348,215	26	1,339,447
1987	63,645	6	113,979	10	638,743	55	336,657	29	1,153,024
1988	67,948	5	110,236	9	789,843	61	325,604	25	1,293,631
1989	73,533	6	110,967	8	749,978	57	386,890	29	1,321,368
1990	63,872	4	134,376	9	809,942	56	434,013	30	1,442,203
1991	58,322	3	119,886	7	1,025,148	61	465,436	28	1,668,792
1992	74,452	5	143,145	9	928,151	58	459,820	29	1,605,568
1993	77,496	5	121,643	8	864,459	58	420,781	28	1,484,379
1994	96,461	6	135,473	8	939,534	58	454,526	28	1,625,994
1995	91,750	6	119,681	7	977,514	60	445,911	27	1,634,856
1996	91,140	6	115,273	7	1,003,276	61	429,338	26	1,639,027
1997	112,900	7	141,099	8	943,070	56	484,121	29	1,681,190
1998	112,465	5	161,641	8	1,248,763	60	542,243	26	2,065,112
1999	131,066	7	170,450	9	1,072,197	58	478,123	26	1,851,836
2000	101,672	5	160,442	8	1,197,535	61	513,488	26	1,973,137
2001	121,561	6	147,535	8	1,104,396	59	511,511	27	1,885,003
2002	148,051	7	169,452	8	1,257,444	61	496,976	24	2,071,923
2003	123,239	6	157,258	7	1,250,353	59	571,268	27	2,102,118
2004	122,399	5	195,052	9	1,357,372	60	600,555	26	2,275,378
2005	105,371	5	163,189	7	1,418,111	63	557,498	25	2,244,169
2006	105,257	5	171,437	7	1,481,979	64	545,818	24	2,304,491
2007	126,857	5	170,753	7	1,666,126	66	571,621	23	2,535,357
2008	105,109	4	178,927	7	1,648,181	64	647,791	25	2,580,008
2009	135,622	5	174,965	7	1,760,616	67	562,358	21	2,633,561
2010	129,224	5	148,566	6	1,680,246	66	570,267	23	2,528,303
2011	115,766	5	176,375	7	1,534,896	65	537,159	23	2,364,196
2012	143,792	5	177,631	7	1,733,705	65	627,877	23	2,683,005
2013	138,397	5	167,323	6	1,840,855	67	583,114	21	2,729,689
2014	121,720	4	176,901	6	1,985,679	68	621,662	21	2,905,962
2015	117,482	4	155,008	6	1,792,612	67	597,033	22	2,662,135
2016	101,245	4	162,635	6	1,790,256	66	666,412	24	2,720,548
2017	126,547	5	137,923	5	1,610,403	62	716,064	28	2,590,937
2018	110,949	4	158,716	6	1,843,724	65	705,203	25	2,818,592
2019	115,653	4	135,741	5	2,037,920	68	698,617	23	2,987,931
2020	94,064	3	154,801	6	1,719,662	64	735,394	27	2,703,921
2021	81,416	3	169,113	7	1,547,945	62	695,097	28	2,493,571

Table 2. Catches of target tunas in the WCPFC Statistical Area, by gear type

YEAR	LONGLINE		POLE-AND-LINE		PURSESEINE		TROLL		OTHER		TOTAL
	TONNES	%	TONNES	%	TONNES	%	TONNES	%	TONNES	%	
1960	129,874	49	98,956	37	5,224	2	0	0	31,195	12	265,249
1961	123,330	38	150,709	47	14,540	4	0	0	34,536	11	323,115
1962	128,804	37	166,141	48	18,875	5	0	0	34,947	10	348,767
1963	122,703	41	125,048	42	11,934	4	0	0	36,795	12	296,480
1964	102,481	30	167,181	49	29,012	9	0	0	41,334	12	340,008
1965	103,955	31	176,112	53	8,621	3	0	0	41,727	13	330,415
1966	145,278	32	241,730	54	16,913	4	0	0	46,993	10	450,914
1967	128,047	32	205,255	51	14,508	4	5	0	52,006	13	399,821
1968	120,136	32	183,954	50	15,143	4	14	0	52,327	14	371,574
1969	122,806	31	208,748	52	9,482	2	0	0	57,703	14	398,739
1970	141,360	31	230,142	50	16,222	4	50	0	69,633	15	457,407
1971	143,625	30	241,506	50	24,511	5	0	0	68,925	14	478,567
1972	161,533	31	242,745	47	29,030	6	268	0	87,209	17	520,785
1973	166,399	26	330,841	52	36,269	6	484	0	103,281	16	637,274
1974	145,192	22	370,499	57	29,547	5	898	0	109,578	17	655,714
1975	164,049	28	279,663	48	27,685	5	646	0	111,669	19	583,712
1976	198,013	27	382,627	53	40,770	6	25	0	104,582	14	726,017
1977	218,413	29	345,257	46	53,492	7	621	0	136,322	18	754,105
1978	212,059	26	407,482	51	52,041	6	1,686	0	131,084	16	804,352
1979	211,221	27	344,799	45	90,103	12	814	0	124,684	16	771,621
1980	230,625	28	398,498	48	116,755	14	1,489	0	89,969	11	837,336
1981	191,732	24	348,917	43	158,559	20	2,118	0	107,884	13	809,210
1982	179,575	21	316,457	37	255,491	30	2,552	0	107,990	13	862,065
1983	175,498	16	342,287	32	442,152	41	949	0	109,378	10	1,070,264
1984	162,111	14	415,016	36	462,277	40	3,124	0	118,478	10	1,161,006
1985	177,722	18	287,892	28	409,536	40	3,468	0	136,812	13	1,015,430
1986	169,129	13	360,864	27	660,297	49	2,284	0	146,873	11	1,339,447
1987	179,966	16	294,879	26	543,980	47	2,350	0	131,849	11	1,153,024
1988	200,774	16	327,997	25	608,996	47	4,671	0	151,193	12	1,293,631
1989	170,876	13	311,981	24	664,660	50	8,687	1	165,164	12	1,321,368
1990	188,842	13	247,104	17	795,530	55	7,219	1	203,508	14	1,442,203
1991	160,889	10	290,006	17	1,006,764	60	8,004	0	203,129	12	1,668,792
1992	199,688	12	259,762	16	975,738	61	6,844	0	163,536	10	1,605,568
1993	195,377	13	293,014	20	846,114	57	4,612	0	145,262	10	1,484,379
1994	221,367	14	262,721	16	971,563	60	7,493	0	162,850	10	1,625,994
1995	217,417	13	298,301	18	927,491	57	23,585	1	168,062	10	1,634,856
1996	215,466	13	301,279	18	896,443	55	17,807	1	208,032	13	1,639,027
1997	226,375	13	298,666	18	959,218	57	18,732	1	178,199	11	1,681,190
1998	251,197	12	323,645	16	1,257,392	61	19,099	1	213,779	10	2,065,112
1999	219,024	12	338,480	18	1,068,956	58	13,476	1	211,900	11	1,851,836
2000	248,474	13	319,854	16	1,143,294	58	25,845	1	235,670	12	1,973,137
2001	264,340	14	272,483	14	1,118,917	59	17,329	1	211,934	11	1,885,003
2002	281,627	14	286,202	14	1,265,452	61	16,129	1	222,513	11	2,071,923
2003	261,636	12	303,905	14	1,265,758	60	19,875	1	250,944	12	2,102,118
2004	284,849	13	322,179	14	1,354,239	60	23,445	1	290,666	13	2,275,378
2005	250,698	11	266,735	12	1,484,881	66	13,293	1	228,562	10	2,244,169
2006	255,653	11	257,594	11	1,525,500	66	10,098	0	255,646	11	2,304,491
2007	245,130	10	284,661	11	1,691,791	67	9,249	0	304,526	12	2,535,357
2008	247,755	10	269,551	10	1,738,057	67	11,740	0	312,905	12	2,580,008
2009	280,374	11	264,350	10	1,801,653	68	9,898	0	277,286	11	2,633,561
2010	278,578	11	270,123	11	1,708,272	68	11,320	0	260,010	10	2,528,303
2011	261,756	11	275,070	12	1,576,066	67	11,973	1	239,331	10	2,364,196
2012	275,053	10	242,960	9	1,851,983	69	14,018	1	298,991	11	2,683,005
2013	242,834	9	229,560	8	1,934,752	71	9,484	0	313,059	11	2,729,689
2014	264,683	9	206,939	7	2,079,879	72	6,677	0	347,784	12	2,905,962
2015	271,113	10	214,041	8	1,772,737	67	7,564	0	396,680	15	2,662,135
2016	240,729	9	198,398	7	1,862,822	68	7,207	0	411,392	15	2,720,548
2017	246,325	10	171,570	7	1,833,284	71	7,974	0	331,784	13	2,590,937
2018	257,247	9	232,255	8	1,908,954	68	7,464	0	412,672	15	2,818,592
2019	271,955	9	195,402	7	2,101,405	70	8,060	0	411,109	14	2,987,931
2020	214,207	8	200,345	7	1,880,328	70	10,000	0	399,041	15	2,703,921
2021	191,666	8	123,528	5	1,740,370	70	9,402	0	428,605	17	2,493,571

Table 3. LONGLINE catches in the WCPFC Statistical Area, by species

YEAR	ALBACORE		BIGEYE		SKIPJACK		YELLOWFIN		TOTAL
	TONNES	%	TONNES	%	TONNES	%	TONNES	%	
1960	31,387	24	43,467	33	0	0	55,020	42	129,874
1961	32,647	26	37,517	30	0	0	53,166	43	123,330
1962	37,358	29	35,895	28	4	0	55,547	43	128,804
1963	26,978	22	42,540	35	0	0	53,185	43	122,703
1964	26,240	26	30,989	30	5	0	45,247	44	102,481
1965	28,603	28	29,848	29	11	0	45,493	44	103,955
1966	51,588	36	31,984	22	52	0	61,654	42	145,278
1967	58,208	45	33,632	26	124	0	36,083	28	128,047
1968	46,226	38	27,757	23	83	0	46,070	38	120,136
1969	38,478	31	32,571	27	130	0	51,627	42	122,806
1970	48,981	35	34,965	25	1,608	1	55,806	39	141,360
1971	46,025	32	38,359	27	1,475	1	57,766	40	143,625
1972	47,774	30	51,040	32	1,544	1	61,175	38	161,533
1973	59,835	36	42,412	25	1,861	1	62,291	37	166,399
1974	39,299	27	45,653	31	2,124	1	58,116	40	145,192
1975	31,180	19	61,488	37	1,919	1	69,462	42	164,049
1976	45,022	23	73,325	37	2,096	1	77,570	39	198,013
1977	48,789	22	72,083	33	3,127	1	94,414	43	218,413
1978	42,260	20	56,364	27	3,233	2	110,202	52	212,059
1979	36,295	17	63,837	30	2,179	1	108,910	52	211,221
1980	42,343	18	62,537	27	632	0	125,113	54	230,625
1981	47,272	25	46,590	24	756	0	97,114	51	191,732
1982	43,876	24	48,578	27	972	1	86,149	48	179,575
1983	36,784	21	46,311	26	2,144	1	90,259	51	175,498
1984	31,277	19	52,976	33	870	1	76,988	47	162,111
1985	38,012	21	58,629	33	1,108	1	79,973	45	177,722
1986	41,702	25	56,989	34	1,439	1	68,999	41	169,129
1987	33,398	19	68,832	38	2,329	1	75,407	42	179,966
1988	41,694	21	68,288	34	1,937	1	88,855	44	200,774
1989	30,147	18	64,916	38	2,507	1	73,306	43	170,876
1990	32,170	17	77,009	41	363	0	79,300	42	188,842
1991	35,459	22	61,033	38	885	1	63,512	39	160,889
1992	45,551	23	75,966	38	432	0	77,739	39	199,688
1993	56,183	29	66,566	34	573	0	72,055	37	195,377
1994	59,629	27	79,175	36	379	0	82,184	37	221,367
1995	60,388	28	68,125	31	598	0	88,306	41	217,417
1996	61,590	29	58,054	27	3,935	2	91,887	43	215,466
1997	72,643	32	68,597	30	4,070	2	81,065	36	226,375
1998	80,042	32	85,048	34	5,030	2	81,077	32	251,197
1999	68,834	31	74,959	34	4,208	2	71,023	32	219,024
2000	70,083	28	76,924	31	4,559	2	96,908	39	248,474
2001	85,022	32	78,690	30	5,059	2	95,569	36	264,340
2002	90,152	32	92,381	33	3,450	1	95,644	34	281,627
2003	79,084	30	83,016	32	3,824	1	95,712	37	261,636
2004	77,023	27	99,709	35	4,051	1	104,066	37	284,849
2005	83,305	33	78,892	31	1,084	0	87,417	35	250,698
2006	85,517	33	83,592	33	1,528	1	85,016	33	255,653
2007	80,326	33	81,113	33	1,175	0	82,516	34	245,130
2008	79,324	32	83,428	34	803	0	84,200	34	247,755
2009	99,274	35	80,507	29	1,220	0	99,373	35	280,374
2010	106,142	38	72,721	26	1,192	0	98,523	35	278,578
2011	85,287	33	77,567	30	1,124	0	97,778	37	261,756
2012	101,412	37	83,971	31	2,004	1	87,666	32	275,053
2013	98,597	41	65,637	27	1,254	1	77,346	32	242,834
2014	86,995	33	75,434	28	1,879	1	100,375	38	264,683
2015	91,462	34	73,397	27	1,879	1	104,375	38	271,113
2016	80,140	33	63,077	26	5,642	2	91,870	38	240,729
2017	99,401	40	58,126	24	2,571	1	86,227	35	246,325
2018	86,447	34	68,911	27	4,162	2	97,727	38	257,247
2019	90,658	33	69,425	26	5,593	2	106,279	39	271,955
2020	78,311	37	58,559	27	2,312	1	75,025	35	214,207
2021	66,475	35	49,511	26	3,833	2	71,847	37	191,666

Table 4. POLE-AND-LINE catches in the WCPFC Statistical Area, by species

YEAR	ALBACORE		BIGEYE		SKIPJACK		YELLOWFIN		TOTAL
	TONNES	%	TONNES	%	TONNES	%	TONNES	%	
1960	25,156	25	1,500	2	70,428	71	1,872	2	98,956
1961	18,639	12	1,800	1	127,011	84	3,259	2	150,709
1962	8,729	5	800	0	152,387	92	4,225	3	166,141
1963	26,420	21	1,800	1	94,757	76	2,071	2	125,048
1964	23,858	14	1,143	1	137,106	82	5,074	3	167,181
1965	41,491	24	1,254	1	129,933	74	3,434	2	176,112
1966	22,830	9	1,108	0	215,600	89	2,192	1	241,730
1967	30,481	15	2,803	1	168,846	82	3,125	2	205,255
1968	16,597	9	2,272	1	162,379	88	2,706	1	183,954
1969	32,148	15	3,350	2	168,084	81	5,166	2	208,748
1970	24,485	11	3,178	1	197,873	86	4,606	2	230,142
1971	53,451	22	1,862	1	180,945	75	5,248	2	241,506
1972	60,691	25	1,762	1	172,827	71	7,465	3	242,745
1973	68,908	21	1,258	0	253,217	77	7,458	2	330,841
1974	73,676	20	1,039	0	289,202	78	6,582	2	370,499
1975	52,257	19	1,334	0	218,271	78	7,801	3	279,663
1976	85,436	22	3,423	1	276,582	72	17,186	4	382,627
1977	32,034	9	3,325	1	294,641	85	15,257	4	345,257
1978	59,977	15	3,337	1	331,401	81	12,767	3	407,482
1979	44,762	13	2,540	1	285,859	83	11,638	3	344,799
1980	46,843	12	2,916	1	333,597	84	15,142	4	398,498
1981	27,426	8	3,382	1	296,065	85	22,044	6	348,917
1982	29,615	9	4,993	2	264,726	84	17,123	5	316,457
1983	21,098	6	5,077	1	298,928	87	17,184	5	342,287
1984	26,015	6	4,557	1	366,811	88	17,633	4	415,016
1985	20,714	7	5,529	2	238,932	83	22,717	8	287,892
1986	16,096	4	4,133	1	322,665	89	17,970	5	360,864
1987	19,091	6	4,602	2	252,142	86	19,044	6	294,879
1988	6,216	2	5,890	2	295,325	90	20,566	6	327,997
1989	8,629	3	6,131	2	275,088	88	22,133	7	311,981
1990	8,777	4	5,985	2	211,573	86	20,769	8	247,104
1991	7,117	2	3,929	1	259,778	90	19,182	7	290,006
1992	13,899	5	4,055	2	218,765	84	23,043	9	259,762
1993	12,871	4	4,505	2	255,152	87	20,486	7	293,014
1994	26,456	10	5,251	2	209,636	80	21,378	8	262,721
1995	21,120	7	6,228	2	247,744	83	23,209	8	298,301
1996	20,302	7	7,940	3	242,486	80	30,551	10	301,279
1997	32,259	11	6,563	2	236,999	79	22,845	8	298,666
1998	22,962	7	6,405	2	266,772	82	27,506	8	323,645
1999	50,507	15	5,856	2	255,330	75	26,787	8	338,480
2000	21,652	7	6,838	2	264,407	83	26,957	8	319,854
2001	29,467	11	5,905	2	212,668	78	24,443	9	272,483
2002	48,472	17	6,109	2	207,488	72	24,133	8	286,202
2003	36,126	12	5,296	2	238,179	78	24,304	8	303,905
2004	32,365	10	9,238	3	249,936	78	30,640	10	322,179
2005	16,162	6	6,851	3	216,715	81	27,007	10	266,735
2006	15,429	6	9,781	4	208,731	81	23,653	9	257,594
2007	37,785	13	7,296	3	213,010	75	26,570	9	284,661
2008	19,072	7	9,204	3	218,570	81	22,705	8	269,551
2009	31,193	12	7,916	3	201,323	76	23,918	9	264,350
2010	19,575	7	7,027	3	223,409	83	20,112	7	270,123
2011	25,734	9	5,655	2	206,843	75	36,838	13	275,070
2012	33,783	14	3,934	2	170,538	70	34,705	14	242,960
2013	33,602	15	5,009	2	169,025	74	21,924	10	229,560
2014	29,459	14	4,714	2	148,684	72	24,082	12	206,939
2015	21,318	10	5,687	3	151,317	71	35,719	17	214,041
2016	14,475	7	3,933	2	156,603	79	23,387	12	198,398
2017	20,905	12	2,264	1	123,466	72	24,935	15	171,570
2018	17,930	8	4,165	2	183,935	79	26,225	11	232,255
2019	17,957	9	1,514	1	158,225	81	17,706	9	195,402
2020	8,560	4	1,773	1	159,407	80	30,605	15	200,345
2021	8,546	7	1,682	1	97,908	79	15,392	12	123,528

Table 5. PURSE SEINE catch estimates in the WCPFC Statistical Area, by species.
(original catches have been adjusted with species compositions determined from observer grab samples corrected for size selectivity bias)

YEAR	ALBACORE		BIGEYE		SKIPJACK		YELLOWFIN		TOTAL
	TONNES	%	TONNES	%	TONNES	%	TONNES	%	
1960	0	0	58	1	3,728	71	1,438	28	5,224
1961	7	0	63	0	11,693	80	2,777	19	14,540
1962	53	0	173	1	11,674	62	6,975	37	18,875
1963	59	0	6	0	9,592	80	2,277	19	11,934
1964	128	0	231	1	25,006	86	3,647	13	29,012
1965	11	0	201	2	4,657	54	3,752	44	8,621
1966	111	1	9	0	10,949	65	5,844	35	16,913
1967	89	1	62	0	10,929	75	3,428	24	14,508
1968	267	2	194	1	7,599	50	7,083	47	15,143
1969	521	5	49	1	5,045	53	3,867	41	9,482
1970	317	2	591	4	7,670	47	7,644	47	16,222
1971	902	4	678	3	13,873	57	9,058	37	24,511
1972	277	1	671	2	18,343	63	9,739	34	29,030
1973	1,353	4	770	2	19,537	54	14,609	40	36,269
1974	161	1	1,079	4	11,209	38	17,098	58	29,547
1975	159	1	1,280	5	13,259	48	12,987	47	27,685
1976	1,109	3	2,008	5	22,077	54	15,576	38	40,770
1977	669	1	2,693	5	32,700	61	17,430	33	53,492
1978	1,115	2	2,932	6	32,176	62	15,818	30	52,041
1979	125	0	3,214	4	54,667	61	32,097	36	90,103
1980	329	0	3,816	3	76,108	65	36,502	31	116,755
1981	252	0	11,756	7	85,153	54	61,398	39	158,559
1982	561	0	19,017	7	145,814	57	90,099	35	255,491
1983	350	0	26,764	6	278,721	63	136,317	31	442,152
1984	3,380	1	27,068	6	287,899	62	143,930	31	462,277
1985	1,533	0	20,175	5	253,771	62	134,057	33	409,536
1986	1,542	0	42,895	6	420,043	64	195,817	30	660,297
1987	1,205	0	34,993	6	325,570	60	182,212	33	543,980
1988	1,208	0	29,255	5	434,004	71	144,529	24	608,996
1989	2,521	0	32,473	5	413,702	62	215,964	32	664,660
1990	1,995	0	43,260	5	503,247	63	247,028	31	795,530
1991	2,652	0	45,577	5	672,760	67	285,775	28	1,006,764
1992	4,104	0	56,923	6	617,897	63	296,814	30	975,738
1993	2,889	0	44,902	5	530,677	63	267,646	32	846,114
1994	2,026	0	43,224	4	652,327	67	273,986	28	971,563
1995	1,177	0	36,918	4	638,531	69	250,865	27	927,491
1996	581	0	38,923	4	651,106	73	205,833	23	896,443
1997	1,068	0	58,009	6	606,523	63	293,618	31	959,218
1998	1,554	0	60,638	5	866,959	69	328,241	26	1,257,392
1999	6,872	1	80,572	8	706,421	66	275,091	26	1,068,956
2000	2,408	0	66,280	6	797,991	70	276,615	24	1,143,294
2001	974	0	53,500	5	774,718	69	289,725	26	1,118,917
2002	3,303	0	60,976	5	932,334	74	268,839	21	1,265,452
2003	627	0	57,564	5	882,074	70	325,493	26	1,265,758
2004	7,200	1	73,313	5	950,066	70	323,660	24	1,354,239
2005	850	0	71,703	5	1,054,924	71	357,404	24	1,484,881
2006	364	0	71,643	5	1,110,083	73	343,410	23	1,525,500
2007	5,682	0	75,242	4	1,257,726	74	353,141	21	1,691,791
2008	825	0	79,869	5	1,226,046	71	431,317	25	1,738,057
2009	2,077	0	81,151	5	1,383,759	77	334,666	19	1,801,653
2010	330	0	64,494	4	1,292,137	76	351,311	21	1,708,272
2011	480	0	87,302	6	1,173,072	74	315,212	20	1,576,066
2012	4,193	0	76,634	4	1,372,974	74	398,182	22	1,851,983
2013	1,988	0	84,404	4	1,475,711	76	372,649	19	1,934,752
2014	2,009	0	81,430	4	1,616,536	78	379,904	18	2,079,879
2015	1,072	0	60,970	3	1,393,137	79	317,558	18	1,772,737
2016	3,689	0	74,056	4	1,376,372	74	408,705	22	1,862,822
2017	2,656	0	66,261	4	1,263,258	69	501,109	27	1,833,284
2018	3,024	0	74,294	4	1,449,431	76	382,205	20	1,908,954
2019	3,102	0	49,958	2	1,696,173	81	352,172	17	2,101,405
2020	1,426	0	73,040	4	1,404,235	75	401,627	21	1,880,328
2021	1,266	0	79,167	5	1,254,022	72	405,915	23	1,740,370

Table 6. Catches of target tunas in the WCPFC Statistical Area, by flag

YEAR	AUSTRALIA	BELIZE	CANADA	CHINA	COOK ISLANDS	ECUADOR	EL SALVADOR	FEDERATED STATES OF MICRONESIA
1960	-	-	-	-	-	-	-	-
1961	-	-	-	-	-	-	-	-
1962	-	-	-	-	-	-	-	-
1963	-	-	-	-	-	-	-	-
1964	-	-	-	-	-	-	-	-
1965	-	-	-	-	-	-	-	-
1966	-	-	-	-	-	-	-	-
1967	-	-	-	-	-	-	-	-
1968	-	-	-	-	-	-	-	-
1969	-	-	-	-	-	-	-	-
1970	100	-	-	-	-	-	-	-
1971	100	-	-	-	-	-	-	-
1972	100	-	-	-	-	-	-	-
1973	100	-	-	-	-	-	-	-
1974	100	-	-	-	-	-	-	-
1975	2,000	-	-	-	-	-	-	-
1976	147	-	-	-	-	-	-	-
1977	131	-	-	-	-	-	-	-
1978	375	-	-	-	-	-	-	-
1979	100	-	-	-	-	-	-	-
1980	117	-	-	-	-	-	-	-
1981	357	-	-	-	-	-	-	-
1982	238	-	-	-	-	-	-	-
1983	230	-	-	-	-	-	-	-
1984	147	-	-	-	-	-	-	-
1985	18	-	-	-	-	-	-	-
1986	101	-	-	-	-	-	-	-
1987	1,455	-	-	-	-	-	-	-
1988	1,753	-	235	44	-	-	-	-
1989	2,836	-	235	144	-	-	-	-
1990	6,983	-	235	453	-	-	-	-
1991	9,380	-	235	1,007	-	-	-	11,339
1992	9,524	-	235	2,715	-	-	-	15,472
1993	7,211	-	235	6,419	-	-	-	16,908
1994	5,415	-	235	12,677	32	-	-	20,941
1995	6,288	54	235	10,586	63	-	-	6,758
1996	5,249	129	136	6,026	59	-	-	7,394
1997	7,550	77	149	3,664	-	-	-	8,255
1998	5,153	276	167	3,272	22	-	-	14,178
1999	7,551	211	253	7,515	56	-	-	10,881
2000	6,997	270	351	6,244	335	3,992	-	21,688
2001	5,279	7,143	206	9,948	206	1,057	599	17,646
2002	5,232	3,385	144	15,632	770	427	1,488	20,607
2003	5,809	2,697	-	42,210	2,462	1,562	73	30,829
2004	4,200	943	63	42,606	3,207	3,051	-	28,471
2005	3,093	1,056	72	62,734	3,125	5,193	-	28,301
2006	5,030	632	135	77,382	2,841	9,523	-	10,774
2007	4,404	595	27	73,698	3,266	9,187	6,026	15,440
2008	3,969	225	-	86,451	2,817	25,414	10,962	19,425
2009	3,646	190	-	119,639	2,054	8,495	8,824	26,446
2010	2,566	127	-	83,240	3,058	11,320	7,370	26,405
2011	2,924	220	1	105,276	3,636	29,184	12,226	28,785
2012	2,538	194	-	91,301	5,382	23,145	13,647	38,983
2013	2,613	252	-	121,299	1,948	21,442	13,272	30,755
2014	2,936	-	-	105,686	2,032	21,769	17,479	42,710
2015	3,916	-	-	72,794	1,764	11,377	15,301	61,207
2016	3,478	-	-	43,238	1,910	3,925	7,303	77,420
2017	2,928	-	55	60,276	3,638	13,571	4,318	89,848
2018	2,395	-	-	53,844	3,985	22,445	4,016	126,698
2019	3,014	-	-	41,333	5,312	25,135	2,939	170,072
2020	3,207	-	-	38,174	2,254	14,159	3,636	182,609
2021	2,889	-	31	31,239	5,120	16,231	5,043	154,636

Table 6 continued

YEAR	FIJI ISLANDS	FRENCH POLYNESIA	INDONESIA	JAPAN	KIRIBATI	REPUBLIC OF KOREA	MARSHALL ISLANDS	MEXICO
1960	—	—	7,415	231,762	—	744	—	—
1961	—	—	8,054	287,830	—	385	—	—
1962	—	—	8,749	310,905	—	708	—	—
1963	—	—	9,505	255,137	—	1,955	—	—
1964	—	—	10,327	294,364	—	2,527	—	—
1965	—	—	11,223	274,335	—	7,078	—	—
1966	—	—	12,198	378,668	—	13,405	—	—
1967	—	—	13,260	312,049	—	14,469	—	—
1968	—	—	14,417	273,603	—	10,794	—	—
1969	—	—	15,677	296,813	—	17,077	—	—
1970	—	—	17,600	325,840	—	16,927	—	—
1971	—	—	18,100	319,721	—	16,541	—	—
1972	—	—	28,600	341,854	—	17,678	—	—
1973	—	—	32,500	418,048	—	25,938	—	—
1974	12	—	33,779	429,014	—	14,105	—	—
1975	11	—	34,378	358,037	—	29,343	—	—
1976	742	—	33,375	474,987	—	44,464	—	—
1977	1,711	—	37,235	459,318	—	43,722	—	—
1978	2,524	—	40,024	513,392	—	33,102	—	—
1979	3,494	696	50,973	466,434	—	41,915	—	—
1980	2,496	936	58,281	522,843	1,812	46,096	—	—
1981	5,836	1,001	66,579	460,646	2,376	33,311	—	—
1982	4,428	1,034	72,360	501,943	2,269	39,684	—	—
1983	3,741	836	81,685	554,560	3,406	37,589	—	468
1984	4,572	1,250	91,802	639,034	3,843	33,294	—	6,601
1985	3,946	836	99,918	511,606	2,531	44,292	—	—
1986	3,125	961	104,027	776,343	3,226	63,034	—	—
1987	3,889	878	131,376	504,820	2,246	91,201	—	—
1988	3,891	715	152,704	599,082	3,284	113,653	—	—
1989	5,189	856	165,050	517,619	4,094	139,905	—	—
1990	3,830	2,109	174,573	471,098	2,407	204,399	—	—
1991	5,298	2,335	178,542	490,677	2,036	247,950	—	—
1992	4,790	2,019	205,267	472,794	2,363	213,552	9	—
1993	4,966	2,387	188,046	516,859	2,104	150,165	137	—
1994	5,937	2,804	208,581	473,787	3,132	226,531	48	—
1995	7,009	3,343	222,269	481,106	5,423	206,176	22	—
1996	6,803	3,583	344,955	417,585	6,645	174,948	—	—
1997	4,354	4,564	256,670	507,798	7,021	188,668	—	—
1998	4,013	5,710	338,881	543,367	9,390	247,929	—	—
1999	4,075	5,200	321,618	482,046	9,793	173,489	—	—
2000	9,660	6,833	342,203	498,958	14,726	207,498	7,560	—
2001	11,309	7,733	314,888	439,330	5,400	216,692	35,774	—
2002	11,551	7,347	302,659	451,896	9,829	254,594	38,952	—
2003	10,854	6,309	308,731	469,809	6,898	221,079	37,875	—
2004	17,312	5,496	406,483	441,599	6,661	212,655	46,676	—
2005	15,477	5,089	247,514	481,851	9,164	237,353	56,165	—
2006	15,472	5,938	285,844	445,977	6,723	274,859	42,349	—
2007	10,042	6,408	321,890	472,401	18,019	279,585	59,410	—
2008	13,627	5,673	334,585	434,689	19,409	275,133	33,014	—
2009	16,828	6,878	388,635	400,816	34,004	310,139	43,974	—
2010	12,545	6,250	358,254	431,352	38,946	300,213	57,225	—
2011	16,307	6,028	397,442	369,726	59,611	231,570	90,544	—
2012	14,978	7,273	443,316	397,608	74,108	290,293	74,060	—
2013	12,782	6,695	526,236	378,875	77,782	245,372	77,769	—
2014	13,663	7,175	482,917	355,845	114,156	292,011	75,896	—
2015	13,085	7,403	432,078	334,108	142,623	289,434	86,870	—
2016	14,256	6,666	525,633	304,670	171,089	299,173	62,211	—
2017	17,145	6,350	470,566	303,406	159,386	265,539	67,010	—
2018	13,692	7,073	526,695	323,716	194,789	289,323	75,307	—
2019	14,421	7,373	536,222	315,753	235,570	344,669	98,337	—
2020	12,438	6,315	514,687	257,520	209,503	277,267	85,214	—
2021	9,885	7,604	465,071	234,016	188,073	255,221	92,643	—

Table 6 continued

YEAR	NAURU	NEW CALEDONIA	NEW ZEALAND	NIUE	PALAU	PAPUA NEW GUINEA	PHILIPPINES	EU-PORTUGAL
1960	–	–	–	–	–	–	20,585	–
1961	–	–	–	–	–	–	21,735	–
1962	–	–	–	–	–	–	22,957	–
1963	–	–	–	–	–	–	24,252	–
1964	–	–	–	–	1,166	–	25,626	–
1965	–	–	–	–	2,670	–	27,084	–
1966	–	–	–	–	2,686	–	28,632	–
1967	–	–	5	–	3,406	–	30,275	–
1968	–	–	14	–	5,056	–	32,021	–
1969	–	–	–	–	4,762	–	33,875	–
1970	–	–	50	–	8,082	2,428	52,000	–
1971	–	–	–	–	2,143	16,974	57,200	–
1972	–	–	268	–	1,519	13,130	60,700	–
1973	–	–	484	–	2,350	28,216	70,900	–
1974	–	–	899	–	6,808	41,630	81,187	–
1975	–	–	647	–	6,269	17,369	84,450	–
1976	–	–	25	–	5,323	32,921	73,653	–
1977	–	–	621	–	4,012	24,115	118,149	–
1978	–	–	1,701	–	9,694	48,859	87,319	–
1979	–	–	830	–	5,688	26,857	94,309	–
1980	–	–	1,519	–	6,576	33,994	77,505	–
1981	–	229	2,111	–	9,411	31,412	94,616	–
1982	–	868	2,436	–	4,053	–	104,047	–
1983	–	461	6,564	–	–	–	118,529	–
1984	–	150	7,005	–	–	2,744	105,217	–
1985	–	281	5,713	–	97	9,300	137,308	–
1986	–	367	6,793	–	131	–	145,098	–
1987	–	1,102	5,035	–	161	–	141,461	–
1988	–	1,092	3,923	–	157	–	124,785	–
1989	–	871	10,323	–	77	–	151,125	–
1990	–	1,730	7,120	–	88	–	202,215	–
1991	–	1,536	7,765	–	–	–	221,816	–
1992	–	1,092	4,524	–	213	–	165,653	–
1993	–	1,294	4,415	–	206	8	134,922	–
1994	–	1,355	8,513	–	184	1,381	172,556	–
1995	–	1,274	8,147	–	100	12,701	198,613	–
1996	–	1,201	10,194	–	100	10,572	205,003	–
1997	–	977	10,451	–	107	19,400	208,767	–
1998	–	1,543	15,154	–	100	50,727	235,585	–
1999	–	1,616	10,141	–	100	38,980	226,318	–
2000	11	1,662	18,918	–	240	68,818	234,519	–
2001	13	1,718	17,533	–	62	92,806	210,785	–
2002	7	1,926	38,573	–	4	124,705	234,060	–
2003	20	2,007	30,614	–	20	167,153	291,833	–
2004	3	2,189	33,886	6	35	225,440	302,112	–
2005	–	2,114	27,917	105	–	240,990	306,838	–
2006	–	1,807	30,823	286	–	242,312	334,610	–
2007	–	1,770	38,969	306	–	265,200	381,050	–
2008	3	1,993	33,878	435	–	233,350	420,526	–
2009	8	2,187	30,618	189	–	215,964	328,048	–
2010	4	2,488	26,950	110	–	208,253	285,593	–
2011	11	2,362	25,313	–	–	178,992	193,915	7
2012	11	2,337	23,527	–	–	240,055	233,387	18
2013	19	2,314	27,688	–	–	221,889	229,394	175
2014	19	2,429	22,907	–	–	236,824	287,189	94
2015	19	2,504	21,332	–	–	215,765	247,960	21
2016	19	2,361	13,701	–	–	302,693	214,803	16
2017	19	2,382	10,314	–	2,507	308,490	200,066	–
2018	8,898	2,280	9,500	–	2,942	313,871	154,921	–
2019	33,257	2,750	12,002	–	2,509	267,348	160,083	–
2020	92,109	2,468	9,758	–	1	198,473	215,330	–
2021	120,113	2,469	8,507	3	–	169,340	177,078	–

Table 6 continued

YEAR	RUSSIA	SAMOA	SENEGAL	SOLOMON ISLANDS	EU-SPAIN	CHINESE TAIPEI	TONGA
1960	-	-	-	-	-	4,035	-
1961	-	-	-	-	-	4,485	-
1962	-	-	-	-	-	4,779	-
1963	-	-	-	-	-	5,082	-
1964	-	-	-	-	-	5,482	-
1965	-	-	-	-	-	7,524	-
1966	-	-	-	-	-	14,812	-
1967	-	-	-	-	-	25,911	-
1968	-	-	-	-	-	35,302	-
1969	-	-	-	-	-	30,096	-
1970	-	-	-	-	-	33,887	-
1971	-	-	-	4,711	-	42,640	-
1972	-	-	-	7,905	-	48,612	-
1973	-	-	-	6,624	-	51,807	-
1974	-	-	-	10,332	-	37,501	-
1975	-	-	-	7,094	-	43,804	-
1976	-	-	-	15,763	-	43,546	-
1977	-	-	-	12,202	-	50,858	-
1978	-	-	-	18,353	-	46,606	-
1979	-	-	-	24,289	-	43,450	-
1980	-	-	-	23,241	-	48,323	-
1981	-	-	-	22,832	-	37,900	-
1982	-	-	-	20,071	-	32,644	205
1983	-	-	-	33,432	-	44,459	208
1984	-	-	-	35,615	-	56,406	218
1985	2,111	-	-	29,997	-	55,987	233
1986	4,175	-	-	42,249	-	65,658	252
1987	8,995	-	-	29,438	-	84,558	299
1988	6,189	-	-	40,513	-	117,865	276
1989	4,935	-	-	34,262	-	135,124	235
1990	2,126	-	-	26,613	-	164,641	192
1991	3,715	-	-	46,888	-	213,007	197
1992	2,126	-	-	30,559	-	263,185	225
1993	8,714	300	-	28,006	-	207,230	329
1994	6,722	736	-	33,924	-	223,590	411
1995	-	2,151	-	49,666	-	228,798	461
1996	-	2,375	-	38,697	-	226,436	579
1997	-	5,498	-	47,442	-	217,026	663
1998	-	6,820	-	48,379	1,624	305,354	833
1999	-	5,790	-	45,661	8,614	251,034	1,084
2000	-	5,389	-	12,929	12,896	279,197	1,161
2001	-	5,864	-	17,217	2,402	285,281	1,733
2002	-	4,927	-	18,537	2,288	318,298	1,672
2003	-	2,944	-	26,365	4,659	258,537	971
2004	-	1,967	-	24,904	5,586	260,646	388
2005	-	1,626	6	20,023	3,453	244,350	629
2006	-	2,564	15	29,462	11,826	255,613	759
2007	-	3,559	6	21,244	23,749	276,957	861
2008	-	2,796	-	17,377	36,359	247,300	592
2009	-	3,422	-	17,883	26,687	242,295	271
2010	-	3,090	-	26,907	29,500	256,578	128
2011	-	1,932	-	28,233	39,468	229,095	224
2012	-	2,353	-	28,635	32,198	247,237	171
2013	-	2,022	-	26,435	45,038	260,446	147
2014	-	1,102	-	62,034	40,538	275,356	250
2015	-	1,160	-	61,580	33,272	234,863	357
2016	-	1,273	-	61,064	8,782	236,116	400
2017	-	3,230	-	46,766	11,754	225,372	435
2018	-	2,191	-	61,640	10,482	241,993	262
2019	-	3,532	-	67,317	9,986	289,446	233
2020	-	2,334	-	39,783	10,832	216,217	182
2021	-	878	-	46,308	13,829	250,601	235

Table 6 continued

YEAR	TOKELAU	TUVALU	UNITED STATES OF AMERICA	VANUATU	VIETNAM	WALLIS ET FUTUNA	EASTERN PACIFIC NEI	TOTAL
1960	—	—	708	—	—	—	—	265,249
1961	—	—	626	—	—	—	—	323,115
1962	—	—	669	—	—	—	—	348,767
1963	—	—	549	—	—	—	—	296,480
1964	—	—	516	—	—	—	—	340,008
1965	—	—	501	—	—	—	—	330,415
1966	—	—	513	—	—	—	—	450,914
1967	—	—	446	—	—	—	—	399,821
1968	—	—	367	—	—	—	—	371,574
1969	—	—	439	—	—	—	—	398,739
1970	—	—	493	—	—	—	—	457,407
1971	—	—	437	—	—	—	—	478,567
1972	—	—	419	—	—	—	—	520,785
1973	—	—	307	—	—	—	—	637,274
1974	—	—	347	—	—	—	—	655,714
1975	—	—	310	—	—	—	—	583,712
1976	—	—	1,071	—	—	—	—	726,017
1977	—	—	1,359	—	—	—	672	754,105
1978	—	—	1,477	—	—	—	926	804,352
1979	—	—	11,852	—	—	—	734	771,621
1980	—	—	13,483	—	—	—	114	837,336
1981	—	—	40,495	—	—	—	98	809,210
1982	—	216	75,494	—	—	—	75	862,065
1983	—	337	181,592	—	—	—	2,167	1,070,264
1984	—	540	162,380	—	—	—	10,188	1,161,006
1985	—	4	110,031	—	—	—	1,221	1,015,430
1986	—	390	123,517	—	—	—	—	1,339,447
1987	—	632	145,073	—	—	—	405	1,153,024
1988	—	1,090	122,380	—	—	—	—	1,293,631
1989	—	149	148,339	—	—	—	—	1,321,368
1990	—	90	171,301	—	—	—	—	1,442,203
1991	—	29	225,040	—	—	—	—	1,668,792
1992	—	8	209,243	—	—	—	—	1,605,568
1993	—	—	203,518	—	—	—	—	1,484,379
1994	—	—	215,683	819	—	—	—	1,625,994
1995	—	—	176,126	7,276	—	—	211	1,634,856
1996	—	—	158,218	11,498	—	—	642	1,639,027
1997	—	—	154,149	26,164	—	—	1,776	1,681,190
1998	—	—	184,278	39,423	—	—	2,934	2,065,112
1999	—	—	191,739	46,161	—	—	1,910	1,851,836
2000	—	—	135,410	38,115	33,632	—	2,925	1,973,137
2001	—	—	128,503	11,966	35,400	—	510	1,885,003
2002	8	—	136,189	28,289	37,683	—	244	2,071,923
2003	3	—	101,004	28,733	37,458	—	2,600	2,102,118
2004	3	—	79,395	66,860	50,521	—	2,014	2,275,378
2005	6	19	97,870	88,918	52,409	—	709	2,244,169
2006	6	12	81,165	76,470	52,573	—	709	2,304,491
2007	8	26	103,576	82,759	54,210	—	709	2,535,357
2008	8	22	221,185	48,179	49,903	—	709	2,580,008
2009	12	4,456	292,702	53,301	44,241	—	709	2,633,561
2010	4	10,582	256,977	39,894	41,665	—	709	2,528,303
2011	4	10,805	214,924	35,125	49,584	13	709	2,364,196
2012	229	16,469	272,718	40,569	65,556	—	709	2,683,005
2013	177	11,896	265,119	41,198	78,631	9	—	2,729,689
2014	86	6,355	323,264	32,391	80,842	7	—	2,905,962
2015	179	5,129	249,184	27,781	89,063	6	—	2,662,135
2016	179	6,677	212,655	15,754	123,076	7	—	2,720,548
2017	67	6,446	177,228	19,194	112,626	5	—	2,590,937
2018	55	11,788	208,919	24,326	120,535	11	—	2,818,592
2019	67	7,348	177,462	45,107	109,315	19	—	2,987,931
2020	51	10,298	148,665	54,884	95,540	13	—	2,703,921
2021	51	30,081	61,677	55,669	89,017	13	—	2,493,571

Table 7. Catches of albacore in the Pacific Ocean. "OTHER" includes purse seine catches.

YEAR	SOUTH PACIFIC OCEAN					NORTH PACIFIC OCEAN					TOTAL
	LONGLINE	POLE-AND-LINE	TROLL	OTHER	SUBTOTAL	LONGLINE	POLE-AND-LINE	TROLL	OTHER	SUBTOTAL	
1960	22,248	45	0	0	22,293	17,384	25,156	20,105	769	63,414	85,707
1961	23,742	0	0	0	23,742	17,490	21,476	12,059	1,631	52,656	76,398
1962	35,219	0	0	0	35,219	15,850	9,814	19,753	1,926	47,343	82,562
1963	31,095	16	0	0	31,111	14,079	28,852	25,145	1,438	69,514	100,625
1964	22,824	0	0	0	22,824	15,659	27,269	18,391	1,271	62,590	85,414
1965	25,455	0	0	0	25,455	14,226	41,908	16,557	863	73,554	99,009
1966	38,661	0	0	0	38,661	25,600	24,430	15,377	1,285	66,692	105,353
1967	43,952	0	5	0	43,957	29,821	34,594	17,975	1,316	83,706	127,663
1968	32,368	0	14	0	32,382	25,152	21,503	21,462	2,327	70,444	102,826
1969	24,805	0	0	0	24,805	19,223	35,144	20,192	1,838	76,397	101,202
1970	34,775	100	50	0	34,925	19,229	28,801	21,422	1,656	71,108	106,033
1971	38,530	100	0	0	38,630	14,982	55,422	22,272	2,436	95,112	133,742
1972	39,131	122	268	0	39,521	19,025	64,341	27,521	1,659	112,546	152,067
1973	46,705	141	484	0	47,330	17,030	71,044	17,053	2,006	107,133	154,463
1974	33,039	112	898	0	34,049	14,047	78,353	21,509	1,384	115,293	149,342
1975	22,849	105	646	0	23,600	14,547	55,395	19,043	1,219	90,204	113,804
1976	28,957	100	25	0	29,082	18,510	88,036	16,183	3,217	125,946	155,028
1977	38,019	100	621	0	38,740	17,684	33,431	10,022	2,264	63,401	102,141
1978	32,890	100	1,686	0	34,676	13,851	60,827	16,636	8,064	99,378	134,054
1979	26,162	100	814	0	27,076	14,738	44,965	7,302	4,211	71,216	98,292
1980	30,972	101	1,468	0	32,541	15,635	47,124	7,768	4,707	75,234	107,775
1981	32,694	0	2,085	5	34,784	19,466	28,174	12,837	11,526	72,003	106,787
1982	28,347	1	2,434	6	30,788	18,838	30,039	6,713	13,963	69,553	100,341
1983	24,309	0	744	39	25,092	16,586	21,705	9,584	7,676	55,551	80,643
1984	20,340	2	2,773	1,589	24,704	16,992	27,043	9,354	18,670	72,059	96,763
1985	27,138	0	3,253	1,937	32,328	16,682	22,212	6,471	14,947	60,312	92,640
1986	32,641	0	2,003	1,946	36,590	14,444	16,528	4,738	10,938	46,648	83,238
1987	21,979	9	2,134	930	25,052	15,608	19,240	2,870	11,509	49,227	74,279
1988	28,288	0	4,296	5,283	37,867	15,795	6,814	4,602	18,968	46,179	84,046
1989	18,738	0	8,370	21,968	49,076	14,624	8,683	2,235	19,986	45,528	94,604
1990	21,304	245	6,975	7,538	36,062	16,615	8,647	3,140	26,159	54,561	90,623
1991	26,292	14	7,805	1,489	35,600	18,050	7,103	2,219	10,798	38,170	73,770
1992	32,014	11	6,578	65	38,668	19,991	13,888	5,169	16,580	55,628	94,296
1993	30,998	74	4,296	70	35,438	31,148	12,809	6,983	4,112	55,052	90,490
1994	34,998	67	7,164	89	42,318	30,838	26,391	13,369	3,486	74,084	116,402
1995	30,508	139	7,724	104	38,475	37,252	21,061	10,993	1,725	71,031	109,506
1996	26,763	30	7,453	156	34,402	42,038	20,296	21,985	1,070	85,389	119,791
1997	34,657	21	4,679	133	39,490	48,433	32,323	18,823	2,736	102,315	141,805
1998	44,152	36	6,302	85	50,575	48,334	23,032	20,241	3,237	94,844	145,419
1999	35,959	138	3,503	74	39,674	50,240	50,529	14,106	11,155	126,030	165,704
2000	41,430	102	6,790	139	48,461	43,457	21,641	15,596	4,985	85,679	134,140
2001	57,999	37	5,455	199	63,690	38,918	29,587	16,944	3,002	88,451	152,141
2002	70,279	18	4,827	150	75,274	35,775	48,843	16,467	6,219	107,304	182,578
2003	57,323	12	6,672	130	64,137	34,877	36,180	21,891	3,264	96,212	160,349
2004	58,291	110	4,990	123	63,514	30,672	32,484	22,321	9,131	94,608	158,122
2005	60,996	29	3,592	137	64,754	32,810	16,216	14,145	3,352	66,523	131,277
2006	62,217	29	3,005	188	65,439	35,779	15,429	19,067	1,231	71,506	136,945
2007	57,226	17	2,067	60	59,370	31,984	37,789	18,676	6,532	94,981	154,351
2008	59,829	12	3,502	160	63,503	28,478	19,060	17,902	2,953	68,393	131,896
2009	82,151	21	2,031	211	84,414	29,046	33,390	19,170	2,954	84,560	168,974
2010	88,506	14	2,139	190	90,849	28,374	19,561	19,751	1,043	68,729	159,578
2011	63,013	30	3,189	233	66,465	30,809	26,704	16,900	1,263	75,676	142,141
2012	86,633	41	2,962	248	89,884	35,534	33,757	17,259	5,175	91,725	181,609
2013	84,482	26	3,226	248	87,982	32,955	33,576	17,711	3,419	87,661	175,643
2014	80,144	26	2,424	248	82,842	28,834	29,433	18,350	3,512	80,129	162,971
2015	80,720	24	2,602	263	83,609	31,441	21,294	16,190	2,576	71,501	155,110
2016	69,981	40	2,158	333	72,512	22,533	14,442	13,749	3,717	54,441	126,953
2017	91,867	14	2,424	199	94,504	25,009	20,893	9,371	2,122	57,395	151,899
2018	80,261	16	2,702	380	83,359	22,175	17,914	10,523	3,572	54,184	137,543
2019	82,998	43	2,779	263	86,083	24,069	17,914	10,247	5,217	57,447	143,530
2020	66,356	254	4,733	331	71,674	18,330	8,532	9,750	2,269	38,881	110,555
2021	47,377	240	4,037	519	52,173	22,178	8,532	6,718	1,804	39,232	91,405

Table 8. Catches of bigeye in the Pacific Ocean.

YEAR	WESTERN AND CENTRAL PACIFIC OCEAN					EASTERN PACIFIC OCEAN					TOTAL
	LONGLINE	POLE-AND-LINE	PURSE SEINE	OTHER	SUBTOTAL	LONGLINE	POLE-AND-LINE	PURSE SEINE	OTHER	SUBTOTAL	
1960	43,467	1,500	58	0	45,025	17,722	0	24	0	17,746	62,771
1961	37,517	1,800	63	0	39,380	52,431	106	105	0	52,642	92,022
1962	35,895	800	173	0	36,868	45,050	318	302	0	45,670	82,538
1963	42,540	1,800	6	0	44,346	66,617	140	0	0	66,757	111,103
1964	30,978	1,143	231	28	32,380	46,279	127	0	0	46,406	78,786
1965	29,844	1,254	201	30	31,329	29,164	231	0	0	29,395	60,724
1966	31,949	1,108	9	86	33,152	34,800	292	210	0	35,302	68,454
1967	32,791	2,803	62	253	35,909	35,878	1,305	1,697	0	38,880	74,789
1968	27,199	2,272	194	204	29,869	35,233	115	4,618	0	39,966	69,835
1969	32,371	3,350	49	62	35,832	52,071	0	1,093	0	53,164	88,996
1970	34,348	3,178	757	2,802	41,085	33,341	0	2,411	0	35,752	76,837
1971	36,798	1,862	864	3,057	42,581	29,804	75	4,359	18	34,256	76,837
1972	49,334	1,762	864	3,497	55,457	36,128	126	3,971	0	40,225	95,682
1973	40,285	1,258	1,001	4,218	46,762	50,777	236	3,342	0	54,355	101,117
1974	41,787	1,039	1,347	4,719	48,892	36,961	0	1,554	0	38,515	87,407
1975	57,623	1,334	1,554	4,938	65,449	41,733	36	6,574	0	48,343	113,792
1976	68,514	3,423	2,239	4,123	78,299	54,290	75	17,212	7	71,584	149,883
1977	66,249	3,325	3,020	5,627	78,221	74,086	2	11,161	0	85,249	163,470
1978	50,502	3,337	3,032	4,231	61,102	70,659	0	18,539	0	89,198	150,300
1979	57,319	2,540	3,565	4,615	68,039	55,435	0	12,097	1	67,533	135,572
1980	57,233	2,916	4,239	3,663	68,051	64,335	0	21,938	130	86,403	154,454
1981	42,331	3,382	12,136	4,244	62,093	53,416	0	14,921	7	68,344	130,437
1982	45,896	4,993	19,154	4,005	74,048	53,365	42	6,939	3	60,349	134,397
1983	42,453	5,077	27,097	4,371	78,998	60,043	39	4,575	37	64,694	143,692
1984	47,516	4,557	27,490	4,625	84,188	46,394	2	8,861	11	55,268	139,456
1985	52,454	5,529	20,790	5,560	84,333	66,325	2	6,056	15	72,398	156,731
1986	47,926	4,133	43,385	5,856	101,300	102,425	0	2,686	74	105,185	206,485
1987	60,147	4,602	35,282	5,263	105,294	100,121	0	1,177	49	101,347	206,641
1988	50,701	5,890	29,654	6,404	92,649	72,758	5	1,535	15	74,313	166,962
1989	54,773	6,131	32,908	7,012	100,824	70,963	0	2,030	1	72,994	173,818
1990	66,976	5,985	43,673	7,708	124,342	98,871	0	5,921	59	104,851	229,193
1991	48,875	3,929	46,064	8,859	107,727	104,195	31	4,870	25	109,121	216,848
1992	64,018	4,055	57,192	5,931	131,196	84,808	0	7,179	13	92,000	223,196
1993	58,348	4,505	45,057	5,514	113,424	72,498	0	9,657	35	82,190	195,614
1994	68,326	5,251	43,385	7,661	124,623	71,360	0	34,899	806	107,065	231,688
1995	58,821	6,228	37,043	8,284	110,376	58,269	0	45,321	1,369	104,959	215,335
1996	49,936	7,940	39,049	10,228	107,153	46,958	0	61,311	748	109,017	216,170
1997	61,240	6,563	58,266	7,671	133,740	52,580	0	64,272	20	116,872	250,612
1998	76,424	6,405	60,588	9,190	152,607	46,375	0	44,129	628	91,132	243,739
1999	68,629	5,856	79,786	8,915	163,186	36,450	0	51,158	538	88,146	251,332
2000	65,964	6,838	66,504	9,942	149,248	47,605	0	94,640	253	142,498	291,746
2001	66,829	5,905	53,713	9,154	135,601	68,755	0	61,156	19	129,930	265,531
2002	82,471	6,109	60,409	9,947	158,936	74,424	0	57,440	12	131,876	290,812
2003	71,027	5,296	56,613	10,995	143,931	59,776	0	54,174	21	113,971	257,902
2004	88,117	9,238	73,109	12,481	182,945	43,483	0	67,592	194	111,269	294,214
2005	71,767	6,851	71,684	5,407	155,709	41,432	0	67,895	25	109,352	265,061
2006	78,562	9,781	71,128	5,598	165,069	33,802	0	83,837	40	117,679	282,748
2007	76,661	7,296	74,807	6,389	165,153	29,847	0	63,451	44	93,342	258,495
2008	77,415	9,204	78,595	6,104	171,318	26,136	0	75,028	28	101,192	272,510
2009	76,292	7,916	79,860	5,100	169,168	31,282	0	76,800	15	108,097	277,265
2010	64,349	7,027	64,445	4,106	139,927	35,227	0	57,753	1,804	94,784	234,711
2011	69,978	5,655	87,368	5,272	168,273	32,630	0	56,512	0	89,142	257,415
2012	75,150	3,932	75,822	12,437	167,341	36,166	0	66,020	8	102,194	269,535
2013	55,810	5,005	82,257	11,810	154,882	36,204	0	52,524	17	88,745	243,627
2014	69,447	4,712	80,062	14,808	169,029	37,387	0	54,495	17	91,899	260,928
2015	66,684	5,686	58,783	14,569	145,722	41,626	0	62,913	21	104,560	250,282
2016	57,996	3,931	73,686	21,186	156,799	35,535	0	56,731	22	92,288	249,087
2017	51,619	2,263	66,047	10,653	130,582	35,360	0	66,973	42	102,375	232,957
2018	62,483	4,163	73,765	11,168	151,579	29,707	0	64,522	18	94,247	245,826
2019	64,463	1,512	49,905	14,541	130,421	27,903	0	69,224	18	97,145	227,566
2020	51,487	1,771	74,116	20,055	147,429	20,436	0	74,981	33	95,450	242,879
2021	44,036	1,680	79,189	38,318	163,223	20,436	0	74,981	33	95,450	258,673

Table 9. Catches of skipjack in the Pacific Ocean

YEAR	WESTERN AND CENTRAL PACIFIC OCEAN					EASTERN PACIFIC OCEAN					TOTAL
	LONGLINE	POLE-AND-LINE	PURSE SEINE	OTHER	SUBTOTAL	LONGLINE	POLE-AND-LINE	PURSE SEINE	OTHER	SUBTOTAL	
1960	0	70,428	3,728	15,782	89,938	0	28,929	16,649	481	46,059	135,997
1961	0	127,011	11,693	18,032	156,736	0	28,995	45,706	428	75,129	231,865
1962	4	152,387	11,674	17,559	181,624	0	17,660	58,939	503	77,102	258,726
1963	0	94,757	9,592	18,354	122,703	0	17,138	82,404	2,389	101,931	224,634
1964	5	137,106	25,006	20,801	182,918	0	10,306	51,759	3,609	65,674	248,592
1965	11	129,933	4,657	20,620	155,221	0	19,867	64,056	1,046	84,969	240,190
1966	50	215,600	10,949	22,913	249,512	0	14,083	50,264	1,960	66,307	315,819
1967	101	168,846	10,929	24,930	204,806	0	18,016	104,928	5,038	127,982	332,788
1968	60	162,379	7,599	24,929	194,967	0	7,340	59,642	10,128	77,110	272,077
1969	124	168,084	5,045	30,070	203,323	0	6,970	46,020	11,904	64,894	268,217
1970	1,260	197,873	10,721	32,164	242,018	0	7,470	47,466	7,234	62,170	304,188
1971	1,440	180,945	17,138	29,164	228,687	0	11,679	94,502	6,702	112,883	341,570
1972	1,524	172,827	21,928	41,783	238,062	0	6,556	29,804	1,144	37,504	275,566
1973	1,838	253,217	23,565	50,407	329,027	0	9,135	39,247	638	49,020	378,047
1974	2,088	289,202	15,703	49,528	356,521	0	7,629	79,418	510	87,557	444,078
1975	1,893	218,271	18,089	50,189	288,442	0	13,848	120,358	526	134,732	423,174
1976	2,056	276,582	26,968	51,216	356,822	0	11,256	124,957	705	136,918	493,740
1977	3,107	294,641	37,465	66,475	401,688	0	7,522	84,603	1,960	94,085	495,773
1978	3,219	331,401	39,761	73,644	448,025	0	6,047	172,294	1,324	179,665	627,690
1979	2,175	285,859	60,369	60,440	408,843	0	6,346	133,695	1,462	141,503	550,346
1980	630	333,597	79,459	34,945	448,631	0	5,225	130,912	1,965	138,102	586,733
1981	754	296,065	89,836	39,558	426,213	0	5,906	119,165	930	126,001	552,214
1982	970	264,726	149,895	44,021	459,612	0	3,760	100,499	410	104,669	564,281
1983	2,143	298,928	282,931	45,450	629,452	0	4,387	56,851	737	61,975	691,427
1984	867	366,811	296,437	39,870	703,985	0	2,884	59,859	868	63,611	767,596
1985	1,100	238,932	268,074	39,603	547,709	0	946	50,829	227	52,002	599,711
1986	1,434	322,665	438,386	46,622	809,107	0	1,921	65,634	190	67,745	876,852
1987	2,320	252,142	337,443	46,829	638,734	0	2,233	64,019	214	66,466	705,200
1988	1,930	295,325	443,010	49,571	789,836	0	4,325	87,113	689	92,127	881,963
1989	2,502	275,088	424,111	48,272	749,973	0	2,940	94,934	1,047	98,921	848,894
1990	358	211,573	522,292	75,714	809,937	0	823	74,369	1,915	77,107	887,044
1991	882	259,778	687,372	77,113	1,025,145	0	1,717	62,228	1,945	65,890	1,091,035
1992	431	218,765	636,618	72,336	928,150	0	1,957	84,283	1,054	87,294	1,015,444
1993	569	255,152	549,903	58,831	864,455	0	3,772	83,830	2,317	89,919	954,374
1994	353	209,636	660,601	68,918	939,508	0	3,240	70,126	804	74,170	1,013,678
1995	572	247,744	648,721	80,441	977,478	0	5,253	127,047	1,988	134,288	1,111,766
1996	3,874	242,486	661,302	95,543	1,003,205	0	2,555	103,973	1,313	107,841	1,111,046
1997	3,932	236,999	615,326	86,675	942,932	0	3,260	153,456	231	156,947	1,099,879
1998	4,904	266,772	874,510	100,901	1,247,087	0	1,684	140,631	531	142,846	1,389,933
1999	4,064	255,330	718,279	95,226	1,072,899	0	2,044	261,565	1,594	265,203	1,338,102
2000	4,516	264,407	808,667	120,559	1,198,149	68	231	204,307	67	204,673	1,402,822
2001	5,036	212,668	785,400	101,449	1,104,553	1,214	448	143,561	34	145,257	1,249,810
2002	3,376	207,488	944,148	101,162	1,256,174	261	616	153,303	119	154,299	1,410,473
2003	3,693	238,179	895,091	110,755	1,247,718	634	638	274,529	2,777	278,578	1,526,296
2004	3,841	249,936	966,244	137,309	1,357,330	713	528	198,664	1,105	201,010	1,558,340
2005	1,045	216,715	1,067,947	132,422	1,418,129	231	1,300	263,229	1,780	266,540	1,684,669
2006	1,470	208,220	1,123,301	146,395	1,479,386	224	435	296,269	986	297,914	1,777,300
2007	1,132	212,720	1,274,331	175,166	1,663,349	107	276	208,296	1,065	209,744	1,873,093
2008	781	218,070	1,248,110	182,114	1,649,075	56	501	296,603	1,163	298,323	1,947,398
2009	1,149	200,692	1,418,357	141,140	1,761,338	184	151	230,527	1,112	231,974	1,993,312
2010	1,151	222,948	1,322,621	133,643	1,680,363	121	47	147,192	2,964	150,324	1,830,687
2011	1,085	206,542	1,201,393	127,786	1,536,806	1,384	24	276,035	851	278,294	1,815,100
2012	1,899	170,234	1,399,561	160,250	1,731,944	2,381	303	266,215	1,040	269,939	2,001,883
2013	1,045	168,856	1,502,252	159,243	1,831,396	2,024	167	272,500	774	275,465	2,106,861
2014	1,405	148,452	1,659,715	175,560	1,985,132	230	167	261,977	774	263,148	2,248,280
2015	1,790	151,156	1,431,757	203,811	1,788,514	189	1	328,907	1,256	330,353	2,118,867
2016	5,569	156,503	1,406,436	220,259	1,788,767	214	0	337,562	717	338,493	2,127,260
2017	2,548	123,308	1,295,896	188,280	1,610,032	170	0	324,759	879	325,808	1,935,840
2018	4,091	183,851	1,479,227	175,532	1,842,701	1,191	0	288,820	407	290,418	2,133,119
2019	5,362	158,161	1,719,081	155,339	2,037,943	218	0	347,405	408	348,031	2,385,974
2020	2,119	159,365	1,436,197	121,820	1,719,501	454	0	297,299	84	297,837	2,017,338
2021	3,347	97,866	1,278,620	167,452	1,547,285	454	0	297,299	84	297,837	1,845,122

Table 10. Catches of yellowfin in the Pacific Ocean

YEAR	WESTERN AND CENTRAL PACIFIC OCEAN					EASTERN PACIFIC OCEAN					TOTAL
	LOONGLINE	POLE-AND-LINE	PURSE SEINE	OTHER	SUBTOTAL	LOONGLINE	POLE-AND-LINE	PURSE SEINE	OTHER	SUBTOTAL	
1960	55,020	1,872	1,438	15,337	73,667	5,934	22,151	79,425	458	107,968	181,635
1961	53,166	3,259	2,777	16,236	75,438	12,500	15,220	80,058	949	108,727	184,165
1962	55,547	4,225	6,975	17,197	83,944	10,211	11,052	56,271	706	78,240	162,184
1963	53,185	2,071	2,277	18,223	75,756	18,973	7,041	48,004	688	74,706	150,462
1964	45,241	5,074	3,647	20,186	74,148	16,975	3,989	78,318	738	100,202	174,168
1965	45,487	3,434	3,752	20,956	73,629	15,620	6,983	65,348	312	88,263	161,892
1966	61,623	2,192	5,844	23,409	93,068	9,097	5,302	68,982	507	83,888	176,956
1967	35,720	3,125	3,428	26,303	68,576	9,285	4,512	65,442	1,534	80,773	149,349
1968	45,572	2,706	7,083	26,085	81,446	14,986	4,307	86,542	3,241	109,076	190,522
1969	51,372	5,166	3,867	26,612	87,017	15,329	7,195	113,665	1,866	138,055	225,072
1970	55,481	4,606	9,155	29,422	98,664	12,643	4,260	139,385	4,850	161,138	259,802
1971	56,927	5,248	10,748	31,204	104,127	8,013	5,300	104,863	2,482	120,658	224,785
1972	60,251	7,465	11,496	35,749	114,961	16,859	6,060	164,297	1,060	188,276	303,237
1973	61,818	7,458	16,711	41,726	127,713	11,697	3,933	194,200	661	210,491	338,204
1974	57,490	6,582	19,542	46,997	130,611	7,190	8,188	191,626	1,230	208,234	338,845
1975	68,416	7,801	15,480	48,536	140,233	10,640	5,629	183,028	567	199,864	340,097
1976	76,363	17,186	17,676	40,666	151,891	15,632	3,280	215,108	358	234,378	386,269
1977	92,680	15,257	20,408	55,092	183,437	12,355	1,841	184,922	248	199,366	382,803
1978	108,428	12,767	16,728	38,491	176,414	10,188	3,888	158,801	1,103	173,980	350,394
1979	104,932	11,638	35,287	46,375	198,232	11,473	4,789	170,650	212	187,124	385,356
1980	122,611	15,142	40,354	39,583	217,690	13,477	1,481	143,042	862	158,862	376,552
1981	95,574	22,044	64,857	44,533	227,008	7,999	1,477	168,234	800	178,510	405,518
1982	85,175	17,123	91,350	41,603	235,251	10,961	1,538	114,755	280	127,534	362,785
1983	87,734	17,184	139,345	45,179	289,442	10,895	4,007	83,929	849	99,680	389,122
1984	74,210	17,633	147,769	50,440	290,052	10,345	2,991	135,785	344	149,465	439,517
1985	77,674	22,717	139,652	57,803	297,846	13,198	1,070	211,459	212	225,939	523,785
1986	66,594	17,970	200,278	60,968	345,810	22,808	2,537	260,512	214	286,071	631,881
1987	72,687	19,044	184,839	57,367	333,937	18,911	5,107	262,008	138	286,164	620,101
1988	84,257	20,566	148,162	68,021	321,006	14,660	3,723	277,293	752	296,428	617,434
1989	69,921	22,133	219,921	71,530	383,505	17,032	4,145	277,996	263	299,436	682,941
1990	74,876	20,769	250,788	83,156	429,589	34,633	2,676	263,253	960	301,522	731,111
1991	58,566	19,182	290,206	92,536	460,490	30,899	2,856	231,257	958	265,970	726,460
1992	74,429	23,043	299,261	59,777	456,510	18,646	3,789	228,121	1,958	252,514	709,024
1993	69,375	20,486	269,052	59,188	418,101	24,009	4,951	219,492	3,034	251,486	669,587
1994	76,879	21,378	275,450	75,514	449,221	30,026	3,625	208,408	1,487	243,546	692,767
1995	85,210	23,209	252,001	82,395	442,815	20,596	1,268	215,434	2,066	239,364	682,179
1996	88,254	30,551	206,977	99,923	425,705	16,608	3,762	238,607	1,639	260,616	686,321
1997	78,069	22,845	296,448	83,763	481,125	22,163	4,418	244,878	600	272,059	753,184
1998	76,130	27,506	331,463	101,754	536,853	15,336	5,085	253,959	1,529	275,909	812,762
1999	68,539	26,787	276,795	103,038	475,159	11,682	1,783	281,920	2,706	298,091	773,250
2000	90,973	26,957	279,175	109,860	506,965	23,855	2,431	255,231	1,109	282,626	789,591
2001	89,825	24,443	292,344	99,047	505,659	29,608	3,916	382,702	520	416,746	922,405
2002	91,098	24,133	270,294	106,365	491,890	25,531	950	412,507	549	439,537	931,427
2003	91,031	24,304	328,305	121,893	565,533	25,174	470	381,107	1,145	407,896	973,429
2004	101,627	30,640	328,236	137,596	598,099	18,779	1,884	269,597	627	290,887	888,986
2005	83,623	27,007	362,976	79,648	553,254	12,118	1,821	268,102	1,852	283,893	837,147
2006	80,995	23,544	347,990	87,244	539,773	9,316	686	166,629	1,458	178,089	717,862
2007	79,683	26,460	358,388	102,516	567,047	7,779	894	170,016	1,439	180,128	747,175
2008	82,989	22,639	437,985	100,814	644,427	8,371	812	185,057	941	195,181	839,608
2009	97,181	23,859	340,686	96,720	558,446	8,479	709	236,771	995	246,954	805,400
2010	96,562	20,077	355,026	94,540	566,205	6,645	460	251,008	2,641	260,754	826,959
2011	95,903	36,772	317,304	81,251	531,230	8,071	276	206,851	806	216,004	747,234
2012	84,961	34,638	404,868	101,220	625,687	12,953	400	198,017	1,236	212,606	838,293
2013	75,191	21,834	377,533	103,994	578,552	11,414	754	220,038	865	233,071	811,623
2014	97,812	23,982	386,433	109,836	618,063	6,903	754	241,158	865	249,680	867,743
2015	100,883	35,580	321,956	130,866	589,285	10,649	15	245,727	3,583	259,974	849,259
2016	86,709	23,234	416,886	133,755	660,584	9,799	5	242,118	2,876	254,798	915,382
2017	83,349	24,793	510,876	93,704	712,722	10,481	4	210,981	2,685	224,151	936,873
2018	94,717	26,052	388,851	191,828	701,448	12,040	0	238,981	1,412	252,433	953,881
2019	102,521	17,583	358,021	216,058	694,183	11,663	0	228,313	1,397	241,373	935,556
2020	72,217	30,469	409,583	218,916	731,185	9,396	0	219,079	127	228,602	959,787
2021	68,167	15,256	410,729	195,126	689,278	9,396	0	219,079	127	228,602	917,880

Table 11. Catches of albacore, bigeye, skipjack and yellowfin in the WCPO

YEAR	ALBACORE		BIGEYE		SKIPJACK		YELLOWFIN		TOTAL
	TONNES	%	TONNES	%	TONNES	%	TONNES	%	
1960	56,619	21	45,025	17	89,938	34	73,667	28	265,249
1961	51,561	16	39,380	12	156,736	49	75,438	23	323,115
1962	46,331	13	36,868	11	181,624	52	83,944	24	348,767
1963	53,675	18	44,346	15	122,703	41	75,756	26	296,480
1964	50,510	15	32,380	10	182,918	54	74,148	22	339,956
1965	70,215	21	31,329	9	155,221	47	73,629	22	330,394
1966	75,010	17	33,152	7	249,512	55	93,068	21	450,742
1967	85,884	22	35,909	9	204,806	52	68,576	17	395,175
1968	61,379	17	29,869	8	194,967	53	81,446	22	367,661
1969	71,137	18	35,832	9	203,323	51	87,017	22	397,309
1970	71,496	16	41,085	9	242,018	53	98,664	22	453,263
1971	96,125	20	42,581	9	228,687	48	104,127	22	471,520
1972	106,697	21	55,457	11	238,062	46	114,961	22	515,177
1973	129,538	20	46,762	7	329,027	52	127,713	20	633,040
1974	112,827	17	48,892	8	356,521	55	130,611	20	648,851
1975	83,864	15	65,449	11	288,442	50	140,233	24	577,988
1976	131,620	18	78,299	11	356,822	50	151,891	21	718,632
1977	79,436	11	78,221	11	401,688	54	183,437	25	742,782
1978	105,771	13	61,102	8	448,025	57	176,414	22	791,312
1979	84,878	11	68,039	9	408,843	54	198,232	26	759,992
1980	94,123	11	68,051	8	448,631	54	217,690	26	828,495
1981	86,385	11	62,093	8	426,213	53	227,008	28	801,699
1982	86,847	10	74,048	9	459,612	54	235,251	27	855,758
1983	64,112	6	78,998	7	629,452	59	289,442	27	1,062,004
1984	73,452	6	84,188	7	703,985	61	290,052	25	1,151,677
1985	76,034	8	84,333	8	547,709	54	297,846	30	1,005,922
1986	71,045	5	101,300	8	809,107	61	345,810	26	1,327,262
1987	60,625	5	105,294	9	638,734	56	333,937	29	1,138,590
1988	62,279	5	92,649	7	789,836	62	321,006	25	1,265,770
1989	69,949	5	100,824	8	749,973	58	383,505	29	1,304,251
1990	60,990	4	124,342	9	809,937	57	429,589	30	1,424,858
1991	56,449	3	107,727	7	1,025,145	62	460,490	28	1,649,811
1992	62,483	4	131,196	8	928,150	59	456,510	29	1,578,339
1993	71,723	5	113,424	8	864,455	59	418,101	28	1,467,703
1994	91,696	6	124,623	8	939,508	59	449,221	28	1,605,048
1995	89,851	6	110,376	7	977,478	60	442,815	27	1,620,520
1996	88,874	5	107,153	7	1,003,205	62	425,705	26	1,624,937
1997	109,798	7	133,740	8	942,932	57	481,125	29	1,667,595
1998	107,373	5	152,607	7	1,247,087	61	536,853	26	2,043,920
1999	127,428	7	163,186	9	1,072,899	58	475,159	26	1,838,672
2000	96,803	5	149,248	8	1,198,149	61	506,965	26	1,951,165
2001	114,463	6	135,601	7	1,104,553	59	505,659	27	1,860,276
2002	140,122	7	158,936	8	1,256,174	61	491,890	24	2,047,122
2003	110,643	5	143,931	7	1,247,718	60	565,533	27	2,067,825
2004	114,523	5	182,945	8	1,357,330	60	598,099	27	2,252,897
2005	100,984	5	155,709	7	1,418,129	64	553,254	25	2,228,076
2006	100,796	4	165,069	7	1,479,386	65	539,773	24	2,285,024
2007	121,668	5	165,153	7	1,663,349	66	567,047	23	2,517,217
2008	101,027	4	171,318	7	1,649,075	64	644,427	25	2,565,847
2009	130,452	5	169,168	6	1,761,338	67	558,446	21	2,619,404
2010	121,054	5	139,927	6	1,680,363	67	566,205	23	2,507,549
2011	109,608	5	168,273	7	1,536,806	66	531,230	23	2,345,917
2012	137,414	5	167,341	6	1,731,944	65	625,687	24	2,662,386
2013	129,934	5	154,882	6	1,831,396	68	578,552	21	2,694,764
2014	113,899	4	169,029	6	1,985,132	69	618,063	21	2,886,123
2015	107,849	4	145,722	6	1,788,514	68	589,285	22	2,631,370
2016	88,143	3	156,799	6	1,788,767	66	660,584	25	2,694,293
2017	118,429	5	130,582	5	1,610,032	63	712,722	28	2,571,765
2018	104,194	4	151,579	5	1,842,701	66	701,448	25	2,799,922
2019	106,475	4	130,421	4	2,037,943	69	694,183	23	2,969,022
2020	86,874	3	147,429	5	1,719,501	64	731,185	27	2,684,989
2021	73,476	3	163,223	7	1,547,285	63	689,278	28	2,473,262

Table 12. Catches of albacore, bigeye, skipjack and yellowfin in the EPO

YEAR	ALBACORE		BIGEYE		SKIPJACK		YELLOWFIN		TOTAL
	TONNES	%	TONNES	%	TONNES	%	TONNES	%	
1960	23,292	12	17,746	9	46,059	24	107,968	55	195,065
1961	15,862	6	52,642	21	75,129	30	108,727	43	252,360
1962	22,659	10	45,670	20	77,102	34	78,240	35	223,671
1963	29,799	11	66,757	24	101,931	37	74,706	27	273,193
1964	22,586	10	46,406	20	65,674	28	100,020	43	234,686
1965	17,939	8	29,395	13	84,969	39	88,263	40	220,566
1966	17,938	9	35,302	17	66,307	33	83,888	41	203,435
1967	22,524	8	38,880	14	127,982	47	80,773	30	270,159
1968	26,249	10	39,966	16	77,110	31	109,076	43	252,401
1969	22,646	8	53,164	19	64,894	23	138,055	50	278,759
1970	26,809	9	35,752	13	62,170	22	161,138	56	285,869
1971	24,517	8	34,256	12	112,883	39	120,658	41	292,314
1972	29,548	10	40,225	14	37,504	13	188,276	64	295,553
1973	18,763	6	54,355	16	49,020	15	210,491	63	332,629
1974	25,257	7	38,515	11	87,557	24	208,234	58	359,563
1975	23,051	6	48,343	12	134,732	33	199,864	49	405,990
1976	20,577	4	71,584	15	136,918	30	234,378	51	463,457
1977	24,024	6	85,249	21	94,085	23	199,366	50	402,724
1978	31,108	7	89,198	19	179,665	38	173,980	37	473,951
1979	10,953	3	67,533	17	141,503	35	187,124	46	407,113
1980	11,569	3	86,403	22	138,102	35	158,862	40	394,936
1981	20,283	5	68,344	17	126,001	32	178,510	45	393,138
1982	12,522	4	60,349	20	104,669	34	127,534	42	305,074
1983	15,729	6	64,694	27	61,975	26	99,680	41	242,078
1984	21,857	8	55,268	19	63,611	22	149,465	52	290,201
1985	14,841	4	72,398	20	52,002	14	225,939	62	365,180
1986	11,284	2	105,185	22	67,745	14	286,071	61	470,285
1987	12,977	3	101,347	22	66,466	14	286,164	61	466,954
1988	15,771	3	74,313	16	92,127	19	296,428	62	478,639
1989	9,501	2	72,994	15	98,921	21	299,436	62	480,852
1990	10,850	2	104,851	21	77,107	16	301,522	61	494,330
1991	11,481	3	109,121	24	65,890	15	265,970	59	452,462
1992	23,075	5	92,000	20	87,294	19	252,514	56	454,883
1993	15,605	4	82,190	19	89,919	20	251,486	57	439,200
1994	20,618	5	107,065	24	74,170	17	243,546	55	445,399
1995	14,075	3	104,959	21	134,288	27	239,364	49	492,686
1996	16,112	3	109,017	22	107,841	22	260,616	53	493,586
1997	17,279	3	116,872	21	156,947	28	272,059	48	563,157
1998	25,913	5	91,132	17	142,846	27	275,909	51	535,800
1999	26,464	4	88,146	13	265,203	39	298,091	44	677,904
2000	23,275	4	142,498	22	204,673	31	282,626	43	653,072
2001	33,336	5	129,930	18	145,257	20	416,746	57	725,269
2002	30,154	4	131,876	17	154,299	20	439,537	58	755,866
2003	45,538	5	113,971	13	278,578	33	407,896	48	845,983
2004	40,834	6	111,269	17	201,010	31	290,887	45	644,000
2005	27,203	4	109,352	16	266,540	39	283,893	41	686,988
2006	32,992	5	117,679	19	297,914	48	178,089	28	626,674
2007	31,128	6	93,342	18	209,744	41	180,128	35	514,342
2008	26,627	4	101,192	16	298,323	48	195,181	31	621,323
2009	31,619	5	108,097	17	231,974	37	246,954	40	618,644
2010	34,048	6	94,784	18	150,324	28	260,754	48	539,910
2011	37,023	6	89,142	14	278,294	45	216,004	35	620,463
2012	42,309	7	102,194	16	269,939	43	212,606	34	627,048
2013	43,905	7	88,745	14	275,465	43	233,071	36	641,186
2014	51,281	8	91,899	14	263,148	40	249,680	38	656,008
2015	46,097	6	104,560	14	330,353	45	259,974	35	740,984
2016	41,362	6	92,288	13	338,493	47	254,798	35	726,941
2017	35,795	5	102,375	15	325,808	47	224,151	33	688,129
2018	36,527	5	94,247	14	290,418	43	252,433	37	673,625
2019	31,746	4	97,145	14	348,031	48	241,373	34	718,295
2020	23,236	4	95,450	15	297,837	46	228,602	35	645,125
2021	23,236	4	95,450	15	297,837	46	228,602	35	645,125

Table 13. Catches of albacore, bigeye, skipjack and yellowfin in the Pacific Ocean

YEAR	ALBACORE		BIGEYE		SKIPJACK		YELLOWFIN		TOTAL
	TONNES	%	TONNES	%	TONNES	%	TONNES	%	
1960	85,707	18	62,771	13	135,997	29	181,635	39	466,110
1961	76,398	13	92,022	16	231,865	40	184,165	32	584,450
1962	82,562	14	82,538	14	258,726	44	162,184	28	586,010
1963	100,625	17	111,103	19	224,634	38	150,462	26	586,824
1964	85,414	15	78,786	13	248,592	42	174,168	30	586,960
1965	99,009	18	60,724	11	240,190	43	161,892	29	561,815
1966	105,353	16	68,454	10	315,819	47	176,956	27	666,582
1967	127,663	19	74,789	11	332,788	49	149,349	22	684,589
1968	102,826	16	69,835	11	272,077	43	190,522	30	635,260
1969	101,202	15	88,996	13	268,217	39	225,072	33	683,487
1970	106,033	14	76,837	10	304,188	41	259,802	35	746,860
1971	133,742	17	76,837	10	341,570	44	224,785	29	776,934
1972	152,067	18	95,682	12	275,566	33	303,237	37	826,552
1973	154,463	16	101,117	10	378,047	39	338,204	35	971,831
1974	149,342	15	87,407	9	444,078	44	338,845	33	1,019,672
1975	113,804	11	113,792	11	423,174	43	340,097	34	990,867
1976	155,028	13	149,883	13	493,740	42	386,269	33	1,184,920
1977	102,141	9	163,470	14	495,773	43	382,803	33	1,144,187
1978	134,054	11	150,300	12	627,690	50	350,394	28	1,262,438
1979	98,292	8	135,572	12	550,346	47	385,356	33	1,169,566
1980	107,775	9	154,454	13	586,733	48	376,552	31	1,225,514
1981	106,787	9	130,437	11	552,214	46	405,518	34	1,194,956
1982	100,341	9	134,397	12	564,281	49	362,785	31	1,161,804
1983	80,643	6	143,692	11	691,427	53	389,122	30	1,304,884
1984	96,763	7	139,456	10	767,596	53	439,517	30	1,443,332
1985	92,640	7	156,731	11	599,711	44	523,785	38	1,372,867
1986	83,238	5	206,485	11	876,852	49	631,881	35	1,798,456
1987	74,279	5	206,641	13	705,200	44	620,101	39	1,606,221
1988	84,046	5	166,962	10	881,963	50	617,434	35	1,750,405
1989	94,604	5	173,818	10	848,894	47	682,941	38	1,800,257
1990	90,623	5	229,193	12	887,044	46	731,111	38	1,937,971
1991	73,770	3	216,848	10	1,091,035	52	726,460	34	2,108,113
1992	94,296	5	223,196	11	1,015,444	50	709,024	35	2,041,960
1993	90,490	5	195,614	10	954,374	50	669,587	35	1,910,065
1994	116,402	6	231,688	11	1,013,678	49	692,767	34	2,054,535
1995	109,506	5	215,335	10	1,111,766	52	682,179	32	2,118,786
1996	119,791	6	216,170	10	1,111,046	52	686,321	32	2,133,328
1997	141,805	6	250,612	11	1,099,879	49	753,184	34	2,245,480
1998	145,419	6	243,739	9	1,389,933	54	812,762	31	2,591,853
1999	165,704	7	251,332	10	1,338,102	53	773,250	31	2,528,388
2000	134,140	5	291,746	11	1,402,822	54	789,591	30	2,618,299
2001	152,141	6	265,531	10	1,249,810	48	922,405	36	2,589,887
2002	182,578	6	290,812	10	1,410,473	50	931,427	33	2,815,290
2003	160,349	5	257,902	9	1,526,296	52	973,429	33	2,917,976
2004	158,122	5	294,214	10	1,558,340	54	888,986	31	2,899,662
2005	131,277	4	265,061	9	1,684,669	58	837,147	29	2,918,154
2006	136,945	5	282,748	10	1,777,300	61	717,862	25	2,914,855
2007	154,351	5	258,495	9	1,873,093	62	747,175	25	3,033,114
2008	131,896	4	272,510	9	1,947,398	61	839,608	26	3,191,412
2009	168,974	5	277,265	9	1,993,312	61	805,400	25	3,244,951
2010	159,578	5	234,711	8	1,830,687	60	826,959	27	3,051,935
2011	142,141	5	257,415	9	1,815,100	61	747,234	25	2,961,890
2012	181,609	6	269,535	8	2,001,883	61	838,293	25	3,291,320
2013	175,643	5	243,627	7	2,106,861	63	811,623	24	3,337,754
2014	162,971	5	260,928	7	2,248,280	64	867,743	25	3,539,922
2015	155,110	5	250,282	7	2,118,867	63	849,259	25	3,373,518
2016	126,953	4	249,087	7	2,127,260	62	915,382	27	3,418,682
2017	151,899	5	232,957	7	1,935,840	59	936,873	29	3,257,569
2018	137,543	4	245,826	7	2,133,119	61	953,881	27	3,470,369
2019	143,530	4	227,566	6	2,385,974	65	935,556	25	3,692,626
2020	110,555	3	242,879	7	2,017,338	61	959,787	29	3,330,559
2021	91,405	3	258,673	8	1,845,122	59	917,880	29	3,113,080

Table 14. Global catches of albacore, bigeye, skipjack and yellowfin

YEAR	ALBACORE		BIGEYE		SKIPJACK		YELLOWFIN		TOTAL
	TONNES	%	TONNES	%	TONNES	%	TONNES	%	
1960	161,181	23	88,048	13	155,782	22	293,249	42	698,260
1961	146,524	18	124,098	15	253,353	31	284,369	35	808,344
1962	179,312	21	124,222	14	286,687	33	274,099	32	864,320
1963	192,506	22	150,516	18	263,950	31	248,781	29	855,753
1964	195,404	22	120,296	14	287,607	33	277,314	31	880,621
1965	203,023	23	119,244	14	290,750	33	265,353	30	878,370
1966	195,951	20	117,633	12	370,217	38	291,029	30	974,830
1967	225,080	23	124,653	13	391,375	39	254,054	26	995,162
1968	192,556	19	130,909	13	354,626	34	362,124	35	1,040,215
1969	197,398	18	154,977	14	334,044	31	383,848	36	1,070,267
1970	189,463	17	144,625	13	397,338	36	374,636	34	1,106,062
1971	228,382	19	153,542	13	461,690	39	339,961	29	1,183,575
1972	246,756	20	161,256	13	389,294	31	439,874	36	1,237,180
1973	251,633	18	174,016	12	505,836	36	472,488	34	1,403,973
1974	248,632	16	178,143	12	615,443	40	486,620	32	1,528,838
1975	184,759	13	211,237	15	518,679	37	506,034	36	1,420,709
1976	247,134	15	223,066	14	613,886	37	554,489	34	1,638,575
1977	190,096	11	252,937	15	647,489	39	579,272	35	1,669,794
1978	225,434	13	252,445	14	777,949	43	542,359	30	1,798,187
1979	190,713	11	215,055	13	688,631	42	564,828	34	1,659,227
1980	183,350	11	252,557	14	753,218	43	554,467	32	1,743,592
1981	181,321	10	232,881	13	739,493	42	610,266	35	1,763,961
1982	198,371	11	251,147	14	778,525	43	587,190	32	1,815,233
1983	167,689	9	252,815	13	899,685	46	621,455	32	1,941,644
1984	173,562	8	254,070	12	1,008,740	48	661,775	32	2,098,147
1985	179,302	8	287,168	13	860,328	40	805,734	38	2,132,532
1986	204,722	8	329,101	13	1,150,273	44	925,187	35	2,609,283
1987	187,979	8	327,494	13	993,780	41	928,352	38	2,437,605
1988	180,638	7	306,959	11	1,227,860	46	969,149	36	2,684,606
1989	178,606	6	321,300	12	1,215,471	44	1,051,150	38	2,766,527
1990	192,754	6	387,553	13	1,261,339	42	1,166,375	39	3,008,021
1991	159,197	5	390,124	12	1,557,150	48	1,127,654	35	3,234,125
1992	185,765	6	394,339	12	1,471,999	45	1,189,523	37	3,241,626
1993	182,513	6	409,117	12	1,472,544	45	1,224,511	37	3,288,685
1994	212,670	6	474,421	14	1,540,688	45	1,191,588	35	3,419,367
1995	200,128	6	460,980	13	1,612,491	47	1,169,219	34	3,442,818
1996	210,332	6	465,632	14	1,581,322	46	1,183,228	34	3,440,514
1997	228,944	6	508,004	14	1,585,412	45	1,231,577	35	3,553,937
1998	242,337	6	496,097	13	1,882,216	48	1,272,116	33	3,892,766
1999	270,423	7	530,772	13	1,930,801	48	1,269,730	32	4,001,726
2000	243,034	6	524,967	13	1,979,488	49	1,258,433	31	4,005,922
2001	265,782	7	480,145	12	1,837,830	46	1,404,101	35	3,987,858
2002	277,348	7	508,639	12	2,015,090	48	1,412,514	34	4,213,591
2003	248,151	6	479,226	11	2,151,235	49	1,541,477	35	4,420,089
2004	242,688	5	519,801	12	2,180,496	49	1,524,599	34	4,467,584
2005	220,478	5	460,166	10	2,386,679	53	1,437,188	32	4,504,511
2006	234,134	5	469,370	11	2,530,006	57	1,232,120	28	4,465,630
2007	246,068	6	454,448	10	2,482,289	57	1,154,154	27	4,336,959
2008	209,991	5	461,091	10	2,534,550	57	1,269,974	28	4,475,606
2009	248,700	5	478,670	11	2,607,015	58	1,192,730	26	4,527,115
2010	244,374	6	396,003	9	2,444,035	56	1,246,910	29	4,331,322
2011	224,570	5	428,155	10	2,416,961	57	1,186,308	28	4,255,994
2012	267,972	6	465,353	10	2,595,971	56	1,343,980	29	4,673,276
2013	253,898	5	424,638	9	2,799,575	58	1,311,823	27	4,789,934
2014	244,072	5	428,992	9	2,903,535	59	1,381,151	28	4,957,750
2015	234,985	5	426,139	9	2,765,948	58	1,368,556	29	4,795,628
2016	211,653	4	415,018	8	2,858,882	58	1,473,385	30	4,958,938
2017	235,898	5	402,436	8	2,709,849	56	1,495,813	31	4,843,996
2018	228,847	4	413,547	8	3,049,207	58	1,532,520	29	5,224,121
2019	235,929	4	381,491	7	3,245,280	60	1,519,332	28	5,382,032
2020	200,472	4	383,862	8	2,797,957	57	1,539,658	31	4,921,949
2021	181,322	4	399,656	8	2,625,741	56	1,497,751	32	4,704,470

Table 15. Catches of albacore, bigeye, skipjack and yellowfin by ocean area. Estimates for the Atlantic and Indian Ocean that are not yet available for the most recent year, have been carried over.

YEAR	WCPO		EPO		ATLANTIC		INDIAN		TOTAL
	TONNES	%	TONNES	%	TONNES	%	TONNES	%	
1960	265,249	38	200,861	29	145,384	21	86,766	12	698,260
1961	323,115	40	261,335	32	135,230	17	88,664	11	808,344
1962	348,767	40	237,243	27	169,697	20	108,613	13	864,320
1963	296,480	35	290,344	34	188,394	22	80,535	9	855,753
1964	339,956	39	247,004	28	201,987	23	91,674	10	880,621
1965	330,394	38	231,421	26	222,199	25	94,356	11	878,370
1966	450,742	46	215,840	22	181,817	19	126,431	13	974,830
1967	395,175	40	289,414	29	184,929	19	125,644	13	995,162
1968	367,661	35	267,599	26	228,017	22	176,938	17	1,040,215
1969	397,309	37	286,178	27	236,694	22	150,086	14	1,070,267
1970	453,263	41	293,597	27	237,191	21	122,011	11	1,106,062
1971	471,520	40	305,414	26	290,958	25	115,683	10	1,183,575
1972	515,177	42	311,375	25	301,937	24	108,691	9	1,237,180
1973	633,040	45	338,791	24	304,880	22	127,262	9	1,403,973
1974	648,851	42	370,821	24	358,304	23	150,862	10	1,528,838
1975	577,988	41	412,879	29	302,119	21	127,723	9	1,420,709
1976	718,632	44	466,288	28	316,778	19	136,877	8	1,638,575
1977	742,782	44	401,405	24	372,569	22	153,038	9	1,669,794
1978	791,312	44	471,126	26	368,658	21	167,091	9	1,798,187
1979	759,992	46	409,574	25	338,014	20	151,647	9	1,659,227
1980	828,495	48	397,019	23	367,602	21	150,476	9	1,743,592
1981	801,699	45	393,257	22	416,733	24	152,272	9	1,763,961
1982	855,758	47	306,046	17	469,190	26	184,239	10	1,815,233
1983	1,062,004	55	242,880	13	430,504	22	206,256	11	1,941,644
1984	1,151,677	55	291,655	14	372,368	18	282,447	13	2,098,147
1985	1,005,922	47	366,945	17	429,982	20	329,683	15	2,132,532
1986	1,327,262	51	471,194	18	423,538	16	387,289	15	2,609,283
1987	1,138,590	47	467,631	19	403,643	17	427,741	18	2,437,605
1988	1,265,770	47	484,635	18	414,430	15	519,771	19	2,684,606
1989	1,304,251	47	496,006	18	424,384	15	541,886	20	2,766,527
1990	1,424,858	47	513,113	17	489,460	16	580,590	19	3,008,021
1991	1,649,811	51	458,302	14	539,051	17	586,961	18	3,234,125
1992	1,578,339	49	463,621	14	503,396	16	696,270	21	3,241,626
1993	1,467,703	45	442,362	13	554,088	17	824,532	25	3,288,685
1994	1,605,048	47	449,487	13	562,096	16	802,736	23	3,419,367
1995	1,620,520	47	498,266	14	514,855	15	809,177	24	3,442,818
1996	1,624,937	47	508,391	15	489,079	14	818,107	24	3,440,514
1997	1,667,595	47	577,885	16	452,083	13	856,374	24	3,553,937
1998	2,043,920	53	547,933	14	469,574	12	831,339	21	3,892,766
1999	1,838,672	46	689,716	17	502,204	13	971,134	24	4,001,726
2000	1,951,165	49	667,134	17	459,662	11	927,961	23	4,005,922
2001	1,860,276	47	729,611	18	484,624	12	913,347	23	3,987,858
2002	2,047,122	49	768,168	18	394,379	9	1,003,922	24	4,213,591
2003	2,067,825	47	850,151	19	424,528	10	1,077,585	24	4,420,089
2004	2,252,897	50	646,765	14	419,111	9	1,148,811	26	4,467,584
2005	2,228,076	49	690,078	15	399,550	9	1,186,807	26	4,504,511
2006	2,285,024	51	629,831	14	381,814	9	1,168,961	26	4,465,630
2007	2,517,217	58	515,897	12	370,258	9	933,587	22	4,336,959
2008	2,565,847	57	625,565	14	366,618	8	917,576	21	4,475,606
2009	2,619,404	58	625,547	14	421,152	9	861,012	19	4,527,115
2010	2,507,549	58	544,386	13	424,547	10	854,840	20	4,331,322
2011	2,345,917	55	615,973	14	456,295	11	837,809	20	4,255,994
2012	2,662,386	57	628,934	13	489,199	10	892,757	19	4,673,276
2013	2,694,764	56	642,990	13	476,802	10	975,378	20	4,789,934
2014	2,886,123	58	653,799	13	461,121	9	956,707	19	4,957,750
2015	2,631,370	55	742,148	15	494,029	10	928,081	19	4,795,628
2016	2,694,293	54	724,389	15	534,267	11	1,005,989	20	4,958,938
2017	2,571,765	53	685,804	14	529,329	11	1,057,098	22	4,843,996
2018	2,799,922	54	670,447	13	566,069	11	1,187,683	23	5,224,121
2019	2,969,022	55	723,604	13	532,355	10	1,157,051	21	5,382,032
2020	2,684,989	55	645,570	13	483,593	10	1,107,797	23	4,921,949
2021	2,473,262	53	639,818	14	483,593	10	1,107,797	24	4,704,470

Table 16. Estimated Discards (tonnes) by longliners in the WCPFC Statistical Area
(2020-2021 data are provisional)

YEAR	ALBACORE			BIGEYE			YELLOWFIN			TOTAL		
	Retained + Discarded	Discarded	%	Retained + Discarded	Discarded	%	Retained + Discarded	Discarded	%	Retained + Discarded	Discarded	%
1994	65,031	5,892	9.1%	81,487	2,379	2.9%	86,063	4,062	4.7%	232,581	12,333	5.3%
1995	63,335	3,091	4.9%	69,297	1,192	1.7%	92,598	4,500	4.9%	225,229	8,783	3.9%
1996	64,509	3,058	4.7%	59,064	1,028	1.7%	93,045	1,172	1.3%	216,618	5,258	2.4%
1997	80,358	8,534	10.6%	71,115	2,610	3.7%	84,048	3,093	3.7%	235,520	14,237	6.0%
1998	90,143	11,376	12.6%	87,957	3,008	3.4%	83,712	2,721	3.3%	261,812	17,105	6.5%
1999	69,763	942	1.4%	75,641	688	0.9%	72,117	1,111	1.5%	217,521	2,741	1.3%
2000	70,489	409	0.6%	77,370	449	0.6%	97,489	585	0.6%	245,349	1,443	0.6%
2001	88,780	3,924	4.4%	79,044	356	0.5%	96,142	577	0.6%	263,966	4,857	1.8%
2002	94,831	4,922	5.2%	93,647	1,283	1.4%	97,280	1,663	1.7%	285,757	7,868	2.8%
2003	79,527	445	0.6%	84,178	1,178	1.4%	97,540	1,863	1.9%	261,245	3,487	1.3%
2004	79,041	2,071	2.6%	101,045	1,354	1.3%	105,627	1,584	1.5%	285,713	5,009	1.8%
2005	85,113	1,847	2.2%	79,468	580	0.7%	88,108	696	0.8%	252,688	3,123	1.2%
2006	86,757	1,258	1.5%	84,378	793	0.9%	85,883	876	1.0%	257,018	2,927	1.1%
2007	81,659	1,356	1.7%	82,103	1,002	1.2%	83,333	825	1.0%	247,095	3,182	1.3%
2008	81,061	1,775	2.2%	84,479	1,064	1.3%	86,558	2,424	2.8%	252,098	5,263	2.1%
2009	101,130	1,891	1.9%	80,893	388	0.5%	100,088	721	0.7%	282,112	3,000	1.1%
2010	107,915	1,802	1.7%	73,303	586	0.8%	99,203	684	0.7%	280,420	3,073	1.1%
2011	86,413	1,141	1.3%	78,110	547	0.7%	98,423	650	0.7%	262,946	2,337	0.9%
2012	102,203	797	0.8%	84,500	532	0.6%	88,560	903	1.0%	275,263	2,233	0.8%
2013	99,455	865	0.9%	66,917	1,305	2.0%	78,955	1,642	2.1%	245,327	3,812	1.6%
2014	87,621	631	0.7%	76,641	1,226	1.6%	101,660	1,301	1.3%	265,922	3,158	1.2%
2015	91,973	514	0.6%	74,673	1,298	1.7%	106,162	1,817	1.7%	272,808	3,629	1.3%
2016	80,933	801	1.0%	64,364	1,313	2.0%	93,983	2,162	2.3%	239,280	4,276	1.8%
2017	99,401	914	0.9%	58,126	1,517	2.6%	86,227	2,621	3.0%	243,754	5,053	2.1%
2018	86,447	813	0.9%	68,911	2,109	3.1%	97,727	3,108	3.2%	253,085	6,029	2.4%
2019	90,658	1,052	1.2%	69,425	2,728	3.9%	106,279	3,922	3.7%	266,362	7,702	2.9%
2020	78,311	1,151	1.5%	58,559	1,341	2.3%	75,025	2,386	3.2%	211,895	4,878	2.3%
2021	66,475	831	1.3%	49,511	1,050	2.1%	71,847	1,839	2.6%	187,833	3,720	2.0%
Average	84,262	2,289	2.7%	75,507	1,247	1.7%	91,203	1,840	2.0%	250,972	5,376	2.1%

Table 17. Estimated Discards (tonnes) by purse seiners in tropical waters of the WCPFC Statistical Area, excluding the domestic fisheries of Indonesia and the Philippines

YEAR	SKIPJACK			YELLOWFIN			BIGEYE			TOTAL		
	Retained + Discarded	Discarded	%	Retained + Discarded	Discarded	%	Retained + Discarded	Discarded	%	Retained + Discarded	Discarded	%
1995	525,784	12,461	2.4%	217,592	2,285	1.1%	32,219	425	1.3%	775,596	15,171	2.0%
1996	546,000	18,455	3.4%	168,451	2,089	1.2%	34,605	914	2.6%	749,055	21,457	2.9%
1997	452,430	13,482	3.0%	252,629	1,945	0.8%	52,444	745	1.4%	757,503	16,172	2.1%
1998	673,172	21,474	3.2%	296,067	5,536	1.9%	53,194	745	1.4%	1,022,434	27,755	2.7%
1999	578,292	19,431	3.4%	238,951	4,827	2.0%	78,270	2,027	2.6%	895,512	26,285	2.9%
2000	675,478	32,828	4.9%	229,747	2,412	1.1%	59,712	1,899	3.2%	964,937	37,139	3.8%
2001	661,614	36,190	5.5%	249,599	2,022	0.8%	47,964	1,223	2.6%	959,177	39,435	4.1%
2002	821,526	41,323	5.0%	233,375	2,684	1.2%	56,462	819	1.5%	1,111,363	44,825	4.0%
2003	713,682	24,979	3.5%	275,996	4,802	1.7%	48,870	699	1.4%	1,038,548	30,480	2.9%
2004	790,202	35,006	4.4%	274,659	8,707	3.2%	64,643	2,023	3.1%	1,129,504	45,736	4.0%
2005	898,703	40,891	4.6%	300,839	6,618	2.2%	63,439	2,639	4.2%	1,262,981	50,149	4.0%
2006	927,846	21,340	2.3%	283,646	4,652	1.6%	59,447	904	1.5%	1,270,939	26,896	2.1%
2007	1,063,999	31,175	2.9%	286,590	3,382	1.2%	65,725	1,091	1.7%	1,416,313	35,648	2.5%
2008	1,009,261	20,084	2.0%	362,668	4,425	1.2%	70,641	1,695	2.4%	1,442,571	26,204	1.8%
2009	1,209,822	27,342	2.3%	293,218	4,750	1.6%	75,124	2,156	2.9%	1,578,164	34,248	2.2%
2010	1,130,530	14,923	1.3%	332,165	3,421	1.0%	59,008	832	1.4%	1,521,703	19,176	1.3%
2011	1,061,850	11,574	1.1%	293,296	2,346	0.8%	83,270	1,107	1.3%	1,438,416	15,028	1.0%
2012	1,247,358	19,334	1.6%	358,729	3,910	1.1%	72,602	1,024	1.4%	1,678,689	24,268	1.4%
2013	1,248,849	34,531	2.8%	321,527	5,492	1.7%	79,597	1,670	2.1%	1,649,973	41,692	2.5%
2014	1,447,800	63,023	4.4%	343,482	7,787	2.3%	76,901	2,092	2.7%	1,868,183	72,901	3.9%
2015	1,288,571	39,817	3.1%	292,567	6,788	2.3%	56,323	1,797	3.2%	1,637,460	48,401	3.0%
2016	1,233,169	36,255	2.9%	352,597	5,430	1.5%	69,493	1,918	2.8%	1,655,259	43,603	2.6%
2017	1,073,065	12,555	1.2%	384,499	3,576	0.9%	61,916	1,114	1.8%	1,519,481	17,245	1.1%
2018	1,333,115	12,931	1.0%	319,845	2,335	0.7%	71,210	762	1.1%	1,724,169	16,028	0.9%
2019	1,506,761	10,999	0.7%	297,128	1,783	0.6%	46,599	331	0.7%	1,850,488	13,113	0.7%
2020	1,253,774	10,908	0.9%	340,173	3,062	0.9%	69,036	573	0.8%	1,662,982	14,542	0.9%
2021	1,099,508	1,979	0.2%	341,066	443	0.1%	71,244	0	0.0%	1,511,818	2,422	0.2%
Average	980,450	24,640	2.5%	294,115	3,982	1.4%	62,221	1,230	2.0%	1,336,786	29,853	2.2%

Table 18. Commercial catches of billfish in the WCPFC Statistical Area, by gear type and species

YEAR	LONGLINE					PURSESEINE			YEAR	OTHER COMMERCIAL GEARS					TOTAL
	BLUE MARLIN	BLACK MARLIN	STRIPED MARLIN	SWORD-FISH	SUB-TOTAL	BLUE MARLIN	BLACK MARLIN	SUB-TOTAL		BLUE MARLIN	BLACK MARLIN	STRIPED MARLIN	SWORD-FISH	SUB-TOTAL	
1962	14,197	2,091	15,207	10,354	41,849	0	0	0	1962	84	24	0	38	146	41,995
1963	11,583	2,100	12,384	9,741	35,808	0	0	0	1963	89	26	0	41	156	35,964
1964	10,240	1,697	17,023	5,942	34,902	0	0	0	1964	133	27	2,366	1,203	3,729	38,631
1965	8,303	2,260	13,298	8,176	32,037	0	0	0	1965	165	29	2,790	2,118	5,102	37,139
1966	8,763	2,408	9,648	9,821	30,640	0	0	0	1966	194	30	1,676	1,934	3,834	34,474
1967	7,287	2,362	11,506	10,643	31,798	0	0	0	1967	241	32	1,641	1,161	3,075	34,873
1968	6,673	2,951	11,783	9,504	30,911	0	1	1	1968	196	34	1,255	1,883	3,368	34,280
1969	7,091	2,619	8,500	8,945	27,155	0	1	1	1969	334	36	2,625	1,673	4,668	31,824
1970	9,977	3,544	7,594	7,578	28,693	6	14	20	1970	201	50	1,184	1,895	3,330	32,043
1971	6,450	3,776	6,373	8,615	25,214	8	19	27	1971	219	56	2,284	617	3,176	28,417
1972	7,957	3,696	5,194	8,110	24,957	9	20	29	1972	237	59	1,369	436	2,101	27,087
1973	7,483	3,793	5,550	7,303	24,129	14	31	45	1973	584	69	4,011	972	5,636	29,810
1974	7,253	3,115	4,788	7,990	23,146	7	17	24	1974	572	80	3,930	1,789	6,371	29,541
1975	7,079	3,281	3,764	8,519	22,643	7	17	24	1975	1,265	82	7,255	3,072	11,674	34,341
1976	6,710	2,242	3,497	9,955	22,404	6	16	22	1976	1,311	71	4,163	4,138	9,683	32,109
1977	7,020	2,427	2,948	9,583	21,978	9	21	30	1977	1,608	96	4,980	2,802	9,486	31,494
1978	8,861	2,787	3,744	9,871	25,263	8	20	28	1978	1,644	67	6,035	2,855	10,601	35,892
1979	9,414	2,395	5,059	11,178	28,046	13	29	42	1979	1,168	81	3,058	1,368	5,675	33,763
1980	10,245	1,552	4,823	8,740	25,360	13	29	42	1980	1,333	72	4,008	2,308	7,721	33,123
1981	10,332	2,009	4,773	10,111	27,225	30	60	90	1981	1,709	80	4,410	2,201	8,400	35,715
1982	10,398	2,023	4,536	9,214	26,171	42	90	132	1982	1,560	69	2,997	1,643	6,269	32,572
1983	9,005	1,741	3,476	10,108	24,330	67	132	199	1983	1,696	78	2,667	1,386	5,827	30,356
1984	12,197	1,317	4,836	9,975	28,325	86	161	247	1984	1,099	101	3,060	1,420	5,680	34,252
1985	9,667	1,048	5,509	12,415	28,639	69	137	206	1985	1,414	130	3,116	1,540	6,200	35,045
1986	10,348	1,121	6,175	11,473	29,117	66	128	194	1986	1,201	139	4,181	1,633	7,154	36,465
1987	14,403	1,533	5,558	12,930	34,424	73	145	218	1987	1,088	100	2,399	1,317	4,904	39,546
1988	14,553	2,294	7,613	12,804	37,264	71	142	213	1988	1,228	108	2,880	1,552	5,768	43,245
1989	11,893	1,207	6,646	10,695	30,441	86	169	255	1989	1,313	116	2,211	2,115	5,755	36,451
1990	10,200	1,120	4,871	11,470	27,661	95	184	279	1990	1,375	166	2,489	1,388	5,418	33,358
1991	10,842	1,449	5,237	12,713	30,241	135	253	388	1991	1,270	180	1,839	883	4,172	34,801
1992	13,302	1,650	5,363	18,322	38,637	141	241	382	1992	1,146	131	1,515	1,393	4,185	43,204
1993	15,854	1,428	10,600	19,637	47,519	142	246	388	1993	1,112	127	1,267	747	3,253	51,160
1994	15,609	1,844	6,189	17,057	40,699	141	239	380	1994	1,423	140	1,824	924	4,311	45,390
1995	18,044	1,335	7,189	15,714	42,282	144	242	386	1995	1,491	158	1,248	1,203	4,100	46,768
1996	14,526	945	5,834	15,177	36,482	160	263	423	1996	1,921	166	912	1,260	4,259	41,164
1997	12,544	964	5,010	18,175	36,693	179	270	449	1997	1,759	155	1,017	830	3,761	40,903
1998	16,449	1,545	7,080	19,299	44,373	182	267	449	1998	1,871	178	1,421	1,082	4,552	49,374
1999	14,573	1,927	5,882	20,539	42,921	153	235	388	1999	1,897	184	1,340	1,256	4,677	47,986
2000	13,797	1,296	4,269	21,215	40,577	184	273	457	2000	1,042	137	1,380	1,404	3,963	44,997
2001	15,583	1,498	4,781	18,291	40,153	189	257	446	2001	1,117	129	1,370	1,050	3,666	44,265
2002	15,527	1,795	4,375	18,889	40,586	205	278	483	2002	1,085	142	1,587	1,452	4,266	45,335
2003	24,193	2,031	5,364	20,236	51,824	214	283	497	2003	1,138	177	1,261	1,440	4,016	56,337
2004	21,847	2,293	4,955	22,065	51,160	226	293	519	2004	1,147	185	1,466	1,383	4,181	55,860
2005	20,126	2,734	4,539	20,518	47,917	848	628	1,476	2005	1,203	185	1,334	1,542	4,264	53,657
2006	17,850	2,430	4,218	23,382	47,880	611	399	1,010	2006	1,182	206	1,308	1,447	4,143	53,033
2007	15,035	1,773	3,419	25,553	45,780	824	268	1,092	2007	1,318	236	1,083	1,389	4,026	50,898
2008	15,011	1,771	3,645	22,531	42,958	592	442	1,034	2008	1,298	224	1,446	1,227	4,195	48,187
2009	14,916	1,972	2,830	19,765	39,483	579	344	923	2009	1,041	145	974	1,211	3,371	43,777
2010	15,904	2,104	3,025	17,382	38,415	644	661	1,305	2010	1,390	180	1,042	856	3,468	43,188
2011	14,913	1,739	3,692	18,173	38,517	752	429	1,181	2011	1,350	173	492	461	2,476	42,174
2012	14,539	1,563	3,766	19,983	39,851	918	367	1,285	2012	1,815	232	741	1,886	4,674	45,810
2013	15,835	1,682	3,442	18,690	39,649	946	529	1,475	2013	1,961	228	469	2,897	5,555	46,679
2014	16,913	2,050	3,696	18,091	40,750	869	424	1,293	2014	2,430	371	277	2,612	5,690	47,735
2015	16,111	2,282	4,000	18,888	41,281	1,218	350	1,568	2015	2,246	310	447	2,807	5,810	48,701
2016	14,920	1,233	2,773	17,685	36,611	935	382	1,317	2016	4,749	262	714	3,750	9,475	47,494
2017	12,622	927	2,675	16,515	32,739	559	379	938	2017	2,567	405	403	1,994	5,369	39,097
2018	11,753	948	2,520	17,080	32,301	719	404	1,123	2018	2,692	435	459	2,117	5,703	39,184
2019	12,017	1,002	3,158	14,439	30,616	590	385	975	2019	2,677	415	460	2,116	5,668	37,333
2020	8,173	902	3,063	13,543	25,681	609	334	943	2020	3,793	1,309	438	1,272	6,812	33,469
2021	7,015	727	3,091	12,863	23,696	265	1,250	1,515	2021	3,808	1,314	436	1,271	6,829	32,171

Table 19. Commercial catches of billfish in the WCPFC Statistical Area, by species

YEAR	BLUE MARLIN		BLACK MARLIN		STRIPED MARLIN		SWORDFISH		TOTAL
	TONNES	%	TONNES	%	TONNES	%	TONNES	%	
1962	14,281	34	2,115	5	15,207	36	10,392	25	41,995
1963	11,672	32	2,126	6	12,384	34	9,782	27	35,964
1964	10,373	27	1,724	4	19,389	50	7,145	18	38,631
1965	8,468	23	2,289	6	16,088	43	10,294	28	37,139
1966	8,957	26	2,438	7	11,324	33	11,755	34	34,474
1967	7,528	22	2,394	7	13,147	38	11,804	34	34,873
1968	6,869	20	2,986	9	13,038	38	11,387	33	34,280
1969	7,425	23	2,656	8	11,125	35	10,618	33	31,824
1970	10,184	32	3,608	11	8,778	27	9,473	30	32,043
1971	6,677	23	3,851	14	8,657	30	9,232	32	28,417
1972	8,203	30	3,775	14	6,563	24	8,546	32	27,087
1973	8,081	27	3,893	13	9,561	32	8,275	28	29,810
1974	7,832	27	3,212	11	8,718	30	9,779	33	29,541
1975	8,351	24	3,380	10	11,019	32	11,591	34	34,341
1976	8,027	25	2,329	7	7,660	24	14,093	44	32,109
1977	8,637	27	2,544	8	7,928	25	12,385	39	31,494
1978	10,513	29	2,874	8	9,779	27	12,726	35	35,892
1979	10,595	31	2,505	7	8,117	24	12,546	37	33,763
1980	11,591	35	1,653	5	8,831	27	11,048	33	33,123
1981	12,071	34	2,149	6	9,183	26	12,312	34	35,715
1982	12,000	37	2,182	7	7,533	23	10,857	33	32,572
1983	10,768	35	1,951	6	6,143	20	11,494	38	30,356
1984	13,382	39	1,579	5	7,896	23	11,395	33	34,252
1985	11,150	32	1,315	4	8,625	25	13,955	40	35,045
1986	11,615	32	1,388	4	10,356	28	13,106	36	36,465
1987	15,564	39	1,778	4	7,957	20	14,247	36	39,546
1988	15,852	37	2,544	6	10,493	24	14,356	33	43,245
1989	13,292	36	1,492	4	8,857	24	12,810	35	36,451
1990	11,670	35	1,470	4	7,360	22	12,858	39	33,358
1991	12,247	35	1,882	5	7,076	20	13,596	39	34,801
1992	14,589	34	2,022	5	6,878	16	19,715	46	43,204
1993	17,108	33	1,801	4	11,867	23	20,384	40	51,160
1994	17,173	38	2,223	5	8,013	18	17,981	40	45,390
1995	19,679	42	1,735	4	8,437	18	16,917	36	46,768
1996	16,607	40	1,374	3	6,746	16	16,437	40	41,164
1997	14,482	35	1,389	3	6,027	15	19,005	46	40,903
1998	18,502	37	1,990	4	8,501	17	20,381	41	49,374
1999	16,623	35	2,346	5	7,222	15	21,795	45	47,986
2000	15,023	33	1,706	4	5,649	13	22,619	50	44,997
2001	16,889	38	1,884	4	6,151	14	19,341	44	44,265
2002	16,817	37	2,215	5	5,962	13	20,341	45	45,335
2003	25,545	45	2,491	4	6,625	12	21,676	38	56,337
2004	23,220	42	2,771	5	6,421	11	23,448	42	55,860
2005	22,177	41	3,547	7	5,873	11	22,060	41	53,657
2006	19,643	37	3,035	6	5,526	10	24,829	47	53,033
2007	17,177	34	2,277	4	4,502	9	26,942	53	50,898
2008	16,901	35	2,437	5	5,091	11	23,758	49	48,187
2009	16,536	38	2,461	6	3,804	9	20,976	48	43,777
2010	17,938	42	2,945	7	4,067	9	18,238	42	43,188
2011	17,015	40	2,341	6	4,184	10	18,634	44	42,174
2012	17,272	38	2,162	5	4,507	10	21,869	48	45,810
2013	18,742	40	2,439	5	3,911	8	21,587	46	46,679
2014	20,212	42	2,845	6	3,975	8	20,703	43	47,735
2015	19,575	40	2,942	6	4,469	9	21,715	45	48,701
2016	20,604	43	1,877	4	3,538	7	21,475	45	47,494
2017	15,748	40	1,711	4	3,118	8	18,520	47	39,097
2018	15,164	39	1,787	5	3,022	8	19,211	49	39,184
2019	15,284	41	1,802	5	3,651	10	16,596	44	37,333
2020	12,575	38	2,545	8	3,522	11	14,827	44	33,469
2021	11,088	34	3,291	10	3,544	11	14,251	44	32,174

Table 20. Commercial catches of albacore tuna, striped marlin and swordfish in the WCPFC Statistical Area north of the equator

YEAR	ALBACORE		STRIPED MARLIN		SWORDFISH		TOTAL
	TONNES	%	TONNES	%	TONNES	%	
1962	21,839	50	12,165	28	9,857	22	43,861
1963	36,848	66	9,550	17	9,029	16	55,427
1964	37,487	60	17,911	29	6,741	11	62,139
1965	52,169	69	14,193	19	9,377	12	75,739
1966	43,328	69	9,097	14	10,676	17	63,101
1967	54,006	70	11,799	15	10,920	14	76,725
1968	36,868	63	11,900	20	10,083	17	58,851
1969	48,082	71	10,104	15	9,694	14	67,880
1970	40,915	72	7,571	13	8,517	15	57,003
1971	66,521	83	6,562	8	7,289	9	80,372
1972	76,208	87	4,550	5	6,606	8	87,364
1973	85,831	86	7,496	7	6,769	7	100,096
1974	87,885	86	7,044	7	7,816	8	102,745
1975	65,407	76	9,788	11	10,406	12	85,601
1976	104,798	85	6,222	5	11,904	10	122,924
1977	49,471	73	7,021	10	11,643	17	68,135
1978	79,431	80	8,399	8	11,853	12	99,683
1979	60,913	78	6,605	8	11,011	14	78,529
1980	64,522	79	7,702	9	9,326	11	81,550
1981	55,756	76	7,200	10	10,047	14	73,003
1982	59,670	81	5,315	7	8,625	12	73,610
1983	41,879	74	4,948	9	10,133	18	56,960
1984	52,154	76	6,491	9	9,776	14	68,421
1985	49,033	72	7,312	11	11,990	18	68,335
1986	39,769	66	9,294	15	11,168	19	60,231
1987	44,163	70	6,629	11	11,903	19	62,695
1988	39,392	67	8,659	15	10,697	18	58,748
1989	40,921	71	6,510	11	10,262	18	57,693
1990	49,295	75	5,797	9	10,267	16	65,359
1991	33,196	66	5,742	11	11,105	22	50,043
1992	48,101	69	5,486	8	15,770	23	69,357
1993	46,074	62	10,364	14	17,600	24	74,038
1994	57,705	74	6,025	8	14,760	19	78,490
1995	57,990	74	6,550	8	13,960	18	78,500
1996	59,379	77	5,059	7	12,522	16	76,960
1997	76,780	81	4,329	5	13,694	14	94,803
1998	64,526	77	5,674	7	14,070	17	84,270
1999	98,972	83	4,933	4	15,014	13	118,919
2000	60,908	75	3,998	5	16,166	20	81,072
2001	62,278	78	4,280	5	12,932	16	79,490
2002	79,781	82	3,718	4	13,255	14	96,754
2003	65,021	78	4,025	5	14,285	17	83,331
2004	67,759	78	4,023	5	14,583	17	86,365
2005	47,785	73	3,714	6	14,178	22	65,677
2006	46,374	72	3,369	5	14,738	23	64,481
2007	71,873	80	2,682	3	15,551	17	90,106
2008	47,234	74	3,209	5	13,036	21	63,479
2009	60,546	81	2,121	3	12,156	16	74,823
2010	48,238	78	2,486	4	11,069	18	61,793
2011	56,981	82	2,488	4	9,641	14	69,110
2012	68,742	83	2,901	3	11,612	14	83,255
2013	63,515	82	2,536	3	11,127	14	77,178
2014	58,162	82	2,389	3	10,603	15	71,154
2015	52,968	78	2,914	4	12,380	18	68,262
2016	40,221	73	2,288	4	12,458	23	54,967
2017	48,231	78	2,100	3	11,506	19	61,837
2018	42,408	75	2,028	4	12,145	21	56,581
2019	45,218	77	2,596	4	10,914	19	58,728
2020	29,377	72	2,371	6	8,857	22	40,605
2021	31,871	73	2,285	5	9,372	22	43,528

Table 21. Commercial catches of albacore tuna, striped marlin and swordfish in the WCPFC Statistical Area south of the equator

YEAR	ALBACORE		STRIPED MARLIN		SWORDFISH		TOTAL
	TONNES	%	TONNES	%	TONNES	%	
1962	24,492	87	3,042	11	535	2	28,069
1963	16,827	82	2,834	14	753	4	20,414
1964	13,058	87	1,473	10	397	3	14,928
1965	18,057	87	1,890	9	914	4	20,861
1966	31,786	91	2,139	6	1,044	3	34,969
1967	35,297	94	1,345	4	884	2	37,526
1968	27,346	92	1,135	4	1,304	4	29,785
1969	24,024	93	1,018	4	924	4	25,966
1970	33,435	94	1,204	3	956	3	35,595
1971	34,216	89	2,085	5	1,942	5	38,243
1972	33,447	89	2,013	5	1,940	5	37,400
1973	45,318	93	2,065	4	1,506	3	48,889
1974	27,277	88	1,674	5	1,963	6	30,914
1975	19,244	89	1,230	6	1,185	5	21,659
1976	28,149	89	1,438	5	2,189	7	31,776
1977	33,700	95	906	3	741	2	35,347
1978	31,730	93	1,380	4	873	3	33,983
1979	25,094	89	1,512	5	1,535	5	28,141
1980	30,640	91	1,129	3	1,722	5	33,491
1981	32,355	88	1,983	5	2,265	6	36,603
1982	29,939	87	2,219	6	2,232	6	34,390
1983	24,342	90	1,195	4	1,361	5	26,898
1984	22,903	88	1,406	5	1,619	6	25,928
1985	28,603	90	1,313	4	1,966	6	31,882
1986	32,714	92	1,060	3	1,938	5	35,712
1987	22,814	86	1,328	5	2,344	9	26,486
1988	36,961	87	1,833	4	3,655	9	42,449
1989	47,990	91	2,344	4	2,548	5	52,882
1990	32,194	89	1,535	4	2,543	7	36,272
1991	29,376	89	1,288	4	2,417	7	33,081
1992	34,488	87	1,305	3	3,898	10	39,691
1993	31,422	88	1,503	4	2,783	8	35,708
1994	38,756	88	1,988	5	3,230	7	43,974
1995	33,760	87	1,886	5	2,958	8	38,604
1996	31,761	85	1,687	5	3,915	10	37,363
1997	36,121	84	1,698	4	5,311	12	43,130
1998	47,939	84	2,766	5	6,311	11	57,016
1999	32,094	78	2,288	6	6,781	16	41,163
2000	40,763	83	1,602	3	6,453	13	48,818
2001	59,283	88	1,820	3	6,408	9	67,511
2002	68,272	88	2,209	3	7,076	9	77,557
2003	58,217	85	2,643	4	7,324	11	68,184
2004	54,640	83	2,562	4	8,710	13	65,912
2005	57,497	87	1,884	3	7,076	11	66,457
2006	58,883	85	1,810	3	8,967	13	69,660
2007	54,911	82	1,746	3	10,688	16	67,345
2008	57,874	82	1,928	3	10,508	15	70,310
2009	75,076	88	1,868	2	8,348	10	85,292
2010	80,986	90	1,599	2	7,630	8	90,215
2011	58,718	84	1,723	2	9,386	13	69,827
2012	75,050	85	1,768	2	11,138	13	87,956
2013	75,591	86	1,388	2	10,454	12	87,433
2014	64,171	84	1,627	2	10,272	14	76,070
2015	64,978	86	1,620	2	9,342	12	75,940
2016	61,044	86	1,260	2	8,580	12	70,884
2017	78,316	90	1,186	1	7,450	9	86,952
2018	68,503	89	1,043	1	7,321	10	76,867
2019	70,515	91	1,053	1	5,854	8	77,422
2020	64,862	91	1,107	2	5,516	8	71,485
2021	49,273	88	1,172	2	5,859	10	56,304

Table 22. Commercial catches of albacore tuna, striped marlin and swordfish in the South Pacific Ocean

YEAR	ALBACORE		STRIPED MARLIN		SWORDFISH		TOTAL
	TONNES	%	TONNES	%	TONNES	%	
1962	35,219	100	0	0	0	0	35,219
1963	31,111	100	0	0	0	0	31,111
1964	22,824	100	3	0	3	0	22,830
1965	25,455	100	4	0	3	0	25,462
1966	38,661	100	86	0	35	0	38,782
1967	43,957	99	191	0	50	0	44,198
1968	32,382	99	229	1	106	0	32,717
1969	24,805	99	106	0	31	0	24,942
1970	34,925	99	261	1	40	0	35,226
1971	38,630	83	5,237	11	2,451	5	46,318
1972	39,521	85	4,307	9	2,604	6	46,432
1973	47,330	89	3,395	6	2,727	5	53,452
1974	34,049	86	3,042	8	2,556	6	39,647
1975	23,600	84	2,629	9	1,935	7	28,164
1976	29,082	80	3,919	11	3,398	9	36,399
1977	38,740	88	2,797	6	2,305	5	43,842
1978	34,676	86	2,827	7	2,670	7	40,173
1979	27,076	80	3,966	12	2,636	8	33,678
1980	32,541	83	3,533	9	3,322	8	39,396
1981	34,784	80	4,843	11	3,632	8	43,259
1982	30,788	79	4,719	12	3,312	9	38,819
1983	25,092	81	3,153	10	2,766	9	31,011
1984	24,704	83	2,447	8	2,641	9	29,792
1985	32,328	87	2,235	6	2,642	7	37,205
1986	36,590	86	2,722	6	3,293	8	42,605
1987	25,052	75	4,170	13	4,132	12	33,354
1988	37,867	80	3,657	8	5,717	12	47,241
1989	49,076	87	3,985	7	3,627	6	56,688
1990	36,062	81	3,903	9	4,736	11	44,701
1991	35,600	81	3,349	8	4,854	11	43,803
1992	38,668	79	3,202	7	7,186	15	49,056
1993	35,438	80	3,461	8	5,135	12	44,034
1994	42,318	82	4,097	8	5,442	10	51,857
1995	38,475	83	3,305	7	4,781	10	46,561
1996	34,402	79	3,536	8	5,618	13	43,556
1997	39,490	77	3,999	8	7,631	15	51,120
1998	50,575	79	4,511	7	8,623	14	63,709
1999	39,674	78	3,047	6	7,965	16	50,686
2000	48,461	82	2,288	4	8,186	14	58,935
2001	63,690	83	2,851	4	10,535	14	77,076
2002	75,274	79	4,090	4	15,375	16	94,739
2003	64,137	79	4,095	5	12,726	16	80,958
2004	63,514	75	3,495	4	17,894	21	84,903
2005	64,754	79	2,887	4	14,787	18	82,428
2006	65,439	76	2,697	3	17,453	20	85,589
2007	59,370	75	2,346	3	16,924	22	78,640
2008	63,503	77	2,415	3	17,069	21	82,987
2009	84,414	80	2,289	2	18,842	18	105,545
2010	90,849	81	2,138	2	19,706	17	112,693
2011	66,465	73	2,747	3	21,456	24	90,668
2012	89,884	77	2,719	2	23,824	20	116,427
2013	87,982	78	2,380	2	21,984	20	112,346
2014	82,842	77	2,346	2	22,620	21	107,808
2015	83,609	76	2,115	2	24,070	22	109,794
2016	72,512	75	1,813	2	22,748	23	97,073
2017	94,504	80	1,666	1	22,027	19	118,197
2018	83,359	79	1,595	2	21,128	20	106,082
2019	86,083	81	1,655	2	18,167	17	105,905
2020	71,674	78	1,813	2	18,759	20	92,246
2021	52,173	74	1,467	2	16,624	24	70,264