



TECHNICAL AND COMPLIANCE COMMITTEE
Eighteenth Regular Session: Electronic Meeting
27 September – 3 October 2022

**ANNUAL REPORT ON THE EASTERN HIGH SEAS POCKET SPECIAL
MANAGEMENT AREA (EHSP-SMA)**

WCPFC-TCC18-2022-RP06
15 September 2022

Paper prepared by the Secretariat

Purpose

1. This paper provides the annual summary report on activities in the EHSP-SMA Special Management Area (EHSP-SMA) based on data held by the Secretariat.¹
2. The EHSP-SMA is the area of high seas bounded by the Exclusive Economic Zones (EEZ) of the Cook Islands to the west, French Polynesia to the east and Kiribati to the north.

Introduction

3. Vessels detected in the EHSP-SMA through the Vessel Monitoring System (VMS) are

E-HSP Live List

The table provides a 'live list' of all fishing vessels present in the E-HSP based on near-real time VMS information, in accordance with paragraph 5 of CMM 2010-02. The map displays the most recent position provided in the live list. Position reports are received every six (6) hours and are available for the previous two days. The live list and the map provides a hyperlink to the relevant vessel record in the RFV. Please provide any comments and feedback to the email address EasternHighSeasSpecialManagementArea@wcpfc.int



displayed in a table as well as on a map in the EHSP-SMA page on the WCPFC website. The Secretariat maintains a 'live list' of all fishing vessels in the EHSP-SMA in the secure page on the WCPFC website²

(<https://www.wcpfc.int/eastern-high-seas-pocket>).

4. A sample screen shot of the 'live list' is shown here (refer **Figure 1: E-HSP Live List** left). CCMs can log into the EHSP-SMA secure page to view the latest data.

¹ The management and reporting arrangements for the EHSP were established through CMM 2010-02 entitled *Conservation and Management Measures for the Eastern High Seas Pocket Special Management Area* which was updated by CMM 2016-02 with effect from 7 February 2017.

² *CMM 2016-02 paragraph 5*

5. Vessels shown in the live list are also directly linked to the WCPFC Record of Fishing Vessels (RFV), providing users with the ability to easily access individual vessel details.

Review of available data relevant to CMM 2016-02 and CMM 2010-02

Vessel Sightings

6. Paragraph 2 of CMM 2016-02 encourages reporting of any fishing vessel sightings in the EHSP-SMA to the WCPFC Secretariat. During the reporting period, the Secretariat did not receive any sighting reports from flag CCMs.³

Vessels in the EHSP-SMA and VMS

7. **Tables 1 a.** and **b.** below summarise the number of vessels by gear type and by flag respectively, that reported entry/exit alerts for the EHSP-SMA through the WCPFC VMS for each month of 2021 to July 2022. **Tables 2a.** and **b.** provide comparative information for 2020 to July 2021.

8. The figures indicate the primary activity in the EHSP-SMA is longline vessels mainly between February to October in 2020 and February to September 2021; activity is markedly reduced in December and January. In 2019, the primary period for fishing was March to October with more vessels than in 2020 and 2021 (331) (refer **WCPFC-TCC16-2020-RP06** page 2). The number of vessels operating on a month-by-month basis in 2021/2022 was 64% of the level in 2020/2021, a similar trend as seen with fewer vessels overall operating in the WCPO and reflected in the number of active vessels in the RFV⁴.

³ To assist with internal record keeping at the WCPFC Secretariat, copies of vessel sighting reports required in accordance with paragraph 2 of CMM 2016-02 are to be submitted the Commission and can be sent to the Secretariat by email: EasternHighSeasSpecialManagementArea@wcpfc.int

⁴ Annual Report on the RFV **WCPFC-TCC18-2022-RP05**

Table 1 a: Number of vessels by Type and Month in EHSP-SMA-SMA by month for 2021 and between Jan and July 2022 (Source: WCPFC VMS data)

Vessel Type	2021												2022							total
	JAN	FEB	MAR	APR	MAY	JUN	JUL	AUG	SEP	OCT	NOV	DEC	JAN	FEB	MAR	APR	MAY	JUN	JUL	
BUNKER	1			1	1	1	2		1						1					8
FISH CARRIER	3																			3
Longliner	3	16	15	9	17	17	9	6	10	5	2	1		4	12	6	11	11	16	170
Pole and line																				0
Tuna purse seiner	1											1	2	1			1			6
Total	8	16	15	10	18	18	11	6	11	5	2	2	2	5	12	7	12	11	16	187

Table 1 b: Number of Vessels by CCM in EHSP-SMA-SMA for 2021 and between Jan-July 2022 (Source: WCPFC VMS data)

Flag CCM	2021												2022							total
	JAN	FEB	MAR	APR	MAY	JUN	JUL	AUG	SEP	OCT	NOV	DEC	JAN	FEB	MAR	APR	MAY	JUN	JUL	
China	3	8			3	3	1	1								4				23
Cook Islands	1					1	1		1						1	1				6
European Union	1												2							3
Panama	2			1	1		1													5
Chinese Taipei		8	15	9	14	14	8	5	10	5	2	1		4	11	6	7	11	14	144
United States	1											1		1						3
Vanuatu															1				2	3
Total	8	16	15	10	18	18	11	6	11	5	2	2	2	5	12	7	12	11	16	187

Table 2 a: Number of vessels by Type and Month in EHSP-SMA-SMA by month for 2020 and between Jan and July 2021 (Source: WCPFC VMS data)

Vessel Type	2020												2021							total
	JAN	FEB	MAR	APR	MAY	JUN	JUL	AUG	SEP	OCT	NOV	DEC	JAN	FEB	MAR	APR	MAY	JUN	JUL	
BUNKER	1				1		1	2	2				1			1	1	1	2	13
FISH CARRIER			1					1	1	1	1		3							8
Longliner	3	12	16	24	20	24	30	19	11	15	7		3	16	15		17	17	9	256
Pole and line				1								1								2
Tuna purse seiner									1			2	1			9				13
Total	4	12	17	25	21	24	31	22	15	16	8	3	8	16	15	10	18	18	11	292

Table 2 b: Number of Vessels by CCM in EHSP-SMA-SMA for 2020 and between Jan-July 2021 (Source: WCPFC VMS data)

Flag	2020												2021							
	JAN	FEB	MAR	APR	MAY	JUN	JUL	AUG	SEP	OCT	NOV	DEC	JAN	FEB	MAR	APR	MAY	JUN	JUL	total
China	1	5	11	4		5	3	4	3	3			3	8			3	3	1	57
Cook Islands	1						1						1					1	1	5
European Union - Netherlands													1							1
Nauru												1								1
Panama					1			3	2							1	1		1	9
Chinese Taipei	2	7	6	20	20	19	27	15	9	13	7			8	15	9	14	14	8	213
USA				1					1			2	1			1				6
	4	12	17	26	21	24	31	22	15	16	7	3	6	16	15	11	18	18	11	292

9. **Table 3** below summarises the numbers of entry and exit alerts generated by the Commission VMS for 2021/2022. **Annex 1 a. – c.** shows the entry and exit alerts for 2020/2021 and 2019/2020 as a comparison. There has been an improvement in the consistency of entry and exit reporting generated by the Commission VMS during the last two reporting years (RY2020 and 2021). The vessel numbers again indicate that fewer vessels were active in the EHSP-SMA in 2021/22.

Table 3: Summary of Entry and Exit Alert generated by the Commission VMS by flag from 1 January 2021 – 31 August 2022 (including transit reports)

CCM	# of Vessels detected		
	# of vessels detected on VMS	# Entry Alert	# Exit Alert
China	29 Longliners	30	30
Cook Islands	4 (3 Bunkers, 1 Purse seiner)	9	9
European Union – (Spain, NLD)	3 (2 Purse seiner, 1 Carrier)	3	3
Panama	3 (1 Bunker, 2 Carrier)	5	5
Chinese Taipei	57 Longliners	112	112
United States	4 Purse seiner	4	4
Vanuatu	3 Longliner	5	5
TOTAL	103	168	168

10. More detail on the vessels operating or transiting the EHSP-SMA is available in **Annex 2** which lists the 103 vessels (89 LL, 7 PS, 3 carriers and 4 bunkers) that were reporting to the WCPFC VMS from the EHSP-SMA during 1 January 2021 – 31 August 2022 by flag CCM.

Vessel activity in the EHSP-SMA: CCM activity

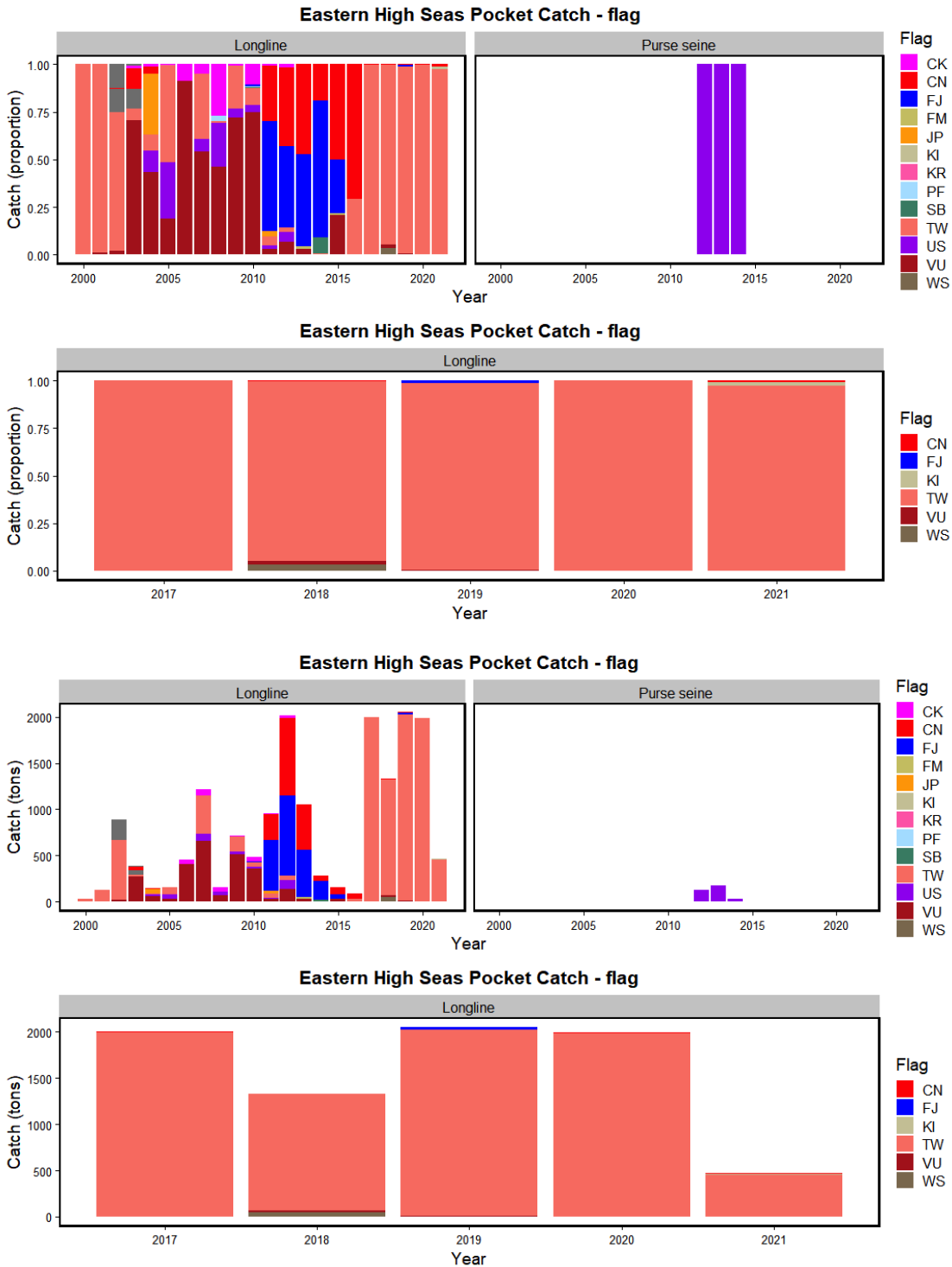
11. Data for the purse seine fishery shows activity by one flag CCM for the three years 2012-2014.

12. The historical flag CCM involvement in the EHSP-SMA longline fishery and their respective catches as reported in operational catch and effort data by CCMs have changed over time, most significantly between 2003 – 2016. CCM involvement altered significantly between 2003 to 2010 and particularly during the period between 2011-2015.

13. Over the last five years (2017-2021) CCM involvement and longline catches have become less variable as shown by the total annual catches and CCM catch proportions (refer **Figure 2⁵** below). Longline catch peaked in 2012 and again in 2017, 2019 and 2020 at around 2000 tons with catch levels significantly lower in other years.

⁵ Source : SPC data “Annual catch estimates by EEZ”

Figure 2: CCM proportion of catch and catches for EHSP-SMA LL and PS fleets 2000-2021⁶

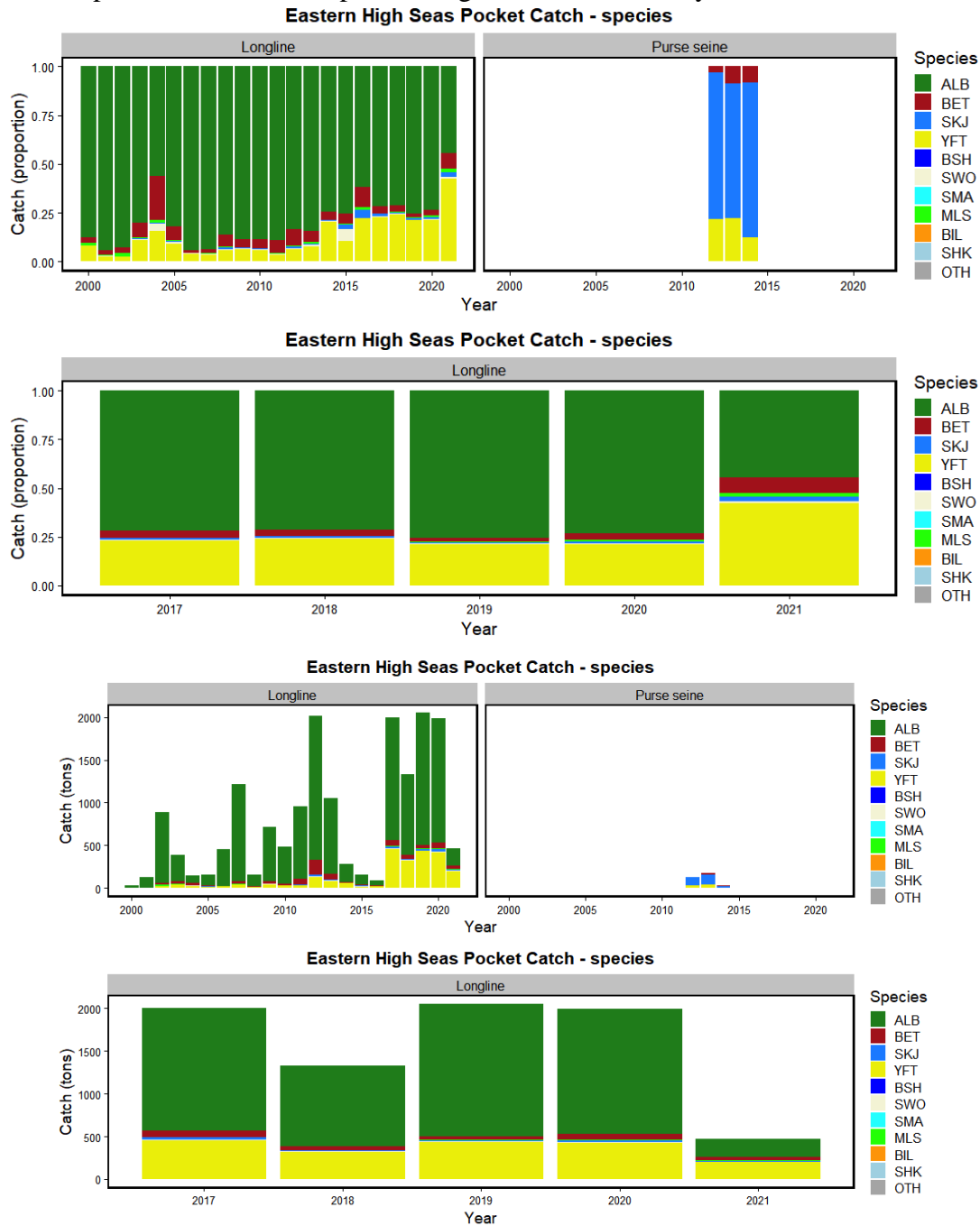


⁶ "There is a lag in the provision of complete 2021 aggregate data by time and area." *Overview of tuna fisheries in the Western and Central Pacific Ocean, Including Economic Conditions – 2021 WCPFC-SC18-2022/GN IP-1 1*

Vessel activity in the EHSP-SMA: Species caught

14. The main species taken from the EHSP-SMA by the longline fleet is albacore followed by yellowfin and bigeye tuna. Catch of the historical purse seine fleet was mainly skipjack with some yellowfin and bigeye. The mix catch proportions generally appear consistent with the catches overall in the eastern area of the WCPFC convention area.⁷ (refer **Figure 3**)

Figure 3: Proportion and catch of species caught in EHSP-SMA by LL and PS fleets 2000 - 2021⁸



⁷ Overview of tuna fisheries in the WCPO, Including Economic Conditions – 2021 WCPFC-SC18-2022/GN IP-1

⁸ Supra note 5

Transshipment

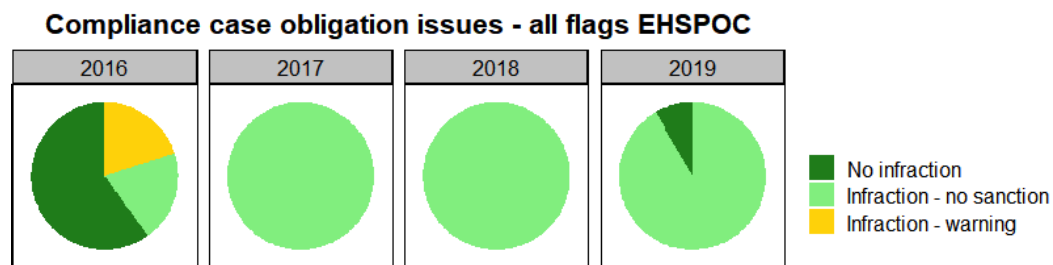
15. During the reporting period, there was no report of transshipments in the EHSP-SMA. CMM 2016-02 prohibited all transshipment activities in the EHSP-SMA from 1 January 2019.

Compliance history

16. During the reporting period, there were no findings of alleged infringement by vessels occurring in the EHSP-SMA from monitoring, control and surveillance activities such as high seas boarding and inspections or aerial surveillance activities that were reported to the Secretariat.

17. The outcomes of four historical cases for CMM 2010-02 02 (VMS entry and exit reporting) are shown in **Figure 4**. There are no cases under the replacement CMM 2016-02.

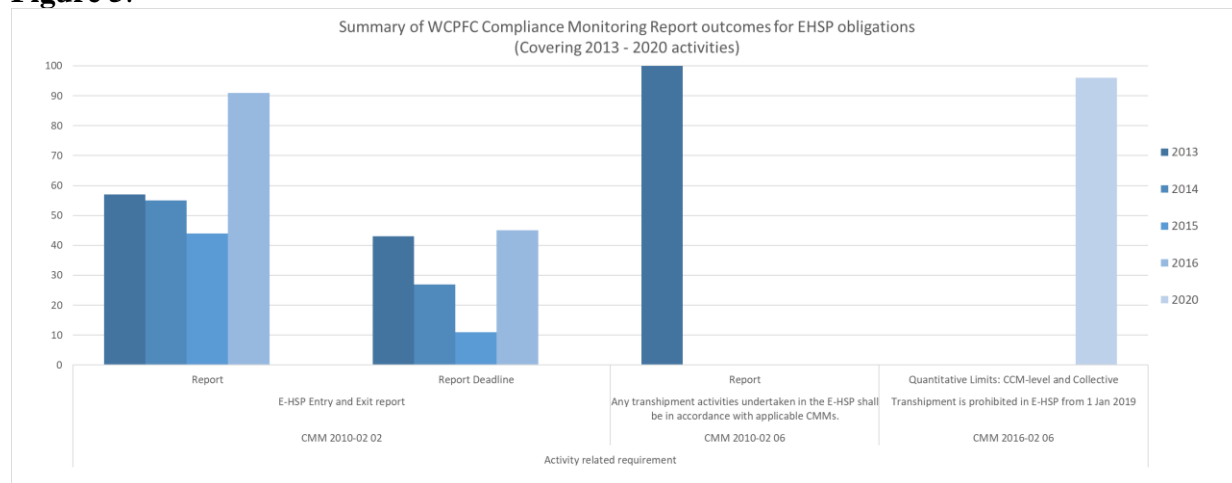
Figure 4: The outcomes of four compliance cases under CMM 2010-02 02



Review of CMMs 2010-02 and 2016-02 implementation by applicable CCMs under the Compliance Monitoring Scheme (CMS)

18. **Figure 5** below provides an overview of the result of the evaluation of CMMs 2010-02 and 2016-02 under the CMS over the years. CMM 2010-02 was evaluated annually between 2013 (for Reporting Year 2012) and 2016 (for Reporting Year 2015) and the replacement CMM 2016-02 was evaluated in 2020.

Figure 5:



19. **Figure 5** shows that during the period 2013 - 2016 there were ongoing implementation issues faced by applicable CCMs in meeting the required entry and exit manual reports under

CMM 2010-02 when vessels entered and exited the EHSP-SMA-SMA. Information in **Tables 2 and 3** (above) and **Annex 1** show an improvement in the level of implementation of the entry and exit reporting over the last three years.

20. It should be noted that CMM 2016-02 which applied since RY2017, no longer requires that flag CCMs ensure that their vessels submit entry/exit reports to the Commission at least 6 hours prior to entry/exit into the EHSP-SMA and that transshipments have been banned in the EHSP-SMA since 1 January 2019.

21. CMR outcomes are provided for those years when an evaluation of implementation was carried out: CMM 2010-02 in 2013-2016 and its replacement CMM 2016-02. Implementation of CMM 2016-02 paragraph 6 (prohibition on transshipment in the EHSP-SMA) was reported on in 2020. There one instance of non-compliance relating to where no report on implementation of the prohibition on transshipment in the EHSP-SMA was provided.

Recommendation

22. TCC18 is invited to note the report and discuss the activities in the EHSP-SMA.

Annex 1a: Summary of Entry and Exit Alert generated by the Commission VMS by flag from 1 January 2021 – 31 August 2022 (includes transit reports from 4 vessels)

CCM	# of Vessels detected		
	# of vessels detected on VMS	# Entry Alert	# Exit Alert
China	29 Longliners	30	30
Cook Islands	4 (3 Bunkers, 1 Purse seiner)	9	9
European Union – Spain, NLD	3 (2 Purse seiner, 1 Carrier)	3	3
Panama	3 (1 Bunker, 2 Carrier)	5	5
Chinese Taipei	57 Longliners	112	112
United States	4 Purse seiner	4	4
Vanuatu	3 Longliner	5	5
TOTAL	103	168	168

Annex 1b: Summary of Entry and Exit Alert generated by the Commission VMS by flag from 1 January 2020 – 31 July 2021

CCM	# of Vessels detected		
	# of vessels detected on VMS	# Entry Alert	# Exit Alert
China	46 (1 carrier, 45 LL)	57	57
Cook Islands	2 bunkers	6	6
European Union - Netherlands	1 Carrier	1	1
Nauru	1 Tuna Purse Seiner	1	1
Panama	6 (3 bunkers, 3 carrier)	10	10
Chinese Taipei	67 Longliners	147	148
United States	3 PS, 1 PL	5	5
TOTAL	130	227	228

Annex 1c: Summary of Entry and Exit Alert generated by the Commission VMS by flag from 1 January 2019 – 31 July 2020

CCM	# of Vessels detected		
	# of vessels detected on VMS	# Entry Alert	# Exit Alert
China	41 (2 carriers, 39 LL)	65	65
Cook Islands	4 bunkers	4	4
Fiji	1 LL	2	2
Liberia	1 carrier	1	1
Panama	8 (3 bunkers, 5 carrier)	6	6
Chinese Taipei	67 (1 carrier, 66 LL)	134	114
United States	2 PS, 1 PL	3	3
Vanuatu	6 (1 bunker, 5 LL)	7	7
TOTAL	130	222	202

Annex 2: List of 103 vessels (89 LL, 7 PS, 3 carriers & 4 bunkers) reporting to WCPFC VMS from the EHSP-SMA during 1 January 2021 – 31 August 2022 (includes transiting vessels)

Flag	ID	Name	Callsign	Vessel Type
China (29 Vessels)				
CHN	9874	HUA NAN YU 711	BZXD22	Longliner
CHN	10121	GUI YUAN YU 60006	BZWZ36	Longliner
CHN	10292	XIN SHI JI 201	BZ1VS	Longliner
CHN	10293	XIN SHI JI 202	BZ2VS	Longliner
CHN	10294	XIN SHI JI 203	BZ3VS	Longliner
CHN	10295	XIN SHI JI 205	BZ4VS	Longliner
CHN	10296	XIN SHI JI 206	BZ5VS	Longliner
CHN	10474	PINGTAIRONG50	BZ4VU	Longliner
CHN	10476	PINGTAIRONG55	BZ5VU	Longliner
CHN	10478	PINGTAIRONG58	BZ6VU	Longliner
CHN	10479	PINGTAIRONG60	BZ7VU	Longliner
CHN	10703	PINGTAIRONG318	BZW9O	Tuna longliner
CHN	11027	SUIYUANYU32	BZWA34	Longliner
CHN	11485	SHUNDA9	BZTM8	Longliner
CHN	11750	SUIYUANYU33	BZXE7	Longliner
CHN	11752	SUIYUANYU36	BZXE9	Longliner
CHN	11778	ZHONGYANG88	BZXE6	Longliner
CHN	11835	LU RONG YUAN YU 937	BZTI6	Longliner
CHN	11836	LU RONG YUAN YU 938	BZTI7	Longliner
CHN	11996	SUIYUANYU40	BZWA28	Longliner
CHN	63	SUI YUAN YU 28	BZWA28	Longliner
CHN	10549	PINGTAIRONG70	BZ1VV	Longliner
CHN	124	PINGTAIRONG301	BZW2P	Tuna longliner
CHN	12077	PINGTAIRONG131	BZW3P	Longliner
CHN	12078	PINGTAIRONG688	BZZQ4	Longliner
CHN	11891	YUANYOU516	BZU5Q	Longliner
CHN	10149	PINGTAIRONG19	BZ2VT	Longliner
CHN	9268	QINGYUANYU012	BZZQ3	Longliner
CHN	10547	PINGTAIRONG65	BZ8VU	Longliner
Cook Islands (4 vessels)				
COK	9458	HAI SOON 26	E5U3271	BUNKER
COK	9565	JEANNINE	E5U3579	Purse seiner
COK	11819	PROGRESS 10	E5U3586	BUNKER
COK	10606	HAI SOON 61	E5U3321	BUNKER

European Union – Spain (2 vessels) NLD (1 Vessel)

ESP	5274	AURORA B	EAQT	Purse seiner
ESP	5285	ROSITA C	EAHJ	Purse seiner
NLD	11218	COOL EXPRESO	PDKK	Fish carrier

Panama (3 vessels)

PAN	4054	SHIN HO CHUN NO. 101	3FRF9	FISH CARRIER
PAN	5023	SHIN HO CHUN NO. 102	3FEQ5	FISH CARRIER
PAN	9862	NEW SMILE	3FAU5	BUNKER

Chinese Taipei (57 vessels)

TWN	3489	SHENG JI CYUN NO.3	BJ4240	Tuna longliner
TWN	3545	CHAO YI NO.368	BG3814	Tuna longliner
TWN	3548	DAR LONG CHENG NO.2	BJ4659	Tuna longliner
TWN	3680	YU LONG NO.18	BJ4536	Tuna longliner
TWN	3692	YU FENG NO.13	BG3796	Tuna longliner
TWN	3697	LI CHENG NO.28	BJ4581	Tuna longliner
TWN	3704	MAAN YIH FENG NO.16	BJ4590	Tuna longliner
TWN	3780	MAAN YIH FENG NO.26	BJ4719	Tuna longliner
TWN	3798	YI RONG NO.16	BJ4751	Tuna longliner
TWN	3799	YU FENG NO.128	BJ4752	Tuna longliner
TWN	3810	YU FENG NO.33	BG3807	Tuna longliner
TWN	3837	SHEN LONG YU NO.31	BJ4805	Tuna longliner
TWN	3838	YU LONG NO.10	BJ4806	Tuna longliner
TWN	3846	CHUAN HSIANG NO.368	BJ4814	Tuna longliner
TWN	3849	SHIN JAAN SHIN	BG3817	Tuna longliner
TWN	3870	CHUAN HSIANG NO.866	BJ4842	Tuna longliner
TWN	3871	LI HUNG NO.666	BJ4843	Tuna longliner
TWN	3872	CHUAN SHYANG NO.98	BJ4844	Tuna longliner
TWN	3880	LUNG SOON NO.116	BI2575	Tuna longliner
TWN	3940	SHANG SHUN NO.112	BI2375	Tuna longliner
TWN	3994	CHIEN CHANG NO.326	BI2536	Tuna longliner
TWN	3997	SHANG SHUN NO.622	BI2541	Tuna longliner
TWN	4056	YI RONG NO.18	BJ4393	Tuna longliner
TWN	4462	SHUN WUN FA NO.168	BJ5008	Tuna longliner
TWN	4482	SHENQ BAO FA NO.168	BG3785	Tuna longliner
TWN	4526	YING RONG NO.638	BI2578	Tuna longliner
TWN	4607	MAN YING CAI NO.6	BJ5013	Tuna longliner
TWN	4738	SHUN WUN FA	BJ5006	Tuna longliner
TWN	5219	YOU FU	BJ4947	Tuna longliner
TWN	5337	YU LONG FA NO.22	BJ4878	Tuna longliner
TWN	5338	YU LONG NO.2	BJ4874	Tuna longliner

TWN	5358	SHENG I TSAI NO.368	BJ4889	Tuna longliner
TWN	5363	CHUAN FA SHIAN NO.88	BJ4910	Tuna longliner
TWN	5380	YU LONG FA NO.168	BG3792	Tuna longliner
TWN	5400	MAAN YIH FENG NO.266	BJ4925	Tuna longliner
TWN	5406	YU LONG FA NO.36	BJ4931	Tuna longliner
TWN	5408	MAAN YIH FENG NO.166	BG3830	Tuna longliner
TWN	5417	CHI TSAI NO.988	BG3789	Tuna longliner
TWN	8801	SHIN JAAN SHIN NO.66	BJ4960	Tuna longliner
TWN	8806	LIAN JI FA NO.212	BJ4974	Tuna longliner
TWN	8889	CHU HUAI NO.888	BJ4988	Tuna longliner
TWN	8896	CHAO FA NO.6	BJ4991	Tuna longliner
TWN	9525	CHANG YI NO.868	BG3677	Tuna longliner
TWN	9688	MAAN YIH FENG NO.366	BG3681	Tuna longliner
TWN	9703	MAAN YU FENG NO.3	BJ5009	Tuna longliner
TWN	9827	JIN HONG CHENG	BG3692	Tuna longliner
TWN	9888	YU FENG NO.513	BG3695	Tuna longliner
TWN	10048	FWU MAAN NO.88	BJ5064	Tuna longliner
TWN	10591	CHI HSIANG NO.889	BH3417	Tuna longliner
TWN	10679	CHI HONG NO.899	BH3418	Tuna longliner
TWN	10776	HUANG FU	BI2473	Tuna longliner
TWN	11560	LIAN SHENG NO.369	BH3457	Tuna longliner
TWN	11958	CHIEN YUAN MING	BG3778	Tuna longliner
TWN	12091	CHUAN FA SHIAN NO.288	BG3794	Tuna longliner
TWN	3771	YU LONG	BJ4704	Tuna longliner
TWN	3333	YU LONG NO.12	BJ3721	Tuna longliner
TWN	3721	SHIN JYI WANG NO.6	BG3824	Tuna longliner

United States of America (4 vessels)

USA	4347	SEA ENCOUNTER	WTF4069	Tuna purse seiner
USA	4610	FRIESLAND	WDE6789	Tuna purse seiner
USA	10317	CAPT VINCENT GANN	WDJ6149	Tuna purse seiner
USA	11446	EVELINA DA ROSA	WDI8477	Tuna purse seiner

Vanuatu (3 vessels)

VUT	4279	Longbow NO.1	YJSL6	Tuna longliner
VUT	11166	YI SHUN NO.101	YJTZ2	Tuna longliner
VUT	8715	Longbow NO.7	YJRT7	Tuna longliner