



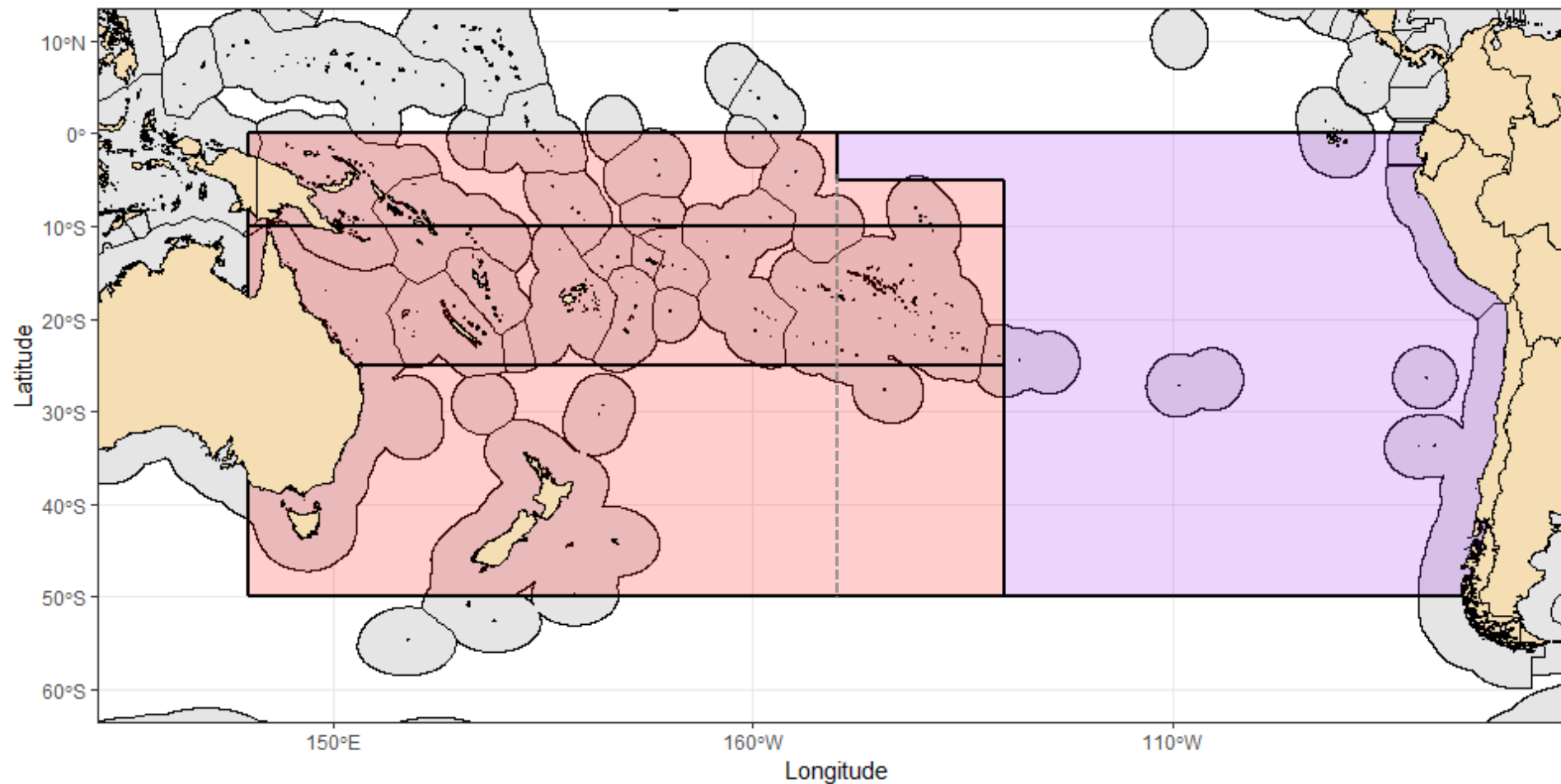
# Recent fishing patterns and relevance for setting TAC's and allocations

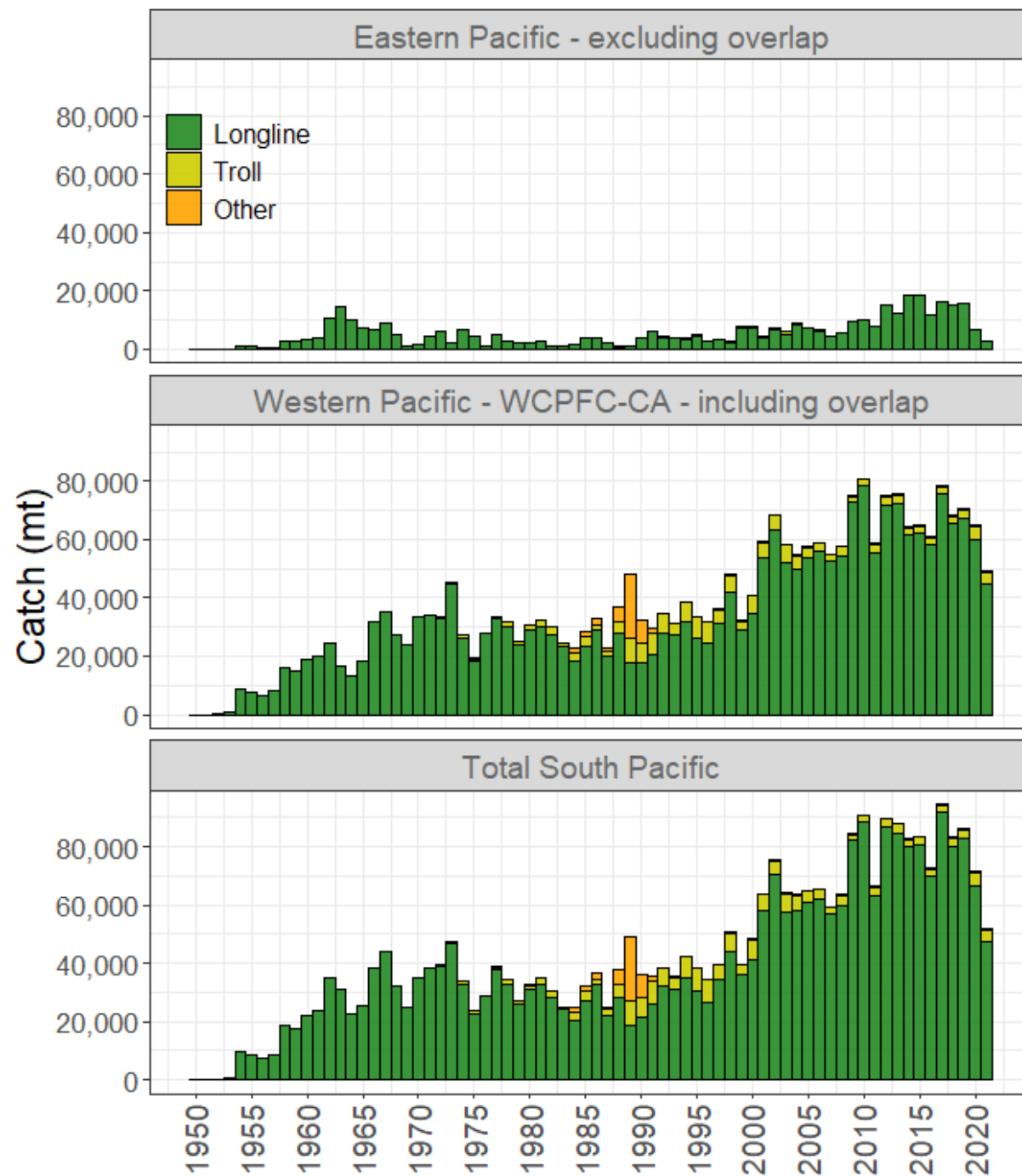
WCPFC SPA ROADMAP IWG, VIRTUAL, 15 JULY 2022

# BACKGROUND

- Consider the implications of the projection paper and HS paper on different TAC options
- Present recent SPA catches to put in context of projections
- Consider recent effort levels and distribution to consider likely catches if vulnerable biomass were to increase/decrease
- Present breakdown of recent catches by EEZ's and high seas to inform allocation discussions

# 2021 SP ALBACORE ASSESSMENT - MODEL

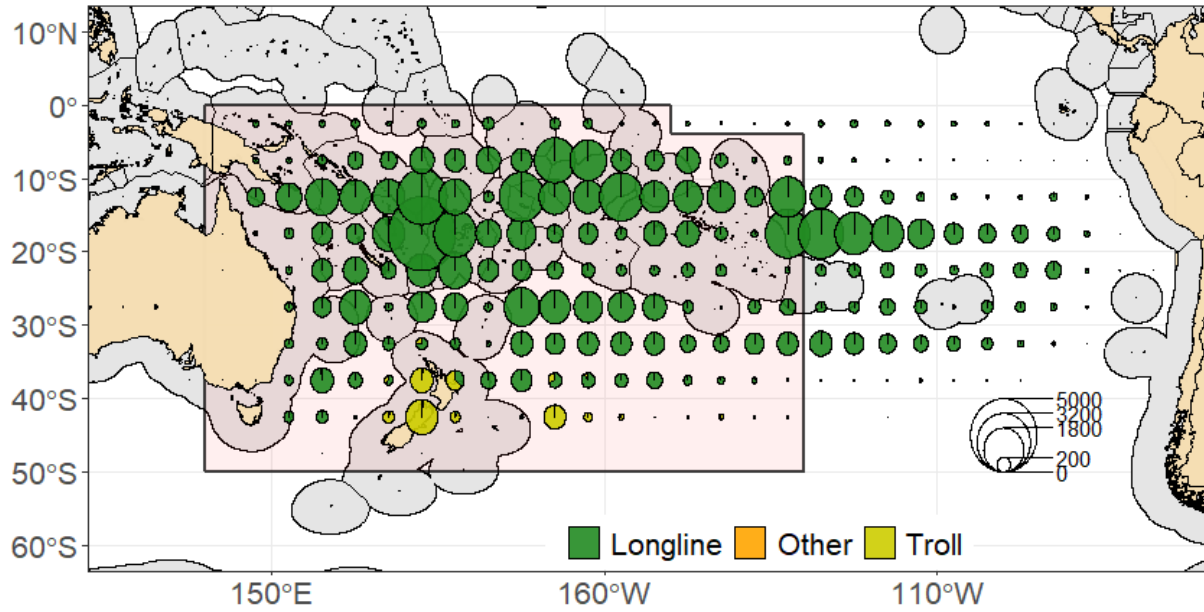




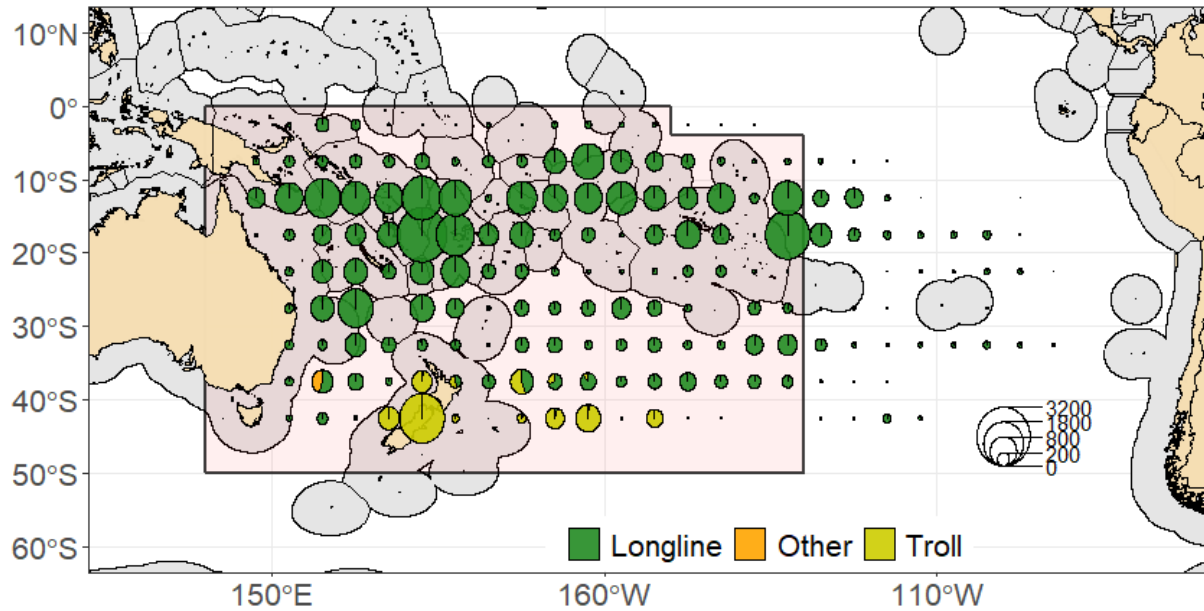


EEZ	2010	2011	2012	2013	2014	2015	2016	2017	2018	2019	2020	2021
American Samoa	2,838	1,784	2,416	1,769	1,377	1,760	1,511	1,511	1,552	1,062	545	715
Australia	745	652	702	757	728	945	910	830	751	796	1,158	1,072
Cook Islands	4,911	5,559	10,627	5,985	4,483	4,556	4,757	3,310	4,715	5,314	3,720	2,191
Fiji	5,771	4,165	4,287	3,642	3,916	5,643	4,784	5,871	5,466	5,140	3,913	4,258
High seas	40,349	22,910	29,765	29,707	19,984	23,045	16,818	35,803	27,407	31,376	28,357	21,841
Jarvis (USA)	0	0	0	0	0	0	0	0	0	0	0	0
Kiribati	1,290	550	1,218	819	1,258	2,578	4,752	426	72	1,165	2,699	340
Matthew and Hunter	15	6	9	0	0	2	1	2	1	2	2	32
New Caledonia	1,932	1,734	1,711	1,713	1,628	1,578	1,745	1,719	1,742	2,009	1,896	1,742
Niue	196	0	0	362	208	196	88	14	364	386	163	19
New Zealand	460	418	266	302	311	223	233	181	239	117	202	102
French Polynesia	3,482	3,224	3,591	3,495	3,744	3,418	3,276	2,148	3,058	3,439	2,812	2,689
PNG	795	294	801	237	310	459	1,185	1,613	1,451	757	755	529
Solomon Islands	6,021	6,424	8,172	9,074	13,111	6,887	3,748	5,553	7,022	4,498	2,507	2,452
Tokelau	0	108	250	0	7	1,867	2,447	1,662	632	1,970	1,220	461
Tonga	57	36	760	1,471	264	710	1,105	613	655	1,115	705	691
Tuvalu	675	467	930	1,491	475	406	1,501	1,426	944	1,448	554	245
Vanuatu	4,790	6,077	4,281	6,819	6,604	5,419	7,513	7,972	5,602	3,195	4,230	2,514
Wallis and Futuna	0	3	0	0	0	0	0	0	0	0	0	0
Samoa	2,529	1,415	2,038	1,642	800	840	823	1,638	1,364	1,442	849	414
Total	76,856	55,826	71,824	69,285	59,208	60,532	57,197	72,292	63,037	65,231	56,287	42,307
EEZ percent	48	59	59	57	66	62	71	50	57	52	50	48
HS percent	52	41	41	43	34	38	29	50	43	48	50	52

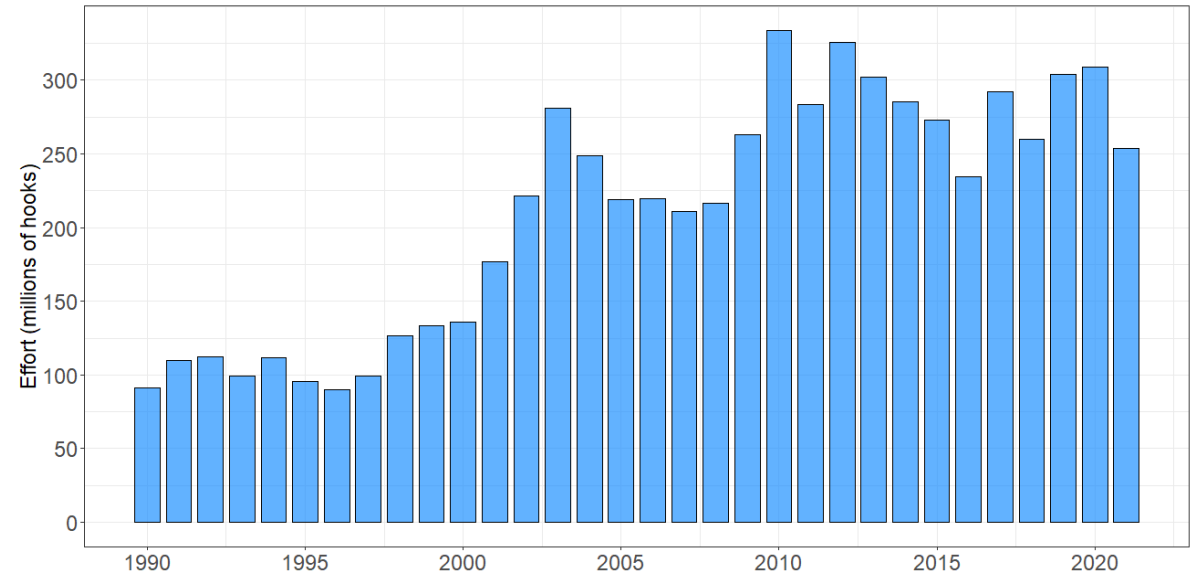
2016 - 2020

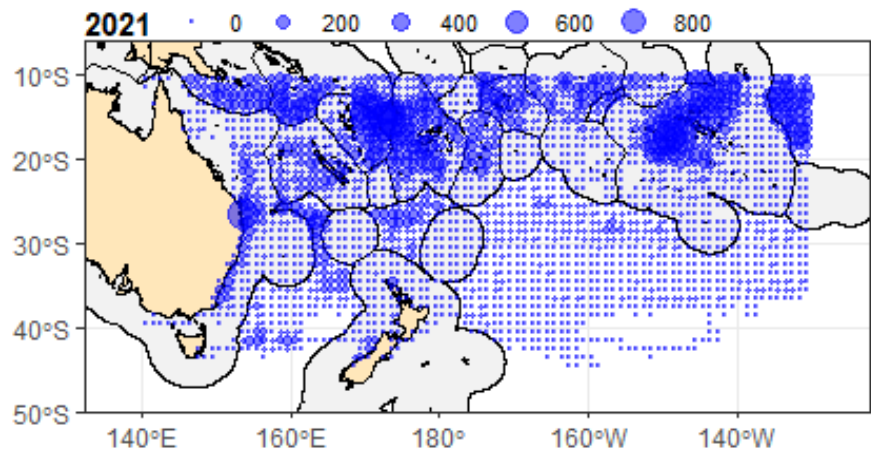
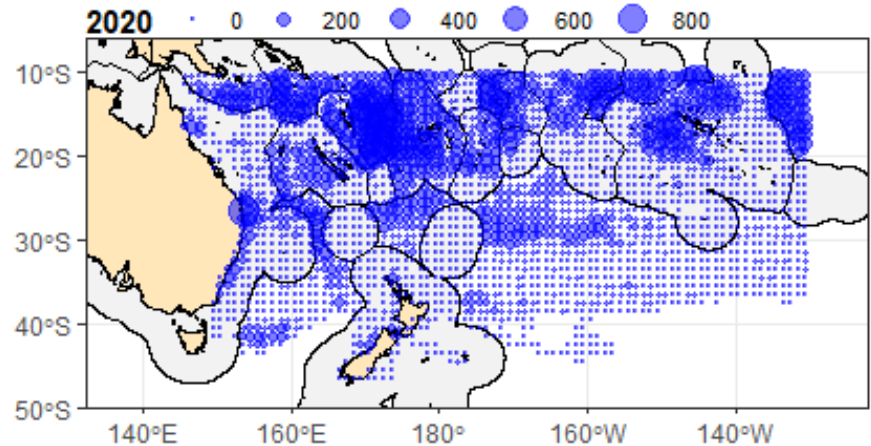
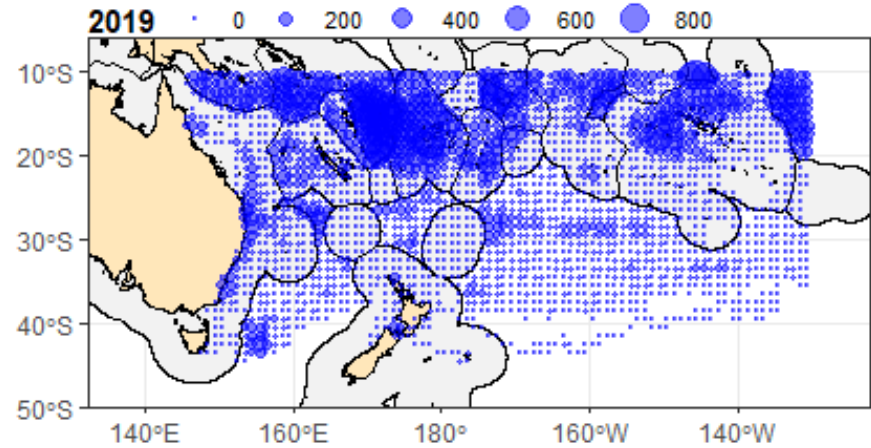


2021

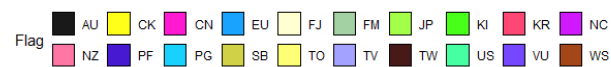
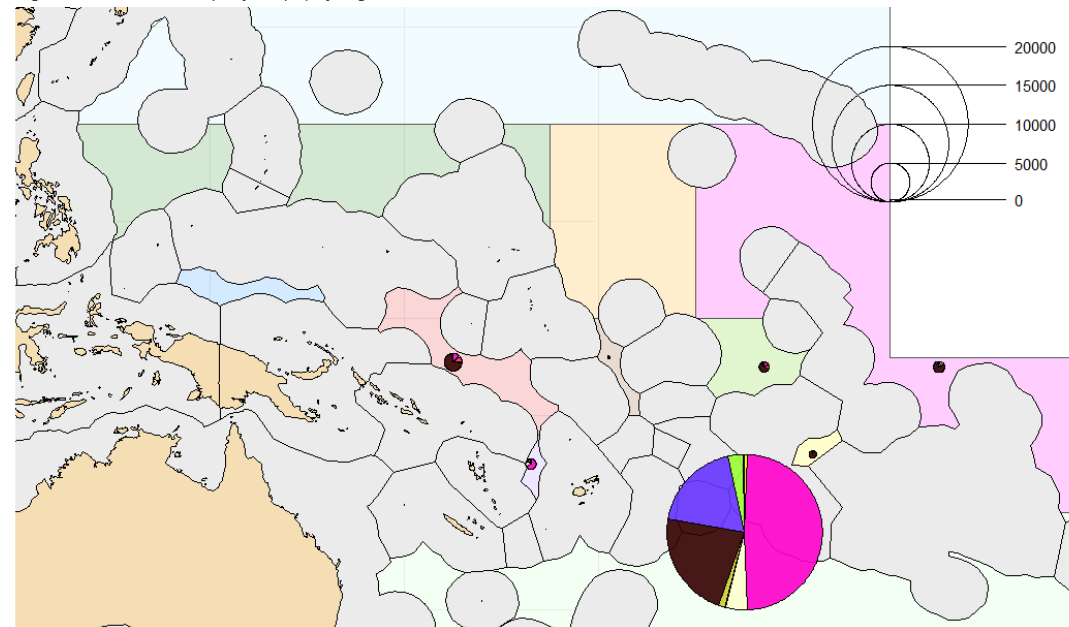


Total longline effort (hooks) for SLL - <10°S



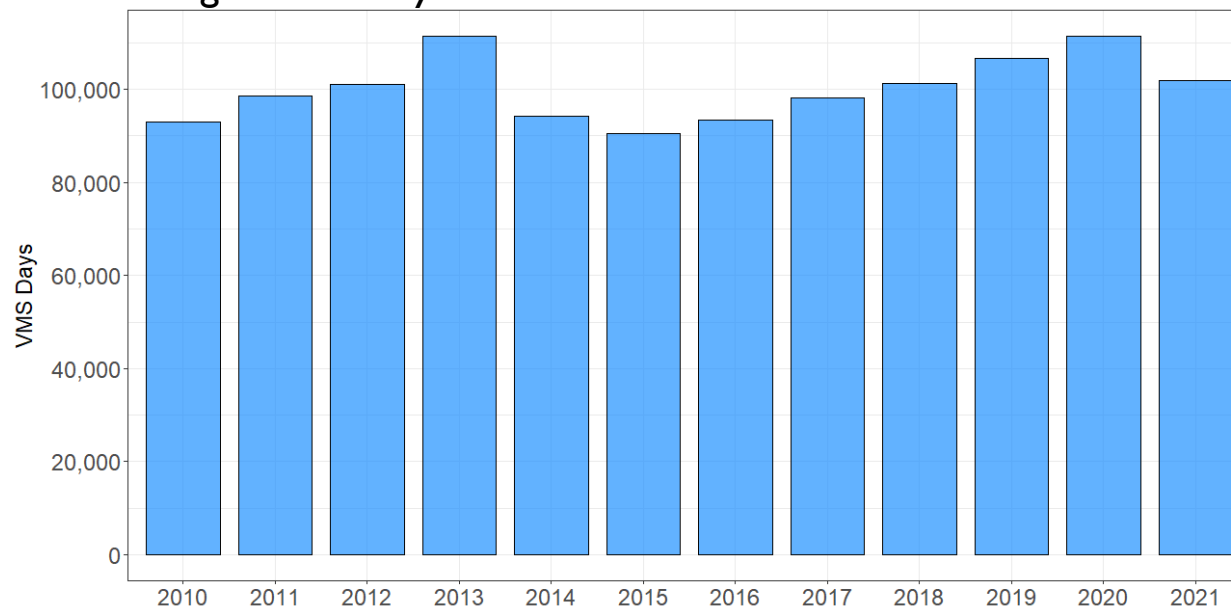


High seas albacore catch per year (mt) by flag - mean 2015-2020



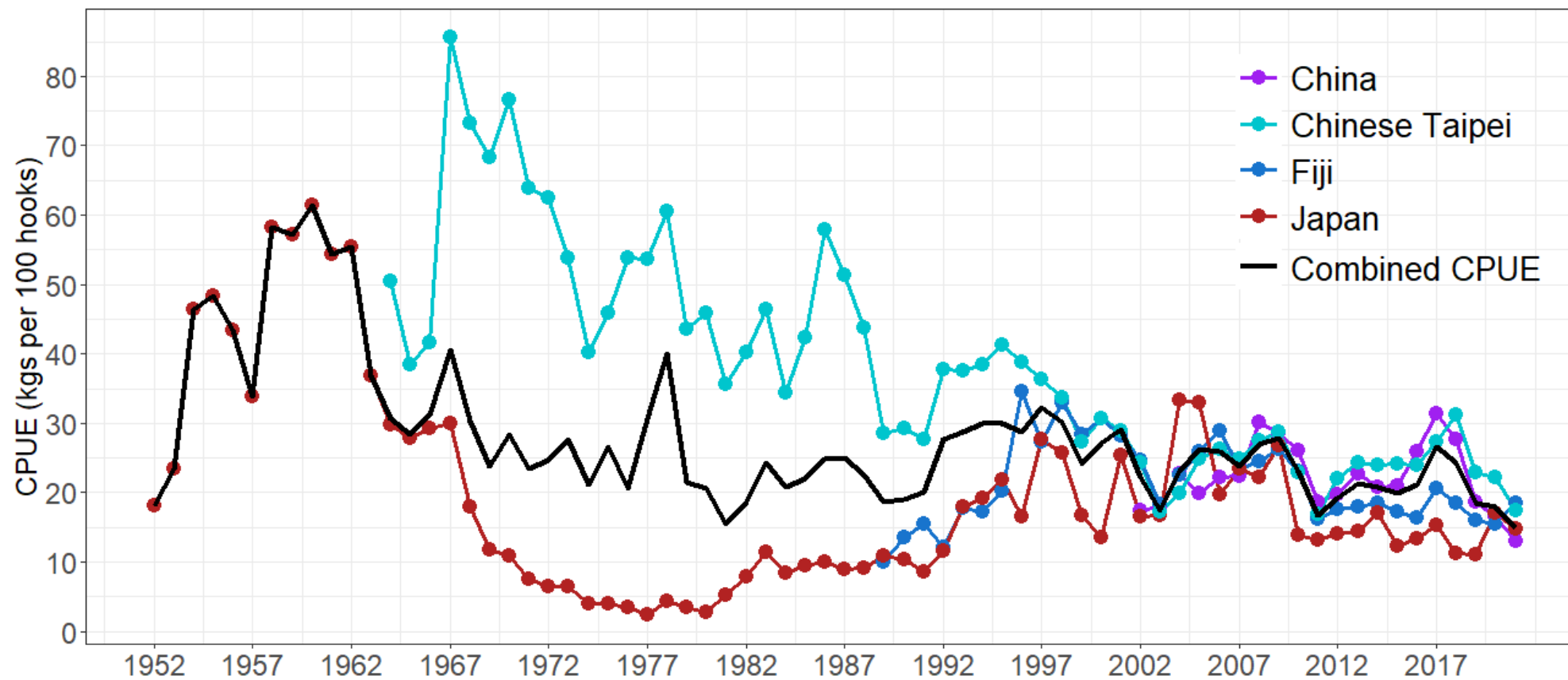
Pacific  
Community  
Communauté  
du Pacifique

Longline VMS days fished < 10°S





## CPUE trends for significant SPA fleets





## Just WCPO management

Catch scalar (cf 2017-2019 avg)	Approx catch (mt)		Depletion
	WCPFC_CA	Remainder EPO	Long-term avg SB/SB <sub>F=0</sub> (WCPFC-CA)
1	72,200	15,600	0.43
0.9	65,000	15,600	0.48
0.8	57,800	15,600	0.53
0.7	50,600	15,600	0.58
0.6	43,400	15,600	0.63
0.5	36,100	15,600	0.68

## Full south Pacific management

Catch scalar (cf 2017-2019 avg)	Approx catch (mt)		Depletion
	WCPFC_CA	Remainder EPO	Long-term avg SB/SB <sub>F=0</sub> (WCPFC-CA)
1	72,200	15,600	0.43
0.9	65,000	14,100	0.49
0.8	57,800	12,500	0.55
0.7	50,600	11,000	0.61
0.6	43,400	9,400	0.67
0.5	36,100	7,800	0.72

## 2018-20 Average Catch summaries



### Longline

FFA EEZ's	27,056		
French EEZ's	4,987		
US EEZ's	1,053		
High Seas	29,047		
<b>Total</b>	<b>62,142</b>	<b>Troll</b>	<b>3,415</b>
		<b>Grand Total</b>	<b>65,557</b>

### Longline

FFA EEZ's	27,056		
French EEZ's	4,987		
US EEZ's	1,053		
High Seas	29,047		
<b>Total</b>	<b>62,142</b>	<b>Troll</b>	<b>3,415</b>
		<b>EPO Longline</b>	<b>12,339</b>
		<b>Grand Total</b>	<b>77,896</b>

## 2021 Catch summaries



### Just WCPO management

Catch scalar (cf 2017-2019 avg)	Approx catch (mt)		Depletion
	WCPFC_CA	Remainder EPO	Long-term avg SB/SB <sub>F=0</sub> (WCPFC-CA)
1	72,200	15,600	0.43
0.9	65,000	15,600	0.48
0.8	57,800	15,600	0.53
0.7	50,600	15,600	0.58
0.6	43,400	15,600	0.63
0.5	36,100	15,600	0.68

### Full south Pacific management

Catch scalar (cf 2017-2019 avg)	Approx catch (mt)		Depletion
	WCPFC_CA	Remainder EPO	Long-term avg SB/SB <sub>F=0</sub> (WCPFC-CA)
1	72,200	15,600	0.43
0.9	65,000	14,100	0.49
0.8	57,800	12,500	0.55
0.7	50,600	11,000	0.61
0.6	43,400	9,400	0.67
0.5	36,100	7,800	0.72

### Longline

FFA EEZ's	15,487		
French EEZ's	4,463		
US EEZ's	715		
High Seas	21,841		
<b>Total</b>	<b>42,506</b>	<b>Troll</b>	<b>4,068</b>
		<b>Grand Total</b>	<b>46,574</b>

### Longline

FFA EEZ's	15,487		
French EEZ's	4,463		
US EEZ's	715		
High Seas	21,841		
<b>Total</b>	<b>42,506</b>	<b>Troll</b>	<b>4,068</b>
		<b>EPO Longline</b>	<b>2,679</b>
		<b>Grand Total</b>	<b>49,253</b>

# SUMMARY FOR SPA-IWG

- Simply an update of recent catches and effort
- Significant reduction in catches, but less so effort
- Difficult to predict catches with these effort levels and more normal conditions – covid/ENSO/fuel prices etc.
- Catch estimates for 2021 will evolve, particularly for EPO